



## Recreation Information

1. Westville Lake Recreation area is open during daylight hours only.
2. You may make shelter or ball field reservations, up to 6 months in advance of booking date, by calling 1-877-444-6777 (TDD: 1-877-833-6777) or by visiting [www.recreation.gov](http://www.recreation.gov).
3. Be mindful of changing water conditions when utilizing the Quinebaug River.
4. Westville offers a wide array of walking trails, including a scenic loop trail that is a part of the historic Grand Trunk Trail.
5. There are plenty of picnic tables and grills, along with a shaded picnic grove, available for free public use.
6. Fishing opportunities are widely available all along the Quinebaug River that runs through Westville.
7. Two boat launches for access to a day of fun on the water.
8. Enjoy the natural beauty and wildlife throughout the park.

## Emergency Phone Numbers

A public pay phone is available at Shelter 2

### EMERGENCY 911

#### FIRST AID

The park staff is trained to provide First Aid and CPR.

**NOTICE:** All persons entering upon government property do so at their own risk. The United States assumes no responsibility for their loss or injury from the acts or conduct of other person on the premises.

### Thank you for visiting!

The Westville Lake Recreation Area is operated by the US Army Corps of Engineers. Our trained staff is here to assist you, and we welcome your comments and suggestions.

This pamphlet provides you with general information and park rules that will ensure a pleasant and safe visit for all. Please check bulletin boards for more information.



#### Westville Lake Recreation Area

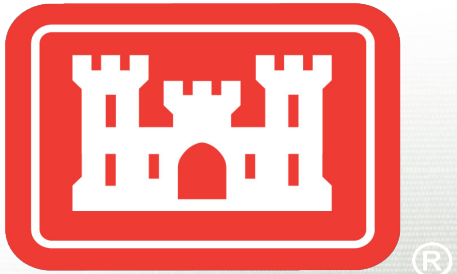
125 Wallace Road  
Sturbridge, MA 01566

#### Westville Dam

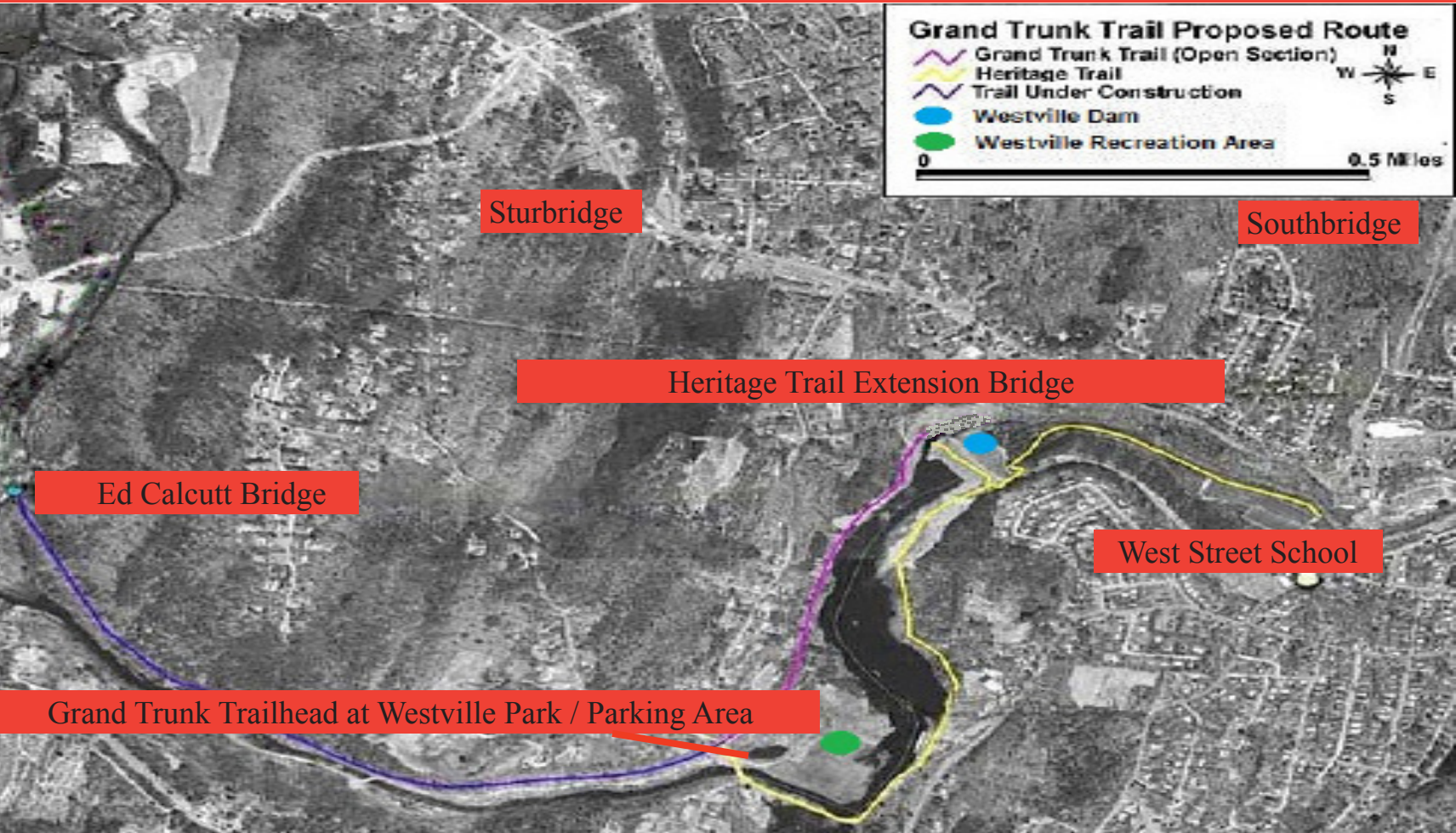
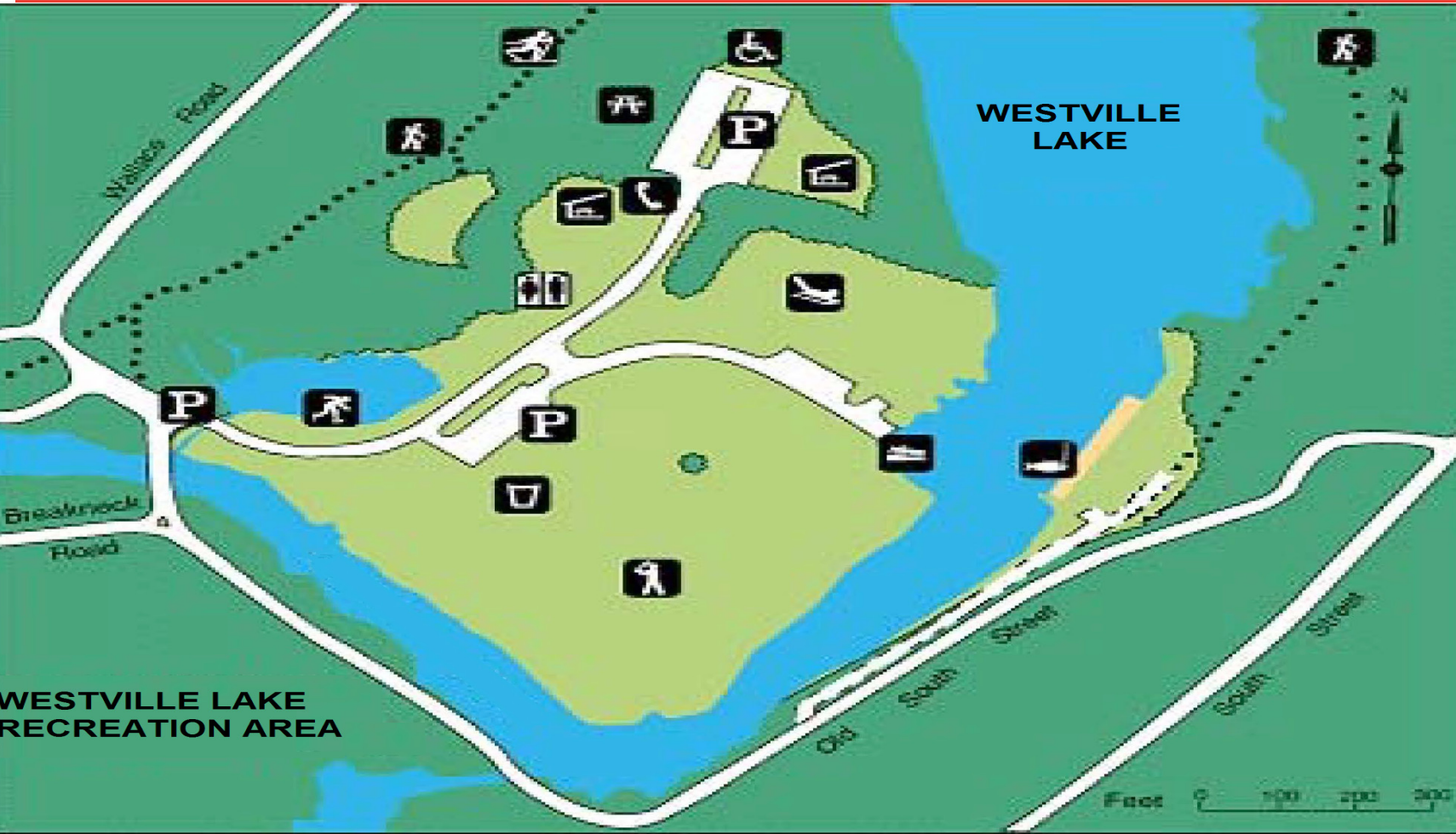
200 Marjorie Lane  
Southbridge, MA 01550

For more information, contact:

**U.S. Army Corps of Engineers**  
**East Brimfield Lake Office**  
24 Riverview Ave  
Fiskdale, MA 01518  
978-318-8848







Westville Lake

The U.S. Army Corps of Engineers owns and manages 578 acres of land at Westville Lake. The Quinebaug River, once harnessed for mills and factories at several locations within the park, now meanders uninhibited through forests and wetlands for several miles on its way to Westville Lake. The river and its tributaries serve as the center of activity for many species of animals.

Standing tall at 78 feet, Westville Dam has saved downstream towns millions of dollars in flood damage costs including: Southbridge and Dudley in Massachusetts and Putnam, Danielson, Jewett City, and Norwich in Connecticut. This facility is a part of a network of dams that relieve the effects of flooding along the major rivers of the Thames River Basin. The dam is designed to hold back 3.61 billion gallons of water while maintaining a safe level of downstream flow.

Recreation at Westville Lake

Westville Lake offers two large picnic shelters, which are reservable for a fee, for hosting any number of events. Westville Lake also features a canoe/kayak launch into the Quinebaug River, fishing opportunities, plenty of charcoal grills and picnic tables for everyone to enjoy, and a trail network perfect for hiking for all ages. In the winter, there is an ice skating pond in the park and perfect sledding hills!



Grand Trunk Trail

This 4-mile Westville section of the trail runs from West Street in Southbridge to Route 15 in Sturbridge following the rail bed of the Grand Trunk Railroad, which halted construction in the early 1920s.

Westville Lake Trail

This trail loops for 1.8 miles around the 23 acre Westville Lake Area. Two-thirds of the trail is on abandoned railroad bed and project service roads, the remainder is called the Heritage Trail and is a cross country terrain trail.

Informational kiosks are located at the trailhead parking lot on Wallace Road, and at the Westville Dam parking area. There are eight benches along the trail for you to rest and enjoy the scenery. The trails are open daily from sunrise to sunset, year-round.

Westville Recreation Area Rules

- 1. All dogs must be picked up after and on a 6 foot leash.
- 2. All trash is carry in-carry out.
- 3. Alcohol is permitted throughout the park, but keg beer is strictly prohibited. Please drink responsibly.
- 4. The park grills are the only place a fire can be had.
- 5. Drive with care, travel at the posted speed limit, and be mindful of other people.
- 6. Off-road vehicles are not allowed.

