



5.0 Shelter Analysis

5.1 Purpose

The Behavioral Analysis provides data on where evacuees intend to stay when they leave their homes to seek shelter elsewhere. One destination sought is public shelters. Therefore the purpose of the shelter analysis is to estimate the number of evacuees that will be seeking public shelter and determine the number of shelter spaces available. State and County emergency management offices then use this information to anticipate sheltering needs and to develop plans to ensure that evacuees seeking public shelter will have adequate and safe shelter space.

5.2 General

The shelter analysis, performed by the United States Army Corps of Engineers (USACE), considers shelter locations, vulnerability to storm surge, capacities for each location, demand for shelter spaces, and shelter inventories. Data developed in the hazards, vulnerability and behavioral analyses is also used to perform the shelter evaluation. It is important to note that the identification of a shelter in this report does not indicate that the facility will be open and available for every hurricane evacuation event. The choice of public shelters for a specific evacuation is a state and local emergency management decision. Local authorities will open shelters based on a variety of circumstances including storm intensity, storm direction, and availability of qualified shelter operators. Furthermore, shelter designation may change based on new construction, structure modifications, ownership changes or other factors impacting shelter selection. This chapter will discuss shelter vulnerability, shelter demand (number of evacuees seeking public shelter) and shelter inventories and capacities.

5.3 Shelter Vulnerability

Criteria contained in American Red Cross (ARC) publication 4496, Guidelines for Hurricane Evacuation Shelter Selection, are considered when evaluating shelters. The standards were developed from hurricane studies, hazard information, and research into the structural soundness of potential public shelters. The ARC, in coordination with local emergency management officials, only opens shelters as necessary. It is vitally important that any government or private entity intending to operate a public hurricane shelter carefully consider the ARC guidelines to ensure the public's safety. Hazards such as rainfall flooding and high winds are also evaluated for the safety of evacuees seeking shelter. Additionally, hurricane evacuation shelters should be located in areas above any potential storm surge elevations.

Nonetheless, in preparing this shelter analysis, the USACE, as well as the other parties involved with this specific study, did not conduct any ARC 4496 type inspection of shelter facilities. Therefore any public shelter listed in the inventories below, or included in the shelter capacity figures does not necessarily reflect that the facility is in compliance with those guidelines.



5.0 Shelter Analysis

5.4 Shelter Demand

Public shelter demand is the number of evacuees expected to seek public shelter. Based on the behavioral data received and discussed in Chapter 4 of this report, shelter demand was assigned to various populations based on the evacuation scenarios (A and B) during low and high tourist occupancy periods. This demand has been estimated for each hurricane evacuation scenario for each community. Evacuation scenarios are discussed in Chapter 3. The percent of permanent resident evacuees planning to use public shelters was varied from five to ten percent depending on the evacuation zone; generally five percent was assigned to the surge vulnerable zones and ten percent to the inland areas, which encompass mostly mobile home evacuees. Again based on behavioral results, those percentages and their distributions did not vary from response scenario to response scenario or community to community.

For tourist populations, again there was consistency from community to community and from response scenario to response scenario, but the percentages going to public shelter did vary based on evacuation zones. In similar fashion as for permanent residents, the coastal zones had slightly lower shelter use percentages than the inland ones. Also, the population associated with seasonal and vacation units was slightly higher than those for hotels and motels. Given that the former types of tourist units were usually leased for a longer period (i.e., a week or more) the assumption was that those occupants would be slightly less likely to totally abandon their units in favor of evacuating back to their home once an evacuation of their area was ordered.

Tables 5-1 through 5-4 show the shelter demand for each evacuation scenario by community, aggregated alphabetically by county. These tables also show the total shelter capacities for each community as provided by the American Red Cross (ARC) National Shelter System (NSS), regardless of scenario. These figures reflect the capacities for those facilities outside the surge evacuation zones (A and B) with a planning shelter space allocation of 20 square feet per person.

Please note that these shelter demand figures do not take into account special needs and elderly populations which could increase the demand, albeit only slightly; these individuals may have wheelchairs, walkers, or other special requirements that in many cases will need to be accommodated for in specialized facilities separate from general population shelters.



5.0 Shelter Analysis

Table 5-1: Public Sheltering Demand and Sheltering Capacity – Fairfield County

Community	Scenario A Low Occ	Scenario A High Occ	Scenario B Low Occ	Scenario B High Occ	Shelter Capacities*
Bridgeport	2,329	2,338	3,781	3,791	5,872
Darien	319	322	511	516	1,119
Fairfield	1,084	1,101	1,623	1,642	1,238
Greenwich	319	322	511	516	2,112
Norwalk	1,328	1,349	2,136	2,164	834
Stamford	1,671	1,719	3,006	3,065	1,560
Stratford	1,000	1,014	1,437	1,455	3,635
Westport	475	488	725	741	4,112
Totals	8,525	8,653	13,730	13,890	20,482

* Based on ARC National Shelter Survey (NSS) database.

Table 5-2: Public Sheltering Demand and Sheltering Capacity – Middlesex County

Community	Scenario A Low Occ	Scenario A High Occ	Scenario B Low Occ	Scenario B High Occ	Shelter Capacities*
Chester	38	38	83	84	600
Clinton	1,100	1,133	1,647	1,691	2,800
Deep River	36	37	101	104	100
Essex	62	65	155	160	600
Old Saybrook	403	449	441	488	0
Westbrook	244	276	288	320	300
Totals	1,883	1,998	2,715	2,847	4,400

* Based on ARC National Shelter Survey (NSS) database.



5.0 Shelter Analysis

Table 5-3: Public Sheltering Demand and Sheltering Capacity – New Haven County

Community	Scenario A Low Occ	Scenario A High Occ	Scenario B Low Occ	Scenario B High Occ	Shelter Capacities*
Branford	806	832	992	1,023	70
East Haven	750	761	968	978	175
Guilford	395	413	574	594	35
Hamden	613	618	1,202	1,209	5,145
Madison	344	385	487	530	105
Milford	1,224	1,255	1,652	1,689	4,962
New Haven	1,892	1,914	3,254	3,282	400
North Haven	266	271	511	517	50
West Haven	1,026	1,032	1,567	1,576	105
Totals	7,316	7,481	11,207	11,398	11,047

* Based on ARC National Shelter Survey (NSS) database.

Table 5-4: Public Sheltering Demand and Sheltering Capacity – New London County

Community	Scenario A Low Occ	Scenario A High Occ	Scenario B Low Occ	Scenario B High Occ	Shelter Capacities*
East Lyme	420	465	567	616	5,800
Groton	733	770	1,108	1,152	3,903
Ledyard	130	133	358	362	0
Lyme	32	35	64	69	0
Montville	185	190	493	502	2,000
New London	439	449	677	689	2,340
Old Lyme	202	262	258	320	800
Preston	55	56	95	97	540
Stonington	580	628	703	754	3,419
Waterford	486	496	622	633	1,555
Totals	3,262	3,484	4,945	5,194	20,357

* Based on ARC National Shelter Survey (NSS) database.



5.0 Shelter Analysis

5.5 Shelter Capacities and Inventories

Tables 5-5 and 5-6 provide an inventory of potential hurricane evacuation shelters and capacities throughout the study area that might be used during an evacuation. The table shows the shelter name, community, the Hurricane Evacuation Zone in which each facility is located (A, B or Inland), along with any other information that was provided in the source tables. The source of the data in Table 5-5 is the ARC National Shelter Survey (NSS) database. Data for Table 5-6 was provided by Connecticut Department of Emergency Services and Public Protection, Division of Emergency Management and Homeland Security (CT DESPP DEMHS).

Tables 5-7 through 5-10 are an assessment of sheltering capabilities by community and by county. The tables provide an overview of shelter capacities from the NSS relative to the shelter demand figures derived from the behavioral survey data. Basically, the figures reflect the difference between the predicted shelter demand and the shelter capacity. The numbers in black reflect those communities where shelter capacity exceeds local shelter demand. The red figures in parentheses indicate those communities with shelter shortfalls (i.e., shelter demand > shelter capacity).

Figures 5-1 through 5-5 display the location of all identified shelters and the location of the evacuating population seeking public shelter resulting from a Scenario B hurricane with high tourist occupancy.



5.0 Shelter Analysis

Table 5-5: Shelter Inventory – American Red Cross

County	Community	Zone	Shelter Name ¹	Address	ARC Shelter #	Usable Sq Ft	Evacuation Capacity	Post Impact Capacity
Fairfield County	Bethel	Inland	Bethel Middle School ¹	600 Whittlesey Dr	41658	-	400	0
	Bethel	Inland	Bethel Municipal Center ¹	1 School St	41659	8,000	400	200
	Bethel	Inland	Frank A Berry School	David W Deakin Educ Pk	41670	-	500	0
	Bethel	Inland	Frank A. Berry ¹	200 Whittlesey Dr	60549	-	0	250
	Bethel	Inland	South Street Fire Station ¹	36 South St	41697	-	100	0
	Bethel	Inland	Stony Hill Fire House ¹	Rt 6 Stony Hill Rd	41699	-	100	0
	Bridgeport	A	Barnum/Waltersville School Campus ¹	495 Waterview St	69800	9,760	664	244
	Bridgeport	A	Black Rock School ¹	545 Brewster St	67143	5,520	108	138
	Bridgeport	A	Columbus/South End School ¹	160 Iranistan Ave	69803	11,600	119	290
	Bridgeport	A	Longfellow School ¹	139 Ocean Terrace	66715	6,080	187	152
	Bridgeport	B	Bassick High School ¹	1181 Fairfield Ave	57181	16,160	673	404
	Bridgeport	B	Bryant Elementary School ¹	230 Poplar St	67021	4,280	137	107
	Bridgeport	B	Cesar A. Batalla School ¹	606 Howard Ave	67171	6,560	416	164
	Bridgeport	B	Curiale Elementary ¹	300 Laurel Ave	57183	10,120	584	253
	Bridgeport	B	Dunbar School ¹	445 Union Ave	66843	9,280	756	232
	Bridgeport	B	J.Tinsdale School	275 Hollister Ave	149770	-	660	335
	Bridgeport	B	Roosevelt School ¹	680 Park Ave	67141	5,920	251	148
	Bridgeport	B	Tisdale School ¹	250 Hollister Ave	69798	13,400	660	335
	Bridgeport	Inland	Beardsley School ¹	500 Huntington Rd	67019	4,840	280	121
	Bridgeport	Inland	Blackham School	425 Thorne St	67020	8,000	638	200

1. Shelter facility is common to both the American Red Cross (NSS) inventory and the shelter list provided by the Connecticut Department of Emergency Services and Public Protection, Division of Emergency Management and Homeland Security (CT DESPP DEMHS).



5.0 Shelter Analysis

Table 5-5: Shelter Inventory – American Red Cross (continued)

County	Community	Zone	Shelter Name ¹	Address	ARC Shelter #	Usable Sq Ft	Evacuation Capacity	Post Impact Capacity
Fairfield County	Bridgeport	Inland	Bridgeport Police Community Center	1395 Sylvan Ave	67173	-	20	0
	Bridgeport	Inland	Central High School	1 Lincoln Blvd	57182	7,600	500	10
	Bridgeport	Inland	Classical Studies Academy ¹	240 Linwood Ave	67136	3,200	224	80
	Bridgeport	Inland	Cross School	1775 Reservoir Ave	66840	6,400	312	160
	Bridgeport	Inland	Edison School ¹	115 Boston Terrace	67022	2,240	95	56
	Bridgeport	Inland	Eisenhower Center	263 Golden Hill St	66844	-	100	0
	Bridgeport	Inland	Fairchild Wheeler Interdistrict Magnet School	840 Old Town Rd	154226	-	612	306
	Bridgeport	Inland	Geraldine Johnson School ¹	475 Lexington Ave	69799	8,800	138	220
	Bridgeport	Inland	Hall School ¹	290 Clermont Ave	67024	4,760	36	119
	Bridgeport	Inland	Hallen School ¹	68 Omega Ave	67129	5,360	77	134
	Bridgeport	Inland	Harding High School ¹	1734 Central Ave	67131	18,720	502	468
	Bridgeport	Inland	High Horizon/Multicultural Magnet School Campus ¹	JFK Campus	66716	7,750	328	194
	Bridgeport	Inland	John Winthrop School	85 Eckart St	67170	6,520	341	163
	Bridgeport	Inland	Luis Munoz Marin School ¹	479 Helen St	67134	7,520	328	188
	Bridgeport	Inland	Madison School ¹	376 Wayne St	67135	4,600	178	115
	Bridgeport	Inland	North Branch Library	3455 Madison Ave	67174	-	50	0
	Bridgeport	Inland	North End Bethany Senior Center	20 Thorne St	67172	-	75	0
	Bridgeport	Inland	Park City Magnet School ¹	1526 Chopsey Hill Rd	67140	6,560	128	164

1. Shelter facility is common to both the American Red Cross (NSS) inventory and the shelter list provided by the Connecticut Department of Emergency Services and Public Protection, Division of Emergency Management and Homeland Security (CT DESPP DEMHS).



5.0 Shelter Analysis

Table 5-5: Shelter Inventory – American Red Cross (continued)

County	Community	Zone ¹	Shelter Name ¹	Address	ARC Shelter #	Usable Sq Ft	Evacuation Capacity	Post Impact Capacity
Fairfield County	Bridgeport	Inland	Read School ¹	130 Ezra St	66839	6,840	242	171
	Bridgeport	Inland	Sheridan School ¹	280 Tesiny Ave	67142	2,880	93	72
	Bridgeport	Inland	Skane School ¹	2977 Madison Ave	67167		71	45
	Bridgeport	Inland	Thomas Hooker School	138 Roger Williams Rd	67132	8,440	504	211
	Brookfield	Inland	Brookfield High School ¹	45 Longfellow Hill Rd	41663	-	100	0
	Brookfield	Inland	Center Elementary School ¹	8 Obtuse Hill Rd	41665	-	0	45
	Brookfield	Inland	Huckleberry Hill Elementary School ¹	100 Candlewood Lake Rd	41675	-	100	0
	Brookfield	Inland	Whisconier ¹	17 W Whisconier Rd	41586	-	0	163
	Cos Cob	Inland	Cos Cob Elementary School	300 East Putnam Ave	30179	15,720	0	393
	Danbury	Inland	Danbury AFRC	90 Wooster Heights Rd	155950	5,000	250	125
	Danbury	Inland	Danbury High School	42 Clapboard Ridge Rd	41666	-	0	600
	Danbury	Inland	Danbury War Memorial	1 Memorial Dr	41702	14,000	700	350
	Danbury	Inland	Danbury2	24 Hospital Ave	149772	-	60	30
	Danbury	Inland	Hatters Community Park Hall	7 E Hayestown Rd	41672	-	0	50
	Danbury	Inland	Jepsen Trailer Park Recreation Center ¹	1 Kenosia Ave	141272	-	50	0
	Danbury	Inland	King St Intermediate School	151 S King St	41679	-	0	100
	Danbury	Inland	King St Primary School	151 S King St	41680	-	0	100
	Danbury	Inland	Park Ave School	82 Park Ave	41686	-	0	100

1. Shelter facility is common to both the American Red Cross (NSS) inventory and the shelter list provided by the Connecticut Department of Emergency Services and Public Protection, Division of Emergency Management and Homeland Security (CT DESPP DEMHS).



5.0 Shelter Analysis

Table 5-5: Shelter Inventory – American Red Cross (continued)

County	Community	Zone ¹	Shelter Name ¹	Address	ARC Shelter #	Usable Sq Ft	Evacuation Capacity	Post Impact Capacity
Fairfield County	Danbury	Inland	Western Connecticut State University	181 White St	142013	-	0	35
	Darien	Inland	Darien High School ¹	80 High School Lane	65545	25,080	830	627
	Darien	Inland	Middlesex Middle School ¹	204 Hollow Tree Ridge Rd	65544	15,985	289	627
	Darien	Inland	Tokeneke Elementary School ¹	7 Old Farm Rd	66823	5,480	0	137
	Easton	Inland	Helen Keller Middle School ¹	360 Sport Hill Rd	57163	12,040	725	301
	Easton	Inland	Samuel Staples School ¹	515 Morehouse Rd	68943	9,000	438	225
	Fairfield	Inland	Black Rock Congregational Church ¹	3685 Black Rock Tpke	66916	5,400	0	135
	Fairfield	Inland	Dwight Elementary School ¹	1600 Redding Rd	69348	5,680	0	142
	Fairfield	Inland	Fairfield Ludlowe High School ¹	765 Unquowa Rd	57173	13,520	626	338
	Fairfield	Inland	Fairfield Warde High School ¹	755 Melville Ave	57175	24,600	572	615
	Fairfield	Inland	Fairfield Woods Middle School ¹	1115 Fairfield Woods Rd	69350	12,760	0	319
	Fairfield	Inland	First Presbyterian Church ¹	2475 Easton Tpke	57177	5,120	0	128
	Fairfield	Inland	Holy Family School ¹	140 Edison Ave	69351	-	10	0
	Fairfield	Inland	Jennings School ¹	31 Palm Dr	69349	3,040	0	76
	Fairfield	Inland	Notre Dame Catholic High School ¹	220 Jefferson St	69353	-	10	0
	Fairfield	Inland	Our Lady of Assumption School	605 Stratfield Rd	69352	-	10	0
	Fairfield	Inland	St. Pius X School ¹	834 Brookside Dr	69354	-	10	0

1. Shelter facility is common to both the American Red Cross (NSS) inventory and the shelter list provided by the Connecticut Department of Emergency Services and Public Protection, Division of Emergency Management and Homeland Security (CT DESPP DEMHS).



5.0 Shelter Analysis

Table 5-5: Shelter Inventory – American Red Cross (continued)

County	Community	Zone ¹	Shelter Name ¹	Address	ARC Shelter #	Usable Sq Ft	Evacuation Capacity	Post Impact Capacity
Fairfield County	Greenwich	B	Eastern Civic Center	90 Harding Road	156116	7,220	361	180
	Greenwich	Inland	Central Middle School ¹	9 Indian Rock Lane	11067	20,000	1,000	500
	Greenwich	Inland	Greenwich High School	10 Hillside Rd	11071	-	0	2,712
	Greenwich	Inland	Western Civic Center	449 Pemberwick Rd	78241	8,200	500	225
	Greenwich	Inland	Western Middle School ¹	1 Western Highway	11090	1,184	59	29
	Monroe	Inland	Beacon Hill Evangelical Free Church	371 Old Zoar Road	66904	-	200	0
	Monroe	Inland	Jockey Hollow School ¹	365 Fan Hill Rd	68778	8,680	276	217
	Monroe	Inland	Masuk High School ¹	1014 Monroe Tpke	57169	20,120	468	503
	Monroe	Inland	Monroe Senior Center	235 Cutlers Farm Rd	72045	3,920	0	98
	New Canaan	Inland	Lapham Senior Center ¹	677 South Ave In Waveny Park	19022	2,360	19	50
	New Canaan	Inland	New Canaan High School ¹	11 Farm Rd	18023	-	400	0
	New Canaan	Inland	New Canaan Town Hall	77 Main St	32356	6,000	300	25
	New Canaan	Inland	Saxe Middle School ¹	468 South Ave	19021	-	2,000	0
	New Canaan	Inland	South School ¹	8 Farm Rd	2004	-	425	0
	New Canaan	Inland	St. Aloysius Parish	40 Maple St	78245	3,500	0	80
	New Canaan	Inland	Waveny House	677 South Ave	1627	5,040	77	88
	New Canaan	Inland	YMCA ¹	564 South Ave	149910	1,000	50	25
	New Fairfield	Inland	New Fairfield High School ¹	54 Gillotti Rd	41682	3,740	187	0
	New Fairfield	Inland	New Fairfield United Methodist Church ¹	1 Beaver Bogg Rd	41683	-	130	0

1. Shelter facility is common to both the American Red Cross (NSS) inventory and the shelter list provided by the Connecticut Department of Emergency Services and Public Protection, Division of Emergency Management and Homeland Security (CT DESPP DEMHS).



5.0 Shelter Analysis

Table 5-5: Shelter Inventory – American Red Cross (continued)

County	Community	Zone	Shelter Name ¹	Address	ARC Shelter #	Usable Sq Ft	Evacuation Capacity	Post Impact Capacity
Fairfield County	New Fairfield	Inland	Squantz Fire House	Ball Pond Rd	41698	-	35	0
	New Fairfield	Inland	Volunteer Fire Co A	55 Sleetwood Dr	41701	-	200	0
	Newtown	Inland	Newtown High School ¹	12 Berkshire Rd	41684	-	1,000	0
	Newtown	Inland	Newtown Middle School ¹	11 Queen St	41685	-	400	0
	Newtown	Inland	Reed Intermediate School ¹	3 Trades Ln	41588	-	500	0
	Norwalk	Inland	Brien McMahon High School ¹	300 Highlands Ave	28927	13,840	429	346
	Norwalk	Inland	Norwalk City Hall	125 East Ave	77253	-	0	25
	Norwalk	Inland	Norwalk High School ¹	22 Calvin Murphy Dr	28907	12,920	405	323
	Redding Center	Inland	Joel Barlow High School ¹	100 Black Rock Tpke	41676	-	400	0
	Redding Center	Inland	John Reed Middle School ¹	486 Redding Rd	40988	-	250	0
	Redding Center	Inland	Redding Elementary School ¹	33 Lonetown Rd	41687	-	500	0
	Ridgefield	Inland	Branchville Elementary School	40 Florida Rd	41660	-	400	0
	Ridgefield	Inland	East Ridge Middle School ¹	10 East Ridge Rd	41667	-	600	0
	Ridgefield	Inland	Ridgefield H S	700 N Salem Rd	41689	-	1,000	0
	Ridgefield	Inland	Ridgefield Recreation Center ¹	195 Danbury Rd	137834	4,800	240	120
	Ridgefield	Inland	Ridgefield Senior Center ¹	100 Danbury Rd	141254	-	50	0
	Ridgefield	Inland	Scotts Ridge Middle School ¹	750 N Salem Rd	41694	-	400	0
	Ridgefield	Inland	Yanity Gym ¹	60 Prospect	41706	-	70	0
	Riverside	Inland	Eastern Middle School ¹	51 Hendrie Ave	11064	11,064	553	276
	Shelton	Inland	EMS Building	100 Meadows St	138739	-	35	0

1. Shelter facility is common to both the American Red Cross (NSS) inventory and the shelter list provided by the Connecticut Department of Emergency Services and Public Protection, Division of Emergency Management and Homeland Security (CT DESPP DEMHS).



5.0 Shelter Analysis

Table 5-5: Shelter Inventory – American Red Cross (continued)

County	Community	Zone	Shelter Name ¹	Address	ARC Shelter #	Usable Sq Ft	Evacuation Capacity	Post Impact Capacity
Fairfield County	Shelton	Inland	Shelton Community Center	41 Church St	149920	6,000	300	150
	Shelton	Inland	Shelton High School ¹	120 Meadow St	70698	-	1,200	360
	Sherman	Inland	Sherman Volunteer	Rte 39 North	41583	-	100	0
	Sherman	Inland	The Sherman School ¹	2 Rt 37 E Sherman Center	41700	-	400	0
	Stamford	B	Cloonan Middle School ¹	11 W North St	11138	12,440	272	311
	Stamford	Inland	Rippowam Middle School ¹	381 High Ridge Rd	11137	10,840	0	271
	Stamford	Inland	Scofield Magnet School	641 Scofieldtown Rd	36375	12,920	0	323
	Stamford	Inland	Stamford High School ¹	55 Strawberry Hill Ave	30229	15,550	766	437
	Stamford	Inland	Union Baptist Church	805 Newfield Ave	66838	-	250	100
	Stamford	Inland	Westhill High School	125 Roxbury Rd	71989	21,280	544	532
	Stratford	A	Birdseye Municipal Center	486 Birdseye St	67398	8,320	493	208
	Stratford	B	Baldwin Center ¹	1000 West Broad St	67397	12,520	298	314
	Stratford	Inland	Bunnell High School ¹	1 Bulldog Lane	57167	22,680	735	567
	Stratford	Inland	Flood Junior High School ¹	490 Chapel St	66914	15,320	1,265	383
	Stratford	Inland	Second Lane School ¹	65 Second Hill Lane	67396	7,080	661	177
	Stratford	Inland	Stratford High School ¹	45 North Parade	57164	18,800	560	470
	Stratford	Inland	Stratford Ng Armory	63 Armory Rd	72192	9,900	0	297
	Stratford	Inland	Wooster Middle School	150 Lincoln St	57165	10,640	414	266
	Trumbull	Inland	Calvary Evengelical Church	498 White Plains Rd	57172	5,000	0	185
	Trumbull	Inland	Madison Middle School	4630 Madison Ave	141230	4,000	100	100

1. Shelter facility is common to both the American Red Cross (NSS) inventory and the shelter list provided by the Connecticut Department of Emergency Services and Public Protection, Division of Emergency Management and Homeland Security (CT DESPP DEMHS).



5.0 Shelter Analysis

Table 5-5: Shelter Inventory – American Red Cross (continued)

County	Community	Zone	Shelter Name ¹	Address	ARC Shelter #	Usable Sq Ft	Evacuation Capacity	Post Impact Capacity
Fairfield County	Trumbull	Inland	Trumbull High School ¹	72 Strobel Rd	57162	12,280	1,122	307
	Trumbull	Inland	Trumbull Senior Center	23 Priscilla Place	136176	2,840	40	52
	Weston	Inland	Weston High School	115 School Rd	149909	12,000	600	300
	Weston	Inland	Weston Middle School	135 School Rd	28909	11,800	590	295
	Westport	A	Westport Senior Center	21 Imperial Ave	57180	4,800	0	120
	Westport	Inland	Coleytown Elementary	65 Easton Rd	69198	4,640	289	116
	Westport	Inland	Coleytown Middle School	255 North Ave	69199	7,960	567	199
	Westport	Inland	Long Lots School	13 Hyde Ln	28910	7,840	502	187
	Westport	Inland	Staples High School	70 North Ave	28911	55,080	2,754	1,377
	Wilton	Inland	Comstock Community Center	180 School Rd	154938	1,250	63	31
	Wilton	Inland	Wilton High School ¹	395 Danbury Rd	1210	30,240	1,512	756
	Wilton	Inland	Wilton Miller School	217 Wolfpit Rd	28912	11,998	591	300
	Wilton	Inland	Wilton YMCA ¹	404 Danbury Rd	68779	12,040	487	301
Middlesex County	Centerbrook	Inland	Essex Elementary School ¹	108 Main St	4278	-	600	0
	Chester	Inland	St Josephs Parish Center ¹	48 Middlesex Ave	4223	-	100	0
	Chester	Inland	Whelen Engineering ¹	51 Winthrop Rd Rt 145	17924	-	500	0
	Clinton	A	Clinton Town Hall ¹	54 East Main St.	141294	-	50	50
	Clinton	Inland	Jared Eliot School ¹	69 Fairy Dell Road	136045	-	600	300
	Clinton	Inland	Joel School ¹	137-B Glenwood Rd	136046	-	1,800	900
	Clinton	Inland	Morgan High School ¹	27 Killingworth Tpke	136052	-	400	200
	Cromwell	Inland	Coles Rd Firehouse ¹	105 Coles Rd	4277	925	46	23

1. Shelter facility is common to both the American Red Cross (NSS) inventory and the shelter list provided by the Connecticut Department of Emergency Services and Public Protection, Division of Emergency Management and Homeland Security (CT DESPP DEMHS).



5.0 Shelter Analysis

Table 5-5: Shelter Inventory – American Red Cross (continued)

County	Community	Zone	Shelter Name ¹	Address	ARC Shelter #	Usable Sq Ft	Evacuation Capacity	Post Impact Capacity
Middlesex County	Cromwell	Inland	Cromwell High School ¹	34 Evergreen Rd	139495	17,600	880	440
	Cromwell	Inland	Cromwell Town Hall ¹	41 West St. Cromwell	138345	11,200	560	280
	Cromwell	Inland	Cromwell Woodside Inter. School	30 Woodside Rd	139514	15,000	750	375
	Cromwell	Inland	Warren Community Center	7 Sacket Hill Rd	149847	-	100	50
	Deep River	Inland	Deep River Elementary ¹	12 River St	4227	-	100	0
	Deep River	Inland	John Winthrop Middle School ¹	1 Winthrop Rd	57326	-	0	500
	Durham	Inland	Coginchaug Regional High School ¹	135 Pickett Lane	141922	-	50	50
	East Hampton	Inland	East Hampton High School ¹	15 N Maple St	141218	-	120	0
	Higganum	Inland	Haddam-Killingworth High School ¹	95 Little City Rd	142010	-	50	50
	Killingworth	Inland	Haddam-Killingworth Middle School ¹	451 Route 81	19019	-	720	240
	Killingworth	Inland	Killingworth Elementary School ¹	340 Route 81	76554	58,013	150	300
	Killingworth	Inland	St Lawrence Church	Corner Of Rte 81	9423	-	75	0
	Middlefield	Inland	Memorial Middle School ¹	124 Hubbard St	9180	-	300	0
	Middletown	Inland	Armed Forces Reserve Center	375 Smith St	155980	13,000	650	325
	Middletown	Inland	Middletown High School ¹	200 Larosa Lane	78463	-	578	289
	Middletown	Inland	St Francis Of Assisi Church ¹	10 Elm St	17643	-	50	0
	Middletown	Inland	Woodrow Wilson Junior High School ¹	311 Hunting Hill Ave	78502	-	241	193

1. Shelter facility is common to both the American Red Cross (NSS) inventory and the shelter list provided by the Connecticut Department of Emergency Services and Public Protection, Division of Emergency Management and Homeland Security (CT DESPP DEMHS).



5.0 Shelter Analysis

Table 5-5: Shelter Inventory – American Red Cross (continued)

County	Community	Zone	Shelter Name ¹	Address	ARC Shelter #	Usable Sq Ft	Evacuation Capacity	Post Impact Capacity
Middlesex County	Moodus	Inland	East Haddam Senior Citizen Center	15 Great Hillwood Rd	149914	860	43	21
	Moodus	Inland	Nathan Hale Ray High School ¹	15 School Dr	9617	-	100	50
	Old Saybrook	A	Old Saybrook High School ¹	1111 Boston Post Rd	9435	-	500	0
	Portland	Inland	Portland High School ¹	95 High St	4257	-	160	0
	Westbrook	A	Westbrook Armory ¹	37 Brookside Ave	155952	1,800	90	45
	Westbrook	B	Daisy Ingraham Elementary School ¹	105 Goodspeed Dr	75482	-	1,000	500
	Westbrook	Inland	Westbrook High School ¹	156 Mcveagh Rd	75488	-	300	200
New Haven County	Ansonia	Inland	Ansonia High School	20 Pulaski Hwy	70691	10,200	510	255
	Beacon Falls	Inland	Beacon Falls Fire Dept	119 N Main St	48832	-	35	0
	Beacon Falls	Inland	Woodlawn High School	135 Backrimmon Rd	141307	-	50	0
	Bethany	Inland	Amity Regional Junior High School ¹	190 Luke Hill Rd	10599	-	35	0
	Bethany	Inland	Bethany Community School ¹	44 Peck Rd	10583	-	270	0
	Branford	A	Branford Armory	87 Montowese St	24248	2,800	140	0
	Branford	A	Branford High School ¹	185 East Main St	10586	-	35	0
	Branford	A	Community House/Branford Recreation Center ¹	46 Church St	10650	-	35	0
	Branford	A	John B. Sliney School ¹	23 Eades St	10606	-	35	0
	Branford	B	Community Dining Room ¹	30 Harrison Ave	10613	-	35	0
	Moodus	Inland	East Haddam Senior Citizen Center	15 Great Hillwood Rd	149914	860	43	21

1. Shelter facility is common to both the American Red Cross (NSS) inventory and the shelter list provided by the Connecticut Department of Emergency Services and Public Protection, Division of Emergency Management and Homeland Security (CT DESPP DEMHS).



5.0 Shelter Analysis

Table 5-5: Shelter Inventory – American Red Cross (continued)

County	Community	Zone	Shelter Name ¹	Address	ARC Shelter #	Usable Sq Ft	Evacuation Capacity	Post Impact Capacity
New Haven County	Moodus	Inland	Nathan Hale Ray High School ¹	15 School Dr	9617	-	100	50
	Old Saybrook	A	Old Saybrook High School ¹	1111 Boston Post Rd	9435	-	500	0
	Portland	Inland	Portland High School ¹	95 High St	4257	-	160	0
	Westbrook	A	Westbrook Armory ¹	37 Brookside Ave	155952	1,800	90	45
	Westbrook	B	Daisy Ingraham Elementary School ¹	105 Goodspeed Dr	75482	-	1,000	500
	Westbrook	Inland	Westbrook High School	156 Mcveagh Rd	75488	-	300	200
	Ansonia	Inland	Ansonia High School	20 Pulaski Hwy	70691	10,200	510	255
	Beacon Falls	Inland	Beacon Falls Fire Dept	119 N Main St	48832	-	35	0
	Beacon Falls	Inland	Woodlawn High School	135 Backrimmon Rd	141307	-	50	0
	Bethany	Inland	Amity Regional Junior High School	190 Luke Hill Rd	10599	-	35	0
	Bethany	Inland	Bethany Community School ¹	44 Peck Rd	10583	-	270	0
	Branford	A	Branford Armory	87 Montowese St	24248	2,800	140	0
	Branford	A	Branford High School ¹	185 East Main St	10586	-	35	0
	Branford	A	Community House/Branford Recreation Center ¹	46 Church St	10650	-	35	0
	Branford	A	John B. Sliney School ¹	23 Eades St	10606	-	35	0
	Branford	B	Community Dining Room ¹	30 Harrison Ave	10613	-	35	0
	Branford	Inland	Mary T Murphy School ¹	14 Brushy Plain Rd	21406	-	35	0
	Branford	Inland	Walsh Intermediate School ¹	185 Damascus Rd	10641	-	35	0
	Cheshire	Inland	Cheshire High School ¹	525 South Main St	43380	1,400	70	35

1. Shelter facility is common to both the American Red Cross (NSS) inventory and the shelter list provided by the Connecticut Department of Emergency Services and Public Protection, Division of Emergency Management and Homeland Security (CT DESPP DEMHS).



5.0 Shelter Analysis

Table 5-5: Shelter Inventory – American Red Cross (continued)

County	Community	Zone	Shelter Name ¹	Address	ARC Shelter #	Usable Sq Ft	Evacuation Capacity	Post Impact Capacity
New Haven County	Cheshire	Inland	Cheshire Senior Center	240 Maple Ave	7762	-	35	0
	Cheshire	Inland	Highland School ¹	490 Highland Ave (Rt 10)	10629	-	35	0
	Derby	Inland	Bradley School ¹	155 David Humphrey Rd	77251	-	100	100
	Derby	Inland	Derby High School ¹	8 Nutmeg Ave	77252	-	150	150
	Derby	Inland	Derby Middle School	10 Nutmeg Ave	141266	-	50	0
	East Haven	A	East Haven Fire House/ Bradford Manor #4 ¹	85 George St	4535	-	35	0
	East Haven	A	East Haven Middle School ¹	67 Hudson St	10584	-	35	0
	East Haven	A	East Haven Middle School ¹	67 Hudson St	43366	-	35	0
	East Haven	A	St. Claires Church (Hall) ¹	234 Coe Ave	4530	-	35	0
	East Haven	B	East Haven Senior Center ¹	91 Taylor Ave	10647	-	35	0
	East Haven	Inland	Deer Run Elementary School ¹	311 Foxon Rd	7526	-	35	0
	East Haven	Inland	East Haven Fire House, Company #3 (Foxon) ¹	1470 North High St (Rt 80/100)	10653	-	35	0
	East Haven	Inland	East Haven High School ¹	35 Wheelbarrow Ln	10590	-	35	0
	East Haven	Inland	Hayes Elementary School ¹	1 Maple Elementary	4534	-	35	0
	East Haven	Inland	Nathan Hale School	480 Townsend Ave	10594	-	35	0
	Guilford	B	Guilford Community Center ¹	32 Church St	76009	-	35	0
	Guilford	Inland	Guilford High School ¹	605 New England Rd	76010	-	35	0
	Hamden	Inland	Alice Peck School ¹	35 Hillfield Rd	10589	-	35	0

1. Shelter facility is common to both the American Red Cross (NSS) inventory and the shelter list provided by the Connecticut Department of Emergency Services and Public Protection, Division of Emergency Management and Homeland Security (CT DESPP DEMHS).



5.0 Shelter Analysis

Table 5-5: Shelter Inventory – American Red Cross (continued)

County	Community	Zone	Shelter Name ¹	Address	ARC Shelter #	Usable Sq Ft	Evacuation Capacity	Post Impact Capacity
New Haven County	Hamden	Inland	Dunbar Hill School ¹	315 Lane St	10609	-	35	0
	Hamden	Inland	Hamden High School ¹	2040 Dixwell Ave	10625	-	4,800	0
	Hamden	Inland	Hamden Middle School ¹	2623 Dixwell Ave	137956	-	35	0
	Hamden	Inland	Hamden Police/Fire/Ems Training Facility ¹	1255 Shepard Ave	4532	-	100	0
	Hamden	Inland	Helen Street School ¹	285 Helen St	10612	-	35	0
	Hamden	Inland	M L Keefe Senior Center ¹	11 Pine St	29034	-	35	0
	Hamden	Inland	Miller Senior Center ¹	2901 Dixwell Ave	21492	-	35	0
	Hamden	Inland	Spring Glen Grammar School ¹	1908 Whitney Ave	4531	-	35	0
	Madison	A	Island Avenue Elementary School	20 Island Ave	10587	-	35	0
	Madison	A	Town Campus Gymnasium ¹	4 Campus Dr	7320	-	35	0
	Madison	B	Madison Congregational Church	26 Meeting House Ln	4536	-	35	0
	Madison	Inland	Brown School	980 Durham Rd	10627	-	35	0
	Madison	Inland	Daniel Hand High School ¹	302 Green Hill Rd	43390	-	35	0
	Madison	Inland	North Madison Congregational Church ¹	1271 Durham Rd	4545	-	35	0
	Meriden	Inland	Francis T. Maloney High School	121 Gravel St	10600	-	35	0
	Meriden	Inland	Lincoln Middle School ¹	164 Centennial Ave	10603	-	35	0
	Meriden	Inland	Max E Muranunick Senior Citizen Center ¹	22-26 West Main St	29015	-	350	0

1. Shelter facility is common to both the American Red Cross (NSS) inventory and the shelter list provided by the Connecticut Department of Emergency Services and Public Protection, Division of Emergency Management and Homeland Security (CT DESPP DEMHS).



5.0 Shelter Analysis

Table 5-5: Shelter Inventory – American Red Cross (continued)

County	Community	Zone	Shelter Name ¹	Address	ARC Shelter #	Usable Sq Ft	Evacuation Capacity	Post Impact Capacity
New Haven County	Meriden	Inland	Meriden Thomas Edison Middle School	1355 N. Broad St	141921	-	50	50
	Meriden	Inland	Orville Platt High School	220 Coe Ave	10601	-	35	0
	Meriden	Inland	Washington Middle School ¹	1225 North Broad St	10649	-	35	0
	Milford	Inland	Foran High School ¹	80 Foran Rd	11959	-	2,465	0
	Milford	Inland	Jonathan Law High School ¹	20 Lansdale Ave	11135	-	2,247	0
	Milford	Inland	Senior Citizens Service Center ¹	9 Jepson Dr	11136	-	250	100
	New Haven	A	Ross - Woodward Elementary	125 Barnes Ave	7759	-	35	0
	New Haven	B	Fair Haven Middle School	164 Grand Ave	43375	-	35	0
	New Haven	B	Truman School	114 Truman St	1275	-	35	0
	New Haven	B	Wilbur Cross High School ¹	181 Mitchell Dr	11404	-	35	0
	New Haven	Inland	Ben Jepson School	15 Lexington Ave	141263	-	50	0
	New Haven	Inland	Hill Regional Career High School ¹	140 Legion Ave	2795	-	35	0
	New Haven	Inland	Hopkins School	986 Forest Rd	10595	-	35	0
	New Haven	Inland	Jackie Robinson Middle School	150 Fournier St	7746	-	35	0
	New Haven	Inland	James Hillhouse High School/Field House ¹	480 Sherman Ave	10588	-	35	0
	New Haven	Inland	James Moore Field House/Southern CT State University	125 Wintergreen Ave	4541	-	35	0

1. Shelter facility is common to both the American Red Cross (NSS) inventory and the shelter list provided by the Connecticut Department of Emergency Services and Public Protection, Division of Emergency Management and Homeland Security (CT DESPP DEMHS).



5.0 Shelter Analysis

Table 5-5: Shelter Inventory – American Red Cross (continued)

County	Community	Zone	Shelter Name ¹	Address	ARC Shelter #	Usable Sq Ft	Evacuation Capacity	Post Impact Capacity
New Haven County	New Haven	Inland	New Haven Regional Fire Training Academy	230 Ella Grasso Blvd	10654	-	35	0
	New Haven	Inland	Resurrection Lutheran Church	158 Davenport Ave	7760	-	35	0
	New Haven	Inland	Roberto Clemente Middle School	360 Columbus Ave	10631	-	35	0
	New Haven	Inland	Sheriden Middle School	191 Fountain St	10610	-	35	0
	New Haven	Inland	Southern CT State University - Pelz Gym ¹	505 Fitch St	4540	-	35	0
	North Branford	Inland	Jerome Harrison Elementary School ¹	335 Foxon Rd (Rt 80)	10591	-	35	0
	North Branford	Inland	North Branford High School ¹	49 Caputo Rd	10623	-	35	0
	North Branford	Inland	North Branford Intermediate School ¹	645 Foxon Rd (Rt80)	10630	23,260	1,163	581
	North Haven	Inland	North Haven Hs ¹	221 Elm St	141259	-	50	0
	Northford	Inland	Stanley T. Williams Elementary School ¹	1332 Middletown Ave (Rt 17)	10618	-	35	0
	Northford	Inland	Totoket Valley Elementary School ¹	1388 Middletown Ave (Rt 17)	10619	-	35	0
	Orange	Inland	High Plains Community Center ¹	525 Orange Center Rd (Rt 152)	10604	-	35	0
	Orange	Inland	Laurel Gardens ¹	245 Indian River Rd	10645	-	35	0
	Orange	Inland	Turkey Hill Elementary School ¹	441 Turkey Hill Rd	10628	-	35	0

1. Shelter facility is common to both the American Red Cross (NSS) inventory and the shelter list provided by the Connecticut Department of Emergency Services and Public Protection, Division of Emergency Management and Homeland Security (CT DESPP DEMHS).



5.0 Shelter Analysis

Table 5-5: Shelter Inventory – American Red Cross (continued)

County	Community	Zone	Shelter Name ¹	Address	ARC Shelter #	Usable Sq Ft	Evacuation Capacity	Post Impact Capacity
New Haven County	Oxford	Inland	Great Oak Middle School	1 Great Oak Rd	142003	-	50	50
	Oxford	Inland	Oxford Center Fire Station	484 Oxford Rd	70695	-	0	25
	Oxford	Inland	Oxford High School ¹	61 Quaker Farms Rd	70693	1,000	0	25
	Oxford	Inland	Oxford Oak Farms Station	403 Quaker Farms Rd	70696	-	0	25
	Oxford	Inland	Oxford Quaker Farms School ¹	30 Great Oak Rd	70694	-	0	25
	Oxford	Inland	Oxford Riverside Fire Station	151 Coppermine Rd	70697	-	0	25
	Prospect	Inland	Prospect Volunteer Fire Department ¹	26 New Haven Rd Rt 69	9425	4,000	0	100
	Seymour	Inland	Seymour High School ¹	2 Botsford Rd	75970	-	600	200
	Southbury	Inland	Heritage Village Activities Center	11 Heritage Way	9440	3,500	175	0
	Southbury	Inland	Pomperaug High School	234 Judd Rd	141262	-	50	0
	Southbury	Inland	Rochambeau Middle School	100 Peter Rd	9437	2,200	110	0
	Southbury	Inland	Southbury Senior Center ¹	561 Main St	141917	-	50	50
	Wallingford	Inland	Dag Hammarskjold Middle School ¹	106 Pond Hill Rd	10605	-	35	0
	Wallingford	Inland	James Moran Middle School ¹	141 Hope Hill Rd	10607	-	35	0
	Wallingford	Inland	Lyman Hall High School ¹	70 Pond Hill Rd	10596	-	35	0
	Wallingford	Inland	Mark T. Sheehan High School	142 Hope Hill Rd	10602	-	35	9
	Waterbury	Inland	Arts Magnet School	16 South Elm St	149773	-	200	100
	Waterbury	Inland	Crosby High	300 Peirpont Rd	57540	8,000	400	0
	Waterbury	Inland	Kennedy High School	422 Highland Ave	9444	5,200	260	0

1. Shelter facility is common to both the American Red Cross (NSS) inventory and the shelter list provided by the Connecticut Department of Emergency Services and Public Protection, Division of Emergency Management and Homeland Security (CT DESPP DEMHS).



5.0 Shelter Analysis

Table 5-5: Shelter Inventory – American Red Cross (continued)

County	Community	Zone	Shelter Name ¹	Address	ARC Shelter #	Usable Sq Ft	Evacuation Capacity	Post Impact Capacity
New Haven County	Waterbury	Inland	N.G. Armory, Waterbury, CT	64 Field St	72193	15,480	774	387
	Waterbury	Inland	Northend Recreation Center	268 North Main St	138647	-	35	35
	Waterbury	Inland	Waterbury Magnet School	255 Main St	141288	-	50	0
	West Haven	A	Allington Fire House	20 Admiral St	10646	-	35	0
	West Haven	B	West Haven Town Hall ¹	355 Main St	4537	-	35	0
	West Haven	Inland	Carrington Middle School	2 Tetlow St	10592	-	35	0
	West Haven	Inland	University Of New Haven - Charger Gymnasium	300 Orange Ave (Main Campus)	4544	-	35	0
	West Haven	Inland	West Haven Fire House Station # 3	215 Spring St	10652	-	35	0
	Wolcott	Inland	Tyrell School ¹	500 Todd Rd	4271	5,000	250	0
	Woodbridge	Inland	Amity High School ¹	25 Newton Rd	2791	-	35	0
	Woodbridge	Inland	Woodbridge Senior Center ¹	4 Meeting House Ln	4698	-	35	0
New London County	Baltic	Inland	Sayles Elementary School	25 Scotland Rd	55135	-	441	129
	Baltic	Inland	Sprague Town Hall	1 Main St	13895	-	60	0
	Colchester	Inland	Bacon Academy School ¹	611 Norwich Ave	55134	-	1,200	450
	Colchester	Inland	Jack Jackter Elementary School	215 Halls Hill Rd	5094	-	700	400
	East Lyme	Inland	East Lyme Community Center ¹	37-45 Society Rd	13370	-	800	355
	East Lyme	Inland	East Lyme High School ¹	30 Chesterfield Rd	12945	-	2,800	1,100
	East Lyme	Inland	East Lyme Middle School ¹	37 Society Rd	12875	-	1,200	700
	East Lyme	Inland	Flanders Elementary School ¹	167 Boston Post Rd	12883	-	400	200

1. Shelter facility is common to both the American Red Cross (NSS) inventory and the shelter list provided by the Connecticut Department of Emergency Services and Public Protection, Division of Emergency Management and Homeland Security (CT DESPP DEMHS).



5.0 Shelter Analysis

Table 5-5: Shelter Inventory – American Red Cross (continued)

County	Community	Zone	Shelter Name ¹	Address	ARC Shelter #	Usable Sq Ft	Evacuation Capacity	Post Impact Capacity
New London County	East Lyme	Inland	Lillie B Haynes Elementary School ¹	25 Society Rd	12882	-	600	240
	Groton	B	Groton Senior Center	102 Newton Rd	49327	-	300	150
	Groton	Inland	Fitch High School ¹	101 Groton Long Point Rd	13038	-	2,200	1,500
	Groton	Inland	Groton Municipal Building ¹	295 Meridian St	5098	-	450	250
	Groton	Inland	Groton Sr. Center (Noank School)	42 Smith Ln	72945	-	653	220
	Groton	Inland	West Side Middle School ¹	250 Brandegee Rd	5033	-	600	400
	Jewett City	Inland	Griswold Fire Dept ¹	883 Voluntown Rd	13049	-	300	50
	Jewett City	Inland	Lisbon Central School ¹	15 Newent Rd	12778	-	1,000	500
	Lebanon	Inland	Lyman High School ¹	917 Exeter Rd	12775	-	850	256
	Mystic	A	Mystic Middle School ¹	204 Mistuxet Ave	12941	-	500	200
	New London	Inland	Bennie Dover Middle School	36 Waller St	13395	-	1,500	480
	New London	Inland	New London Ng Armory ¹	249 Bayonet St	72191	-	340	170
	New London	Inland	New London Senior Center	120 Broad St	5036	-	400	150
	New London	Inland	Winthrop School	74 Grove St	149771	-	100	50
	Niantic	A	Camp Niantic F.K.A. Camp Rell	38 Smith St	66568	-	932	932
	Niantic	A	Niantic Center School	7 West Main St	12884	-	400	300
	North Franklin	Inland	Franklin Congregational Church	31 Meeting House Hill Rd	13048	-	100	0

1. Shelter facility is common to both the American Red Cross (NSS) inventory and the shelter list provided by the Connecticut Department of Emergency Services and Public Protection, Division of Emergency Management and Homeland Security (CT DESPP DEMHS).



5.0 Shelter Analysis

Table 5-5: Shelter Inventory – American Red Cross (continued)

County	Community	Zone	Shelter Name ¹	Address	ARC Shelter #	Usable Sq Ft	Evacuation Capacity	Post Impact Capacity
New London County	North Franklin	Inland	Franklin Elementary School ¹	206 Pond Rd	30944	-	700	200
	North Franklin	Inland	Franklin Town Hall	7 Meeting House Hill Rd	5280	-	200	160
	North Stonington	Inland	North Stonington Elementary School	311 Norwich Westerly Rd Rt 2	12834	-	400	200
	Norwich	Inland	Bishop Elementary School	526 East Main St	5052	-	750	350
	Norwich	Inland	Buckingham Elementary School	182 Cedar St	5057	-	1,200	390
	Norwich	Inland	Greenville Elementary School ¹	165 Golden St Ext	5049	-	500	260
	Norwich	Inland	Huntington Elementary School ¹	80 W Town St	5050	-	700	260
	Norwich	Inland	John Moriarty Elementary School ¹	20 Lawler Ln	5051	-	1200	700
	Norwich	Inland	John Stanton Elementary School ¹	386 New London Tpke	5055	-	500	260
	Norwich	Inland	Kelly Junior High School ¹	25 Mahan Dr	5054	-	2,000	774
	Norwich	Inland	Mahan Elementary School	94 Salem Tpke	5058	-	1,000	599
	Norwich	Inland	Norwich Armory	38 Stott Ave	155819	9,852	7,200	7,200
	Norwich	Inland	Norwich Fire Headquarters	10 North Thames St	5356	-	50	0
	Norwich	Inland	Norwich Free Academy Gym ¹	305 Broadway	5043	-	4,750	1,300
	Norwich	Inland	Norwich High School	191 Hickory St	5063	-	500	260
	Norwich	Inland	Rose City Senior Center ¹	8 Mahan Dr	5048	-	350	60

1. Shelter facility is common to both the American Red Cross (NSS) inventory and the shelter list provided by the Connecticut Department of Emergency Services and Public Protection, Division of Emergency Management and Homeland Security (CT DESPP DEMHS).



5.0 Shelter Analysis

Table 5-5: Shelter Inventory – American Red Cross (continued)

County	Community	Zone	Shelter Name ¹	Address	ARC Shelter #	Usable Sq Ft	Evacuation Capacity	Post Impact Capacity
New London County	Norwich	Inland	Teachers Memorial Middle School	15 Teachers Dr	5047	-	882	175
	Norwich	Inland	Three Rivers Community College--Thames Valley Campus	574 New London Tpke	5062	-	1200	450
	Norwich	Inland	Uncas School ¹	280 Elizabeth St	5053	-	599	120
	Norwich	Inland	Veterans Memorial School	80 Crouch Ave	13053	-	1,320	599
	Oakdale	Inland	Leonard J Tyl Middle School	166 Chesterfield Rd	5028	-	1,000	500
	Oakdale	Inland	Montville High School ¹	800 Old Colchester Rd	5027	-	800	400
	Oakdale	Inland	Oakdale Fire Dept ¹	444 Chapel Hill Rd	5030	-	100	40
	Old Lyme	A	Old Lyme Town Hall	52 Lyme St	137829	-	100	0
	Old Lyme	Inland	Old Lyme Center School	49 Lyme St	75962	-	300	150
	Old Lyme	Inland	Old Lyme High School	69 Lyme St	75963	-	500	275
	Pawcatuck	A	Pawcatuck Neighborhood Center	27 Chase St	5305	-	50	40
	Pawcatuck	Inland	Pawcatuck Middle School	40 Field St	13725	-	200	100
	Pawcatuck	Inland	Stonington High School ¹	176 South Broad St	12848	-	2,919	500
	Preston	Inland	Preston Memorial Elementary School	325 Rte 165	12829	-	200	100
	Preston	Inland	Preston Plains Middle School	1 Rte 164	12937	-	340	170
	Quaker Hill	A	Quaker Hill Fire Dept	17 Old Colchester Rd	13151	-	302	113
	Quaker Hill	A	Quaker Hill School	285 Bloomingdale Rd	12803	-	583	218
	Salem	Inland	Salem Elementary School	200 Hartford Rd	6525	-	1,000	0

1. Shelter facility is common to both the American Red Cross (NSS) inventory and the shelter list provided by the Connecticut Department of Emergency Services and Public Protection, Division of Emergency Management and Homeland Security (CT DESPP DEMHS).



5.0 Shelter Analysis

Table 5-5: Shelter Inventory – American Red Cross (continued)

County	Community	Zone	Shelter Name ¹	Address	ARC Shelter #	Usable Sq Ft	Evacuation Capacity	Post Impact Capacity
New London County	Stonington	Inland	Deans Mill Elementary School	35 Deans Mill Rd	13571	-	300	100
	Taftville	Inland	Wequonnoc Elementary School	155 Providence St	5056	-	500	260
	Uncasville	Inland	Montville Fire Dept ¹	77 Rte 163	5096	-	100	40
	Voluntown	Inland	Voluntown Ambulance	205 Preston City Rd	13018	-	100	50
	Waterford	A	Waterford H S	20 Rope Ferry Rd	12821	-	2,355	833
	Waterford	B	Jordan Fire House	89 Rope Ferry Rd	13659	-	124	46
	Waterford	B	Oswegatchie Fire Department	441 Boston Post Rd	5288	-	156	58
	Waterford	Inland	Clark Lane Middle School	105 Clark Ln	13394	-	942	353
	Waterford	Inland	Cohanzie Elementary School	48 Dayton Rd	12804	-	337	126
	Waterford	Inland	Cohanzie Fire House	53 Dayton Rd	13044	-	62	0
	Waterford	Inland	Waterford Outreach Service Department	1000 Hartford Tpke	5084	-	214	80

1. Shelter facility is common to both the American Red Cross (NSS) inventory and the shelter list provided by the Connecticut Department of Emergency Services and Public Protection, Division of Emergency Management and Homeland Security (CT DESPP DEMHS).



5.0 Shelter Analysis

Table 5-6: Shelter Inventory – CT DESPP DEMHS

Region	Community	Zone	Shelter Name ¹	Address	Capacity		ARC	Pets	Gener- ator	ADA
					20 SF	40 SF				
1	Bridgeport	Inland	6 to 6 Interdistrict Magnet	700 Palisade Avenue	0	0				
1	Bridgeport	A	Aquacultural School	60 St. Stephen Rd	0	0				
1	Bridgeport	A	Barnum School / Waltersville Campus ¹	495 Waterview St and 150 Hallett St	0	0				
1	Bridgeport	B	Bassick High School ¹	1181 Fairfield Ave	0	0				
1	Bridgeport	Inland	Beardsley Elementary ¹	500 Huntington Rd	0	0				
1	Bridgeport	A	Black Rock School ¹	545 Brewster St	0	0				
1	Bridgeport	Inland	Blackham School	425 Thorne St	638	200	Yes	Yes	Yes	Yes
1	Bridgeport	B	Bryant School ¹	230 Poplar St	0	0				
1	Bridgeport	B	Cesar A. Batalla ¹	606 Howard St	0	0				
1	Bridgeport	Inland	Classical Studies ¹	240 Linwood Ave	0	0				
1	Bridgeport	A	Columbus Elementary/ South End School ¹	160 Iranistan Ave	119	290	Yes	Yes	Yes	Yes
1	Bridgeport	B	Curiale Elementary ¹	300 Laurel Ave	0	0				
1	Bridgeport	B	Dunbar School ¹	445 Union Ave	0	0				
1	Bridgeport	Inland	Edison School ¹	115 Boston Terrace	95	56	Yes	Yes		
1	Bridgeport	Inland	Geraldine Johnson ¹	475 Lexington Ave	138	220	Yes	Yes	Yes	Yes
1	Bridgeport	Inland	Hall Elementary ¹	290 Clermont Ave	36	119	Yes	Yes		Yes
1	Bridgeport	Inland	Hallen School ¹	70 Omega Ave	77	134	Yes	Yes		Yes
1	Bridgeport	Inland	Harding High School ¹	1754 Central Ave	502	468	Yes	Yes		Yes
1	Bridgeport	Inland	High Horizon Magnet ¹	JFK Campus 700 Palisade Ave	328	194	Yes			

1. Shelter facility is common to both the American Red Cross (NSS) inventory and the shelter list provided by the Connecticut Department of Emergency Services and Public Protection, Division of Emergency Management and Homeland Security (CT DESPP DEMHS).



5.0 Shelter Analysis

Table 5-6: Shelter Inventory – CT DESPP DEMHS (continued)

Region	Community	Zone	Shelter Name ¹	Address	Capacity		ARC	Pets	Gener-ator	ADA
					20 SF	40 SF				
1	Bridgeport	Inland	Hooker School	138 Roger Williams Rd	504	211	Yes	Yes		Yes
1	Bridgeport	A	Longfellow School ¹	139 Ocean Terrace	187	152	Yes	Yes	Yes	Yes
1	Bridgeport	Inland	Luis Munoz Marin School ¹	479 Helen St	328	188	Yes	Yes	Yes	Yes
1	Bridgeport	Inland	Madison School ¹	376 Wayne St	0	0				
1	Bridgeport	Inland	Maplewood Annex	322 Wells St	0	0				
1	Bridgeport	Inland	Multi-Cultural Magnet	700 Palisade Ave	300	300	Yes			
1	Bridgeport	Inland	Park City Magnet Elementary ¹	1526 Chopsey Hill Rd	164	128	Yes	Yes	Yes	Yes
1	Bridgeport	Inland	Read Middle School ¹	130 Ezra St	242	171	Yes	Yes		Yes
1	Bridgeport	B	Roosevelt School ¹	680 Park Ave	251	148		Yes		Yes
1	Bridgeport	Inland	Sheridan School ¹	280 Tesiny Ave	93	72	Yes	Yes		Yes
1	Bridgeport	Inland	Skane Center School ¹	2977 N. Madison Ave	71	45	Yes	Yes		Yes
1	Bridgeport	B	Tisdale School ¹	250 Hollister	660	335	Yes	Yes	Yes	Yes
1	Bridgeport	Inland	Wilbur Cross Elementary	1775 Reservoir Ave	312	160	Yes	Yes	Yes	Yes
1	Bridgeport	Inland	Winthrop Middle School	85 Eckart St	341	163	Yes	Yes		
1	Darien	Inland	Darien Fire Department	848 Post Rd	100	50			Yes	Yes
1	Darien	Inland	Darien High School ¹	80 High School Lane	830	627	Yes	Yes	Yes	Yes
1	Darien	Inland	Middlesex Middle School ¹	204 Hollow Tree Ridge Rd	627	289	Yes	Yes	Yes	Yes
1	Darien	Inland	Noroton Fire Department	1873 Post Rd	100	50			Yes	Yes
1	Darien	Inland	Noroton Heights Fire Dept.	209 Noroton Ave	100	50			Yes	Yes
1	Darien	Inland	Post 53 EMS HQ	Zero Ledge Ln	150	75			Yes	Yes

1. Shelter facility is common to both the American Red Cross (NSS) inventory and the shelter list provided by the Connecticut Department of Emergency Services and Public Protection, Division of Emergency Management and Homeland Security (CT DESPP DEMHS).



5.0 Shelter Analysis

Table 5-6: Shelter Inventory – CT DESPP DEMHS (continued)

Region	Community	Zone	Shelter Name ¹	Address	Capacity		ARC	Pets	Gener-ator	ADA
					20 SF	40 SF				
1	Darien	Inland	Tokeneke Elementary School ¹	7 Old Farm Rd	122	0	Yes		Yes	Yes
1	Darien	B	Town Hall	2 Renshaw Rd	400	400		Yes		Yes
1	Easton	Inland	Helen Keller Middle School ¹	360 Sport Hill Rd	725	301		Yes	Yes	Yes
1	Easton	Inland	Samuel Staples Elementary ¹	515 Morehouse Rd	438	225	Yes	Yes	Yes	Yes
1	Fairfield	Inland	Black Rock Congregational Church ¹	3731 Black Rd	136	68	Yes			
1	Fairfield	Inland	Dwight School ¹	1600 Redding Rd	945	354	Yes			
1	Fairfield	Inland	Fairfield Ludlowe High School ¹	785 Unquowa Rd	1,890	709	Yes		Yes	
1	Fairfield	Inland	Fairfield Warde High School ¹	757 Melville Ave	1,890	709	Yes		Yes	
1	Fairfield	Inland	Fairfield Woods School ¹	1115 Fairfield Woods Rd	676	253	Yes			
1	Fairfield	A	First Congregational Church	148 Beach Rd	85	42	Yes			
1	Fairfield	Inland	First Presbyterian Church ¹	2475 Easton Tpke	1350	506	Yes		Yes	
1	Fairfield	Inland	Holy Family Church & School ¹	140 Edison Ave	405	152	Yes			
1	Fairfield	Inland	Jennings School ¹	31 Palm Dr	175	87	Yes			
1	Fairfield	Inland	Lady of Assumption Church - School	605 Stratfield Rd	675	253	Yes			
1	Fairfield	Inland	Notre Dame Catholic H.S. ¹	220 Jefferson St	1,890	709	Yes			
1	Fairfield	Inland	St Pius X Church & School ¹	834 Brookside Dr	945	354	Yes			
1	Greenwich	Inland	Central Middle School ¹	9 Indian Rock Ln	267	250	Yes		Yes	Yes
1	Greenwich	Inland	Christ Church	254 E. Putnam Ave	100	100			Yes	
1	Greenwich	Inland	Greenwich High School	10 Hillside Rd	2,000	550	Yes		Yes	Yes
1	Greenwich	Inland	North Street School	381 North St	250	150				Yes

1. Shelter facility is common to both the American Red Cross (NSS) inventory and the shelter list provided by the Connecticut Department of Emergency Services and Public Protection, Division of Emergency Management and Homeland Security (CT DESPP DEMHS).



5.0 Shelter Analysis

Table 5-6: Shelter Inventory – CT DESPP DEMHS (continued)

Region	Community	Zone	Shelter Name ¹	Address	Capacity		ARC	Pets	Gener-ator	ADA
					20 SF	40 SF				
1	Greenwich	Inland	Parkway School	141 Lower Cross Rd	250	150			Yes	Yes
1	Greenwich	Inland	Senior Center	299 Greenwich Ave	130	80				
1	Greenwich	Inland	Western Middle School ¹	Western Junior Hwy	267	250			Yes	Yes
1	Monroe	Inland	Chalk Hill Middle School	345 Fan Hill Rd	250	200	Yes	Yes	Yes	Yes
1	Monroe	Inland	Jockey Hollow School ¹	365 Fan Hill Rd	276	217	Yes	Yes	Yes	Yes
1	Monroe	Inland	Masuk High School ¹	1014 Monroe Tpk	2,000	1,000	Yes	Yes	Yes	Yes
1	Monroe	Inland	Monroe Fire Station 1	18 Shelton Rd	40	20	Yes		Yes	Yes
1	Monroe	Inland	Stepney Fire Station 2	88 Main St	40	20	Yes		Yes	Yes
1	Monroe	Inland	Stevenson Volunteer Fire 2	1258 Monroe Tpke	40	20	Yes		Yes	Yes
1	New Canaan	Inland	East School	54 Little Brook Rd	267	494			Yes	
1	New Canaan	Inland	Lapham Community Center ¹	677 South Ave	150	80	Yes		Yes	
1	New Canaan	Inland	New Canaan High School ¹	11 Farm Rd	1,066	400				
1	New Canaan	Inland	Saxe Middle School ¹	468 South Ave	2,000	300			Yes	
1	New Canaan	Inland	South School ¹	8 Farm Rd	425	160			Yes	
1	New Canaan	Inland	Waveny House	Waveny Pk	450	187				
1	New Canaan	Inland	YMCA ¹	564 South Ave	0	0				
1	Norwalk	Inland	Brien McMahon High School ¹	300 Highland Ave	778	394	Yes	Yes	Yes	Yes
1	Norwalk	Inland	Norwalk Armory	290 New Canaan Ave	0	0				
1	Norwalk	B	Norwalk Emergency Shelter	4 Merritt St	0	0				
1	Norwalk	Inland	Norwalk High School ¹	22 Calvin Murphy Dr	958	479	Yes		Yes	Yes
1	Riverside	Inland	Eastern Middle School ¹	51 Hendrie Ave	507	390	Yes			Yes

1. Shelter facility is common to both the American Red Cross (NSS) inventory and the shelter list provided by the Connecticut Department of Emergency Services and Public Protection, Division of Emergency Management and Homeland Security (CT DESPP DEMHS).



5.0 Shelter Analysis

Table 5-6: Shelter Inventory – CT DESPP DEMHS (continued)

Region	Community	Zone	Shelter Name ¹	Address	Capacity		ARC	Pets	Gener- ator	ADA
					20 SF	40 SF				
1	Riverside	Inland	North Mianus School	309 Palmer Hill Rd	250	150				Yes
1	Stamford	Inland	Belltown Fire Department	8 Dorlen Pl	100	38	Yes		Yes	
1	Stamford	B	Cloonan Middle School ¹	11 West North St	800	400	Yes		Yes	
1	Stamford	B	Emergency Shelter for Men	597 Pacific St	0	0				
1	Stamford	Inland	Glenbrook Fire Dept	17 Arthur Pl	100	0	Yes		Yes	
1	Stamford	Inland	Long Ridge Fire Dept St	366 Old Long Ridge Rd	196	45	Yes		Yes	Yes
1	Stamford	Inland	Rippowam Middle School ¹	381 High Ridge Rd	932	466	Yes		Yes	Yes
1	Stamford	Inland	Scofield Middle Magnet ¹	641 Scofieldtown Rd	560	250	Yes		Yes	Yes
1	Stamford	Inland	Springdale Fire Dept	987 Hope St	0	39	Yes		Yes	
1	Stamford	Inland	St. John Luthern Church	884 Newfield Ave	0	0	Yes			
1	Stamford	B	Stamford Government Ct	888 Washington Blvd	0	100	Yes			
1	Stamford	Inland	Stamford High School ¹	55 Strawberry Hill Ave	720	360	Yes		Yes	Yes
1	Stamford	B	Stamford YMCA	909 Washington Blvd	0	200	Yes		Yes	
1	Stamford	Inland	Turn of River Fire Dept 1	268 Turn of River Rd	120	35	Yes		Yes	
1	Stamford	Inland	West Hill High School	125 Roxbury Rd	900	720	Yes		Yes	Yes
1	Stratford	B	Baldwin Center ¹	1000 West Broad St	298	314	Yes	Yes		Yes
1	Stratford	A	Birdseye Complex ¹	468 Birdseye St	493	208	Yes	Yes	Yes	Yes
1	Stratford	Inland	Bunnell High School ¹	1Bulldog Blvd	735	567	Yes	Yes	Yes	Yes
1	Stratford	Inland	Flood Junior High School ¹	490 Chapel St	1,265	383	Yes	Yes		Yes
1	Stratford	Inland	Second Hill Lane Elementary School ¹	65 Second Hill Ln	661	177	Yes	Yes		Yes
1	Stratford	Inland	Stratford Armory ¹	300 Armory Rd	0	0				

1. Shelter facility is common to both the American Red Cross (NSS) inventory and the shelter list provided by the Connecticut Department of Emergency Services and Public Protection, Division of Emergency Management and Homeland Security (CT DESPP DEMHS).



5.0 Shelter Analysis

Table 5-6: Shelter Inventory – CT DESPP DEMHS (continued)

Region	Community	Zone	Shelter Name ¹	Address	Capacity		ARC	Pets	Gener- ator	ADA
					20 SF	40 SF				
1	Stratford	Inland	Stratford High School ¹	45 North Parade St	560	470	Yes	Yes		Yes
1	Stratford	Inland	Wooster Junior High School	150 Lincoln St	414	266	Yes	Yes		Yes
1	Trumbull	Inland	Trumbull High School ¹	72 Strobel Rd	200	400	Yes		Yes	
1	Weston	Inland	Middle School	135 School Rd	671	295		Yes	Yes	Yes
1	Wilton	Inland	Miller School	217 Wolfpit Rd	591	300	Yes	Yes	Yes	Yes
1	Wilton	Inland	Wilton High School ¹	395 Danbury Rd	1,512	756	Yes	Yes	Yes	Yes
1	Wilton	Inland	Wilton YMCA ¹	404 Danbury Rd	487	301	Yes	Yes		Yes
2	Ansonia	Inland	Ansonia High School	Pulaski Highway	200	200	Yes	Yes	Yes	Yes
2	Ansonia	Inland	Emmett O'Brien Technical School	141 Prindle Ave	0	150	Yes			
2	Bethany	Inland	Amity Regional Jr. High School ¹	190 Luke Hill Rd	400	200	Yes		Yes	Yes
2	Bethany	Inland	Bethany Community School ¹	44 Peck Rd	270	135	Yes		Yes	Yes
2	Branford	A	Branford High School ¹	185 Main St	3,935	3,935	Yes	Yes	Yes	Yes
2	Branford	B	Community Dining Room ¹	30 Harrison Rd	50	50	Yes		Yes	Yes
2	Branford	A	Community House Recreation Center ¹	46 Church Street	830	830	Yes	Yes	Yes	Yes
2	Branford	A	John Sliney School ¹	23 Eades Street	630	630	Yes	Yes	Yes	Yes
2	Branford	Inland	Mary T Murphy School ¹	14 Bushy Plain Road	1,235	1,235	Yes	Yes	Yes	Yes
2	Branford	A	National Guard Armory	87 Montowese St	500	500	Yes		Yes	Yes
2	Branford	Inland	Walsh Intermediate School ¹	185 Damascus Rd	1,955	1,955	Yes	Yes		Yes
2	Cheshire	Inland	Cheshire High School ¹	525 South Main St	6,035	3,017	Yes		Yes	Yes
2	Cheshire	Inland	Cheshire Senior Center	240 Maple Ave	200	400	Yes		Yes	Yes
2	Cheshire	Inland	Highland School ¹	490 Highland Ave	2,280	1,140				Yes

1. Shelter facility is common to both the American Red Cross (NSS) inventory and the shelter list provided by the Connecticut Department of Emergency Services and Public Protection, Division of Emergency Management and Homeland Security (CT DESPP DEMHS).



5.0 Shelter Analysis

Table 5-6: Shelter Inventory – CT DESPP DEMHS (continued)

Region	Community	Zone	Shelter Name ¹	Address	Capacity		ARC	Pets	Gener-ator	ADA
					20 SF	40 SF				
2	Chester	Inland	Congregation Beth Shalom Rodfe Zedek	55 E. Kings Highway	0	100				Yes
2	Chester	Inland	St. Joseph's Parish Center ¹	48 Middlesex Ave	0	100	Yes			Yes
2	Chester	Inland	United Church of Chester	29 West Main St	0	100				Yes
2	Chester	Inland	Whelen Engineering ¹	51 Winthrop Rd	0	250	Yes		Yes	Yes
2	Clinton	A	Clinton Town Hall ¹	54 East Main St	0	0				
2	Clinton	Inland	Jared Eliot School ¹	69 Fairy Dell Rd	300	300	Yes			Yes
2	Clinton	Inland	Joel School ¹	137-B Glenwood Rd	900	900				Yes
2	Clinton	Inland	Morgan High School ¹	27 Killingworth Tpke	200	200	Yes			Yes
2	Deep River	Inland	Deep River Elem School ¹	12 River St	0	100			Yes	
2	Deep River	Inland	John Winthrop Junior High School ¹	1 Winthrop Rd	0	500				
2	Deep River	Inland	Town Hall	174 Main St	100	50			Yes	
2	Derby	Inland	Bradley School ¹	155 David Humphrey Rd	0	100				
2	Derby	Inland	Derby High School ¹	8 Nutmeg Ave	0	150				
2	Durham	Inland	Coginchaug High School - Primary ¹	Picket Ln	0	0				
2	Durham	Inland	Strong School - Secondary	Main St	500	250	Yes	Yes		Yes
2	East Haven	Inland	Deer Run Elementary School ¹	330 Route 80	0	1,120	Yes			Yes
2	East Haven	Inland	East Haven Fire Dept./Co. 3 ¹	1470 North High St	0	0	Yes		Yes	Yes
2	East Haven	A	East Haven Fire Dept./Co. 4 ¹	85 George St	0	60	Yes		Yes	Yes
2	East Haven	Inland	East Haven High School ¹	35 Wheel Barrow Ln	0	5,240	Yes	Yes	Yes	Yes
2	East Haven	A	East Haven Middle School ¹	67 Hudson St	0	1,755	Yes			Yes

1. Shelter facility is common to both the American Red Cross (NSS) inventory and the shelter list provided by the Connecticut Department of Emergency Services and Public Protection, Division of Emergency Management and Homeland Security (CT DESPP DEMHS).



5.0 Shelter Analysis

Table 5-6: Shelter Inventory – CT DESPP DEMHS (continued)

Region	Community	Zone	Shelter Name ¹	Address	Capacity		ARC	Pets	Gener-ator	ADA
					20 SF	40 SF				
2	East Haven	B	East Haven Senior Center ¹	91 Taylor Ave	0	200	Yes		Yes	Yes
2	East Haven	Inland	Hayes Elementary School ¹	1 Maple Ave	0	410	Yes			Yes
2	East Haven	A	St. Claires Church Hall ¹	234 Coe Ave	0	150	Yes			Yes
2	Essex	Inland	Essex Elementary School ¹	108 Main	600	200			Yes	
2	Guilford	B	Guilford Community Center ¹	32 Church St	0	0				
2	Guilford	Inland	Guilford High School ¹	605 New England Rd	0	35				
2	Haddam	Inland	Haddam Firehouse	439 Saybrook Rd	0	75			Yes	
2	Hamden	Inland	Alice Peck School ¹	35 Hill field Rd	1,000	500	Yes	Yes		Yes
2	Hamden	Inland	Bear Path School	10 Kirk Rd	900	450		Yes		Yes
2	Hamden	Inland	Church Street School	95 Church St	1,400	700		Yes		Yes
2	Hamden	Inland	Dunbar Hill School ¹	315 Lane St	900	450	Yes	Yes		Yes
2	Hamden	Inland	Hamden High School ¹	2040 Dixwell Ave	4,800	2,400	Yes	Yes	Yes	Yes
2	Hamden	Inland	Hamden Middle School ¹	2623 Dixwell Ave	3,800	1,900		Yes	Yes	Yes
2	Hamden	Inland	Hamden PS Training ¹	1255 Shepard Ave	100	50	Yes	Yes	Yes	
2	Hamden	Inland	Helen Street School ¹	285 Helen St	1,400	700	Yes	Yes		Yes
2	Hamden	Inland	M.L. Keefe Center ¹	11 Pine St	600	300	Yes	Yes		Yes
2	Hamden	Inland	Miller Senior Center ¹	2901 Dixwell Ave	320	160	Yes	Yes		Yes
2	Hamden	Inland	Quinnipiac Univ	275 Mt. Carmel Ave	2,663	1,331	Yes	Yes	Yes	Yes
2	Hamden	Inland	Ridge Hill School	120 Carew Rd	1,600	800		Yes		Yes
2	Hamden	Inland	Ridge Hill School	120 Carew Rd	0	0				
2	Hamden	Inland	Shepard Glen School	Skiff Street Ext	600	300		Yes		Yes

1. Shelter facility is common to both the American Red Cross (NSS) inventory and the shelter list provided by the Connecticut Department of Emergency Services and Public Protection, Division of Emergency Management and Homeland Security (CT DESPP DEMHS).



5.0 Shelter Analysis

Table 5-6: Shelter Inventory – CT DESPP DEMHS (continued)

Region	Community	Zone	Shelter Name ¹	Address	Capacity		ARC	Pets	Gener-ator	ADA
					20 SF	40 SF				
2	Hamden	Inland	Spring Glen School ¹	1908 Whitney Ave	1600	800	Yes	Yes		Yes
2	Hamden	Inland	Spring Glen School ¹	1908 Whitney Ave	0	0				
2	Hamden	Inland	West Woods School	350 West Todd St	900	450		Yes		Yes
2	Hamden	Inland	Wintergreen Magnet School	670 Wintergreen Ave	1600	800		Yes		Yes
2	Higganum	Inland	Haddam Killingworth High School ¹	95 Little City Rd	0	220	Yes		Yes	
2	Killingworth	Inland	Haddam/Killingworth Middle School ¹	451 Route 81	2400	1200	Yes		Yes	Yes
2	Killingworth	Inland	Killingworth Elementary School ¹	340 Route 81	600	300	Yes		Yes	Yes
2	Killingworth	Inland	St. Lawrence Church ¹	7 Hemlock Dr	100	40	Yes		Yes	Yes
2	Madison	Inland	Brown Middle School ¹	980 Durham Rd	1,750	875	Yes			
2	Madison	Inland	Daniel Hand High School ¹	302 Green Hill Rd	2,500	1,000	Yes		Yes	Yes
2	Madison	Inland	North Madison Congregational Church ¹	1271 Durham Rd Route 79	180	90	Yes	Yes	Yes	
2	Madison	A	Town Campus Gymnasium ¹	4 Campus Dr	440	220	Yes	Yes	Yes	Yes
2	Meriden	Inland	Lincoln Middle School ¹	164 Centennial Ave	3,410	885	Yes		Yes	Yes
2	Meriden	Inland	Maloney High School	121 Gravel St	4,126	1,530	Yes		Yes	
2	Meriden	Inland	Max E Maranunick Senior Center ¹	22-26 West Main St	350	350			Yes	Yes
2	Meriden	Inland	Platt High School	220 Coe Ave	4,765	1,110	Yes	Yes	Yes	
2	Meriden	Inland	Washington Middle School ¹	1225 North Broad St	300	300	Yes		Yes	Yes
2	Middlefield	Inland	Memorial Middle School ¹	124 Hubbard St	0	150	Yes		Yes	Yes
2	Milford	Inland	East Shore Middle School	240 Chapel St	1,068	534	Yes	Yes		Yes
2	Milford	Inland	Foran High School ¹	80 Foran Rd	2,465	1,232	Yes	Yes		Yes

1. Shelter facility is common to both the American Red Cross (NSS) inventory and the shelter list provided by the Connecticut Department of Emergency Services and Public Protection, Division of Emergency Management and Homeland Security (CT DESPP DEMHS).



5.0 Shelter Analysis

Table 5-6: Shelter Inventory – CT DESPP DEMHS (continued)

Region	Community	Zone	Shelter Name ¹	Address	Capacity		ARC	Pets	Gener-ator	ADA
					20 SF	40 SF				
2	Milford	Inland	Harbor Side Middle School	175 High St	1,068	534	Yes	Yes		Yes
2	Milford	Inland	Jonathan Law High School ¹	20 Lansdale Ave	2,247	1,120	Yes	Yes	Yes	Yes
2	Milford	Inland	Meadow Side School	80 Seamans Ln	1,068	534	Yes	Yes		Yes
2	Milford	Inland	Orchard Hill School	185 Marino Dr	1,068	534	Yes	Yes		Yes
2	Milford	Inland	Platt Technical School	600 Orange Ave	4,272	2,136	Yes	Yes		Yes
2	Milford	Inland	Pumpkin Delight School	24 Art St	1,068	534	Yes	Yes		Yes
2	Milford	Inland	Senior Citizen Center ¹	9 Jepson Dr	250	125	Yes	Yes	Yes	Yes
2	New Haven	A	Columbus House	586 Ella T. Grasso Blvd	0	0				
2	New Haven	B	Emmanuel Baptist Shelter	645 Grand Ave	0	0				
2	New Haven	Inland	Hill Regional Career High School ¹	140 Legion Ave	2,900	1,660	Yes	Yes	Yes	Yes
2	New Haven	Inland	James Hillhouse High School ¹	480 Sherman Ave	8,535	5,600	Yes	Yes	Yes	Yes
2	New Haven	A	NH Regional Fire Training Academy	230 Ella Grasso Blvd	275	195	Yes	Yes	Yes	Yes
2	New Haven	Inland	Southern CT State University Pelz Gym ¹	505 Fitch St	375	280	Yes	Yes	Yes	Yes
2	New Haven	B	Wilbur Cross High School ¹	181 Mitchell Dr	4,410	2,500	Yes	Yes	Yes	Yes
2	North Branford	Inland	Jerome Harrison Elementary School ¹	335 Foxon Rd	1,865	1,865	Yes	Yes		Yes
2	North Branford	Inland	North Branford High School ¹	49 Caputo Rd	3,255	3,255	Yes	Yes		Yes
2	North Branford	Inland	North Branford Intermediate School ¹	654 Foxon Rd	1,420	1,420	Yes	Yes	Yes	Yes
2	North Branford	Inland	Stanley T. Williams School ¹	1332 Middletown Ave	820	820	Yes	Yes		Yes
2	North Branford	Inland	Totoket Valley Middle School ¹	1388 Middletown Ave	1,320	1,320	Yes	Yes		Yes
2	North Haven	Inland	Clintonville Rd Elementary School	456 Clintonville Rd	310	155				

1. Shelter facility is common to both the American Red Cross (NSS) inventory and the shelter list provided by the Connecticut Department of Emergency Services and Public Protection, Division of Emergency Management and Homeland Security (CT DESPP DEMHS).



5.0 Shelter Analysis

Table 5-6: Shelter Inventory – CT DESPP DEMHS (continued)

Region	Community	Zone	Shelter Name ¹	Address	Capacity		ARC	Pets	Gener-ator	ADA
					20 SF	40 SF				
2	North Haven	Inland	Green Acres Elementary School	146 Upper State St	302	151				Yes
2	North Haven	Inland	Mildred A. Wakeley Recreation Center	3 Linsley St	228	114			Yes	Yes
2	North Haven	Inland	Monotowese Elementary School	145 Fitch St	300	150				Yes
2	North Haven	Inland	North Haven High School ¹	221 Elm St	924	462	Yes		Yes	Yes
2	North Haven	Inland	North Haven Middle School	55 Bailey Rd	448	224				Yes
2	North Haven	Inland	North Haven Senior Center	189 Pool Rd	140	70				Yes
2	North Haven	Inland	Ridge Road Elementary School	1341 Ridge Rd	314	157				
2	Old Saybrook	A	Old Saybrook High School ¹	1111 Boston Post Rd	500	250	Yes		Yes	Yes
2	Orange	Inland	High Plains Community Center ¹	525 Orange Center Rd Route 152	100	645	Yes	Yes	Yes	Yes
2	Orange	Inland	Laurel Gardens ¹	245 Indian River Rd	10	100	Yes	Yes	Yes	Yes
2	Orange	Inland	Turkey Hill Elementary School ¹	441 Turkey Hill Rd	100	1,260	Yes	Yes		
2	Seymour	Inland	Chatfield School	51 Skokorat St	250	100			Yes	Yes
2	Seymour	Inland	Seymour High School ¹	2 Botsford Rd	600	200		Yes		Yes
2	Seymour	Inland	Seymour Middle School	211 Mountain Rd	500	200			Yes	Yes
2	Shelton	Inland	Area Congregations Together - Spooner House	30 Todd Rd	0	0				
2	Shelton	Inland	Echo Hose Ambulance Corps	100 Meadow St	0	0				
2	Shelton	Inland	Shelton City Hall	54 Hill St	0	0				
2	Shelton	Inland	Shelton High School ¹	120 Meadow St	0	0				
2	Wallingford	Inland	Dag Hammarskjold Middle School ¹	106 Pond Hill Rd	912	456	Yes	Yes		Yes

1. Shelter facility is common to both the American Red Cross (NSS) inventory and the shelter list provided by the Connecticut Department of Emergency Services and Public Protection, Division of Emergency Management and Homeland Security (CT DESPP DEMHS).



5.0 Shelter Analysis

Table 5-6: Shelter Inventory – CT DESPP DEMHS (continued)

Region	Community	Zone	Shelter Name ¹	Address	Capacity		ARC	Pets	Gener- ator	ADA
					20 SF	40 SF				
2	Wallingford	Inland	James Moran Middle School ¹	141 Hope Hill Rd	900	450	Yes	Yes		Yes
2	Wallingford	Inland	Lyman Hall High School ¹	70 Pond Hill Rd	1,220	610	Yes	Yes		Yes
2	Wallingford	Inland	Sheehan High School	142 Hope Hill Rd	100	0	Yes	Yes		Yes
2	Wallingford	Inland	Wallingford Emergency Shelter	123 Quinnipiac St	0	0				
2	West Haven	Inland	Alma E. Pagels School	26 Benham Hill Rd	0	670	Yes			Yes
2	West Haven	Inland	Bailey Middle School	106 Morgan Ln	0	622	Yes			Yes
2	West Haven	Inland	Carrigan Middle School	2 Tetlow St	0	2,645	Yes		Yes	Yes
2	West Haven	Inland	Forest Elementary School	95 Burwell Rd	0	100	Yes			Yes
2	West Haven	Inland	Thompson Elementary School	165 Richards St	0	200	Yes			Yes
2	West Haven	B	West Haven High School	1 McDonough Plaza	0	1635	Yes			Yes
2	West Haven	B	West Haven Town Hall Senior Ctr. ¹	355 Main St	0	90	Yes		Yes	Yes
2	Westbrook	B	Daisy Ingraham Elementary School ¹	105 Goodspeed Dr	350	500	Yes	Yes	Yes	Yes
2	Westbrook	A	Westbrook Armory ¹	37 Brookside Ave	0	0				
2	Westbrook	Inland	Westbrook High School ¹	156 McVeagh Rd	200	300	Yes	Yes	Yes	Yes
2	Westbrook	Inland	Westbrook Middle School	154 McVeagh Rd	200	350	Yes	Yes	Yes	Yes
2	Woodbridge	Inland	Amity High School ¹	25 Newton Rd	0	6,095	Yes	Yes	Yes	Yes
2	Woodbridge	Inland	Woodbridge Senior Center ¹	4 Meetinghouse Ln	0	285	Yes	Yes	Yes	Yes
3	Andover	Inland	Andover Elementary School	35 School St	334	167	Yes	Yes	Yes	Yes
3	Avon	Inland	Avon Congregtional Church	6 West Main St	500	250				
3	Avon	Inland	Avon Fire Co. 1	25 Darling Dr	93	46			Yes	
3	Avon	Inland	Avon High School	510 West Avon Rd	783	392			Yes	Yes

1. Shelter facility is common to both the American Red Cross (NSS) inventory and the shelter list provided by the Connecticut Department of Emergency Services and Public Protection, Division of Emergency Management and Homeland Security (CT DESPP DEMHS).



5.0 Shelter Analysis

Table 5-6: Shelter Inventory – CT DESPP DEMHS (continued)

Region	Community	Zone	Shelter Name ¹	Address	Capacity		ARC	Pets	Gener-ator	ADA
					20 SF	40 SF				
3	Avon	Inland	Avon Middle School	375 West Avon Rd	820	410				
3	Avon	Inland	Avon Old Farms Hotel	279 Avon Mountain Rd	319	160				Yes
3	Avon	Inland	Avon Senior Center	635 West Avon Rd	93	46				Yes
3	Avon	Inland	Memorial United Methodist	867 West Avon Rd	120	60				
3	Avon	Inland	Pine Grove Elementary Sch.	151 Scoville Rd	188	94			Yes	
3	Avon	Inland	Roaring Brook Elementary Sch.	30 Old Wheeler Rd	460	230				
3	Avon	Inland	St. Anne's Rectory	289 Arch St	130	65				
3	Avon	Inland	St. Francis Care Facility	35 Nod Road	650	325			Yes	
3	Avon	Inland	St. Matthew Lutheran Church	224 Lovely St	51	26				
3	Avon	Inland	Thompson Brook Grade 5-6 School	150 Thompson Rd	270	135			Yes	Yes
3	Avon	Inland	Valley Community Baptist Church	590 West Avon Rd	600	300				
3	Avon	Inland	West Avon Congregational Church	280 Country Club Rd	408	204				
3	Bloomfield	Inland	Bloomfield - Carmen Arace Middle School	390 Park Ave	350	382		Yes	Yes	Yes
3	Bloomfield	Inland	Bloomfield Fire Dept.	18 Wintonbury Ave	60	30	Yes		Yes	Yes
3	Bolton	Inland	Bolton Fire Department	168 Bolton Center Dr	50	0			Yes	Yes
3	Bolton	Inland	Herrick Park	29 Hebron Rd	45	0		Yes	Yes	Yes
3	Bristol	Inland	Bristol Central High	480 Wolcott St	360	0	Yes	Yes	Yes	Yes
3	Bristol	Inland	Chippens Hill Middle School	551 Peacedale St	600	0		Yes	Yes	Yes
3	Bristol	Inland	Little League Center	335 Mix St	137	68	Yes	Yes		Yes
3	Bristol	Inland	Prospect United Methodist Church	99 Summer St	186	93	Yes			Yes

1. Shelter facility is common to both the American Red Cross (NSS) inventory and the shelter list provided by the Connecticut Department of Emergency Services and Public Protection, Division of Emergency Management and Homeland Security (CT DESPP DEMHS).



5.0 Shelter Analysis

Table 5-6: Shelter Inventory – CT DESPP DEMHS (continued)

Region	Community	Zone	Shelter Name ¹	Address	Capacity		ARC	Pets	Gener-ator	ADA
					20 SF	40 SF				
3	Bristol	Inland	South Side School	21 Tuttle Rd	507	253	Yes	Yes		Yes
3	Burlington	Inland	Burlington Town Hall	200 Spielman Hwy	40	20			Yes	
3	Burlington	Inland	Har-Bur Middle School	26 Lyon Rd	0	0			Yes	
3	Burlington	Inland	Lake Garda Elementary	61 Monce Rd	0	0			Yes	
3	Burlington	Inland	Lewis Mills High School	24 Lyon Rd	60	0			Yes	
3	Canton	Inland	Canton Community Center	40 Dyer Ave	130	65		Yes		Yes
3	Canton	Inland	Canton Jr. Sr High	76 Symonds Ave	707	353	Yes	Yes		Yes
3	Canton	Inland	Cherry Brook Primary School	4 Barbourtown Rd	202	101	Yes	Yes	Yes	Yes
3	Cromwell	Inland	Coles Road Fire House ¹	105 Coles Rd	50	25	Yes		Yes	Yes
3	Cromwell	Inland	Court Street Fire House	82 Court St	50	50			Yes	Yes
3	Cromwell	Inland	Cromwell High School ¹	34 Evergreen Rd	50	50			Yes	Yes
3	Cromwell	Inland	Cromwell Town Hall ¹	41 West St	100	100	Yes	Yes	Yes	Yes
3	Cromwell	Inland	Woodside Intermediate School	30 Woodside Rd	100	100			Yes	Yes
3	East Granby	Inland	Allgrove School	33 Turkey Hills Rd	214	107	Yes		Yes	Yes
3	East Granby	Inland	East Granby Community Center	9 Memorial Dr	45	22			Yes	Yes
3	East Granby	Inland	East Granby Congregational Ch	9 Rainbow Rd	76	38	Yes			Yes
3	East Granby	Inland	East Granby Middle High School	95 South Main St	0	0	Yes			Yes
3	East Granby	Inland	Higley Village	53 South Main St	400	0	Yes		Yes	Yes
3	East Granby	Inland	Metacomet Village	47 North Main St	2,800	0	Yes		Yes	Yes
3	East Granby	Inland	Seymour School	185 Hartford Ave	214	107	Yes			Yes
3	East Hampton	Inland	East Hampton High School ¹	15 N Maple St	600	125			Yes	

1. Shelter facility is common to both the American Red Cross (NSS) inventory and the shelter list provided by the Connecticut Department of Emergency Services and Public Protection, Division of Emergency Management and Homeland Security (CT DESPP DEMHS).



5.0 Shelter Analysis

Table 5-6: Shelter Inventory – CT DESPP DEMHS (continued)

Region	Community	Zone	Shelter Name ¹	Address	Capacity		ARC	Pets	Gener- ator	ADA
					20 SF	40 SF				
3	East Hartford	Inland	East Hartford High School	869 Forbes St	0	0	Yes		Yes	Yes
3	East Hartford	Inland	East Hartford Middle School	777 Burnside Ave	805	0				
3	East Hartford	Inland	East Hartford Town Hall	740 Main St	100	0				
3	East Hartford	Inland	First Assembly of God Church	1492 Silver Ln	0	0				
3	East Hartford	Inland	John Langford School	61 Alps Dr	460	0				
3	East Hartford	Inland	Northend Senior Center	30 Remington Rd	54	0				
3	East Hartford	Inland	Southend Senior Center	70 Canterbury St	0	0				
3	East Hartford	Inland	St Issac Jogues Church	1 Community St	111	0				
3	East Windsor	Inland	East Windsor High School	76 South Main	10	0				
3	East Windsor	Inland	East Windsor Senior Center	125 Main St	0	0				
3	Ellington	Inland	Ellington High	37 Maple St	530	265			Yes	
3	Ellington	Inland	Ellington Middle School	46 Middle Butcher Rd	400	200	Yes		Yes	
3	Enfield	Inland	Enfield High	1264 Enfield St	1,665	495	Yes	Yes	Yes	Yes
3	Enfield	Inland	Fermi High	124 North Maple St	2,390	525	Yes	Yes	Yes	Yes
3	Enfield	Inland	JFK Middle School	155 Raffia Rd	1,470	325		Yes	Yes	Yes
3	Farmington	Inland	Farmington High School	10 Monteith Dr	400	400		Yes	Yes	Yes
3	Farmington	Inland	Robbins Middle School	20 Wolf Pit Rd	532	266	Yes		Yes	Yes
3	Farmington	Inland	St James Episopal Church	3 Mountain Rd	250	43	Yes			Yes
3	Glastonbury	Inland	Glastonbury High School	330 Hubbard St	600	1200		Yes	Yes	
3	Glastonbury	Inland	Nayaug Elementary School	222 Old Maids Ln	360	180	Yes		Yes	

1. Shelter facility is common to both the American Red Cross (NSS) inventory and the shelter list provided by the Connecticut Department of Emergency Services and Public Protection, Division of Emergency Management and Homeland Security (CT DESPP DEMHS).



5.0 Shelter Analysis

Table 5-6: Shelter Inventory – CT DESPP DEMHS (continued)

Region	Community	Zone	Shelter Name ¹	Address	Capacity		ARC	Pets	Gener- ator	ADA
					20 SF	40 SF				
3	Glastonbury	Inland	Public Safety Complex Ambulance Bldg	2108 Main St	40	40	Yes		Yes	
3	Glastonbury	Inland	Smith Middle School	216 Addison Rd	736	367	Yes		Yes	
3	Granby	Inland	Granby Memorial High School	315 Salmon Brook St	890	445	Yes			
3	Granby	Inland	Granby Memorial Middle School	321 Salmon Brook St	300	150	Yes			
3	Granby	Inland	Granby Senior Center	15C N Granby Rd	195	97				Yes
3	Hartford	Inland	Faith SDA 3 Angels Community Service	500 Woodland St	105	53	Yes			Yes
3	Hartford	Inland	Hartford Armory	360 Broad St	0	0				
3	Hartford	Inland	Hartford Pope Park	30 Pope Park Dr	150	150				Yes
3	Hartford	Inland	Hartford Public High School	55 Forest St	1,620	810			Yes	
3	Hartford	Inland	Immaculate Conception Shelter	560 Park St	0	0				
3	Hartford	Inland	My Sister's Place - No freeze	102 Pliny St	0	0				
3	Hartford	Inland	Salvation Army Marshall House	225 South Marshall St	0	0				
3	Hartford	Inland	Salvation Army No Freeze Shelter	255 Washington St	0	0				
3	Hartford	Inland	Salvation Army South End Complex - No freeze	225 Washington St	0	0				
3	Hartford	Inland	Second Church of Christ	307 Main St	0	0				
3	Hebron	Inland	R.H.A.M. High School	85 Wall St	100	100	Yes		Yes	Yes
3	Manchester	Inland	Manchester High School	134 East Middle Tpke	1,767	415			Yes	Yes
3	Manchester	Inland	Manchester Senior Center	549 Middle Tpke East	208	104	Yes		Yes	Yes
3	Middletown	Inland	Middletown High School ¹	200 LaRosa Ln	578	289		Yes	Yes	Yes

1. Shelter facility is common to both the American Red Cross (NSS) inventory and the shelter list provided by the Connecticut Department of Emergency Services and Public Protection, Division of Emergency Management and Homeland Security (CT DESPP DEMHS).



5.0 Shelter Analysis

Table 5-6: Shelter Inventory – CT DESPP DEMHS (continued)

Region	Community	Zone	Shelter Name ¹	Address	Capacity		ARC	Pets	Gener-ator	ADA
					20 SF	40 SF				
3	Middletown	Inland	St. Francis Comm Center ¹	Elm St	386	120				Yes
3	Middletown	Inland	Woodrow Wilson Middle School ¹	311 Hunting Hill Ave	241	193				Yes
3	Moodus	Inland	Nathan Hale Ray High School ¹	15 School Dr	0	0		Yes	Yes	Yes
3	Newington	Inland	John Wallace Middle School	71 Hallaren Rd	1,021	211	Yes			Yes
3	Newington	Inland	Martin Kellog Middle School	155 Harding Ave	369	184	Yes			Yes
3	Newington	Inland	Newington High School	605 Willard Ave	628	314			Yes	Yes
3	Newington	Inland	Newington Town Hall	131 Cedar St	410	175	Yes		Yes	Yes
3	Newington	Inland	Senior & Disabled Center	120 Cedar St	216	53	Yes		Yes	Yes
3	Plainville	Inland	Linden St. Elementary School	69 Linden St	250	125	Yes		Yes	Yes
3	Plainville	Inland	Middle School of Plainville	150 Northwest Dr	451	225	Yes		Yes	Yes
3	Plainville	Inland	Plainville High School	47 Robert Holcolmb	800	400	Yes		Yes	Yes
3	Plainville	Inland	Plainville Senior Center	200 East St	176	88	Yes		Yes	Yes
3	Plainville	Inland	Toffolon Elementary School	145 Northwest Dr	200	72			Yes	Yes
3	Plainville	Inland	Wheeler Elementary School	15 Cleveland Memorial Dr	200	100				Yes
3	Portland	Inland	Portland High School	95 High St	160	80	Yes	Yes	Yes	Yes
3	Rocky Hill	Inland	Fire Company 3	3050 Main St	70	35	Yes		Yes	Yes
3	Rocky Hill	Inland	Fire Station 1	739 Old Main St	40	20	Yes		Yes	Yes
3	Rocky Hill	Inland	Fire Station 2	52 New Britian Ave	50	25	Yes		Yes	Yes
3	Rocky Hill	Inland	Town Hall	761 Old Main St	400	200	Yes		Yes	Yes
3	Simsbury	Inland	Center for Renewal Presbyterian Ch	124 Old Farms Rd	28	14				

1. Shelter facility is common to both the American Red Cross (NSS) inventory and the shelter list provided by the Connecticut Department of Emergency Services and Public Protection, Division of Emergency Management and Homeland Security (CT DESPP DEMHS).



5.0 Shelter Analysis

Table 5-6: Shelter Inventory – CT DESPP DEMHS (continued)

Region	Community	Zone	Shelter Name ¹	Address	Capacity		ARC	Pets	Gener-ator	ADA
					20 SF	40 SF				
3	Simsbury	Inland	Simsbury First Church	689 Hopmeadow St	100	435			Yes	Yes
3	Simsbury	Inland	Simsbury High School	34 Farms Village Rd	0	0				
3	Simsbury	Inland	Squadron Line School	44 Squadron Line Rd	780	340	Yes		Yes	
3	Simsbury	Inland	Tootin Hill School	25 Nimrod Rd	500	250			Yes	Yes
3	Somers	Inland	Somers High School	Ninth District	590	295		Yes	Yes	Yes
3	Tolland	Inland	Birch Grove School	247 Rhodes Rd	240	120	Yes		Yes	Yes
3	Tolland	Inland	First Congregational Church	45 Tolland Green	84	42	Yes			Yes
3	Tolland	Inland	Tolland High School	1 Eagle Hill Dr	1,100	525	Yes		Yes	Yes
3	Tolland	Inland	Tolland Intermediate School	96 Old Post Rd	400	200	Yes			
3	Tolland	Inland	Tolland Middle School	1 Falcon Way	390	195	Yes			
3	Tolland	Inland	Tolland Senior Center	674 Tolland Stage Rd	52	26	Yes		Yes	
3	Tolland	Inland	Tolland Town Hall	21 Tolland Green	164	82				Yes
3	Vernon	Inland	Rockville High School	70 Loveland Hill Rd	0	0				
3	Vernon	Inland	Vernon Center Middle School	777 Hartford Turnpike	0	0				
3	West Hartford	Inland	Elmwood Community Center	1106 New Britain Ave	0	0				
3	Wethersfield	Inland	Silas Dean Middle School	551 Silas Dean Hwy	600	125	Yes			Yes
3	Wethersfield	Inland	Webb Elementary	51 Willow St	250	125	Yes			Yes
3	Wethersfield	Inland	Wethersfield High School	411 Wolcott Hill Rd	750	250	Yes		Yes	Yes
3	Wethersfield	Inland	William Pitkin Community Center	30 Greenfield St	330	165			Yes	Yes
3	Windsor Locks	Inland	North Street School	325 North St	260	130	Yes			Yes
3	Windsor Locks	Inland	Safety Complex	3 Volunteer Dr	95	47	Yes		Yes	Yes

1. Shelter facility is common to both the American Red Cross (NSS) inventory and the shelter list provided by the Connecticut Department of Emergency Services and Public Protection, Division of Emergency Management and Homeland Security (CT DESPP DEMHS).



5.0 Shelter Analysis

Table 5-6: Shelter Inventory – CT DESPP DEMHS (continued)

Region	Community	Zone	Shelter Name ¹	Address	Capacity		ARC	Pets	Gener- ator	ADA
					20 SF	40 SF				
3	Windsor Locks	Inland	South Street School	87 South St	260	130	Yes			Yes
3	Windsor Locks	Inland	Windsor Locks High School	58 South Elm St	617	308			Yes	Yes
3	Windsor Locks	Inland	Windsor Locks Middle School	7 Center St	430	215	Yes			Yes
3	Windsor Locks	Inland	Windsor Locks Senior Center	41 Oak St	247	108	Yes		Yes	Yes
4	Ashford	Inland	Ashford School	440 Westford Rd	400	200	Yes		Yes	Yes
4	Ashford	Inland	Saint Philip Parish Center	Route 44 64 Pompey Hill Rd	300	150	Yes			
4	Ashford	Inland	Webster Boy Scout Camp	31 Ashford Center Rd	500	130	Yes	Yes	Yes	Yes
4	Bozrah	Inland	Bozrah Fire Department	239 Fitchville Rd	100	30	Yes		Yes	Yes
4	Brooklyn	Inland	Brooklyn Community Center	31 Tiffany St	56	33	Yes	Yes		Yes
4	Brooklyn	Inland	Brooklyn Jr. High	119 Gorman St	860	275	Yes	Yes	Yes	Yes
4	Brooklyn	Inland	Senior Citizen's Center	69 South Main St	100	69	Yes	Yes	Yes	Yes
4	Chaplin	Inland	Chaplin Elementary School	240 Palmer Rd	220	110	Yes	Yes	Yes	Yes
4	Chaplin	Inland	Chaplin Sr. Center	132 Chaplin St	197	94	Yes		Yes	Yes
4	Colchester	Inland	Bacon Academy ¹	611 Norwich Ave	0	0				
4	Columbia	Inland	H. W. Porter Elementary School	3 School House Rd	790	329	Yes		Yes	Yes
4	Coventry	Inland	Coventry High School	78 Ripley Hill Rd	600	300	Yes	Yes	Yes	Yes
4	East Lyme	Inland	East Lyme Community Center ¹	37 Society Rd	400	200	Yes	Yes	Yes	Yes
4	East Lyme	Inland	East Lyme High School ¹	30 Chesterfield Rd	2,800	1,100	Yes	Yes	Yes	Yes
4	East Lyme	Inland	East Lyme Middle School ¹	31 Society Rd	1,200	700	Yes	Yes	Yes	Yes
4	East Lyme	Inland	Flanders School ¹	165 Boston Post Rd	200	75	Yes	Yes		Yes

1. Shelter facility is common to both the American Red Cross (NSS) inventory and the shelter list provided by the Connecticut Department of Emergency Services and Public Protection, Division of Emergency Management and Homeland Security (CT DESPP DEMHS).



5.0 Shelter Analysis

Table 5-6: Shelter Inventory – CT DESPP DEMHS (continued)

Region	Community	Zone	Shelter Name ¹	Address	Capacity		ARC	Pets	Gener-ator	ADA
					20 SF	40 SF				
4	East Lyme	Inland	Lillie B. Hayes School ¹	29 Society Rd	600	500	Yes	Yes		Yes
4	Eastford	Inland	Eastford Baptist Church	133 Union Rd	2,000	1,000	Yes			Yes
4	Eastford	Inland	Eastford Congregational	8 Church Rd	600	300	Yes			Yes
4	Eastford	Inland	Eastford Elementary	12 Westford Rd	760	380	Yes	Yes	Yes	Yes
4	Eastford	Inland	Eastford Fire 1	10 Westford Rd	0	0				
4	Fishers Island	Inland	Fishers Island School	1 Greenwood Rd	0	0				
4	Franklin	Inland	Franklin Fire Department	5 Tyler Dr	200	100	Yes	Yes	Yes	Yes
4	Franklin	Inland	Franklin School ¹	206 Pond Rd	700	200	Yes	Yes		Yes
4	Franklin	Inland	Franklin Town Hall	7 Meetinghouse Hill Rd	75	40	Yes		Yes	Yes
4	Griswold	Inland	Griswold Fire Department ¹	833 Voluntown Rd	51	25	Yes		Yes	Yes
4	Groton Town	Inland	Fitch High School ¹	101 Groton Long Point Rd	2,200	1,500	Yes		Yes	Yes
4	Groton Town	Inland	Groton Municipal Building ¹	295 Meridian St	450	200	Yes		Yes	Yes
4	Groton Town	B	Senior Center	102 Newtown Rd	250	140	Yes	Yes	Yes	Yes
4	Groton Town	Inland	West Side Middle School ¹	250 Brandegee Ave	929	198	Yes			Yes
4	Hampton	Inland	Hampton Congregational Church	271 Main St	250	93	Yes			
4	Hampton	Inland	Hampton Elementary School	380 Main St	430	81	Yes		Yes	Yes
4	Killingly	Inland	Killingly Intermed School	1599 Upper Maple	1,628	369		Yes	Yes	Yes
4	Lebanon	Inland	Lyman High School ¹	917 Exeter Rd	1,000	450		Yes	Yes	Yes
4	Ledyard	Inland	Ledyard High School	24 Gallup Hill Rd	1,390	640	Yes	Yes	Yes	Yes
4	Ledyard	Inland	Ledyard Middle School	1860 Rte 12	440	175	Yes	Yes		Yes

1. Shelter facility is common to both the American Red Cross (NSS) inventory and the shelter list provided by the Connecticut Department of Emergency Services and Public Protection, Division of Emergency Management and Homeland Security (CT DESPP DEMHS).



5.0 Shelter Analysis

Table 5-6: Shelter Inventory – CT DESPP DEMHS (continued)

Region	Community	Zone	Shelter Name ¹	Address	Capacity		ARC	Pets	Gener-ator	ADA
					20 SF	40 SF				
4	Lisbon	Inland	Lisbon Central School ¹	15 Newent Rd	1,000	500	Yes	Yes	Yes	Yes
4	Lisbon	Inland	Lisbon Senior Center	11 Newent Rd	200	75	Yes			Yes
4	Lyme	Inland	Hadlyme Fire Dept.	Norwich Salem Rd	50	25	Yes		Yes	
4	Lyme	Inland	Lyme Consolidated School	478 Hamburg Rd	200	100	Yes			
4	Lyme	Inland	Rte 156 Fire House	213 Hamburg Rd	100	45	Yes		Yes	
4	Mansfield	Inland	E.O. Smith High School	1235 Storrs Rd, Rt 195	1700	875	Yes	Yes	Yes	Yes
4	Mansfield	Inland	Fire Station 107	879 Stafford Rd	120	60	Yes	Yes	Yes	Yes
4	Mansfield	Inland	Goodwin Elementary	321 Hunting Lodge Rd	200	95	Yes	Yes		Yes
4	Mansfield	Inland	Mansfield Middle School	205 Spring Hill Rd	600	300	Yes	Yes		Yes
4	Mansfield	Inland	Vinton Elementary	306 Stafford Rd	200	95	Yes	Yes		Yes
4	Montville	Inland	Chesterfield Fire Dept.	Rte 85	100	40	Yes	Yes	Yes	Yes
4	Montville	Inland	Mohegan Fire Dept.	2029 Norwich New London Tpk	100	40	Yes	Yes	Yes	Yes
4	Montville	Inland	Montville Fire Dept. ¹	77 Rte 163	100	40	Yes	Yes	Yes	Yes
4	Montville	Inland	Montville High School ¹	800 Old Colchester Rd	2,160	1,020	Yes	Yes	Yes	Yes
4	Montville	Inland	Oakdale Fire Dept. ¹	444 Chapel Hill Rd	100	40	Yes	Yes	Yes	Yes
4	Montville	Inland	Tyl Middle School	80 Chesterfield Rd	1,000	500	Yes	Yes	Yes	Yes
4	New London	Inland	New London Armory ¹	249 Bayonet St	320	170	Yes		Yes	
4	North Stonington	Inland	N. S. Elementary School	311 Norwich Westerly Rd	400	200	Yes		Yes	Yes
4	North Stonington	Inland	Wheeler High School	298 Norwich Westerly Rd	600	400	Yes			Yes

1. Shelter facility is common to both the American Red Cross (NSS) inventory and the shelter list provided by the Connecticut Department of Emergency Services and Public Protection, Division of Emergency Management and Homeland Security (CT DESPP DEMHS).



5.0 Shelter Analysis

Table 5-6: Shelter Inventory – CT DESPP DEMHS (continued)

Region	Community	Zone	Shelter Name ¹	Address	Capacity		ARC	Pets	Gener-ator	ADA
					20 SF	40 SF				
4	Norwich	Inland	Bishop Elementary School	56 Main St	700	350	Yes			Yes
4	Norwich	Inland	Huntington School ¹	80 West Town St	500	260	Yes			Yes
4	Norwich	Inland	John B. Stanton School ¹	386 New London Tpke	500	260	Yes			Yes
4	Norwich	Inland	John Moriarty School ¹	20 Lawler Ln	900	400	Yes		Yes	Yes
4	Norwich	Inland	Kelly Jr. High School Reception Ctr ¹	25 Mahan Dr	2,000	600	Yes			Yes
4	Norwich	Inland	Norwich Free Academy GYM ¹	305 Broadway	2,500	989	Yes			Yes
4	Norwich	Inland	Norwich Free Academy Terrell Bldg.	305 Broadway	900	0	Yes			Yes
4	Norwich	Inland	Norwich High School ¹	165 Golden St	500	260	Yes			Yes
4	Norwich	Inland	Norwich Human Services Hospitality Center	80 Broadway	0	0				
4	Norwich	Inland	Rose City Senior Center ¹	8 Mahan Dr	350	60	Yes		Yes	Yes
4	Norwich	Inland	T.N. Mahan Elementary Sch.	94 Salem Tpke	1,000	450	Yes			Yes
4	Norwich	Inland	Teachers Memorial Jr. H.S.	15 Teachers Dr	2,000	1,774	Yes			Yes
4	Norwich	Inland	Uncas Elementary School ¹	280 Elizabeth St Ext	1,000	599	Yes		Yes	Yes
4	Norwich	Inland	Veteran's Memorial School	80 Couch St	1,000	599	Yes			Yes
4	Norwich	Inland	Wequinnoc School ¹	Providence St	500	260	Yes			Yes
4	Plainfield	Inland	Plainfield High School	105 Putnam Rd	0	0				
4	Pomfret	Inland	Pomfret Community School	20 Pomfret St	400	150	Yes		Yes	Yes
4	Putnam	Inland	Putnam Elementary School	33 Wicker Ave	827	827	Yes		Yes	Yes
4	Putnam	Inland	Putnam High School	152 Woodstock Ave	660	660	Yes			Yes
4	Putnam	Inland	Putnam Middle School	35 Wicker Ave	722	651	Yes			Yes

1. Shelter facility is common to both the American Red Cross (NSS) inventory and the shelter list provided by the Connecticut Department of Emergency Services and Public Protection, Division of Emergency Management and Homeland Security (CT DESPP DEMHS).



5.0 Shelter Analysis

Table 5-6: Shelter Inventory – CT DESPP DEMHS (continued)

Region	Community	Zone	Shelter Name ¹	Address	Capacity		ARC	Pets	Gener-ator	ADA
					20 SF	40 SF				
4	Scotland	Inland	Scotland Volunteer Community Hall	47 Brook Rd	185	91	Yes		Yes	
4	Sprague	Inland	St. Joseph's Elementary School	26 Main St	525	480	Yes			
4	Sterling	Inland	Sterling Fire Dept	225 Main St	210	77	Yes		Yes	Yes
4	Sterling	Inland	Sterling Municipal Building	1183 Plainfield Pike	284	106	Yes	Yes	Yes	Yes
4	Stonington	A	Mystic Middle School ¹	204 Mystuxet Rd	500	200	Yes	Yes	Yes	Yes
4	Stonington	Inland	Stonington High School ¹	176 S Broad St	1,200	600	Yes	Yes	Yes	Yes
4	Thompson	Inland	Quinebaug Fire House	720 Quinebaug Rd	290	135			Yes	Yes
4	Thompson	Inland	Quinebaug SDA Church	768 Quinebaug Rd	80	40	Yes			
4	Thompson	Inland	Thompson Town Hall	815 Riverside Dr	124	62	Yes		Yes	
4	Union	Inland	Town Garage	1024 Buckley Hwy	120	120	Yes		Yes	
4	Union	Inland	Union Fire Station	1049 Buckley Hwy	120	60	Yes		Yes	
4	Union	Inland	Union Town Hall	1043 Buckley Hwy	88	44			Yes	
4	Voluntown	Inland	Voluntown Fire Dept.	205 Preston City Rd	100	50	Yes		Yes	Yes
4	Willington	Inland	Hall Memorial School	111 River Rd	298	149	Yes		Yes	Yes
4	Willington	Inland	Willington Fire Department	24 Old Farms Rd	70	30	Yes		Yes	Yes
4	Willington	Inland	Willington Fire Department	24 Old Farms Rd	0	0				
4	Windham	Inland	ECSU - Hurley Hall	Hurley Hall High St	550	0	Yes			Yes
4	Windham	Inland	ECSU - Sports Center	High St Sports Center	1,030	515	Yes			Yes
4	Windham	Inland	ECSU Student Union	High St Student Union	845	329	Yes			Yes
4	Windham	Inland	North Windham Elementary School	112 Jordan Lane N. Rt. 203	527	105	Yes			Yes

1. Shelter facility is common to both the American Red Cross (NSS) inventory and the shelter list provided by the Connecticut Department of Emergency Services and Public Protection, Division of Emergency Management and Homeland Security (CT DESPP DEMHS).



5.0 Shelter Analysis

Table 5-6: Shelter Inventory – CT DESPP DEMHS (continued)

Region	Community	Zone	Shelter Name ¹	Address	Capacity		ARC	Pets	Gener-ator	ADA
					20 SF	40 SF				
4	Windham	Inland	North Windham Firehouse	603 Boston Post Rd	86	86	Yes			
4	Windham	Inland	Sweeney Elem. School	60 Oak Hill Dr	505	105	Yes			Yes
4	Windham	Inland	Windham Center School	45 North Rd, Route 14	399	65	Yes			Yes
4	Windham	Inland	Windham High School	355 High St	1,450	535	Yes		Yes	Yes
4	Windham	Inland	Windham Middle School	123 Quarry St	798	283	Yes			Yes
4	Windham	Inland	Windham Regional No Freeze Hospitality	1110 Main St	0	0				
4	Windham	Inland	Windham Technical School	210 Birch St	1,755	0	Yes		Yes	Yes
4	Woodstock	Inland	Bungay Fire Brigade	1256 Route 171	156	80	Yes			
4	Woodstock	Inland	Muddy Brook Fire House	93 Woodstock Rd	118	60	Yes		Yes	
4	Woodstock	Inland	Woodstock Fire House	399 Route 169	190	95	Yes		Yes	
4	Woodstock	Inland	Woodstock Town Hall	415 Route 169	120	38	Yes		Yes	Yes
5	Barkhamsted	Inland	Barkhamsted East Fire Dept.	54 North Canton Rd	0	0				
5	Barkhamsted	Inland	Barkhamsted Elementary	65 Ripley Hill Rd	0	50			Yes	Yes
5	Beacon Falls	Inland	Fire Department	486 Beacon Falls	0	40			Yes	Yes
5	Beacon Falls	Inland	Laurel Ledge School	30 Highland Ave	0	126	Yes			Yes
5	Beacon Falls	Inland	Woodland Regional High School	135 Back Rimmon Rd	0	313	Yes		Yes	Yes
5	Bethel	Inland	Bethel Middle School ¹	600 Whittlesey Dr	450	200	Yes		Yes	Yes
5	Bethel	Inland	Bethel Municipal Center ¹	1 School St	400	200	Yes	Yes	Yes	Yes
5	Bethel	Inland	Frank A. Berry School ¹	200 Whittlesey Dr	150	75	Yes		Yes	Yes
5	Bethel	Inland	South Street Fire Station ¹	36 South St	100	50	Yes		Yes	Yes

1. Shelter facility is common to both the American Red Cross (NSS) inventory and the shelter list provided by the Connecticut Department of Emergency Services and Public Protection, Division of Emergency Management and Homeland Security (CT DESPP DEMHS).



5.0 Shelter Analysis

Table 5-6: Shelter Inventory – CT DESPP DEMHS (continued)

Region	Community	Zone	Shelter Name ¹	Address	Capacity		ARC	Pets	Gener-ator	ADA
					20 SF	40 SF				
5	Bethel	Inland	Stony Hill Fire House ¹	59 Stony Hill Rd	80	40	Yes		Yes	Yes
5	Bethlehem	Inland	Bethlehem Elementary School	92 East St	0	200			Yes	
5	Bridgewater	Inland	Bridgewater Congregational Church	10 Clapboard Rd	0	50				
5	Bridgewater	Inland	Bridgewater Fire House	110 Main St	20	120	Yes		Yes	
5	Brookfield	Inland	Brookfield High School ¹	45 Longmeadow Hill Rd	20	446			Yes	Yes
5	Brookfield	Inland	Center School ¹	8 Obtuse Hill	0	45	Yes			Yes
5	Brookfield	Inland	Huckleberry Hill School ¹	100 Candlewood Lake Rd	0	50	Yes			Yes
5	Brookfield	Inland	Whisconier ¹	17 W. Whisconier Rd	0	163	Yes			Yes
5	Canaan	Inland	Housatonic Valley Reg.HS	246 Warren Tpke Rd	400	200		Yes		
5	Canaan Falls Village	Inland	Canaan Fire Dept	35 Railroad St	22	11		Yes	Yes	
5	Colebrook	Inland	Colebrook Center FD	31 Bunnel St	28	14			Yes	Yes
5	Colebrook	Inland	Colebrook Consolidated School	452 Smith Hill Rd	200	100			Yes	Yes
5	Colebrook	Inland	Colebrook Forge FD	300 Colebrook River Rd	35	17			Yes	Yes
5	Colebrook	Inland	Community & Senior Center	2 Schoolhouse Rd	95	48			Yes	Yes
5	Cornwall	Inland	Cornwall Consolidated School	5 Cream Hill Rd	36	200			Yes	Yes
5	Cornwall	Inland	West Cornwall Firehouse	289 Goshen Tpke	0	20			Yes	Yes
5	Danbury	Inland	Dorothy Day Hospitality House	11 Spring St	0	0				
5	Danbury	Inland	Jensen Trailer Park Rec Center ¹	1 Kenosia	0	0				
5	Danbury	Inland	War Memorial	1 Memorial Dr	423	211	Yes	Yes	Yes	Yes

1. Shelter facility is common to both the American Red Cross (NSS) inventory and the shelter list provided by the Connecticut Department of Emergency Services and Public Protection, Division of Emergency Management and Homeland Security (CT DESPP DEMHS).



5.0 Shelter Analysis

Table 5-6: Shelter Inventory – CT DESPP DEMHS (continued)

Region	Community	Zone	Shelter Name ¹	Address	Capacity		ARC	Pets	Gener-ator	ADA
					20 SF	40 SF				
5	Goshen	Inland	Goshen Center School	42 North St	400	200			Yes	Yes
5	Hartland	Inland	East Hartland Fire House	34 South Rd	0	50	Yes		Yes	
5	Hartland	Inland	Hartland Elementary School	30 South Rd	0	110	Yes		Yes	
5	Hartland	Inland	Hartland Public Library	61 Center St	0	22	Yes		Yes	
5	Hartland	Inland	West Hartland Fire House	152 Center St	0	45	Yes		Yes	
5	Harwinton	Inland	Harwinton Consolidated School	115 Litchfield Rd	100	50		Yes	Yes	Yes
5	Harwinton	Inland	Harwinton Senior Center Consolidated School	209 Weingart Rd	23	10		Yes	Yes	Yes
5	Kent	Inland	Elderly Nutrition Center	16 Swift Lane	12	12	Yes	Yes		Yes
5	Kent	Inland	Kent School	74 Schaghticoke Rd	1,500	1,500	Yes	Yes	Yes	Yes
5	Kent	Inland	Kent School	74 Schaghticoke Rd	0	0				
5	Kent	Inland	Kent Town Hall	41 Kent Green Blvd	50	50	Yes	Yes	Yes	Yes
5	Kent	Inland	Marvelwood School	476 Skiff Mtn. Rd	300	300	Yes	Yes	Yes	Yes
5	Kent	Inland	South Kent School	40 Bulls Bridge Rd	180	180	Yes	Yes		Yes
5	Litchfield	Inland	Bantam Fire Department	92 Doyle Rd	0	0				
5	Litchfield	Inland	Northfield Fire Department	12 Main St	0	0				
5	Litchfield	Inland	Wisdom House	229 East Litchfield Rd	0	0				
5	Middlebury	Inland	Long Meadow Elementary School	65 Benson Rd	0	0				Yes
5	Middlebury	Inland	Memorial Middle School	73 Kelly Rd	0	516	Yes			Yes
5	Middlebury	Inland	Middlebury Elementary School	286 Whittemore Rd	0	0				Yes
5	Middlebury	Inland	Middlebury Fire HQ	65 Tucker Hill Rd	0	40		Yes	Yes	Yes

1. Shelter facility is common to both the American Red Cross (NSS) inventory and the shelter list provided by the Connecticut Department of Emergency Services and Public Protection, Division of Emergency Management and Homeland Security (CT DESPP DEMHS).



5.0 Shelter Analysis

Table 5-6: Shelter Inventory – CT DESPP DEMHS (continued)

Region	Community	Zone	Shelter Name ¹	Address	Capacity		ARC	Pets	Gener- ator	ADA
					20 SF	40 SF				
5	Middlebury	Inland	Shepardson School	1172 Whittemore Rd	0	60			Yes	Yes
5	Montville	Inland	John Trumbell School	779 Buckingham St	0	500	Yes	Yes	Yes	Yes
5	Montville	Inland	Polk School	437 Buckingham St	0	400	Yes		Yes	Yes
5	Montville	Inland	St Mary Magdalen School	140 Buckingham St	0	100			Yes	Yes
5	Montville	Inland	Swift Middle School	250 Colonial St	0	500	Yes	Yes	Yes	Yes
5	Montville	Inland	Watertown Senior Center	315 Falls Ave	0	75			Yes	Yes
5	Morris	Inland	Morris Fire Department	15 South St	120	60		Yes	Yes	
5	Morris	Inland	Senior Center	109 East St	50	25		Yes	Yes	Yes
5	Naugatuck	Inland	Andrew Ave School	140 Andrew Ave	350	175				
5	Naugatuck	Inland	Central Avenue School	28 Central Ave	176	88	Yes			Yes
5	Naugatuck	Inland	City Hill Middle School	441 City Hill St	348	174				Yes
5	Naugatuck	Inland	Western School	108 Pine St	400	200			Yes	Yes
5	New Fairfield	Inland	New Fairfield High School ¹	54 Gillotti Rd	187	0			Yes	Yes
5	New Fairfield	Inland	New Fairfield Senior Center	33 Route 37	250	125			Yes	Yes
5	New Fairfield	Inland	New Fairfield United Methodist Church ¹	1 Beaver Bogg Rd	300	150				Yes
5	New Milford	Inland	First Congregational Church	36 Main St	0	50				
5	New Milford	Inland	New Milford Shelter Coalition	9 Little Bear Hill Rd	0	0				
5	New Milford	Inland	Richmond Center	40 Main St	0	50				
5	New Milford	Inland	Sarah Noble Intermediate School	25 Sunny Valley Rd	200	1800	Yes			
5	New Milford	Inland	The Maxx	94 Railroad St	50	70	Yes			

1. Shelter facility is common to both the American Red Cross (NSS) inventory and the shelter list provided by the Connecticut Department of Emergency Services and Public Protection, Division of Emergency Management and Homeland Security (CT DESPP DEMHS).



5.0 Shelter Analysis

Table 5-6: Shelter Inventory – CT DESPP DEMHS (continued)

Region	Community	Zone	Shelter Name ¹	Address	Capacity		ARC	Pets	Gener-ator	ADA
					20 SF	40 SF				
5	Newtown	Inland	Newtown High School ¹	12 Berkshire Rd	0	500	Yes		Yes	Yes
5	Newtown	Inland	Newtown Middle School ¹	11 Queen St	40	200	Yes		Yes	Yes
5	Newtown	Inland	Reed Int. School ¹	3 Trades Ln	0	250	Yes		Yes	Yes
5	Norfolk	Inland	Botelle Elementary School	128 Greenwoods Rd	350	125	Yes	Yes	Yes	Yes
5	North Canaan	Inland	N. Canaan Elementary School	90 Pease St	235	117			Yes	Yes
5	Oxford	Inland	Oxford Elderly Housing	100 Stakum Circle	0	15			Yes	Yes
5	Oxford	Inland	Oxford High School ¹	61 Quaker Farms Rd	32	500	Yes		Yes	Yes
5	Oxford	Inland	Oxford Quaker Farms School ¹	30 Great Oak Rd	0	250			Yes	Yes
5	Plymouth	Inland	East Main Street School	22 East Main St	0	0				
5	Plymouth	Inland	Fall Mountain Fire Station	Allentown Rd	80	40			Yes	
5	Plymouth	Inland	Harry S. Fisher School	79 North Main St	0	0				
5	Plymouth	Inland	Plymouth Fire Dept. HQ Terryville	21 Harwinton Ave	86	43			Yes	
5	Plymouth	Inland	Plymouth Center School	41 North St	0	0				
5	Plymouth	Inland	Plymouth Fire Station	691 Main St	60	30			Yes	
5	Plymouth	Inland	Plymouth Town Hall	80 Main St	0	0			Yes	
5	Plymouth	Inland	Terryville High School	33 North Harwinton Ave	0	0				
5	Prospect	Inland	Algonquin School	30 Coer Rd	0	0				
5	Prospect	Inland	Community School	18 Center St	0	0				
5	Prospect	Inland	Long River Middle School	38 Center St	0	446	Yes			
5	Prospect	Inland	Prospect Senior Center	6 Center St	0	0			Yes	

1. Shelter facility is common to both the American Red Cross (NSS) inventory and the shelter list provided by the Connecticut Department of Emergency Services and Public Protection, Division of Emergency Management and Homeland Security (CT DESPP DEMHS).



5.0 Shelter Analysis

Table 5-6: Shelter Inventory – CT DESPP DEMHS (continued)

Region	Community	Zone	Shelter Name ¹	Address	Capacity		ARC	Pets	Gener-ator	ADA
					20 SF	40 SF				
5	Prospect	Inland	Prospect Volunteer Fire Dept ¹	26 New Haven Rd	0	174	Yes		Yes	
5	Redding	Inland	Joel Barlow High School ¹	100 Black Rock Tpke	29	200			Yes	
5	Redding	Inland	John Reed Middle School ¹	486 Redding Rd	0	250	Yes			
5	Redding	Inland	Redding Elementary School ¹	33 Lonetown Rd	0	250	Yes			
5	Ridgefield	Inland	Barlow Mountain Elementary School	115 Barlow Mtn. Rd	94	47	Yes	Yes	Yes	Yes
5	Ridgefield	Inland	East Ridge Middle School ¹	10 E Ridge Rd	0	0				
5	Ridgefield	Inland	Ridgefield Senior Center ¹	100 Danbury Rd	0	0				
5	Ridgefield	Inland	Ridgfield Senior/Recreation Center ¹	195 Danbury Rd	740	370	Yes	Yes	Yes	Yes
5	Ridgefield	Inland	Scotts Ridge Middle School ¹	750 North Salem Rd	400	200	Yes	Yes	Yes	Yes
5	Ridgefield	Inland	Yanity Gym ¹	60 Prospect St	70	35	Yes	Yes	Yes	
5	Roxbury	Inland	Roxbury Congregational Church	24 Church St	50	50	Yes			Yes
5	Roxbury	Inland	Roxbury Fire House	27 North St	100	59	Yes	Yes	Yes	
5	Roxbury	Inland	Roxbury Town Hall	29 North St	200	100	Yes	Yes	Yes	Yes
5	Salisbury	Inland	Hotchkiss School	11 Interlaken Rd	1,000	700	Yes		Yes	Yes
5	Salisbury	Inland	Salisbury Central School	45 Lincoln City Rd	500	200	Yes		Yes	Yes
5	Sharon	Inland	Sharon Fire Department	36 West Main St	110	55		Yes	Yes	Yes
5	Sherman	Inland	Sherman School ¹	2 Route 37 East Sherman Center	100	200		Yes	Yes	Yes
5	Southbury	Inland	Southbury Senior Center ¹	561 Main St South	0	0				
5	Thomaston	Inland	Black Rock Grammer School	57 Branch Rod	0	0				
5	Thomaston	Inland	Thomaston Center School	1 Thomas Ave	0	386				

1. Shelter facility is common to both the American Red Cross (NSS) inventory and the shelter list provided by the Connecticut Department of Emergency Services and Public Protection, Division of Emergency Management and Homeland Security (CT DESPP DEMHS).



5.0 Shelter Analysis

Table 5-6: Shelter Inventory – CT DESPP DEMHS (continued)

Region	Community	Zone	Shelter Name ¹	Address	Capacity		ARC	Pets	Gener- ator	ADA
					20 SF	40 SF				
5	Thomaston	Inland	Thomaston High School	187 Branch Rd	0	550	Yes		Yes	
5	Thomaston	Inland	Thomaston Town Hall	158 Main St	0	0			Yes	
5	Torrington	Inland	Sullivan Senior Center	88 East Albert St	0	0				
5	Torrington	Inland	Torrington Middle School	200 Middle School Dr	4,000	2,000		Yes	Yes	Yes
5	Torrington	Inland	Vogel-Whetmore School	200 Middle School Dr	2,000	1,000			Yes	Yes
5	Warren	Inland	Warren School	21 Sacket Hill Rd	0	600	Yes			Yes
5	Warren	Inland	Warren Town Hall	7 Sacket Hill Rd	0	200	Yes	Yes	Yes	Yes
5	Washington	Inland	Bryan Memorial Town Hall	2 Bryan Plaza	150	100		Yes	Yes	Yes
5	Washington	Inland	Glenholme School	81 Sabbaday Ln	150	100	Yes	Yes	Yes	Yes
5	Washington	Inland	Washington Depot Fire House	109 Bee Brook Pond Rt 47	75	50	Yes	Yes	Yes	Yes
5	Waterbury	Inland	Waterbury Armory	64 Field St	0	0				
5	Watertown	Inland	Judson School	124 Hamilton Ln	0	100	Yes		Yes	Yes
5	Watertown	Inland	St Johns Church	760 Main St	0	100			Yes	Yes
5	Watertown	Inland	Taft School	110 Woodbury Rd	0	1,500			Yes	Yes
5	Watertown	Inland	Watertown Fire Department	935 Main St	0	75			Yes	Yes
5	Watertown	Inland	Watertown High School	324 French St	0	1,055	Yes	Yes	Yes	Yes
5	Wolcott	Inland	Alcott Middle School	1490 Woodtick Rd	0	0				
5	Wolcott	Inland	Frisbie School	24 Todd Rd	0	150	Yes		Yes	Yes
5	Wolcott	Inland	Tyrell Elementary School ¹	500 Todd Rd	0	128	Yes		Yes	Yes
5	Wolcott	Inland	Waklee Elementary	12 Hempel Rd	0	559	Yes		Yes	Yes

1. Shelter facility is common to both the American Red Cross (NSS) inventory and the shelter list provided by the Connecticut Department of Emergency Services and Public Protection, Division of Emergency Management and Homeland Security (CT DESPP DEMHS).



5.0 Shelter Analysis

Table 5-6: Shelter Inventory – CT DESPP DEMHS (continued)

Region	Community	Zone	Shelter Name ¹	Address	Capacity		ARC	Pets	Gener- ator	ADA
					20 SF	40 SF				
5	Wolcott	Inland	Wolcott High School	457 Boundline Rd	0	1,310	Yes			Yes
5	Wolcott	Inland	Wolcott Senior Center	211 Nichols Rd	90	90			Yes	Yes
5	Woodbury	Inland	Emergency Services	25 Quassuk Rd	30	15			Yes	Yes
5	Woodbury	Inland	Mitchell Elementary School	14 School St	1,575	590				Yes
5	Woodbury	Inland	Nonnewaug High School	5 Minortown Rd	1,200	1,125		Yes		
5	Woodbury	Inland	Woodbury Middle School	67 Washington Ave	0	800				

1. Shelter facility is common to both the American Red Cross (NSS) inventory and the shelter list provided by the Connecticut Department of Emergency Services and Public Protection, Division of Emergency Management and Homeland Security (CT DESPP DEMHS).



5.0 Shelter Analysis

Table 5-7: Shelter Capabilities (Demand vs. Capacity) Summary – Fairfield County ^{1,2}

Community	Scenario A Low Occ	Scenario A High Occ	Scenario B Low Occ	Scenario B High Occ
Bridgeport	7,680	7,671	2,091	2,081
Darien	800	797	608	603
Fairfield	154	137	(385)	(404)
Greenwich	2,154	2,151	1,601	1,596
Norwalk	(494)	(515)	(1,302)	(1,330)
Stamford	161	113	(1,446)	(1,505)
Stratford	2,933	2,919	2,198	2,180
Westport	3,637	3,624	3,387	3,371
Totals	17,025	16,897	6,752	6,592

1. Based on ARC National Shelter Survey (NSS) database.
2. Figures in red parentheses indicate communities with public shelter deficits and the amount of the shortfall relative to demand.

Table 5-8: Shelter Capabilities (Demand vs. Capacity) Summary – Middlesex County ^{1,2}

Community	Scenario A Low Occ	Scenario A High Occ	Scenario B Low Occ	Scenario B High Occ
Chester	562	562	517	516
Clinton	1,700	1,667	1,153	1,109
Deep River	64	63	(1)	(4)
Essex	538	535	445	440
Old Saybrook	(403)	(449)	(441)	(488)
Westbrook	1,056	1,024	12	(20)
Totals	3,517	3,402	1,685	1,553

1. Based on ARC National Shelter Survey (NSS) database.
2. Figures in red parentheses indicate communities with public shelter deficits and the amount of the shortfall relative to demand.



5.0 Shelter Analysis

Table 5-9: Shelter Capabilities (Demand vs. Capacity) Summary – New Haven County ^{1,2}

Community	Scenario A Low Occ	Scenario A High Occ	Scenario B Low Occ	Scenario B High Occ
Branford	(701)	(727)	(922)	(953)
East Haven	(540)	(551)	(793)	(803)
Guilford	(325)	(343)	(539)	(559)
Hamden	4,532	4,527	3,943	3,936
Madison	(204)	(245)	(382)	(425)
Milford	3,738	3,707	3,310	3,273
New Haven	(1,387)	(1,409)	(2,854)	(2,882)
North Haven	(216)	(221)	(461)	(467)
West Haven	(886)	(892)	(1,462)	(1,471)
Totals	4,011	3,846	(160)	(351)

1. Based on ARC National Shelter Survey (NSS) database.
2. Figures in red parentheses indicate communities with public shelter deficits and the amount of the shortfall relative to demand.



5.0 Shelter Analysis

Table 5-10: Shelter Capabilities (Demand vs. Capacity) Summary – New London County ^{1,2}

Community	Scenario A Low Occ	Scenario A High Occ	Scenario B Low Occ	Scenario B High Occ
East Lyme	5,380	5,335	5,233	5,184
Groton	3,470	3,433	2,795	2,751
Ledyard	(130)	(133)	(358)	(362)
Lyme	(32)	(35)	(64)	(69)
Montville	1,815	1,810	1,507	1,498
New London	1,901	1,891	1,663	1,651
Old Lyme	598	538	542	480
Preston	485	484	445	443
Stonington	2,839	2,791	2,716	2,665
Waterford	1,349	1,339	933	922
Totals	17,675	17,453	15,412	15,163

1. Based on ARC National Shelter Survey (NSS) database.
2. Figures in red parentheses indicate communities with public shelter deficits and the amount of the shortfall relative to demand.



5.0 Shelter Analysis

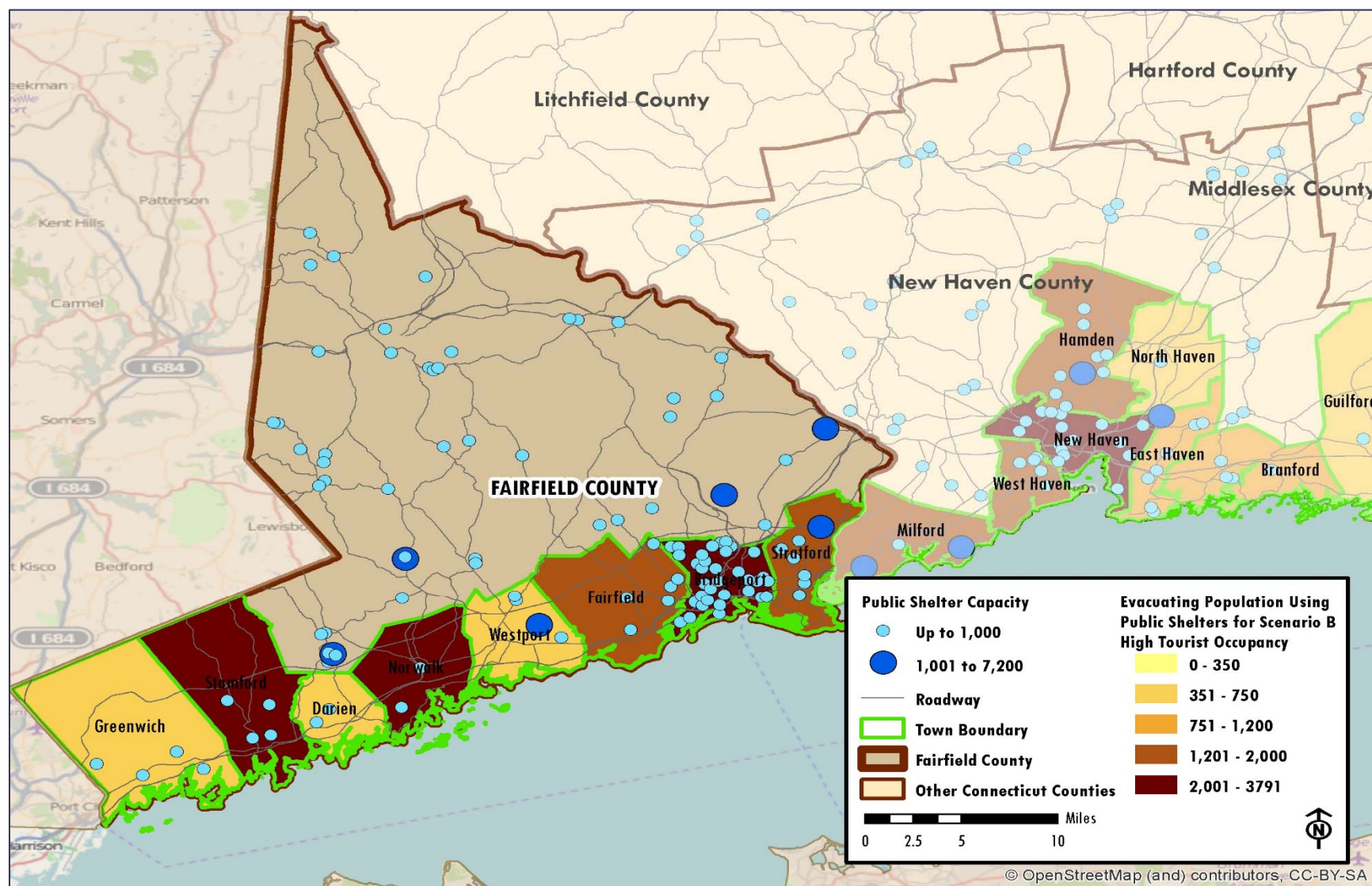


Figure 5-1: Estimated Evacuating Population Using Shelters for Scenario B High Tourist Occupancy – Fairfield County



5.0 Shelter Analysis

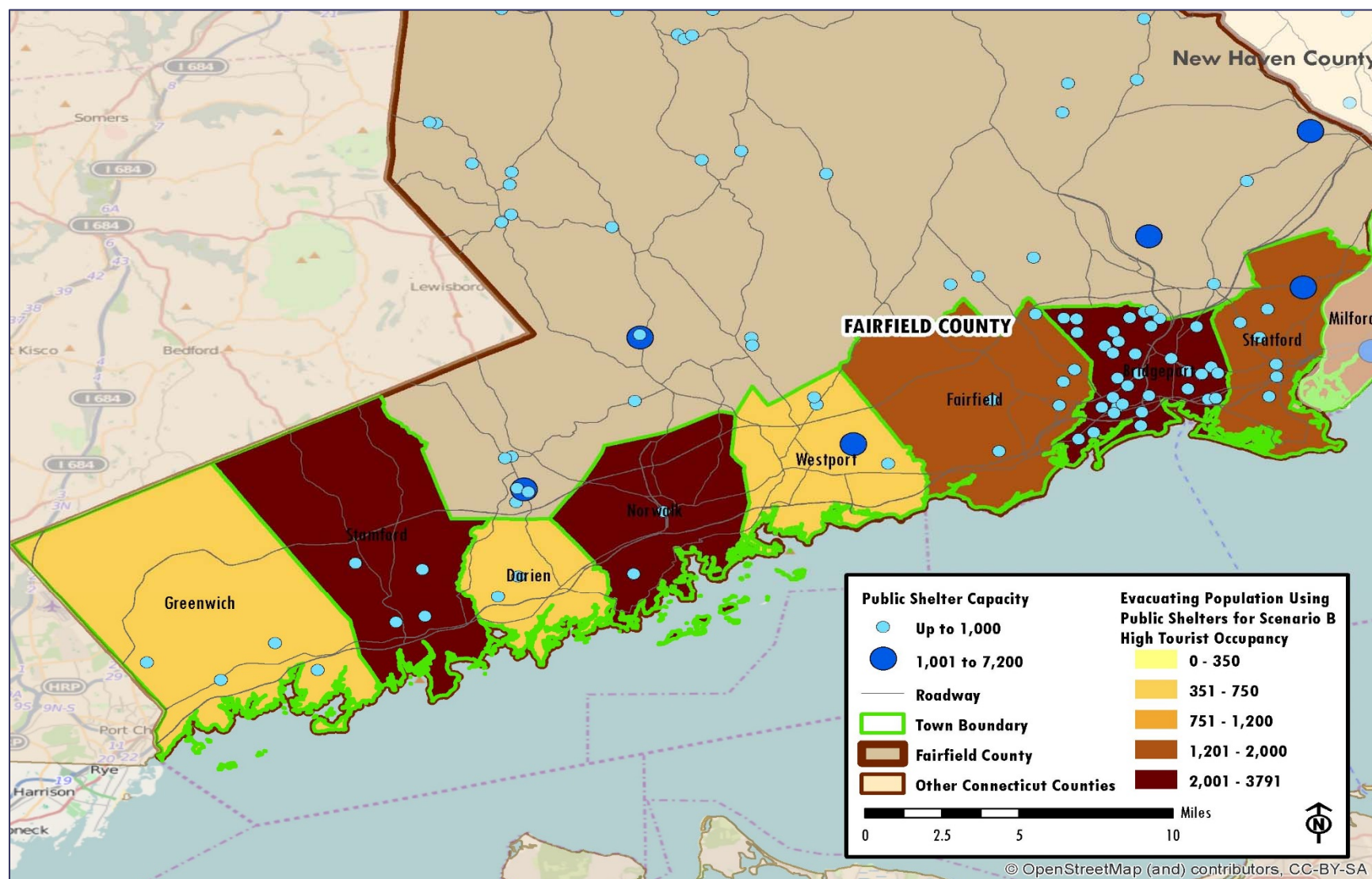


Figure 5-2: Estimated Evacuating Population Using Shelters for Scenario B High Tourist Occupancy – Fairfield County (zoom)



5.0 Shelter Analysis

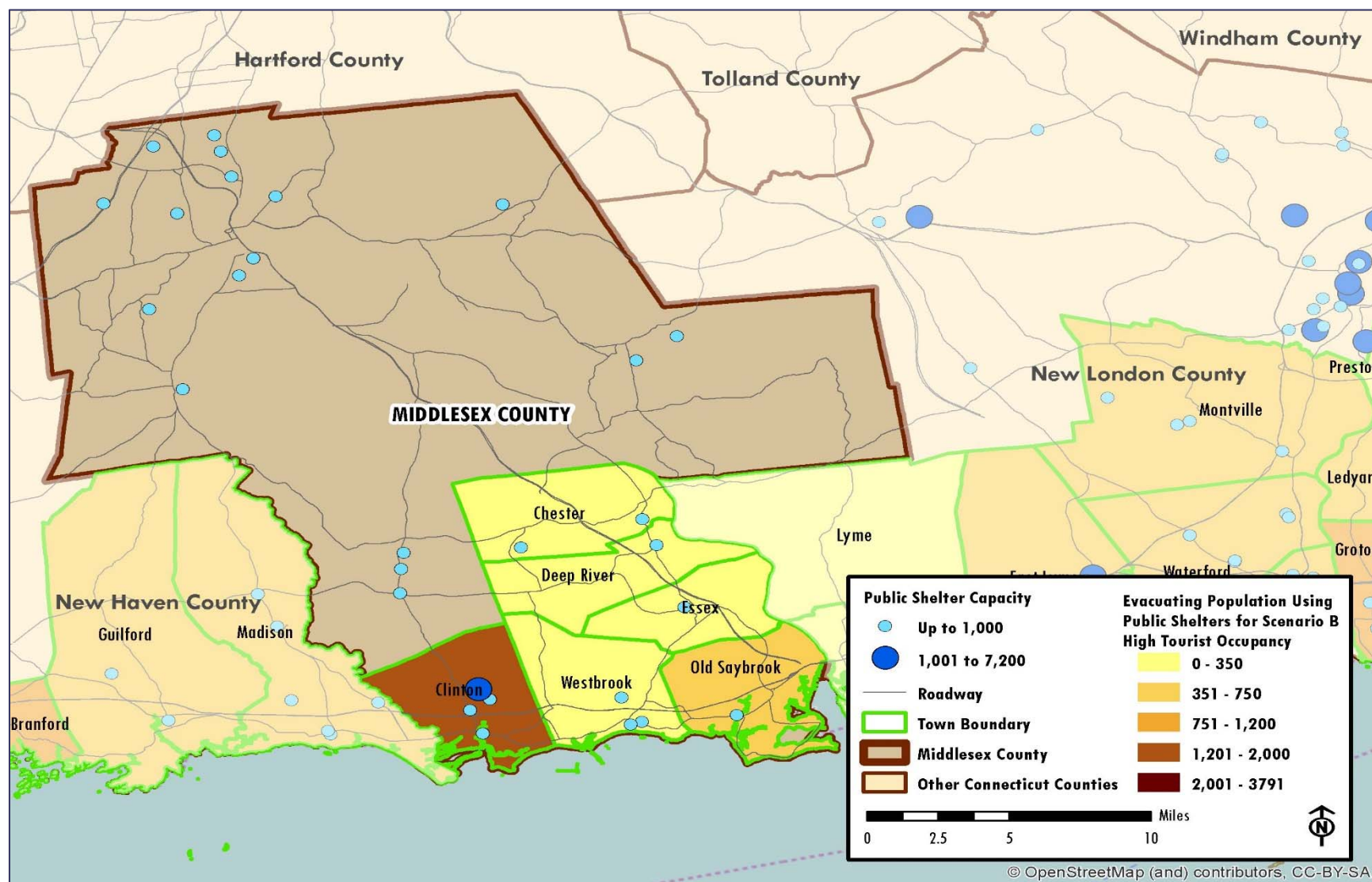


Figure 5-3: Estimated Evacuating Population Using Shelters for Scenario B High Tourist Occupancy – Middlesex County



5.0 Shelter Analysis

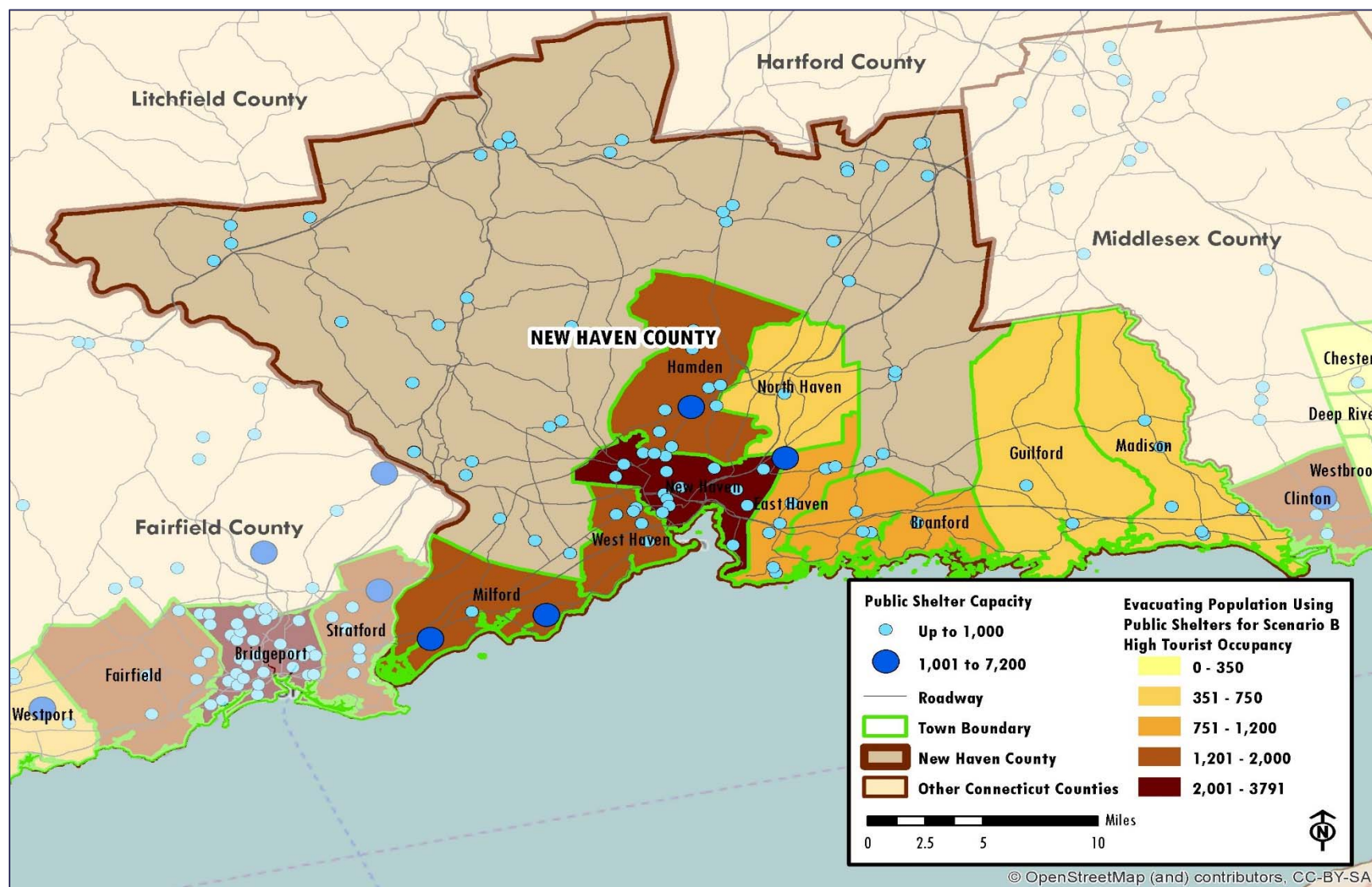


Figure 5-4: Estimated Evacuating Population Using Shelters for Scenario B High Tourist Occupancy – New Haven County



5.0 Shelter Analysis

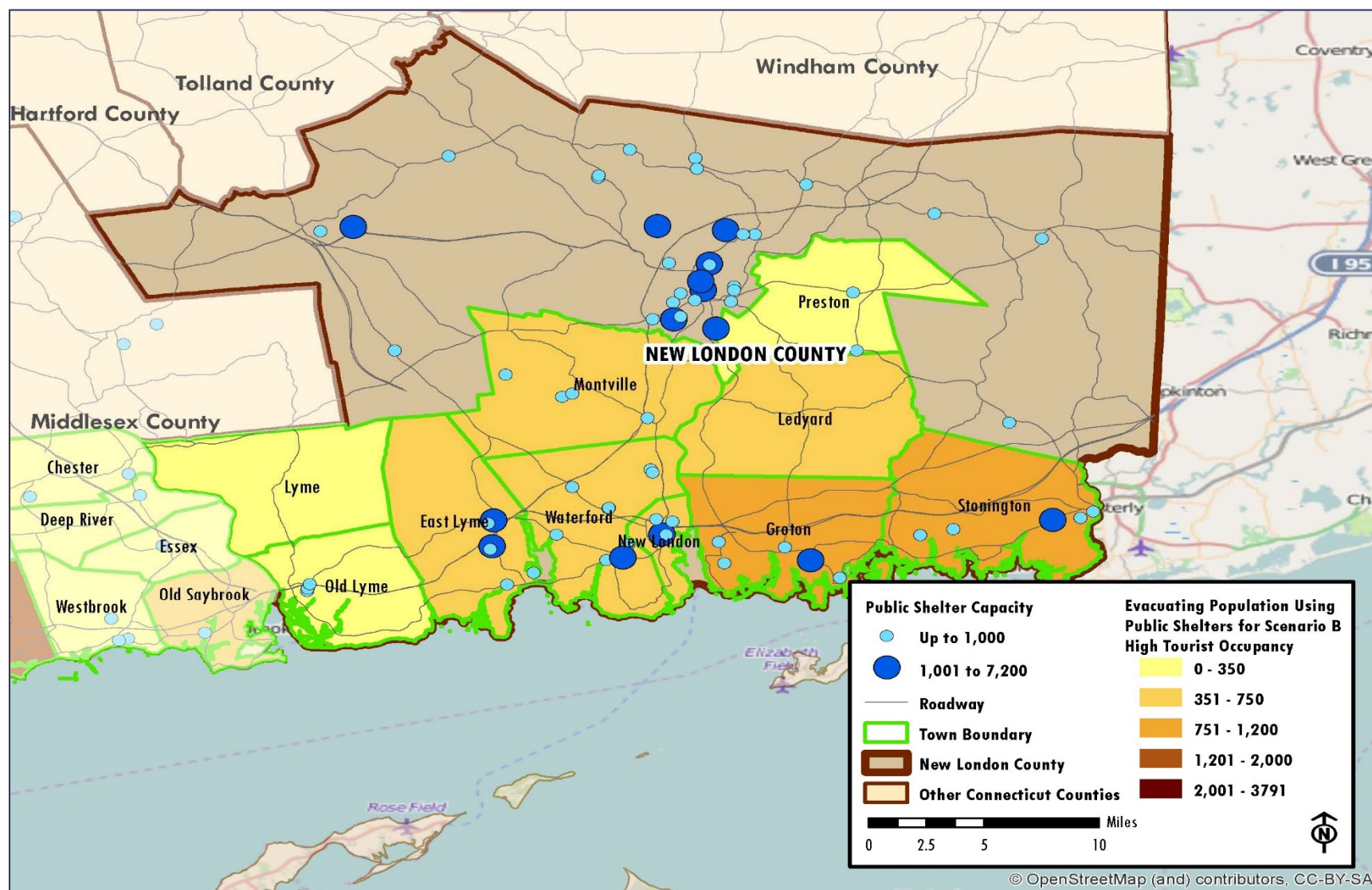


Figure 5-5: Estimated Evacuating Population Using Shelters for Scenario B High Tourist Occupancy – New London County