

---

Sediment Characterization  
New London Disposal Site

---

# Disposal Area Monitoring System Damos

Contribution 39

April 11, 1984



US Army Corps  
of Engineers  
New England Division

SEDIMENT CHARACTERIZATION  
NLON DISPOSAL SITE  
MARCH - APRIL 1984

CONTRIBUTION # 39

April 11, 1984

Contract #  
DACW33-83-D-0004

Work Order 22

Submitted to:

U.S. Army Corps of Engineers  
New England Division  
424 Trapelo Road  
Waltham, MA 02154

Submitted by:

Gary D. Paquette  
Science Applications, Inc.  
Ocean Science & Technology Division  
One Washington Street  
Newport, RI 02840  
(401) 847-4210



## 1.0 INTRODUCTION

On 27 March 1984, Science Applications, Inc. (SAI) conducted a sampling cruise to the Eastern Long Island Sound (ELIS) disposal area, located approximately 3 nautical miles south of the Thames River in New London, Connecticut. The purpose of this cruise was to obtain sediment core samples over the disposal mound at the New London 1983 (NLON83) disposal site. Figure 1.0-1 depicts the depth contour chart generated from a bathymetric survey conducted on 28 December 1983. This shows quite clearly a well defined mound of dredge material approximately 23 feet high, extending to within 30 feet of the surface and located at approximately  $41^{\circ}16.48'N$  by  $72^{\circ}04.56'W$ . The object of this study was to obtain a total of 25 core samples down to a depth of at least 45 feet mean low water in order to characterize the nature of the sediment present. Navigation during this study was provided by the SAI precision navigation and data acquisition system, utilizing a Del Norte Model 540 Trisponder microwave ranging system enabling positioning with an accuracy of 6 feet. Core samples were taken using a 15 foot, hydraulically powered vibracorer leased from Ocean Surveys Inc. of Old Saybrook, CT. All at-sea operations were done from the R/V UCONN, a 65 foot steel hulled vessel under charter from the University of Connecticut.

In order to characterize the nature of the material within the mound, a grid of 25 sampling stations was set up which covered the center of the pile as well as its flanks out to the 45 foot depth contour level. Positional stability was maintained through the use of either a one, two or three point mooring

system, depending on existing ocean current conditions. Figure 1.0-2 is a depth contour chart similar to that presented in Figure 1.0-1, but with the actual sample locations superimposed. Each of these samples were taken within 35 feet of their target positions and most (80%) were 15 feet or less from their targets. Table 1.0-1 lists the geographic locations of each core sample as well as their individual lengths. Each core sample was carefully removed from the corer, labelled and capped, stored in an upright position to minimize mixing, and transported to the SAI offices in Newport, RI.

On 29 March, a storm system of significant intensity passed close to the New London disposal site and necessitated the postponement of field operations until the week of 2 April. This storm also caused considerable damage to the lantern on the SAI maintained disposal buoy "DGC". Therefore, the lantern and battery system were replaced on 3 April.

## 2.0 RESULTS

Following completion of at-sea operations, each core sample was cut into 5 foot lengths and cut longitudinally. Each sample was then split and visual observations were taken. Cores from stations 4, 16, 17 and 18 were not cut and were set aside for viewing by Corps personnel. Each set of observations was then corrected for settling effects and diagrammed.

In general, the mound appears to consist of well consolidated layers of silt, sand and clay. While not distributed uniformly over the mound, evidence of stone and gravel were noted in several of the samples taken during this

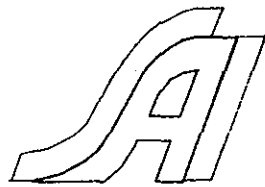
NLON83

28 DEC 1983

CONTOUR INT: .5m

CHART SCALE: 1/4000

DATUM: MLW



0 80 160

SCALE (m)

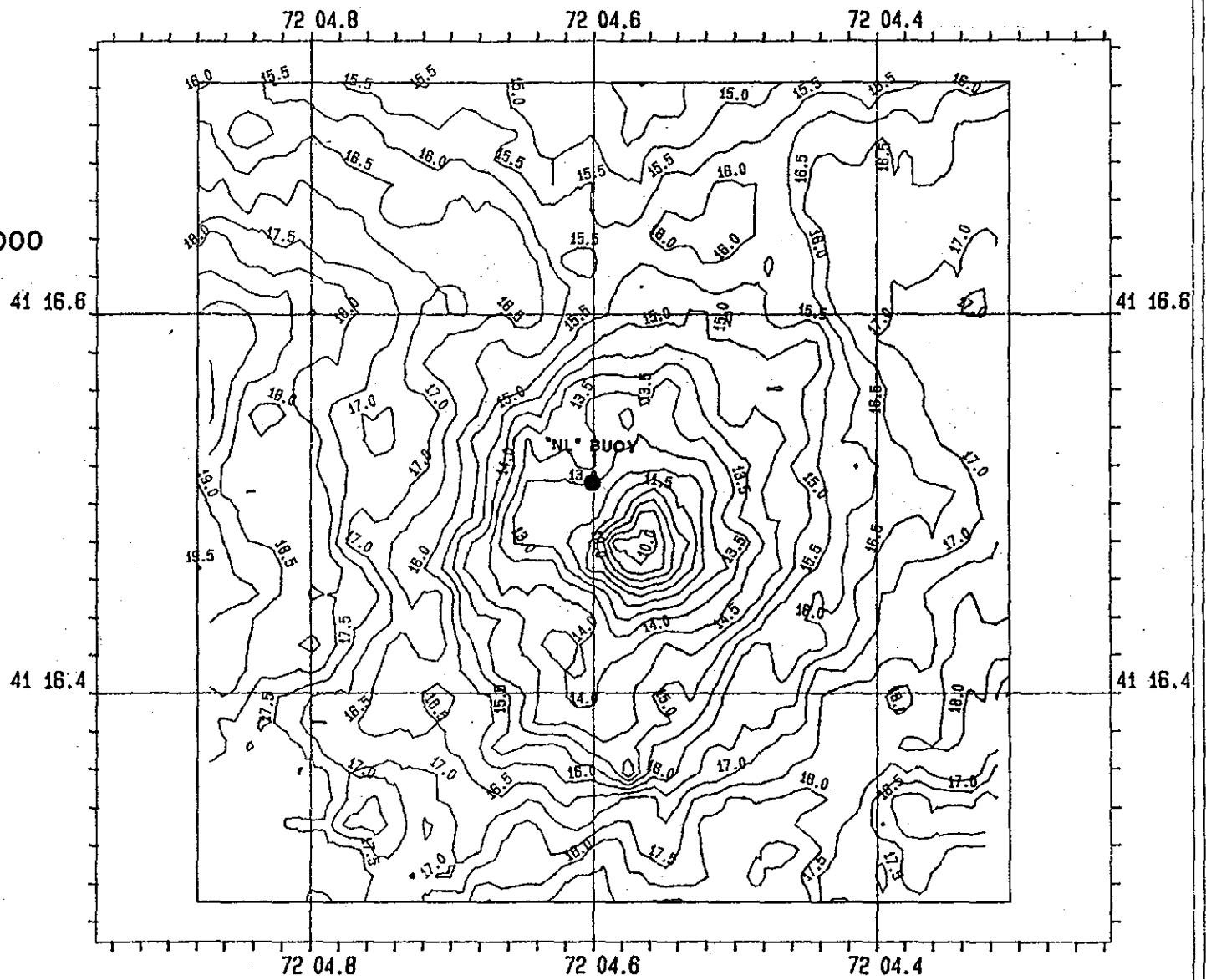


Fig. 1.0-1

VIBRA-CORE STATIONS  
NEW LONDON DISPOSAL SITE

MARCH/APRIL 1984

1 INCH = 100 FEET

CONTOUR INTERVAL: 0.5 M

DATUM: MLW

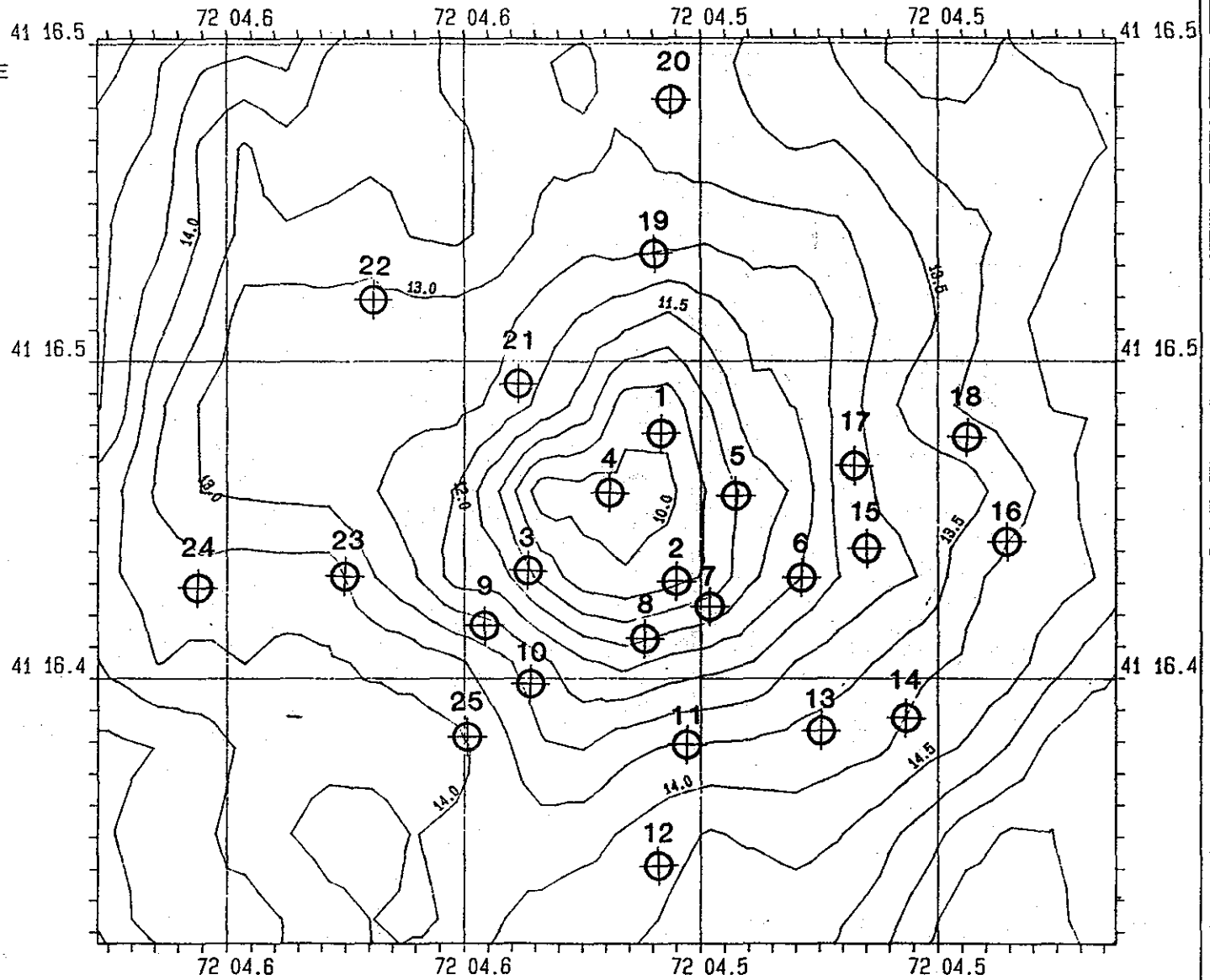


Fig. 1.0-2

TABLE 1.0-1

STATION	CORE #	NORTH LATITUDE	WEST LONGITUDE	LENGTH (INCHES)
1	1	41.1648874	72.0455835	156
2	2	41.1646496	72.0455480	108
3	3	41.1646769	72.0458702	156
4	20	41.1647956	72.0456982	168
5	4	41.1647954	72.0454332	180
6	10	41.1646710	72.0452758	180
7	15	41.1646171	72.0454836	168
8	14	41.1645632	72.0456197	144
9	19	41.1645851	72.0459634	156
10	13	41.1644878	72.0458633	132
11	7	41.1643957	72.0455268	180
12	16	41.1642013	72.0455916	168
13	8	41.1644225	72.0452403	168
14	9	41.1644331	72.0450757	156
15	11	41.1647141	72.0451397	180
16	25	41.1647139	72.0448532	156
17	5	41.1648384	72.0451753	84
18	6	41.1648868	72.0449389	162
19	22	41.1651737	72.0456045	150
20	17	41.1654168	72.0455612	168
21	18	41.1649632	72.0458913	144
22	21	41.1650985	72.0461919	108
23	24	41.1646664	72.0462497	156
24	23	41.1646450	72.0465648	108
25	12	41.1644122	72.0459994	180



study and some of the stones measured 2-2 1/2 inches in size. It is not known whether larger stones are present as the vibrating nature of the corer tends to push larger objects aside rather than being stopped. As can be seen in the following diagrams, some of the samples were quite complex. In most cases, however, each individual layer of material was quite thin, on the order of 2-3 inches, which is indicative of disposal from many small projects. Evidence of the cohesive nature of this material is given by the fact that four steel corer barrels were bent beyond repair during this project.

Detailed diagrams of each core sample as well as a summarized listing are presented in the following pages.



## LIST OF PROBINGS

NUMBER	DEPTH OF WATER	DEPTH OF PROBE	ELEVATION BELOW M.L.W.	PENETRATION	MATERIAL
NL1	32.1	45.1	13.0		FLUFF, SILTY CLAY, CLAY
NL2	33.5	42.5	9.0		CLAY, SILT, STONES, SAND, CLAY
NL3	37.9	50.9	13.0		SAND, SANDY CLAY, CLAY
NL4	34.5	48.5	14.0		NOT OPENED
NL5	36.6	51.6	15.0		SILT, SANDY SILT, CLAYEY SILT
NL6	39.0	54.0	15.0		SILTY SAND, SILT, CLAY
NL7	37.6	51.6	14.0		SILTY SAND, CLAY, SILT, CLAY
NL8	38.5	50.5	12.0		SILTY SAND & STONES, CLAY, SAND, CLAY
NL9	41.4	54.4	13.0		SAND, MUD, SILT, CLAY
NL10	42.3	53.3	11.0		SAND & GRAVEL, SILT, CLAY, SILT, CLAY
NL11	44.8	59.8	15.0		SAND, SILT, CLAY, SILT, CLAY, SILT, CLAY
NL12	47.3	61.3	14.0		SAND & GRAVEL, SILT, CLAY
NL13	45.1	59.1	14.0		SAND & GRAVEL, CLAY, SILT, CLAY
NL14	45.9	58.9	13.0		SAND & STONES, SILT, SAND, CLAY, SILT
NL15	42.2	57.2	15.0		SILT & GRAVEL, CLAY, SILT, CLAY, SILT, CLAY
NL16	46.1	59.1	13.0		NOT OPENED
NL17	41.5	48.5	7.0		NOT OPENED
NL18	44.6	58.1	13.5		NOT OPENED
NL19	40.0	52.5	12.5		SAND, SILT, CLAY
NL20	43.5	57.5	14.0		SAND, CLAY, SAND, CLAY
NL21	41.0	53.0	12.0		SAND, CLAY, GRAVEL, SILT CLAY
NL22	42.2	51.2	9.0		SILT, CLAY, MUD, SILT, CLAY
NL23	45.0	58.0	13.0		SAND, SILT, CLAY
NL24	44.1	53.1	9.0		SAND, SILT, CLAY
NL25	46.1	61.1	15.0		SAND & GRAVEL, SILT, CLAY

# SEDIMENT CORE DESCRIPTION

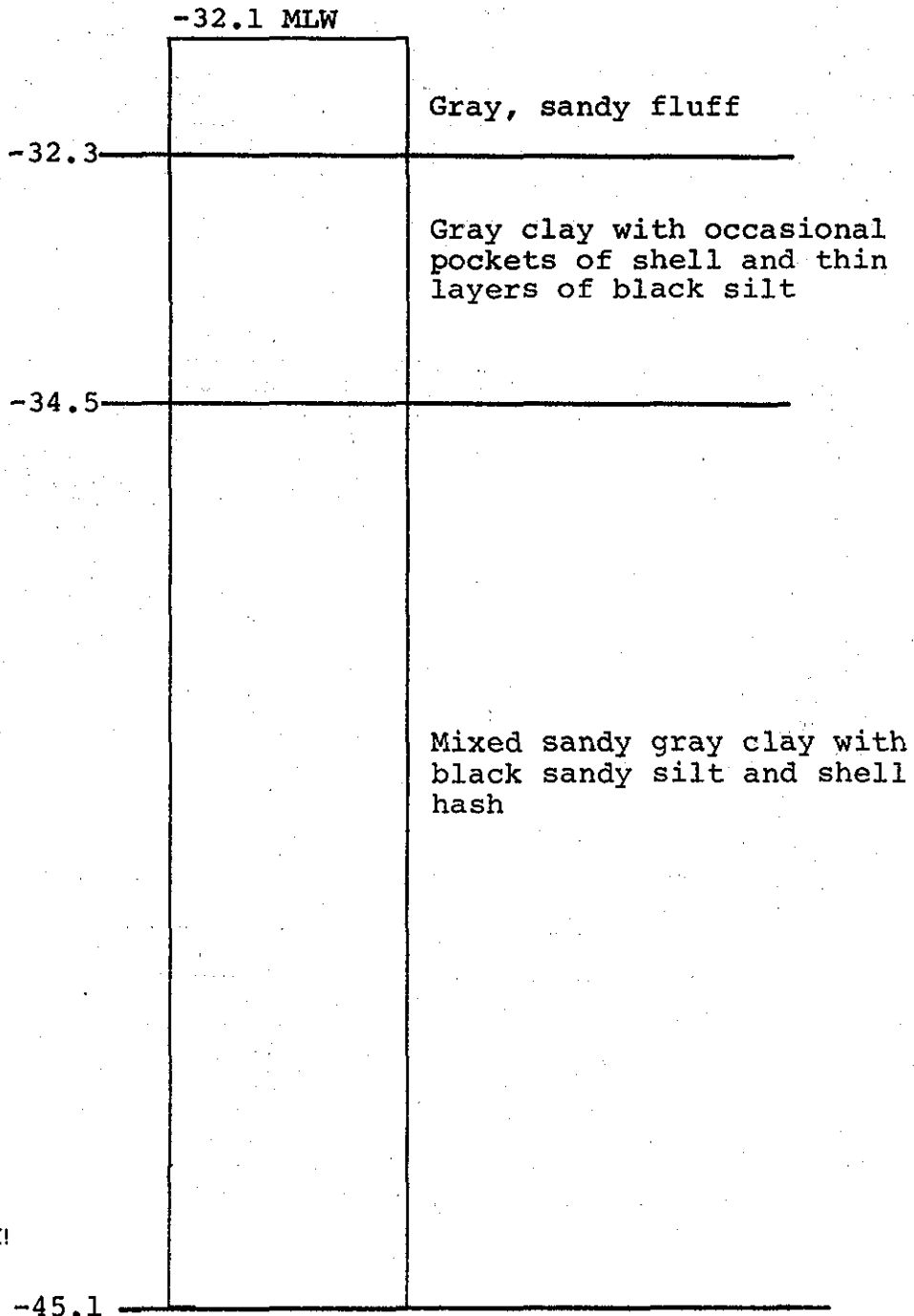
SITE: NEW LONDON STATION: NL1 TYPE: VIBRATOR

DATE SAMPLED: 4/2/84 DATE EXAMINED: 4/10/84

CORE LENGTH: 15' SAMPLE LENGTH: 13.0

INDEX

DESCRIPTION



NOT TO SCALE!

CORE #: 1 DIAMETER: 2 7/8" MEASUREMENTS IN: FEET

# SEDIMENT CORE DESCRIPTION

SITE: NEW LONDON STATION: NL2 TYPE: VIBRATOR

DATE SAMPLED: 4/2/84 DATE EXAMINED: 4/10/8-

CORE LENGTH: 15' SAMPLE LENGTH: 9.0

<u>INDEX</u>	<u>DESCRIPTION</u>
	-33.5 MLW
-34.8	Dry gray clay
-35.1	Black oily silt
-37.1	Gray sandy clay with 2-3 cm stones
-37.5	Gray silty sand
-40.6	Dry brown silt & gray clay with some shell material
-41.2	Gray clay
-41.6	Oily black silt
-42.5	Dry brown sandy silt

NOT TO SCALE!

CORE #: 2 DIAMETER: 2 7/8" MEASUREMENTS IN: FEET

# SEDIMENT CORE DESCRIPTION

SITE: NEW LONDON STATION: NL3 TYPE: VIBRATOR

DATE SAMPLED: 4/2/84 DATE EXAMINED: 4/10/84

CORE LENGTH: 15' SAMPLE LENGTH: 13.0

<u>INDEX</u>	<u>DESCRIPTION</u>
-37.9 MLW	
-38.2	Sandy gravel with shell hash
-39.6	Gray clay with pockets of shells
-43.5	Gray sandy clay with pockets of black silt
	Gray clay
-47.9	
	Gray clay with pockets of black oily silt
-50.9	

NOT TO SCALE!

CORE #: 3 DIAMETER: 2 7/8" MEASUREMENTS IN: FEET

# SEDIMENT CORE DESCRIPTION

SITE: NEW LONDON STATION: NL5 TYPE: VIBRATOR

DATE SAMPLED: 4/2/84 DATE EXAMINED: 4/6/84

CORE LENGTH: 15' SAMPLE LENGTH: 15

<u>INDEX</u>	<u>DESCRIPTION</u>
	-36.6 MLW
-37.7	Gray sandy silt
-38.0	Black silt with shell hash
-38.6	Gray clayey silt
-38.9	Black organic silt
-39.7	Brown clay
-46.6	Marbled brown clay with black oily silt & shell hash
-42.2	Gray clayey silt with wood chips
-44.8	Gray clayey silt
-45.8	Brown sandy clay
-46.4	Gray clay
-46.6	Sandy gray clay
-47.3	Gray clay
-49.8	Black clayey silt
-51.6	Black silty clay with shell & stones

NOT TO SCALE!

CORE #: 4 DIAMETER: 2 7/8" MEASUREMENTS IN: FEET

# SEDIMENT CORE DESCRIPTION

SITE: NEW LONDON STATION: NL6 TYPE: VIBRATOR

DATE SAMPLED: 4/2/84 DATE EXAMINED: 4/6/84

CORE LENGTH: 15' SAMPLE LENGTH: 15'

<u>INDEX</u>	<u>DESCRIPTION</u>
	-39.0 MLW
-39.7	Gray cohesive silt
-39.8	Black silty sand
-40.1	Gray cohesive silt
-40.2	Black silty sand with stones
-40.5	Gray silty sand with wood chips
-41.2	Gray cohesive silt
-41.8	Black organic silt with shell hash
-44.0	Gray cohesive silt
-44.3	Black silt
-44.9	Black silt
-49.1	Dry cohesive gray silt
	Dry cohesive clayey gray silt
-52.6	Black silty sand
-52.9	
	Dry, cohesive clayey gray silt
-54.0	

NOT TO SCALE!

CORE #: 10 DIAMETER: 2 7/8" MEASUREMENTS IN: FEET

# SEDIMENT CORE DESCRIPTION

SITE: NEW LONDON STATION: NL7 TYPE: VIBRATOR

DATE SAMPLED: 4/2/84 DATE EXAMINED: 4/10/84

CORE LENGTH: 15' SAMPLE LENGTH: 14.0

<u>INDEX</u>	<u>DESCRIPTION</u>
-37.6 MLW	
-38.2	Gray silty sand with stones
-39.4	Gray sandy clay with shell hash
-41.5	Gray clay with shell hash
-42.0	Gray clay
-42.3	Black oily silt
-42.8	Gray silty sand
-44.3	Gray sandy clay
-44.8	Black oily silt
-46.5	Gray clay with shells & wood chips
-51.6	Gray clay with occasional stones & shells

NOT TO SCALE!

CORE #: 15 DIAMETER: 2 7/8" MEASUREMENTS IN: FEET

# SEDIMENT CORE DESCRIPTION

SITE: NEW LONDON STATION: NL8 TYPE: VIBRATOR

DATE SAMPLED: 4/2/84 DATE EXAMINED: 4/9/84

CORE LENGTH: 15' SAMPLE LENGTH: 12.0

<u>INDEX</u>	<u>DESCRIPTION</u>
-38.5 MLW	Gray silty sand with clay lumps, 3-4cm stones & shell hash
-39.9	Gray clay
-42.8	Brown sandy clay
-44.7	Gray sandy clay
-45.0	Mixed gray clay & black silt
-45.7	Black silt
-45.9	Black silty clay
-46.5	Sandy gray clay
-47.1	Gray clay
-48.9	Sand & shell hash
-49.0	Gray clay
-50.5	

NOT TO SCALE!

CORE #: 14 DIAMETER: 2 7/8" MEASUREMENTS IN: FEET



# SEDIMENT CORE DESCRIPTION

SITE: NEW LONDON STATION: NL9 TYPE: VIBRATOR

DATE SAMPLED: 4/3/84 DATE EXAMINED: 4/6/84

CORE LENGTH: 15' SAMPLE LENGTH: 13.0

<u>INDEX</u>	<u>DESCRIPTION</u>
-41.4 MLW	
-42.8	Watery medium sand with 2-5cm stones & shell
-44.0	Coarse sand
-44.9	Gray, dry, silty co- hesive mud
-47.1	Black sandy cohesive silt with wood chips
-49.1	Dry gray cohesive mud
-53.2	Dry gray cohesive clay with occasional shells
-54.1	Black coarse silty sand
-54.4	Gray clay

NOT TO SCALE!

CORE #: 19 DIAMETER: 2 7/8" MEASUREMENTS IN: FEET

# SEDIMENT CORE DESCRIPTION

SITE: NEW LONDON STATION: NL10 TYPE: VIBRATOR

DATE SAMPLED: 4/2/84 DATE EXAMINED: 4/9/84

CORE LENGTH: 15' SAMPLE LENGTH: 11.0

<u>INDEX</u>	<u>DESCRIPTION</u>
-42.3 MLW	
-42.8	Silty coarse sand & pebbles
-43.9	Dark gray clay
-44.5	Gray clayey silt with coarse sand & large amounts of shell hash
-46.1	Brown cohesive silt with pockets of black silt
-50.1	Gray clay
-50.2	Black silt
-52.1	Mostly gray clay with pockets of black silt & shells
-53.3	Brown clayey silt

NOT TO SCALE!

CORE #: 13 DIAMETER: 2 7/8" MEASUREMENTS IN: FEET

# SEDIMENT CORE DESCRIPTION

SITE: NEW LONDON STATION: NL11 TYPE: VIBRATOR

DATE SAMPLED: 4/2/84 DATE EXAMINED: 4/6/84

CORE LENGTH: 15' SAMPLE LENGTH: 15'

<u>INDEX</u>	<u>DESCRIPTION</u>
	-44.8 MLW
-45.5	Coarse sand
	Sandy gray clay
-46.3	
	Black sandy organic silt
-47.6	
	Slightly cohesive gray dry silt
-50.5	
	Dry gray slightly cohesive mud with occasional shell
-56.3	
	Black watery organic silt
-57.0	
	Dry gray slightly cohesive mud
-57.7	
	Dark gray dry mud with some shell
-58.7	
	Coarse sand with 2-3cm stones
-58.8	
	Dark gray dry mud with shell hash
-59.8	

NOT TO SCALE!

CORE #: 7 DIAMETER: 2 7/8" MEASUREMENTS IN: FEET

# SEDIMENT CORE DESCRIPTION

SITE: NEW LONDON STATION: NL12 TYPE: VIBRATOR

DATE SAMPLED: 4/3/84 DATE EXAMINED: 4/9/84

CORE LENGTH: 15' SAMPLE LENGTH: 14.0

## INDEX

## DESCRIPTION

	-47.3 MLW	
-49.0		Coarse sand with pebbles & 3-4cm stones
		Brown clayey silt
-49.8		
		Brown silty sand
-54.4		
		Black organic silt with large shell fragments
-55.2		
		Dry clayey silt with shell fragments
-60.4		
		Brownish dry mud
-61.4		
		Black sandy silt with 2-3cm stones & shell
-62.2		
		Dry clayey silt
-61.3		

NOT TO SCALE!

CORE #: 16 DIAMETER: 2 7/8" MEASUREMENTS IN: FEET

# SEDIMENT CORE DESCRIPTION

SITE: NEW LONDON STATION: NL13 TYPE: VIBRATOR

DATE SAMPLED: 4/2/84 DATE EXAMINED: 4/9/84

CORE LENGTH: 15' SAMPLE LENGTH: 14.0

<u>INDEX</u>	<u>DESCRIPTION</u>
-45.1 MLW	
-45.8	Silty sand with shell & stones
-48.5	Marbled gray clay with brown & black silt & shell fragments
-51.3	Gray clay with wood chips
-52.0	Marbled gray clay & black silt
-52.5	Gray clay with wood chips
-53.0	Mixed gray clay & black silt
-54.1	Gray clay
-56.8	Gray clay with pockets of black silt & wood chips
-57.3	Watery gray clayey silt & stones
-59.1	Gray clay with pockets of black & brown silt & sand

NOT TO SCALE!

CORE #: 8 DIAMETER: 2 7/8" MEASUREMENTS IN: FEET

# SEDIMENT CORE DESCRIPTION

SITE: NEW LONDON STATION: NL14 TYPE: VIBRATOR

DATE SAMPLED: 4/2/84 DATE EXAMINED: 4/9/84

CORE LENGTH: 15' SAMPLE LENGTH: 13.0

<u>INDEX</u>	<u>DESCRIPTION</u>
-45.9 MLW	
-46.3	Watery silty sand with 4-5cm clay balls and 2-3cm stones
-51.1	Dry gray clayey silt some shells & 1-2cm stones
-51.6	Brwon water & silt with pebbles & shell
-54.1	Dry cohesive clayey silt
-54.4	Gray silty sand & gravel
-55.2	gray clayey silt
-57.7	Brownish gray clayey silt with shell & wood chips
-58.3	Black coarse silty sand with 3-4cm stones
-58.9	Gray dry clayey silt

NOT TO SCALE!

CORE #: 9 DIAMETER: 2 7/8" MEASUREMENTS IN: FEET

# SEDIMENT CORE DESCRIPTION

---

SITE: NEW LONDON STATION: NL15 TYPE: VIBRATOR

DATE SAMPLED: 4/2/84 DATE EXAMINED: 4/9/84

CORE LENGTH: 15' SAMPLE LENGTH: 15.0

<u>INDEX</u>	<u>DESCRIPTION</u>
-42.2 MLW	
-42.7	Watery gray silt with gravel & shell
-53.1	Gray clay with sparse pockets of brown & black silt with some shell
-53.3	Oily black silt & stones
-54.1	Gray clay with black silt
-56.3	Gray clay
-56.4	Black silt
-57.2	Brown clayey mud

NOT TO SCALE!

CORE #: 11 DIAMETER: 2 7/8" MEASUREMENTS IN: FEET

# SEDIMENT CORE DESCRIPTION

SITE: NEW LONDON STATION: NL19 TYPE: VIBRATOR

DATE SAMPLED: 4/3/84 DATE EXAMINED: 4/10/84

CORE LENGTH: 15' SAMPLE LENGTH: 12.5

<u>INDEX</u>	<u>DESCRIPTION</u>
	-40.0 MLW
-40.2	Coarse sand
-40.7	Black sandy silt
-43.5	Gray clay with occasional pockets of black silt
-48.2	Gray clay with pockets of black silt & shell material
-48.4	Gray clay
-52.5	Marbled gray clay with brown sandy silt & black oily silt

NOT TO SCALE!

CORE #: 22 DIAMETER: 2 7/8" MEASUREMENTS IN: FEET



# SEDIMENT CORE DESCRIPTION

SITE: NEW LONDON STATION: NL20 TYPE: VIBRATOR

DATE SAMPLED: 4/3/84 DATE EXAMINED: 4/10/84

CORE LENGTH: 15' SAMPLE LENGTH: 14.0

INDEX

DESCRIPTION

<u>INDEX</u>	<u>DESCRIPTION</u>
	-43.5 MLW
-43.8	Silty sand
-44.1	Gray clay
-44.2	Silty sand
-46.1	Gray clay
-46.4	Clayey gray sand
-48.7	Gray clay
-49.1	Mixed black silt & gray clay with shell hash
-51.7	Mixed black & brown dry sandy silt
-52.1	Gray clay
-52.5	Gray sandy clay
-53.0	Black sandy silt
-55.4	Black sandy clay
-55.9	Gray clay
-57.5	Gray clay with pockets of black silt

NOT TO SCALE!

CORE #: 17 DIAMETER: 2 7/8" MEASUREMENTS IN: FEET

# SEDIMENT CORE DESCRIPTION

SITE: NEW LONDON STATION: NL21 TYPE: VIBRATOR

DATE SAMPLED: 4/3/84 DATE EXAMINED: 4/10/84

CORE LENGTH: 15' SAMPLE LENGTH: 12.0

<u>INDEX</u>	<u>DESCRIPTION</u>
	-41.0 MLW
-41.3	Gray silty sand with shell hash
-41.8	Gray clay
-42.2	Brown sand & gravel
-42.7	Gray clay
-43.1	Black oily silt & 3-4cm stones
-43.8	Brown clay
-46.8	Gray clay
-47.4	Dry sandy gray silt & wood chips
-49.6	Brown silt with oily black silt
-53.0	Dry gray clay with pockets of shell hash

NOT TO SCALE!

CORE #: 18 DIAMETER: 2 7/8" MEASUREMENTS IN: FEET

# SEDIMENT CORE DESCRIPTION

SITE: NEW LONDON STATION: NL22 TYPE: VIBRATOR

DATE SAMPLED: 4/3/84 DATE EXAMINED: 4/10/84

CORE LENGTH: 15' SAMPLE LENGTH: 9.0

<u>INDEX</u>	<u>DESCRIPTION</u>
	-42.2 MLW
-43.4	Loose watery gray silt
-44.0	Large deposit of shell
-45.1	Gray clay
-45.6	Watery brown mud
-46.6	Watery black silt & pebbles
-49.9	Gray clay
-50.0	Dry black silt
-51.2	Gray clay

NOT TO SCALE!

CORE #: 21 DIAMETER: 2 7/8" MEASUREMENTS IN: FEET

# SEDIMENT CORE DESCRIPTION

SITE: NEW LONDON STATION: NL23 TYPE: VIBRATOR

DATE SAMPLED: 4/3/84 DATE EXAMINED: 4/10/84

CORE LENGTH: 15' SAMPLE LENGTH: 13.0

<u>INDEX</u>	<u>DESCRIPTION</u>
-45.1	-45.0 MLW Gray silty sand
-47.2	Gray clay with occasional 1-2cm stones
-47.7	Gray silty sand & wood chips
-48.0	Dry black oily silt
-48.3	Brown sandy silt
-48.5	Watery oily black silt with 3-4cm stones
-49.1	Sandy dry brown clay
-51.1	Gray clay
-52.5	Gray clay with pockets of black silt
-54.2	Dry brown clay with shell hash
-58.0	Gray clay

NOT TO SCALE!

CORE #: 24 DIAMETER: 2 7/8" MEASUREMENTS IN: FEET

# SEDIMENT CORE DESCRIPTION

SITE: NEW LONDON STATION: NL24 TYPE: VIBRATOR

DATE SAMPLED: 4/3/84 DATE EXAMINED: 4/10/84

CORE LENGTH: 15' SAMPLE LENGTH: 9.0

<u>INDEX</u>	<u>DESCRIPTION</u>
	-44.1 MLW
-44.8	Black silty sand with 3-4cm stones
-45.4	Black sandy silt
-46.6	Gray sandy clay
-46.8	Brown clay
-47.0	Black silt
-47.4	Gray clay
	Gray clay with thin layers of brown clay & black silt
-53.1	

NOT TO SCALE!

CORE #: 23 DIAMETER: 2 7/8" MEASUREMENTS IN: FEET

# SEDIMENT CORE DESCRIPTION

SITE: NEW LONDON STATION: NL25 TYPE: VIBRATOR

DATE SAMPLED: 4/2/84 DATE EXAMINED: 4/9/84

CORE LENGTH: 15' SAMPLE LENGTH: 15.0

<u>INDEX</u>	<u>DESCRIPTION</u>
	-46.1 MLW
-47.0	Watery black sandy silt with gravel
-48.7	Marbled gray clay with black oily silt
-49.6	Gray sandy silt
-51.2	Marbled gray clay with black silt, shell & gravel
-53.0	Brown clayey silt with black silt & wood chips
-54.8	Brown clayey silt
-56.3	Gray clay
-57.9	Marbled brown silt with black silt
-59.0	Gray clay
-61.1	Marbled brown silt & black silt with shell hash

NOT TO SCALE!

CORE #: 12 7283 036 DIAMETER: 2 7/8" MEASUREMENTS IN: FEET