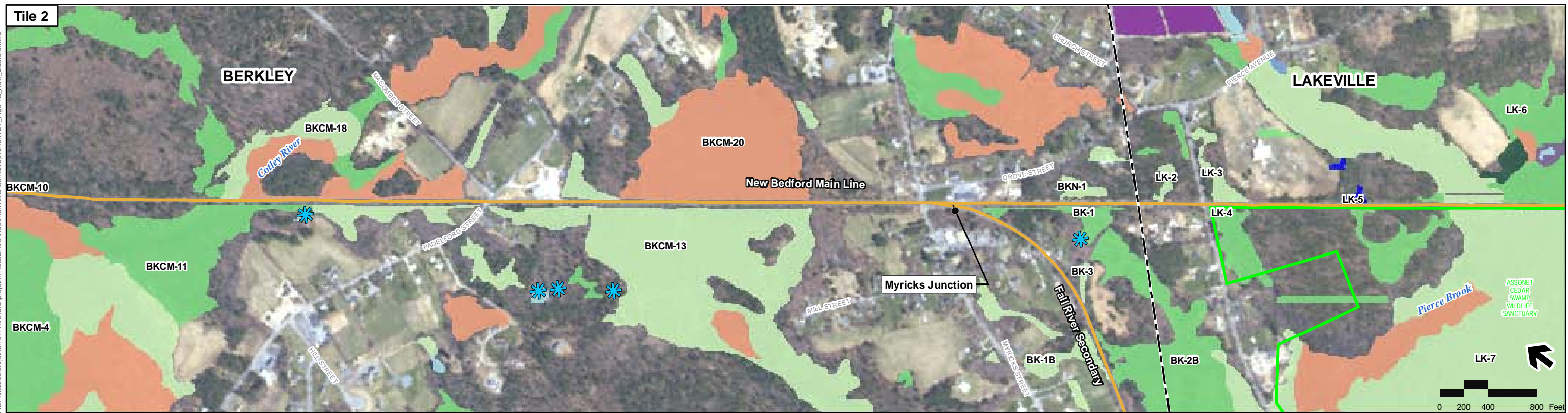


Appendix 4.16-A

GIS Modified Wetland Maps



Printing Date: 3/11/2009
 File: \\mbos\projects\10111_00\GIS\project\Phase2\TechReports\Wetlands\RailOptions\WET_Fig3-1a_New_Bedford.mxd

- Legend**
- MBTA Commuter Rail Station
 - Proposed Stations
 - MBTA Commuter Rail
 - Town Boundaries
 - ✱ NHESP Certified Vernal Pools
 - ✱ NHESP Potential Vernal Pools
 - ✱ SCR Identified Vernal Pools (Field Verified)
 - Note: NHESP Potential Vernal Pools: NOT equivalent to Certified Vernal Pools
 - Proposed Alternative
 - ▭ Protected Open Space
- Wetlands**
- Open Water
 - Bog
 - Cranberry Bog
 - Other
 - Deep Marsh
 - Salt Marsh
 - Shallow Marsh Meadow or Fen
 - Shrub Swamp
 - Wooded Swamp Coniferous
 - Wooded Swamp Deciduous
 - Wooded Swamp Mixed Trees

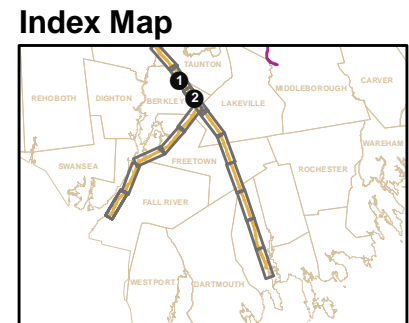


Figure 3-1a
Wetlands
New Bedford Main Line

Source: MassGIS, VHB
 Prepared by: VHB



Printing Date: 1/14/2009
 File: \\hwy\proj\Boston\10111_00\GIS\project\Phase2\TechReports\AIR\all\NewBedford_Page2.mxd

- Legend**
- MBTA Commuter Rail Station
 - Proposed Stations
 - MBTA Commuter Rail
 - Town Boundaries
 - Proposed Alternative
 - Protected Open Space

- ✨ NHESP Certified Vernal Pools
 ✨ NHESP Potential Vernal Pools
 ✨ SCR Identified Vernal Pools (Field Verified)

Note: NHESP Potential Vernal Pools: NOT equivalent to Certified Vernal Pools

- Wetlands**
- Open Water
 - Bog
 - Cranberry Bog
 - Other
 - Deep Marsh
 - Salt Marsh
 - Shallow Marsh Meadow or Fen
 - Shrub Swamp
 - Wooded Swamp Coniferous
 - Wooded Swamp Deciduous
 - Wooded Swamp Mixed Trees

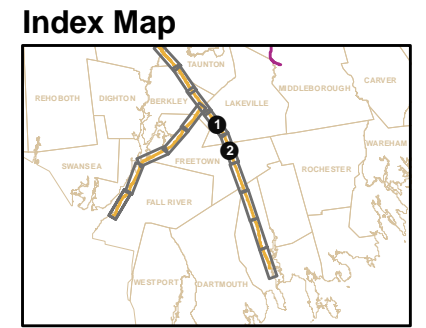
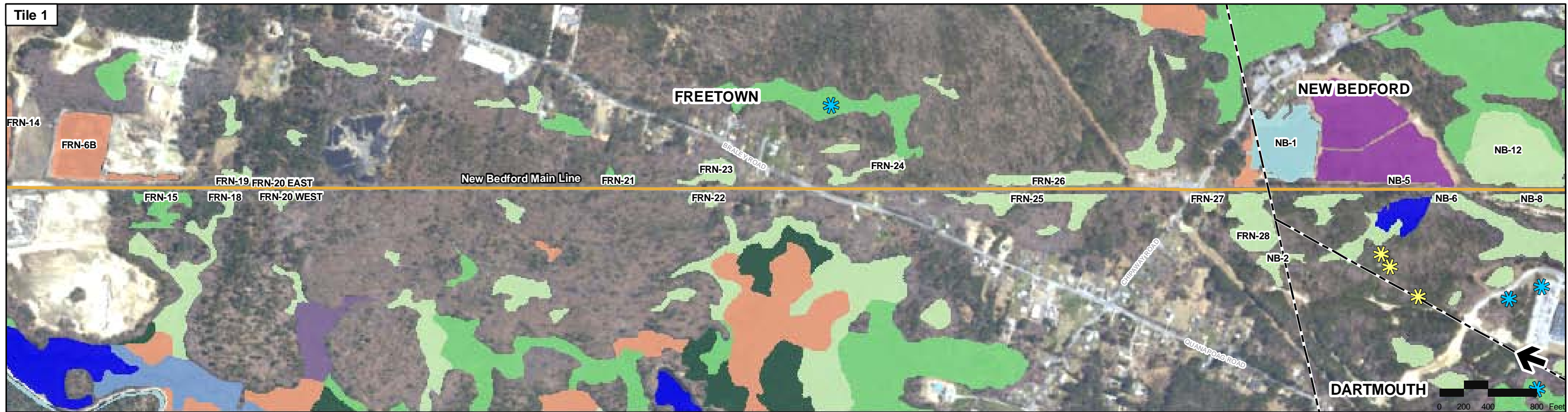


Figure 3-1b
Wetlands
New Bedford Main Line

Source: MassGIS, VHB
 Prepared by: VHB



Printing Date: 3/11/2009
 File: \\mabos\projects\101111_00\GIS\Project\Phase2\1b.ch\Reports\Wetlands\Rail\Options\SWET_Fig3-1c-New_Bedford.mxd

- Legend**
- MBTA Commuter Rail Station
 - Proposed Stations
 - ✱ NHESP Certified Vernal Pools
 - ✱ NHESP Potential Vernal Pools
 - ✱ SCR Identified Vernal Pools (Field Verified)
 - Town Boundaries
 - Proposed Alternative
 - Protected Open Space
- Wetlands**
- Open Water
 - Bog
 - Cranberry Bog
 - Other
 - Deep Marsh
 - Salt Marsh
 - Shallow Marsh Meadow or Fen
 - Shrub Swamp
 - Wooded Swamp Coniferous
 - Wooded Swamp Deciduous
 - Wooded Swamp Mixed Trees
- Note: NHESP Potential Vernal Pools: NOT equivalent to Certified Vernal Pools

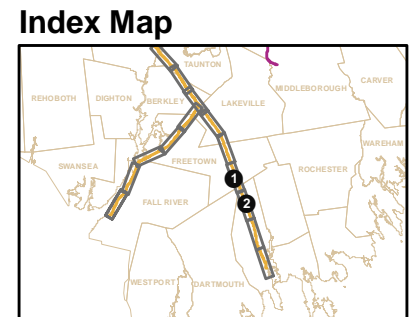


Figure 3-1c
Wetlands
New Bedford Main Line

Source: MassGIS, VHB
 Prepared by: VHB



- Legend**
- MBTA Commuter Rail Station
 - Proposed Stations
 - MBTA Commuter Rail
 - Town Boundaries
 - ✿ NHESP Certified Vernal Pools
 - ✿ NHESP Potential Vernal Pools
 - ✿ SCR Identified Vernal Pools (Field Verified)
 - Note: NHESP Potential Vernal Pools: NOT equivalent to Certified Vernal Pools
- Wetlands**
- Open Water
 - Bog
 - Cranberry Bog
 - Other
 - Deep Marsh
 - Salt Marsh
 - Shallow Marsh Meadow or Fen
 - Shrub Swamp
 - Wooded Swamp Coniferous
 - Wooded Swamp Deciduous
 - Wooded Swamp Mixed Trees

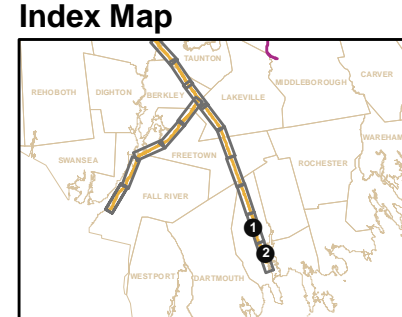


Figure 3-1d
Wetlands
New Bedford Main Line

Source: MassGIS, VHB
 Prepared by: VHB

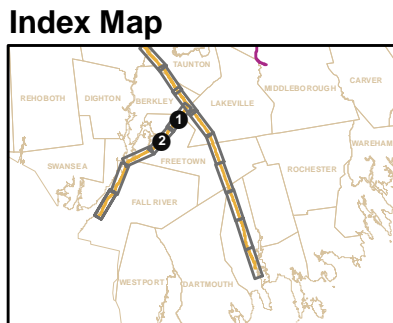


Legend

- MBTA Commuter Rail Station
- Proposed Stations
- MBTA Commuter Rail
- - Town Boundaries
- NHESP Certified Vernal Pools
- ✱ NHESP Potential Vernal Pools
- ✱ SCR Identified Vernal Pools (Field Verified)
- Note: NHESP Potential Vernal Pools: NOT equivalent to Certified Vernal Pools

Wetlands

- Open Water
- Bog
- Cranberry Bog
- Other
- Deep Marsh
- Salt Marsh
- Shallow Marsh Meadow or Fen
- Shrub Swamp
- Wooded Swamp Coniferous
- Wooded Swamp Deciduous
- Wooded Swamp Mixed Trees



EOT **SCR** **SOUTH COAST RAIL**

Figure 3-2a

Wetlands

Fall River Secondary

Source: MassGIS, VHB
Prepared by: VHB



Printing Date: 3/11/2009
 File: \\mabos\projects\10111.00\GIS\project\Phase2\TechReports\Wetlands\RailOptions\WET_Fig3-2b_Fall_River.mxd

- Legend**
- MBTA Commuter Rail Station
 - Layover Facility
 - ✱ NHESP Certified Vernal Pools
 - ✱ NHESP Potential Vernal Pools
 - ✱ SCR Identified Vernal Pools (Field Verified)
 - MBTA Commuter Rail
 - Proposed Alternative
 - Town Boundaries
 - Protected Open Space
- Note: NHESP Potential Vernal Pools: NOT equivalent to Certified Vernal Pools
- Wetlands**
- Open Water
 - Bog
 - Cranberry Bog
 - Other
 - Deep Marsh
 - Salt Marsh
 - Shallow Marsh Meadow or Fen
 - Shrub Swamp
 - Wooded Swamp Coniferous
 - Wooded Swamp Deciduous
 - Wooded Swamp Mixed Trees

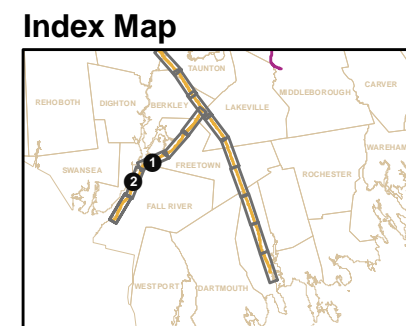


Figure 3-2b
Wetlands
Fall River Secondary

Source: MassGIS, VHB
 Prepared by: VHB



Printing Date: 1/09/2009
 File: \\mbos\projects\10111_00\GIS\project\Phase2\TechReports\Wetlands\AE_Hybrid\RailOptions\WET_Fig3-2c_Fall_River.mxd

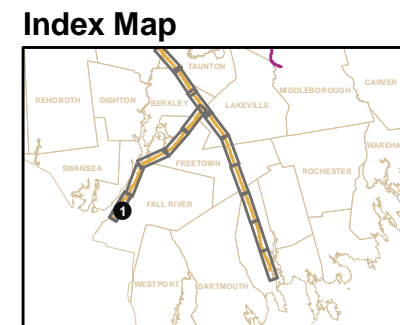
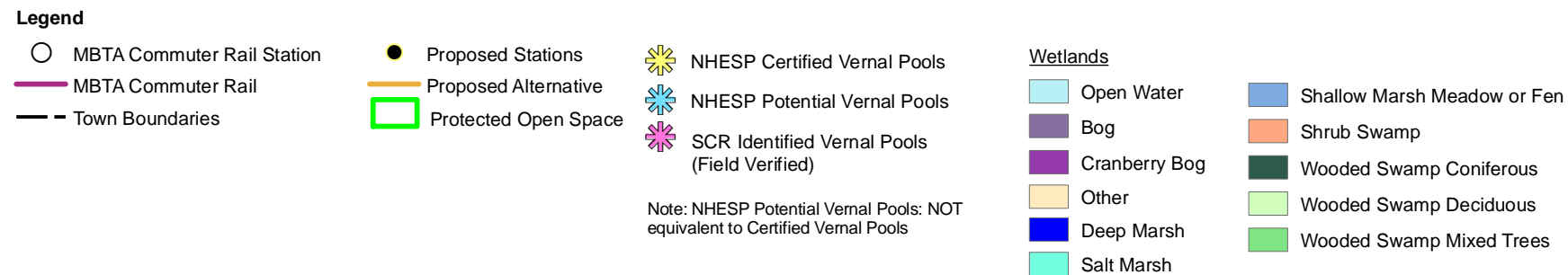
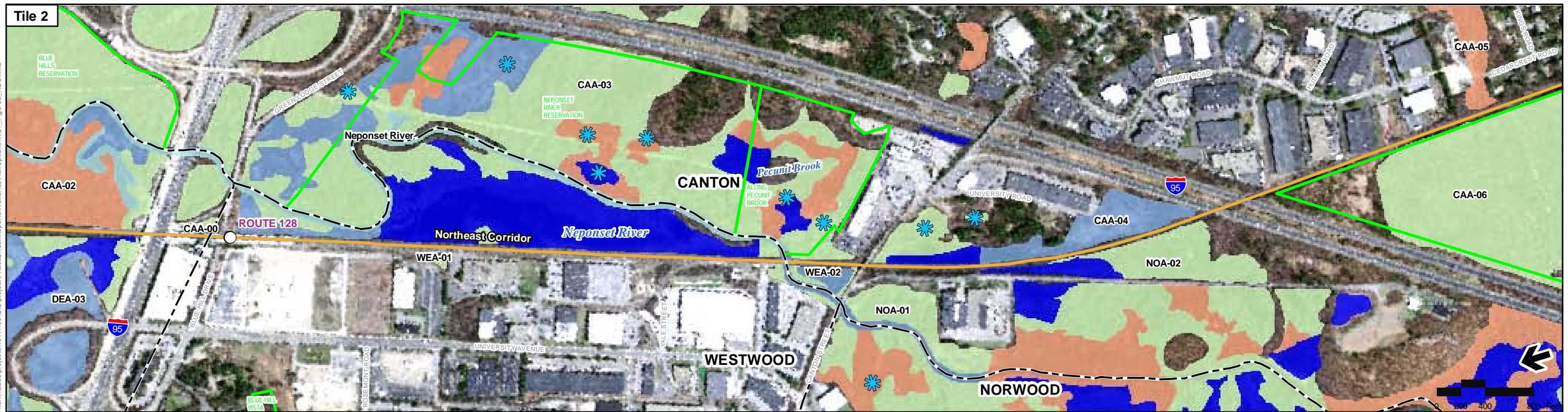
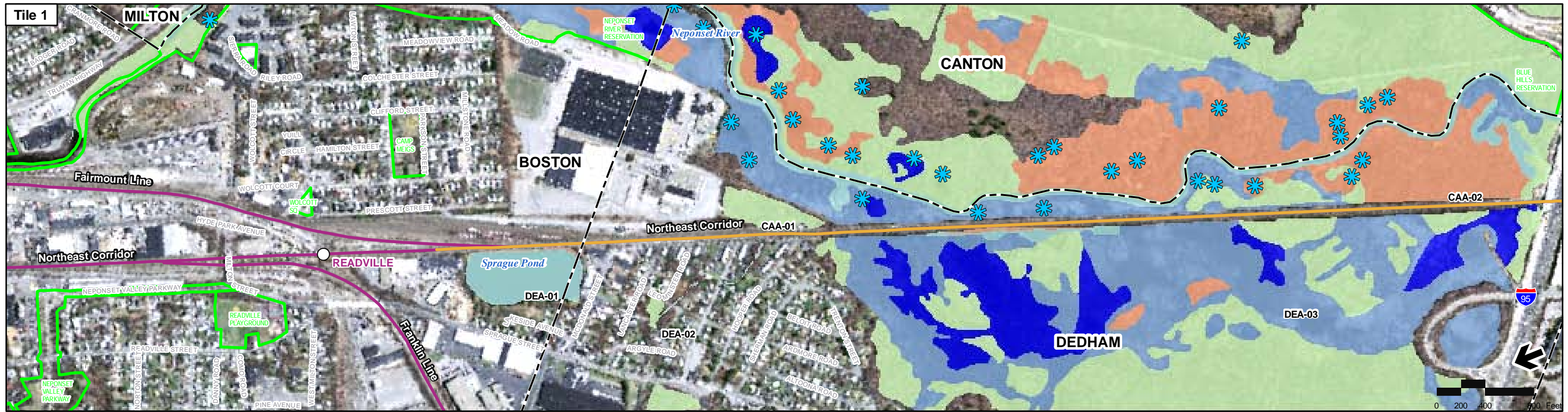


Figure 3-2c
Wetlands
Fall River Secondary

Source: MassGIS, VHB
 Prepared by: VHB



Printing Date: 3/17/2009
 File: \\mba\projects\10111_000\GIS\project\Phase2\Tech\Reports\Wetlands\RailOptions\WET_Fig3-3a_NEC.mxd

Legend

| | | | |
|----------------------------|----------------------|--|-----------------------------|
| MBTA Commuter Rail Station | Proposed Stations | NHESP Certified Vernal Pools | Wetlands |
| MBTA Commuter Rail | Proposed Alternative | NHESP Potential Vernal Pools | Open Water |
| Town Boundaries | Protected Open Space | SCR Identified Vernal Pools (Field Verified) | Shallow Marsh Meadow or Fen |
| | | Note: NHESP Potential Vernal Pools: NOT equivalent to Certified Vernal Pools | Shrub Swamp |
| | | | Wooded Swamp Coniferous |
| | | | Wooded Swamp Deciduous |
| | | | Wooded Swamp Mixed Trees |
| | | | Cranberry Bog |
| | | | Other |
| | | | Deep Marsh |
| | | | Salt Marsh |

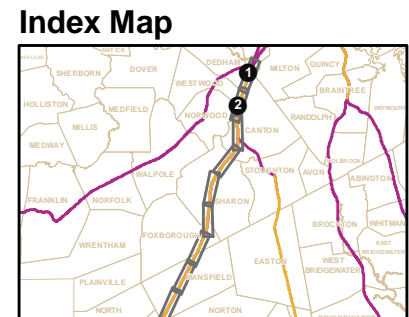
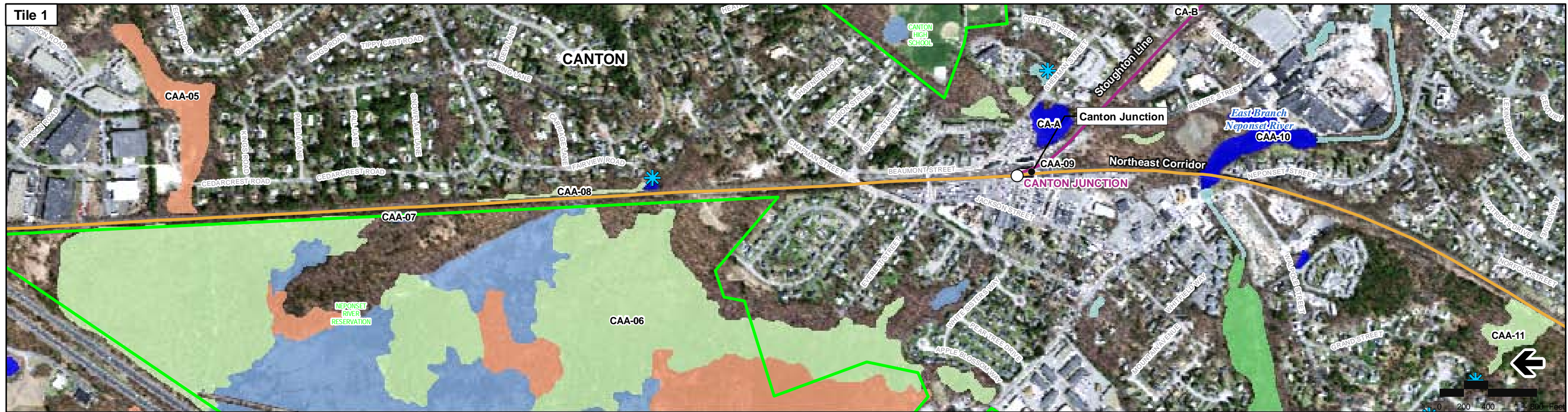


Figure 3-3a
Attleboro Alternative
Northeast Corridor
Wetlands

Source: MassGIS, VHB
 Prepared by: VHB



Printing Date: 3/17/2009
 File: \\mbta\projects\10111_00\GIS\project\Phase2\TechReports\Wetlands\RailOptions\SWET_Fig3-3b_NEC.mxd

Legend

- MBTA Commuter Rail Station
- Proposed Stations
- MBTA Commuter Rail
- Town Boundaries
- NHESP Certified Vernal Pools
- NHESP Potential Vernal Pools
- SCR Identified Vernal Pools (Field Verified)
- Protected Open Space

- Note: NHESP Potential Vernal Pools: NOT equivalent to Certified Vernal Pools

Wetlands

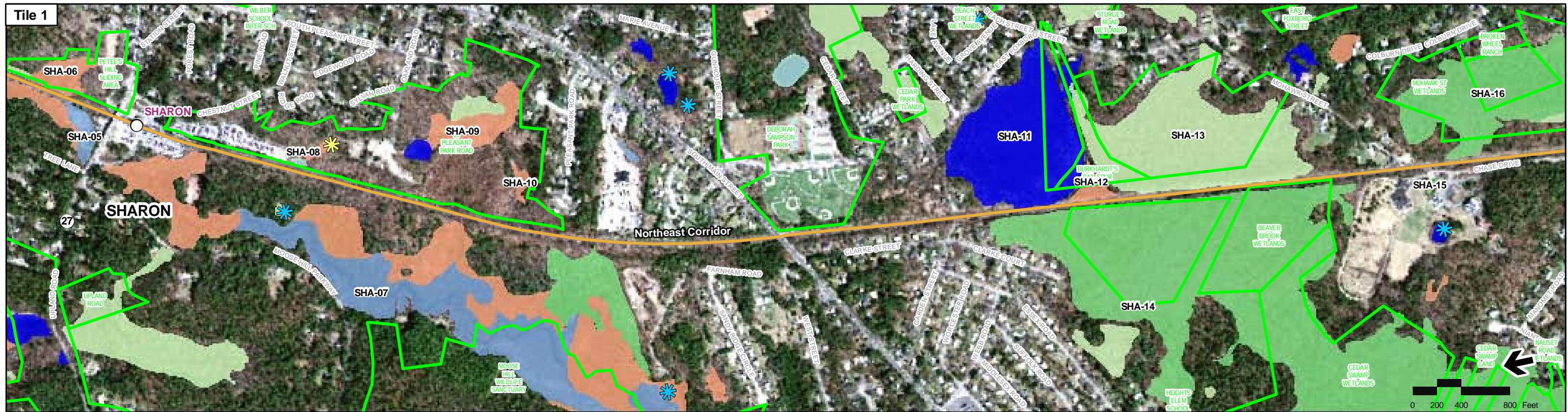
- Open Water
- Bog
- Cranberry Bog
- Other
- Deep Marsh
- Salt Marsh
- Shallow Marsh Meadow or Fen
- Shrub Swamp
- Wooded Swamp Coniferous
- Wooded Swamp Deciduous
- Wooded Swamp Mixed Trees

Index Map



**Figure 3-3b
Attleboro Alternative
Northeast Corridor
Wetlands**

Source: MassGIS, VHB
Prepared by: VHB



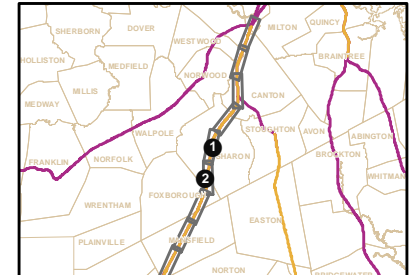
Printing Date: 3/17/2009
 File: \\mbos\projects\10111_00\GIS\project\Phase2\TechReports\Wetlands\RailOptions\WET_Fig3-3c_NEC.mxd

- Legend**
- MBTA Commuter Rail Station
 - Proposed Stations
 - MBTA Commuter Rail
 - Town Boundaries
 - ✱ NHESP Certified Vernal Pools
 - ✱ NHESP Potential Vernal Pools
 - ✱ SCR Identified Vernal Pools (Field Verified)
 - Protected Open Space

- Wetlands**
- Open Water
 - Bog
 - Cranberry Bog
 - Other
 - Deep Marsh
 - Salt Marsh
 - Shallow Marsh Meadow or Fen
 - Shrub Swamp
 - Wooded Swamp Coniferous
 - Wooded Swamp Deciduous
 - Wooded Swamp Mixed Trees

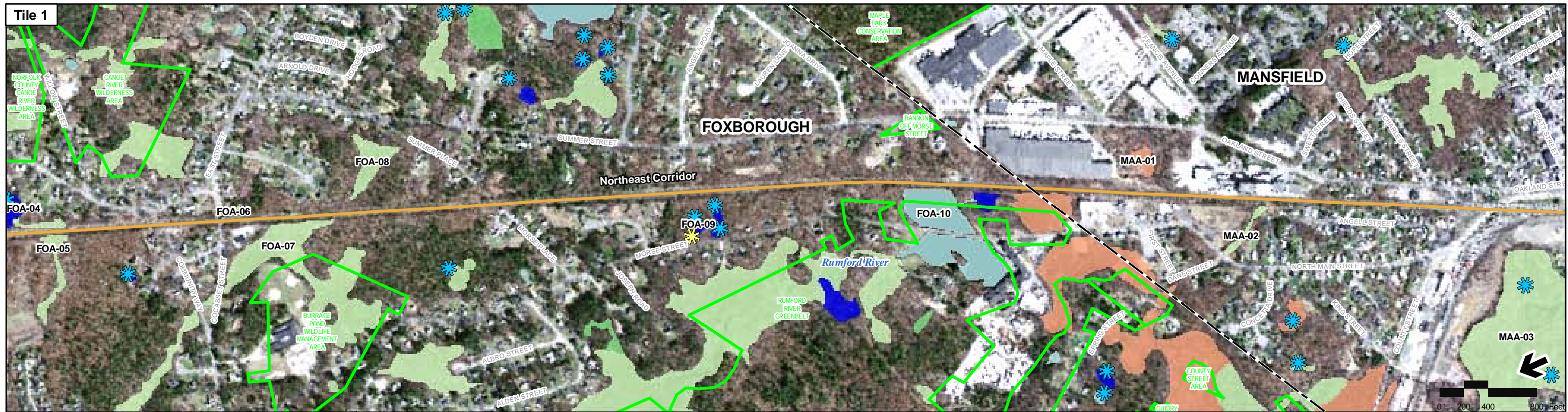
Note: NHESP Potential Vernal Pools: NOT equivalent to Certified Vernal Pools

Index Map



**Figure 3-3c
Attleboro Alternative
Northeast Corridor
Wetlands**

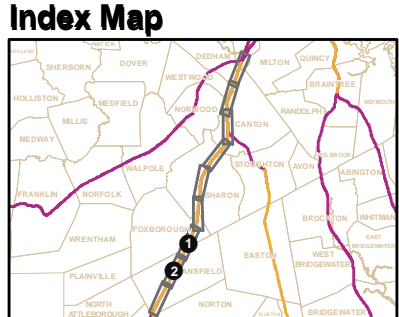
Source: MassGIS, VHB
Prepared by: VHB



Printing Date: 3/17/2009
 File: \\mbas\projects\10111_00\GIS\project\Phase2\TechReports\Wetlands\RailOptions\SWET_Fig3-3d_NEC.mxd

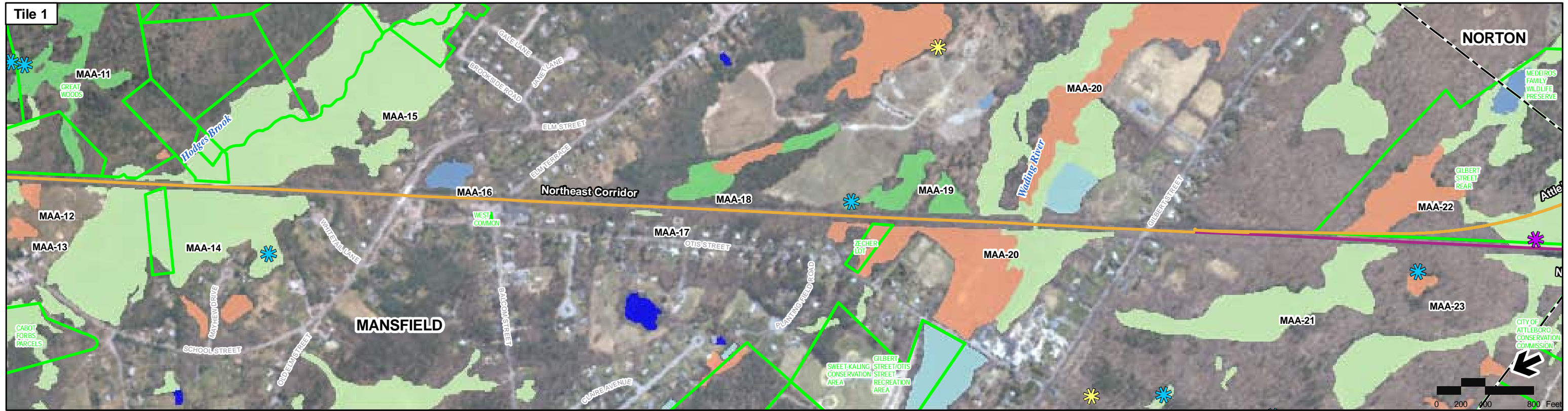
Legend

| | | | |
|------------------------------|------------------------|--|-------------------------------|
| ○ MBTA Commuter Rail Station | ● Proposed Stations | ✳ NHESP Certified Vernal Pools | Wetlands |
| — MBTA Commuter Rail | — Proposed Alternative | ✳ NHESP Potential Vernal Pools | □ Open Water |
| — Town Boundaries | □ Protected Open Space | ✳ SCR Identified Vernal Pools (Field Verified) | □ Bog |
| | | Note: NHESP Potential Vernal Pools: NOT equivalent to Certified Vernal Pools | □ Cranberry Bog |
| | | | □ Other |
| | | | □ Deep Marsh |
| | | | □ Shallow Marsh Meadow or Fen |
| | | | □ Salt Marsh |
| | | | □ Shrub Swamp |
| | | | □ Wooded Swamp Coniferous |
| | | | □ Wooded Swamp Deciduous |
| | | | □ Wooded Swamp Mixed Trees |



**Figure 3-3d
Attleboro Alternative
Northeast Corridor
Wetlands**

Source: MassGIS, VHB
Prepared by: VHB



Printing Date: 3/17/2009

Legend

- MBTA Commuter Rail Station
- Proposed Stations
- MBTA Commuter Rail
- Town Boundaries
- NHESP Certified Vernal Pools
- NHESP Potential Vernal Pools
- SCR Identified Vernal Pools (Field Verified)
- Proposed Alternative
- Protected Open Space
- Note: NHESP Potential Vernal Pools: NOT equivalent to Certified Vernal Pools
- Wetlands**
- Open Water
- Bog
- Cranberry Bog
- Other
- Deep Marsh
- Salt Marsh
- Shallow Marsh Meadow or Fen
- Shrub Swamp
- Wooded Swamp Coniferous
- Wooded Swamp Deciduous
- Wooded Swamp Mixed Trees

Index Map

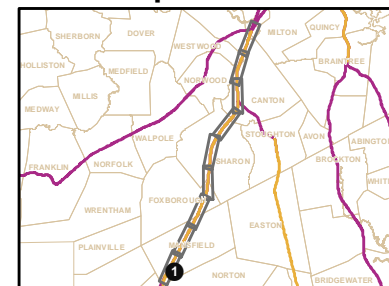
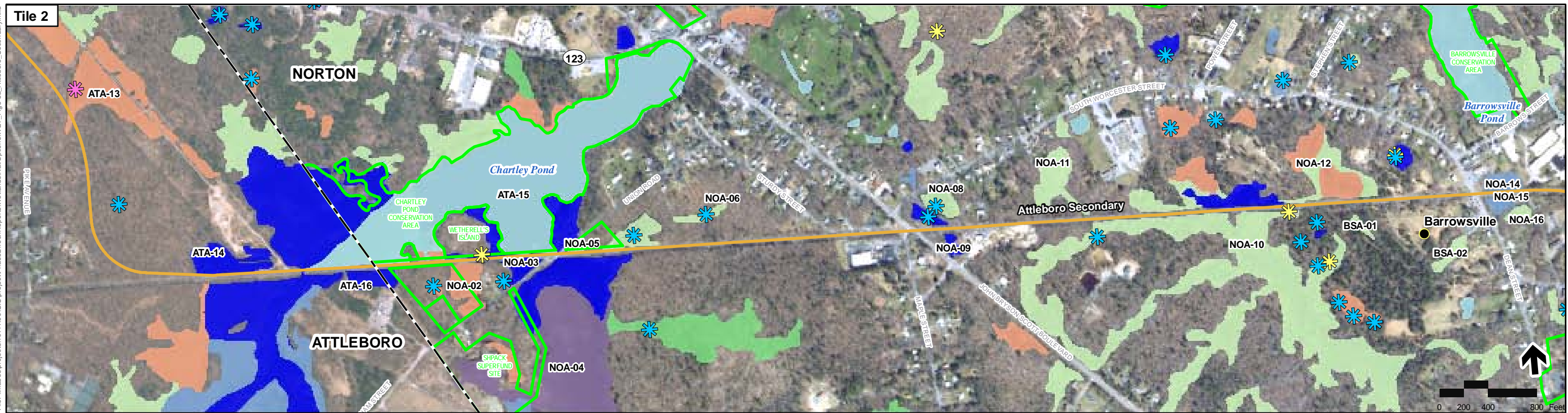
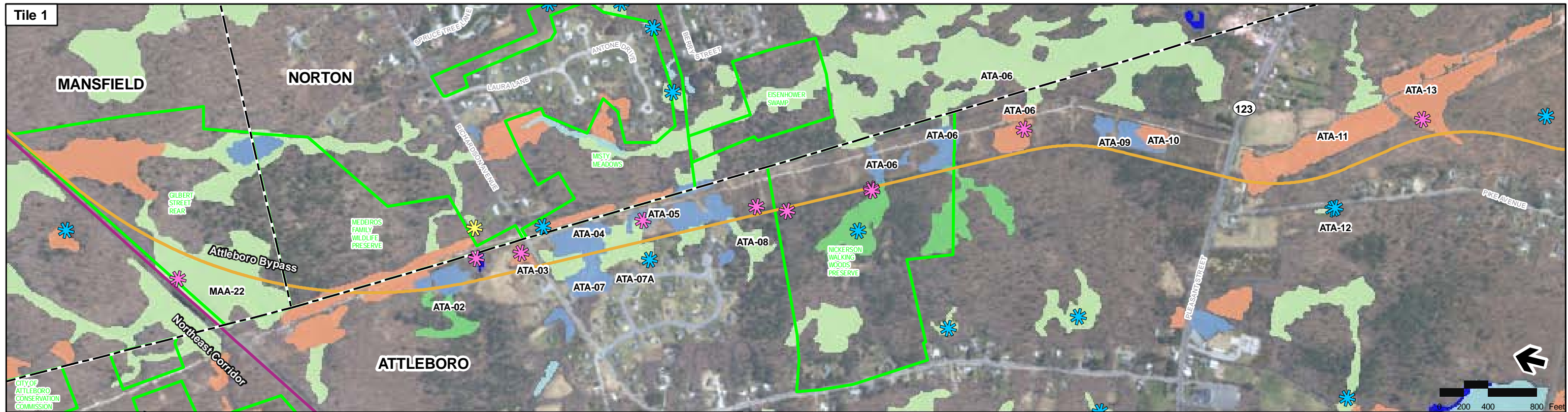


Figure 3-3e
Attleboro Alternative
Northeast Corridor
Wetlands

Source: MassGIS, VHB
 Prepared by: VHB



Printing Date: 3/17/2009
 File: \\mabos\project\10111.00\GIS\project\Phase2\Tech\Reports\Wetlands\Rail\Options\WET_Fig3-3a_Attleboro_Secondary.mxd

Legend

| | | | |
|------------------------------|------------------------|--|----------------------------|
| ○ MBTA Commuter Rail Station | ● Proposed Stations | ★ NHESP Certified Vernal Pools | Wetlands |
| — MBTA Commuter Rail | — Proposed Alternative | ★ NHESP Potential Vernal Pools | □ Open Water |
| - - Town Boundaries | □ Protected Open Space | ★ SCR Identified Vernal Pools (Field Verified) | □ Bog |
| | | Note: NHESP Potential Vernal Pools: NOT equivalent to Certified Vernal Pools | □ Cranberry Bog |
| | | | □ Other |
| | | | □ Deep Marsh |
| | | | □ Salt Marsh |
| | | | □ Shrub Swamp |
| | | | □ Wooded Swamp Coniferous |
| | | | □ Wooded Swamp Deciduous |
| | | | □ Wooded Swamp Mixed Trees |

Index Map

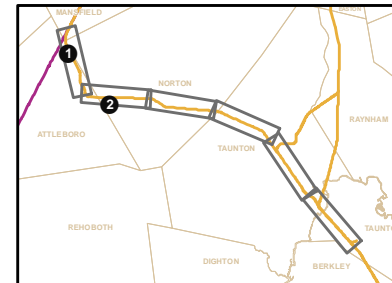
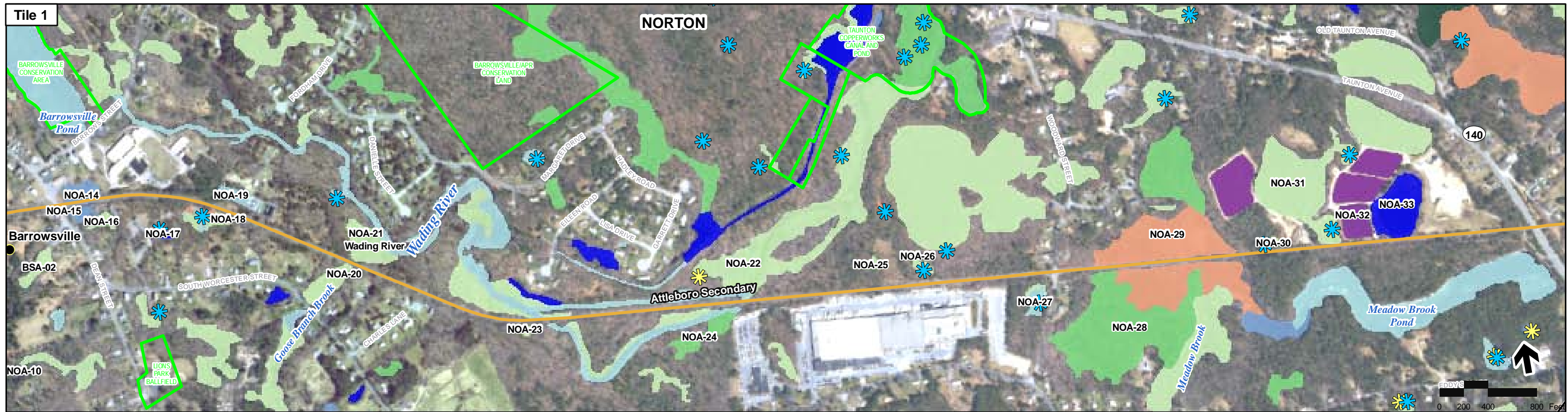


Figure 3-4a
Attleboro Alternative
Attleboro Secondary from Cotley Junction to Attleboro Bypass
Wetlands
 Source: MassGIS, VHB
 Prepared by: VHB



Printing Date: 3/17/2009
 File: \\massgis\projects\10111_00\GIS\project\Phase2\TechReports\Wetlands\RailOptions\SWET_Fig3-3b_Atteleboro_Secondary.mxd

- Legend**
- MBTA Commuter Rail Station
 - Proposed Stations
 - MBTA Commuter Rail
 - - Town Boundaries
 - NHESP Certified Vernal Pools
 - ✪ NHESP Potential Vernal Pools
 - ✪ SCR Identified Vernal Pools (Field Verified)
 - Proposed Alternative
 - Protected Open Space
 - Wetlands
 - Open Water
 - Bog
 - Cranberry Bog
 - Other
 - Deep Marsh
 - Salt Marsh
 - Shallow Marsh Meadow or Fen
 - Shrub Swamp
 - Wooded Swamp Coniferous
 - Wooded Swamp Deciduous
 - Wooded Swamp Mixed Trees

Note: NHESP Potential Vernal Pools: NOT equivalent to Certified Vernal Pools

Index Map

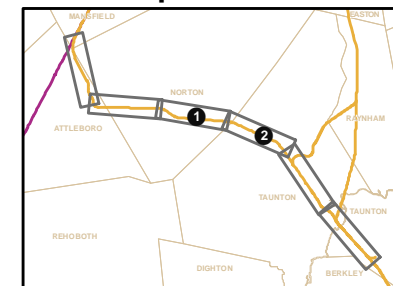
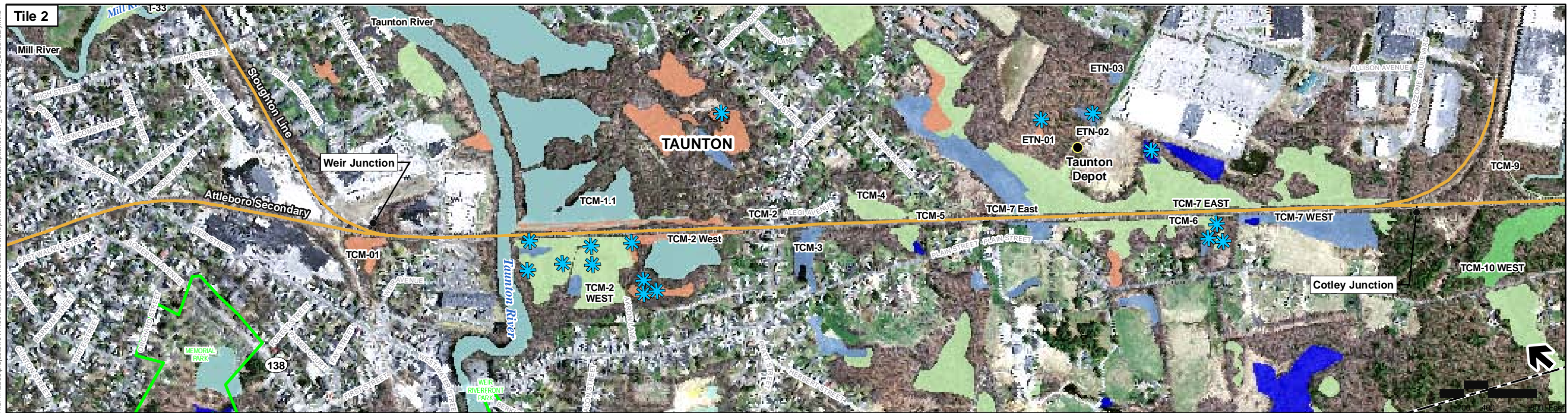
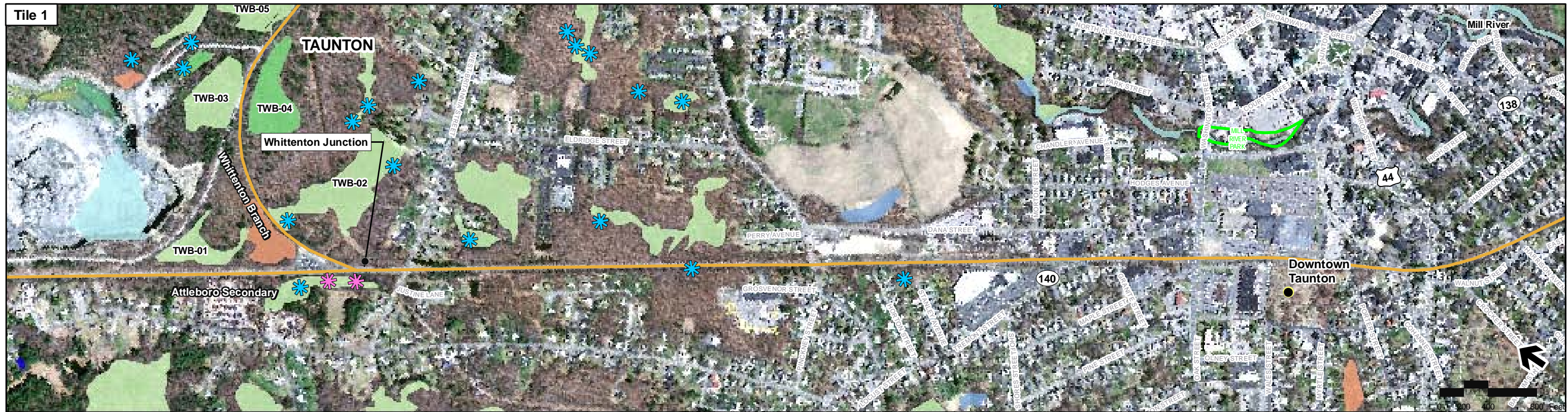


Figure 3-4b
Attleboro Alternative
Attleboro Secondary from Cotley Junction to Attleboro Bypass
Wetlands

Source: MassGIS, VHB
 Prepared by: VHB



Printing Date: 3/17/2009
 File: \\mbos\projects\10111_00\GIS\project\Phase2\TechReports\Wetlands\RailOptions\WET_Fig3-3c_Atteleboro_Secondary.mxd

Legend

- | | | | |
|------------------------------|------------------------|--|-------------------------------|
| ○ MBTA Commuter Rail Station | ● Proposed Stations | ★ NHESP Certified Vernal Pools | Wetlands |
| — MBTA Commuter Rail | — Proposed Alternative | ★ NHESP Potential Vernal Pools | □ Open Water |
| — Town Boundaries | □ Protected Open Space | ★ SCR Identified Vernal Pools (Field Verified) | □ Bog |
| | | Note: NHESP Potential Vernal Pools: NOT equivalent to Certified Vernal Pools | □ Shrub Swamp |
| | | | □ Cranberry Bog |
| | | | □ Other |
| | | | □ Deep Marsh |
| | | | □ Salt Marsh |
| | | | □ Shallow Marsh Meadow or Fen |
| | | | □ Wooded Swamp Coniferous |
| | | | □ Wooded Swamp Deciduous |
| | | | □ Wooded Swamp Mixed Trees |

Index Map

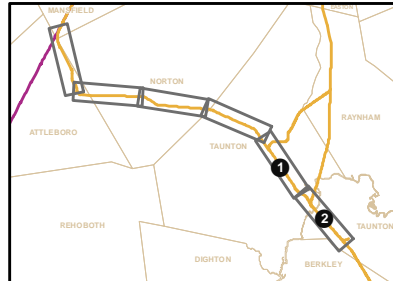
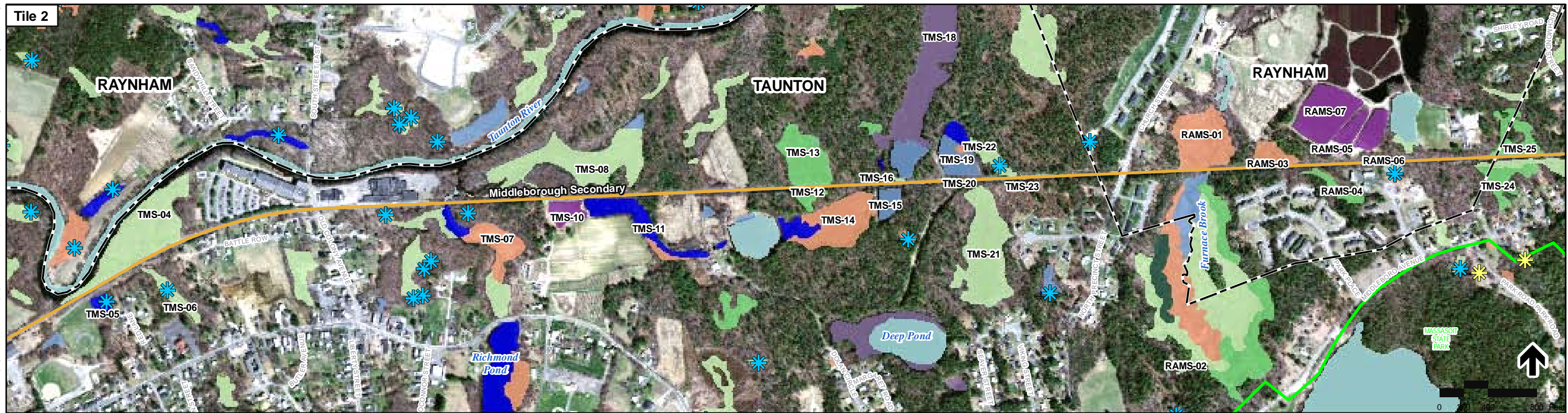


Figure 3-4c
Attleboro Alternative
Attleboro Secondary from Cotley Junction to Attleboro Bypass
Wetlands
 Source: MassGIS, VHB
 Prepared by: VHB



Legend

- MBTA Commuter Rail Station
- Proposed Stations
- MBTA Commuter Rail
- - Town Boundaries
- NHESP Certified Vernal Pools
- ✿ NHESP Potential Vernal Pools
- ✿ SCR Identified Vernal Pools (Field Verified)
- Note: NHESP Potential Vernal Pools: NOT equivalent to Certified Vernal Pools
- Protected Open Space

Wetlands

- Open Water
- Bog
- Cranberry Bog
- Other
- Deep Marsh
- Salt Marsh
- Shallow Marsh Meadow or Fen
- Shrub Swamp
- Wooded Swamp Coniferous
- Wooded Swamp Deciduous
- Wooded Swamp Mixed Trees

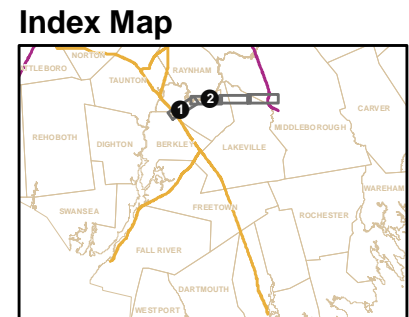


Figure 3-5a

Wetlands
Middleborough Alternative
Middleborough Secondary

Source: MassGIS, VHB
 Prepared by: VHB

Printing Date: 3/18/2009
 File: \\mabos\projects\10111_00\GIS\project\Phase2\TbchReports\Wetlands\RailOptions\WET_Fig3-5a_Middleborough_Secondary.mxd



Printing Date: 3/18/2009
 File: \\mbos\projects\10111_00\GIS\project\Phase2\TechReports\Wetlands\RailOptions\SWET_Fig3-5b_Middleborough_Secondary.mxd

Legend

- | | | | |
|------------------------------|------------------------|--|----------------------------|
| ○ MBTA Commuter Rail Station | ● Proposed Stations | ★ NHESP Certified Vernal Pools | Wetlands |
| — MBTA Commuter Rail | — Proposed Alternative | ★ NHESP Potential Vernal Pools | □ Open Water |
| - - Town Boundaries | □ Protected Open Space | ★ SCR Identified Vernal Pools (Field Verified) | □ Bog |
| | | Note: NHESP Potential Vernal Pools: NOT equivalent to Certified Vernal Pools | □ Shrub Swamp |
| | | | □ Wooded Swamp Coniferous |
| | | | □ Wooded Swamp Deciduous |
| | | | □ Wooded Swamp Mixed Trees |
| | | | □ Cranberry Bog |
| | | | □ Other |
| | | | □ Deep Marsh |
| | | | □ Salt Marsh |

Index Map

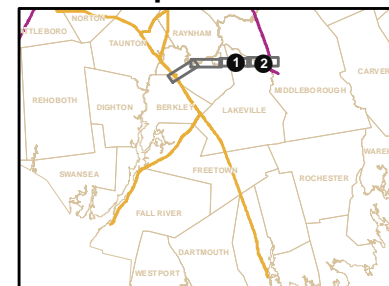
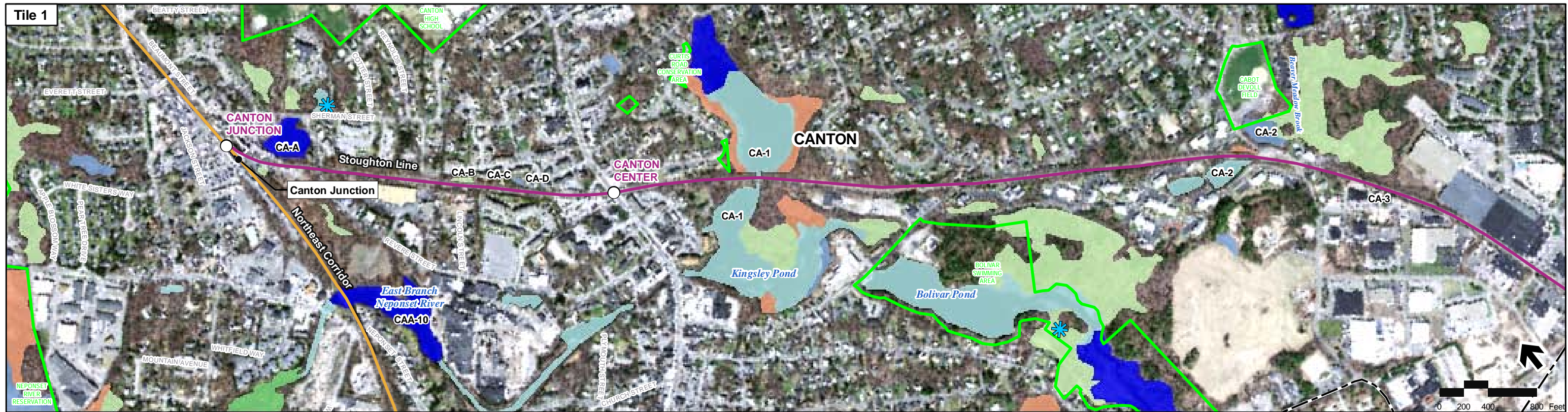


Figure 3-5b

**Wetlands
Middleborough Alternative
Middleborough Secondary**

Source: MassGIS, VHB
Prepared by: VHB



Printing Date: 3/18/2009
 File: \\mabos\projects\10111_00\GIS\project\Phase2\TechReports\Wetlands\RailOptions\WET_Fig3-6a_Stoughton.mxd

Legend

| | | | |
|------------------------------|------------------------|--|-----------------------------|
| ○ MBTA Commuter Rail Station | ● Proposed Stations | ✱ NHESP Certified Vernal Pools | Wetlands |
| — MBTA Commuter Rail | — Proposed Alternative | ✱ NHESP Potential Vernal Pools | Open Water |
| - - Town Boundaries | ▭ Protected Open Space | ✱ SCR Identified Vernal Pools (Field Verified) | Shallow Marsh Meadow or Fen |
| | | | Shrub Swamp |
| | | | Wooded Swamp Coniferous |
| | | | Wooded Swamp Deciduous |
| | | | Wooded Swamp Mixed Trees |
| | | | Deep Marsh |
| | | | Salt Marsh |

Note: NHESP Potential Vernal Pools: NOT equivalent to Certified Vernal Pools

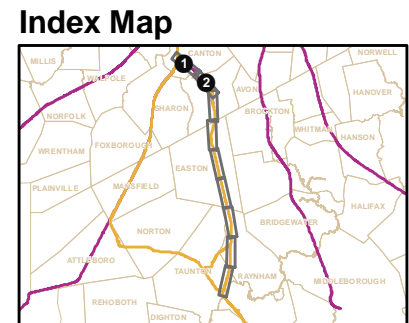
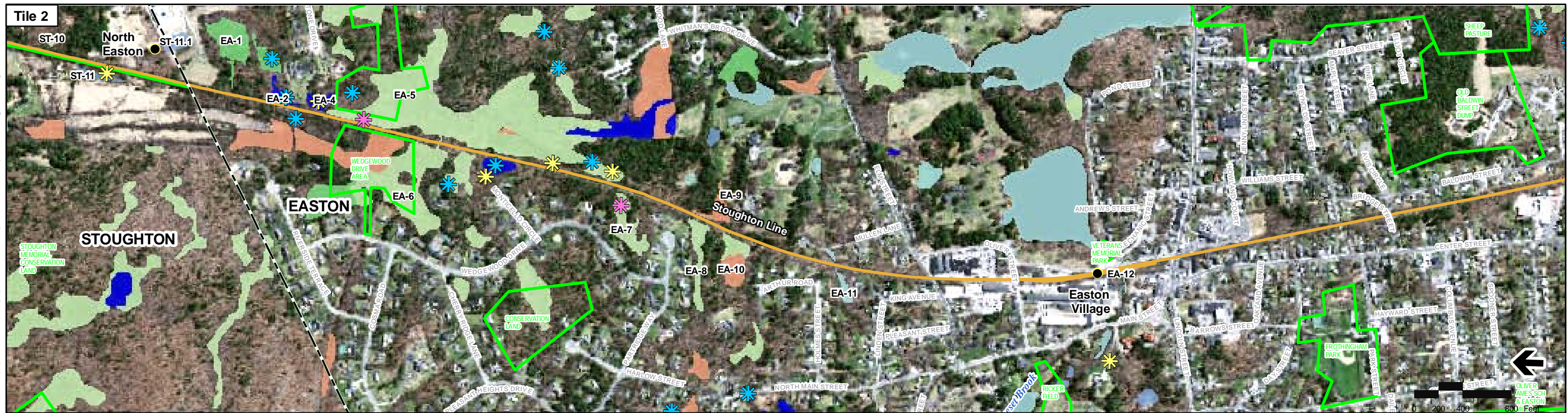


Figure 3-6a
Wetlands
Stoughton Alternative

Source: MassGIS, VHB
 Prepared by: VHB



Printing Date: 3/18/2009
 File:\mabos\projects\10111_000\GIS\project\Phase2\TechReports\Wetlands\RailOptions\WET_Fig3-6b_Stoughton.mxd

Legend

| | | | |
|------------------------------|------------------------|--|----------------------------|
| ○ MBTA Commuter Rail Station | ● Proposed Stations | ✱ NHESP Certified Vernal Pools | Wetlands |
| — MBTA Commuter Rail | — Proposed Alternative | ✱ NHESP Potential Vernal Pools | □ Open Water |
| --- Town Boundaries | □ Protected Open Space | ✱ SCR Identified Vernal Pools (Field Verified) | □ Bog |
| | | Note: NHESP Potential Vernal Pools: NOT equivalent to Certified Vernal Pools | □ Shrub Swamp |
| | | | □ Wooded Swamp Coniferous |
| | | | □ Wooded Swamp Deciduous |
| | | | □ Wooded Swamp Mixed Trees |
| | | | □ Deep Marsh |
| | | | □ Salt Marsh |
| | | | □ Cranberry Bog |
| | | | □ Other |

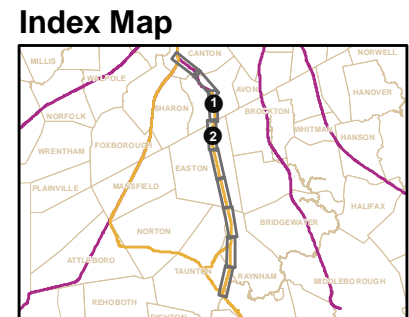
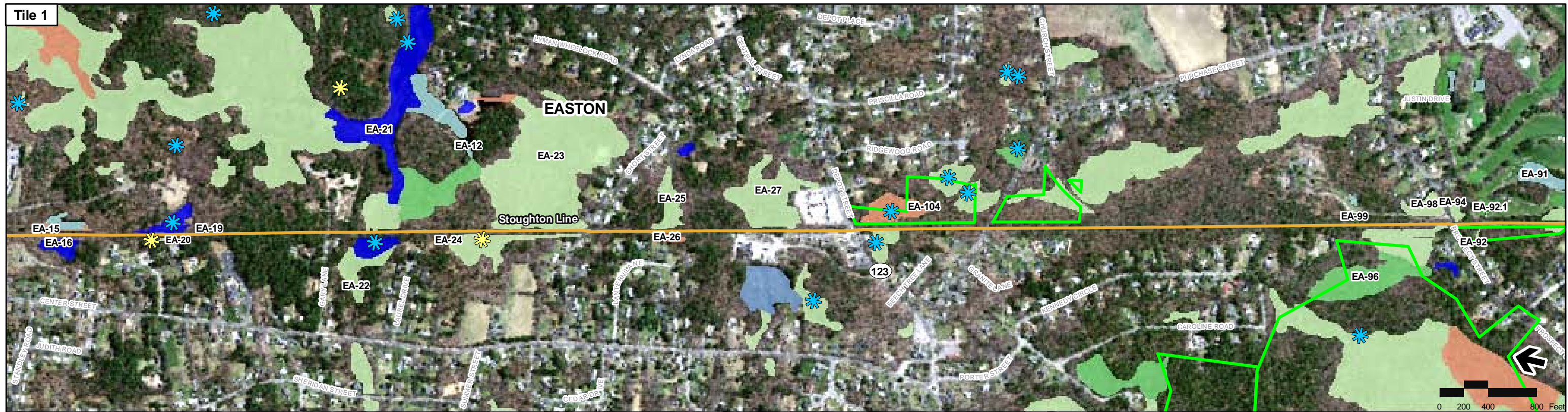


Figure 3-6b
Wetlands
Stoughton Alternative

Source: MassGIS, VHB
 Prepared by: VHB



Printing Date: 3/18/2009
 File: \\mabos\projects\10111_00\GIS\project\Phase2\TieOffReports\Wetlands\RailOptions\WET_Fig3-6c_Stoughton.mxd

Legend

| | | | |
|------------------------------|------------------------|--|----------------------------|
| ○ MBTA Commuter Rail Station | ● Proposed Stations | ✱ NHESP Certified Vernal Pools | Wetlands |
| — MBTA Commuter Rail | — Proposed Alternative | ✱ NHESP Potential Vernal Pools | □ Open Water |
| — Town Boundaries | □ Protected Open Space | ✱ SCR Identified Vernal Pools (Field Verified) | □ Bog |
| | | Note: NHESP Potential Vernal Pools: NOT equivalent to Certified Vernal Pools | □ Shrub Swamp |
| | | | □ Wooded Swamp Coniferous |
| | | | □ Wooded Swamp Deciduous |
| | | | □ Wooded Swamp Mixed Trees |
| | | | □ Cranberry Bog |
| | | | □ Other |
| | | | □ Deep Marsh |
| | | | □ Salt Marsh |

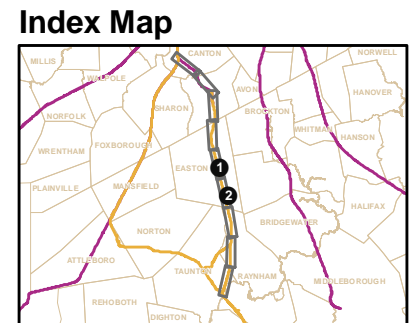
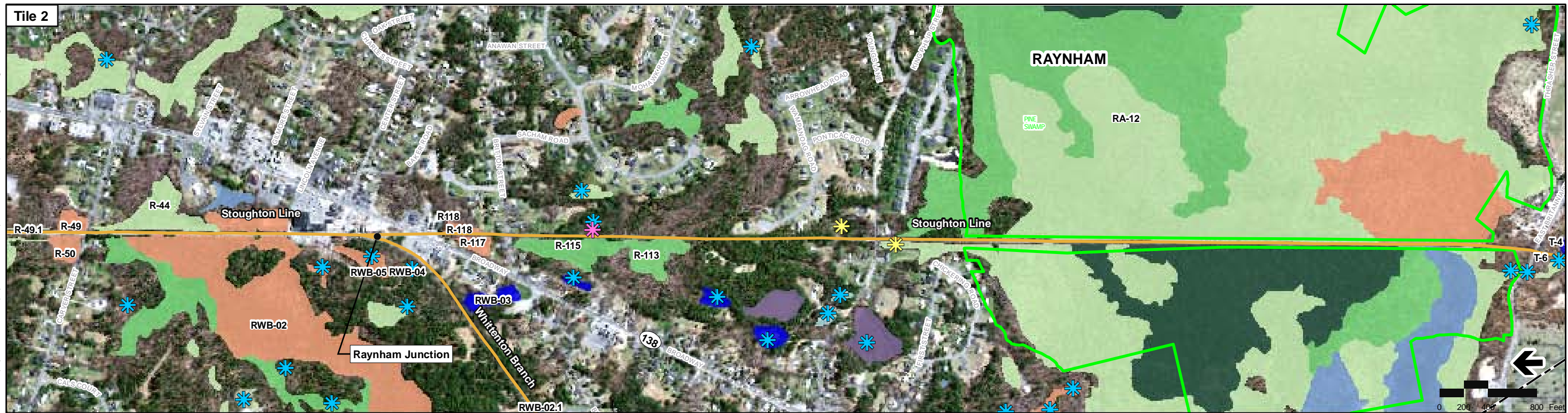
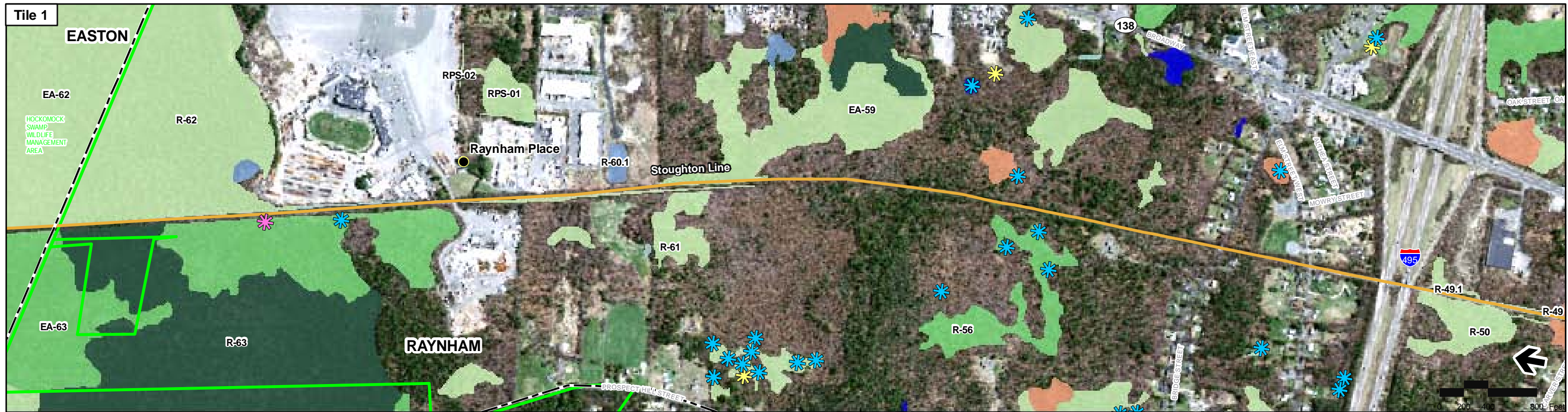


Figure 3-6c
Wetlands
Stoughton Alternative

Source: MassGIS, VHB
 Prepared by: VHB



Printing Date: 3/18/2009
 File: \\mbos\projects\10111_00\GIS\project\Phase2\TbchReports\Wetlands\RailOptions\WET_Fig3-6d_Stoughton.mxd

- Legend**
- MBTA Commuter Rail Station
 - Proposed Stations
 - MBTA Commuter Rail
 - Town Boundaries
 - NHESP Certified Vernal Pools
 - NHESP Potential Vernal Pools
 - SCR Identified Vernal Pools (Field Verified)
 - Proposed Alternative
 - Protected Open Space

Note: NHESP Potential Vernal Pools: NOT equivalent to Certified Vernal Pools

- Wetlands**
- Open Water
 - Bog
 - Cranberry Bog
 - Other
 - Deep Marsh
 - Salt Marsh
 - Shallow Marsh Meadow or Fen
 - Shrub Swamp
 - Wooded Swamp Coniferous
 - Wooded Swamp Deciduous
 - Wooded Swamp Mixed Trees

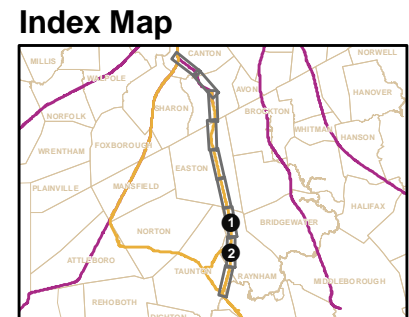
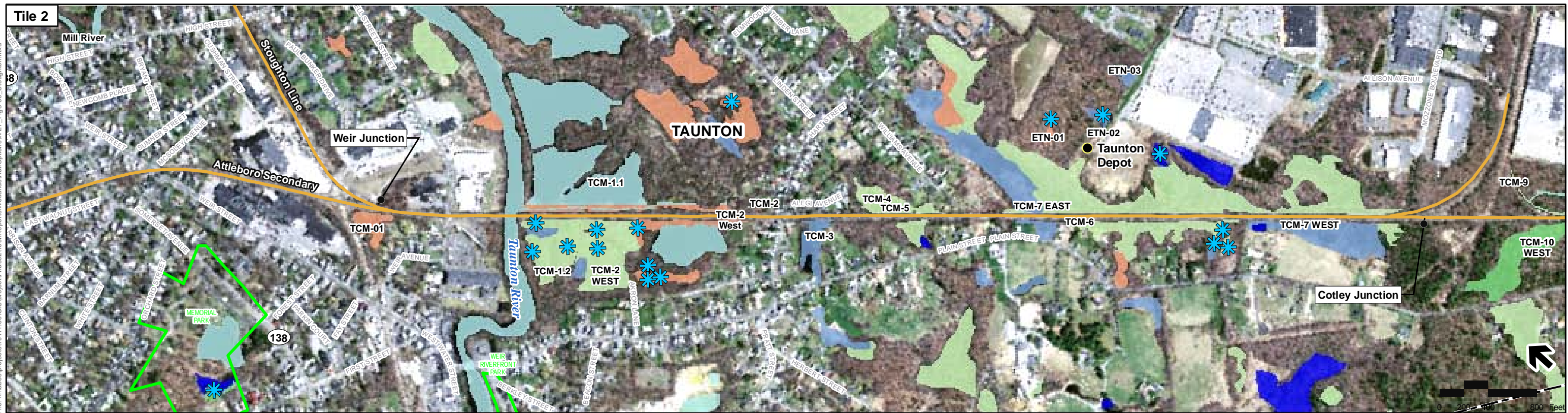


Figure 3-6d
Wetlands
Stoughton Alternative

Source: MassGIS, VHB
 Prepared by: VHB



Printing Date: 3/18/2009
 File: \\mbos\proj\gis\project\Phase2\Taunton\Reports\Wetlands\RailOptions\WET_Fig3-6e_Stoughton.mxd

Legend

- MBTA Commuter Rail Station
- Proposed Stations
- MBTA Commuter Rail
- Town Boundaries
- NHESP Certified Vernal Pools
- NHESP Potential Vernal Pools
- SCR Identified Vernal Pools (Field Verified)
- Proposed Alternative
- Protected Open Space

- NHESP Certified Vernal Pools
- NHESP Potential Vernal Pools
- SCR Identified Vernal Pools (Field Verified)

Note: NHESP Potential Vernal Pools: NOT equivalent to Certified Vernal Pools

Wetlands

- Open Water
- Bog
- Cranberry Bog
- Other
- Deep Marsh
- Salt Marsh
- Shallow Marsh Meadow or Fen
- Shrub Swamp
- Wooded Swamp Coniferous
- Wooded Swamp Deciduous
- Wooded Swamp Mixed Trees

Index Map

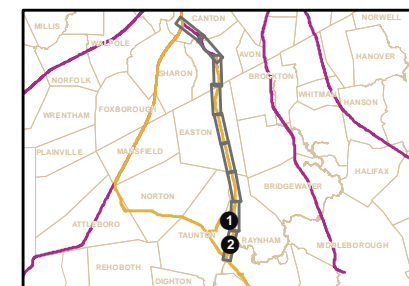
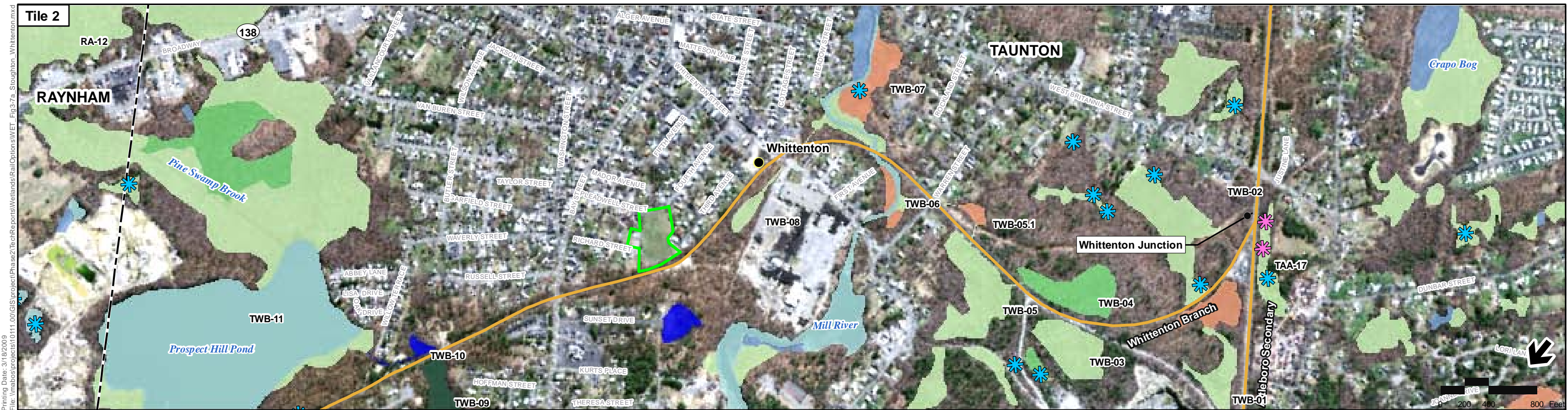


Figure 3-6e
Wetlands
Stoughton Alternative

Source: MassGIS, VHB
 Prepared by: VHB



Legend

- MBTA Commuter Rail Station
- Proposed Stations
- MBTA Commuter Rail
- Proposed Alternative
- - - Town Boundaries
- Protected Open Space
- ☼ NHESP Certified Vernal Pools
- ☼ NHESP Potential Vernal Pools
- ☼ SCR Identified Vernal Pools (Field Verified)

Note: NHESP Potential Vernal Pools: NOT equivalent to Certified Vernal Pools

Wetlands

- Open Water
- Bog
- Cranberry Bog
- Other
- Deep Marsh
- Salt Marsh
- Shallow Marsh Meadow or Fen
- Shrub Swamp
- Wooded Swamp Coniferous
- Wooded Swamp Deciduous
- Wooded Swamp Mixed Trees

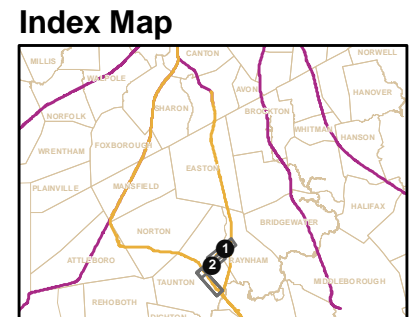
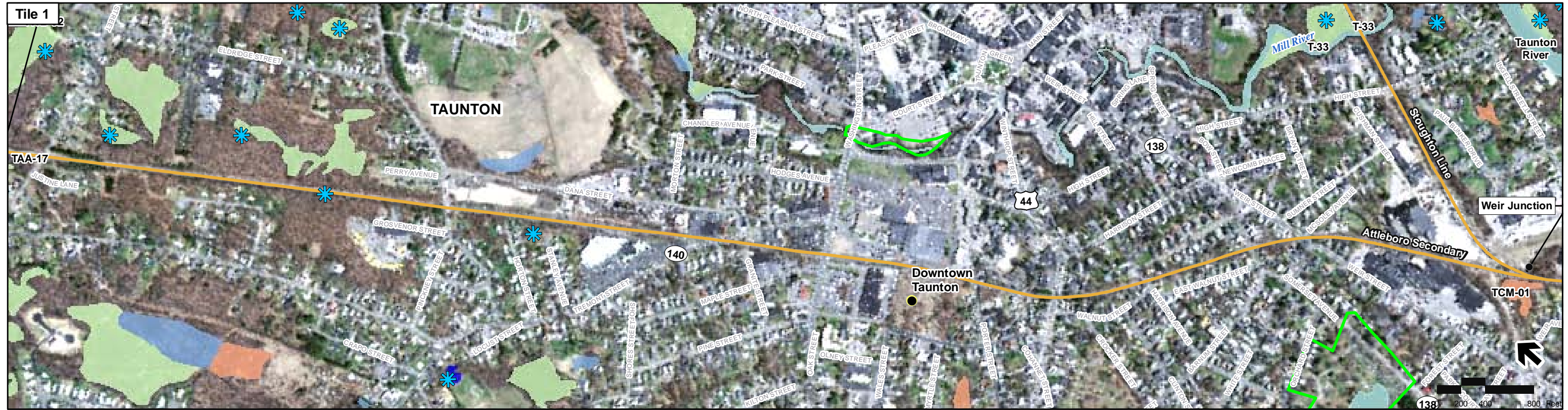


Figure 3-7a

Wetlands
Stoughton Alternative
Whittenton Variation

Source: MassGIS, VHB
 Prepared by: VHB



Printing Date: 3/18/2009
 File: \\mabos\projects\0111_00\GIS\project\Phase2\TieOffReports\Wetlands\RailOptions\WET_Fig3-7b_Stoughton_Whittenton.mxd

Legend

- | | | | | |
|------------------------------|------------------------|--|-----------------|-------------------------------|
| ○ MBTA Commuter Rail Station | ● Proposed Stations | ✱ NHESP Certified Vernal Pools | Wetlands | |
| — MBTA Commuter Rail | — Proposed Alternative | ✱ NHESP Potential Vernal Pools | □ Open Water | □ Shallow Marsh Meadow or Fen |
| — Town Boundaries | □ Protected Open Space | ✱ SCR Identified Vernal Pools (Field Verified) | □ Bog | □ Shrub Swamp |
| | | Note: NHESP Potential Vernal Pools: NOT equivalent to Certified Vernal Pools | □ Cranberry Bog | □ Wooded Swamp Coniferous |
| | | | □ Other | □ Wooded Swamp Deciduous |
| | | | □ Deep Marsh | □ Wooded Swamp Mixed Trees |
| | | | □ Salt Marsh | |

Index Map

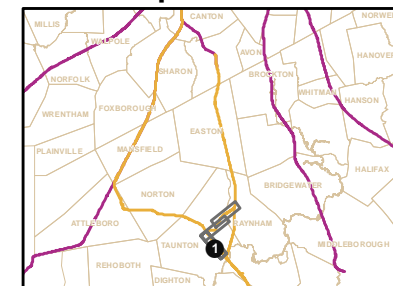


Figure 3-7b

**Wetlands
Stoughton Alternative
Whittenton Variation**

Source: MassGIS, VHB
Prepared by: VHB



Legend

- Proposed Alternative
 - Protected Open Space
 - Proposed Stations
 - ✻ NHESP Certified Vernal Pools
 - ✻ NHESP Potential Vernal Pools
 - ✻ SCR Identified Vernal Pools (Field Verified)
 - Note: NHESP Potential Vernal Pools: NOT equivalent to Certified Vernal Pools
- | Wetlands | |
|--|---|
| Open Water | Shallow Marsh Meadow or Fen |
| Bog | Shrub Swamp |
| Cranberry Bog | Wooded Swamp Coniferous |
| Other | Wooded Swamp Deciduous |
| Deep Marsh | Wooded Swamp Mixed Trees |
| Salt Marsh | |

Index Map

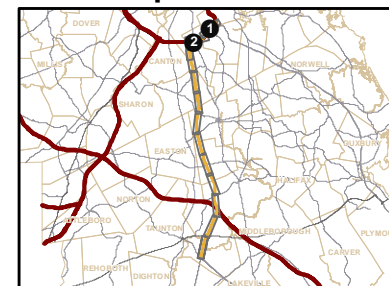
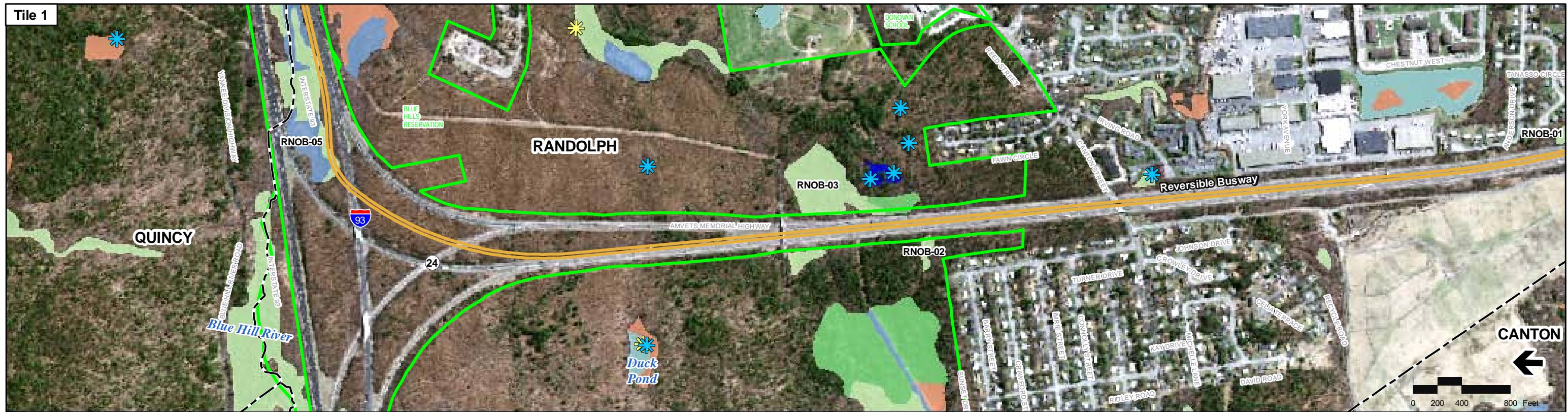


Figure 3-8a
Wetlands
Rapid Bus Alternative

Source: MassGIS, VHB
 Prepared by: VHB



Printing Date: 3/17/2009
 File: \\MABOS\projects\10111\00\GIS\project\Phase2\TechReports\Wetlands\Bus\Alternative\WET_Fig3-8b_Rapid_Bus.mxd

Legend

- Proposed Alternative
 - Proposed Station Locations
 - Protected Open Space
 - ✱ NHESP Certified Vernal Pools
 - ✱ NHESP Potential Vernal Pools
 - ✱ SCR Identified Vernal Pools (Field Verified)
 - Note: NHESP Potential Vernal Pools: NOT equivalent to Certified Vernal Pools
- | | |
|---|---|
| <p>Wetlands</p> <ul style="list-style-type: none"> Open Water Bog Cranberry Bog Other Deep Marsh Salt Marsh | <ul style="list-style-type: none"> Shallow Marsh Meadow or Fen Shrub Swamp Wooded Swamp Coniferous Wooded Swamp Deciduous Wooded Swamp Mixed Trees |
|---|---|

Index Map

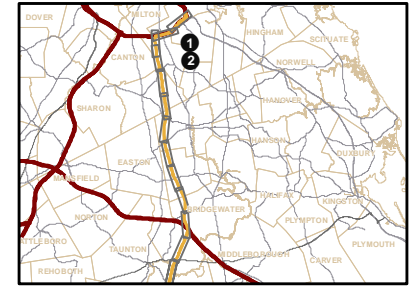
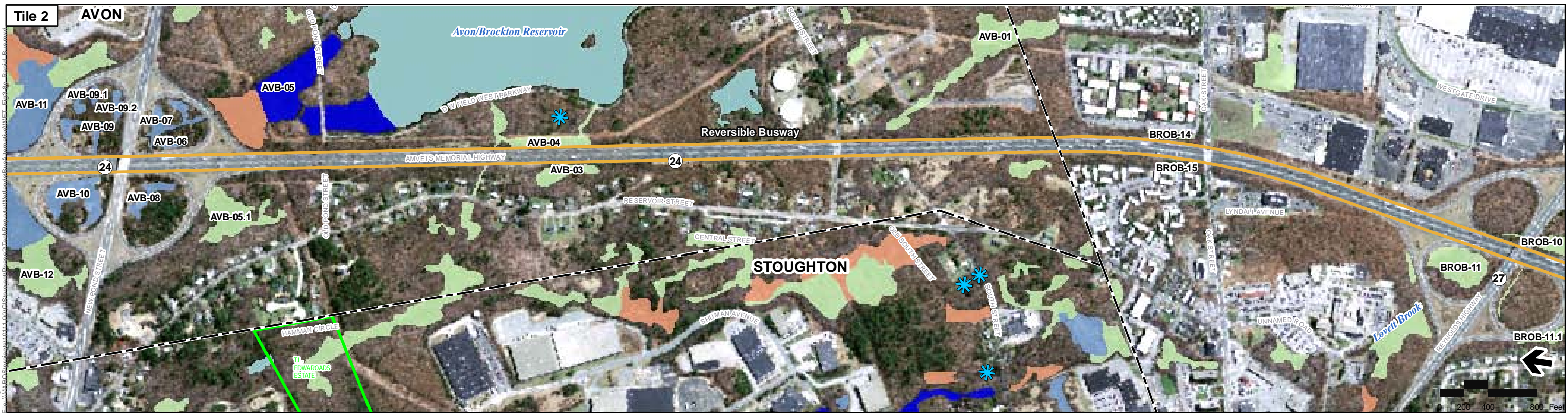
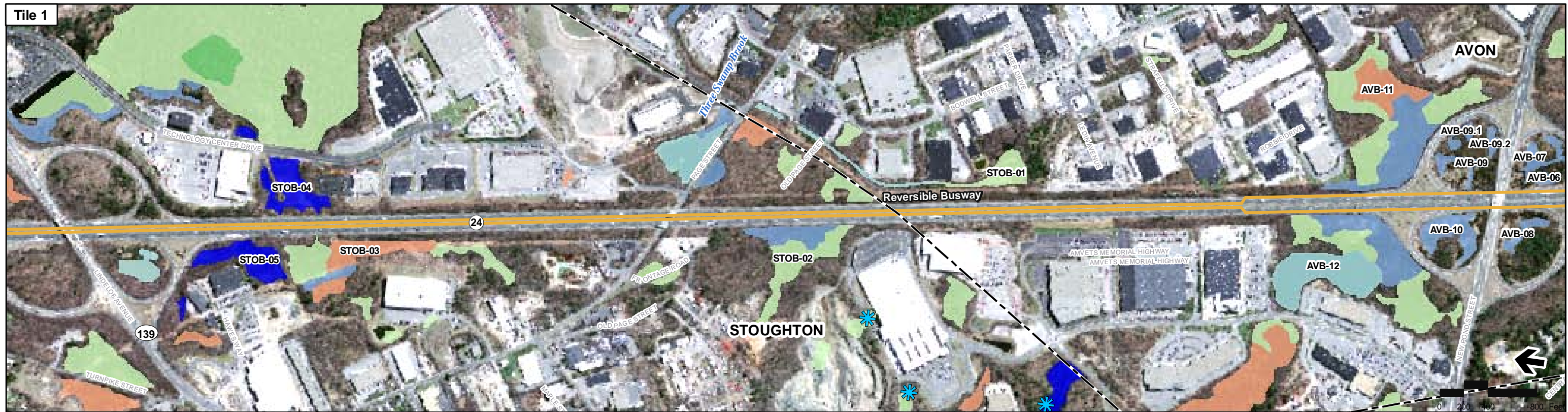


Figure 3-8b
Wetlands
Rapid Bus Alternative

Source: MassGIS, VHB
 Prepared by: VHB



Printing Date: 3/17/2009
 File: \\MAASGIS\GIS\Projects\3800\MapDocs\MapDocs\MapDocs\AVB-01-05.mxd

Legend

- | | | | | |
|----------------------------|--|-----------------|------------------------|-----------------------------|
| Proposed Alternative | NHESP Certified Vernal Pools | Wetlands | Open Water | Shallow Marsh Meadow or Fen |
| Proposed Station Locations | NHESP Potential Vernal Pools | Bog | Shrub Swamp | Wooded Swamp Coniferous |
| Protected Open Space | SCR Identified Vernal Pools (Field Verified) | Cranberry Bog | Wooded Swamp Deciduous | Wooded Swamp Mixed Trees |
| | Note: NHESP Potential Vernal Pools: NOT equivalent to Certified Vernal Pools | Other | Deep Marsh | |
| | | Salt Marsh | | |

Index Map

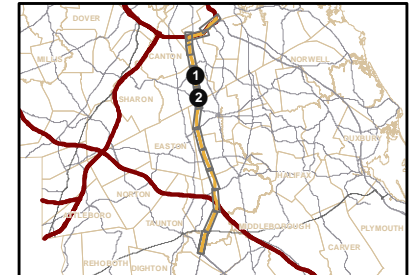
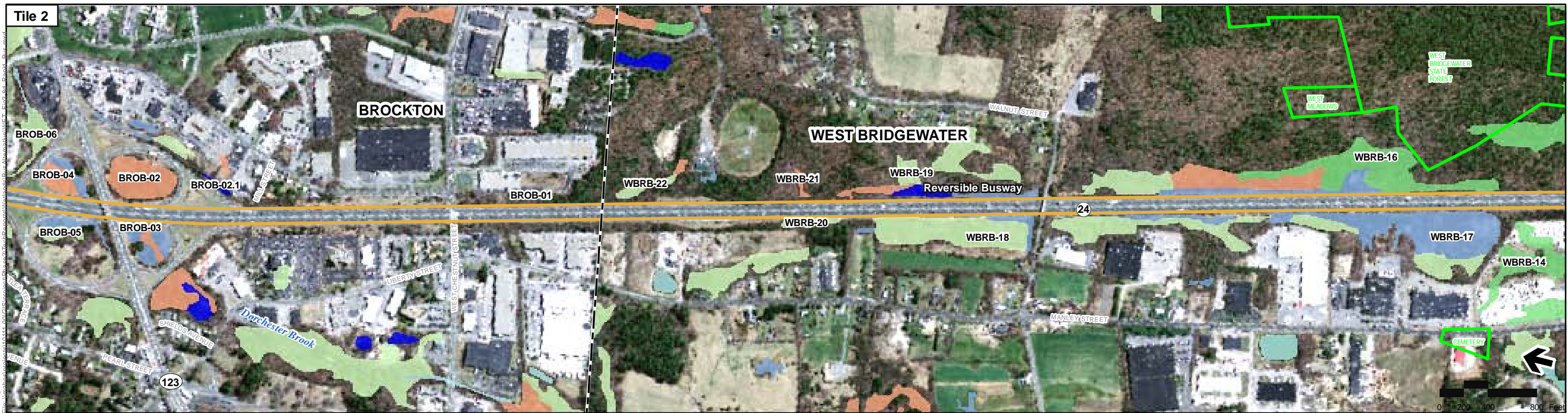
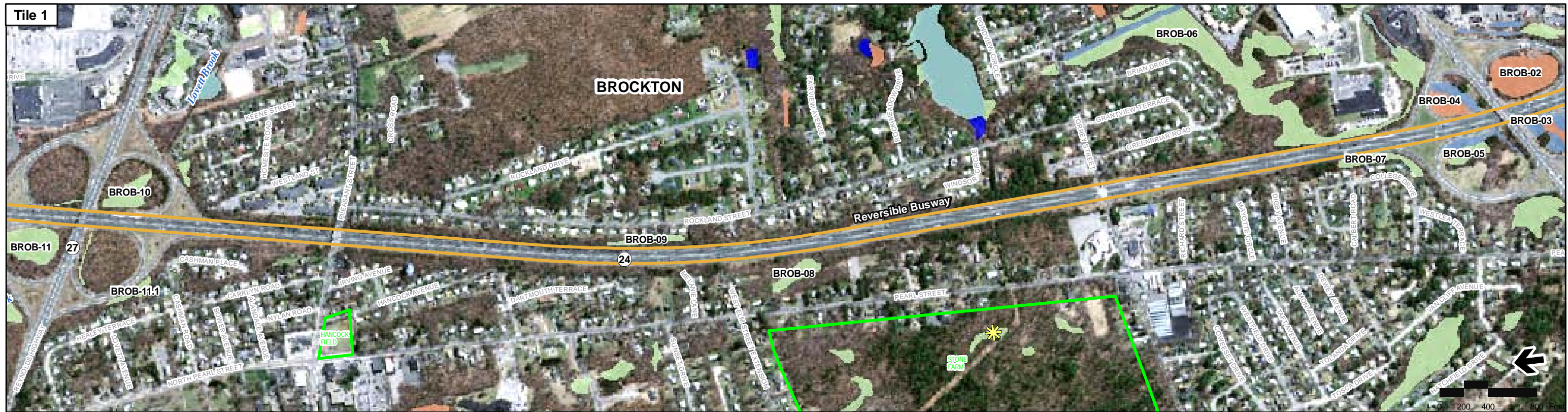


Figure 3-8c
Wetlands
Rapid Bus Alternative

Source: MassGIS, VHB
 Prepared by: VHB



Legend

- Proposed Alternative
- Proposed Station Locations
- Protected Open Space
- ✻ NHESP Certified Vernal Pools
- ✻ NHESP Potential Vernal Pools
- ✻ SCR Identified Vernal Pools (Field Verified)
- Note: NHESP Potential Vernal Pools: NOT equivalent to Certified Vernal Pools
- Wetlands**
- Open Water
- Bog
- Cranberry Bog
- Other
- Deep Marsh
- Salt Marsh
- Shallow Marsh Meadow or Fen
- Shrub Swamp
- Wooded Swamp Coniferous
- Wooded Swamp Deciduous
- Wooded Swamp Mixed Trees

Index Map

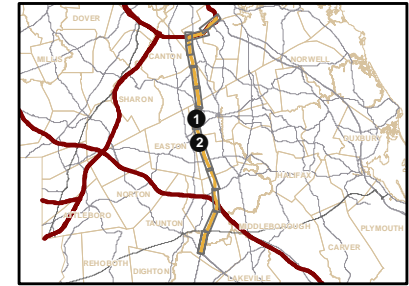
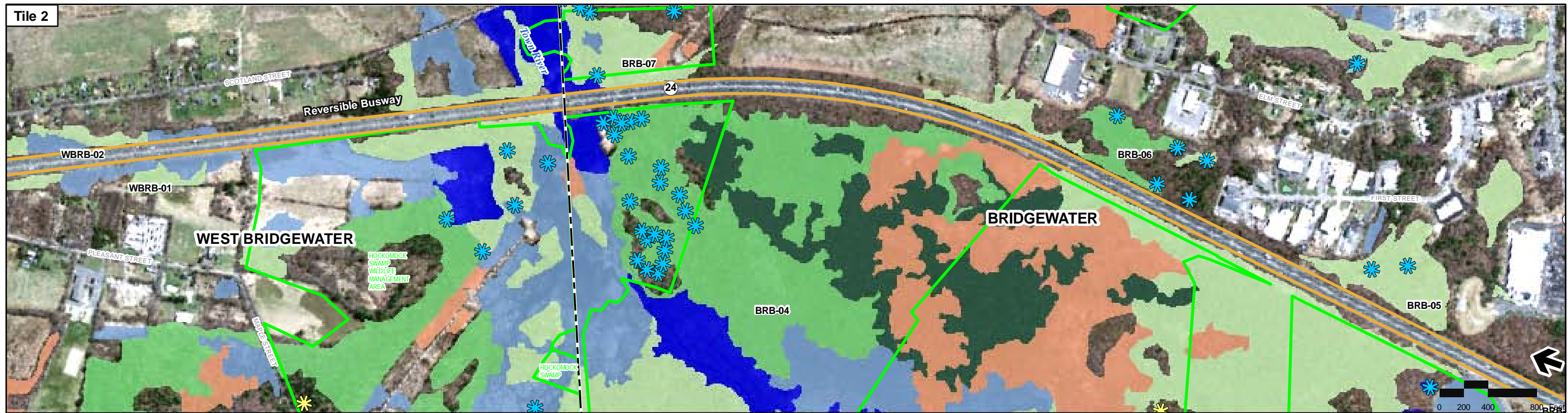


Figure 3-8d
Wetlands
Rapid Bus Alternative

Source: MassGIS, VHB
 Prepared by: VHB

Printing Date: 3/17/2009



Printing Date: 3/17/2009
 File: \\mabos\projects\10111_00\GIS\project\Phase2\TieChReports\Wetlands\BusAlternative\WET_Fig3-8e_Rapid_Bus.mxd

Legend

- | | | | | |
|----------------------------|--|-----------------|-------------|-----------------------------|
| Proposed Alternative | NHESP Certified Vernal Pools | Wetlands | Open Water | Shallow Marsh Meadow or Fen |
| Proposed Station Locations | NHESP Potential Vernal Pools | Bog | Shrub Swamp | Wooded Swamp Coniferous |
| Protected Open Space | SCR Identified Vernal Pools (Field Verified) | Cranberry Bog | Other | Wooded Swamp Deciduous |
| | Note: NHESP Potential Vernal Pools: NOT equivalent to Certified Vernal Pools | Deep Marsh | Deep Marsh | Wooded Swamp Mixed Trees |
| | | Salt Marsh | | |

Index Map

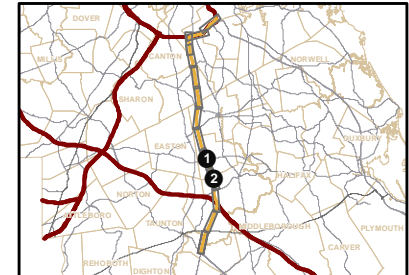
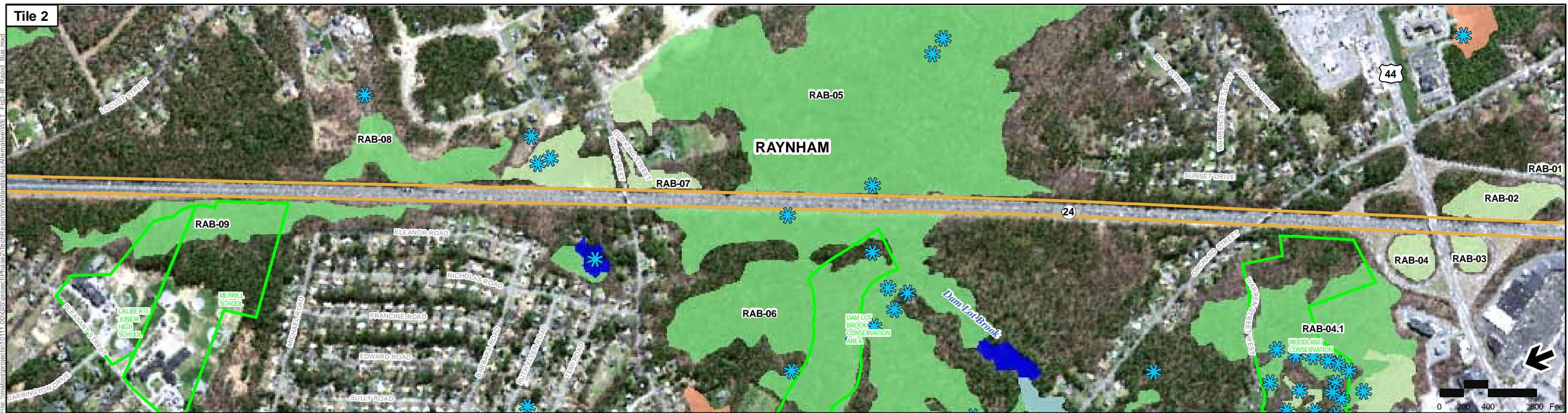


Figure 3-8e
Wetlands
Rapid Bus Alternative

Source: MassGIS, VHB
 Prepared by: VHB



Legend

- Proposed Alternative
- Proposed Station Locations
- Protected Open Space

- ★ NHESP Certified Vernal Pools
- ★ NHESP Potential Vernal Pools
- ★ SCR Identified Vernal Pools (Field Verified)

Note: NHESP Potential Vernal Pools: NOT equivalent to Certified Vernal Pools

Wetlands

- | | |
|---|--|
| ■ Open Water | ■ Shallow Marsh Meadow or Fen |
| ■ Bog | ■ Shrub Swamp |
| ■ Cranberry Bog | ■ Wooded Swamp Coniferous |
| ■ Other | ■ Wooded Swamp Deciduous |
| ■ Deep Marsh | ■ Wooded Swamp Mixed Trees |
| ■ Salt Marsh | |

Index Map

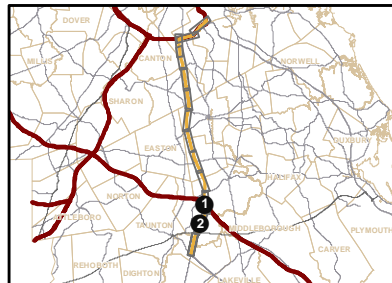


Figure 3-8f
Wetlands
Rapid Bus Alternative

Source: MassGIS
 Prepared by: VHB

Printing Date: 3/17/2009
 File: \\mabos\projects\101111_00\GIS\project\Phase2\Tochre\reports\Wetlands\Bus\Alternative\WET_Fig-8f_Rapid_Bus.mxd



Printing Date: 3/17/2009
 File: \\mabos\projects\10111_00\GIS\project\Phase2\Reports\Wetlands\BusAlternative\WETL_Figs-8g_Rapid_Bus.mxd

Legend

- Proposed Alternative
- Proposed Station Locations
- Protected Open Space

- ✱ NHESP Certified Vernal Pools
- ✱ NHESP Potential Vernal Pools
- ✱ SCR Identified Vernal Pools (Field Verified)

Note: NHESP Potential Vernal Pools: NOT equivalent to Certified Vernal Pools

Wetlands

- | | |
|---|--|
| Open Water | Shallow Marsh Meadow or Fen |
| Bog | Shrub Swamp |
| Cranberry Bog | Wooded Swamp Coniferous |
| Other | Wooded Swamp Deciduous |
| Deep Marsh | Wooded Swamp Mixed Trees |
| Salt Marsh | |

Index Map

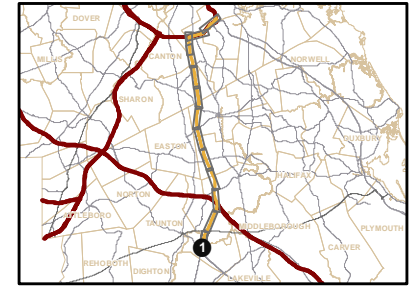


Figure 3-8g
Wetlands
Rapid Bus Alternative

Source: MassGIS, VHB
 Prepared by: VHB