

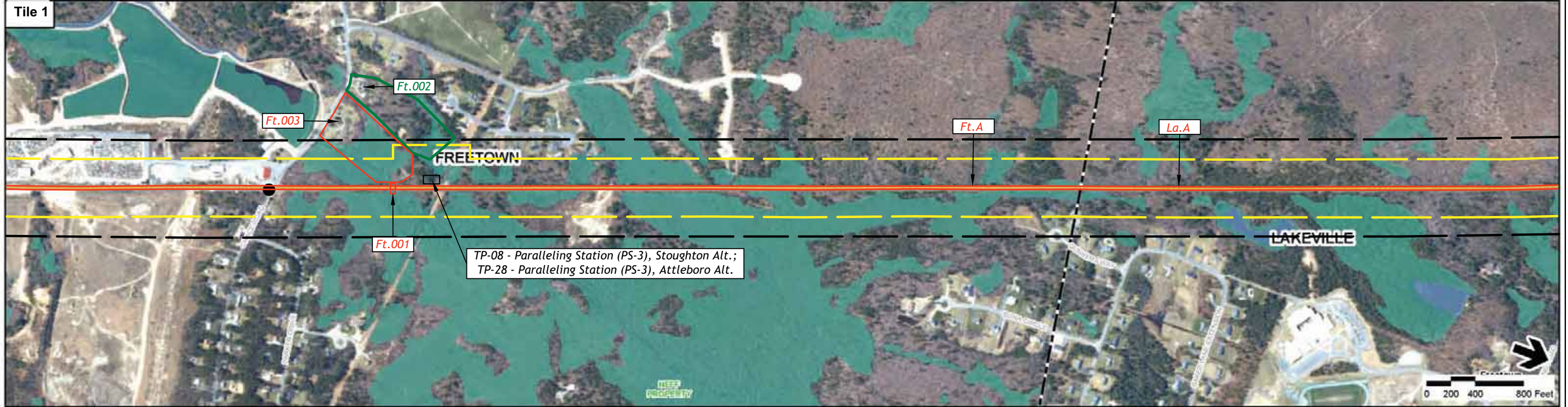
- Legend**
- Proposed Rail Alternative
 - DEP Wetlands
 - DEP Open Water
 - Grade Crossings
 - Proposed Station Site
 - Existing Layover Facilities
 - - - Town Boundaries
 - Area of Potential Effect for Above Ground Resources for the Diesel Option
 - Area of Potential Effect for Above Ground Resources for the Electric Option
 - Bo.001 Properties Recommended Eligible for National Register Listing
 - NB.052 Surveyed Properties Not Eligible for National Register Listing
 - NB.052 Properties Listed or Determined Eligible for Listing in the National Register of Historic Places, National Historic Landmarks, or Properties Listed in the State Register of Historic Places



Figure 4.8-1

Historic Resources-

New Bedford Main Line
to Weir Junction (Sheet 1 of 5)



- Legend**
- Proposed Rail Alternative
 - Area of Potential Effect for Above Ground Resources for the Diesel Option
 - Area of Potential Effect for Above Ground Resources for the Electric Option
 - Grade Crossings
 - DEP Wetlands
 - DEP Open Water
 - Proposed Station Site
 - Existing Layover Facilities
 - Town Boundaries
 - Properties Recommended Eligible for National Register Listing
 - Surveyed Properties Not Eligible for National Register Listing
 - Properties Listed or Determined Eligible for Listing in the National Register of Historic Places, National Historic Landmarks, or Properties Listed in the State Register of Historic Places

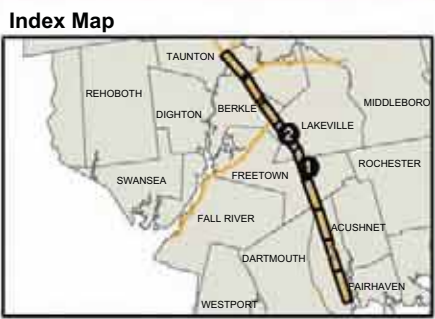
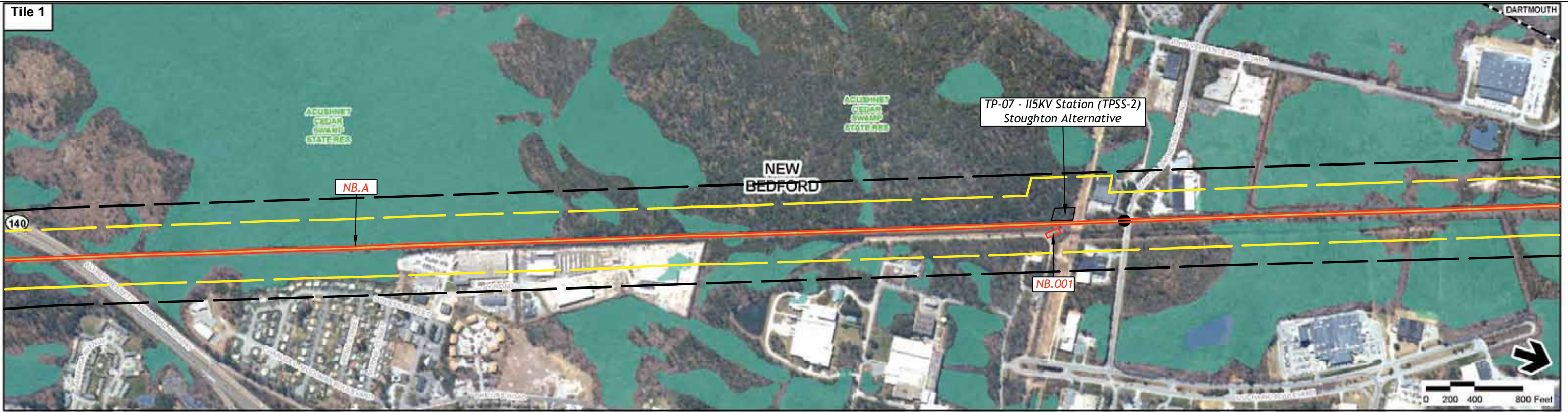


Figure 4.8-2

Historic Resources-

New Bedford Main Line
to Weir Junction (Sheet 2 of 5)

Tile 1



Tile 2



Legend

- Proposed Rail Alternative
- DEP Wetlands
- DEP Open Water
- Area of Potential Effect for Above Ground Resources for the Diesel Option
- Area of Potential Effect for Above Ground Resources for the Electric Option
- Grade Crossings
- Proposed Station Site
- Existing Layover Facilities
- Town Boundaries
- Bo.001 Properties Recommended Eligible for National Register Listing
- NB.052 Surveyed Properties Not Eligible for National Register Listing
- NB.052 Properties Listed or Determined Eligible for Listing in the National Register of Historic Places, National Historic Landmarks, or Properties Listed in the State Register of Historic Places

Index Map

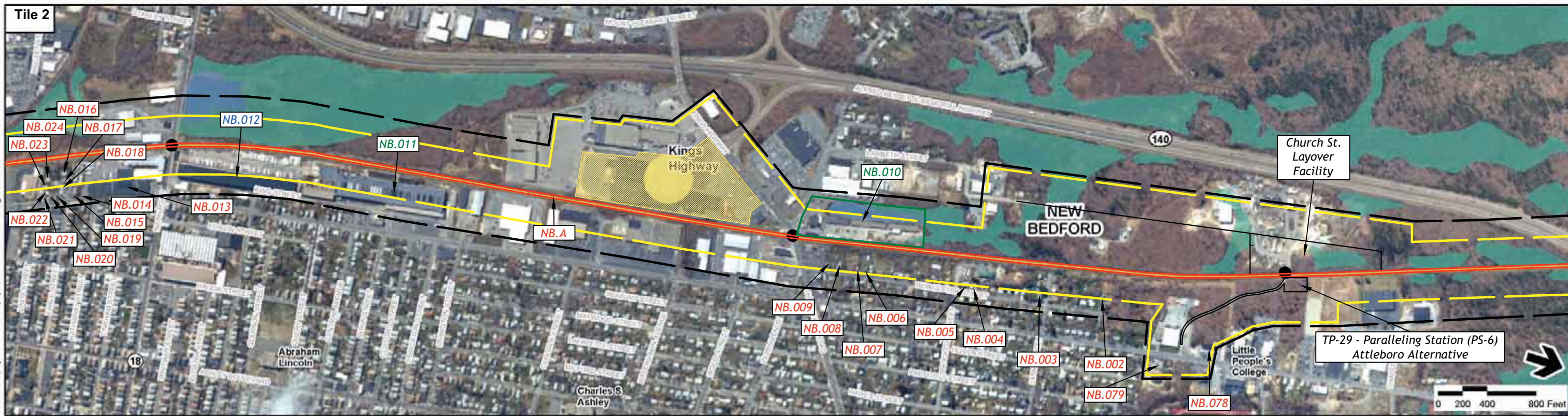
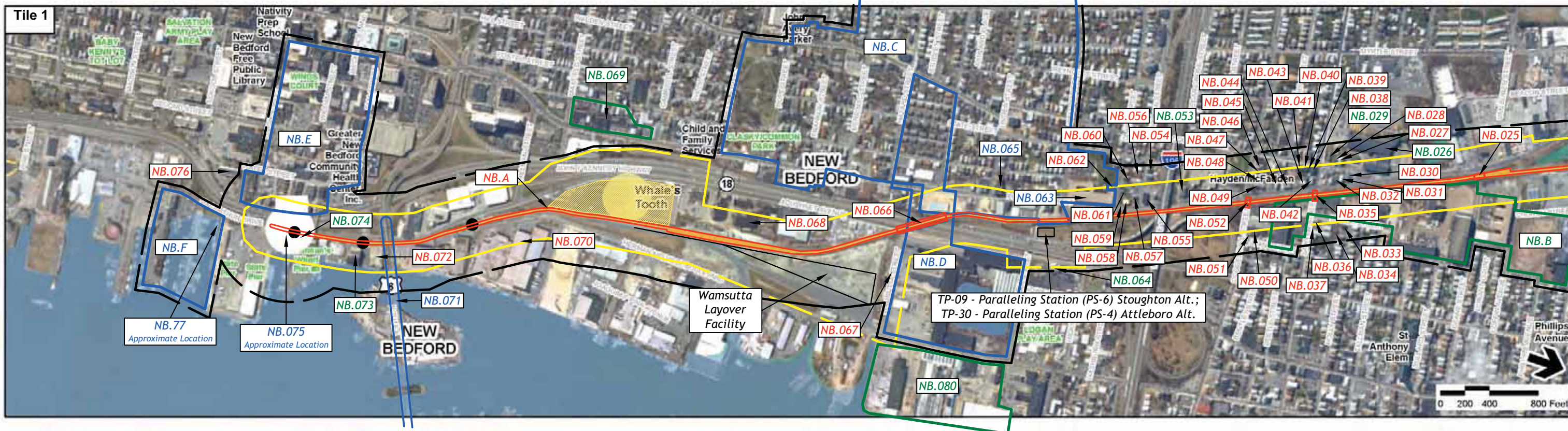


Figure 4.8-3

Historic Resources-

New Bedford Main Line to Weir Junction (Sheet 3 of 5)

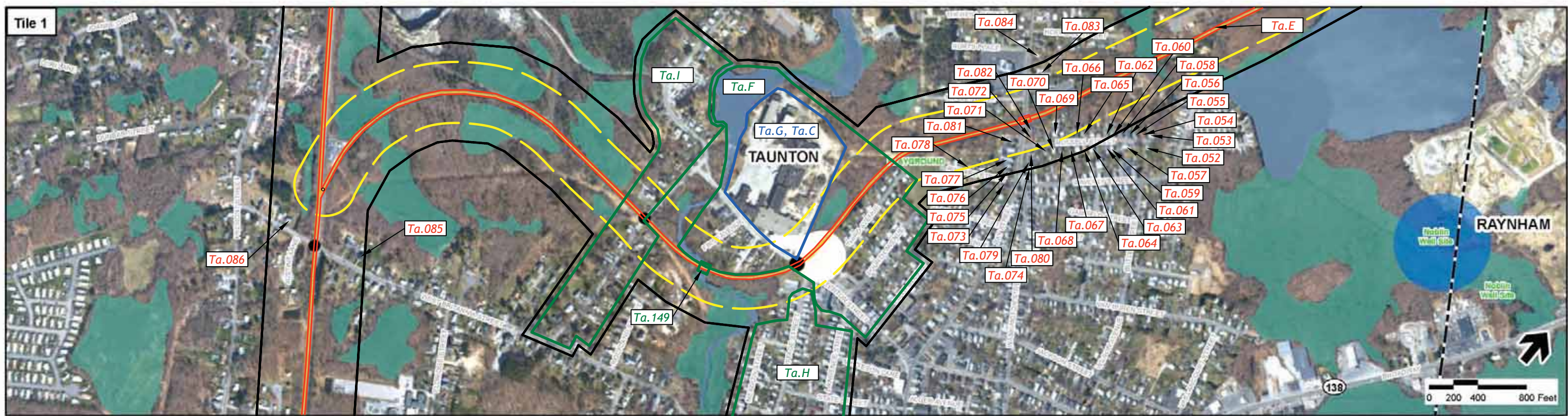
11/12/2008 File: \\mbrproj\project\10111_000\GIS\prop\ch\plans\2\Wetlands\NRT\TcL_Oct08.mxd



- Legend**
- Proposed Rail Alternative
 - DEP Wetlands
 - DEP Open Water
 - Grade Crossings
 - Proposed Station Site
 - Existing Layover Facilities
 - Town Boundaries
 - Area of Potential Effect for Above Ground Resources for the Diesel Option
 - Area of Potential Effect for Above Ground Resources for the Electric Option
 - Bo.001 → Properties Recommended Eligible for National Register Listing
 - NB.052 → Surveyed Properties Not Eligible for National Register Listing
 - NB.052 → Properties Listed or Determined Eligible for Listing in the National Register of Historic Places, National Historic Landmarks, or Properties Listed in the State Register of Historic Places



Figure 4.8-4
Historic Resources-
New Bedford Main Line
to Weir Junction (Sheet 4 of 5)



Legend

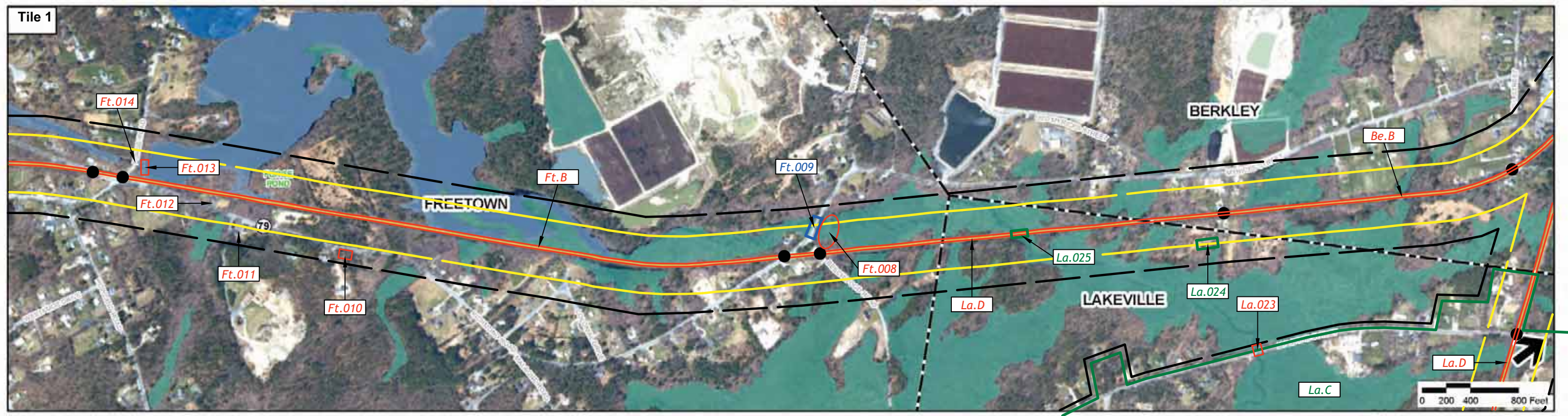
- Proposed Rail Alternative
- Grade Crossings
- Proposed Station Site
- Existing Layover Facilities
- Town Boundaries
- DEP Wetlands
- DEP Open Water
- Area of Potential Effect for Above Ground Resources for the Diesel Option
- Area of Potential Effect for Above Ground Resources for the Electric Option
- Bo.001 Properties Recommended Eligible for National Register Listing
- NB.052 Surveyed Properties Not Eligible for National Register Listing
- NB.052 Properties Listed or Determined Eligible for Listing in the National Register of Historic Places, National Historic Landmarks, or Properties Listed in the State Register of Historic Places

Index Map



Figure 4.8-5
Historic Resources-
New Bedford Main Line to Weir Junction
(Sheet 5 of 5)

Tile 1



11/13/2008 File: \\MapServer\project\Phase2\MapServer\Map1_Cut36.mxd

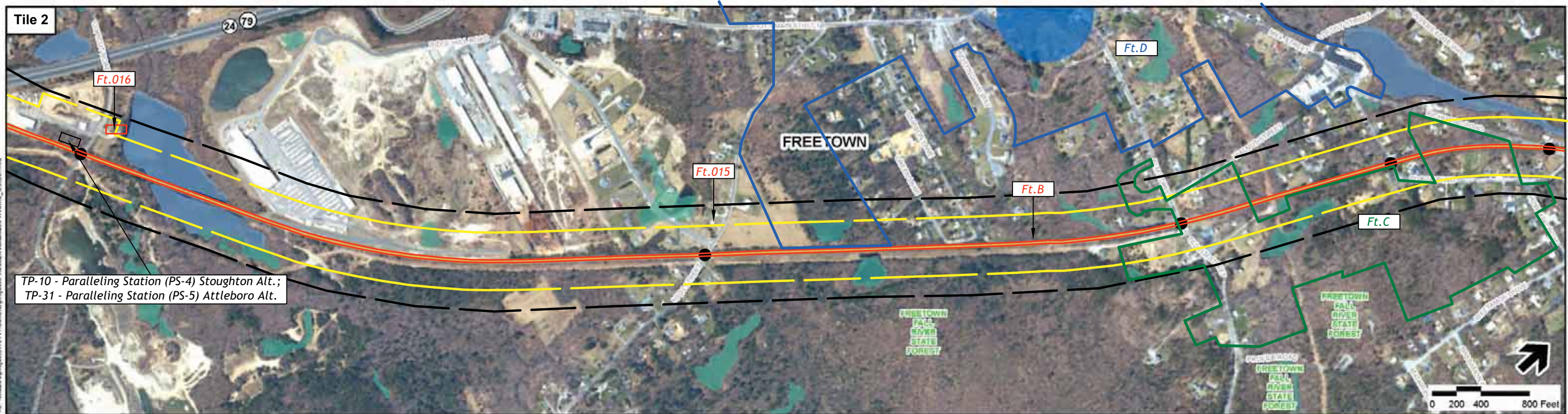
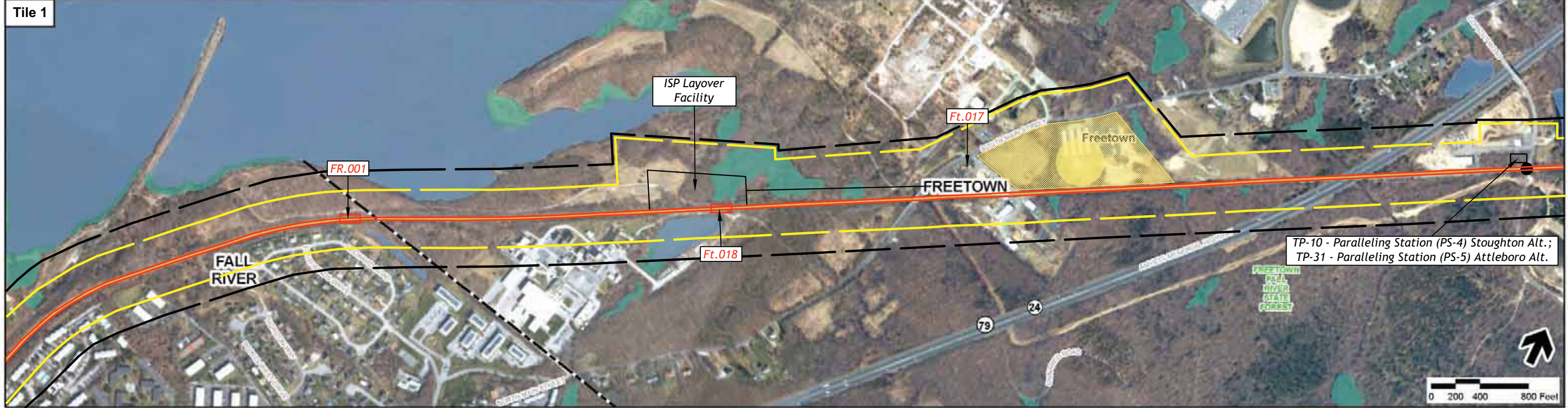
Legend

- Proposed Rail Alternative
- Grade Crossings
- Proposed Station Site
- Existing Layover Facilities
- Town Boundaries
- DEP Wetlands
- DEP Open Water
- Area of Potential Effect for Above Ground Resources for the Diesel Option
- Area of Potential Effect for Above Ground Resources for the Electric Option
- Bo.001 → Properties Recommended Eligible for National Register Listing
- NB.052 → Surveyed Properties Not Eligible for National Register Listing
- NB.052 → Properties Listed or Determined Eligible for Listing in the National Register of Historic Places, National Historic Landmarks, or Properties Listed in the State Register of Historic Places

Index Map



Figure 4.8-6
Historic Resources-
Fall River Secondary to Myricks
Junction (Sheet 1 of 3)



- Legend**
- Proposed Rail Alternative
 - DEP Wetlands
 - DEP Open Water
 - Grade Crossings
 - Proposed Station Site
 - Existing Layover Facilities
 - - - Town Boundaries
 - - - Area of Potential Effect for Above Ground Resources for the Diesel Option
 - - - Area of Potential Effect for Above Ground Resources for the Electric Option
 - Bo.001 → Properties Recommended Eligible for National Register Listing
 - NB.052 → Surveyed Properties Not Eligible for National Register Listing
 - NB.052 → Properties Listed or Determined Eligible for Listing in the National Register of Historic Places, National Historic Landmarks, or Properties Listed in the State Register of Historic Places



Figure 4.8-7
Historic Resources-
Fall River Secondary to Myricks
Junction (Sheet 2 of 3)

11/13/2008 File: \\labo\projects\101117_006\project\Phase2\lyr\attleboro\FR_001b.mxd



Legend

- Proposed Rail Alternative
- Grade Crossings
- Proposed Station Site
- Existing Layover Facilities
- Town Boundaries
- DEP Wetlands
- DEP Open Water
- Area of Potential Effect for Above Ground Resources for the Diesel Option
- Area of Potential Effect for Above Ground Resources for the Electric Option
- Bo.001 → Properties Recommended Eligible for National Register Listing
- NB.052 → Surveyed Properties Not Eligible for National Register Listing
- NB.052 → Properties Listed or Determined Eligible for Listing in the National Register of Historic Places, National Historic Landmarks, or Properties Listed in the State Register of Historic Places

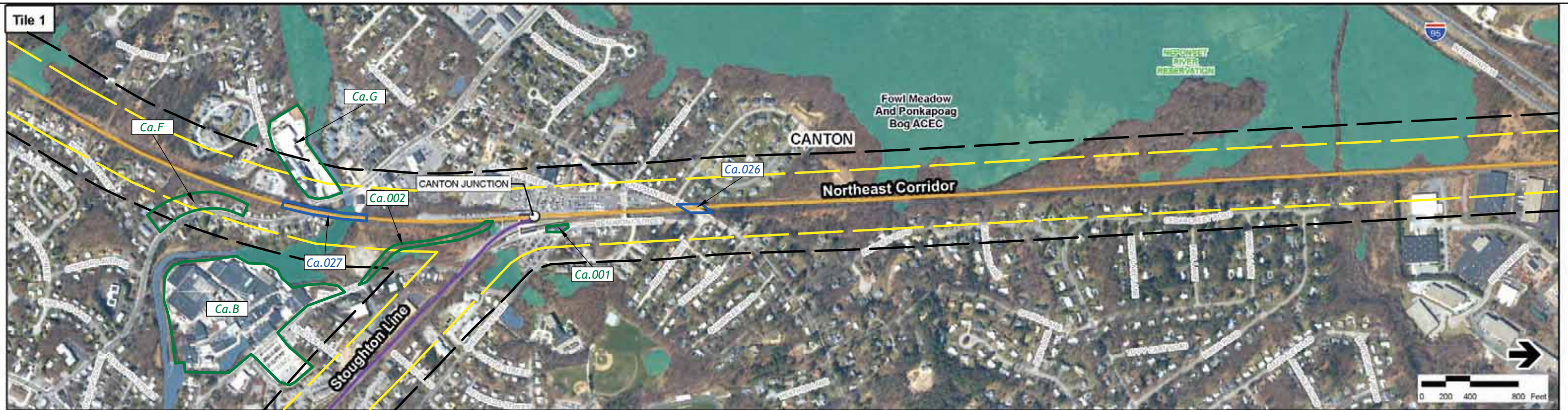
Index Map



Figure 4.8-9

Historic Resources-

Northeast Corridor (Sheet 1 of 5)



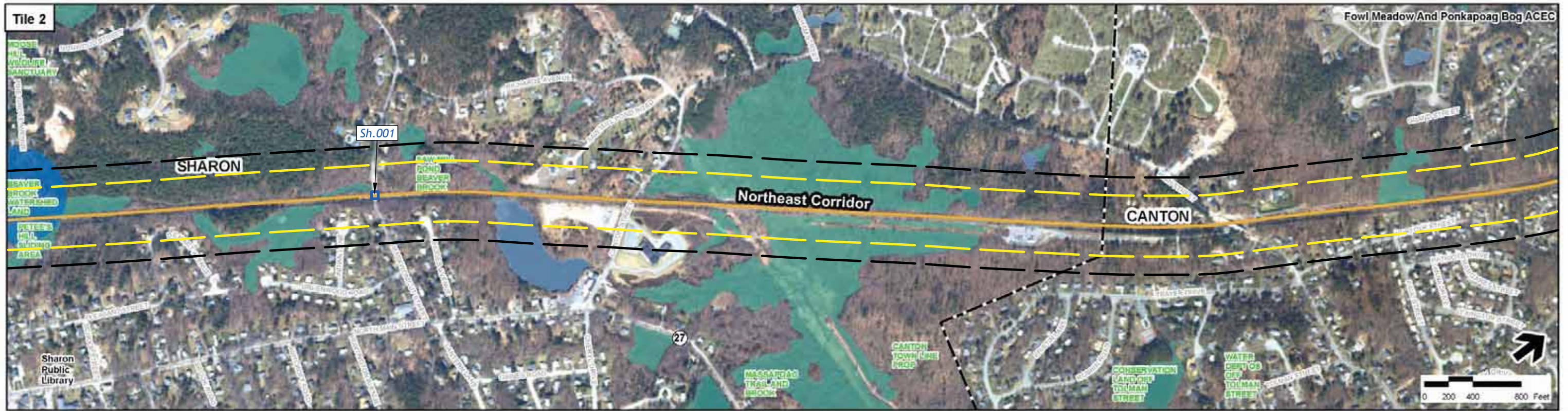
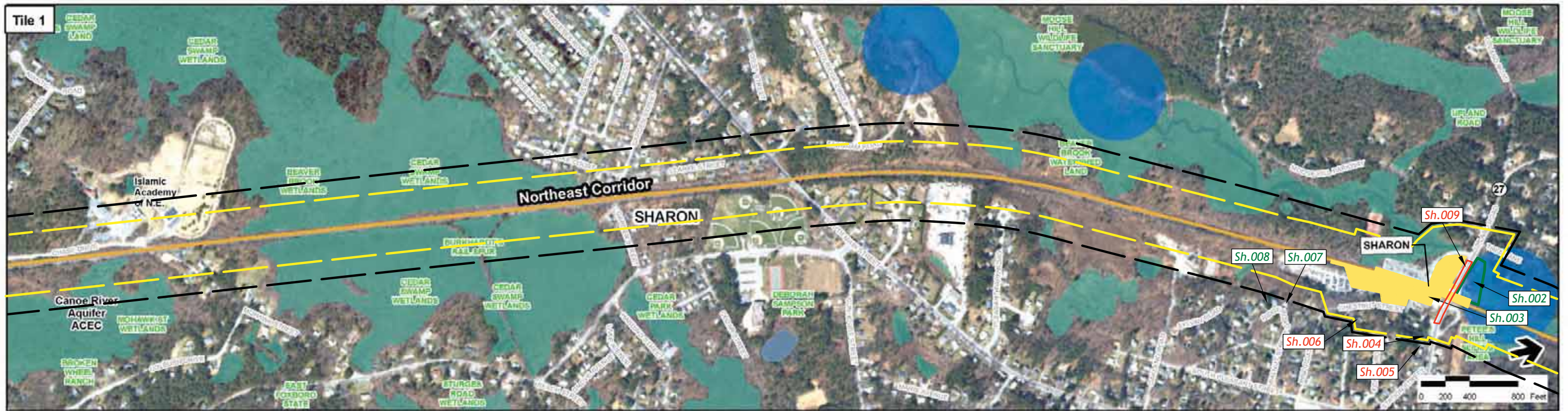
Legend

- Proposed Rail Alternative
- Grade Crossings
- Proposed Station Site
- Existing Layover Facilities
- Town Boundaries
- DEP Wetlands
- DEP Open Water
- Area of Potential Effect for Above Ground Resources for the Diesel Option
- Area of Potential Effect for Above Ground Resources for the Electric Option
- Bo.001 Properties Recommended Eligible for National Register Listing
- NB.052 Surveyed Properties Not Eligible for National Register Listing
- NB.052 Properties Listed or Determined Eligible for Listing in the National Register of Historic Places, National Historic Landmarks, or Properties Listed in the State Register of Historic Places

Index Map



Figure 4.8-10
Historic Resources-
Northeast Corridor (Sheet 2 of 5)



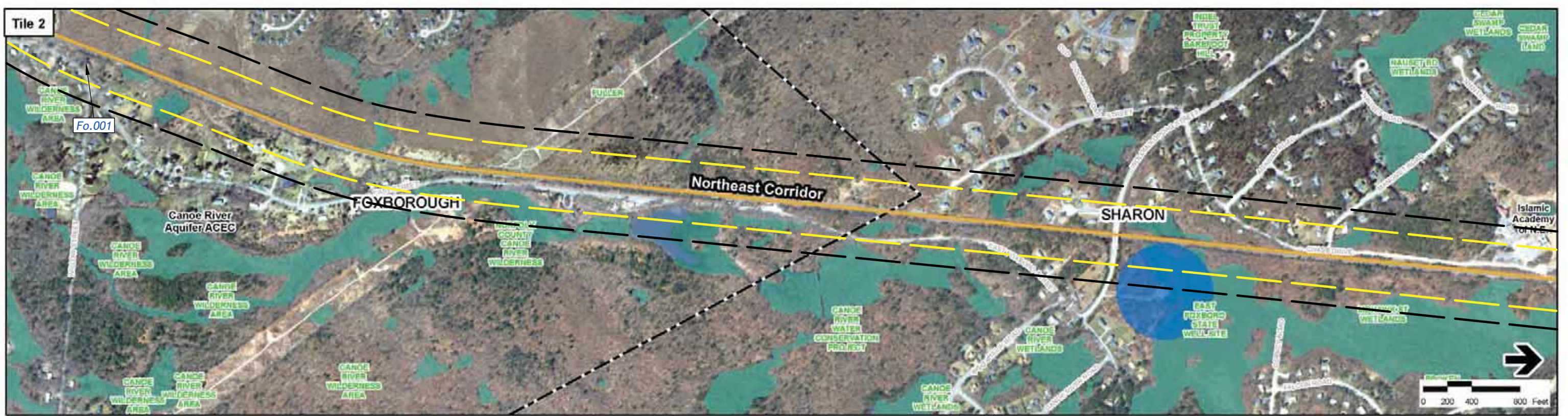
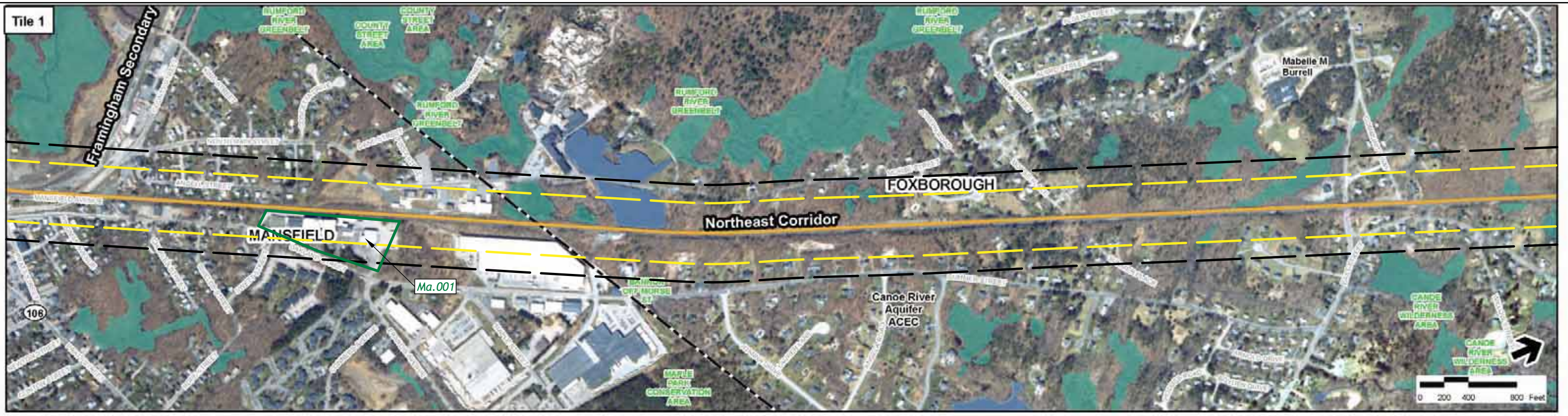
Legend

- Proposed Rail Alternative
- Grade Crossings
- Proposed Station Site
- Existing Layover Facilities
- Town Boundaries
- DEP Wetlands
- DEP Open Water
- Area of Potential Effect for Above Ground Resources for the Diesel Option
- Area of Potential Effect for Above Ground Resources for the Electric Option
- Bo.001 → Properties Recommended Eligible for National Register Listing
- NB.052 → Surveyed Properties Not Eligible for National Register Listing
- NB.052 → Properties Listed or Determined Eligible for Listing in the National Register of Historic Places, National Historic Landmarks, or Properties Listed in the State Register of Historic Places

Index Map



Figure 4.8-11
Historic Resources-
Northeast Corridor (Sheet 3 of 5)



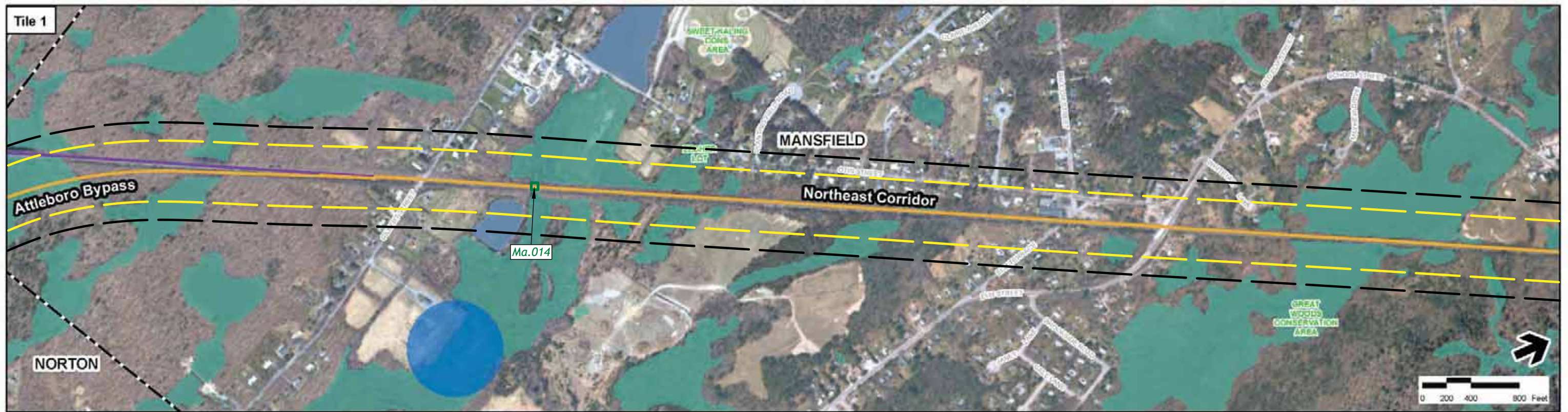
Legend

- Proposed Rail Alternative
- Grade Crossings
- Proposed Station Site
- Existing Layover Facilities
- Town Boundaries
- DEP Wetlands
- DEP Open Water
- Area of Potential Effect for Above Ground Resources for the Diesel Option
- Area of Potential Effect for Above Ground Resources for the Electric Option
- Bo.001** Properties Recommended Eligible for National Register Listing
- NB.052** Surveyed Properties Not Eligible for National Register Listing
- NB.052** Properties Listed or Determined Eligible for Listing in the National Register of Historic Places, National Historic Landmarks, or Properties Listed in the State Register of Historic Places

Index Map



Figure 4.8-12
Historic Resources-
Northeast Corridor (Sheet 4 of 5)



Legend

- Proposed Rail Alternative
- Area of Potential Effect for Above Ground Resources for the Diesel Option
- Area of Potential Effect for Above Ground Resources for the Electric Option
- DEP Wetlands
- DEP Open Water
- Grade Crossings
- Proposed Station Site
- Existing Layover Facilities
- Town Boundaries
- Properties Recommended Eligible for National Register Listing
- Surveyed Properties Not Eligible for National Register Listing
- Properties Listed or Determined Eligible for Listing in the National Register of Historic Places, National Historic Landmarks, or Properties Listed in the State Register of Historic Places

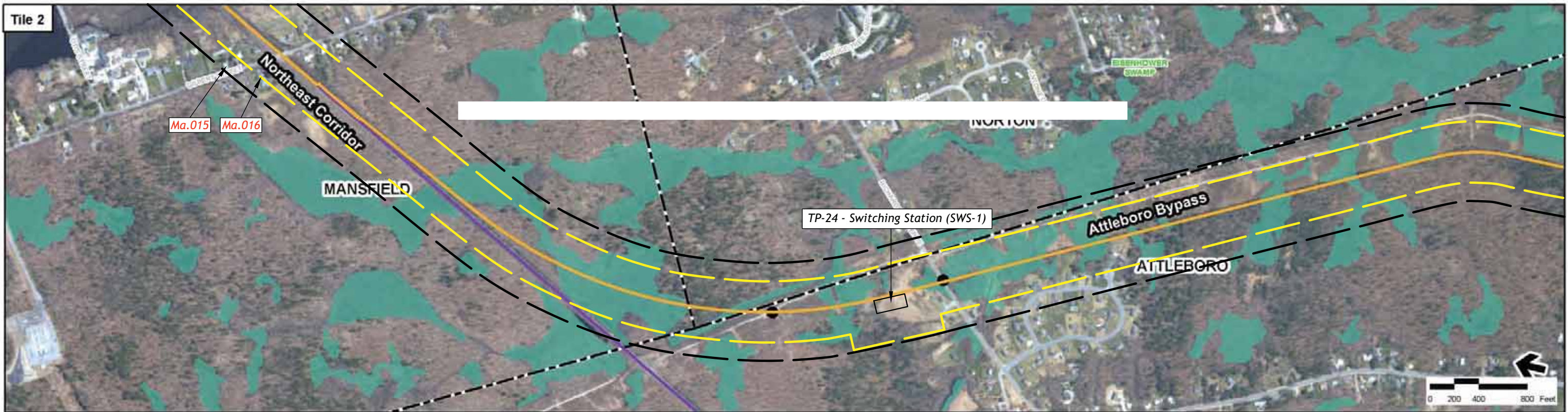
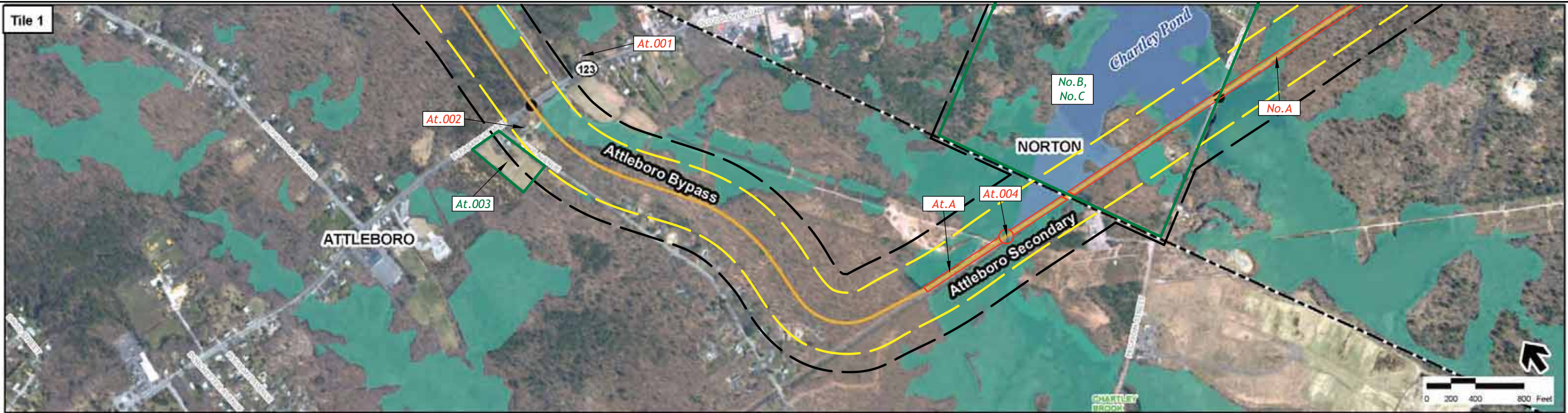
Index Map



Figure 4.8-13

Historic Resources-

Northeast Corridor (Sheet 5 of 5)



Legend

- Proposed Rail Alternative
- Grade Crossings
- Proposed Station Site
- Existing Layover Facilities
- Town Boundaries
- DEP Wetlands
- DEP Open Water
- Area of Potential Effect for Above Ground Resources for the Diesel Option
- Area of Potential Effect for Above Ground Resources for the Electric Option
- Bo.001 Properties Recommended Eligible for National Register Listing
- NB.052 Surveyed Properties Not Eligible for National Register Listing
- NB.052 Properties Listed or Determined Eligible for Listing in the National Register of Historic Places, National Historic Landmarks, or Properties Listed in the State Register of Historic Places

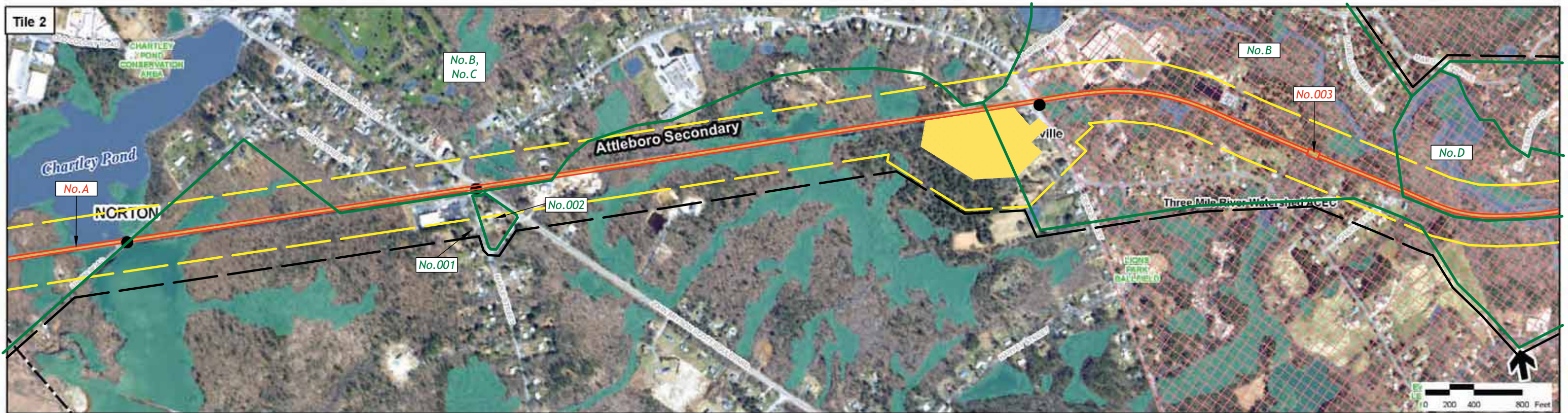
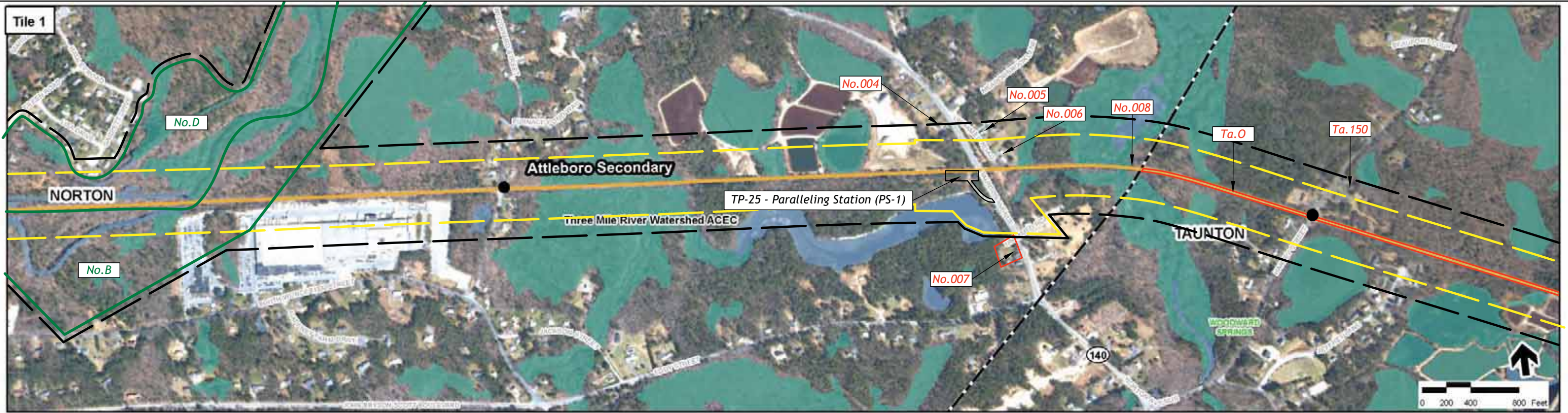
Index Map



Figure 4.8-14

Historic Resources-

Attleboro Secondary from Cotley Junction to Attleboro Bypass
(Sheet 1 of 3)



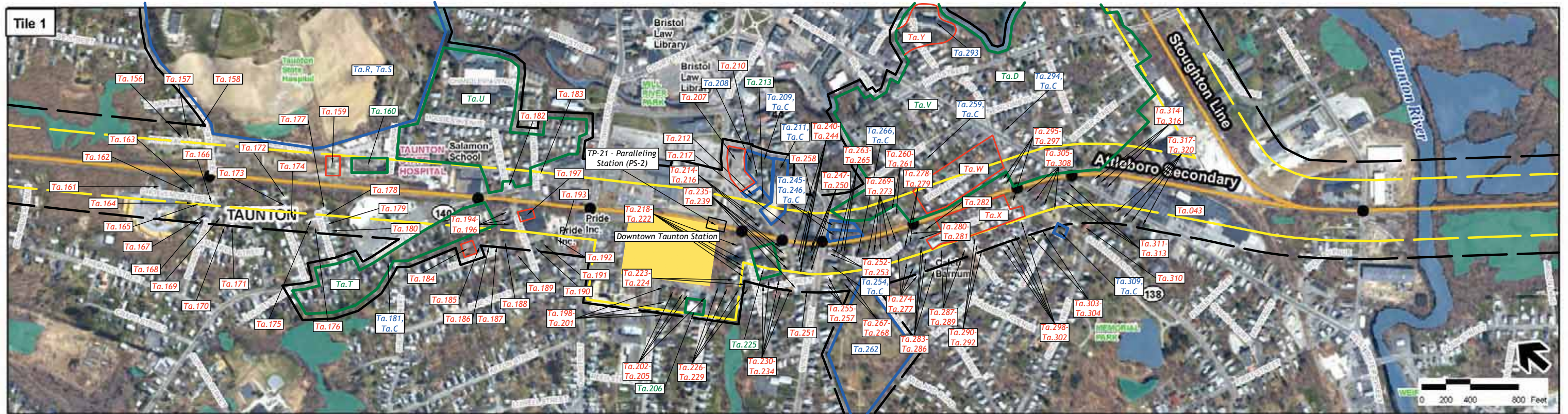
Legend

- Proposed Rail Alternative
- Grade Crossings
- Proposed Station Site
- Existing Layover Facilities
- Town Boundaries
- DEP Wetlands
- DEP Open Water
- Area of Potential Effect for Above Ground Resources for the Diesel Option
- Area of Potential Effect for Above Ground Resources for the Electric Option
- Bo.001 Properties Recommended Eligible for National Register Listing
- NB.052 Surveyed Properties Not Eligible for National Register Listing
- NB.052 Properties Listed or Determined Eligible for Listing in the National Register of Historic Places, National Historic Landmarks, or Properties Listed in the State Register of Historic Places

Index Map



Figure 4.8-15
Historic Resources-
Attleboro Secondary from Cotley
Junction to Attleboro Bypass
(Sheet 2 of 3)



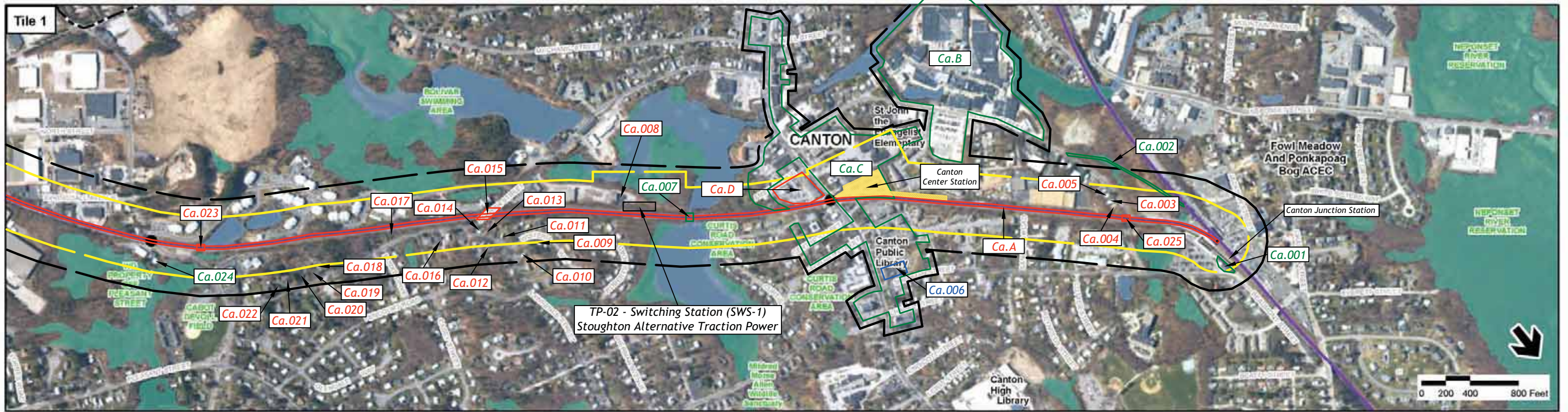
Legend

- Proposed Rail Alternative
- DEP Wetlands
- DEP Open Water
- Grade Crossings
- Proposed Station Site
- Existing Layover Facilities
- - - Town Boundaries
- Area of Potential Effect for Above Ground Resources for the Diesel Option
- Area of Potential Effect for Above Ground Resources for the Electric Option
- Bo.001 → Properties Recommended Eligible for National Register Listing
- NB.052 → Surveyed Properties Not Eligible for National Register Listing
- NB.052 → Properties Listed or Determined Eligible for Listing in the National Register of Historic Places, National Historic Landmarks, or Properties Listed in the State Register of Historic Places

Index Map



Figure 4.8-16
Historic Resources-
Attleboro Secondary from Cotley Junction to Attleboro Bypass
(Sheet 3 of 3)



11/19/2008 File: \\hahay\proj\111111_001\GIS\Map\111111_001\Map\111111_001\Map\111111_001\Map\111111_001.mxd

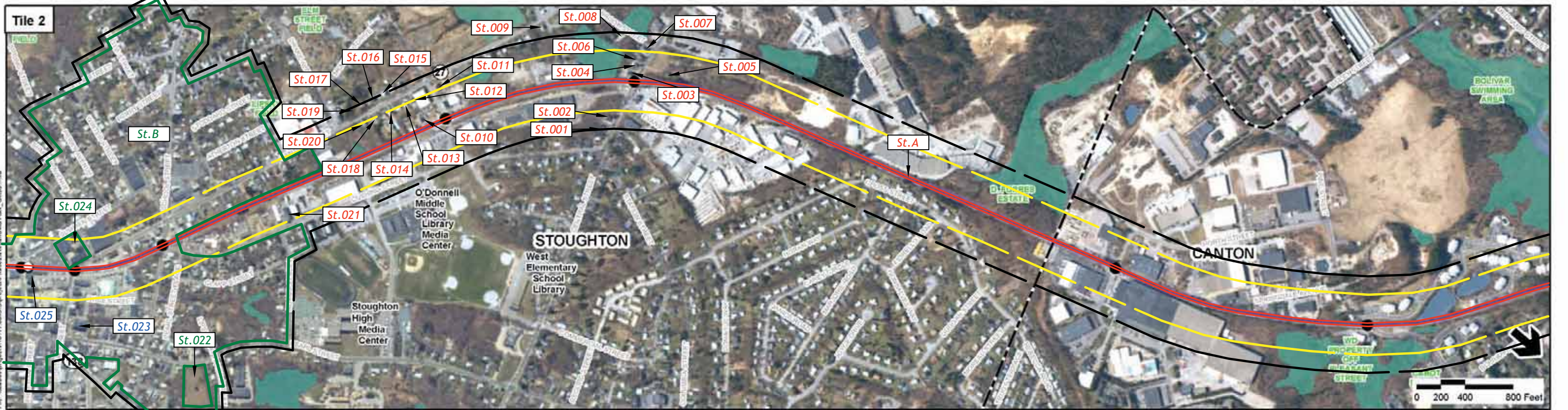
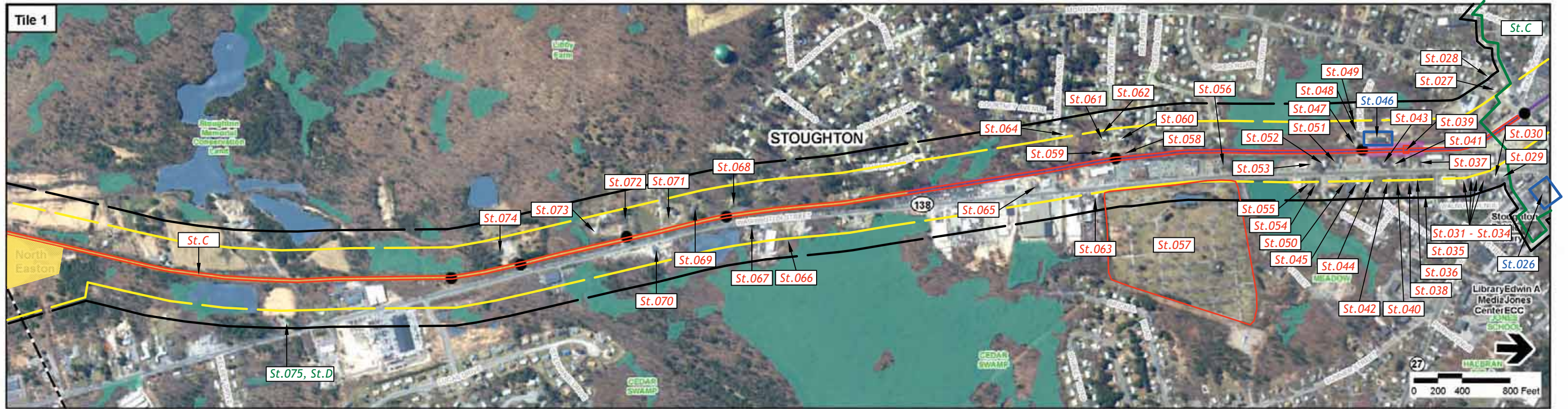
Legend

- Proposed Rail Alternative
- Grade Crossings
- Proposed Station Site
- Existing Layover Facilities
- Town Boundaries
- DEP Wetlands
- DEP Open Water
- Area of Potential Effect for Above Ground Resources for the Diesel Option
- Area of Potential Effect for Above Ground Resources for the Electric Option
- Bo.001 Properties Recommended Eligible for National Register Listing
- NB.052 Surveyed Properties Not Eligible for National Register Listing
- NB.052 Properties Listed or Determined Eligible for Listing in the National Register of Historic Places, National Historic Landmarks, or Properties Listed in the State Register of Historic Places

Index Map



Figure 4.8-17
Historic Resources-
Weir Junction to Canton Junction,
Stoughton Line
(Sheet 1 of 6)



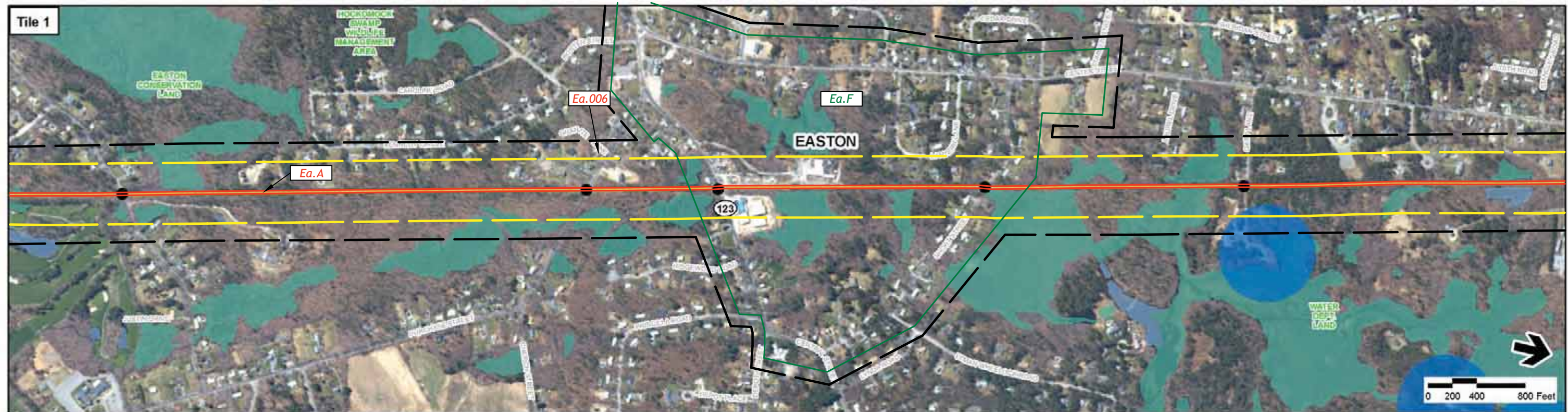
Legend

- Proposed Rail Alternative
- Grade Crossings
- Proposed Station Site
- Existing Layover Facilities
- Town Boundaries
- DEP Wetlands
- DEP Open Water
- Area of Potential Effect for Above Ground Resources for the Diesel Option
- Area of Potential Effect for Above Ground Resources for the Electric Option
- Bo.001 Properties Recommended Eligible for National Register Listing
- NB.052 Surveyed Properties Not Eligible for National Register Listing
- NB.052 Properties Listed or Determined Eligible for Listing in the National Register of Historic Places, National Historic Landmarks, or Properties Listed in the State Register of Historic Places

Index Map



Figure 4.8-18
Historic Resources-
Weir Junction to Canton Junction,
Stoughton Line
(Sheet 2 of 6)



Legend

- Proposed Rail Alternative
- Grade Crossings
- Proposed Station Site
- Existing Layover Facilities
- Town Boundaries
- DEP Wetlands
- DEP Open Water
- Area of Potential Effect for Above Ground Resources for the Diesel Option
- Area of Potential Effect for Above Ground Resources for the Electric Option
- Properties Recommended Eligible for National Register Listing
- Surveyed Properties Not Eligible for National Register Listing
- Properties Listed or Determined Eligible for Listing in the National Register of Historic Places, National Historic Landmarks, or Properties Listed in the State Register of Historic Places

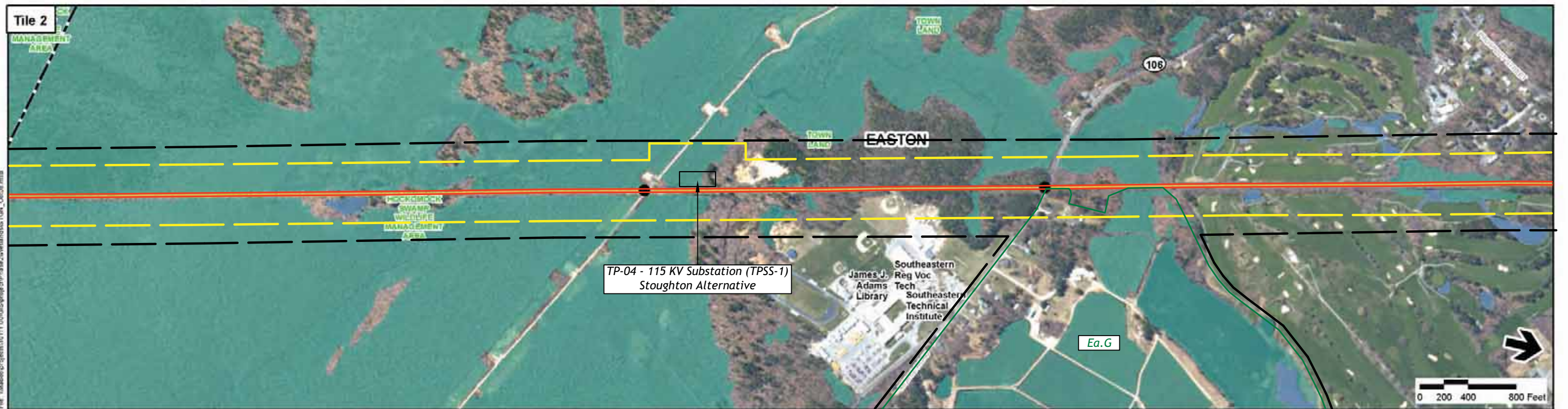
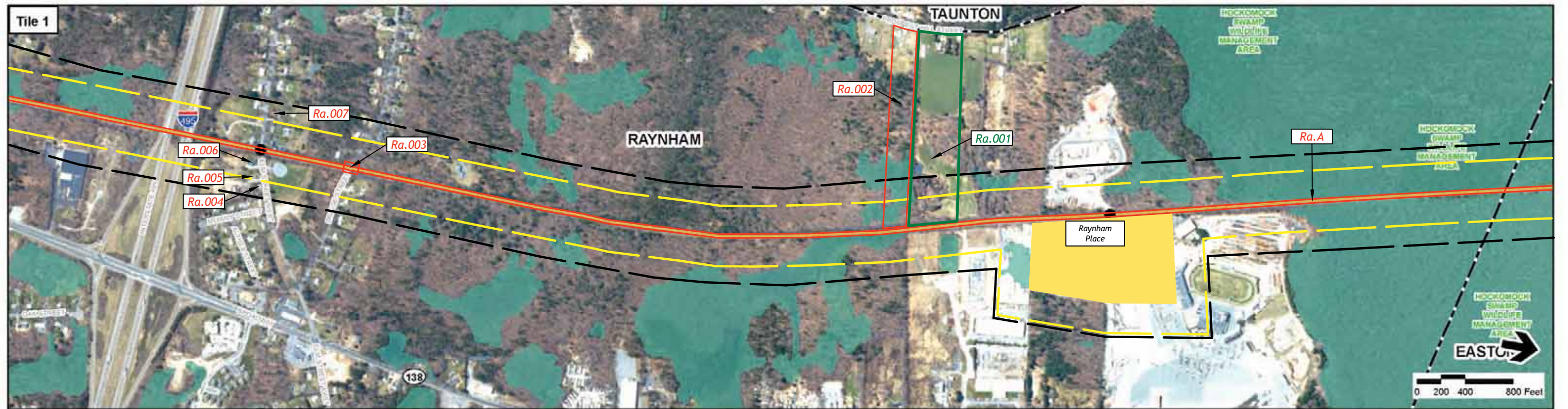
Index Map



Figure 4.8-19

Historic Resources-

Weir Junction to Canton Junction,
Stoughton Line
(Sheet 3 of 6)



11/12/2008 File: \\mass.gov\proj\110111_000\GIS\proj\110111_000\MapServer\themes\stoughton\Out08.mxd

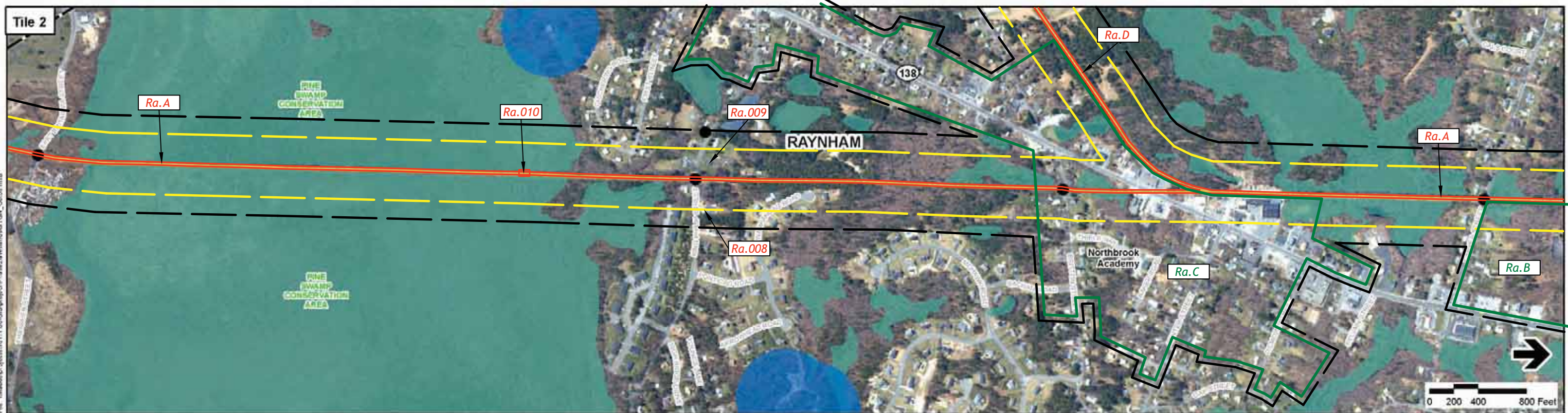
Legend

- Proposed Rail Alternative
- Grade Crossings
- Proposed Station Site
- Existing Layover Facilities
- Town Boundaries
- DEP Wetlands
- DEP Open Water
- Area of Potential Effect for Above Ground Resources for the Diesel Option
- Area of Potential Effect for Above Ground Resources for the Electric Option
- Bo.001 Properties Recommended Eligible for National Register Listing
- NB.052 Surveyed Properties Not Eligible for National Register Listing
- NB.052 Properties Listed or Determined Eligible for Listing in the National Register of Historic Places, National Historic Landmarks, or Properties Listed in the State Register of Historic Places

Index Map



Figure 4.8-20
Historic Resources-
Weir Junction to Canton Junction,
Stoughton Line
(Sheet 4 of 6)



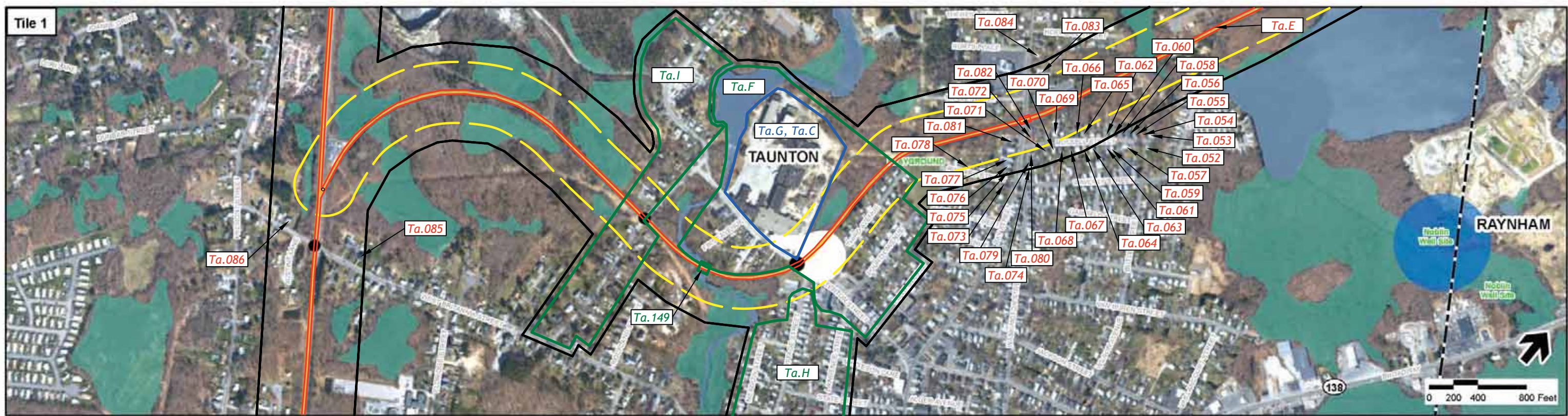
Legend

- Proposed Rail Alternative
- DEP Wetlands
- DEP Open Water
- Grade Crossings
- Proposed Station Site
- Existing Layover Facilities
- Town Boundaries
- Area of Potential Effect for Above Ground Resources for the Diesel Option
- Area of Potential Effect for Above Ground Resources for the Electric Option
- Bo.001 Properties Recommended Eligible for National Register Listing
- NB.052 Surveyed Properties Not Eligible for National Register Listing
- NB.052 Properties Listed or Determined Eligible for Listing in the National Register of Historic Places, National Historic Landmarks, or Properties Listed in the State Register of Historic Places

Index Map



Figure 4.8-21
 Historic Resources-
 Weir Junction to Canton Junction,
 Stoughton Line
 (Sheet 5 of 6)



Legend

- Proposed Rail Alternative
- Grade Crossings
- Proposed Station Site
- Existing Layover Facilities
- Town Boundaries
- DEP Wetlands
- DEP Open Water
- Area of Potential Effect for Above Ground Resources for the Diesel Option
- Area of Potential Effect for Above Ground Resources for the Electric Option
- Bo.001 Properties Recommended Eligible for National Register Listing
- NB.052 Surveyed Properties Not Eligible for National Register Listing
- NB.052 Properties Listed or Determined Eligible for Listing in the National Register of Historic Places, National Historic Landmarks, or Properties Listed in the State Register of Historic Places

Index Map



Figure 4.8-22

Historic Resources-

Weir Junction to Canton Junction,
Stoughton Line
(Sheet 6 of 6)



Legend

- Rapid Bus Alternative
- Grade Crossings
- Proposed Station Site
- Existing Layover Facilities
- Town Boundaries
- DEP Wetlands
- DEP Open Water
- Area of Potential Effect for Above Ground Resources
- Bo.001 → □ Properties Recommended Eligible for National Register Listing
- NB.052 → □ Surveyed Properties Not Eligible for National Register Listing
- NB.052 → □ Properties Listed or Determined Eligible for Listing in the National Register of Historic Places, National Historic Landmarks, or Properties Listed in the State Register of Historic Places

Index Map



Figure 4.8-23
Historic Resources-
Rapid Bus Alternative (Sheet 1 of 7)



Legend

- Rapid Bus Alternative
- Grade Crossings
- Proposed Station Site
- Existing Layover Facilities
- Town Boundaries
- DEP Wetlands
- DEP Open Water
- Area of Potential Effect for Above Ground Resources
- Bo.001 Properties Recommended Eligible for National Register Listing
- NB.052 Surveyed Properties Not Eligible for National Register Listing
- NB.052 Properties Listed or Determined Eligible for Listing in the National Register of Historic Places, National Historic Landmarks, or Properties Listed in the State Register of Historic Places












Index Map



Figure 4.8-24
Historic Resources-
Rapid Bus Alternative
(Sheet 2 of 7)



Legend

-  Rapid Bus Alternative
-  Grade Crossings
-  Proposed Station Site
-  Existing Layover Facilities
-  Town Boundaries
-  DEP Wetlands
-  DEP Open Water
-  Area of Potential Effect for Above Ground Resources
-  **Bo.001** Properties Recommended Eligible for National Register Listing
-  **NB.052** Surveyed Properties Not Eligible for National Register Listing
-  **NB.052** Properties Listed or Determined Eligible for Listing in the National Register of Historic Places, National Historic Landmarks, or Properties Listed in the State Register of Historic Places

Index Map



Figure 4.8-25
Historic Resources-
Rapid Bus Alternative
(Sheet 3 of 7)



Legend

- Rapid Bus Alternative
- Grade Crossings
- Proposed Station Site
- Existing Layover Facilities
- Town Boundaries
- DEP Wetlands
- DEP Open Water
- Area of Potential Effect for Above Ground Resources
- Bo.001 → Properties Recommended Eligible for National Register Listing
- NB.052 → Surveyed Properties Not Eligible for National Register Listing
- NB.052 → Properties Listed or Determined Eligible for Listing in the National Register of Historic Places, National Historic Landmarks, or Properties Listed in the State Register of Historic Places

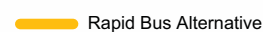

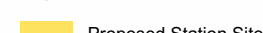

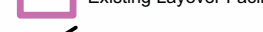


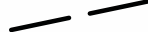

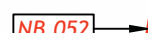
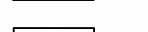
Index Map



Figure 4.8-26
Historic Resources-
Rapid Bus Alternative
(Sheet 4 of 7)



Legend

-  Rapid Bus Alternative
-  Grade Crossings
-  Proposed Station Site
-  Existing Layover Facilities
-  Town Boundaries
-  DEP Wetlands
-  DEP Open Water
-  Area of Potential Effect for Above Ground Resources
-  Bo.001 Properties Recommended Eligible for National Register Listing
-  NB.052 Surveyed Properties Not Eligible for National Register Listing
-  NB.052 Properties Listed or Determined Eligible for Listing in the National Register of Historic Places, National Historic Landmarks, or Properties Listed in the State Register of Historic Places

Index Map



Figure 4.8-27
Historic Resources-
Rapid Bus Alternative
(Sheet 5 of 7)



Legend

- Rapid Bus Alternative
- Grade Crossings
- Proposed Station Site
- Existing Layover Facilities
- Town Boundaries
- DEP Wetlands
- DEP Open Water
- Area of Potential Effect for Above Ground Resources
- Bo.001 Properties Recommended Eligible for National Register Listing
- NB.052 Surveyed Properties Not Eligible for National Register Listing
- NB.052 Properties Listed or Determined Eligible for Listing in the National Register of Historic Places, National Historic Landmarks, or Properties Listed in the State Register of Historic Places

Index Map



Figure 4.8-28

Historic Resources-

Rapid Bus Alternative
(Sheet 6 of 7)



Legend

- Rapid Bus Alternative
- DEP Wetlands
- DEP Open Water
- Grade Crossings
- Proposed Station Site
- Existing Layover Facilities
- Town Boundaries
- Area of Potential Effect for Above Ground Resources
- Properties Recommended Eligible for National Register Listing
- Surveyed Properties Not Eligible for National Register Listing
- Properties Listed or Determined Eligible for Listing in the National Register of Historic Places, National Historic Landmarks, or Properties Listed in the State Register of Historic Places

Index Map



Figure 4.8-29
Historic Resources-
Rapid Bus Alternative
(Sheet 7 of 7)