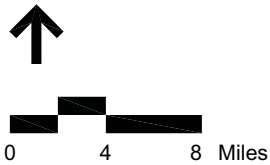


\\mabos\projects\10111.00\gis\output\Phase2\TechReports\Vibration\10111\_Vibration\_Fig2-2.dwg Printing Date: 12/14/2009

Figure 4.7-2  
Vibration Measurement Locations





- Legend**
- MBTA Commuter Rail Station
  - MBTA Commuter Rail
  - - - Town Boundaries
  - Proposed Alternative Alignment
  - ▭ Limit of Work for Proposed Station
  - ▭ Limit of Permanent Impact for Proposed Rail
  - ▭ Traction Power Station\*
  - Location of Vibration Impacted Receptor
  - Schools

\* Traction power stations are only required for electric rail alternative

**Index Map**

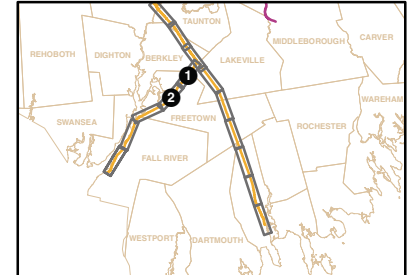


Figure 4.7-5a  
All Rail Alternatives -  
Fall River Secondary  
Vibration Impacted Receptors

Printing Date: 6/23/2009  
 File: \\mabos\projects\10111\GIS\project\Phase2\TechReports\Vibration\EC\AllRail\_Vibration\_FallRiver\_Page1.mxd



- Legend**
- MBTA Commuter Rail Station
  - MBTA Commuter Rail
  - - - Town Boundaries
  - Proposed Alternative Alignment
  - ▭ Limit of Work for Proposed Station
  - ▭ Limit of Permanent Impact for Proposed Rail
  - ▭ Traction Power Station\*
  - Location of Vibration Impacted Receptor
  - Schools

\* Traction power stations are only required for electric rail alternative

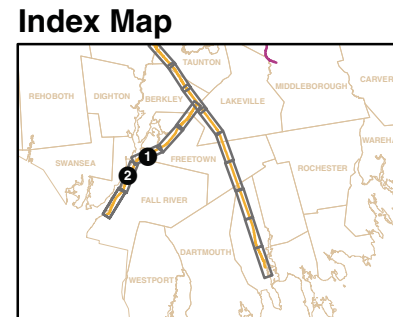


Figure 4.7-5b

All Rail Alternatives -  
Fall River Secondary  
Vibration Impacted Receptors

Printing Date: 6/23/2009  
 File: \\mabos\projects\10111\GIS\project\Phase2\TechReports\Vibration\EC\AllRail\_Vibration\_FallRiver\_Page2.mxd



Printing Date: 6/23/2009  
 File: \\mabos\projects\10111.00\GIS\project\Phase2\TechReports\Vibration\EC\AllRail\_Vibration\_FallRiver\_Page3.mxd

**Legend**

- MBTA Commuter Rail Station
- MBTA Commuter Rail
- - - Town Boundaries
- Proposed Alternative Alignment
- ▭ Limit of Work for Proposed Station
- ▭ Limit of Permanent Impact for Proposed Rail
- ▭ Traction Power Station\*
- Location of Vibration Impacted Receptor
- Schools

\* Traction power stations are only required for electric rail alternative

**Index Map**

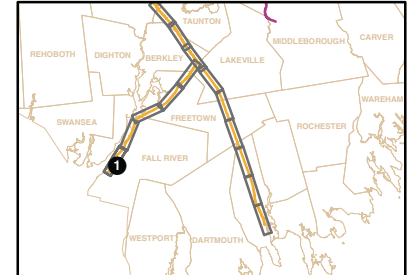
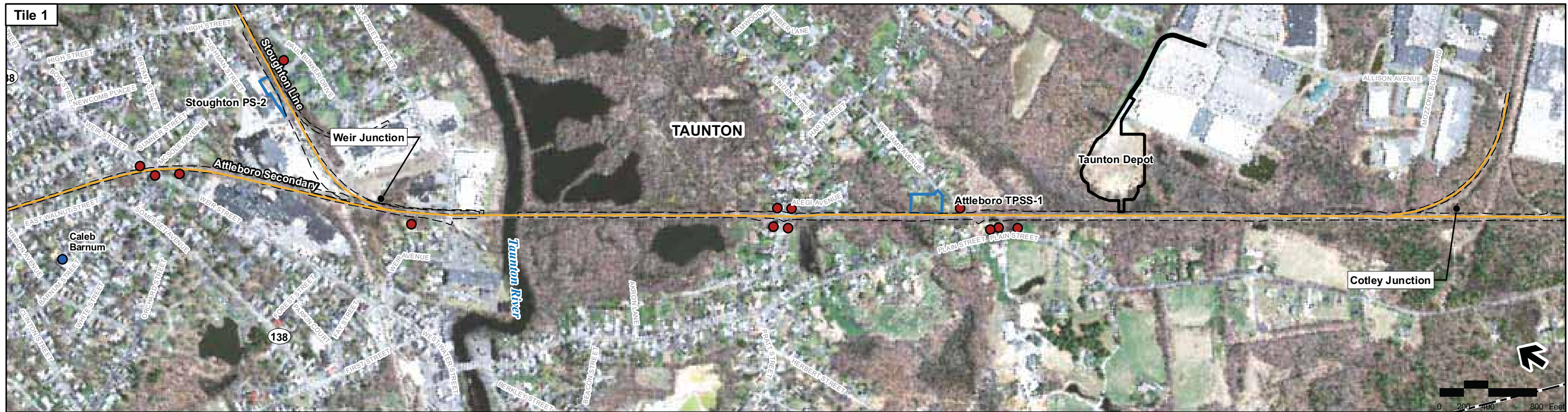


Figure 4.7-5c  
  
 All Rail Alternatives -  
 Fall River Secondary  
 Vibration Impacted Receptors



Printing Date: 6/23/2009  
 File: \\mbos\projects\10111\_00\GIS\project\Phase2\TechReports\Rail\_Vibration\EC\Rail\_Vibration\_NewBedford\_Page1.mxd

- Legend**
- MBTA Commuter Rail Station
  - MBTA Commuter Rail
  - - - Town Boundaries
  - Proposed Alternative Alignment
  - ▭ Limit of Work for Proposed Station
  - ▭ Limit of Permanent Impact for Proposed Rail
  - ▭ Traction Power Station\*
  - Location of Vibration Impacted Receptor
  - Schools

\* Traction power stations are only required for electric rail alternative

**Index Map**

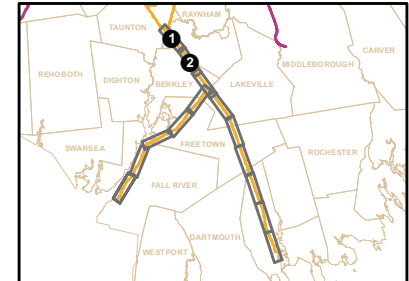


Figure 4.7-6a  
 All Rail Alternatives -  
 New Bedford Main Line  
 Vibration Impacted Receptors



Printing Date: 6/23/2009  
 File: \\mabos\projects\Phase2\TechReports\Vibration\EC\AllRail\_Vibration\_NewBedford\_Page2.mxd

**Legend**

- MBTA Commuter Rail Station
- MBTA Commuter Rail
- Town Boundaries
- Proposed Alternative Alignment
- ▭ Limit of Work for Proposed Station
- ▭ Limit of Permanent Impact for Proposed Rail
- ▭ Traction Power Station\*
- Location of Vibration Impacted Receptor
- Schools

\* Traction power stations are only required for electric rail alternative

**Index Map**

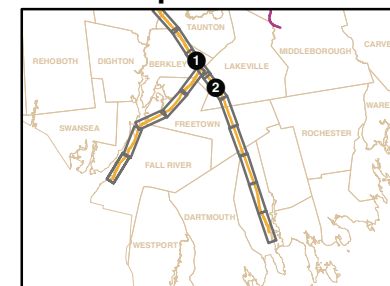


Figure 4.7-6b

All Rail Alternatives -  
 New Bedford Main Line  
 Vibration Impacted Receptors



Printing Date: 6/23/2009  
 File: \\mabos\projects\10111.00\GIS\project\Phase2\TechReports\Vibration\EC\AllRail\_Vibration\_NewBedford\_Page3.mxd

**Legend**

- MBTA Commuter Rail Station
- MBTA Commuter Rail
- Town Boundaries
- Proposed Alternative Alignment
- ▭ Limit of Work for Proposed Station
- ▭ Limit of Permanent Impact for Proposed Rail
- ▭ Traction Power Station\*
- Location of Vibration Impacted Receptor
- Schools

\* Traction power stations are only required for electric rail alternative

**Index Map**

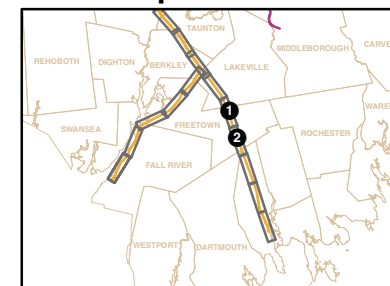


Figure 4.7-6c  
 All Rail Alternatives -  
 New Bedford Main Line  
 Vibration Impacted Receptors



- Legend**
- MBTA Commuter Rail Station
  - MBTA Commuter Rail
  - - - Town Boundaries
  - Proposed Alternative Alignment
  - ▭ Limit of Work for Proposed Station
  - ▭ Limit of Permanent Impact for Proposed Rail
  - ▭ Traction Power Station\*

- Location of Vibration Impacted Receptor
- Schools

\* Traction power stations are only required for electric rail alternative

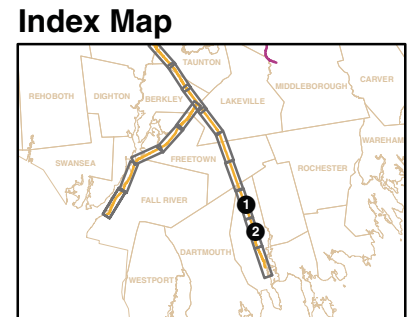


Figure 4.7-6d

All Rail Alternatives -  
New Bedford Main Line

Vibration Impacted Receptors

Printing Date: 6/23/2009  
 File: \\mabos\projects\101111\GIS\project\Phase2\TechReports\Vibration\EC\AllRail\_Vibration\_NewBedford\_Page4.mxd





Printing Date: 6/23/2009  
 File: \\mabos\projects\10111.00\GIS\project\Phase2\TechReports\Vibration\EC\AllRail\_Vibration\_NewBedford\_Page5.mxd

**Legend**

- MBTA Commuter Rail Station
- MBTA Commuter Rail
- - - Town Boundaries
- Proposed Alternative Alignment
- ▭ Limit of Work for Proposed Station
- ▭ Limit of Permanent Impact for Proposed Rail
- ▭ Traction Power Station\*
- Location of Vibration Impacted Receptor
- Schools

\* Traction power stations are only required for electric rail alternative

**Index Map**

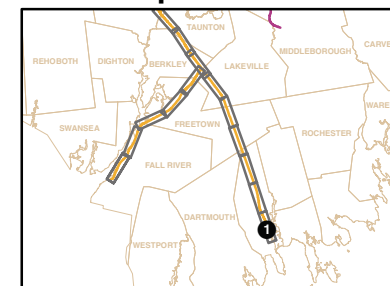


Figure 4.7-6e

All Rail Alternatives - New Bedford Main Line
Vibration Impacted Receptors



Printing Date: 6/23/2009  
 File: \\mbos\projects\101111\_00\GIS\project\Phase2\TechReports\Vibration\EC\Rail\_Vibration\_Attleboro\_Page1.mxd

**Legend**

- MBTA Commuter Rail Station
- Proposed Alternative Alignment
- Location of Vibration Impacted Receptor
- MBTA Commuter Rail
- ▭ Limit of Work for Proposed Station
- Schools
- Town Boundaries
- ▭ Limit of Permanent Impact for Proposed Rail
- ▭ Traction Power Station\*

\* Traction power stations are only required for electric rail alternative

**Index Map**

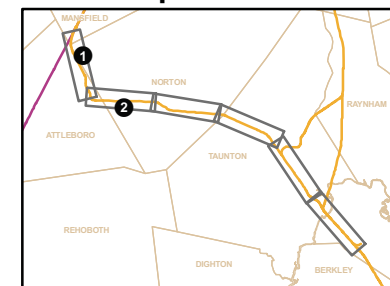


Figure 4.7-7a

Attleboro Alternative -  
 Attleboro Bypass and Attleboro  
 Secondary

Vibration Impacted Receptors



Printing Date: 6/23/2009  
 File: \\mbos\projects\10111.00\GIS\project\Phase2\TechReports\Vibration\ECVA\Rail\_Vibration\_Attleboro\_Page2.mxd

- Legend**
- MBTA Commuter Rail Station
  - MBTA Commuter Rail
  - Town Boundaries
  - Proposed Alternative Alignment
  - ▭ Limit of Work for Proposed Station
  - ▭ Limit of Permanent Impact for Proposed Rail
  - ▭ Traction Power Station\*
  - Location of Vibration Impacted Receptor
  - Schools

\* Traction power stations are only required for electric rail alternative

**Index Map**

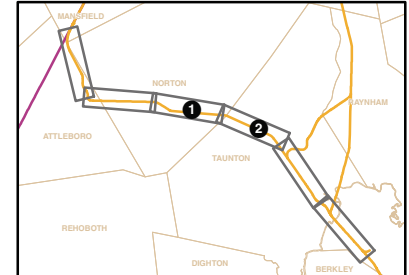


Figure 4.7-7b  
 Attleboro Alternative -  
 Attleboro Bypass and Attleboro  
 Secondary  
 Vibration Impacted Receptors



Printing Date: 6/23/2009  
 File: \\mbos\projects\10111\_00\GIS\project\Phase2\TechRepts\Rail\_Vibration\ECV\Rail\_Vibration\_Atteboro\_Page3.mxd

**Legend**

- MBTA Commuter Rail Station
- MBTA Commuter Rail
- - - Town Boundaries
- Proposed Alternative Alignment
- ▭ Limit of Work for Proposed Station
- ▭ Limit of Permanent Impact for Proposed Rail
- ▭ Traction Power Station\*
- Location of Vibration Impacted Receptor
- Schools

\* Traction power stations are only required for electric rail alternative

**Index Map**

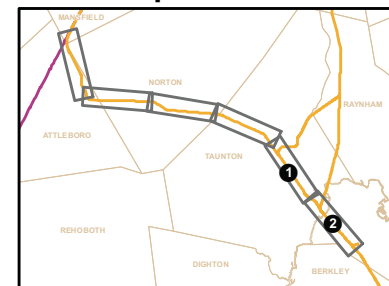
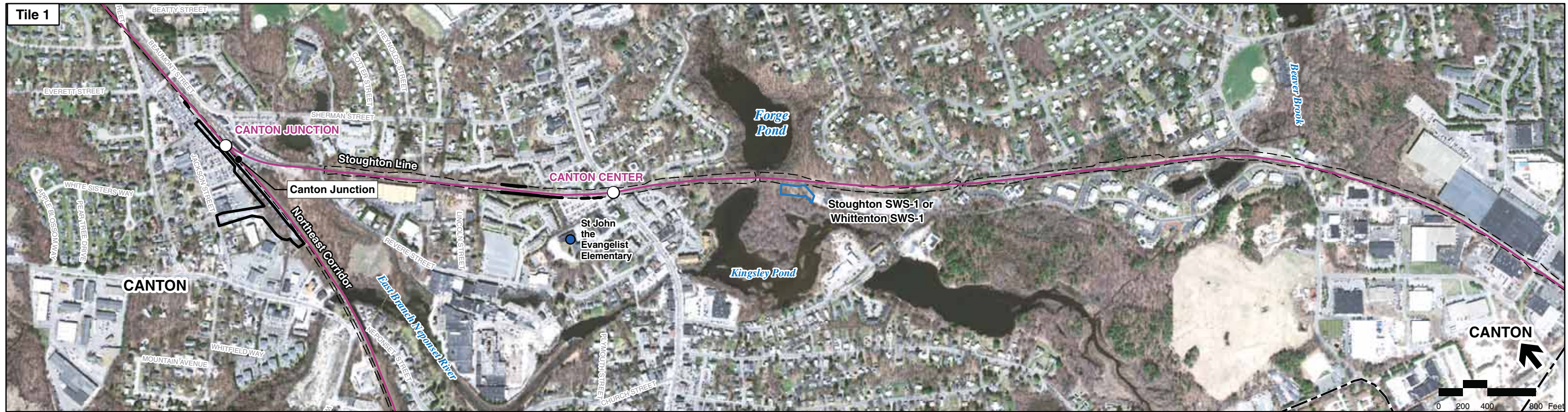


Figure 4.7-7c

Attleboro Alternative -  
 Attleboro Bypass and Attleboro  
 Secondary

Vibration Impacted Receptors



Printing Date: 6/23/2009  
 File: \\mabos\projects\10111\GIS\project\Phase2\TechReports\Vibration\ECVibration\_Stoughton\_Page1.mxd

- Legend**
- MBTA Commuter Rail Station
  - MBTA Commuter Rail
  - - - Town Boundaries
  - Proposed Alternative Alignment
  - ▭ Limit of Work for Proposed Station
  - ▭ Limit of Permanent Impact for Proposed Rail
  - ▭ Traction Power Station\*
  - Location of Vibration Impacted Receptor
  - Schools

\* Traction power stations are only required for electric rail alternative

**Index Map**

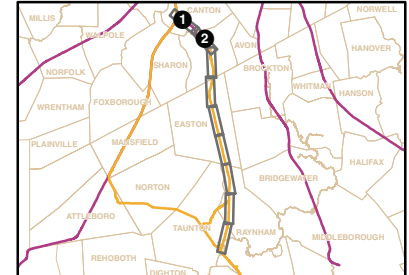
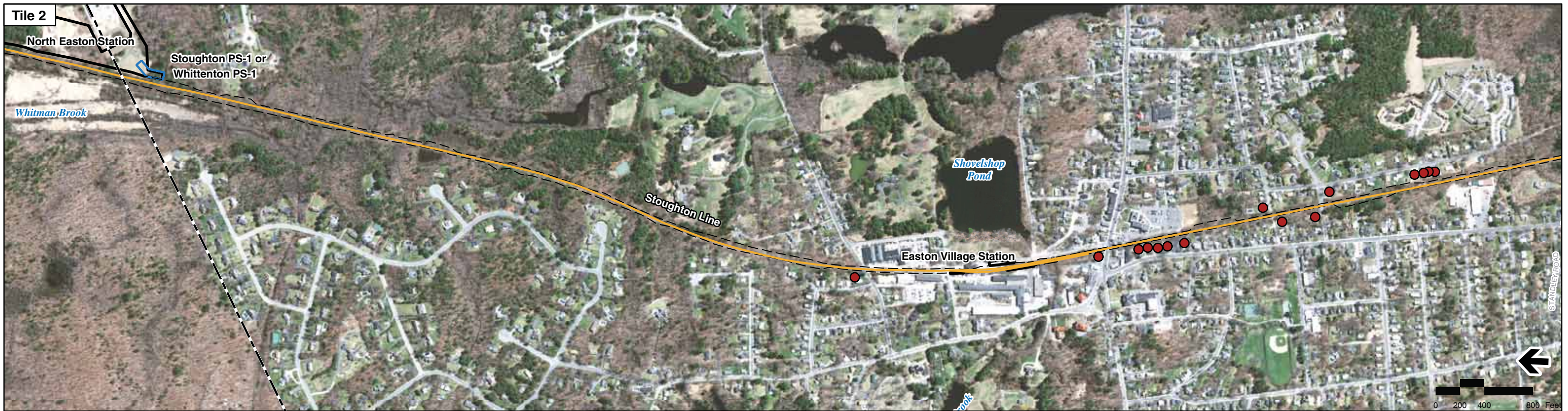


Figure 4.7-8a  
 Stoughton Alternative -  
 Stoughton Line  
 Vibration Impacted Receptors



Printing Date: 6/23/2009  
 File: \\mabos\projects\Phase2\TechReports\Vibration\ECVibration\_Stoughton\_Page2.mxd

**Legend**

- MBTA Commuter Rail Station
- Proposed Alternative Alignment
- Location of Vibration Impacted Receptor
- MBTA Commuter Rail
- ▭ Limit of Work for Proposed Station
- Schools
- Town Boundaries
- ▭ Limit of Permanent Impact for Proposed Rail
- ▭ Traction Power Station\*

\* Traction power stations are only required for electric rail alternative

**Index Map**

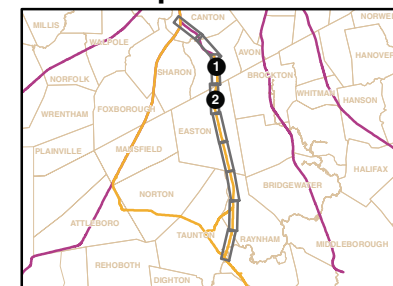
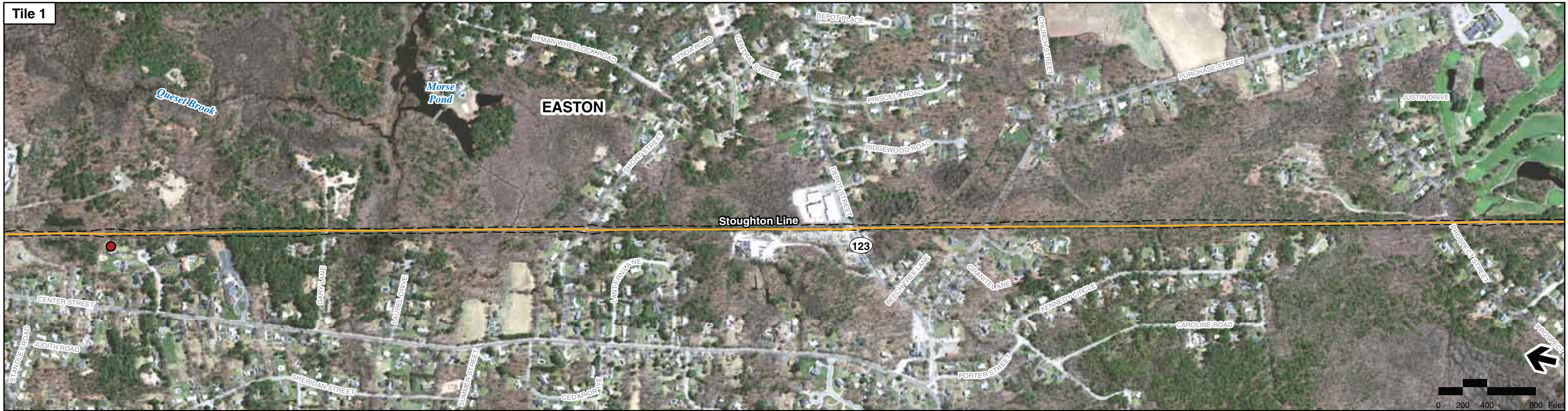


Figure 4.7-8b  
 Stoughton Alternative -  
 Stoughton Line  
 Vibration Impacted Receptors



Printing Date: 6/23/2009  
 File: \\mabos\projects\Phase2\TechReports\Vibration\ECVibration\_Stoughton\_Page3.mxd

**Legend**

- MBTA Commuter Rail Station
- MBTA Commuter Rail
- - Town Boundaries
- Proposed Alternative Alignment
- ▭ Limit of Work for Proposed Station
- ▭ Limit of Permanent Impact for Proposed Rail
- ▭ Traction Power Station\*
- Location of Vibration Impacted Receptor
- Schools

\* Traction power stations are only required for electric rail alternative

**Index Map**

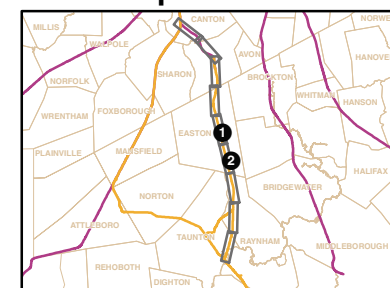
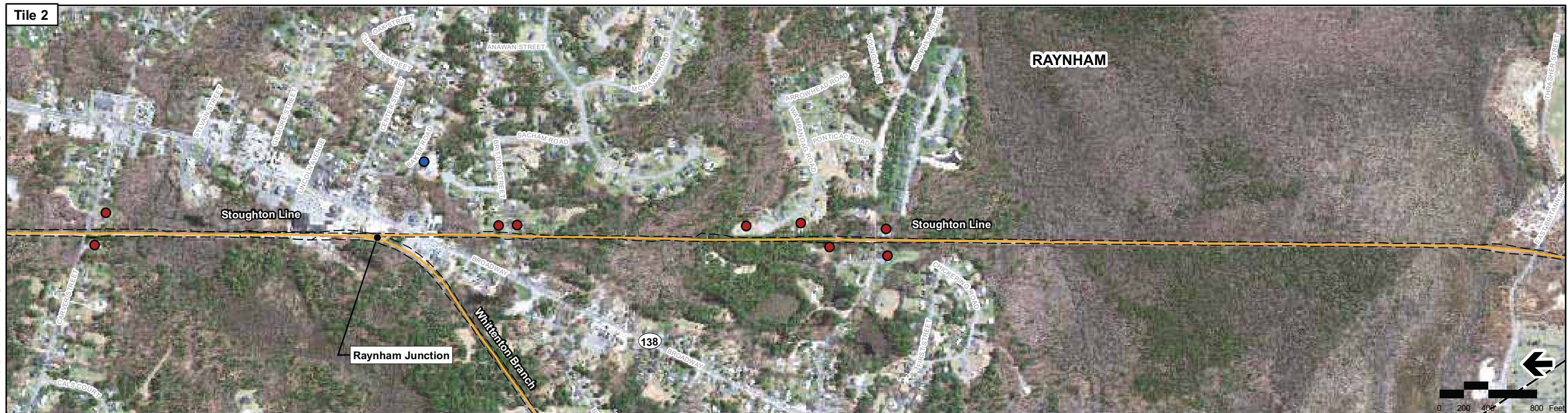


Figure 4.7-8c

Stoughton Alternative -  
Stoughton Line

Vibration Impacted Receptors



Printing Date: 6/23/2009  
 File: \\mbos\projects\10111\_00\GIS\project\Phase2\TechReports\Vibration\ECVibration\_Stoughton\_Page4.mxd

**Legend**

- MBTA Commuter Rail Station
- MBTA Commuter Rail
- Town Boundaries
- Proposed Alternative Alignment
- ▭ Limit of Work for Proposed Station
- ▭ Limit of Permanent Impact for Proposed Rail
- ▭ Traction Power Station\*
- Location of Vibration Impacted Receptor
- Schools

\* Traction power stations are only required for electric rail alternative

**Index Map**

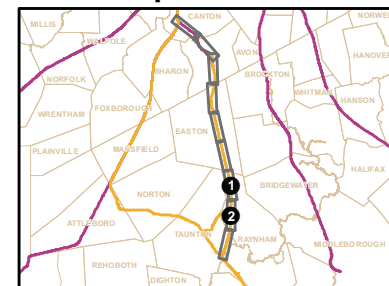


Figure 4.7-8d  
 Stoughton Alternative -  
 Stoughton Line  
 Vibration Impacted Receptors





Printing Date: 6/23/2009  
 File: \\mabos\projects\101111\GIS\project\Phase2\TechReports\Vibration\ECVibration\_Stoughton\_Page65.mxd

**Legend**

- MBTA Commuter Rail Station
- MBTA Commuter Rail
- - - Town Boundaries
- Proposed Alternative Alignment
- ▭ Limit of Work for Proposed Station
- ▭ Limit of Permanent Impact for Proposed Rail
- ▭ Traction Power Station\*
- Location of Vibration Impacted Receptor
- Schools

\* Traction power stations are only required for electric rail alternative

**Index Map**

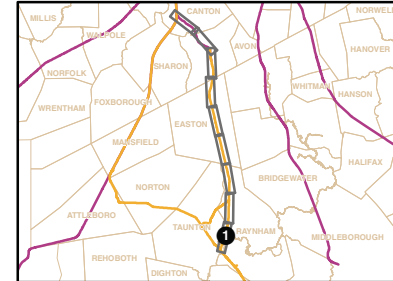


Figure 4.7-8e  
 Stoughton Alternative -  
 Stoughton Line  
 Vibration Impacted Receptors



- Legend**
- MBTA Commuter Rail Station
  - MBTA Commuter Rail
  - Town Boundaries
  - Proposed Alternative Alignment
  - ▭ Limit of Work for Proposed Station
  - ▭ Limit of Permanent Impact for Proposed Rail
  - ▭ Traction Power Station\*
  - Location of Vibration Impacted Receptor
  - Schools

\* Traction power stations are only required for electric rail alternative

**Index Map**

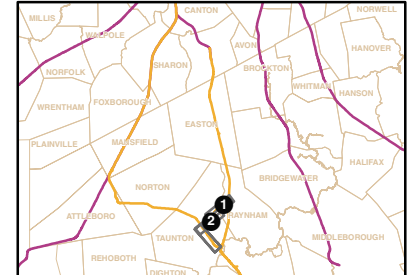


Figure 4.7-9a  
Whittenton Alternative - Whittenton Branch  
Vibration Impacted Receptors

Printing Date: 6/23/2009  
 File: \\mabos\projects\101111\GIS\project\Phase2\TechReports\Vibration\ECVibration\_Whittenton\_Whittenton\_Page1.mxd



Printing Date: 6/23/2009  
 File: \\mabos\projects\10111\_00\GIS\project\Phase2\TechReports\Vibration\EC\Vibration\_Stoughton\_Whittenton\_Whittenton\_Page2.mxd

**Legend**

- MBTA Commuter Rail Station
- MBTA Commuter Rail
- - - Town Boundaries
- Proposed Alternative Alignment
- ▭ Limit of Work for Proposed Station
- ▭ Limit of Permanent Impact for Proposed Rail
- ▭ Traction Power Station\*
- Location of Vibration Impacted Receptor
- Schools

\* Traction power stations are only required for electric rail alternative

**Index Map**

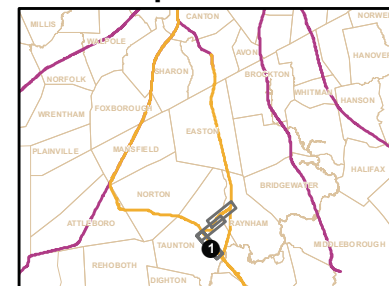


Figure 4.7-9b  
 Whittenton Alternative -  
 Whittenton Branch  
 Vibration Impacted Receptors