



Printing Date: 7/11/2009
 File: \\MBOS\projects\10111.00\GIS\project\Phase2\TechReports\TELECITE_EC_NewBedford_lp2.mxd

Legend

- | | | |
|------------------------------|---|---|
| ○ MBTA Commuter Rail Station | — Proposed Alternative Alignment | ■ Protected Open Space |
| — MBTA Commuter Rail | ▭ Limit of Work for Proposed Station/
Layover Facility | ▨ NHESP Priority Habitats of Rare Species |
| --- Town Boundaries | ▭ Limit of Permanent Impact for Proposed Rail | ▨ NHESP Estimated Habitats of Rare Wildlife |
| | ▭ Traction Power Station* | ■ Open Water |
| | | ▨ Impacted NHESP Habitats |
| | | ■ Area of Critical Environmental Concern (ACEC) |

* Traction power stations are only required for electric rail alternative

Index Map

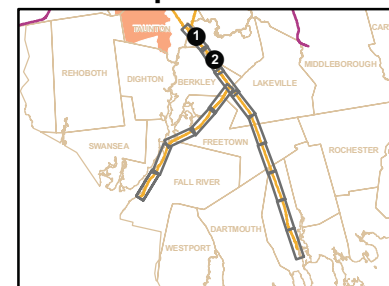


Figure 4.15-1a
 All Rail Alternatives - New Bedford Mainline
 (Sheet 1 of 5)
 Threatened & Endangered Species



Printing Date: 7/11/2009
 File: I:\mbos\projects\10111_00\GIS\project\Phase2\TechReports\TE\EC\TE_EC_NewBedford.jpg2.mxd

Legend

- MBTA Commuter Rail Station
- MBTA Commuter Rail
- - - Town Boundaries
- Proposed Alternative Alignment
- ▭ Limit of Work for Proposed Station/Layover Facility
- ▭ Limit of Permanent Impact for Proposed Rail
- ▭ Traction Power Station*
- ▭ Protected Open Space
- ▭ NHESP Priority Habitats of Rare Species
- ▭ NHESP Estimated Habitats of Rare Wildlife
- ▭ Open Water
- ▭ Impacted NHESP Habitats
- ▭ Area of Critical Environmental Concern (ACEC)

* Traction power stations are only required for electric rail alternative

Index Map

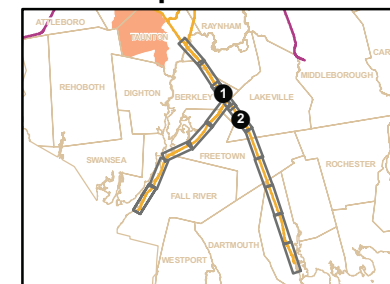


Figure 4.15-1b
 All Rail Alternatives - New Bedford Mainline
 (Sheet 2 of 5)
 Threatened & Endangered Species



Printing Date: 6/25/2009
 File: I:\mbos\projects\10111_00\GIS\project\Phase2\TechReports\TEC\TEC_EC_NewBedford_pg3.mxd

- Legend**
- MBTA Commuter Rail Station
 - MBTA Commuter Rail
 - Town Boundaries
 - Proposed Alternative Alignment
 - ▭ Limit of Work for Proposed Station/Layover Facility
 - ▭ Limit of Permanent Impact for Proposed Rail
 - ▭ Traction Power Station*
 - ▭ Protected Open Space
 - ▭ NHESP Priority Habitats of Rare Species
 - ▭ NHESP Estimated Habitats of Rare Wildlife
 - ▭ Open Water
 - ▭ Impacted NHESP Habitats
 - ▭ Area of Critical Environmental Concern (ACEC)

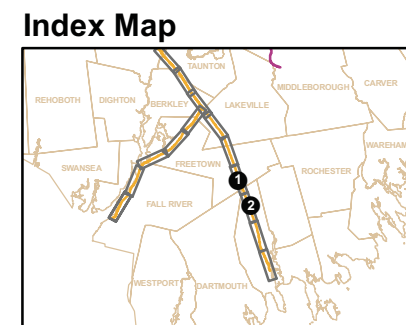


Figure 4.15-1c
 All Rail Alternatives - New Bedford Mainline
 (Sheet 3 of 5)
 Threatened & Endangered Species

* Traction power stations are only required for electric rail alternative



Printing Date: 7/1/2009
 File: \\msbos\projects\10111_000\GIS\project\Phase2\TechReports\TELECITE_EC_NewBedford_pp4.mxd

Legend

- MBTA Commuter Rail Station
- MBTA Commuter Rail
- Town Boundaries
- Proposed Alternative Alignment
- ▭ Limit of Work for Proposed Station/Layover Facility
- ▭ Limit of Permanent Impact for Proposed Rail
- ▭ Traction Power Station*
- ▭ Protected Open Space
- ▭ NHESP Priority Habitats of Rare Species
- ▭ NHESP Estimated Habitats of Rare Wildlife
- ▭ Open Water
- ▭ Impacted NHESP Habitats
- ▭ Area of Critical Environmental Concern (ACEC)

* Traction power stations are only required for electric rail alternative

Index Map

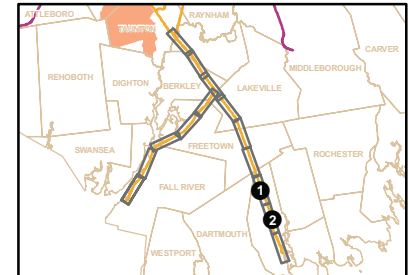


Figure 4.15-1d
 All Rail Alternatives - New Bedford Mainline
 (Sheet 4 of 5)
 Threatened & Endangered Species



Printing Date: 7/1/2009
 File: \\mabos\projects\101111.00\GIS\project\Phase2\TechReports\TELECTE_EC_NewBedford_1995.mxd

Legend

- MBTA Commuter Rail Station
- MBTA Commuter Rail
- Town Boundaries
- Proposed Alternative Alignment
- ▭ Limit of Work for Proposed Station/Layover Facility
- ▭ Limit of Permanent Impact for Proposed Rail
- ▭ Traction Power Station*
- ▭ Protected Open Space
- ▭ NHESP Priority Habitats of Rare Species
- ▭ NHESP Estimated Habitats of Rare Wildlife
- ▭ Open Water
- ▭ Impacted NHESP Habitats
- ▭ Area of Critical Environmental Concern (ACEC)

* Traction power stations are only required for electric rail alternative

Index Map



Figure 4.15-1e
 All Rail Alternatives - New Bedford Mainline
 (Sheet 5 of 5)
 Threatened & Endangered Species

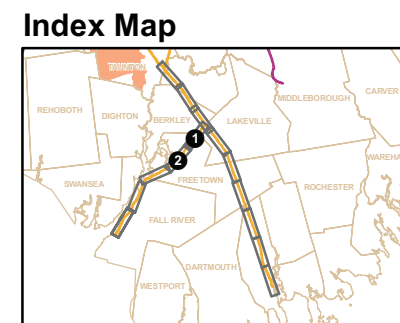
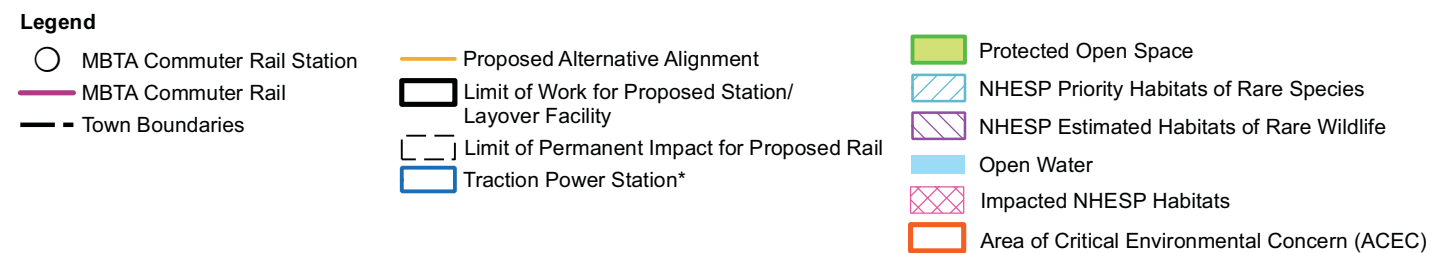
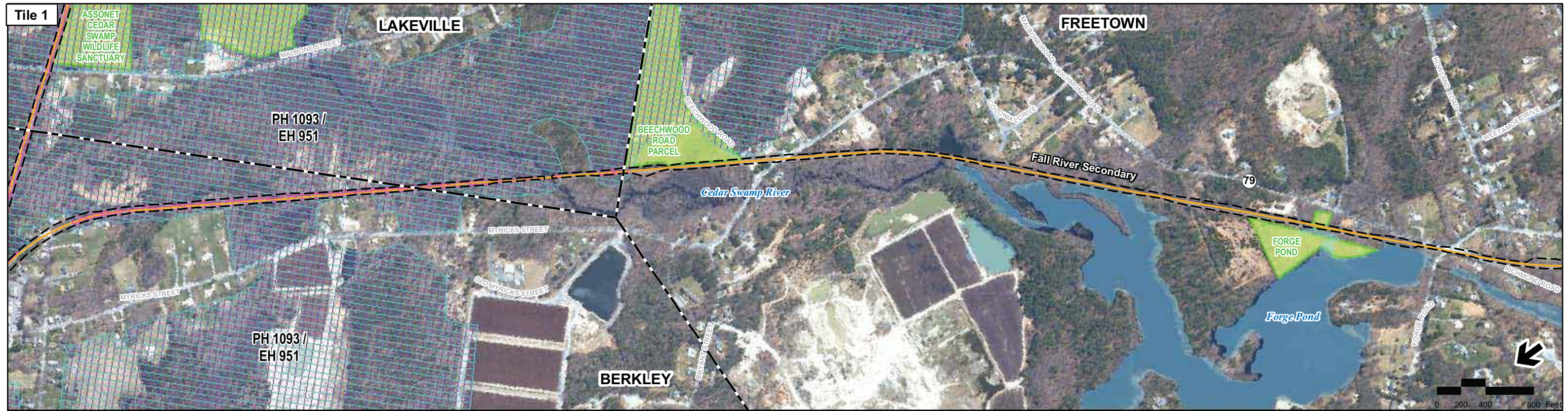
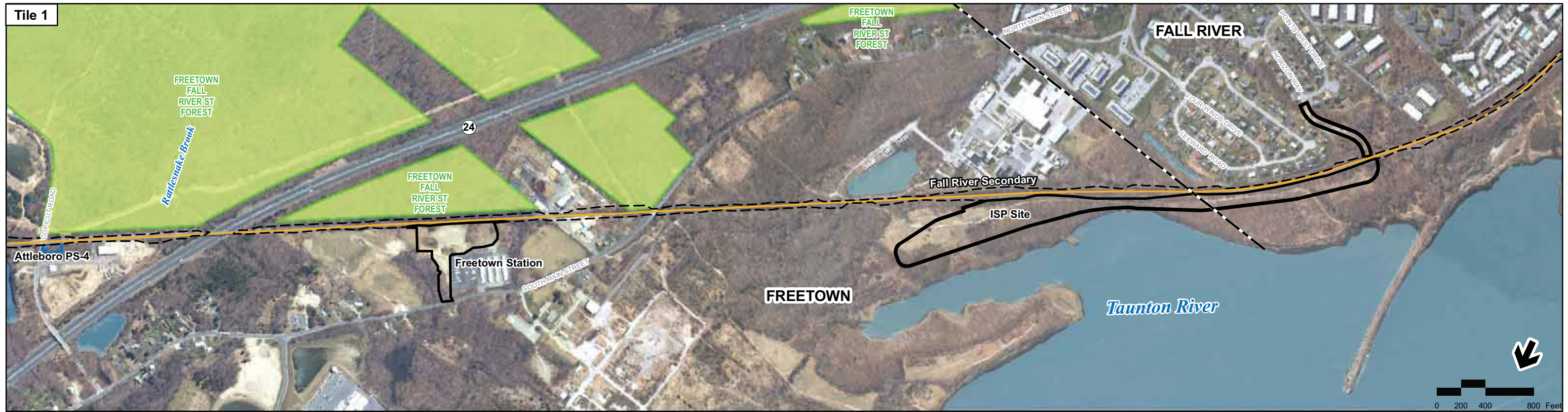


Figure 4.15-2a

All Rail Alternatives - Fall River Secondary
(Sheet 1 of 3)

Threatened & Endangered Species

* Traction power stations are only required for electric rail alternative



Printing Date: 7/11/2009
 \\maboa\projects\10111_00\GIS\project\Phase2\TechReports\TILETE_EC_FallRiver_pg2.mxd

Legend

- MBTA Commuter Rail Station
- MBTA Commuter Rail
- Town Boundaries
- Proposed Alternative Alignment
- ▭ Limit of Work for Proposed Station/Layover Facility
- ▭ Limit of Permanent Impact for Proposed Rail
- ▭ Traction Power Station*
- ▭ Protected Open Space
- ▨ NHESP Priority Habitats of Rare Species
- ▨ NHESP Estimated Habitats of Rare Wildlife
- ▭ Open Water
- ▨ Impacted NHESP Habitats
- ▭ Area of Critical Environmental Concern (ACEC)

* Traction power stations are only required for electric rail alternative

Index Map

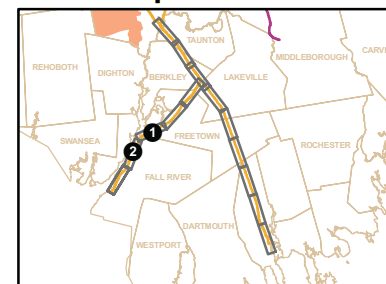


Figure 4.15-2b
 All Rail Alternatives - Fall River Secondary
 (Sheet 2 of 3)
 Threatened & Endangered Species



Printing Date: 7/11/2009
 \\mabos\projects\10111_00\GIS\project\Phase2\TechReports\TELECITE_EC_FallRiver_pg3.mxd

Legend

- MBTA Commuter Rail Station
- MBTA Commuter Rail
- Town Boundaries
- Proposed Alternative Alignment
- ▭ Limit of Work for Proposed Station/ Layover Facility
- ▭ Limit of Permanent Impact for Proposed Rail
- ▭ Traction Power Station*
- ▭ Protected Open Space
- ▭ NHESP Priority Habitats of Rare Species
- ▭ NHESP Estimated Habitats of Rare Wildlife
- ▭ Open Water
- ▭ Impacted NHESP Habitats
- ▭ Area of Critical Environmental Concern (ACEC)

* Traction power stations are only required for electric rail alternative

Index Map

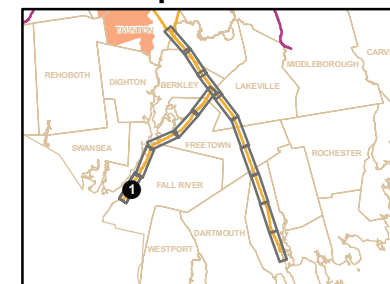


Figure 4.15-2c
 All Rail Alternatives - Fall River Secondary
 (Sheet 3 of 3)
 Threatened & Endangered Species



Printing Date: 7/11/2009
 \\mabos\projects\101111_00\GIS\project\Phase2\TechReports\TELECITE_EC_NEC_pg1.mxd

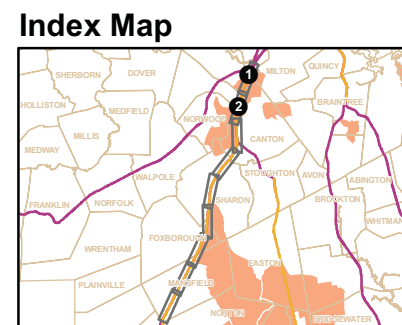
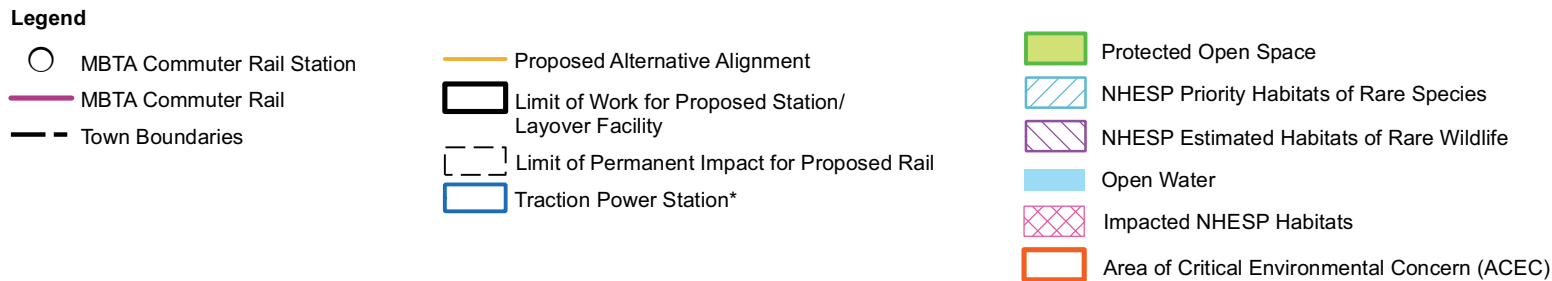


Figure 4.15-3a
 Attleboro Alternatives - Northeast Corridor
 (Sheet 1 of 5)
 Threatened & Endangered Species

* Traction power stations are only required for electric rail alternative



Printing Date: 7/1/2009
 File: \\hbr\hbr\Bos\GIS\Projects\Phase2\TechReports\WaterQuality\EC\WQ_EC_b_NEC.mxd

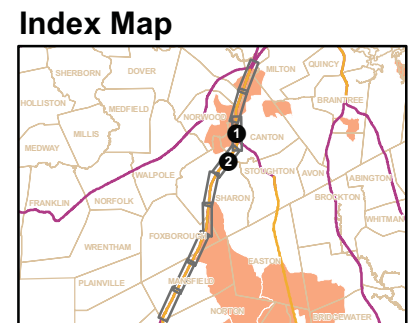
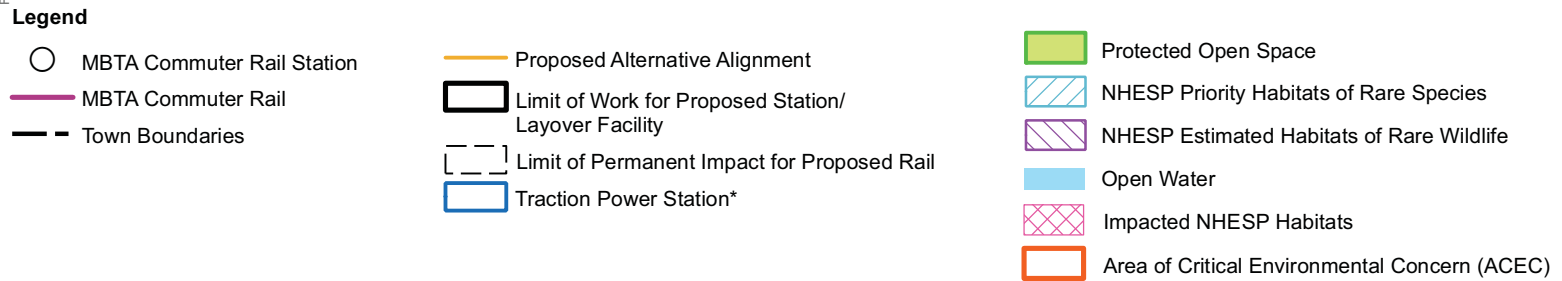
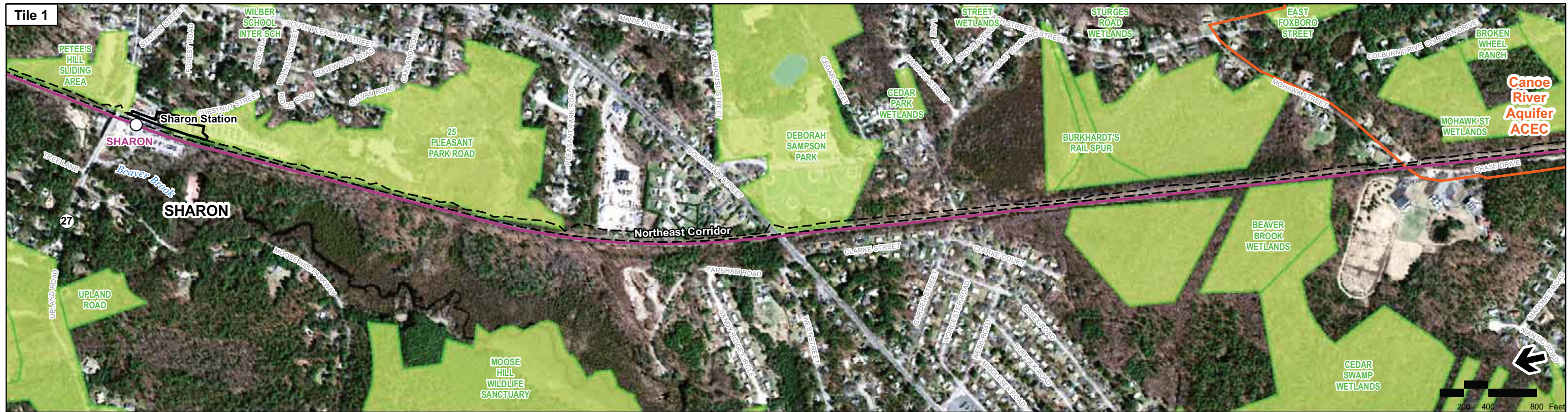


Figure 4.15-3b
 Attleboro Alternatives - Northeast Corridor
 (Sheet 2 of 5)
 Threatened & Endangered Species

* Traction power stations are only required for electric rail alternative



Printing Date: 7/1/2009
 \\mabos\projects\Phase2\TechReports\ELECTE_EC_NEC_pg3.mxd

Legend

MBTA Commuter Rail Station	Proposed Alternative Alignment	Protected Open Space
MBTA Commuter Rail	Limit of Work for Proposed Station/ Layover Facility	NHESP Priority Habitats of Rare Species
Town Boundaries	Limit of Permanent Impact for Proposed Rail	NHESP Estimated Habitats of Rare Wildlife
Traction Power Station*		Open Water
		Impacted NHESP Habitats
		Area of Critical Environmental Concern (ACEC)

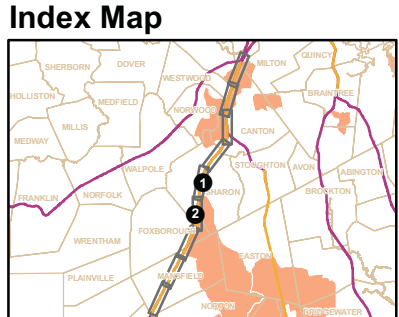
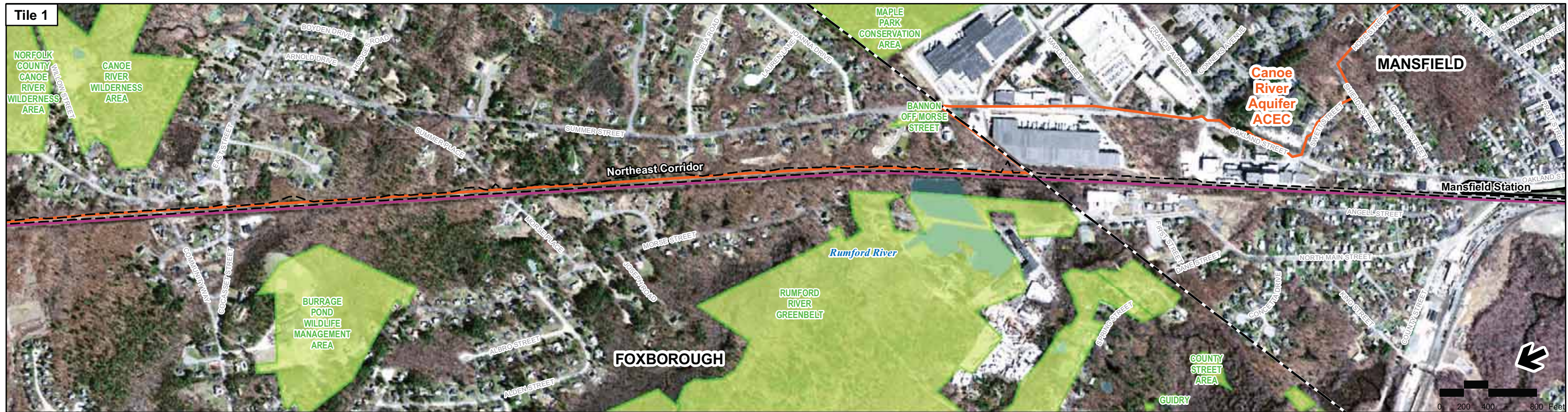


Figure 4.15-3c
 Attleboro Alternatives - Northeast Corridor
 (Sheet 3 of 5)
 Threatened & Endangered Species

* Traction power stations are only required for electric rail alternative



Printing Date: 7/11/2009
 \\mabos\projects\10111_00\GIS\project\Phase2\TechReports\TEECITE_EC_NEC_pg4.mxd

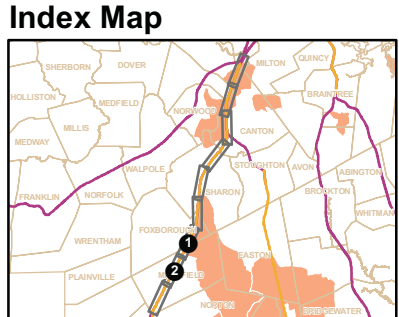
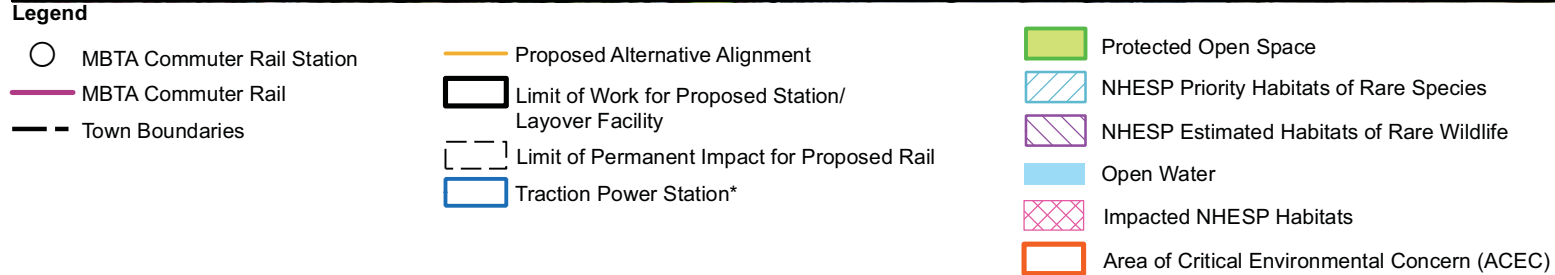
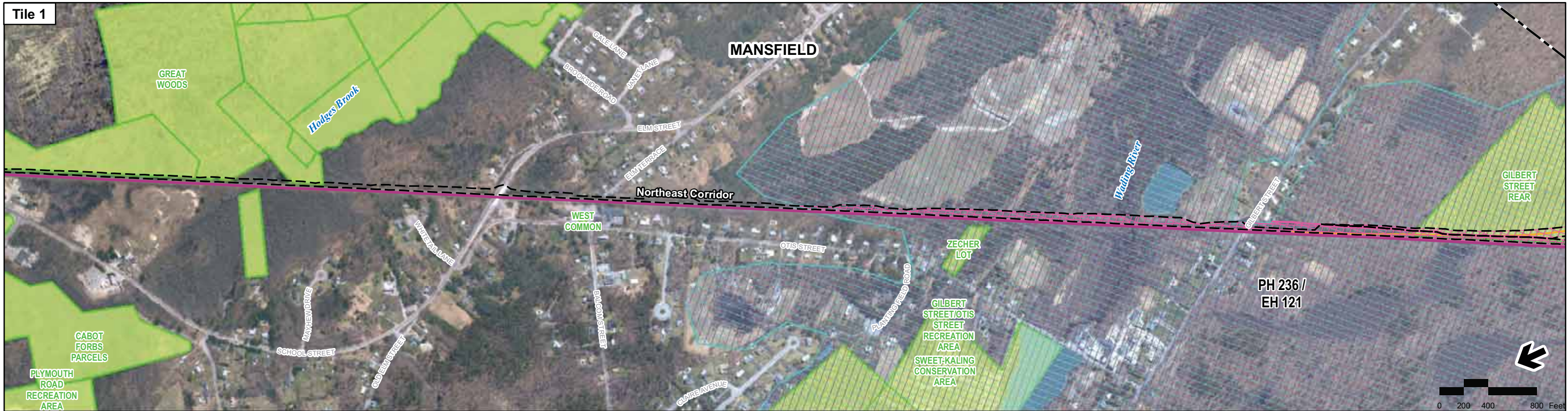


Figure 4.15-3d
 Attleboro Alternatives - Northeast Corridor
 (Sheet 4 of 5)
 Threatened & Endangered Species

* Traction power stations are only required for electric rail alternative



Printing Date: 7/11/2009
 \\mabes\projects\10111_00\GIS\project\Phase2\TechReports\TELECTE_EC_NEC_pg5.mxd

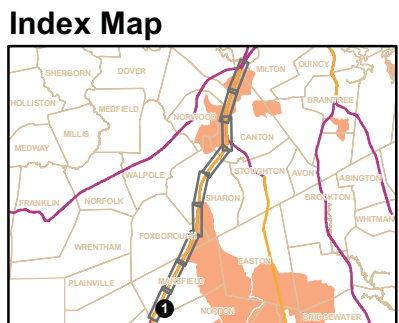
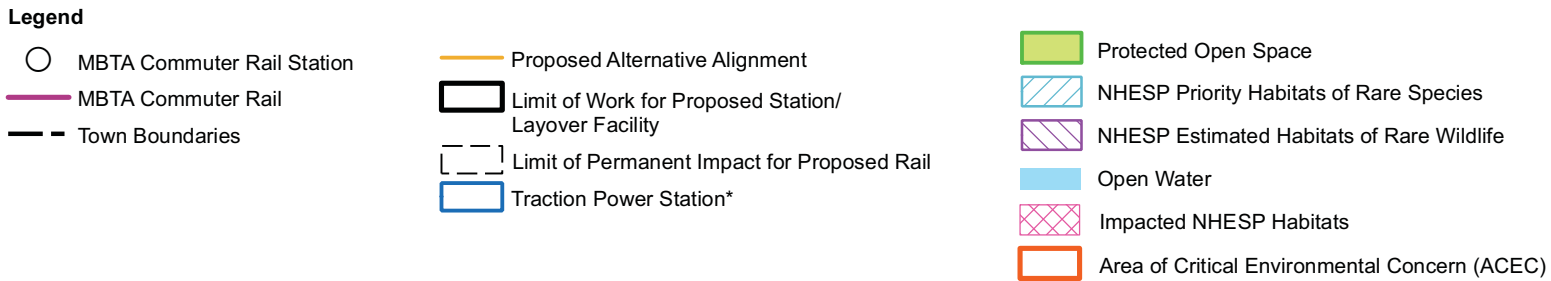


Figure 4.15-3e
 Attleboro Alternatives - Northeast Corridor
 (Sheet 5 of 5)
 Threatened & Endangered Species

* Traction power stations are only required for electric rail alternative



Printing Date: 7/11/2009
 File: \\msbos\projects\10111_00\GIS\project\Phase2\TechReports\TEC\TE_EC_Atteleboro_pg1.mxd

- Legend**
- MBTA Commuter Rail Station
 - MBTA Commuter Rail
 - Town Boundaries
 - Proposed Alternative Alignment
 - ▭ Limit of Work for Proposed Station/ Layover Facility
 - ▭ Limit of Permanent Impact for Proposed Rail
 - ▭ Traction Power Station*
 - ▭ Protected Open Space
 - ▨ NHESP Priority Habitats of Rare Species
 - ▨ NHESP Estimated Habitats of Rare Wildlife
 - ▭ Open Water
 - ▨ Impacted NHESP Habitats
 - ▭ Area of Critical Environmental Concern (ACEC)

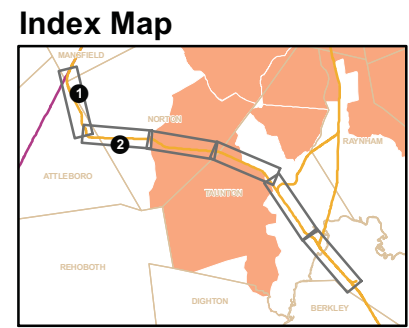


Figure 4.15-4a

Attleboro Alternatives - Attleboro Bypass and Attleboro Secondary (Sheet 1 of 3)

Threatened & Endangered Species

* Traction power stations are only required for electric rail alternative



Printing Date: 7/11/2009
 File: \\mbos\projects\10111_00\GIS\project\Phase2\TechReports\TELETYPE_EC_Attleboro_pg2.mxd

- Legend**
- MBTA Commuter Rail Station
 - MBTA Commuter Rail
 - Town Boundaries
 - Proposed Alternative Alignment
 - Limit of Work for Proposed Station/ Layover Facility
 - Limit of Permanent Impact for Proposed Rail
 - Traction Power Station*
 - Protected Open Space
 - NHESP Priority Habitats of Rare Species
 - NHESP Estimated Habitats of Rare Wildlife
 - Open Water
 - Impacted NHESP Habitats
 - Area of Critical Environmental Concern (ACEC)

Index Map

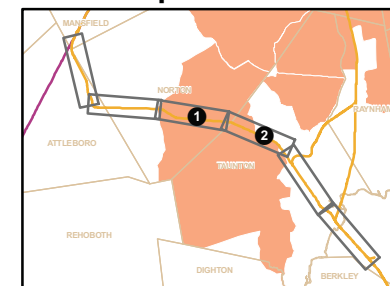


Figure 4.15-4b
 Attleboro Alternatives - Attleboro Bypass
 and Attleboro Secondary (Sheet 2 of 3)
 Threatened & Endangered Species

* Traction power stations are only required for electric rail alternative



Printing Date: 7/11/2009
 V:\mabos\projects\10111_00\GIS\project\Phase2\TechReports\ELECTE_EC_Atteboro_pg3.mxd

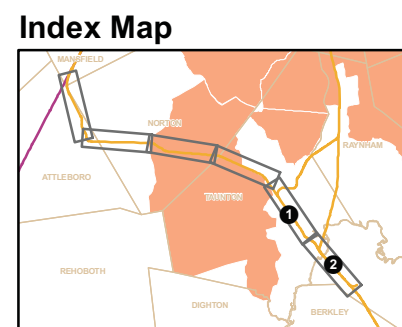
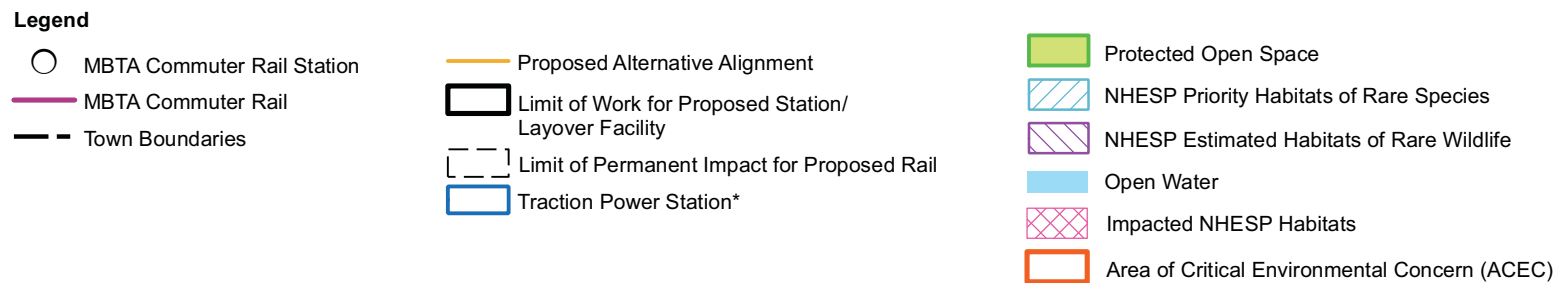
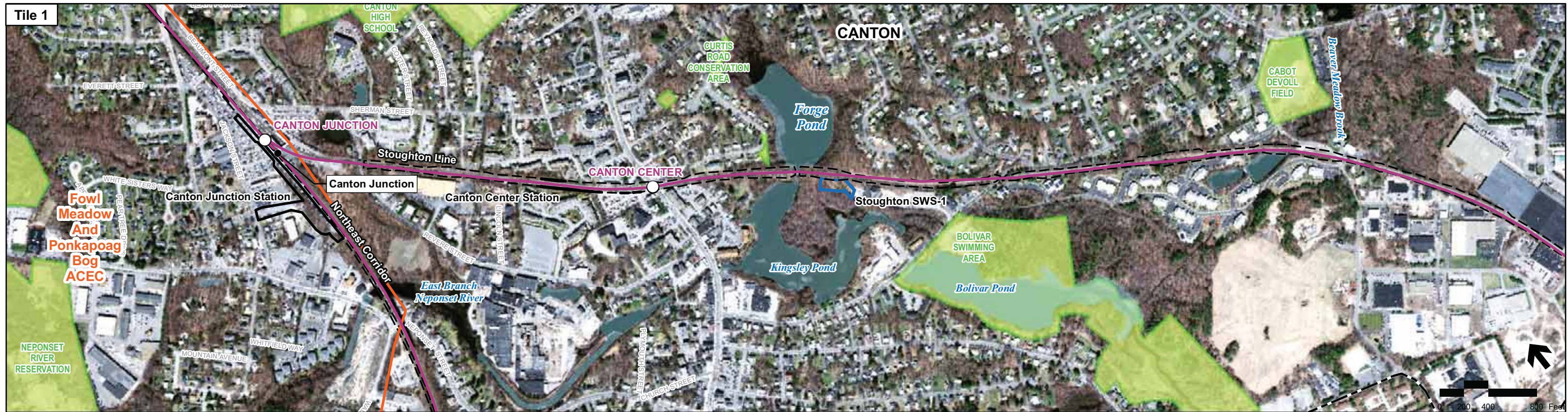


Figure 4.15-4c
**Attleboro Alternatives - Attleboro Bypass
 and Attleboro Secondary (Sheet 3 of 3)**
 Threatened & Endangered Species

* Traction power stations are only required for electric rail alternative



Printing Date: 7/11/2009
 \\mabos\projects\10111\00\GIS\project\Phase2\Tech\Reports\TELECTE_EC_Stoughton_pg1.mxd

- Legend**
- MBTA Commuter Rail Station
 - MBTA Commuter Rail
 - - - Town Boundaries
 - Proposed Alternative Alignment
 - ▭ Limit of Work for Proposed Station/Layover Facility
 - ▭ Limit of Permanent Impact for Proposed Rail
 - ▭ Traction Power Station*
 - ▭ Protected Open Space
 - ▭ NHESP Priority Habitats of Rare Species
 - ▭ NHESP Estimated Habitats of Rare Wildlife
 - ▭ Open Water
 - ▭ Impacted NHESP Habitats
 - ▭ Area of Critical Environmental Concern (ACEC)

Index Map

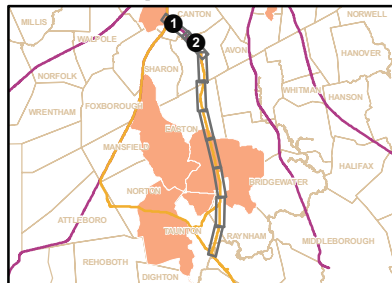


Figure 4.15-5a
 Stoughton Alternatives - Stoughton Line
 (Sheet 1 of 5)
 Threatened & Endangered Species

* Traction power stations are only required for electric rail alternative

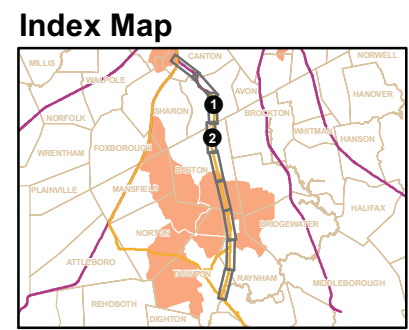
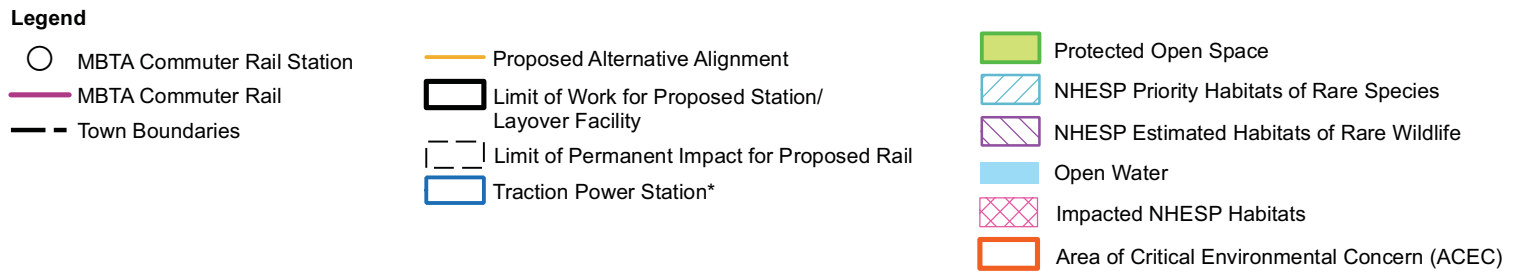
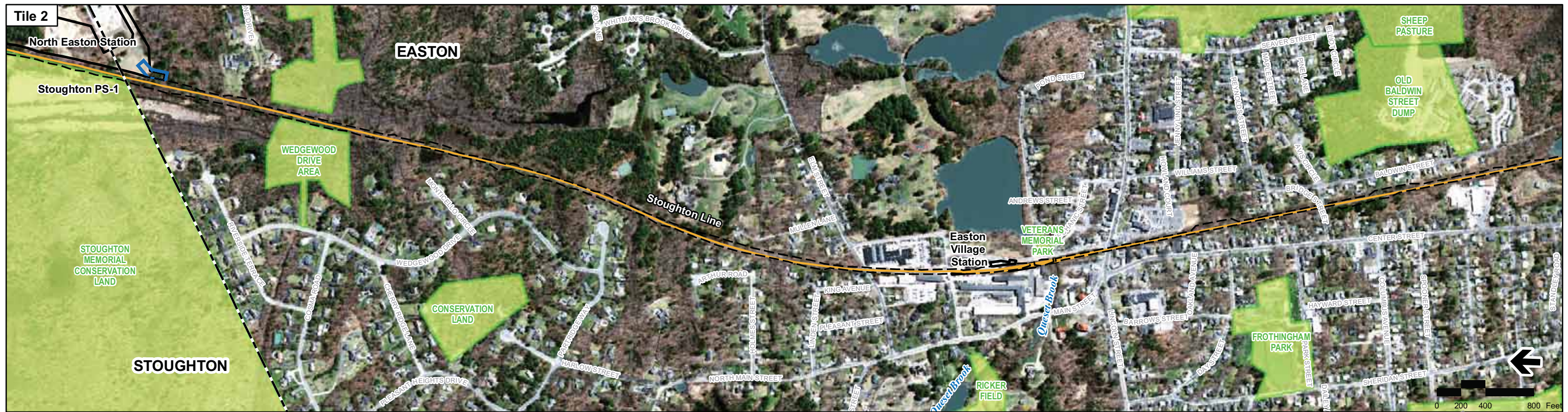
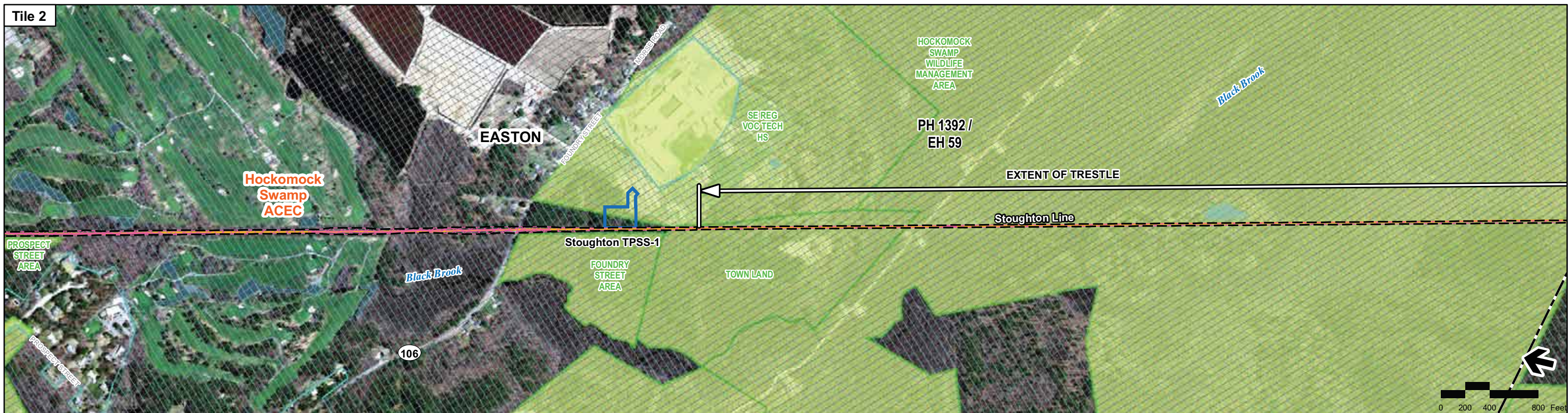


Figure 4.15-5b
 Stoughton Alternatives - Stoughton Line
 (Sheet 2 of 5)
 Threatened & Endangered Species

* Traction power stations are only required for electric rail alternative

Printing Date: 7/1/2009
 File: \\mba\bos\projects\10111.00\GIS\project\Phase2\TechReports\TEC\TEC_EC_Stoughton_pg2.mxd



Printing Date: 7/1/2009
 File: \\mbos\projects\10111_00\GIS\project\Phase2\TechReports\TELECITE_EC_Stoughton_pg3.mxd

Legend

- MBTA Commuter Rail Station
- MBTA Commuter Rail
- Town Boundaries
- Proposed Alternative Alignment
- ▭ Limit of Work for Proposed Station/Layover Facility
- ▭ Limit of Permanent Impact for Proposed Rail
- ▭ Traction Power Station*
- ▭ Protected Open Space
- ▭ NHESP Priority Habitats of Rare Species
- ▭ NHESP Estimated Habitats of Rare Wildlife
- ▭ Open Water
- ▭ Impacted NHESP Habitats
- ▭ Area of Critical Environmental Concern (ACEC)

Index Map

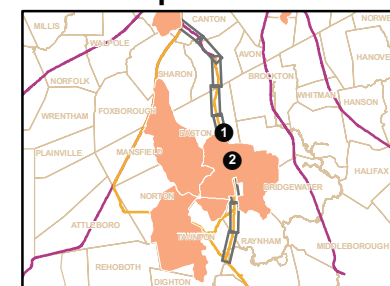


Figure 4.15-5c

Stoughton Alternatives - Stoughton Line
 (Sheet 3 of 5)
 Threatened & Endangered Species

* Traction power stations are only required for electric rail alternative



Printing Date: 7/11/2009
 File: \\mbos\projects\10111.00\GIS\project\Phase2\TechReports\TELE\EC - Stoughton_pg4.mxd

Legend

- | | | |
|------------------------------|---|---|
| ○ MBTA Commuter Rail Station | — Proposed Alternative Alignment | ■ Protected Open Space |
| — MBTA Commuter Rail | ▭ Limit of Work for Proposed Station/
Layover Facility | ▨ NHESP Priority Habitats of Rare Species |
| --- Town Boundaries | ▭ Limit of Permanent Impact for Proposed Rail | ▨ NHESP Estimated Habitats of Rare Wildlife |
| ■ Traction Power Station* | ■ Open Water | ▨ Impacted NHESP Habitats |
| | ■ Area of Critical Environmental Concern (ACEC) | |

* Traction power stations are only required for electric rail alternative

Index Map

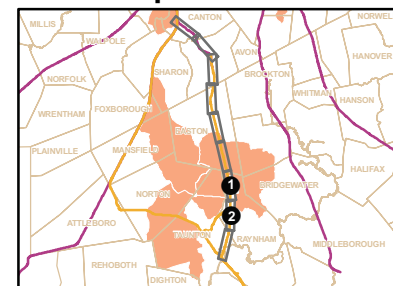
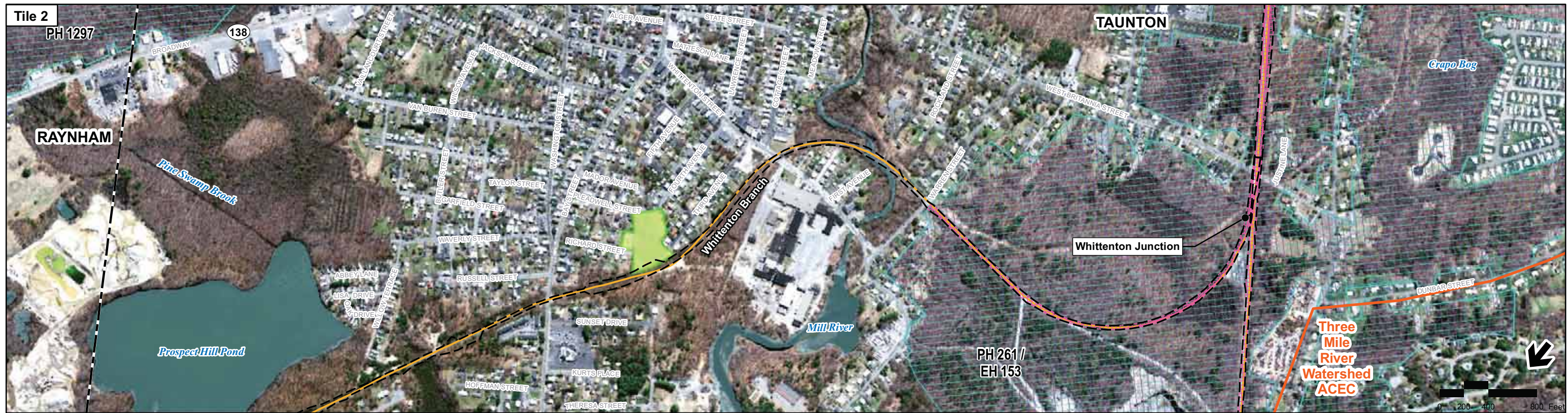


Figure 4.15-5d
 Stoughton Alternatives - Stoughton Line
 (Sheet 4 of 5)
 Threatened & Endangered Species



Printing Date: 7/11/2009
 File: \\mabos\projects\10111.00\GIS\project\Phase2\TechReports\TEC\TEC_EC_Sloughton_Whittenton_pg1.mxd

Legend

- MBTA Commuter Rail Station
- MBTA Commuter Rail
- Town Boundaries
- Proposed Alternative Alignment
- ▭ Limit of Work for Proposed Station/ Layover Facility
- ▭ Limit of Permanent Impact for Proposed Rail
- ▭ Traction Power Station*
- ▭ Protected Open Space
- ▭ NHESP Priority Habitats of Rare Species
- ▭ NHESP Estimated Habitats of Rare Wildlife
- ▭ Open Water
- ▭ Impacted NHESP Habitats
- ▭ Area of Critical Environmental Concern (ACEC)

* Traction power stations are only required for electric rail alternative

Index Map

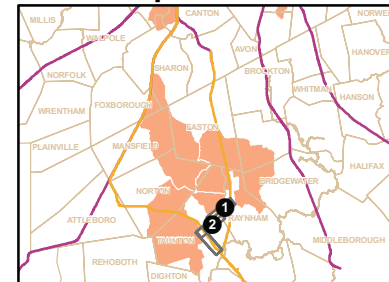


Figure 4.15-6a
 Whittenton Alternatives - Whittenton Branch
 (Sheet 1 of 2)
 Threatened & Endangered Species



Printing Date: 7/11/2009
 File: \\mabos\projects\10111.00\GIS\project\Phase2\TechReports\TE\ECTE_EC_Stoughton_Whittenton_Lpg2.mxd

Legend

- MBTA Commuter Rail Station
- MBTA Commuter Rail
- Town Boundaries
- Proposed Alternative Alignment
- ▭ Limit of Work for Proposed Station/Layover Facility
- ▭ Limit of Permanent Impact for Proposed Rail
- ▭ Traction Power Station*
- ▭ Protected Open Space
- ▭ NHESP Priority Habitats of Rare Species
- ▭ NHESP Estimated Habitats of Rare Wildlife
- ▭ Open Water
- ▭ Impacted NHESP Habitats
- ▭ Area of Critical Environmental Concern (ACEC)

* Traction power stations are only required for electric rail alternative

Index Map

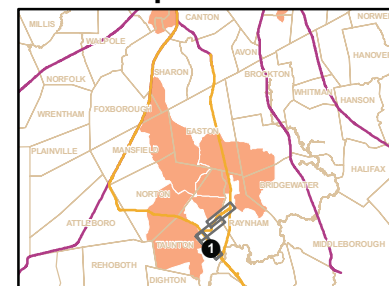
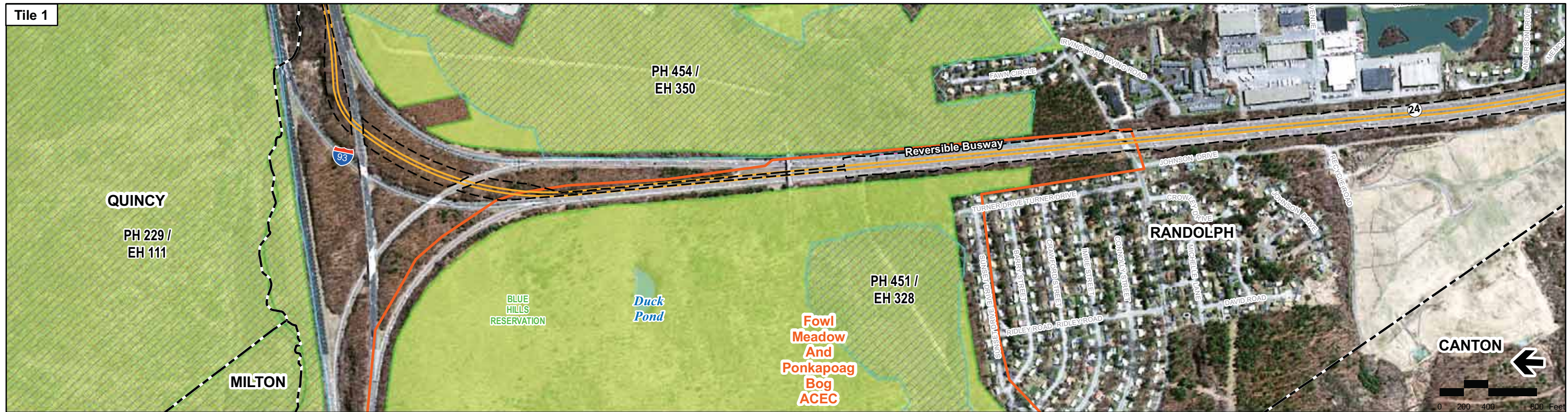


Figure 4.15-6b
 Whittenton Alternatives - Whittenton Branch
 (Sheet 2 of 2)
 Threatened & Endangered Species



Printing Date: 7/1/2009
 File: \\maboston\corporate\101111_00\GIS\Stoughton\Phase2\TechRecords\TELETYPE_EC_RapidBus_002.mxd

- Legend**
- MBTA Commuter Rail Station
 - MBTA Commuter Rail
 - Town Boundaries
 - Limit of Permanent Impact for Proposed Rapid Bus
 - Protected Open Space
 - ▨ NHESP Priority Habitats of Rare Species
 - ▨ NHESP Estimated Habitats of Rare Wildlife
 - Open Water
 - ▨ Impacted NHESP Habitats
 - Area of Critical Environmental Concern (ACEC)

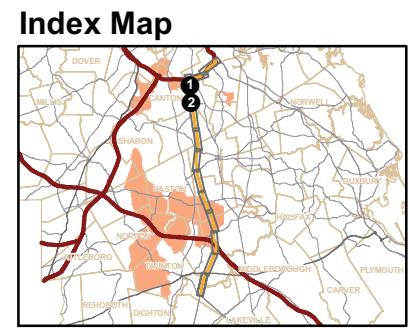


Figure 4.15-7b
 Rapid Bus Alternative
 (Sheet 2 of 7)
 Threatened & Endangered Species



Printing Date: 7/1/2009
 File: I:\mbos\projects\10111_00\GIS\project\Phase2\TechReports\TECH\TEC_EC_ReportBus_pg8.mxd

Legend

- MBTA Commuter Rail Station
- MBTA Commuter Rail
- Town Boundaries
- Limit of Permanent Impact for Proposed Rapid Bus
- Protected Open Space
- ▨ NHESP Priority Habitats of Rare Species
- ▨ NHESP Estimated Habitats of Rare Wildlife
- Open Water
- ▨ Impacted NHESP Habitats
- Area of Critical Environmental Concern (ACEC)

Index Map

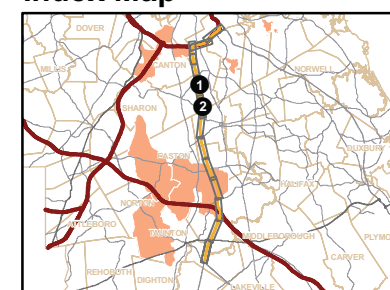


Figure 4.15-7c
 Rapid Bus Alternative
 (Sheet 3 of 7)
 Threatened & Endangered Species



Printing Date: 7/1/2009
 File: \\mabos\proj\ecis\Phase2\TechReports\TE\EC\TE_EC_RapidBus_fig4.mxd

Legend

- MBTA Commuter Rail Station
- MBTA Commuter Rail
- Town Boundaries
- Limit of Permanent Impact for Proposed Rapid Bus
- Protected Open Space
- ▨ NHESP Priority Habitats of Rare Species
- ▨ NHESP Estimated Habitats of Rare Wildlife
- Open Water
- ▨ Impacted NHESP Habitats
- Area of Critical Environmental Concern (ACEC)

Index Map

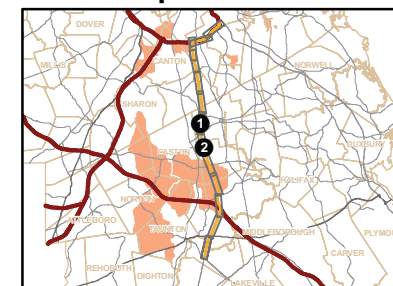


Figure 4.15-7d
 Rapid Bus Alternative
 (Sheet 4 of 7)
 Threatened & Endangered Species



Printing Date: 7/1/2009
 File: \\mbos\projects\10111_00\GIS\project\Phase2\TechReports\TELECITE_EC_RepofBus_pg5.mxd

- Legend**
- MBTA Commuter Rail Station
 - MBTA Commuter Rail
 - Town Boundaries
 - Limit of Permanent Impact for Proposed Rapid Bus
 - Protected Open Space
 - ▨ NHESP Priority Habitats of Rare Species
 - ▨ NHESP Estimated Habitats of Rare Wildlife
 - Open Water
 - ▨ Impacted NHESP Habitats
 - Area of Critical Environmental Concern (ACEC)

Index Map

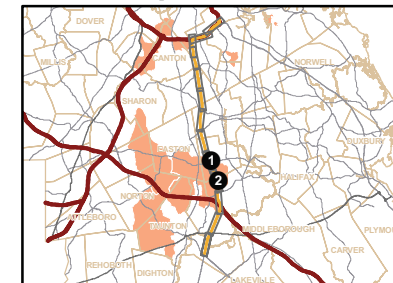


Figure 4.15-7e
 Rapid Bus Alternative
 (Sheet 5 of 7)
 Threatened & Endangered Species



Printing Date: 7/1/2009
 File: \\limbos\projects\101111_00\GIS\project\Phase2\TechReports\TELETYPE_EC_RapidBus_pg06.mxd

- Legend**
- MBTA Commuter Rail Station
 - MBTA Commuter Rail
 - Town Boundaries
 - Limit of Permanent Impact for Proposed Rapid Bus
 - Protected Open Space
 - ▨ NHESP Priority Habitats of Rare Species
 - ▨ NHESP Estimated Habitats of Rare Wildlife
 - Open Water
 - ▨ Impacted NHESP Habitats
 - Area of Critical Environmental Concern (ACEC)

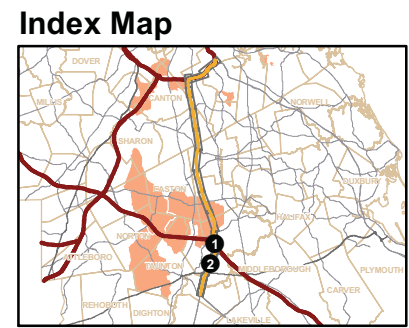


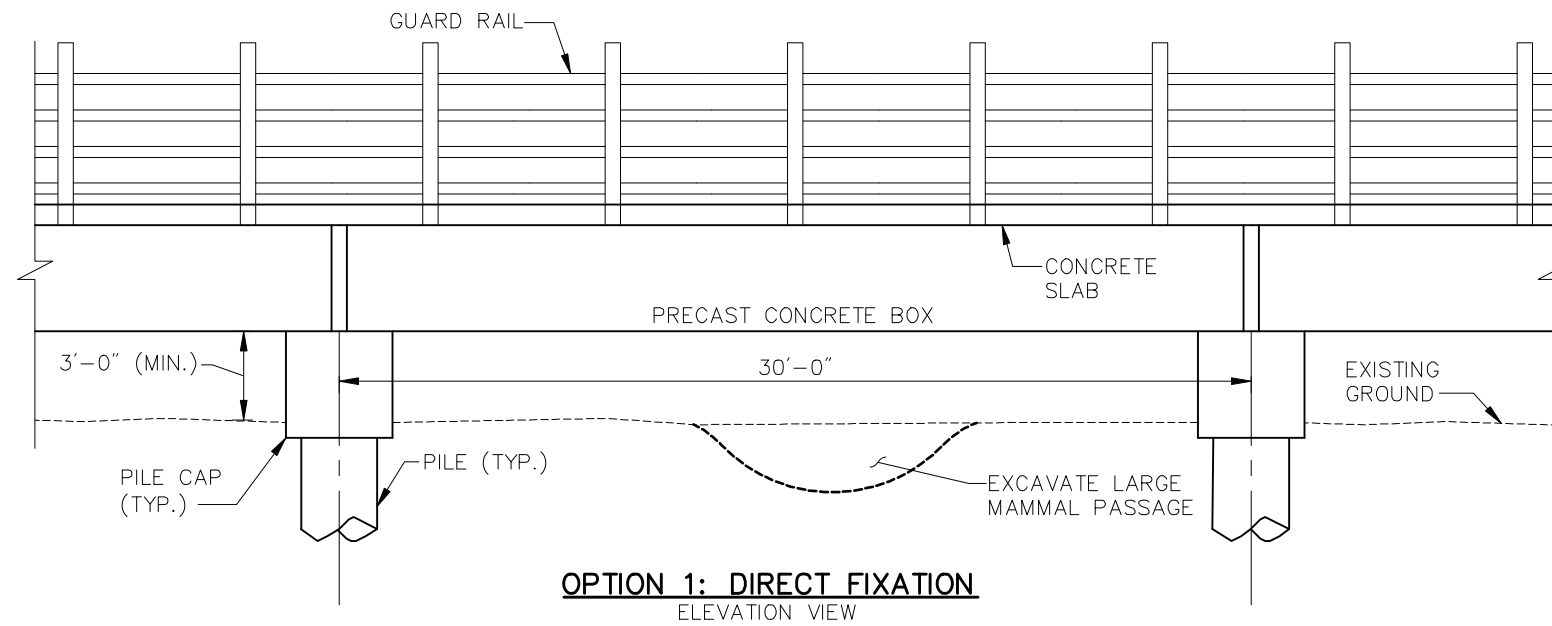
Figure 4.15-7f
 Rapid Bus Alternative
 (Sheet 6 of 7)
 Threatened & Endangered Species



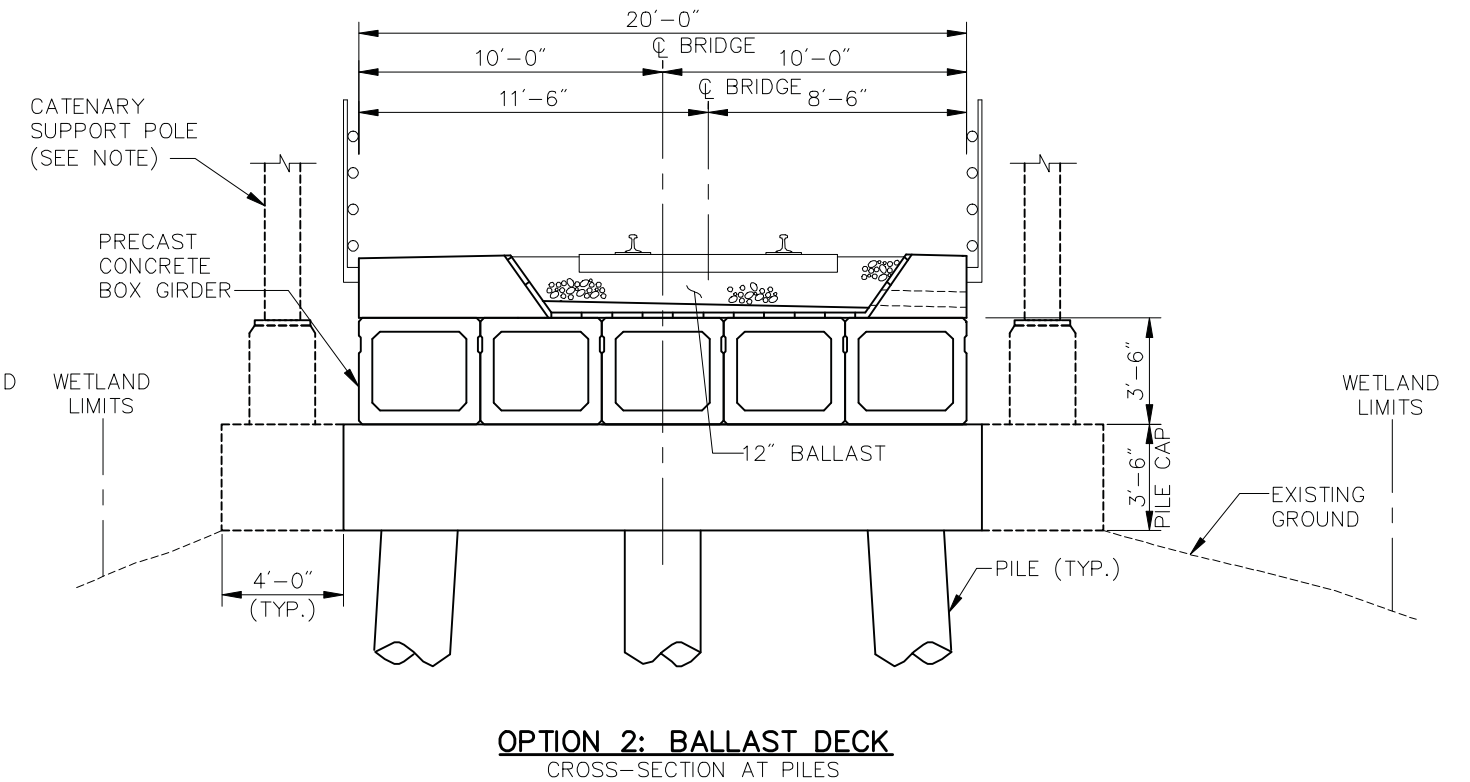
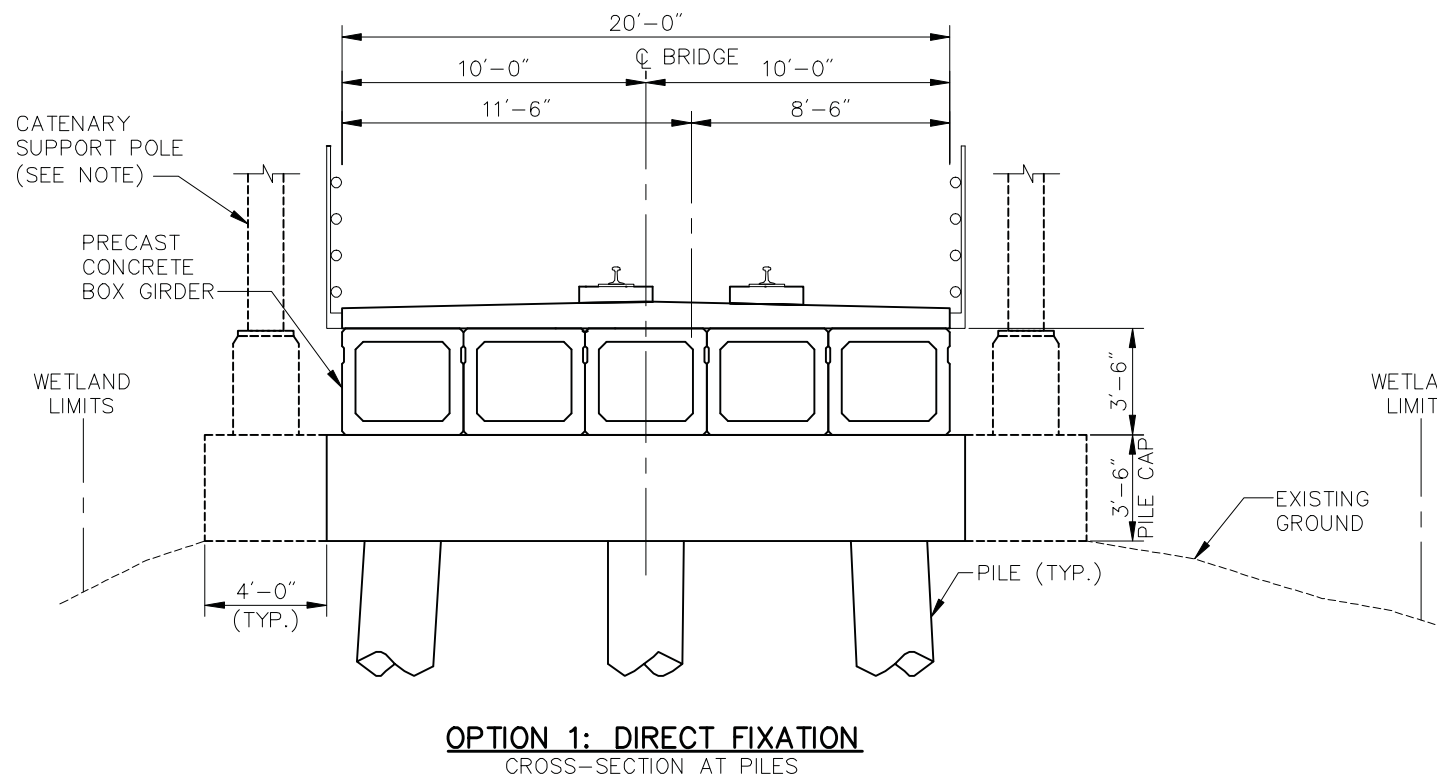
Printing Date: 7/1/2009
 File: \\labos\projects\10111.00\GIS\project\Phase2\TechRe\ports\TEC\Raynham.mxd

- Legend**
- Proposed Alternative Alignment
 - Limit of Work for Proposed Station
 - Limit of Permanent Impact for Proposed Rail
 - Platform
 - Town Boundaries
 - Protected Open Space
 - NHESP Priority Habitats of Rare Species
 - NHESP Estimated Habitats of Rare Wildlife
 - Open Water
 - Impacted NHESP Habitats
 - Area of Critical Environmental Concern (ACEC)

Figure 4.15-8
Raynham Place Station Site
Threatened & Endangered Species Polygons



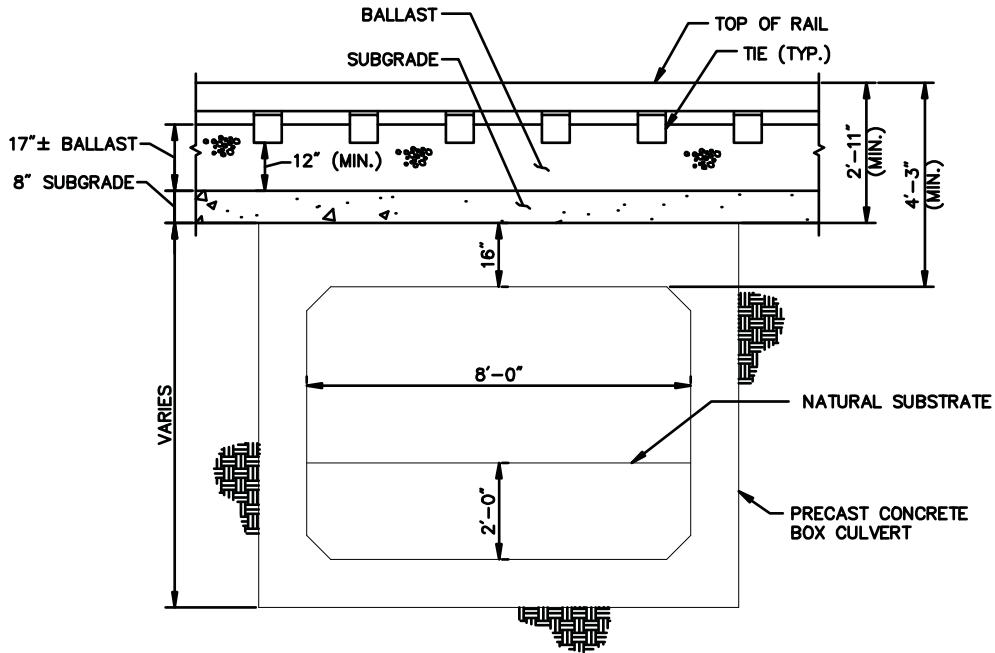
NOTE: EVERY SEVENTH PILE CAP WILL BE LENGTHENED TO SUPPORT THE CATENARY SUPPORT POLES (SPACED AT 210' O.C.).



I:\K:\proj\Boston\10111.00\cadd\plans\Stoughton\10111_27.005_HOCKOMOCK.dwg Printing Date: 7/2/2009

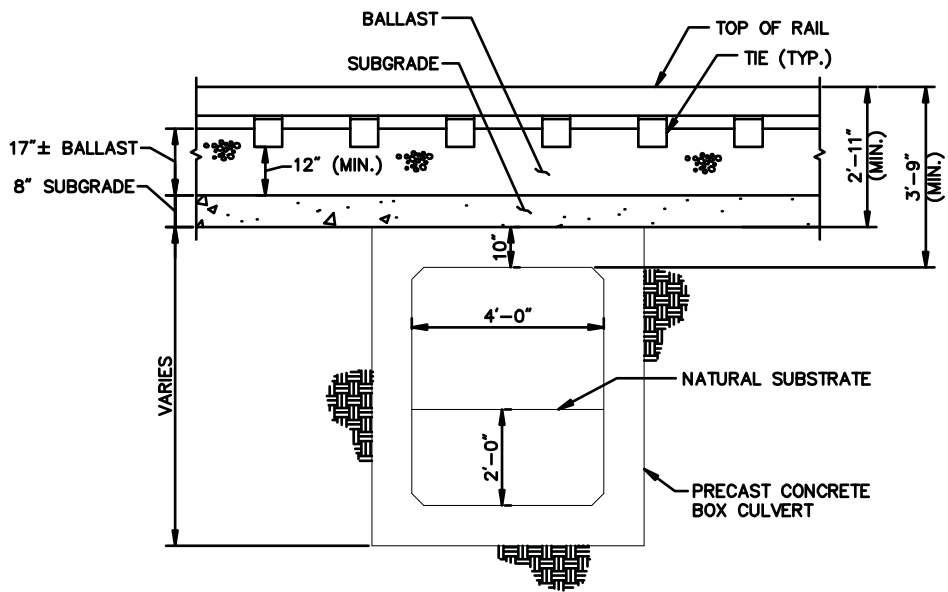


Figure 4.15-9
Trestle Through
Hancock Swamp



8'-0" WIDE PRECAST CONCRETE BOX CULVERT

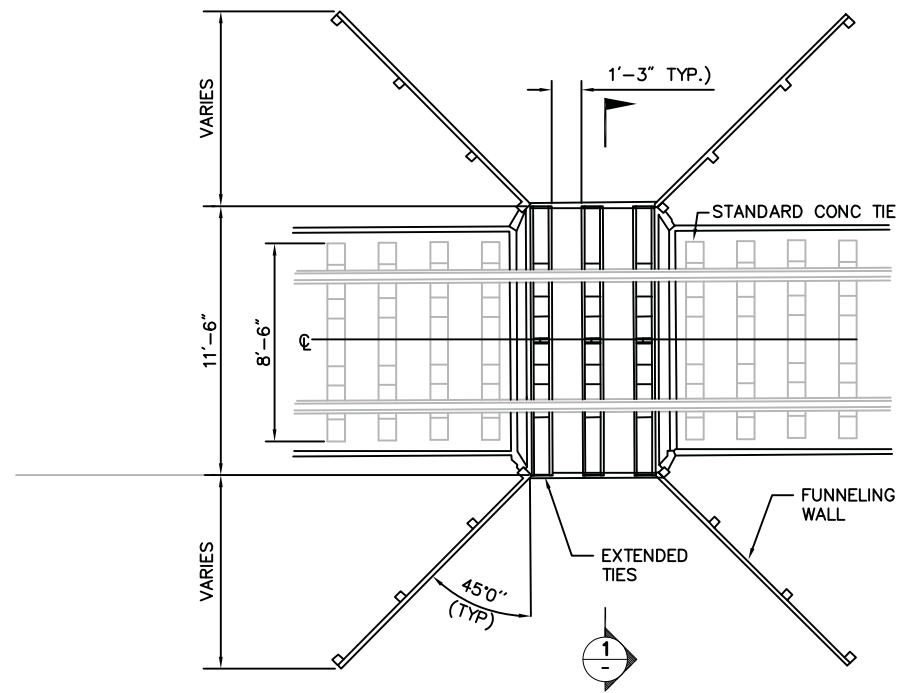
SCALE: 1/4" = 1'-0"



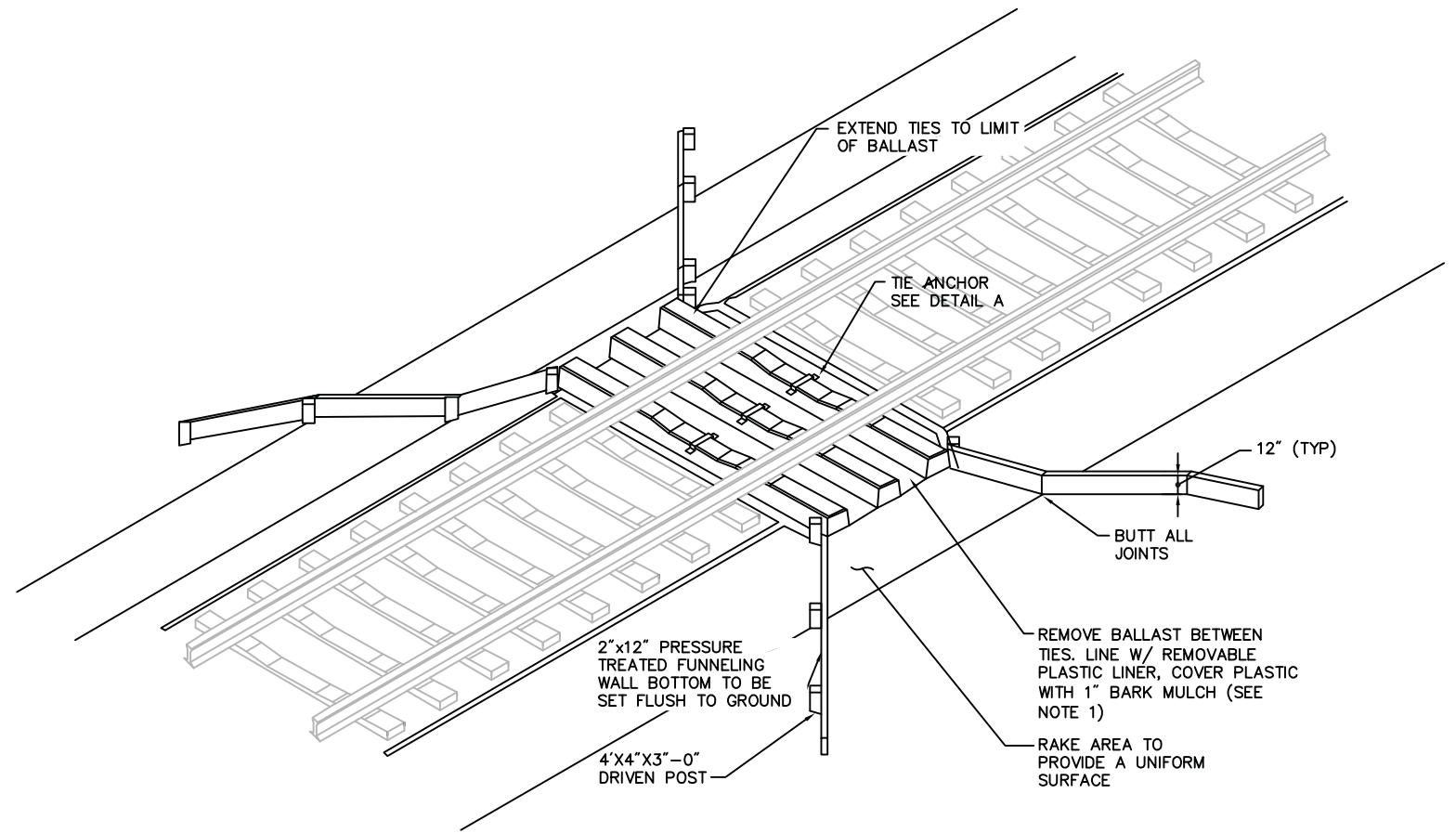
4'-0" WIDE PRECAST CONCRETE BOX CULVERT

SCALE: 1/4" = 1'-0"

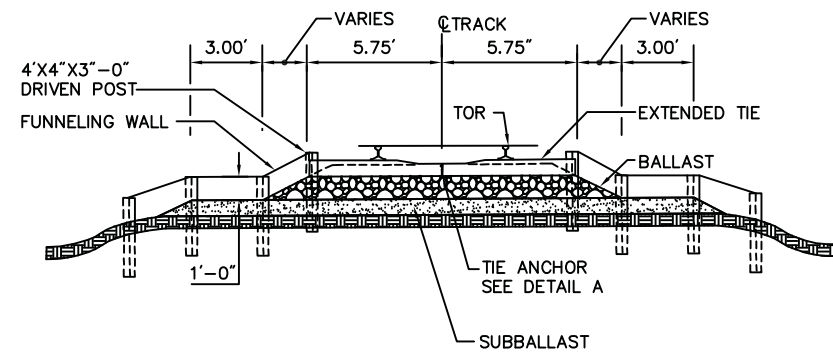
Figure 4.15-10
Typical Cross Sections - Concrete Block Culvert



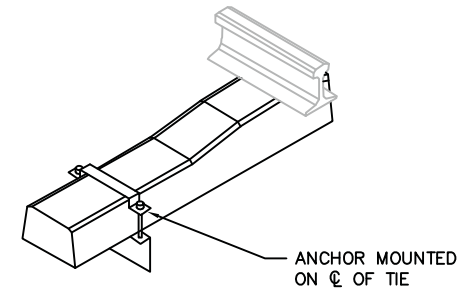
WILDLIFE CROSSING PLAN
NTS



WILDLIFE CROSSING
NTS



SECTION 1
NTS



TIE ANCHOR DETAIL A
NTS

NOTES:

1. CONTRACTOR TO REMOVE BALLAST BETWEEN TIES AND LINE AREA WITH 40 MIL HDPE FORMED TIGHTLY BETWEEN TIES. CONNECT TO CONC TIES WITH CONC ANCHORS

Figure 4.15-11

Wildlife Crossing -
Under-Rail Trough



Printing Date: 7/11/2009
 File: \\msbos\projects\10111\GIS\project\Phase2\TechReports\TELE\TE_EC_Attleboro_Mitigation_pg1.mxd

Legend

- MBTA Commuter Rail Station
- MBTA Commuter Rail
- - - Town Boundaries
- Proposed Alternative Alignment
- ▭ Limit of Work for Proposed Station/Layover Facility
- - - Limit of Permanent Impact for Proposed Rail
- ▭ Traction Power Station*
- ▭ Protected Open Space
- ▨ NHESP Priority Habitats of Rare Species
- ▨ NHESP Estimated Habitats of Rare Wildlife
- ▭ Open Water
- ▨ Impacted NHESP Habitats
- ▭ Area of Critical Environmental Concern (ACEC)
- ▭ Mitigation Measures

Index Map

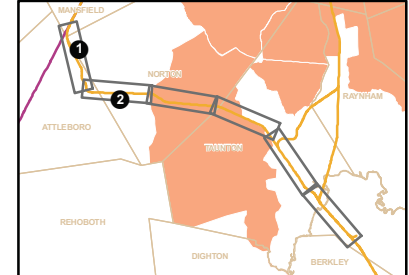
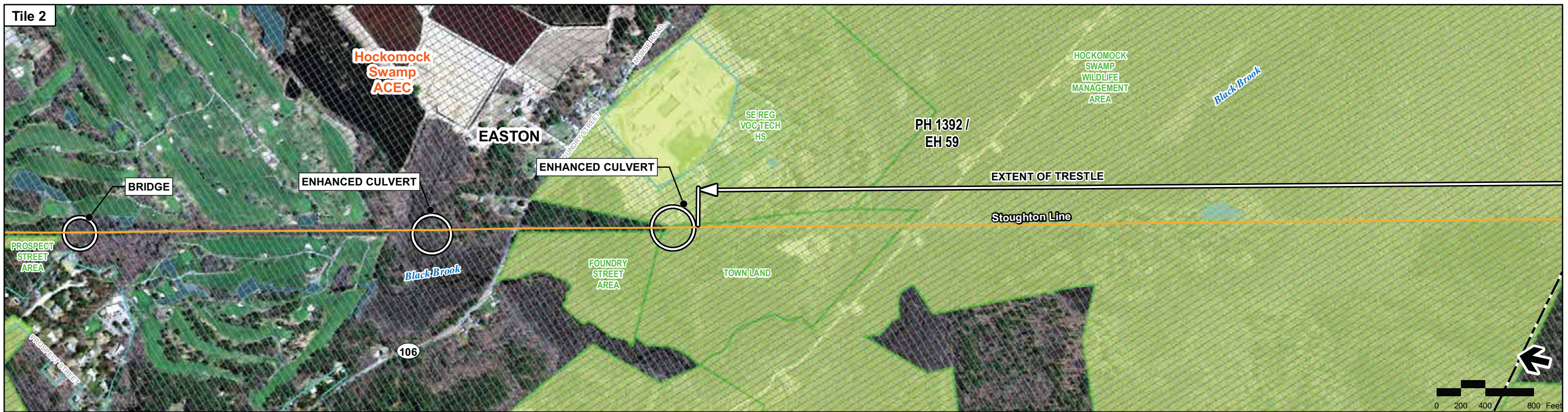


Figure 4.15-12
 Attleboro Alternatives - Attleboro Bypass and Attleboro Secondary
 Mitigation Measures
 Threatened & Endangered Species



Printing Date: 7/1/2009
 File: \\mbos\projects\10111_00\GIS\project\Phase2\TechReports\TELECITE_EC_Stoughton_Mitigation_pg1.mxd

Legend

- MBTA Commuter Rail Station
- MBTA Commuter Rail
- Town Boundaries
- Proposed Alternative Alignment
- ▭ Limit of Work for Proposed Station/Layover Facility
- ▭ Limit of Permanent Impact for Proposed Rail
- ▭ Traction Power Station*
- ▭ Protected Open Space
- ▭ NHESP Priority Habitats of Rare Species
- ▭ NHESP Estimated Habitats of Rare Wildlife
- ▭ Open Water
- ▭ Impacted NHESP Habitats
- ▭ Area of Critical Environmental Concern (ACEC)
- ▭ Mitigation Measures

Index Map

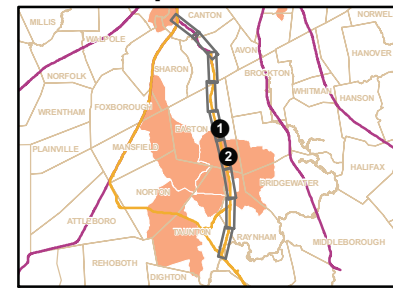
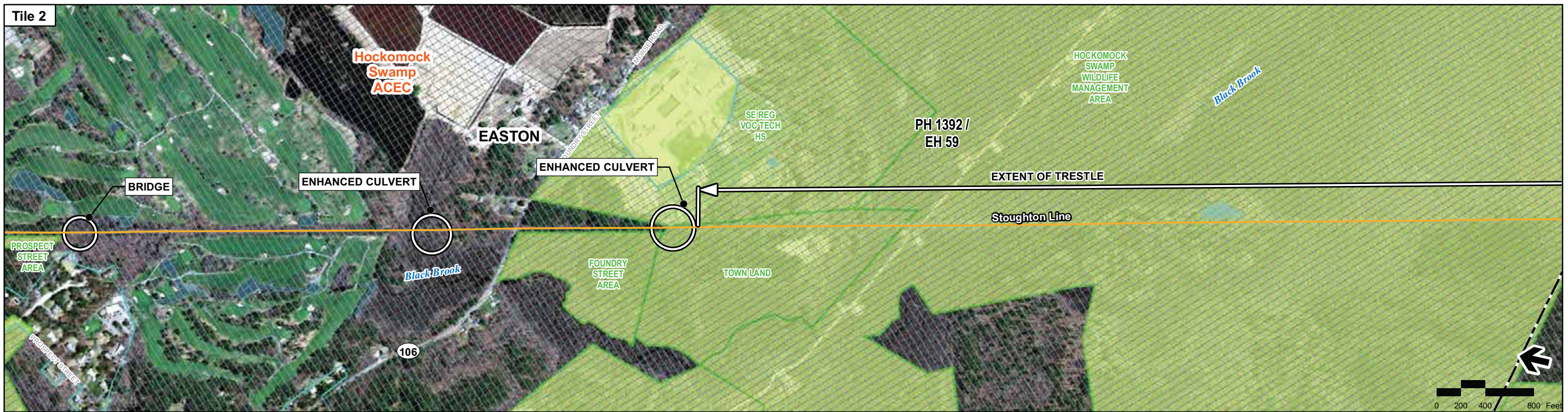


Figure 4.15-13
 Stoughton Alternatives - Stoughton Line
 (Sheet 1 of 2)
 Mitigation Measures
 Threatened & Endangered Species



Printing Date: 7/11/2009
 File: \\mbos\projects\10111_00\GIS\project\Phase2\TechReports\TELECITE_EC_Stoughton_Mitigation_pg1.mxd

Legend

- MBTA Commuter Rail Station
- MBTA Commuter Rail
- Town Boundaries
- Proposed Alternative Alignment
- ▭ Limit of Work for Proposed Station/Layover Facility
- ▭ Limit of Permanent Impact for Proposed Rail
- ▭ Traction Power Station*
- ▭ Protected Open Space
- ▭ NHESP Priority Habitats of Rare Species
- ▭ NHESP Estimated Habitats of Rare Wildlife
- ▭ Open Water
- ▭ Impacted NHESP Habitats
- ▭ Area of Critical Environmental Concern (ACEC)
- ▭ Mitigation Measures

Index Map

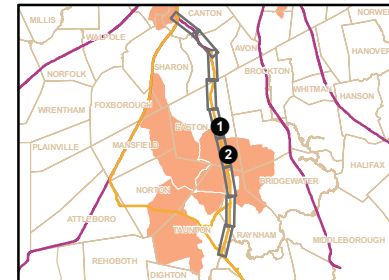
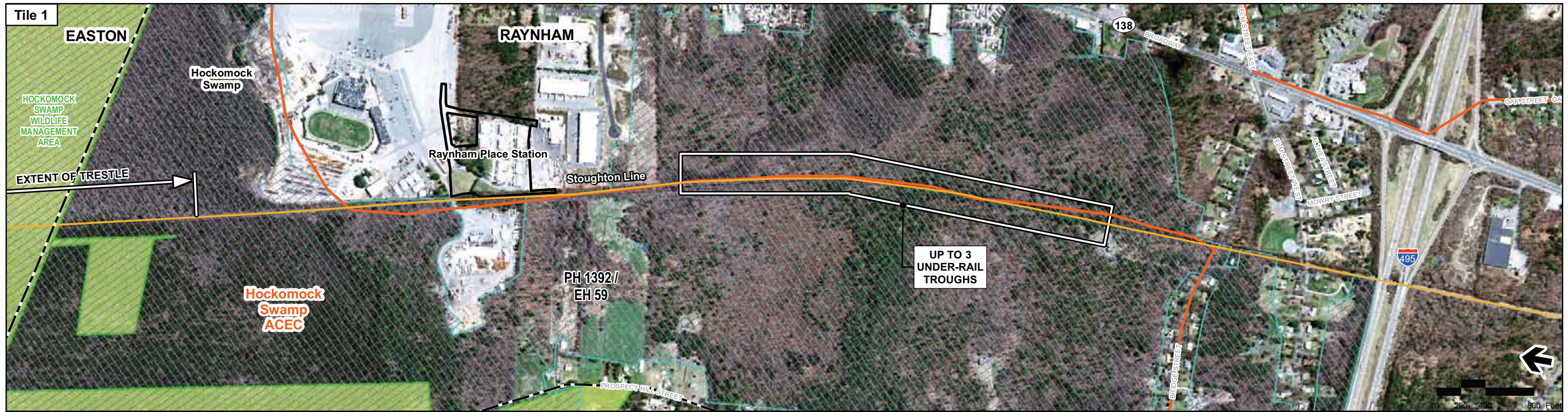


Figure 4.15-13a
 Stoughton Alternatives - Stoughton Line
 (Sheet 1 of 2)
 Mitigation Measures
 Threatened & Endangered Species



Printing Date: 7/11/2009
 File: \\msboston\projects\10111_00\GIS\project\Phase2\TechReports\TELETYPE_EC_Stoughton_Mitigation_pg2.mxd

Legend

- MBTA Commuter Rail Station
- MBTA Commuter Rail
- Town Boundaries
- Proposed Alternative Alignment
- Limit of Work for Proposed Station/ Layover Facility
- Limit of Permanent Impact for Proposed Rail
- Traction Power Station*
- Protected Open Space
- NHESP Priority Habitats of Rare Species
- NHESP Estimated Habitats of Rare Wildlife
- Open Water
- Impacted NHESP Habitats
- Area of Critical Environmental Concern (ACEC)
- Mitigation Measures

Index Map

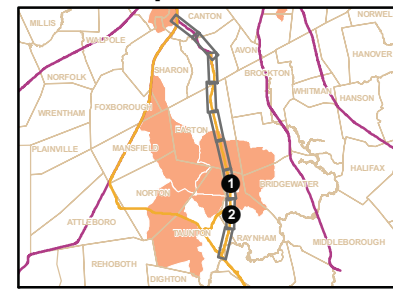


Figure 4.15-13b
 Stoughton Alternatives - Stoughton Line
 (Sheet 2 of 2)
 Mitigation Measures
 Threatened & Endangered Species

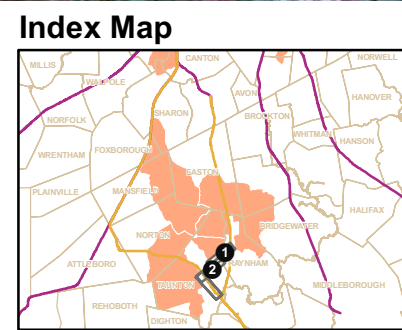
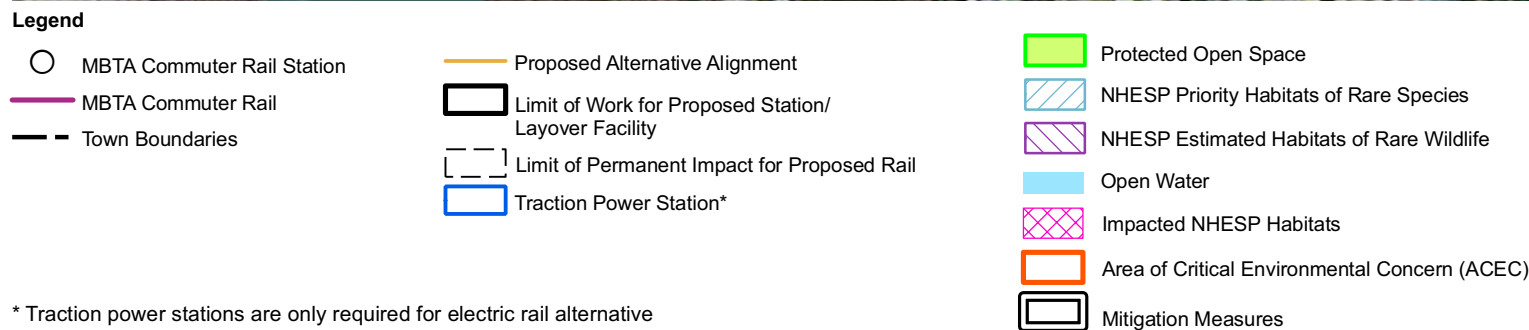
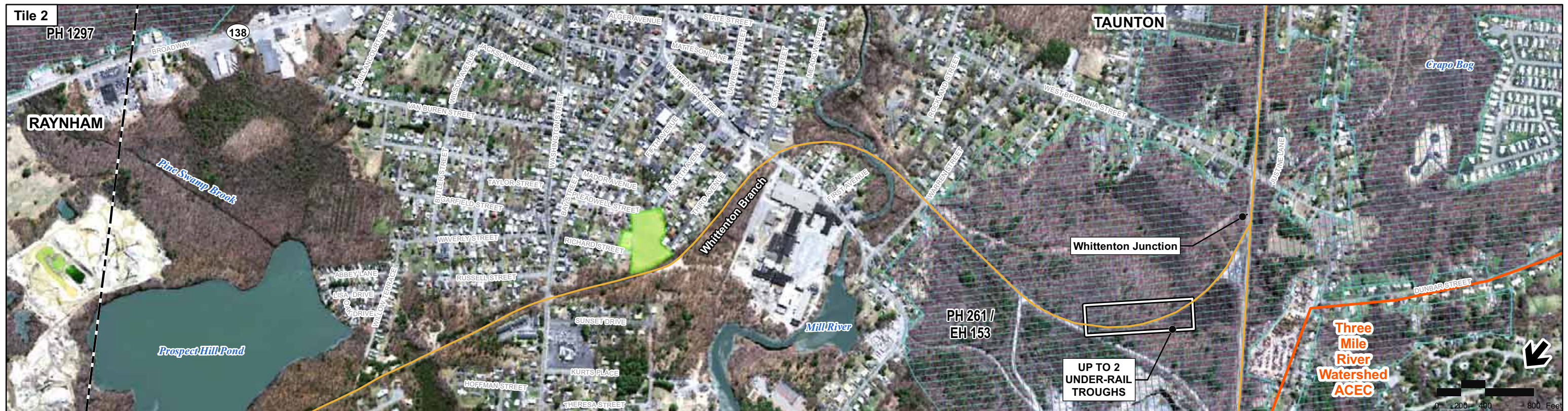


Figure 4.15-14

Whittenton Alternatives - Whittenton Branch

Mitigation Measures
Threatened & Endangered Species