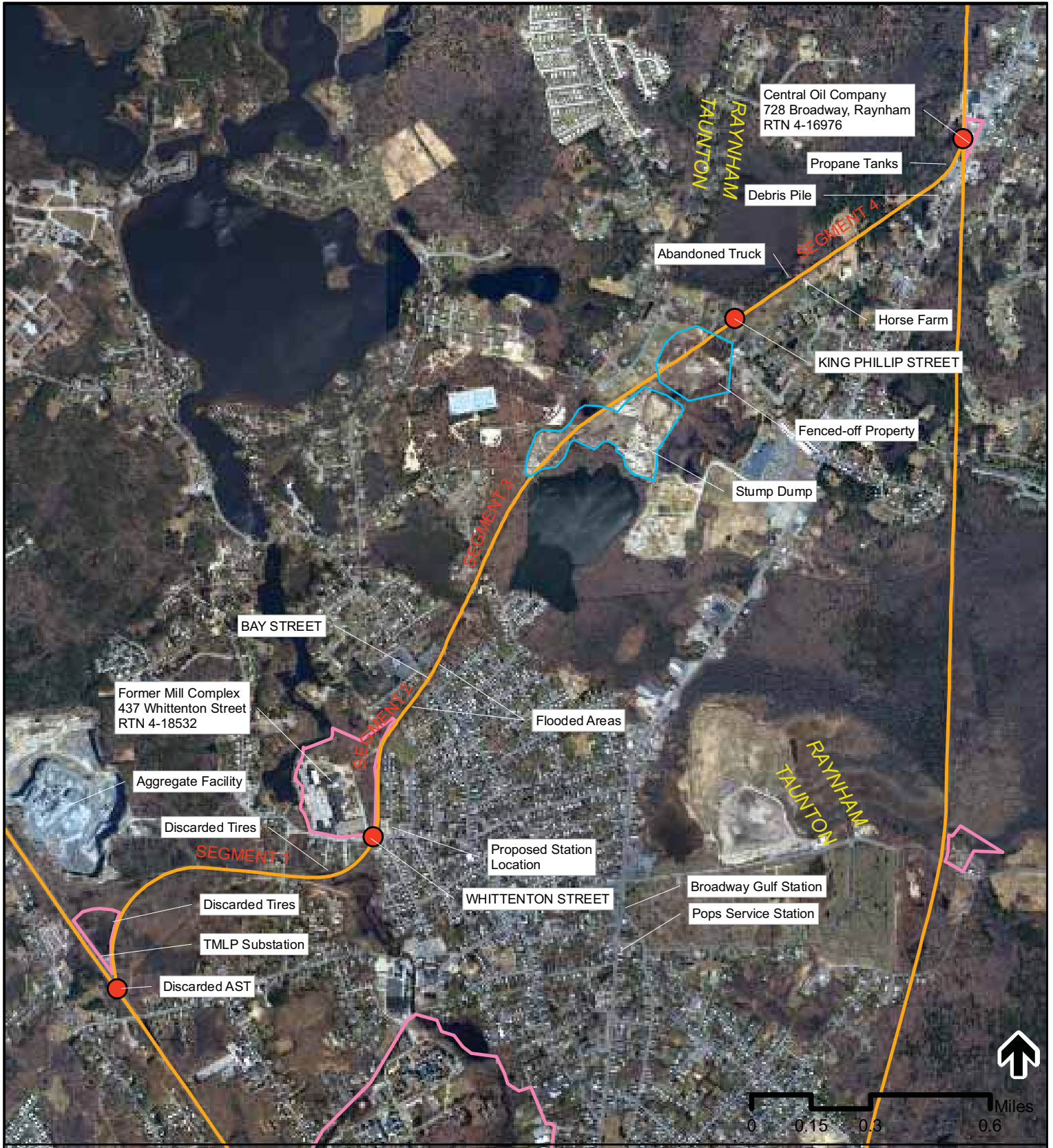


**Legend**

- Site Location
- Proposed Alternative
- Commuter Rail

Figure 4.12-1

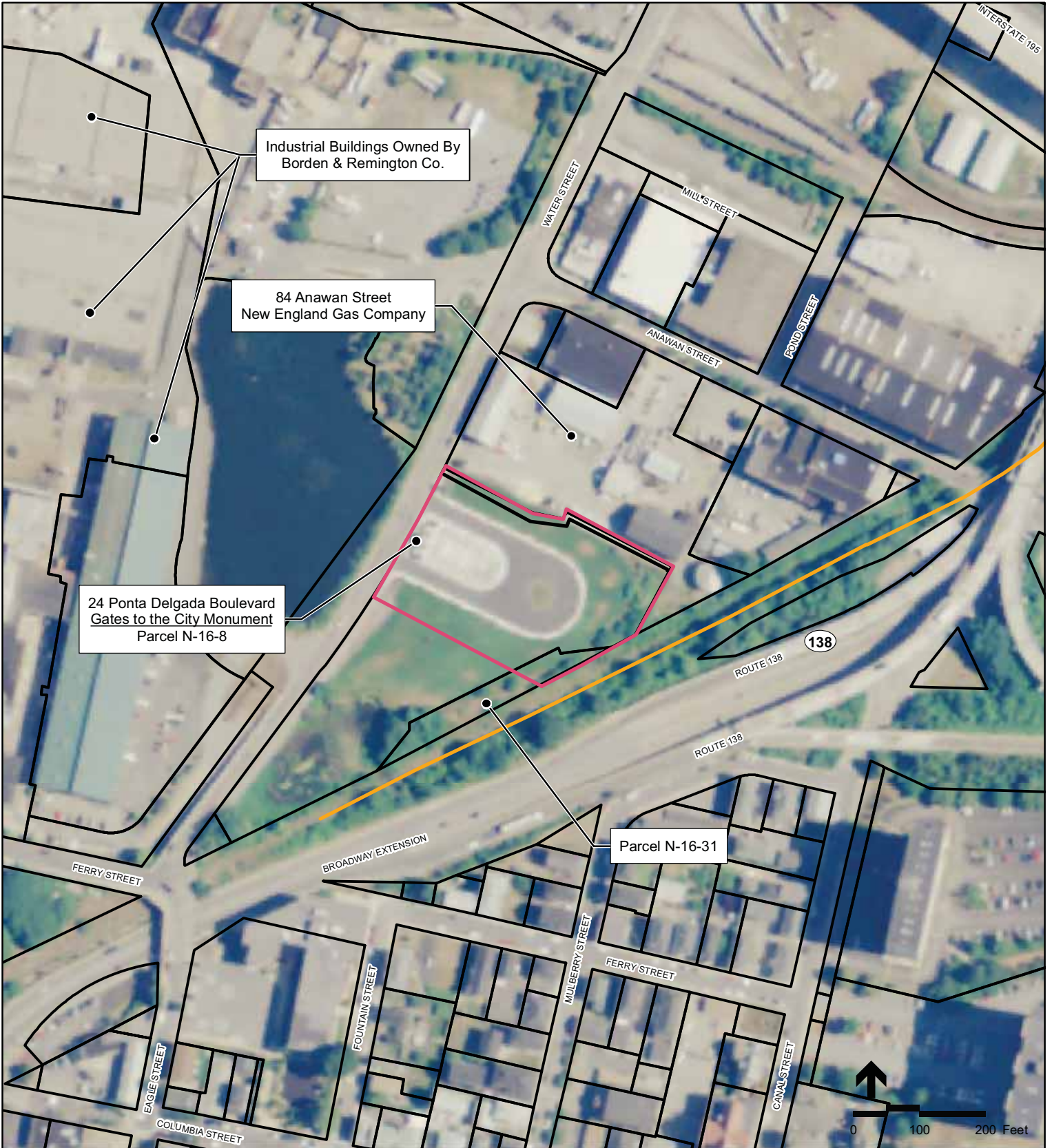
Site Plan - Attleboro Bypass



**Legend**

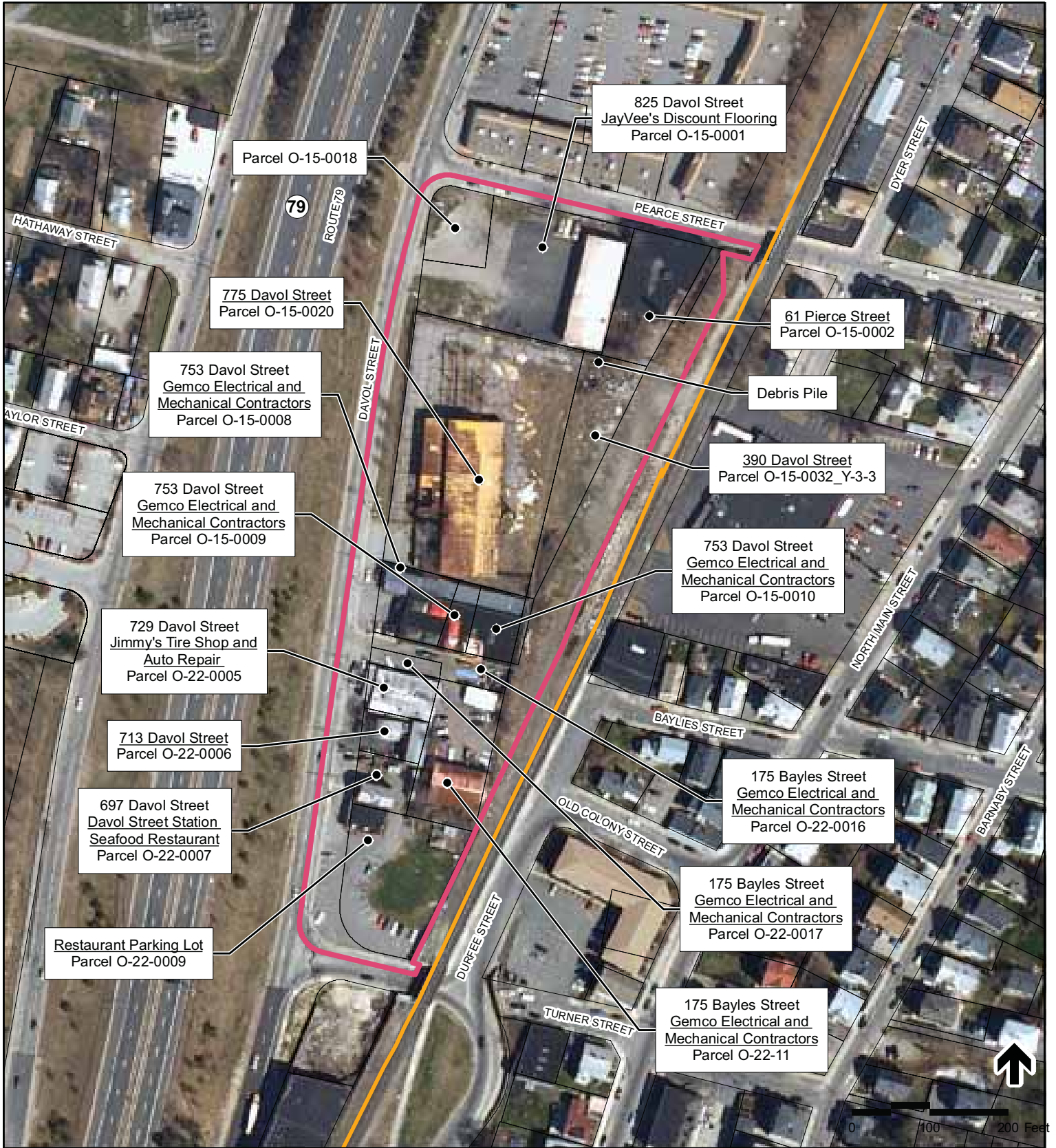
- Segments
- Proposed Alternative
- Proposed Location Site

Figure 4.12-2
Site Plan - Whittenton Branch



- Legend**
- Proposed Alternative
  - Proposed Station Site
  - Parcel Boundary

Figure 4.12-3  
Site Plan - Battleship Cove Station



- Legend**
- Proposed Alternative
  - Proposed Station Site
  - Parcel Boundary

Figure 4.12-4  
 Site Plan - Fall River Depot Station

Wednesday, February 4, 2009 2:17:32 PM  
Z:\6295-VHB\MAP DOCUMENTS\Raynham\Raynham Site Plan Map\_VHBTemp.mxd



**Legend**

- Proposed Alternative
- Proposed Station Site

Figure 4.12-5  
Site Plan - Freetown Station

Wednesday, February 4, 2009 2:17:32 PM  
Z:\6295-VHB\MAP DOCUMENTS\Raynham\Raynham Site Plan Map\_VHBTemp.mxd



**Legend**

- Proposed Alternative
- Limit of Work of Proposed Station

Figure 4.12-6  
Site Plan - King's Highway Station

Wednesday, February 4, 2009 1:38:45 PM  
Z:\6295-VH\BMAP\_DOCUMENTS\WhalesTooth\Site Plan Map\_VHBTmp.mxd



**Legend**



-  Site Location
-  Proposed Alternative

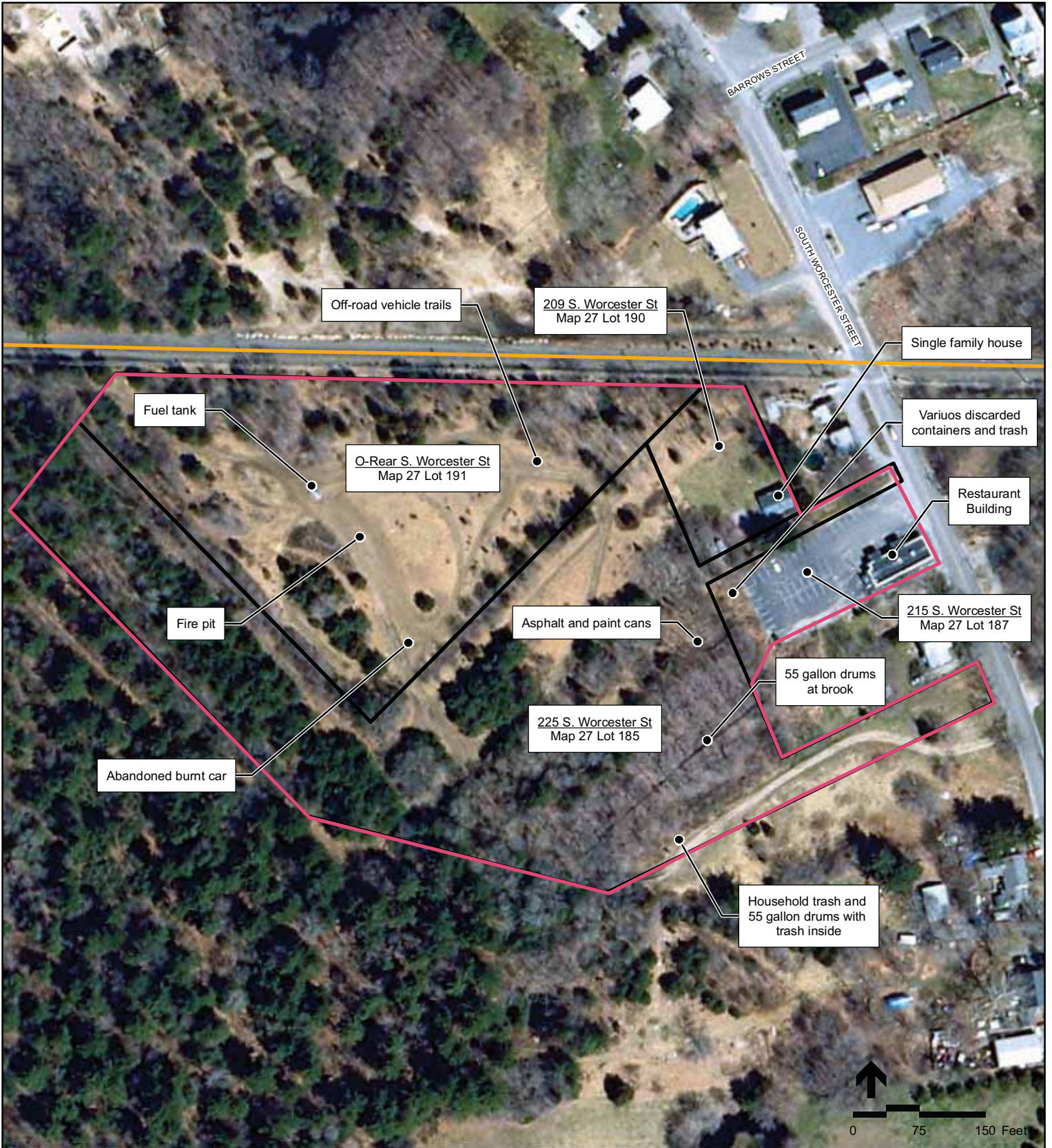
Figure 4.12-7  
Site Plan - Whale's Tooth Station



- Legend**
- Proposed Station Site
  - Proposed Alternative
  - Parcel Boundary

Figure 4.12-8  
Site Plan - Taunton Depot Station





**Legend**




-  Proposed Alternative
-  Proposed Station Site
-  Parcel Boundary

Figure 4.12-9  
Site Plan - Barrowsville Station



**Legend**




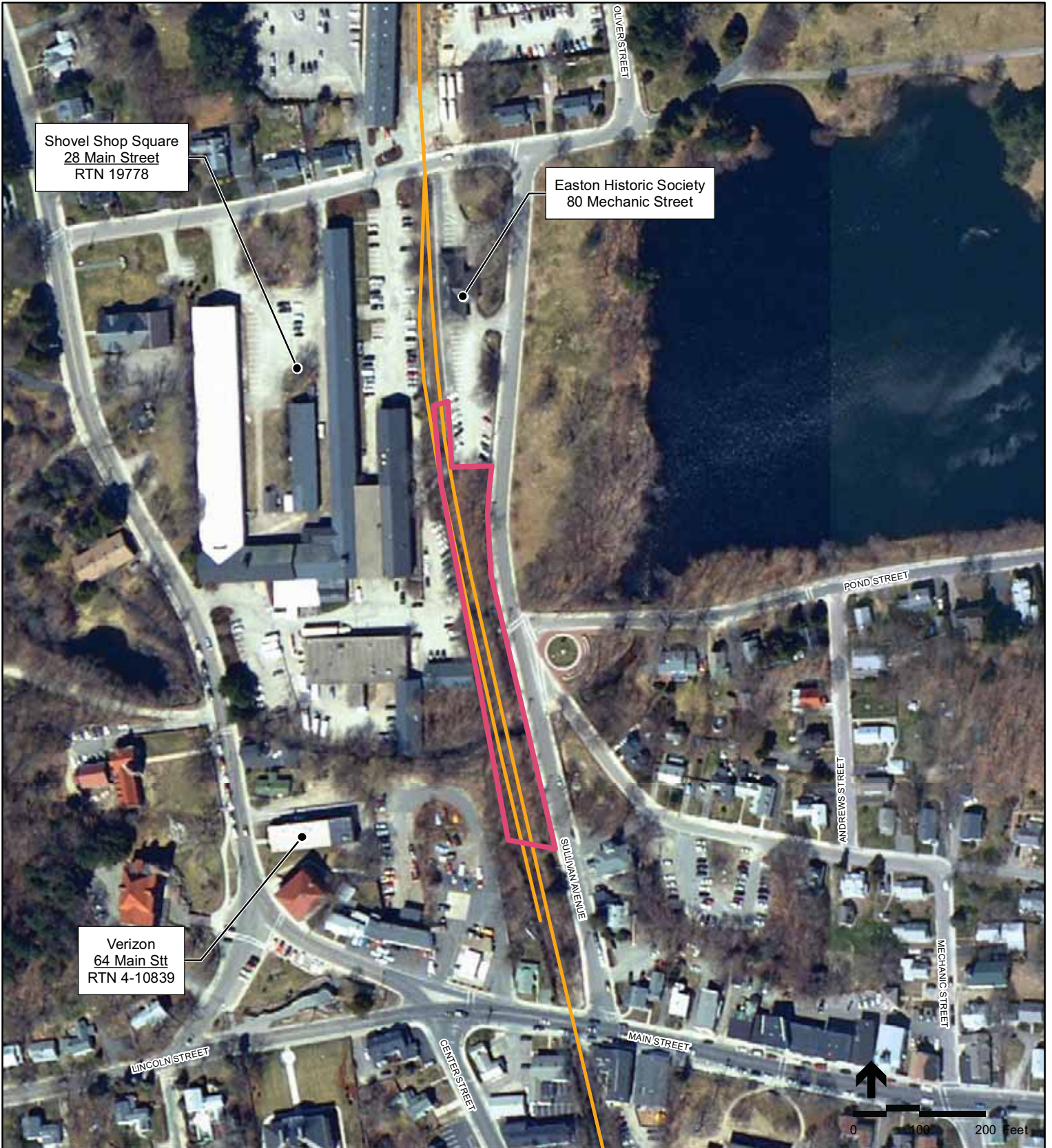
-  Proposed Station Site
-  Proposed Alternative
-  Parcel Boundary

Figure 4.12-10  
Site Plan - Downtown Taunton Station

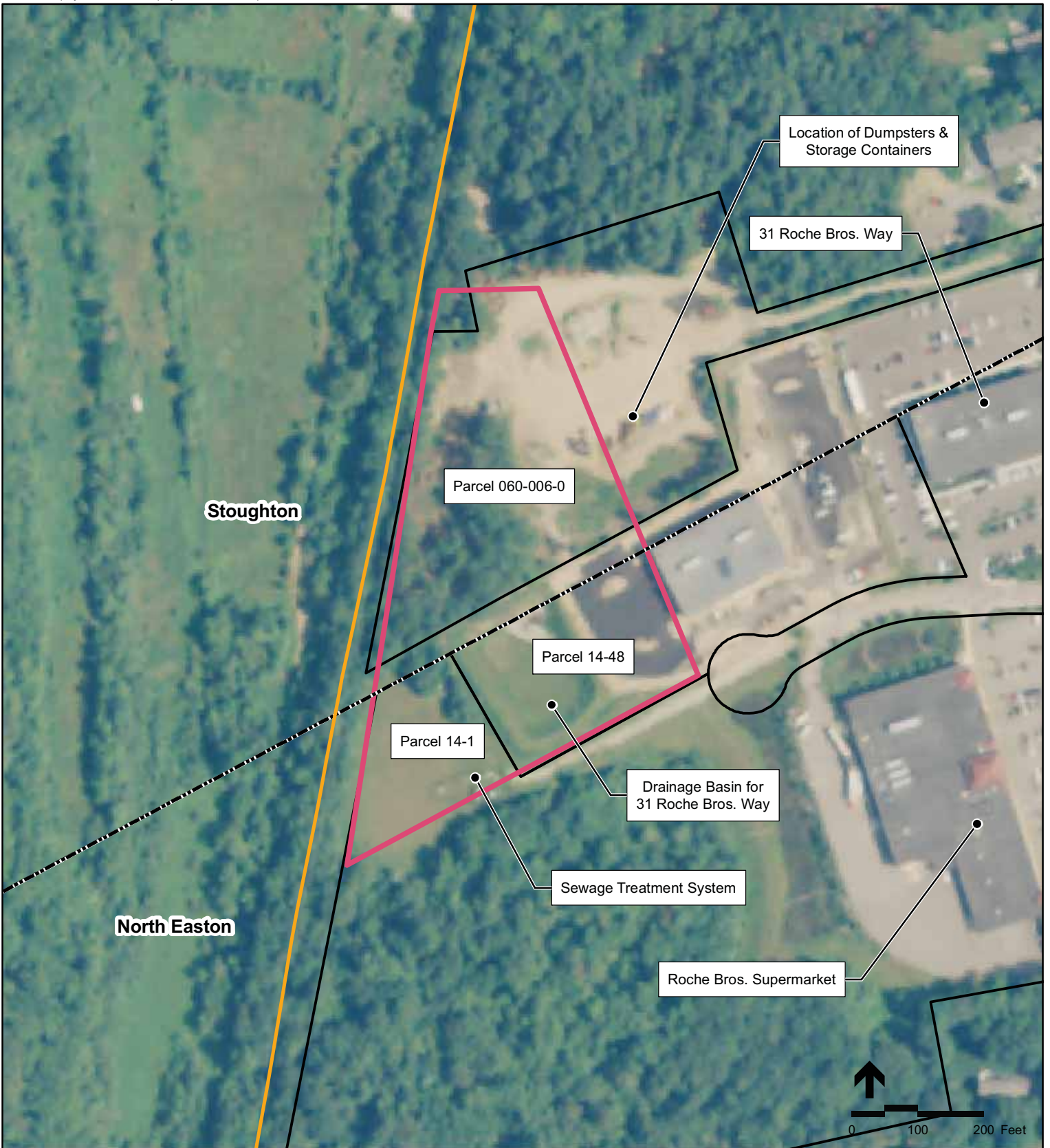


**Legend**

- Proposed Alternative
- Proposed Station Site

Figure 4.12-11

Site Plan - Easton Village Station



- Legend**
- Proposed Alternative
  - Town Boundaries
  - Proposed Station Site
  - Parcel Boundary

Figure 4.12-12  
Site Plan - North Easton Station

Wednesday, February 4, 2009 2:17:32 PM  
Z:\6295-VHB\MAP DOCUMENTS\Raynham\Raynham Site Plan\_Map\_VHBTemp.mxd

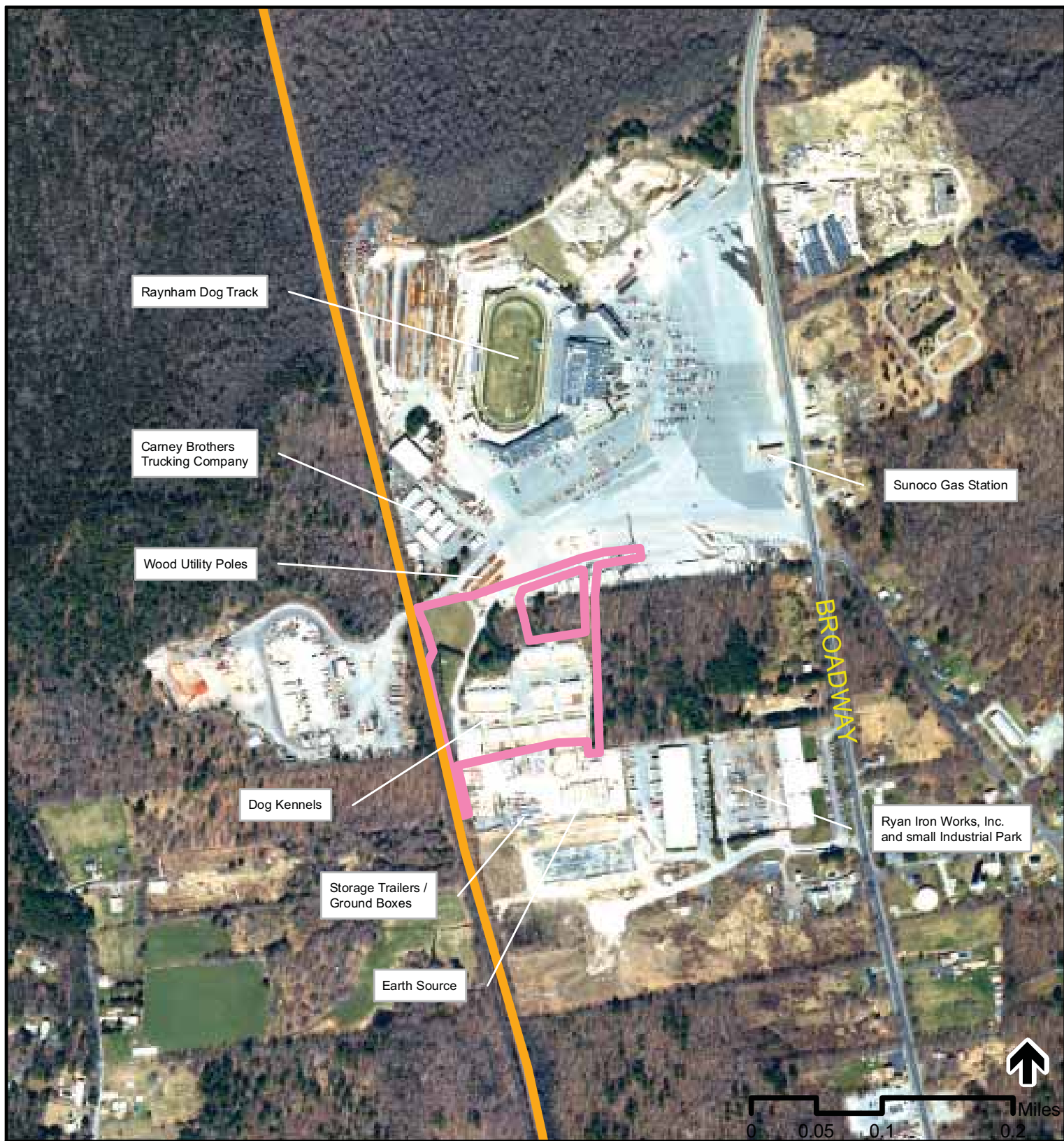
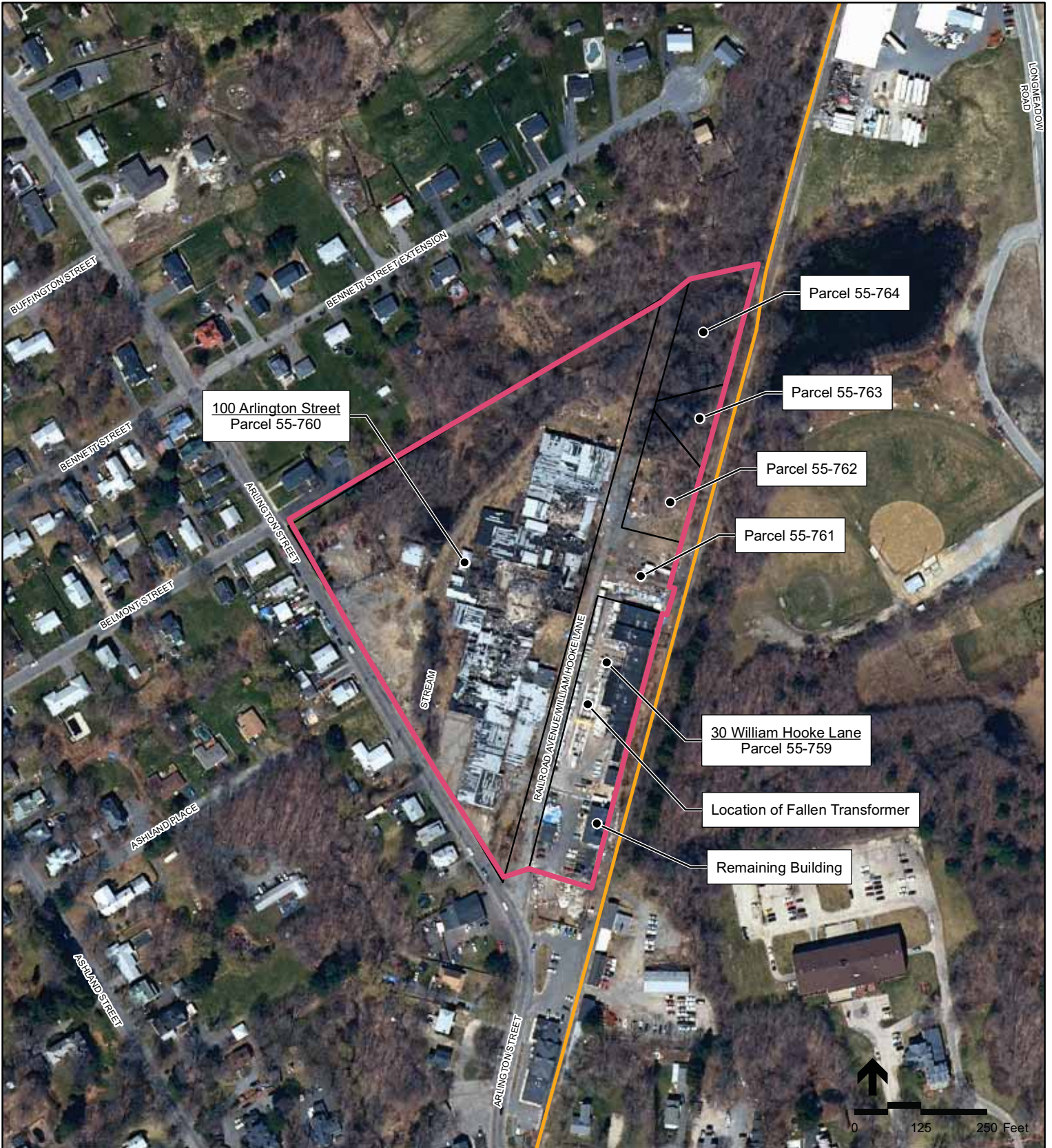


Figure 4.12-13  
Site Plan - Raynham Place Station

**Legend**

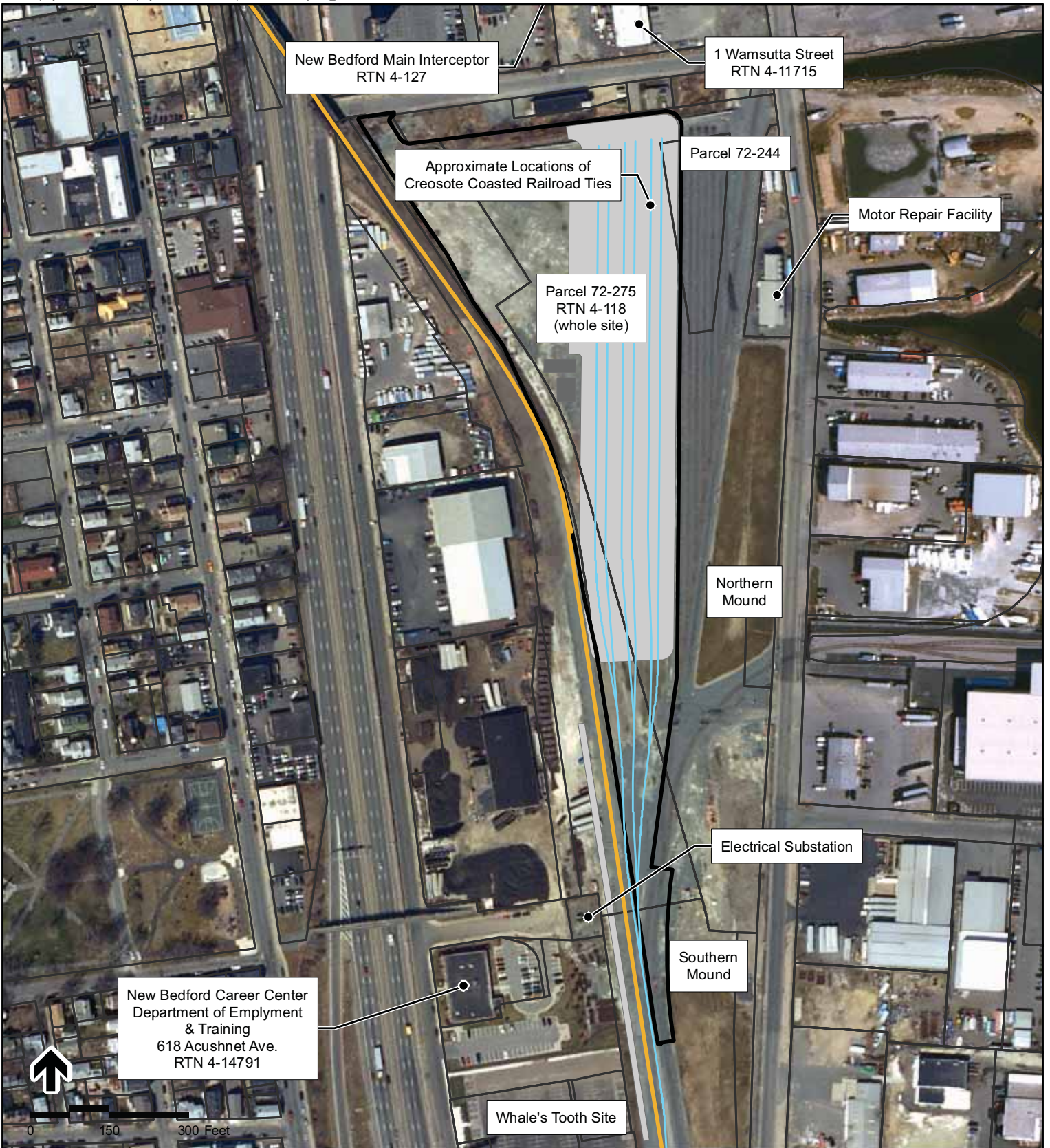
- Proposed Alternative
- Proposed Station Site



**Legend**

- Proposed Alternative
- ▭ Proposed Station Site
- ▭ Parcel Boundary

Figure 4.12-14  
Site Plan - Taunton Station



- Legend**
- Track Centerline
  - Proposed Alternative
  - Limit of Permanent Impact for Proposed Layover Facility
  - Proposed Pavement
  - Proposed Building
  - Parcel Boundary

Figure 4.12-15

---

Site Plan - Wamsutta Layover



**Legend**







-  Proposed Alternative
-  Track Centerline
-  Limit of Permanent Impact for Proposed Layover Facility
-  Proposed Pavement
-  Proposed Building
-  Parcel Boundary

Figure 4.12-16

Site Plan - Church Street Layover










- Legend**
-  Limit of Permanent Impact for Proposed Layover Facility
  -  Parcel Boundary
  -  Track Centerline
  -  Proposed Building
  -  Proposed Pavement

Figure 4.12-17

Site Plan - ISP Layover



**Legend**






-  Proposed Alternative
-  Proposed Building
-  Proposed Edge of Pavement
-  Limit of Permanent Impact for Proposed Layover Facility
-  Parcel Boundary

Figure 4.12-18

Site Plan -  
Weaver's Cover East Layover



**Legend**







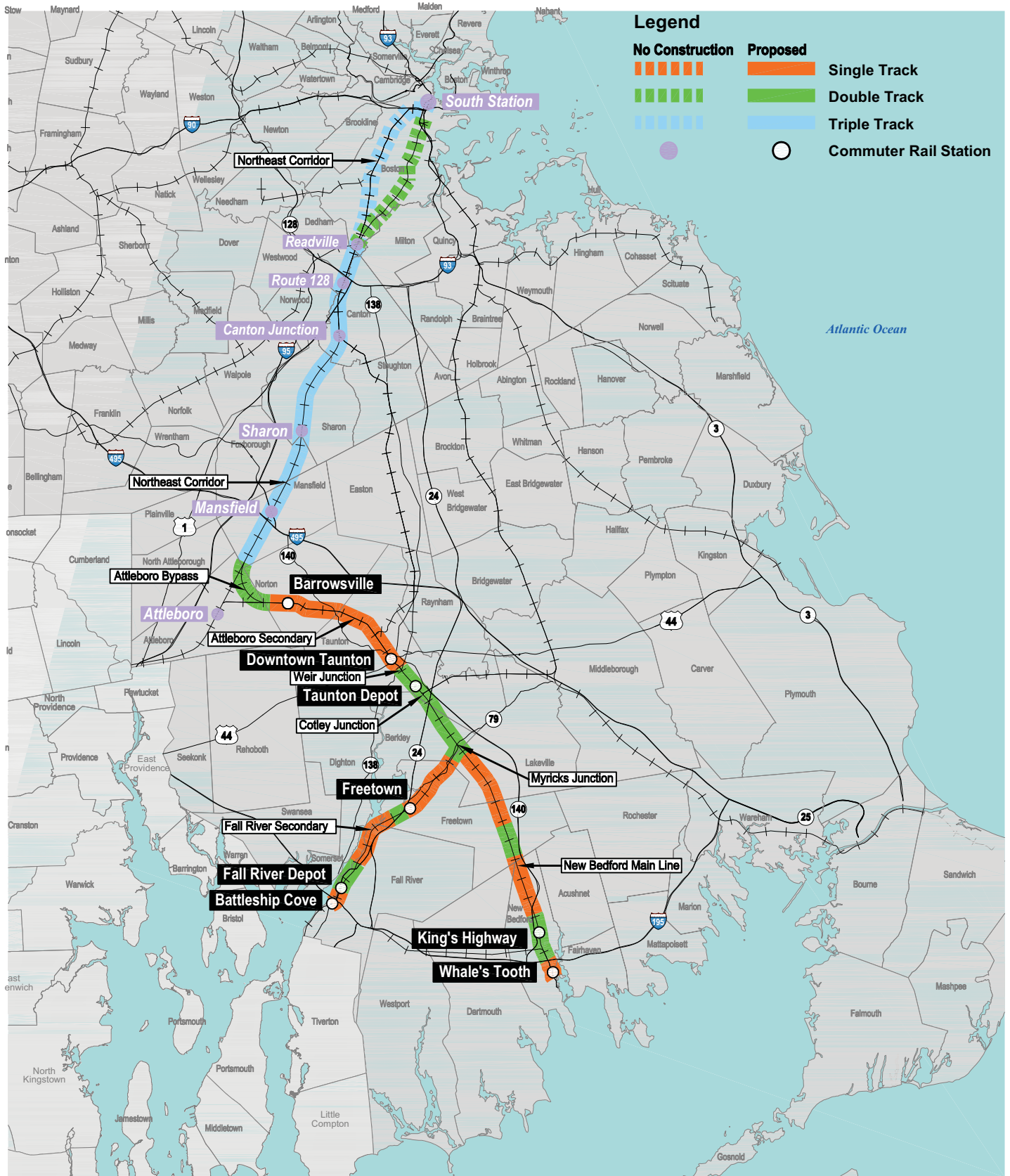
-  Proposed Alternative
-  Proposed Building
-  Proposed Edge of Pavement
-  Limit of Permanent Impact for Proposed Layover Facility
-  Track Centerline
-  Parcel Boundary

Figure 4.12-19

Site Plan -  
Weaver's Cove West Layover



W:\MDC\projects\1011103\GIS\output\Phase2\FinalReport\Map\AttleboroAlternatives\_Environment\Consensus\_Figures\10111\_AtlleboroNew.dwg Printing Date: 9/8/2019

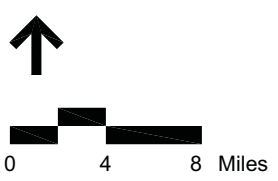
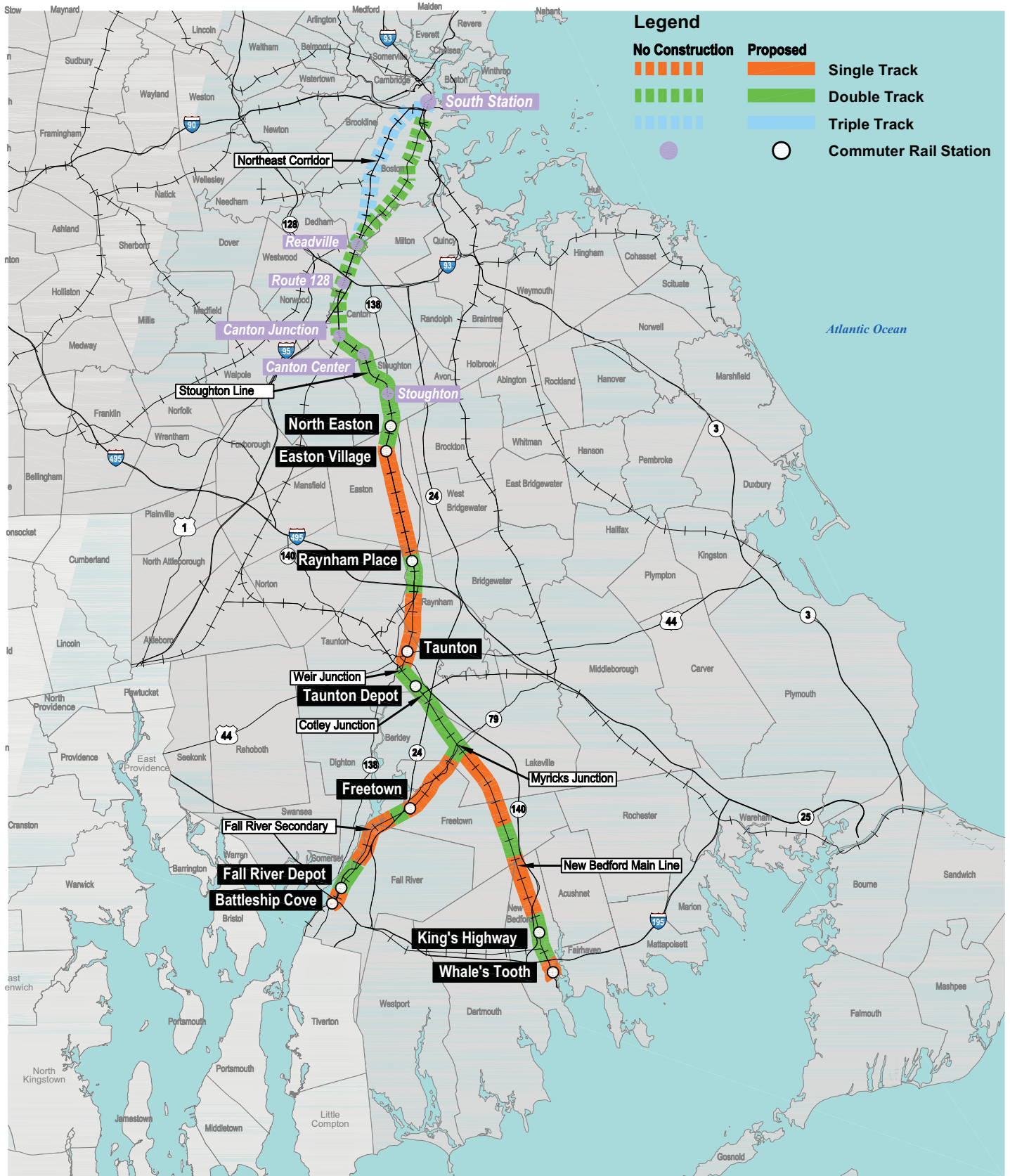


Figure 4.12-20  
Attleboro Alternatives



W:\M05\projects\10111\05\05\map\Phase2\FinalReport\Map\Environmental\_Consequences\_Figures\10111\_AltOverview.dwg Printing Date: 9/8/2019

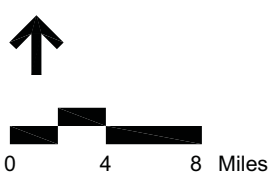
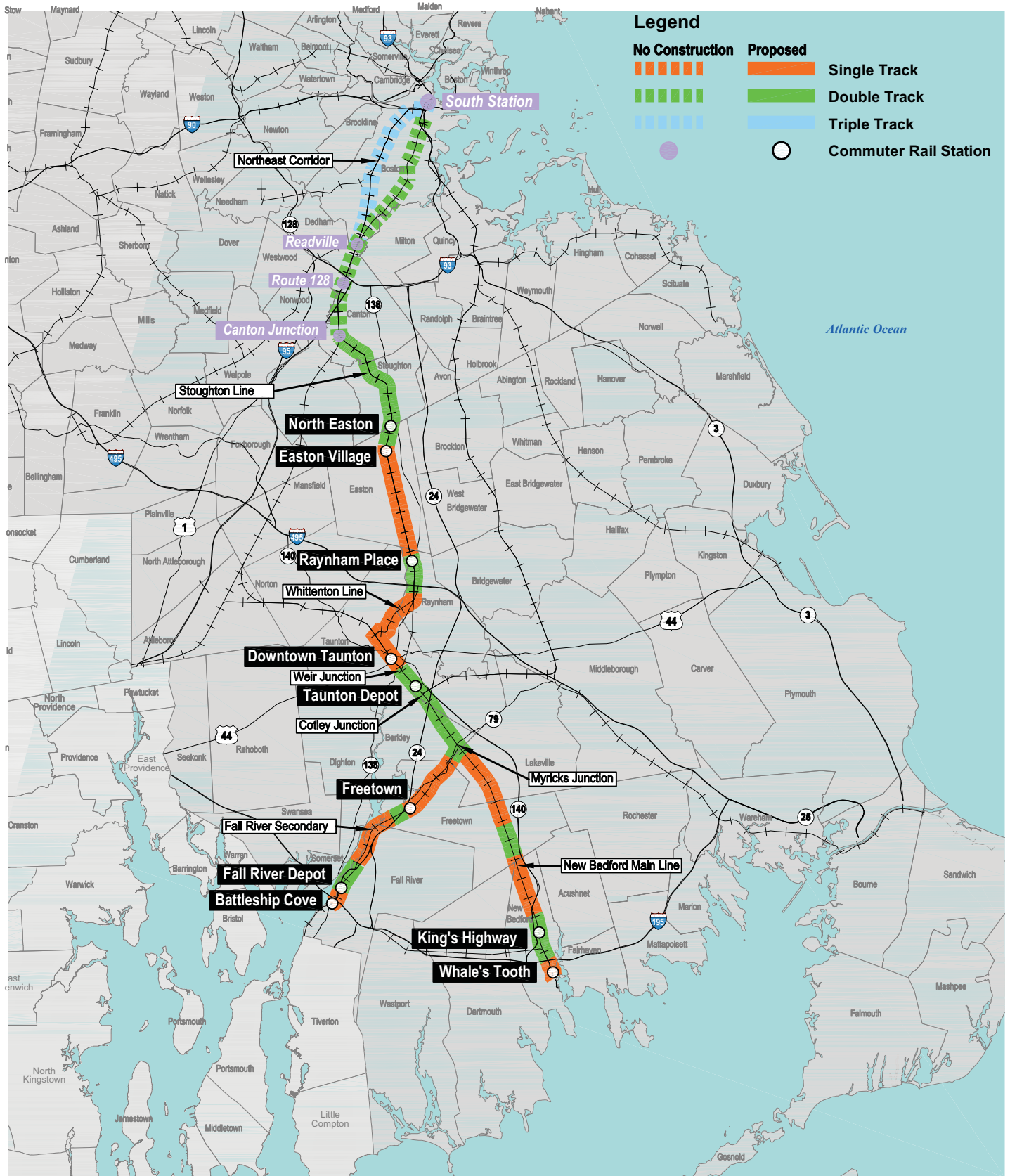


Figure 4.12-21  
Stoughton Alternatives



W:\MDC\projects\10111\05\05\map\Phase2\FinalReport\Map\Environmental\_Consequences\_Figures\10111\_AltOverview.dwg Printing Date: 9/8/2019

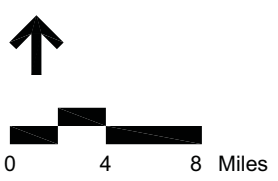
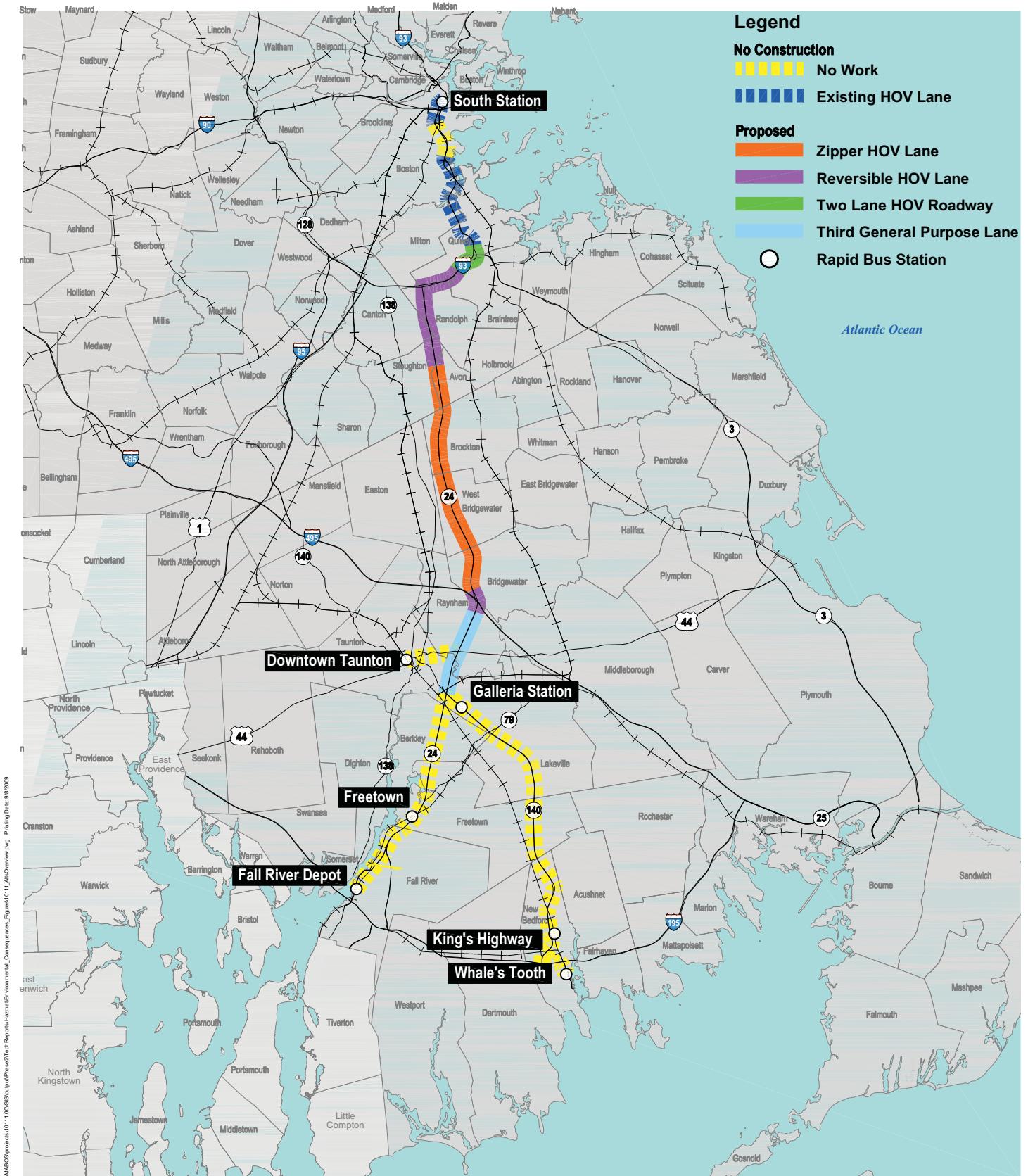


Figure 4.12-22  
Whittenton Alternatives



W:\MDC\projects\10111\10111\_05\05\05\Phase2\FinalReport\Hamam\Environmental\_Consequences\_Figures\10111\_Alt2\Overview.dwg Printing Date: 10/2/2019

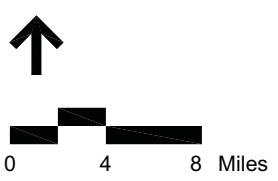


Figure 4.12-23  
Rapid Bus Alternative