

Muddy River Flood Control Enhancement Project



US Army Corp of Engineers
New England District



Town of Brookline
Massachusetts



November 2011



Purpose and Need:

- Improve Water Quality through increased Detention
- Reduce Flooding in the Fenway District of Boston and Brookline by Augmenting Storm Surge Storage
- Enhance Aquatic/Riparian Habitat
- Enhance Recreational Use of the Emerald Necklace Parklands

Project Proponents:

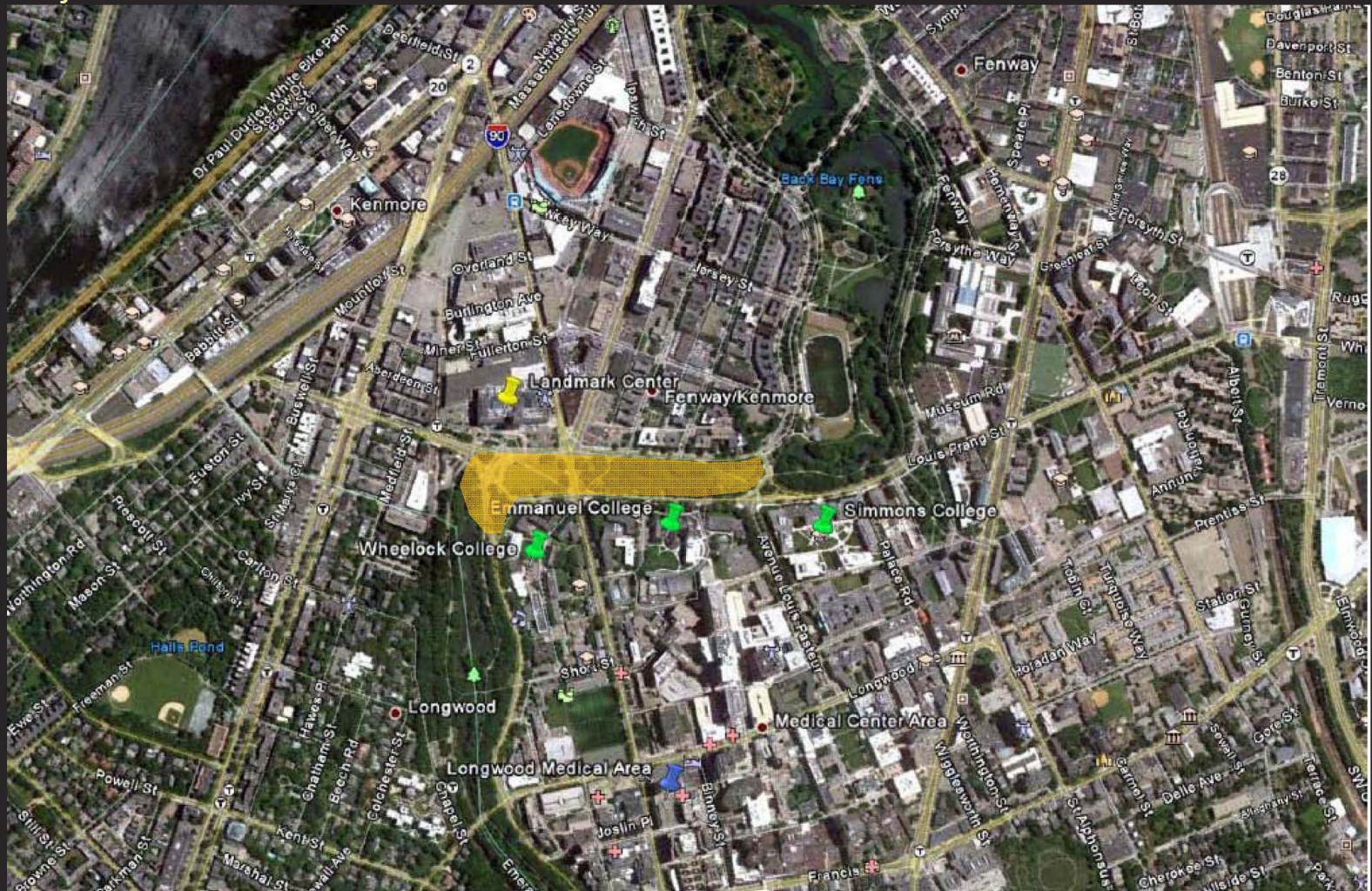
Massachusetts Executive Office of Energy and Environmental Affairs

Department of Conservation and Recreation (DCR)

City of Boston

Town of Brookline

Project Area





Proposed Project Activities and Improvements

Primary Objectives:

- Reduction of Flood Potential
- Day lighting of the old Sears Parking Lot for Environmental Restoration
- Improved Landscaping and Public Space
- Utility Relocation
- Drainage Culvert Replacement and Augmentation

Secondary Benefits:

- Removal of the Brookline Avenue “Jug Handle” Turning Roadway
- Improved Connectivity between the River way and Park Drive
- Improved Pedestrian Connectivity between Wheelock College and MBTA Green Line



TRAFFIC CONTROL DURING CONSTRUCTION

Considerations:

- Emergency Response
- Daily Traffic Volume
- Event Management
- Pedestrian Traffic
- Public Transportation
- Abutter Access and Needs

Approach:

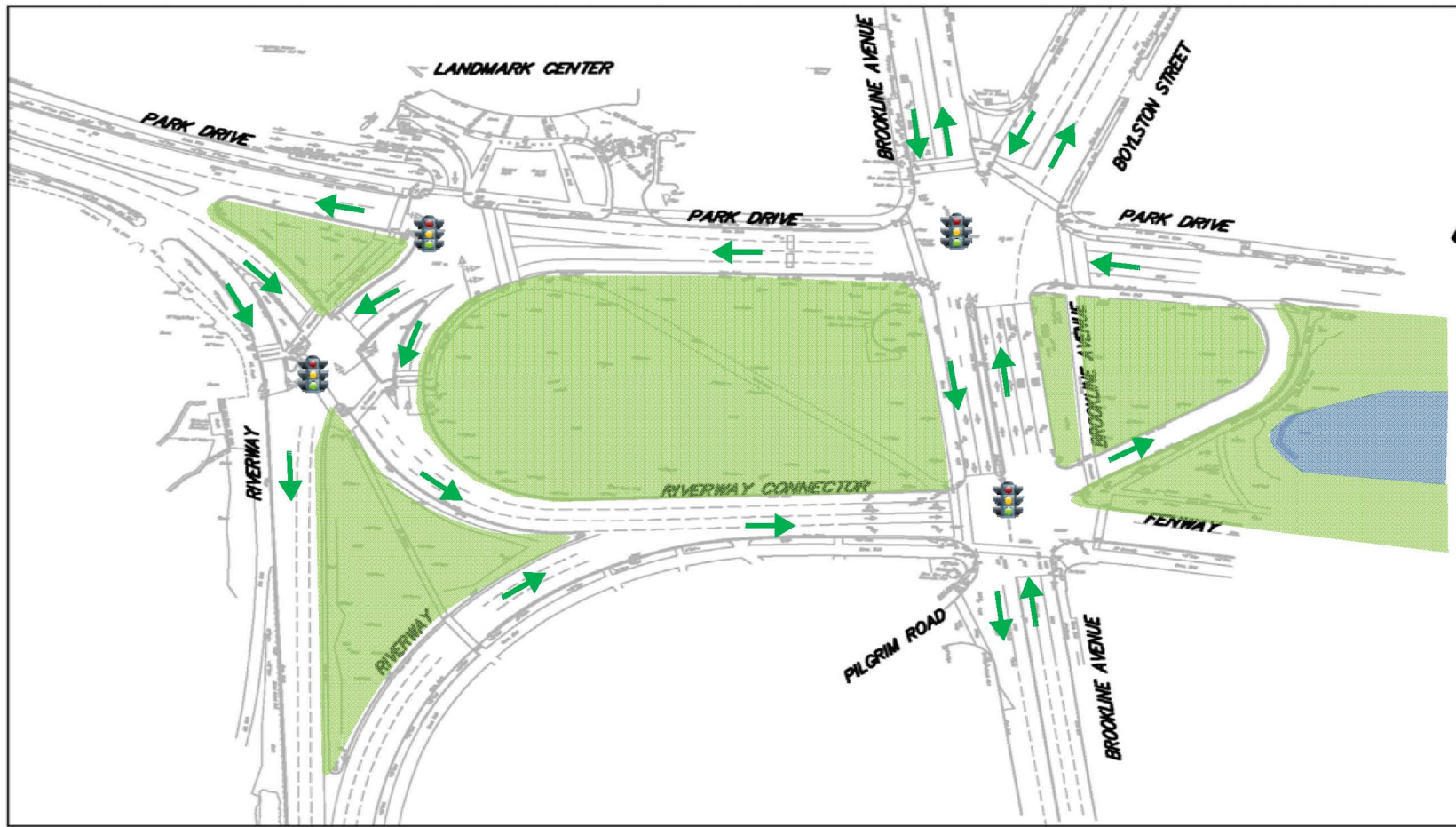
- Staged Construction
- Minimize Detours
- Minimize Traffic Delays
- Maintain Access Through Construction



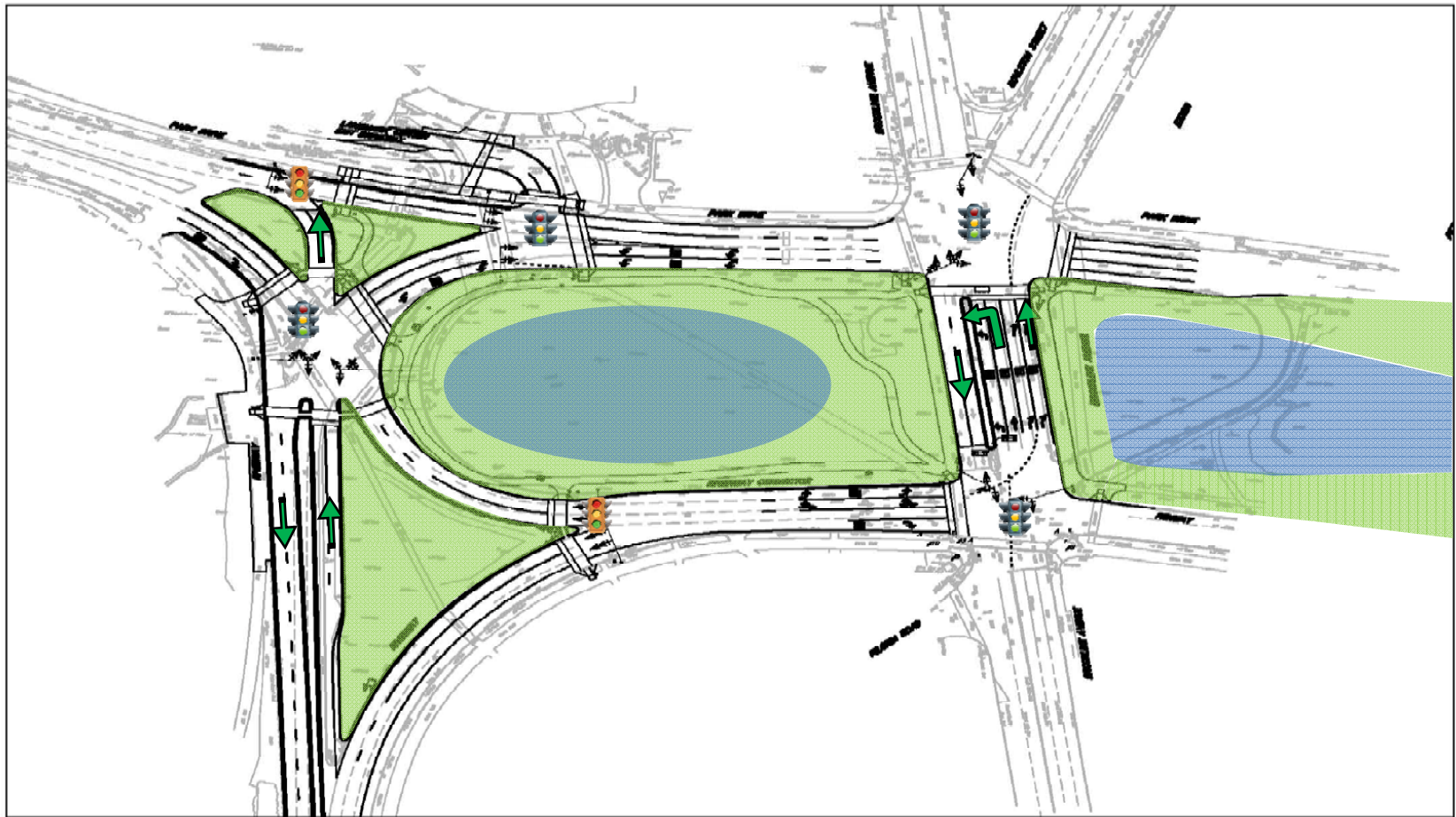
Agency and Area Abutter Coordination:

- ❖ Boston Transportation Department (BTD)
- ❖ Department of Conservation and Recreation (DCR)
- ❖ Boston Parks and Recreation Department
- ❖ City of Brookline
- ❖ Boston Landmarks Commission
- ❖ Massachusetts Historical Society
- ❖ Medical Academic and Scientific Community Organizations (MASCO)
- ❖ Samuels Group
- ❖ Landmark Center (Abbey Group now Samuels)

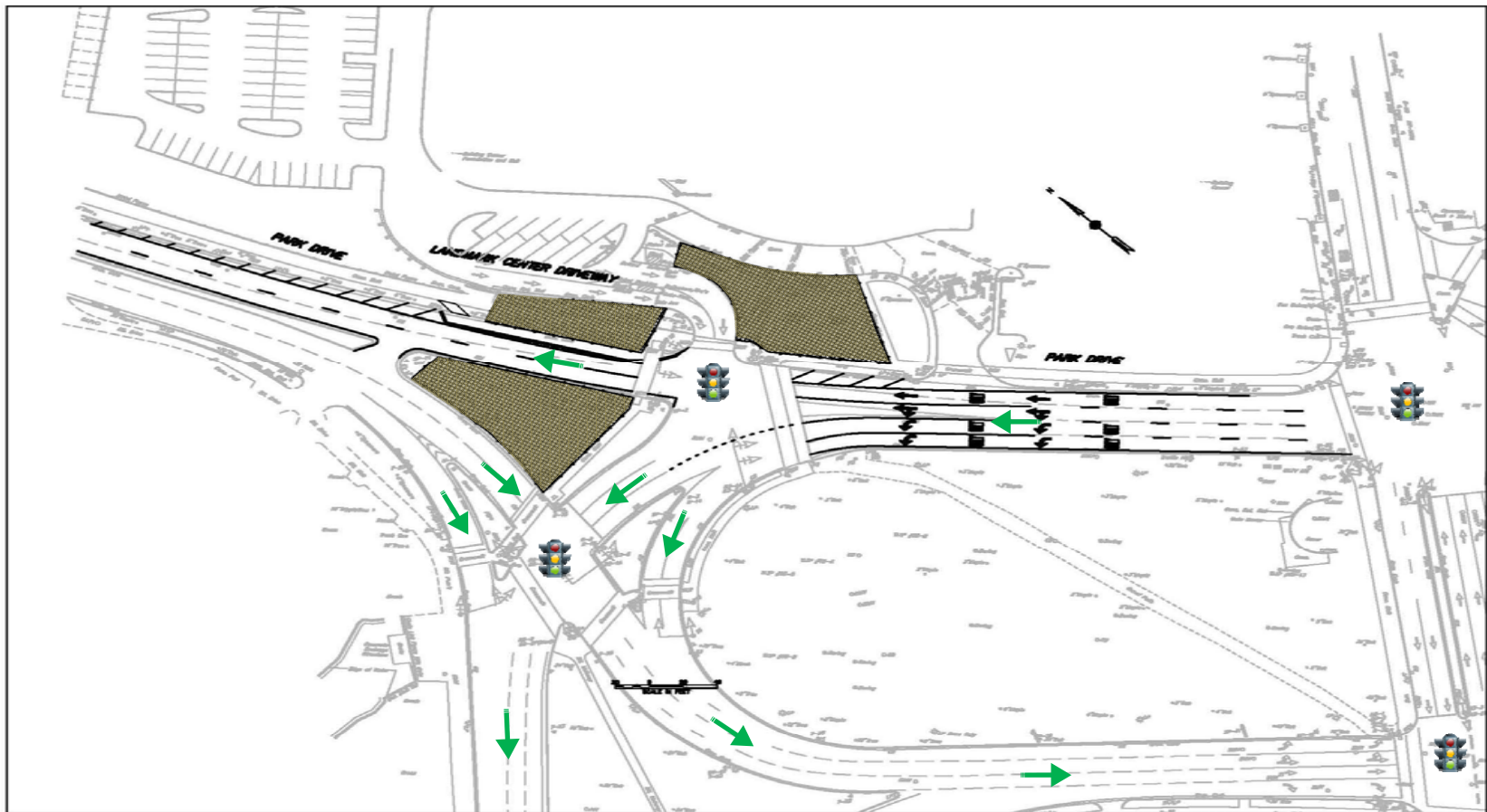
Existing Condition



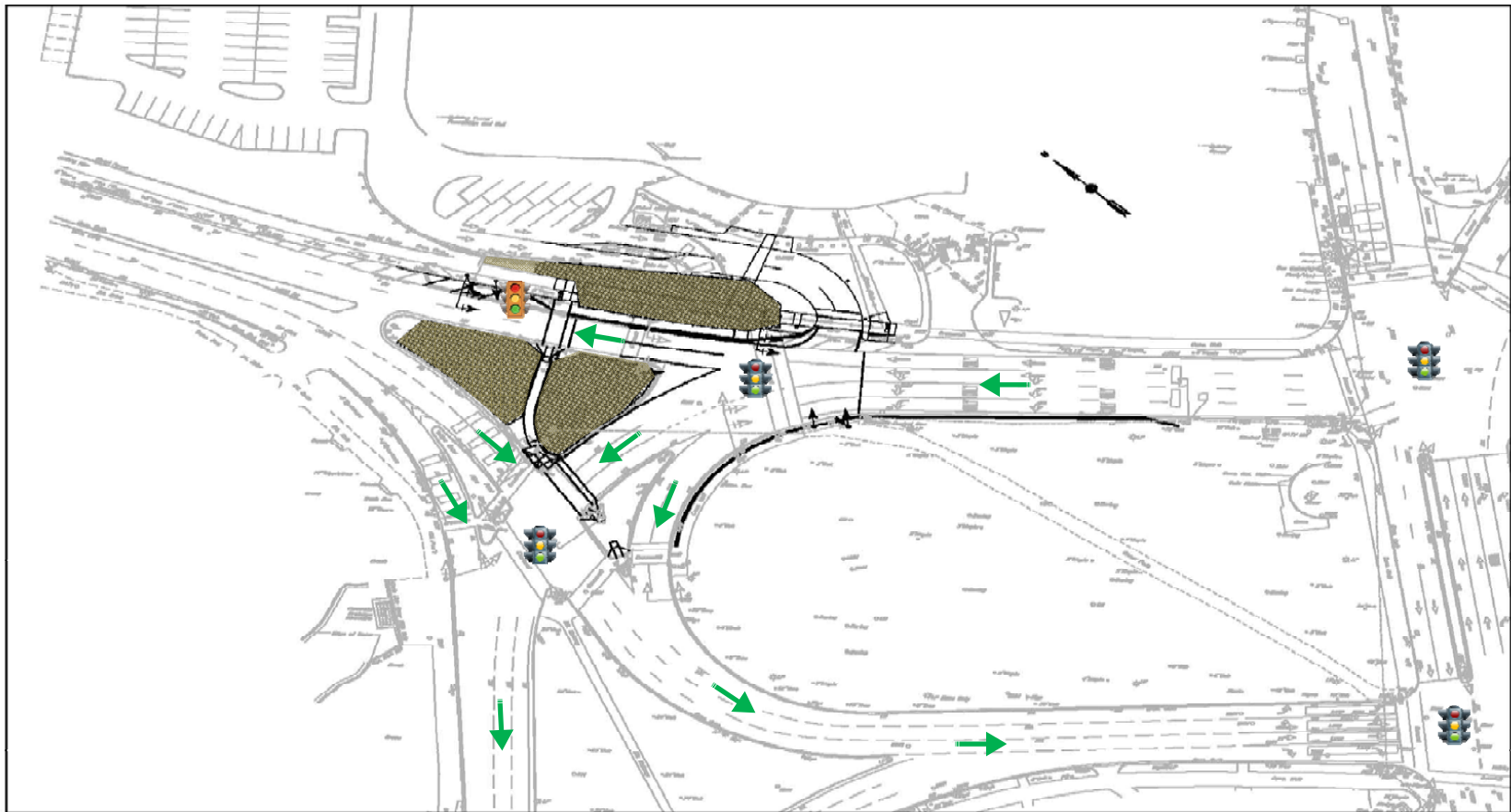
End Condition



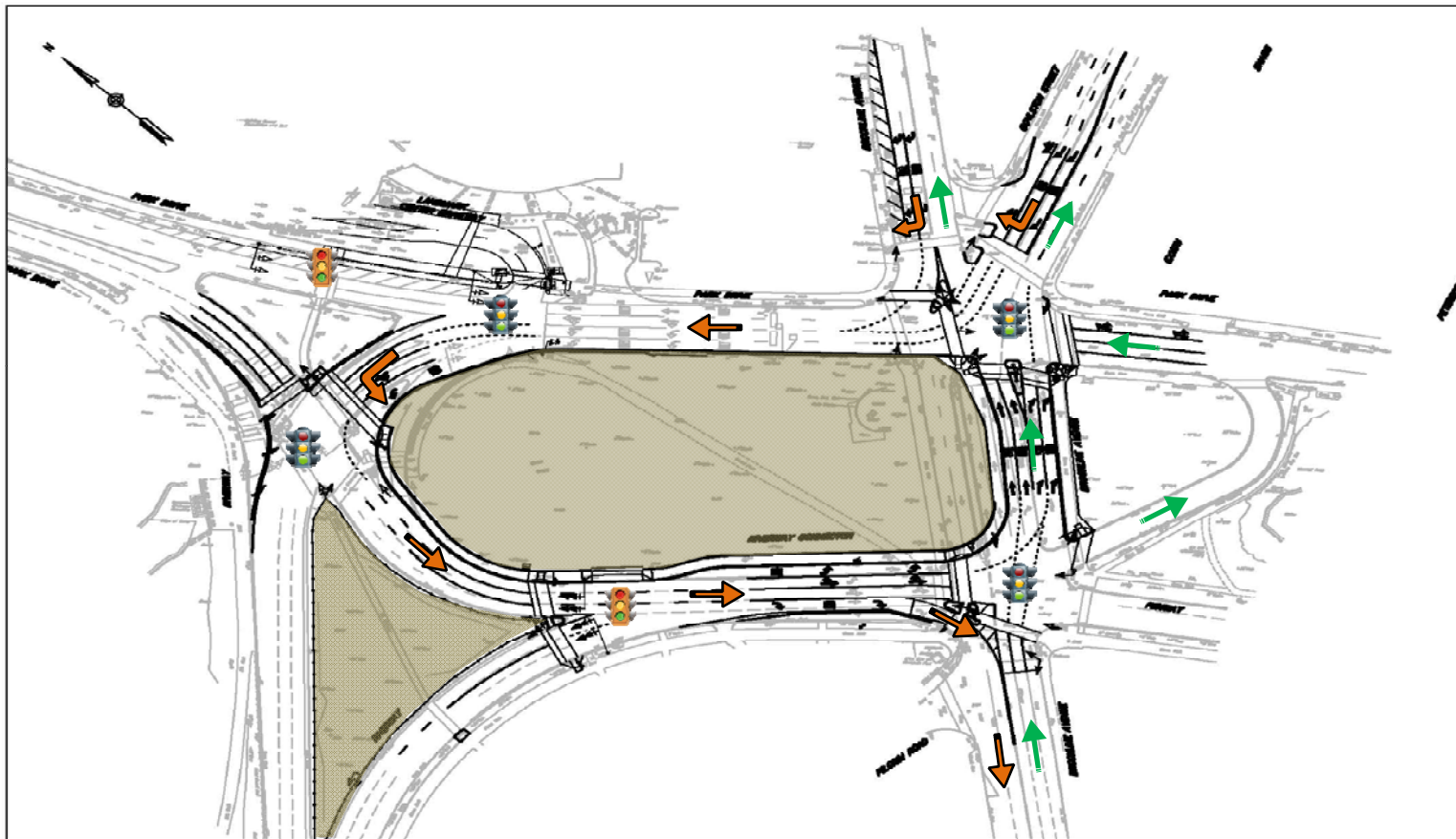
Landmark Center Drive Relocation Stage 1



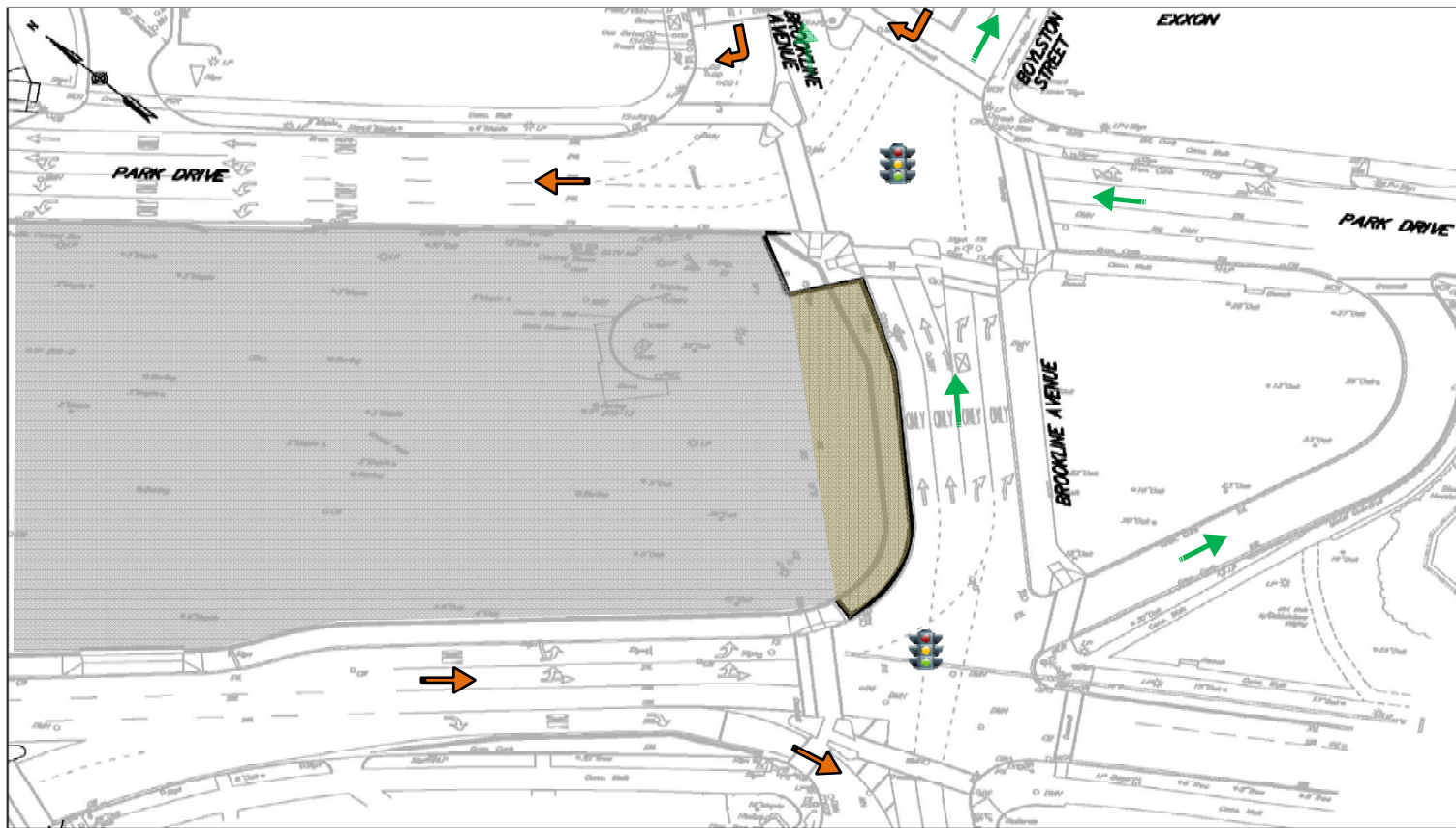
Landmark Center Drive Relocation Stage 2



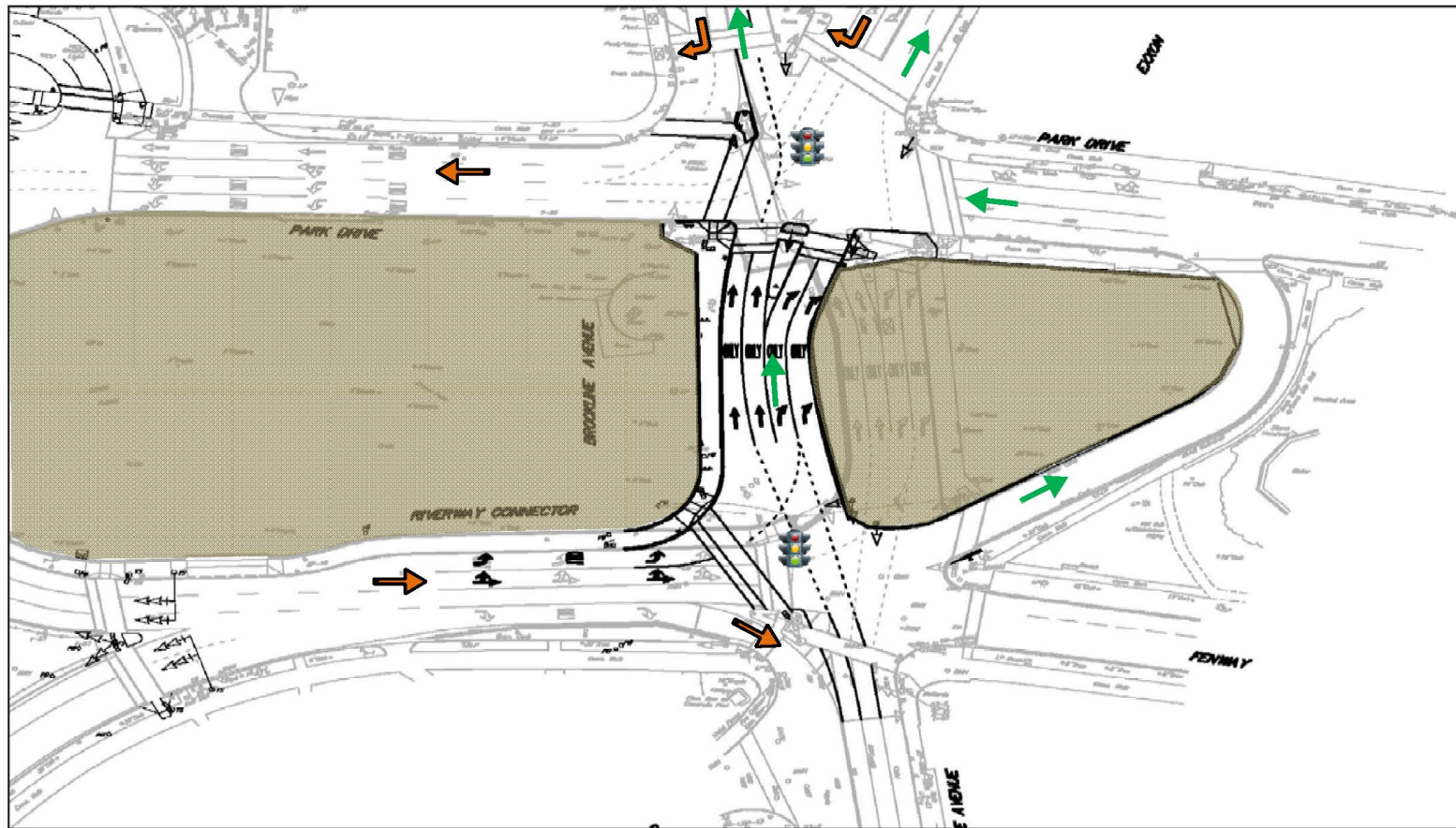
Stage 1A1



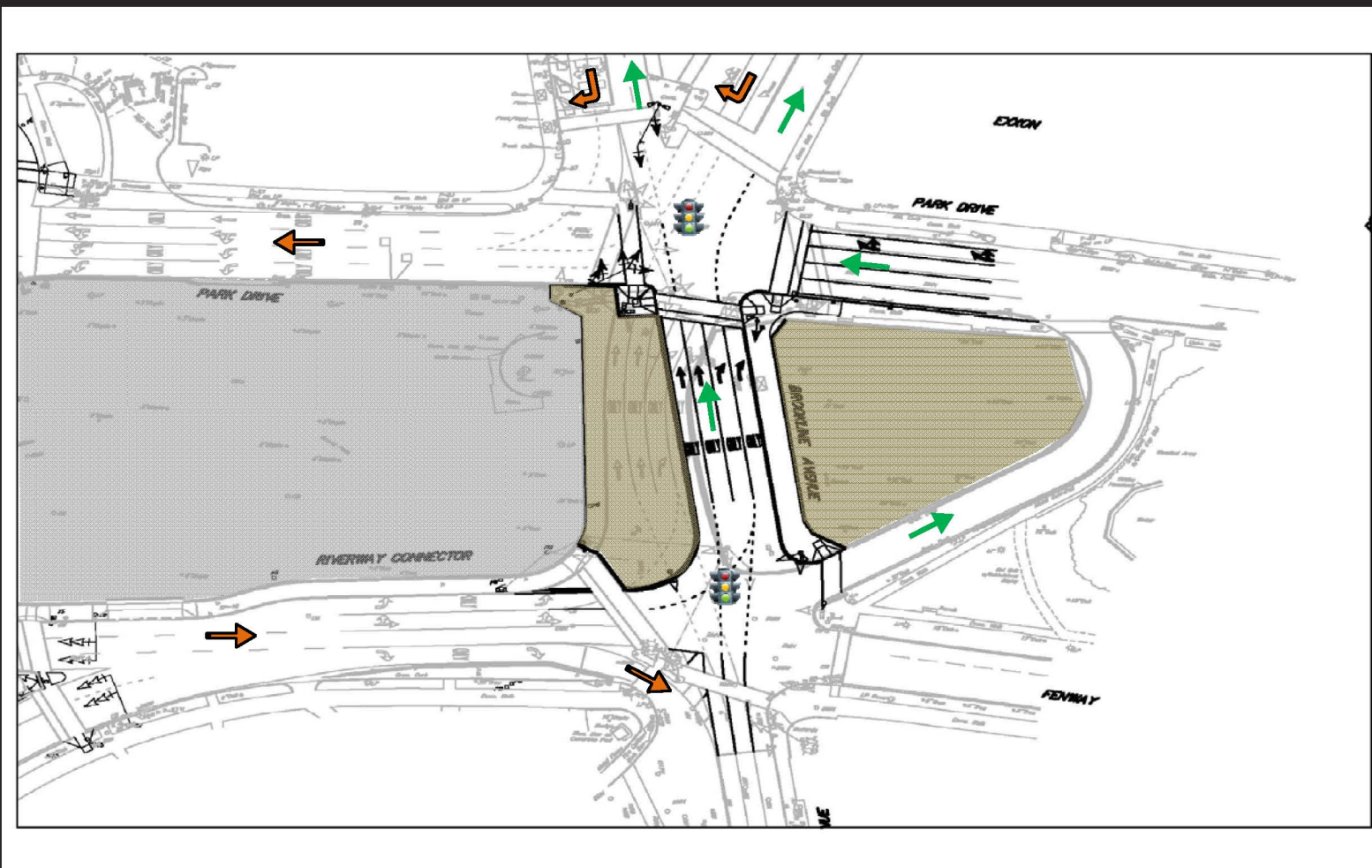
Stage 1A2



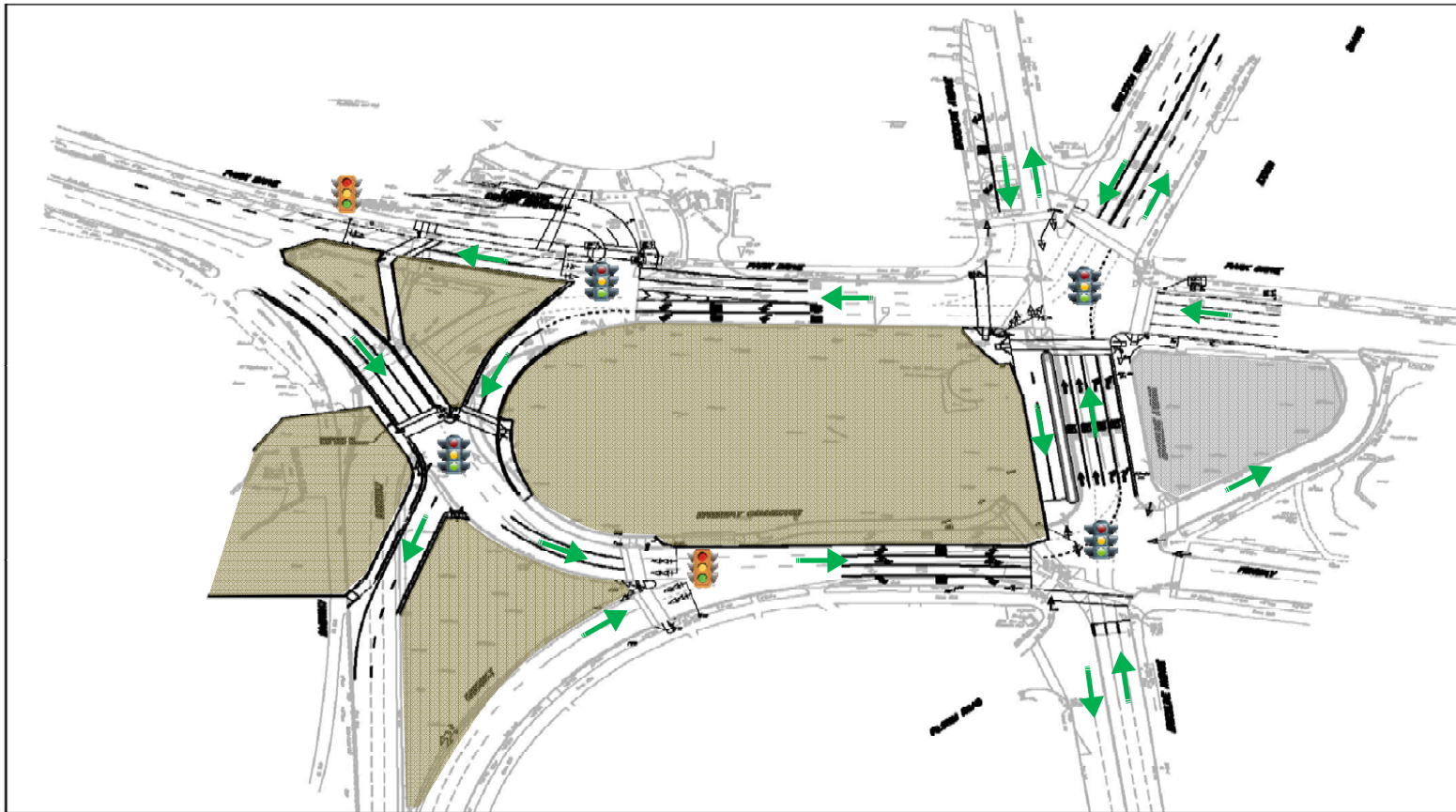
Stage 1B



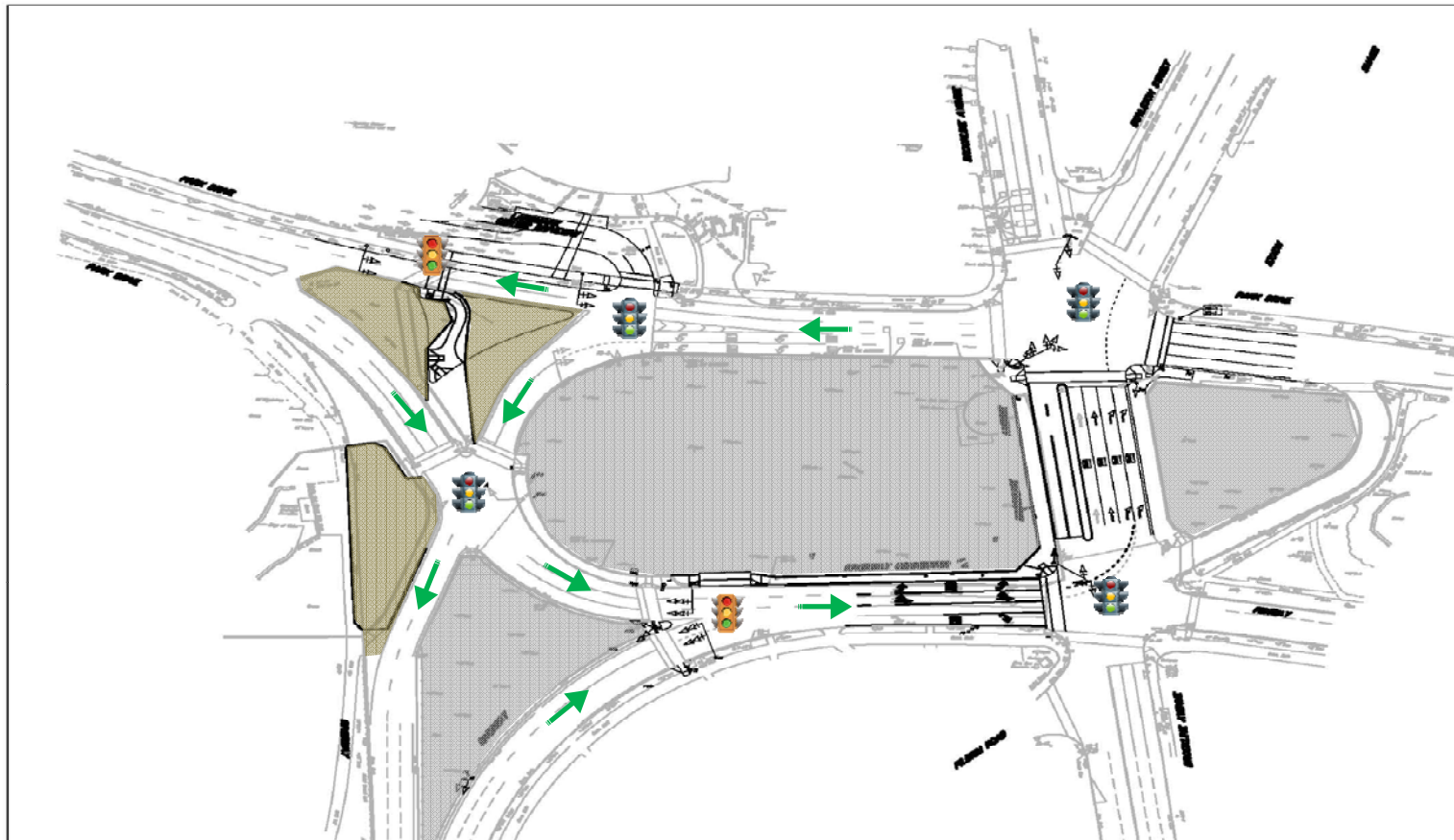
Stage 1C



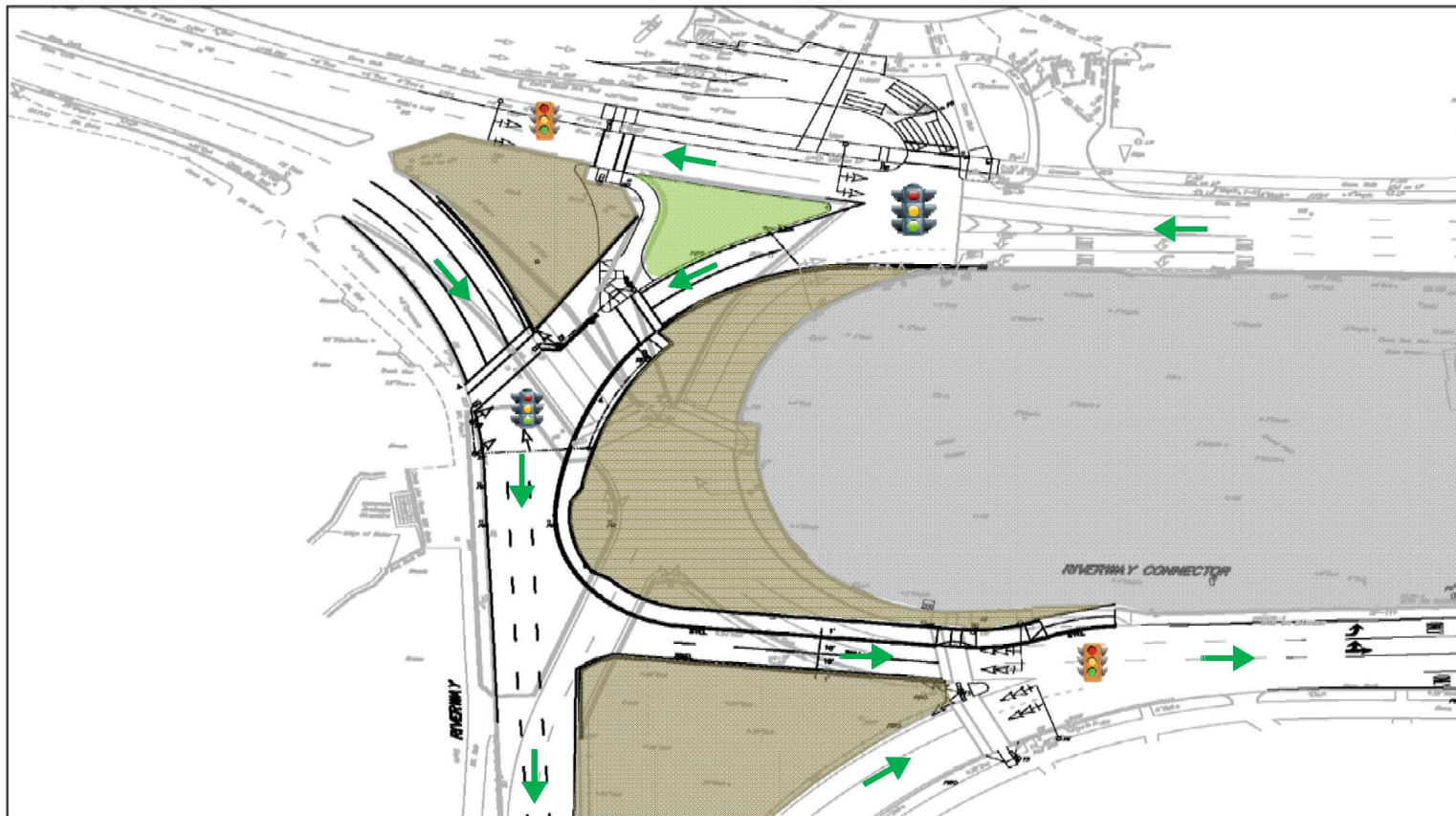
Stage 2A1



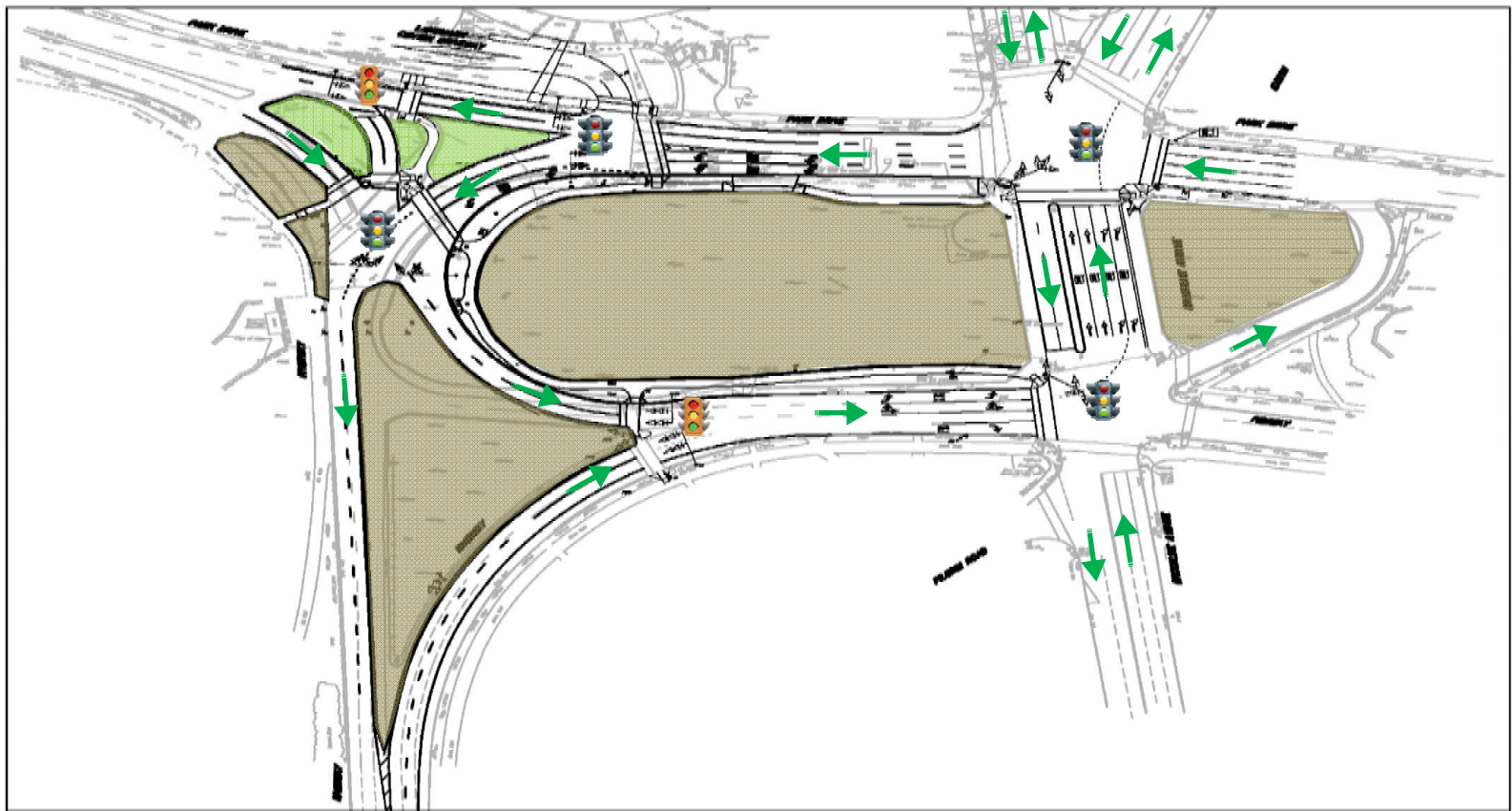
Stage 2A2



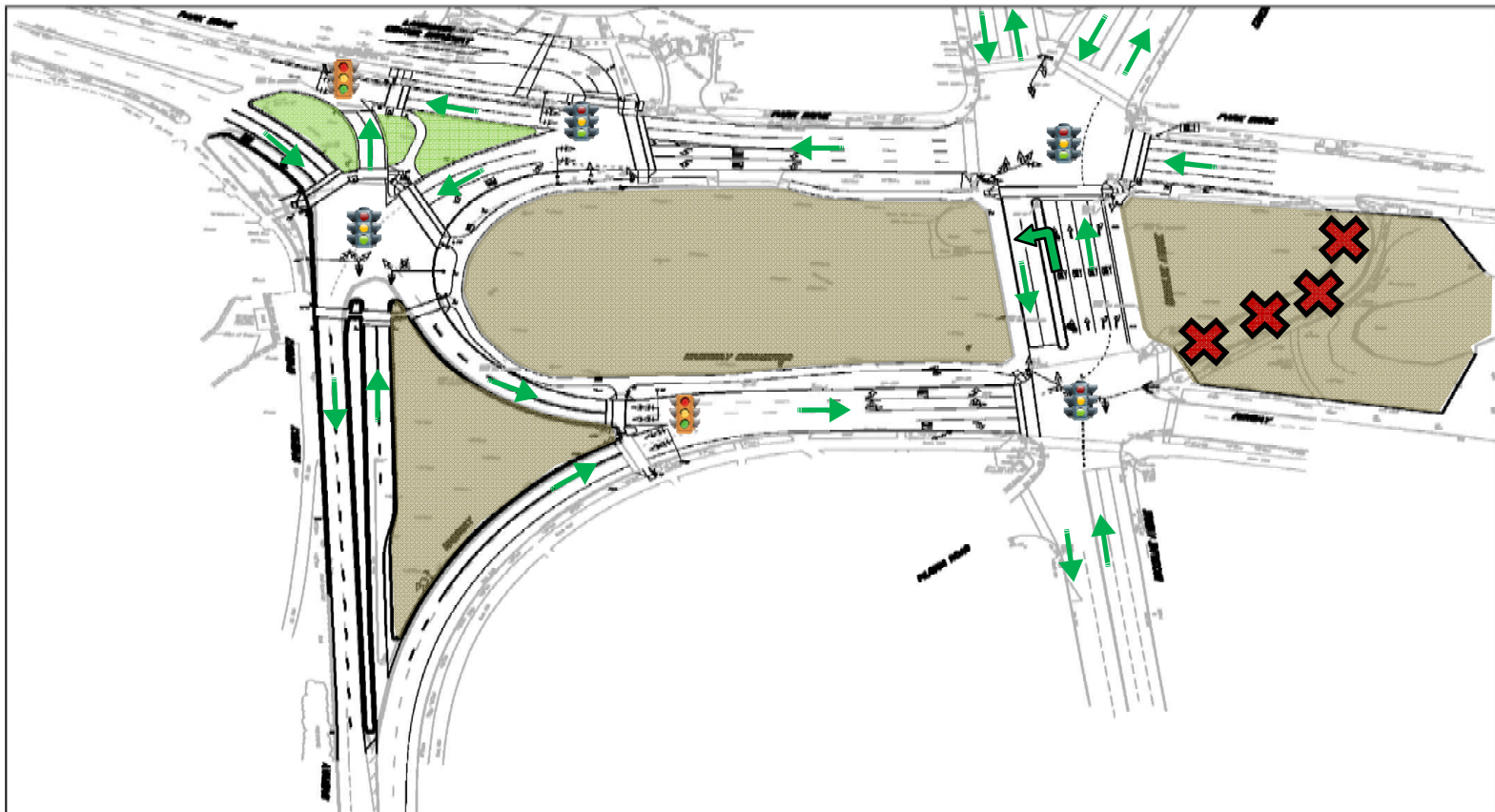
Stage 2B



Stage 2C



Stage 3





Project Schedule

Utility Relocation Start - May 2011

Utility Relocation Finish – November 2011

Project Advertisement - November 2011

Project Bid Phase – December 2011

Contract Award - February 2012

Notice to Proceed – March 2012

Anticipated Start Construction - April 2012

Anticipated End Construction - April/May 2015

Questions??

