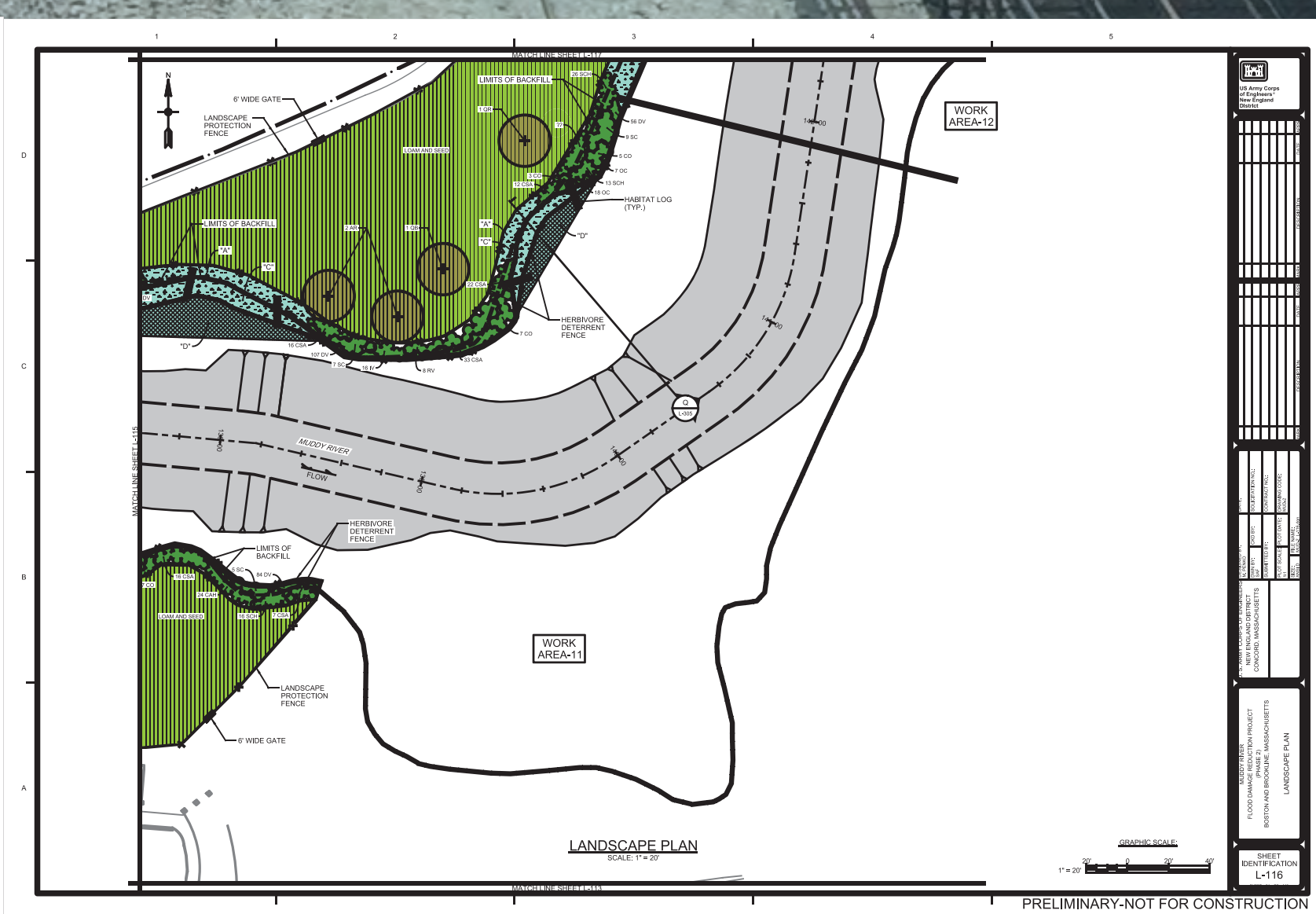
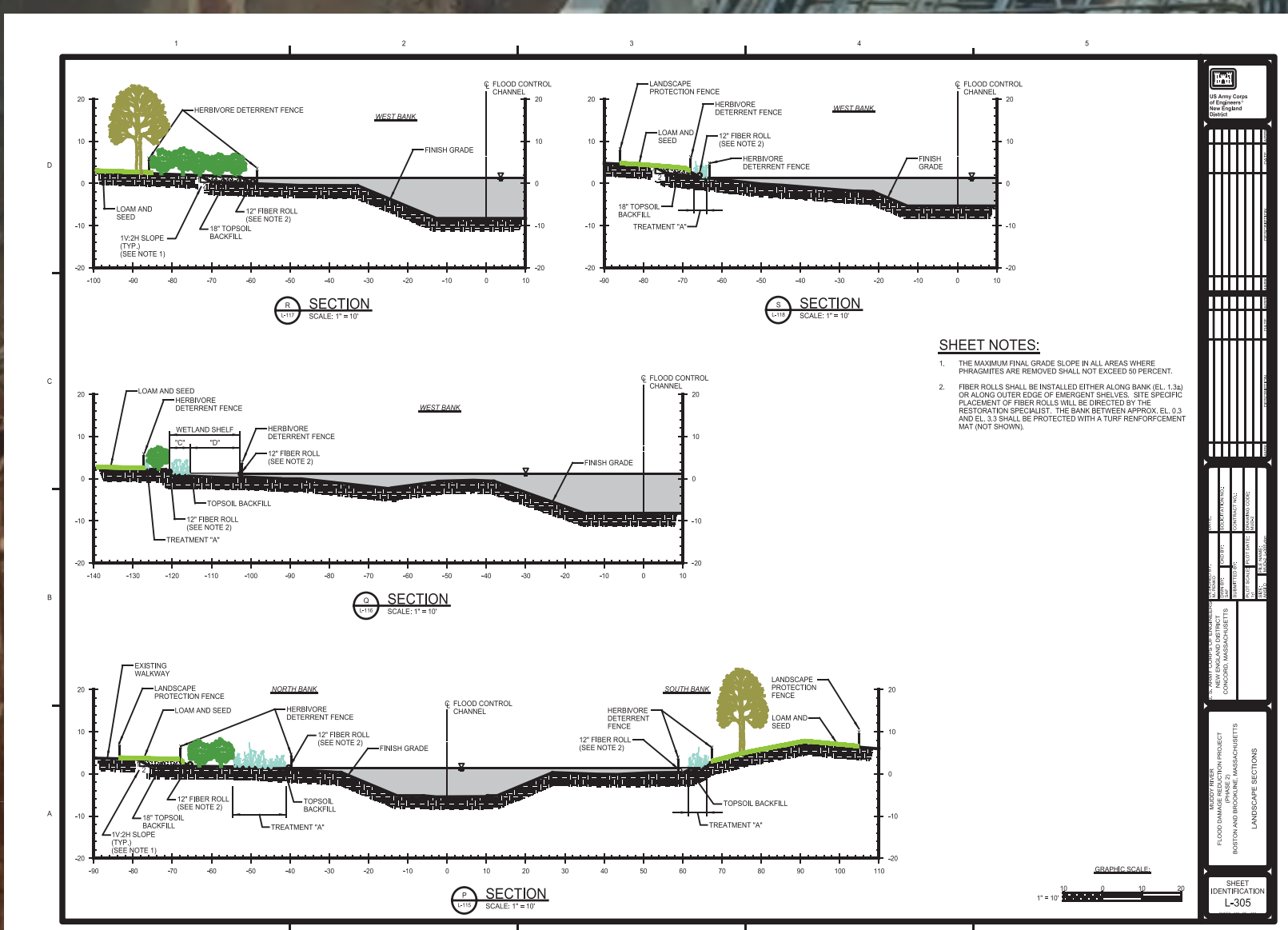
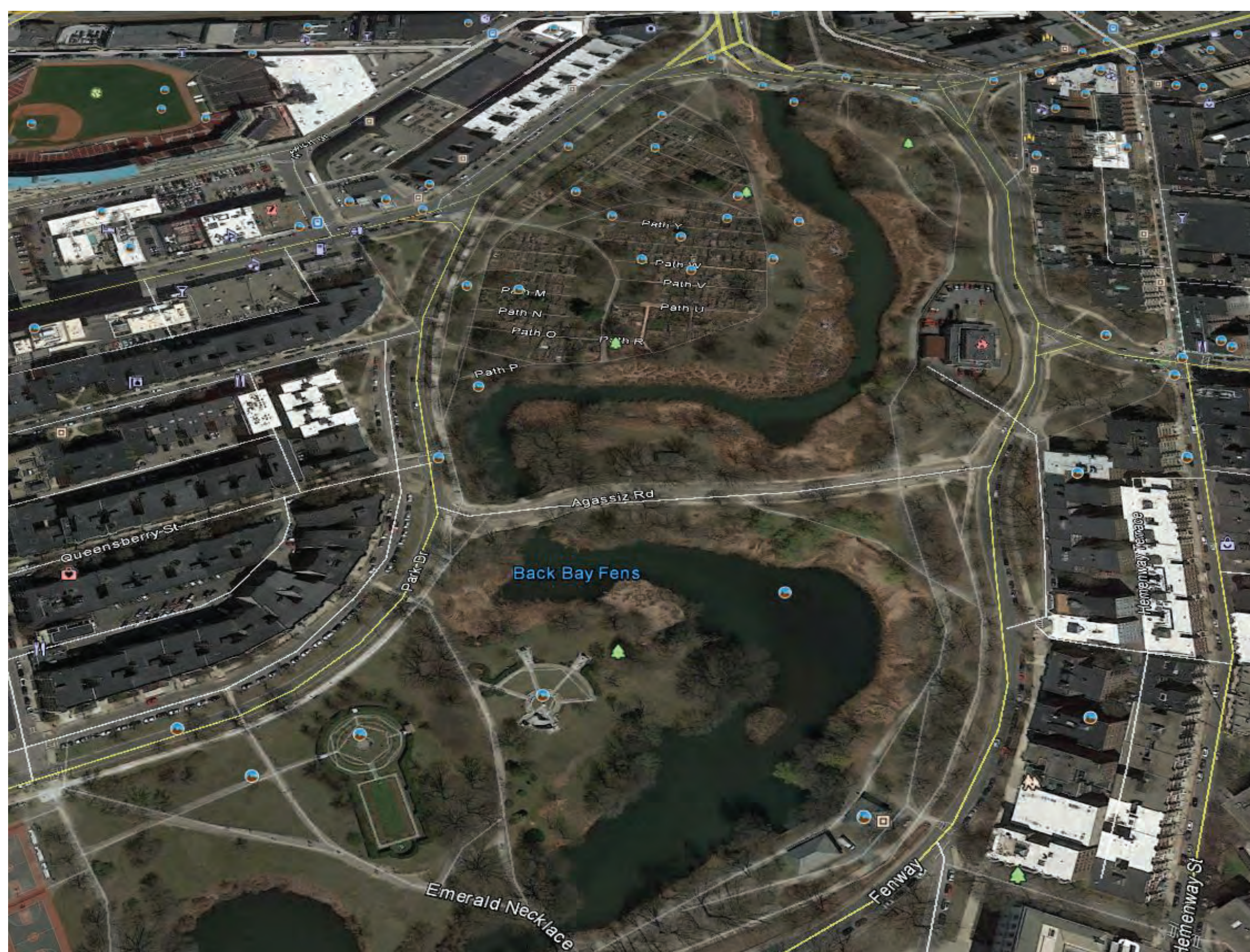


US Army Corps
of Engineers®
New England District

Work Areas #10 - #12

Downstream of the completed Phase 1 project, the Phase 2 work consists of essentially dredging a continuous channel from Avenue Louis Pasteur to Boylston Street. Work Areas #10 – #12 span the length of the Muddy River from the War Memorial to the Victory Gardens. The work consists of dredging a flood risk management channel that varies in width between 15' and 100', and varying in depth between Elevation. -5' to -8'. After the dredging, restoration includes constructing wetland shelves, creating wet meadows with a wetland seed mix and wetland plantings, and planting upland shrubs and various trees.



BUILDING STRONG®