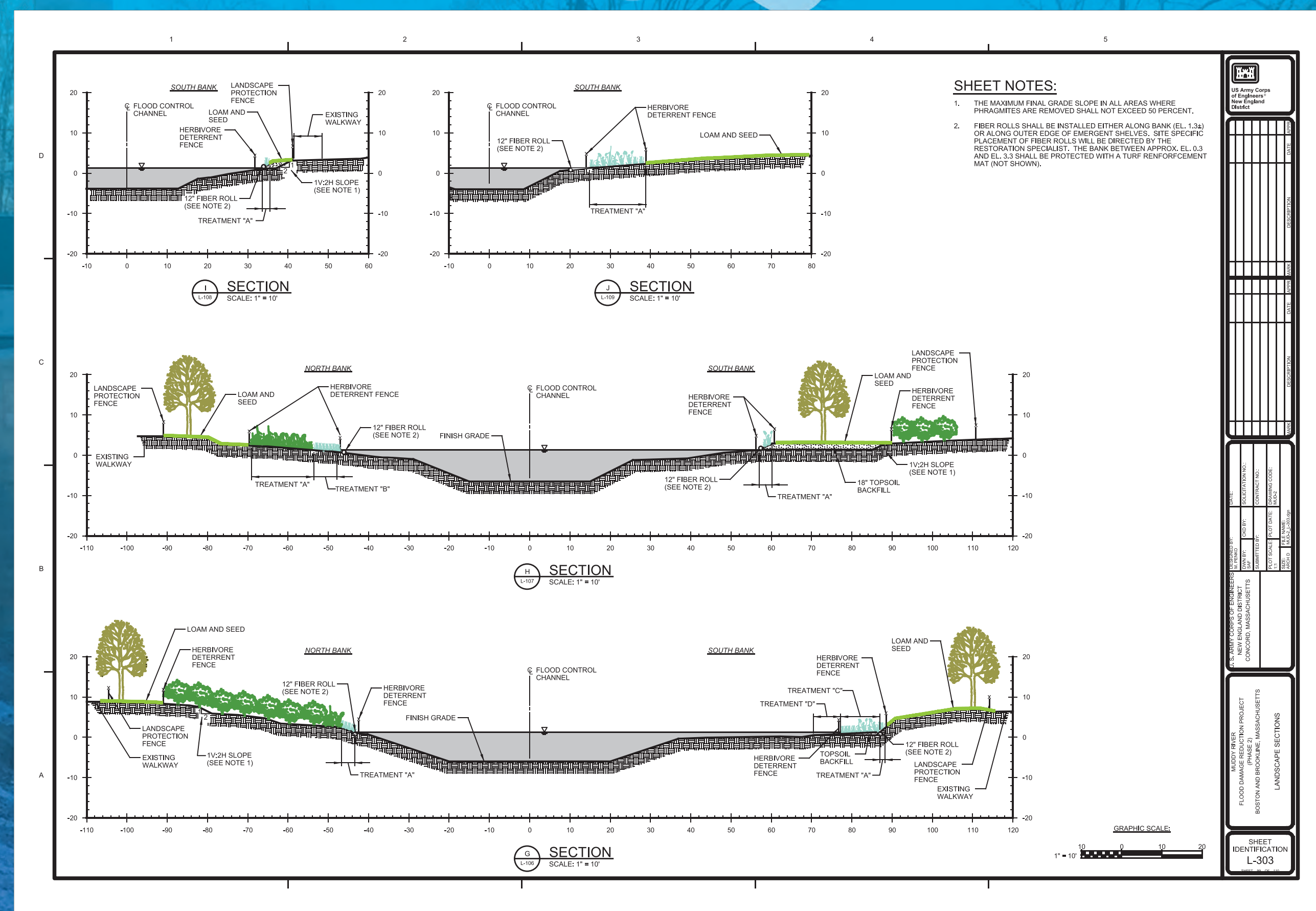
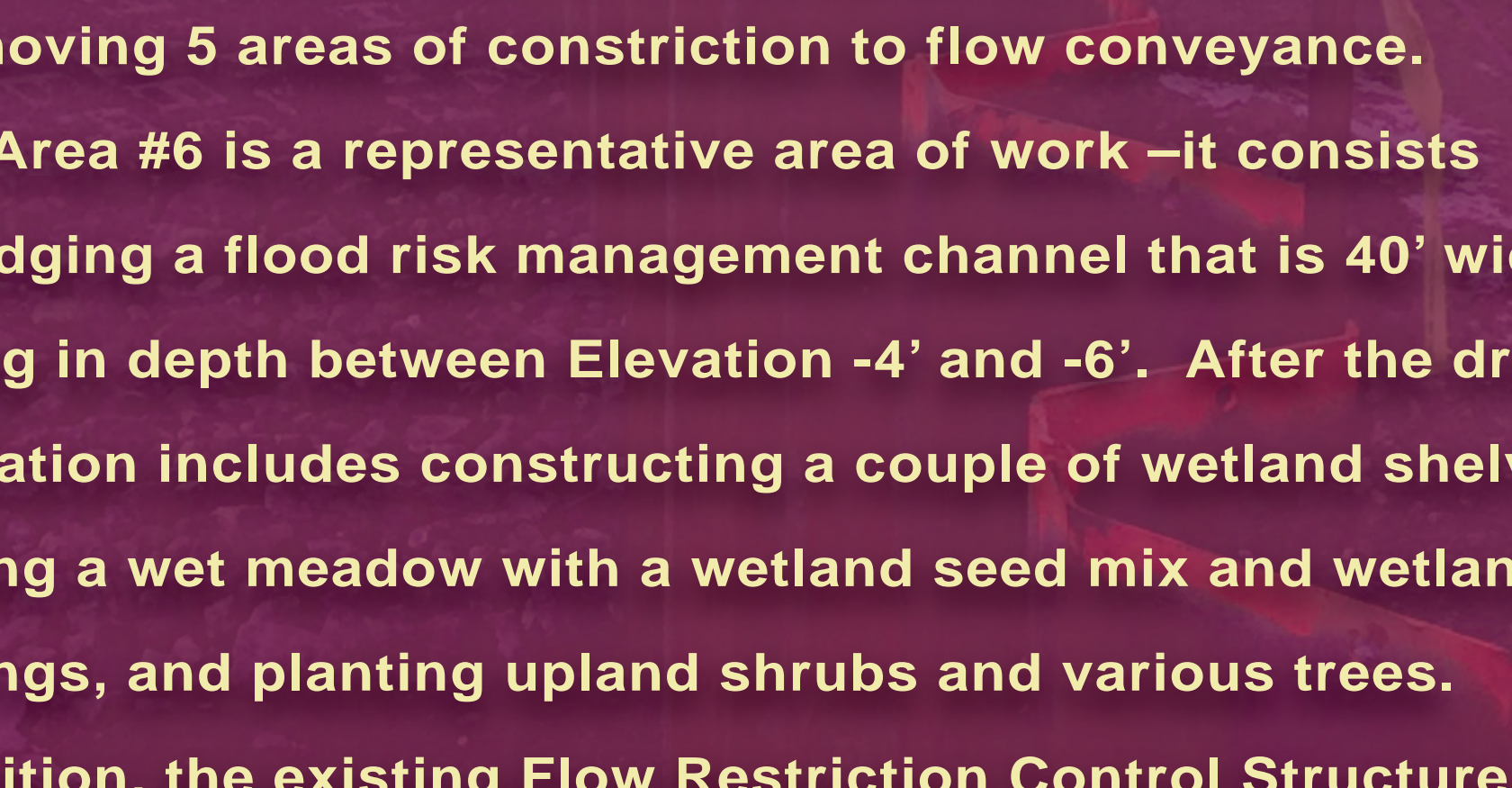




Muddy River



Work Area #6



In the Riverway portion of the Muddy River, the work consists of removing 5 areas of constriction to flow conveyance. Work Area #6 is a representative area of work –it consists of dredging a flood risk management channel that is 40' wide, varying in depth between Elevation -4' and -6'. After the dredging, restoration includes constructing a couple of wetland shelves, creating a wet meadow with a wetland seed mix and wetland plantings, and planting upland shrubs and various trees. In addition, the existing Flow Restriction Control Structure (FRCS) will be removed as part of this work.

BUILDING STRONG®