



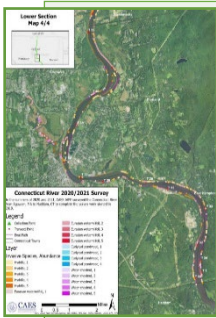
Lower Connecticut River Hydrilla Invasion - Actions and Organizations

May 2023

BUILDING STRONG®

WHAT'S BEING DONE?

WHO'S INVOLVED?



Monitoring and Invasion Mapping

- Aquatic plant surveys
- Tuber monitoring
- Map development
- [USGS Mapping Tool](#)
- [CAES Invasive Plants Map](#)



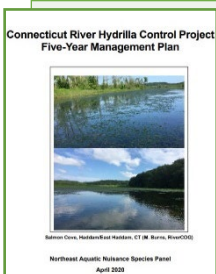
Research

- CT River hydrilla biotype genetics
- Management approach testing
- Cyanobacteria testing
- Herbicide sensitivity tests



Public Awareness

- Public stakeholder meetings
- Webinars and workshops
- Webpage development
- Documentary production
- [Educational material development](#)



Proactive and Preventative Measures

- Boat launch signage and monitoring
- Early detection
- [Draft Management Plan development](#)

Stakeholders

- Lower CT River Valley Council of Governments
- CT Resource Conservation and Development
- CT River Conservancy
- CT River Gateway Commission
- Eightmile River Wild & Scenic Coordinating Committee
- Capitol Region Council of Governments
- Friends of Whalebone Cove
- CT Marine Trades Association

Universities

- Connecticut Sea Grant at University of Connecticut
- University of Wisconsin – Whitewater
- North Carolina State University

Government Agencies

- Northeast Aquatic Nuisance Species Panel
- CT Agricultural Experiment Station
- CT Department of Energy and Environmental Protection
- U.S. Fish and Wildlife Services
- U.S. Geological Survey
- U.S. Army Corps of Engineers, New England

If you have further questions on this project please contact:

U.S. Army Corps of Engineers, New England District
By email at: CTRiver-Hydrilla@usace.army.mil

