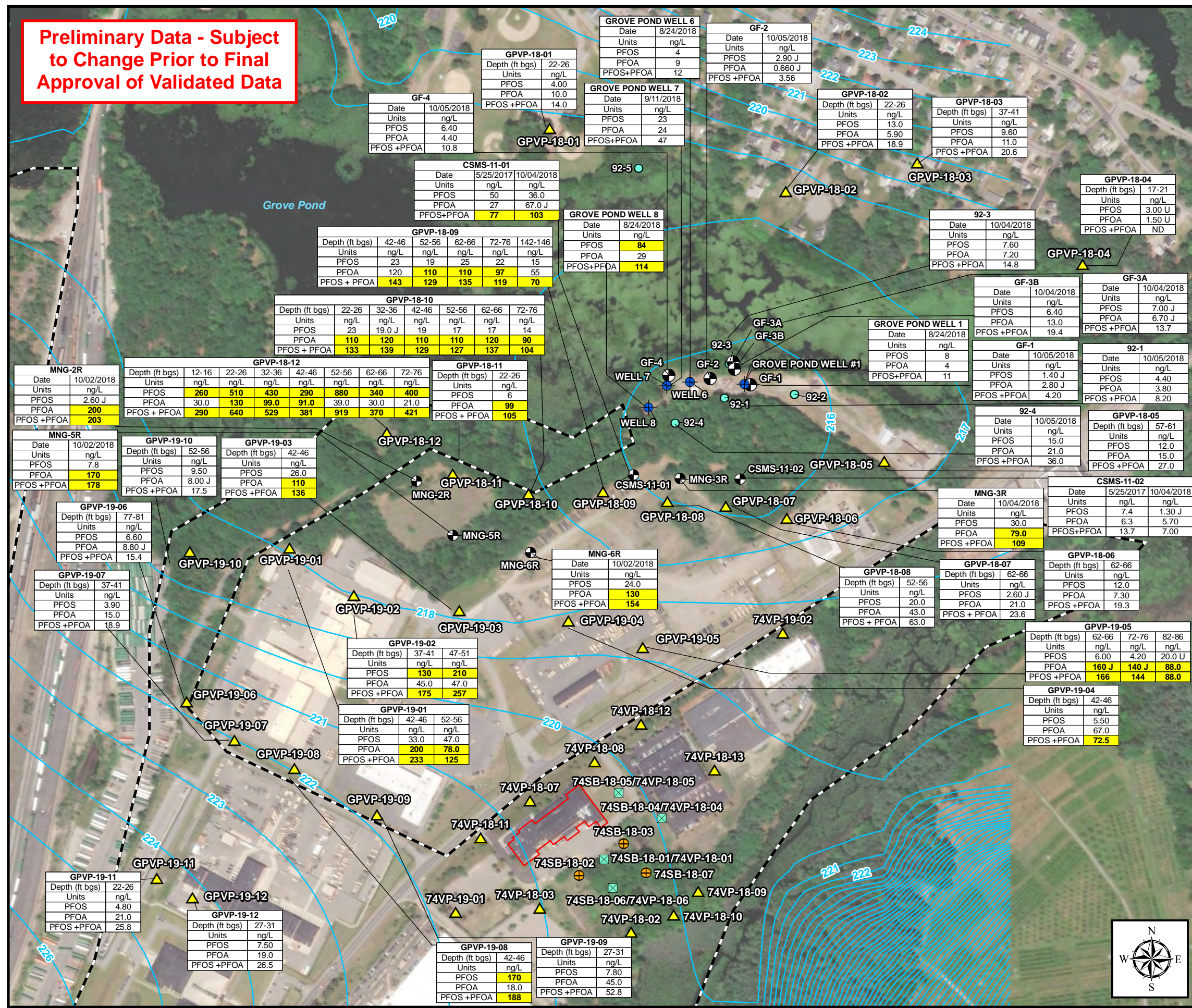


Preliminary Data - Subject to Change Prior to Final Approval of Validated Data



Legend

- Proposed Vertical Profiling Location
- Monitoring Well
- Public/Sentry Well
- Public Water Supply Well
- Model predicted water levels from the SHL300T2a_R88PEST model revision (NAVD88, feet)
- Former Fort Devens Boundary

Notes:

Bold/highlighted results exceed EPA LHA of 70 ng/L for separate or combined PFOS +PFOA

Data is reported to three significant figures

Perfluorooctane Sulfonic Acid (PFOS)
Perfluorooctanoic Acid (PFOA)

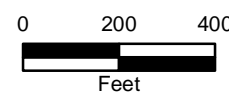
ng/L = nanograms per liter
J = estimated result
U = non-detect

Source: Esri, DigitalGlobe, GeoEye, Earthstar Geographics, CNES/Airbus DS, USDA, USGS, AeroGRID, IGN, and the GIS User Community

**Grove Pond Area Preliminary Results
Devens PFAS RI**

Former Fort Devens Army Installation
Devens, Massachusetts

KOMAN Government Solutions, LLC
293 Boston Post Road West, Suite 100, Marlborough, MA 01752



Date:
03/22/2019

Figure

