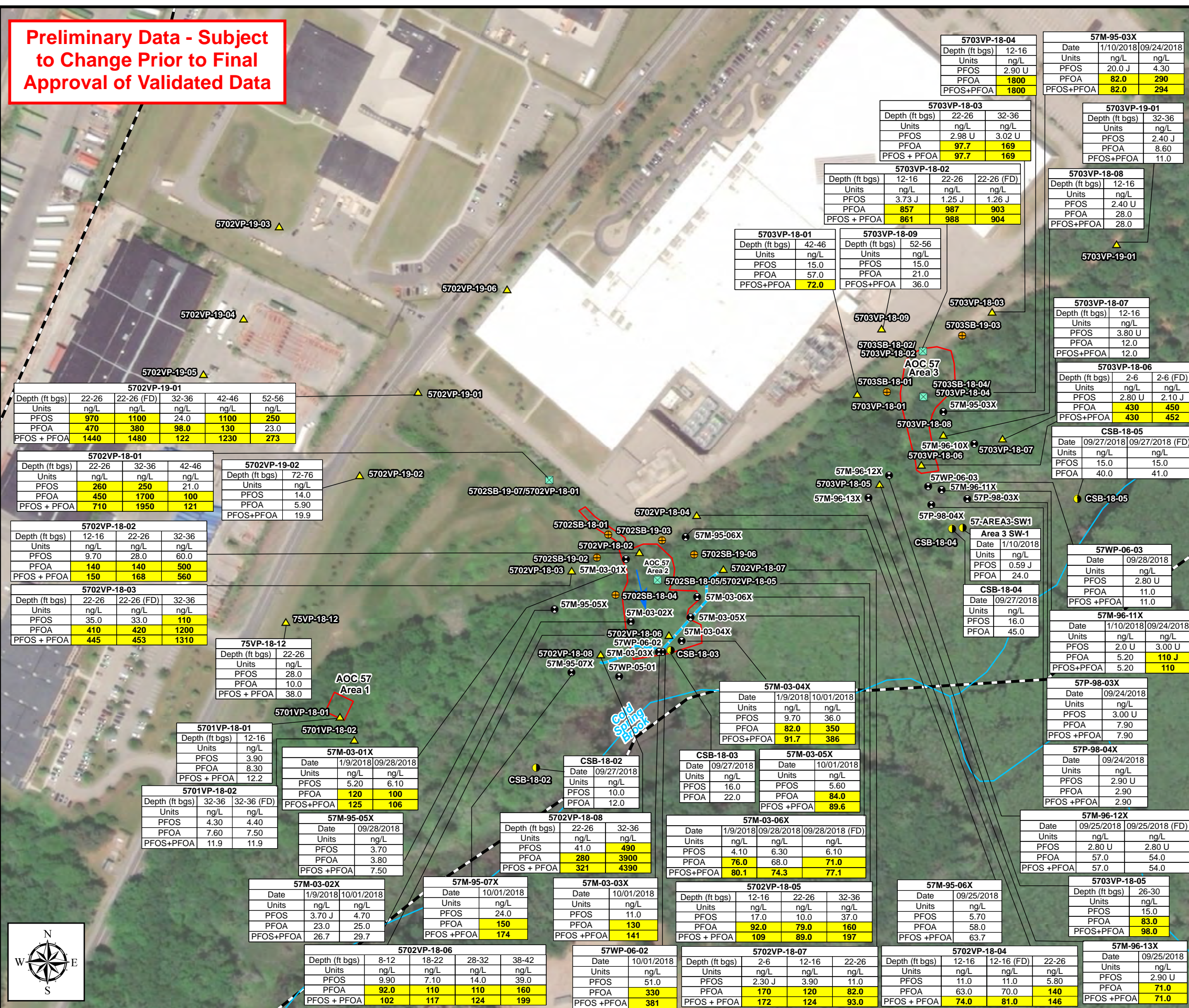


Preliminary Data - Subject to Change Prior to Final Approval of Validated Data

Legend

- Monitoring Well
- Surface Water and Sediment Sampling Location
- ⊗ Proposed Soil Boring and Vertical Profiling Location
- ▲ Vertical Profiling Location
- ⊕ Proposed Soil Boring Location
- ➔ Groundwater Flow Direction
- Flagged Wetland Limits
- Stream
- ⬜ Former Fort Devens Boundary

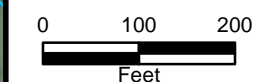


Notes:
 Site is within a MassDEP Approved Wellhead Protection Area (Zone II)
 For the vertical profile results, only the intervals with exceedances of the EPA LHA are shown or the interval with the maximum concentration.
 Bold/highlighted results exceed EPA LHA of 70 ng/L for separate or combined PFOS +PFOA Perfluorooctane Sulfonic Acid (PFOS) Perfluorooctanoic Acid (PFOA)
 Data reported to three significant figures.
 ng/L = nanograms per liter
 J = estimated result
 U = non-detect
 FD = Field Duplicate
 Aerial Sources: Esri, DigitalGlobe, GeoEye, i-cubed, USDA FSA, USGS, AEX, Getmapping, Aerogrid, IGN, IGP, swisstopo, and the GIS User Community

**AOC 57 Preliminary Results
 Devens PFAS RI**

Former Fort Devens Army Installation
 Devens, Massachusetts

KOMAN Government Solutions, LLC
 293 Boston Post Road West, Suite 100, Marlborough, MA 01752



Date: 04/02/2019

Figure .

