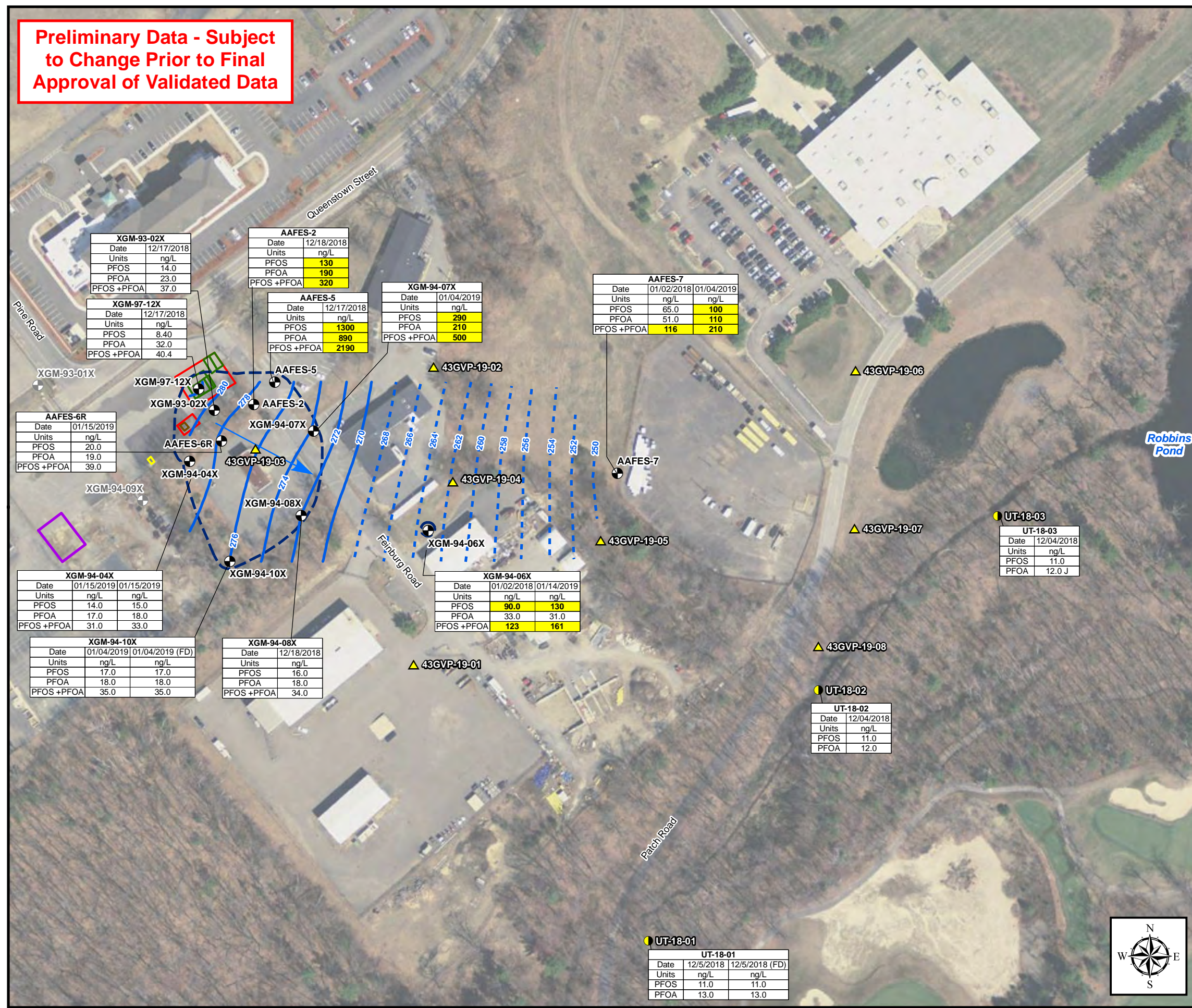


Preliminary Data - Subject to Change Prior to Final Approval of Validated Data



- Legend**
- Proposed Vertical Profiling Location
 - Proposed Surface Water and Sediment Sampling Location
 - Monitoring Well
 - Monitoring Well - Presumed Destroyed
 - Groundwater Flow Direction
 - Groundwater Elevation Contour (ft NGVD) (Contour Interval = 2 ft) October 2017
 - Inferred Groundwater Elevation Contour
 - Approximate Historical Extent of Groundwater Contamination in Exceedance of Cleanup Goals (based on 1999 to 2008 analytical data) (2008 Annual Report, HGL, 2009)
 - Area 1
 - Former Gasoline UST(s)
 - Former Waste Oil UST
 - Former Waste Oil AST
 - Former UST Area

Notes:

For the vertical profile results, only the intervals with exceedances of the EPA LHA are shown or the interval with the maximum concentration.

Bold/highlighted results exceed EPA LHA of 70 ng/L for separate or combined PFOS +PFOA Perfluorooctane Sulfonic Acid (PFOS) Perfluorooctanoic Acid (PFOA)

Data reported to three significant figures:

ng/L = nanograms per liter
 J = estimated result
 U = non-detect
 FD = Field Duplicate
 AST = Above ground storage tank
 UST = Underground storage Tank

Aerial Sources: 2013, USGS, MassGIS

AOC 43G Preliminary Data
 Devens PFAS RI WP

Former Fort Devens Army Installation
 Devens, Massachusetts

KOMAN Government Solutions, LLC
 293 Boston Post Road West, Suite 100, Marlborough, MA 01752

0 75 150 Feet	Date: 03/22/2019	Figure	
----------------------------	---------------------	--------	--

