



# AECOM

## Daily Report

|                    |                                      |                     |                   |
|--------------------|--------------------------------------|---------------------|-------------------|
| <b>Project:</b>    | Durham Meadows Pipeline Installation | <b>Date:</b>        | November 13, 2019 |
| <b>Location:</b>   | South Main Street, Middletown CT     | <b>Day of Week:</b> | Wednesday         |
| <b>Project #:</b>  | AECOM: 60445033                      | <b>Report No:</b>   | 28                |
| <b>Contractor:</b> | Ludlow Construction                  | <b>Page:</b>        | 2 of 7            |

### Payment Items:

**Res. Representative:**

F. Grimberg

**Date:** 11/13/19

## Daily Report

|                    |                                      |                     |                   |
|--------------------|--------------------------------------|---------------------|-------------------|
| <b>Project:</b>    | Durham Meadows Pipeline Installation | <b>Date:</b>        | November 13, 2019 |
| <b>Location:</b>   | South Main Street, Middletown CT     | <b>Day of Week:</b> | Wednesday         |
| <b>Project #:</b>  | AECOM: 60445033                      | <b>Report No:</b>   | 28                |
| <b>Contractor:</b> | Ludlow Construction                  | <b>Page:</b>        | 3 of 7            |



Figure 1 – Placing 2<sup>nd</sup> backfill lift over 1<sup>st</sup> pipe section



## Daily Report

|                    |                                      |                     |                   |
|--------------------|--------------------------------------|---------------------|-------------------|
| <b>Project:</b>    | Durham Meadows Pipeline Installation | <b>Date:</b>        | November 13, 2019 |
| <b>Location:</b>   | South Main Street, Middletown CT     | <b>Day of Week:</b> | Wednesday         |
| <b>Project #:</b>  | AECOM: 60445033                      | <b>Report No:</b>   | 28                |
| <b>Contractor:</b> | Ludlow Construction                  | <b>Page:</b>        | 4 of 7            |

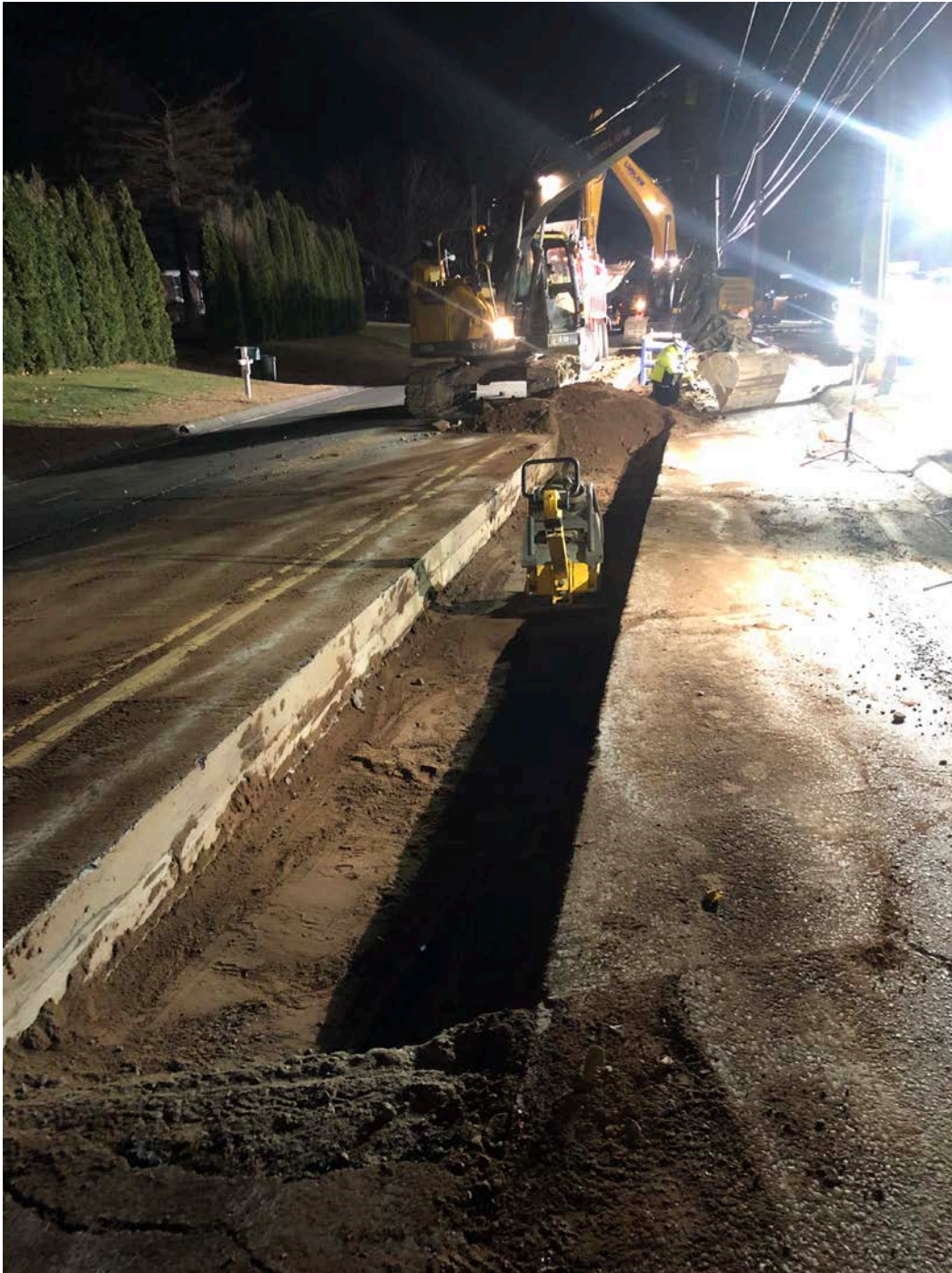


Figure 2 – Compacted backfill lift over 1<sup>st</sup>-2<sup>nd</sup> pipe sections



## Daily Report

|                    |                                      |                     |                   |
|--------------------|--------------------------------------|---------------------|-------------------|
| <b>Project:</b>    | Durham Meadows Pipeline Installation | <b>Date:</b>        | November 13, 2019 |
| <b>Location:</b>   | South Main Street, Middletown CT     | <b>Day of Week:</b> | Wednesday         |
| <b>Project #:</b>  | AECOM: 60445033                      | <b>Report No:</b>   | 28                |
| <b>Contractor:</b> | Ludlow Construction                  | <b>Page:</b>        | 5 of 7            |



Figure 3 – Backfill pile



## Daily Report

|                    |                                      |                     |                   |
|--------------------|--------------------------------------|---------------------|-------------------|
| <b>Project:</b>    | Durham Meadows Pipeline Installation | <b>Date:</b>        | November 13, 2019 |
| <b>Location:</b>   | South Main Street, Middletown CT     | <b>Day of Week:</b> | Wednesday         |
| <b>Project #:</b>  | AECOM: 60445033                      | <b>Report No:</b>   | 28                |
| <b>Contractor:</b> | Ludlow Construction                  | <b>Page:</b>        | 6 of 7            |



Figure 4 – Placing 5<sup>th</sup> pipe section

## Daily Report

|                    |                                      |                     |                   |
|--------------------|--------------------------------------|---------------------|-------------------|
| <b>Project:</b>    | Durham Meadows Pipeline Installation | <b>Date:</b>        | November 13, 2019 |
| <b>Location:</b>   | South Main Street, Middletown CT     | <b>Day of Week:</b> | Wednesday         |
| <b>Project #:</b>  | AECOM: 60445033                      | <b>Report No:</b>   | 28                |
| <b>Contractor:</b> | Ludlow Construction                  | <b>Page:</b>        | 7 of 7            |



**Figure 5 – Valve and tee section above ground, will be placed after lunch break**