

## Daily Report

<b>Project:</b>	Durham Meadows Pipeline Installation	<b>Date:</b>	October 24, 2019
<b>Location:</b>	Talcott Ridge Drive, Middletown CT	<b>Day of Week:</b>	Thursday
<b>Project #:</b>	AECOM: 60445033	<b>Report No:</b>	20
<b>Contractor:</b>	Ludlow Construction	<b>Page:</b>	1 of 16

### Weather Conditions

**Conditions:** Daylight hours. No clouds, sunny, light breeze.

**Temperature (°F):** High 63°F Low 38°F

Contractors & Subcontractors Workforce					Equipment in Use						
Trade	#	x	hrs	Trade	#	x	hrs	Type	#	x	hrs
USACE				Ludlow Construction				Concrete/Asphalt Road Saw	0	x	8
Field Engineer	1	x	8	Superintendent	1	x	8	Dump truck	5	x	8
				Safety Officer	1	x	8	Excavator - Large	1	x	8
				Foreman	1	x	8	Excavator - Mid-Size	1	x	8
				Dump truck Operator	2	x	8	Excavator - Rubber Wheeled	1	x	8
				Excavator Operator	2	x	8	Skid Steer / Bucket Loader	1	x	8
				Skid Steer/Bucket Loader Op.	1	x	8	Rolling Compactor	1	x	8
				Laborers	4	x	8	Plate Compactor	1	x	8
				<i>Total 9 persons + 1 sub. Trucker</i>				Jumping Jack Compactor	1	x	8
				<i>Note that some persons operate</i>				Street Sweeper (Broce Broom)	1	x	8
				<i>Multiple pieces equipment.</i>				Material Hopper	1	x	8
				Sub-contractor				Pipe saw	1	x	8
				Dump truck Operator	1	x	8	Light Tower	0	x	8
				Middletown Police Dept.							
				Police Officer Detail	1	x	8				

<b>Visitors:</b>	Ed Hathaway	EPA	Steve Dunbar	USACE
	Bobby Russo	Public Works		

**Notes:**

**Begin at Sta. 40+71.71 and End at Sta. 40+36.88 (As of departure-at 1130 hour: to be revised)** Distance counts down as one proceeds up – east on - Talcott Ridge Dr.; distance is by length of pipe, not “road distance” uphill along Talcott.

**Pipe Connections:** Restrained, both with locks and mega-lugs. See figures for tie-offs too bends or T's.

**Drain Pipe Break:** Repaired 18" drain pipe break. Bobby Russo (Middletown DPW) on-site to inspect for satisfactory fix.

0730 – On site: Talcott Ridge Dr. Excavation on going with large (CAT 336E) excavator. Begin day at Sta. 40+71.71, which is the center of a 22.5<sup>0</sup> bend. With the end of day broken drain pipe issue yesterday, only the tie-offs were noted. The elevations of this bend was recorded as 361.24 feet and the elevation of the blacktop 368.44 feet. Note that this was the second bend installed yesterday.

0800 – Re-excavated the broken drain pipe from the previous day. Making a larger clearing about the pipe and cleaning it off to allow for it to be fixed.

0840 – A segment of ADS pipe was cemented into place over the break in the 18" drain pipe that occurred at the end of yesterday. Bricks were used to provide extra support at the ends and on the side. The entire repaired area was then covered with geotextile fabric and 1-foot of gravel laid down over the drain line. The foot of gravel was also the bed for the 16" DI pipe that was installed next.

0845 – Starting at the 22.5<sup>0</sup> Bend located at Station Sta. 40+71.71, 19.58 feet of 16” DI was installed. The odd length was the result of removing the restraining bead from the end of the pipe to allow for a mega-lug restraint to be used to attach to the bend at the starting point.

**Res. Representative:**

W. Abrahams-Dematte

**Date:** 10/24/19

## Daily Report

<b>Project:</b>	Durham Meadows Pipeline Installation	<b>Date:</b>	October 24, 2019
<b>Location:</b>	Talcott Ridge Drive, Middletown CT	<b>Day of Week:</b>	Thursday
<b>Project #:</b>	AECOM: 60445033	<b>Report No:</b>	20
<b>Contractor:</b>	Ludlow Construction	<b>Page:</b>	2 of 16

0950 – Installed 7.25 feet of 16” DI plus a 16x6 Hydrant Tee with gate valve. Install to station (center of Tee) 40+44.38 and covered with 1-foot lift of stone dust. Tie offs to the Hydrant Tee and Gate Valve are to the nearest corner of the steel double catch basins, located on the north and south side of Talcott where the road bends to the south. The north tie-off is 38.8 feet to the Tee and 39.5 feet to the valve. The south tie-off is 31.6 feet to the Tee and 31.3 feet to the Valve. The top of Tee is approximately 7.5 feet below grade. Elevations still pending.

1015 – Install 7 feet of 16” DI plus 0.5 feet from center of Hydrant Tee to Station 40+36.88. At this point the large excavator is swapped out for a Rubber Wheeled Excavator. The rubber wheeled excavator is being employed so as to not destroy the driveway apron at 124 Talcott Ridge Dr. According to Billy (Ludlow), the plan is to shorten the line in that direction and install the 45<sup>0</sup> bend a little earlier in order to stay away from undermining the driveway apron.

1100 – An enlarged excavation for the three-valve 12” water main connection has been excavated. This comes after crossing under the existing fire hydrant line and before crossing under the existing 12” water main. The new assembly lies adjacent to the existing ROW and 12” line and valve assembly. The existing assembly is located to the north side of the new assembly. The crew breaks for lunch before installing the new assembly which consists of 2x16” Butterfly Valves on either end of a 16”x12” T and 12” Gate Valve (center of Tee to 12” Gate Valve is 25”). Hook-up to the existing 12-inch line will occur at a later date. The assembly should add 6.34 feet to the line.

1130 – Off site.

### Payment Items:

**Res. Representative:**

W. Abrahams-Dematte

**Date:** 10/24/19

## Daily Report

<b>Project:</b>	Durham Meadows Pipeline Installation
<b>Location:</b>	Talcott Ridge Drive, Middletown CT
<b>Project #:</b>	AECOM: 60445033
<b>Contractor:</b>	Ludlow Construction

<b>Date:</b>	October 24, 2019
<b>Day of Week:</b>	Thursday
<b>Report No:</b>	20
<b>Page:</b>	3 of 16

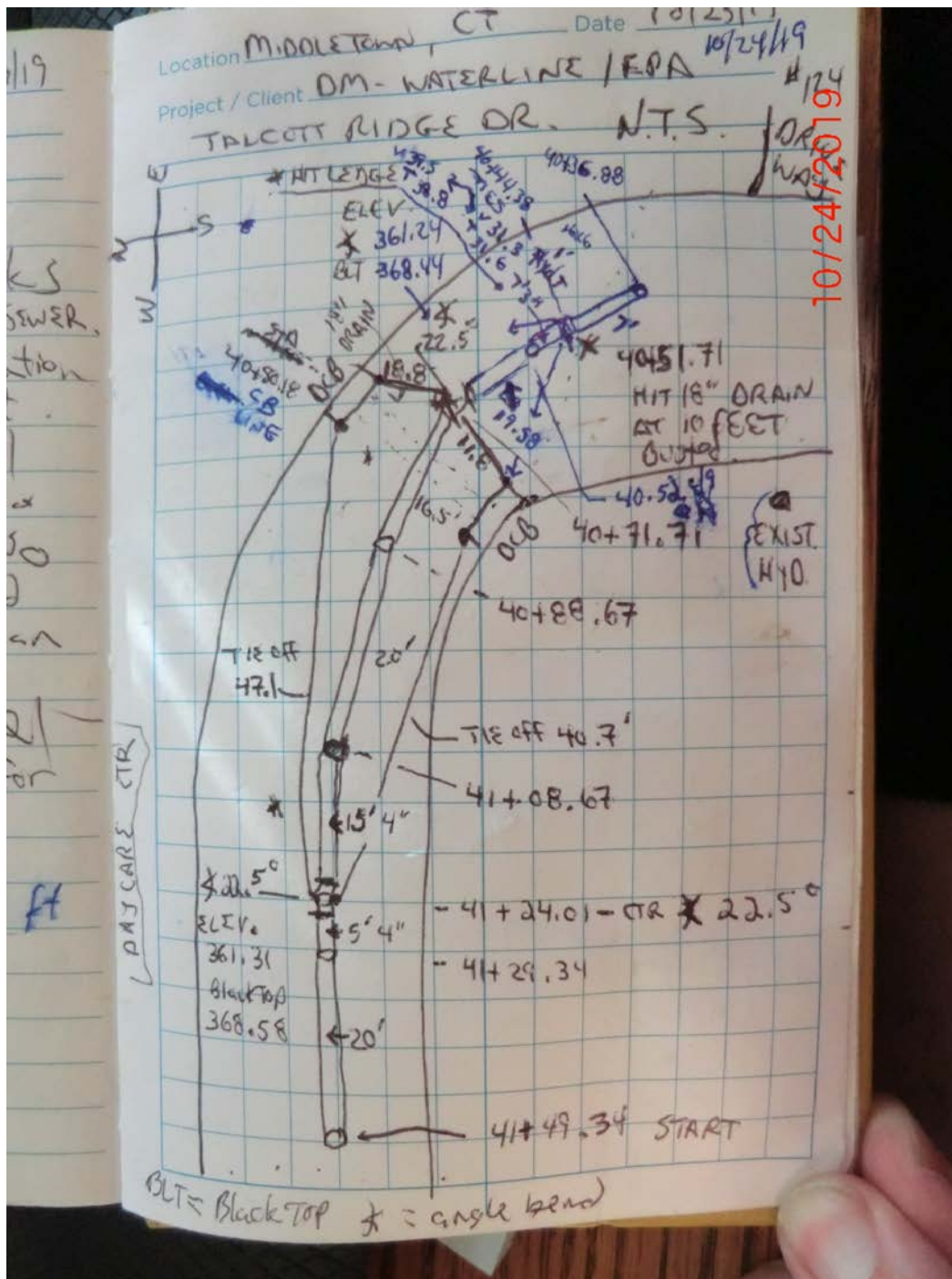


Figure 0 – Tie-offs and elevations. Black 10/23/19 Blue 10/24/19

## Daily Report

**Project:** Durham Meadows Pipeline Installation  
**Location:** Talcott Ridge Drive, Middletown CT  
**Project #:** AECOM: 60445033  
**Contractor:** Ludlow Construction

**Date:** October 24, 2019  
**Day of Week:** Thursday  
**Report No:** 20  
**Page:** 4 of 16



Figure 1 – Facing NE (124 Talcott Ridge seen in upper right of photo). Start of day. Excavating from 22.5-degree bend installed at Sta. 40+71.71 to 18" broken drainage line.



## Daily Report

**Project:** Durham Meadows Pipeline Installation  
**Location:** Talcott Ridge Drive, Middletown CT  
**Project #:** AECOM: 60445033  
**Contractor:** Ludlow Construction

**Date:** October 24, 2019  
**Day of Week:** Thursday  
**Report No:** 20  
**Page:** 5 of 16



**Figure 2 – Excavated to broken drain line. Cleaning up and exposing line so as to repair the hole.**

## Daily Report

<b>Project:</b>	Durham Meadows Pipeline Installation	<b>Date:</b>	October 24, 2019
<b>Location:</b>	Talcott Ridge Drive, Middletown CT	<b>Day of Week:</b>	Thursday
<b>Project #:</b>	AECOM: 60445033	<b>Report No:</b>	20
<b>Contractor:</b>	Ludlow Construction	<b>Page:</b>	6 of 16



Figure 3 – A partial segment of ADS pipe to be fitted over hole.



## Daily Report

<b>Project:</b>	Durham Meadows Pipeline Installation	<b>Date:</b>	October 24, 2019
<b>Location:</b>	Talcott Ridge Drive, Middletown CT	<b>Day of Week:</b>	Thursday
<b>Project #:</b>	AECOM: 60445033	<b>Report No:</b>	20
<b>Contractor:</b>	Ludlow Construction	<b>Page:</b>	7 of 16



Figure 4 – Cement 'gasket' set completely around hole in drain.

## Daily Report

**Project:** Durham Meadows Pipeline Installation  
**Location:** Talcott Ridge Drive, Middletown CT  
**Project #:** AECOM: 60445033  
**Contractor:** Ludlow Construction

**Date:** October 24, 2019  
**Day of Week:** Thursday  
**Report No:** 20  
**Page:** 8 of 16



Figure 5 – Segment of ADS pipe set over ‘gasket’ of cement.



## Daily Report

<b>Project:</b>	Durham Meadows Pipeline Installation	<b>Date:</b>	October 24, 2019
<b>Location:</b>	Talcott Ridge Drive, Middletown CT	<b>Day of Week:</b>	Thursday
<b>Project #:</b>	AECOM: 60445033	<b>Report No:</b>	20
<b>Contractor:</b>	Ludlow Construction	<b>Page:</b>	9 of 16



Figure 6 – Ends bricked in for added support and strength.

## Daily Report

<b>Project:</b>	Durham Meadows Pipeline Installation	<b>Date:</b>	October 24, 2019
<b>Location:</b>	Talcott Ridge Drive, Middletown CT	<b>Day of Week:</b>	Thursday
<b>Project #:</b>	AECOM: 60445033	<b>Report No:</b>	20
<b>Contractor:</b>	Ludlow Construction	<b>Page:</b>	10 of 16



Figure 7 – Same as previous.



## Daily Report

<b>Project:</b>	Durham Meadows Pipeline Installation	<b>Date:</b>	October 24, 2019
<b>Location:</b>	Talcott Ridge Drive, Middletown CT	<b>Day of Week:</b>	Thursday
<b>Project #:</b>	AECOM: 60445033	<b>Report No:</b>	20
<b>Contractor:</b>	Ludlow Construction	<b>Page:</b>	11 of 16



Figure 8 – Final brick face. This was done on both sides of pipe.



## Daily Report

<b>Project:</b>	Durham Meadows Pipeline Installation	<b>Date:</b>	October 24, 2019
<b>Location:</b>	Talcott Ridge Drive, Middletown CT	<b>Day of Week:</b>	Thursday
<b>Project #:</b>	AECOM: 60445033	<b>Report No:</b>	20
<b>Contractor:</b>	Ludlow Construction	<b>Page:</b>	12 of 16



Figure 9 – A second ‘gasket’ of cement set around entire cover. Note that the ends were fill in over the bricks.

## Daily Report

**Project:** Durham Meadows Pipeline Installation  
**Location:** Talcott Ridge Drive, Middletown CT  
**Project #:** AECOM: 60445033  
**Contractor:** Ludlow Construction

**Date:** October 24, 2019  
**Day of Week:** Thursday  
**Report No:** 20  
**Page:** 13 of 16



Figure 10 – Not shown, is geotextile fabric placed over the entire patched hole, then covered by 12 inches of gravel to raise the bed to the elevation needed to lay the 16" DI pipe over this section.



## Daily Report

**Project:** Durham Meadows Pipeline Installation  
**Location:** Talcott Ridge Drive, Middletown CT  
**Project #:** AECOM: 60445033  
**Contractor:** Ludlow Construction

**Date:** October 24, 2019  
**Day of Week:** Thursday  
**Report No:** 20  
**Page:** 14 of 16



Figure 11 – Installation of Hydrant T section. Note that the T points up at first to fit through the trench box and is then rotated into the proper position once pipe is laid down.



## Daily Report

<b>Project:</b>	Durham Meadows Pipeline Installation	<b>Date:</b>	October 24, 2019
<b>Location:</b>	Talcott Ridge Drive, Middletown CT	<b>Day of Week:</b>	Thursday
<b>Project #:</b>	AECOM: 60445033	<b>Report No:</b>	20
<b>Contractor:</b>	Ludlow Construction	<b>Page:</b>	15 of 16



Figure 12 – Excavating a slightly larger hole for the installation of the 12” water line Tee. The existing 12-inch water line will be connected at a later time. Note that the Large Excavator has been switched out for the smaller Rubber Wheeled Excavator. This was done to avoid damaging the driveway of 124 Talcott Ridge, which is located behind the excavator to the right of this picture. Also note that the town ROW and existing valve assembly is located on the other side of this trench to the north side. Picture is taken facing north.



## Daily Report

<b>Project:</b>	Durham Meadows Pipeline Installation	<b>Date:</b>	October 24, 2019
<b>Location:</b>	Talcott Ridge Drive, Middletown CT	<b>Day of Week:</b>	Thursday
<b>Project #:</b>	AECOM: 60445033	<b>Report No:</b>	20
<b>Contractor:</b>	Ludlow Construction	<b>Page:</b>	16 of 16



Figure 13 – Three valve assembly to be installed at location shown in Figure 12. Includes 2x16” Butterfly valves on either side and a 12” Gate valve in the center attached to a 16x12 Tee-section. Pipe length is 6.34 feet, physical length is approximately 7 feet.