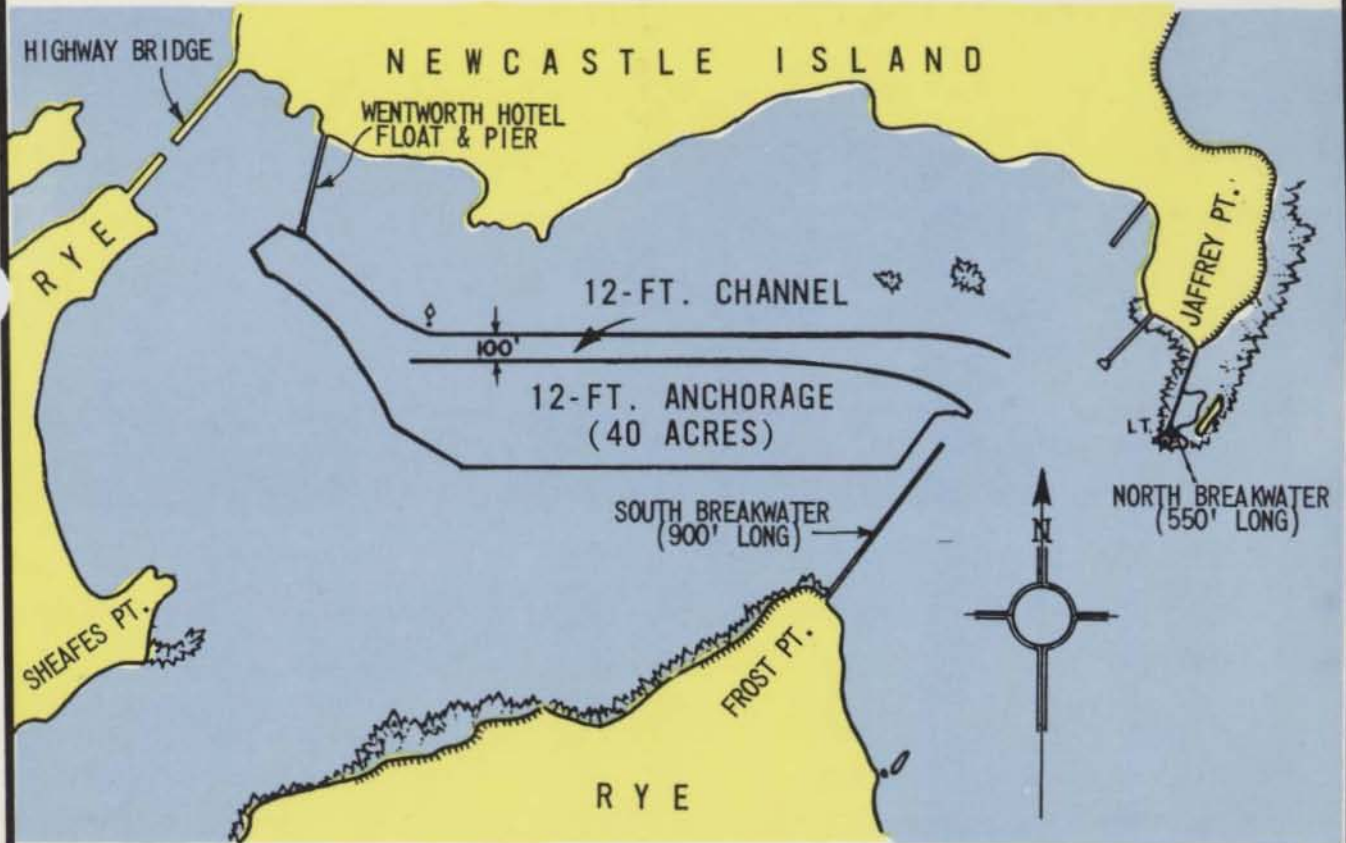
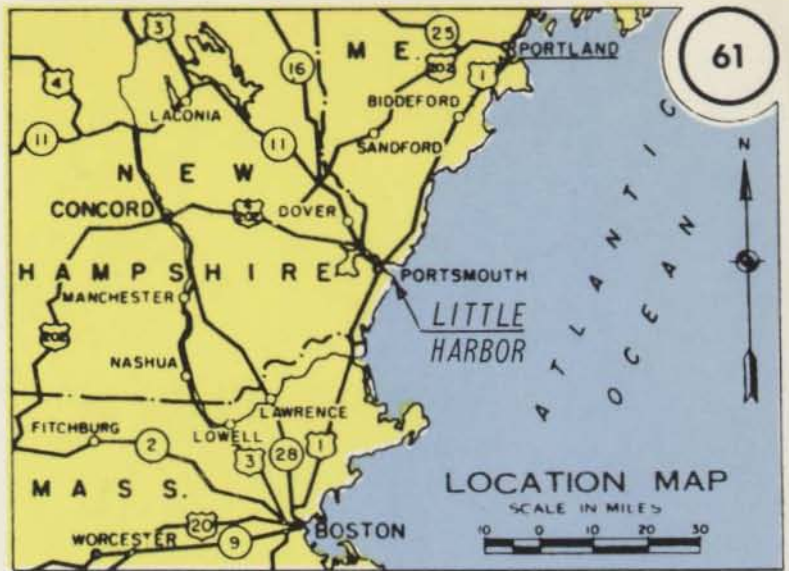


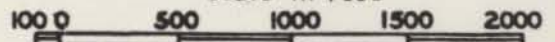
Bridge Clearance
New Castle-Rye (Bascule)
Hor. 29 Ft.
Vert. 12 Ft. M.H.W.



LITTLE HARBOR, N.H.

30 SEPTEMBER 1978

Scale in Feet



DEPARTMENT OF THE ARMY
NEW ENGLAND DIVISION, CORPS OF ENGINEERS
WALTHAM, MASS.