

GENERAL NOTES:

1. Soundings are in feet and tenths and refer to the plane of Mean Lower Low Water (MLLW) 1983-2001 Tidal Epoch.
2. Topography shown is from previous surveys and/or NOAA Chart No. 13285. All topography, including shoreline, bridges, piers, etc., is located approximate unless otherwise noted. Topography should be used as a general reference only.
3. Bench Mark Data: BM 0411A (1998) is a NOS Tidal Station disk set in the east end of the concrete retaining wall along the north side of Cochecho Street near George's Marina, 0.1 mile east on Cochecho Street from its intersection with Portland Street, 44.8 feet east of power pole No. 119-14, 15.0 feet north of the centerline of Cochecho Street, 2.4 feet west of the east end of the wall, and 3.3 feet above ground level. Elevation is 24.59 feet above MLLW.
4. Coordinates shown are based on the Transverse Mercator Grid System for the State of New Hampshire and NAD 1983.
5. Survey was performed using a Reson 8124 multibeam echosounder system with a 200 kHz transducer. Vessel positioning and vertical depths were obtained utilizing a Malne Technical Source RTK base station at Berwick, Maine.
6. The sounding information shown on these maps represents the SHORTEST soundings of those obtained from hydrographic surveys conducted during December 2010.
7. The sounding information depicted on these maps should NOT be used to determine volumes. Volumes are determined from more sounding information than shown. Additional sounding information is available upon request.
8. The information depicted on these maps represents the results of surveys made on the dates indicated and can only be considered as indicating the general conditions existing at that time.
9. Entrance to Cochecho River requires passage under bridges and overhead power cables. See NOAA Charts 13283 & 13285 for span. Cable elevations are based on MHW.
10. Field Book: R&H 2422

5.5-foot depth contour shown thus:
 Refer to Survey No. 11-1096
 Survey by: Jeffrey W. Preston and Crew

GENERAL PLAN
SCALE: 1" = 500'

U.S. ARMY CORPS OF ENGINEERS
NEW ENGLAND DISTRICT
CONCORD, MASSACHUSETTS
www.nae.usace.army.mil

DESIGNED BY: [Signature]
 SUBMITTED BY: [Signature]
 CHECKED BY: [Signature]
 DATE: 2/26/11

PROJECT NO: 11-1096
 DRAWING CODE: 2876
 SHEET NO: V-101

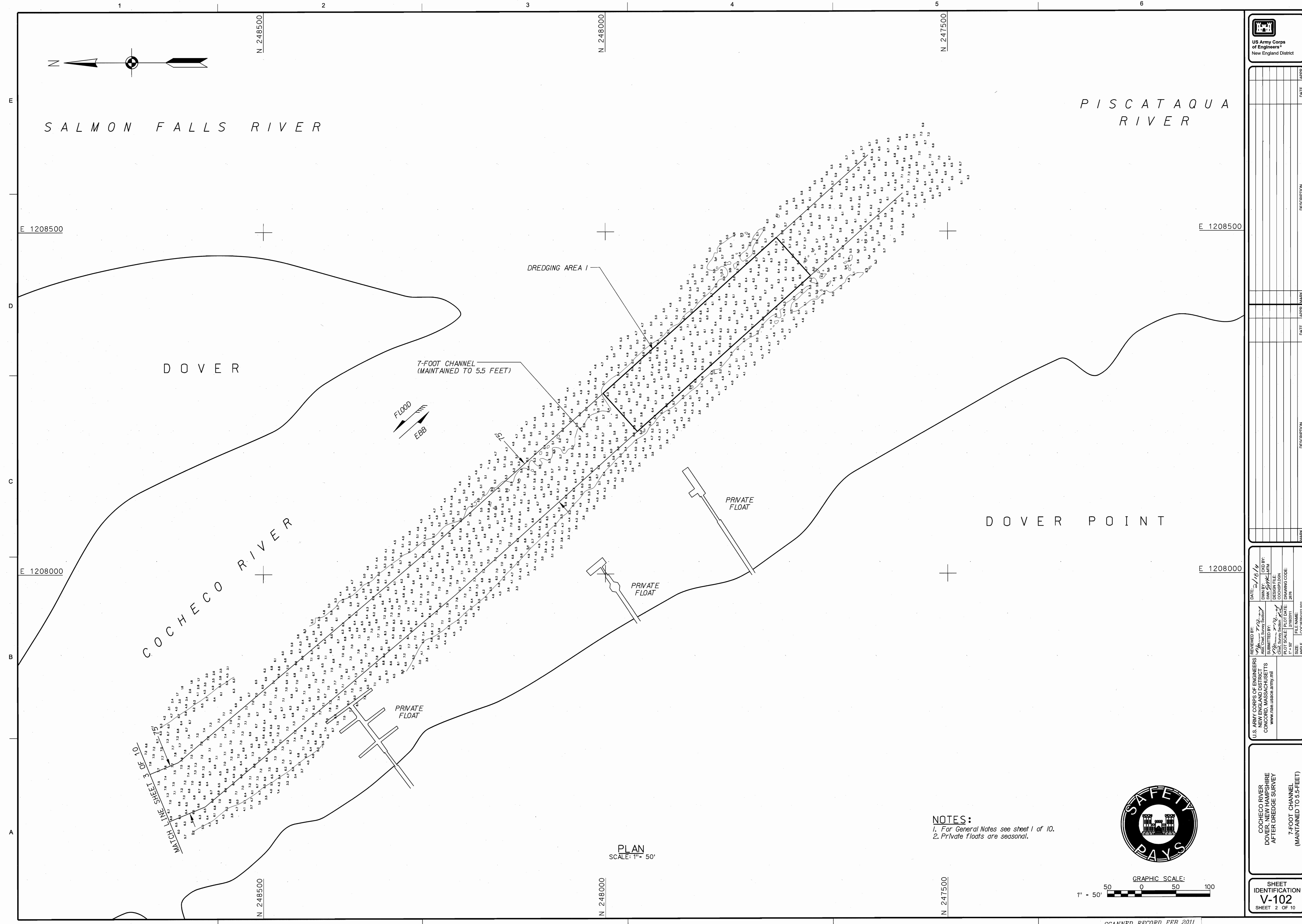
SAFETY PAYS

COACHECO RIVER
DOVER, NEW HAMPSHIRE
AFTER DREDGE SURVEY
7-FOOT CHANNEL
(MAINTAINED TO 6.5-FEET)

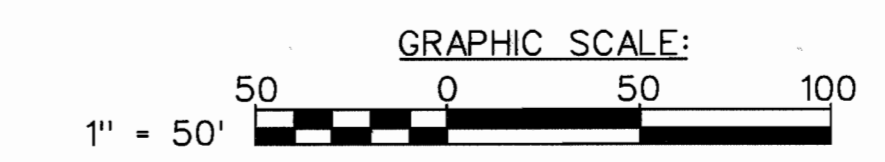
SHEET IDENTIFICATION
V-101
SHEET 1 OF 10

GRAPHIC SCALE:
1" = 500'
500 0 500 1000

SCANNED RECORD FEB 2011



NOTES:
1. For General Notes see sheet 1 of 10.
2. Private floats are seasonal.



US Army Corps of Engineers
New England District

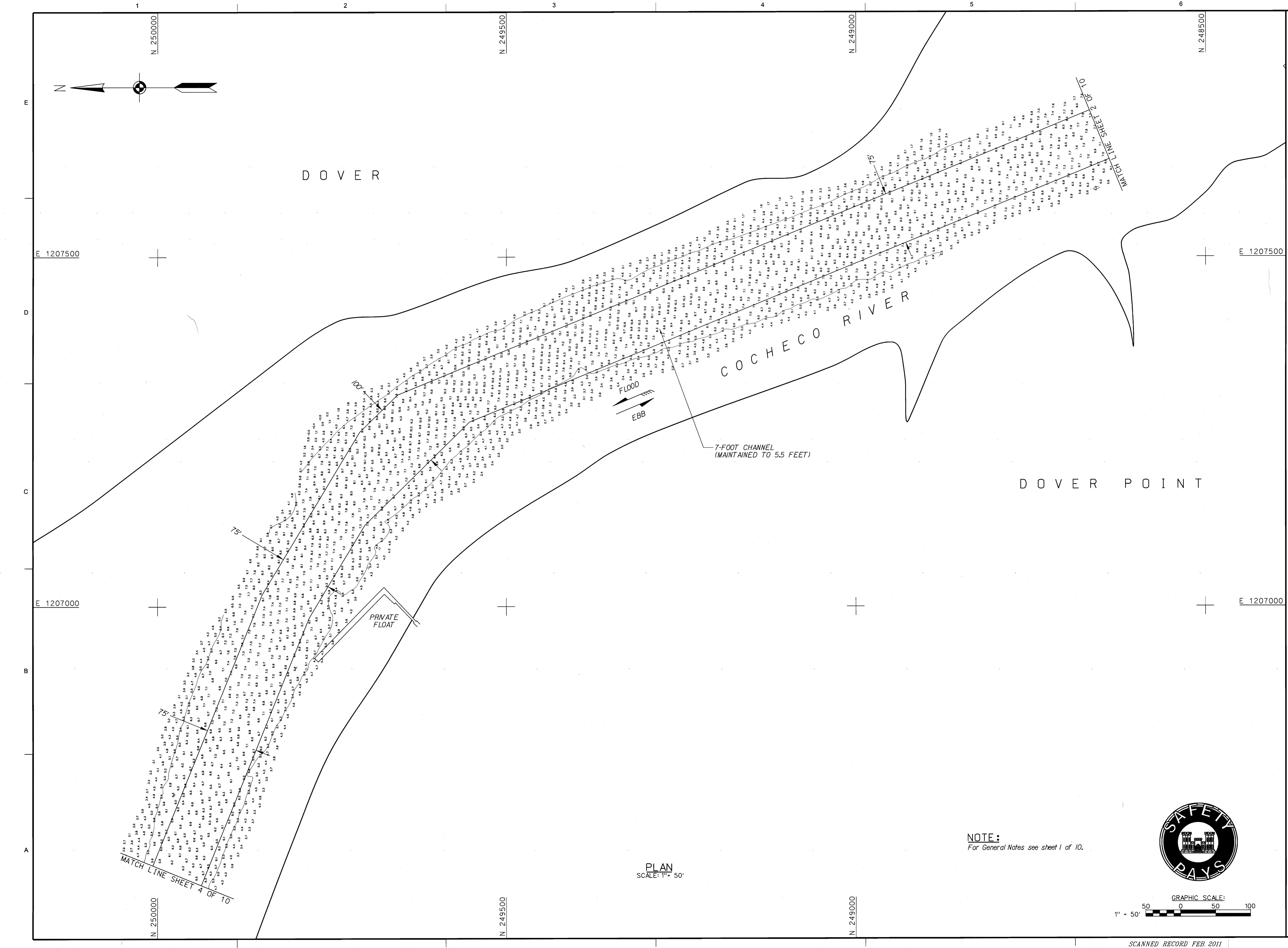
DATE	APPR.	MARK.	DESCRIPTION

DATE	APPR.	MARK.	DESCRIPTION

REVIEWED BY: <i>John P. Kelly</i>	DATE: <i>2/18/11</i>	FILE NAME: <i>COC2RIV102.202</i>
DRAWN BY: <i>SW/ GJK/ATM</i>	SCALE: <i>1" = 50'</i>	PROJECT CODE: <i>295001</i>
DESIGNED BY: <i>GJK</i>	DATE: <i>2/18/11</i>	ISSUED CODE: <i>2011</i>
DATE: <i>2/18/11</i>	SCALE: <i>1" = 50'</i>	ISSUED CODE: <i>2011</i>

U.S. ARMY CORPS OF ENGINEERS NEW ENGLAND DISTRICT CONCORD, MASSACHUSETTS www.nhe.usace.army.mil	COCHeco RIVER DOVER, NEW HAMPSHIRE AFTER DREDGE SURVEY 7-FOOT CHANNEL (MAINTAINED TO 5.5 FEET)
------------------------------------------------------------------------------------------------------------------------------------------------------	------------------------------------------------------------------------------------------------------------

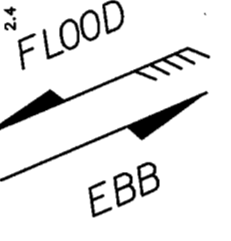
SHEET IDENTIFICATION V-102 SHEET 2 OF 10



DOVER

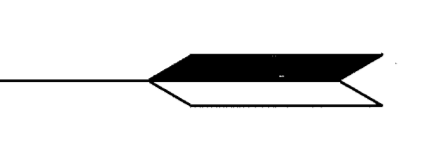
COCHECHO RIVER

DOVER POINT



7-FOOT CHANNEL
(MAINTAINED TO 5.5 FEET)

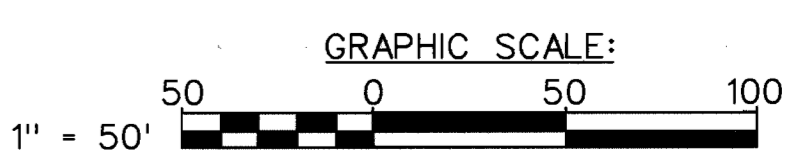
PRIVATE FLOAT



MATCH LINE SHEET 4 OF 10

MATCH LINE SHEET 2 OF 10

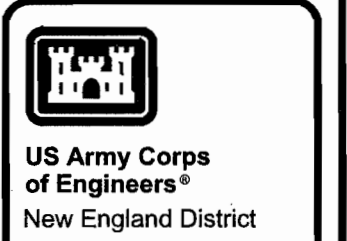
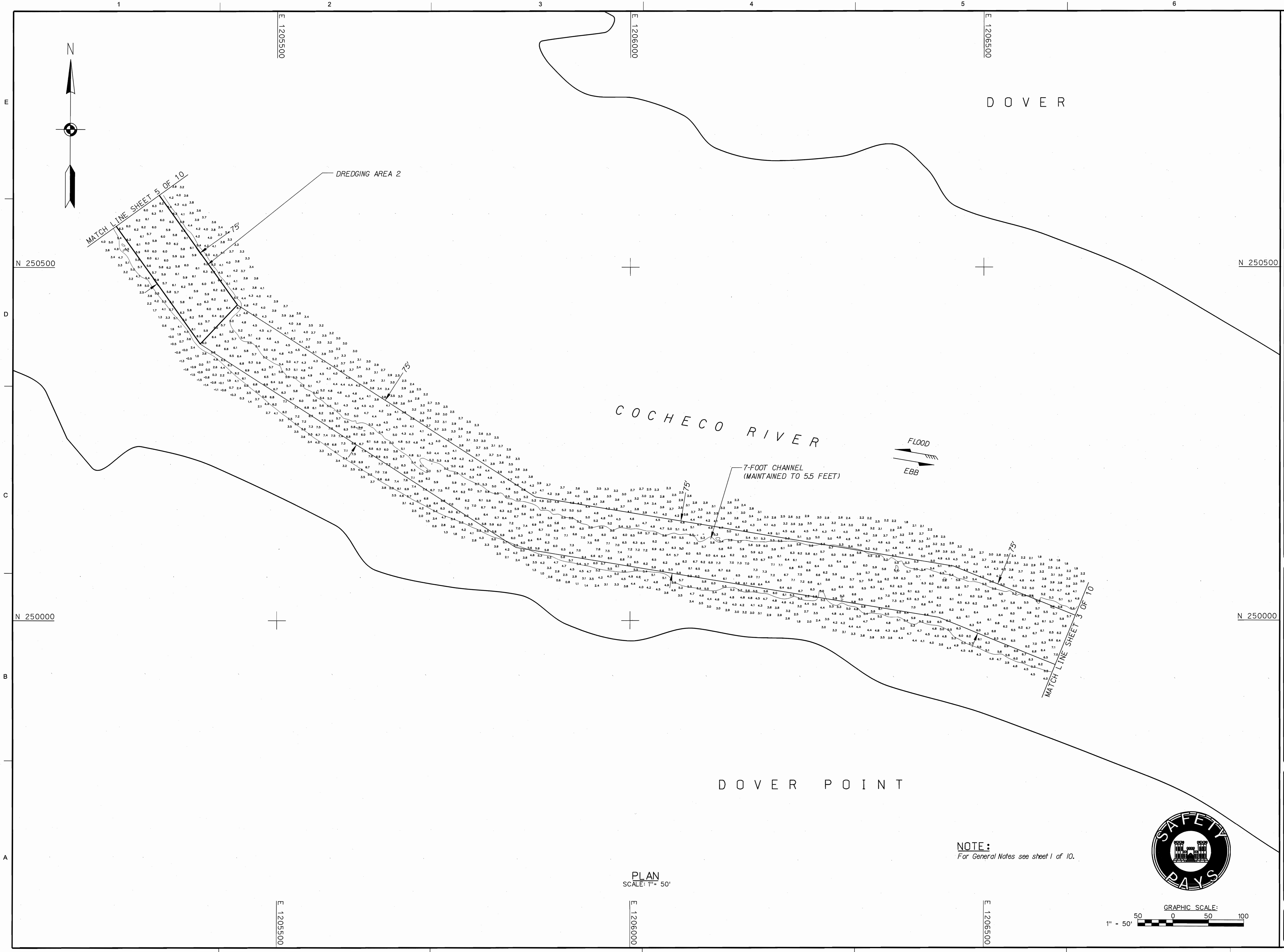
PLAN
SCALE: 1" = 50'



NOTE:
For General Notes see sheet 1 of 10.



DATE: 2/15/22	DESCRIPTION:
REVIEWED BY: [Signature]	DATE:
DESIGN FILE: [Signature]	APPROVAL MARK:
COCHECHO RIVER DOVER POINT	DATE:
FILE NAME: [Signature]	DESCRIPTION:
SIZE: 1" x 24"	DATE:
ANSI F: [Signature]	DESCRIPTION:
COCHECHO RIVER DOVER NEW HAMPSHIRE AFTER DREDGE SURVEY	DESCRIPTION:
7-FOOT CHANNEL (MAINTAINED TO 5.5 FEET)	DESCRIPTION:
SHEET IDENTIFICATION V-103	DESCRIPTION:
SHEET 3 OF 10	DESCRIPTION:



US Army Corps of Engineers
New England District

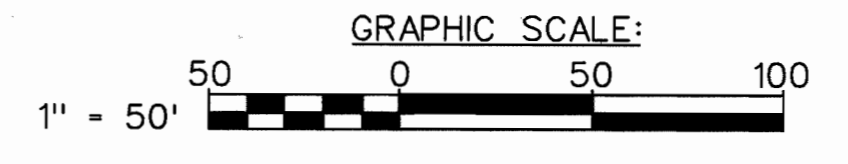
DATE	APPR.	MARK	DESCRIPTION

U.S. ARMY CORPS OF ENGINEERS
 NEW ENGLAND DISTRICT
 CONCORD, MASSACHUSETTS
 www.usace.army.mil
 DATE: 2/10/11
 DWN BY: JLM/ML
 SWK/SY/SJW
 SUBMITTED BY: JLM/ML
 DESIGN FILE: 7-10
 PLOT SCALE: 1" = 50'
 FILE NAME: COCHECO.DWG
 SIZE: 1" = 50'
 PAPER: COCHECO.DWG

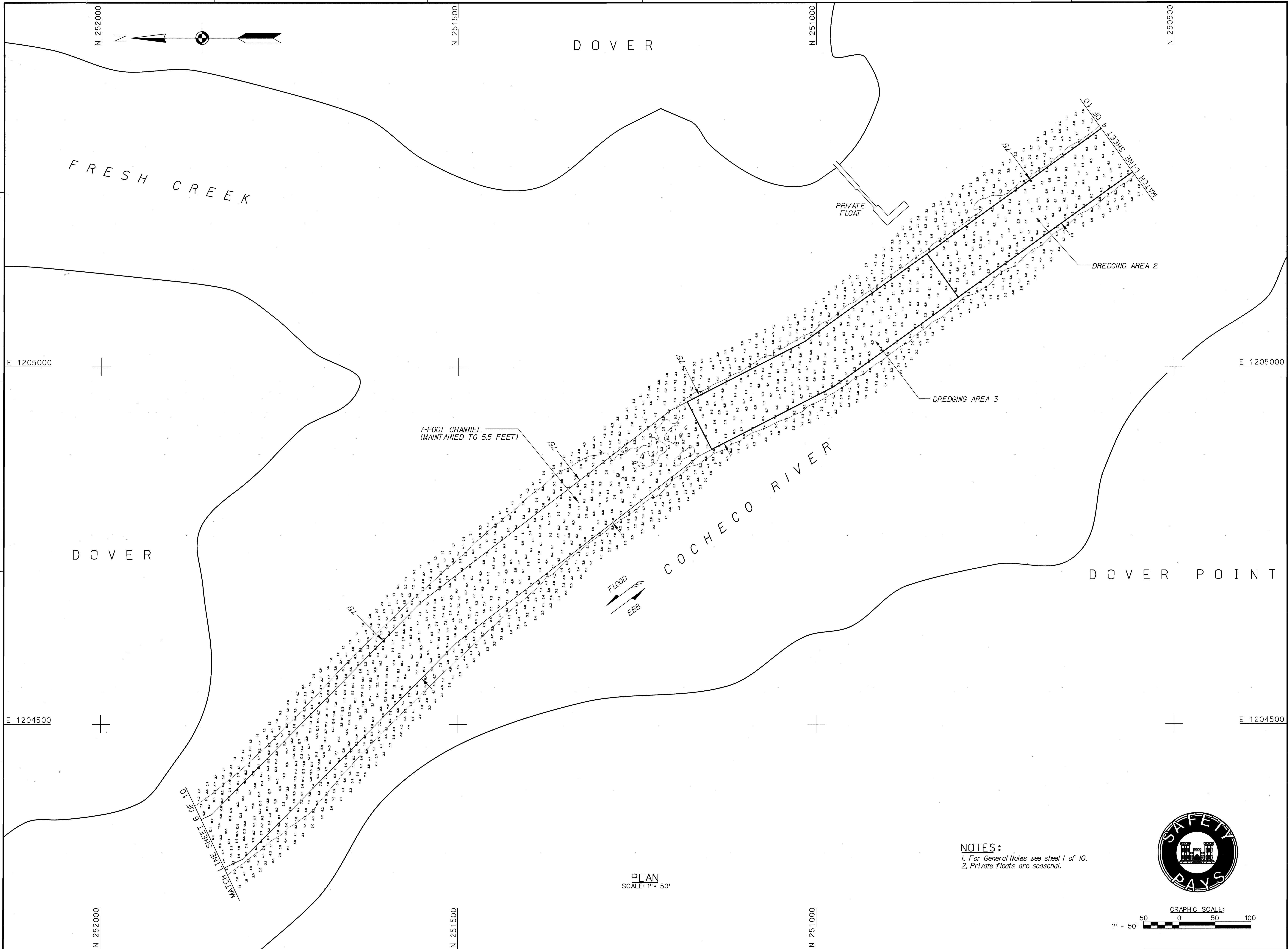
COCHECO RIVER
 DOVER NEW HAMPSHIRE
 AFTER DREDGE SURVEY
 7-FOOT CHANNEL
 (MAINTAINED TO 5.5-FEET)

SHEET
 IDENTIFICATION
V-104
 SHEET 4 OF 10

NOTE:
 For General Notes see sheet 1 of 10.

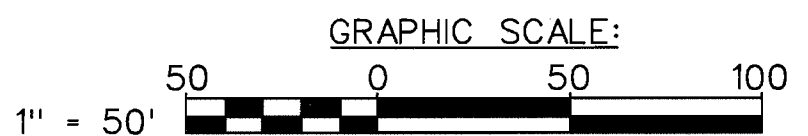


PLAN
 SCALE: 1" = 50'

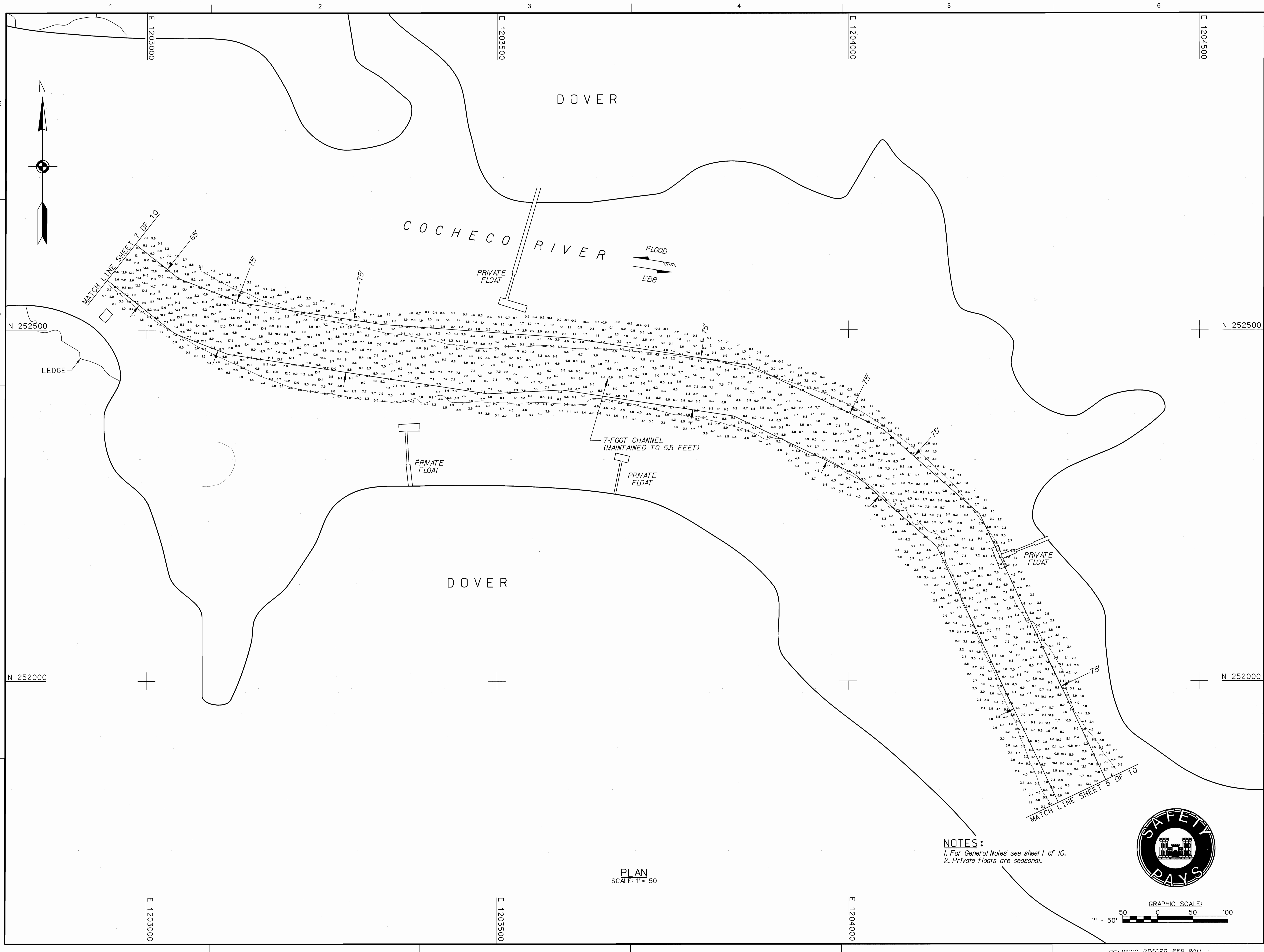


PLAN
SCALE: 1" = 50'

NOTES:
1. For General Notes see sheet 1 of 10.
2. Private floats are seasonal.

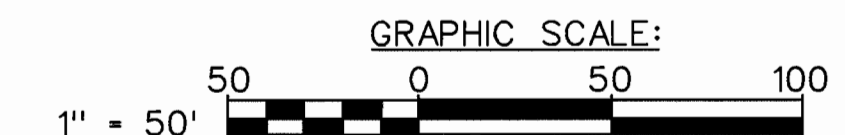


<p>US Army Corps of Engineers New England District</p>	
REVIEWED BY: M. J. [Signature]	DATE: 2/6/11
DESIGNED BY: M. J. [Signature]	DATE: 2/6/11
PLotted BY: M. J. [Signature]	DATE: 2/6/11
FILE NAME: COCH2010V055	SIZE: 100
<p>U.S. ARMY CORPS OF ENGINEERS NEW ENGLAND DISTRICT CONCORD, MASSACHUSETTS www.nae.usace.army.mil</p>	
<p>COCHECHO RIVER DOVER, NEW HAMPSHIRE AFTER DREDGE SURVEY 7-FOOT CHANNEL (MAINTAINED TO 5.5-FEET)</p>	
<p>SHEET IDENTIFICATION V-105 SHEET 5 OF 10</p>	
DESCRIPTION	APPR. MARK
DESCRIPTION	DATE



PLAN
SCALE: 1" = 50'

NOTES:
1. For General Notes see sheet 1 of 10.
2. Private floats are seasonal.



 US Army Corps of Engineers New England District	
DATE: _____ DRAWING NO.: _____ DESIGN FILE: _____ CONCORD, MASSACHUSETTS www.nhe.usace.army.mil	CHECK BY: _____ INITIAL: _____ DESIGN CODE: _____ DRAWING CODE: _____ PLOT SCALE: _____ PLOT DATE: _____ FILE NAME: _____ SIZE: _____ ANSF: _____
COCHECHO RIVER DOVER, NEW HAMPSHIRE AFTER DREDGE SURVEY 7-FOOT CHANNEL (MAINTAINED TO 5.5 FEET)	SHEET IDENTIFICATION V-106 SHEET 6 OF 10

1

2

3

4

5

6



US Army Corps of Engineers
New England District

DATE
APPRE

DESCRIPTION
APPRE
MARK

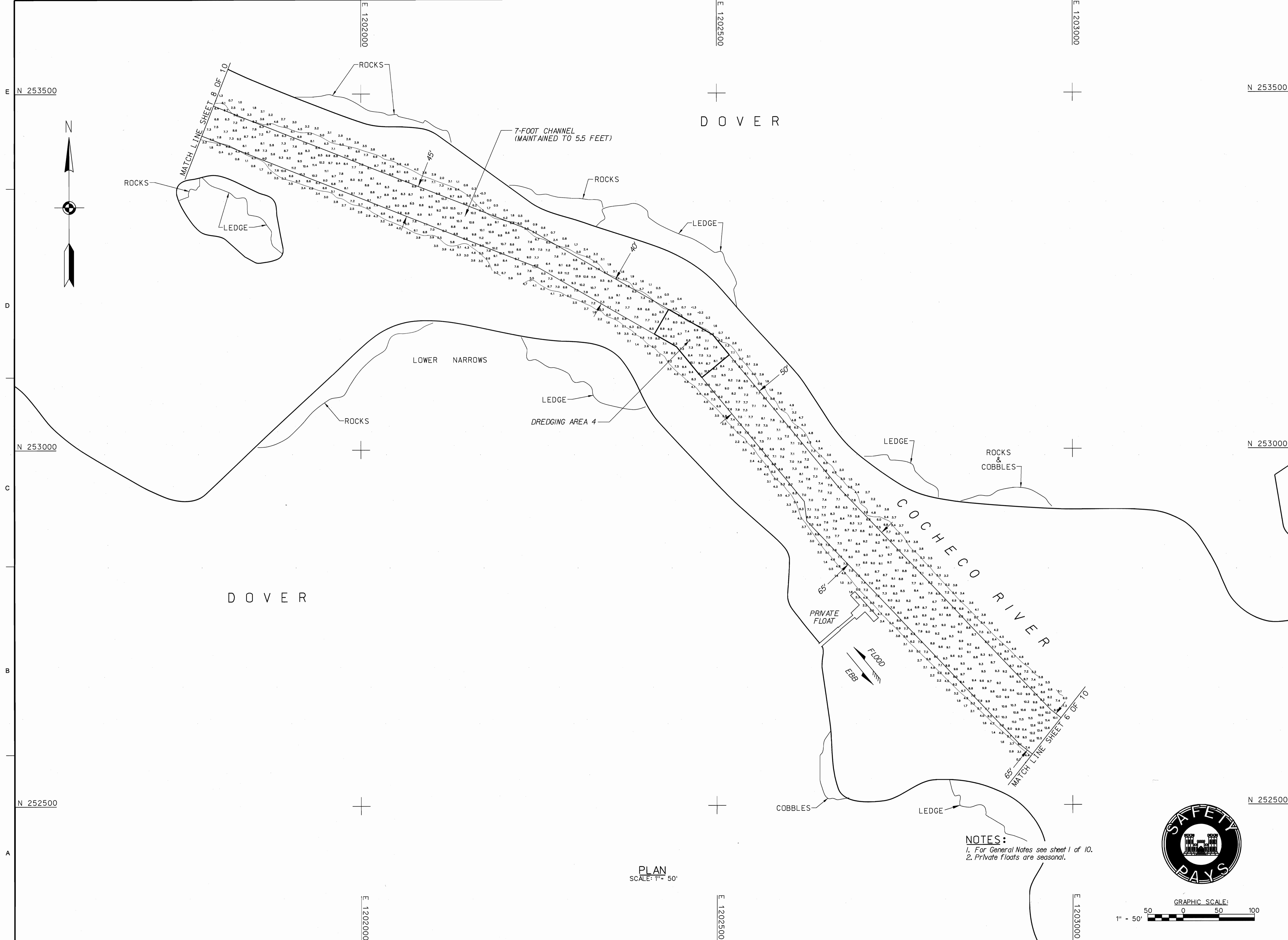
DATE
APPRE

DESCRIPTION
MARK

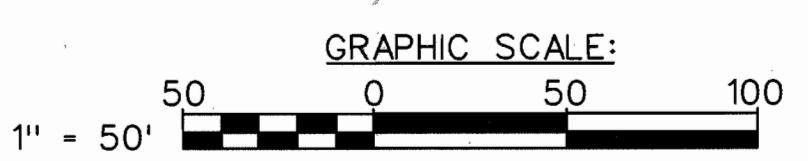
REVIEWED BY: [Signature]
DATE: 2/18/11
DESIGNED BY: [Signature]
DATE: 2/18/11
DRAWING CODE: [Code]
FILE NAME: [Name]
SCALE: 1" = 50'
ANSI: [Code]

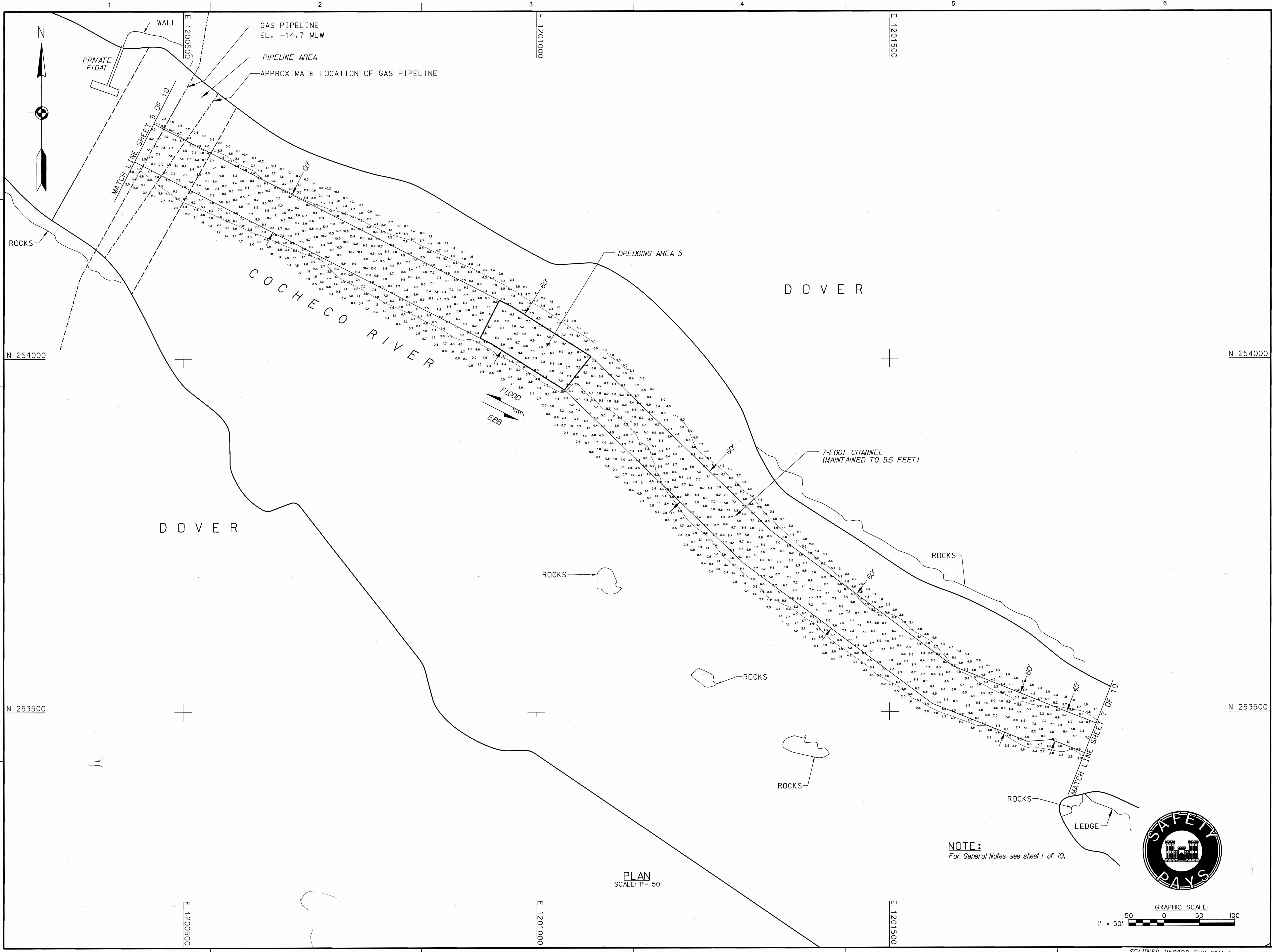
COCHECO RIVER
DOVER, NEW HAMPSHIRE
AFTER DREDGE SURVEY
7-FOOT CHANNEL
(MAINTAINED TO 5.5-FEET)

SHEET IDENTIFICATION
V-107
SHEET 7 OF 10



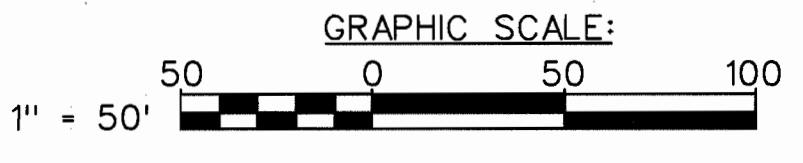
NOTES:
1. For General Notes see sheet 1 of 10.
2. Private floats are seasonal.



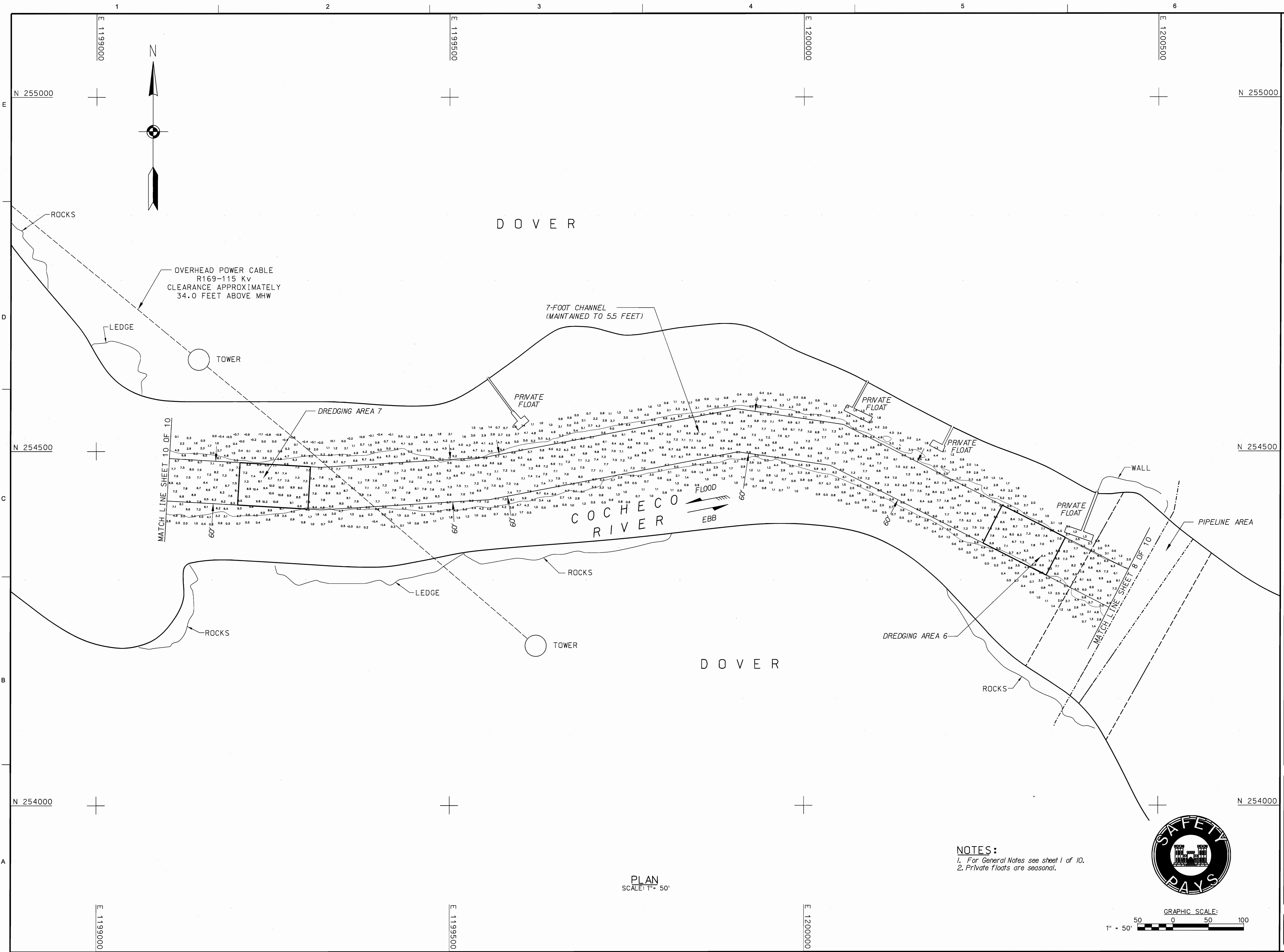


PLAN
SCALE: 1" = 50'

NOTE:
For General Notes see sheet 1 of 10.



US Army Corps of Engineers New England District		
REVIEWED BY: <i>[Signature]</i> DATE: 2/18/11 DWG BY: <i>[Signature]</i> DESIGNED BY: <i>[Signature]</i> CHECKED BY: <i>[Signature]</i> FILE NAME: COCH20701V108.SSB SIZE: 125K	PROJECT: COCH20701 DRAWING CODE: 108 SHEET: 8 OF 10	U.S. ARMY CORPS OF ENGINEERS NEW ENGLAND DISTRICT CONCORD, MASSACHUSETTS www.nhe.usace.army.mil
COCHECO RIVER DOVER, NEW HAMPSHIRE AFTER DREDGE SURVEY 7-FOOT CHANNEL (MAINTAINED TO 5.5 FEET)		
SHEET IDENTIFICATION V-108 SHEET 8 OF 10		



US Army Corps of Engineers
New England District

NO.	DATE	DESCRIPTION

DATE	CHK BY:
2/18/11	SKW/SYP/MTN

DESIGN FILE	DESIGNER	PLOT DATE	DRAWING CODE

FILE NAME:	SIZE:
COCHR070359	1" = 50'

REVIEWED BY: *[Signature]*
DATE: 2/18/11
CHK BY: SKW/SYP/MTN
DESIGN FILE: *[Blank]*
DESIGNER: *[Blank]*
PLOT DATE: *[Blank]*
DRAWING CODE: *[Blank]*
FILE NAME: COCHR070359
SIZE: 1" = 50'

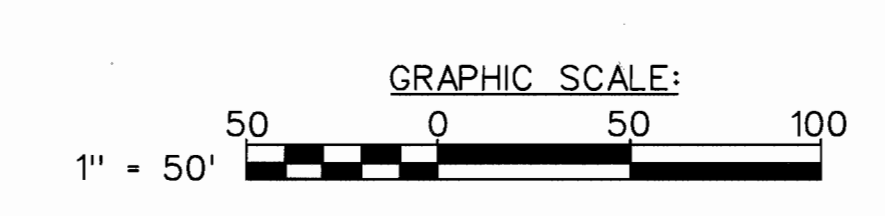
U.S. ARMY CORPS OF ENGINEERS
NEW ENGLAND DISTRICT
CONCORD, MASSACHUSETTS
www.usace.army.mil

COCHECHO RIVER
DOVER, NEW HAMPSHIRE
AFTER DREDGE SURVEY

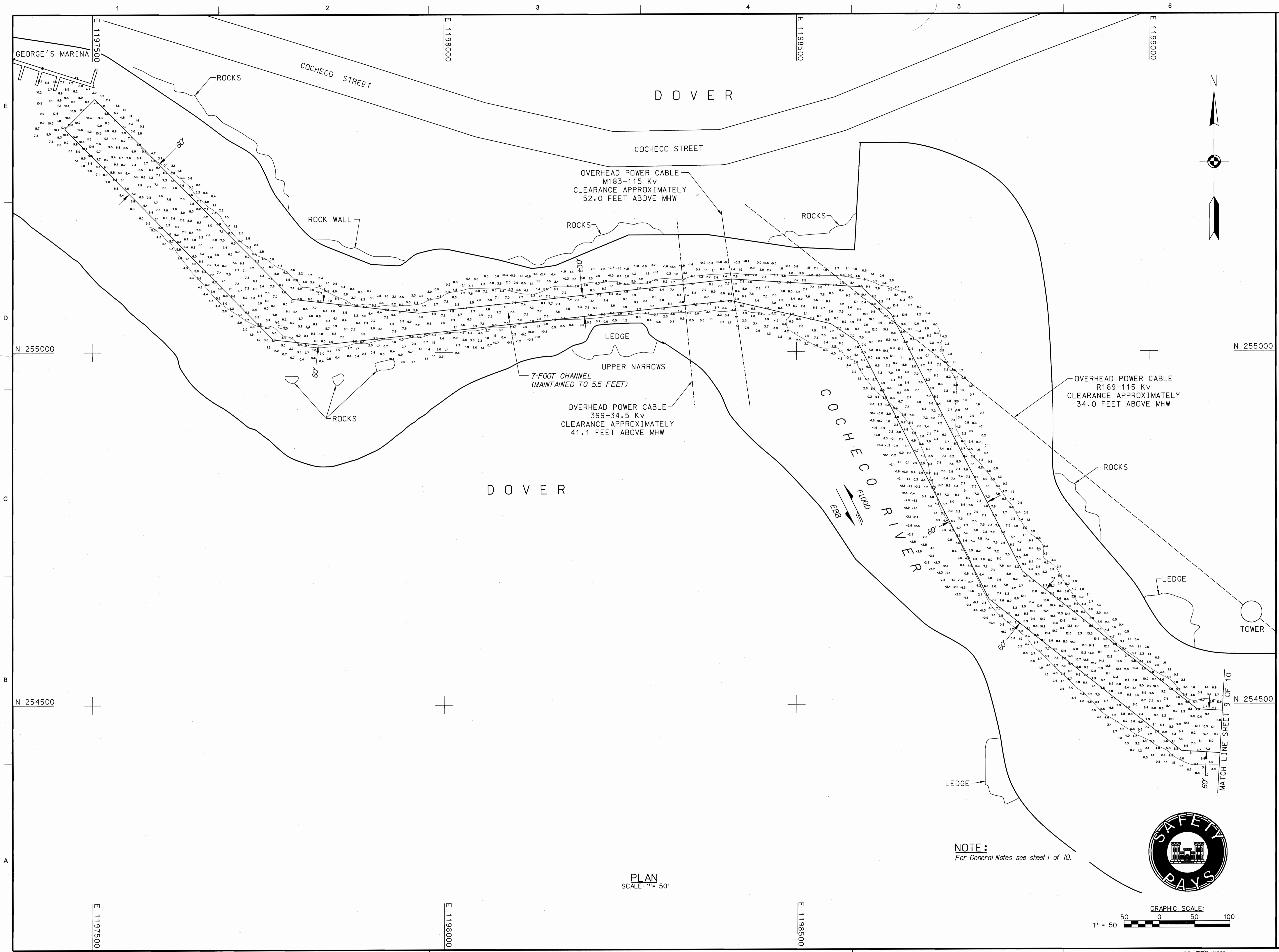
7-FOOT CHANNEL
(MAINTAINED TO 5.5-FEET)

SHEET IDENTIFICATION
V-109
SHEET 9 OF 10

NOTES:
 1. For General Notes see sheet 1 of 10.
 2. Private Floats are seasonal.



PLAN
SCALE: 1" = 50'



US Army Corps of Engineers
 New England District

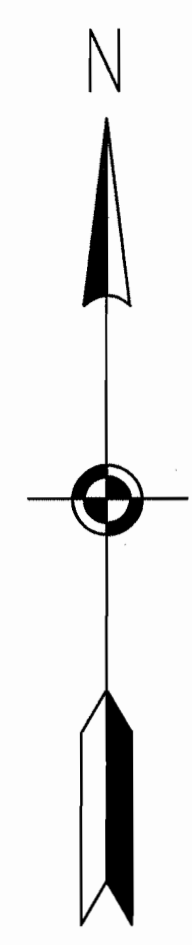
DATE	APPY	DESCRIPTION

DATE: 2/8/17
 DESIGNED BY: SWK
 DRAWN BY: SWK
 CHECKED BY: SWK
 SUBMITTED BY: SWK
 DESIGNED BY: SWK
 DRAWN BY: SWK
 CHECKED BY: SWK
 SUBMITTED BY: SWK

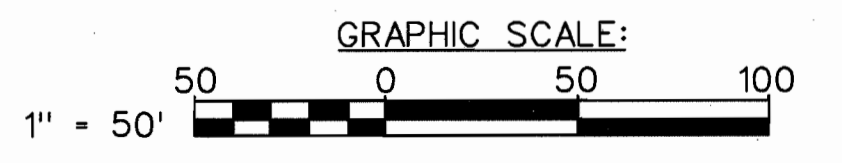
U.S. ARMY CORPS OF ENGINEERS
 NEW ENGLAND DISTRICT
 CONCORD, MASSACHUSETTS
 www.usace.army.mil

COCHECO RIVER
 DOVER, NEW HAMPSHIRE
 AFTER DREDGE SURVEY
 7-FOOT CHANNEL
 (MAINTAINED TO 5.5 FEET)

SHEET IDENTIFICATION
V-110
 SHEET 10 OF 10



NOTE:
 For General Notes see sheet 1 of 10.



PLAN
 SCALE: 1" = 50'