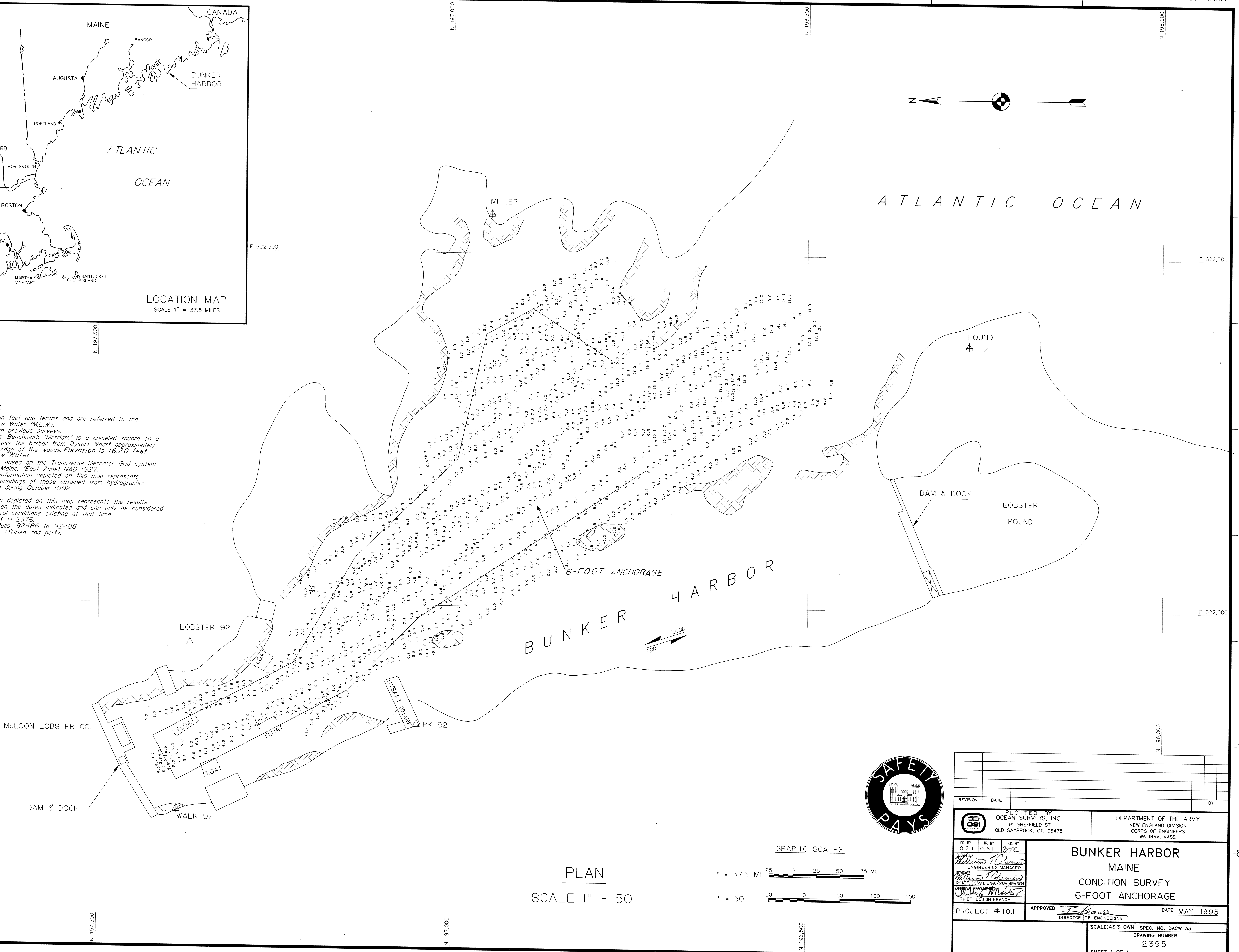


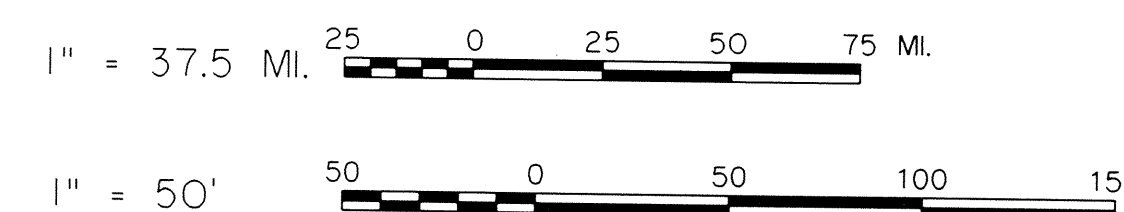
GENERAL NOTES:

1. Soundings are in feet and tenths and are referred to the plane of Mean Low Water (MLW).
2. Topography from previous surveys.
3. Benchmark data: Benchmark "Merriam" is a chiseled square on a point of ledge across the harbor from Dysart Wharf approximately 6 feet from the edge of the woods. Elevation is 16.20 feet above Mean Low Water.
4. Coordinates are based on the Transverse Mercator Grid system for the State of Maine, (East Zone) NAD 1927.
5. The sounding information depicted on this map represents the SHOALEST soundings of those obtained from hydrographic surveys conducted during October 1992.
6. The information depicted on this map represents the results of surveys made on the dates indicated and can only be considered as indicating general conditions existing at that time.
7. Field Book: R & H 2376.
Depthsounder Rolls: 92-186 to 92-188
Survey by: P.K. O'Brien and party.



PLAN
SCALE 1" = 50'

GRAPHIC SCALES



REVISION		DATE	BY
PLOTTED BY: OCEAN SURVEYS, INC. 91 SHEFFIELD ST. OLD SAYBROOK, CT. 06475		DEPARTMENT OF THE ARMY NEW ENGLAND DIVISION CORPS OF ENGINEERS WALTHAM, MASS.	
DR. BY O.S.I. SURVEYED ENGINEERING MANAGER	OK. BY O.S.I. ENGINEERING MANAGER	BUNKER HARBOR MAINE CONDITION SURVEY 6-FOOT ANCHORAGE	
CHIEF, COAST ENG./SUR BRANCH	CHIEF, DESIGN BRANCH		
PROJECT # 10.1	APPROVED	DIRECTOR OF ENGINEERING	DATE MAY 1995
SCALE: AS SHOWN		SPEC. NO. DACW 33	DRAWING NUMBER
		2395	SHEET 1 OF 1

SEE NOAA CHART 13324