



Legend
 Weekly



**US Army Corps
of Engineers®**
 New England District



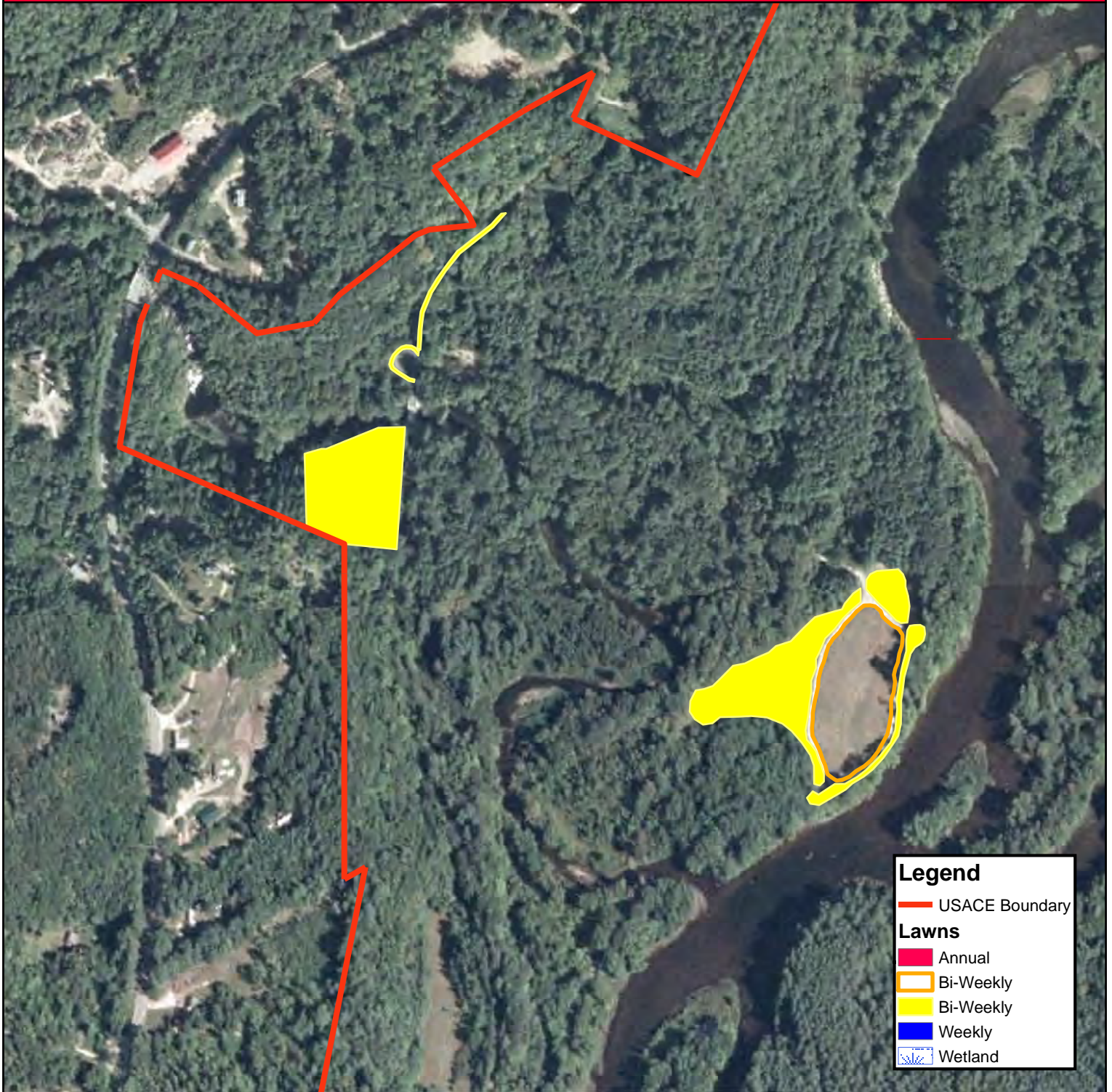
Ledgeview Overlook
 Franklin, NH.
 Approximately 0.3 acres

GIS Sources: Google Earth

GROUPS MAINTENANCE - MAP 1 of 4

FRANKLIN FALLS DAM
 US ARMY CORPS OF ENGINEERS
 NEW ENGLAND DISTRICT
 FRANKLIN, SANBORNTON, NEW HAMPTON
 BRISTOL & HILL NEW HAMPSHIRE





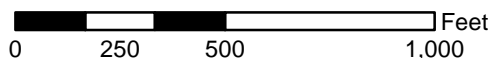
Legend

- USACE Boundary
- Lawns**
 - Annual
 - Bi-Weekly
 - Bi-Weekly
 - Weekly
 - Wetland



**US Army Corps
of Engineers®**
New England District

Profile Falls/Periwinkle Area
Bristol, NH. Approximately
Approximately 6.1 acres



GIS Sources: USACE & GRANIT

GROUND MAINTENANCE - MAP 2 OF 4

FRANKLIN FALLS DAM
US ARMY CORPS OF ENGINEERS
NEW ENGLAND DISTRICT
FRANKLIN, SANBORNTON, NEW HAMPTON
BRISTOL & HILL NEW HAMPSHIRE





Bi-Weekly



**US Army Corps
of Engineers®**
New England District



Coolidge Woods Dedication Area
New Hampton, NH. Approximately
Approximately 0.3 acres

GIS Sources: Google Earth

GROUND'S MAINTENANCE - MAP 3 of 4

FRANKLIN FALLS DAM
US ARMY CORPS OF ENGINEERS
NEW ENGLAND DISTRICT
FRANKLIN, SANBORNTON, NEW HAMPTON
BRISTOL & HILL NEW HAMPSHIRE





Bi-Weekly



**US Army Corps
of Engineers®**
New England District



Coolidge Woods Recreation Area
New Hampton, NH.
Approximately 0.20 acres

GIS Sources: Google Earth

GROUPS MAINTENANCE - MAP 4 of 4

FRANKLIN FALLS DAM
US ARMY CORPS OF ENGINEERS
NEW ENGLAND DISTRICT
FRANKLIN, SANBORNTON, NEW HAMPTON
BRISTOL & HILL NEW HAMPSHIRE



BUILDING STRONG®

®