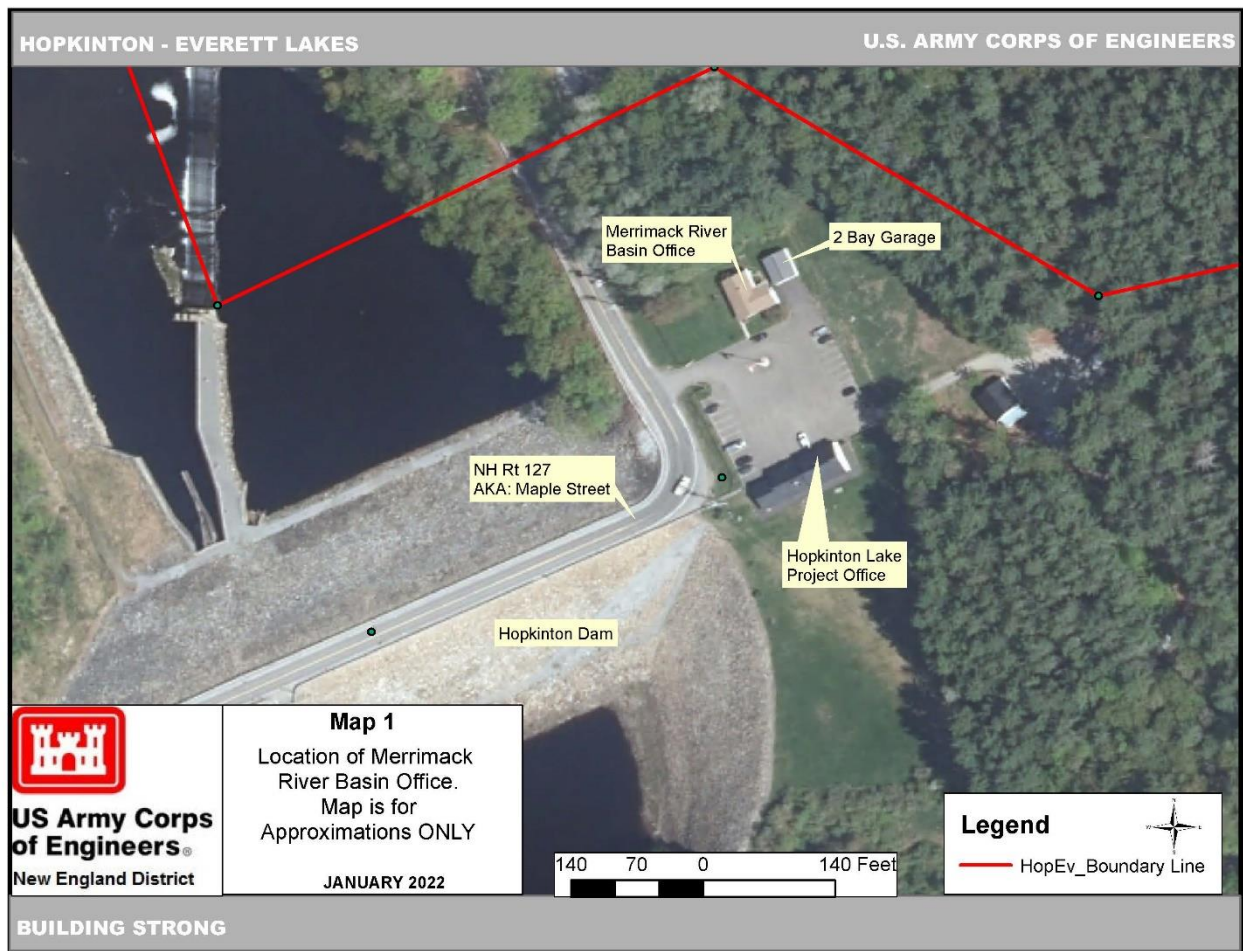


**Basin Office Remodel  
U.S. ARMY CORPS OF ENGINEERS  
MERRIMACK RIVER BASIN OFFICE**

**Contoocook, NH  
Statement of Work  
February 2022**

**Informational Map**



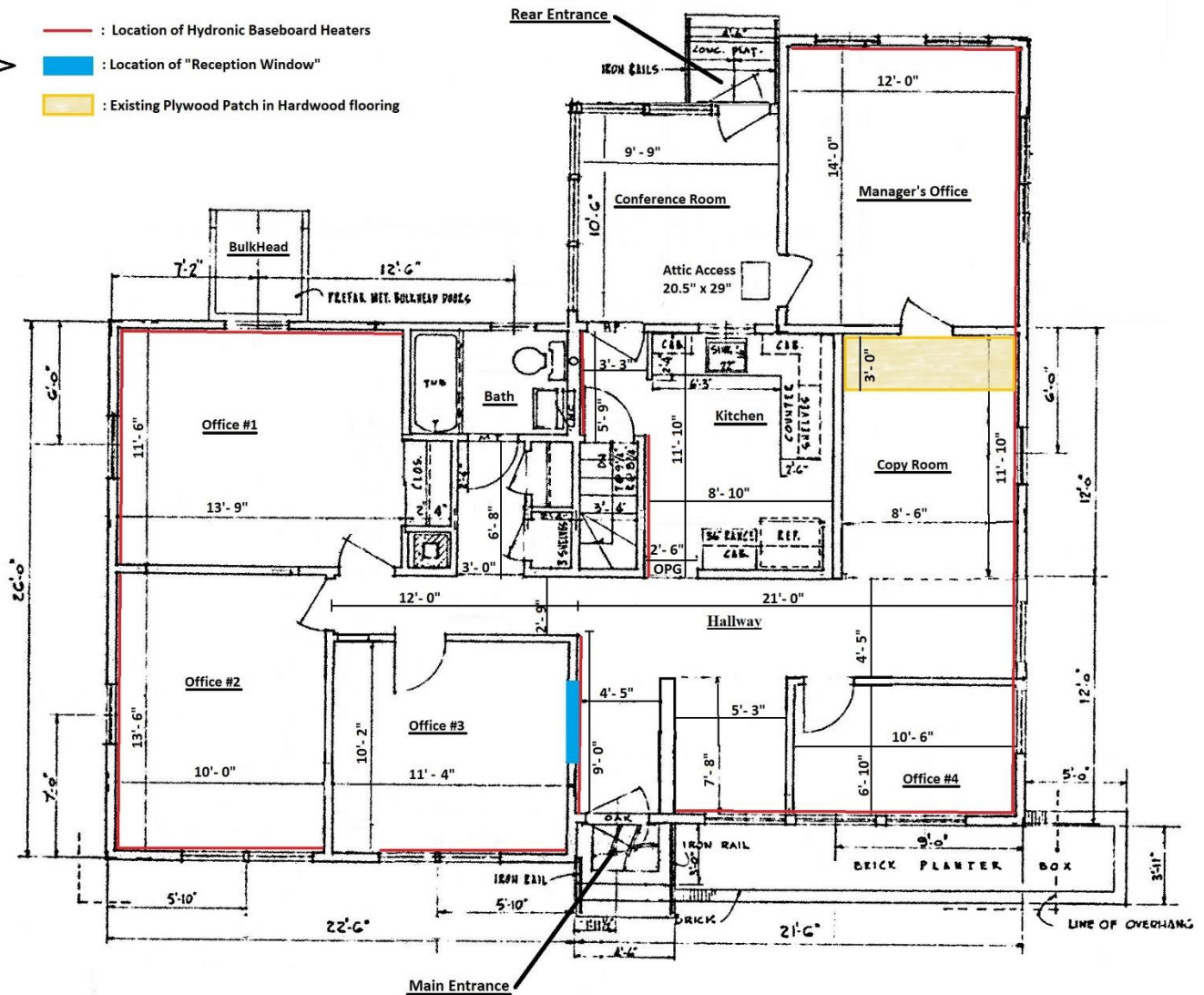
**Exhibit A:** Location Map

**Basin Office Remodel**  
**U.S. ARMY CORPS OF ENGINEERS**  
**MERRIMACK RIVER BASIN OFFICE**  
**Contoocook, NH**  
**Statement of Work**  
**February 2022**

**First Floor Plan: Not Shown to Scale**



- : Location of Hydronic Baseboard Heaters
- : Location of "Reception Window"
- : Existing Plywood Patch in Hardwood flooring



**Informational Plans**

**Exhibit B: Merrimack River Basin Office Floor Plan**

**Basin Office Remodel  
U.S. ARMY CORPS OF ENGINEERS  
MERRIMACK RIVER BASIN OFFICE  
Contoocook, NH  
Statement of Work  
February 2022**

**Informational Photos**



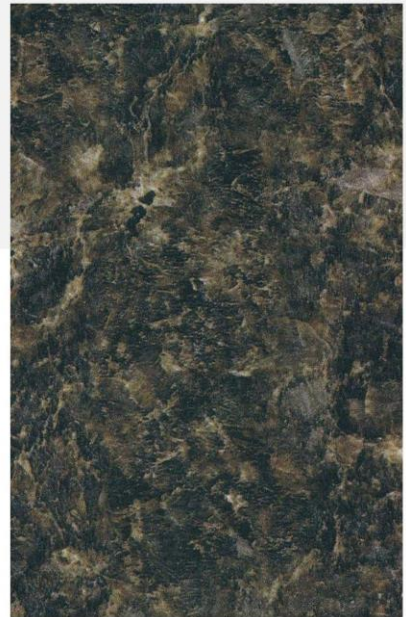
**Specification**

**Cabinets:**

Thomasville Studio 1904  
Naomi Maple Door Style in Natural Finish  
Soft Close Drawer Guides & Hinges  
Dove Tail Drawer Boxes  
Standard Construction with Plywood Ends on  
the Exposed Sides, ½" Partial Overlay

**Counters:**

Formica Postform Laminate  
Color: Labrador Granite 3692-58

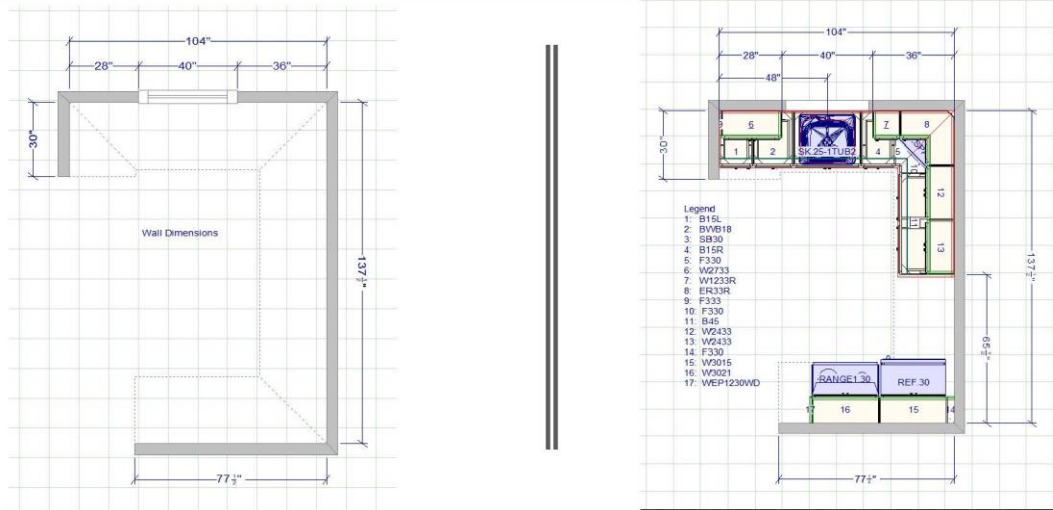


**Exhibit C: Cabinet and Countertop Specifications**

**Basin Office Remodel**  
**U.S. ARMY CORPS OF ENGINEERS**  
**MERRIMACK RIVER BASIN OFFICE**  
**Contoocook, NH**  
**Statement of Work**  
**February 2022**

**Informational Plans**

Wall Dimensions and Floor Plan  
Need to confirm Window Width and Location on Wall



**Exhibit D: Kitchen Floor Plan and Cabinet Layout**

**Basin Office Remodel  
U.S. ARMY CORPS OF ENGINEERS  
MERRIMACK RIVER BASIN OFFICE  
Contoocook, NH  
Statement of Work  
February 2022  
  
Informational Photos**



View from Inside Office #3.

View from Main Entryway.

**Exhibit E:** Reception-Style Wall Opening

**Basin Office Remodel  
U.S. ARMY CORPS OF ENGINEERS  
MERRIMACK RIVER BASIN OFFICE  
Contoocook, NH  
Statement of Work  
February 2022**

**Informational Photos**



**Exhibit F:** Typical Baseboard (9" high x 3" deep) with quarter round top accent trim

**Basin Office Remodel  
U.S. ARMY CORPS OF ENGINEERS  
MERRIMACK RIVER BASIN OFFICE  
Contoocook, NH  
Statement of Work  
February 2022**

**Informational Photos**



**Exhibit**  
Typical

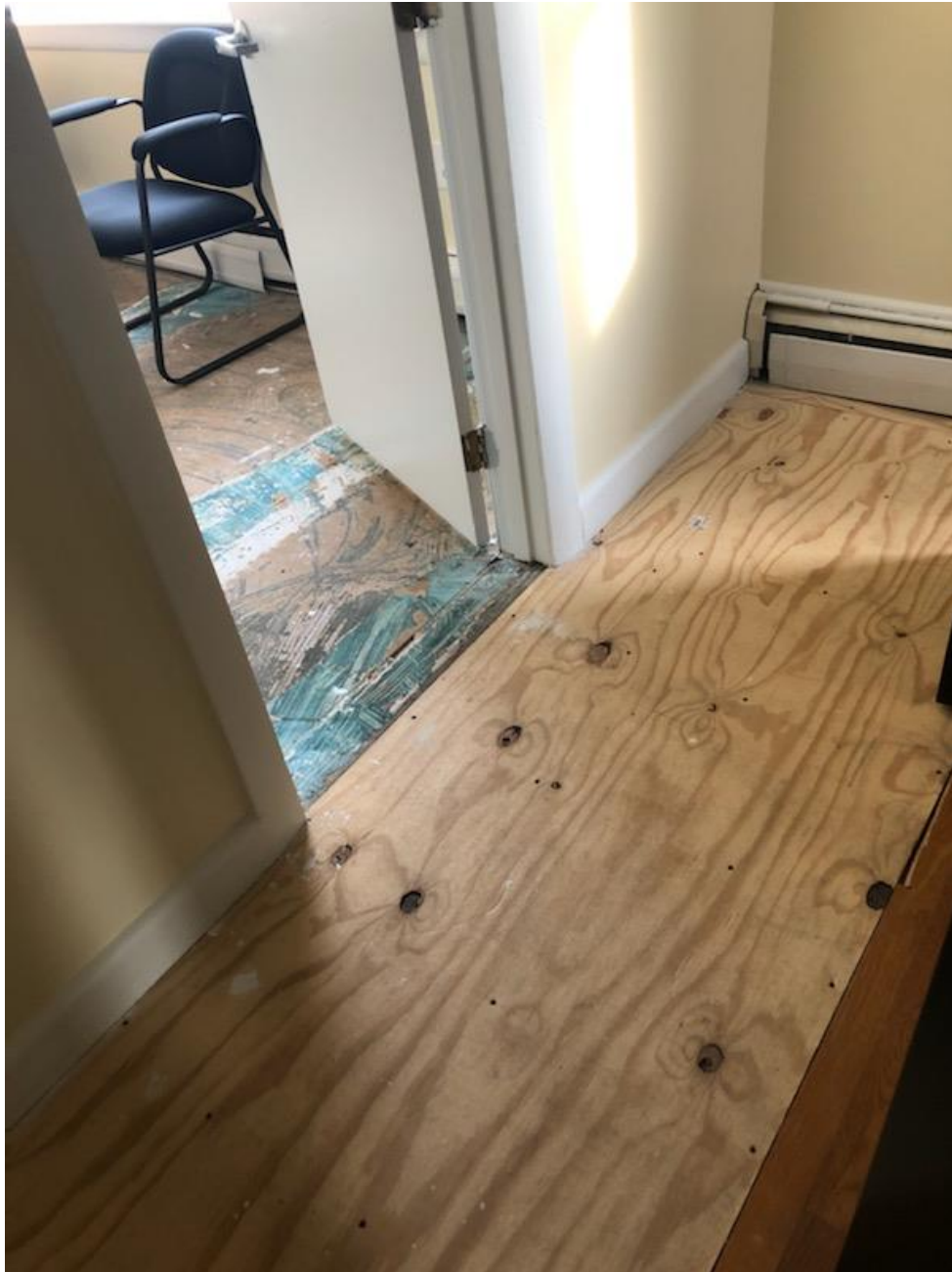
**G:**

Condition of Hardwood Flooring

**Basin Office Remodel  
U.S. ARMY CORPS OF ENGINEERS  
MERRIMACK RIVER BASIN OFFICE  
Contoocook, NH  
Statement of Work  
February 2022**

**Informational Photos**

**Exhibit**  
6" by 3'  
of



**H: 8'-**  
Section

Hardwood Flooring with Temporary  
Plywood Insert

**Basin Office Remodel  
U.S. ARMY CORPS OF ENGINEERS  
MERRIMACK RIVER BASIN OFFICE  
Contoocook, NH  
Statement of Work  
February 2022**



**Informational Photos**

**Exhibit I:** Office #4 Trim and carpet remnants under existing trim

**Basin Office Remodel  
U.S. ARMY CORPS OF ENGINEERS  
MERRIMACK RIVER BASIN OFFICE  
Contoocook, NH  
Statement of Work  
February 2022**

**Informational Photos**



**Exhibit**  
Typical

**J:**

Condition of Subflooring and trim in Manager's Office

**Basin Office Remodel  
U.S. ARMY CORPS OF ENGINEERS  
MERRIMACK RIVER BASIN OFFICE  
Contoocook, NH  
Statement of Work**



**February 2022**

**Informational Photos**

**Exhibit K:** Current layout and condition of the Kitchen area

**Basin Office Remodel  
U.S. ARMY CORPS OF ENGINEERS  
MERRIMACK RIVER BASIN OFFICE  
Contoocook, NH  
Statement of Work  
February 2022**

**Informational Photos**





**Exhibit L:** Existing kitchen sink with water filter faucet (circled in red) to be saved and re-installed in a similar position on the new sink. Also shown is the supply line from the filter system to the filter faucet (red arrow)