


 USACE East Brimfield Dam Project Area

 SECTION 2: +/- 9.89 miles

 SECTION 3 (OPTION): +/- 10.94 miles



BOUNDARY MAINTENANCE MAP #1

2021 BOUNDARY MAINTENANCE

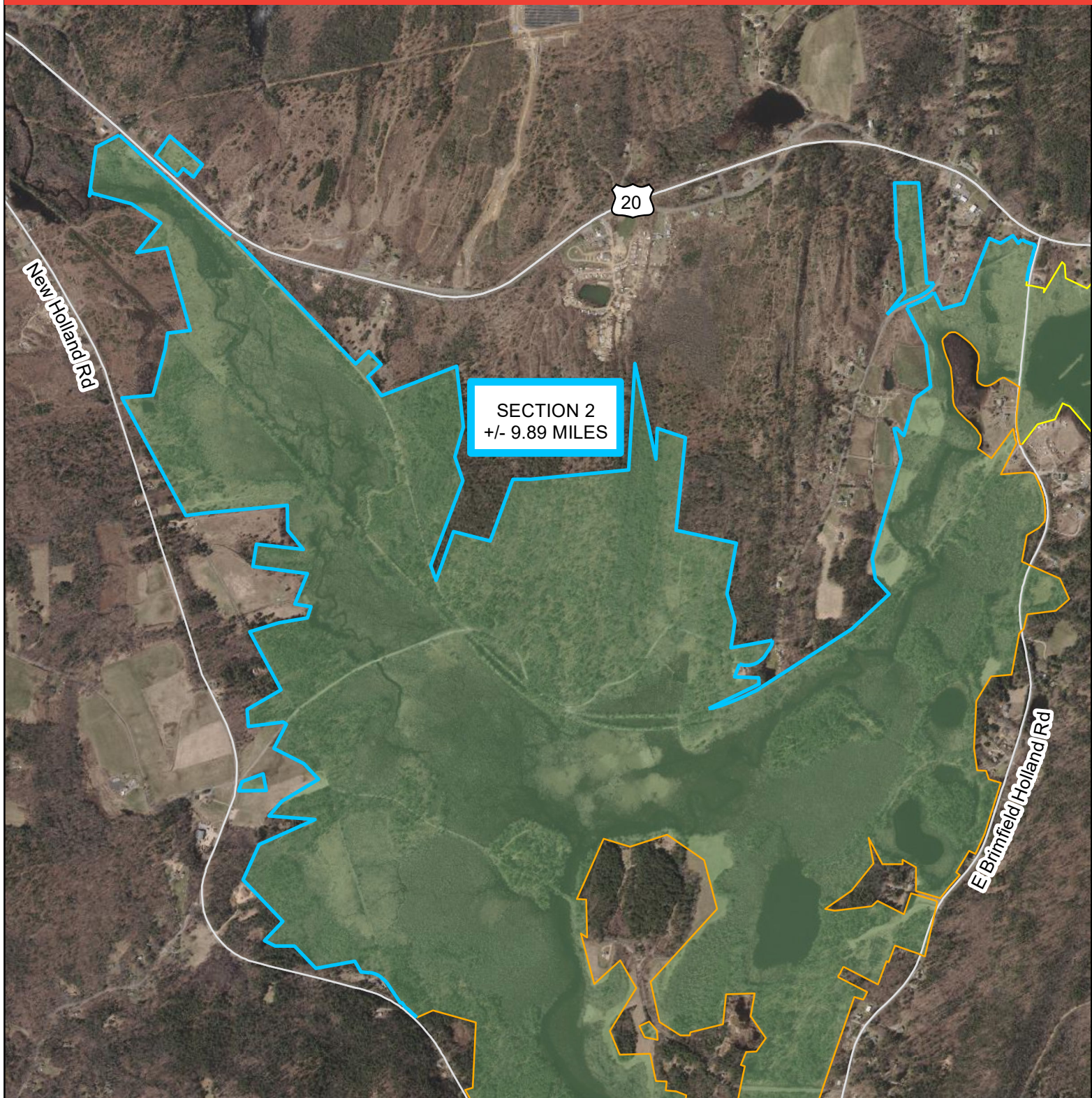
EAST BRIMFIELD DAM


US ARMY CORPS OF ENGINEERS  
NEW ENGLAND DISTRICT

AUG 2021





**SECTION 2**

 USACE Boundary to be Marked +/- 9.89 miles

 USACE East Brimfield Dam Project Area



BOUNDARY MAINTENANCE MAP #2

2021 BOUNDARY MAINTENANCE

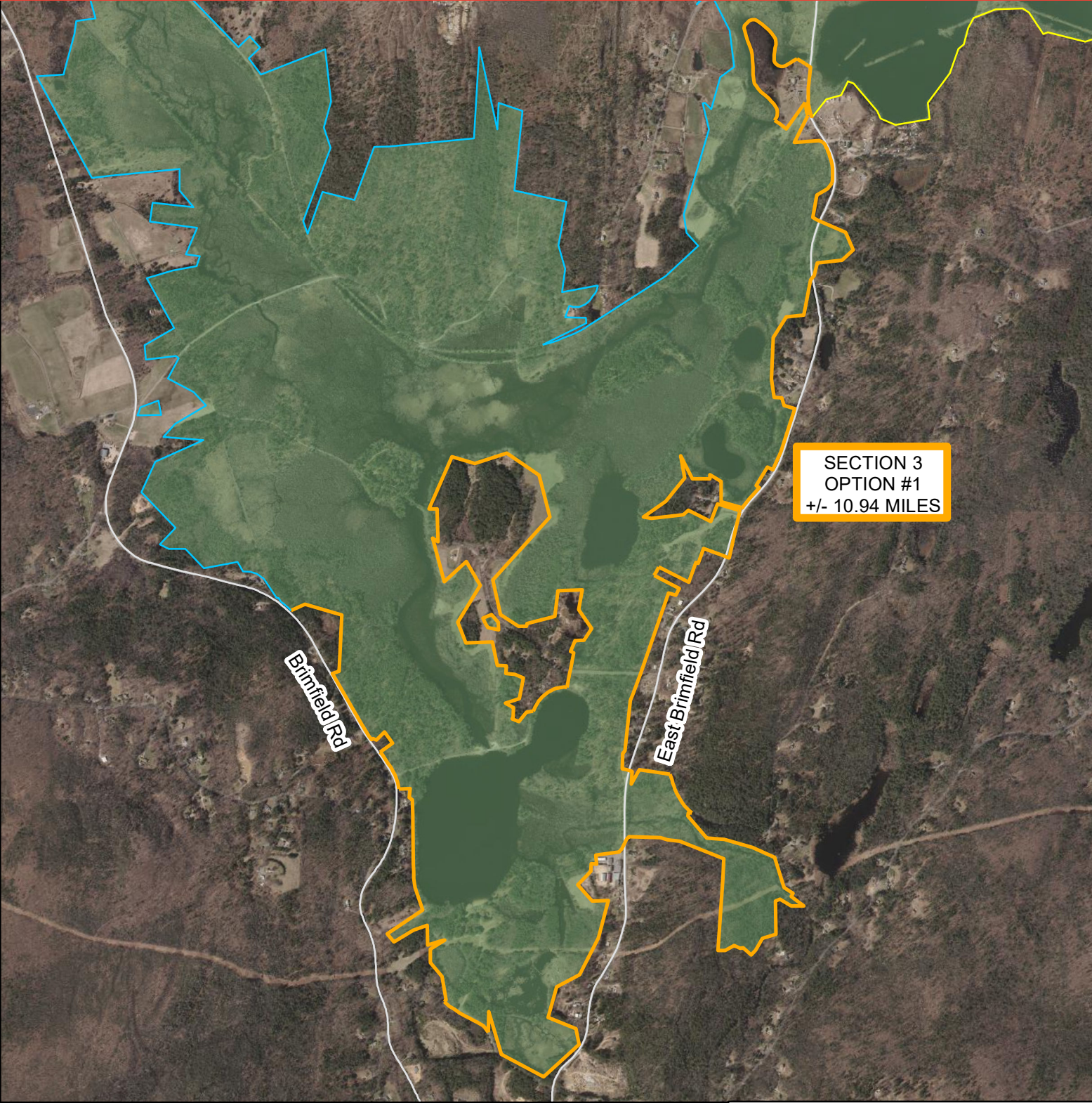
EAST BRIMFIELD DAM

US ARMY CORPS OF ENGINEERS  
NEW ENGLAND DISTRICT



AUG 2021







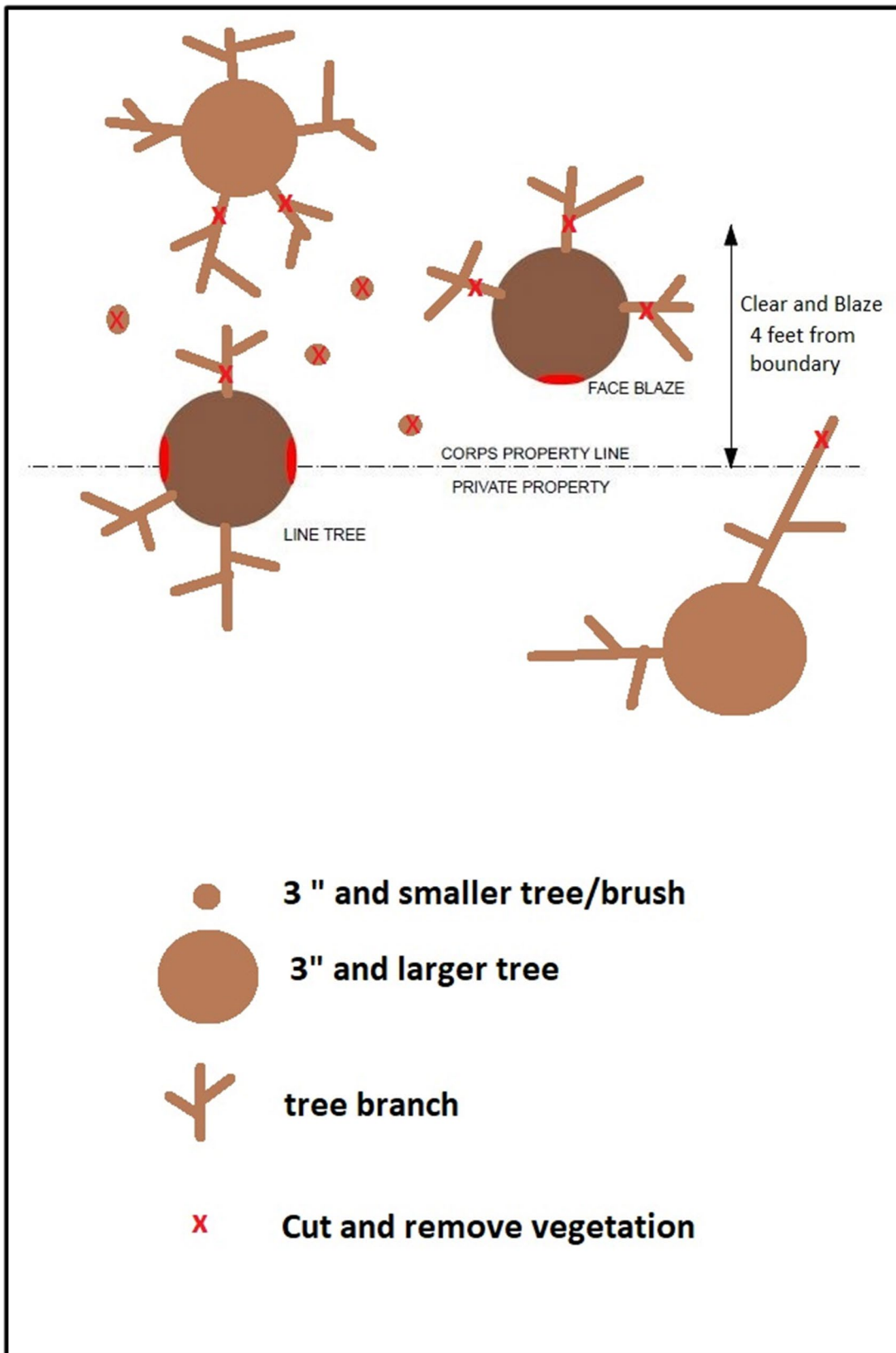
**OPTION #1 - SECTION 3**

-  SECTION 3 (OPTION): +/- 10.94 miles
-  USACE East Brimfield Dam Project Area



BOUNDARY MAINTENANCE MAP #3
2021 BOUNDARY MAINTENANCE
EAST BRIMFIELD DAM
US ARMY CORPS OF ENGINEERS NEW ENGLAND DISTRICT
AUG 2021





**FIGURE NO 1: Boundary Clearing Specifications**



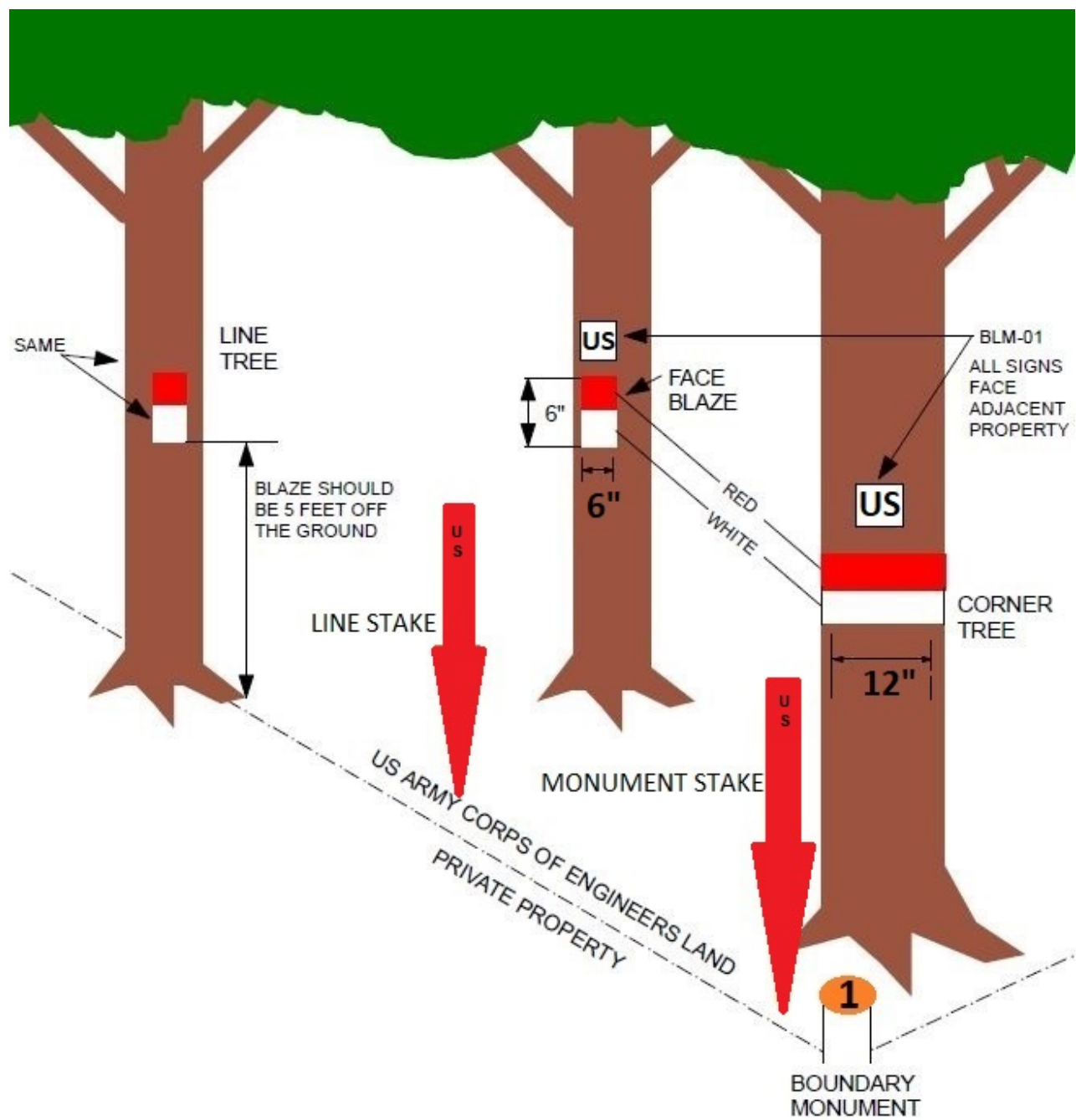


FIGURE NO 2: Boundary Marking Specifications