

**ANNUAL CRANE AND GATE OPERATOR INSPECTION
U.S. ARMY CORPS OF ENGINEERS
FRANKLIN FALLS DAM
FRANKLIN, NEW HAMPSHIRE
Performance Work Statement**

Informational Photos



Exhibit A: Franklin Falls Dam Gatehouse Service Bridge.

**ANNUAL CRANE AND GATE OPERATOR INSPECTION
U.S. ARMY CORPS OF ENGINEERS
FRANKLIN FALLS DAM
FRANKLIN, NEW HAMPSHIRE
Performance Work Statement**

Informational Photos



Exhibit B: Operating Floor Access Hatch to Gate Well and Inspection Gallery where lower sheaves and gate is located.

ANNUAL CRANE AND GATE OPERATOR INSPECTION
U.S. ARMY CORPS OF ENGINEERS
FRANKLIN FALLS DAM
FRANKLIN, NEW HAMPSHIRE
Performance Work Statement

Informational Plans

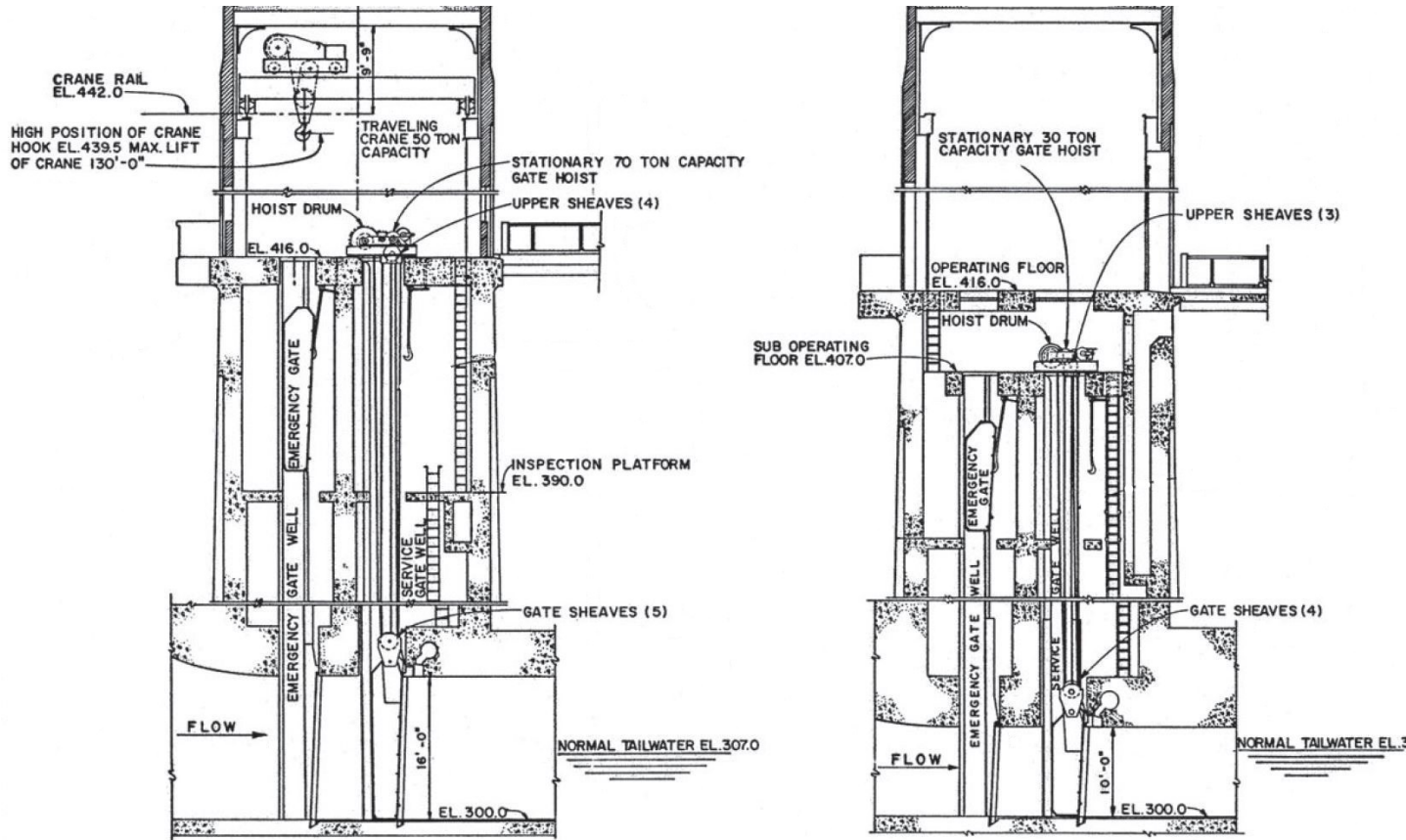


Exhibit C: As Built Drawing [Not to Scale]. General Plan of the Franklin Falls Dam Gatehouse Tower at work areas.

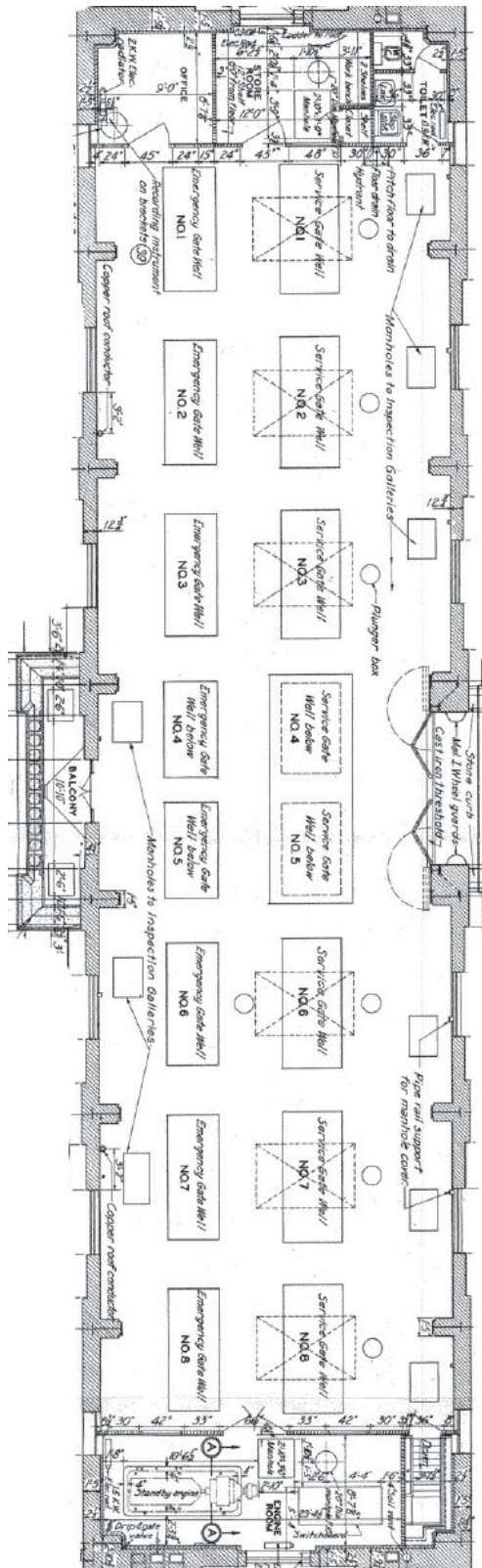


Exhibit D: As Built Drawing [Not to Scale]. Operating Floor plan and layout.