

FIGURE 3

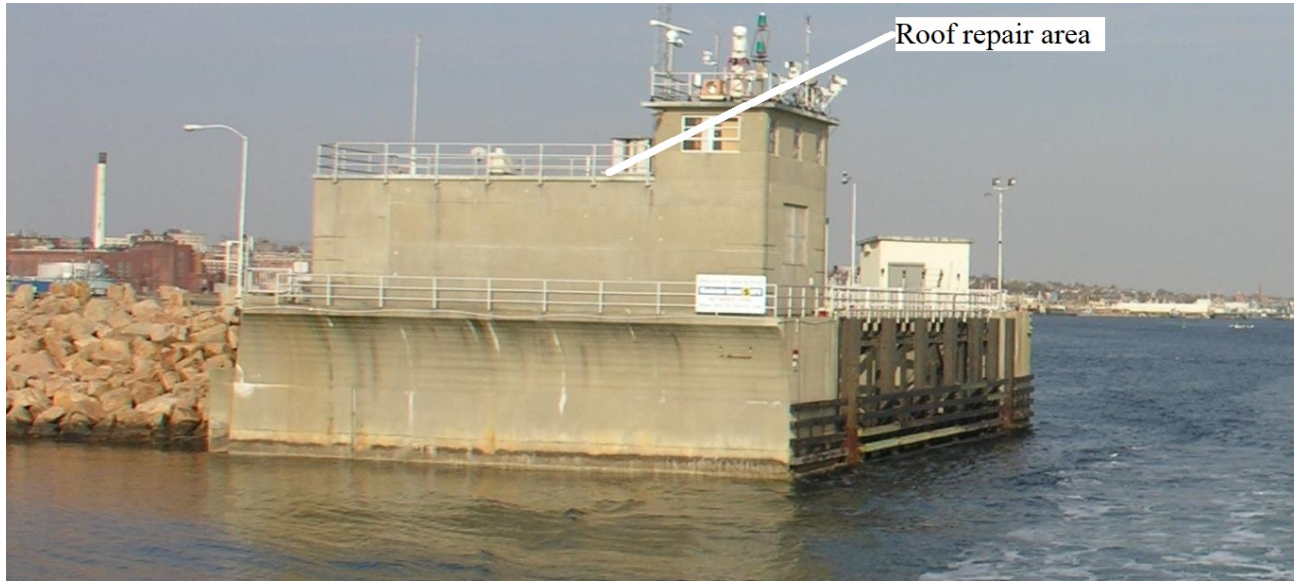


Figure 3 shows area of roof repair on Operating House #1, looking north.

FIGURE 4

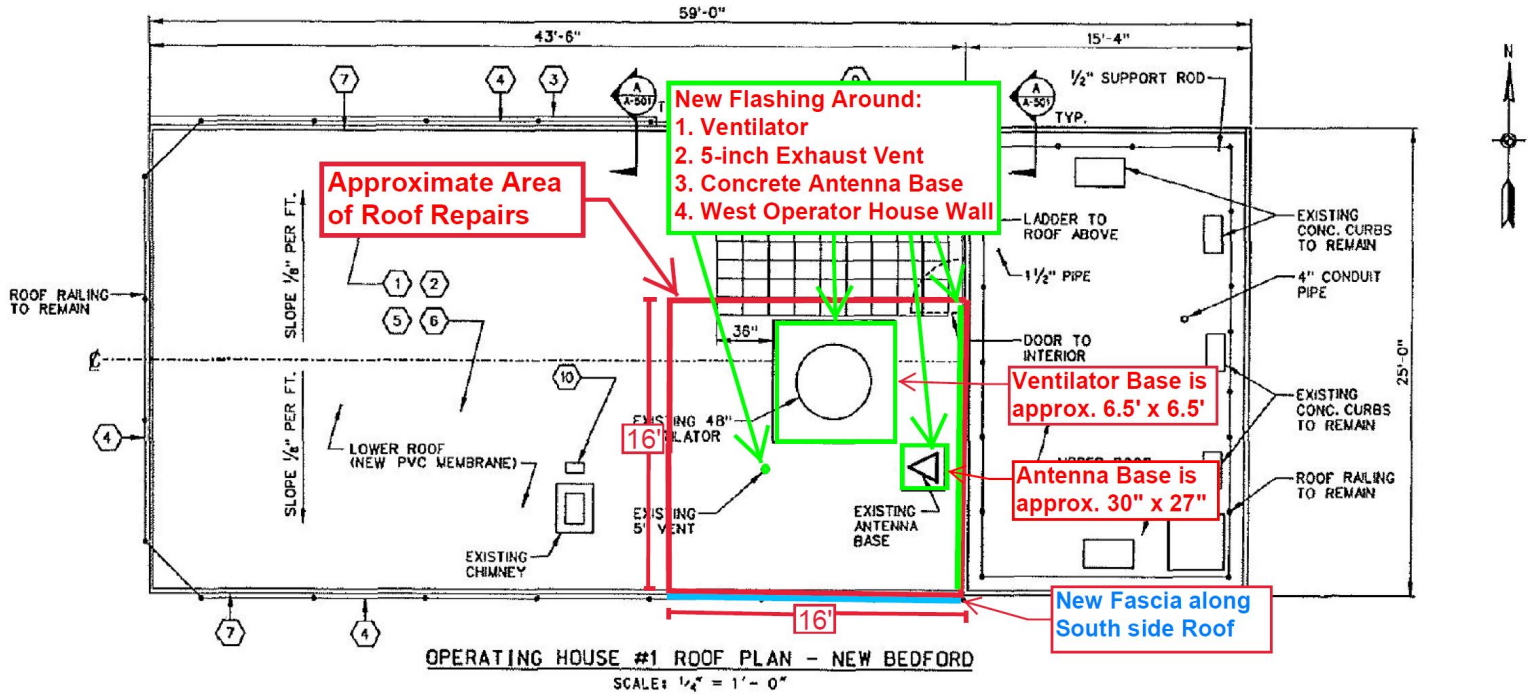


Figure 4 shows plan view of roof repair area.

FIGURE 5

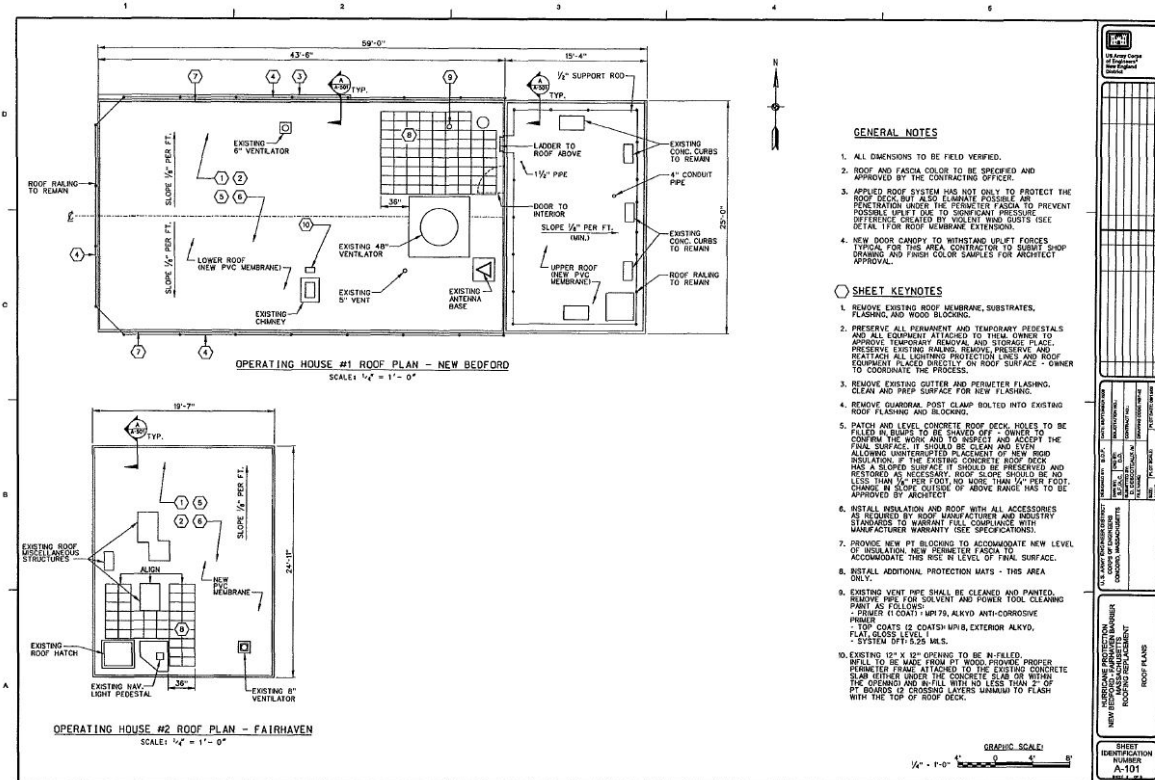


Figure 5 shows reference Drawing 1 for existing roof installed in 2010.

FIGURE 6

FIGURE 8

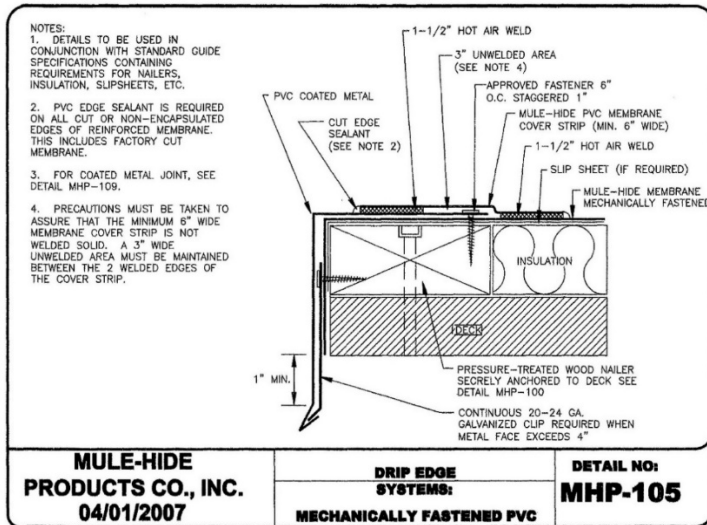


Figure 8 shows reference Drawing 4 for existing roof installed in 2010.

FIGURE 9

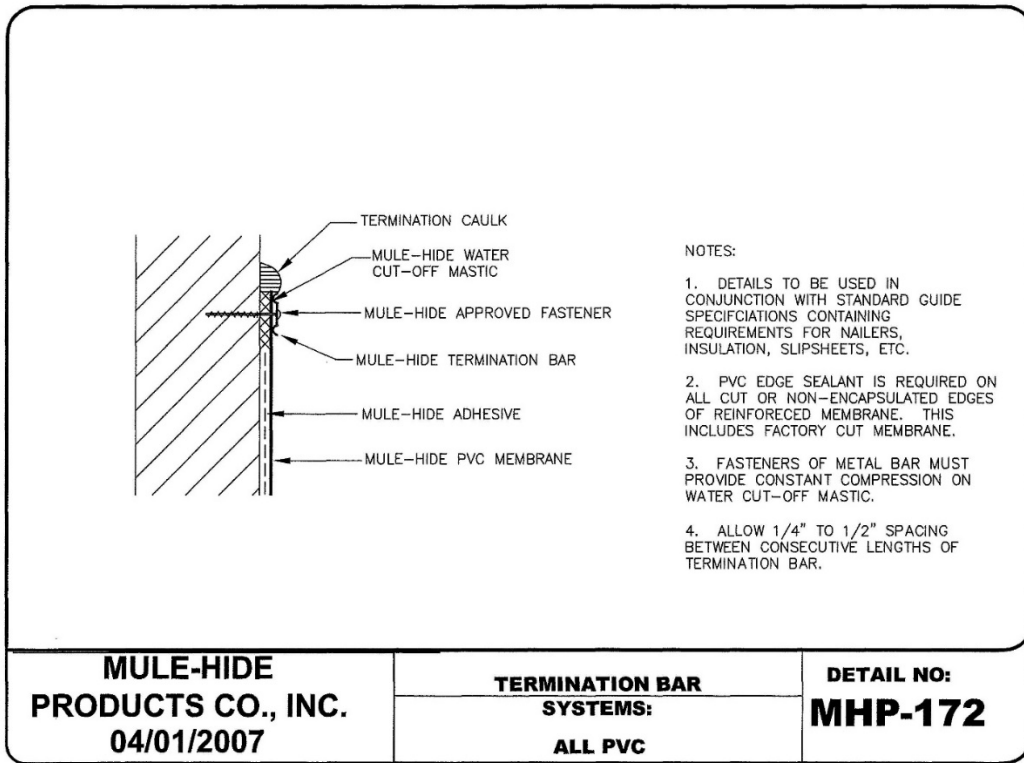
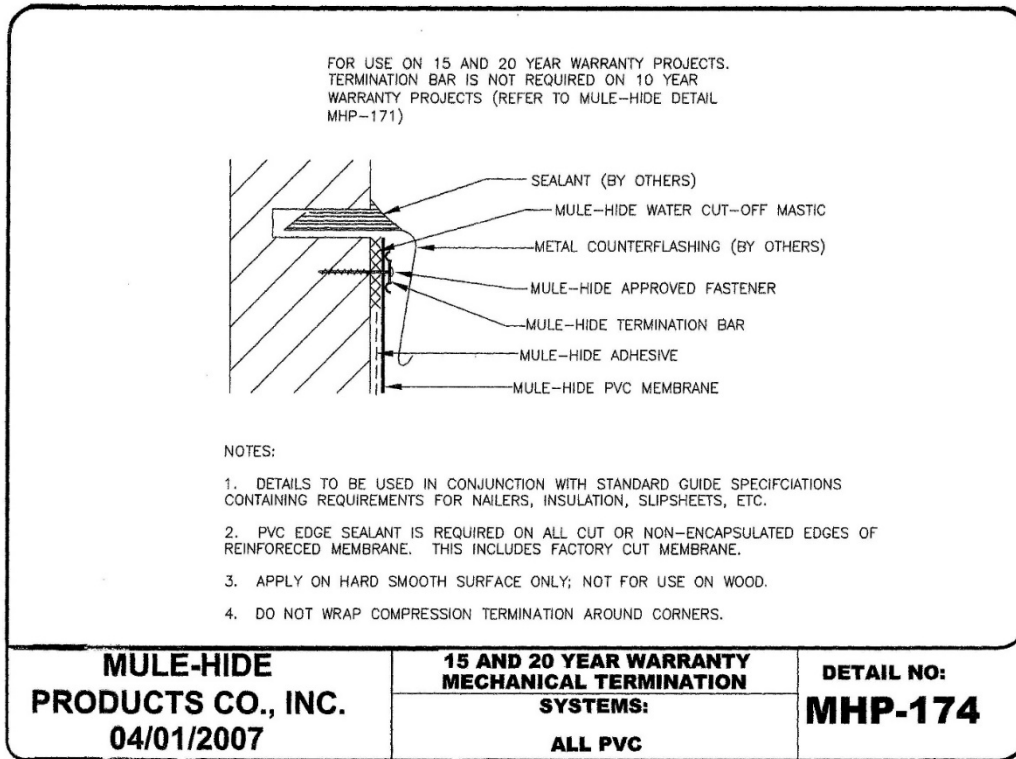


Figure 9 shows reference Drawing 5 for existing roof installed in 2010.

FIGURE 10



**Figure 10 shows reference Drawing 6 for existing roof installed in 2010.
Informational Photos**



Photo 1: Shows damaged roof and insulation after a winter storm caused an antennae to fall.



Photo 2: Shows damaged roof and insulation after a winter storm caused an antennae to fall.



Photo 3: View of damaged PVC membrane adjacent to 5-inch exhaust vent and ventilator.



Photo 4: Shows temporary patch materials with existing PVC membrane, looking south.



Photo 5: Shows temporary patch materials with existing PVC membrane, looking east.



Photo 6: Shows temporary patch materials with existing PVC membrane, looking east.