

**MECHANICAL VEGETATION REMOVAL
U.S. ARMY CORPS OF ENGINEERS
FRANKLIN FALLS DAM
FRANKLIN, NEW HAMPSHIRE
Performance Work Statement**

Informational Photos

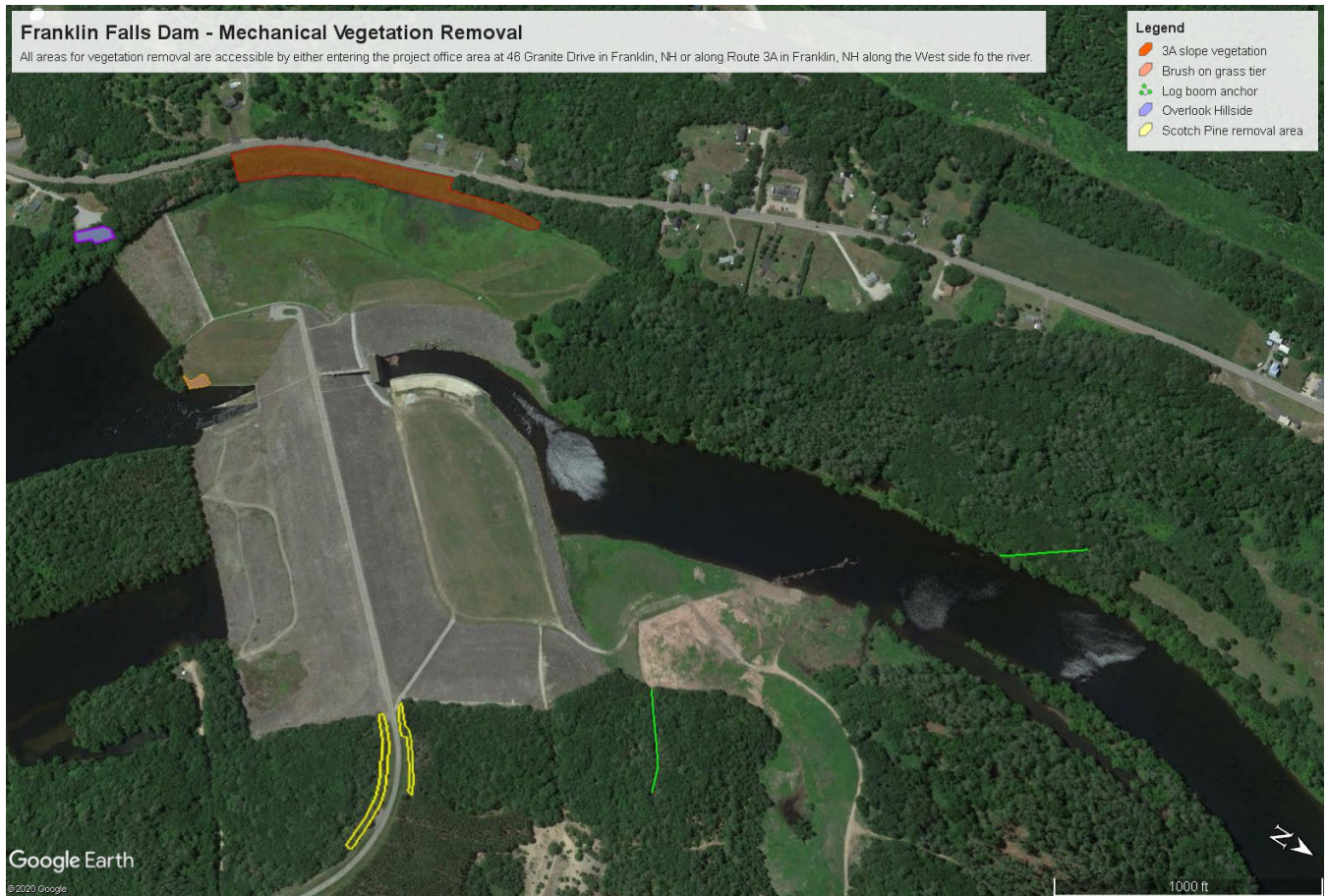


Exhibit A: Location Map

**MECHANICAL VEGETATION REMOVAL
U.S. ARMY CORPS OF ENGINEERS
FRANKLIN FALLS DAM
FRANKLIN, NEW HAMPSHIRE
Performance Work Statement**

Informational Photos

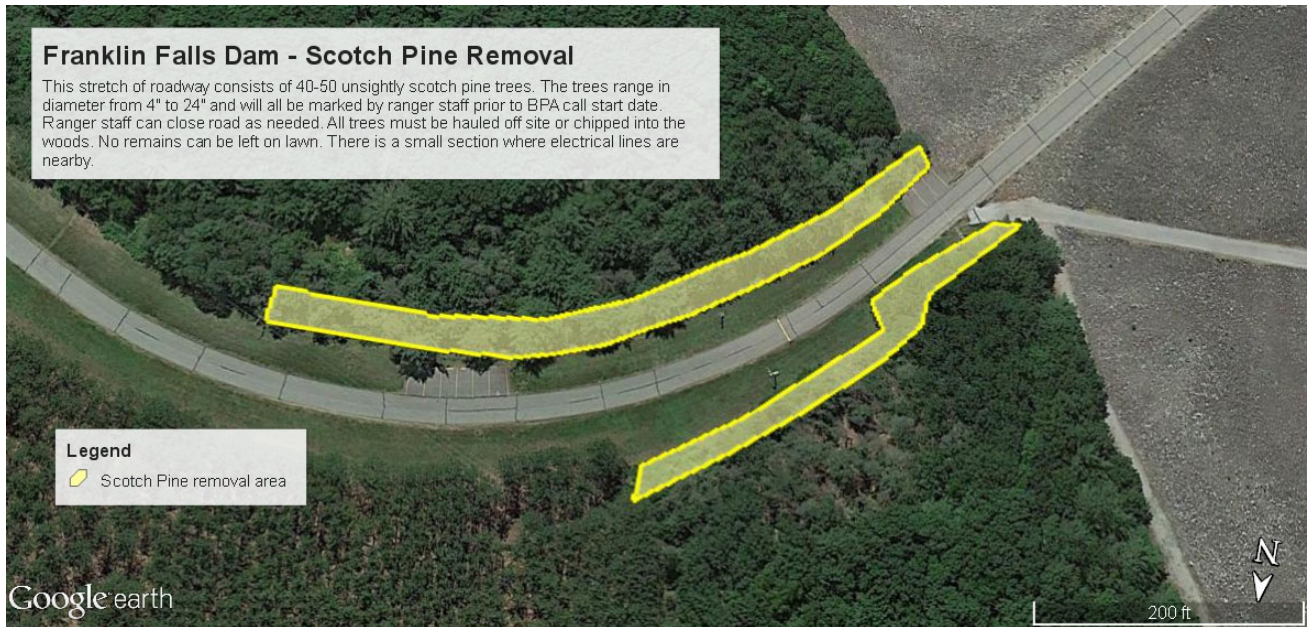


Exhibit B: Scotch Pines trees to be removed along Dam Access Road.

**MECHANICAL VEGETATION REMOVAL
U.S. ARMY CORPS OF ENGINEERS
FRANKLIN FALLS DAM
FRANKLIN, NEW HAMPSHIRE
Performance Work Statement**

Informational Photos



Exhibit C: Vegetation removal on rip-rap slope along Route 3A.

**MECHANICAL VEGETATION REMOVAL
U.S. ARMY CORPS OF ENGINEERS
FRANKLIN FALLS DAM
FRANKLIN, NEW HAMPSHIRE
Performance Work Statement**

Informational Photos



Exhibit D: Vegetation removal on third tier of Franklin Falls Dam.

**MECHANICAL VEGETATION REMOVAL
U.S. ARMY CORPS OF ENGINEERS
FRANKLIN FALLS DAM
FRANKLIN, NEW HAMPSHIRE
Performance Work Statement**

Informational Photos



Exhibit E: Vegetation removal at Ledgeview Overlook hillside.

**MECHANICAL VEGETATION REMOVAL
U.S. ARMY CORPS OF ENGINEERS
FRANKLIN FALLS DAM
FRANKLIN, NEW HAMPSHIRE
Performance Work Statement**

Informational Photos



Exhibit F: Vegetation removal along log boom anchors.