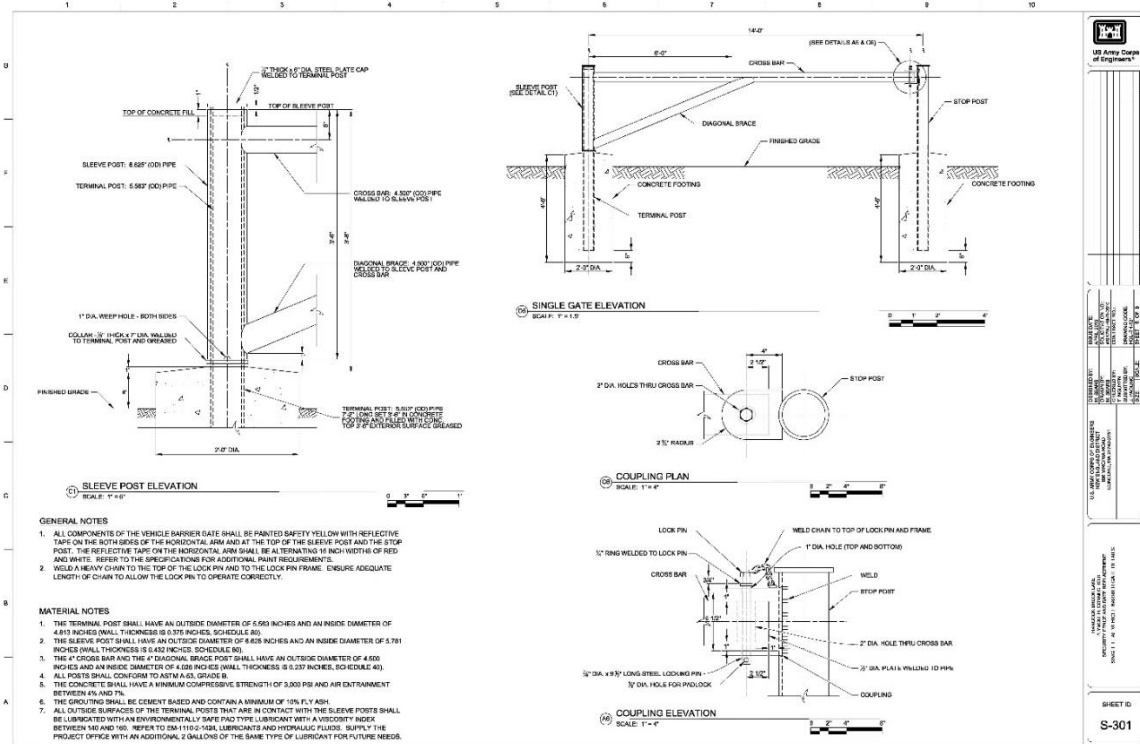
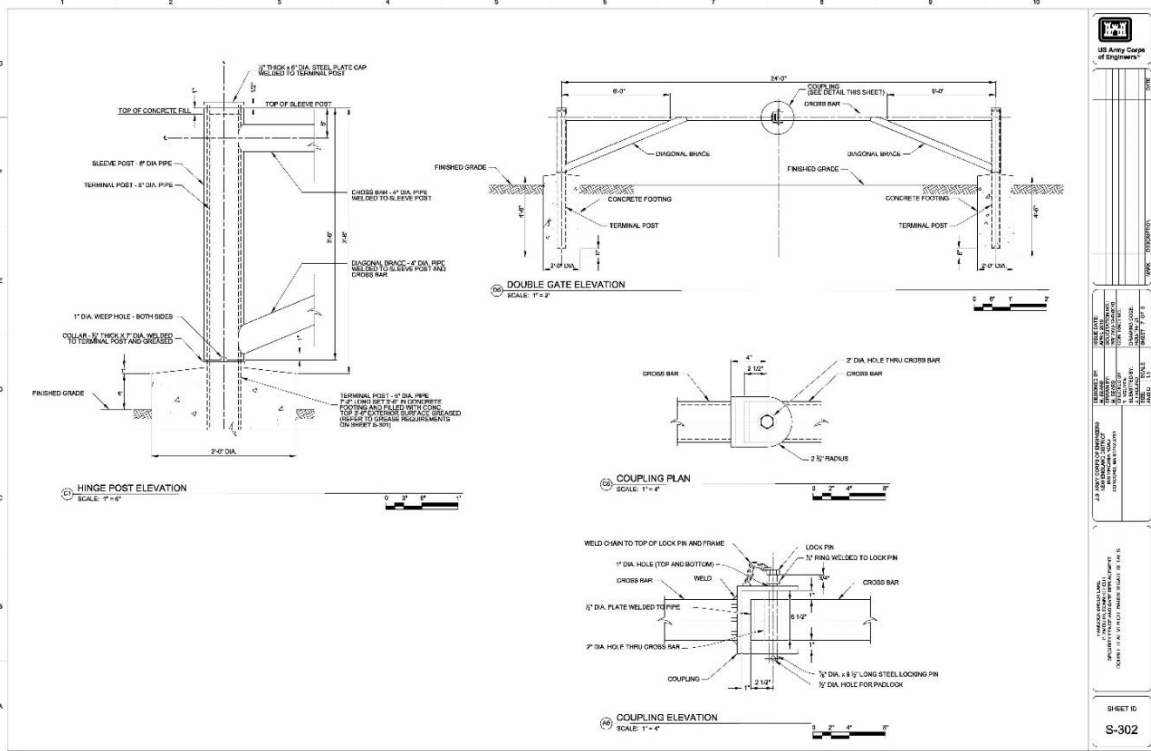


**BLACK ROCK ACCESS GATES REPLACEMENT
U.S. ARMY CORPS OF ENGINEERS
BLACK ROCK DAM
THOMASTON, CT
STATEMENT OF WORK**



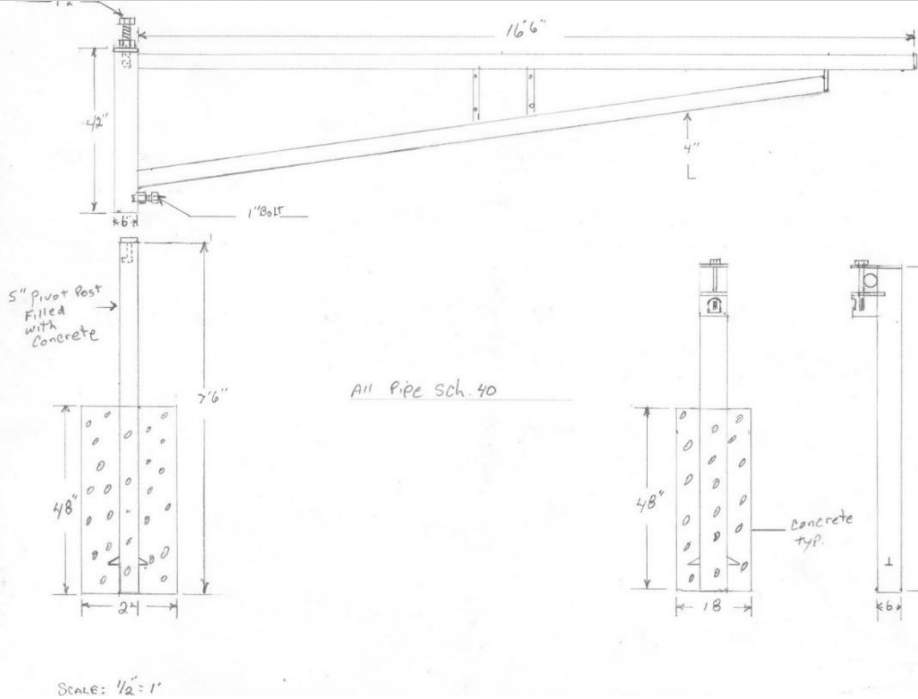
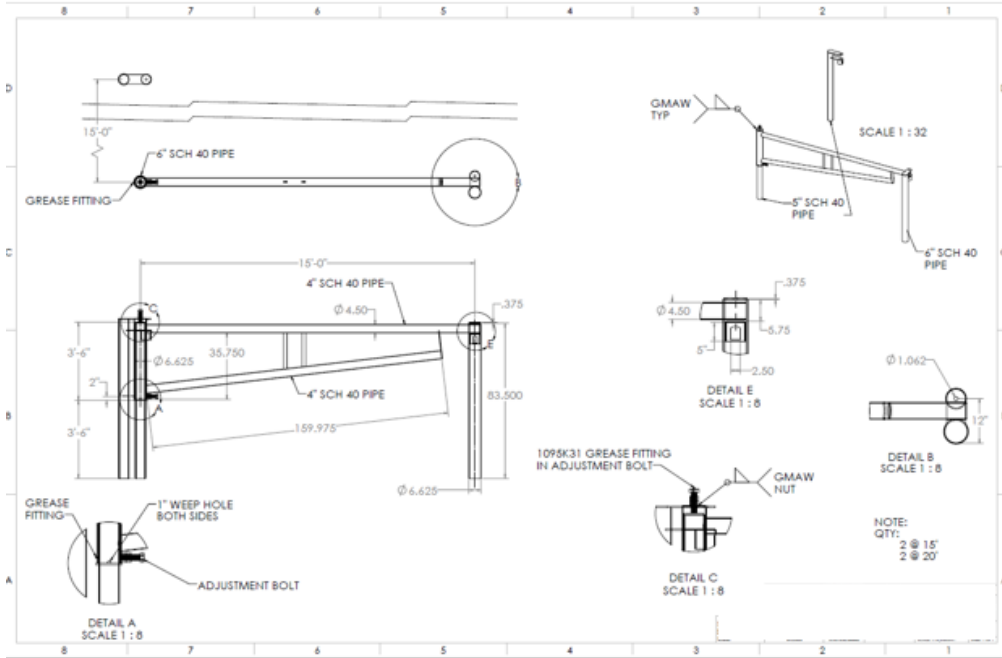
Informational Photo 1: Example of gate to be installed at Black Rock Outlet Access.

**BLACK ROCK ACCESS GATES REPLACEMENT
U.S. ARMY CORPS OF ENGINEERS
BLACK ROCK DAM
THOMASTON, CT
STATEMENT OF WORK**



Informational Photo 2: Example of gate to be installed at Black Rock Four Corners.

**BLACK ROCK ACCESS GATES REPLACEMENT
U.S. ARMY CORPS OF ENGINEERS
BLACK ROCK DAM
THOMASTON, CT
STATEMENT OF WORK**

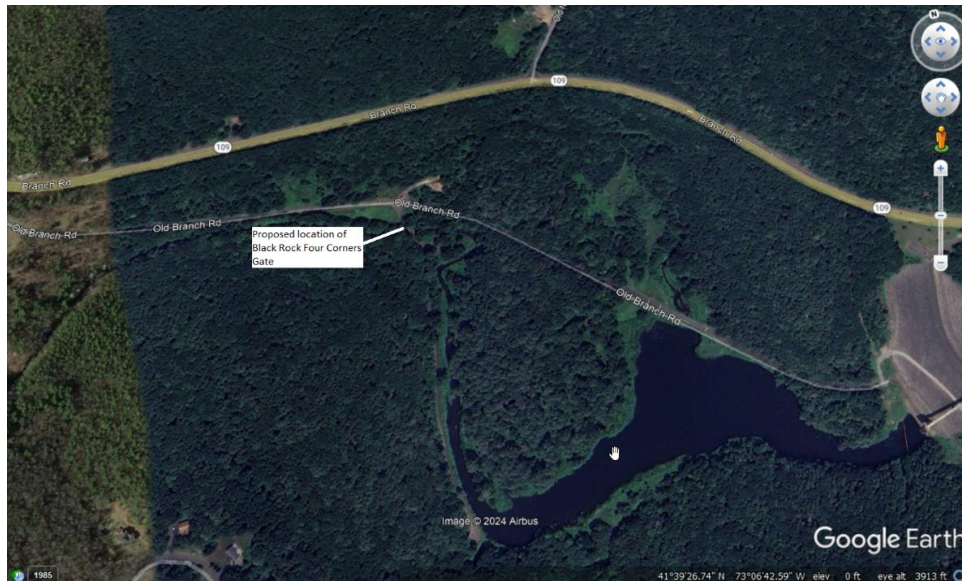


Informational Photo 3: Examples of gate showing detail of adjustment mechanism with 1” bolts.

**BLACK ROCK ACCESS GATES REPLACEMENT
U.S. ARMY CORPS OF ENGINEERS
BLACK ROCK DAM
THOMASTON, CT
STATEMENT OF WORK**



Informational Photo 4: Proposed location of Black Rock Four Corners Gate.



Informational Photo 5: Proposed location of Black Rock Four Corners Gate.

**BLACK ROCK ACCESS GATES REPLACEMENT
U.S. ARMY CORPS OF ENGINEERS
BLACK ROCK DAM
THOMASTON, CT
STATEMENT OF WORK**



Informational Photo 6: Existing Gate at Black Rock Dam Outlet.

**BLACK ROCK ACCESS GATES REPLACEMENT
U.S. ARMY CORPS OF ENGINEERS
BLACK ROCK DAM
THOMASTON, CT
STATEMENT OF WORK**



Informational Photo 7: Example of gate to be installed at Black Rock Four Corners.



Informational Photo 8: Example of gate to be installed at Black Rock Dam Outlet.