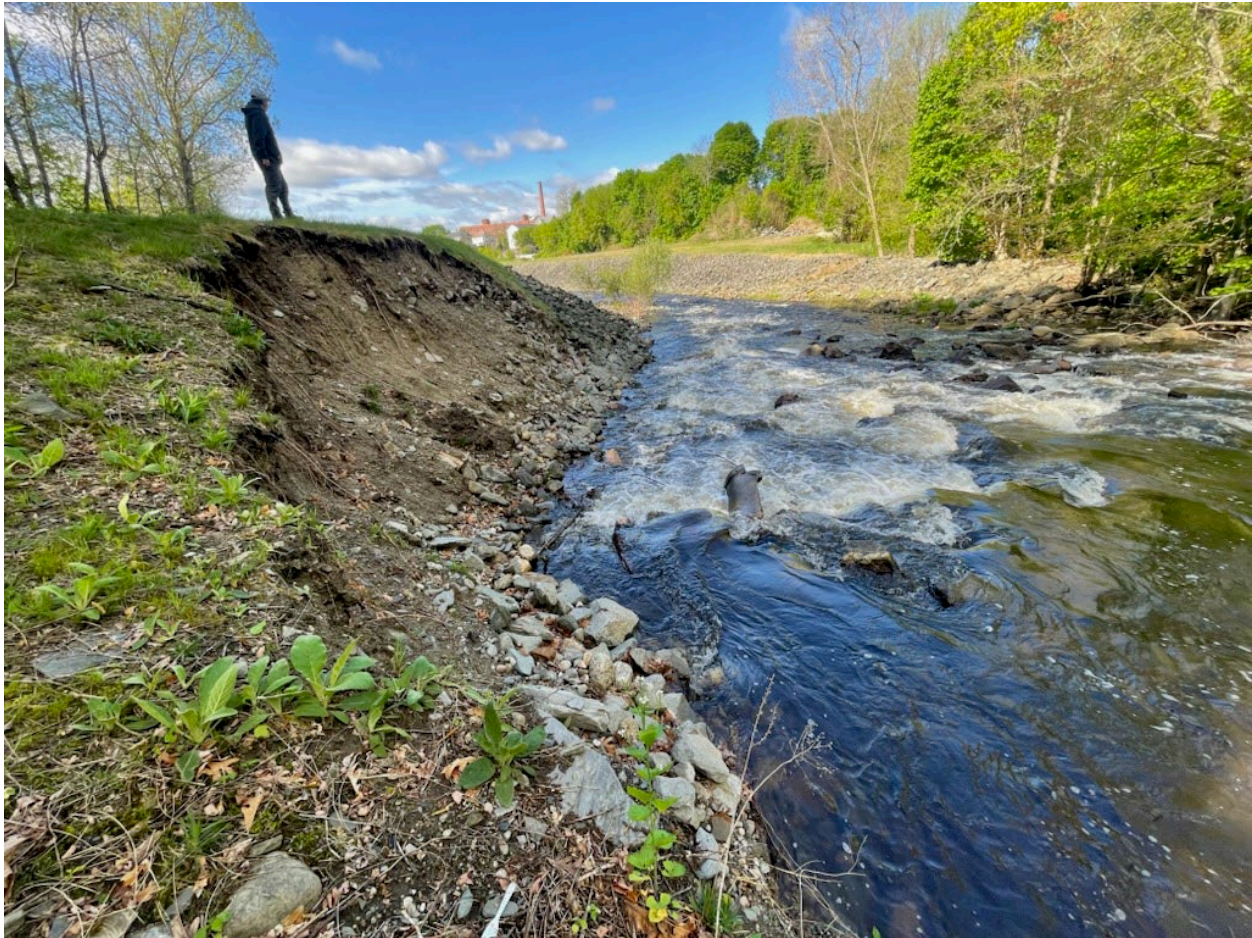
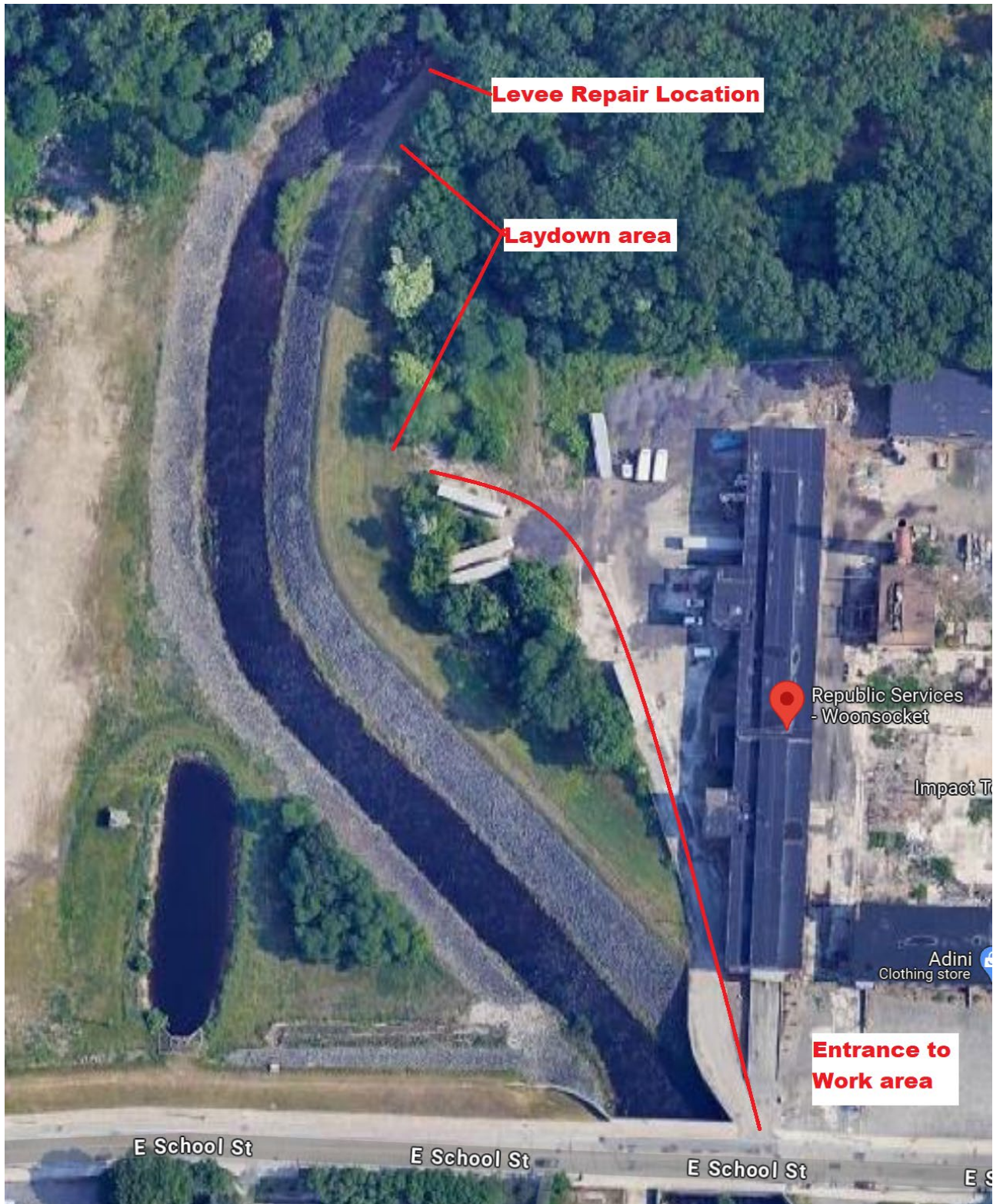


**MILL RIVER LEVEE REPAIR
U.S. ARMY CORPS OF ENGINEERS
WOONSOCKET FLOOD REDUCTION PROJECT
WOONSOCKET, RI
STATEMENT OF WORK
JULY 2024**

INFORMATIONAL PHOTOS AND PLANS



Informational Photo/Plan No. 1: Area of washout, Mill River left bank, looking downstream.



Informational Photo/Plan No. 3: Areal view of entrance, laydown and repair areas. Entrance address is 292 East School Street, Woonsocket, RI. 02895.

