



INSTALLATION



INSTRUCTIONS



Job Name: Barre Falls

Model #: 7860-02

Job #: 20002776

**After installation give this manual to the
playground owner.**

Installation questions? Call 1-800-255-0153

Thank you,

Kidstuff Playsystems, Inc.

Installation Instructions (In-ground Molded or Steel Deck Systems)

Table of Contents

Section 1

Where do I start (1 page) & General Instructions (4 pages)

Section 2

Plan View of Model

Multi-Elevation drawing

Decks

Clamps

Hardware

Roofs/Wave Shades

Section 3

Infill Locations

Infill Instructions

Spacer Instructions (Molded Decks only)

Section 4

Post Locations

Post Cap Installation

Surfacing Labels

Post Extensions

Footing Hole Layout

Footing Details

Section 5

Play Event Instructions

Section 6

Slide Exit Details

CNC Panel Notches

Wheel Assembly Detail

Section 7

Schedules



INSTALLATION NOTE

KIDSTUFF PLAYSYSTEMS, INC.

5400 MILLER, AVE., GARY, IN 46403
(800) 255-0153

Where do I start?

There isn't a right or wrong place to start on a structure. Generally you pick a deck module (one group of posts and decks) and assemble it without attaching the events. Make sure to start at the lowest end, because you have to put the lowest deck on first; then work your way up to the highest deck in the module. Many installers, after laying out the structure (see item #1 below--Space), will set one post in concrete and allow it to set up before going forward with the rest of the assembly. This gives the initial deck module much greater stability and does make everything easier. You can set a post the day before the installation starts, although quick-setting concrete products are available which will harden in about an hour.

When you have one module assembled, use the event which connects it to the next module to locate the posts for the next step. It's always better to have the first module in the ground--posts plumb, decks level, and concrete set--before doing the next module.

Some things to consider before starting:

1) Space

A. If you are setting a structure as close as you can to a fence, wall, or anything else, start at the point nearest this adjacent structure/obstacle, making sure that you allow adequate (typically a minimum 6'0") clearance for a properly-sized, impact-absorbing safety zone.

B. If you are working in a confined area and already know that you have little space beyond the required safety zone, lay out and stake the ground where the structure will go to confirm that it will fit. If you find that it will not fit (perhaps because some feature of the area was overlooked or mis-measured during the initial site assessment, or changes to the proposed design enlarged the required safety zone), there are many things that we can do to "tweak" the design and make it work--as long as you have not started putting concrete in the ground; but call Kidstuff Playgrounds immediately.

2) Experience

If this is your first structure you are probably better off starting with the smallest, lowest deck module in order to "get your feet wet."

3) Number of people installing

If you are working with a large crew, try starting in the middle. Then as you work along you can split people up, with teams going in different directions from the core. Your teams will work more efficiently when they are far enough apart that they stay out of each other's way.

4) Utilities

This can't be repeated too often. Be absolutely sure you are clear of all electric, gas, water, phone, or any other underground lines before you begin. Check with local utilities before digging anywhere.

Explosion, flood, or electrocution can really ruin your day.



INTRODUCTION

Congratulations on your purchase of exciting, new playground equipment by Kidstuff Playsystems. You have taken the first steps in providing your children with hours and hours of great fun and safe, healthy play.

At Kidstuff we have designed out equipment with a commitment to child development through a creative, social, and safe play experience. These installation instructions are an important part of our partnership in the assembly of your playstructure. Please look them over carefully and be sure your installer studies them as well.

We have organized the instructions to help you organize the job. Moving step-by-step through the instructions will assure that you have done a complete and thorough job, proceeding in a logical progression through all phases of installation. Instructions are organized as follows:

Section I: Inventory and Pre-installation

This section deals with equipment delivery and verification of receipt by using parts schedules. Safety zones are discussed.

Section II: Tools required

Section III: Layout and Safety Surfacing

Section outlines post location and excavation details. It also further develops safety zone considerations.

Section IV: General Instructions

Reviews major components and how to install them. Tips are provided from our own install crews which may make things faster and easier.
[Call and contribute your own, if you like.]

Section V: Clamps and Fasteners

Important information provided to assure that everything goes together right and stays together.

Section VI: Structure Assembly

Here are all the pictures and diagrams you're looking for. Don't peek ahead until you've done your homework and **studied** sections I-V.

Maintenance:

Detailed guide with schedules and instructions for inspecting the playground and keeping it safe and sturdy for many, many years. These are included in your general instruction package. If you can not find them call Kidstuff Playsystems.

IMPORTANT: Before doing anything else, make a copy of these instructions and save them permanently with the maintenance instructions and records. Record installer information -- particularly insurance information--immediately.

SECTION I Delivery and Pre-Installation

A. Delivery Verification

Make sure shipment is **complete and undamaged before you start the job!** Find packing list (its location will be indicated on the shipping pallet)*. Check contents of all crates, boxes, and pallets. Look for any signs of shipping damage or abuse. Verify that all items are on site and in **good condition**. Count your clamps.

Review instruction sheets for all events and familiarize yourself with the hardware required. Place everything back in boxes or crates until needed. Larger parts of both plastic and metal have inventory tags indicating the part number. Make sure that any part on the schedules with a part number has been accounted for. If you find anything confusing or unclear call Kidstuff Playsystems to get free help. **If we do not hear from you at this point you are accepting the equipment complete and intact.**

Note:

Because your first responsibility is to inventory the equipment, **you will be invoiced for all parts shipped after construction has started.**

B. Pre-installation Safety Tips

Check that no utilities lines are hidden below the playground area. Electrical or phone cables as well as gas lines should be identified and located or their presence ruled out. The owner should contact local authorities and advise them of location of the digging area. Be aware that current playground safety standards require a min. 6' safety zone around all typical equipment. This area must include an impact-absorbing material as a safety surface. Your footing diagram will dimension and locate the limits of this safety zone. **Make sure before you start that you have enough room to safely install this equipment.** See Section IIIB, next page.

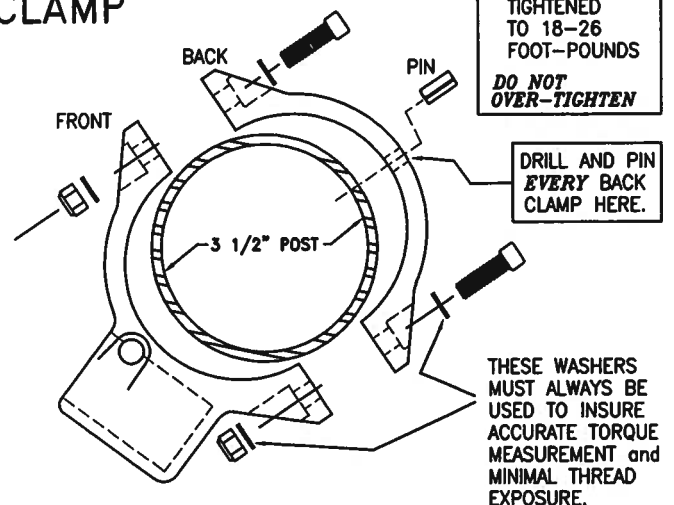
SECTION II Tool Requirements

To insure proper installation the checklist below list the *minimal* tools, equipment, that you may need:

- ___ Tape Measure (25' recommended; 100' is also useful for site lay-out)
- ___ Fine-tip black marker (you may need to make temporary marks on posts which can be easily removed.)
- ___ Level (at least 24"; 48" and torpedo levels are also helpful)
- ___ 3/8" drive socket set and ratchet. (A torque wrench is strongly recommended for inexperienced installers.)
- ___ 1/4", 5/32", 7/32", 3/16", 10mm allen wrenches (supplied—except for 10mm—but most installers prefer ratchet-drive allens)
- ___ Electric drill, extension cords, and bits (have 1/8, 3/16, 1/4 [for hardened steel—and have spares], 3/8, 7/16, 1/2).
- ___ Phillips head (#2 and #3) and flat blade screw drivers
- ___ Rubber mallet and claw hammer
- ___ Safety equipment: glasses, goggles, gloves, dust masks, etc.
- ___ Shovel and post hole digger
- ___ Wheel barrow and hoe (for mixing concrete and site clean-up)

Note that torque specifications are provided for clamps. While not commonly found in most toolboxes, a torque wrench should be rented or borrowed if you don't own or wish to purchase one. Clamps which are tightened with ratchet wrenches, breaker bars, or extensions slipped over the allen wrenches can far **exceed** the recommended torque, causing them to fail when they are drilled and pinned. Torque should be checked on clamps until installers have developed a consistent "feel" for the proper torque range. Thereafter, check torque randomly. If you are finding clamps tightened below or above 18-26 foot-pounds, go back, check, and correct. Note that **two washers must always be used on clamp bolts** to insure accurate torque reading and prevent safety violations from protruding threads. (You may put both washers under the bolt head, but you must use two.) **EVERY CLAMP MUST BE PINNED** as shown, right.

TYPICAL B/F CLAMP



* If you are unable to locate packing list or parts schedules, telephone Kidstuff Playsystems immediately at (800) 255-0153. Copies of these documents will be provided by email, phone or fax so you so that you can proceed properly.

SECTION III Post Hole Layout and Safety Surfacing

A. SITE CONSIDERATIONS

The playground site should be reasonably level and well drained.

Overhead obstructions (any object or structure that is not part of the play structure, such as tree limbs, shade structures not attached to the structure, building projections or ceilings, etc.) must be higher than 84" above any designated play surface or the use zone of the structure. Additionally, utility lines above playground use zones must comply with all local, state, and national codes.

B. FOOTING LAY OUT (POST LOCATIONS)

After determining the location of your equipment, you are ready to lay out the hole locations for posts and attachments. Installation is in-ground, combining stability and security.

Using the FOOTING LAYOUT or dimension sheet, confirm that your site has adequate clearance for the unit selected. On some occasions, this will require that the structure be orientated in a particular way in order to achieve proper free space around the unit. Measure out and mark footing distances. Dig post footings as required. If you elect to dig all the holes at one time, be aware that this can create two problems:

1) A shift of just a fraction of an inch in the beginning of the assembly can end up jamming up later posts against the side of existing holes. Try to avoid this condition. For optimum footing strength, a minimum of 2" of concrete should surround the post on all sides. Do your best to center the posts in the concrete, enlarging the footing holes, if necessary.

2) Holes all over the site create tripping hazards that can result in serious injuries of many kinds. Steps must be taken—usually covering holes with plywood—to prevent workers from stepping into holes. Failure to address this hazard, or just telling people to "be careful" or to "watch their step", will result in injuries.

C. SURFACING

To insure safety and to comply with current CPSC and ASTM standards, it is essential to provide a resilient, impact- absorbing safety surface to cushion falls. Discussion of proper materials and depths has been extensive in playground literature and is outside the scope of these instructions. Call Kidstuff Playsystems if information on this issue is required. Everyone involved in a playground project should understand that children are at risk on a playground which has no safety surface. Liability to owners and installers attends this risk.

D. FOOTING DEPTH

Post hole depth is determined by the safety surface chosen by the owner. Study the footing diagram. Typical footings are 30" deep overall, measured from the top of the safety surface (final grade). Concrete extends to the bottom of this footing. The bottom of the post extends 27" below final grade. Installers should be working on the subgrade—that is, the ground underneath the safety surface. Therefore, holes for the posts will not be dug 30" deep. Instead, the depth of the safety surface (typically 6"-12") is subtracted from the overall footing depth. IE: footing holes are a min. 18" deep when the surface depth is 12", with posts buried 15" in concrete.

NOTE: Unit requires at least 15" of concrete on all post footings. If safety surfaces are deeper than 12", footings should be extended more deeply adding additional concrete below post bottom. Where holes are less than 18" deep, consider increasing footing diameter to 18-24", especially in softer soils. Water should not puddle around the post—slope top of footing away from the post.

SECTION IV: General Instructions

A. POSTS

Locate and identify all posts. Using the post ID list on the drawing in the instruction packet, find your post locations and note the deck heights. Locate 3 1/2" post caps. Note which posts do not support a roof and gently drive caps into end of those posts with a rubber mallet. You may use a hammer if you place a 2x4 block on the cap to protect it—do not strike the caps with the block or the hammer.

B. DECK ASSEMBLY

Footing holes should be dug to proper depth (Section III-C above). Note that a concrete block or brick should be used at the footing base so that posts do not settle during or after assembly. This will also help keep decks level and structure square until footings are poured.

Installation tip: Start with the lowest decks in each deck/post module. Note that decks are supported by sleeves that slide over the posts. Put one sleeve on each post for each square or triangle deck it will be supporting before setting the post in the footing hole. (The narrow side of any Half Hex will be supported by a B/F clamp, not a sleeve.)

When all posts and decks are up, check again that they are plumb/level. Posts on units for ages 2-5 typically extend 30" to 32" (not counting cap) above decks that are higher than 30" above the safety surface. On units for ages 2-12 or 5-12 the tops of posts will typically be 40"-42" above the deck surface. Posts supporting roofs, of course, will be higher.

Installation tip: Install 4-post roofs before pouring any concrete. Posts holding roofs must be carefully leveled from post top to post top so that roof will be level when in place—remember: **no caps on these posts!** After all decks are installed, set roof in place and check that it is level. Particular care should be taken with post footings for these posts so that depth is uniform. It is difficult to adjust hole depth with posts in place and assembly under way.

Installation warning:

DO NOT STAND ON DECK TO INSTALL ROOF: support sleeves should not be pinned at this stage—only set screws will be holding up the sleeves/decks. Work from ladders on each side of deck. On higher decks posts may be swedged for post extensions. These will permit some adjustment to make leveling the roof simpler. Do them later.

NOTE: Hex roofs are heavy and awkward to handle. Wait until concrete has set at least 24 hours before installing.

SECTION V: Fasteners and Clamp Security

A. FASTENER TIGHTENING:

Proper tightening of all fasteners can not be over-emphasized. Bolts, nuts, screws, and expansion pins are essential to the structural integrity of every assembly and the over-all safety of your Playsystem. In the "tools" section a torque wrench is discussed. While it is not necessary to check each fastener with a torque wrench, inexperienced installers should use this tool to develop a sense and "feel" for how the clamps should be properly tightened. Clamps should be tightened at to at least 18 foot pounds and not in excess of 26 f.p. Other fasteners, while not given torque specifications, should be tightened fully. Since lock washers are required on most of these, installers should use them to gauge how much they tighten the fastener. The lock washer should be **fully compressed**—but not **over-tightened**. If too tight, the lock washer will begin to re-open and will be forced out from under the bolt head—any lock washer found in this condition must be replaced.

Do not use breaker bars or extension levers for tightening any fasteners on this system. If fasteners will not tighten it is likely that a bolt or nut has been contaminated (by sand, dirt, etc.)—use WD-40 and an appropriate tap (if necessary) to clean the threads, then re-assemble. ASTM Standard 1487 requires that wherever more than two threads protrude from a nut, these should be cut off and the end of the bolt should be peened smooth by the installer. Because plastic parts will vary in thickness due to ambient temperature as well as molding variations, installers should always check for thread protrusion throughout the installation process, taking care to trim and peen exposed threads as necessary.

B. CLAMP SECURITY

Clamp expansion pins: These fasteners provide additional clamp security, preventing loose clamps from getting lost or from damaging the finish and/or the attachment. You may install them at the very end of the job—but *take care as you build to pin those clamps that will later become inaccessible to the drill*. Generally concrete should be set, decks and attachments rechecked (to be level or plumb), and all clamps fully tightened before pinning clamps or deck sleeves. Drill through pilot hole in "B" side of clamp with a 1/4" bit (or 5/16" for sleeves) and go completely through post wall. Drive pin flush with clamp/sleeve surface. Take care not to strike the clamp/sleeve, as finish damage will result. In rare instances clamps may fail during drilling—typically these have been over-tightened. If this should occur, you must check clamps for excessive torque before drilling. Be sure torque is no greater than 26 foot-lbs.

Clamp set screws: These are required on every "F" clamp half, even special front clamps drilled for an expansion pin (these pins are for additional security, e.g. on plastic panels, barrier/grabs, etc.). After clamp is fully tightened, hold pipe securely in position and fully tighten set screw. Do not let set screw force pipe back out of socket. Clamp design allows set screws in either top or bottom side of socket—pick the side that is most accessible. Tighten screw until it is flush with clamp. No threads should protrude. Occasionally two set screws are used for additional security—in such cases extra set screws are noted on event schedule.

Clamp socket expansion pins: NEVER DELETE! These are denoted on schedules as "Special Fronts." Instructions for installation are discussed in assembly details where these are required. Additionally, a page is provided to highlight events that typically require pinning pipes into the clamp.

Hinged Clamps: Some play events (Clatter Bridges, many overhead events, and all Post-mounted Climbers and 5-post Hex Decks) may use *hinged clamps* to provided extra strength and security. These should be installed using the same torque specifications as the typical 2-part clamps. After decks and events are leveled and clamps fully tightened, these clamps also **MUST** be PINNED with ¼ x ¾" expansion pins

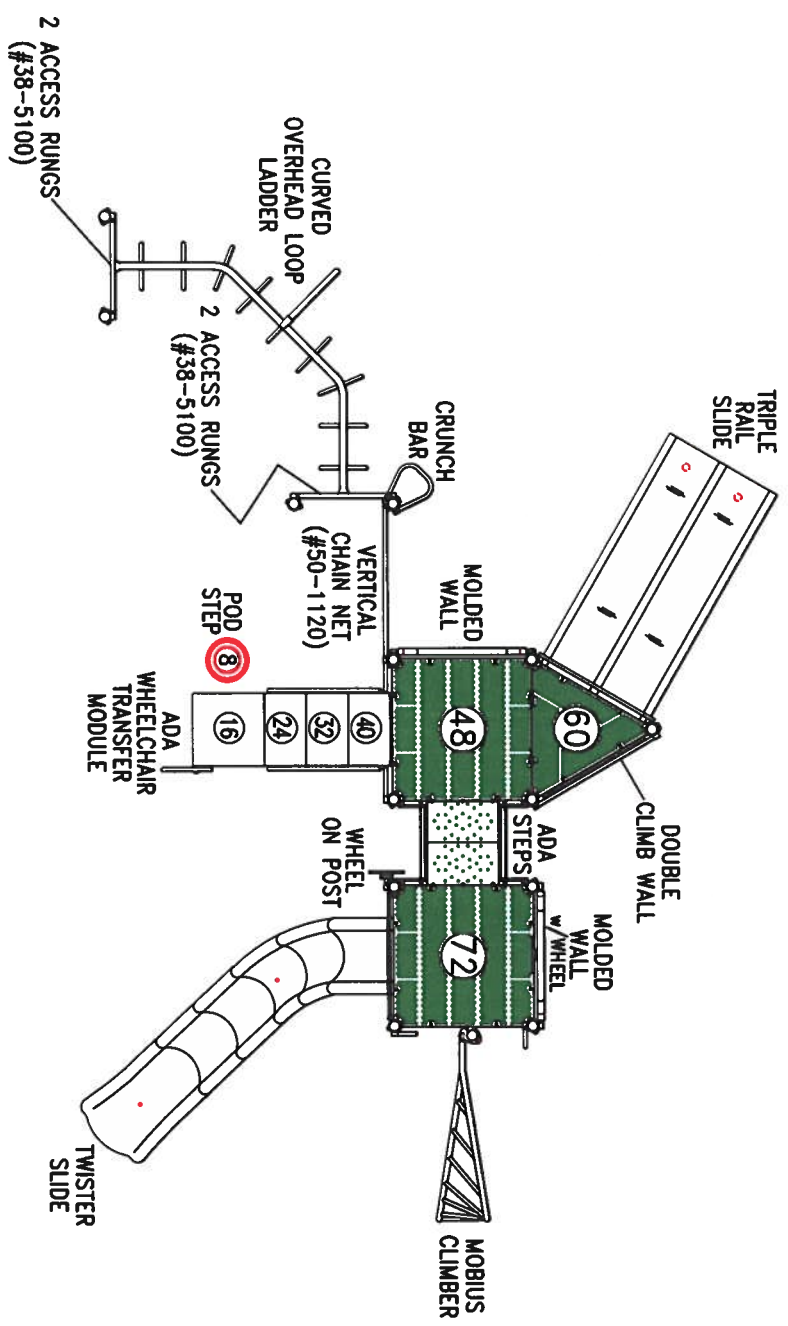
FINAL NOTE: Secure site when unattended. Permit no access until unit is fully assembled, safety surface is in place, and the structure has passed its initial safety inspection (see maintenance instructions).

DECK HT. ---
 (24) INDICATES TOP OF DECK IS 24" ABOVE TOP OF SAFETY SURFACE.

A PROTECTIVE SURFACE IS REQUIRED FOR THIS PLAYSYSTEM THAT MEETS THE REQUIREMENTS OF ASTM F1292.

ACTUAL SIZE: 29' x 20'
 REQUIRED AREA: 41' x 32'
 AGES: 5-12

TITLE		PLAN VIEW	
SCALE:	3/16"=1'	Kidstuff	Playsystems
DATE:	08/16/24	REV. NO.:	01
		REV. DATE:	10/02/24
MODEL:	7860-02	DWG:	



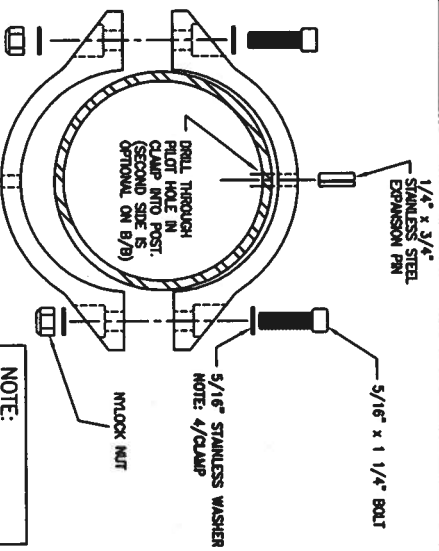
Fun Zone

CLAMP DETAILS	
NAME	KIDSTUFF PLAYSYSTEMS
NUMBER	GM/KR
DATE	11-01-11
BY	11-01-11

B/B CLAMP: DOUBLE-BACK CLAMP

USE UNDER
DECKS

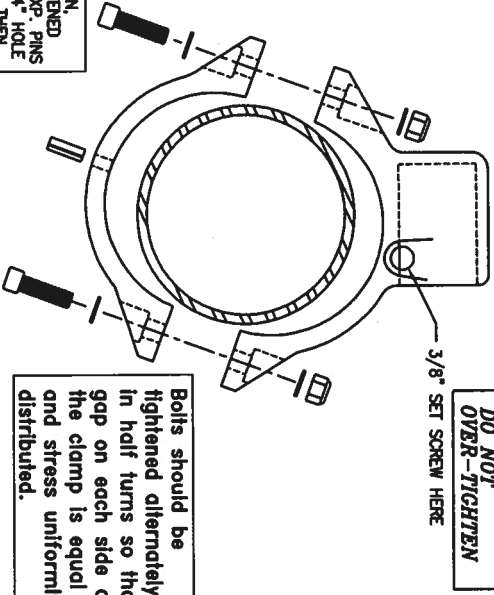
WASHERS MUST BE INSTALLED AS SHOWN TO PROPERLY TORQUE CLAMPS AND TO PREVENT INJURY FROM ANY EXPOSED THREADS. DO NOT DELETE WASHERS.



B/F CLAMP: BACK/FRONT CLAMP

USE FOR
ATTACHMENTS

NOTE THAT SOME EVENTS (IE. FIREPOLES, COIL CLIMBERS AND SOLID PLASTIC WALL PANELS) HAVE SPECIAL CLAMPS WITH HOLES IN SOCKET FOR RETAINING PINS.



AFTER COMPLETION OF INSTALLATION, ALL CLAMPS SHOULD BE RE-TIGHTENED TO TORQUE SPECIFICATIONS AND EXP. PINS SHOULD BE INSTALLED. DRILL 1/4" HOLE THROUGH PILOT HOLE AND CLAMP, THEN DRIVE PIN IN FLUSH TO CLAMP. AVOID STRIKING CLAMP AND DAMAGING FINISH.

©COPYRIGHT KIDSTUFF PLAYSYSTEMS, INC. 12/06

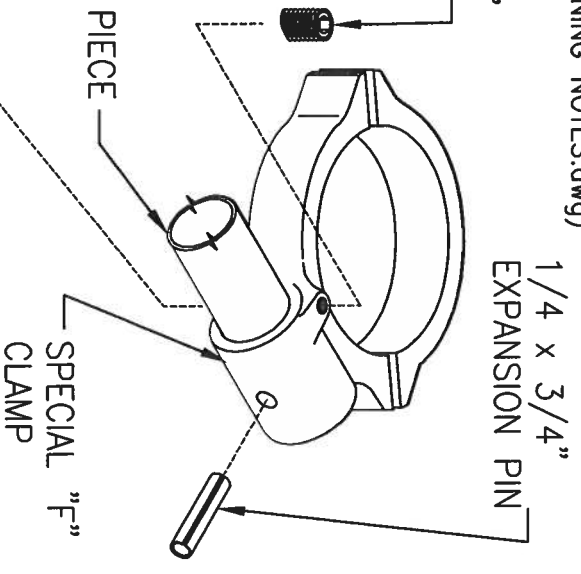
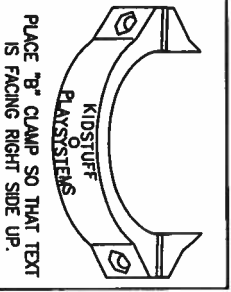
Fun Zone

SPECIAL DRILLED CLAMPS	
NAME	KIDSTUFF PLAYSYSTEMS
NUMBER	GM/KR
DATE	11-01-11
BY	11-01-11

SPECIAL DRILLED CLAMP ONLY

SEE "PINNING LOCATIONS" DRAWING FOR DETAILS ON WHAT TO PIN IF NECESSARY (SEE CLAMP PINNING NOTES.dwg)

3/8" x 1/2"
SET SCREW
(ENLARGED)



** SET SCREWS MAYBE INSERTED INTO EITHER TOP OR BOTTOM SIDE OF SOCKET. USE THE SIDE THAT IS MOST ACCESSIBLE.

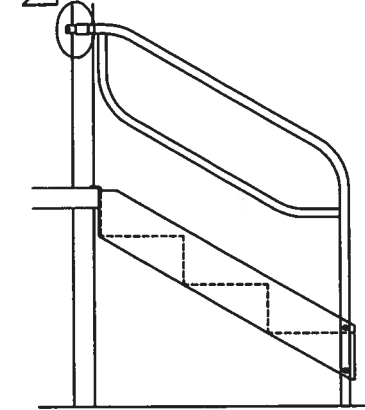
TITLE		PINNING LOCATIONS	
PAGE:		KIDSTUFF PLAYSYSTEMS	
DRAWING:	CLAMP PINNING NOTES	APPROVED:	GM/KR
00 03-22-12 ORIGINAL DRAWING			
03 09-04-15 ADDED OFFSET RUNG SINCE PINNING IS REQUIRED.			

SPECIAL DRILL F-CLAMP PINNING LOCATIONS

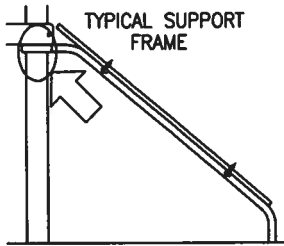
ALL B-CLAMPS REQUIRE PINNING

- = PIN CLAMP
- ⇨○ = PINNING OPTIONAL
- X = NO PIN NEEDED

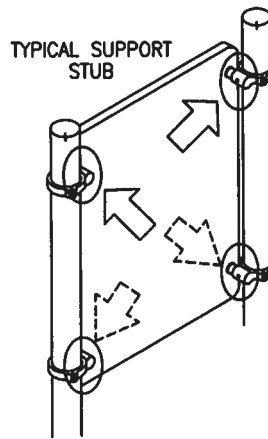
TYPICAL STAIR HANDRAIL



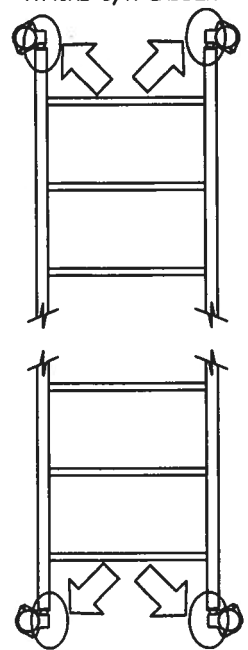
TYPICAL SUPPORT FRAME



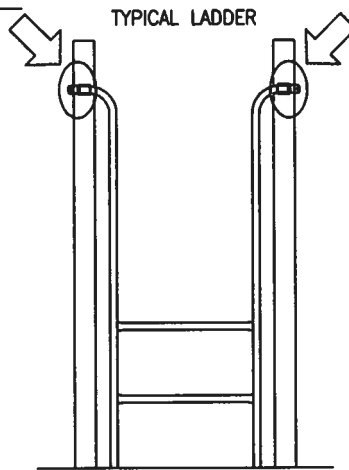
TYPICAL SUPPORT STUB



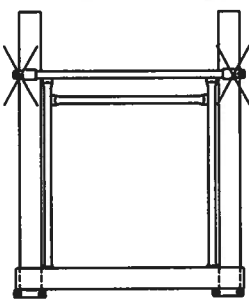
TYPICAL O/H LADDER



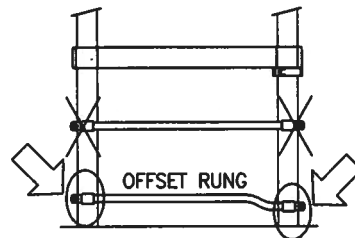
TYPICAL LADDER



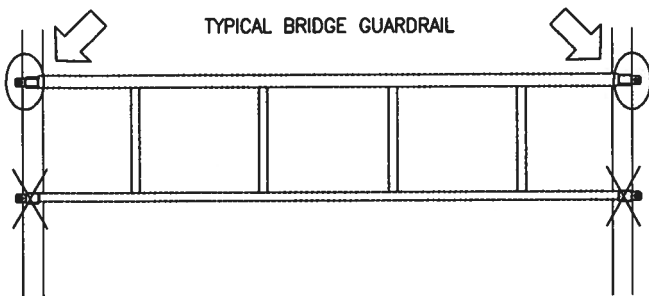
TYPICAL ENTRY FRAME



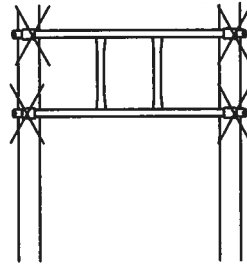
TYPICAL SUPPORT RUNG/PIPE



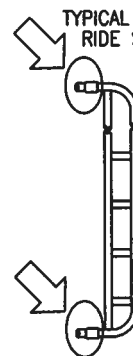
TYPICAL BRIDGE GUARDRAIL



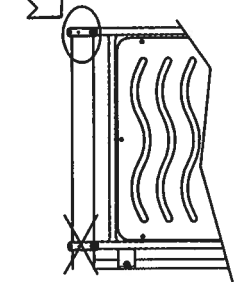
TYPICAL GUARDRAIL



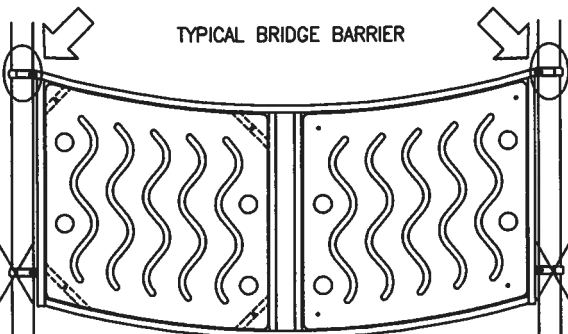
TYPICAL TRACK RIDE STEP



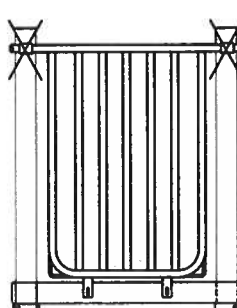
TYP. SPIRAL SLIDE BARRIER RAIL



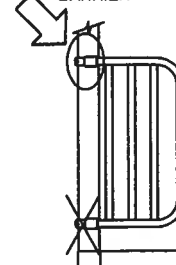
TYPICAL BRIDGE BARRIER



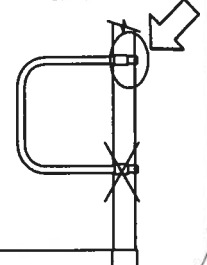
TYPICAL BARRIER



TYPICAL ENTRY BARRIER



TYPICAL ENTRY GRAB





TITLE		HARDWARE LEGEND (TYP)	
PAGE:		KIDSTUFF PLAYSYSTEMS	
DRAWING:		APPROVED:	
HARDWARE LEGEND_TYP		VG/KR	
00 04-22-04 ORIGINAL DRAWING			
01 09-22-10 ADD NEW BORDER AND HARDWARE			

BOLTS AND MISC. HARDWARE SHEET

ITEMS ARE NOT TO SCALE.

BOLTS & SCREWS

VIEW	NAME OF THE ITEM
	BUTTON HEAD ALLEN BOLT (BHAB)
	ALLEN HEAD BOLT (AHB)
	CARRIAGE BOLT (CB)
	HEX BOLT (HB)
	FLAT HEAD BOLT (FHB)
	WOOD/PLASTIC SCREW (WPSC)
	SELF-TAP SCREW (STSC)
	SHOULDER BOLT (SB)
	SET SCREW (SETSC)

WASHERS & MISC. HARDWARE

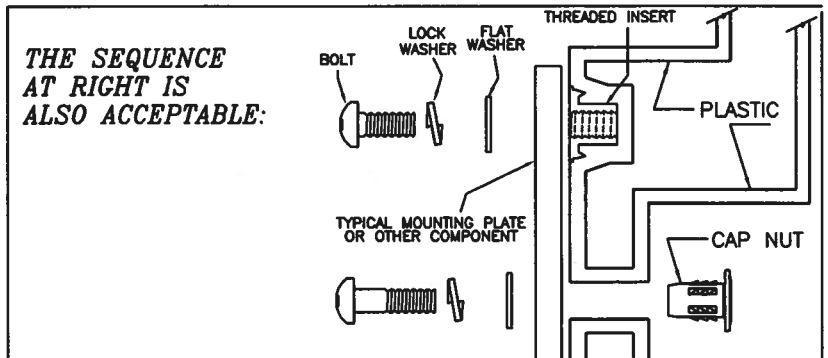
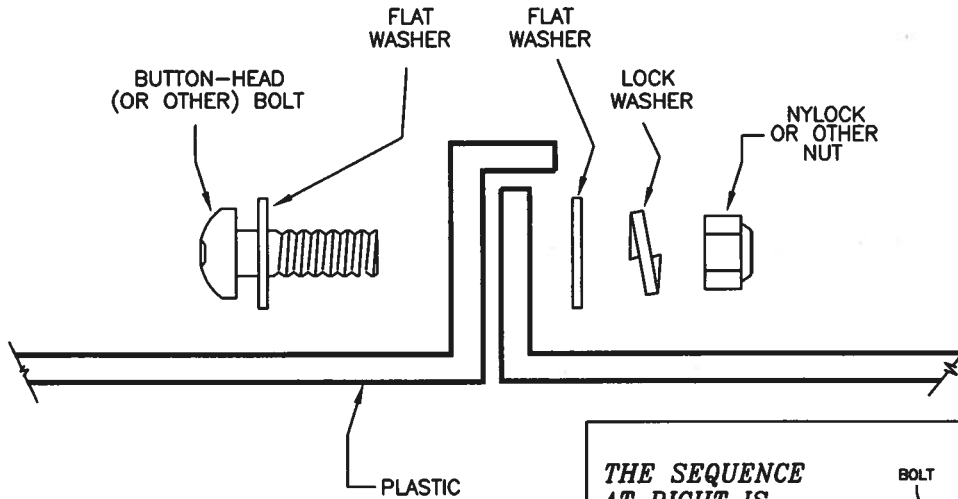
VIEW	NAME OF THE ITEM
	LOCK WASHER (LCKW)
	FLAT WASHER (FLTW)
	BEVELLED WASHER (BEVW)
	CLAMP WASHER (CLPW)
	RETAINING COLLAR (RTNC)
	SHACKLE (SHKL)
	DRIVE RIVET (DRVTV)
	EXPANSION PIN (EXPN)
	ALLEN WRENCH (AW)
	S-HOOK (SHK)

NUTS

VIEW	NAME OF THE ITEM
	NYLOCK NUT (NYLN)
	NYLOCK JAM NUT (NYJAM)
	FLAT HEAD CAP NUT (FHCN)
	INSERT NUT (INSNUT)
	CAP NUT (CAPN)
	HEX NUT (HEXN)
	ROUND BASE NUT (RBAN)
	TEE NUT (TNUT)
	HEX DRIVE JOINT CONNECTOR (HXJC)

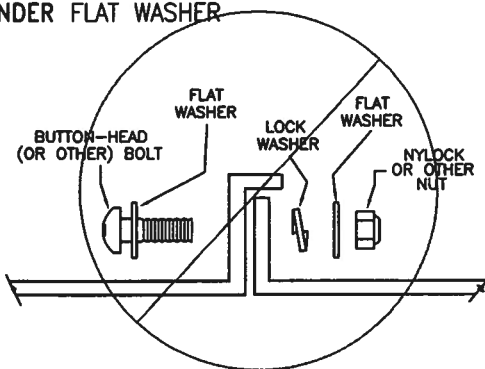
SHOWN BELOW IS CORRECT PLACEMENT OF LOCKWASHER.

NOTE THAT LOCK WASHER SHOULD BE BETWEEN NUT AND FLAT WASHER, *NEVER UNDER THE FLAT WASHER.*



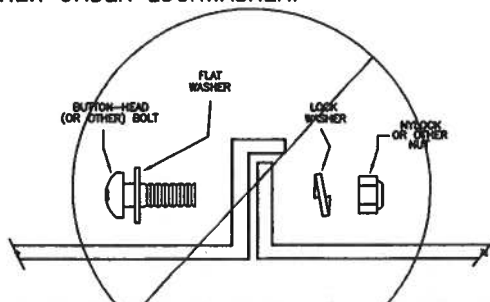
ARRANGEMENTS BELOW ARE ALWAYS INCORRECT:

LOCKWASHER UNDER FLAT WASHER



THIS IS ALSO UNACCEPTABLE:

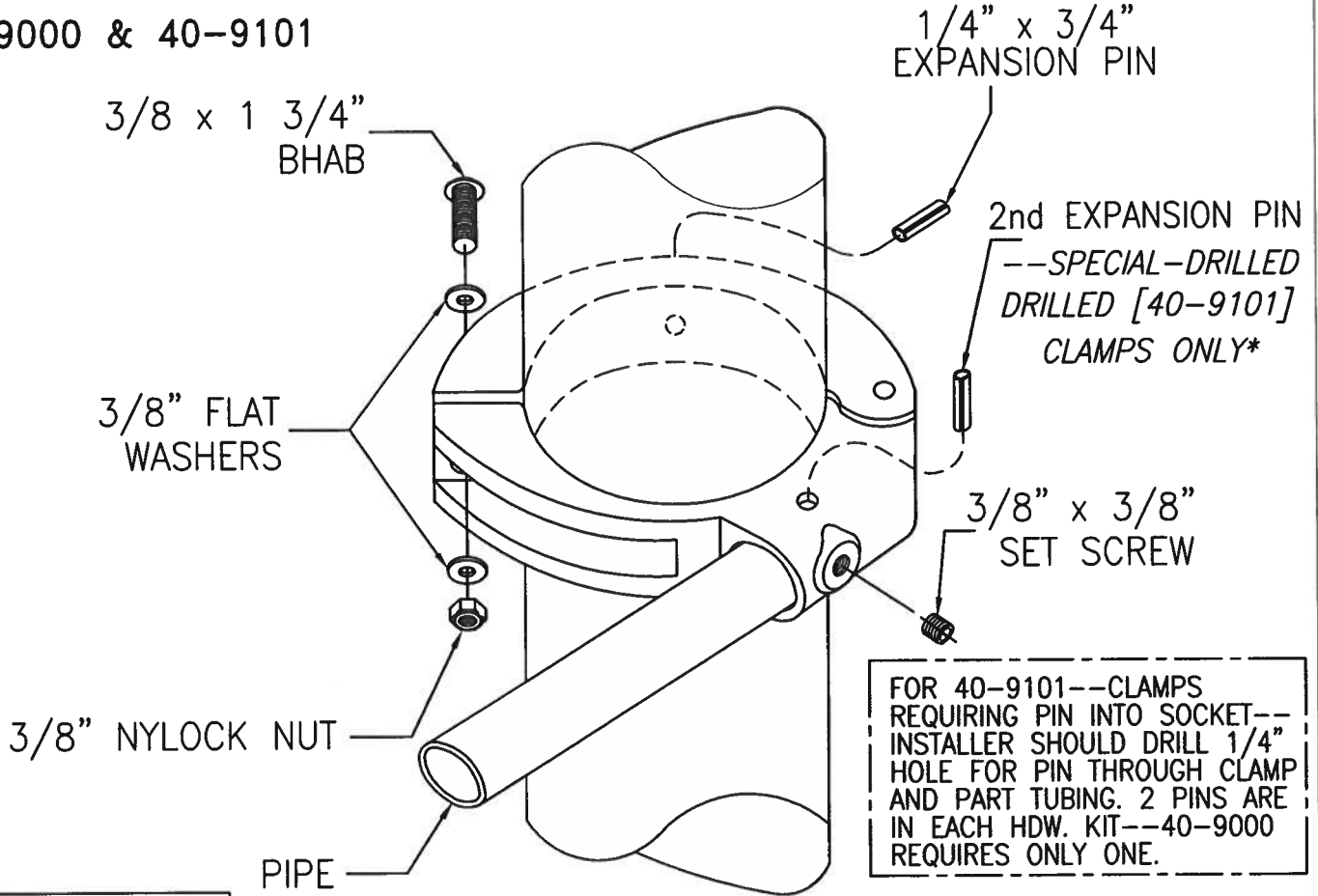
NO FLAT WASHER UNDER LOCKWASHER:



Fun Zone

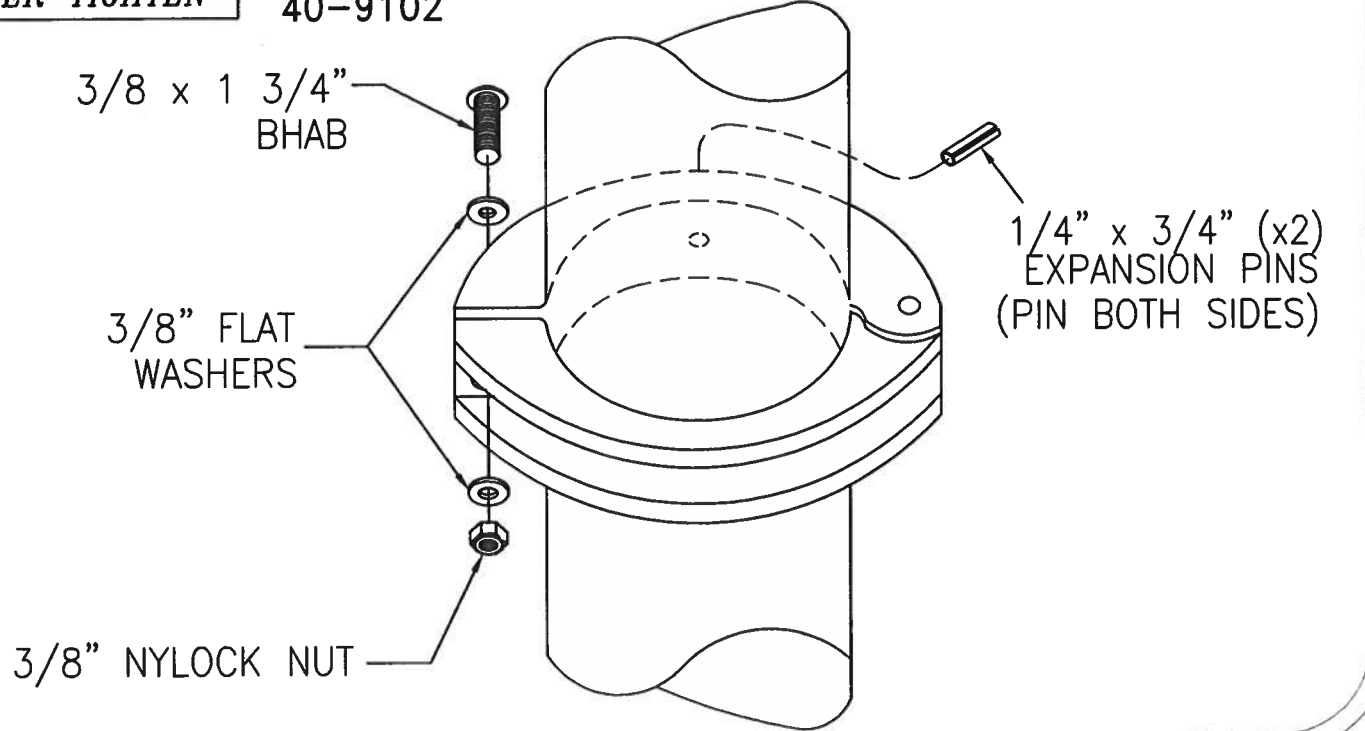
TITLE		HINGED CLAMP DETAILS	
PAGE:		KIDSTUFF PLAYSYSTEMS	
DRAWING:		HINGED CLAMP DETAIL	
APPROVED:			
00	05-05-17	ORIGINAL DRAWING	
07	2-10-22	v6: REV'D HDW FOR CAR; v7: DISCUSS 40-9101 REQ'S	

40-9000 & 40-9101



**NOTE: DO NOT
OVER-TIGHTEN**

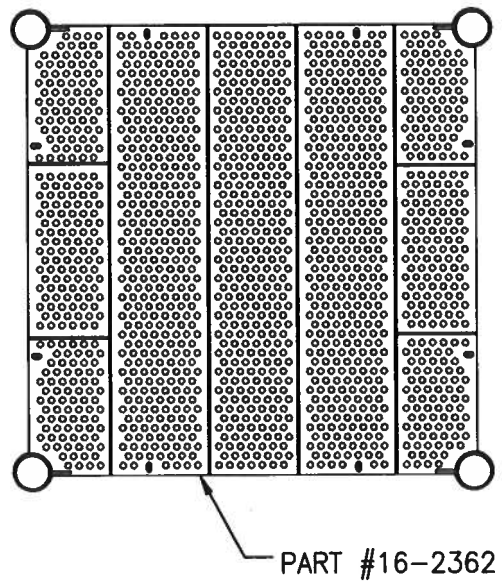
40-9102



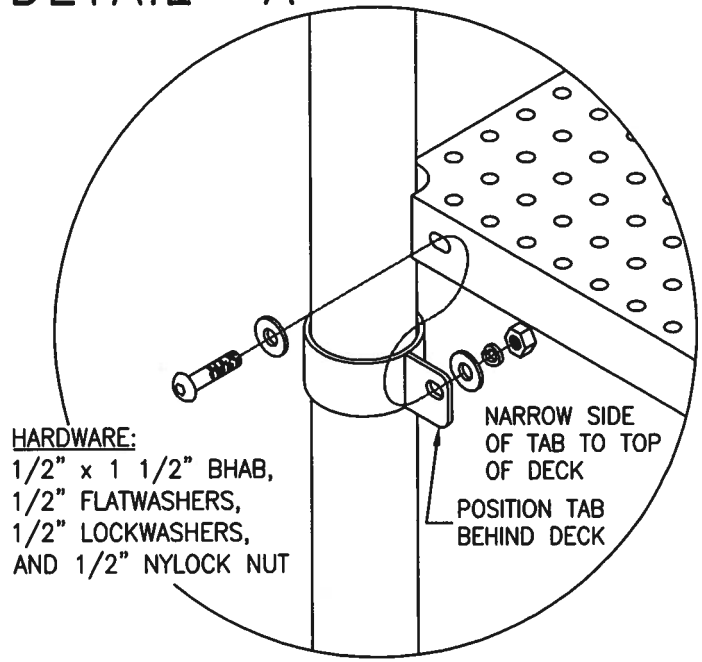
NOTE: PLEASE REVIEW INDIVIDUAL INSTRUCTIONS FOR A STRUCTURE BEFORE INSTALLING DECKS. SOME PLAY EVENTS REQUIRE A DECK SLEEVE TO BE ORIENTATED A CERTAIN WAY.

TITLE		SQUARE/46 DECK	
PAGE:		KIDSTUFF PLAYSYSTEMS	
DRAWING:		Square Deck--Hx46	
00 04-25-07 ORIGINAL DRAWING		APPROVED:	
09 08-17-21 ADDED DECK ORIENTATION NOTE			

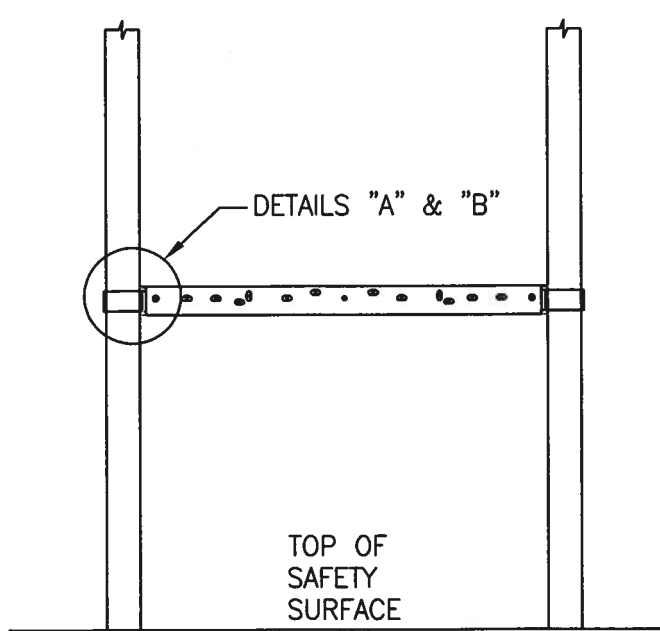
PLAN VIEW



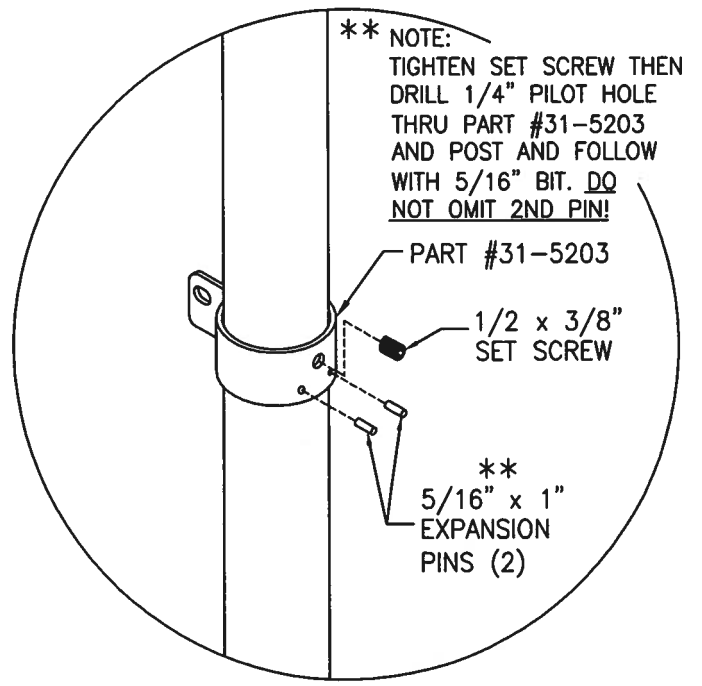
DETAIL "A"



FRONT ELEVATION



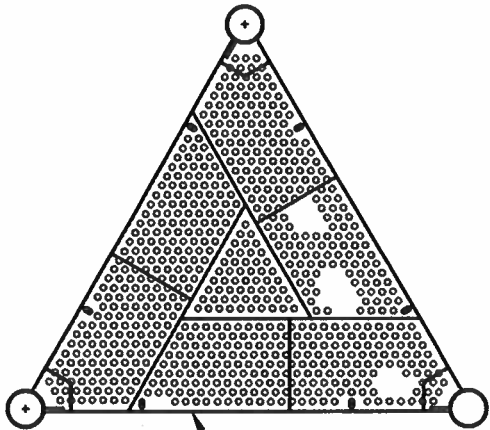
DETAIL "B"



Fun Zone

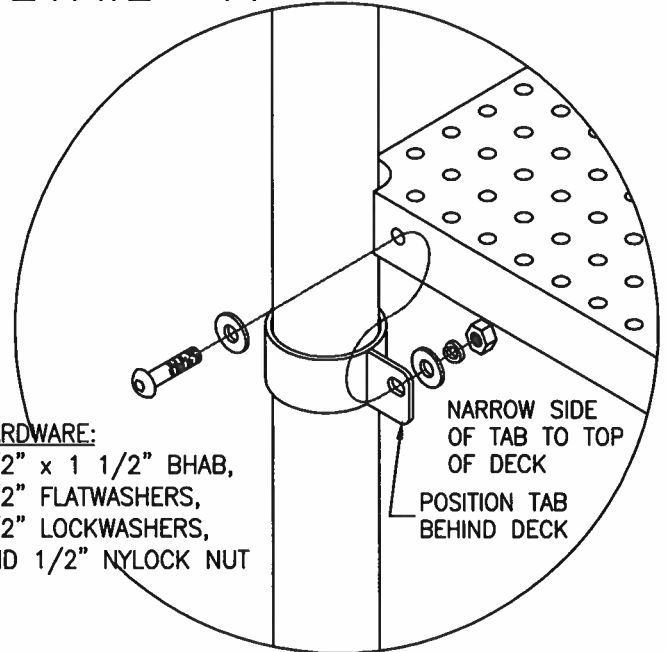
TITLE		EQ. TRIANGLE/46 DECK	
PAGE:		KIDSTUFF PLAYSYSTEMS	
DRAWING:		Equilateral Triangle Deck--Hx46	
00 08-14-08 ORIGINAL DRAWING		APPROVED:	
05 11-30-17 REVISED NOTE TO TIGHTEN SET SCREW FIRST.			

PLAN VIEW



PART #16-2633

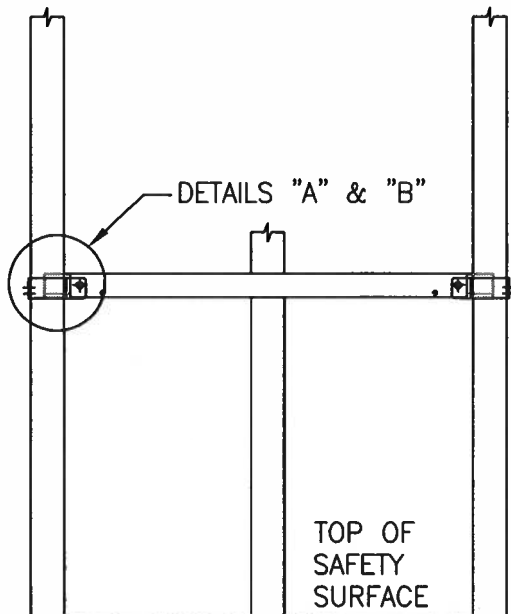
DETAIL "A"



HARDWARE:
 1/2" x 1 1/2" BHB,
 1/2" FLATWASHERS,
 1/2" LOCKWASHERS,
 AND 1/2" NYLOCK NUT

NARROW SIDE
 OF TAB TO TOP
 OF DECK
 POSITION TAB
 BEHIND DECK

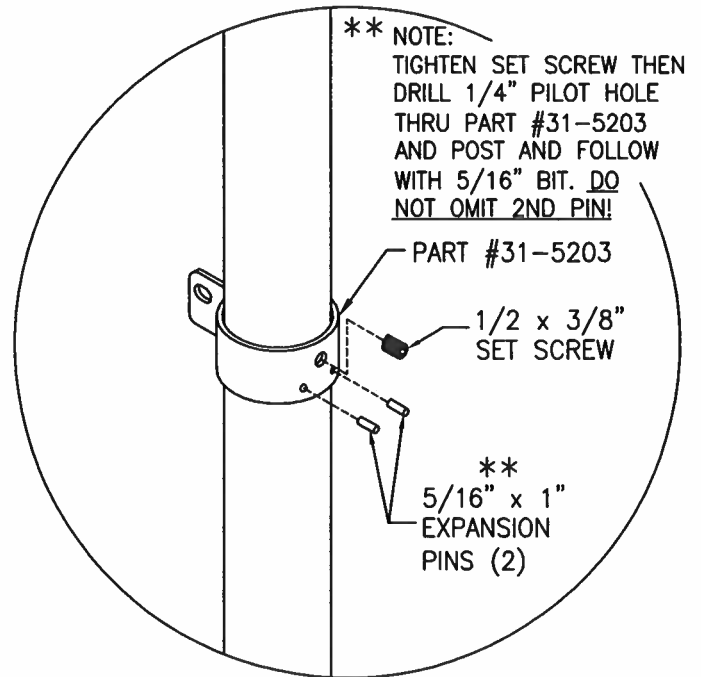
FRONT ELEVATION



DETAILS "A" & "B"

TOP OF
 SAFETY
 SURFACE

DETAIL "B"



**** NOTE:**
 TIGHTEN SET SCREW THEN
 DRILL 1/4" PILOT HOLE
 THRU PART #31-5203
 AND POST AND FOLLOW
 WITH 5/16" BIT. DO
 NOT OMIT 2ND PIN!

PART #31-5203

1/2 x 3/8"
 SET SCREW

 5/16" x 1"
 EXPANSION
 PINS (2)

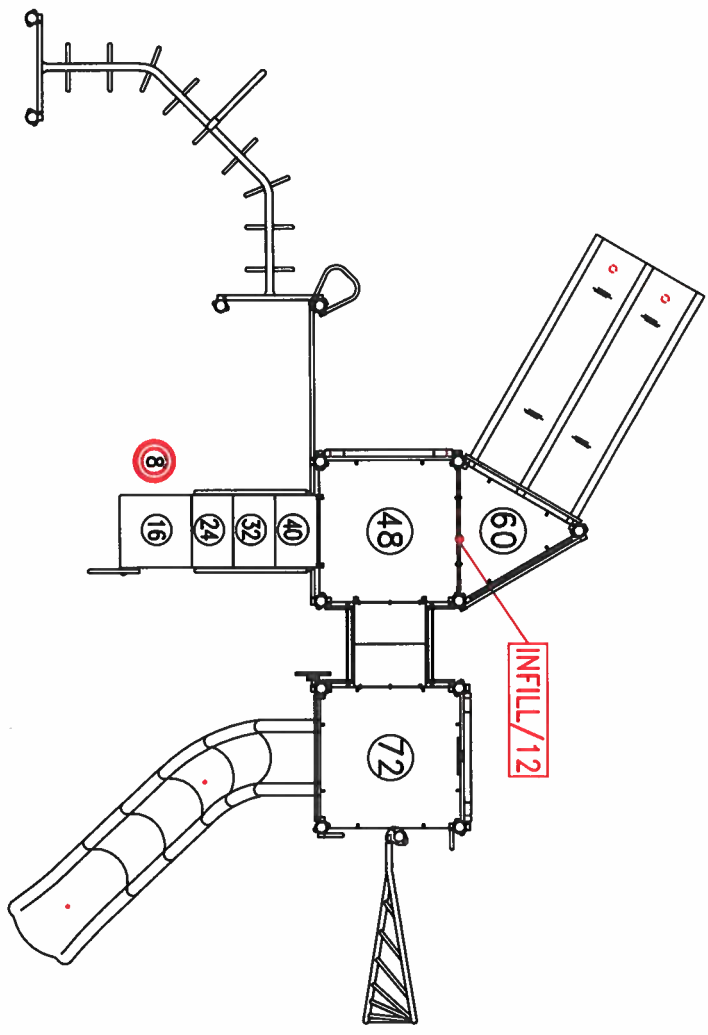
TITLE

INFILL LOCATIONS

SCALE: 3/16"=1' | Kidstuff Playsystems

DATE	REV. NO.	REV. DATE	APPROV.
08/16/24	01	10/02/24	

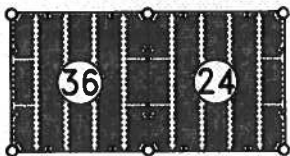
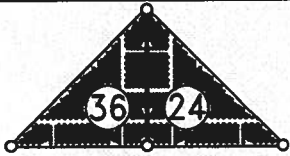
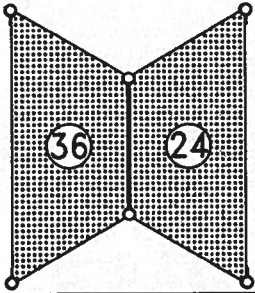
MODEL: 7860-02	DMG:
----------------	------



Fun Zone

TITLE		INFILL/12 (SQ-46)	
PAGE:		KIDSTUFF PLAYSYSTEMS	
DRAWING:		Infill 12S	APPROVED:
00	08-03-07	ORIGINAL DRAWING	
04	09-13-24	REVISED HARDWARE FOR LOADSTAR DECKS.	

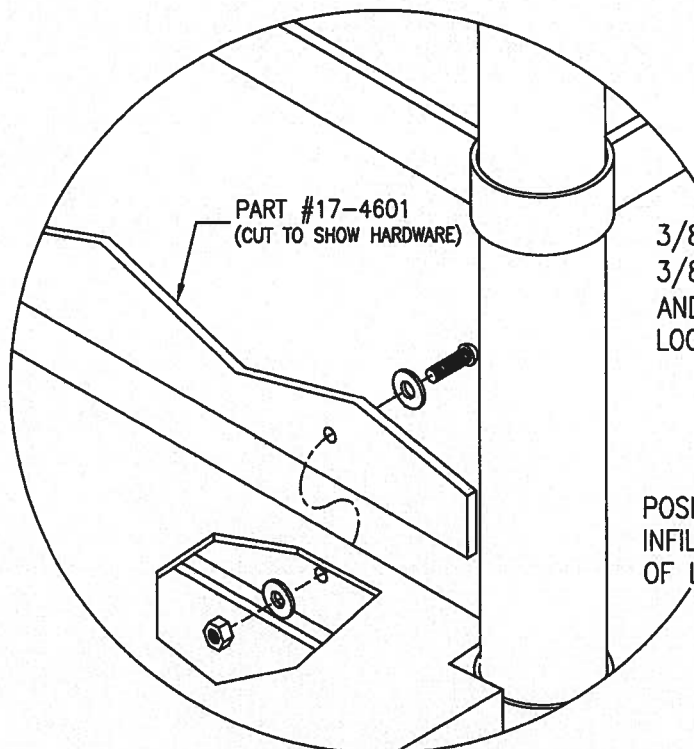
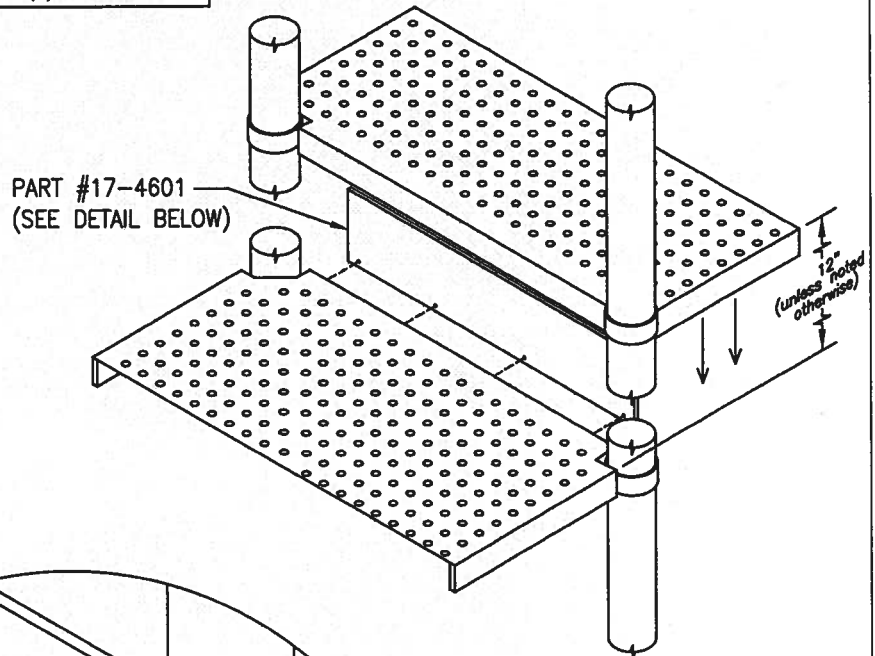
DECK TYPES
(ORIENTATION, DECK HEIGHTS & TYPES MAY VARY)



INFILL NOTES:

- FOR INFILL/12 THE HEIGHT BETWEEN THE TOP OF ADJACENT DECKS WILL BE 12". (EXCEPTIONS WILL BE NOTED.)
- DECK TYPES MAY VARY. ALTHOUGH THE DECKS SHOWN MATCH EACH OTHER THEY CAN VARY IN TYPE. PLEASE SEE PLAN VIEW & INFILL LOCATIONS PAGE.
- DECK ORIENTATION MAY ALSO VARY. EXAMPLES SHOWN ARE NOT A COMPREHENSIVE LIST OF DECK ORIENTATIONS. PLEASE SEE PLAN VIEW FOR THE ORIENTATION(S) PRESENTED.

STEEL SQUARE DECKS SHOWN
(DECK TYPES & ORIENTATION MAY VARY)



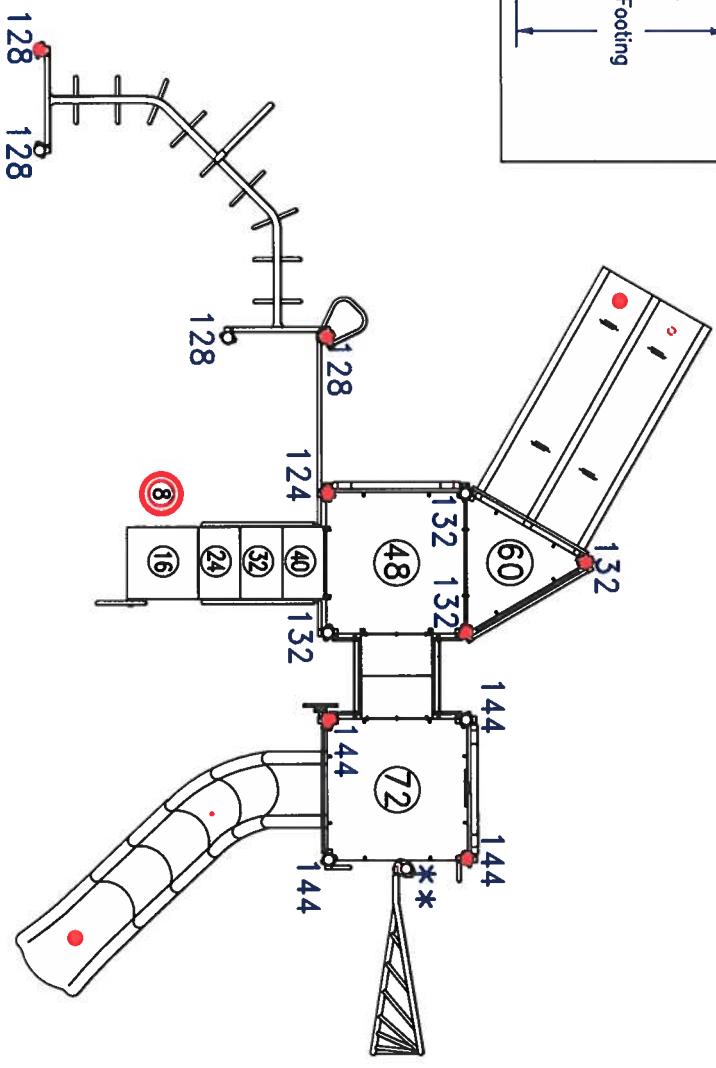
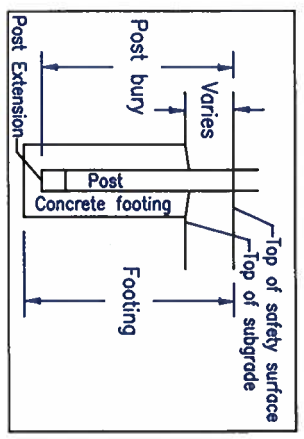
3/8" x 1 1/4" BHAB,
3/8" FLAT WASHERS,
AND 3/8" NYLON
LOCK NUT 4 PLCS.

POSITION LOWER
INFILL PORTION IN FRONT
OF LOWER DECK.

POST NOTE
 80 NUMBER NEXT TO POST INDICATES POST LENGTH. SEE ALSO POST ID CHART.
 48

● = SURFACE LABEL LOCATIONS (9)
 ATTACH LABEL TO HIGHLIGHTED POSTS/LEGS. SEE INSTRUCTIONS.
 (Disregard if using PIP rubber)

**71-9140 w/70-0008 on BOTTOM. 30" post bury; 33" footing
 Use 19-0036 aluminum post caps, if required.



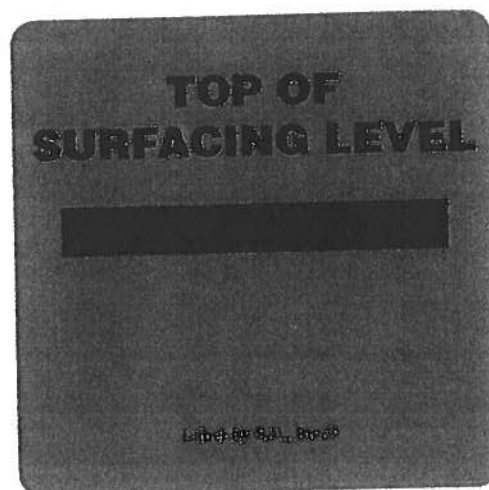
TITLE		POST ID SURFACE LABEL LOCATIONS	
SCALE:	3/16"=1'	REV NO.	01
DATE	08/16/24	REV. DATE	10/02/24
MODEL:		7860-02	
KIDSTUFF PlaySystems		APPROV.	

Safety Surface Indicator Label: Instructions

You are provided with several adhesive-backed labels that indicate the appropriate level of the of the **LOOSE FILL** safety surface surrounding the structure--the number of stickers varies by the size of the unit. In general, one or two stickers should be applied to the posts of each deck module. Additionally, you should affix a sticker to one of the posts at the end of each overhead event and onto the exit support leg(s) of slides when slides are longer than 7 feet.

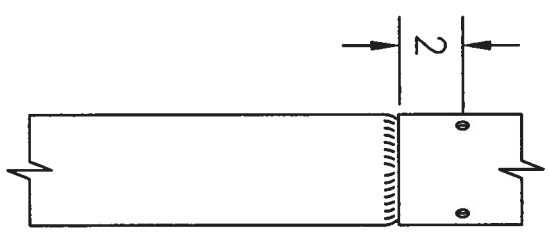
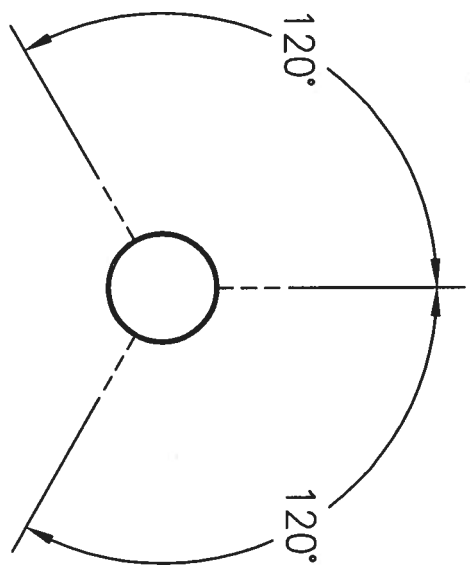
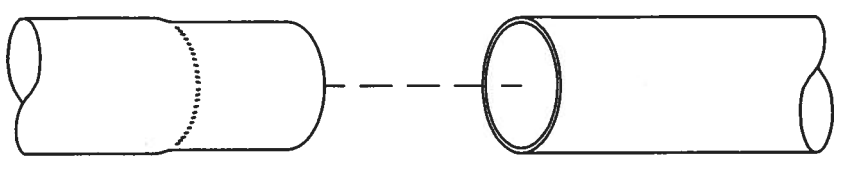
In your instruction packet find the page which illustrates the posts or support legs for which we recommend safety surface labels. If there is a deck on a post, **measure down from the deck** a distance equal to the deck height and affix the label so the indicator line is at that location. **Make sure the label faces out from the unit:** adults are not going to climb under the deck to check the label. If there is no deck on the post (e.g.: at the end of overhead events or on slide support legs) **measure up from the sub-grade** a distance equal to the design depth of the surfacing then place the label so the indicator line is at that **design depth**.

Note: It is best to put these labels on before the safety surface goes in. "**Design depth**" will be **BELOW** the level of any newly installed loose fill material, as compaction is expected to occur over time—extra material is typically installed in anticipation of this compaction. **We sell 12" of loose fill for a unit requiring 9" of surfacing; 15"-15 ½" for a 12" surface.** As a result, the stickers will be a few inches **BELOW** the new loose fill material immediately after the surfacing installation. Make it a point to brush back the some material in such cases to show a few sticker locations to the owner during inspection for owner acceptance. Explain at that time that it is the owner's responsibility, as part of regular and on-going maintenance, to keep the impact-absorbing material **ABOVE** the indicated depth.

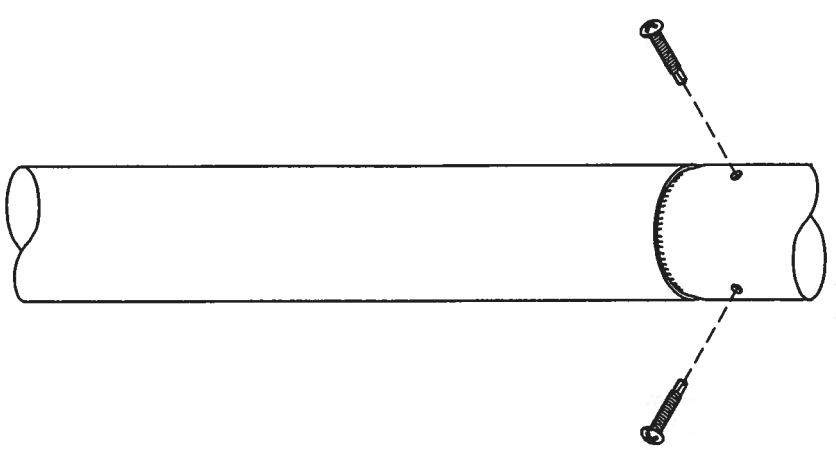


NOTE: MAKE SURE SWEDGE END OF POSTS DOES NOT GO IN GROUND.

- 1. SLIDE EXTENSION ONTO POST
- 2. PRE-DRILL 1/8" D. HOLES

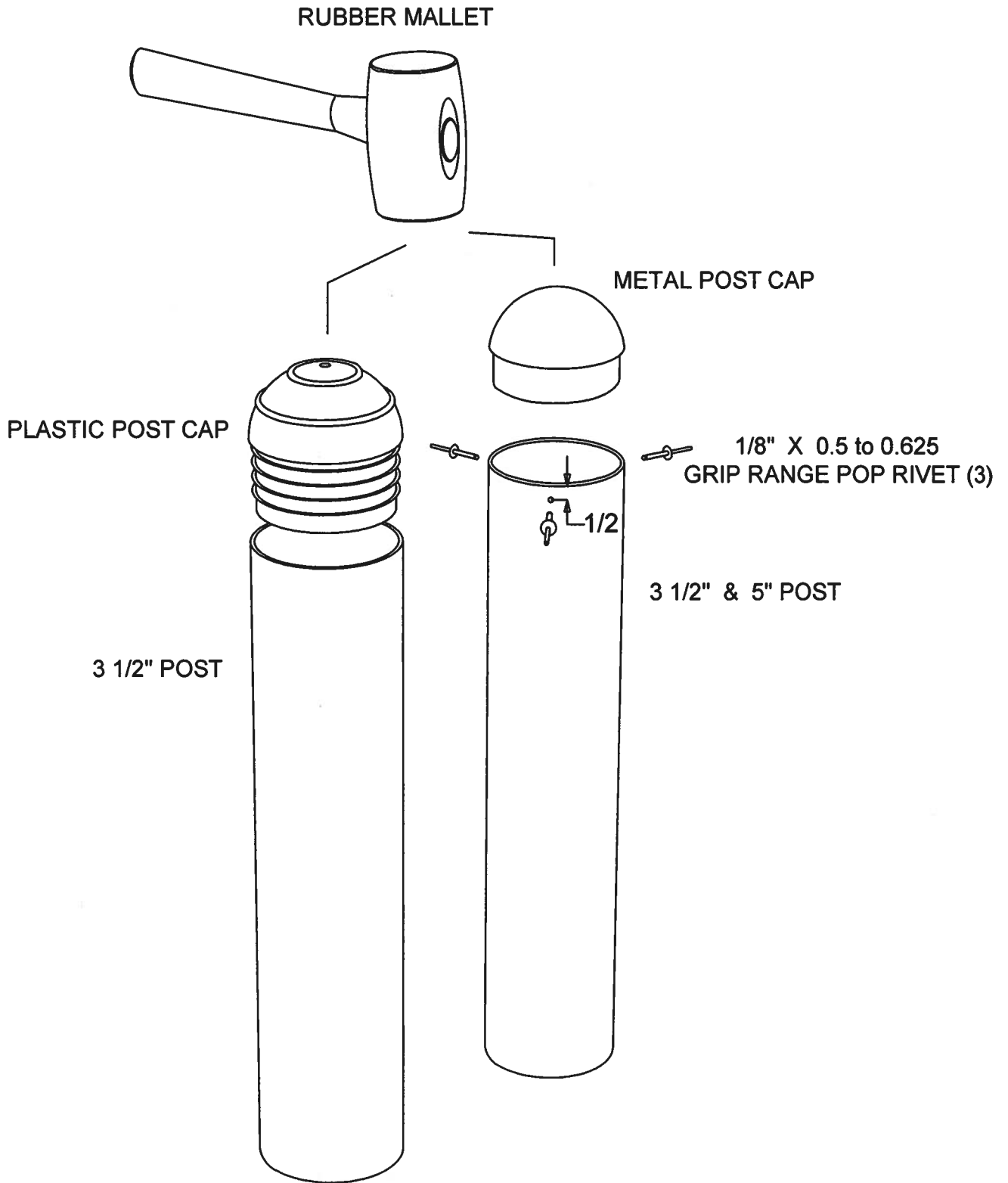


- 3. INSERT #14 x 1 1/2" SELF-TAP SCREWS (3)



TITLE	ROOF POST EXTENSION
PAGE:	KIDSTUFF PLAYSYSTEMS
DRAWING:	Z:\...Post Extension---Roofs
V1	09-03-20 ORIGINAL DRAWING
APPROVED:	

POST CAP INSTALLATION



***WARNING: ASSEMBLE UNIT, DRY FIT, AND FIELD VERIFY DIMENSION BEFORE SETTING OPPOSITE POSTS IN CONCRETE.

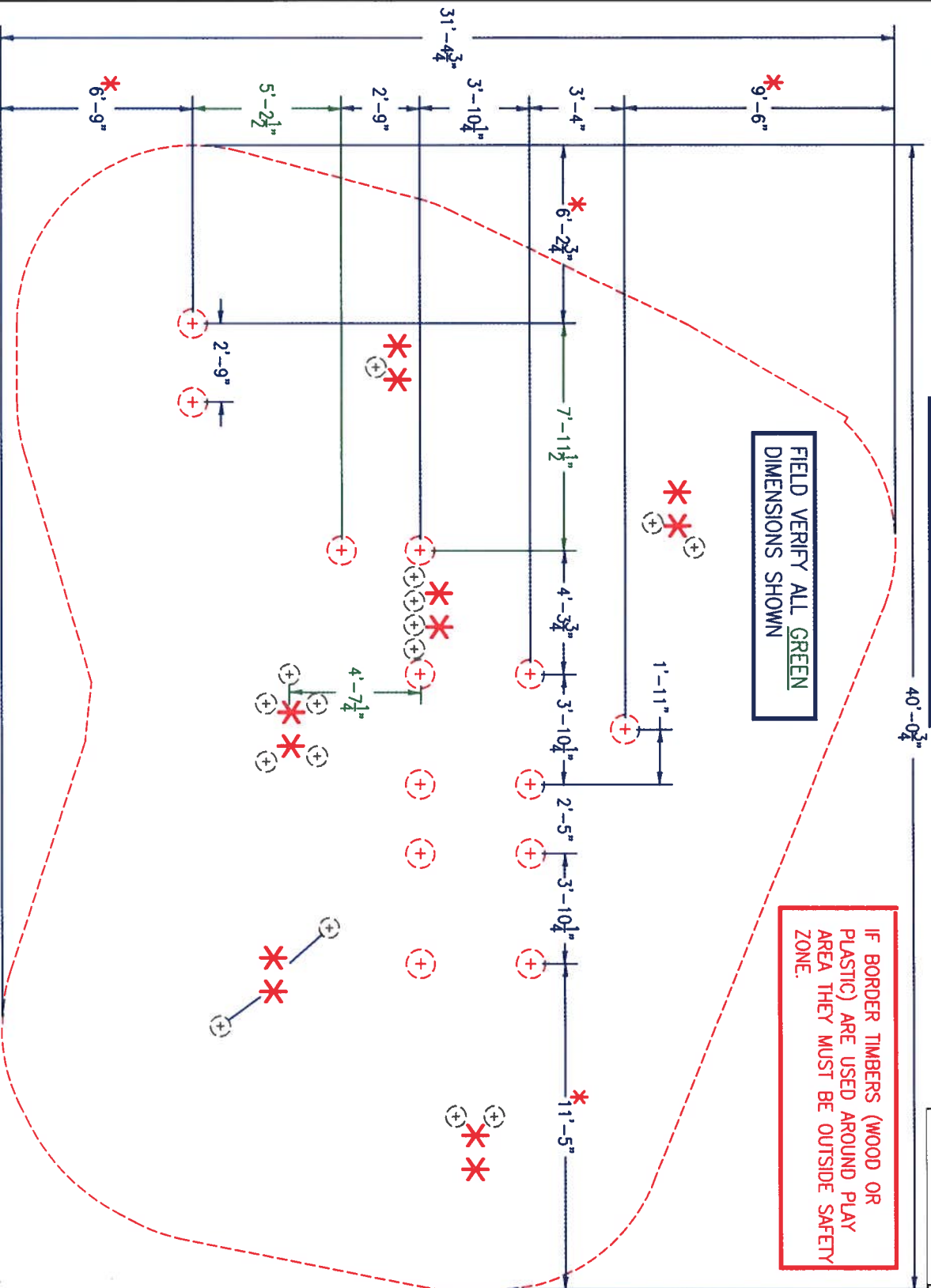
* SEE SEPARATE INSTRUCTIONS FOR DETAILS ON FOOTING LAYOUT

* SAFETY ZONE EXTENDS FT. (')-IN. (") BEYOND CENTER OF POST FOOTING.

FOOTING DEPTH IS MEASURED FROM TOP OF SAFETY SURFACE. DEPTH IS 30" UNLESS NOTED OTHERWISE (SEE FOOTING DET.)

IF BORDER TIMBERS (WOOD OR PLASTIC) ARE USED AROUND PLAY AREA THEY MUST BE OUTSIDE SAFETY ZONE.

FIELD VERIFY ALL GREEN DIMENSIONS SHOWN



TITLE
FOOTING LAYOUT

SCALE:	3/16"=1'	REV. NO.	01	REV. DATE	10/02/24	APPROV.
DATE	08/16/24	REV. DATE	10/02/24			
MODEL:	7860-02	DWG:				

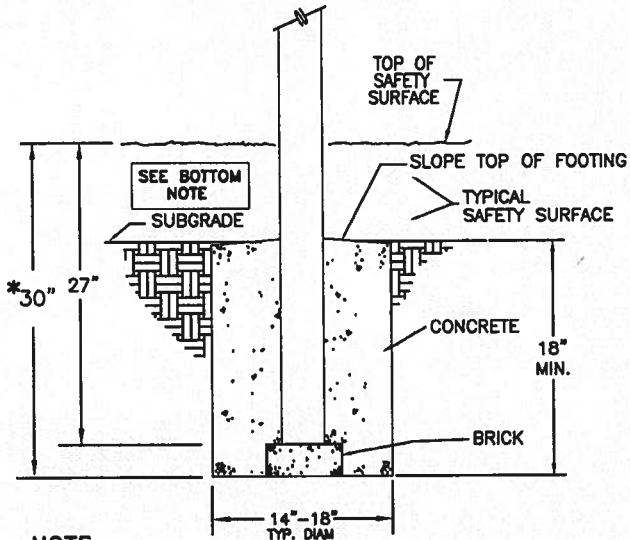
Kidstuff PlaySystems



FOR ALL OTHER FOOTING DETAILS NOT LISTED BELOW SEE APPROPRIATE PLAY EVENT INSTRUCTIONS.

TITLE		FOOTING DETAILS	
PAGE:		KIDSTUFF PLAYSYSTEMS	
DRAWING:		APPROVED:	
Footing Multi			
00/07-20-16	ORIGINAL DRAWING		
04/09-24-24	ADDED SPIRAL SLIDE NOTE		

TYPICAL 3 1/2" POST FOOTING DETAIL



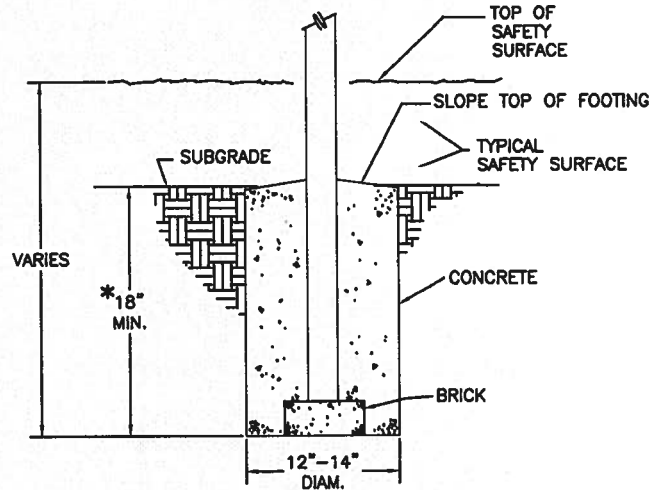
NOTE

FOOTING DEPTH IS MEASURED FROM TOP OF SAFETY SURFACE TO BOTTOM OF FOOTING HOLE. A BRICK OR CONCRETE BLOCK APPROXIMATELY 3" THICK SHOULD BE PLACED BELOW THE POST. CONCRETE SHOULD EXTEND AT LEAST 30" BELOW FINAL GRADE. (CHECK LOCAL CODES, IN NORTHERN LOCALES FROST LINE MAY REQUIRE DEEPER FOOTINGS.)

REMEMBER THAT YOU WILL BE WORKING ON THE SUBGRADE, NOT THE FINISH GRADE. HOLES WILL NOT BE DUG 30" DEEP. HOLE DEPTH DEPENDS ON THE AMOUNT (THICKNESS) OF SURFACE.

*30" IS TYPICAL DEPTH. EXCEPTIONS ARE NOTED ON DRAWINGS OR SCHEDULES.

SLIDE EXIT SUPPORT FOOTING DETAILS



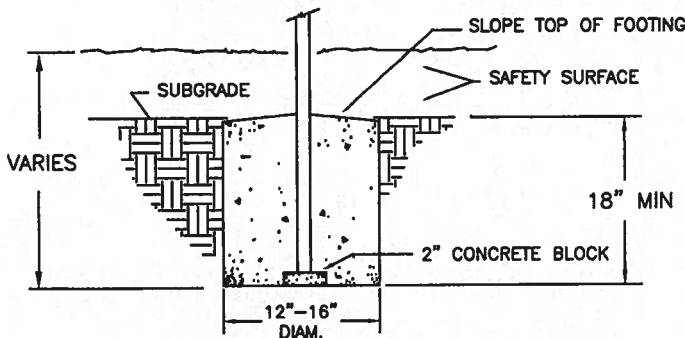
*18" MIN. IS TYPICAL DEPTH FROM SUBGRADE. EXCEPTIONS ARE NOTED ON DRAWINGS OR SCHEDULES.

THIS EXIT SUPPORT DETAIL APPLIES TO THE FOLLOWING EVENTS:

- ** SPIRAL SLIDE (counterclockwise turn)
- TRIPLE RAIL SLIDE/60 (WIDE)
- WAVE SLIDE/48
- Q-TURN SLIDE

** SPIRAL SLIDE EXIT ONLY! SPIRAL MAIN POST HAS SPECIAL FOOTING DETAIL

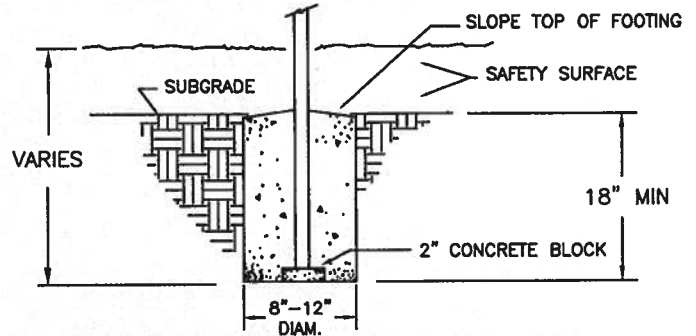
CLIMBER FOOTING DETAILS



THIS DETAIL APPLIES TO THE FOLLOWING EVENTS:

- BEANSTALK CLIMBER
- COIL CLIMBER
- FIREPOLE
- LOOP ARCH CLIMBER
- MOBIUS CLIMBER
- SNAKE CLIMBER
- SPIRAL CLIMBER
- TURTLE CLIMBER
- WACKY CLIMBER

MISC. FOOTING DETAILS



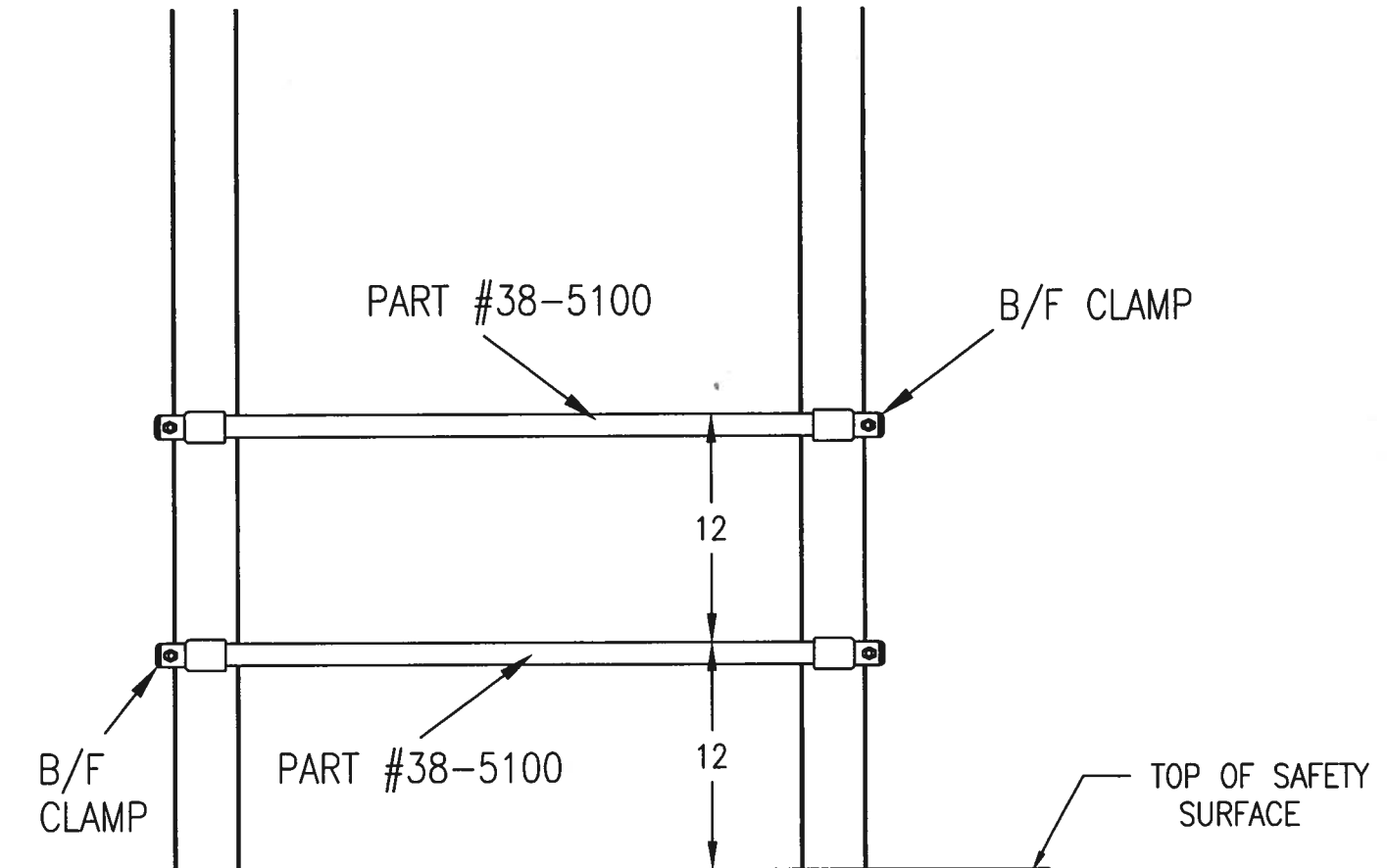
THIS DETAIL APPLIES TO THE FOLLOWING EVENTS:

- BANISTER CLIMBER
 - COMBO SLIDE
 - END LADDERS (ALL)
 - HANDRAILS (ALL)
 - LEGS (FOR OVERHEAD EVENTS)
 - MIDDLE SUPPORTS (ALL)
 - POD or LILYPAD STEPS
 - STOREFRONT COUNTER SUP'T
 - TINY TOT SLIDE
 - TRIPLE-RAIL SLIDE/48-60
 - TRIPLE-RAIL SLIDE/36-42
 - TUBE SUPPORT SADDLES (ALL)
 - WIDE SLIDE (approx. 54" long)
 - WILD WALL SUPPORT LEGS
- (ages 2-5)

Fun
Zone

SEE CLAMP DETAILS

TITLE		ACCESS RUNGS NO DECK	
PAGE:		KIDSTUFF PLAYSYSTEMS	
DRAWING:		Rungs No Deck--12in	APPROVED:
00	00-00-00	ORIGINAL DRAWING	
04	01-21-11	ADDED RUNG NOTE	
05	05-14-18	ADDED CLAMP PINNING NOTE	



RUNGS PLACEMENT FOR LADDER ENDS. IN ORDER TO PRESERVE THIS DISTANCE, DO NOT NEGLECT TO DRILL AND PIN CLAMPS BACK CLAMPS.

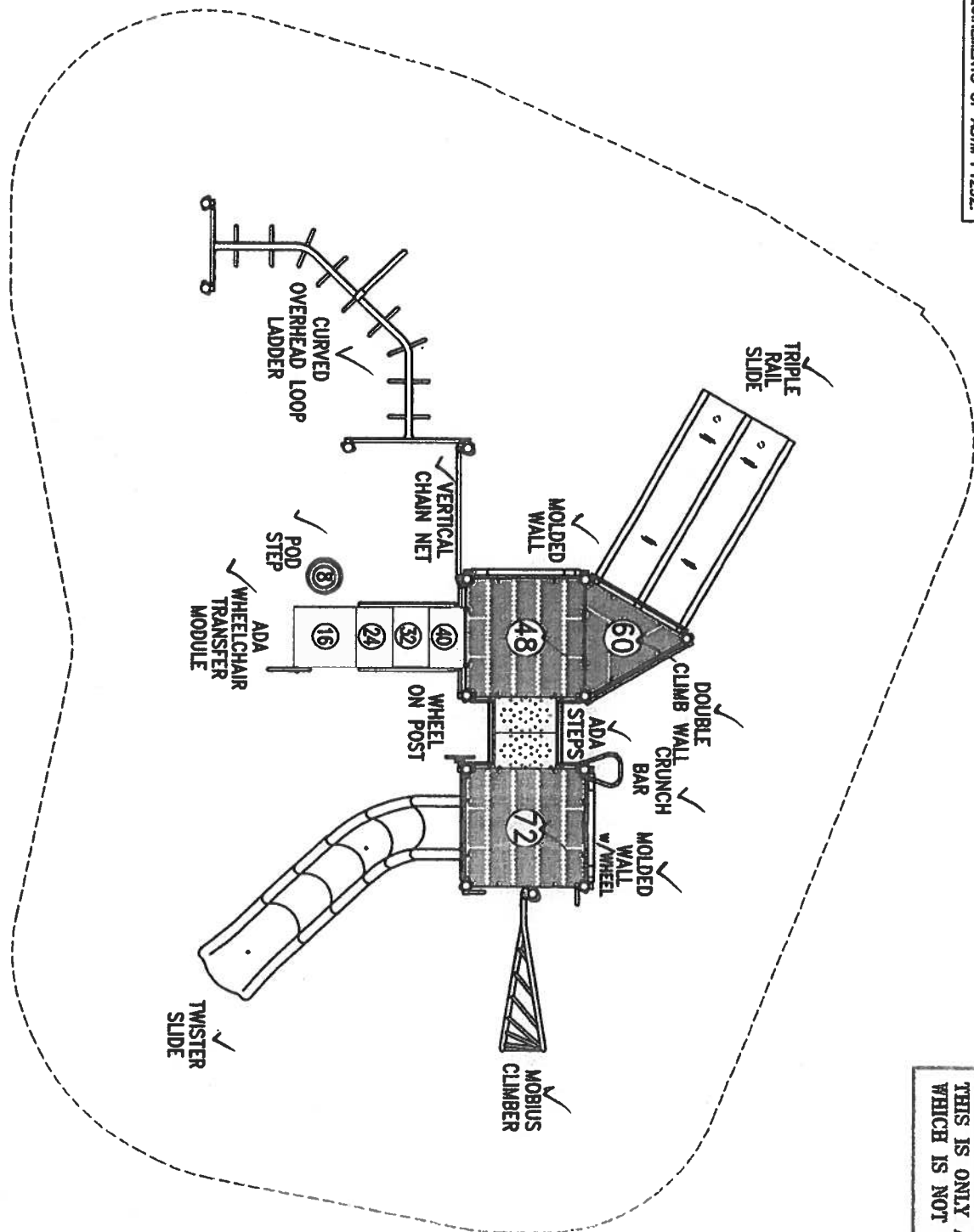
RUNGS SHOULD BE FACING INSIDE WHEN UNDER OVERHEAD FRAME.

**HEAD ENTRAPMENTS CAN CAUSE INJURY AND EVEN DEATH.
DO NOT TAKE THIS CAUTION LIGHTLY!**

DECK HT. --- INDICATES TOP OF DECK IS 24" ABOVE TOP OF SAFETY SURFACE.

A PROTECTIVE SURFACE IS REQUIRED FOR THIS PLAYSYSTEM THAT MEETS THE REQUIREMENTS OF ASTM F1292.

ACTUAL SIZE: 29' x 20'
 REQUIRED AREA: 41' x 32'
 AGES: 5-12



TITLE
PLAN VIEW

SCALE	3/16"=1'	REV. NO.	REV. DATE	APPROV.
DATE	08/16/24	REV. NO.	REV. DATE	APPROV.
MODEL	7860-02	DRWG.		

THIS IS ONLY A PRELIMINARY PLAN WHICH IS NOT FOR CONSTRUCTION.

20002783

Production Manager
Production

Shipping
Coatings

Barre Falls - Model 7860-02

Part No.	Item Description	Color	Sales Order	Inspection Only	Prod.	Date	Approved
16-2362/503	Square Deck, Steel Brown	BRO	2				
16-2633/503	Equilateral Triangle Deck Brown	?	1				
16-7099/503	Transfer Base Brown	?	1				
16-9911/503	Transfer/40 Step Module Brown	?	1				
16-9932/503	Transfer/32 Step Module, Brown	BRO	1				
17-4601	Infill/12, Steel SQ & EQ-Tri Decks	—	1				
18-1570	DbL. Climb Wall Upper Panel	GRN	1				
18-1588	DBL.Climb Wall/60, Lower Panel	GRN	1				
18-4446	ADA Step/24 Side Panel, HX46	GRN	2				
18-4460	ADA Step Upper Barrier, Rt, HX46	?	1				
18-4461	ADA Step Upper Barrier, Lt, HX46	?	1				
18-4468	ADA Step Lower Barrier, Rt, HX46	?	1				
18-4469	ADA Step Lower Barrier, Lt, HX46	GRN	1				
18-4686	Sectional Slide Entry Panel W/ID	TAN	1				
18-6403	Entry Panel, Wide Slide, 46" o.c., 2-12	TAN	1				
19-0004	Plastic Pipe Cap (1.50-14ga.)	—	4				
19-0005A	Plastic Pipe Cap (1.90) ALT.	—	3				
19-0033	Post Cap, Aluminum, 3.5" Fits 13 ga	BRO	13				
19-0036	Post Cap, Aluminum, 3.5". Fits 11 ga.	BRO	1				
19-0067	Chain Net Rung, Triple, CNC [ASTM]	BRO	10				
19-1010	Plastic Sleeve for 11 ga	—	1				
19-1210	✓ CNC Steering wheel	TAN	1				
19-1211	Wheel Hub	TAN	1				
19-1212	Wheel Support Spacer	TAN	1				
19-1215	PVC Spacer, Wheel Kit, Molded Walls	—	1				
19-1218	Adapter for Wheel Kit, Molded Walls	—	2				
19-8004	Hinged Clamp Spacer	—	2				
19-9300	Grip spacer "A"	TAN	13				
19-9301	Grip "B"		1				
19-9302	Grip "C"		2				
19-9303	Grip "D"		1				
19-9304	Grip "E"		2				
19-9305	Grip "F"		1				
19-9306	Grip "G"		1				
22-1716/511	3-Rail Slide/48-60 Tan		1				
22-9030/511	Twister Slide Exit Section Tan		1				
22-9031/511	Twister Slide Entry Section Tan		1				
22-9032/511	Twister Slide Straight Section Tan		2				
22-9034/511	Twister Slide Curved Section, Left Tan	TAN	2				
24-3301	Molded Wall Spacer, 1/2"	BRO	8				
25-3301/504	✓ Wall Panel, Center Section, Drilled for Wheel	GRN	1				
25-3302/504	Wall Panel, Center Section, L/O 2 Green	GRN	1				

20002783

Production Manager
ProductionShipping
Coatings

25-4601/504	Wall Extension, Steel Decks, L/O 1 Green	GRN	2			
25-4602/504	Wall Extension, Steel Decks, L/O 2 Green	GRN	2			
6677/511	Stepping Pod 2, Raw Part, As Molded Tan	TAN	1			
30-5020	Transfer Post w/Grips	BRD	1			
31-5203	Deck Support Sleeve	BRD	11			
31-6048	ADA Step Attachment Bracket/HX46	BRD	1			
34-2360	Chain Net/60, CNC Rungs	BRD	1			
34-8872	Mobius Climber/60-72 (Top)	GRN	1			
34-8873	Mobius Climber/72 (Bottom)	GRN	1			
35-3225	Narrow Grab, Tall	TAN	1			
35-4600	ADA Step/24 Handrail, HX46	TAN	2			
35-5275	Transfer/48 Handrail (w/ Base), 46 OC	TAN	2			
36-2176	Curved O/H Loop Ladder	GRN	1			
37-2210	Double Climb Wall Support Bar	GRN	1			
37-5155	Transfer Barrier/HX46	TAN	2			
37-5781	Youth Mobius Grab, 46" o.c.	TAN	1			
38-5100	Pipe Rung, 33" OC	TAN	4			
38-5104	Panel Support Stub 1.16 x 3" Black	BLK	4			
38-5195	Panel Support Stub, HX/46	BLK	4			
38-5299	Drop-in Panel Sup't Stub	BLK	2			
38-5995	Panel Support Stub--1/2" Threads, HX46	BLK	4			
38-6132	Pipe Rung, 46" OC	TAN	4			
39-1730	Twister Slide Exit Support	BRD	1			
39-1731	Twister Mid Support Leg		1			
39-2044	Curved O/H Loop Ladder Support Leg		1			
39-2555	3-Rail/48-60 Slide Exit Support		1			
39-5177	Transfer Base Sup't Leg (ALT)		3			
39-6600	Step Pod2 Base, Low (28" o/a: to 12")		1			
40-0010	Funzone Clamp Back, 3.5" ID		46			
40-0020	Funzone Clamp Front, 3.5" ID		34			
40-0021	Funzone Clamp Front, 3.5" ID Drilled	BRD	14			
40-3151	Crunch Bar	GRN	1			
40-7310	Chain/Moon Anchor	BRD	4			
40-9000	Hinged Clamp Assem. w/SOCKET, 3.5" I.D. [R		2			
50001/8017	Touch Up Paint (Large) Can Chocolate Brown		1			
50003/8017	Touch Up Paint (Brush) Chocolate Brown		1			
50-1120	Vertical Chain Net support pipe--B/F clamps	BRD	1			
673121	Plastic Spacer 1/2" ID, 1" OD, 1/2" Long		4			
673124	Plastic Spacer 1/2" ID, 1" OD, 7/8" Long		2			
673125	Plastic Spacer 1/2" ID, 1" OD, 1" Long		6			
673440	Twister Slide Alignment Bushing: 0.88/1.25/2		23			
70-0095	Galv. Chain, 4/0 x 95 3/8" (C-Net/60)		4			
70-0008	Post extension, 3.5" x 13 ga. x 8" N/S	BRD	1			
70-0124	Post, 3.5" d. x 13 ga, 124"	BRD	1			

20002783

Production Manager
Production

Shipping
Coatings

70-0128	Post, 3.5" d. x 13 ga, 128"	BAO	4				
70-0132	Post, 3.5" d. x 13 ga, 132"		4				
0144	Post, 3.5" d. x 13 ga, 144"		4				
71-9140	Post, 3.5" d. x 11 ga. w/Swedge: o/a 144"	BAO	1				

Barre Falls - Model XXHDW

Part No.	Item Description	Color	Sales Order	Inspection Only	Prod.	Date	Approved
HARDWARE	Hardware Package		1				

Barre Falls - Model XXXINST

Part No.	Item Description	Color	Sales Order	Inspection Only	Prod.	Date	Approved
INSTRUCTIONS	Instruction Packet		1				

Barre Falls - Model XXXXPACKING

Part No.	Item Description	Color	Sales Order	Inspection Only	Prod.	Date	Approved
PACKING LIST	Packing List Enclosed		1				

Timbers, Stakes, Fabric (if any):

NH 11.8.24 19-0005A x 3
Plastic Pipe Cap (1.90) ALT.

NH 11.6.24 19-0033 x 13
Post Cap, Aluminum, 3.5" Fits 13 ga

NH 11.6.24 19-0036
Post Cap, Aluminum, 3.5". Fits 11 ga.

NH 11.8.24 19-0067 x 10
Chain Net Rung, Triple, CNC [ASTM]

NH 11.8.24 19-1010
Plastic Sleeve for 11 ga

NH 11.8.24 19-1210
CNC Steering wheel

NH 11.8.24 19-1211
Wheel Hub

NH 11.8.24 19-1212
Wheel Support Spacer

NH 11.8.24 19-1215
PVC Spacer, Wheel Kit, Molded Walls

NH 11.8.24 19-1218 x 2
Adapter for Wheel Kit, Molded Walls

NH 11.8.24 19-8004 x 2
Hinged Clamp Spacer

NH 11.8.24 19-9300 x 13
Grip spacer "A"

NH 11.8.24 19-9301
Grip "B"

NH 11.8.24 19-9302 x 2
Grip "C"

NH 11.8.24 19-9303
Grip "D"

NH 11.8.24 19-9304 x 2
Grip "E"

NH 11.8.24 19-9305
Grip "F"

NH 11.8.24 19-9306
Grip "G"

~~NH 11.6.24~~ 22-1716/511
3-Rail Slide/48-60 Fan

NH 11.8.24 22-9030/511
Twister Slide Exit Section Fan
green

20002783 **JOB SIGN OFF SHEET**
Barre Falls
Model#7860-02

AGES
YR OLDS

I.D. TAG

NH 11.7.24 16-2362/503 x 2
Square Deck, Steel Brown

NH 11.8.24 16-7099/503
Transfer Base Brown

NH 11.8.24 16-9932/503
Transfer/32 Step Module, Brown

NH 11.7.24 18-1570
Dbl. Climb Wall Upper Panel

NH 11.8.24 18-4446 x 2
ADA Step/24 Side Panel, HX46

NH 11.7.24 18-4461
ADA Step Upper Barrier, Lt, HX46

NH 11.7.24 18-4469
ADA Step Lower Barrier, Lt, HX46

NH 11.7.24 18-6403
Entry Panel, Wide Slide, 46" o.c., 2-12

ADHESION & MIL THK TESTS

NH 11.7.24 16-2633/503
Equilateral Triangle Deck Brown

NH 11.8.24 16-9911/503
Transfer/40 Step Module Brown

NH 11.8.24 17-4601
Infill/12, Steel SQ & EQ-Tri Decks

NH 11.7.24 18-1588
DBL.Climb Wall/60, Lower Panel

NH 11.7.24 18-4460
ADA Step Upper Barrier, Rt, HX46

NH 11.7.24 18-4468
ADA Step Lower Barrier, Rt, HX46

NH 11.8.24 18-4686
Sectional Slide Entry Panel

NH 11.8.24 19-0004 x 4
Plastic Pipe Cap (1.50-14ga.)

NH 11.8.24 22-9031/511
Twister Slide Entry Section **Tan**
green

NH 11.8.24 22-9034/511 x 2
Twister Slide Curved Section, Left **Tan**
green

NH 11.8.24 25-3301/504
Wall Panel, Center Section, Drilled for Wheel
Green

NH 11.8.24 25-4601/504 x 2
Wall Extension, Steel Decks, L/O 1 Green

NH 11.8.24 26-6677/511
Stepping Pod 2, Raw Part, As Molded Tan

NH 11.8.24 31-5203 x 11
Deck Support Sleeve

Rg 10.22.24 34-2360
Chain Net/60, CNC Rungs

NH 11.7.24 34-8873
Mobius Climber/72 (Bottom)

NH 11.8.24 35-4600 x 2
ADA Step/24 Handrail, HX46

NH 11.8.24 36-2176
Curved O/H Loop Ladder

NH 11.8.24 22-9032/511 x 2
Twister Slide Straight Section **Tan**
green

NH 11.8.24 24-3301 x 8
Molded Wall Spacer, 1/2"

NH 11.8.24 25-3302/504
Wall Panel, Center Section, L/O 2 Green

NH 11.8.24 25-4602/504 x 2
Wall Extension, Steel Decks, L/O 2 Green

NH 11.7.24 30-5020
Transfer Post w/Grips

NH 11.6.24 31-6048
ADA Step Attachment Bracket/HX46

NH 11.7.24 34-8872
Mobius Climber/60-72 (Top)

Rg 10.22.24 35-3225
Narrow Grab, Tall

NH 11.8.24 35-5275 x 2
Transfer/48 Handrail (w/ Base), 46 OC

NH 11.6.24 37-2210
Double Climb Wall Support Bar

NH 11.7.24 37-5155 x 2
Transfer Barrier/HX46

Rq 10-22-24 37-5781
Youth Mobius Grab, 46" o.c.

Rq 10-22-24 38-5100 x 4
Pipe Rung, 33" OC

NH 11.8.24 38-5104 x 4
Panel Support Stub 1.16 x 3" Black

NH 11.8.24 38-5195 x 4
Panel Support Stub, HX46

NH 11.8.24 38-5299 x 2
Drop-in Panel Sup't Stub

NH 11.8.24 38-5995 x 4
Panel Support Stub--1/2" Threads, HX46

Rq 10-22-24 38-6132 x 4
Pipe Rung, 46" OC

NH 11.6.24 39-1730
Twister Slide Exit Support

NH 11.7.24 39-1731
Twister Mid Support Leg

NH 11.8.24 39-2044
Curved O/H Loop Ladder Support Leg

NH 11.6.24 39-2555
3-Rail/48-60 Slide Exit Support

NH 11.6.24 39-5177 x 3
Transfer Base Sup't Leg (ALT)

Rq 10-22-24 39-6600
Step Pod2 Base, Low (28" o/a: to 12")

NH 11.11.24 40-0010 x 46
Funzone Clamp Back, 3.5" ID

NH 11.11.24 40-0020 x 34
Funzone Clamp Front, 3.5" ID

NH 11.8.24 40-0021 x 14
Funzone Clamp Front, 3.5" ID Drilled

NH 11.7.24 40-3151
Crunch Bar

Rq 10-22-24 40-7310 x 4
Chain/Moon Anchor

NH 11.8.24 40-9000 x 2
Hinged Clamp Assem. w/SOCKET, 3.5" I.D.
[RCI]

~~NH 11.8.24~~ 50001/8017
Touch Up Paint (Large) Can Chocolate
Brown

~~NH 11.8.24~~ 50003/8017
Touch Up Paint (Brush) Chocolate Brown

~~NH 11.6.24~~ 50-1120
Vertical Chain Net support pipe--B/F clamps

~~NH 11.8.24~~ 673121 x 4
Plastic Spacer 1/2" ID, 1" OD, 1/2" Long

~~NH 11.8.24~~ 673124 x 2
Plastic Spacer 1/2" ID, 1" OD, 7/8" Long

~~NH 11.8.24~~ 673125 x 6
Plastic Spacer 1/2" ID, 1" OD, 1" Long

~~NH 11.8.24~~ 673440 x 12
Twister Slide Alignment Bushing:
0.88/1.25/2.0

~~NH 11.8.24~~ 699095 x 4
Galv. Chain, 4/0 x 95 3/8" (C-Net/60)

~~Rg 10.22.24~~ 70-0008
Post extension, 3.5" x 13 ga. x 8" N/S

~~Rg 10.22.24~~ 70-0124
Post, 3.5" d. x 13 ga, 124"

~~Rg 10.22.24~~ 70-0128 x 4
Post, 3.5" d. x 13 ga, 128"

~~NH 11.7.24~~ 70-0132 x 4
Post, 3.5" d. x 13 ga, 132"

~~Rg 10.22.24~~ 70-0144 x 4
Post, 3.5" d. x 13 ga, 144"

~~Rg 10.22.24~~ 71-9140
Post, 3.5" d. x 11 ga. w/Swedge: o/a 144"

JOB SIGN OFF SHEET
20002983 Barre Falls
Model#XXHDW
XXXXHDW

AGES
YR OLDS

I.D. TAG

ADHESION & MIL THK TESTS

11-8-24
HARDWARE
Hardware Package

20002783
JOB SIGN OFF SHEET
Barre Falls
Model#XXXINST

AGES
YR OLDS

I.D. TAG

ADHESION & MIL THK TESTS

11-8-24
INSTRUCTIONS
Instruction Packet

20002783
JOB SIGN OFF SHEET
Barre Falls
Model#XXXXPACKING
XXPACKING

AGES
YR OLDS

I.D. TAG

ADHESION & MIL THK TESTS

11-8-24
PACKING LIST
Packing List Enclosed

Component Count on BOM using Model

Barre Falls
20002783

Parent Part #: 7860-02 - Ages 5-12 Playsystem

Part #	Qty Per	Ext Qty	Description
09430 (S)	1	1	Infill Panel/12, Steel Decks
17-4601 (A)	1	1	Infill/12, Steel SQ & EQ-Tri Decks
702054 (S)	1	1	Infill/12 Hardware Kit, SQ & EQ
600326 (B)	4	4	Nylon Lock Nut 3/8 Yellow Zinc
600438 (B)	8	8	Flat Washer 3/8"
606306 (B)	4	4	BHAB 3/8-16 x 1-1/4
702054A (S)	1	1	Infill/12 Hardware Kit, SQ & EQT--Alternate
600326 (B)	4	4	Nylon Lock Nut 3/8 Yellow Zinc
600412 (B)	4	4	Lock Washer 3/8"
600438 (B)	8	8	Flat Washer 3/8"
606307 (B)	4	4	BHAB 3/8-16 x 1-1/2

Component Count on BOM using Model

Barre Falls
20002783

Parent Part #: 7860-02 - Ages 5-12 Playsystem

Part #	Qty Per	Ext Qty	Description
7236 (S)	1	1	Mobius Climber/72, 46 OC
34-8872 (A)	1	1	Mobius Climber/60-72 [Top]
34-8873 (A)	1	1	Mobius Climber/72 [Bottom]
35-3225 (A)	1	1	Narrow Grab, Tall
37-5781 (A)	1	1	Youth Mobius Grab, 46" o.c.
40-9000 (A)	2	2	Hinged Clamp Assem. w/SOCKET, 3.5" I.D. [RCI]
703042 (S)	1	2	RCI Hinged Clamp Hdw. Kit, 3.5" [40-9000]
19-8004 (A)	1	2	Hinged Clamp Spacer
600202 (B)	1	2	Set Screw 3/8-16 x 3/8 w/Threadlock
600326 (B)	1	2	Nylon Lock Nut 3/8 Yellow Zinc
600438 (B)	2	4	Flat Washer 3/8"
600601 (B)	2	4	Expansion Pin 1/4" x 3/4"
606308 (B)	1	2	BHAB 3/8-16 x 1-3/4
703067 (S)	1	1	Mobius Climber Assembly Hdw. Kit
600212 (B)	2	2	Set Screw 3/8 x 1/2 (THREADLOCK by INSTALLER)
600601 (B)	4	4	Expansion Pin 1/4" x 3/4"

Component Count on BOM using Model

Barre Falls
20002783

Parent Part #: 7860-02 - Ages 5-12 Playsystem

Part #	Qty Per	Ext Qty	Description
57234 (S)	1	1	Molded Wall, 46" OC, L/O 2
25-3302 (A)	1	1	Wall Panel, Center Section, L/O 2
25-3300 (B)	1	1	Wall Panel, Center
25-4602 (A)	2	2	Wall Extension, Steel Decks, L/O 2
25-4600 (B)	1	2	Wall Panel Extension, Steel Decks
38-6132 (A)	2	2	Pipe Rung, 46" OC, 1.16 D x 47.5 x 14 ga
703208 (S)	1	1	Molded Wall/Panel Spacer Pack
24-3301 (A)	4	4	Molded Wall Spacer, 1/2"
600601 (B)	4	4	Expansion Pin 1/4" x 3/4"

Component Count on BOM using Model

Barre Fall
20002783

Parent Part #: 7860-02 - Ages 5-12 Playsystem

Part #	Qty Per	Ext Qty	Description
557134 (S)	1	1	Molded Wall w/Wheel, 46" OC
25-3301 (A)	1	1	Wall Panel, Drilled for Wheel
25-3300 (B)	1	1	Wall Panel, Center
25-4601 (A)	2	2	Wall Extension, Steel Decks, L/O 1
25-4600 (B)	1	2	Wall Panel Extension, Steel Decks
38-6132 (A)	2	2	Pipe Rung, 46" OC, 1.16 D x 47.5 x 14 ga
703103 (S)	1	1	Wheel Wall Hdw. Kit, Molded Walls
19-1210 (A)	1	1	CNC Steering Wheel
19-1211 (A)	1	1	Wheel Hub
19-1212 (A)	1	1	Wheel Support Spacer
19-1215 (A)	1	1	PVC Spacer, Wheel Kit, Molded Walls
19-0065 (B)	0.1 IN	0.1 IN	PVC Tubing, 1 1/2" OD Sched 40 (OBS)
19-1218 (A)	2	2	Adapter for Wheel Kit, Molded Walls
600358 (B)	1	1	Nylon Jam Nut 1/2
600440 (B)	2	2	Flat Washer 1/2"
606517 (B)	1	1	BHAB 1/2-13 x 5
703208 (S)	1	1	Molded Wall/Panel Spacer Pack
24-3301 (A)	4	4	Molded Wall Spacer, 1/2"
600601 (B)	4	4	Expansion Pin 1/4" x 3/4"

Component Count on BOM using Model

Barre Falls
20002783

Parent Part #: 7860-02 - Ages 5-12 Playsystem

Part #	Qty Per	Ext Qty	Description
51110 (S)	1	1	Stepping Pod/Seat, Max 8"
26-6677 (B)	1	1	Stepping Pod 2, Raw Part, As Molded
39-6600 (A)	1	1	Step Pod2 Base, Low (28" o/a: to 12")
39-6600-2 (A)	1	1	Pod/Slide Exit Support Plate
703112 (S)	1	1	Stepping Pod [RCI] Hardware Kit
600412 (B)	4	4	Lock Washer 3/8"
600438 (B)	4	4	Flat Washer 3/8"
606305 (B)	4	4	BHAB 3/8-16 x 1

Component Count on BOM using Model

Barre Falls
20002783

Parent Part #: 7860-02 - Ages 5-12 Playsystem

Part #	Qty Per	Ext Qty	Description
104734 (S)	1	1	Transfer/48 w/Base, 46 OC, 2-12
16-7099 (B)	1	1	Transfer Base
704033 (S)	1	1	Transfer Base-to-Step Hdw. Kit
600326 (B)	3	3	Nylon Lock Nut 3/8 Yellow Zinc
600412 (B)	3	3	Lock Washer 3/8"
600438 (B)	6	6	Flat Washer 3/8"
606305 (B)	3	3	BHAB 3/8-16 x 1
16-9911 (B)	1	1	Transfer/40 Step Module
19-0005 (A)	3	3	Plastic Pipe Cap (1.90-13ga.)
19-0005A (A)	3	3	Plastic Pipe Cap (1.90) ALT.
30-5020 (A)	1	1	Transfer Post w/Grips
703033 (S)	1	1	Transfer Legs & Post Hdw. Kit
600326 (B)	8	8	Nylon Lock Nut 3/8 Yellow Zinc
600412 (B)	8	8	Lock Washer 3/8"
600438 (B)	8	8	Flat Washer 3/8"
606312 (B)	6	6	BHAB 3/8-16 x 2-3/4
606315 (B)	2	2	BHAB 3/8-16 x 3-1/2
703555 (S)	1	1	Transfer Leg/Post Hdw. Kit (ALT)
600352 (B)	5	5	Nylon Lock Nut 5/16
600442 (B)	11	11	Flat Washer 5/16"
606205 (B)	3	3	BHAB 5/16-18 x 1
606212 (B)	3	3	BHAB 5/16-18 x 2-3/4
606215 (B)	2	2	BHAB 5/16-18 x 3-1/2
35-5275 (A)	2	2	Transfer/48 Handrail (w/ Base), 46 OC
31-5165 (A)	1	2	Transfer Tab, 3/16" x 1 1/2" x 5"
702137 (S)	1	2	Trans. Handrail Hdw. Kit, 46" OC (w/Base)
19-0004 (A)	2	4	Plastic Pipe Cap (1.50-14ga.)
600326 (B)	2	4	Nylon Lock Nut 3/8 Yellow Zinc
600367 (B)	2	4	HXJC 3/8
600413 (B)	2	4	Lock Washer 1/2"
600438 (B)	4	8	Flat Washer 3/8"
600440 (B)	2	4	Flat Washer 1/2"
606305 (B)	2	4	BHAB 3/8-16 x 1
606306 (B)	2	4	BHAB 3/8-16 x 1-1/4
37-5155 (A)	2	2	Transfer Barrier, HX/46
31-5165 (A)	1	2	Transfer Tab, 3/16" x 1 1/2" x 5"
39-5157 (A)	3	3	Transfer Base Support Leg
39-5177 (A)	3	3	Transfer Base Sup't Leg (ALT)
702130 (S)	1	1	Transfer Step Att't Hdw. Kit, Steel Decks
600326 (B)	2	2	Nylon Lock Nut 3/8 Yellow Zinc
600352 (B)	2	2	Nylon Lock Nut 5/16
600412 (B)	2	2	Lock Washer 3/8"
600438 (B)	4	4	Flat Washer 3/8"

Component Count on BOM using Model

Barre Falls
20002783

Parent Part #: 7860-02 - Ages 5-12 Playsystem

Part #	Qty Per	Ext Qty	Description
600442 (B)	4	4	Flat Washer 5/16"
606203 (B)	2	2	BHAB 5/16-18 x 3/4
606305 (B)	2	2	BHAB 3/8-16 x 1
702130(A) (S)	1	1	Transfer Att't Hdw. Kit, Steel Decks (ALT.)
600326 (B)	2	2	Nylon Lock Nut 3/8 Yellow Zinc
600352 (B)	2	2	Nylon Lock Nut 5/16
600404 (B)	2	2	Lock Washer 5/16", Internal Tooth
600442 (B)	4	4	Flat Washer 5/16"
600452 (B)	4	4	Flat Washer, SAE 3/8"
606203 (B)	2	2	BHAB 5/16-18 x 3/4
606305 (B)	2	2	BHAB 3/8-16 x 1

10/04/24
4:56:48PM

Component Count on BOM using Model

Parent Part #: 7860-02 - Ages 5-12 Playsystem
Mfg Qty: 1.00

Barre Falls
20002783

Part #	Qty Per	Ext Qty	Description
10266036 (S)	1	1	3-Rail Slide/60, 46" OC, Steel
18-6403 (A)	1	1	Entry Panel, Wide Slide, 46" o.c., 2-12
22-1716 (B)	1	1	3-Rail Slide/44-64
600375 (A)	5	5	Insert Nut, 3/8", shallow [Installed by KSP]
600371 (B)	1	5	Insert Nut 3/8, shallow
39-2555 (A)	1	1	3-Rail/48-60 Slide Exit Support
703031 (S)	1	1	Slide Exit Support Hdw, 2-bolt
600412 (B)	2	2	Lock Washer 3/8"
600438 (B)	2	2	Flat Washer 3/8"
606305 (B)	2	2	BHAB 3/8-16 x 1
701004 (S)	1	1	Panel Hdw. Kit, 4-clamp, 38-5104
38-5104/501 (A)	4	4	Panel Support Stub, 1.16 x 3" [BLACK]
600412 (B)	4	4	Lock Washer 3/8"
600438 (B)	4	4	Flat Washer 3/8"
606307 (B)	4	4	BHAB 3/8-16 x 1-1/2
702120 (S)	1	1	3-Rail/60 Attachment Hdw. Kit, Steel Decks
600370 (B)	4	4	Insert Nut 3/8, deep
600412 (B)	4	4	Lock Washer 3/8"
600438 (B)	4	4	Flat Washer 3/8"
606307 (B)	4	4	BHAB 3/8-16 x 1-1/2

Component Count on BOM using Model

Barre Falls
20002783

Parent Part #: 7860-02 - Ages 5-12 Playsystem

Part #	Qty Per	Ext Qty	Description
1 097134 (S)	1	1	Twister Slide/72 LT, Steel Decks
18-4686 (A)	1	1	Twister Entry Panel, 46" OC, 2-12
702004 (S)	1	1	Panel Hdw. Kit, 4-clamp, Steel, 38-5195
38-5195/501 (A)	4	4	Panel Support Stub, HX/46, Black
600412 (B)	4	4	Lock Washer 3/8"
600438 (B)	4	4	Flat Washer 3/8"
606307 (B)	4	4	BHAB 3/8-16 x 1-1/2
22-9030 (B)	1	1	Twister Slide Exit Section
22-9031 (B)	1	1	Twister Slide Entry Section
22-9032 (B)	2	2	Twister Slide Straight Section
22-9034 (B)	2	2	Twister Slide Curved Section, Left
39-1730 (A)	1	1	Twister Slide Exit Support
703151 (S)	1	1	Twister Slide Exit Support Hdw. Kit
600124 (B)	4	4	HHB 3/8-16 x 1-1/4
600370 (B)	4	4	Insert Nut 3/8, deep
600412 (B)	4	4	Lock Washer 3/8"
600438 (B)	4	4	Flat Washer 3/8"
39-1731 (A)	1	1	Twister Slide Mid Support Leg
39-1731-1 (A)	1	1	Twister Slide Mid Support Plate
703152 (S)	1	1	Twister Slide: Chute Cx-Mid-Support Hdw. Kit
600138 (B)	2	2	HHB 3/8-16 x 3-3/4
600356 (B)	2	2	Nylon Jam Nut 3/8
600438 (B)	4	4	Flat Washer 3/8"
702004 (S)	1	1	Panel Hdw. Kit, 4-clamp, Steel, 38-5195
38-5195/501 (A)	4	4	Panel Support Stub, HX/46, Black
600412 (B)	4	4	Lock Washer 3/8"
600438 (B)	4	4	Flat Washer 3/8"
606307 (B)	4	4	BHAB 3/8-16 x 1-1/2
702150 (S)	1	1	Twister Slide Att't Hdw. Kit, 46" OC [Steel]
600125 (B)	2	2	HHB 3/8-16 x 2
600326 (B)	2	2	Nylon Lock Nut 3/8 Yellow Zinc
600412 (B)	2	2	Lock Washer 3/8"
600438 (B)	4	4	Flat Washer 3/8"
703153 (S)	1	1	Twister Slide/72: Assembly Hdw. Kit: DNS
600138 (B)	20	20	HHB 3/8-16 x 3-3/4
600326 (B)	20	20	Nylon Lock Nut 3/8 Yellow Zinc
600412 (B)	20	20	Lock Washer 3/8"
600438 (B)	40	40	Flat Washer 3/8"
673440 (A)	12	12	Twister Slide Alignment Bushing: 0.88/1.25/2.0

Component Count on BOM using Model

Barre Fall
20002783

Parent Part #: 7860-02 - Ages 5-12 Playsystem

Part #	Qty Per	Ext Qty	Description
020009 (S)	1	1	Vertical Chain Net [CNC]--B/F Clamps
34-2360 (A)	1	1	Chain Net/60, CNC Rungs
19-0067 (A)	10	10	Chain Net Rung, Triple, CNC [ASTM]
699095 (A)	4	4	Galv. Chain, 4/0 x 95 3/8" (C-Net/60)
42-2917 (B)	8.0 FT	31.8 FT	4/0 Galv. Chain
703633 (S)	5	5	Hdw. for CNC Triple Chain Net Rung [DNS]
600366 (B)	4	20	Flat Head Cap Nut 5/16 [FHCN]
600404 (B)	4	20	Lock Washer 5/16", Internal Tooth
600451 (B)	4	20	Flat Washer, SAE 5/16"
606206 (B)	4	20	BHAB 5/16-18 x 1-1/4
607110 (B)	1	5	Thread Lock, 2 gm.
40-7310 (A)	4	4	Chain/Moon Anchor [Replaces 200290]
50-1120 (A)	1	1	Vertical Chain Net support pipe--B/F clamps
703320 (S)	1	1	Vertical Chain Net Hardware Kit
600352 (B)	4	4	Nylon Lock Nut 5/16
600409 (B)	4	4	Lock Washer 5/16"
600442 (B)	8	8	Flat Washer 5/16"
606206 (B)	4	4	BHAB 5/16-18 x 1-1/4
607120 (B)	1	1	Security Allen Wrench, 5/16"
607210 (B)	4	4	Shackle, 5/16", with 3/8 Pin Bolt

