



### U.S. ARMY CORPS OF ENGINEERS

#### Scope and Authority

- The U.S. Army Corps of Engineers (USACE) can partner with a non-federal sponsor (sponsor) to plan and construct projects for prevention or mitigation of damages caused by Federal navigation work.
- Applies to both publicly and privately owned shores located along the coastal shorelines of the United States.
- Authority is provided by Section 111 of the River and Harbor Act of 1968, as amended, also referred to as Section 111 under the Continuing Authorities Program.

#### Project Development Process

- **Feasibility Study** - Upon receipt of a written Letter of Intent (LOI) from a potential sponsor and when funding is available, USACE initiates a Federal Interest Determination, at federal expense, to determine if a potential project meets program requirements and federal participation is justified. If a federal interest is verified, a feasibility study will be advanced to identify and comprehensively evaluate alternatives and recommend a plan for implementation. If the feasibility study cost exceeds \$100,000, USACE and sponsor sign a Feasibility Cost Share Agreement and a project management plan that describes the study cost share arrangement, study scope, schedule, and study cost estimate (See Project Costs).
- **Design and Construction** - A project is approved for construction if the detailed feasibility study determines it is technically feasible, environmentally acceptable, and economically justified. Before engineering design and construction can begin, USACE and sponsor negotiate and sign a Project Partnership Agreement that describes the cost share arrangement and operations and maintenance responsibilities (See Project Costs).

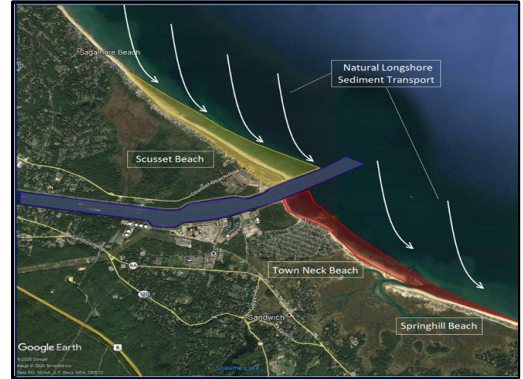
#### Project Costs

The maximum federal expenditure per project is \$15 million, including design and construction costs.

Feasibility Study	<ul style="list-style-type: none"><li>• The study is initiated with up to \$100,000 in federal funds.</li><li>• Costs exceeding \$100,000 are cost shared in the same proportion as the cost sharing applicable to construction of the project causing damage.</li></ul>
Design and Construction	<ul style="list-style-type: none"><li>• Costs are shared in the same proportion as the cost sharing applicable to construction of the project causing damage.</li><li>• Sponsor must provide all lands, easements, rights-of-way, and relocations (LERRs), needed for project construction and maintenance.</li></ul>
Operation and Maintenance	<ul style="list-style-type: none"><li>• Operation and maintenance of the GNF are a Federal responsibility.</li></ul>

#### How to Request a Project

A template LOI to request a study under the Continuing Authorities Program is available on the USACE Planning web site.



### U.S. ARMY CORPS OF ENGINEERS

Questions? Contact your local USACE District:

<https://usace.maps.arcgis.com/apps/webappviewer/index.html?id=7344e62432694199af7790aa47a32fdd>

