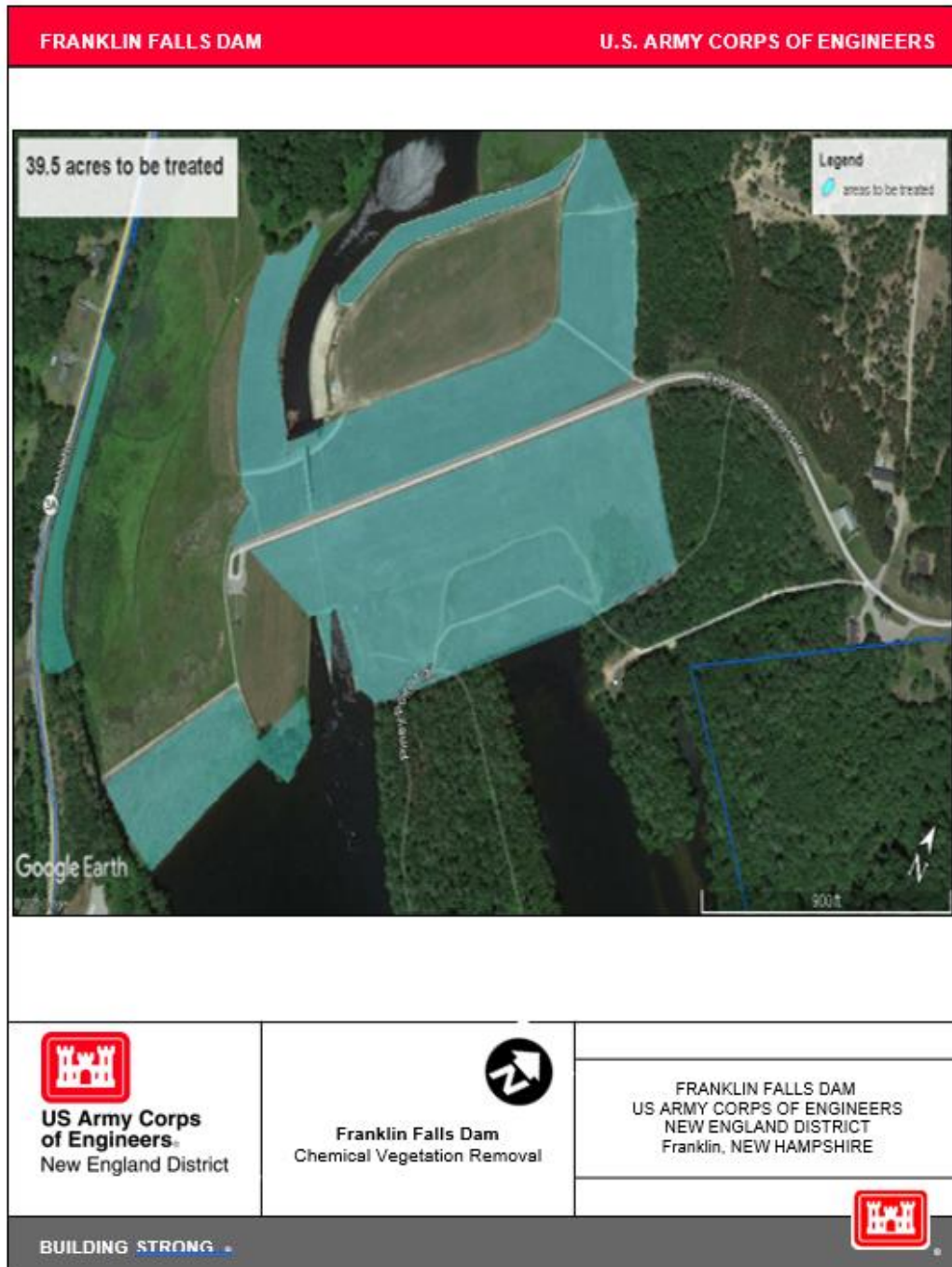


**CHEMICAL VEGETATION CONTROL SERVICES  
U.S. ARMY CORPS OF ENGINEERS  
FRANKLIN FALLS AND BLACKWATER DAMS  
PERFORMANCE WORK STATEMENT**

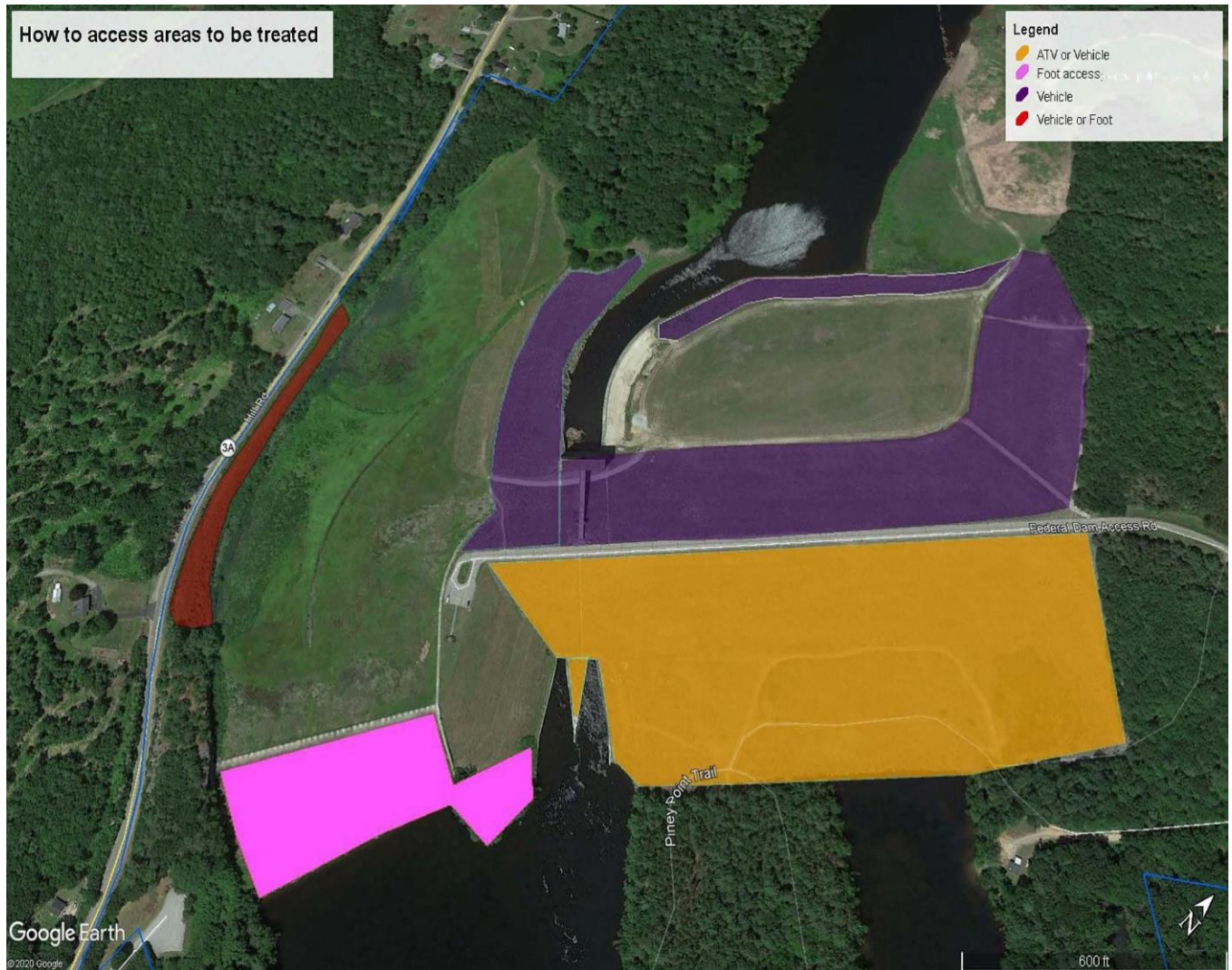
**Informational Map**



**Informational Map 1: Franklin Falls Dam**

**CHEMICAL VEGETATION CONTROL SERVICES  
U.S. ARMY CORPS OF ENGINEERS  
FRANKLIN FALLS AND BLACKWATER DAMS  
PERFORMANCE WORK STATEMENT**

**Informational Map**



**Informational Map 2:** How to access areas to be treated at the Franklin Falls Dam Area.

**PLEASE NOTE:** The pink area is only accessible by foot. The Contractor must provide their own means of access and egress to this area.



**CHEMICAL VEGETATION CONTROL SERVICES  
U.S. ARMY CORPS OF ENGINEERS  
FRANKLIN FALLS AND BLACKWATER DAMS  
PERFORMANCE WORK STATEMENT**

**Informational Map**

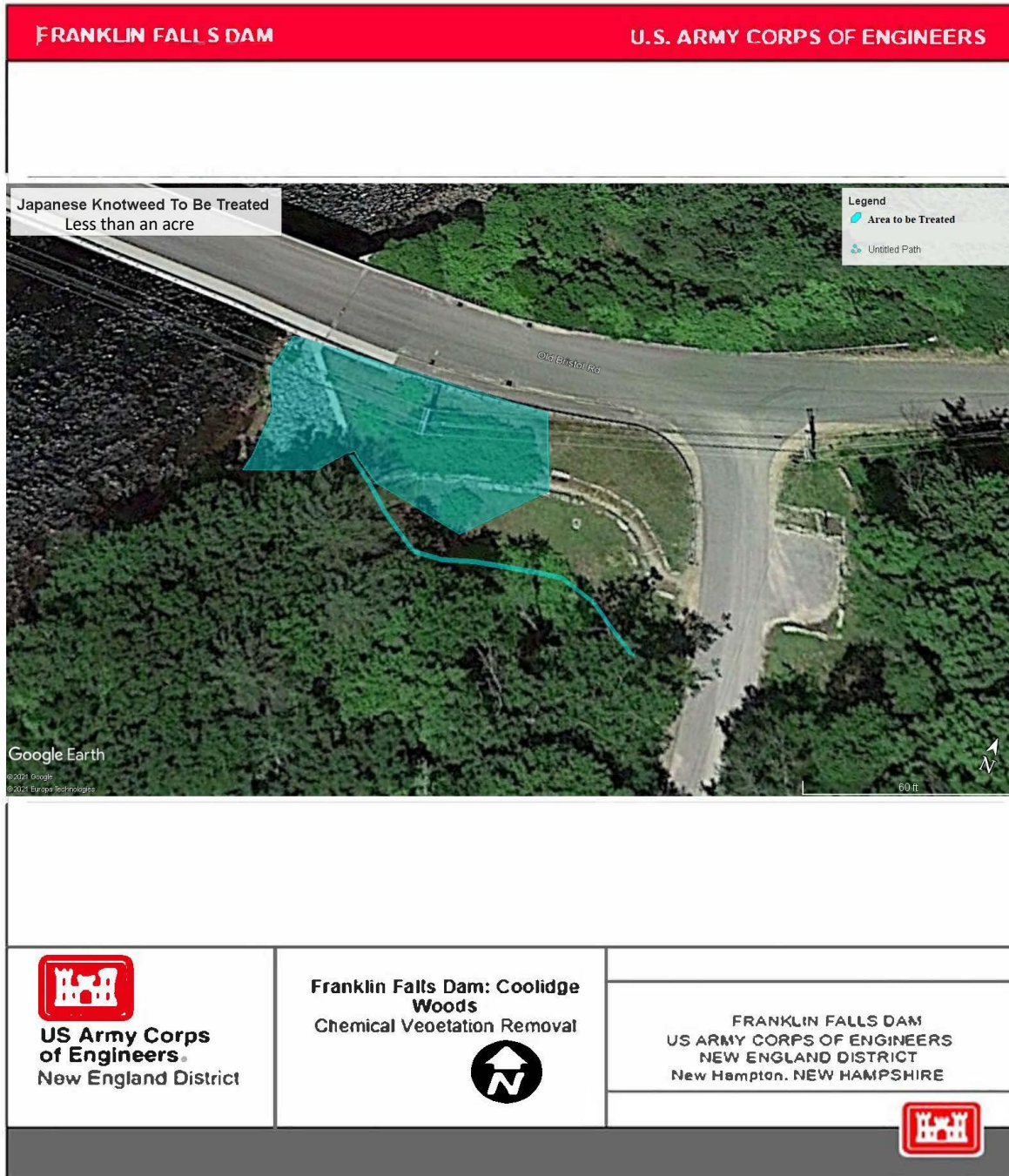


**Informational Map 3:** Overlook Recreation Area, Access from Route 3 in Franklin NH.

Woody Vegetation to be sprayed (Sumac).

**CHEMICAL VEGETATION CONTROL SERVICES  
U.S. ARMY CORPS OF ENGINEERS  
FRANKLIN FALLS AND BLACKWATER DAMS  
PERFORMANCE WORK STATEMENT**

**Informational Map**



**Informational Map 4:** Coolidge Woods Recreation Area. Access from town-maintained road, Coolidge Woods Road. Japanese Knotweed to be treated.



**CHEMICAL VEGETATION CONTROL SERVICES  
U.S. ARMY CORPS OF ENGINEERS  
FRANKLIN FALLS AND BLACKWATER DAMS  
PERFORMANCE WORK STATEMENT**

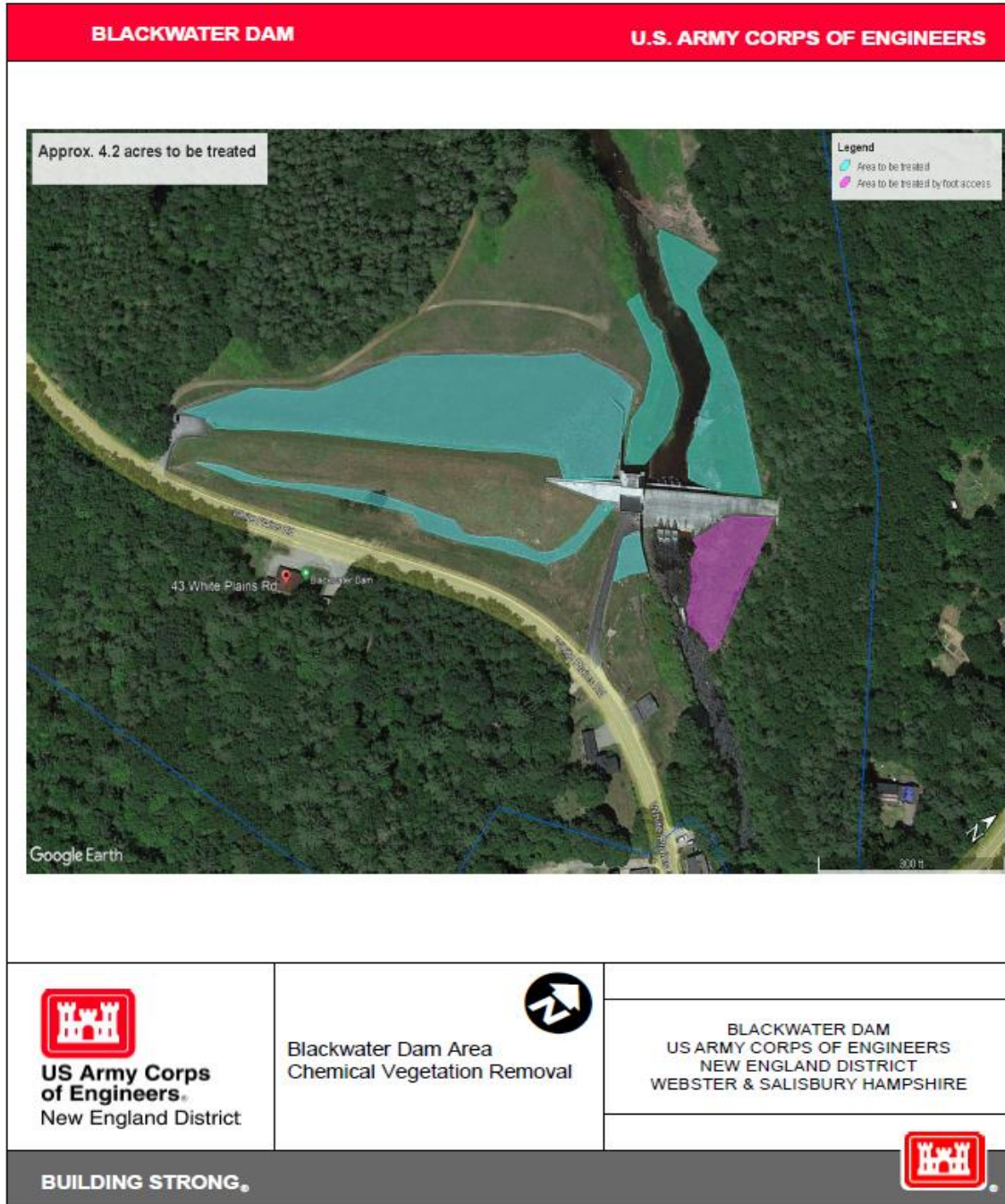
**Informational Photo**



**Informational Photo 1:** Reference View of Spillway at Franklin Falls Dam.

**CHEMICAL VEGETATION CONTROL SERVICES  
U.S. ARMY CORPS OF ENGINEERS  
FRANKLIN FALLS AND BLACKWATER DAMS  
PERFORMANCE WORK STATEMENT**

**Informational Map**



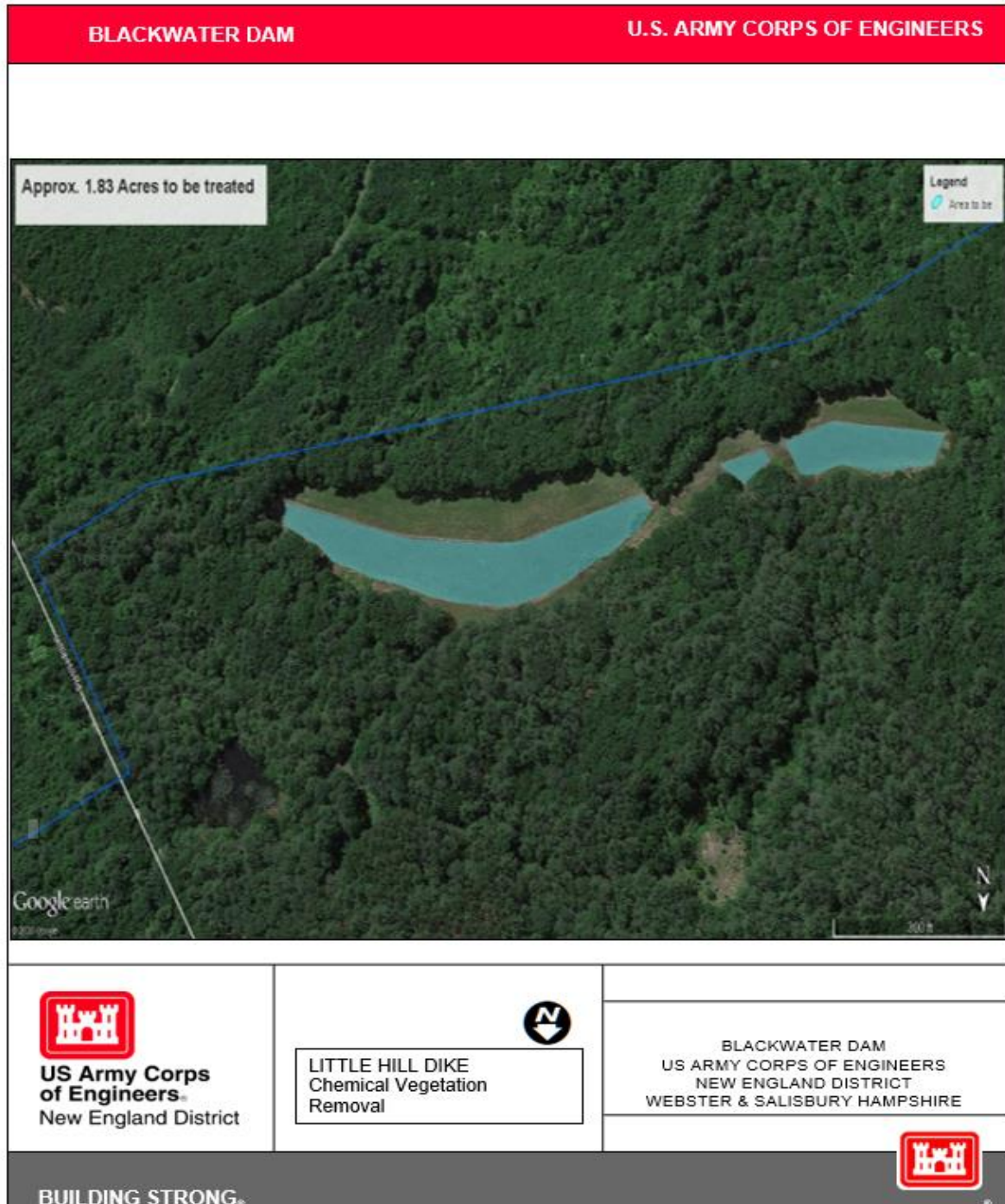
**Informational Map 5: Blackwater Dam**

**PLEASE NOTE:** The pink area is only accessible by foot. The Contractor must provide their own means of access and egress to this area.



**CHEMICAL VEGETATION CONTROL SERVICES  
U.S. ARMY CORPS OF ENGINEERS  
FRANKLIN FALLS AND BLACKWATER DAMS  
PERFORMANCE WORK STATEMENT**

**Informational Map**



**Informational Map 6: Little Hill Dike**