

**Figure 1**

Hopkinton Dike H-2 Area.  
Approx. 5.60 Area  
Mowing acres

APRIL 2026



**US Army Corps  
of Engineers®**

New England District

**Legend**

-  HopEv\_Property Boundary
-  Area Mowing
-  Slope Mowing
-  Spillway Mowing





**US Army Corps of Engineers®**

New England District

**Figure 2**

Hopkinton Dike H-3 Area.  
Approx. 16.55 Area  
Mowing acres

APRIL 2026

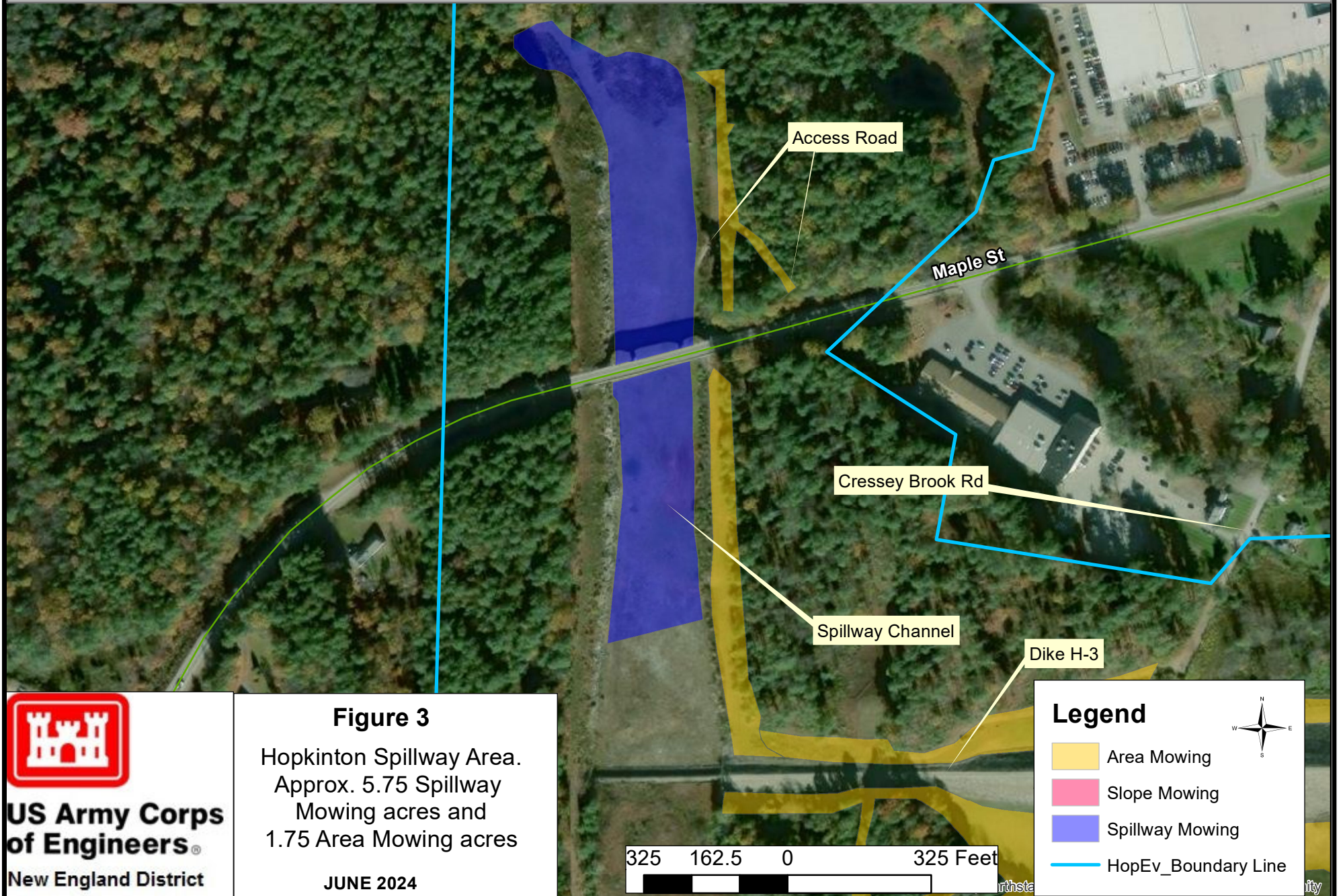
490 245 0 490 Feet



**Legend**

-  HopEv\_Property Boundary
-  Area Mowing
-  Slope Mowing
-  Spillway Mowing





**Figure 3**

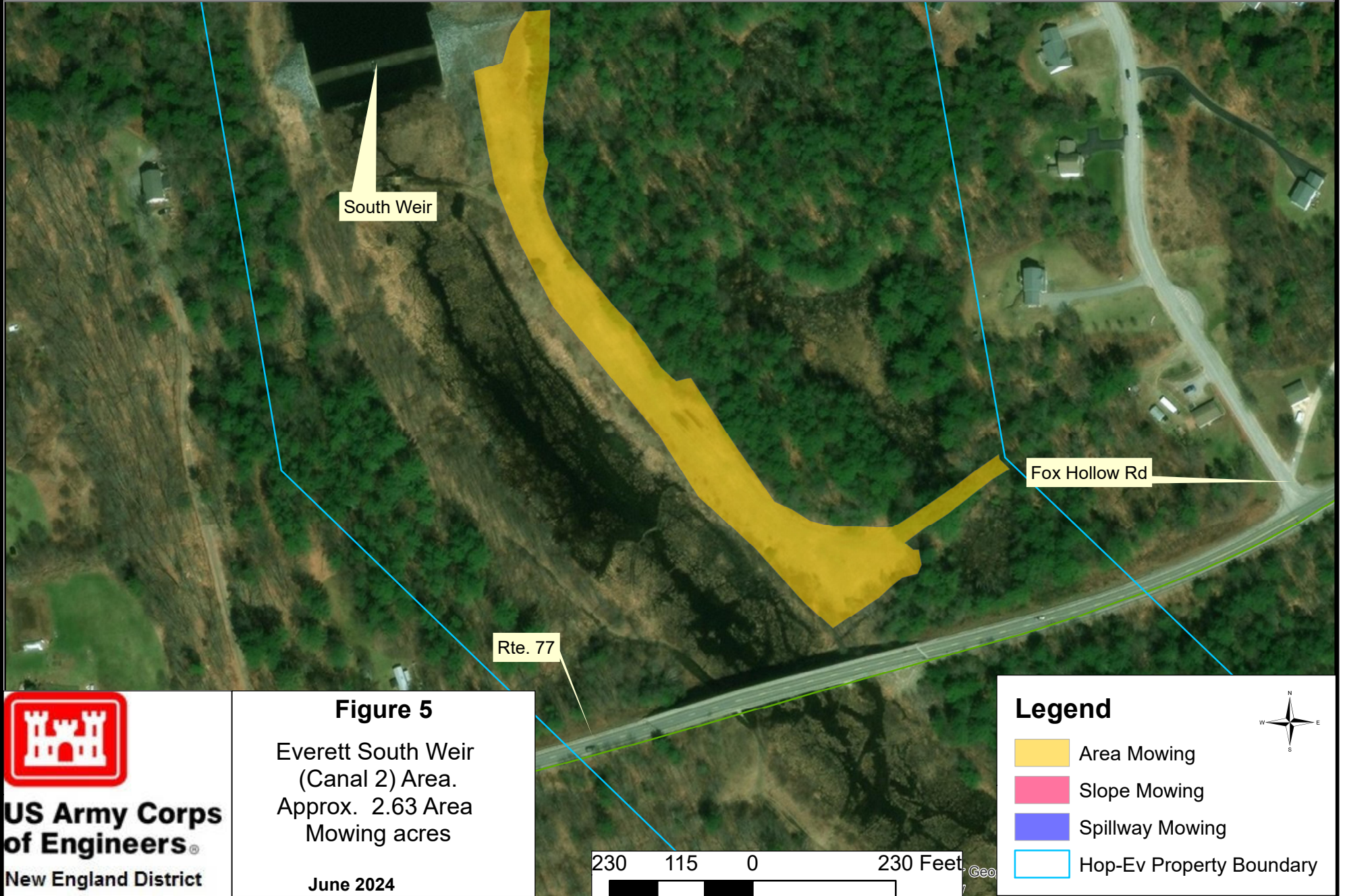
Hopkinton Spillway Area.  
Approx. 5.75 Spillway  
Mowing acres and  
1.75 Area Mowing acres

JUNE 2024



**US Army Corps  
of Engineers®**

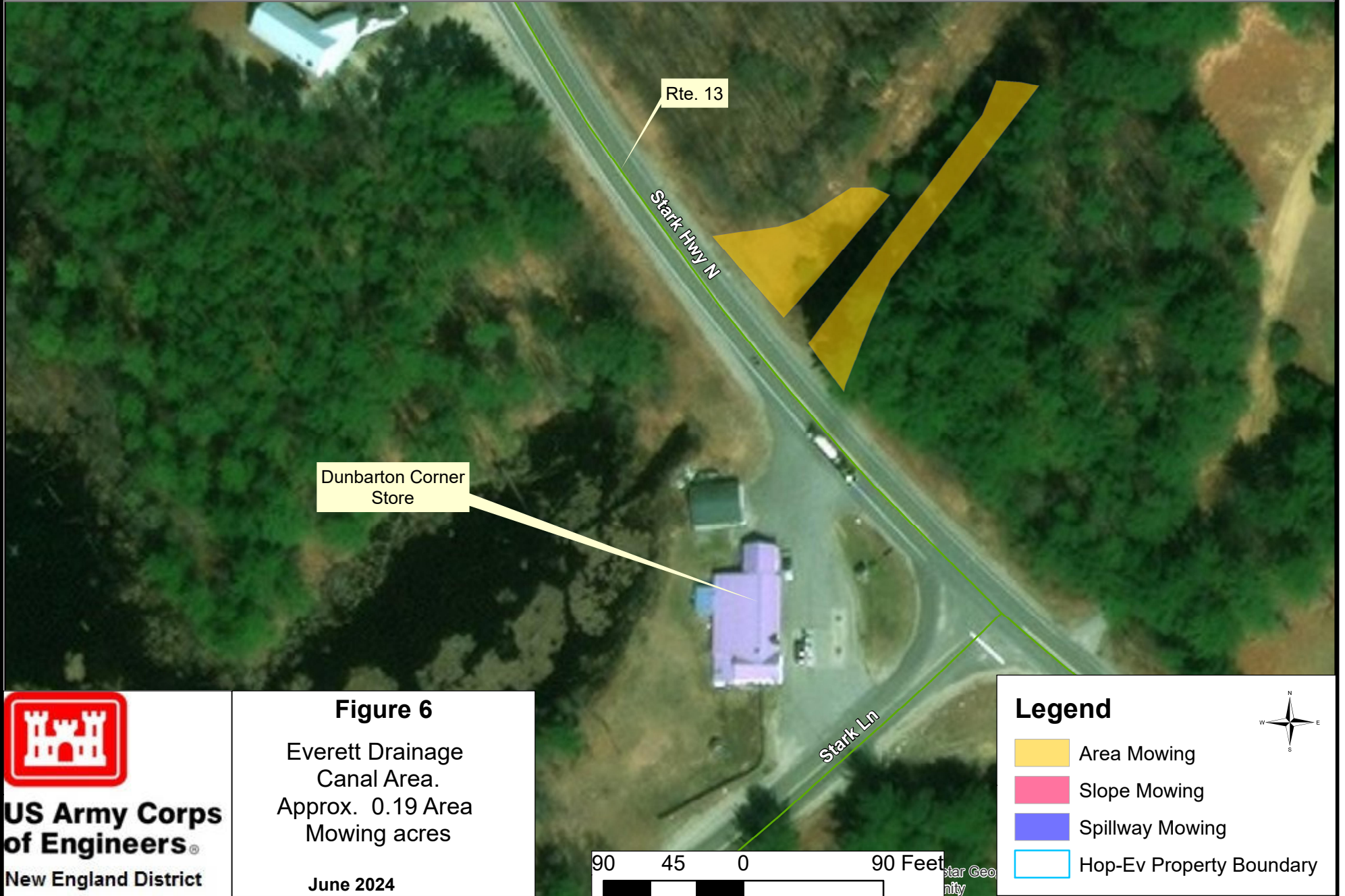
New England District



**Figure 5**

Everett South Weir  
(Canal 2) Area.  
Approx. 2.63 Area  
Mowing acres

June 2024



**Figure 6**

Everett Drainage Canal Area.  
Approx. 0.19 Area Mowing acres

June 2024



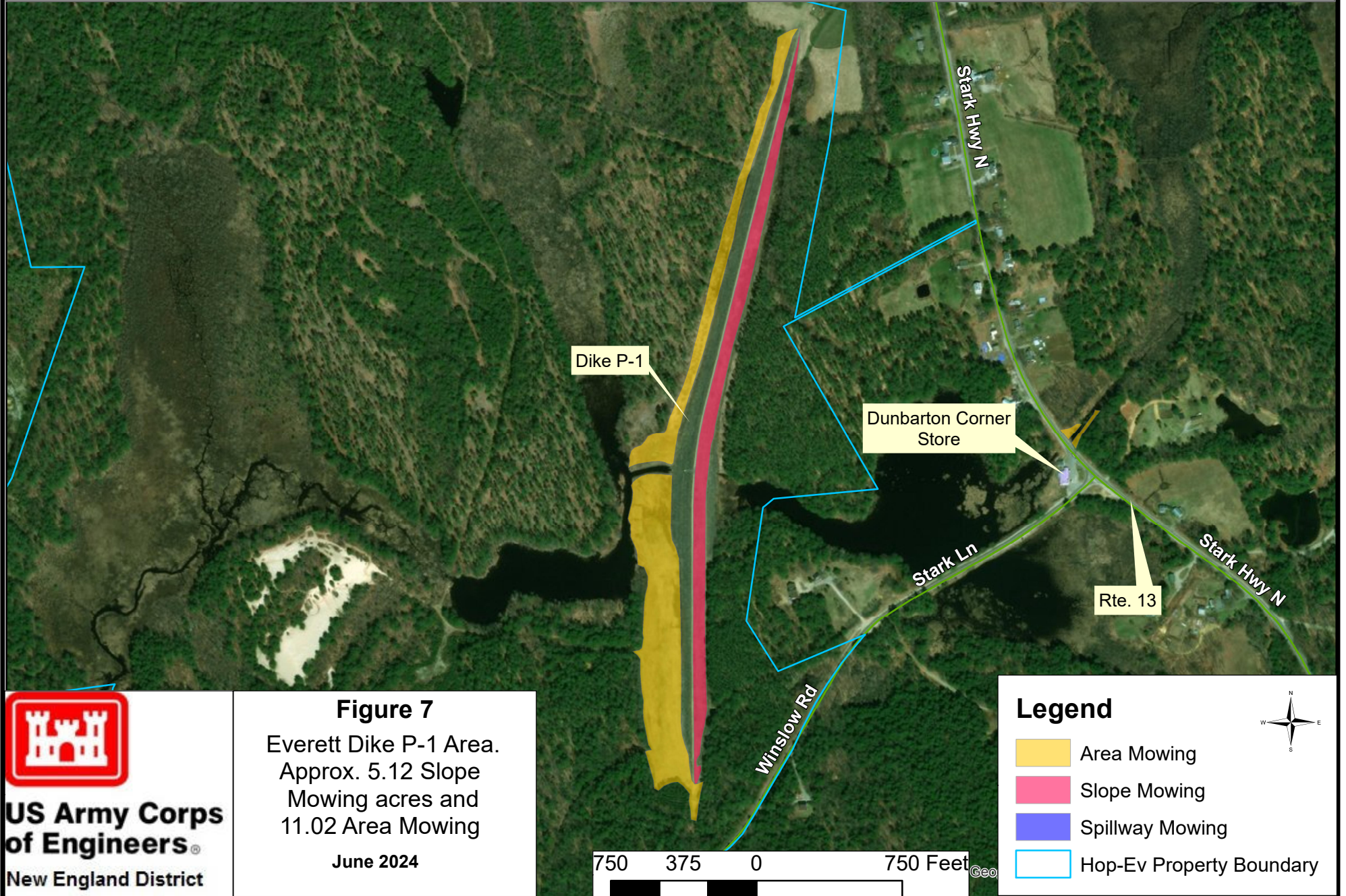
**US Army Corps of Engineers**®

New England District

**Legend**

- Area Mowing
- Slope Mowing
- Spillway Mowing
- Hop-Ev Property Boundary





**US Army Corps of Engineers**  
New England District

**Figure 7**  
Everett Dike P-1 Area.  
Approx. 5.12 Slope  
Mowing acres and  
11.02 Area Mowing

June 2024



**US Army Corps  
of Engineers**®

New England District

**Figure 8**

Everett Dike P-2 Area.  
Approx. 2.40 Slope  
Mowing acres

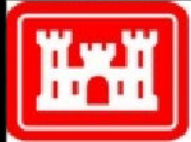
June 2024



**Legend**

- Area Mowing
- Slope Mowing
- Spillway Mowing
- Hop-Ev Property Boundary





**US Army Corps  
of Engineers®**  
New England District

**Figure 9**  
Everett Office, Outflow,  
and Spillway Areas.  
Approx. 1.86 Spillway  
Mowing acres and  
5.27 Area Mowing acres

APRIL 2026

325 162.5 0 325 Feet

**Legend**

- HopEv\_Property Boundary
- Area Mowing
- Slope Mowing
- Spillway Mowing

