

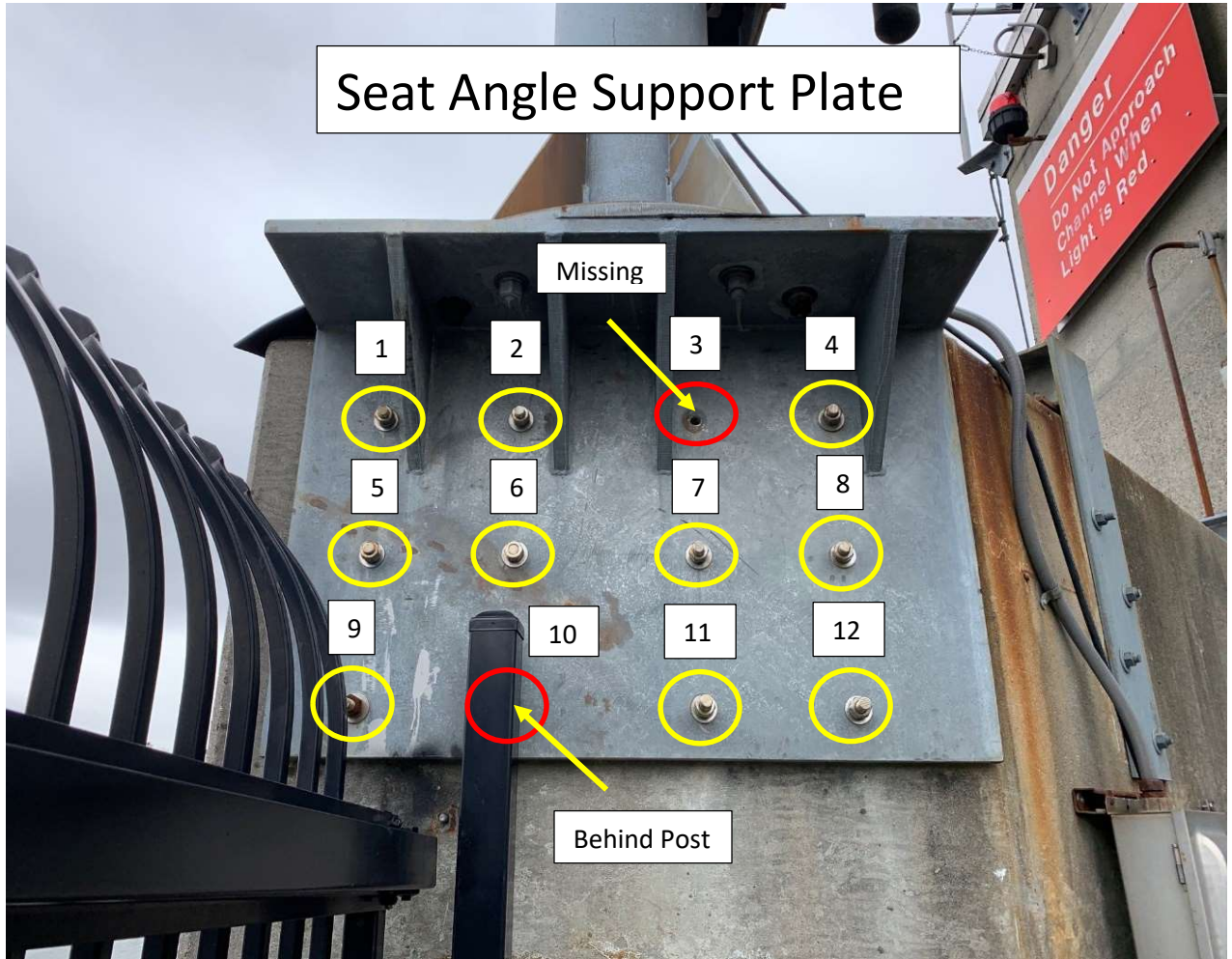
**BOAT HOIST SEAT ANGLE SUPPORT PLATE REPAIRS
U.S. ARMY CORPS OF ENGINEERS
STAMFORD HURRICANE BARRIER
STAMFORD, CT**

Photo #1: Boat Hoist Overview



**BOAT HOIST SEAT ANGLE SUPPORT PLATE REPAIRS
U.S. ARMY CORPS OF ENGINEERS
STAMFORD HURRICANE BARRIER
STAMFORD, CT**

Photo #2: Seat Angle Support Plate Front (12 Concrete Anchors- ITEM 1-A)

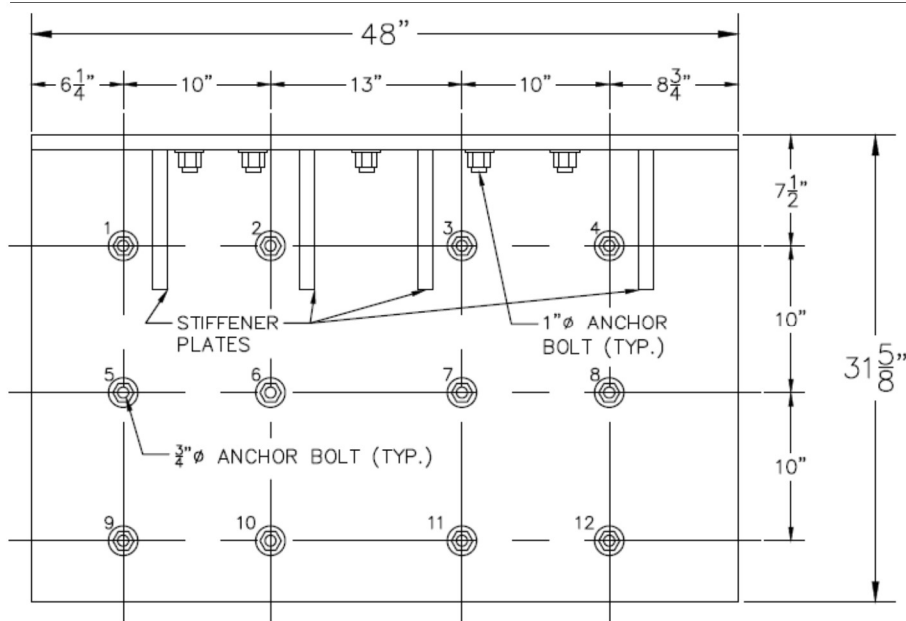


BOAT HOIST SEAT ANGLE SUPPORT PLATE REPAIRS
U.S. ARMY CORPS OF ENGINEERS
STAMFORD HURRICANE BARRIER
STAMFORD, CT

SEAT ANGLE SUPPORT PLATE INFORMATION SECTION 1 (ITEM 1-A)

Stiffened Seat Angle Measurements Table 1

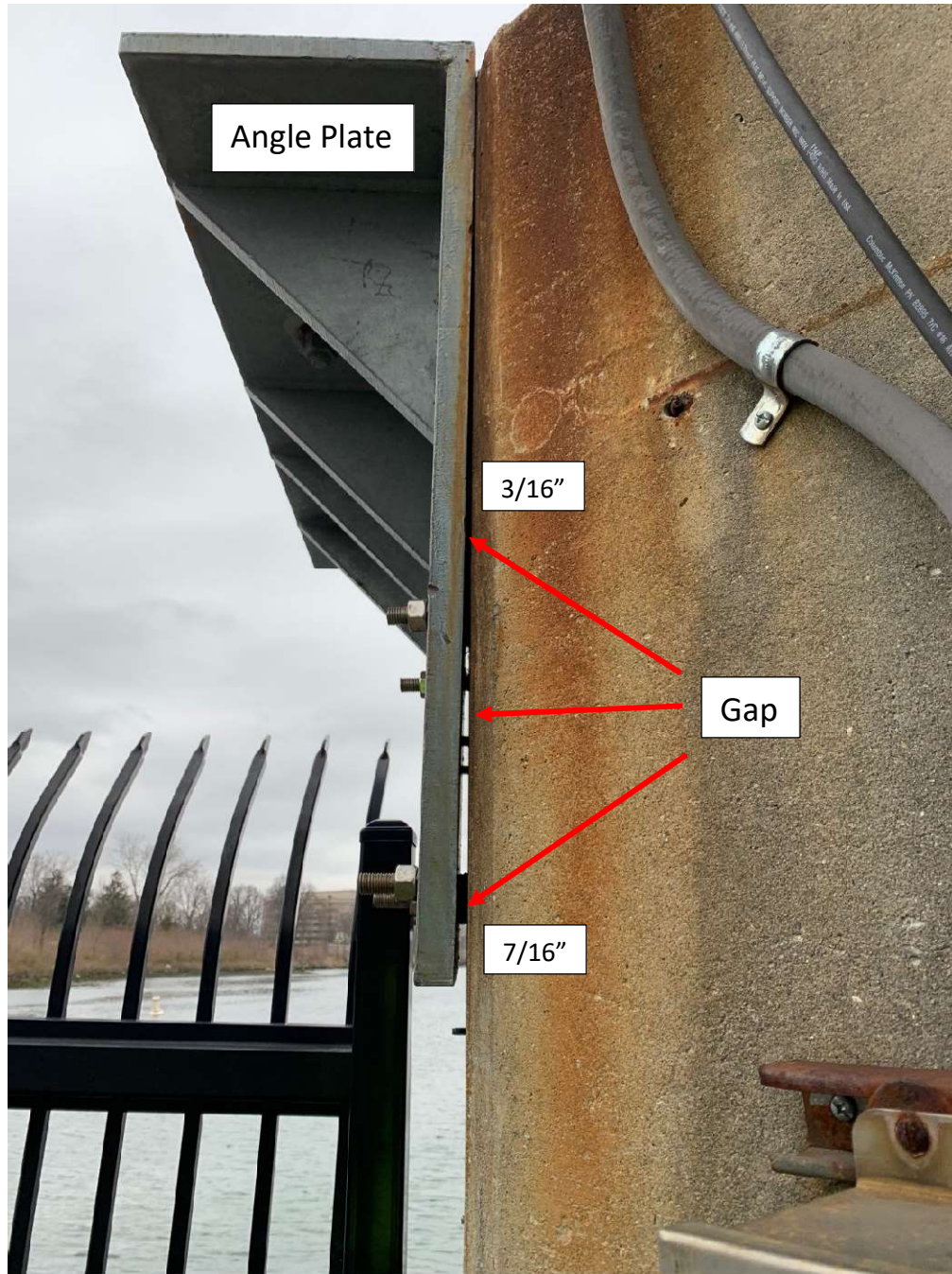
Bolt No.	Bolt		Gap Between Concrete and Plate (in.)	Concrete Embedment Depth (in.)	Notes
	Length (in.)	Exposed Thread Length (in.)			
1	8 1/2	1 1/2	3/16	6 13/16	Tight
2	8 1/2	1 1/2	3/16	6 13/16	Loose
3	8 1/2	2	3/16	0	Loose; Bolt Removed by Hand
4	8 1/2	2	3/16	6 5/16	Loose
5	8 1/2	1 1/2	1/4	6 3/4	Tight
6	8 1/2	1	1/4	7 1/4	Tight
7	8 1/2	2	1/4	6 1/4	Loose
8	8 1/2	2	1/4	6 1/4	Loose
9	8 1/2	2 1/2	7/16	5 9/16	Tight; Rusted Nut
10	8 1/2	1 3/4	7/16	6 5/16	Loose
11	8 1/2	2 7/8	7/16	5 3/16	Loose
12	8 1/2	2 1/2	7/16	5 9/16	Tight



Stiffened Seat Angle Sketch 1

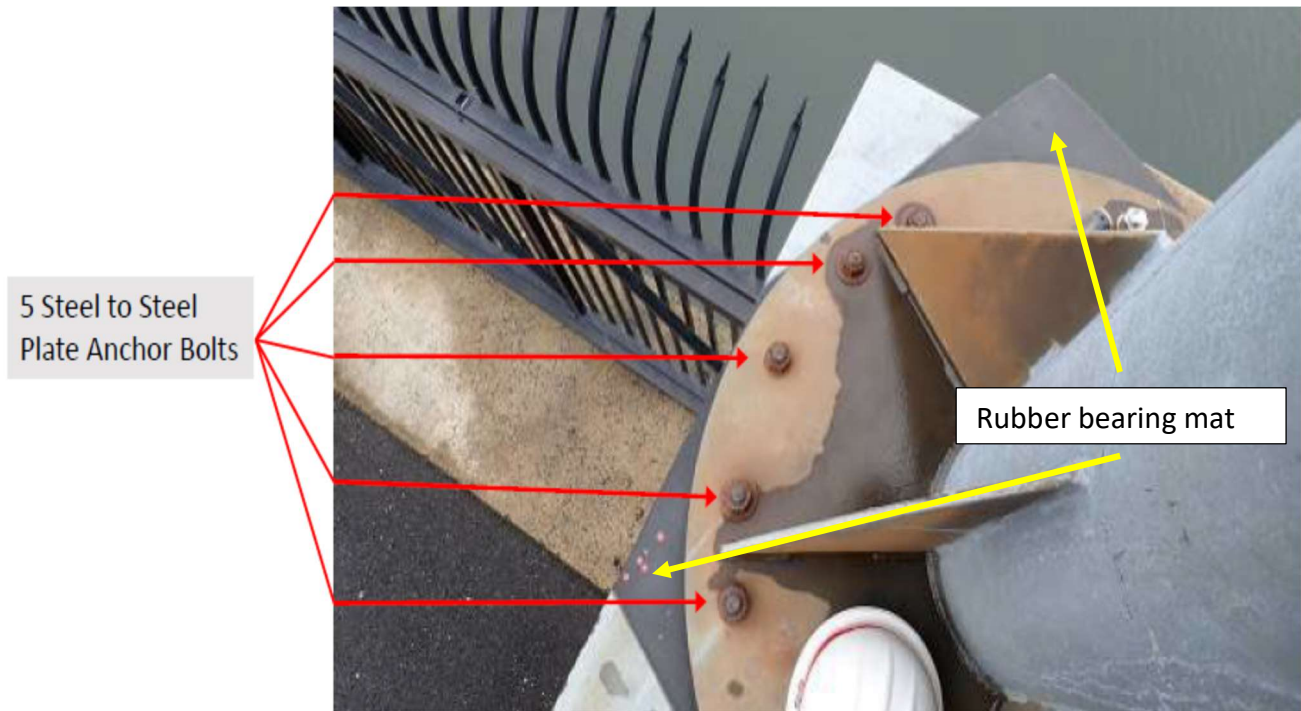
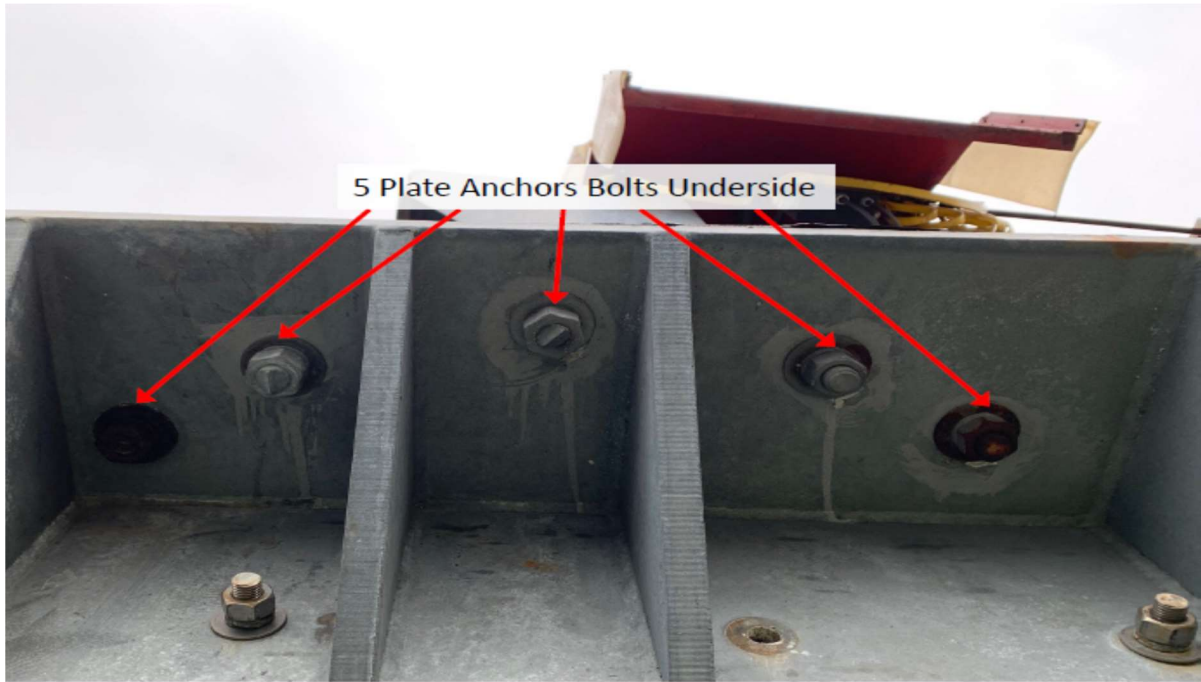
**BOAT HOIST SEAT ANGLE SUPPORT PLATE REPAIRS
U.S. ARMY CORPS OF ENGINEERS
STAMFORD HURRICANE BARRIER
STAMFORD, CT**

Photo #3: Seat Angle Support Plate Side View



**BOAT HOIST SEAT ANGLE SUPPORT PLATE REPAIRS
U.S. ARMY CORPS OF ENGINEERS
STAMFORD HURRICANE BARRIER
STAMFORD, CT**

Photo's #4 & 5: Plate Anchor Bolts Underside and Topside (ITEM 1-B)



**BOAT HOIST SEAT ANGLE SUPPORT PLATE REPAIRS
U.S. ARMY CORPS OF ENGINEERS
STAMFORD HURRICANE BARRIER
STAMFORD, CT**

Photo #6: Fence Post Occlusion (ITEM 1-C)

