

**DEBRIS REMOVAL – STUMP DUMP AND HORSE SHED AREAS
U.S. ARMY CORPS OF ENGINEERS
HOPKINTON-EVERRET LAKES
HOPKINTON, NH
PERFORMANCE WORK STATEMENT**

Informational Photos



Informational Photo 1: Stump Dump Area. Shows front of large debris pile consisting of mostly woody debris. Photo was taken on 10/01/2025 and is intended to provide context to the nature of the work. Any estimate of quantity or type of material should be determined during a site visit prior to the submission of a quote.

**DEBRIS REMOVAL – STUMP DUMP AND HORSE SHED AREAS
U.S. ARMY CORPS OF ENGINEERS
HOPKINTON-EVERRET LAKES
HOPKINTON, NH
PERFORMANCE WORK STATEMENT**

Informational Photos



Informational Photo 2: Stump Dump Area. This photo shows the plant-based debris which is separated from the larger woody debris pile. Photo was taken on 10/01/2025 and is intended to provide context to the nature of the work. Any estimate of quantity or type of material should be determined during a site visit prior to the submission of a quote.

**DEBRIS REMOVAL – STUMP DUMP AND HORSE SHED AREAS
U.S. ARMY CORPS OF ENGINEERS
HOPKINTON-EVERRET LAKES
HOPKINTON, NH
PERFORMANCE WORK STATEMENT**

Informational Photos



Informational Photo 3: Stump Dump Area. This photo is taken from the Western rear corner of the debris pile. Please note the large woody debris that is contained within the pile. Photo was taken on 10/01/2025 and is intended to provide context to the nature of the work. Any estimate of quantity or type of material should be determined during a site visit prior to the submission of a quote.

**DEBRIS REMOVAL – STUMP DUMP AND HORSE SHED AREAS
U.S. ARMY CORPS OF ENGINEERS
HOPKINTON-EVERRET LAKES
HOPKINTON, NH
PERFORMANCE WORK STATEMENT**

Informational Photos



Informational Photo 4: Stump Dump Area. This photo was taken at the Northwest corner of the debris pile. Photo was taken on 10/1/2025 and is intended to provide context to the nature of the work. Any estimate of quantity or type of material should be determined during a site visit prior to the submission of a quote.

**DEBRIS REMOVAL – STUMP DUMP AND HORSE SHED AREAS
U.S. ARMY CORPS OF ENGINEERS
HOPKINTON-EVERRET LAKES
HOPKINTON, NH
PERFORMANCE WORK STATEMENT**

Informational Photos



Informational Photo 5: Horse Shed Area. This photo was taken at the Southwest corner of the debris pile. Photo was taken on 10/14/2025 and is intended to provide context to the nature of the work. Any estimate of quantity or type of material should be determined during a site visit prior to the submission of a quote.

**DEBRIS REMOVAL – STUMP DUMP AND HORSE SHED AREAS
U.S. ARMY CORPS OF ENGINEERS
HOPKINTON-EVERRET LAKES
HOPKINTON, NH
PERFORMANCE WORK STATEMENT**

Informational Photos



Informational Photo 6: Horse Shed Area. This photo was taken at the Northwest corner of the debris pile. Photo was taken on 10/14/2025 and is intended to provide context to the nature of the work. Any estimate of quantity or type of material should be determined during a site visit prior to the submission of a quote.

**DEBRIS REMOVAL – STUMP DUMP AND HORSE SHED AREAS
U.S. ARMY CORPS OF ENGINEERS
HOPKINTON-EVERRET LAKES
HOPKINTON, NH
PERFORMANCE WORK STATEMENT**

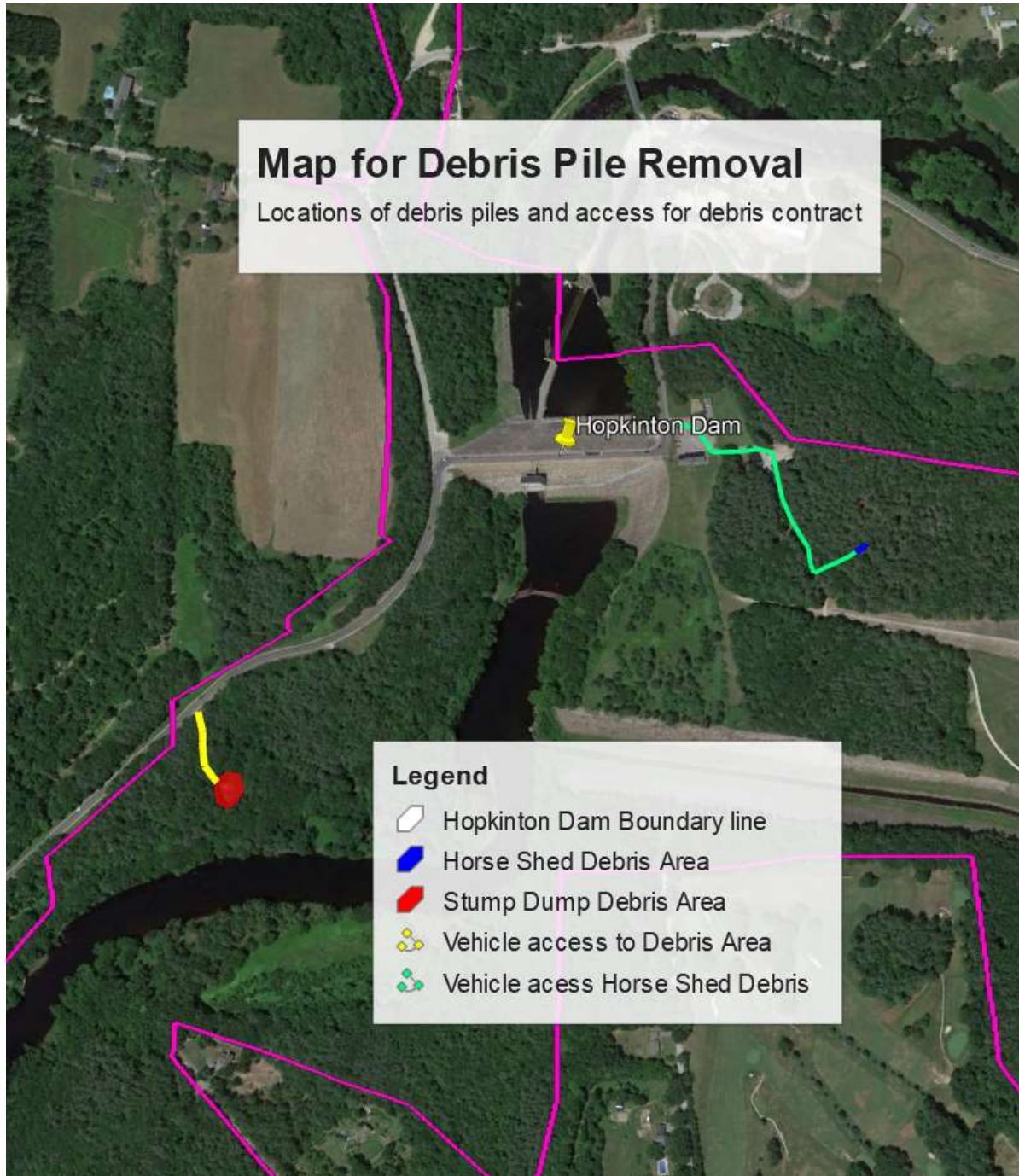
Informational Photos



Informational Photo 7: Horse Shed Area. This photo was taken at the Northeast side of the debris pile. Photo was taken on 10/14/2025 and is intended to provide context to the nature of the work. Any estimate of quantity or type of material should be determined during a site visit prior to the submission of a quote.

**DEBRIS REMOVAL – STUMP DUMP AND HORSE SHED AREAS
U.S. ARMY CORPS OF ENGINEERS
HOPKINTON-EVERRET LAKES
HOPKINTON, NH
PERFORMANCE WORK STATEMENT**

Informational Map



Informational Map 1: Approximate locations of the service areas and access roads. The yellow and green lines represent the access roads. The red shaded area is the Stump Dump debris area and is approximately .5 acres. The blue shaded area is the Horse Shed debris area and is approximately .25 acres.