

**SNOW REMOVAL AND SANDING SERVICES
U.S. ARMY CORPS OF ENGINEERS
BARRE FALLS DAM
HUBBARDSTON, BARRE, AND OAKHAM, MA
PERFORMANCE WORK STATEMENT**

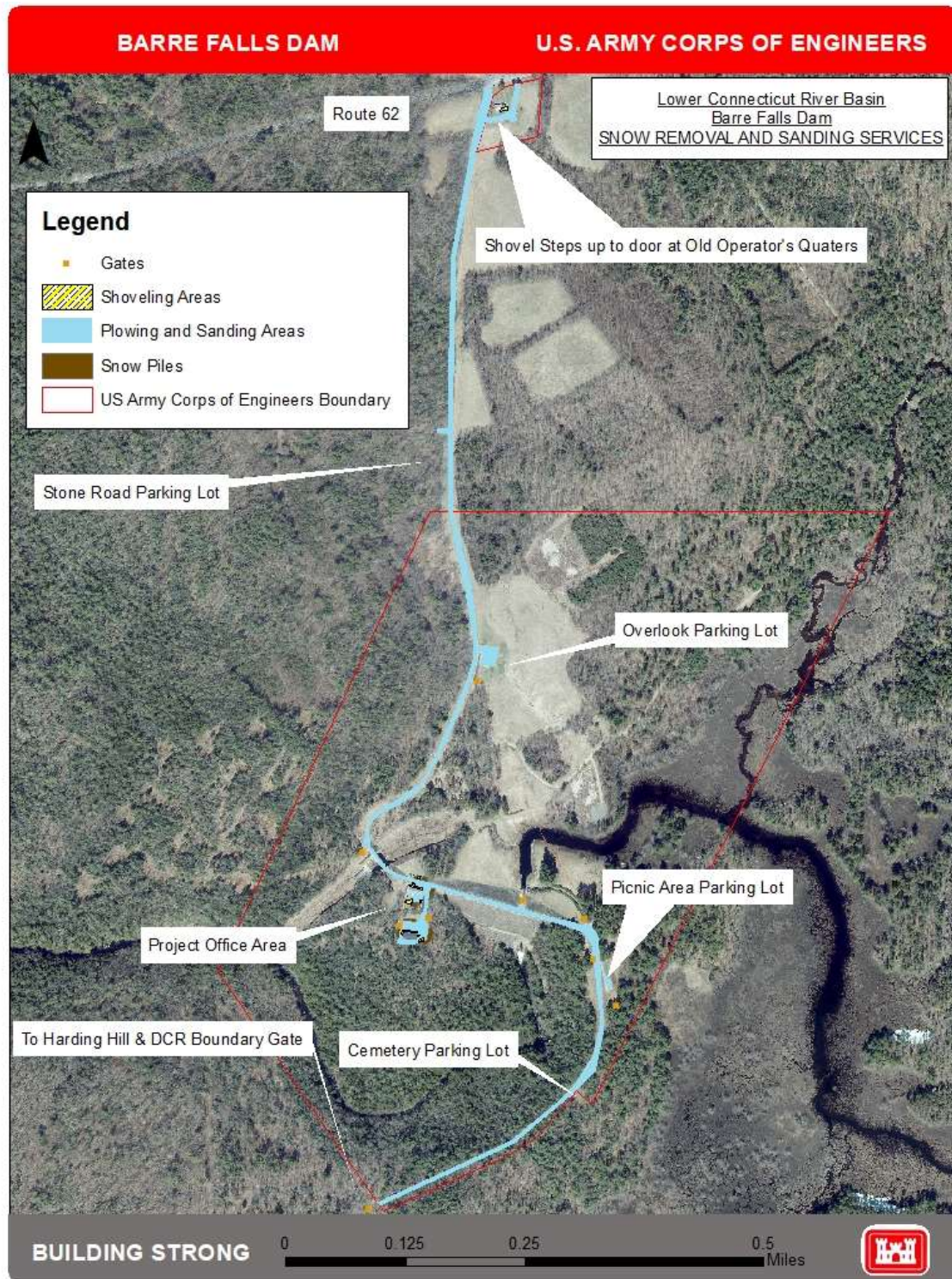


Figure 1: Plowing, Sanding, and Shoveling Areas in Compartment 1.

**SNOW REMOVAL AND SANDING SERVICES
U.S. ARMY CORPS OF ENGINEERS
BARRE FALLS DAM
HUBBARDSTON, BARRE, AND OAKHAM, MA
PERFORMANCE WORK STATEMENT**

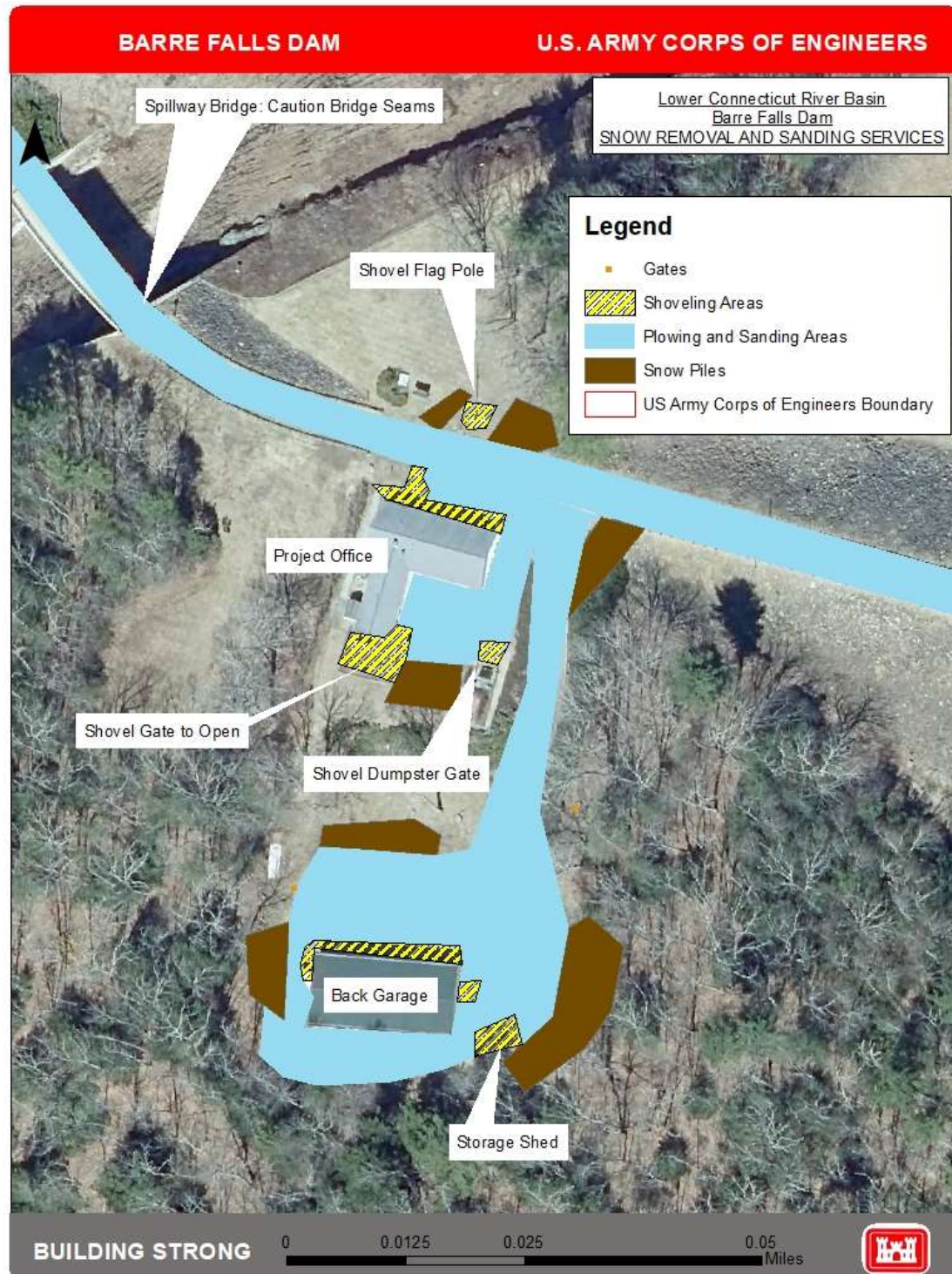


Figure 2: Zoomed in perspective of Project Office Area in Compartment 1 highlighting the plowing, sanding, shoveling areas, and desired snow pile locations.

**SNOW REMOVAL AND SANDING SERVICES
U.S. ARMY CORPS OF ENGINEERS
BARRE FALLS DAM
HUBBARDSTON, BARRE, AND OAKHAM, MA
PERFORMANCE WORK STATEMENT**



Figure 3: Plowing and sanding areas located in Compartment 2, situated off Route 122 in Oakham, MA. See Note.