

**RECREATION AREA JANITORIAL SERVICES
U.S. ARMY CORPS OF ENGINEERS
HOPKINTON EVERETT LAKES
HOPKINTON, NH
PERFORMANCE WORK STATEMENT**

Informational Map

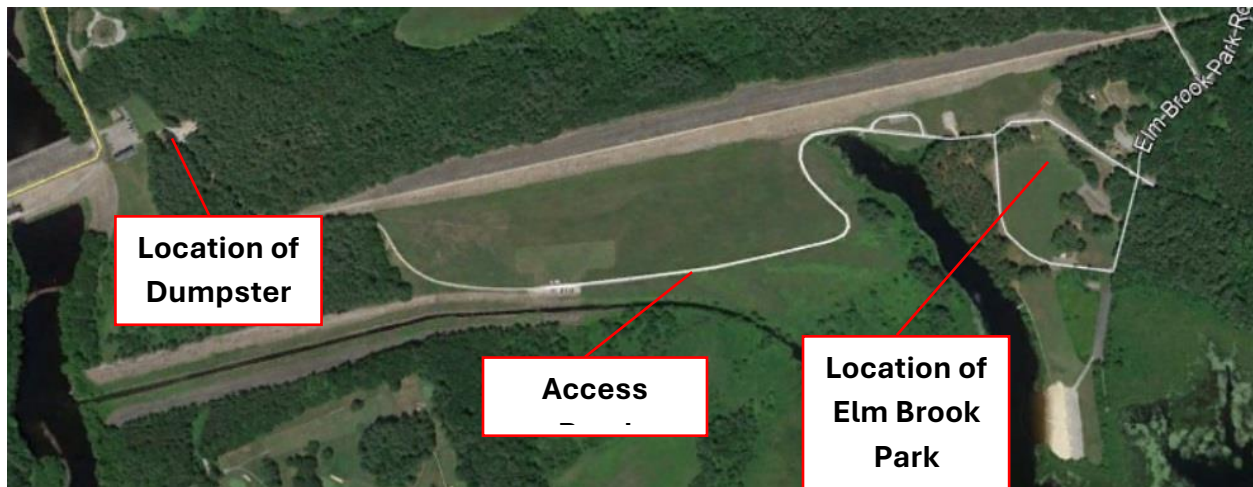


Exhibit 1: An overview reference map to show the location of Elm Brook Park in relation to the dumpster at the Hopkinton Lake Project Office. See Informational Maps 2 and 3 for more specific service location information.

**RECREATION AREA JANITORIAL SERVICES
U.S. ARMY CORPS OF ENGINEERS
HOPKINTON EVERETT LAKES
HOPKINTON, NH
PERFORMANCE WORK STATEMENT**

Informational Photo



Exhibit 2: Location of the dumpster at the Hopkinton Project Office.

**RECREATION AREA JANITORIAL SERVICES
U.S. ARMY CORPS OF ENGINEERS
HOPKINTON EVERETT LAKES
HOPKINTON, NH
PERFORMANCE WORK STATEMENT**

Informational Photo

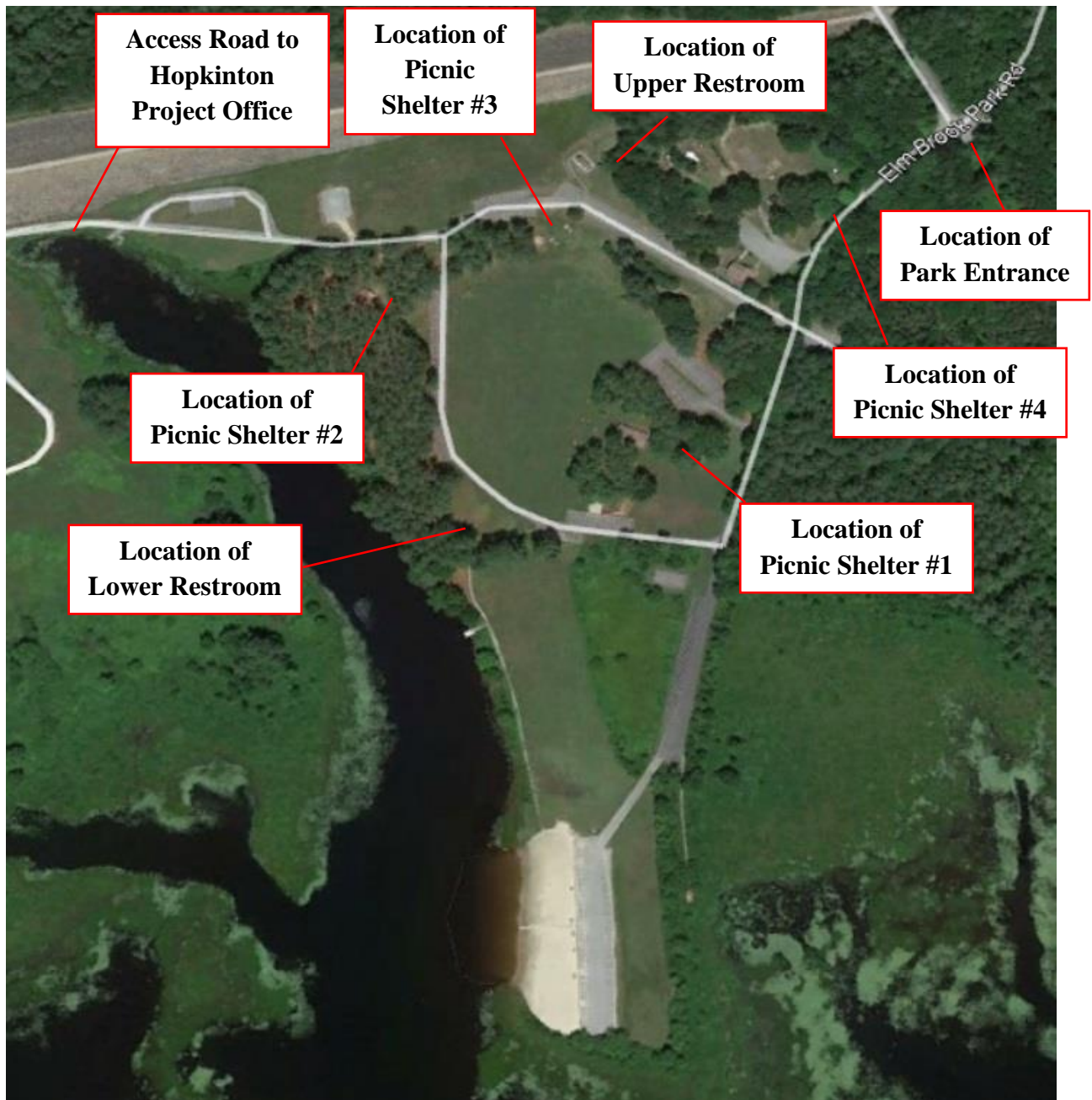


Exhibit 3: Aerial view of Elm Brook Park with facility and access point locations.

**RECREATION AREA JANITORIAL SERVICES
U.S. ARMY CORPS OF ENGINEERS
HOPKINTON EVERETT LAKES
HOPKINTON, NH
PERFORMANCE WORK STATEMENT**

Informational Photo

Elm Brook Park
Lower Restroom

NOT TO SCALE

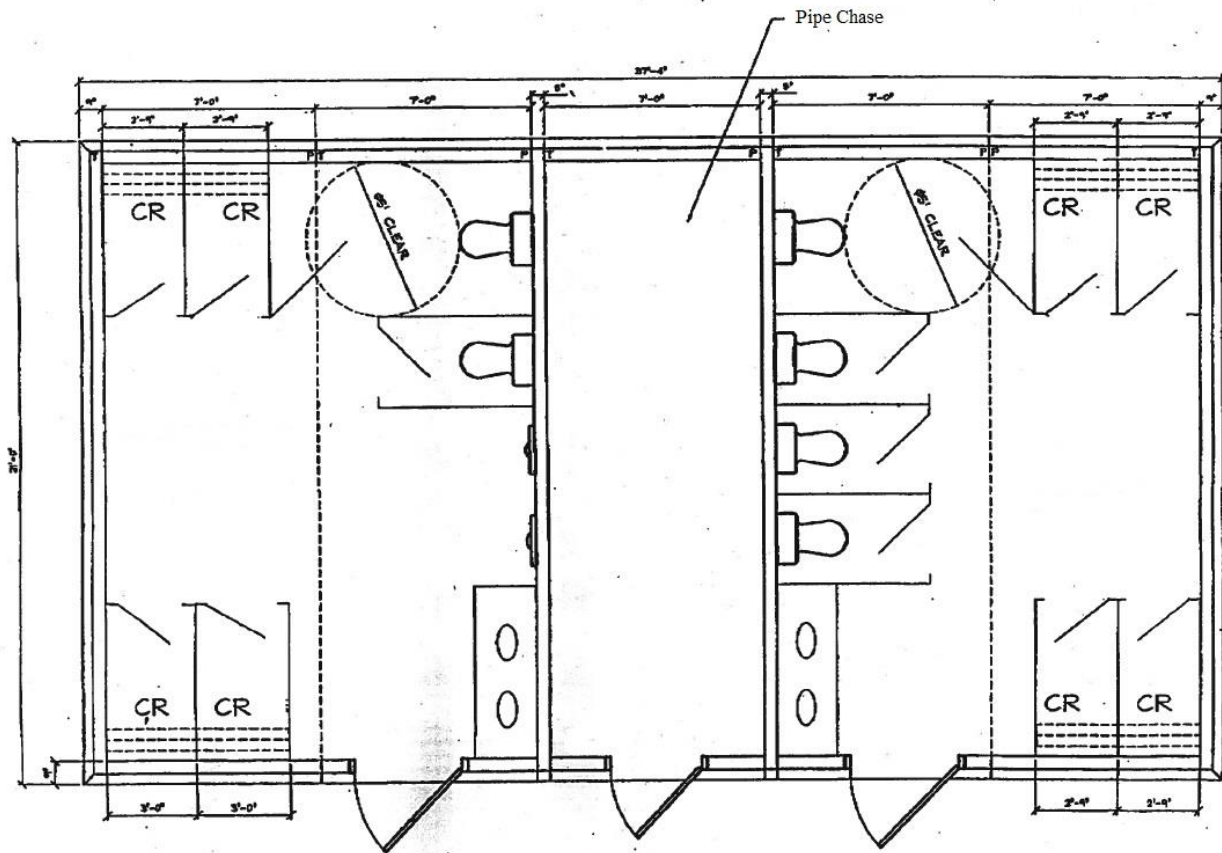
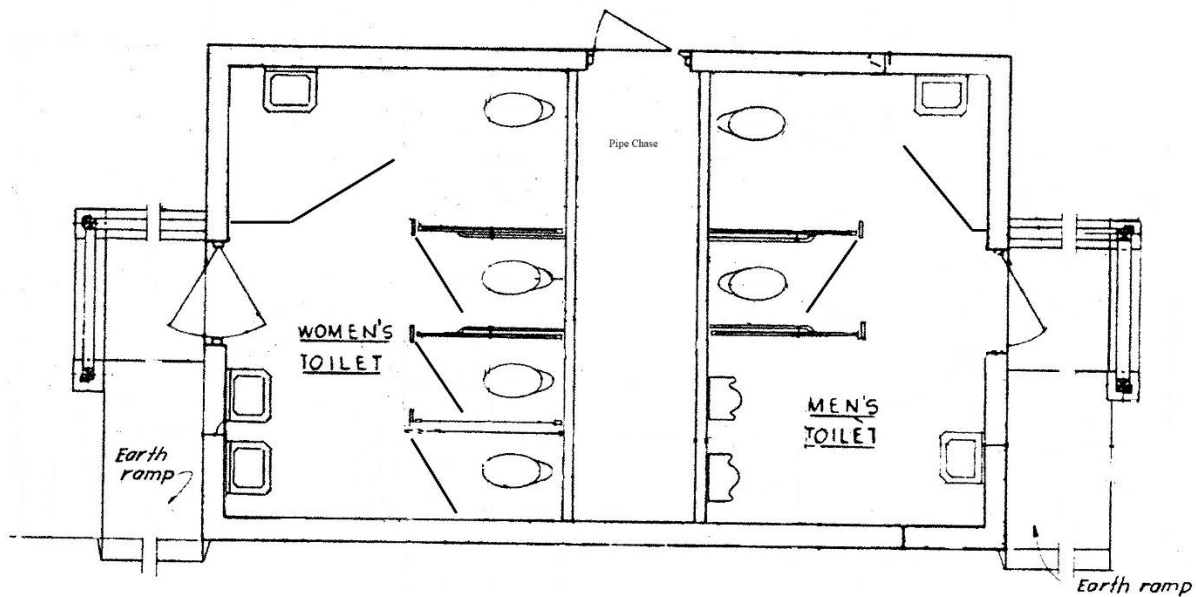


Exhibit 4: Approximate floor layout of the Elm Brook Park lower restroom building. The water tank and pipes (not shown in diagram) are located in the pipe chase against the wall opposite the door.

**RECREATION AREA JANITORIAL SERVICES
U.S. ARMY CORPS OF ENGINEERS
HOPKINTON EVERETT LAKES
HOPKINTON, NH
PERFORMANCE WORK STATEMENT**

Informational Photo



FLOOR PLAN

Exhibit 5: Approximate floor layout of the Elm Brook Park upper restroom building. The water tank and pipe (not shown in diagram) are located in the back half of the pipe chase opposite the door. Space is limited in this pipe chase.

**RECREATION AREA JANITORIAL SERVICES
U.S. ARMY CORPS OF ENGINEERS
HOPKINTON EVERETT LAKES
HOPKINTON, NH
PERFORMANCE WORK STATEMENT**

Informational Photo



Exhibit 6: Photo of the Group Picnic Shelter #2 in Elm Brook Park for reference of the general layout of the picnic shelters.