



Six pumps in place for the river diversion of the Upper Fens Pond.

**U.S. ARMY CORPS OF ENGINEERS – NEW ENGLAND DISTRICT**  
696 VIRGINIA ROAD, CONCORD, MA 01742-2751  
<http://www.nae.usace.army.mil>



Top of the existing twin 72" culverts between the Upper Fens Pond and Avenue Louis Pasteur appear as the work area is dewatered and river flow is diverted – mid-April 2015.



The twin 72" culverts are completely exposed as the Upper Fens Pond is fully dewatered and sediment removal activities have begun – end of April 2015.

**U.S. ARMY CORPS OF ENGINEERS – NEW ENGLAND DISTRICT**  
696 VIRGINIA ROAD, CONCORD, MA 01742-2751  
<http://www.nae.usace.army.mil>



Temporary access roads are constructed on either side of the river bank in order to remove the sediment (black material in the background where the excavators are working) from the river channel bottom – end of April 2015.

**U.S. ARMY CORPS OF ENGINEERS – NEW ENGLAND DISTRICT**  
696 VIRGINIA ROAD, CONCORD, MA 01742-2751  
<http://www.nae.usace.army.mil>



Excavator mixing saw dust into the river sediment to help solidify the material for transport off-site.

**U.S. ARMY CORPS OF ENGINEERS – NEW ENGLAND DISTRICT**  
696 VIRGINIA ROAD, CONCORD, MA 01742-2751  
<http://www.nae.usace.army.mil>



Bank stabilization/construction with stone protection at Upper Fens Pond – early June 2015.

**U.S. ARMY CORPS OF ENGINEERS – NEW ENGLAND DISTRICT**  
696 VIRGINIA ROAD, CONCORD, MA 01742-2751  
<http://www.nae.usace.army.mil>



Bank stabilization/construction with stone protection; geocells; loam; and turf reinforcement mattress at Upper Fens Pond – early July 2015.

**U.S. ARMY CORPS OF ENGINEERS – NEW ENGLAND DISTRICT**  
696 VIRGINIA ROAD, CONCORD, MA 01742-2751  
<http://www.nae.usace.army.mil>





Completed sediment removal from inside the existing Avenue Louis Pasteur culvert revealed an existing timber flooring – late August 2015.

**U.S. ARMY CORPS OF ENGINEERS – NEW ENGLAND DISTRICT**  
696 VIRGINIA ROAD, CONCORD, MA 01742-2751  
<http://www.nae.usace.army.mil>



Downstream of Existing Avenue Louis Pasteur – sediment removed from inside the culvert; and installation of the articulated concrete blocks (ACB) has begun – late August 2015.

**U.S. ARMY CORPS OF ENGINEERS – NEW ENGLAND DISTRICT**  
696 VIRGINIA ROAD, CONCORD, MA 01742-2751  
<http://www.nae.usace.army.mil>



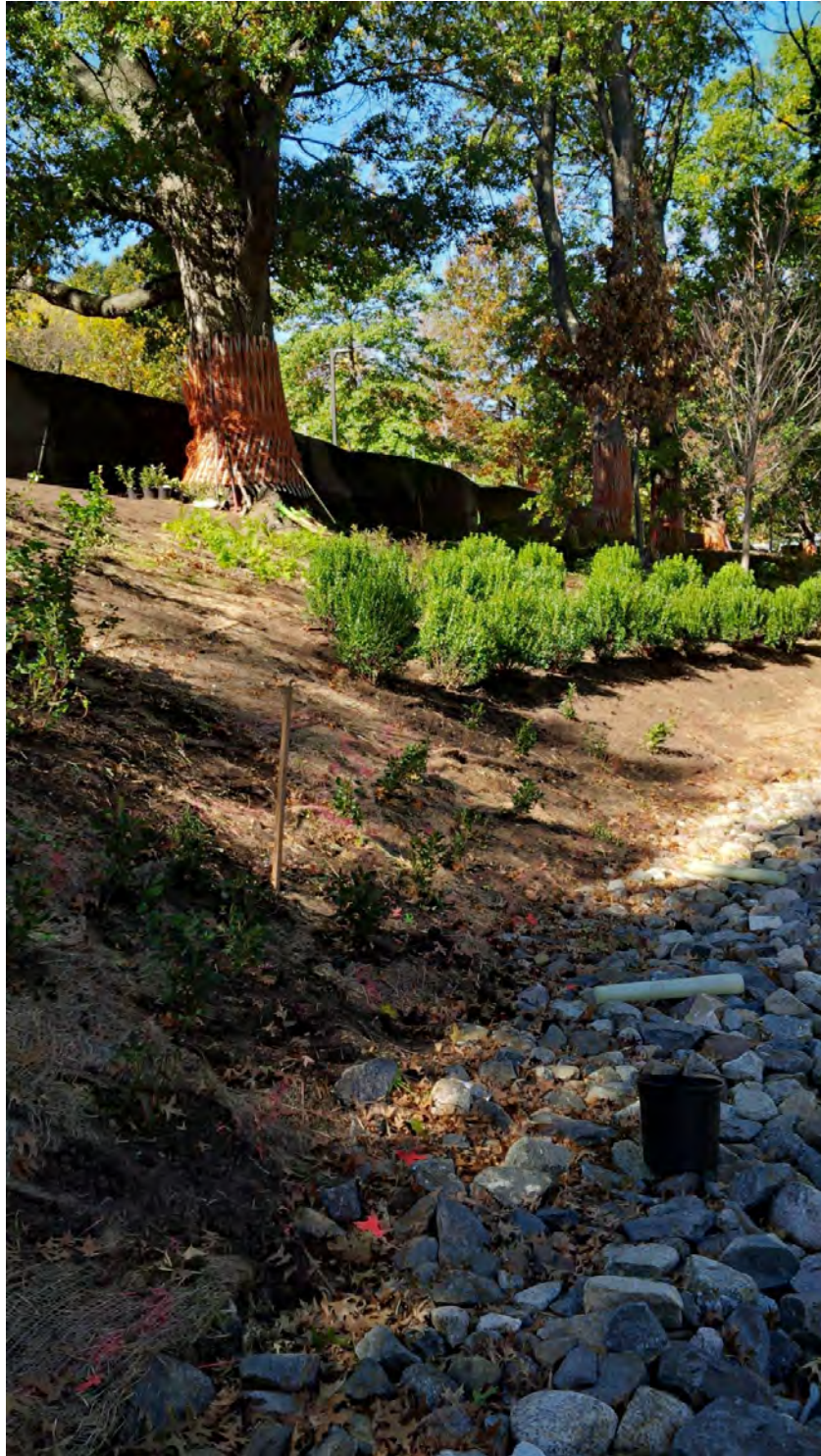
Downstream of Existing Avenue Louis Pasteur – ACB's installed for channel bottom scour protection; stone protection and turf reinforced mattress installed for bank stabilization/restoration; and loam placed ready for plantings to complete this area of work – early September 2015.

**U.S. ARMY CORPS OF ENGINEERS – NEW ENGLAND DISTRICT**  
696 VIRGINIA ROAD, CONCORD, MA 01742-2751  
<http://www.nae.usace.army.mil>



Upper Fens Pond – new tree being planted as part of the bank restoration work – late September 2015.

**U.S. ARMY CORPS OF ENGINEERS – NEW ENGLAND DISTRICT**  
696 VIRGINIA ROAD, CONCORD, MA 01742-2751  
<http://www.nae.usace.army.mil>



Upper Fens Pond – shrubs and plants being planted as part of the bank restoration work – mid October 2015.



Downstream end of the Upper Fens Pond, where the existing twin 72" culverts begin – note that the excavation to daylight the area between Upper Fens Pond and Avenue Louis Pasteur has begun – mid October 2015.

**U.S. ARMY CORPS OF ENGINEERS – NEW ENGLAND DISTRICT**  
696 VIRGINIA ROAD, CONCORD, MA 01742-2751  
<http://www.nae.usace.army.mil>



Upper Fens Pond – plantings as part of the bank restoration work in the fall planting season completed – herbivore exclusion fence and habitat boulders installed – early November 2015.



Daylighting of area between Upper Fens Pond and Avenue Louis Pasteur Culvert – note the recreation of the historic Olmstead island (foreground right) starting to take shape – early November 2015

**U.S. ARMY CORPS OF ENGINEERS – NEW ENGLAND DISTRICT**  
696 VIRGINIA ROAD, CONCORD, MA 01742-2751  
<http://www.nae.usace.army.mil>





Excavation of the area between Upper Fens Pond and Avenue Louis Pasteur Culvert – note the existing timber piling on the left side which delineates the side of the existing twin 72” culverts that were recently removed as part of the daylighting efforts – early November 2015.



Installation of the articulated concrete blocks (ACBs) at the upstream end of the Avenue Louis Pasteur culvert  
– early December 2015.

**U.S. ARMY CORPS OF ENGINEERS – NEW ENGLAND DISTRICT**  
696 VIRGINIA ROAD, CONCORD, MA 01742-2751  
<http://www.nae.usace.army.mil>



Installation of the geocells and loam and planting of the historic Olmsted Island – early December 2015.

**U.S. ARMY CORPS OF ENGINEERS – NEW ENGLAND DISTRICT**  
696 VIRGINIA ROAD, CONCORD, MA 01742-2751  
<http://www.nae.usace.army.mil>



Recreated historic Olmsted Island – with new geocells, loam, and turf reinforcement mattress (TRM) installed and all trees planted – note in the foreground a new headwall and drainage piping being installed on the constructed right bank of the daylighted area – looking downstream at the Avenue Louis Pasteur culvert – mid December 2015.

**U.S. ARMY CORPS OF ENGINEERS – NEW ENGLAND DISTRICT**  
696 VIRGINIA ROAD, CONCORD, MA 01742-2751  
<http://www.nae.usace.army.mil>



Recreated historic Olmsted Island – with new geocells, loam, and turf reinforcement mattress (TRM) installed and all trees planted – note the habitat logs installed on the island and in the constructed channel – looking cross river towards Simmons College – mid December 2015.

**U.S. ARMY CORPS OF ENGINEERS – NEW ENGLAND DISTRICT**  
696 VIRGINIA ROAD, CONCORD, MA 01742-2751  
<http://www.nae.usace.army.mil>



Water flowing over the steel sheeting cofferdam at Upper Fens Pond after the pumps were turned off – note the notch that was cut in the sheeting to allow water to flow slowly back into the pond – looking upstream towards Landmark Center – 19 December 2015.

**U.S. ARMY CORPS OF ENGINEERS – NEW ENGLAND DISTRICT**  
696 VIRGINIA ROAD, CONCORD, MA 01742-2751  
<http://www.nae.usace.army.mil>



Water flowing over the steel sheeting cofferdam at Upper Fens Pond after the pumps were turned off – note the notch that was cut in the sheeting to allow water to flow slowly back into the pond – looking downstream towards Ave Louis Pasteur – 21 December 2015.

**U.S. ARMY CORPS OF ENGINEERS – NEW ENGLAND DISTRICT**  
696 VIRGINIA ROAD, CONCORD, MA 01742-2751  
<http://www.nae.usace.army.mil>



Water flowing in Upper Fens Pond after the pumps were turned off – looking upstream towards Landmark Center – 21 December 2015.

**U.S. ARMY CORPS OF ENGINEERS – NEW ENGLAND DISTRICT**  
696 VIRGINIA ROAD, CONCORD, MA 01742-2751  
<http://www.nae.usace.army.mil>





Water beginning to flow around the recreated historic Olmsted Island after the pumps were turned off – looking downstream towards Ave Louis Pasteur – 19 December 2015.

**U.S. ARMY CORPS OF ENGINEERS – NEW ENGLAND DISTRICT**  
696 VIRGINIA ROAD, CONCORD, MA 01742-2751  
<http://www.nae.usace.army.mil>



Water flowing around the recreated historic Olmsted Island after the pumps were turned off – looking downstream towards Ave Louis Pasteur – 21 December 2015.

**U.S. ARMY CORPS OF ENGINEERS – NEW ENGLAND DISTRICT**  
696 VIRGINIA ROAD, CONCORD, MA 01742-2751  
<http://www.nae.usace.army.mil>



Water flowing downstream of Avenue Louis Pasteur culvert – 21 December 2015.

**U.S. ARMY CORPS OF ENGINEERS – NEW ENGLAND DISTRICT**  
696 VIRGINIA ROAD, CONCORD, MA 01742-2751  
<http://www.nae.usace.army.mil>