

**Appendix 4.14-B**  
**Potential Land Preservation Areas**



## Potential Land Preservation Areas

PPA #	Site Name	Municipality	Size (ac)	Has Priority Habitat	Has Vernal Pools	Notes
P09	Gobi Property	Foxborough, Sharon	191	N	Y	
P14	Municipal Water Source and Future Well Site	Foxborough	77	PH 488 / EH 392	Y	
P17	Canoe River ACEC (MAPC Region)	Foxborough	11	N	N	No wetlands – developable uplands adjacent to Willow St.
P20	Massapoag Sportmen's Club	Sharon	125	N	Y	
P22	Sreda Property	Sharon	88	PH 298 / EH 198	Y	Includes land to north and west of original delineated parcel <sup>1</sup>
P24	Morse Farm	Sharon	40	PH 367 / EH 233	N	
P25	Rattlesnake Hill	Sharon	339	PH 367 / EH 233	Y	
P26	Echo Pond	Stoughton	60	N	Y	
P28	Benson Pond	Stoughton	102	N	Y	
P33	Clover Valley Farm	Easton	94	N	N	Includes additional land outside of original delineated parcel <sup>1</sup>
P34A	Hockomock ACEC (OCPC Region)	Easton	315	PH 1392 / EH 59	Y	Large cranberry bogs
P34B	Hockomock ACEC (OCPC Region)	Easton	131	PH 245 / EH 132	Y	
P34C	Hockomock ACEC (OCPC Region)	Bridgewater	224	PH 1392 / EH 59	Y	Large cluster of vernal pools
P36	Taunton River/South Bridgewater/Cumberland Farm Land	Bridgewater	746	PH 1423 / EH 34	Y	Restoration of ditched farm fields
P37	Taunton River	Bridgewater	151	PH 1423 / EH 34	Y	Includes additional land to east of original delineated parcel <sup>1</sup>
P38	Bird Street Sanctuary	Stoughton	45	N	Y	Small portions of developable upland accessible
P40	Southworth Pond and Lipsky Fields	Stoughton	59	N	N	
P46A	Upper Taunton River	Middleborough	228	PH 1421 / EH 36	Y	
P46B	Upper Taunton River	Raynham	393	PH 282 / EH 179	Y	
P47	Great & Little Cedar Swamps	Halifax, Middleborough	2,579	PH 1332 / EH 966	Y	High priority, includes extensive farm areas
P49	Nemasket River - Farm Protection	Middleborough	186	PH 13 / EH 77	Y	Protection of wetlands in northern portion



## Appendix A Potential Land Preservation Areas (continued)

PPA #	Site Name	Municipality	Size (ac)	Has Priority Habitat	Has Vernal Pools	Notes
P50A	Green Heart Corridor	Middleborough	997	N	Y	Cranberry bogs
P50B	Green Heart Corridor	Middleborough	523	PH 226 / EH 107	Y	
P51	Thatcher Pond	Taunton	180	PH 1421 / EH 36	Y	
P52	Runnins River Headwaters	Seekonk	292	PH 724 / EH 661	Y	
P53	Palmer River Aquifer/Zone II Protection Area	Rehoboth	198	N	Y	
P54	Muddy Cove Brook	Dighton	207	N	Y	
P55	Lower Taunton River Protection Area	Berkley	50	N	Y	Area adjacent to existing protected open space
P56	Acidic Fen	Freetown	255	PH 1379	Y	
P58	Greenway Connection	Freetown	1,583	PH 303 / EH 204, PH 1239 / EH 177	Y	Surrounds small box of existing protected open space
P59	Mattapoisett River Aquifer Protection Area	Rochester	1,138	PH 1330 / EH 58	Y	
P60	Aucoot Cove	Marion	49	PH 15 / EH 79	N	Frontage to existing road
P61	Pine Barrens/Aquifer Protection Area	Wareham	1,341	PH 1396 / EH 862 / EH 969, PH 858, PH 859	Y	Developable uplands in central section of parcel
P62	Bioreserve (Infill)	Westport	275	N	Y	
P63A	Acushnet Swamp	Dartmouth	176	PH 1349 / EH 1	Y	
P63B	Acushnet Swamp	Dartmouth	196	PH 1349 / EH 1	N	
P66	Aponagansett Cove	Dartmouth	189	PH 922 / EH 751	Y	
P69	Nasketucket Bay State Reservation Area	Mattapoisett, Fairhaven	185	PH 15 / EH 79	N	

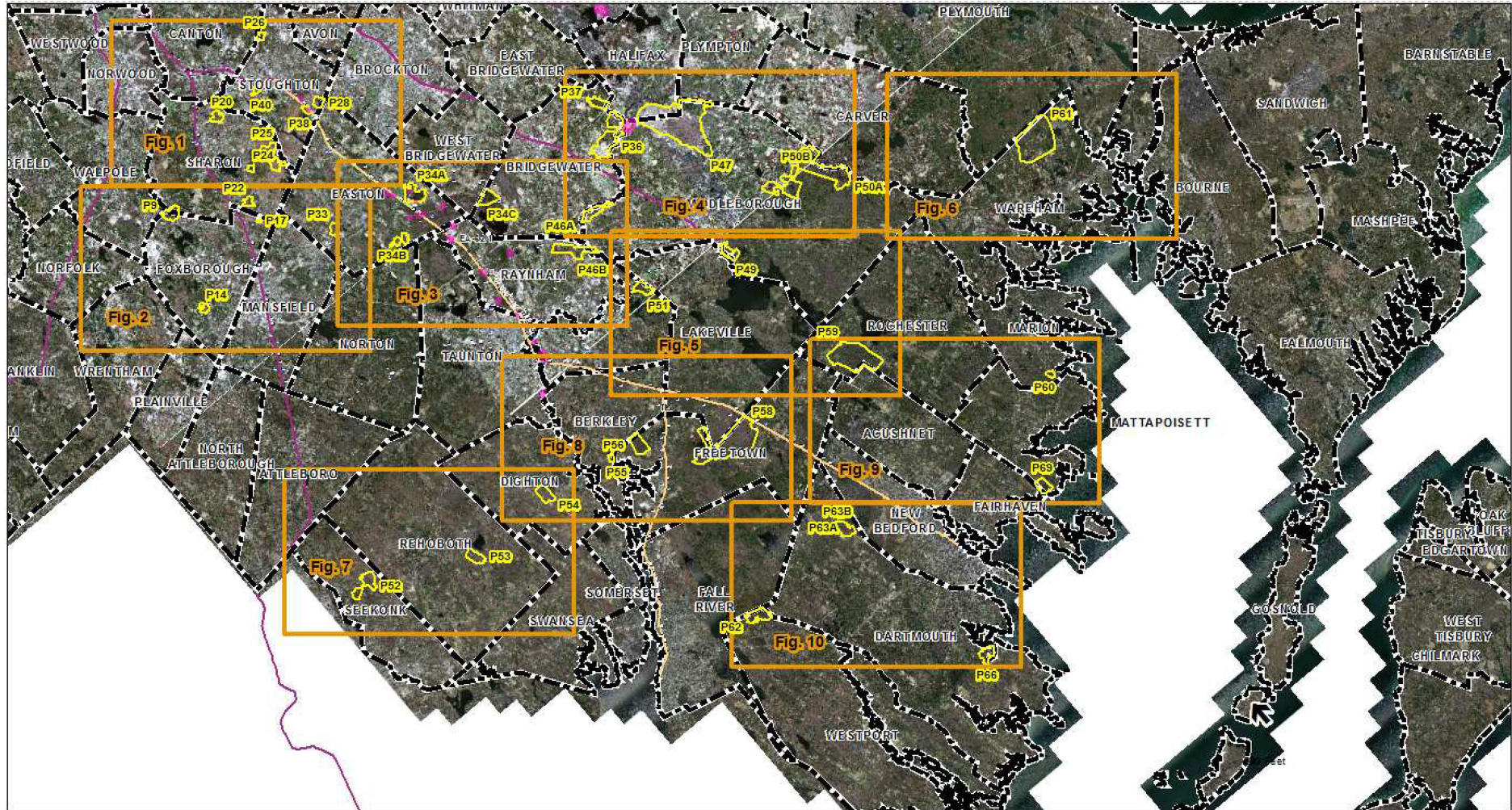
Source: Vanasse Hangen Brustlin, Inc., 2012

<sup>1</sup> "Original delineated parcel" refers to parcels as shown on the Corridor Plan map.

### Figure Key

Symbol	Description
	Open Water
	Bog
	Cranberry Bog
	Deep Marsh
	Shallow Marsh Meadow or Fen
	Shrub Swamp
	Wooded Swamp Coniferous
	Wooded Swamp Deciduous
	Wooded Swamp Mixed Trees
	South Coast Rail Alignment
	MBTA Commuter Rail
	Protected Open Space
	NHESP Priority Habitat
	Potential Mitigation/Establishment/Restoration Area

Scales are noted in each figure.



Overview of protection opportunities in PPAs. Scale = 1:250,000.

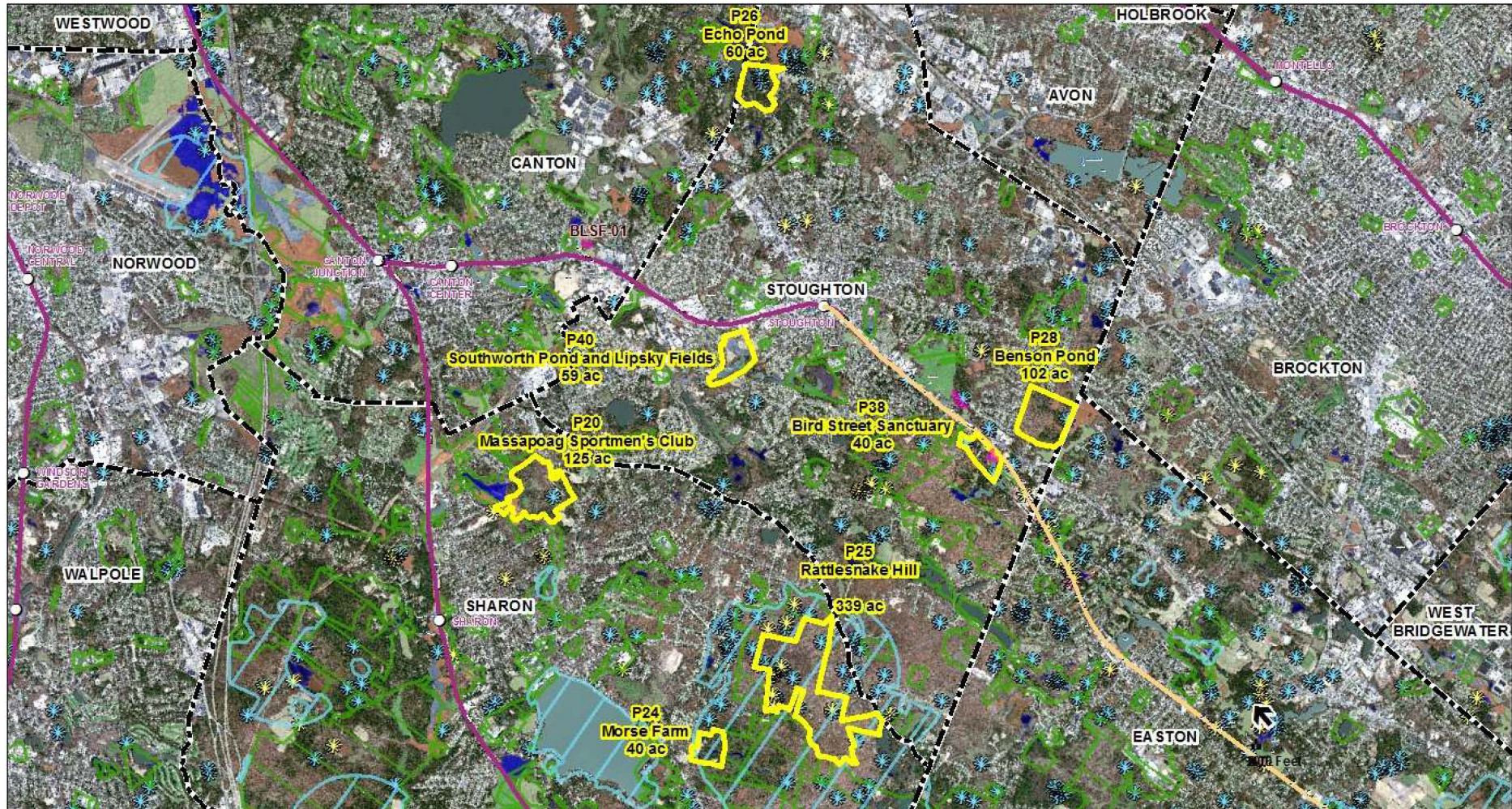


Figure 1. Protection opportunities in Stoughton and northern/eastern Sharon. Scale = 1:50,000.

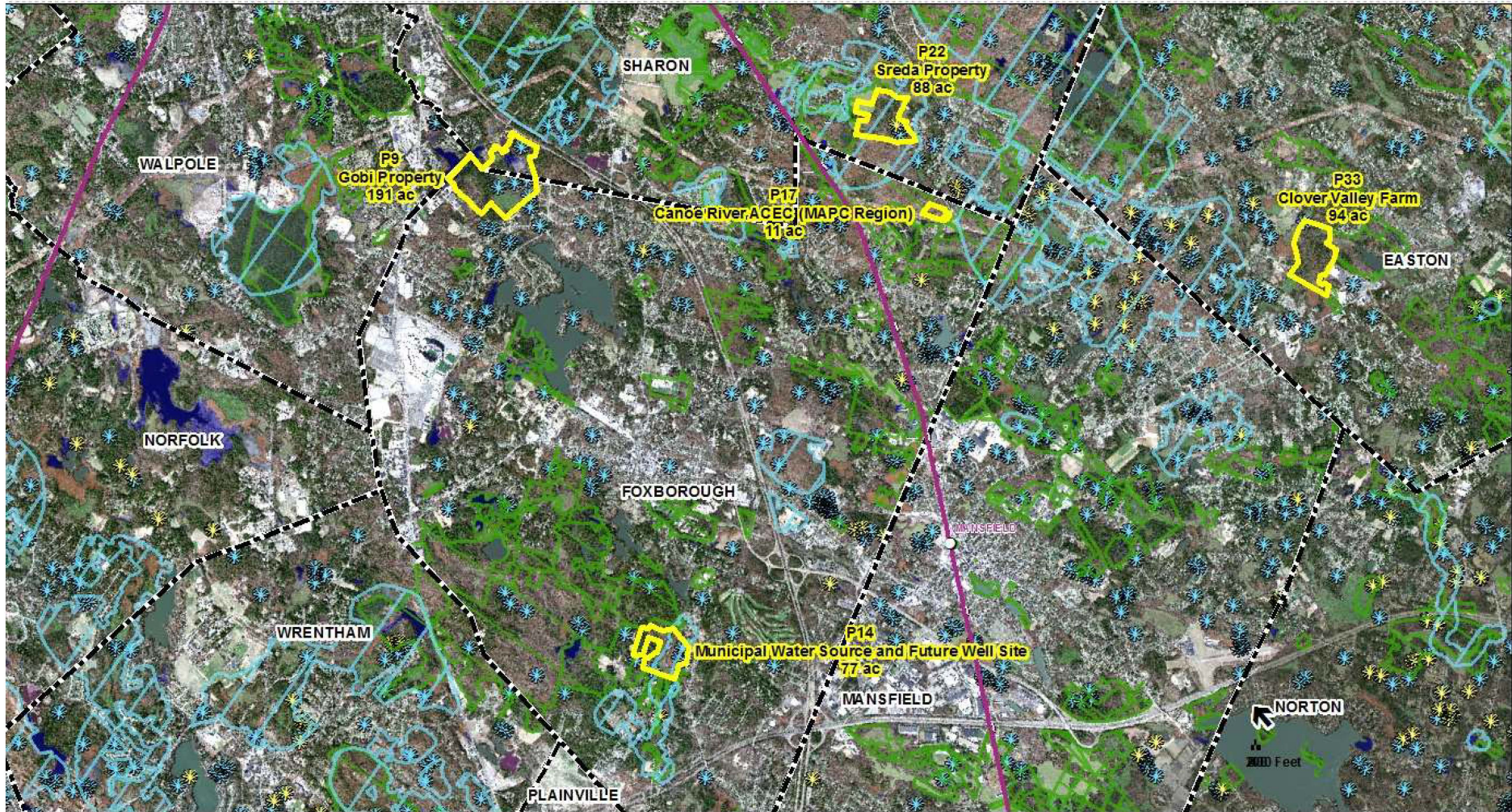


Figure 2. Protection opportunities in southern/western Sharon, Foxborough, and western Easton. Scale = 1:50,000.

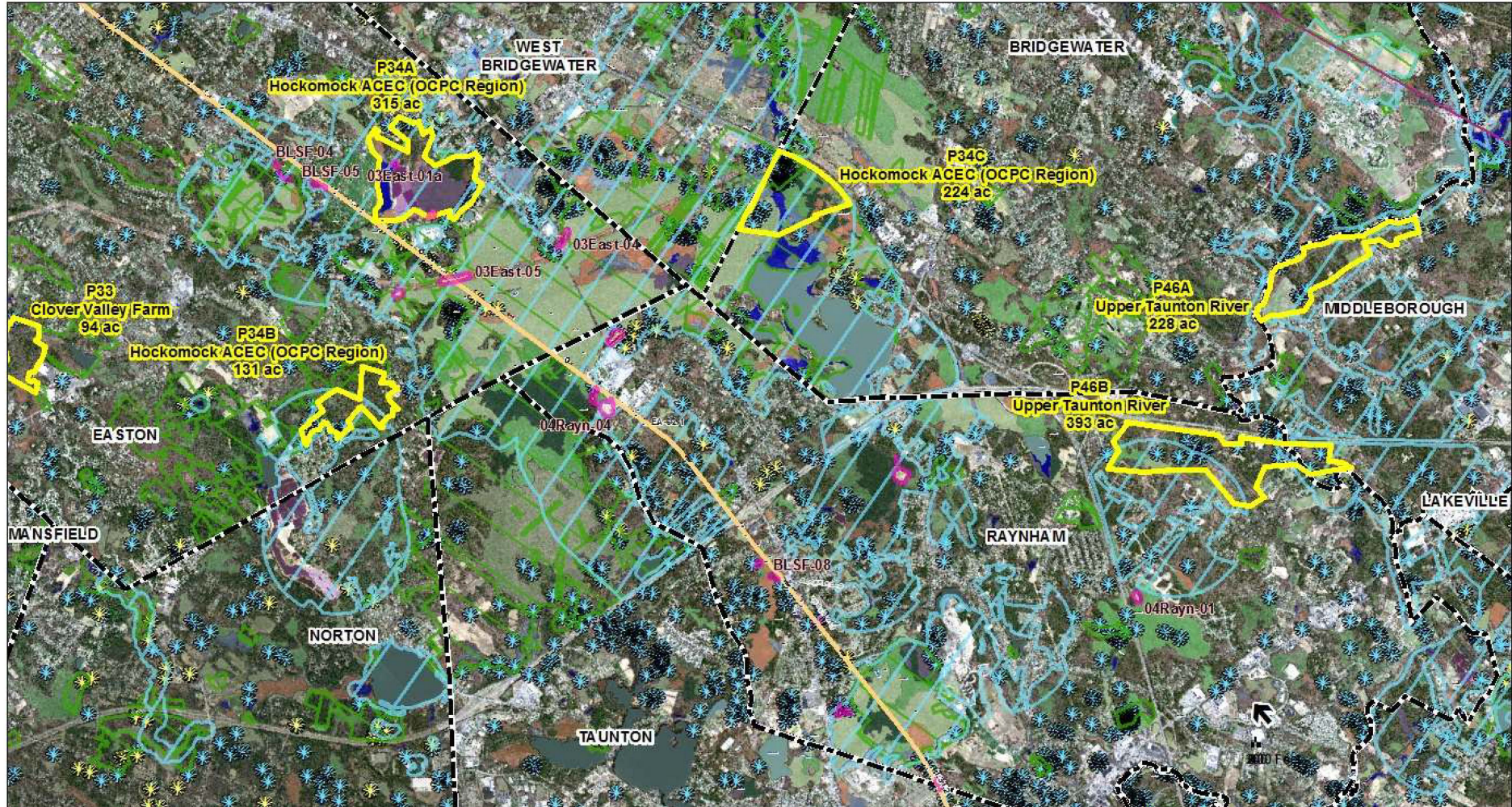


Figure 3. Protection opportunities in eastern/southern Easton, western Bridgewater, northwestern Middleborough, and Raynham. Scale = 1:50,000.



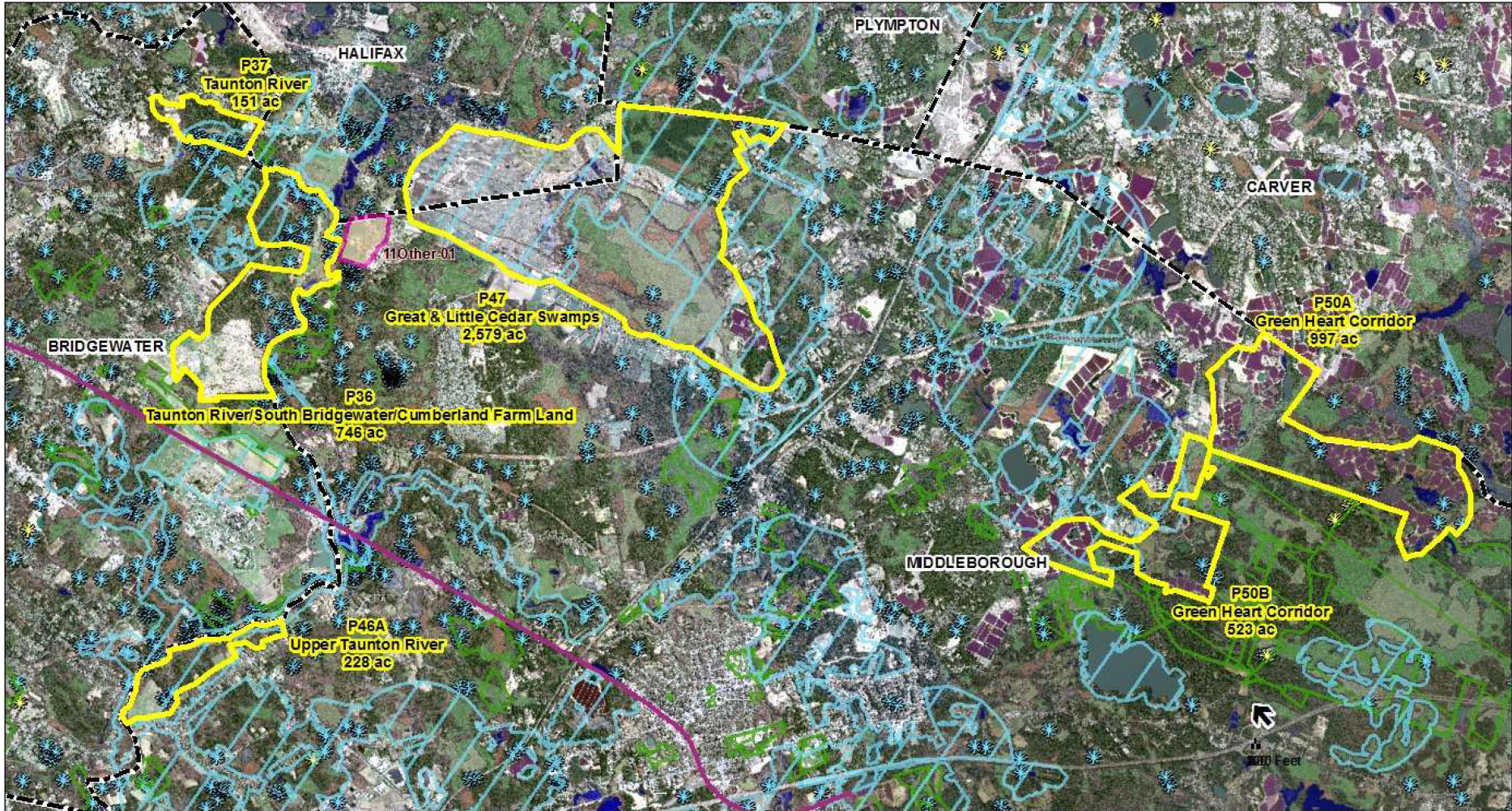


Figure 4. Protection opportunities in eastern Bridgewater, Halifax, and eastern/southern Middleborough. Scale = 1:50,000.

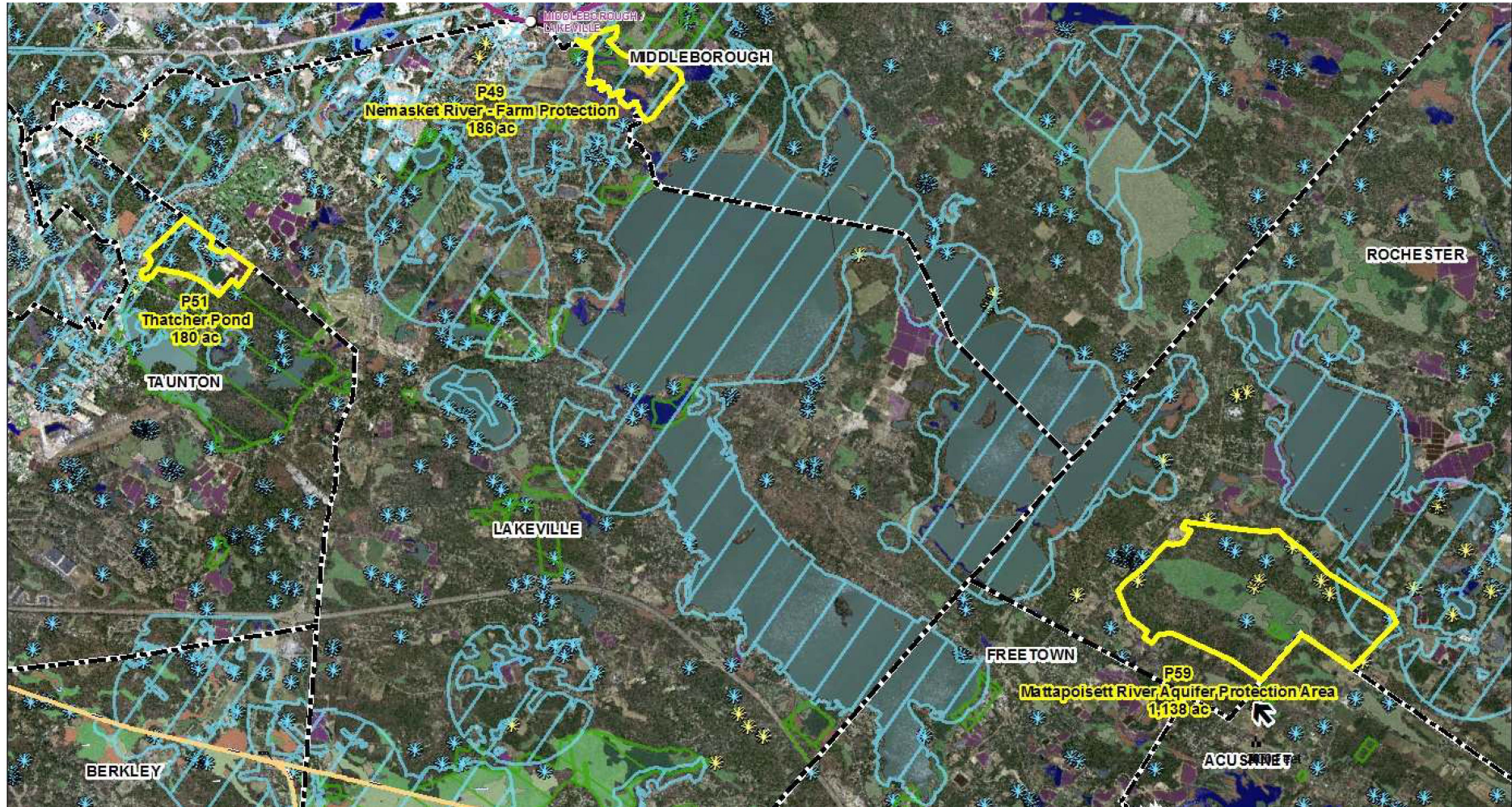


Figure 5. Protection opportunities in Taunton, southwestern Middleborough, and Rochester. Scale = 1:50,000.

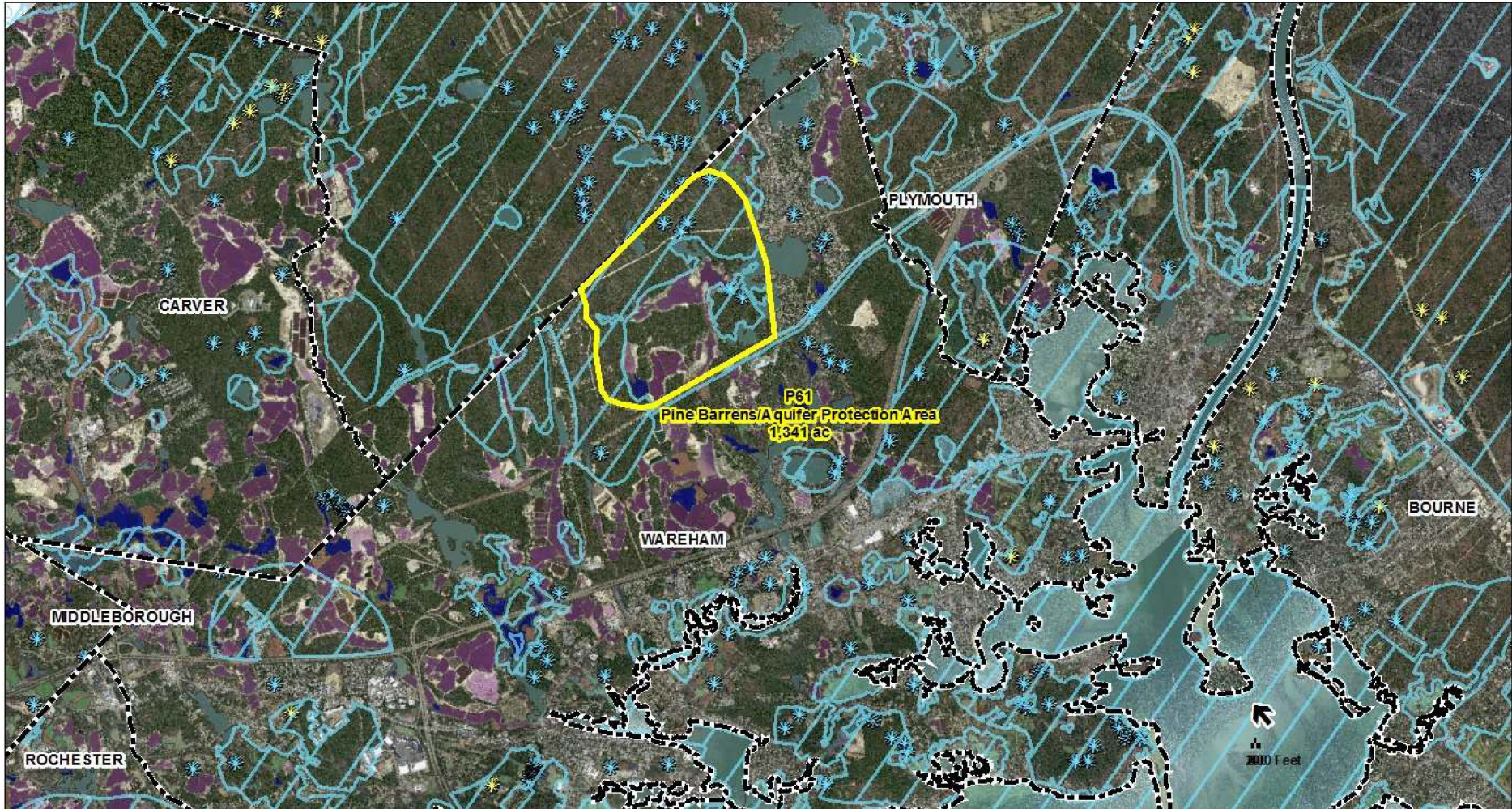


Figure 6. Protection opportunities in Wareham. Scale = 1:50,000.



Figure 7. Protection opportunities in Seekonk, Rehoboth, and Dighton. Scale = 1:50,000.

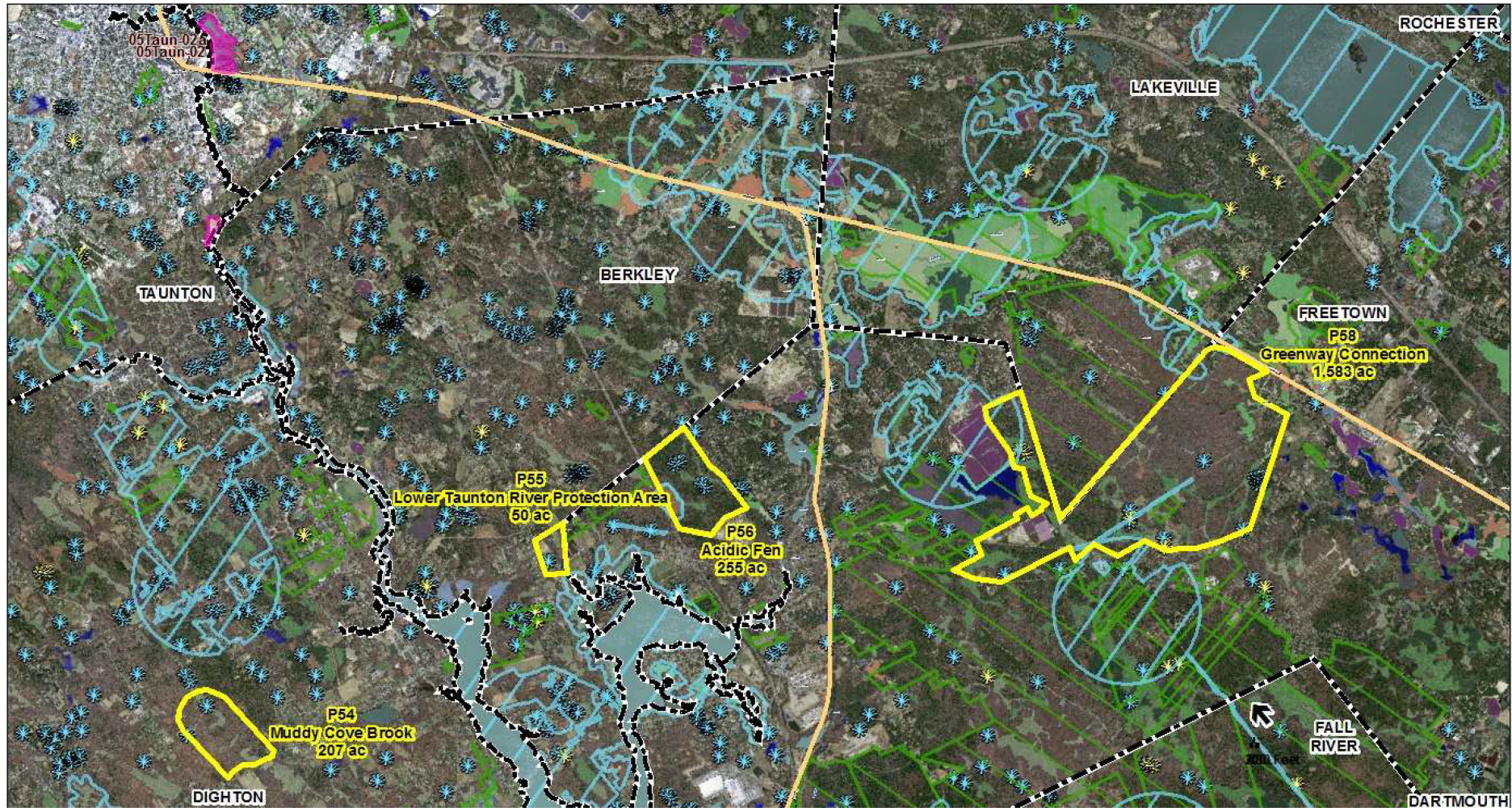


Figure 8. Protection opportunities in Berkley and Freetown. Scale = 1:50,000.

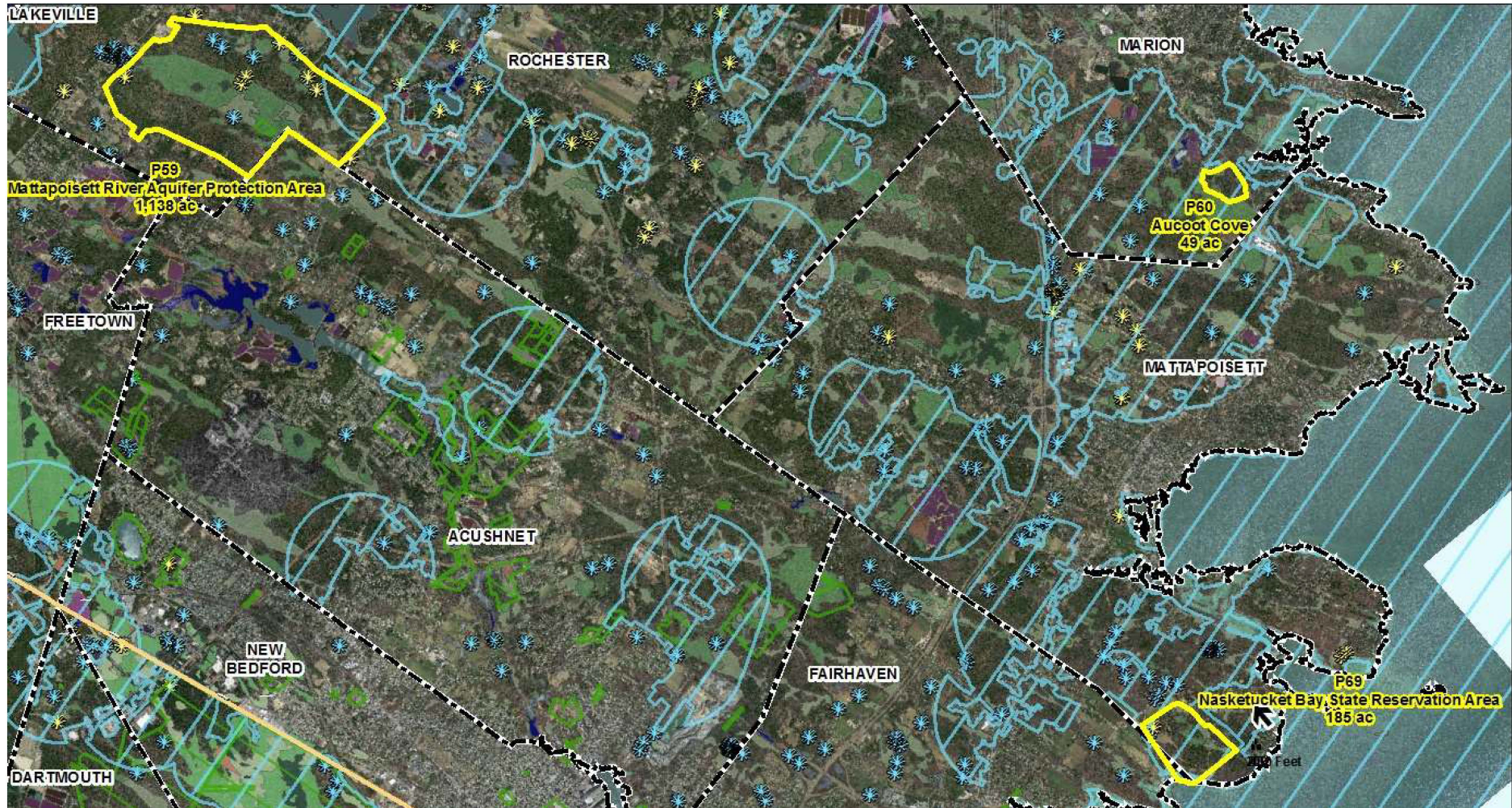


Figure 9. Protection opportunities in Marion and Mattapoisett. Scale = 1:50,000.

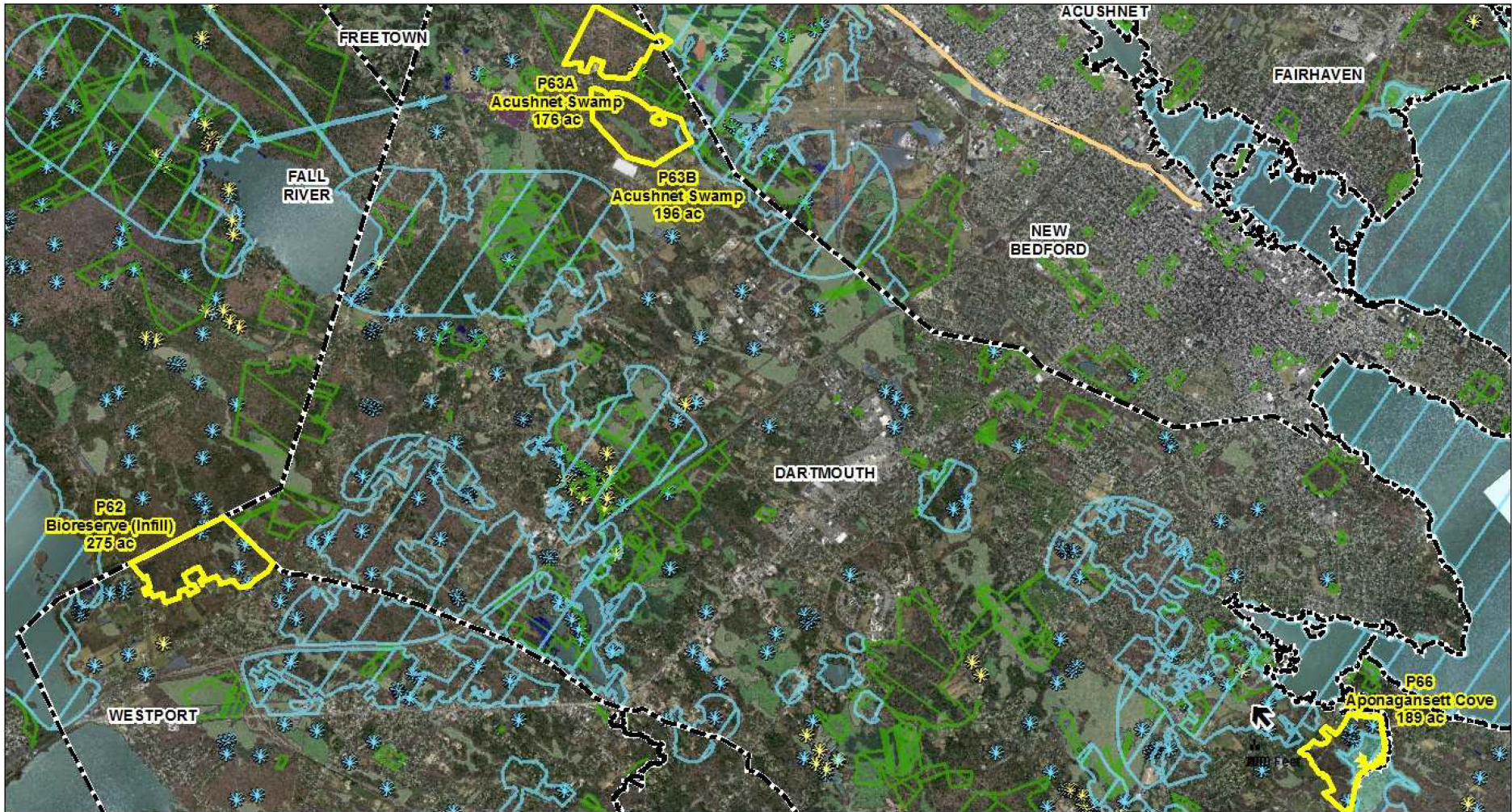


Figure 10. Protection opportunities in Dartmouth, New Bedford, and Westport. Scale = 1:50,000.



Figure 11. Area P9, Gobi Property. Scale = 1:7,500.



Figure 12. Area P14, Municipal Water Source and Future Well Site. Scale = 1:5,000.





Figure 13. Area P17, Canoe River ACEC (MAPC Region). Scale = 1:2,500.

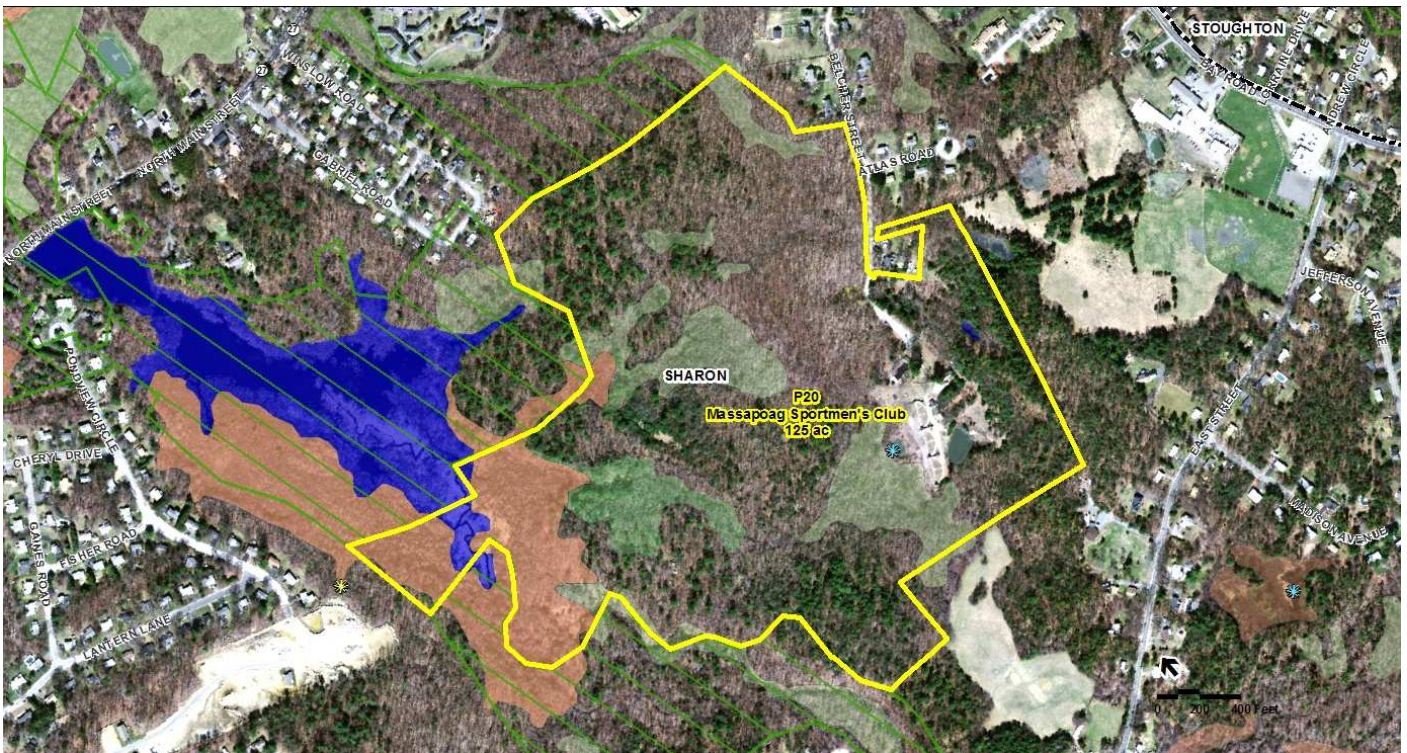


Figure 14. Area P20, Massapoag Sportsmen's Club. Scale = 1:5,000.



Figure 15. Area P22, Sreda Property. Scale = 1:5,000.



Figure 16. Area P24, Morse Farm. Scale = 1:2,500.

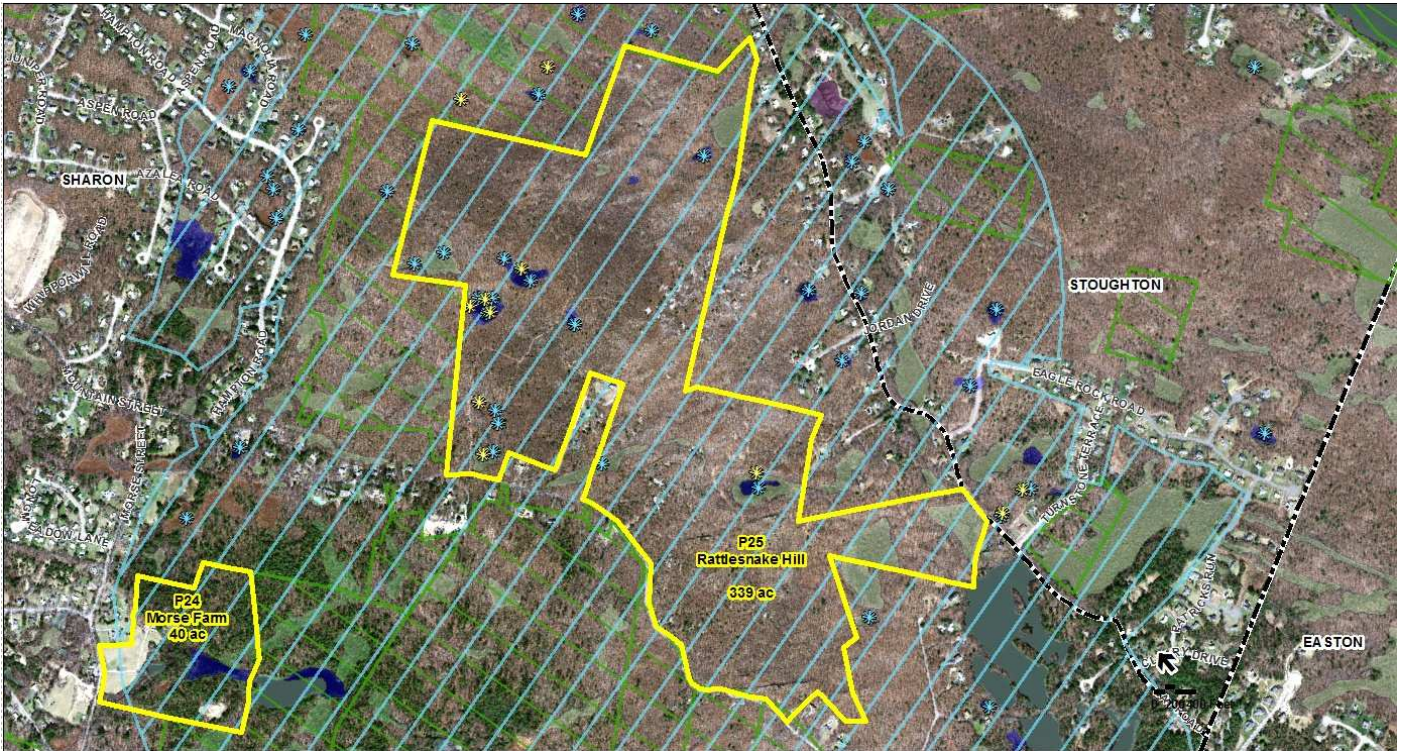


Figure 17. Area P25, Rattlesnake Hill. Scale = 1:10,000.

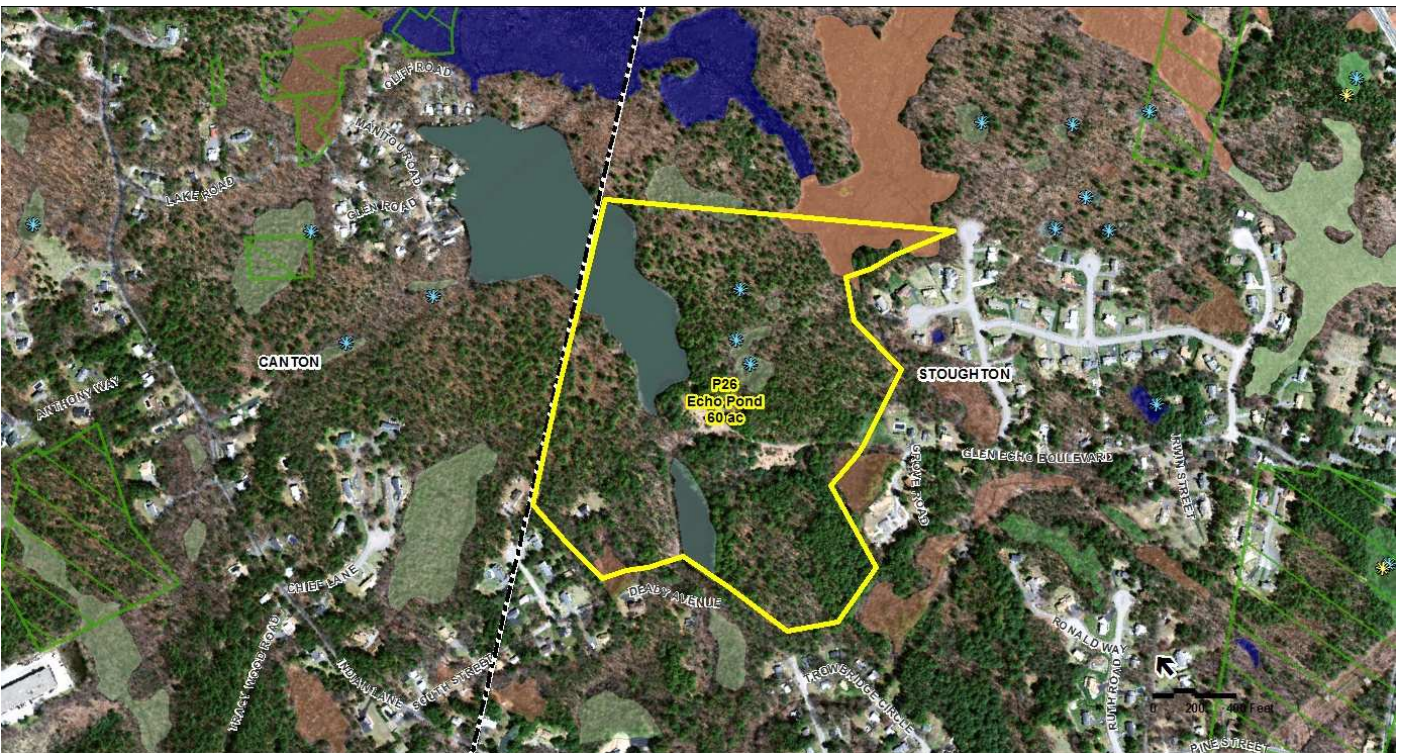


Figure 18. Area P26, Echo Pond. Scale = 1:5,000.



Figure 19. Area P28, Benson Pond. Scale = 1:5,000.

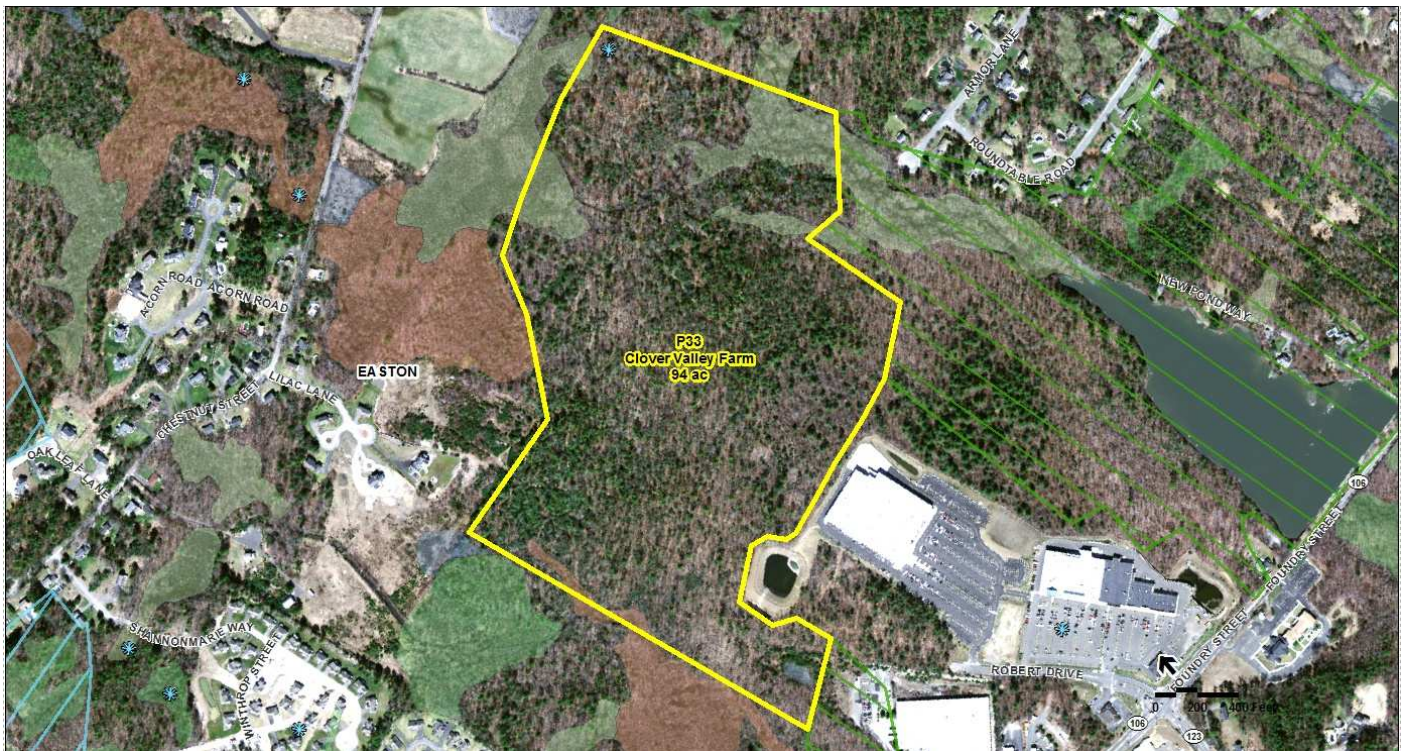


Figure 20. Area P33, Clover Valley Farm. Scale = 1:5,000.

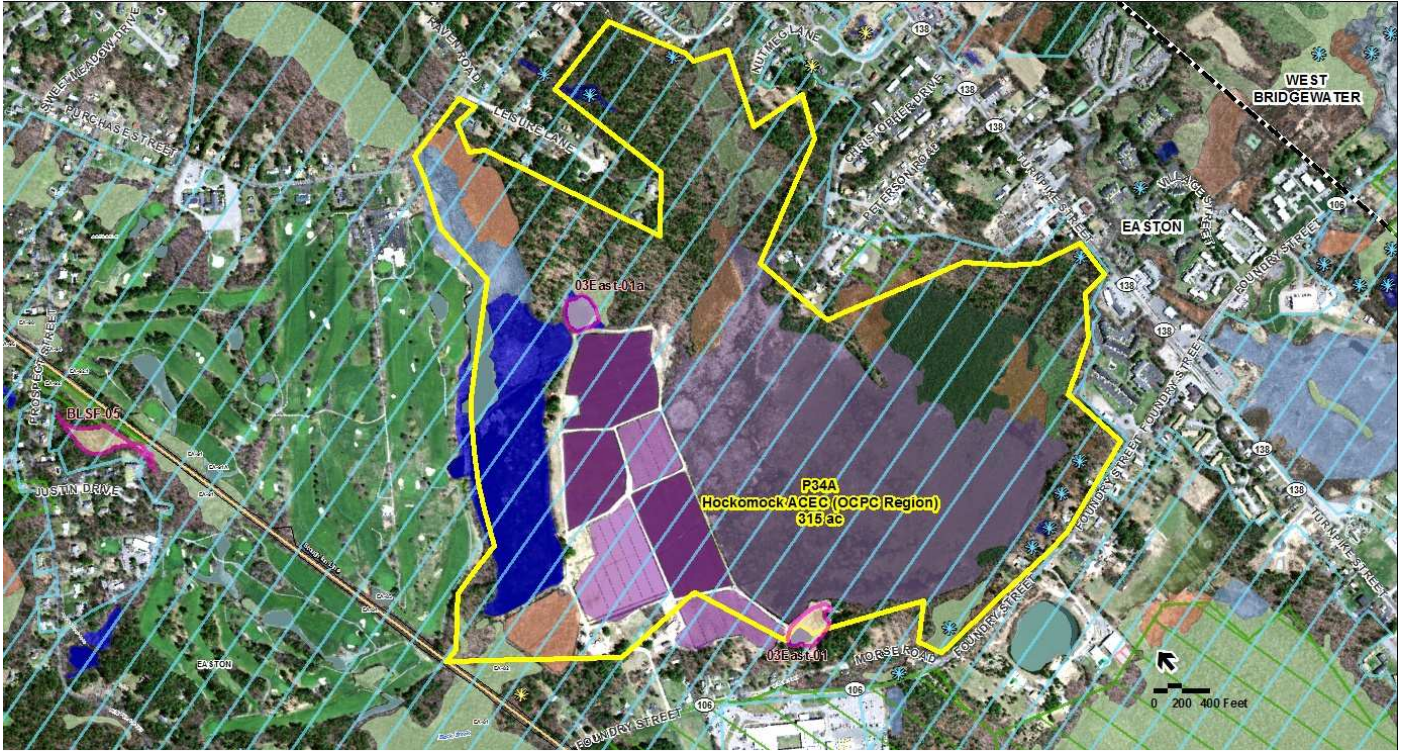


Figure 21. Area P34A, Hockomock ACEC (OCPC Region). Scale = 1:7,500.

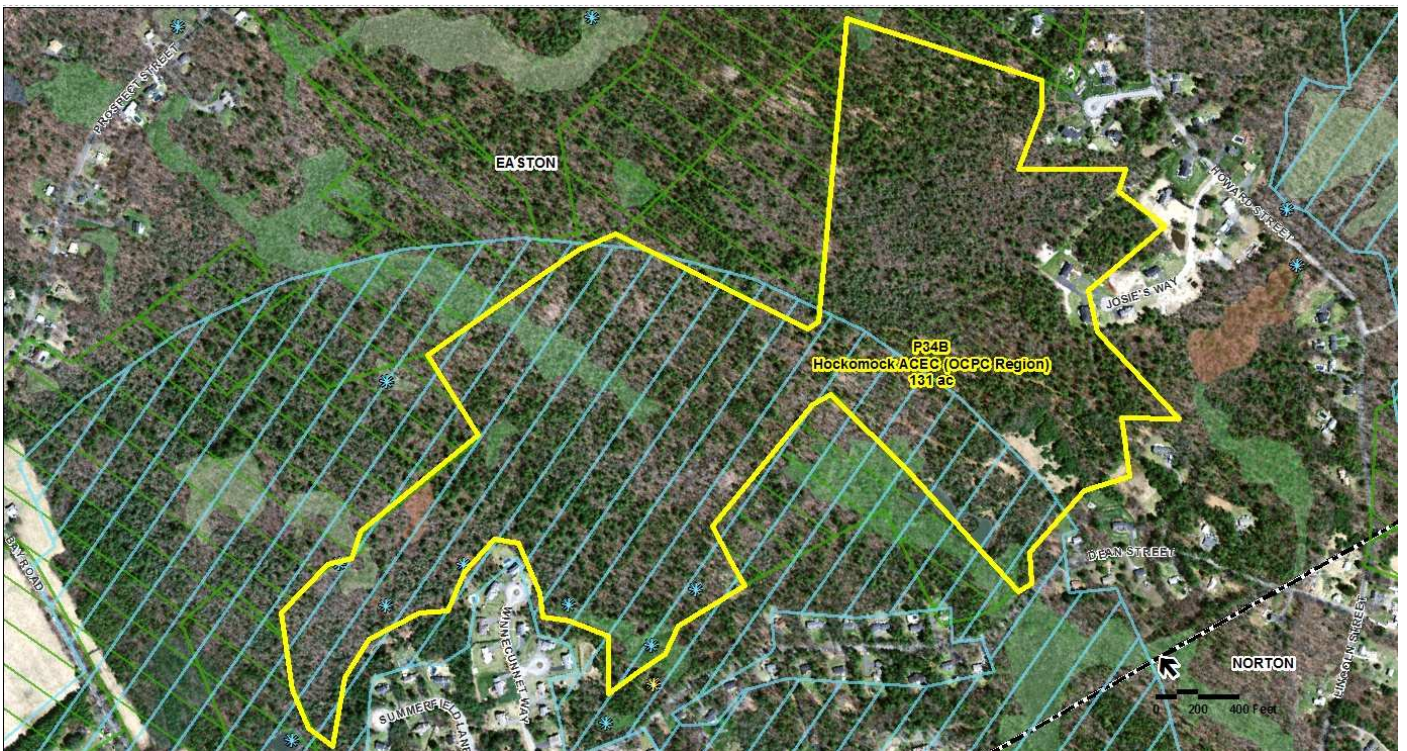


Figure 22. Area P34B, Hockomock ACEC (OCPC Region). Scale = 1:5,000.

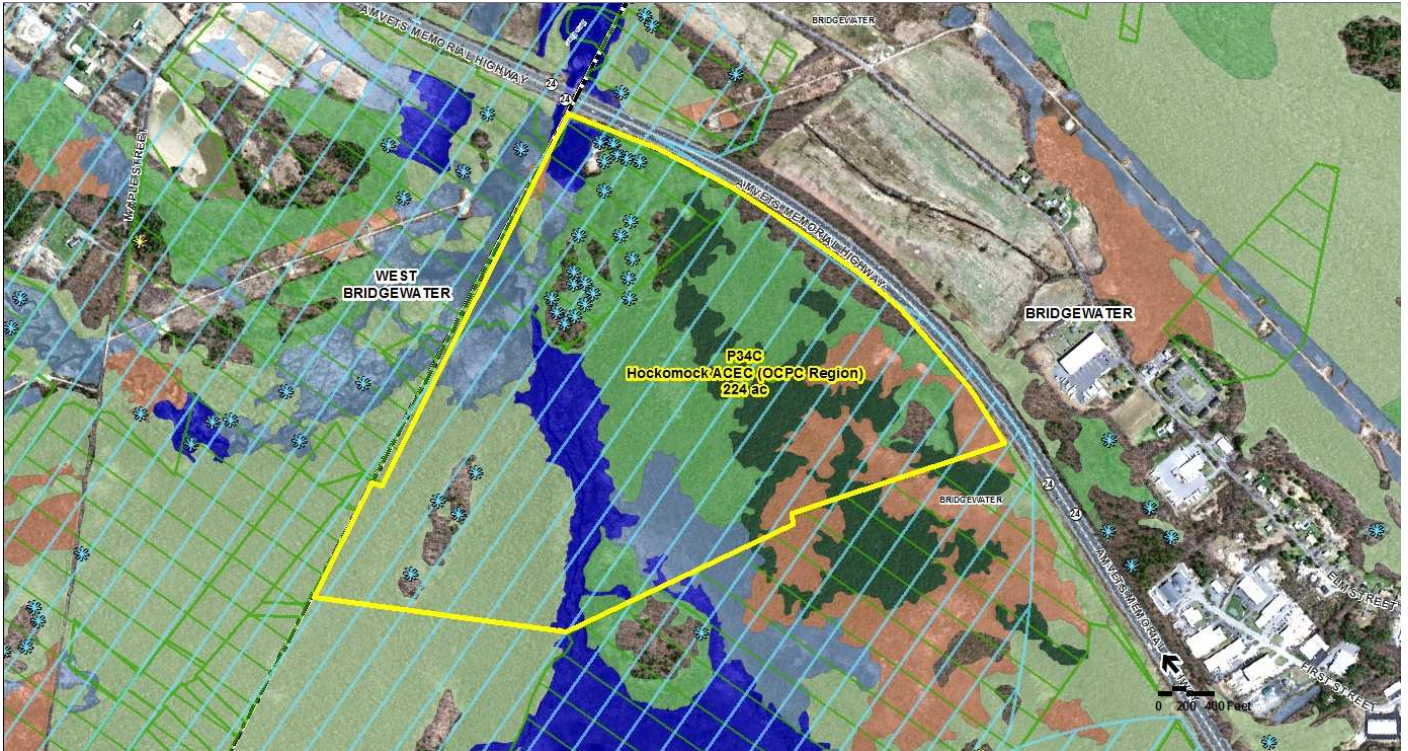


Figure 23. Area P34B, Hockomock ACEC (OCPC Region). Scale = 1:7,500.

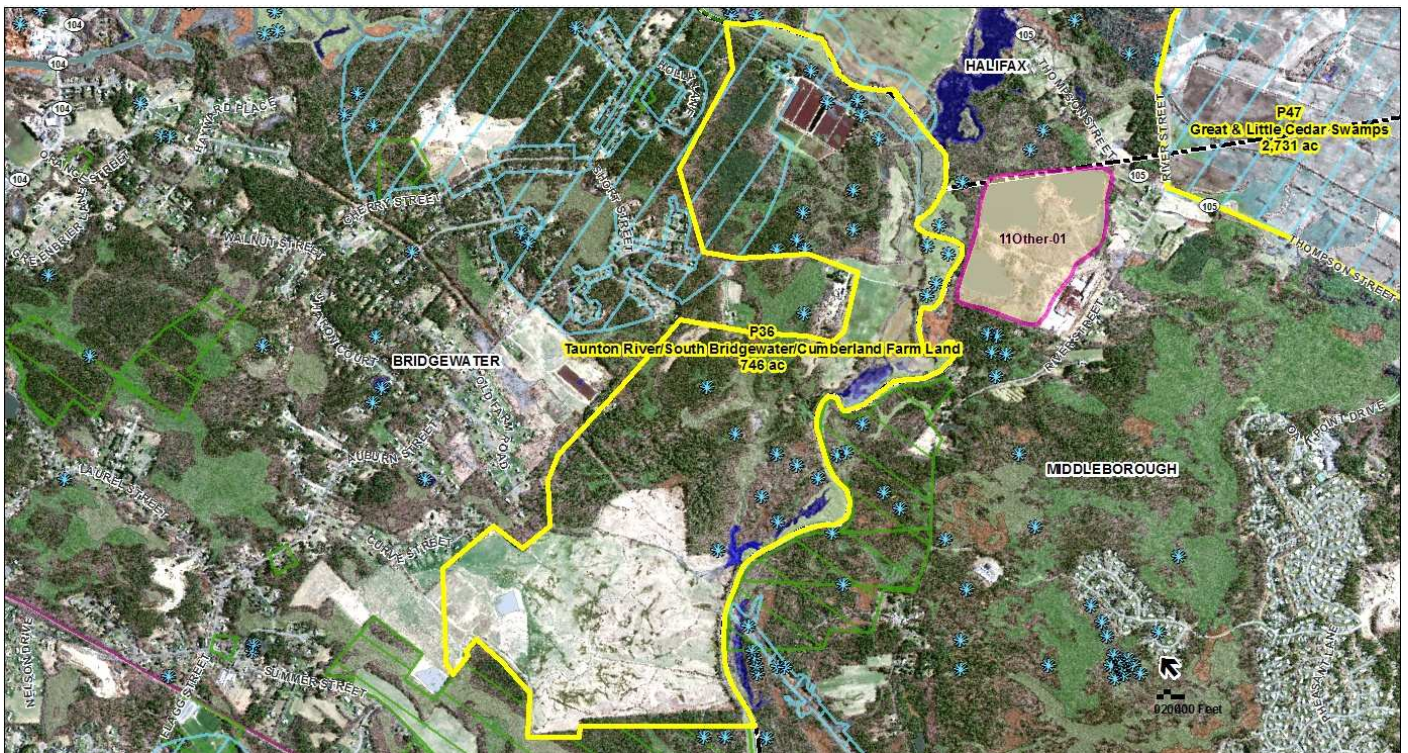


Figure 24. Area P36, Taunton River/South Bridgewater/Cumberland Farm Land. Scale = 1:15,000.

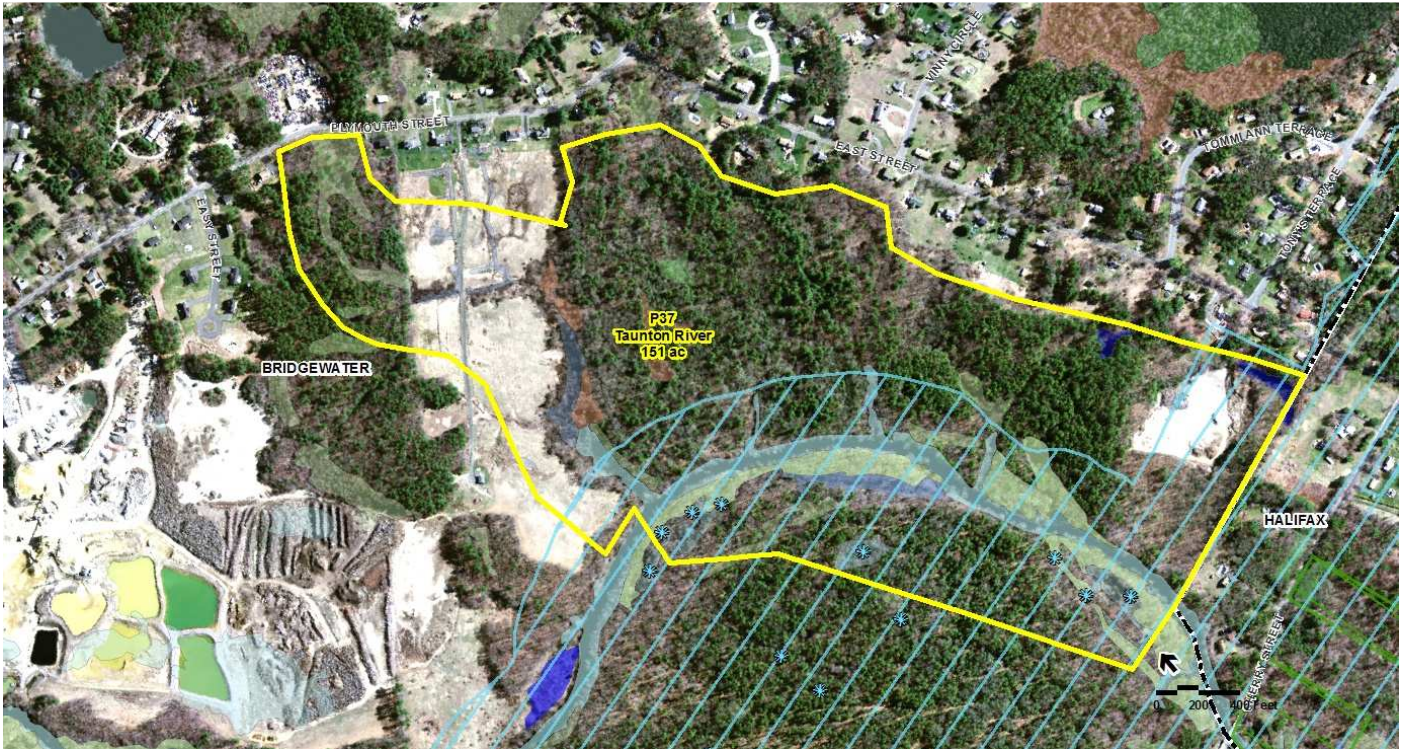


Figure 25. Area P37, Taunton River. Scale = 1:5,000.



Figure 26. Area P38, Bird Street Sanctuary. Scale = 1:5,000.



Figure 27. Area P40, Southworth Pond and Lipsky Fields. Scale = 1:5,000.



Figure 28. Area P46A, Upper Taunton River. Scale = 1:7,500.



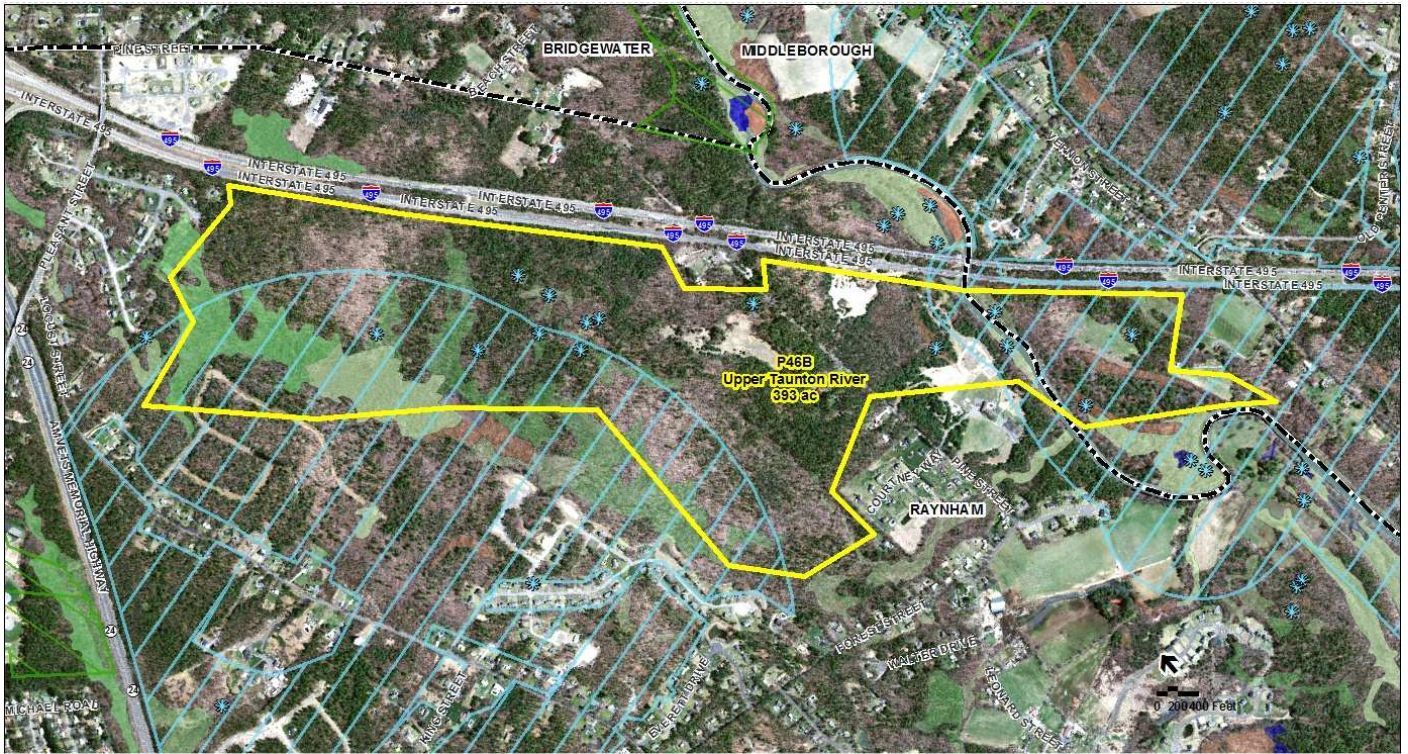


Figure 29. Area P46B, Upper Taunton River. Scale = 1:10,000.

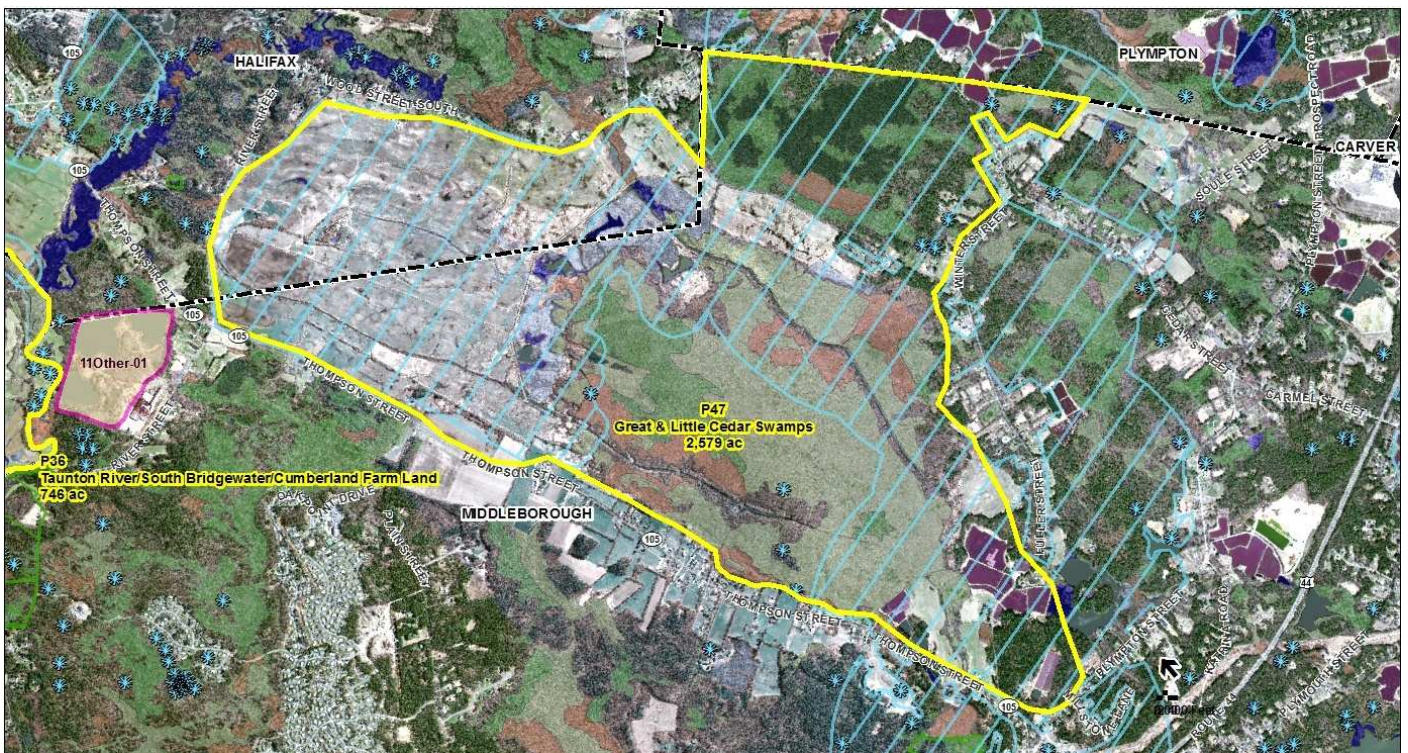


Figure 30. Area P47, Great & Little Cedar Swamps. Scale = 1:20,000.

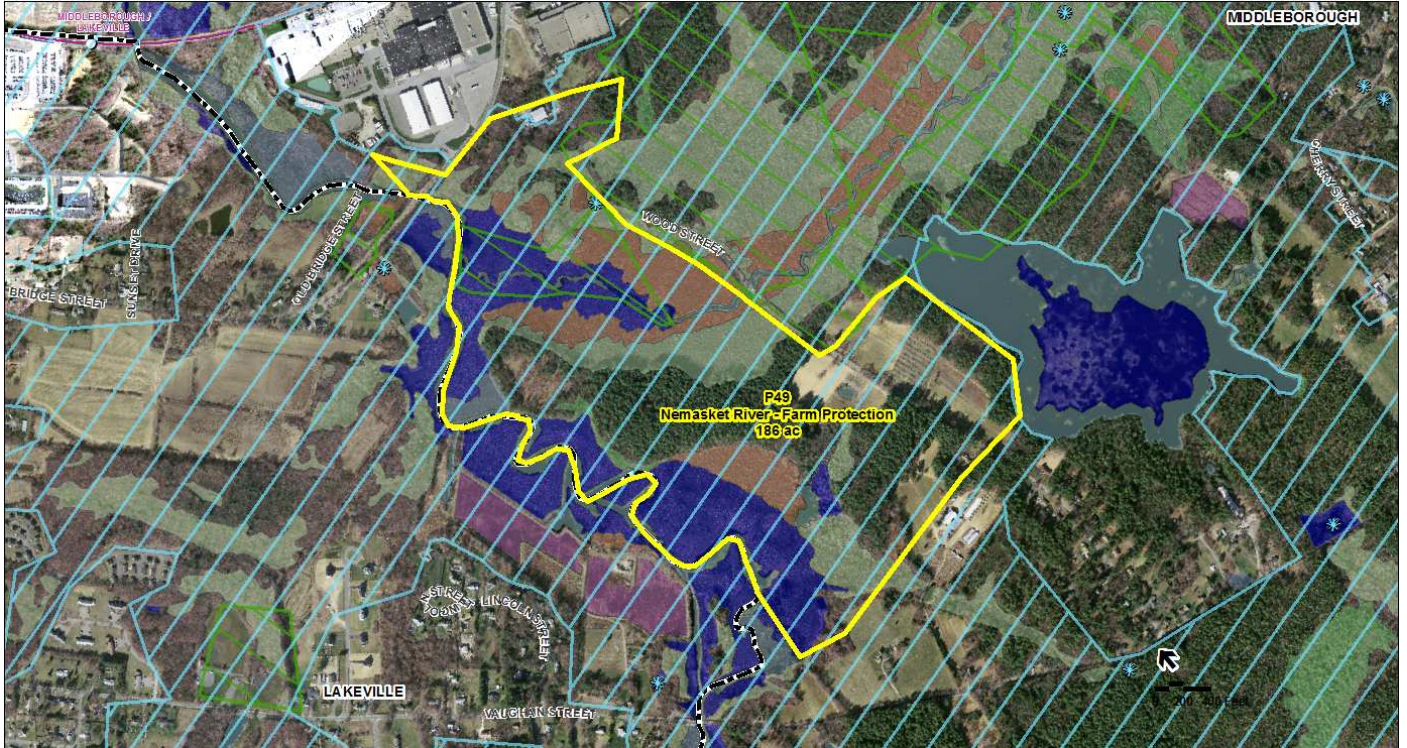


Figure 31. Area P49, Nemasket River - Farm Protection. Scale = 1:7,500.



Figure 32. Area P50A, Green Heart Corridor. Scale = 1:15,000.

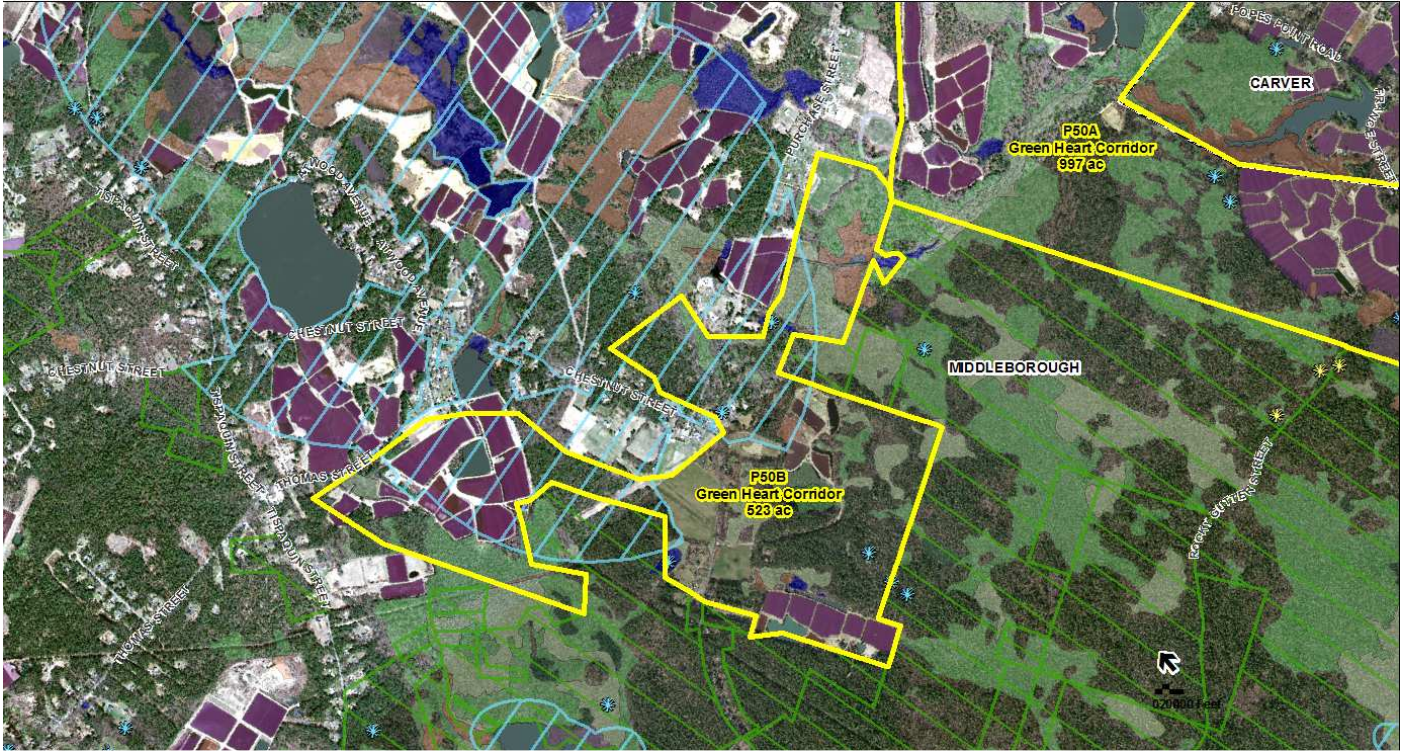


Figure 33. Area P50B, Green Heart Corridor. Scale = 1:15,000.



Figure 34. Area P51, Thatcher Pond. Scale = 1:5,000.

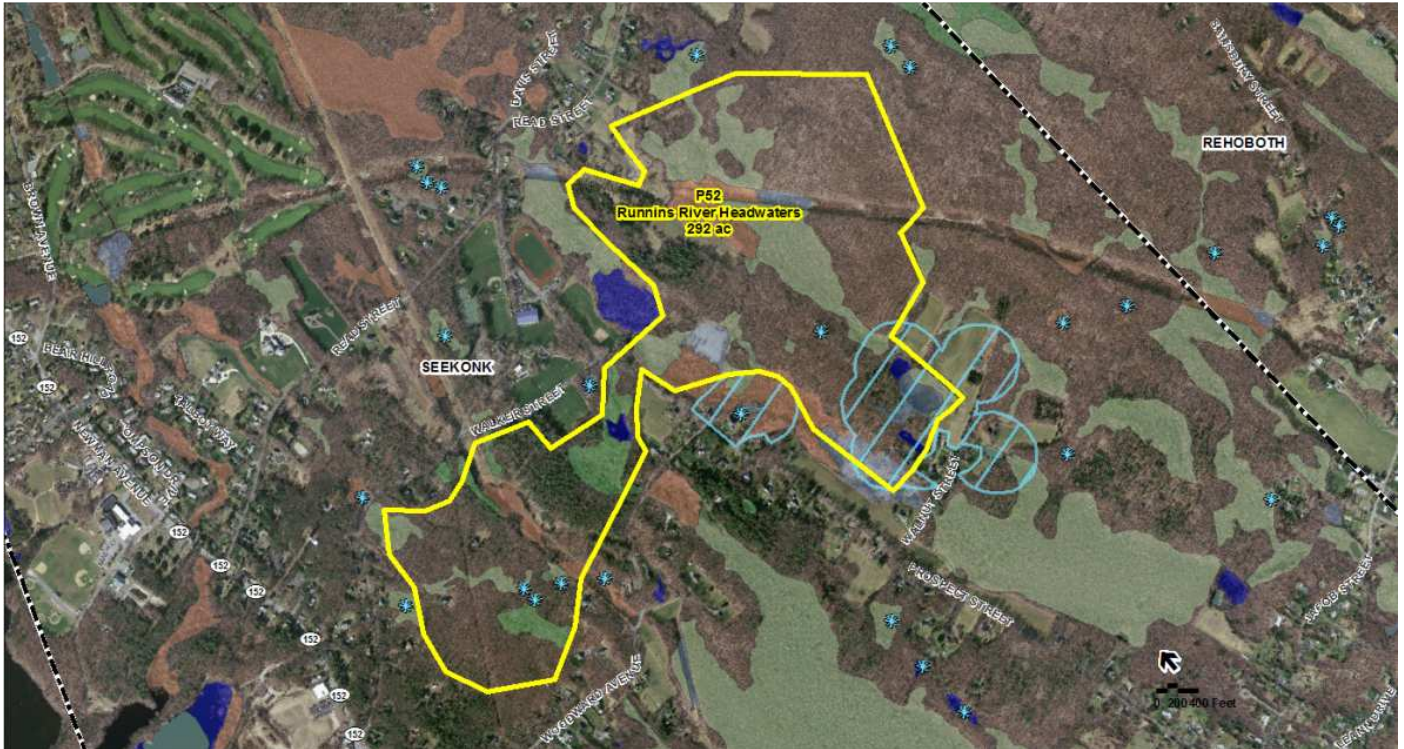


Figure 35. Area P52, Runnins River Headwaters. Scale = 1:10,000.



Figure 36. Area P53, Palmer River Aquifer/Zone II Protection Area. Scale = 1:5,000.

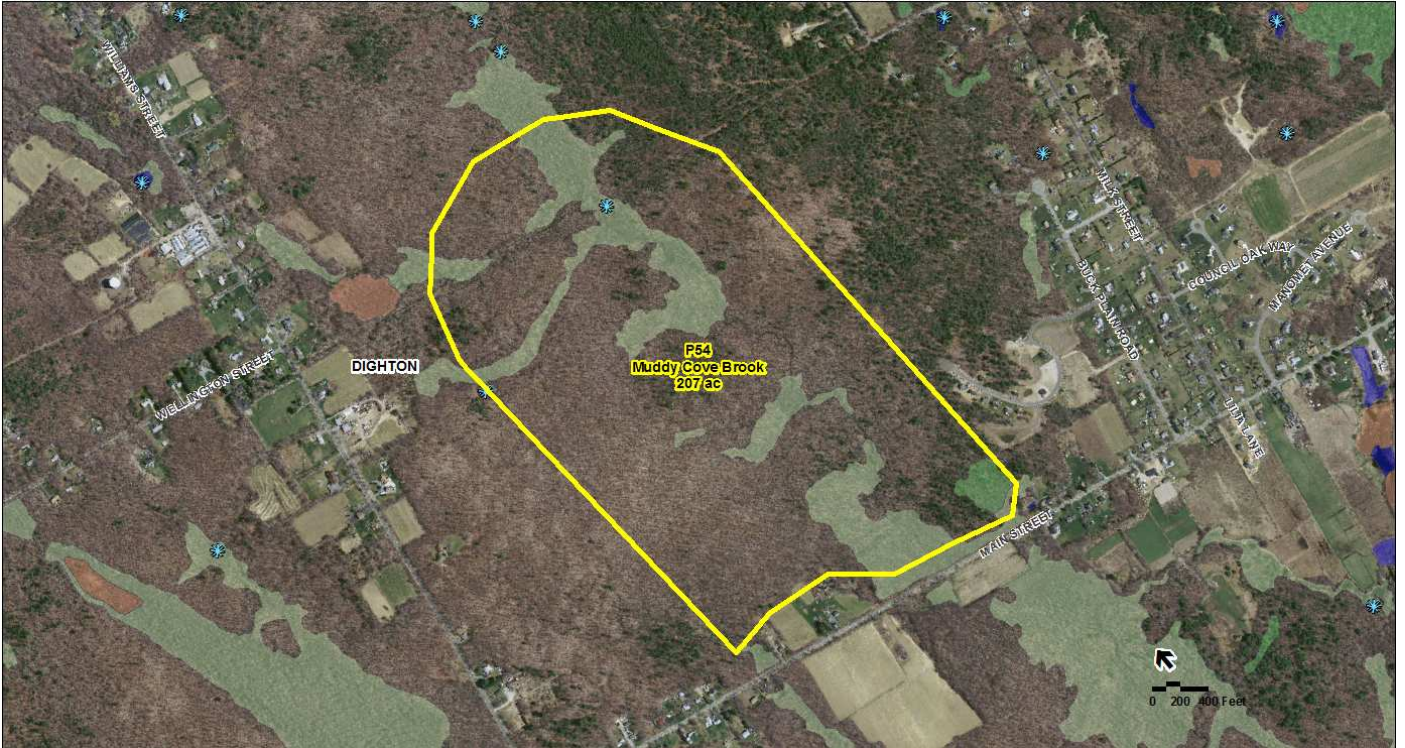


Figure 37. Area P54, Muddy Cove Brook. Scale = 1:7,500.

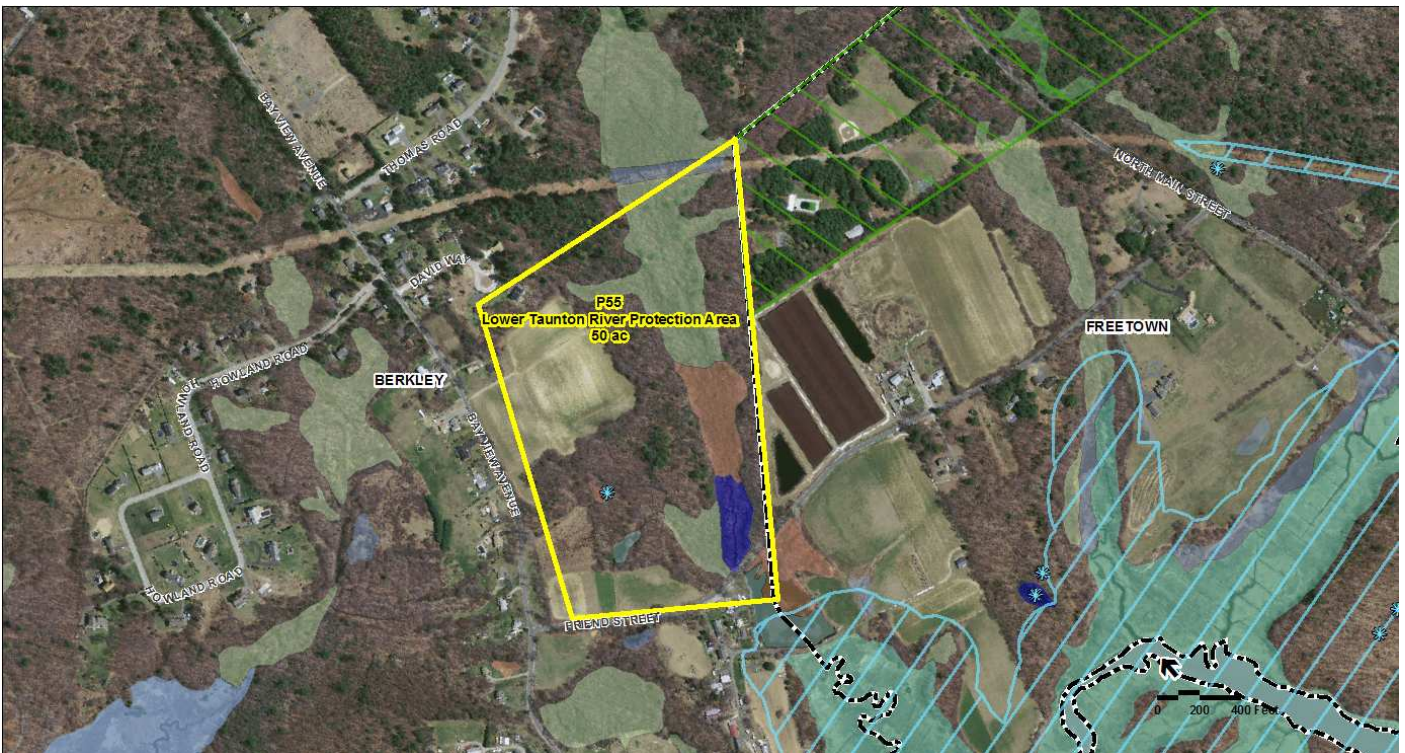


Figure 38. Area P55, Lower Taunton River Protection Area. Scale = 1:5,000.



Figure 39. Area P56, Acidic Fen. Scale = 1:7,500.

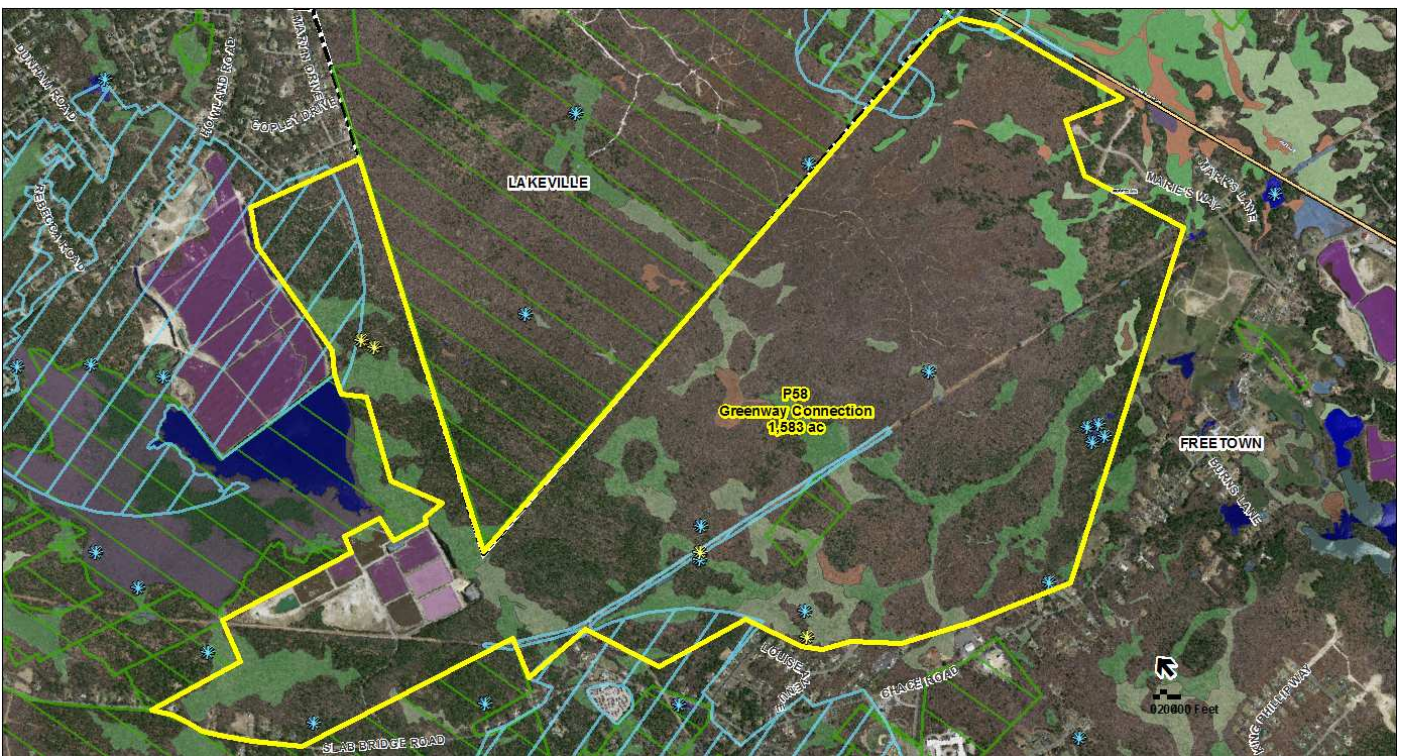


Figure 40 Area P58, Greenway Connection. Scale = 1:15,000.

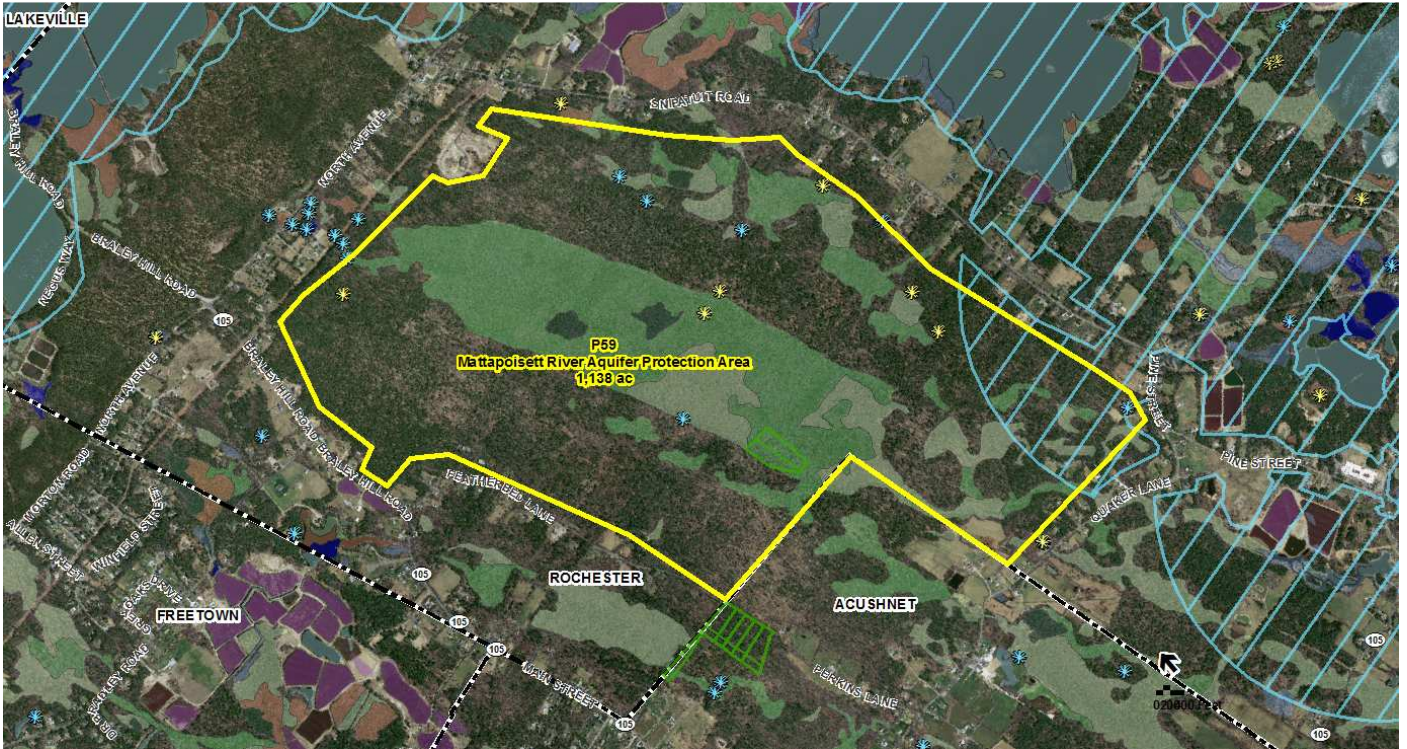


Figure 41. Area P59, Mattapoissett River Aquifer Protection Area. Scale = 1:15,000.



Figure 42. Area P60, Aucoot Cove. Scale = 1:2,500.



Figure 43. Area P61, Pine Barrens/Aquifer Protection Area. Scale = 1:15,000.

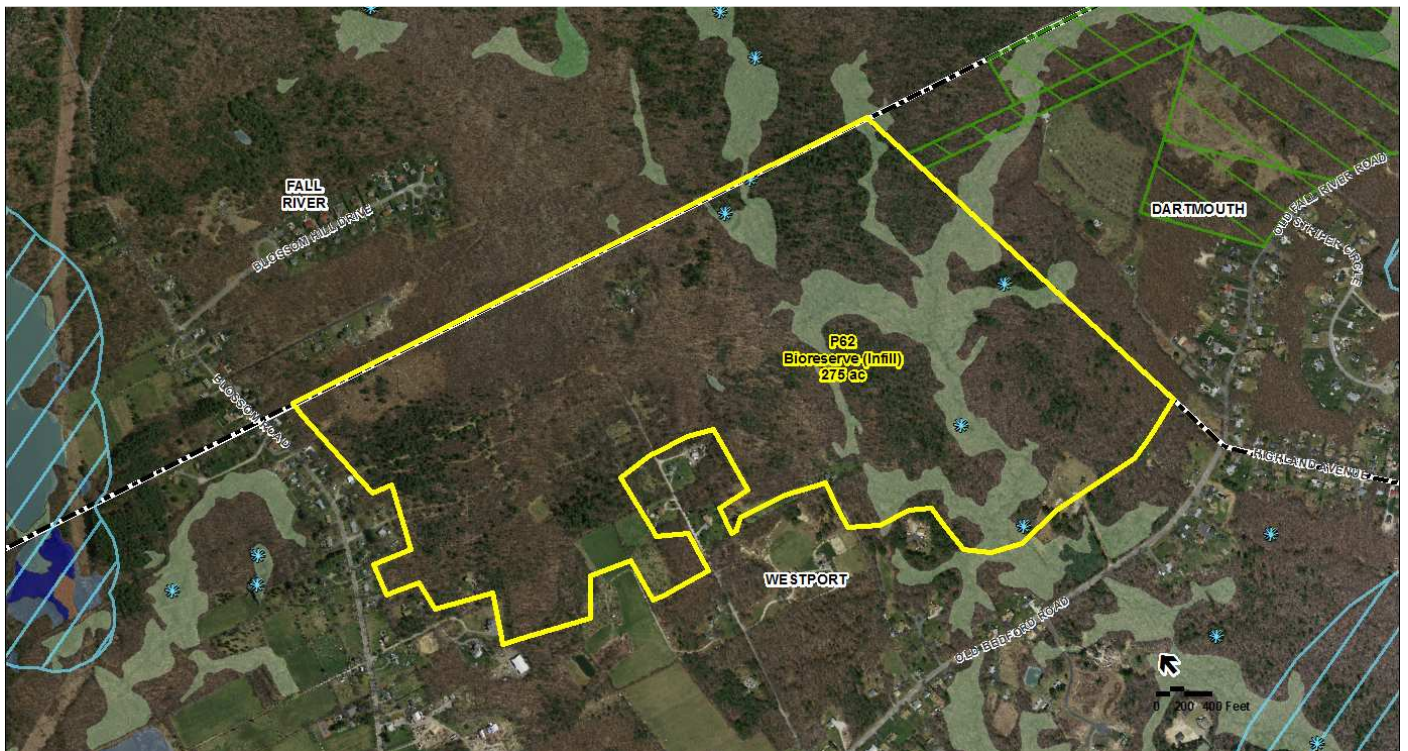


Figure 44. Area P62, Bioreserve (Infill). Scale = 1:7,500.



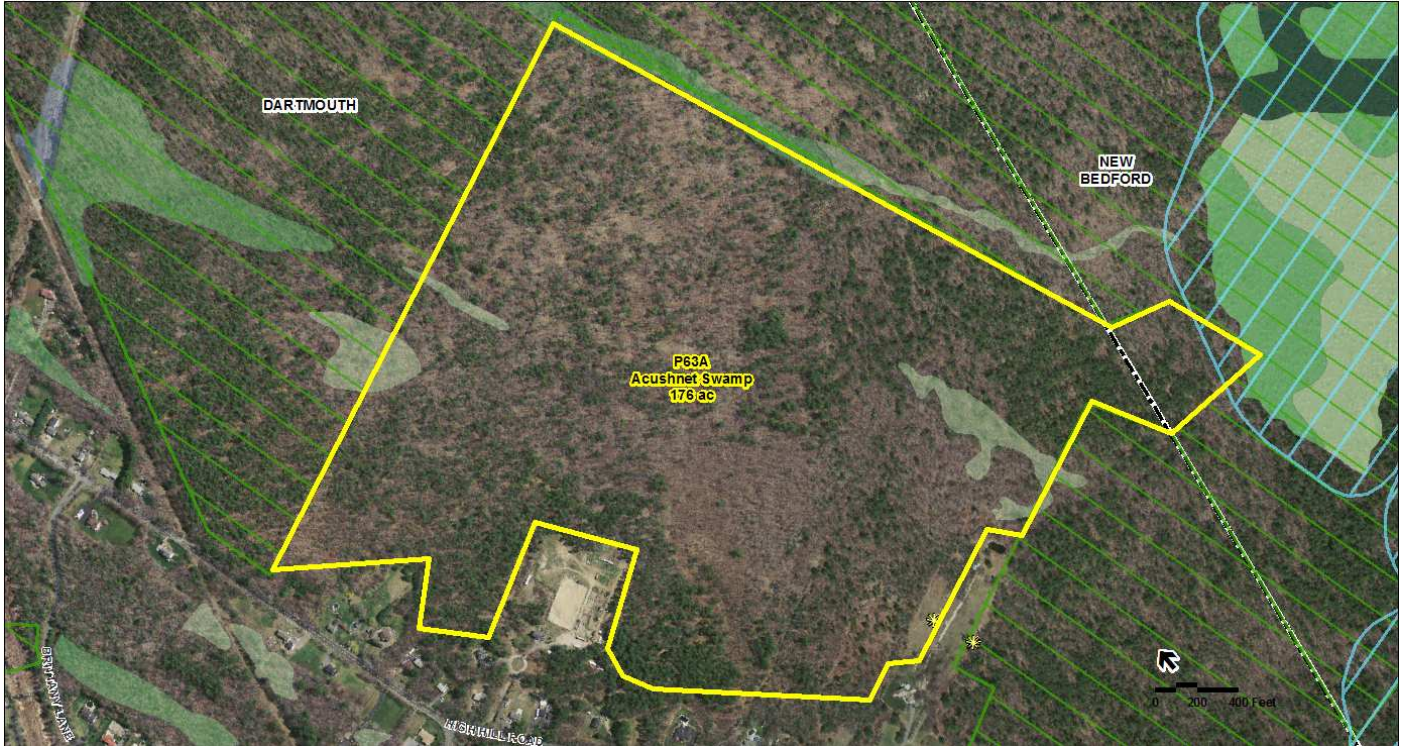


Figure 45. Area P63A, Acushnet Swamp. Scale = 1:5,000.

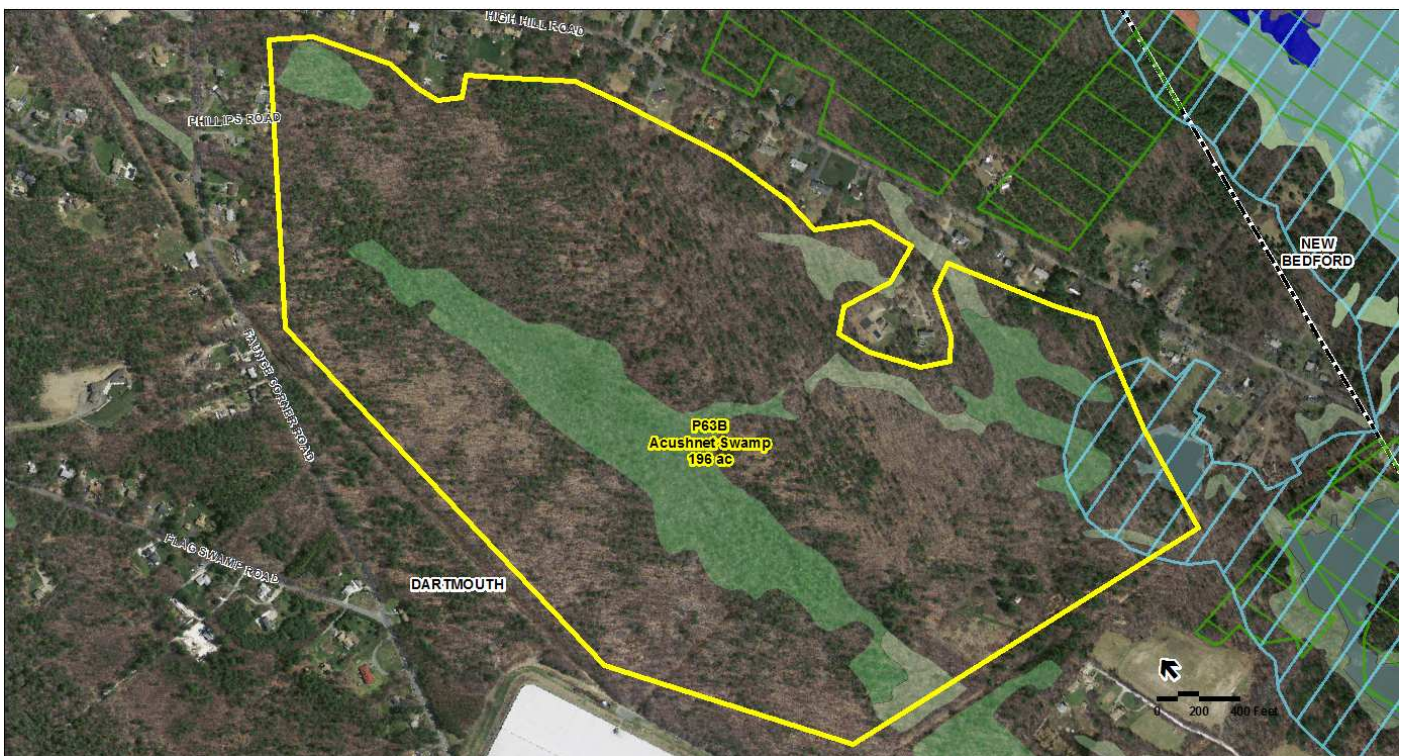


Figure 46. Area P63B, Acushnet Swamp. Scale = 1:5,000

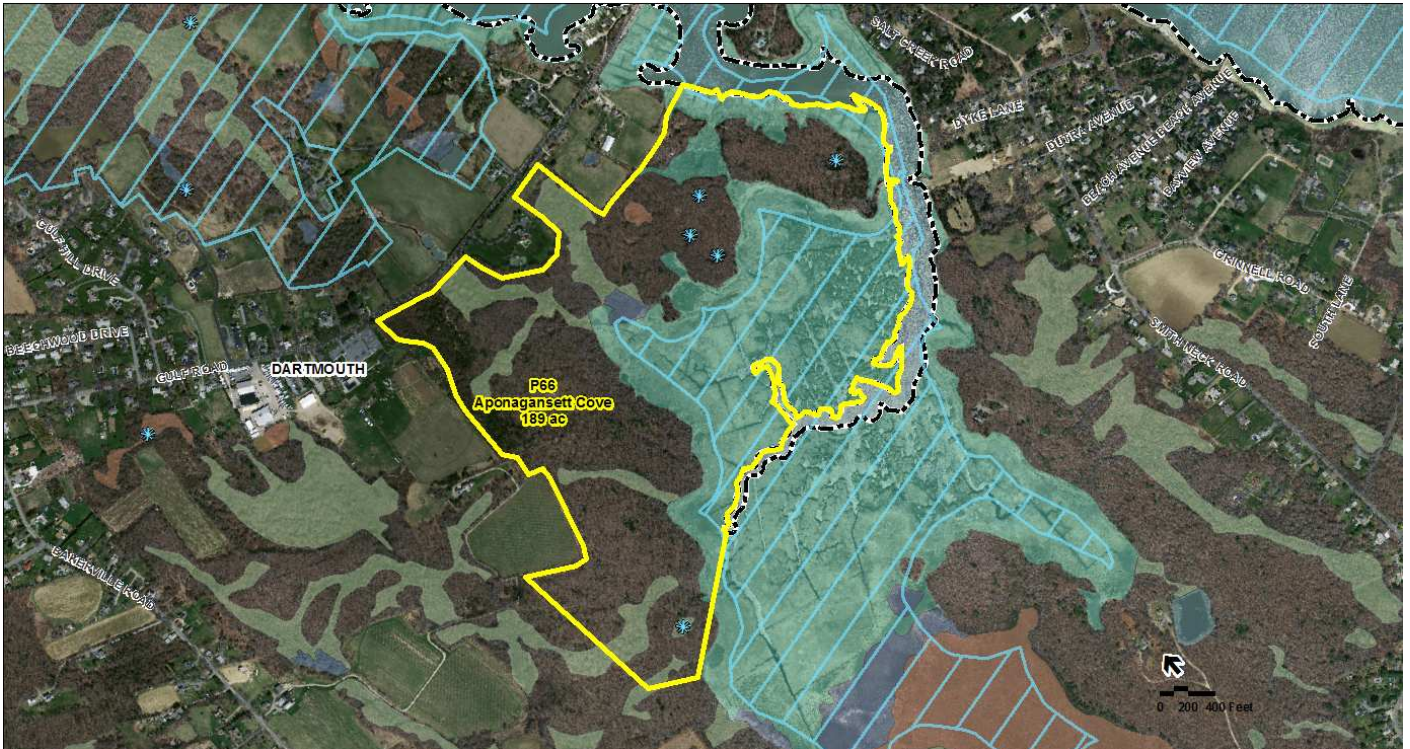


Figure 47. Area P66, Aponagansett Cove. Scale = 1:7,500.

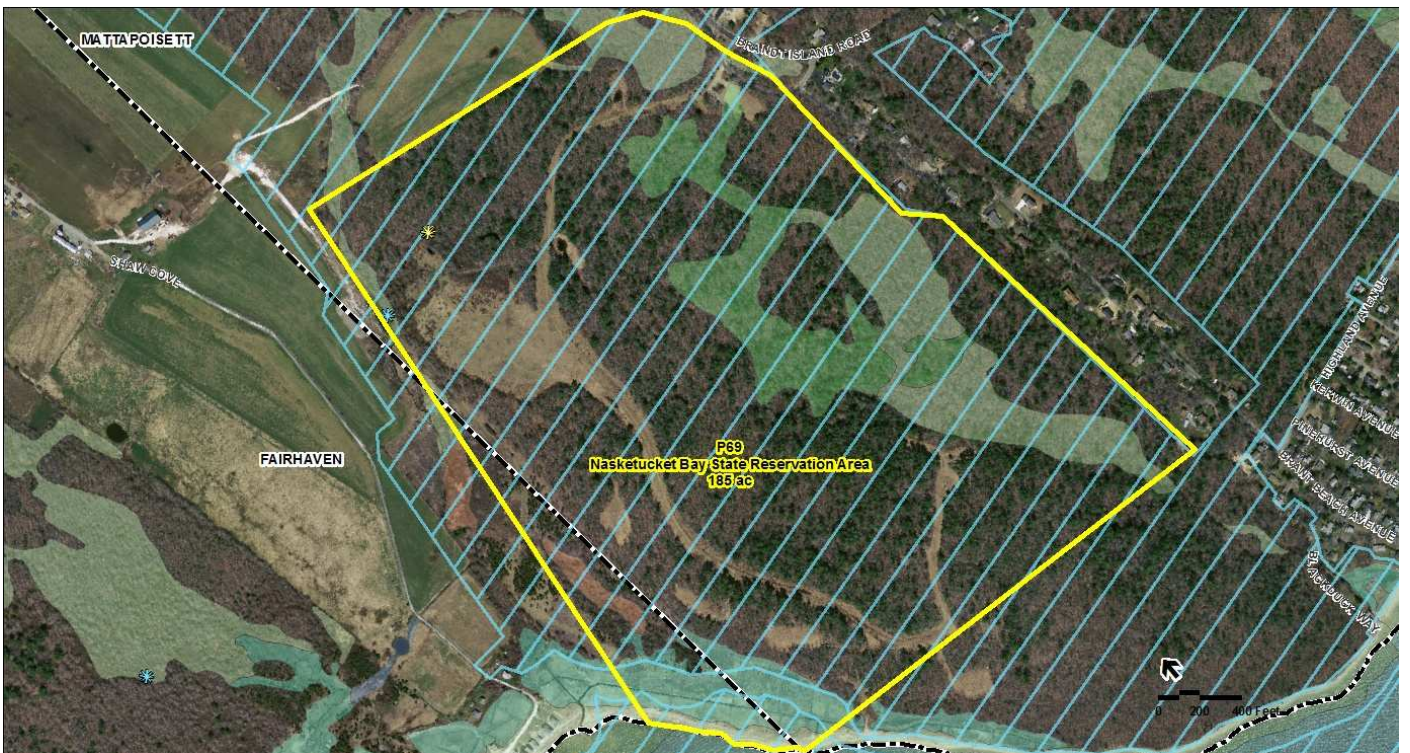


Figure 48. Area P69, Nasketucket Bay State Reservation Area. Scale = 1:5,000.