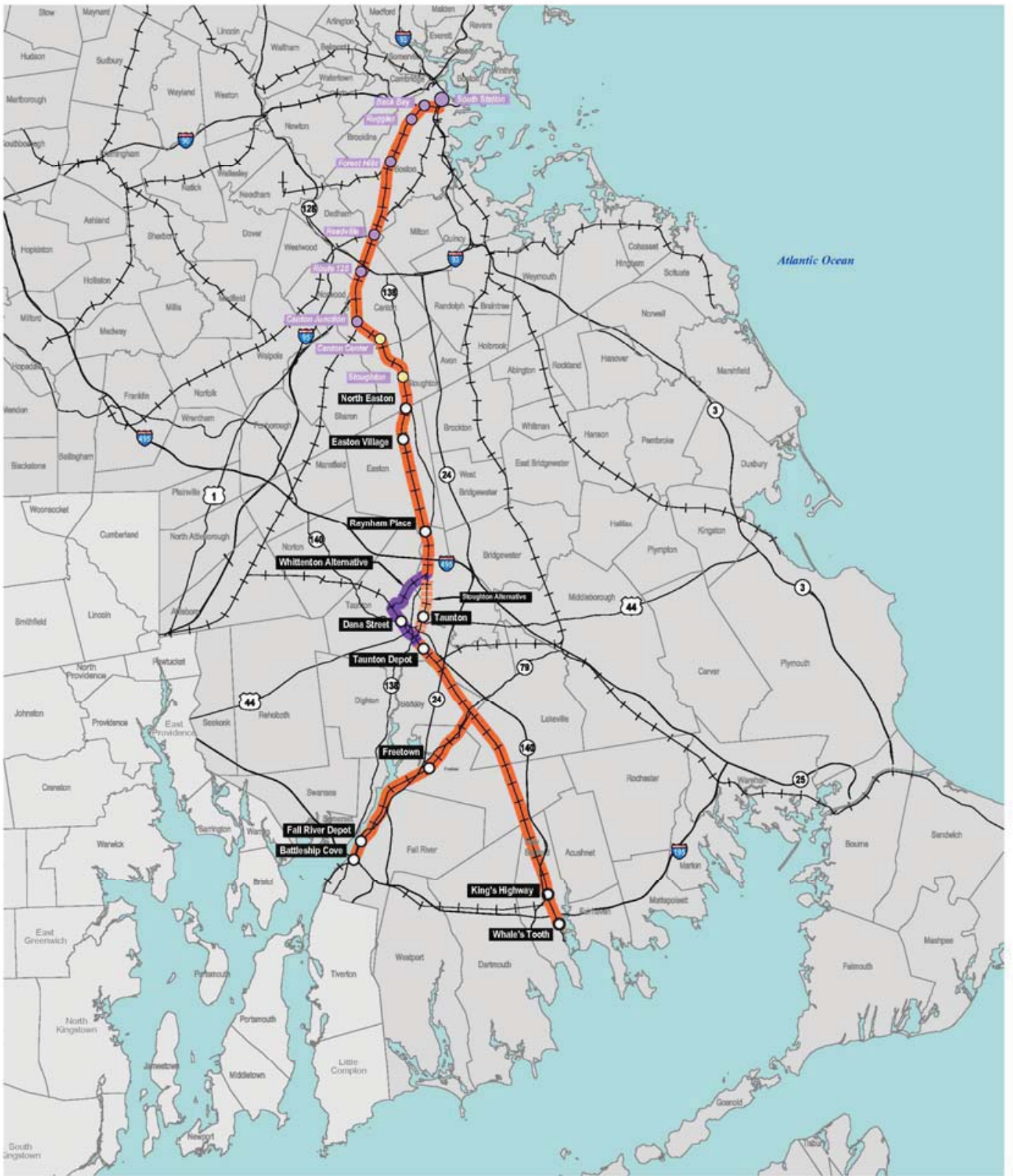


\\mabosdata\transfer\10111_Whittenton_Alternative_Route.dwg Printing Date: 12/20/2012 3:22 PM



- Legend**
-  Whittenton Alternative
 -  Stoughton Alternative
 -  Existing Stations
 -  Proposed Stations
 -  Existing Stations to be Reconstructed

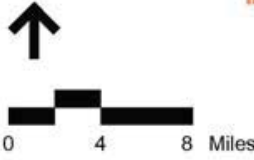
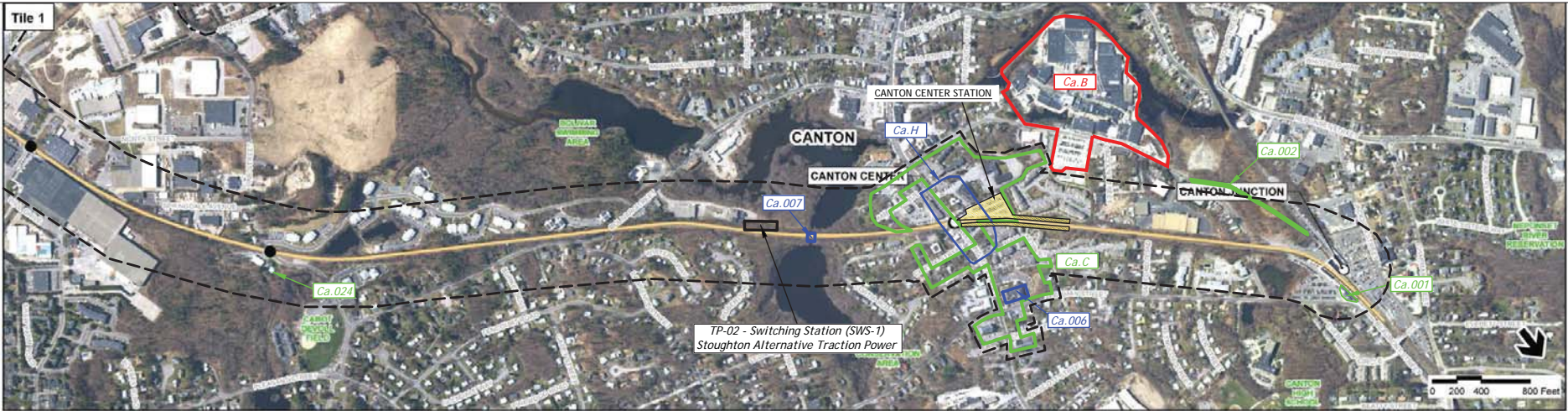


Figure 4.8-1
Stoughton Alternative and Whittenton Alternative



20201113 10:00:00 AM C:\Users\jgibson\Documents\GIS\Map_Ca_2\MapData_WeirJunc_Canton_4x6.mxd

Legend

- Proposed Rail Alternative
- Grade Crossings
- Proposed Station Site
- Existing Layover Facilities
- MBTA Commuter Rail Station
- Town Boundaries
- Area of Potential Effect for Above Ground Properties
- NB.052 Properties Determined Eligible for Listing in the National Register of Historic Places as part of the South Coast Rail Project
- NB.052 Properties Previously Listed or Determined Eligible for Listing in the National Register of Historic Places, National Historic Landmarks, or Properties Listed in the State Register of Historic Places
- NB.052 Properties Recommended Not Eligible for National Register Listing (including properties demolished or outside the APE)

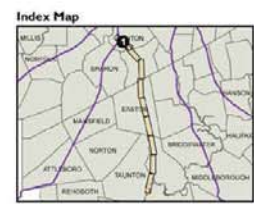


Figure 4.8-2
Stoughton Line
Weir Junction to Canton Junction



Legend

- Proposed Rail Alternative
- Grade Crossings
- Proposed Station Site
- Existing Layover Facilities
- MBTA Commuter Rail Station
- Town Boundaries

- Area of Potential Effect for Above Ground Properties
- NB.052** Properties Determined Eligible for Listing in the National Register of Historic Places as part of the South Coast Rail Project
- NB.052** Properties Previously Listed or Determined Eligible for Listing in the National Register of Historic Places, National Historic Landmarks, or Properties Listed in the State Register of Historic Places
- NB.052** Properties Recommended Not Eligible for National Register Listing (including properties demolished or outside the APE)

Index Map



Figure 4.8-3
Stoughton Line
Weir Junction to Canton Junction



- Legend**
- Proposed Rail Alternative
 - Grade Crossings
 - Proposed Station Site
 - Existing Layover Facilities
 - MBTA Commuter Rail Station
 - Town Boundaries
 - Area of Potential Effect for Above Ground Properties
 - Properties Determined Eligible for Listing in the National Register of Historic Places as part of the South Coast Rail Project
 - Properties Previously Listed or Determined Eligible for Listing in the National Register of Historic Places, National Historic Landmarks, or Properties Listed in the State Register of Historic Places
 - Properties Recommended Not Eligible for National Register Listing (including properties demolished or outside the APE)

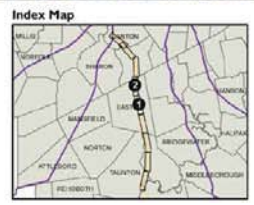


Figure 4.8-4
Stoughton Line
Weir Junction to Canton Junction



Legend

- Proposed Rail Alternative
- Grade Crossings
- Proposed Station Site
- Existing Layover Facilities
- MBTA Commuter Rail Station
- Town Boundaries
- Area of Potential Effect for Above Ground Properties
- NB.052** Properties Determined Eligible for Listing in the National Register of Historic Places as part of the South Coast Rail Project
- NB.052** Properties Previously Listed or Determined Eligible for Listing in the National Register of Historic Places, National Historic Landmarks, or Properties Listed in the State Register of Historic Places
- NB.052** Properties Recommended Not Eligible for National Register Listing (including properties demolished or outside the APE)

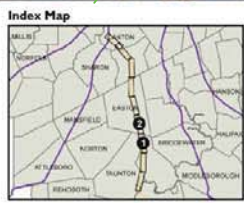


Figure 4.8-5
Stoughton Line
Weir Junction to Canton Junction



- Legend**
- Proposed Rail Alternative
 - Grade Crossings
 - Proposed Station Site
 - Existing Layover Facilities
 - MBTA Commuter Rail Station
 - Town Boundaries
 - Area of Potential Effect for Above Ground Properties
 - NB.052** Properties Determined Eligible for Listing in the National Register of Historic Places as part of the South Coast Rail Project
 - NB.052** Properties Previously Listed or Determined Eligible for Listing in the National Register of Historic Places, National Historic Landmarks, or Properties Listed in the State Register of Historic Places
 - NB.052** Properties Recommended Not Eligible for National Register Listing (including properties demolished or outside the APE)

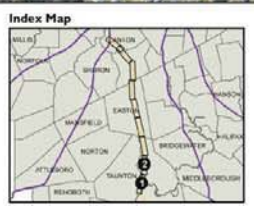
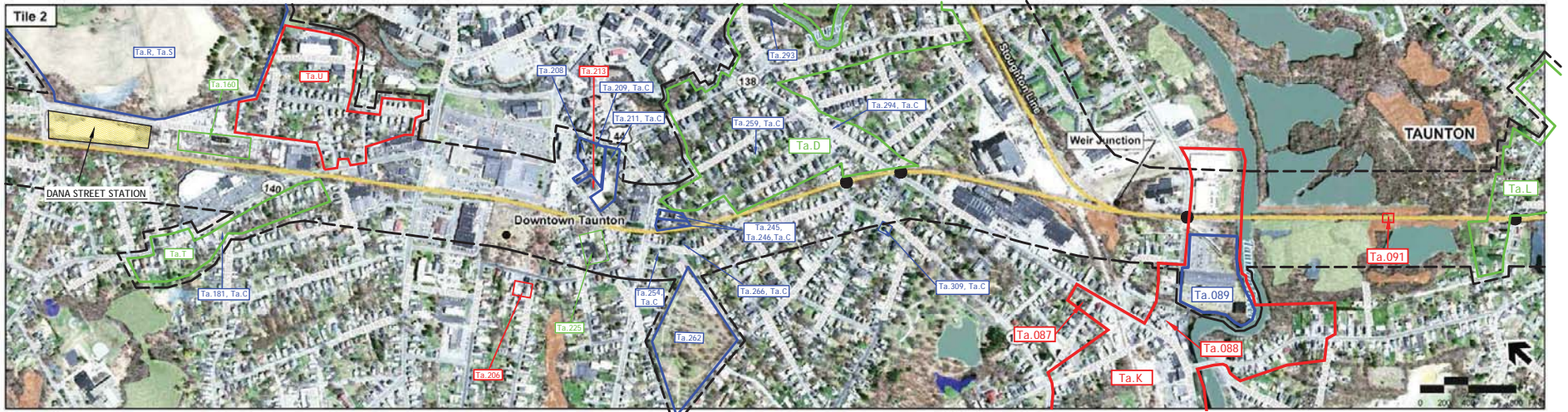


Figure 4.8-6
Stoughton Line
Weir Junction to Canton Junction



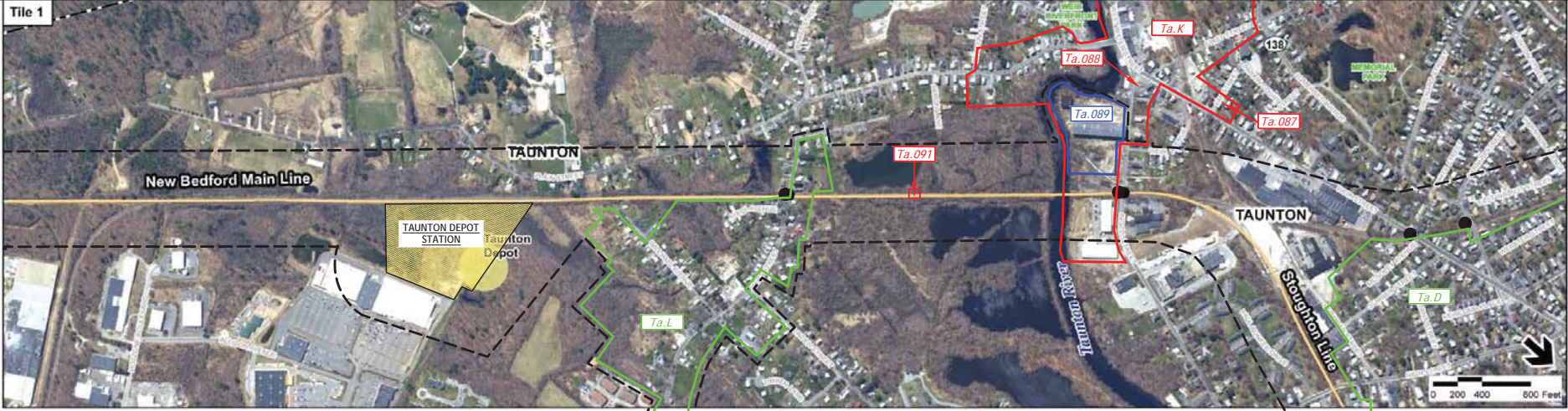


Legend

- Proposed Rail Alternative
- Grade Crossings
- Proposed Station Site
- Existing Layover Facilities
- MBTA Commuter Rail Station
- Town Boundaries
- Area of Potential Effect for Above Ground Properties
- Properties Determined Eligible for Listing in the National Register of Historic Places as part of the South Coast Rail Project
- Properties Previously Listed or Determined Eligible for Listing in the National Register of Historic Places, National Historic Landmarks, or Properties Listed in the State Register of Historic Places
- Properties Recommended Not Eligible for National Register Listing (including properties demolished or outside the APE)



Figure 4.8-8
Whittenton Branch



1/16/2013
 \\ms03p001\101110622\project\ESD\Bene_Ty_TAL\Bene_New_Bedford_Aerial.mxd

Legend




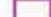






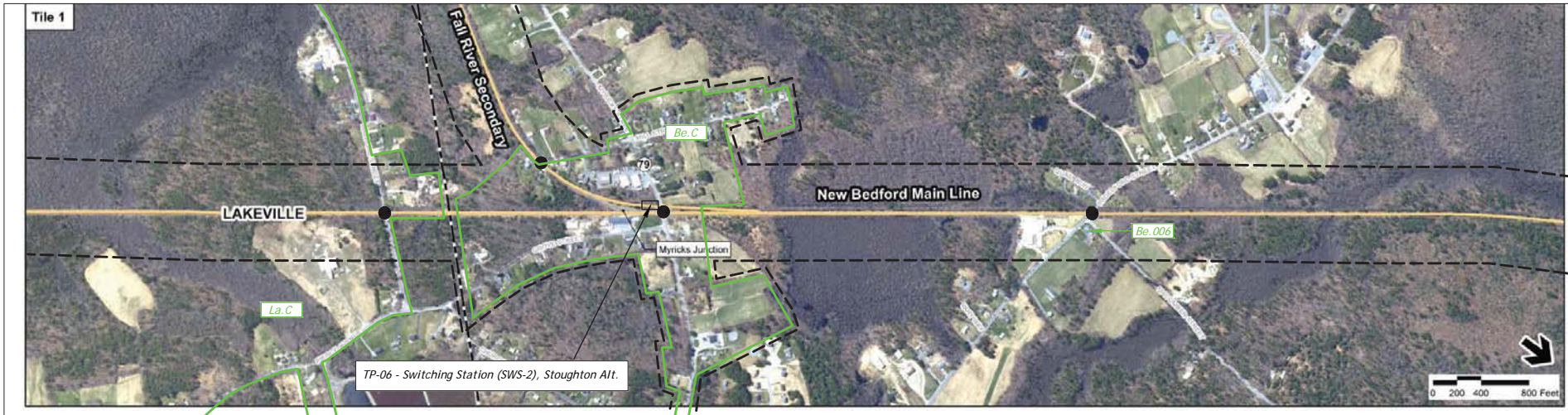
-  Proposed Rail Alternative
-  Grade Crossings
-  Proposed Station Site
-  Existing Layover Facilities
-  MBTA Commuter Rail Station
-  Town Boundaries
-  Area of Potential Effect for Above Ground Properties
-  **NB.052** Properties Determined Eligible for Listing in the National Register of Historic Places as part of the South Coast Rail Project
-  **NB.052** Properties Previously Listed or Determined Eligible for Listing in the National Register of Historic Places, National Historic Landmarks, or Properties Listed in the State Register of Historic Places
-  **NB.052** Properties Recommended Not Eligible for National Register Listing (including properties demolished or outside the APE)



Figure 4.8-9
 New Bedford Main Line
 to Weir Junction



- Legend**
- Proposed Rail Alternative
 - Grade Crossings
 - Proposed Station Site
 - Existing Layover Facilities
 - MBTA Commuter Rail Station
 - Town Boundaries
 - Area of Potential Effect for Above Ground Properties
 - NB.052** Properties Determined Eligible for Listing in the National Register of Historic Places as part of the South Coast Rail Project
 - NB.052** Properties Previously Listed or Determined Eligible for Listing in the National Register of Historic Places, National Historic Landmarks, or Properties Listed in the State Register of Historic Places
 - NB.052** Properties Recommended Not Eligible for National Register Listing (including properties demolished or outside the APE)



Figure 4.8-10
New Bedford Main Line
to Weir Junction



3/16/2012
 \\mskys\project\10111\GIS\MapServer\FES\Bare_01\FAL\Bare_New_Bedford_vnc3.mxd

Legend

- Proposed Rail Alternative
- Grade Crossings
- Proposed Station Site
- Existing Layover Facilities
- MBTA Commuter Rail Station
- Town Boundaries
- Area of Potential Effect for Above Ground Properties
- NB.052** Properties Determined Eligible for Listing in the National Register of Historic Places as part of the South Coast Rail Project
- NB.052** Properties Previously Listed or Determined Eligible for Listing in the National Register of Historic Places, National Historic Landmarks, or Properties Listed in the State Register of Historic Places
- NB.052** Properties Recommended Not Eligible for National Register Listing (including properties demolished or outside the APE)



Figure 4.8-11
 New Bedford Main Line
 to Weir Junction



- Legend**
- Proposed Rail Alternative
 - Area of Potential Effect for Above Ground Properties
 - NB.052 → Properties Determined Eligible for Listing in the National Register of Historic Places as part of the South Coast Rail Project
 - NB.052 → Properties Previously Listed or Determined Eligible for Listing in the National Register of Historic Places, National Historic Landmarks, or Properties Listed in the State Register of Historic Places
 - NB.052 → Properties Recommended Not Eligible for National Register Listing (including properties demolished or outside the APE)
 - Grade Crossings
 - Proposed Station Site
 - Existing Layover Facilities
 - MBTA Commuter Rail Station
 - Town Boundaries



Figure 4.8-12
New Bedford Main Line
to Weir Junction



- Legend**
- Proposed Rail Alternative
 - Grade Crossings
 - Proposed Station Site
 - Existing Layover Facilities
 - MBTA Commuter Rail Station
 - Town Boundaries
 - Area of Potential Effect for Above Ground Properties
 - NB.052 Properties Determined Eligible for Listing in the National Register of Historic Places as part of the South Coast Rail Project
 - NB.052 Properties Previously Listed or Determined Eligible for Listing in the National Register of Historic Places, National Historic Landmarks, or Properties Listed in the State Register of Historic Places
 - NB.052 Properties Recommended Not Eligible for National Register Listing (including properties demolished or outside the APE)



Figure 4.8-13
New Bedford Main Line
to Weir Junction



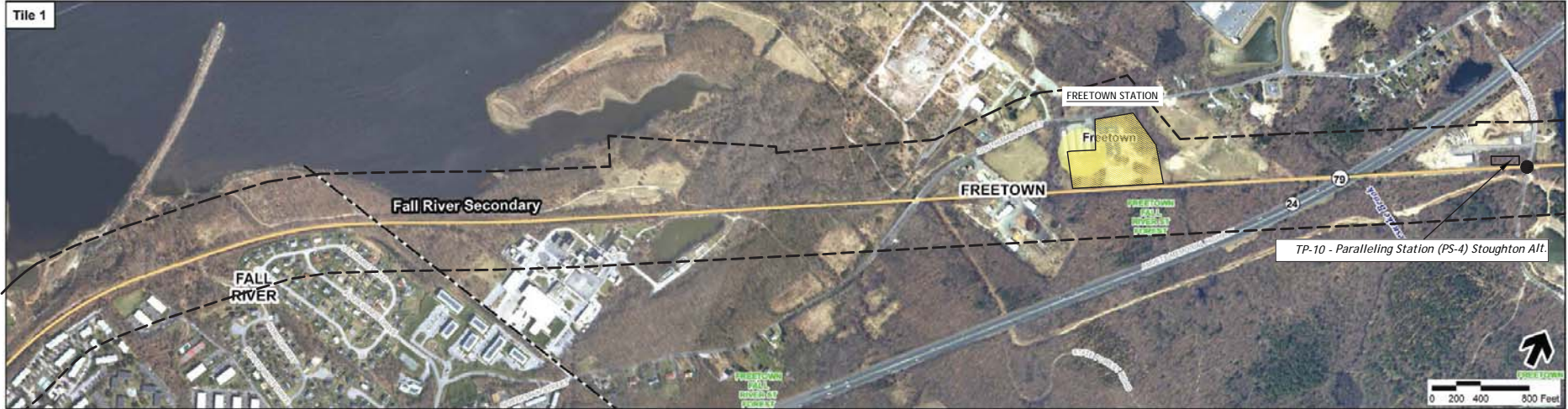
1/20/2015
 \\nas01\apps\proj\0111\0001\proj\GIS\KBR\Map_Fc\Map\Map_Fc_0111\Map_0111.mxd

Legend

- Proposed Rail Alternative
- Grade Crossings
- Proposed Station Site
- Existing Layover Facilities
- MBTA Commuter Rail Station
- Town Boundaries
- Area of Potential Effect for Above Ground Properties
- NB. 052** Properties Determined Eligible for Listing in the National Register of Historic Places as part of the South Coast Rail Project
- NB. 052** Properties Previously Listed or Determined Eligible for Listing in the National Register of Historic Places, National Historic Landmarks, or Properties Listed in the State Register of Historic Places
- NB. 052** Properties Recommended Not Eligible for National Register Listing (including properties demolished or outside the APE)



Figure 4.8-14
 Fall River Secondary to
 Myricks Junction



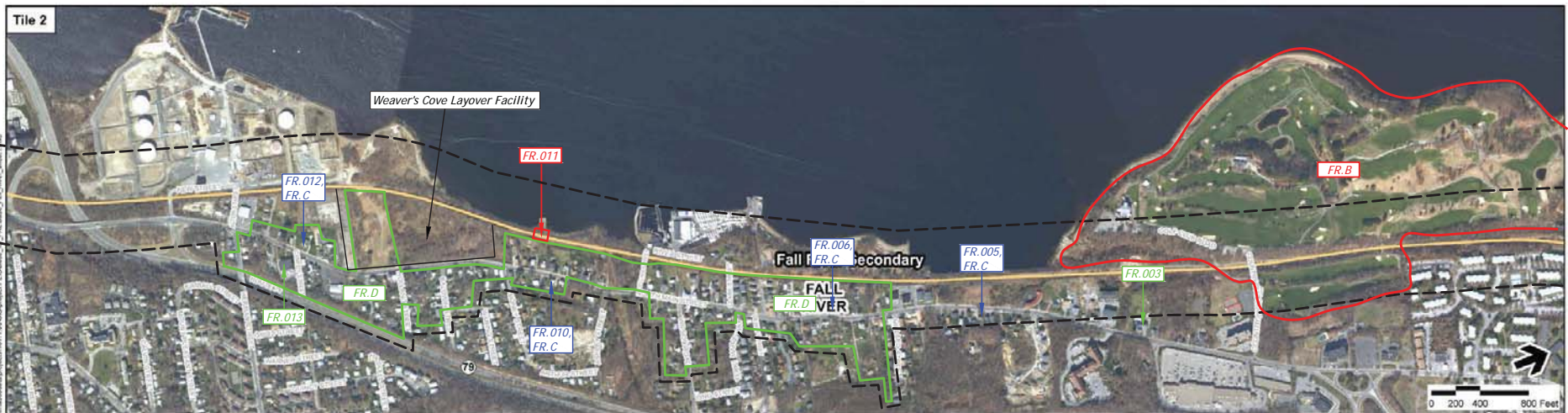
Legend

- Proposed Rail Alternative
- Grade Crossings
- Proposed Station Site
- Existing Layover Facilities
- MBTA Commuter Rail Station
- Town Boundaries
- Area of Potential Effect for Above Ground Properties
- NB.052** Properties Determined Eligible for Listing in the National Register of Historic Places as part of the South Coast Rail Project
- NB.052** Properties Previously Listed or Determined Eligible for Listing in the National Register of Historic Places, National Historic Landmarks, or Properties Listed in the State Register of Historic Places
- NB.052** Properties Recommended Not Eligible for National Register Listing (including properties demolished or outside the APE)

Index Map



Figure 4.8-15
Fall River Secondary to
Myricks Junction



- Legend**
- Proposed Rail Alternative
 - Grade Crossings
 - Proposed Station Site
 - Existing Layover Facilities
 - MBTA Commuter Rail Station
 - Town Boundaries
 - Area of Potential Effect for Above Ground Properties
 - NB.052 Properties Determined Eligible for Listing in the National Register of Historic Places as part of the South Coast Rail Project
 - NB.052 Properties Previously Listed or Determined Eligible for Listing in the National Register of Historic Places, National Historic Landmarks, or Properties Listed in the State Register of Historic Places
 - NB.052 Properties Recommended Not Eligible for National Register Listing (including properties demolished or outside the APE)



Figure 4.8-16
Fall River Secondary to
Myricks Junction

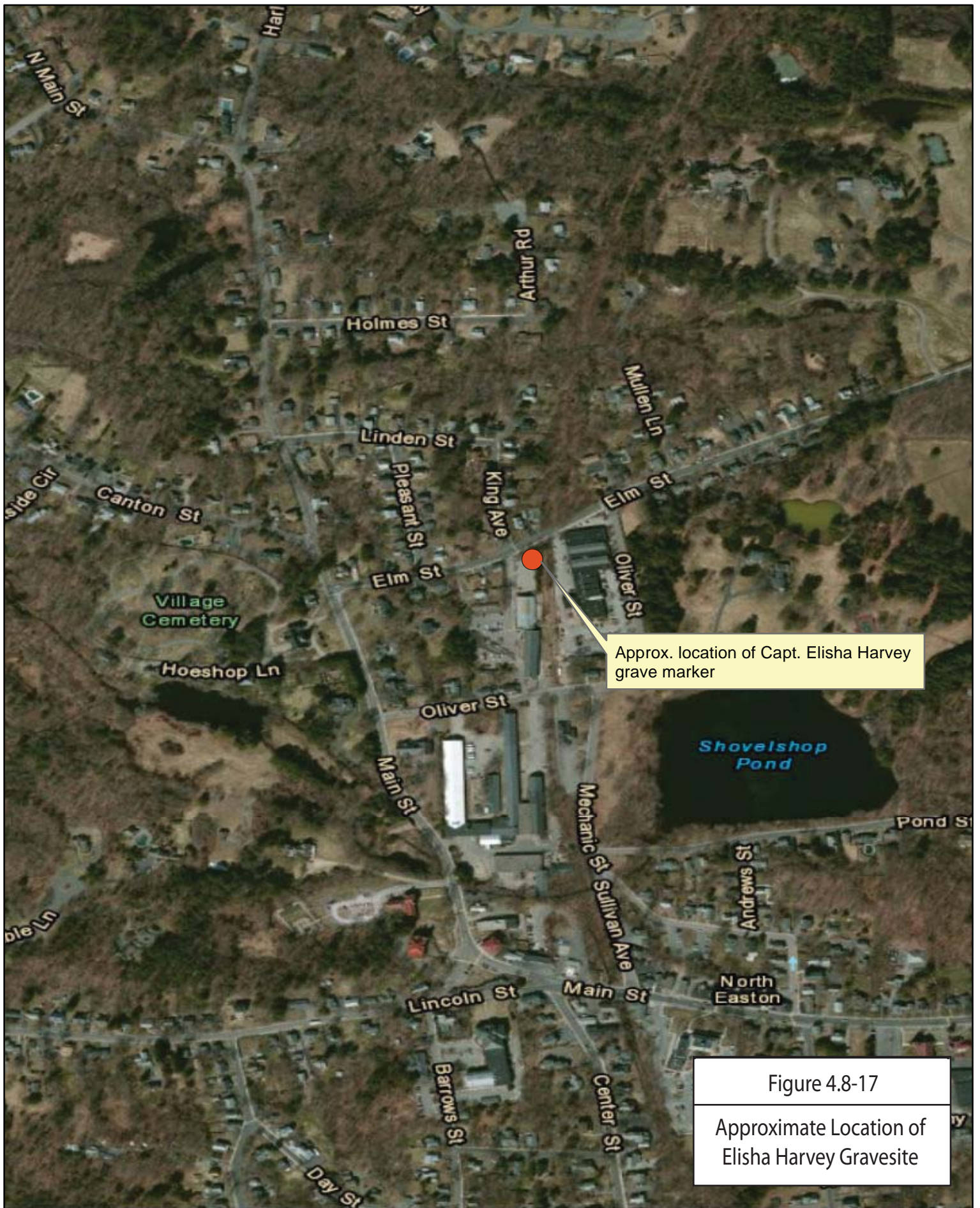


Figure 4.8-17
Approximate Location of
Elisha Harvey Gravesite