



Printing Date: 7/12/2019
 File: \\nas003\projects\10111_0002\GIS\project\Drawings\Drawings\Map\LandUse\EJC19_09\Drawings\Map_LU_NewBedford_017.mxd

- Legend**
- MBTA Commuter Rail Station
 - MBTA Commuter Rail
 - Town Boundaries
 - Proposed Alternative Alignment
 - ▭ Limit of Work for Proposed Station/Layover Facility
 - ▭ Limit of Permanent Impact for Proposed Rail
 - ▭ Limit of Work for Proposed Traction Power Facility*
 - ▭ Land Acquisition within Environmental Justice Community
 - ▭ Parcel ID

- Environmental Justice Populations**
- | | |
|--|---|
| <ul style="list-style-type: none"> F FI FIE FIM FIME FM FME | <ul style="list-style-type: none"> I IE IM IME M ME |
|--|---|
- F - Meets foreign born criteria
 I - Meets income criteria
 M - Meets minority criteria
 E - Meets english language fluency criteria

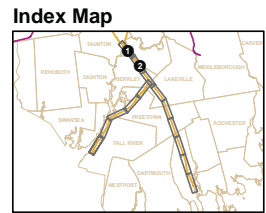
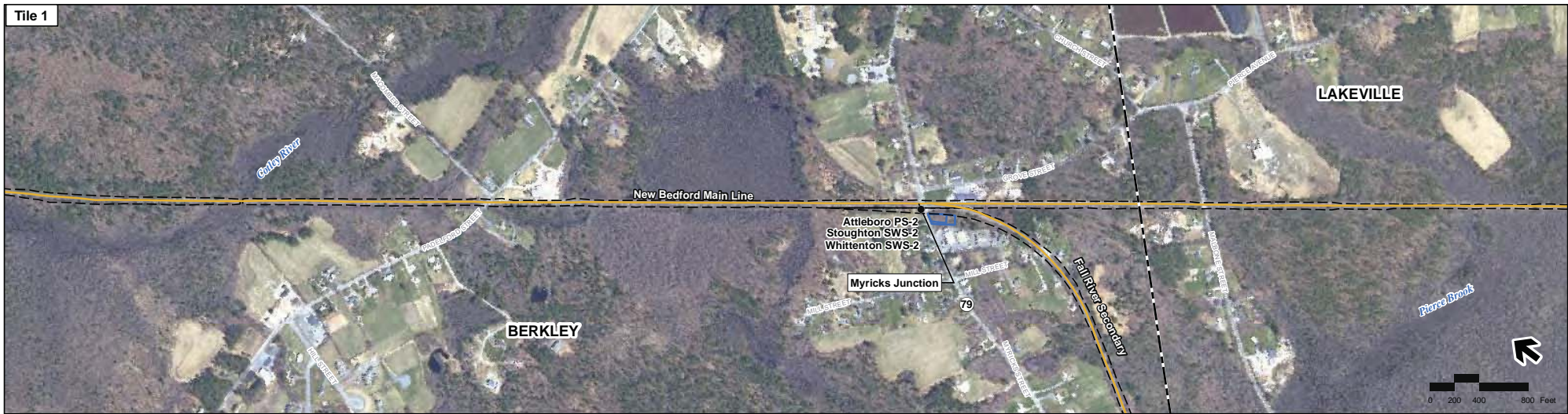


Figure 4.4-1a
 All Rail Alternatives -
 New Bedford Main Line
 Environmental Justice Neighborhoods

*Traction power stations are only required for electric rail alternatives



Pricing Date: 7/12/2009
 File: \\mba03projects\10111\2009\project\pricing\New Bedford\Rail_LandrailEIS\GIS\MapServer\10111_Lakeville_Env_Just.ppt.mxd

- Legend**
- MBTA Commuter Rail Station
 - MBTA Commuter Rail
 - - - Town Boundaries
 - Proposed Alternative Alignment
 - Limit of Work for Proposed Station/Layover Facility
 - Limit of Permanent Impact for Proposed Rail
 - Limit of Work for Proposed Traction Power Facility*
 - ⊗ Land Acquisition within Environmental Justice Community
 - ⊗ Parcel ID

Environmental Justice Populations

F	I
FI	IE
FIE	IM
FIM	IME
FIME	M
FM	ME
FME	

F - Meets foreign born criteria
 I - Meets income criteria
 M - Meets minority criteria
 E - Meets english language fluency criteria

Index Map



* Traction power stations are only required for electric rail alternatives

Figure 4.4-1b

All Rail Alternatives -
New Bedford Main Line

Environmental Justice Neighborhoods



Printing Date: 7/7/2009
 File: \unl\projects\0111_2009\GIS\project\map\fig4-1c\fig4-1c_0111_2009\fig4-1c_0111_2009.mxd

- Legend**
- MBTA Commuter Rail Station
 - MBTA Commuter Rail
 - Town Boundaries
 - Proposed Alternative Alignment
 - ▭ Limit of Work for Proposed Station/Layover Facility
 - ▭ Limit of Permanent Impact for Proposed Rail
 - ▭ Limit of Work for Proposed Traction Power Facility*
 - ▭ Land Acquisition within Environmental Justice Community
 - ▭ Parcel ID

Environmental Justice Populations

- | | |
|--|---|
| <ul style="list-style-type: none"> F FI FIE FIM FIME FM FME | <ul style="list-style-type: none"> I IE IM IME M ME |
|--|---|
- F - Meets foreign born criteria*
I - Meets income criteria
M - Meets minority criteria
E - Meets english language fluency criteria

Index Map

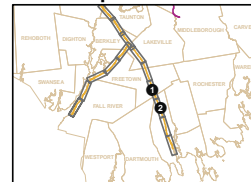
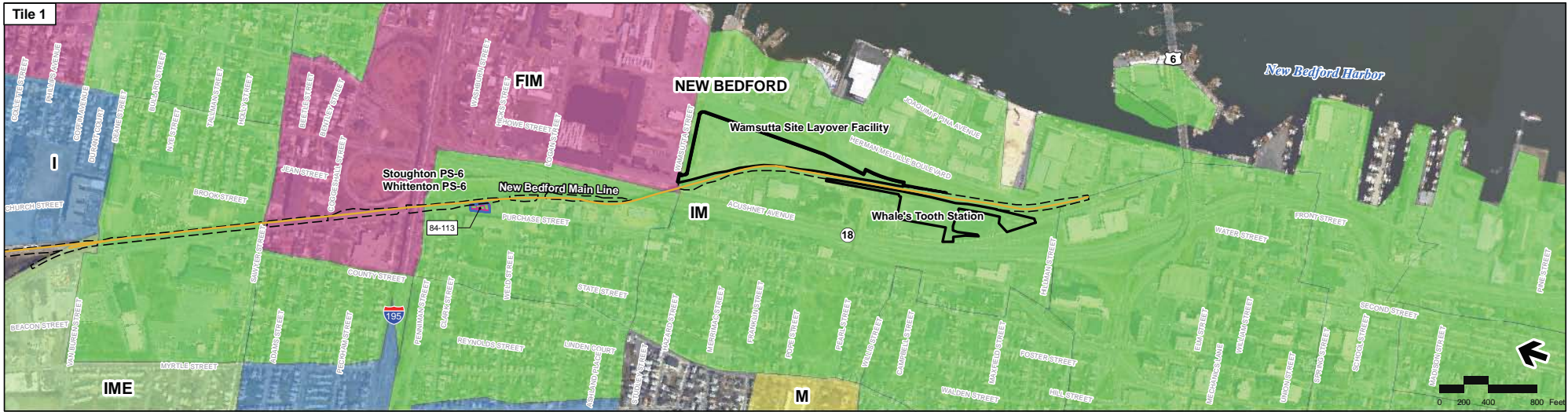


Figure 4.4-1c
 All Rail Alternatives -
 New Bedford Main Line
 Environmental Justice Neighborhoods

*Traction power stations are only required for electric rail alternatives



Printing Date: 7/1/2019
 File: \\mbta\gis\project\phase2\tech\reports\landuse\ECR\allOptions\AIRAIL_LU_NewBedford_1pg.mxd

Legend

- MBTA Commuter Rail Station
- MBTA Commuter Rail
- Town Boundaries
- Proposed Alternative Alignment
- ▭ Limit of Work for Proposed Station/Layover Facility
- ▭ Limit of Permanent Impact for Proposed Rail
- ▭ Limit of Work for Proposed Traction Power Facility*
- ▭ Land Acquisition within Environmental Justice Community
- ▭ Parcel ID

Environmental Justice Populations

- | | |
|--|---|
| <ul style="list-style-type: none"> F FI FIE FIM FIME FM FME | <ul style="list-style-type: none"> I IE IM IME M ME |
|--|---|
- F - Meets foreign born criteria*
I - Meets income criteria
M - Meets minority criteria
E - Meets english language fluency criteria

*Traction power stations are only required for electric rail alternatives

Index Map



Figure 4.4-1e
 All Rail Alternatives -
 New Bedford Main Line
 Environmental Justice Neighborhoods



Printing Date: 7/1/2009
 File: \\umbro\project\0111_2009\project\phase2\fig4.4-2a\env\fig4.4-2a\env\fig4.4-2a.mxd

- Legend**
- MBTA Commuter Rail Station
 - MBTA Commuter Rail
 - Town Boundaries
 - Proposed Alternative Alignment
 - ▭ Limit of Work for Proposed Station/Layover Facility
 - ▭ Limit of Permanent Impact for Proposed Rail
 - ▭ Limit of Work for Proposed Traction Power Facility*
 - ▭ Land Acquisition within Environmental Justice Community
 - ▭ Parcel ID

Environmental Justice Populations

- | | |
|--|---|
| F | I |
| FI | IE |
| FIE | IM |
| FIM | IME |
| FIME | M |
| FM | ME |
| FME | |

F - Meets foreign born criteria
 I - Meets income criteria
 M - Meets minority criteria
 E - Meets english language fluency criteria

Index Map

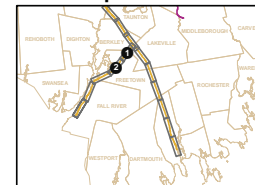


Figure 4.4-2a

All Rail Alternatives -
Fall River Secondary

Environmental Justice Neighborhoods

*Traction power stations are only required for electric rail alternatives



- Legend**
- MBTA Commuter Rail Station
 - MBTA Commuter Rail
 - - - Town Boundaries
 - Proposed Alternative Alignment
 - ▭ Limit of Work for Proposed Station/Layover Facility
 - ▭ Limit of Permanent Impact for Proposed Rail
 - ▭ Limit of Work for Proposed Traction Power Facility*
 - ▭ Land Acquisition within Environmental Justice Community
 - ▭ Parcel ID

Environmental Justice Populations

F	I
FI	IE
FIE	IME
FIM	IME
FIME	M
FM	ME
FME	

F - Meets foreign born criteria
 I - Meets income criteria
 M - Meets minority criteria
 E - Meets english language fluency criteria

* Traction power stations are only required for electric rail alternatives

Index Map

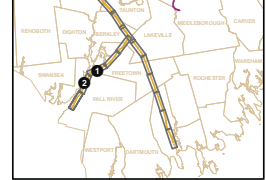


Figure 4.4-2b
 All Rail Alternatives -
 Fall River Secondary
 Environmental Justice Neighborhoods



Printing Date: 4/22/2009
 File: \\mbtpro\geoserver\proj\proj\ecra\Options\Rail_EJ_FallRvr_Pages1.mxd

Legend

- MBTA Commuter Rail Station
- MBTA Commuter Rail
- Town Boundaries
- Proposed Alternative Alignment
- ▭ Limit of Work for Proposed Station/Layover Facility
- ▭ Limit of Permanent Impact for Proposed Rail
- ▭ Limit of Work for Proposed Traction Power Facility*
- ▭ Land Acquisition within Environmental Justice Community
- ▭ Parcel ID

Environmental Justice Populations

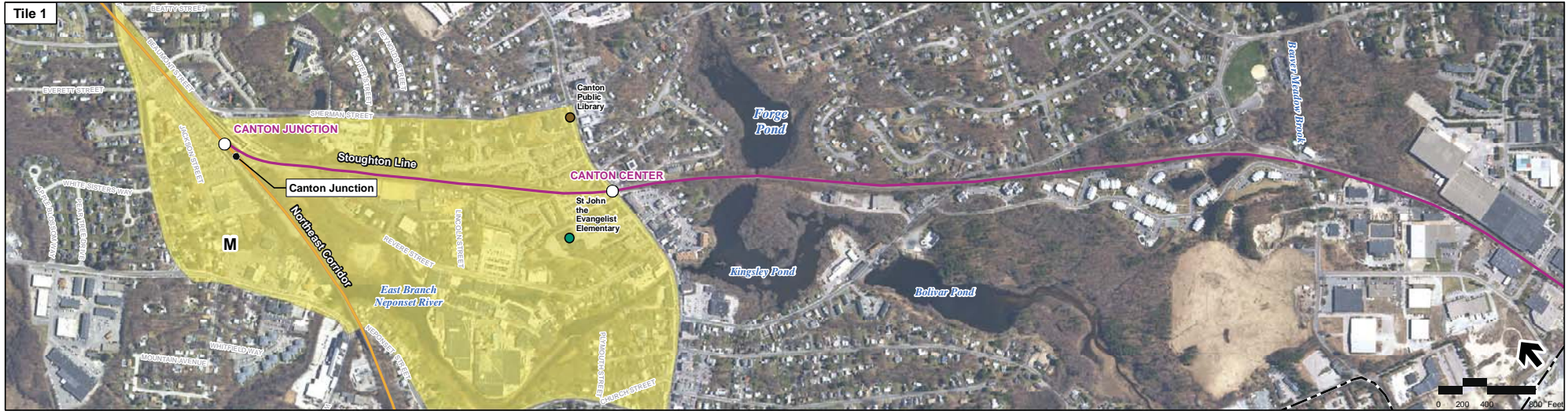
- | | |
|--|---|
| <ul style="list-style-type: none"> F FI FIE FIM FIME FM FME | <ul style="list-style-type: none"> I IE IM IME M ME |
|--|---|
- F - Meets foreign born criteria
 I - Meets income criteria
 M - Meets minority criteria
 E - Meets english language fluency criteria

*Traction power stations are only required for electric rail alternatives

Index Map



Figure 4.4-2c
 All Rail Alternatives -
 Fall River Secondary
 Environmental Justice Neighborhoods



Printing Date: 2/7/2013
 File: \\mbta\proj\proj\GIS\Projects\FIS\Comp_Burgent\LALE_Stoughton_Page1.mxd

- Legend**
- Commuter Rail Station
 - MBTA Commuter Rail
 - Town Boundaries
 - Place of Worship
 - Schools
 - Colleges
 - Libraries
 - Hospitals
 - Community Health Centers
 - Proposed Stations
 - Proposed Alternative

- Environmental Justice Populations**
- | | | |
|------|-----|---|
| F | I | F - Meets foreign born criteria |
| FI | IE | I - Meets income criteria |
| FIE | IM | M - Meets minority criteria |
| FIM | IME | E - Meets english language fluency criteria |
| FIME | M | |
| FM | ME | |
| FME | | |

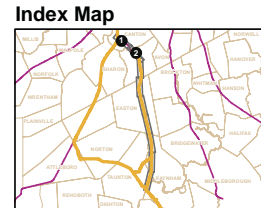
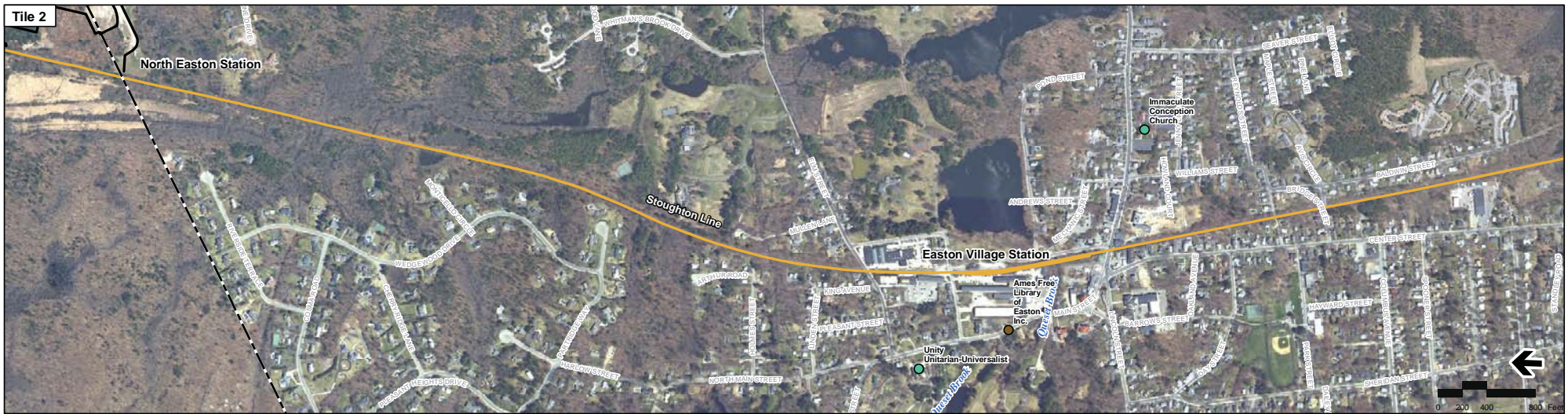


Figure 4.4-3a
 Environmental Justice Populations within
 0.5 Mile of Stoughton Alternative



Printing Date: 2/7/2015
 File: \\unc\proj\10111_00\GIS\proj\FEIS\Comp_Benefit\EA_Stoughton_Proj\2.mxd

- Legend**
- Commuter Rail Station
 - MBTA Commuter Rail
 - Town Boundaries
 - Place of Worship
 - Schools
 - Colleges
 - Libraries
 - Hospitals
 - Community Health Centers
 - Proposed Stations
 - Proposed Alternative

- Environmental Justice Populations**
- F - Meets foreign born criteria
 - I - Meets income criteria
 - M - Meets minority criteria
 - E - Meets english language fluency criteria
 - FI
 - FIE
 - FIM
 - FIME
 - FM
 - FME
 - I
 - IE
 - IM
 - IME
 - M
 - ME

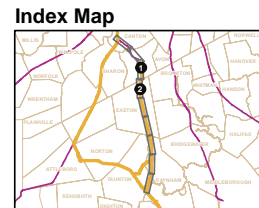
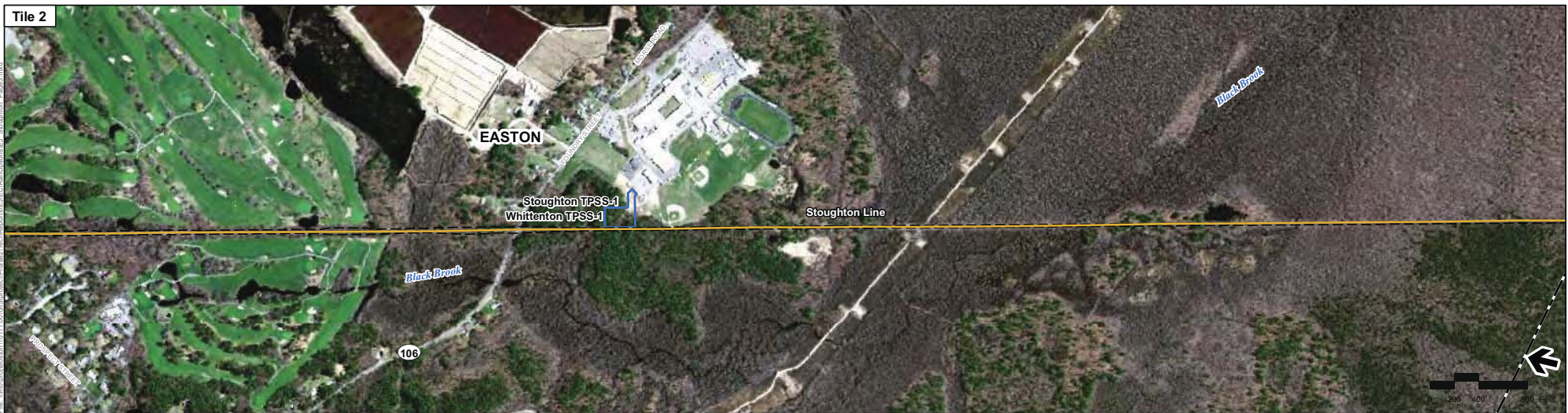


Figure 4.4-3b
 Environmental Justice Populations within
 0.5 Mile of Stoughton Alternative



Printing Date: 7/1/2019
 File: \\hills\gis\apps\gis\mxd\2019\Stoughton\Map_Series\Stoughton_Map_Series.mxd

- Legend**
- MBTA Commuter Rail Station
 - MBTA Commuter Rail
 - Town Boundaries
 - Proposed Alternative Alignment
 - ▭ Limit of Work for Proposed Station/Layover Facility
 - ▭ Limit of Permanent Impact for Proposed Rail
 - ▭ Limit of Work for Proposed Traction Power Facility*
 - ▭ Land Acquisition within Environmental Justice Community
 - ▭ Parcel ID

Environmental Justice Populations

- | | |
|--|---|
| <ul style="list-style-type: none"> F FI FIE FIM FIME FM FME | <ul style="list-style-type: none"> I IE IM IME M ME |
|--|---|
- F - Meets foreign born criteria
 I - Meets income criteria
 M - Meets minority criteria
 E - Meets english language fluency criteria

Index Map

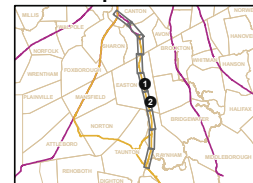
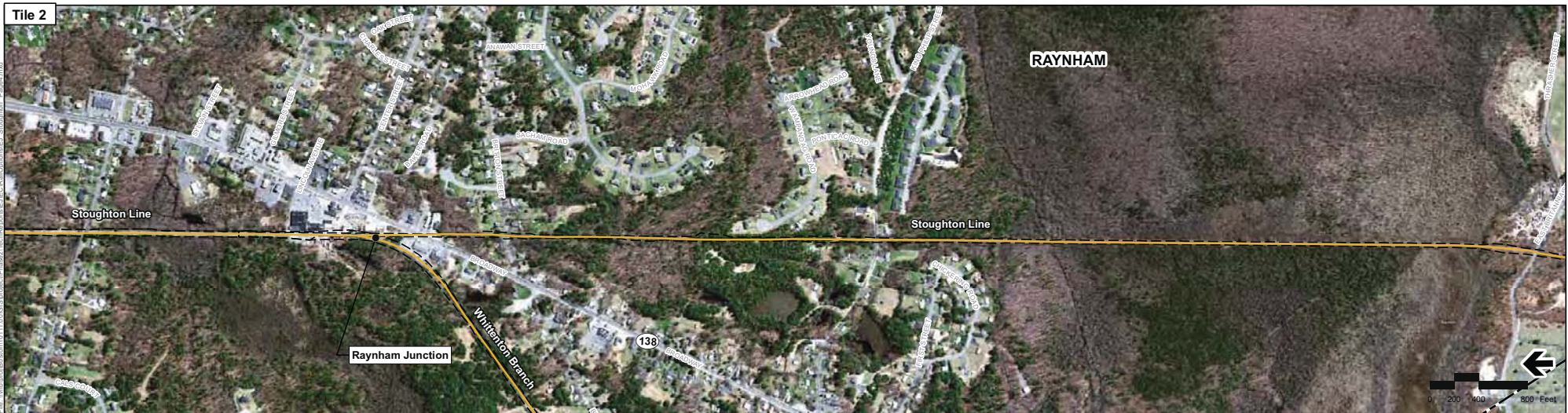


Figure 4.4-3c
 Stoughton Alternatives -
 Stoughton Line
 Environmental Justice Neighborhoods

*Traction power stations are only required for electric rail alternatives



- Legend**
- MBTA Commuter Rail Station
 - MBTA Commuter Rail
 - - - Town Boundaries
 - Proposed Alternative Alignment
 - Limit of Work for Proposed Station/Layover Facility
 - Limit of Permanent Impact for Proposed Rail
 - Limit of Work for Proposed Traction Power Facility*
 - Land Acquisition within Environmental Justice Community
 - Parcel ID

- Environmental Justice Populations**
- | | |
|------|-----|
| F | I |
| FI | IE |
| FIE | IM |
| FIM | IME |
| FIME | M |
| FM | ME |
| FME | |

F - Meets foreign born criteria
 I - Meets income criteria
 M - Meets minority criteria
 E - Meets english language fluency criteria

Index Map

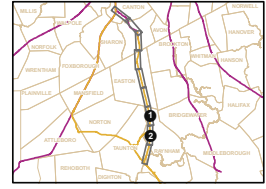


Figure 4.4-3d
 Stoughton Alternatives -
 Stoughton Line
 Environmental Justice Neighborhoods

*Traction power stations are only required for electric rail alternatives



Printing Date: 7/1/2019
 File: \\mba\proj\66808\101111_001\GIS\project\ha\2\Tech\Report\EA\EC\Rail\Options\EJ_Stoughton_Page5.mxd

Legend

- MBTA Commuter Rail Station
- MBTA Commuter Rail
- - - Town Boundaries
- Proposed Alternative Alignment
- ▭ Limit of Work for Proposed Station/Layover Facility
- ▭ Limit of Permanent Impact for Proposed Rail
- ▭ Limit of Work for Proposed Traction Power Facility*
- ▭ Land Acquisition within Environmental Justice Community
- ▭ Parcel ID

Environmental Justice Populations

- | | |
|--|---|
| <ul style="list-style-type: none"> F FI FIE FIM FIME FM FME | <ul style="list-style-type: none"> I IE IM IME M ME |
|--|---|
- F - Meets foreign born criteria
 I - Meets income criteria
 M - Meets minority criteria
 E - Meets english language fluency criteria

* Traction power stations are only required for electric rail alternatives

Index Map

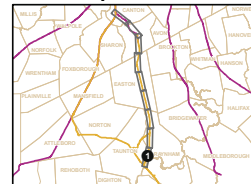


Figure 4.4-3e
 Stoughton Alternatives -
 Stoughton Line
 Environmental Justice Neighborhoods



Printing Date: 2/7/2011
 File: \\hwy\proj\proj\10111_00\GIS\project\ES\Corp\Bayer\EL\A_Straighton_Whittenton_Page2.mxd

- Legend**
- Commuter Rail Station
 - MBTA Commuter Rail
 - Town Boundaries
 - Place of Worship
 - Schools
 - Colleges
 - Libraries
 - Hospitals
 - Community Health Centers
 - ▭ Proposed Stations
 - Proposed Alternative

- Environmental Justice Populations**
- | | | |
|------|-----|---|
| F | I | F - Meets foreign born criteria |
| FI | IE | I - Meets income criteria |
| FIE | IM | M - Meets minority criteria |
| FIM | IME | E - Meets english language fluency criteria |
| FIME | M | |
| FM | ME | |
| FME | | |

Index Map

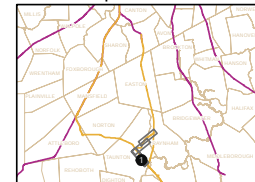


Figure 4.4-4
Environmental Justice Populations within
0.5 mile of Whittenton Alternative, along
Attleboro Secondary



Printing Date: 12/31/2008
 File: \\nhb\proj\Boston\10111.00\GIS\project\Phase2\Tech\Reports\EJ\stations_Template.mxd

Legend

Proposed Alternative

1/2 Mile Radius of Proposed Station Site

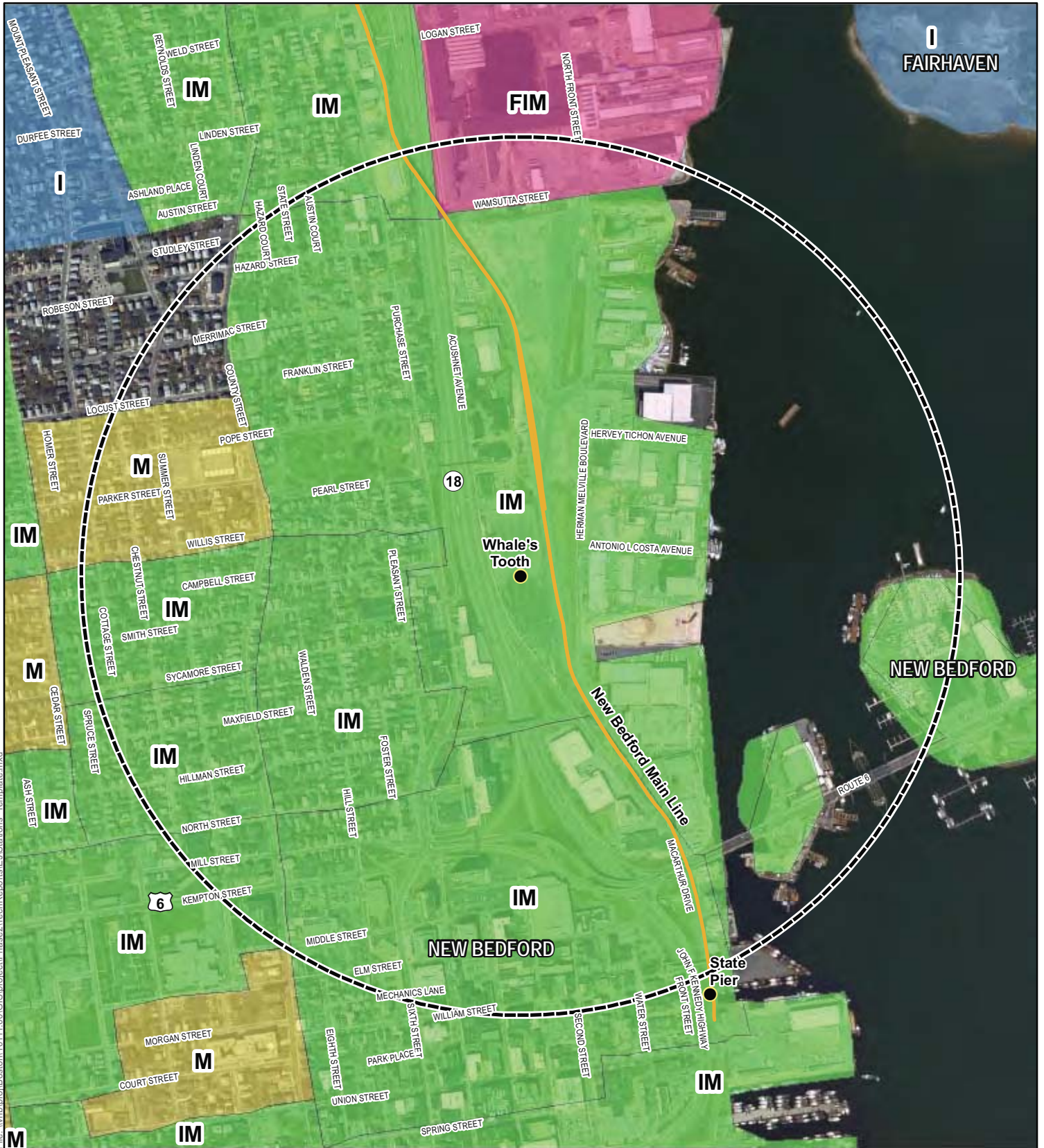
Environmental Justice Populations

- | | |
|------|-----|
| F | FME |
| FI | I |
| FIE | IE |
| FIM | IM |
| FIME | IME |
| FM | M |
| | ME |

F - Meets foreign born criteria
I - Meets income criteria
M - Meets minority criteria
E - Meets english language fluency criteria



Figure 4.4-5
 Environmental Justice
 Populations within 0.5 mile of
 King's Highway Station



Printing Date: 12/31/2008
 File: \\bblpro1\Boston\10111.00\GIS\project\Phase2\Tech\Reports\EJ\S\stations_Template.mxd

Legend

Proposed Alternative

1/2 Mile Radius of Proposed Station Site

Environmental Justice Populations

- | | |
|------|-----|
| F | FME |
| FI | I |
| FIE | IE |
| FIM | IM |
| FIME | IME |
| FM | M |
| | ME |

F - Meets foreign born criteria
I - Meets income criteria
M - Meets minority criteria
E - Meets english language fluency criteria



Figure 4.4-6
 Environmental Justice
 Populations within 0.5 mile of
 Whale's Tooth Station



Printing Date: 12/31/2008
 File: \\nrbjprolboston\10\11_00\GIS\protect\Phase 2\TechReports\EJ\Stations_Template.mxd

Legend

— Proposed Alternative

○ 1/2 Mile Radius of Proposed Station Site

Environmental Justice Populations

 F	 FME
 FI	 I
 FIE	 IE
 FIM	 IM
 FIME	 IME
 FM	 M
	 ME

F - Meets foreign born criteria
I - Meets income criteria
M - Meets minority criteria
E - Meets english language fluency criteria

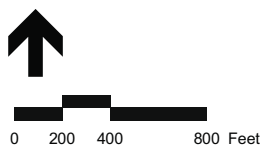
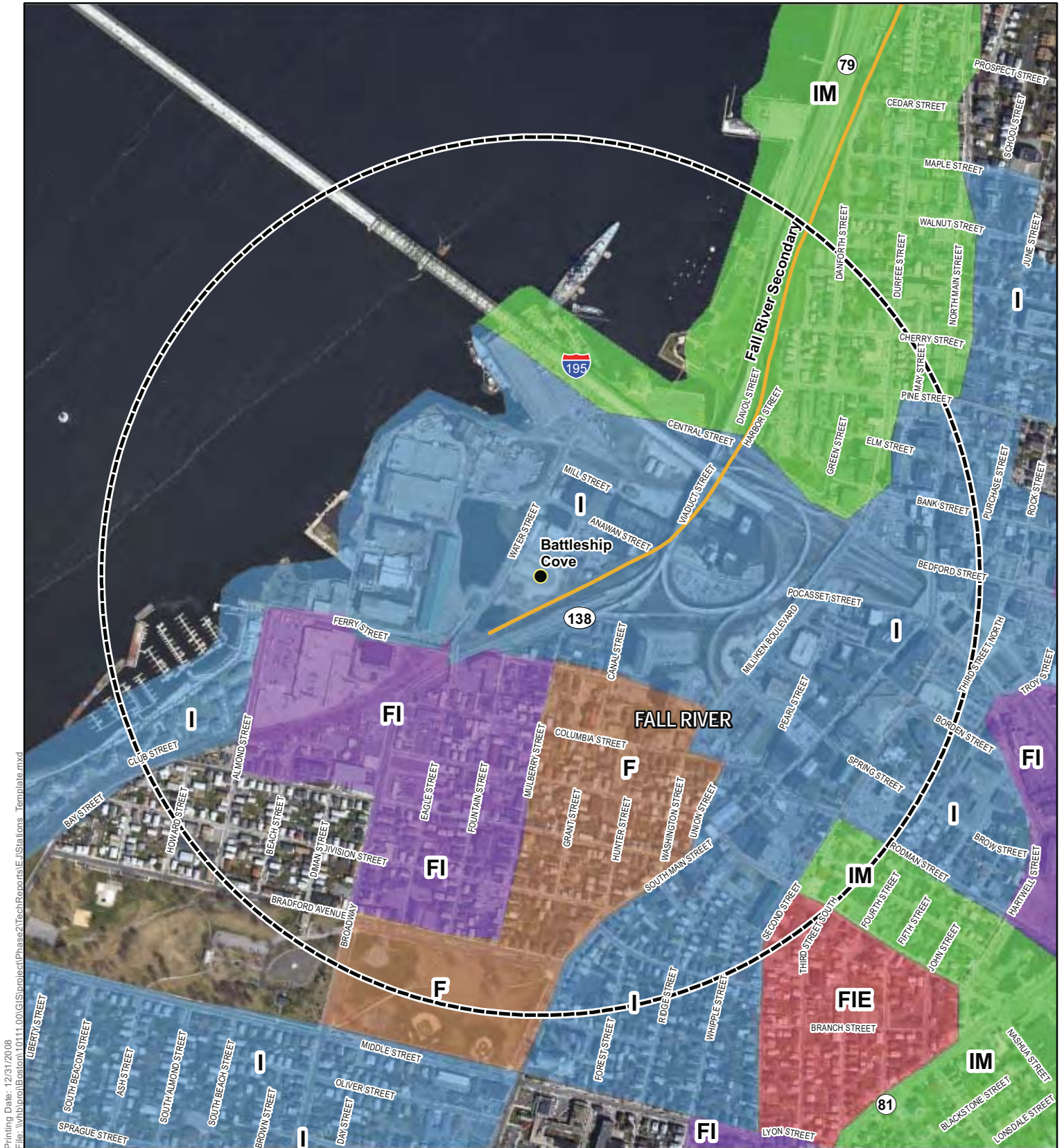


Figure 4.4-7
 Environmental Justice Populations within
 0.5 mile of Fall River Depot Station



Printing Date: 12/31/2008
 File: \\bbs\proj\Boston\10111.00\GIS\project\Phase2\Tech\Reports\EJ\stations_Template.mxd

Legend

Proposed Alternative

1/2 Mile Radius of Proposed Station Site

Environmental Justice Populations

- | | |
|------|-----|
| F | FME |
| FI | I |
| FIE | IE |
| FIM | IM |
| FIME | IME |
| FM | M |
| | ME |

F - Meets foreign born criteria
I - Meets income criteria
M - Meets minority criteria
E - Meets english language fluency criteria

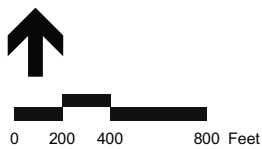
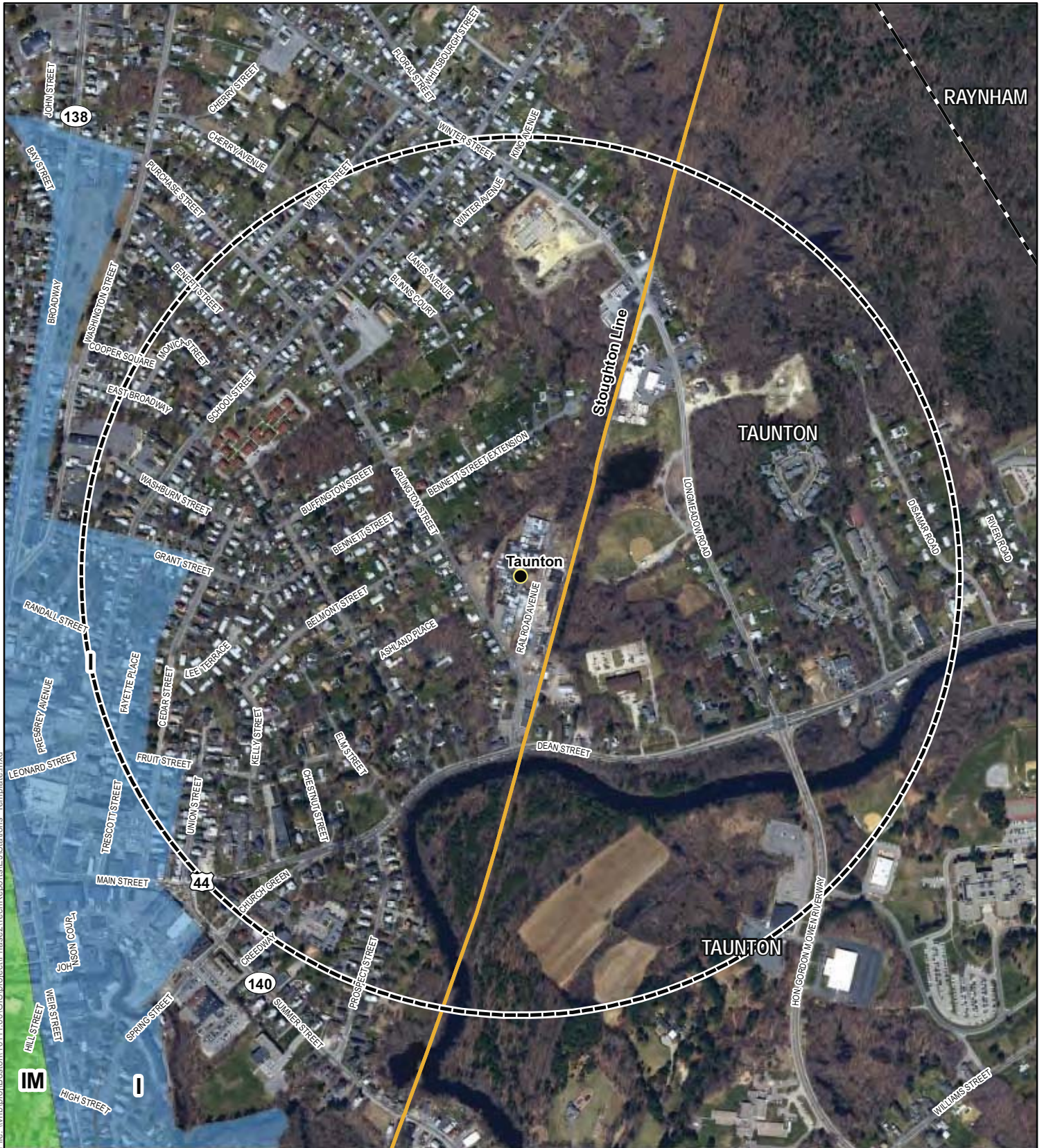


Figure 4.4-8
 Environmental Justice Populations within
 0.5 mile of Battleship Cove Station



Printing Date: 12/31/2008
 File: \\nhb\proj\Boston\10111.00\GIS\project\Phase2\Tech\Reports\EJ\stations_Template.mxd

Legend

— Proposed Alternative

⊖ 1/2 Mile Radius of Proposed Station Site

Environmental Justice Populations

- | | |
|--|---|
| F | FME |
| FI | I |
| FIE | IE |
| FIM | IM |
| FIME | IME |
| FM | M |
| ME | |

F - Meets foreign born criteria
I - Meets income criteria
M - Meets minority criteria
E - Meets english language fluency criteria



Figure 4.4-9
 Environmental Justice Populations within
 0.5 mile of Taunton Station

TAUNTON

Attleboro Secondary

Dana Street

IM

M

IM

I














Printing Date: 2/6/2013
File: \\mabos\projects\110111_00\GIS\project\EIS\Corps_Berger\Dana_Station_EJ_Half_Mile.mxd

Legend

Proposed Alternative

1/2 Mile Radius of Proposed Station Site

Environmental Justice Populations

- | | | |
|--|---|---|
|  F |  FME | F - Meets foreign born criteria |
|  FI |  I | I - Meets income criteria |
|  FIE |  IE | M - Meets minority criteria |
|  FIM |  IM | E - Meets english language fluency criteria |
|  FIME |  IME | |
|  FM |  M | |
|  ME | | |



0 200 400 800 Feet

Figure 4.4-10

Environmental Justice Populations within 0.5 mile of Dana Street Station



Printing Date: 12/31/2008
 File: \\nvr\proj\Boston\10.111.00\GIS\protect\Phase 2\Tech\Reports\EJ\Stations_Template.mxd

Legend

— Proposed Alternative

⊖ 1/2 Mile Radius of Proposed Layover

Environmental Justice Populations

- | | |
|--|---|
| F | FME |
| FI | I |
| FIE | IE |
| FIM | IM |
| FIME | IME |
| FM | M |
| | ME |

F - Meets foreign born criteria
I - Meets income criteria
M - Meets minority criteria
E - Meets english language fluency criteria

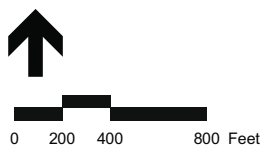
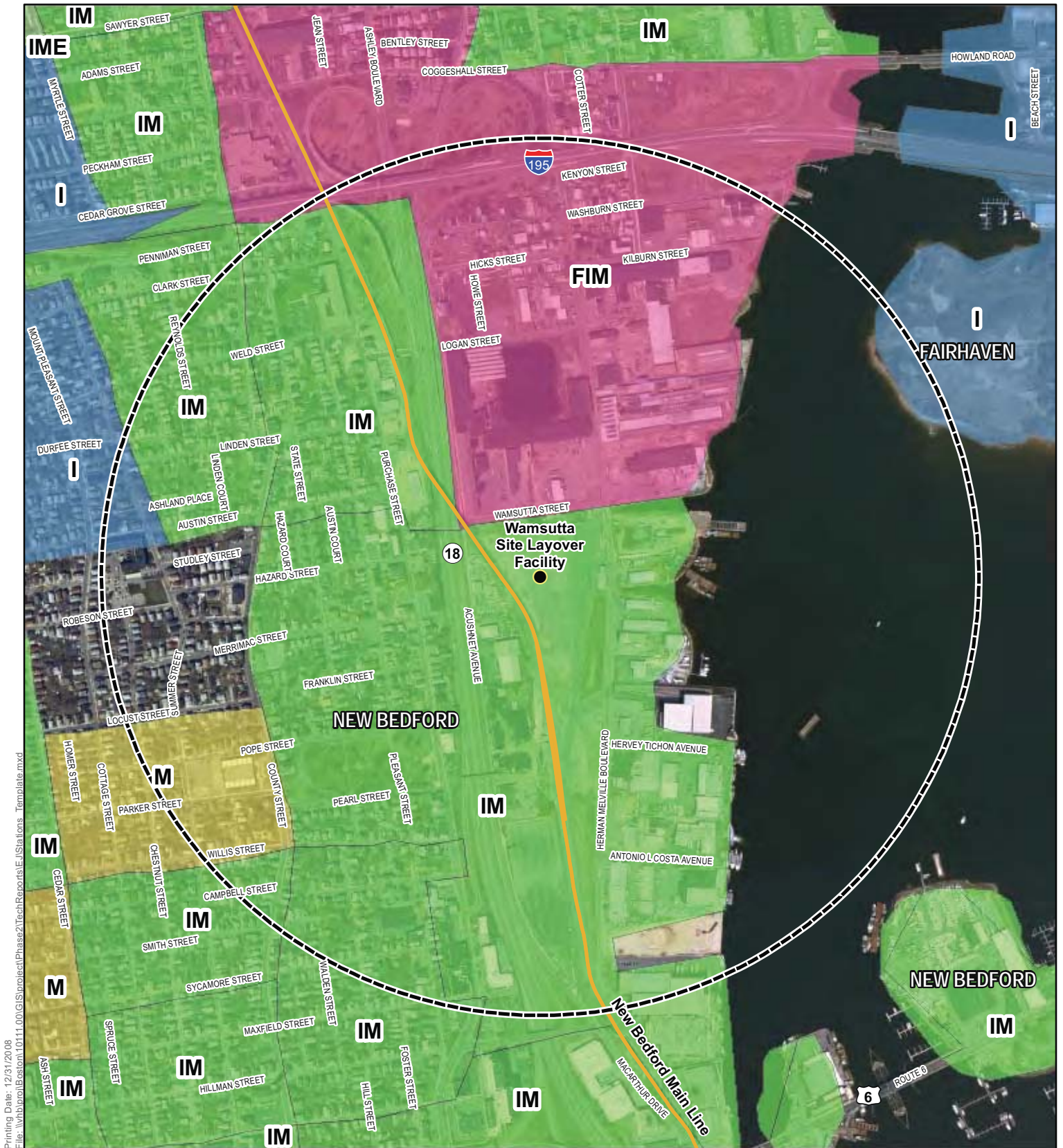


Figure 4.4-11
 Environmental Justice Populations within
 0.5 mile of Weaver's Cove Sites
 Layover Facilities



Printing Date: 12/31/2008
 File: \\nhb\proj\Boston\10111.00\GIS\project\Phase2\Tech\Reports\EJ\Status\Map\template.mxd

Legend

Proposed Alternative

1/2 Mile Radius of Proposed Layover

Environmental Justice Populations

F	FME	<i>F - Meets foreign born criteria</i>
FI	I	<i>I - Meets income criteria</i>
FIE	IE	<i>M - Meets minority criteria</i>
FIM	IM	<i>E - Meets english language fluency criteria</i>
FIME	IME	
FM	M	
ME		

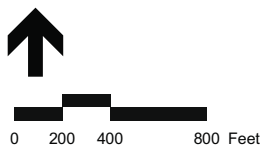


Figure 4.4-12
 Environmental Justice Populations within
 0.5 mile of Wamsutta Site
 Layover Facility



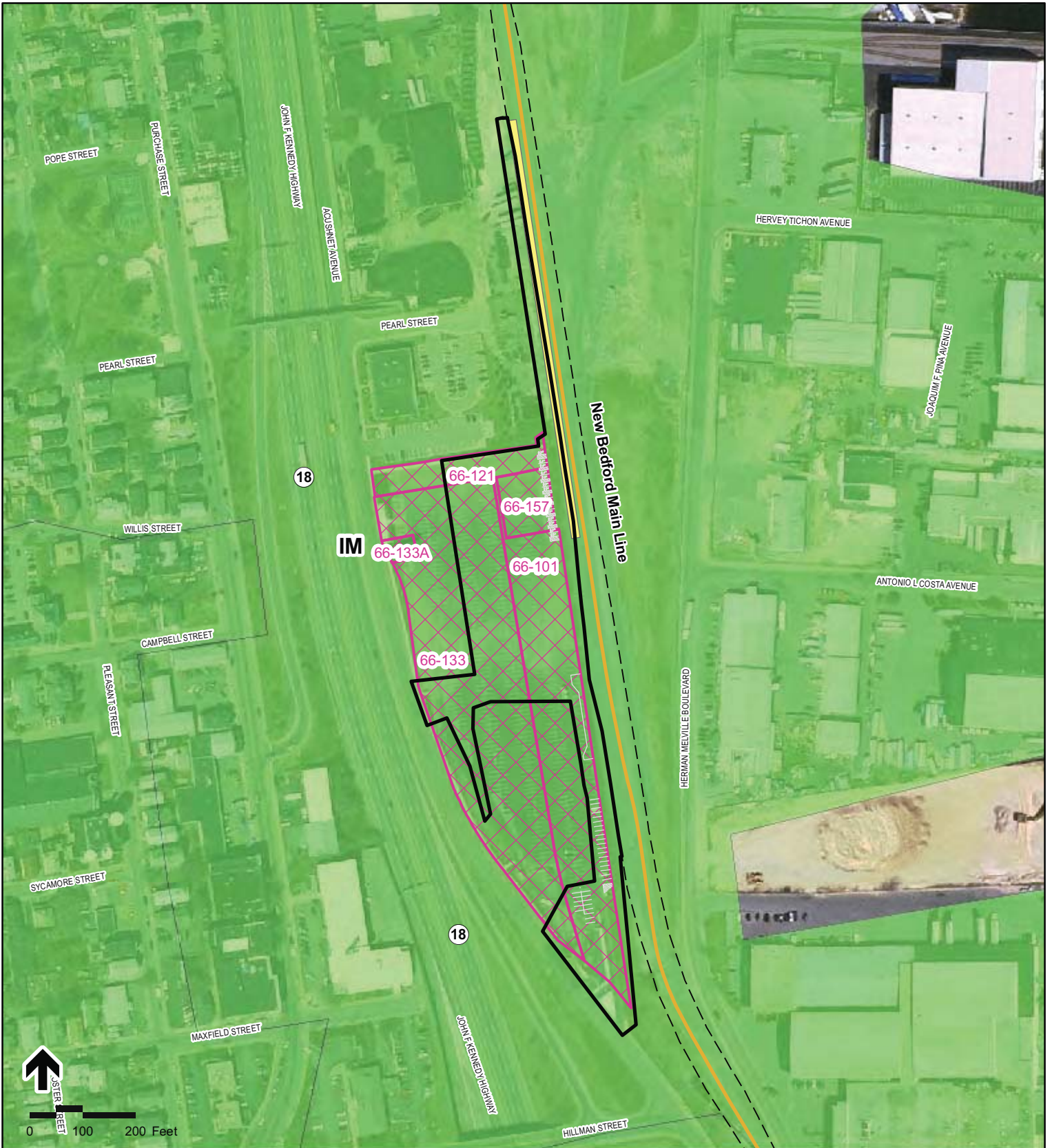
- Legend**
- Proposed Alternative Alignment
 - Commuter Rail
 - Limit of Work for Proposed Station
 - Limit of Permanent Impact for Proposed Rail
 - Parking Area
 - Platform
 - Land Acquisition
 - XX-XXX Parcel ID

Environmental Justice Populations

- | | |
|---|--|
| F | I |
| FI | IE |
| FIE | IM |
| FIM | IME |
| FIME | M |
| FM | ME |
| FME | |

F - Meets foreign born criteria
 I - Meets income criteria
 M - Meets minority criteria
 E - Meets english language fluency criteria

Figure 4.4-13
 Stoughton Station Environmental Justice Neighborhoods



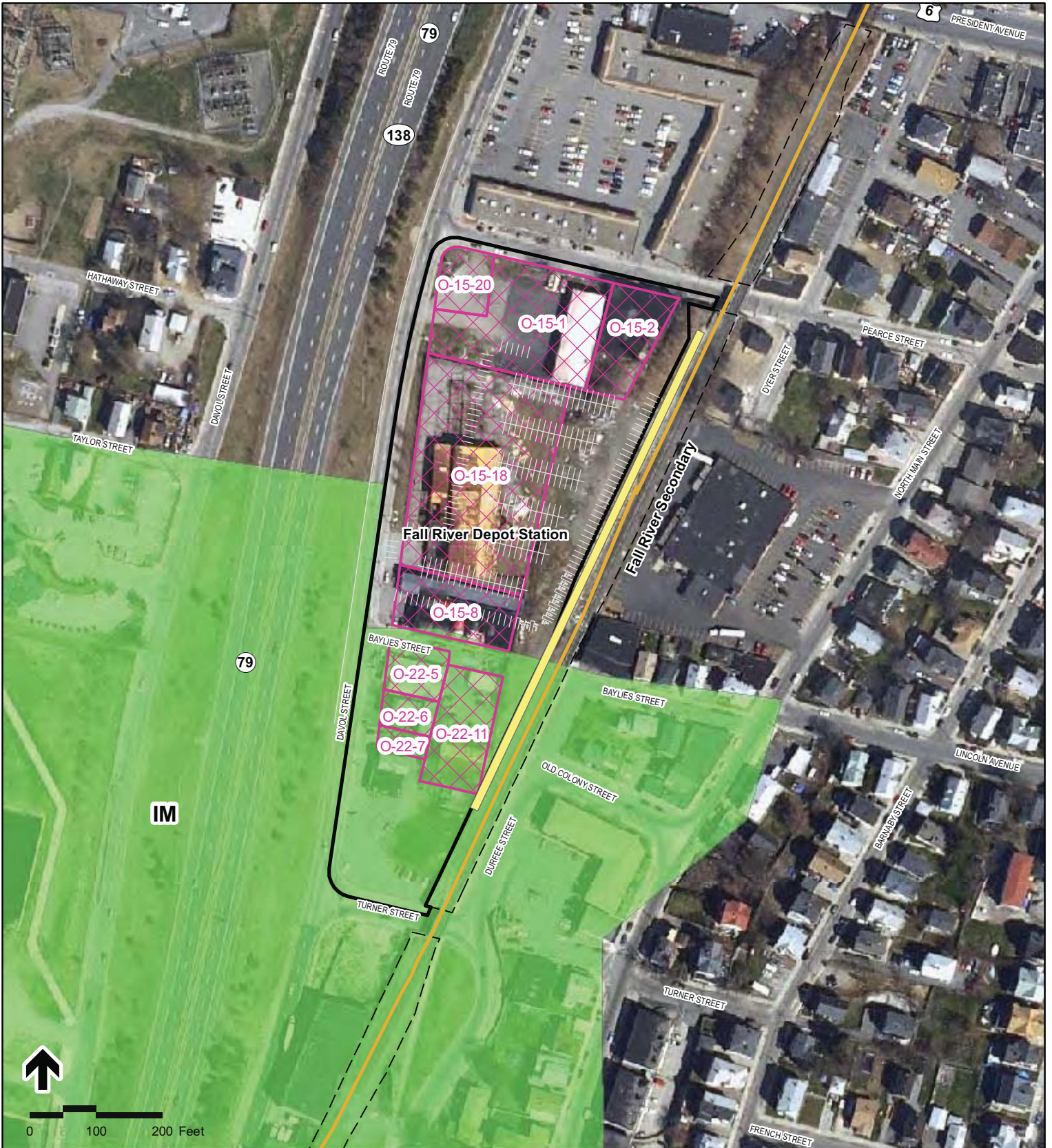
- Legend**
- Proposed Alternative Alignment
 - Limit of Work for Proposed Station
 - Limit of Permanent Impact for Proposed Rail
 - Parking Area
 - Platform
 - Land Acquisition
 - XX-XXX Parcel ID

Environmental Justice Populations

 F	 I
 FI	 IE
 FIE	 IM
 FIM	 IME
 FIME	 M
 FM	 ME
 FME	

*F - Meets foreign born criteria
 I - Meets income criteria
 M - Meets minority criteria
 E - Meets english language fluency criteria*

Figure 4.4-14
 Whale's Tooth Station -
 Environmental Justice Neighborhoods



Legend

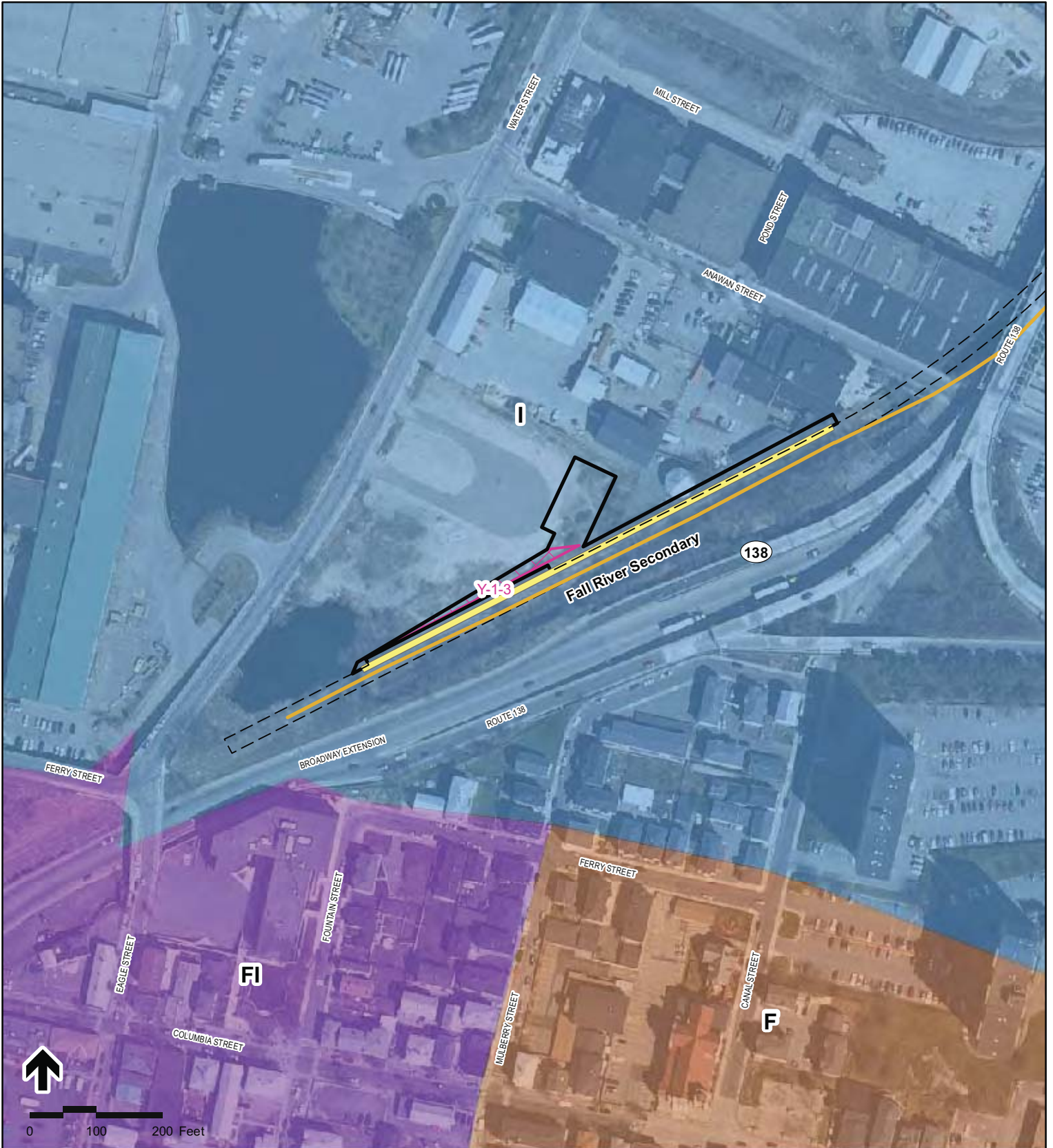
- Proposed Alternative Alignment
- Limit of Work for Proposed Station
- Limit of Permanent Impact for Proposed Rail
- Parking Area
- Platform
- Land Acquisition
- XX-XXX Parcel ID

Environmental Justice Populations

- | | |
|------|-----|
| F | I |
| FI | IE |
| FIE | IM |
| FIM | IME |
| FIME | M |
| FM | ME |
| FME | |

F - Meets foreign born criteria
 I - Meets income criteria
 M - Meets minority criteria
 E - Meets english language fluency criteria

Figure 4.4-15
 Fall River Depot Station -
 Environmental Justice Neighborhoods



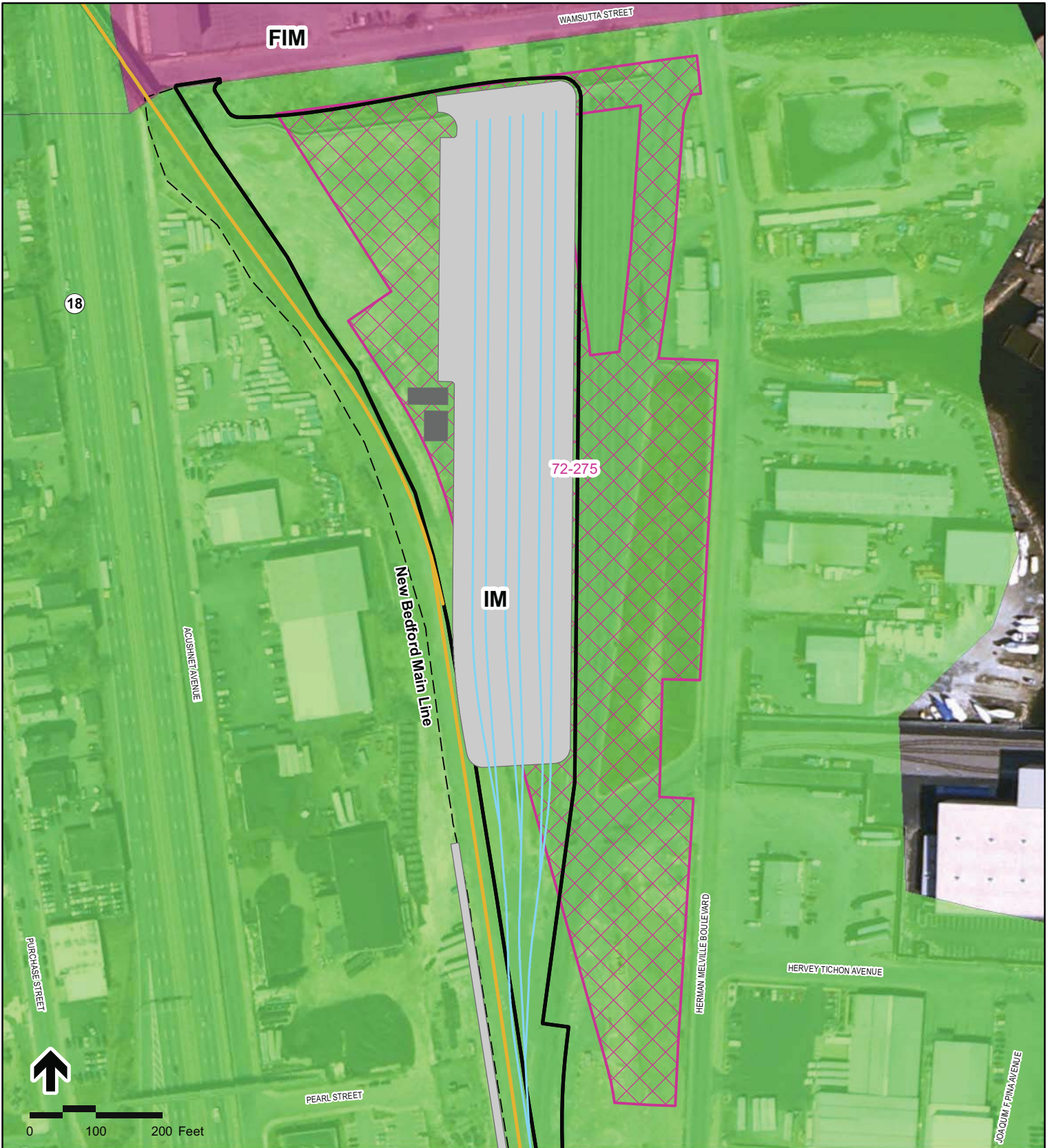
Legend

- Proposed Alternative Alignment
- Limit of Work for Proposed Station
- Limit of Permanent Impact for Proposed Rail
- Parking Area
- Platform
- Land Acquisition
- Parcel ID

Environmental Justice Populations

- | | |
|------|-----|
| F | I |
| FI | IE |
| FIE | IM |
| FIM | IME |
| FIME | M |
| FM | ME |
| FME | |
- F - Meets foreign born criteria
 I - Meets income criteria
 M - Meets minority criteria
 E - Meets english language fluency criteria*

Figure 4.4-16
 Battleship Cove Station -
 Environmental Justice Neighborhoods



Legend

- Proposed Alternative Alignment
- Limit of Work for Proposed Layover
- Limit of Permanent Impact for Proposed Rail
- Proposed Pavement
- Proposed Building
- Land Acquisition
- XX-XXX Parcel ID

Environmental Justice Populations

- | | |
|--|---|
| F | I |
| FI | IE |
| FIE | IM |
| FIM | IME |
| FIME | M |
| FM | ME |
| FME | |
- F - Meets foreign born criteria
 I - Meets income criteria
 M - Meets minority criteria
 E - Meets english language fluency criteria*

Figure 4.4-17
 Wamsutta Site Layover Facility -
 Environmental Justice Neighborhoods



Printing Date: 6/22/2012
 File: EnvironmentalImpact\0111_0203\Springs\FBSE\FallRiver_Pripe_4.5.mxd

- | | | | | | |
|--|--|--|--|---|--|
| Legend
○ MBTA Commuter Rail Station
— MBTA Commuter Rail
- - Town Boundaries
● Proposed Stations
— South Coast Rail
■ Proposed Station Platform
□ Traction Power Station
† Places of Worship
● Schools | | Noise Impacts and Mitigation
● Residential Severe Impact
● Residential Impact
- - Severe Impact
- - Impact
— Proposed Noise Barrier
Vibration Mitigation
- - Vibration Mitigation | | Environmental Justice Populations
F
FI
FIE
FIM
FIME
FM
FME
I
IE
IM
IME
M
ME | |
|--|--|--|--|---|--|
- F - Meets foreign born criteria*
I - Meets income criteria
M - Meets minority criteria
E - Meets english language fluency criteria

Figure 4.4-18a
 Environmental Justice Noise Impacts and
 Mitigation and Vibration Mitigation Fall
 River Secondary



Printing Date: 6/28/2022
 File: W:\GIS\MapServer\10111_0005\workspace\FEISE_A\FallRiver_Pages_4_4.mxd

Legend

- MBTA Commuter Rail Station
- MBTA Commuter Rail
- Town Boundaries
- Proposed Stations
- South Coast Rail
- Proposed Station Platform
- Traction Power Station
- Places of Worship
- Schools

Noise Impacts and Mitigation

- Residential Severe Impact
- Residential Impact
- Severe Impact
- Impact
- Proposed Noise Barrier
- Vibration Mitigation

Vibration Mitigation

- Vibration Mitigation

Environmental Justice Populations

- F
- FI
- FIE
- FIME
- FM
- FME
- I
- IE
- IM
- IME
- M
- ME

F - Meets foreign born criteria
 I - Meets income criteria
 M - Meets minority criteria
 E - Meets english language fluency criteria

Index Map

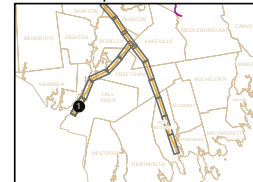


Figure 4.4-18b
Environmental Justice Noise Impacts and Mitigation and Vibration Mitigation Fall River Secondary



- Legend**
- MBTA Commuter Rail Station
 - MBTA Commuter Rail
 - Town Boundaries
 - Proposed Stations
 - South Coast Rail

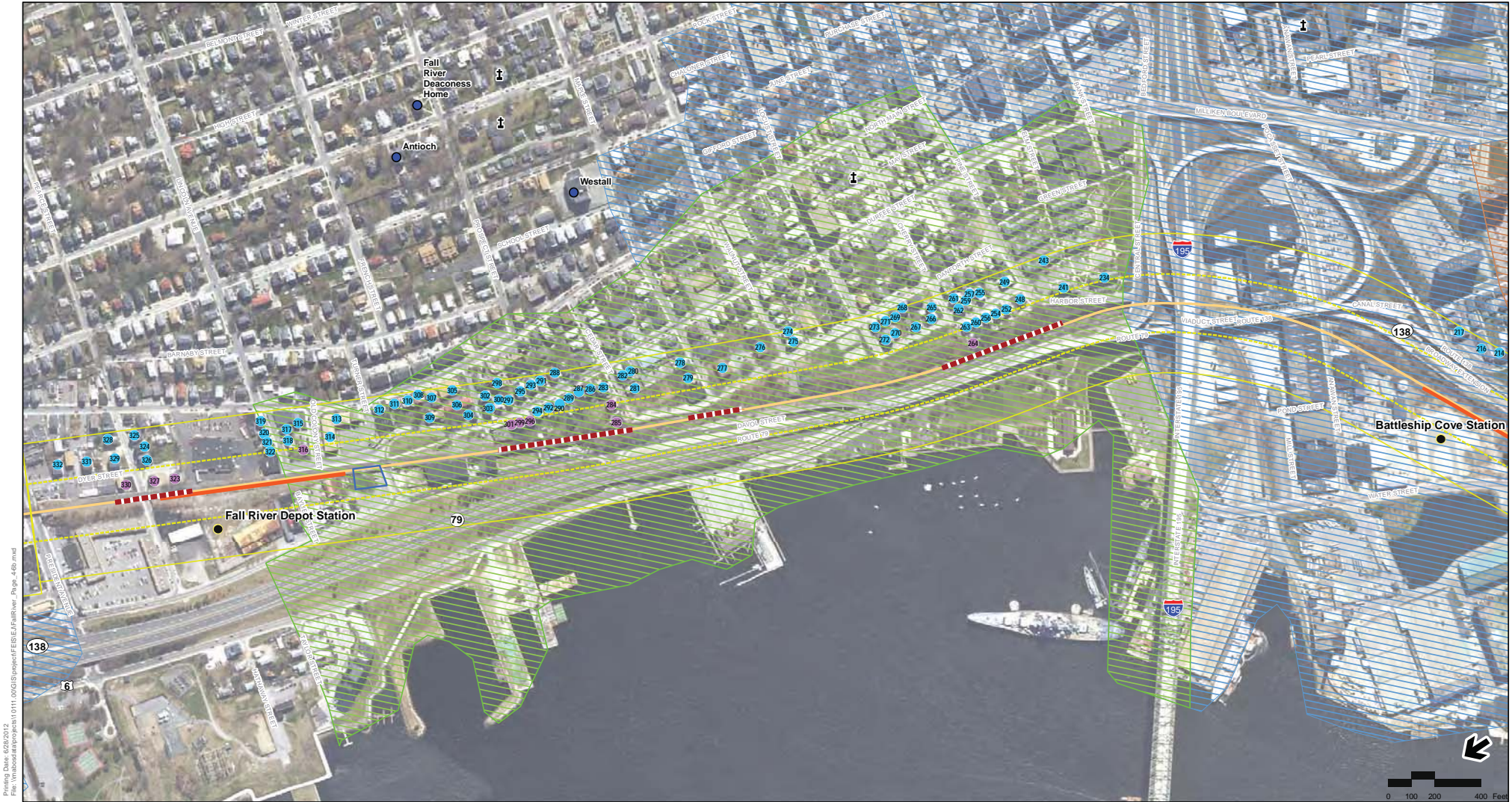
- Proposed Station Platform
- Traction Power Station
- ⚓ Places of Worship
- Schools

- Noise Impacts and Mitigation**
- Residential Severe Impact
 - Residential Impact
 - Severe Impact of Worship
 - Impact
 - Proposed Noise Barrier

- Vibration Mitigation**
- Vibration Mitigation

- Environmental Justice Populations**
- | | |
|--------|-------|
| ▨ F | ▨ IE |
| ▨ FI | ▨ IM |
| ▨ FIE | ▨ IME |
| ▨ FIM | ▨ MI |
| ▨ FIME | ▨ ME |
| ▨ FM | |
| ▨ FME | |
| ▨ I | |
- F - Meets foreign born criteria*
I - Meets income criteria
M - Meets minority criteria
E - Meets english language fluency criteria

Figure 4.4-18c
 Environmental Justice Noise Impacts and Mitigation and Vibration Mitigation Fall River Secondary (Detail)



Paving Date: 02/08/2015
 File Path: \\p0111\000\GIS\Power\FE\ES\FallRiver_Pave_4db.mxd

Legend

- MBTA Commuter Rail Station
- MBTA Commuter Rail
- Town Boundaries
- Proposed Stations
- South Coast Rail
- Proposed Station Platform
- Traction Power Station
- ⚡ Places of Worship
- Schools

Noise Impacts and Mitigation

- Residential Severe Impact
- Residential Impact
- Severe Impact
- Impact
- Proposed Noise Barrier

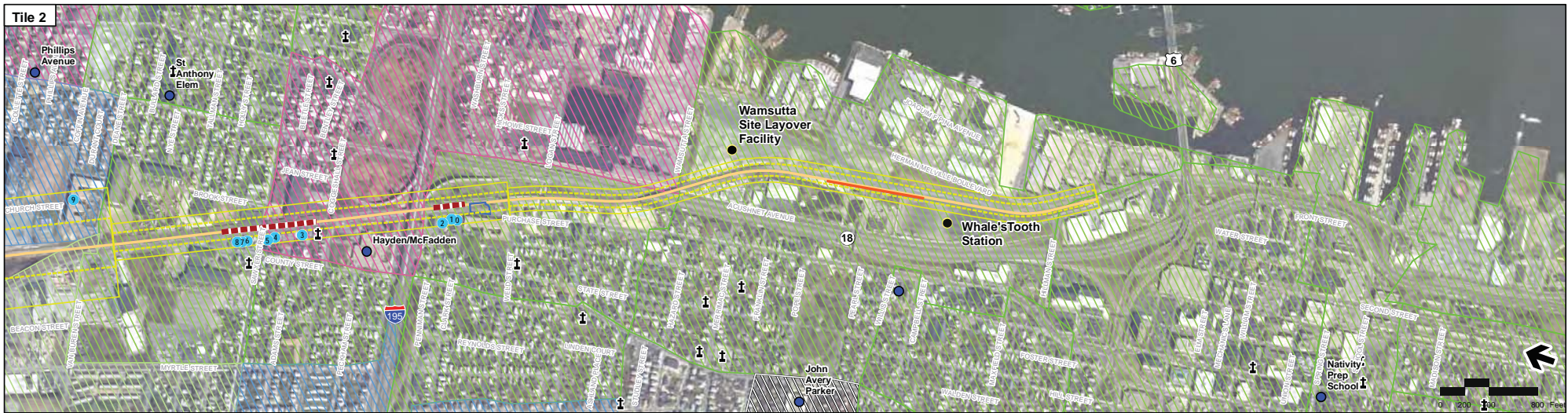
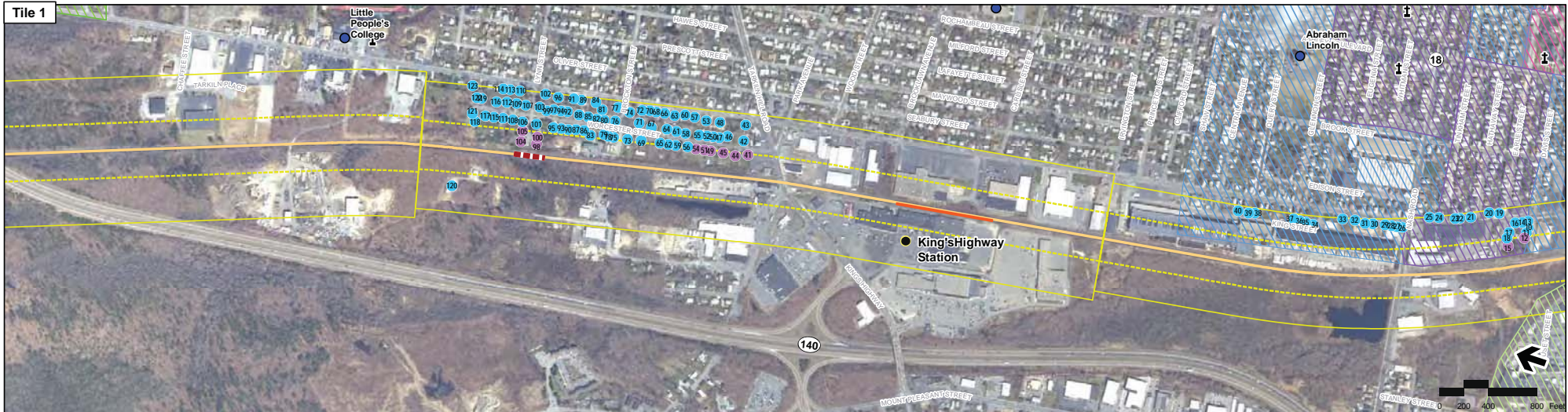
Vibration Mitigation

- Vibration Mitigation

Environmental Justice Populations

- | | |
|--------|-------|
| ■ F | ■ IE |
| ■ FI | ■ IM |
| ■ FIE | ■ IME |
| ■ FIM | ■ M |
| ■ FIME | ■ ME |
| ■ FM | |
| ■ FME | |
| ■ I | |
- F - Meets foreign born criteria*
I - Meets income criteria
M - Meets minority criteria
E - Meets english language fluency criteria

Figure 4.4-18d
 Environmental Justice Noise Impacts and
 Mitigation and Vibration Mitigation Fall
 River Secondary (Detail)



Printing Date: 02/20/2012
 File: W:\GIS\Projects\FEBE\New Bedford_Fig_4.4.mxd

- Legend**
- MBTA Commuter Rail Station
 - MBTA Commuter Rail
 - Town Boundaries
 - Proposed Stations
 - South Coast Rail

- Proposed Station Platform
- Traction Power Station
- ⚡ Places of Worship
- Schools

- Noise Impacts and Mitigation**
- Residential Severe Impact
 - Residential Impact
 - Severe Impact
 - Impact
 - Proposed Noise Barrier

- Vibration Mitigation**
- Vibration Mitigation

Environmental Justice Populations

- | | |
|--------|-------|
| ▨ F | ▨ IE |
| ▨ FI | ▨ IM |
| ▨ FIE | ▨ IME |
| ▨ FIM | ▨ M |
| ▨ FIME | ▨ ME |
| ▨ FM | |
| ▨ FME | |
| ▨ I | |
- F - Meets foreign born criteria*
I - Meets income criteria
M - Meets minority criteria
E - Meets english language fluency criteria

Index Map

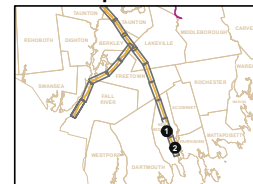


Figure 4.4-19
Environmental Justice Noise Impacts and Mitigation and Vibration Mitigation New Bedford Main Line



Printing Date: 6/26/2012
 File: W:\GIS\Projects\10111_02\GIS\Project\FBSE\Stoughton_Pages_4-1.mxd

- Legend**
- MBTA Commuter Rail Station
 - MBTA Commuter Rail
 - Town Boundaries
 - Proposed Stations
 - South Coast Rail
 - Proposed Station Platform
 - Traction Power Station
 - Places of Worship
 - Schools

- Noise Impacts and Mitigation**
- Residential Severe Impact
 - Residential Impact
 - Severe Impact
 - Impact
 - Proposed Noise Barrier
 - Vibration Mitigation

- Environmental Justice Populations**
- | | |
|------|-----|
| F | IE |
| FI | IM |
| FIE | IME |
| FIM | M |
| FIME | ME |
| FM | |
| FME | |
| I | |
- F - Meets foreign born criteria*
I - Meets income criteria
M - Meets minority criteria
E - Meets english language fluency criteria

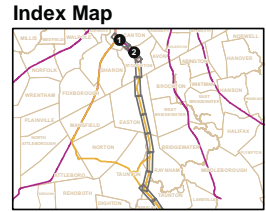
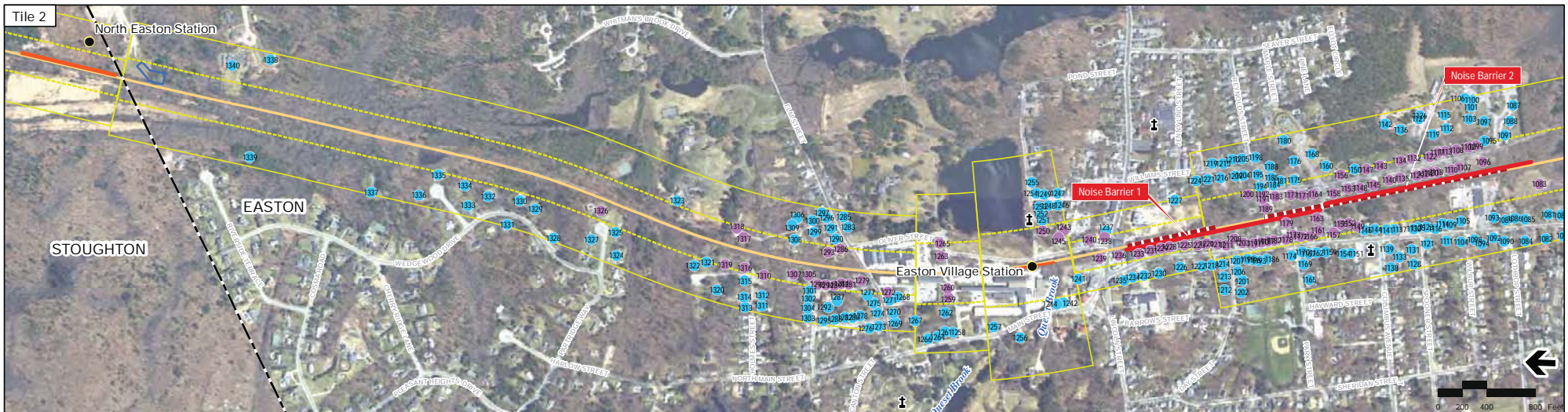


Figure 4.4-20a

Environmental Justice Noise Impacts and Mitigation and Vibration Mitigation Stoughton Line



Printing Date: 6/26/2012
 File: \\msb\share\proj\10111\DCGIS\workspace\FSEVE\AS\stoughton_page_4_2.mxd

- | | | | | | | | | | | | | | | | | | | |
|--|---|--|-----|------|------|------|-------|-------|-------|-----|--------|------|------|--|-------|--|-----|--|
| <p>Legend</p> <ul style="list-style-type: none"> ○ MBTA Commuter Rail Station — MBTA Commuter Rail — Town Boundaries ● Proposed Stations — South Coast Rail ■ Proposed Station Platform □ Traction Power Station ⚡ Places of Worship ● Schools | <p>Noise Impacts and Mitigation</p> <ul style="list-style-type: none"> ● Residential Severe Impact ● Residential Impact ● Severe Impact ● Impact — Proposed Noise Barrier <p>Vibration Mitigation</p> <ul style="list-style-type: none"> ■ Vibration Mitigation | <p>Environmental Justice Populations</p> <table border="0"> <tr> <td>▨ F</td> <td>▨ IE</td> </tr> <tr> <td>▨ FI</td> <td>▨ IM</td> </tr> <tr> <td>▨ FIE</td> <td>▨ IME</td> </tr> <tr> <td>▨ FIM</td> <td>▨ M</td> </tr> <tr> <td>▨ FIME</td> <td>▨ ME</td> </tr> <tr> <td>▨ FM</td> <td></td> </tr> <tr> <td>▨ FME</td> <td></td> </tr> <tr> <td>▨ I</td> <td></td> </tr> </table> <p>F - Meets foreign born criteria
 I - Meets income criteria
 M - Meets minority criteria
 E - Meets english language fluency criteria</p> | ▨ F | ▨ IE | ▨ FI | ▨ IM | ▨ FIE | ▨ IME | ▨ FIM | ▨ M | ▨ FIME | ▨ ME | ▨ FM | | ▨ FME | | ▨ I | |
| ▨ F | ▨ IE | | | | | | | | | | | | | | | | | |
| ▨ FI | ▨ IM | | | | | | | | | | | | | | | | | |
| ▨ FIE | ▨ IME | | | | | | | | | | | | | | | | | |
| ▨ FIM | ▨ M | | | | | | | | | | | | | | | | | |
| ▨ FIME | ▨ ME | | | | | | | | | | | | | | | | | |
| ▨ FM | | | | | | | | | | | | | | | | | | |
| ▨ FME | | | | | | | | | | | | | | | | | | |
| ▨ I | | | | | | | | | | | | | | | | | | |

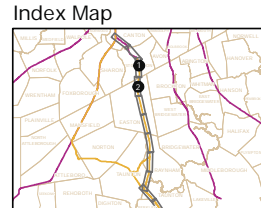
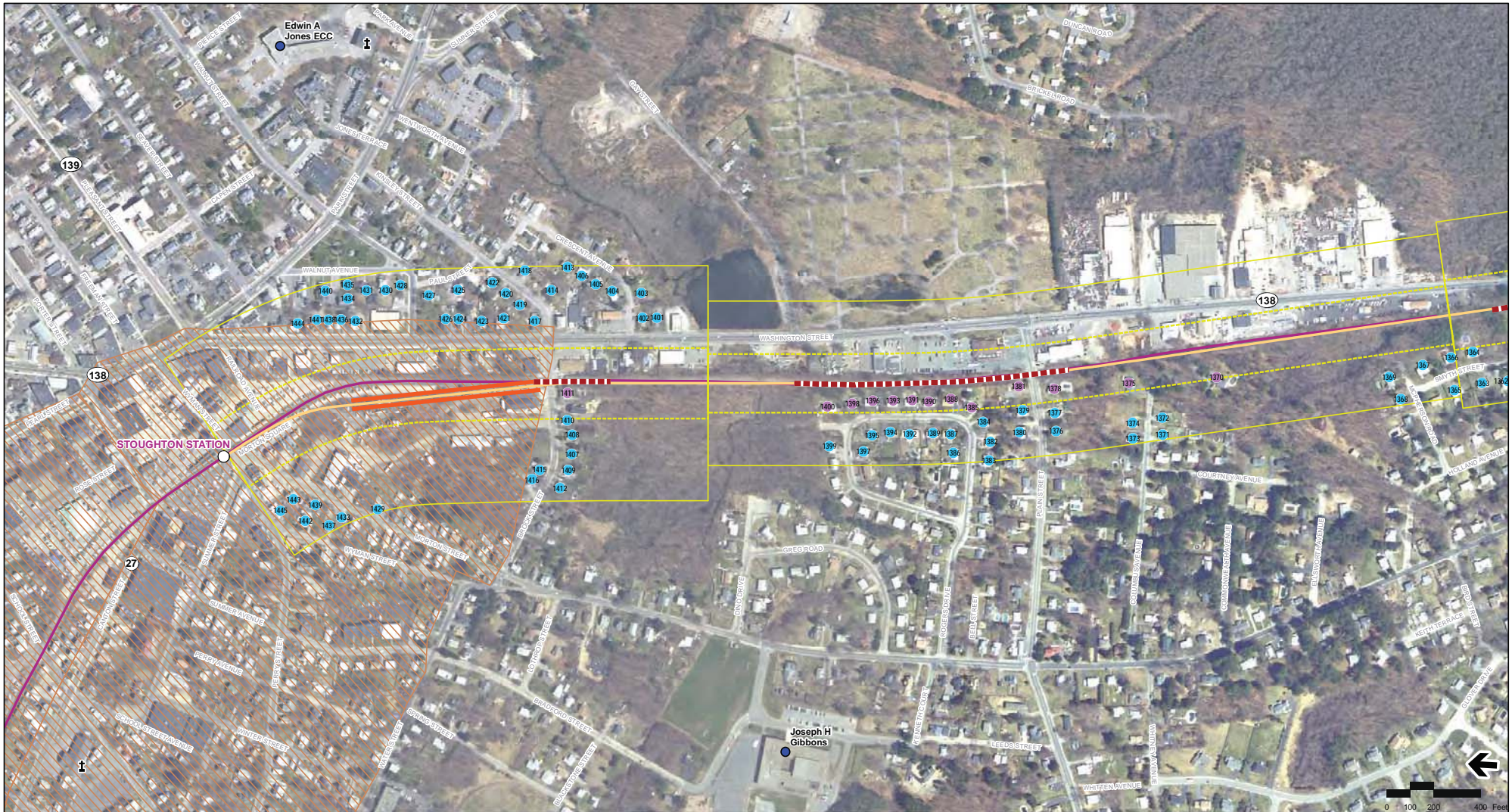


Figure 4.4-20b

Environmental Justice Noise Impacts and Mitigation and Vibration Mitigation Stoughton Line

Printing Date: 6/26/2012
 File: C:\msdms\proj\10111_02\GIS\mxd\FBSE\Noise_Stoughton_4-2a.mxd



- Legend**
- MBTA Commuter Rail Station
 - MBTA Commuter Rail
 - Town Boundaries
 - Proposed Stations
 - South Coast Rail

- ▨ Proposed Station Platform
- ▨ Traction Power Station
- ⚡ Places of Worship
- Schools

- Noise Impacts and Mitigation**
- Residential Severe Impact
 - Residential Impact
 - Severe Impact
 - Impact
 - Proposed Noise Barrier
- Vibration Mitigation**
- Vibration Mitigation

- Environmental Justice Populations**
- ▨ F
 - ▨ FI
 - ▨ FIE
 - ▨ FIM
 - ▨ FIME
 - ▨ FM
 - ▨ FME
 - ▨ I
 - ▨ IE
 - ▨ IM
 - ▨ IME
 - ▨ M
 - ▨ ME
- F - Meets foreign born criteria*
I - Meets income criteria
M - Meets minority criteria
E - Meets english language fluency criteria

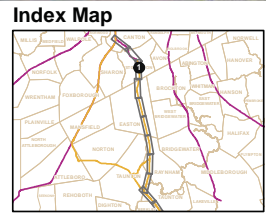
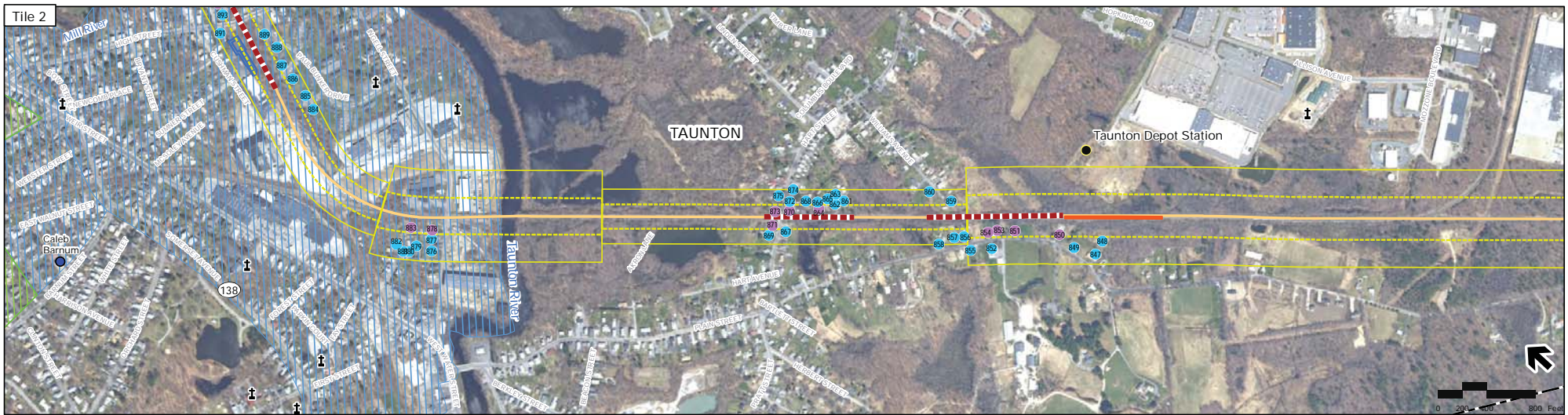


Figure 4.4-20c
 Environmental Justice Noise Impacts and
 Mitigation and Vibration Mitigation
 Stoughton Line (Detail)



Printing Date: 6/20/2012
 File Path: \\ms01\proj\GIS\Projects\GIS\ESRI\KSR\Proj\4.3.mxd

- Legend**
- MBTA Commuter Rail Station
 - MBTA Commuter Rail
 - - - Town Boundaries
 - Proposed Stations
 - South Coast Rail

- Proposed Station Platform
- Traction Power Station
- ⚡ Places of Worship
- Schools

Noise Impacts and Mitigation

- Residential Severe Impact
- Residential Impact
- Severe Impact
- Impact
- Proposed Noise Barrier

Vibration Mitigation

- Vibration Mitigation

Environmental Justice Populations

- | | |
|--------|-------|
| ▨ F | ▨ IE |
| ▨ FI | ▨ IM |
| ▨ FIE | ▨ IME |
| ▨ FIM | ▨ M |
| ▨ FIME | ▨ ME |
| ▨ FM | |
| ▨ FME | |
| ▨ I | |
- F - Meets foreign born criteria
 I - Meets income criteria
 M - Meets minority criteria
 E - Meets english language fluency criteria

Index Map

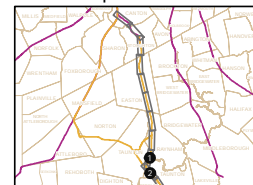


Figure 4.4-20d
 Environmental Justice Noise Impacts and
 Mitigation and Vibration Mitigation
 Stoughton Line