

\\mabosdata\projects\10111.00\graphics\FIGURES\Alternatives\_Description\10111\_Stoughton\_Construction\_Segments.dwg Printing Date: 11/20/2012 2:34 PM

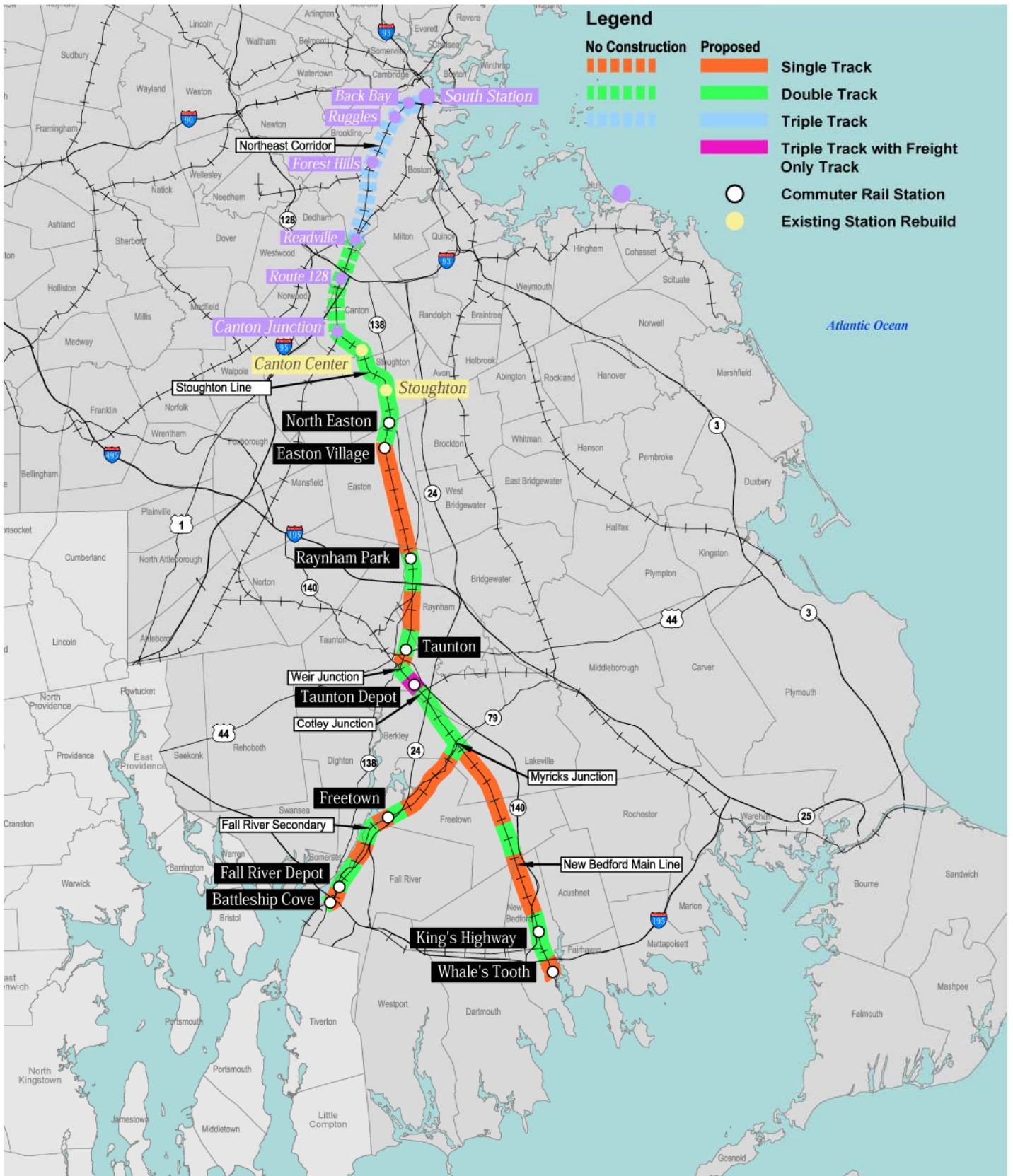


Figure 4.18-1  
Stoughton Alternative

\\mabosdata\projects\10111.00\graphics\FIGURES\Alternatives\_Description\10111\_Whittenton\_Construction\_Segments.dwg Printing Date: 11/20/2012 2:33 PM

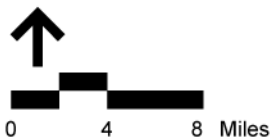
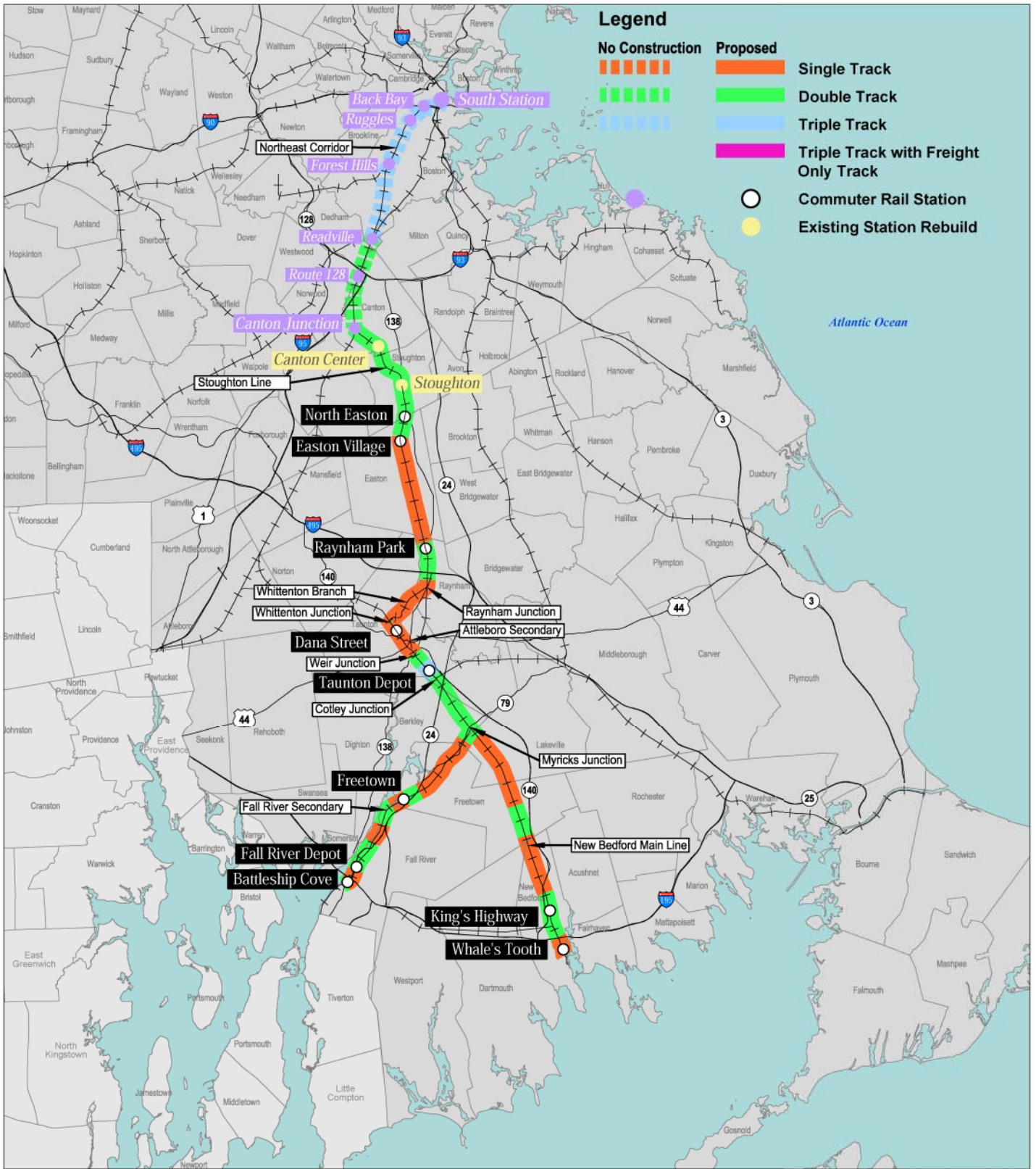
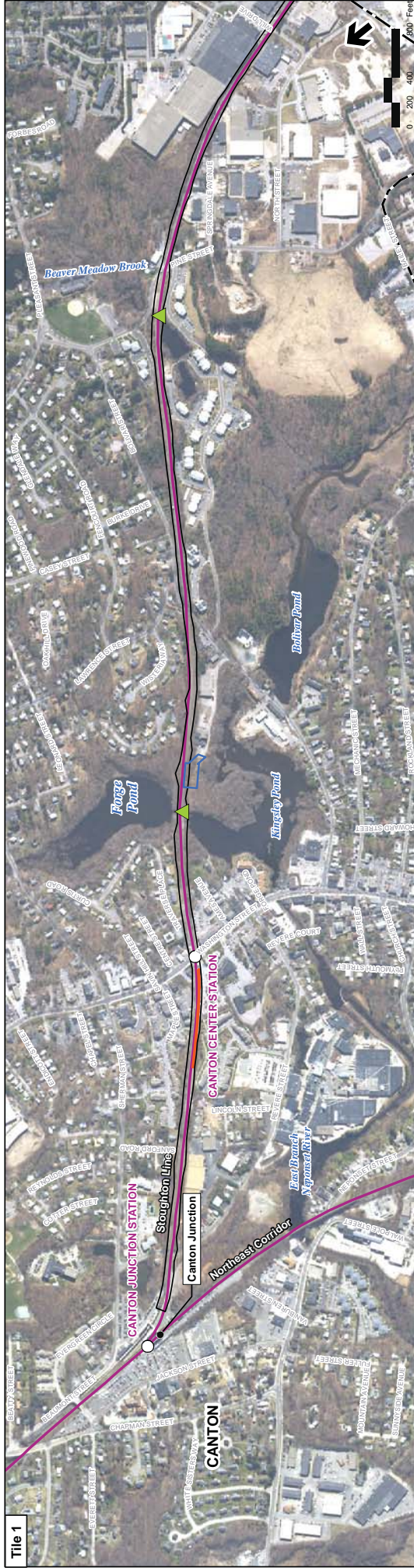


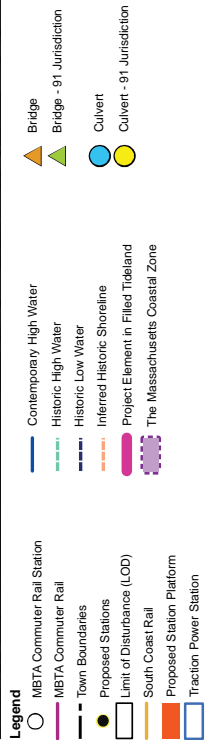
Figure 4.18-2  
Stoughton Alternative



Tile 1



Tile 2



Index Map

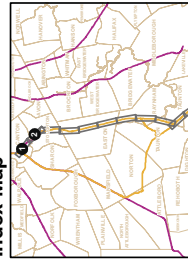


Figure 4.18-3  
Coastal Zone Management  
Stoughton Line

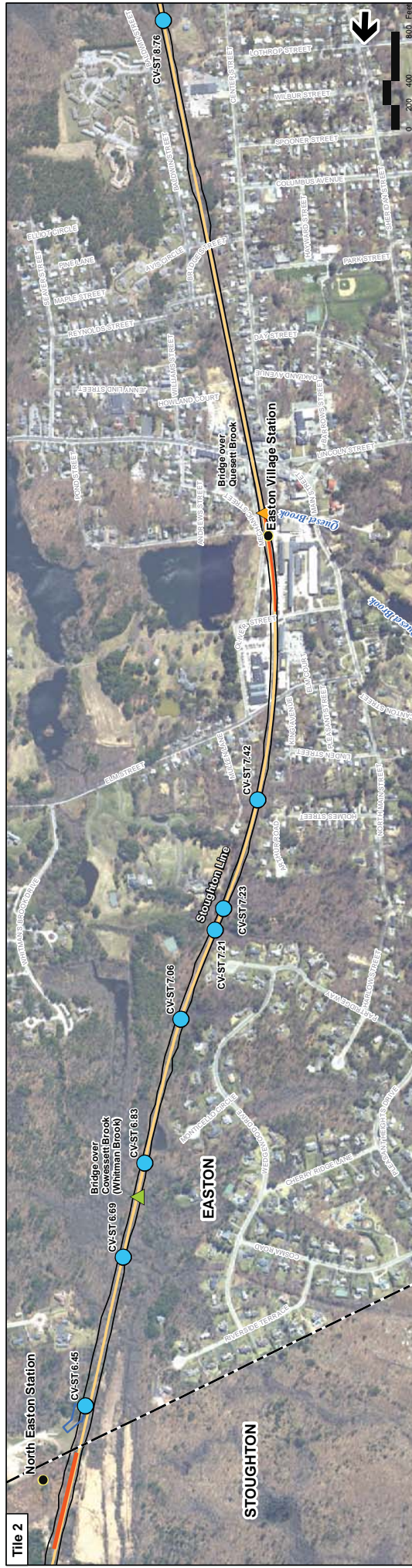
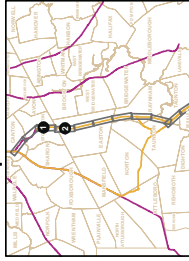


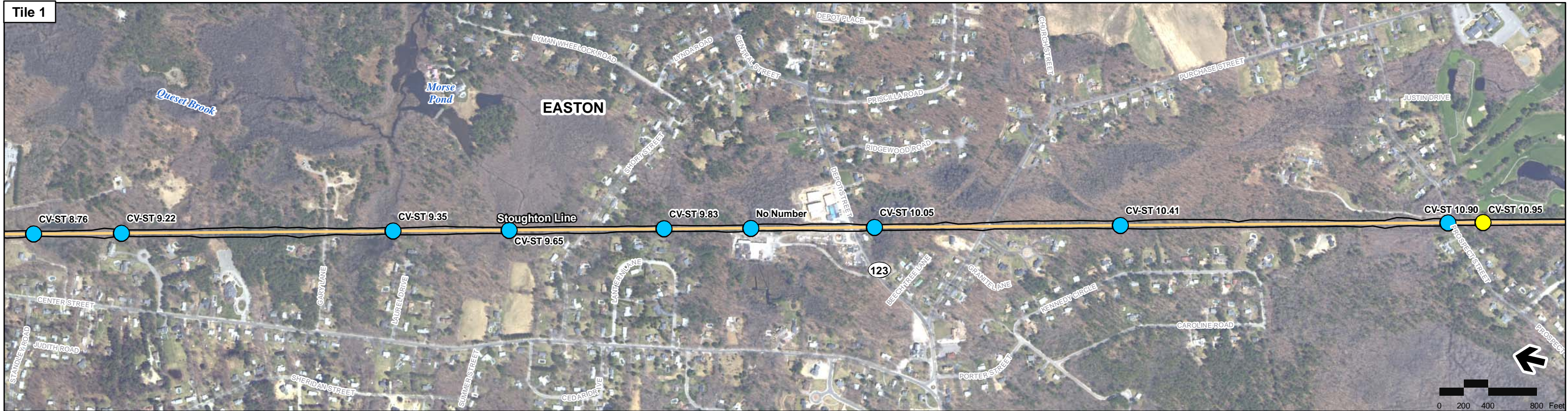
Figure 4.18-4  
Coastal Zone Management  
Stoughton Line



- Legend**
- MBTA Commuter Rail Station
  - MBTA Commuter Rail
  - Town Boundaries
  - Proposed Stations
  - Limit of Disturbance (LOD)
  - South Coast Rail
  - Proposed Station Platform
  - Traction Power Station
  - ▲ Bridge
  - ▲ Bridge - 91 Jurisdiction
  - Culvert
  - Culvert - 91 Jurisdiction
  - Contemporary High Water
  - Historic High Water
  - Historic Low Water
  - Inferred Historic Shoreline
  - Project Element in Filled Tideland
  - The Massachusetts Coastal Zone

Tile 1

Tile 2



Printing Date: 2/19/2013  
 File: \\msabos\projects\101111\_00\GIS\project\FEIS\CZM\_Chap91\Stoughton\_Pages3.mxd

- Legend**
- MBTA Commuter Rail Station
  - MBTA Commuter Rail
  - Town Boundaries
  - Proposed Stations
  - Limit of Disturbance (LOD)
  - South Coast Rail
  - Proposed Station Platform
  - Traction Power Station
  - Contemporary High Water
  - Historic High Water
  - Historic Low Water
  - Inferred Historic Shoreline
  - Project Element in Filled Tideland
  - The Massachusetts Coastal Zone
  - ▲ Bridge
  - ▲ Bridge - 91 Jurisdiction
  - Culvert
  - Culvert - 91 Jurisdiction

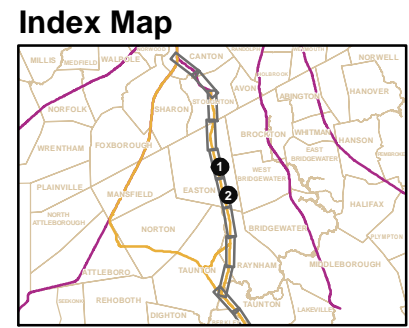
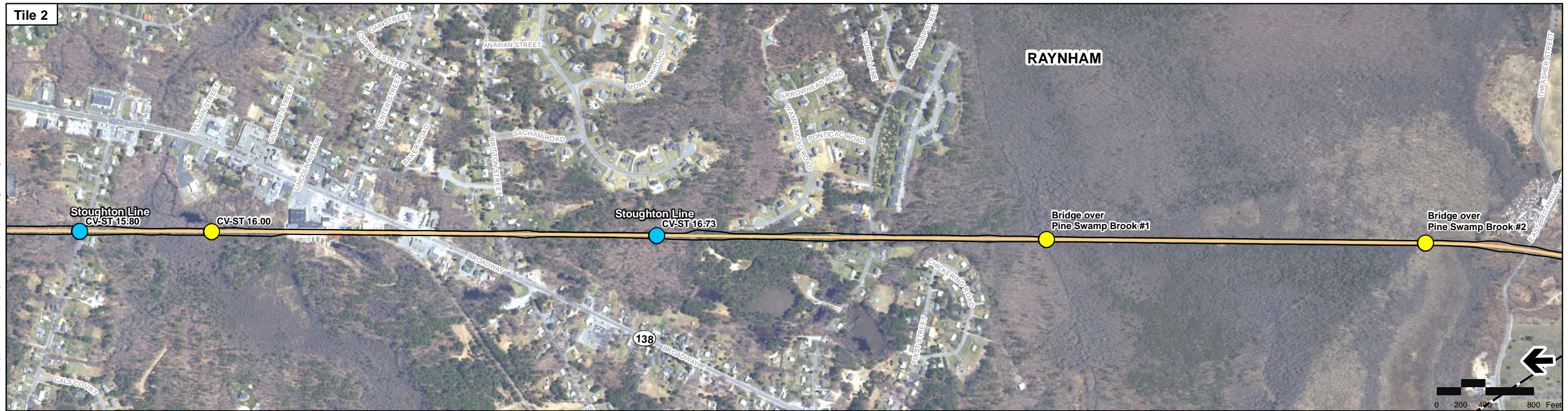
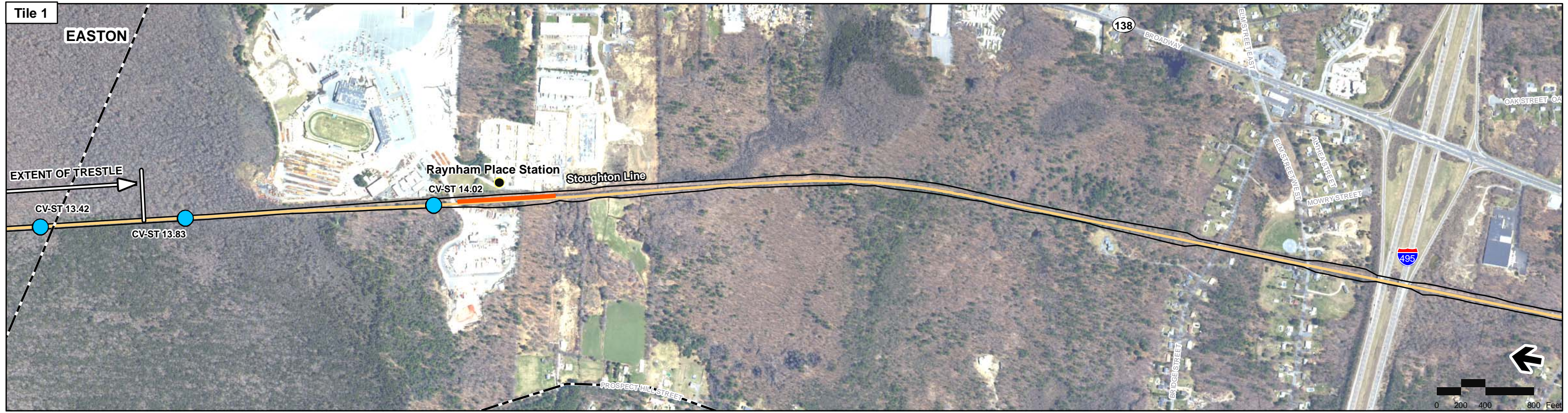
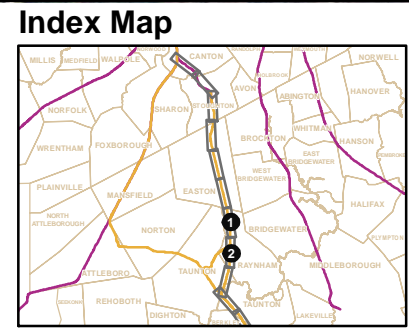


Figure 4.18-5  
Coastal Zone Management  
Stoughton Line



Printing Date: 2/19/2013  
 File: \\mabos\projects\10111\_00\GIS\project\FEIS\CZM\_Chap9\1 Stoughton\_Page4.mxd

- Legend**
- MBTA Commuter Rail Station
  - MBTA Commuter Rail
  - - - Town Boundaries
  - Proposed Stations
  - Limit of Disturbance (LOD)
  - South Coast Rail
  - Proposed Station Platform
  - Traction Power Station
  - Contemporary High Water
  - Historic High Water
  - Historic Low Water
  - Inferred Historic Shoreline
  - Project Element in Filled Tideland
  - The Massachusetts Coastal Zone
  - ▲ Bridge
  - ▲ Bridge - 91 Jurisdiction
  - Culvert
  - Culvert - 91 Jurisdiction



**Figure 4.18-6**  
**Coastal Zone Management**  
**Stoughton Line**

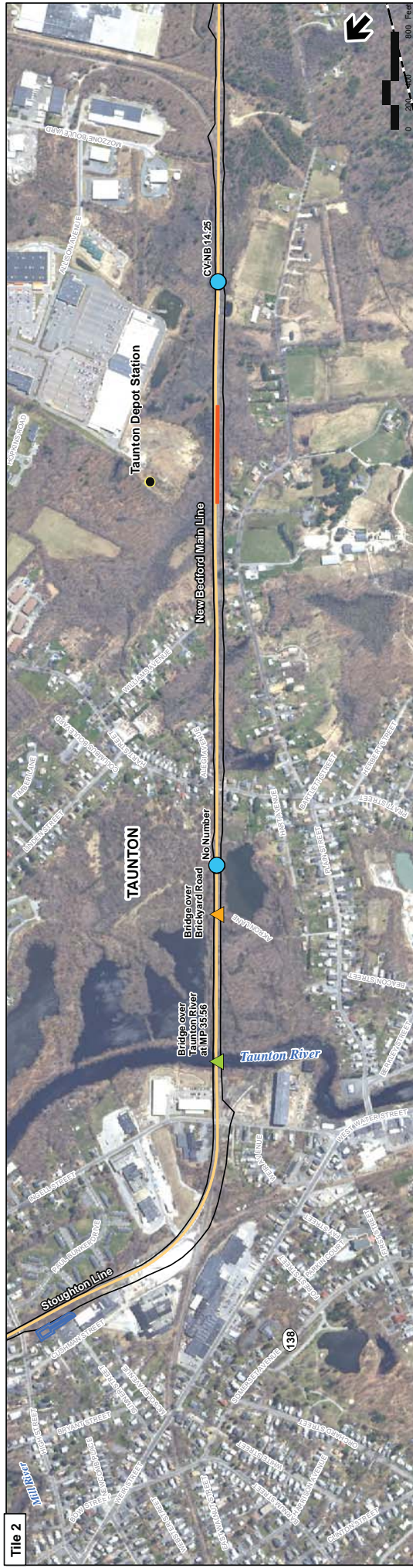
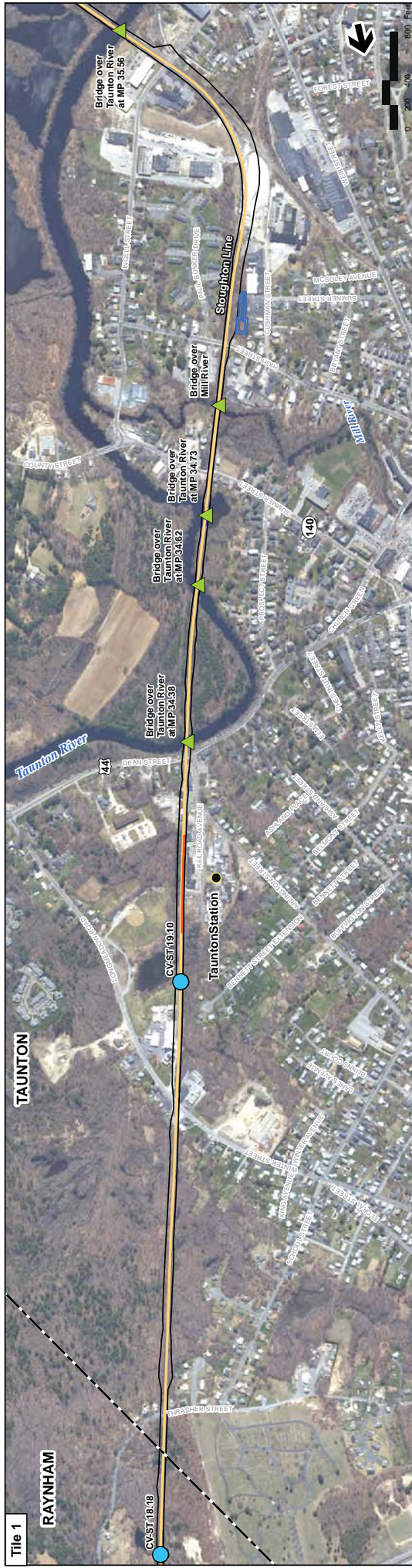
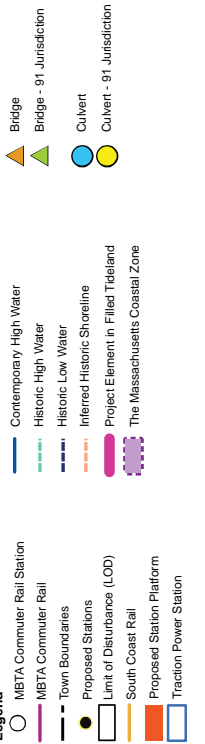
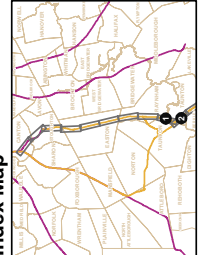
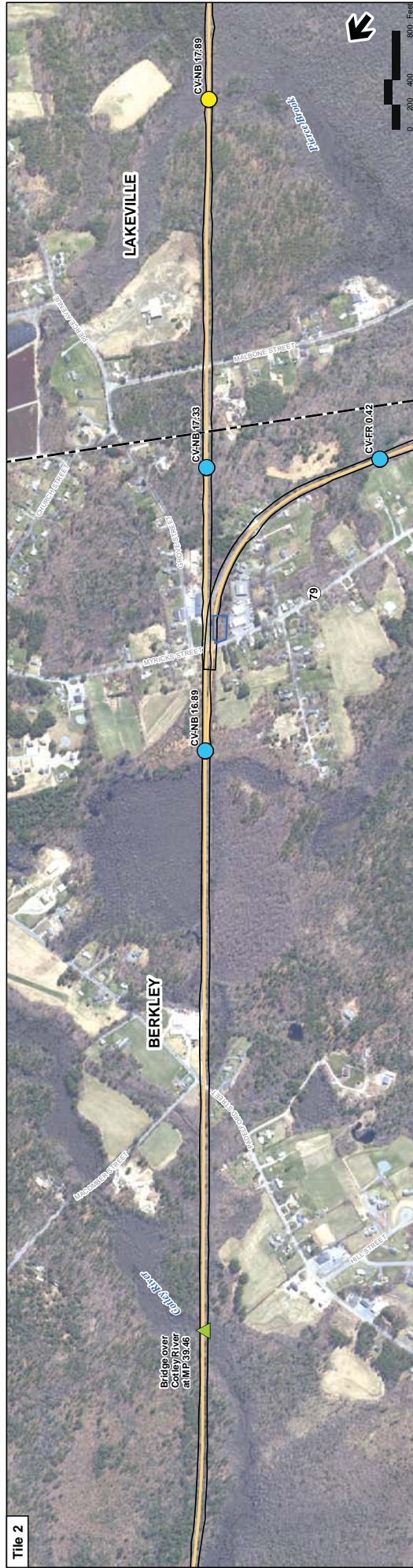


Figure 4.18-7  
Coastal Zone Management  
Stoughton Line/  
New Bedford Main Line





**Legend**

- MBTA Commuter Rail Station
- MBTA Commuter Rail
- Town Boundaries
- Proposed Stations
- Limit of Disturbance (LOD)
- South Coast Rail
- Proposed Station Platform
- Traction Power Station

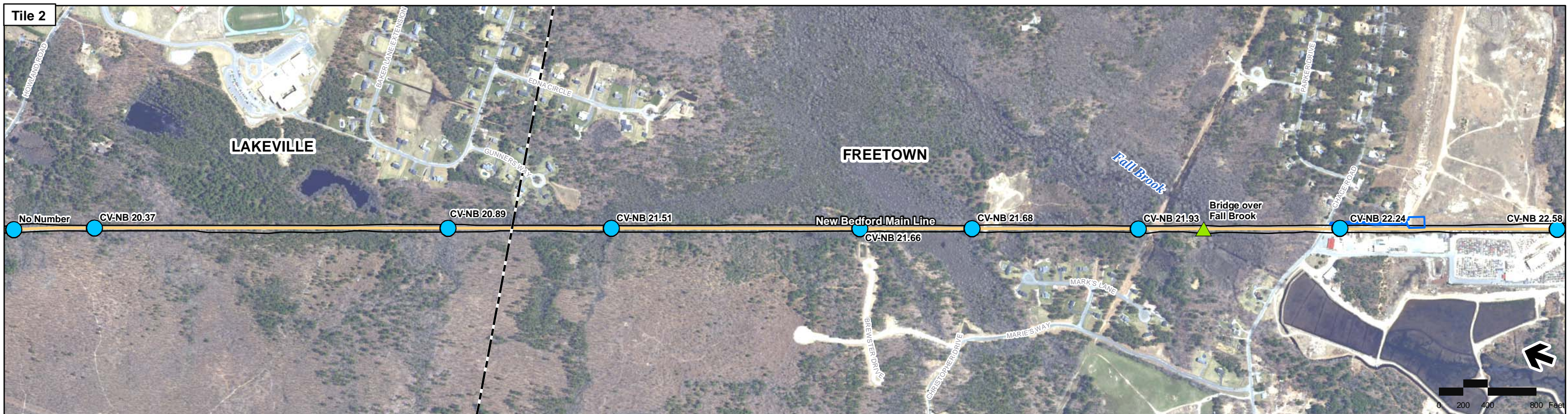
- Contemporary High Water
- Historic High Water
- Historic Low Water
- Inferred Historic Shoreline
- Project Element in Filled Tideland
- The Massachusetts Coastal Zone

- ▲ Bridge
- ▲ Bridge - 91 Jurisdiction
- Culvert
- Culvert - 91 Jurisdiction

**Figure 4.18-8**  
Coastal Zone Management  
New Bedford Main Line

**Index Map**





Printing Date: 2/19/2013  
 File: \\mabos\projects\10111\_00\CIS\project\FEIS\CZM\_Chap9\1NewBedford\_Pag02\_update.mxd

- Legend**
- MBTA Commuter Rail Station
  - MBTA Commuter Rail
  - Town Boundaries
  - Proposed Stations
  - Limit of Disturbance (LOD)
  - South Coast Rail
  - Proposed Station Platform
  - Traction Power Station
  - Contemporary High Water
  - Historic High Water
  - Historic Low Water
  - Inferred Historic Shoreline
  - Project Element in Filled Tideland
  - The Massachusetts Coastal Zone
  - Bridge
  - Bridge - 91 Jurisdiction
  - Culvert
  - Culvert - 91 Jurisdiction

**Index Map**

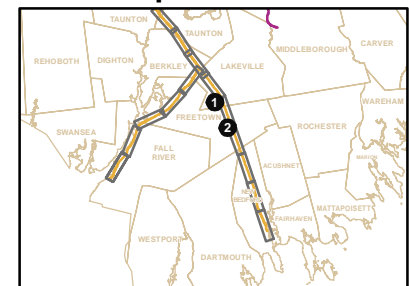


Figure 4.18-9  
 Coastal Zone Management  
 New Bedford Main Line



Printing Date: 2/19/2013  
 File: \\msbos\projects\10111\_00\GIS\project\FEIS\CZM\_Chap9\1NewBedford\_Pages3.mxd

- Legend**
- MBTA Commuter Rail Station
  - MBTA Commuter Rail
  - Town Boundaries
  - Proposed Stations
  - Limit of Disturbance (LOD)
  - South Coast Rail
  - Proposed Station Platform
  - Traction Power Station
  - Contemporary High Water
  - Historic High Water
  - Historic Low Water
  - Inferred Historic Shoreline
  - Project Element in Filled Tideland
  - The Massachusetts Coastal Zone
  - Bridge
  - Bridge - 91 Jurisdiction
  - Culvert
  - Culvert - 91 Jurisdiction

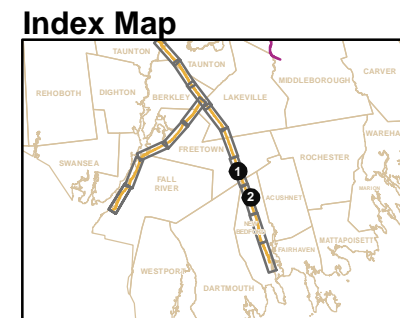
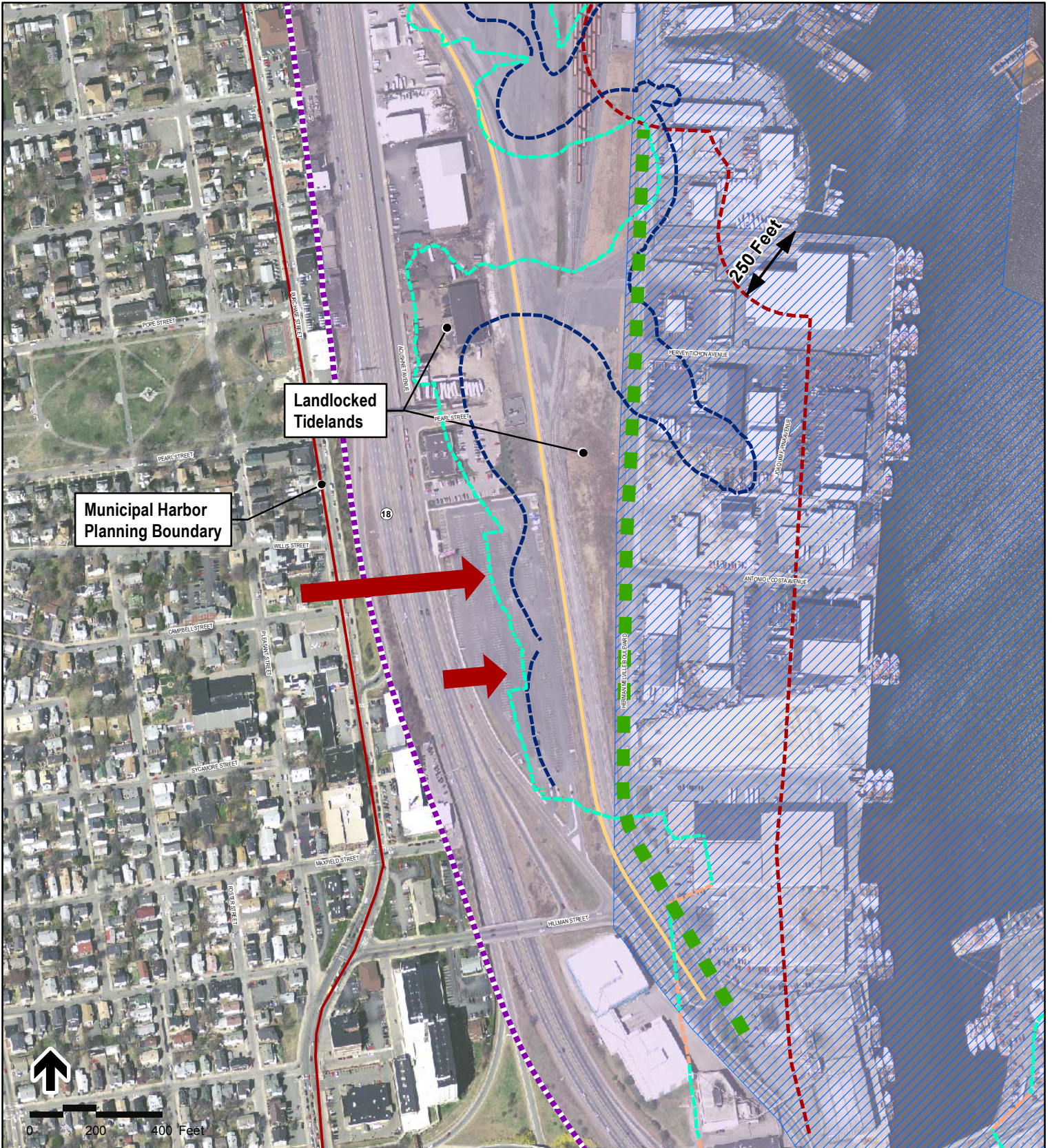


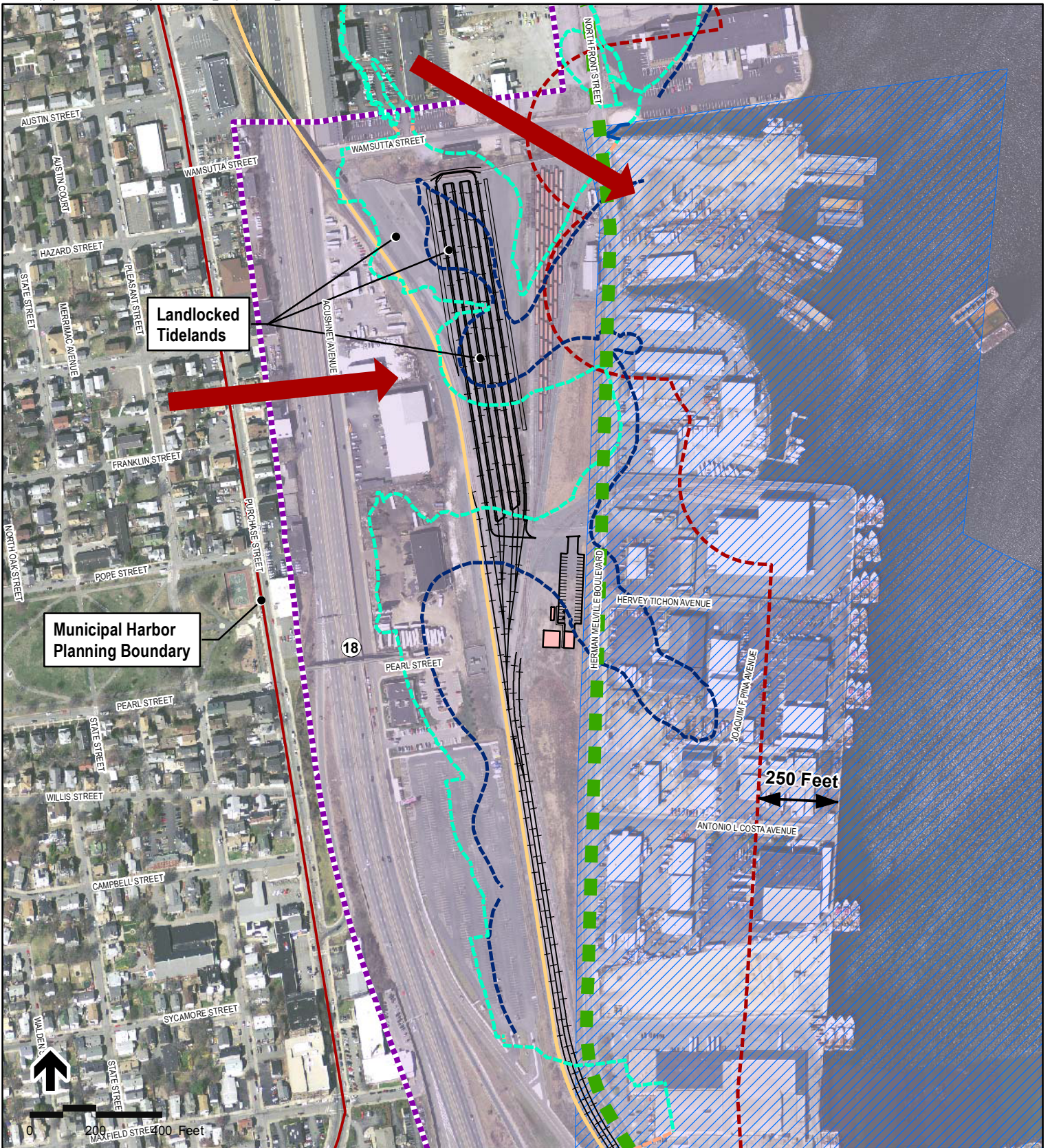
Figure 4.18-10  
 Coastal Zone Management  
 New Bedford Main Line



**Legend**

- Proposed Platform
- Proposed Alternative
- Contemporary High Water
- Historic High Water
- Historic Low Water
- Inferred Historic Shoreline
- 250 Foot Offset from Mean High Water
- First Intervening Public Way
- New Bedford/Fairhaven Designated Port Area
- The Massachusetts Coastal Zone
- Waterfront Views

Figure 4.18-11  
Coastal Zone and Chapter 91  
Jurisdiction Whale's  
Tooth Station



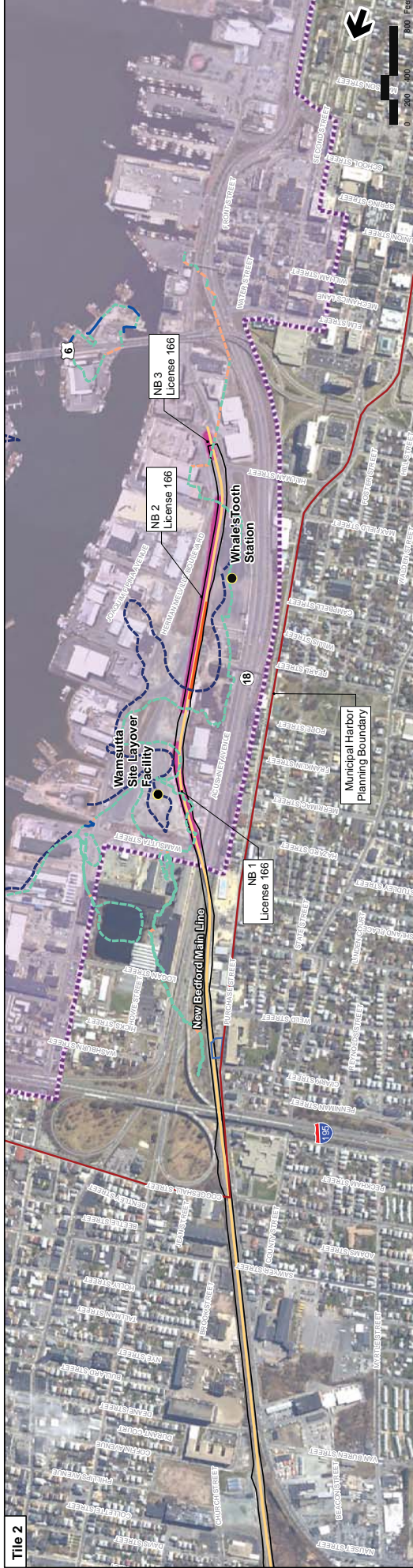
**Legend**

- Proposed Layover Building
- Proposed Layover Facility
- Proposed Alternative
- Contemporary High Water
- Historic High Water
- Historic Low Water
- Inferred Historic Shoreline
- 250 Foot Offset from Mean High Water
- First Intervening Public Way
- New Bedford/Fairhaven Designated Port Area
- The Massachusetts Coastal Zone
- Waterfront Views

Figure 4.18-12  
Coastal Zone and Chapter 91  
Jurisdiction Wamsutta  
Layover Facility



**Title 1**



**Title 2**

**Legend**

- MBTA Commuter Rail Station
- MBTA Commuter Rail
- Town Boundaries
- Proposed Stations
- Limit of Disturbance (LOD)
- South Coast Rail
- Proposed Station Platform
- Traction Power Station
- Contemporary High Water
- Historic High Water
- Historic Low Water
- Inferred Historic Shoreline
- Project Element in Filled Tideland
- The Massachusetts Coastal Zone
- Bridge
- Bridge - 91 Jurisdiction
- Culvert
- Culvert - 91 Jurisdiction

**Index Map**

**Figure 4.18-13**  
Coastal Zone Management  
New Bedford Main Line

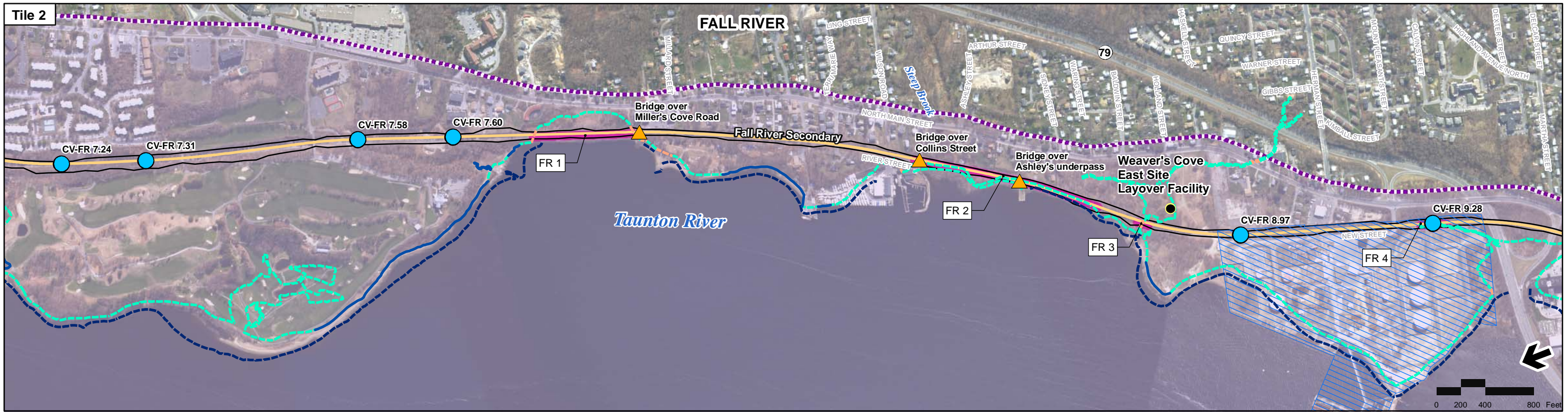


**Legend**

- MBTA Commuter Rail Station
- MBTA Commuter Rail
- Town Boundaries
- Proposed Stations
- Limit of Disturbance (LOD)
- South Coast Rail
- Proposed Station Platform
- Traction Power Station
- Contemporary High Water
- Historic High Water
- Historic Low Water
- Inferred Historic Shoreline
- Project Element in Filled Tideland
- The Massachusetts Coastal Zone
- ▲ Bridge
- ▲ Bridge - 91 Jurisdiction
- Culvert
- Culvert - 91 Jurisdiction

**Index Map**

**Figure 4.18-14**  
Coastal Zone Management  
Fall River Secondary



Printing Date: 3/15/2013  
 File: \\MA\BOS\projects\10111.00\GIS\project\FEIS\CZM\_Chap9\FallRiver\_L\_Page2.mxd

- Legend**
- MBTA Commuter Rail Station
  - MBTA Commuter Rail
  - Town Boundaries
  - Proposed Stations
  - Limit of Disturbance (LOD)
  - South Coast Rail
  - Proposed Station Platform
  - Traction Power Station
  - Contemporary High Water
  - Historic High Water
  - Historic Low Water
  - Inferred Historic Shoreline
  - Project Element in Filled Tideland
  - The Massachusetts Coastal Zone
  - Mt. Hope Bay Designated Port Area
  - Bridge
  - Bridge - 91 Jurisdiction
  - Culvert
  - Culvert - 91 Jurisdiction

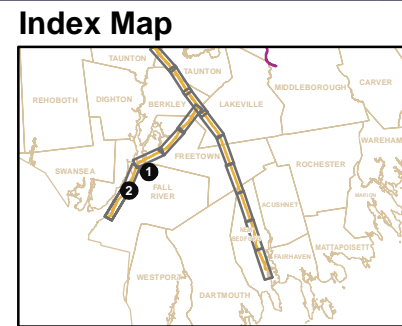
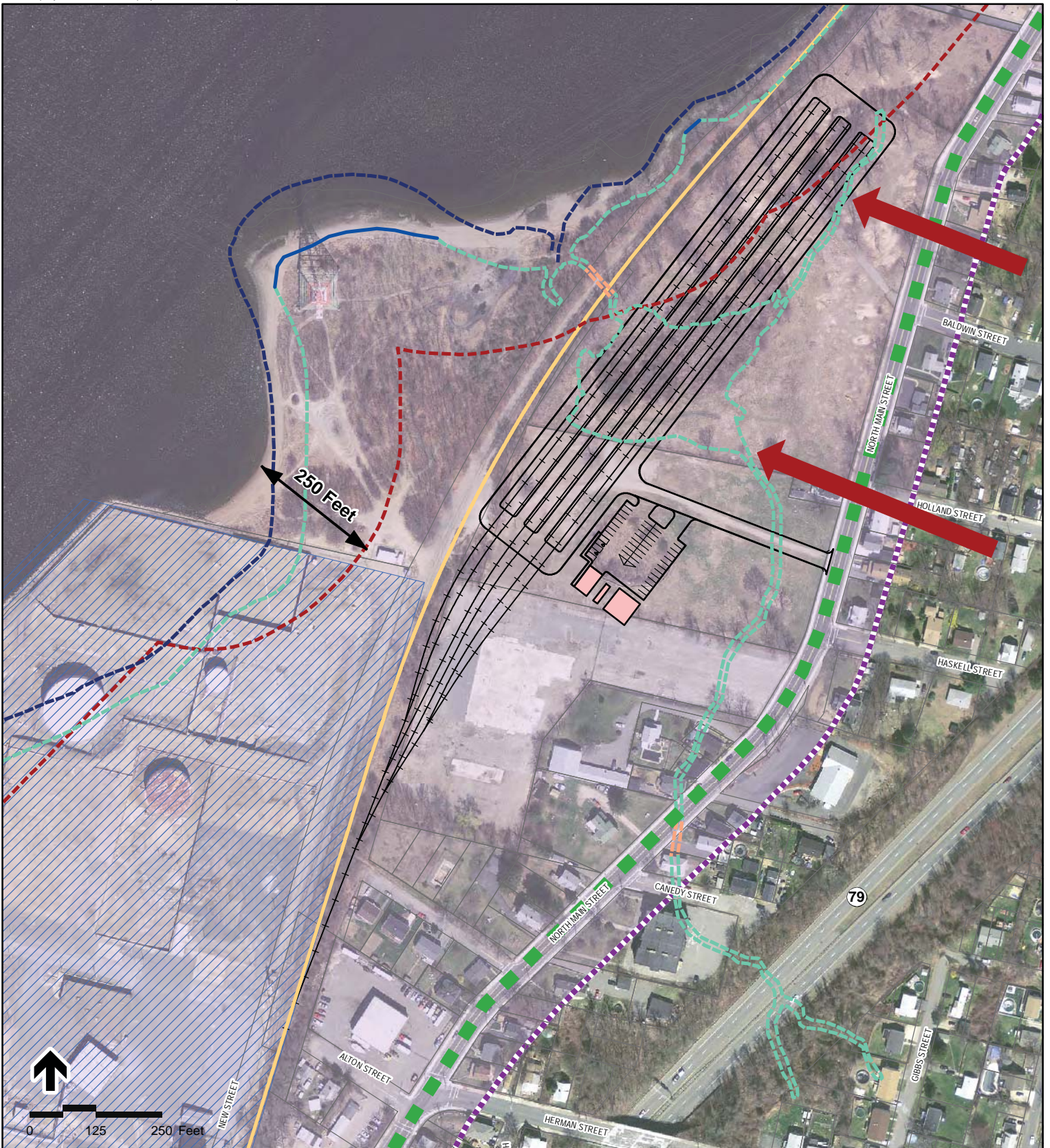


Figure 4.18-15  
 Coastal Zone Management  
 Fall River Secondary

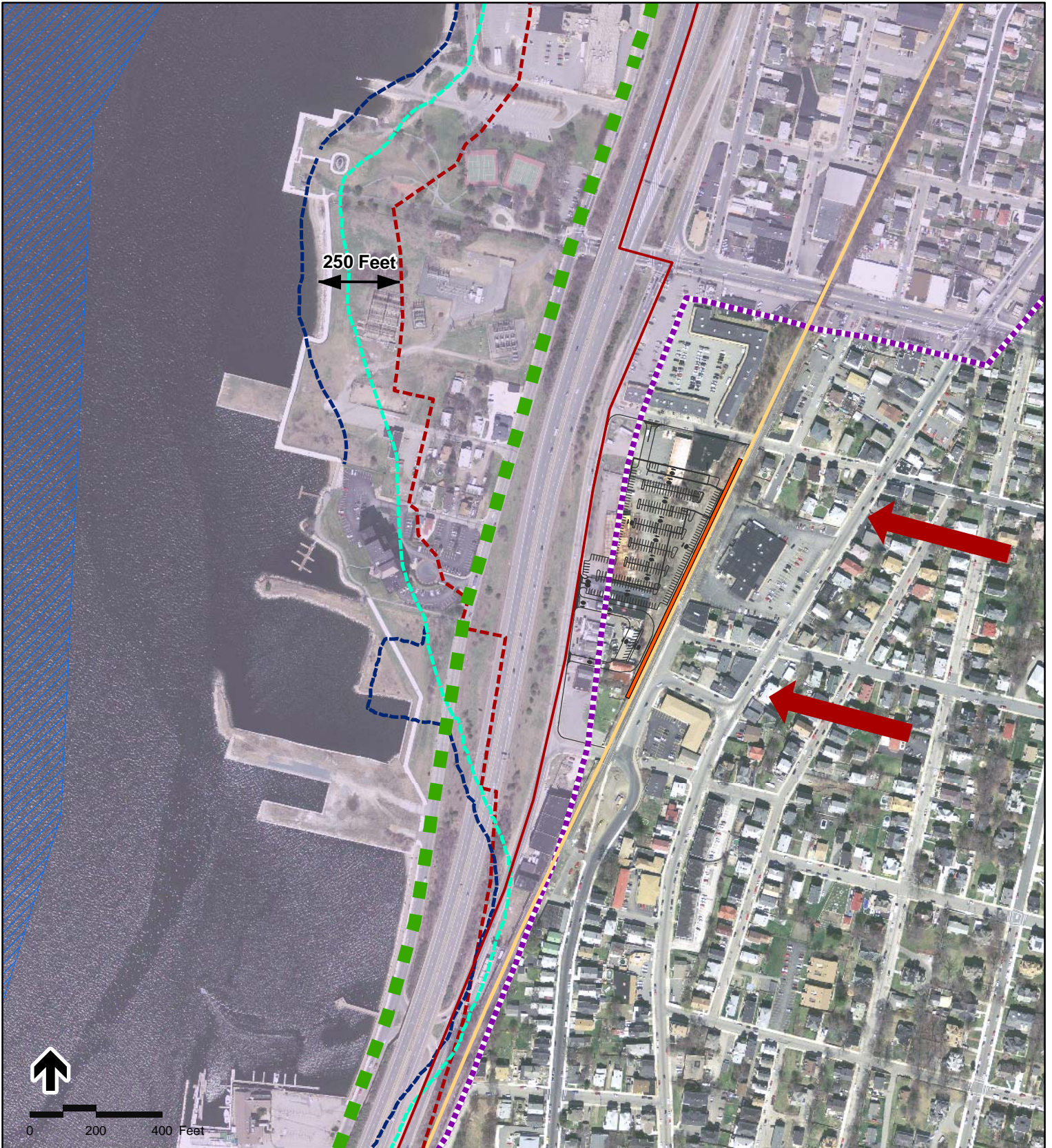


**Legend**

- Proposed Layover Building
- Proposed Layover Facility
- Proposed Alternative
- Contemporary High Water
- Historic High Water
- Historic Low Water
- Inferred Historic Shoreline
- 250 Foot Offset from Mean High Water
- First Intervening Public Way
- Mount Hope Bay Designated Port Area
- The Massachusetts Coastal Zone
- Waterfront Views

Figure 4.18-16  
Coastal Zone and Chapter 91 Jurisdiction  
Weaver's Cove East Layover Facility

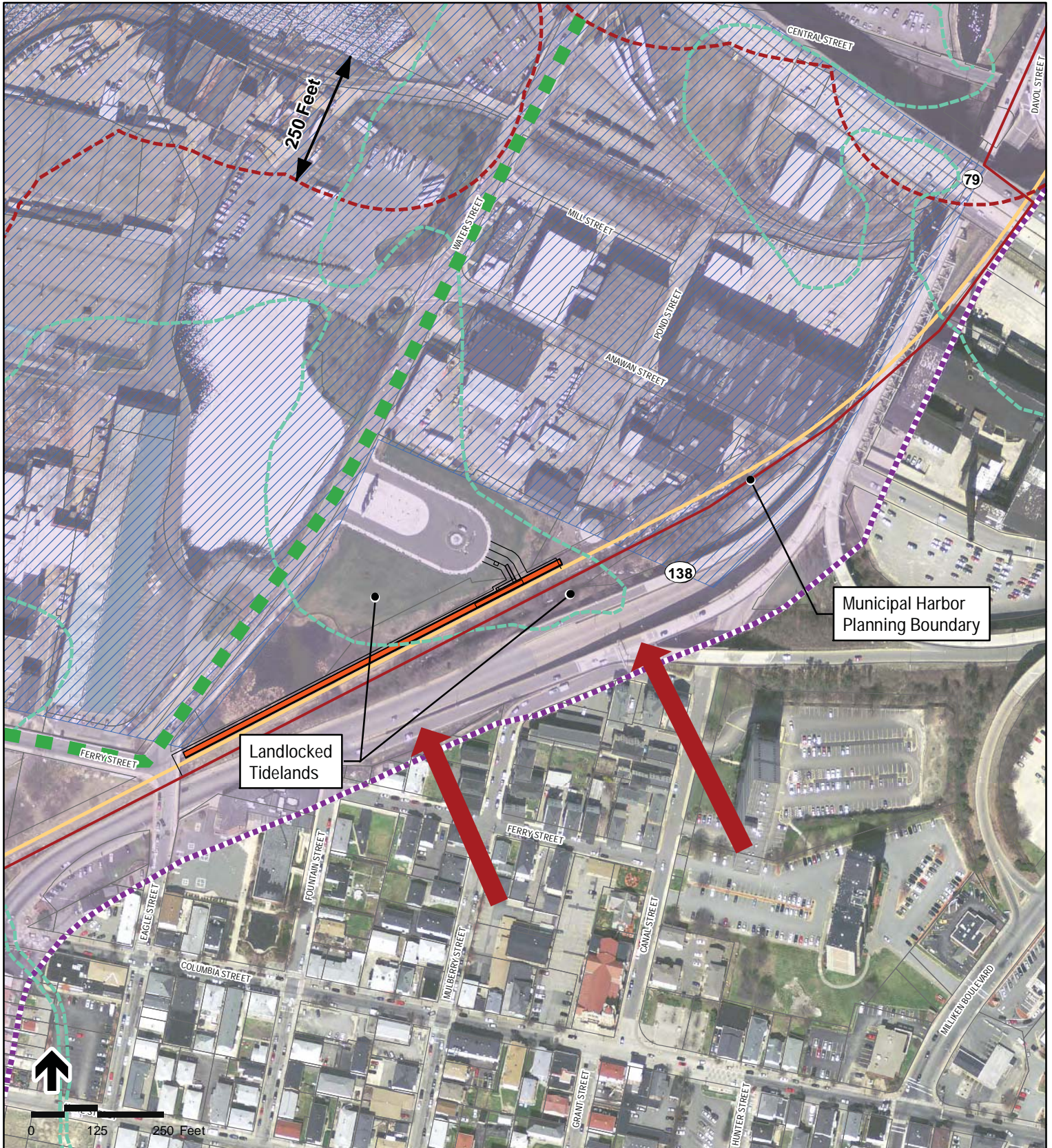




**Legend**

- Proposed Platform
- Proposed Alternative
- Contemporary High Water
- Historic High Water
- Historic Low Water
- Inferred Historic Shoreline
- 250 Foot Offset from Mean High Water
- First Intervening Public Way
- Mount Hope Bay Designated Port Area
- The Massachusetts Coastal Zone
- Waterfront Views

Figure 4.18-17  
Coastal Zone and Chapter 91  
Jurisdiction Fall River  
Depot Station



**Legend**

- Proposed Platform
- Proposed Alternative
- Contemporary High Water
- Historic High Water
- Historic Low Water
- Inferred Historic Shoreline
- 250 Foot Offset from Mean High Water
- First Intervening Public Way
- Mount Hope Bay Designated Port Area
- The Massachusetts Coastal Zone
- Waterfront Views

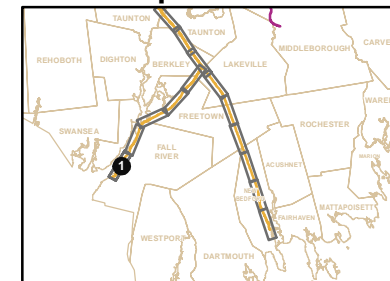
Figure 4.18-18  
Coastal Zone and Chapter 91 Jurisdiction  
Battleship Cove Station



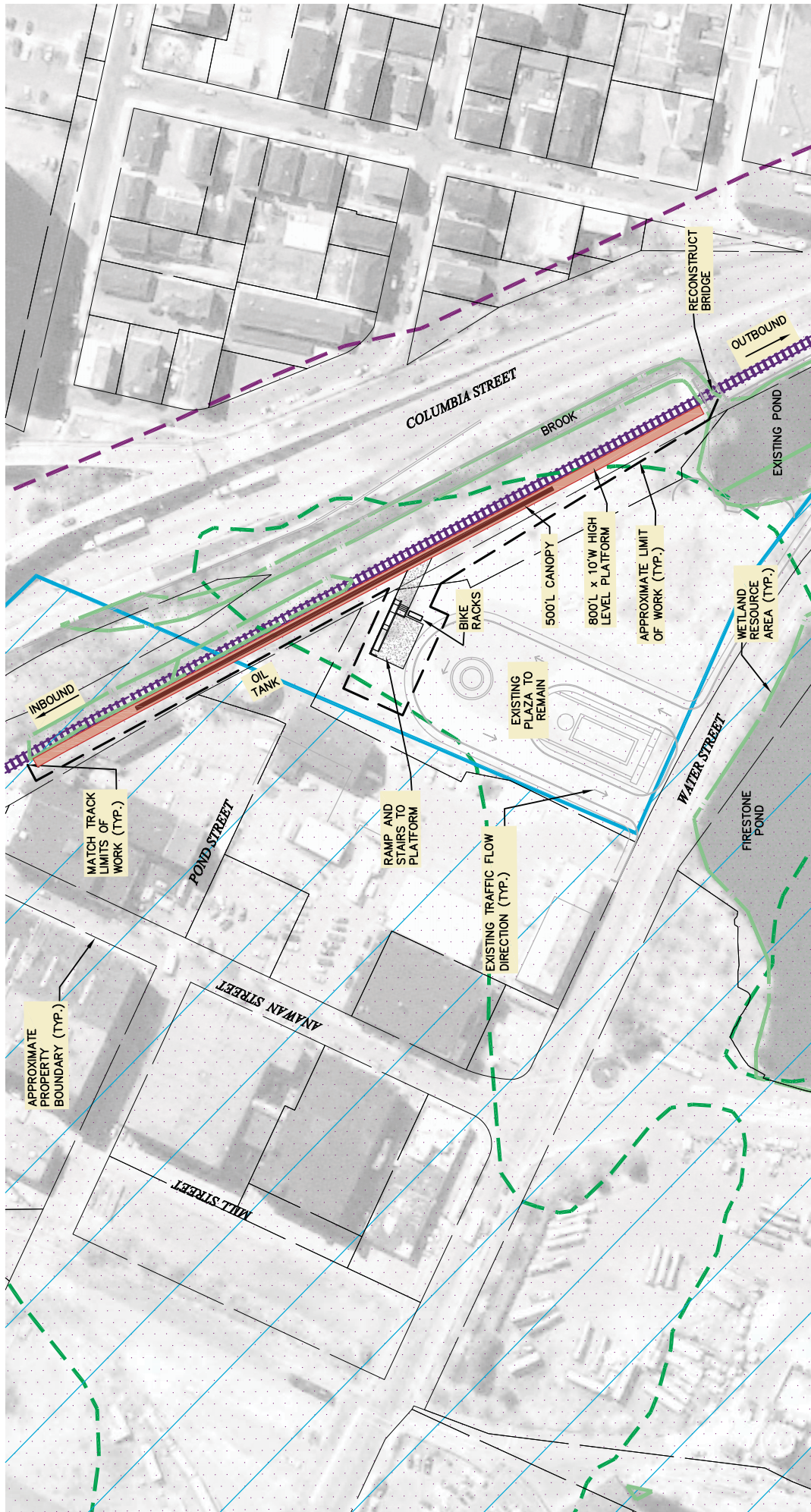
Printing Date: 3/15/2013  
 File: \\MABOS\projects\10111.00\GIS\project\FEIS\CZM\_Chap01\FallRiver\_Page3.mxd

- Legend**
- MBTA Commuter Rail Station
  - MBTA Commuter Rail
  - Town Boundaries
  - Proposed Stations
  - Limit of Disturbance (LOD)
  - South Coast Rail
  - Proposed Station Platform
  - Traction Power Station
  - Contemporary High Water
  - Historic High Water
  - Historic Low Water
  - Inferred Historic Shoreline
  - Project Element in Filled Tideland
  - The Massachusetts Coastal Zone
  - Mt. Hope Bay Designated Port Area
  - Bridge
  - Bridge - 91 Jurisdiction
  - Culvert
  - Culvert - 91 Jurisdiction

**Index Map**



**Figure 4.18-19**  
**Coastal Zone Management**  
**Fall River Secondary**

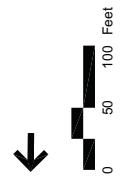


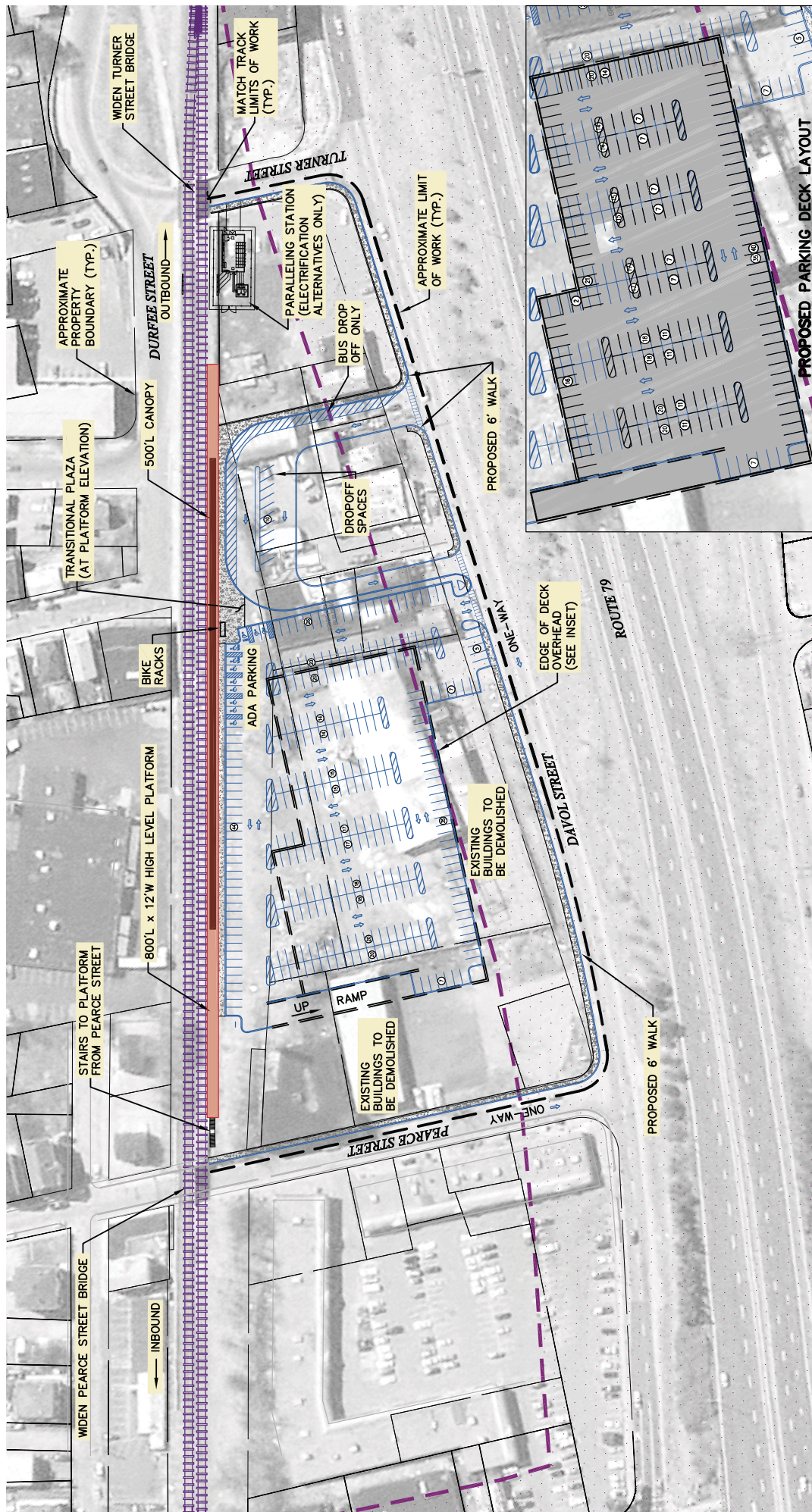
**Figure 4.18-20**  
**Conceptual Layout of**  
**Battleship Cove Station**

- Legend**
- Platform
  - Canopy
  - Transitional Plaza
  - Proposed Track
  - Existing Track
  - Wetland
  - Retaining Wall
- Property
  - Proposed Roadway
  - Limit of Work
  - The Massachusetts Coastal Zone
  - Mount Hope Bay Designated Port Area
  - Historic High Water

**Parking Summary Chart**

STANDARD SPACES	0
ACCESSIBLE SPACES	0
DROPOFF SPACES	0
TOTAL SPACES	0





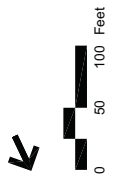
**Parking Summary Chart**

STANDARD SPACES	502
ACCESSIBLE SPACES	11
DROPOFF SPACES	10
TOTAL SPACES	523

**Legend**

- Platform
- Canopy
- Transitional Plaza
- Proposed Track
- Existing Track
- Wetland
- Retaining Wall
- Property
- Proposed Roadway
- Limit of Work
- The Massachusetts Coastal Zone

**Figure 4.18-21**  
**Conceptual Layout of**  
**Fall River Depot Station**



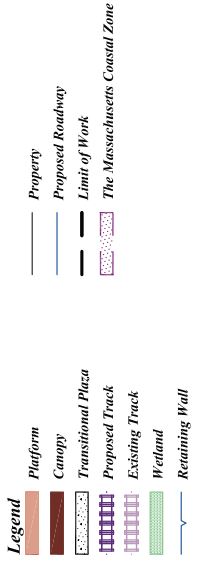
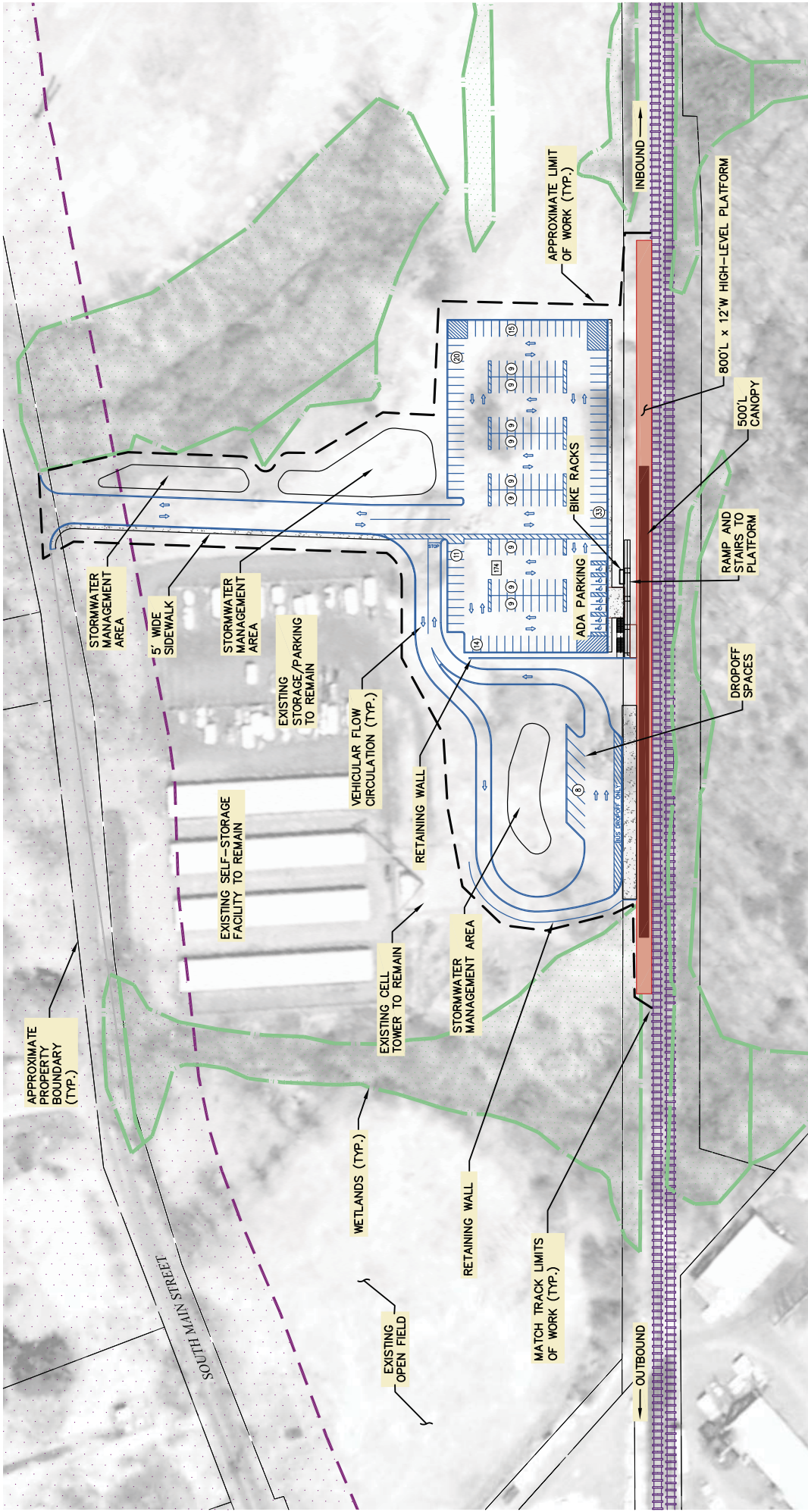
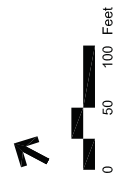
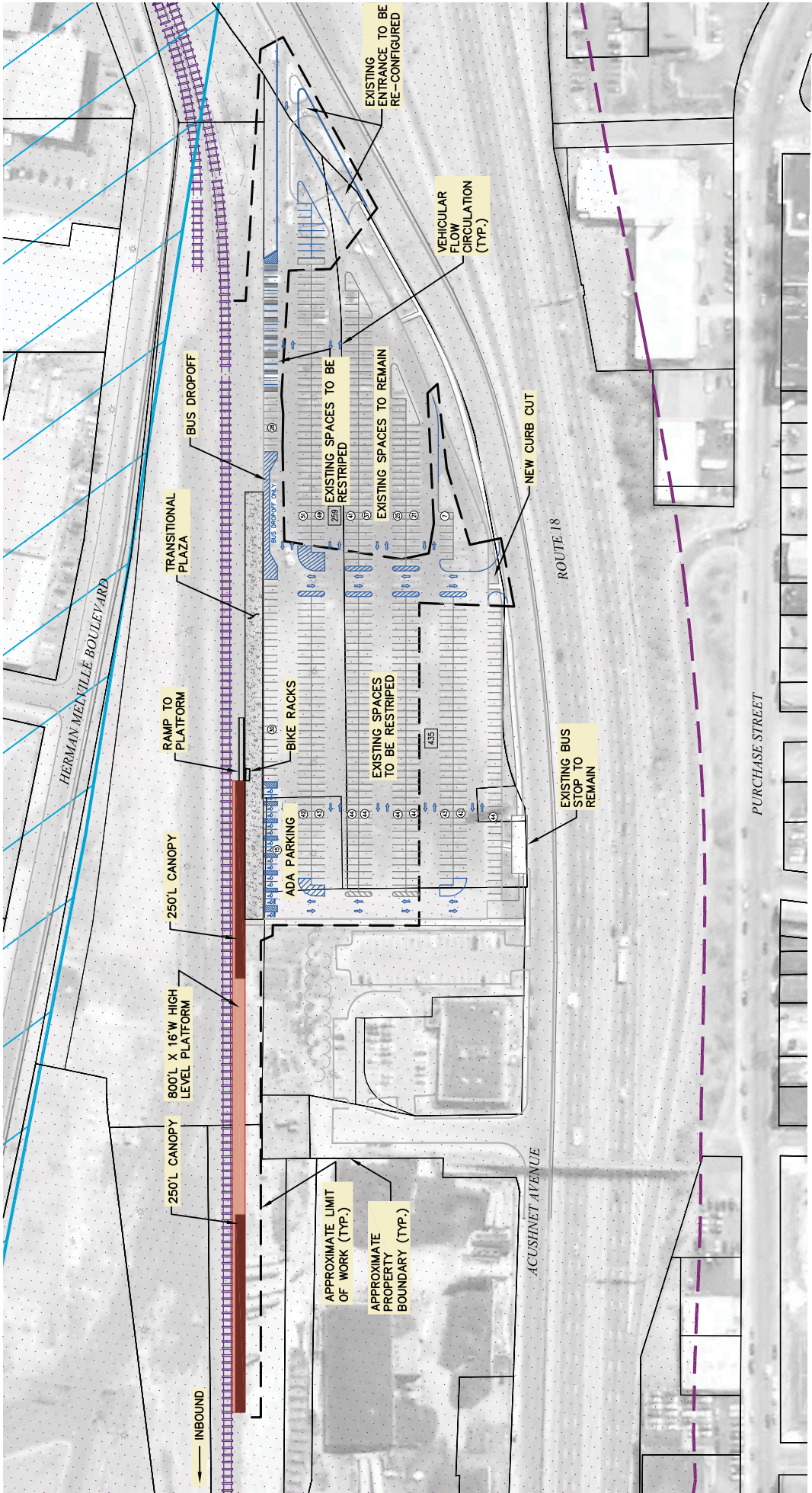


Figure 4.18-22  
Conceptual Layout of  
Freetown Station

**Parking Summary Chart**

STANDARD SPACES	167
ACCESSIBLE SPACES	7
DROPOFF SPACES	8
TOTAL SPACES	182





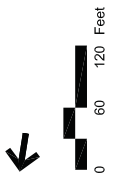
Parking Summary Chart

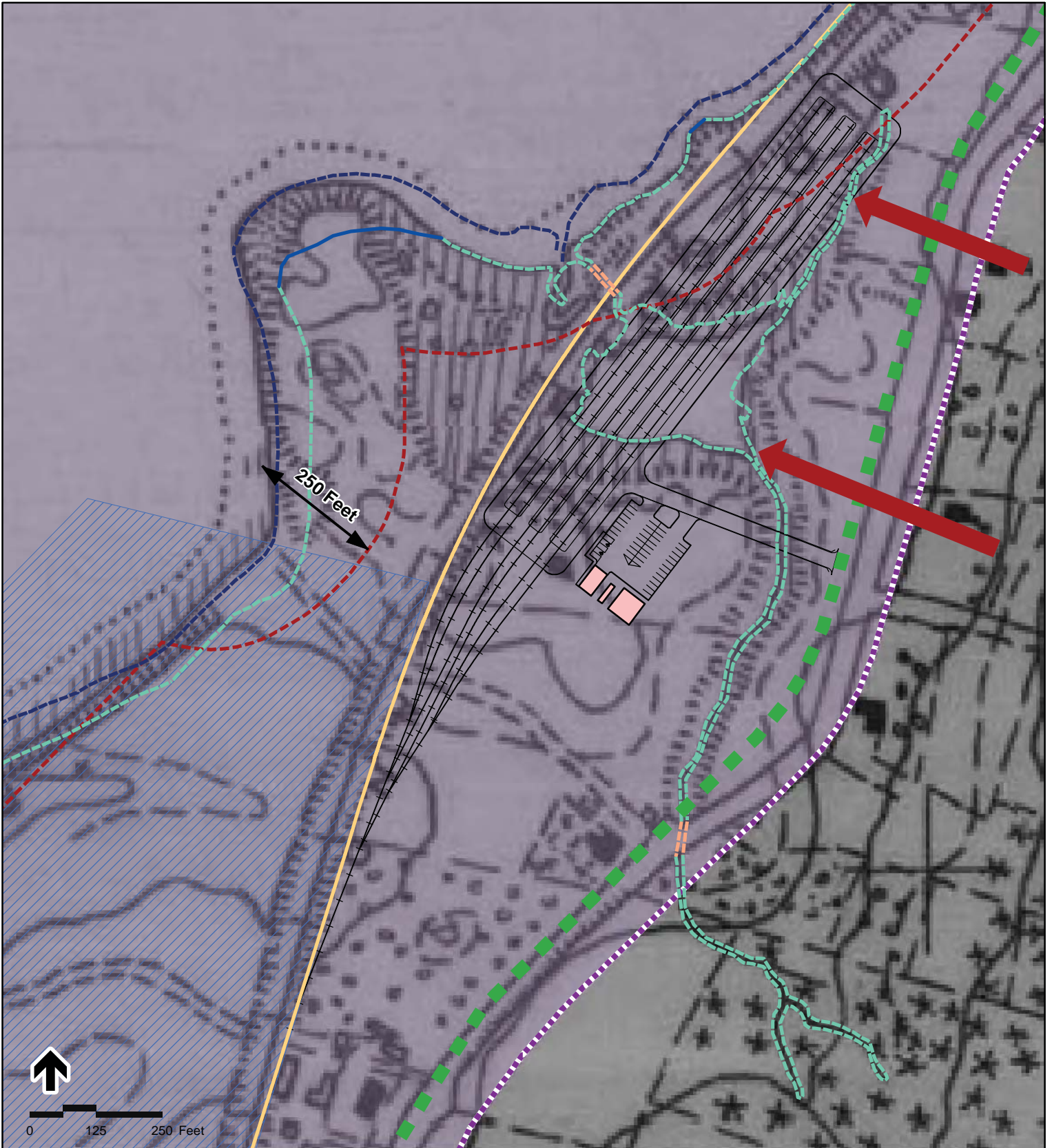
STANDARD SPACES	679
ACCESSIBLE SPACES	15
DROPOFF SPACES	0
TOTAL SPACES	694

**Legend**

- Platform
- Canopy
- Transitional Plaza
- Proposed Track
- Existing Track
- Wetland
- Retaining Wall
- Property
- Proposed Roadway
- Limit of Work
- The Massachusetts Coastal Zone
- Mount Hope Bay Designated Port Area

Figure 4.18-23  
 Conceptual Layout of  
 Whale's Tooth Station



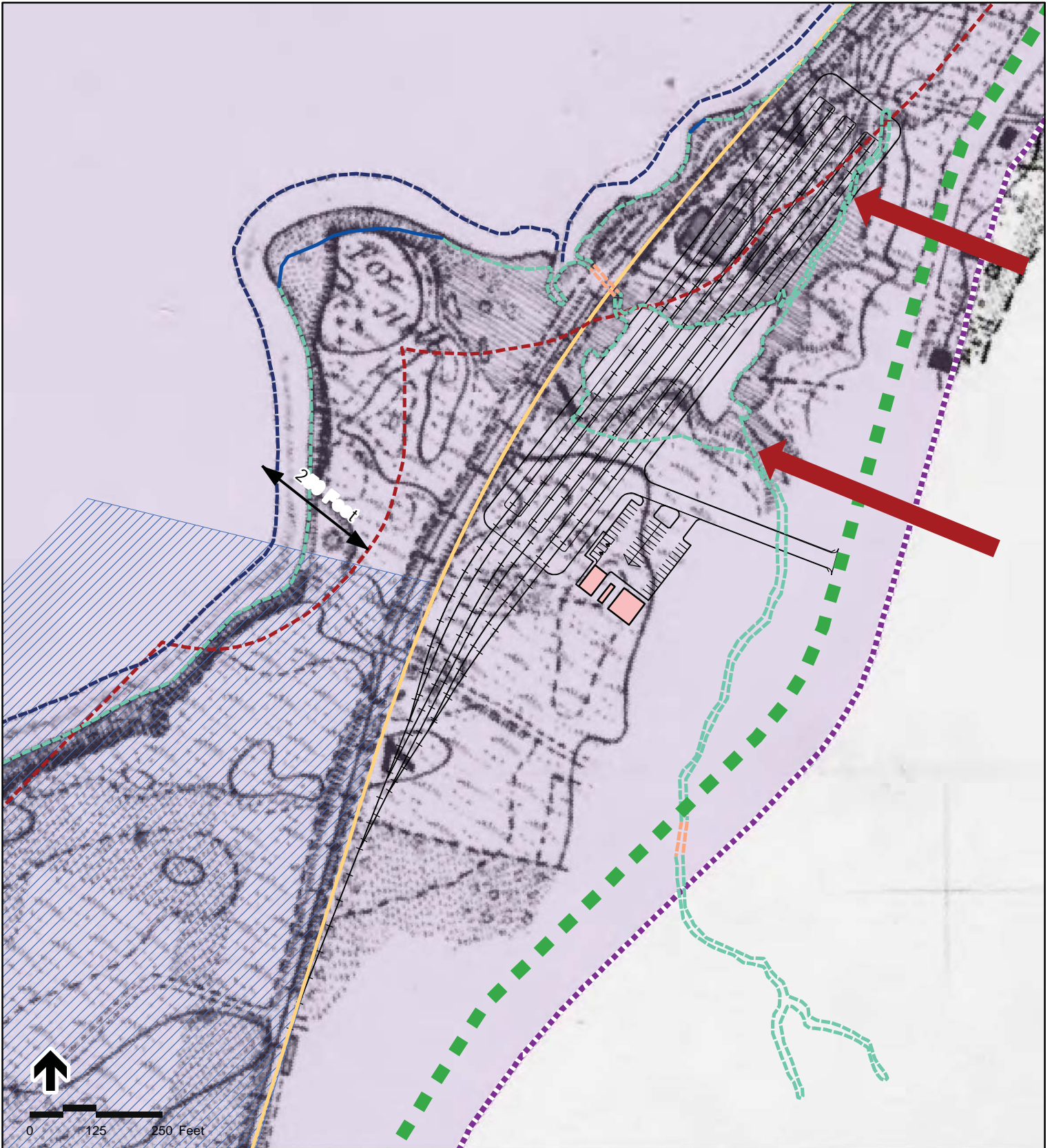


**Legend**

- Proposed Layover Building
- Proposed Layover Facility
- Proposed Alternative
- Contemporary High Water
- Historic High Water
- Historic Low Water
- Inferred Historic Shoreline
- 250 Foot Offset from Mean High Water
- First Intervening Public Way
- Mount Hope Bay Designated Port Area
- The Massachusetts Coastal Zone
- Waterfront Views

Figure 4.18-24
Weaver's Cove East Layover Facility
1865 Historic Shoreline





- Proposed Layover Building
- Proposed Layover Facility
- Proposed Alternative
- Contemporary High Water
- Historic High Water
- Historic Low Water
- Inferred Historic Shoreline
- 250 Foot Offset from Mean High Water
- First Intervening Public Way
- Mount Hope Bay Designated Port Area
- The Massachusetts Coastal Zone
- Waterfront Views

Figure 4.18-25
Weaver's Cove East Layover Facility
1744 Historic Shoreline