



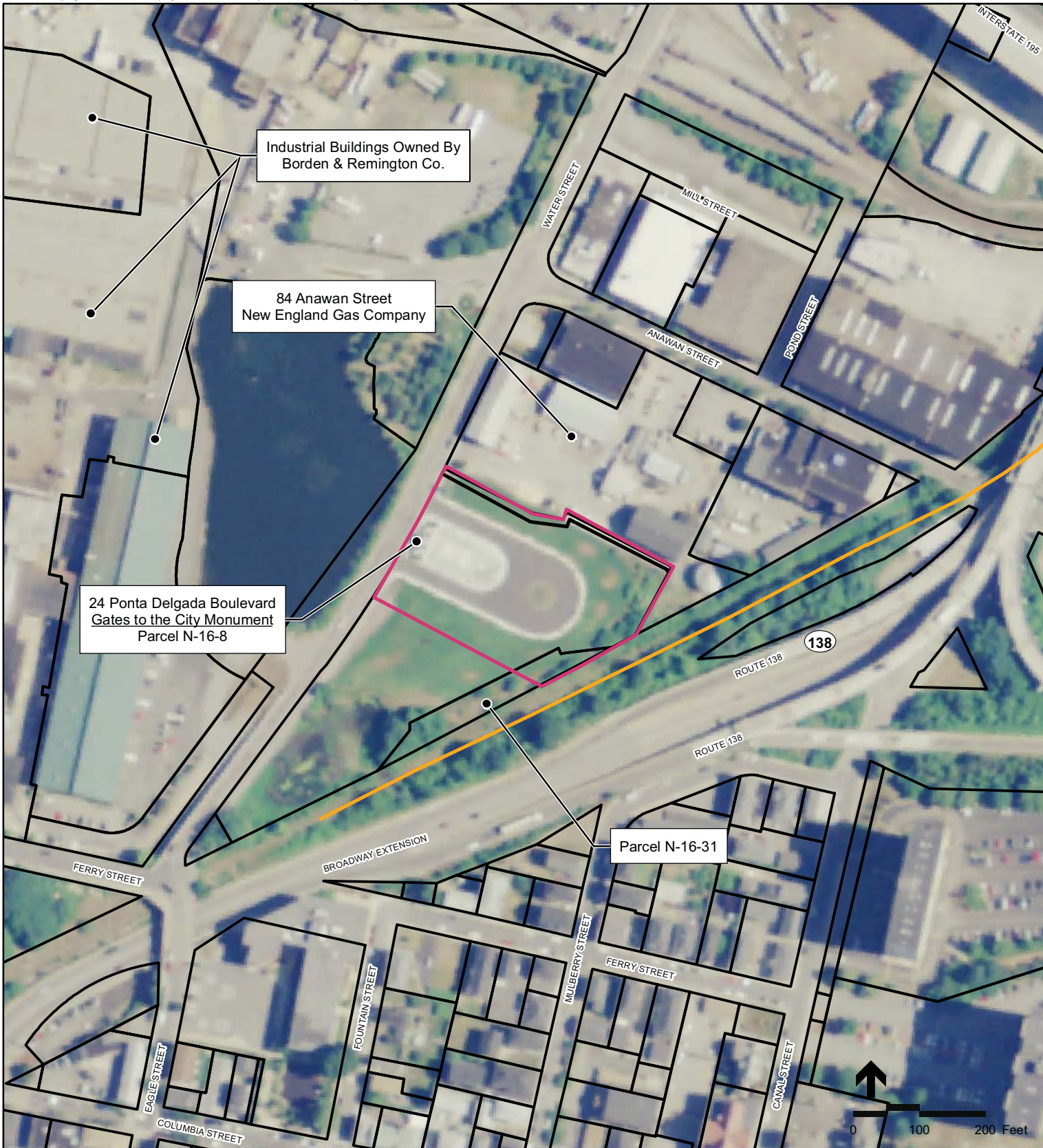
Legend

- Segments
- Proposed Alternative
- Proposed Location Site

Figure 4.12-1

Site Plan - Whittenton Branch

Wednesday, February 4, 2009, 10:47:04 AM
 Z:\6295-VHBM\MAP DOCUMENTS\Kingshighway\Kings Hwy Site Plan Map_VHBTmp.mxd



Legend




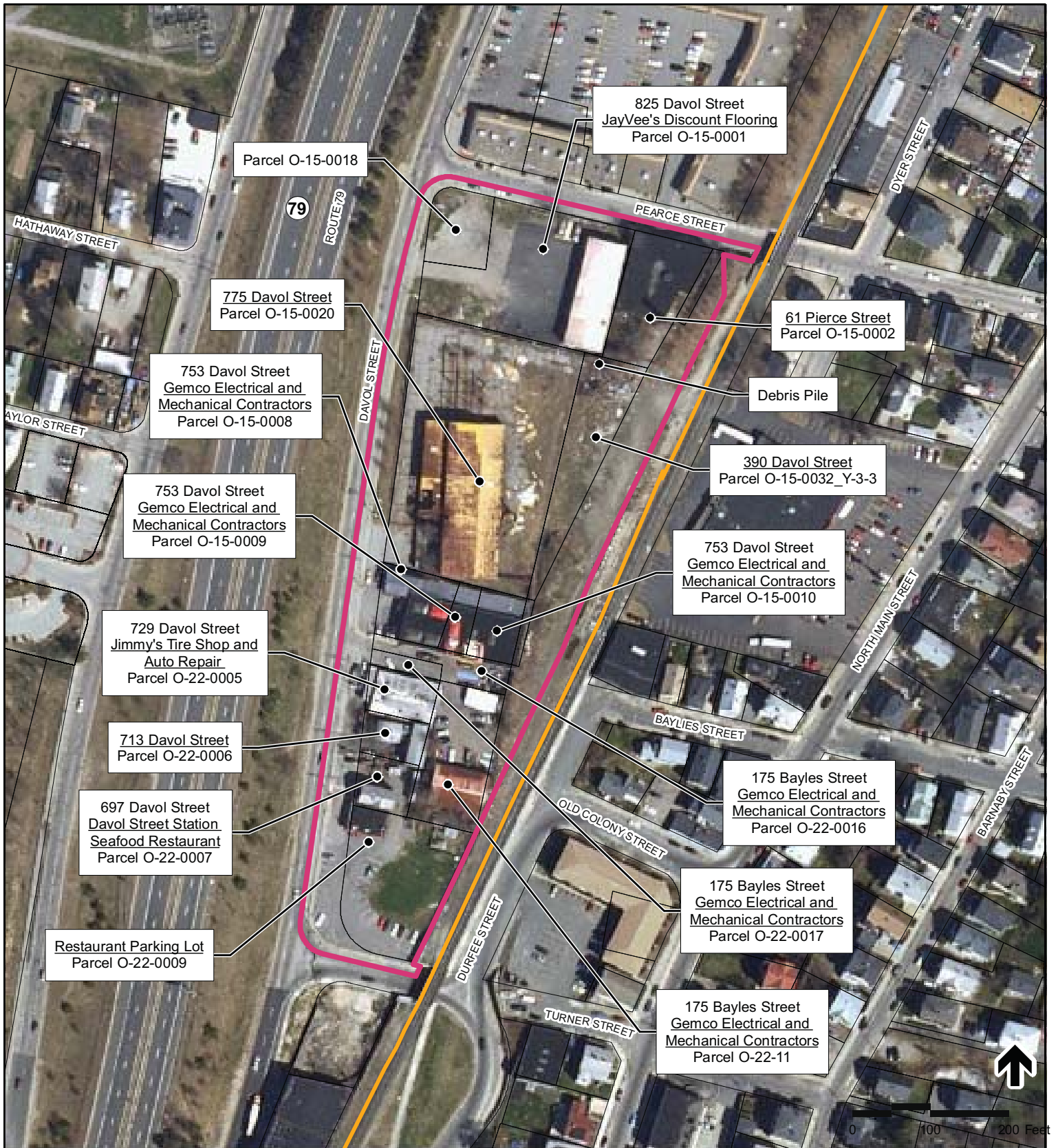
-  Proposed Alternative
-  Proposed Station Site
-  Parcel Boundary

Figure 4.12-2
Site Plan - Battleship Cove Station



- Legend**
- Proposed Alternative
 - Proposed Station Site
 - Parcel Boundary

Figure 4.12-3
 Site Plan - Fall River Depot Station

Wednesday, February 4, 2009 2:17:32 PM
Z:\9295-VHB\MAP DOCUMENTS\Raynham\Raynham Site Plan Map_VHBTemp.mxd



Legend

- Proposed Alternative
- Proposed Station Site

Figure 4.12-4
Site Plan - Freetown Station



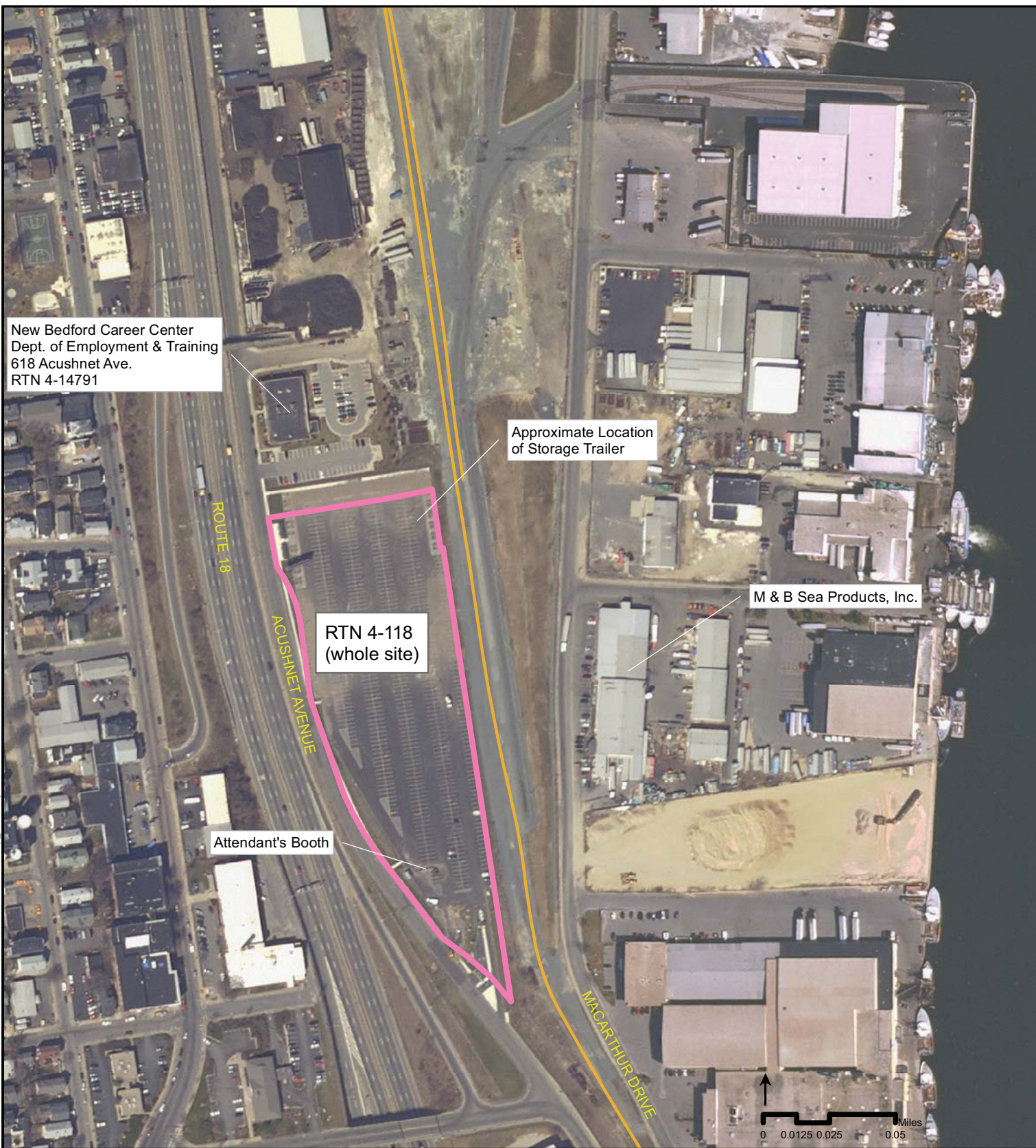
Wednesday, February 4, 2009 2:17:32 PM
 Z:\6295-VHB\MAP DOCUMENTS\Raynham\Raynham Site Plan Map_VHB\temp.mxd

Legend

- Proposed Alternative
- Limit of Work of Proposed Station

Figure 4.12-5
 Site Plan - King's Highway Station

Wednesday, February 4, 2009 1:38:45 PM
Z:\8295-VH\MAP DOCUMENTS\Whales\tooth\Whales Tooth Site Plan Map_VHBTmp.mxd



New Bedford Career Center
Dept. of Employment & Training
618 Acushnet Ave.
RTN 4-14791

Approximate Location
of Storage Trailer

M & B Sea Products, Inc.

RTN 4-118
(whole site)

Attendant's Booth



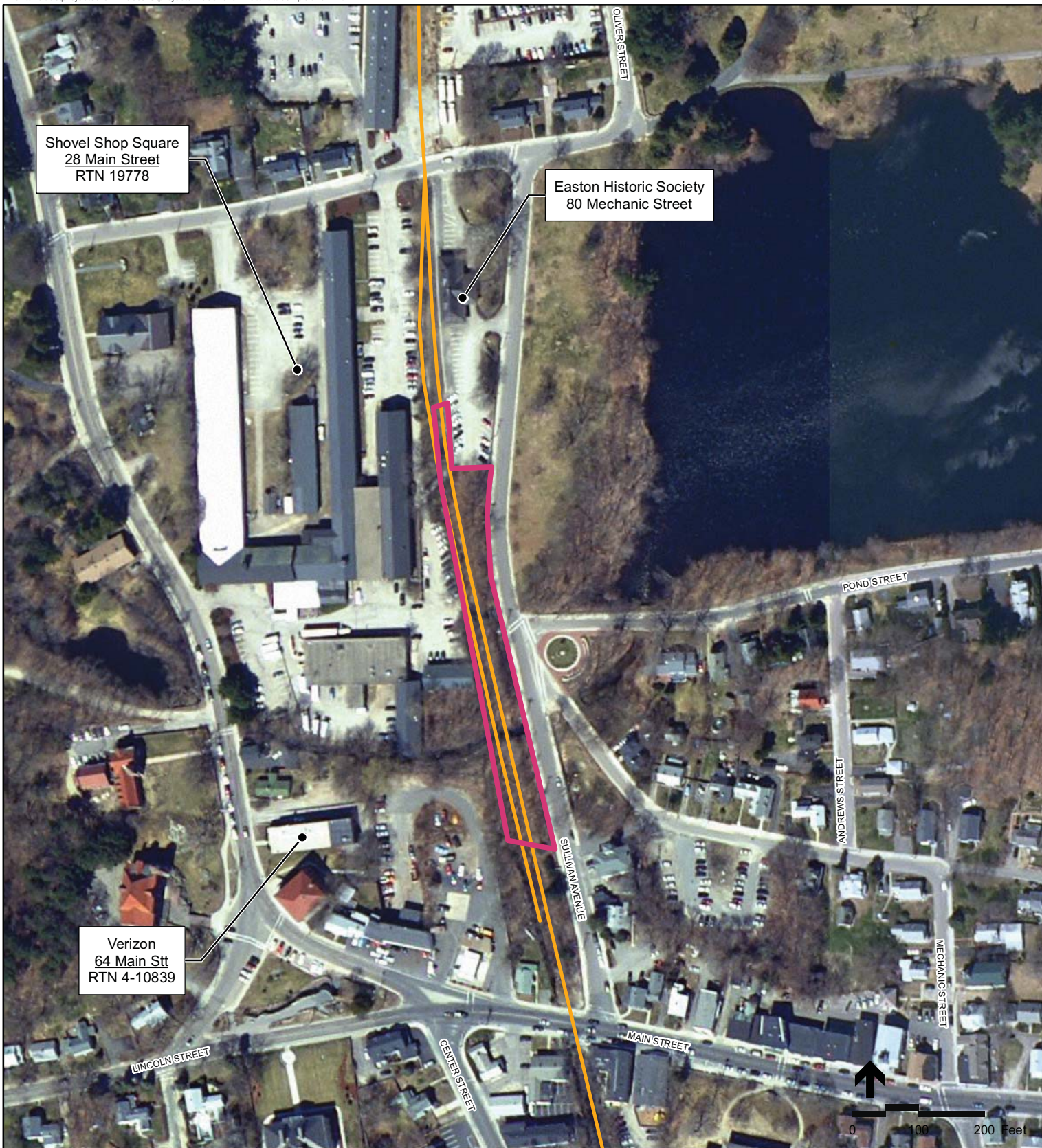
- Legend**
- Site Location
 - Proposed Alternative

Figure 4.12-6
Site Plan - Whale's Tooth Station



- Legend**
- Proposed Station Site
 - Proposed Alternative
 - Parcel Boundary

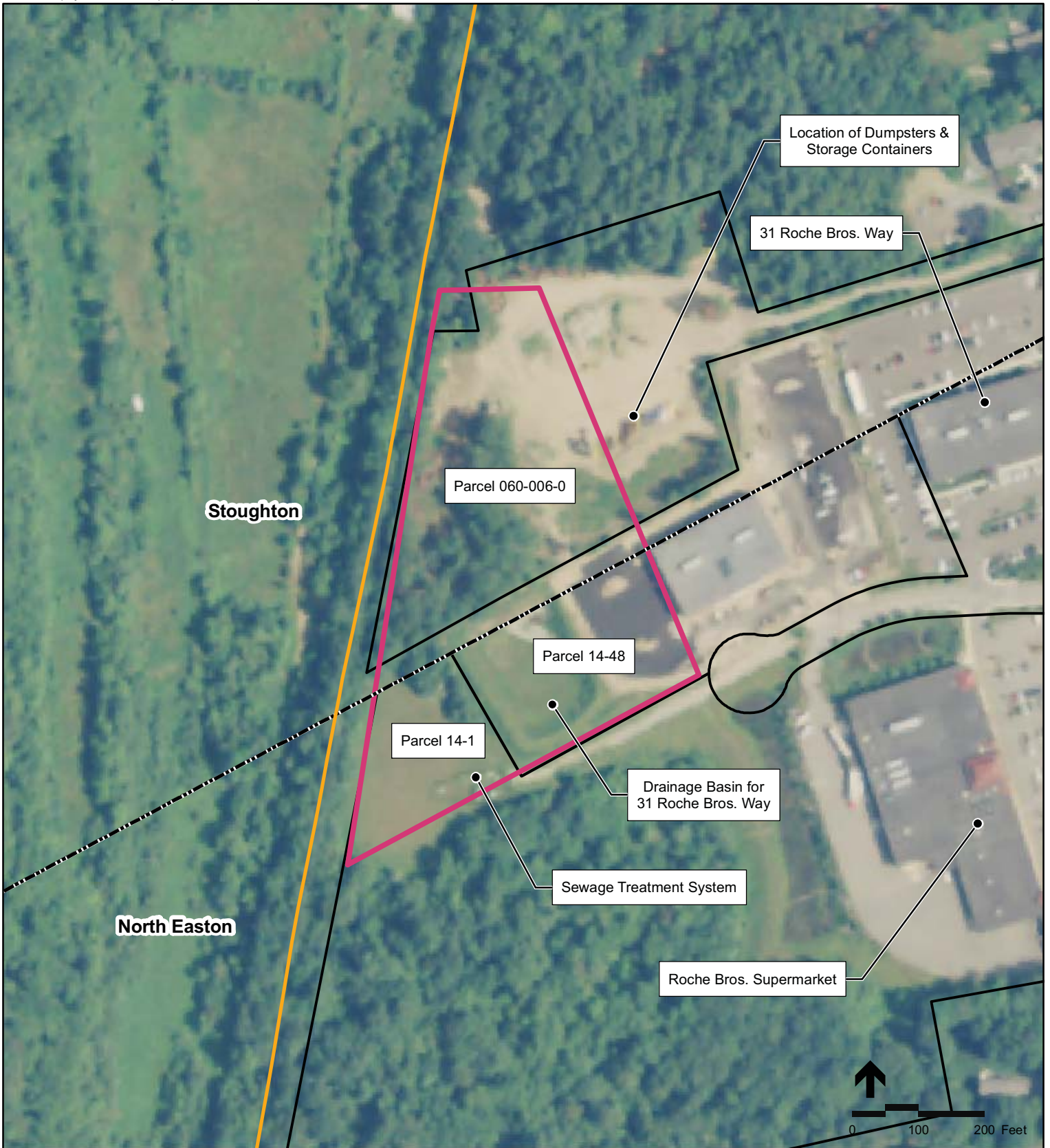
Figure 4.12-7
Site Plan - Taunton Depot Station



Legend

- Proposed Alternative
- ▭ Proposed Station Site

Figure 4.12-8
Site Plan - Easton Village Station



- Legend**
- Proposed Alternative
 - Town Boundaries
 - Proposed Station Site
 - Parcel Boundary

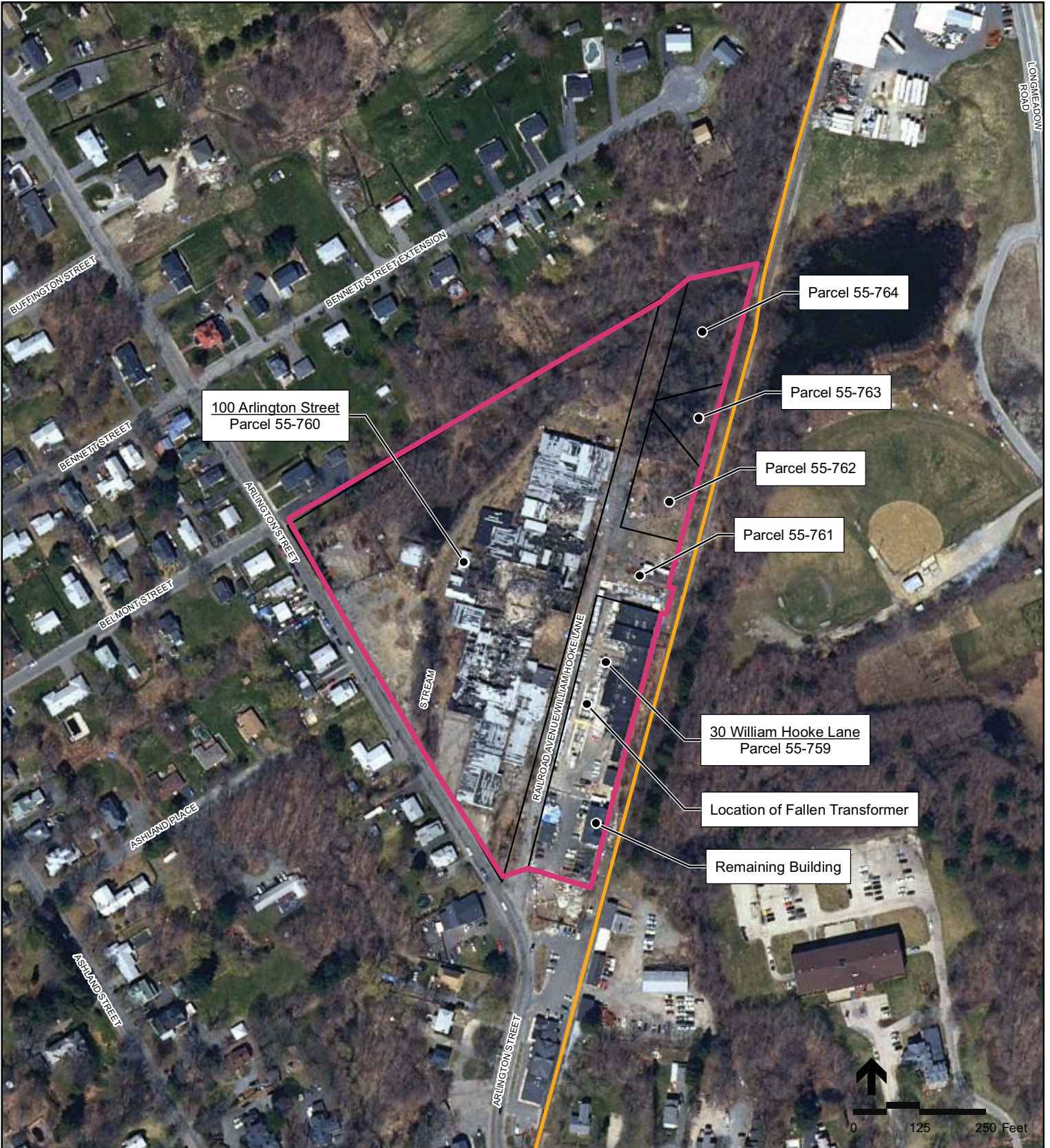
Figure 4.12-9
Site Plan - North Easton Station

Wednesday, February 4, 2009 2:17:32 PM
Z:\6295-VHB\MAP DOCUMENTS\Raynham\Raynham Site Plan Map_VHB Temp.mxd



Figure 4.12-10
Site Plan - Raynham Place Station

- Legend**
- Proposed Alternative
 - Proposed Station Site



Legend




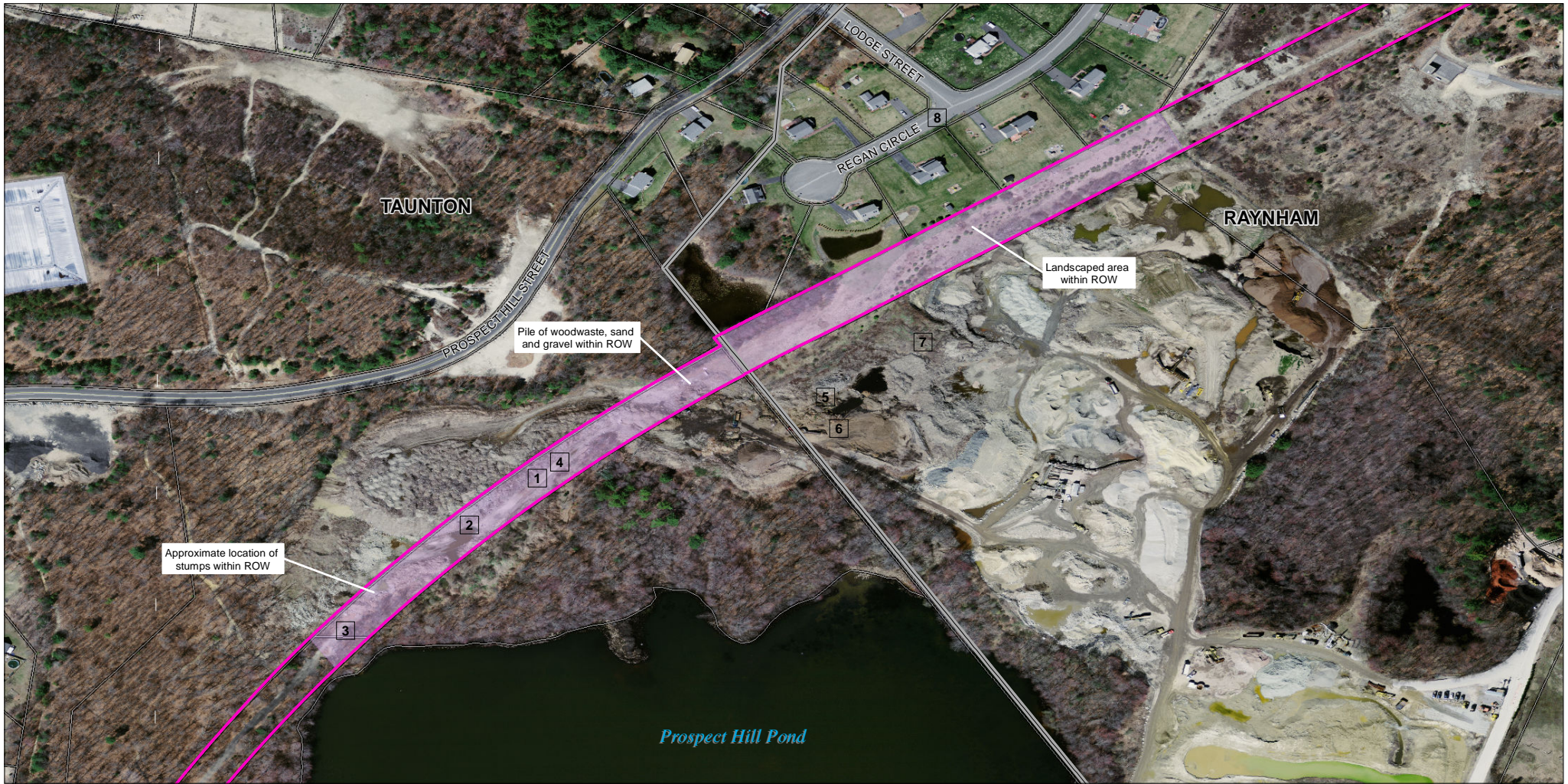
-  Proposed Alternative
-  Proposed Station Site
-  Parcel Boundary

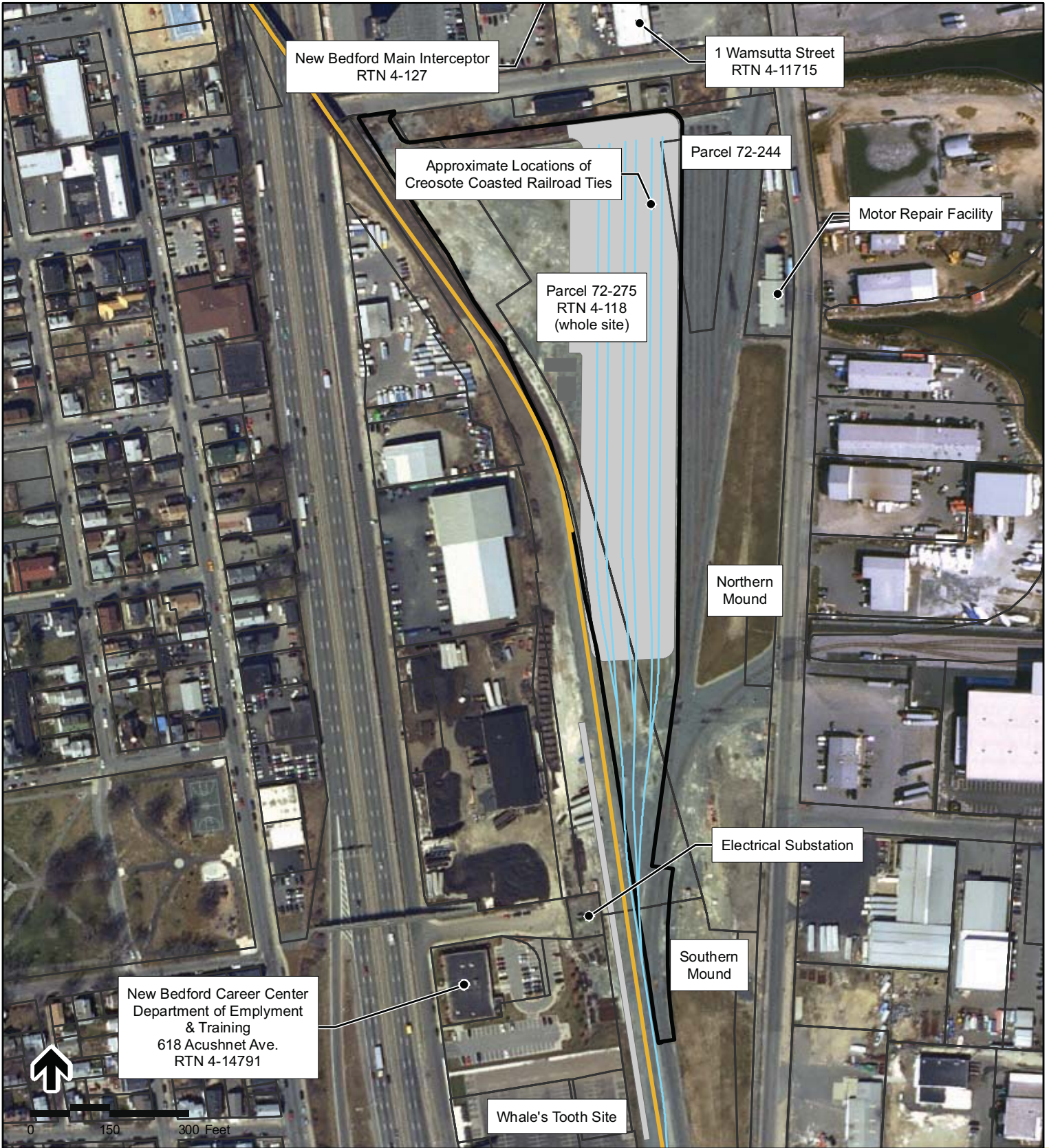
Figure 4.12-11
Site Plan - Taunton Station



- Legend**
- Railroad Right-of-Way (ROW)
 - Altered Portion of ROW
 - Assessor's Parcels
 - Town Boundary
 - 6 Photograph Location (Approximate)

Figure 4.12-12

Railroad Right-of-Way
Raynham and Taunton



- Legend**
- Track Centerline
 - Proposed Alternative
 - Limit of Permanent Impact for Proposed Layover Facility
 - Proposed Pavement
 - Proposed Building
 - Parcel Boundary

Figure 4.12-14
Site Plan - Wamsutta Layover Site








- Legend**
-  Proposed Alternative
 -  Proposed Building
 -  Proposed Edge of Pavement
 -  Limit of Permanent Impact for Proposed Layover Facility
 -  Parcel Boundary

Figure 4.12-15
Site Plan - Weaver's Cove East Layover Site