

Legend

- | | |
|------------------------------------|----------------------------------|
| Proposed Alternative | Areas of Prime Farmland Soils |
| Limit of Work for Proposed Station | Farmland of Statewide Importance |
| Impacted Farmland Soils | Farmland of Unique Importance |
| Parking Area | Not Prime Farmland |
| Platform | |
| Drainage Basin | |
- 305C** Map Unit Symbol

Figure 4.11-1

Freetown Station Site Farmland Soils



- Legend**
- | | |
|------------------------------------|----------------------------------|
| Proposed Alternative | Areas of Prime Farmland Soils |
| Limit of Work for Proposed Station | Farmland of Statewide Importance |
| Parking Area | Farmland of Unique Importance |
| Platform | Not Prime Farmland |
| Drainage Basin | Impacted Farmland Soils |
| | 305C Map Unit Symbol |

Figure 4.11-2

Taunton Depot Station Site Farmland Soils

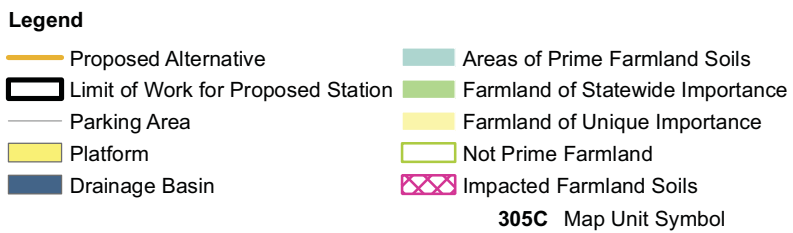


Figure 4.11-3

North Easton Station Site Farmland
Soils






- | | | | |
|--|----------------------------|---|----------------------------------|
|  | Proposed Station Locations |  | Areas of Prime Farmland Soils |
|  | Proposed Alternative |  | Farmland of statewide importance |
| | |  | Farmland of unique importance |
| | |  | Not Prime Farmland |

Figure 4.11-4

Dana Street Station Site
Farmland Soils

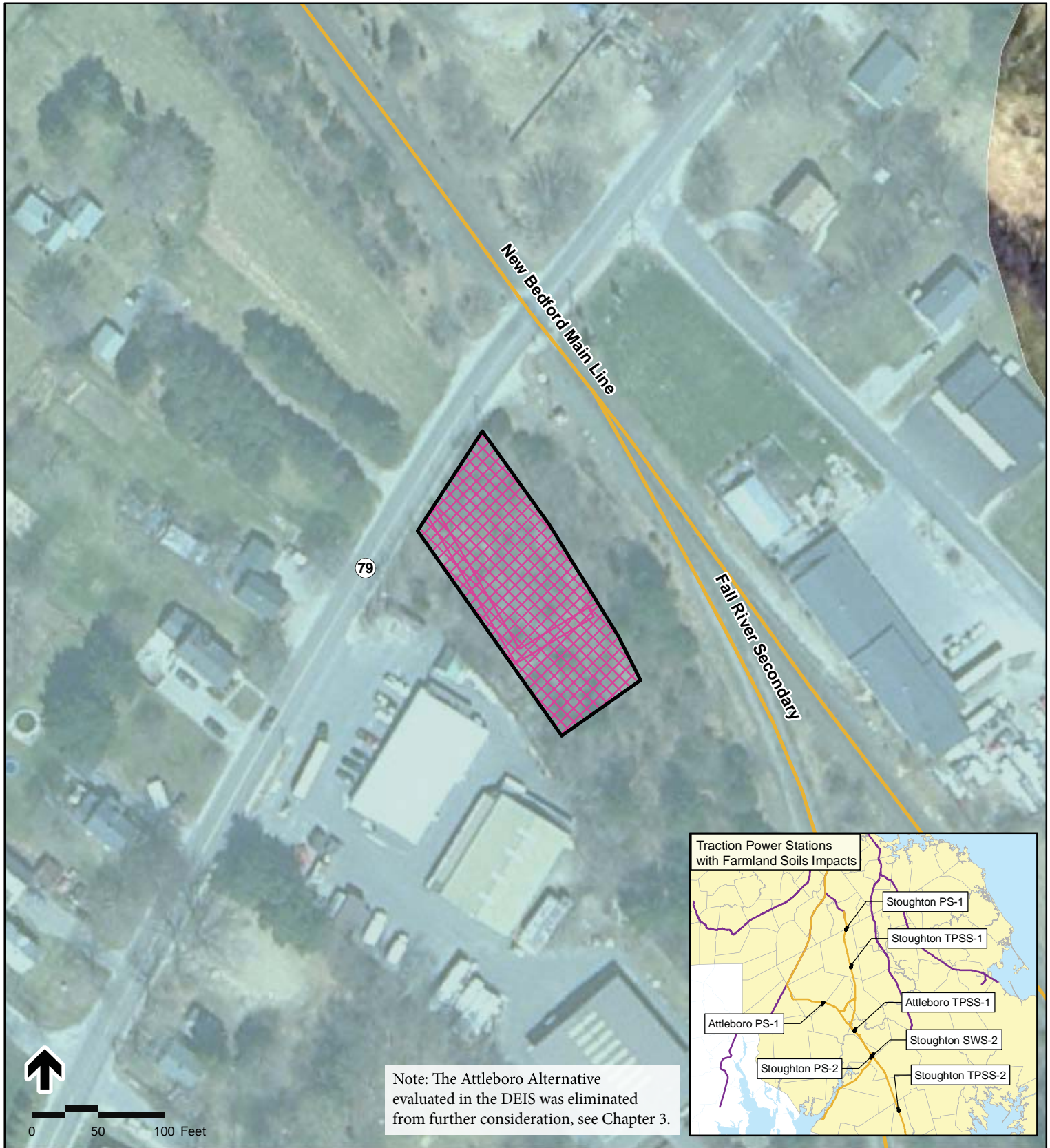


Legend

- Proposed Alternative
- Limit of Work for Traction Power Site
- Areas of Prime Farmland Soils
- Farmland of Statewide Importance
- Farmland of Unique Importance
- Not Prime Farmland
- Impacted Farmland Soil
- 305C Map Unit Symbol

Figure 4.11-5

Stoughton PS-1 Traction Power Station Farmland Soils

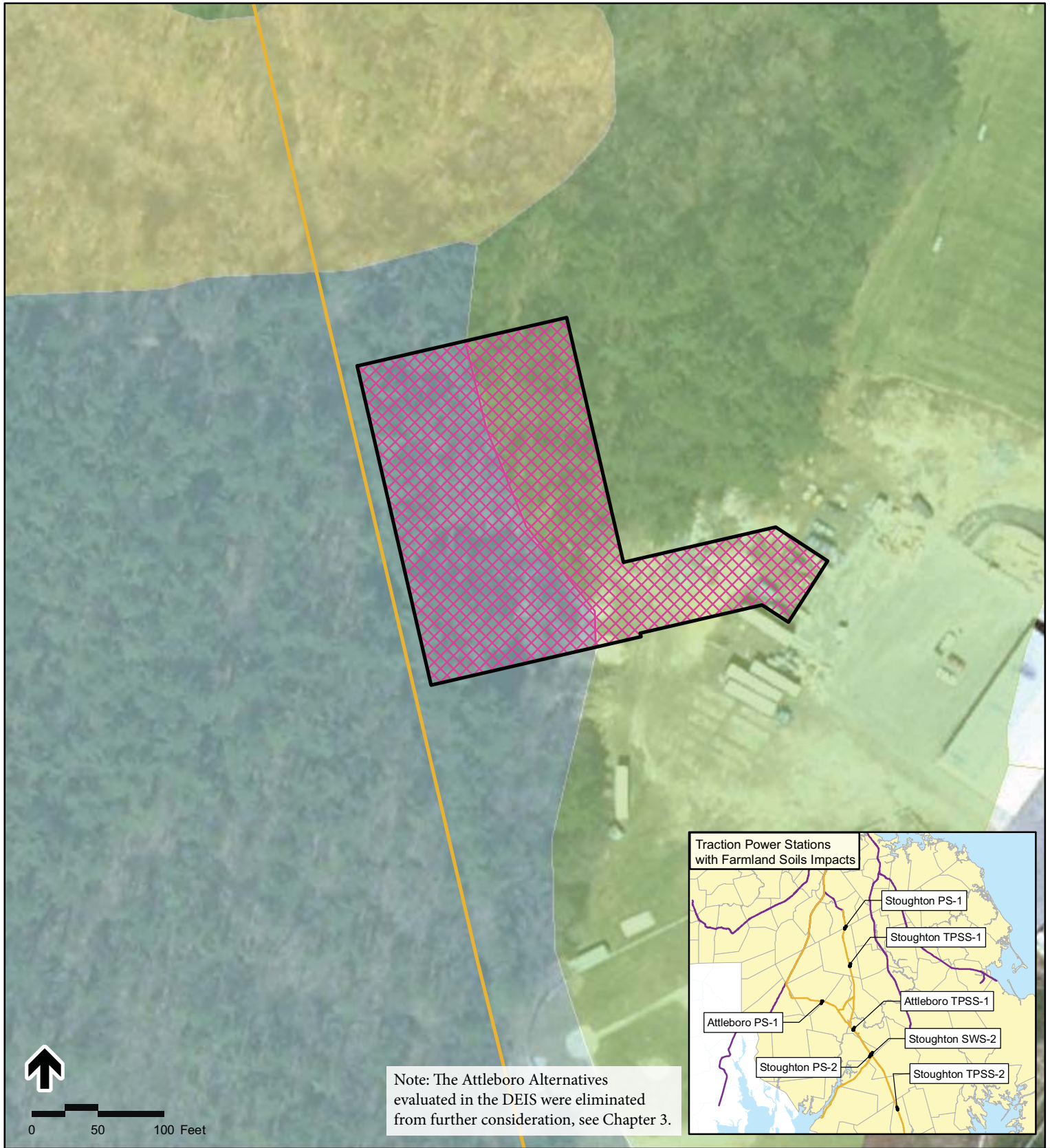


Legend

- Proposed Alternative
 - Limit of Work for Traction Power Site
 - Areas of Prime Farmland Soils
 - FarmLand of Statewide Importance
 - FarmLand of Unique Importance
 - Not Prime Farmland
 - Impacted Farmland Soil
- 305C Map Unit Symbol

Figure 4.11-6

Stoughton SWS-2 Traction Power
 Station Farmland Soils



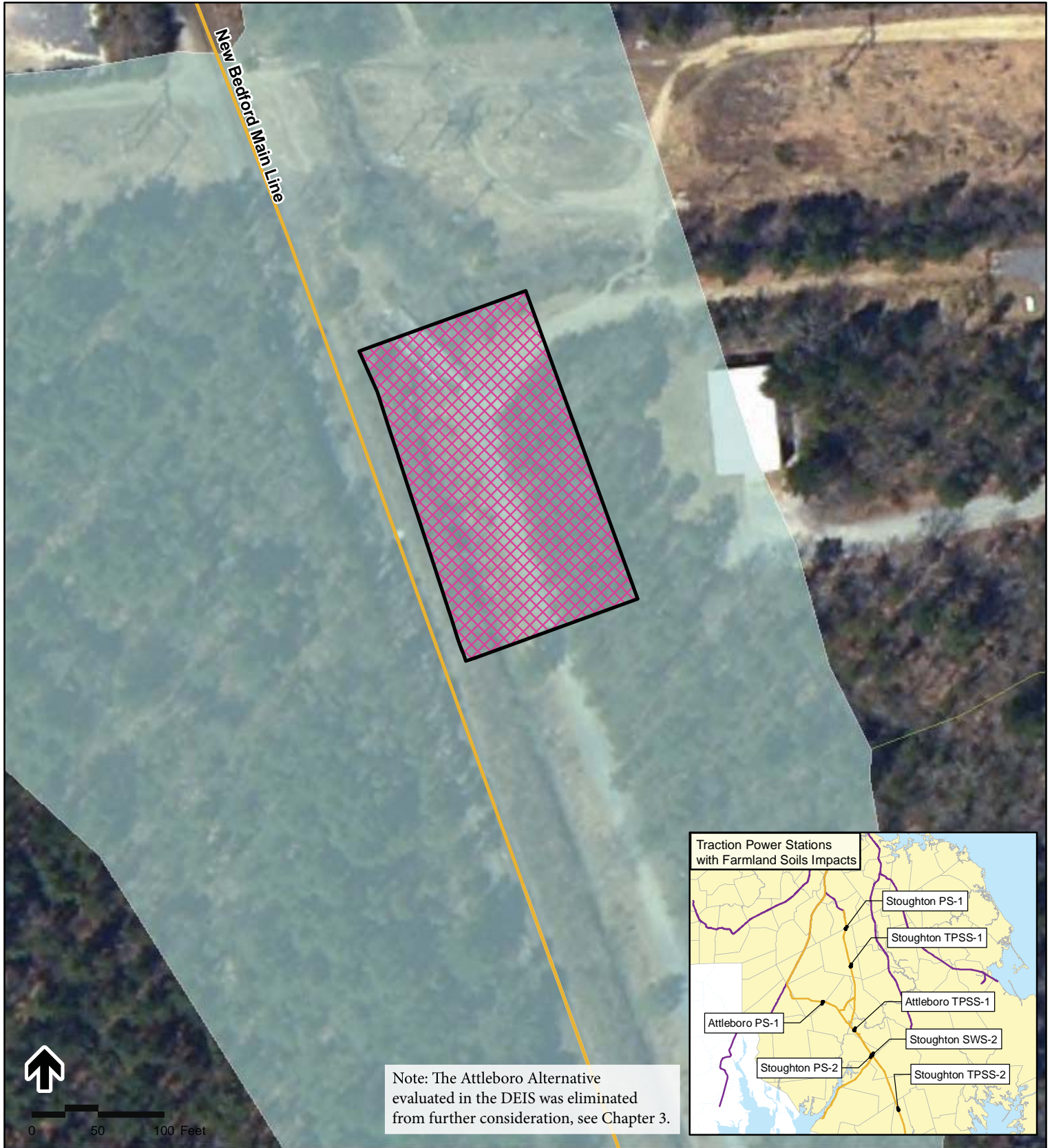
Legend

- Proposed Alternative
- Limit of Work for Traction Power Site
- Areas of Prime Farmland Soils
- Farmland of Statewide Importance
- Farmland of Unique Importance
- Not Prime Farmland
- Impacted Farmland Soil

305C Map Unit Symbol

Figure 4.11-7

Stoughton TPSS-1 Traction Power
 Station Farmland Soils



Legend

- Proposed Alternative
- ▭ Limit of Work for Traction Power Site
- ▭ Areas of Prime Farmland Soils
- ▭ Farmland of Statewide Importance
- ▭ Farmland of Unique Importance
- ▭ Not Prime Farmland
- ▭ Impacted Farmland Soil

305C Map Unit Symbol

Figure 4.11-8

Stoughton TPSS-2 Traction Power Station Farmland Soils