



**US Army Corps  
of Engineers**®  
New England District  
696 Virginia Road  
Concord, MA 01742-2751

# PUBLIC NOTICE

**Comment Period Begins: November 12, 2013**  
**Comment Period Ends: December 13, 2013**  
**File Number: NAE-2006-4108**  
**In Reply Refer To: Crystal Gardner**  
**Phone: (978) 318-8338**  
**E-mail: [crystal.i.gardner@usace.army.mil](mailto:crystal.i.gardner@usace.army.mil)**

The District Engineer has received a request to extend the expiration date of a permit issued October 17, 2007 and authorize an additional structure in navigable waters.

## APPLICANT

Fan Pier Development LLC, c/o The Fallon Company LLC, One Marina Park Drive, Boston, MA 02210

## ACTIVITY

A permit was issued October 17, 2007 to install structures and discharge fill material within the waters of the United States in conjunction with the redevelopment of the Fan Pier. The authorized work included the placement of fill material for reconstruction of the seawall along the Boston Harborwalk, the removal of a stone revetment to connect the Fan Pier Tidal Park to Boston Harbor, a floating wave attenuator, a touch and go dock, installation of fixed piers and floating docks, and the placement of fill associated with the substrate re-contouring within Fan Pier Cove. The work is show on the attached plans entitled, "FAN PIER DEVELOPMENT PROJECT" on 19 sheets dated 4/10/07.

Some of the authorized work has been completed. The permittee has now requested that the permit expiration date be extended to December 31, 2019 to allow sufficient time for the remaining authorized work to be completed. Authorization has also been requested for an additional 20 foot wide pier extending off the seawall at an approximately 30 degree angle. One side extends 36 feet 3 inches seaward of the mean high water line at the seawall and the opposite side extends 78 feet 4.5 inches beyond the seawall. The work is shown on the attached plans entitled, "Fan Pier Development Project" on 5 sheets dated "10/24/2013".

## WATERWAY AND LOCATION OF THE PROPOSED WORK

This work site is in Boston Inner Harbor at 28-52 Northern Avenue, South Boston, MA. The site coordinates are: Latitude 42° 21' 14.4" Longitude 71° 02' 44.4".

## AUTHORITY

Permits are required pursuant to:

Section 10 of the Rivers and Harbors Act of 1899

Section 404 of the Clean Water Act

Section 103 of the Marine Protection, Research and Sanctuaries Act.

## OTHER APPROVALS

The States of Connecticut, Maine, Massachusetts, New Hampshire and Rhode Island have approved **Coastal Zone Management Programs**. Where applicable the applicant states that any proposed activity will comply with and will be conducted in a manner that is consistent with the approved Coastal Zone Management

**CENAE-R**  
**FILE NO. NAE-200x-xxx**

Program. By this Public Notice, we are requesting the State concurrence or objection to the applicant's consistency statement.

The following authorizations have been applied for, or have been, or will be obtained:

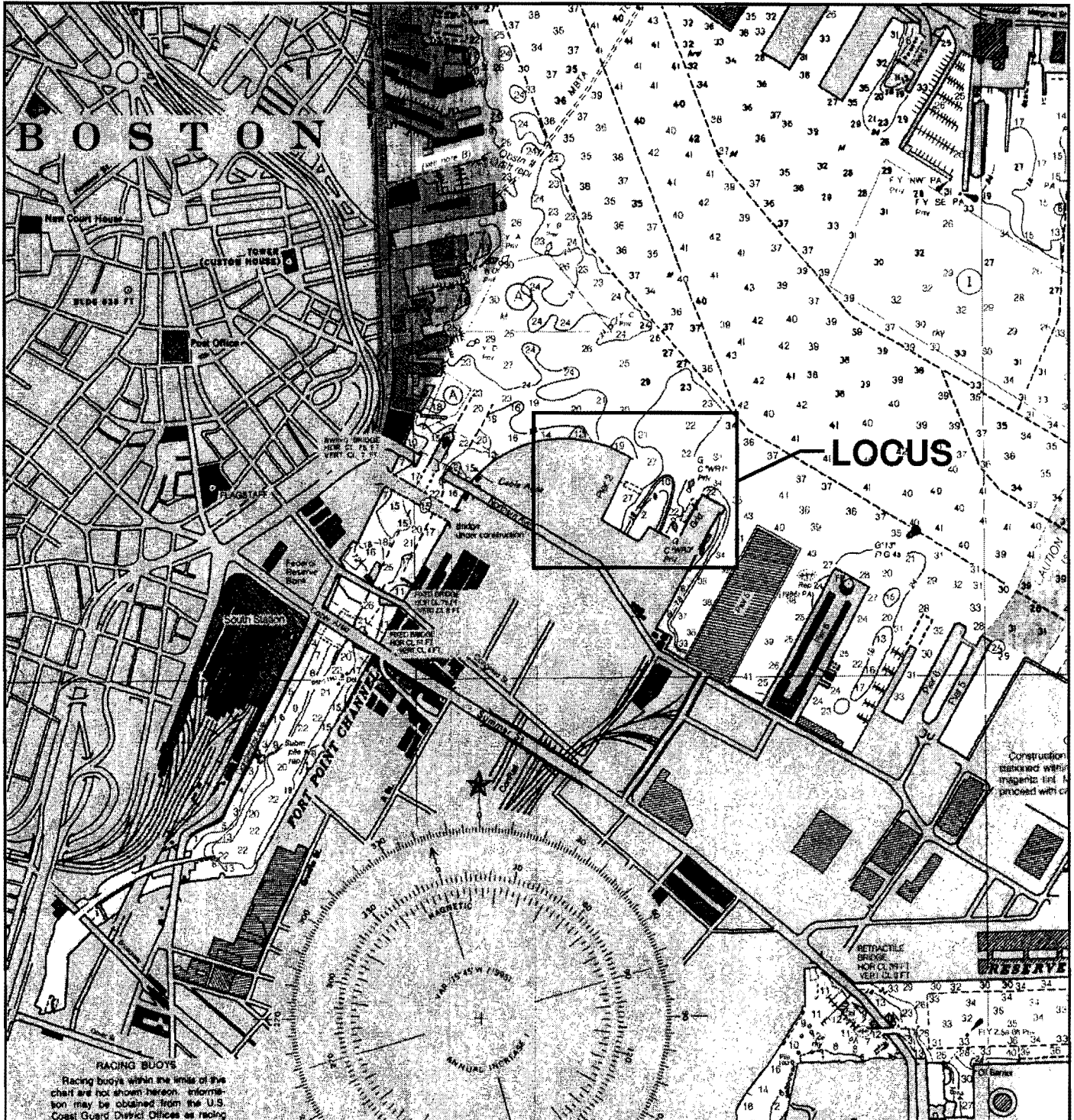
- ( X ) Permit, License or Assent from State.
- ( X ) Permit from Local Wetland Agency or Conservation Commission.
- ( X ) Water Quality Certification in accordance with Section 401 of the Clean Water Act.

In order to properly evaluate this request for a long term permit extension and the additional structure, we are seeking public comment. Anyone wishing to comment is encouraged to do so. **Comments should be submitted in writing by the above date.** If you have any questions, please contact Crystal Gardner at (978) 318-8338, (800) 343-4789 or (800) 362-4367, if calling from within Massachusetts.

**Karen K. Adams**  
**Chief, Permits and Enforcement Branch**  
**Regulatory Division**

If you would prefer not to continue receiving Public Notices by email, please contact Ms. Tina Chaisson at (978) 318-8058 or e-mail her at [bettina.m.chaisson@usace.army.mil](mailto:bettina.m.chaisson@usace.army.mil). You may also check here ( ) and return this portion of the Public Notice to: Bettina Chaisson, Regulatory Division, U.S. Army Corps of Engineers, 696 Virginia Road, Concord, MA 01742-2751.

NAME: \_\_\_\_\_  
ADDRESS: \_\_\_\_\_  
PHONE: \_\_\_\_\_



PURPOSE: CONSTRUCT NEW  
HARBOR WALK, FLOATING DOCK  
SYSTEM, WAVE ATTENUATOR, TIDAL  
PARK, & PIER, AND REPAIR SEAWALL

DATUM: BOSTON CITY BASE = 0.0'

CHILDS ENGINEERING CORPORATION  
BOX 333 MEDFIELD, MA. 02052

## VICINITY PLAN

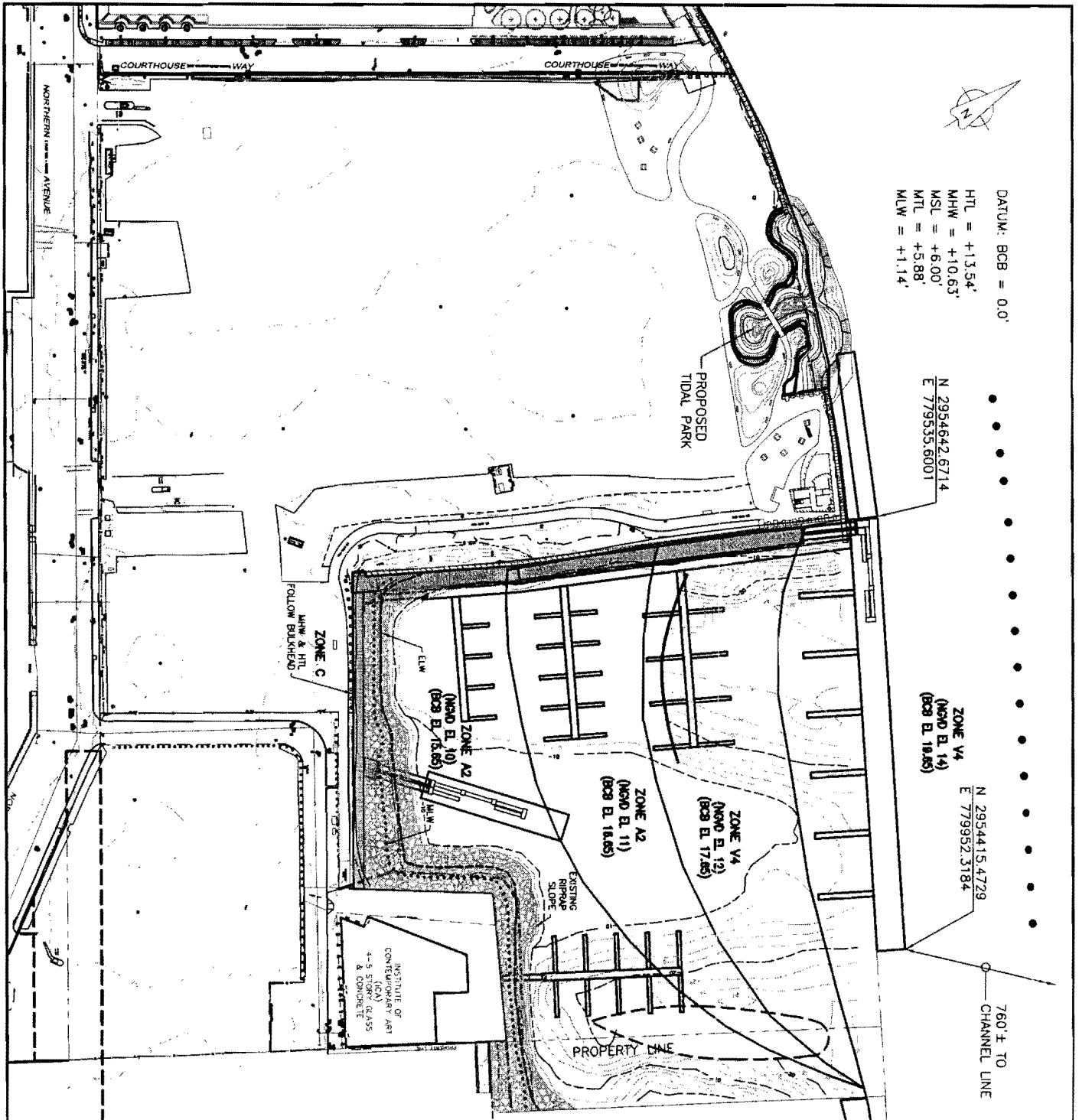
SCALE: NONE

APPLICATION BY:  
FAN PIER DEVELOPMENT, LLC  
C/O THE FALLON COMPANY  
TWO SEAPORT LANE  
BOSTON, MA 02210

FAN PIER DEVELOPMENT PROJECT

IN: BOSTON INNER HARBOR  
AT: FAN PIER  
COUNTY: SUFFOLK STATE: MA

SHEET 1 OF 19 DATE: 4/10/07



DATUM: BCB = 0.0'  
 HTL = +13.54'  
 MHW = +10.63'  
 MSL = +6.00'  
 MTL = +5.88'  
 MLW = +1.14'

N 2954642.6714  
 E 7795333.6001

ZONE V4  
 (NMO EL. 14)  
 (BCB EL. 18.85)

N 2954415.4729  
 E 779952.3184

760' F. TO  
 CHANNEL LINE

PURPOSE: CONSTRUCT NEW HARBOR WALK, FLOATING DOCK SYSTEM, WAVE ATTENUATOR, TIDAL PARK, & PIER, AND REPAIR SEAWALL  
 DATUM: BOSTON CITY BASE = 0.0'  
 CHILDS ENGINEERING CORPORATION  
 BOX 333 MEDFIELD, MA. 02052

**SITE PLAN**  
 150 75 0 150  
 SCALE IN FEET  
 APPLICATION BY:  
 FAN PIER DEVELOPMENT, LLC  
 C/O THE FALLON COMPANY  
 TWO SEAPORT LANE  
 BOSTON, MA 02210

FAN PIER DEVELOPMENT PROJECT  
 IN: BOSTON INNER HARBOR  
 AT: FAN PIER  
 COUNTY: SUFFOLK STATE: MA  
 SHEET 2 OF 19 DATE: 4/10/07



PURPOSE: CONSTRUCT NEW  
HARBOR WALK, FLOATING DOCK  
SYSTEM, WAVE ATTENUATOR, TIDAL  
PARK, & PIER, AND REPAIR SEAWALL

DATUM: BOSTON CITY BASE = 0.0'

CHILDS ENGINEERING CORPORATION  
BOX 333 MEDFIELD, MA. 02052

### PARCEL PLAN

400 200 0 400

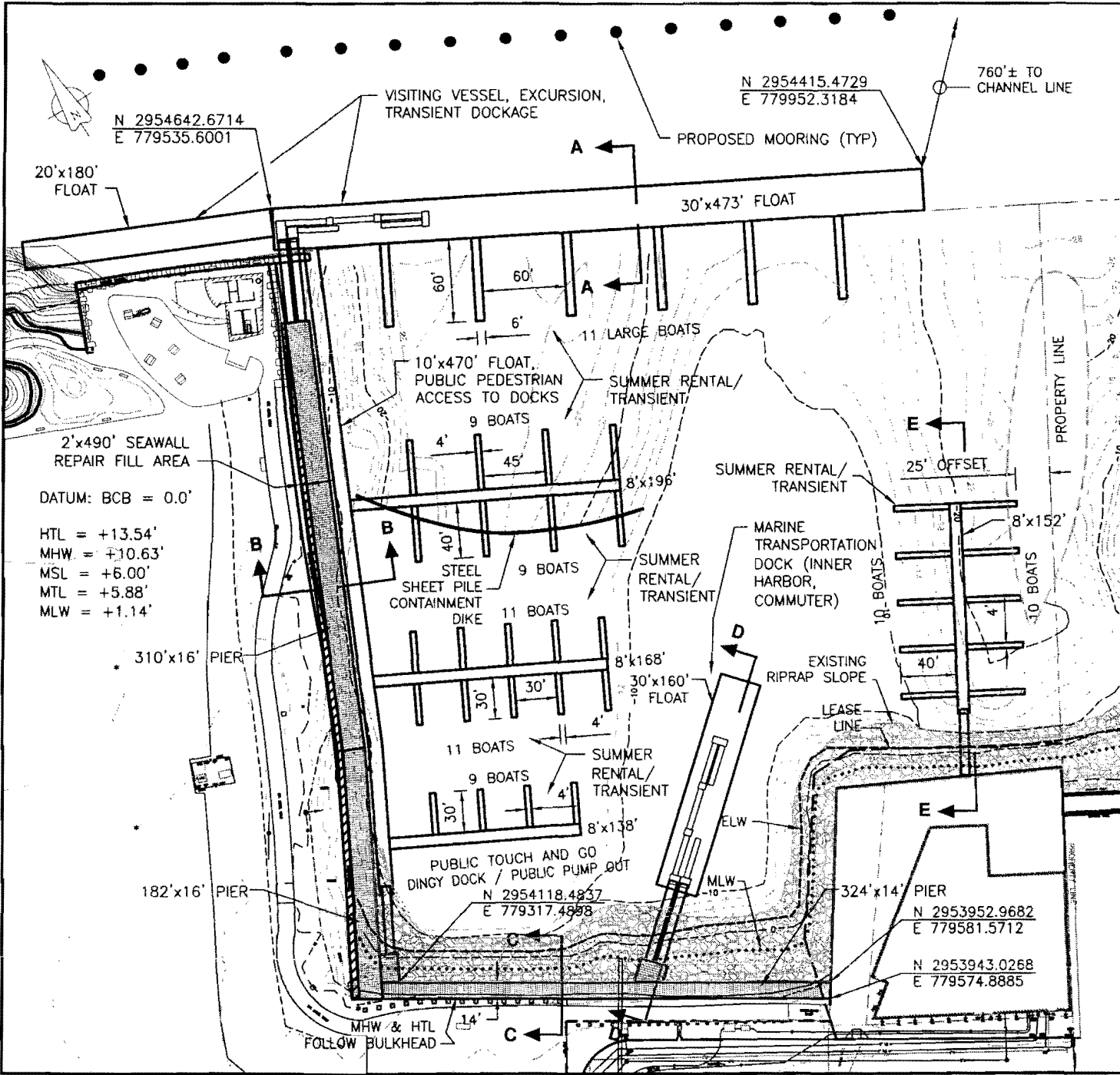
SCALE IN FEET

APPLICATION BY:  
FAN PIER DEVELOPMENT, LLC  
C/O THE FALLON COMPANY  
TWO SEAPORT LANE  
BOSTON, MA 02210

FAN PIER DEVELOPMENT PROJECT

IN: BOSTON INNER HARBOR  
AT: FAN PIER  
COUNTY: SUFFOLK STATE: MA

SHEET 3 OF 19 DATE: 4/10/07



N 2954642.6714  
E 779535.6001

N 2954415.4729  
E 779552.3184

760'± TO  
CHANNEL LINE

20'x180'  
FLOAT

30'x473' FLOAT

VISITING VESSEL, EXCURSION,  
TRANSIENT DOCKAGE

PROPOSED MOORING (TYP)

2'x490' SEAWALL  
REPAIR FILL AREA

DATUM: BCB = 0.0'

HTL = +13.54'  
MHW = +10.63'  
MSL = +6.00'  
MTL = +5.88'  
MLW = +1.14'

310'x16' PIER

182'x16' PIER

10'x470' FLOAT,  
PUBLIC PEDESTRIAN  
ACCESS TO DOCKS

11 LARGE BOATS

9 BOATS

9 BOATS

9 BOATS

11 BOATS

11 BOATS

9 BOATS

11 BOATS

9 BOATS

11 BOATS

9 BOATS

11 BOATS

9 BOATS

11 BOATS

9 BOATS

11 BOATS

9 BOATS

11 BOATS

9 BOATS

11 BOATS

9 BOATS

11 BOATS

9 BOATS

11 BOATS

9 BOATS

11 BOATS

9 BOATS

11 BOATS

9 BOATS

11 BOATS

9 BOATS

11 BOATS

9 BOATS

11 BOATS

9 BOATS

11 BOATS

9 BOATS

11 BOATS

9 BOATS

11 BOATS

9 BOATS

11 BOATS

9 BOATS

11 BOATS

9 BOATS

11 BOATS

9 BOATS

11 BOATS

9 BOATS

11 BOATS

9 BOATS

11 BOATS

9 BOATS

11 BOATS

9 BOATS

11 BOATS

9 BOATS

11 BOATS

9 BOATS

11 BOATS

9 BOATS

11 BOATS

9 BOATS

11 BOATS

9 BOATS

11 BOATS

9 BOATS

11 BOATS

9 BOATS

11 BOATS

9 BOATS

11 BOATS

9 BOATS

11 BOATS

9 BOATS

11 BOATS

9 BOATS

11 BOATS

9 BOATS

11 BOATS

9 BOATS

11 BOATS

9 BOATS

11 BOATS

9 BOATS

11 BOATS

9 BOATS

11 BOATS

9 BOATS

11 BOATS

9 BOATS

11 BOATS

9 BOATS

11 BOATS

9 BOATS

11 BOATS

9 BOATS

11 BOATS

9 BOATS

11 BOATS

9 BOATS

11 BOATS

9 BOATS

11 BOATS

9 BOATS

11 BOATS

9 BOATS

11 BOATS

9 BOATS

11 BOATS

9 BOATS

11 BOATS

9 BOATS

11 BOATS

9 BOATS

11 BOATS

9 BOATS

11 BOATS

9 BOATS

11 BOATS

9 BOATS

11 BOATS

9 BOATS

11 BOATS

9 BOATS

11 BOATS

9 BOATS

11 BOATS

9 BOATS

11 BOATS

9 BOATS

11 BOATS

9 BOATS

11 BOATS

9 BOATS

11 BOATS

9 BOATS

11 BOATS

9 BOATS

11 BOATS

9 BOATS

11 BOATS

9 BOATS

11 BOATS

9 BOATS

11 BOATS

9 BOATS

11 BOATS

9 BOATS

11 BOATS

9 BOATS

11 BOATS

9 BOATS

11 BOATS

9 BOATS

11 BOATS

9 BOATS

11 BOATS

9 BOATS

11 BOATS

9 BOATS

11 BOATS

9 BOATS

11 BOATS

9 BOATS

11 BOATS

9 BOATS

11 BOATS

9 BOATS

11 BOATS

9 BOATS

11 BOATS

9 BOATS

11 BOATS

9 BOATS

11 BOATS

9 BOATS

11 BOATS

9 BOATS

11 BOATS

9 BOATS

11 BOATS

9 BOATS

11 BOATS

9 BOATS

11 BOATS

9 BOATS

11 BOATS

9 BOATS

11 BOATS

9 BOATS

11 BOATS

9 BOATS

11 BOATS

9 BOATS

11 BOATS

9 BOATS

11 BOATS

9 BOATS

11 BOATS

9 BOATS

11 BOATS

9 BOATS

11 BOATS

9 BOATS

11 BOATS

9 BOATS

11 BOATS

9 BOATS

11 BOATS

9 BOATS

11 BOATS

9 BOATS

11 BOATS

9 BOATS

11 BOATS

9 BOATS

11 BOATS

9 BOATS

11 BOATS

9 BOATS

11 BOATS

9 BOATS

11 BOATS

9 BOATS

11 BOATS

9 BOATS

11 BOATS

9 BOATS

11 BOATS

9 BOATS

11 BOATS

9 BOATS

11 BOATS

9 BOATS

11 BOATS

9 BOATS

11 BOATS

9 BOATS

11 BOATS

9 BOATS

11 BOATS

9 BOATS

11 BOATS

9 BOATS

11 BOATS

9 BOATS

11 BOATS

9 BOATS

11 BOATS

9 BOATS

11 BOATS

9 BOATS

11 BOATS

9 BOATS

11 BOATS

9 BOATS

11 BOATS

9 BOATS

11 BOATS

9 BOATS

11 BOATS

9 BOATS

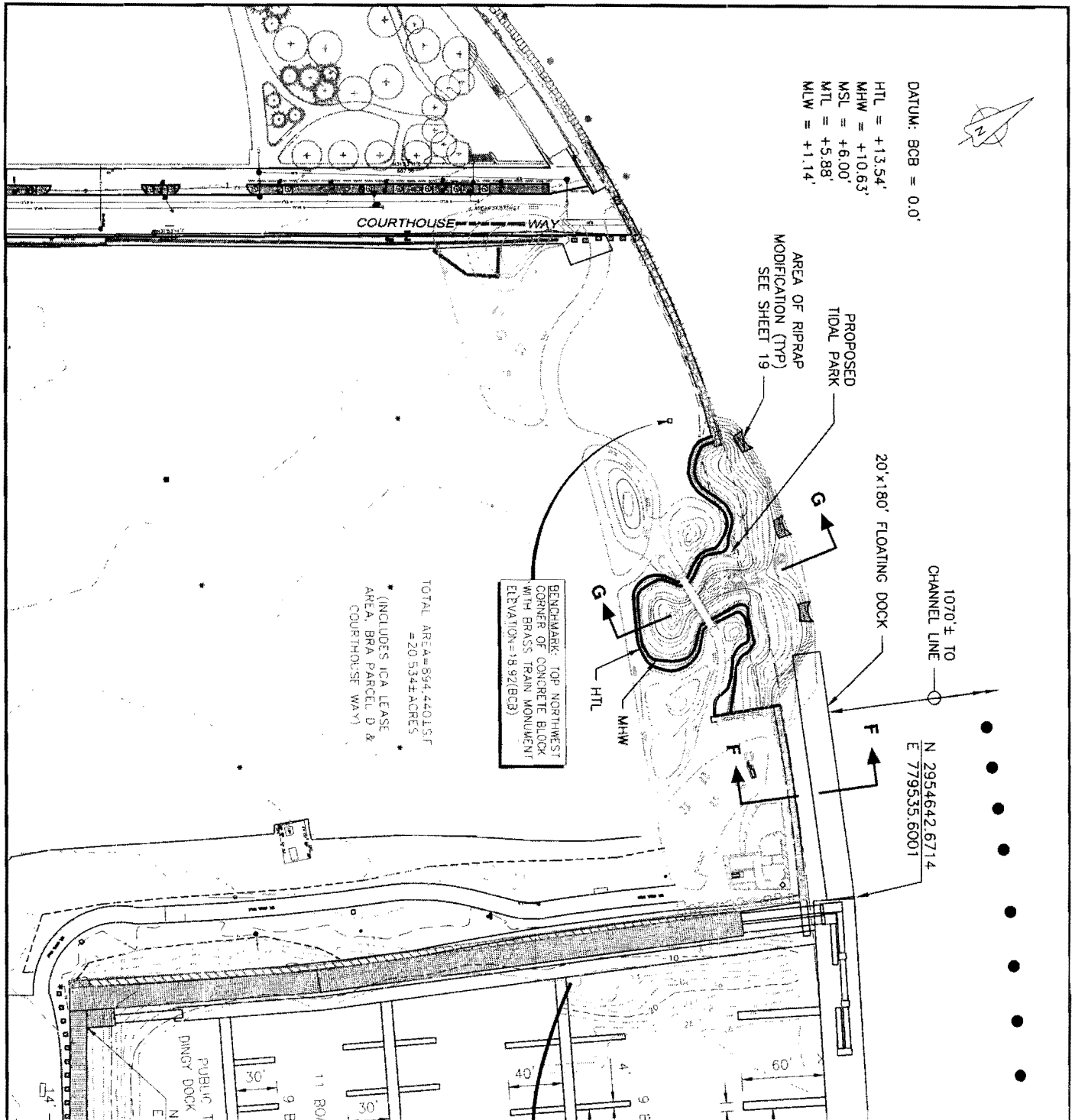
11 BOATS

9 BOATS

11 BOATS

9 BOATS

11 BOATS



DATUM: BCB = 0.0'

HTL = +13.54'  
 MHW = +10.63'  
 MSL = +6.00'  
 MTL = +5.88'  
 MLW = +1.14'

TOTAL AREA = 594,440.1 SF  
 = 20.5344 ACRES

\* INCLUDES ICA LEASE  
 AREA, BRA PARCEL D &  
 COURTHOUSE WAY

BENCHMARK: TOP NORTHWEST  
 CORNER OF CONCRETE BLOCK  
 WITH BRASS IRON MONUMENT  
 ELEVATION = 18.92(BCB)

1070 ± TO  
 CHANNEL LINE

N 2954642.6714  
 E 7795351.6001

PURPOSE: CONSTRUCT NEW  
 HARBOR WALK, FLOATING DOCK  
 SYSTEM, WAVE ATTENUATOR, TIDAL  
 PARK, & PIER, AND REPAIR SEAWALL

DATUM: BOSTON CITY BASE = 0.0'

CHILDS ENGINEERING CORPORATION  
 BOX 333 MEDFIELD, MA. 02052

**PERIMETER PLAN**

100 50 0 100

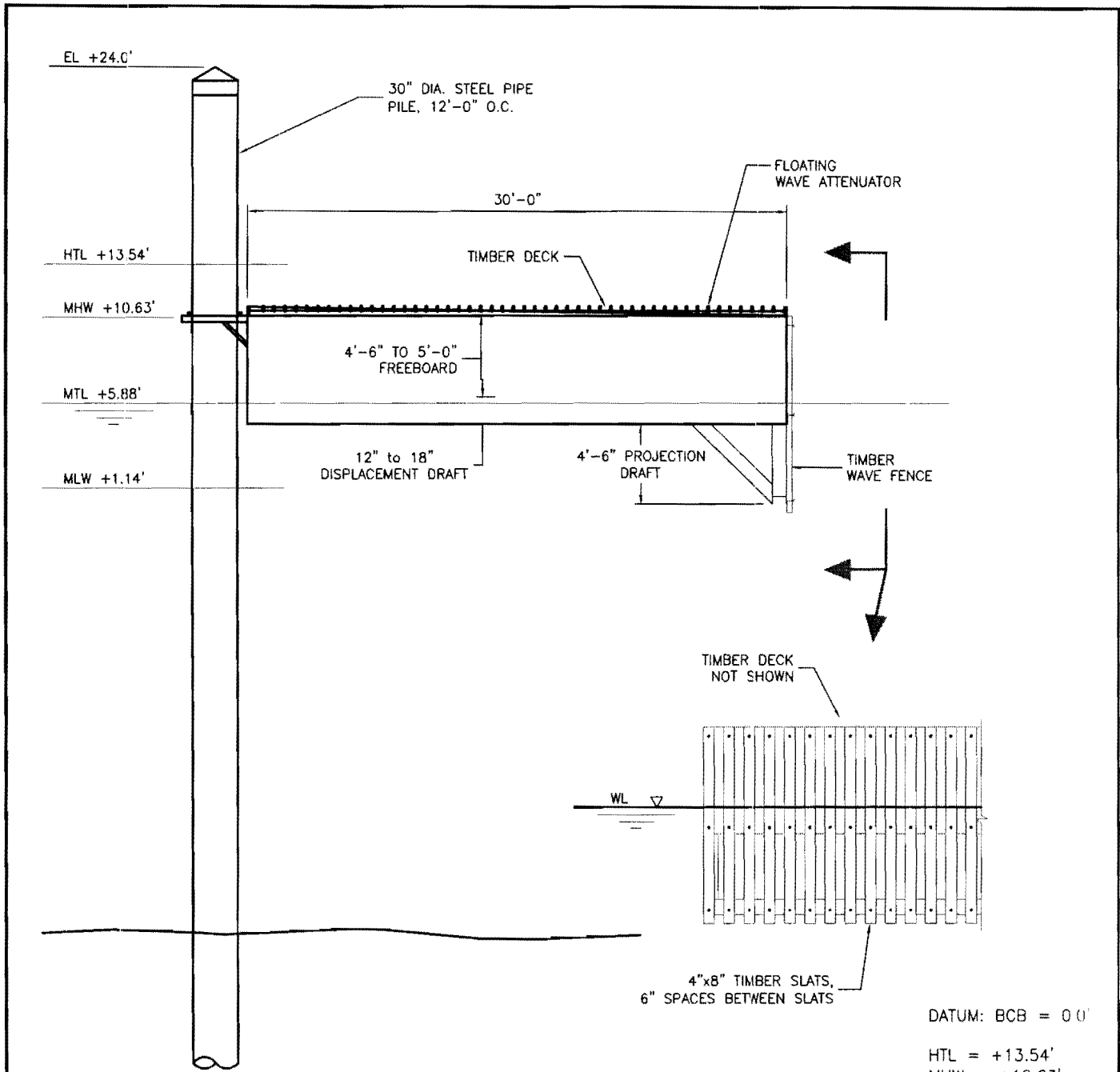
SCALE IN FEET

APPLICATION BY:  
 FAN PIER DEVELOPMENT, LLC  
 C/O THE FALLON COMPANY  
 TWO SEAPORT LANE  
 BOSTON, MA 02210

FAN PIER DEVELOPMENT PROJECT

IN: BOSTON INNER HARBOR  
 AT: FAN PIER  
 COUNTY: SUFFOLK STATE: MA

SHEET 5 OF 19 DATE: 4/10/07



**SECTION A-A**

SCALE: 1/8"=1'-0"

DATUM: BCB = 0.0'

HTL = +13.54'

MHW = +10.63'

MSL = +6.00'

MTL = +5.88'

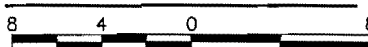
MLW = +1.14'

PURPOSE: CONSTRUCT NEW HARBOR WALK, FLOATING DOCK SYSTEM, WAVE ATTENUATOR, TIDAL PARK, & PIER, AND REPAIR SEAWALL

DATUM: BOSTON CITY BASE = 0.0'

CHILDS ENGINEERING CORPORATION  
BOX 333 MEDFIELD, MA. 02052

**SECTION A-A**



SCALE IN FEET

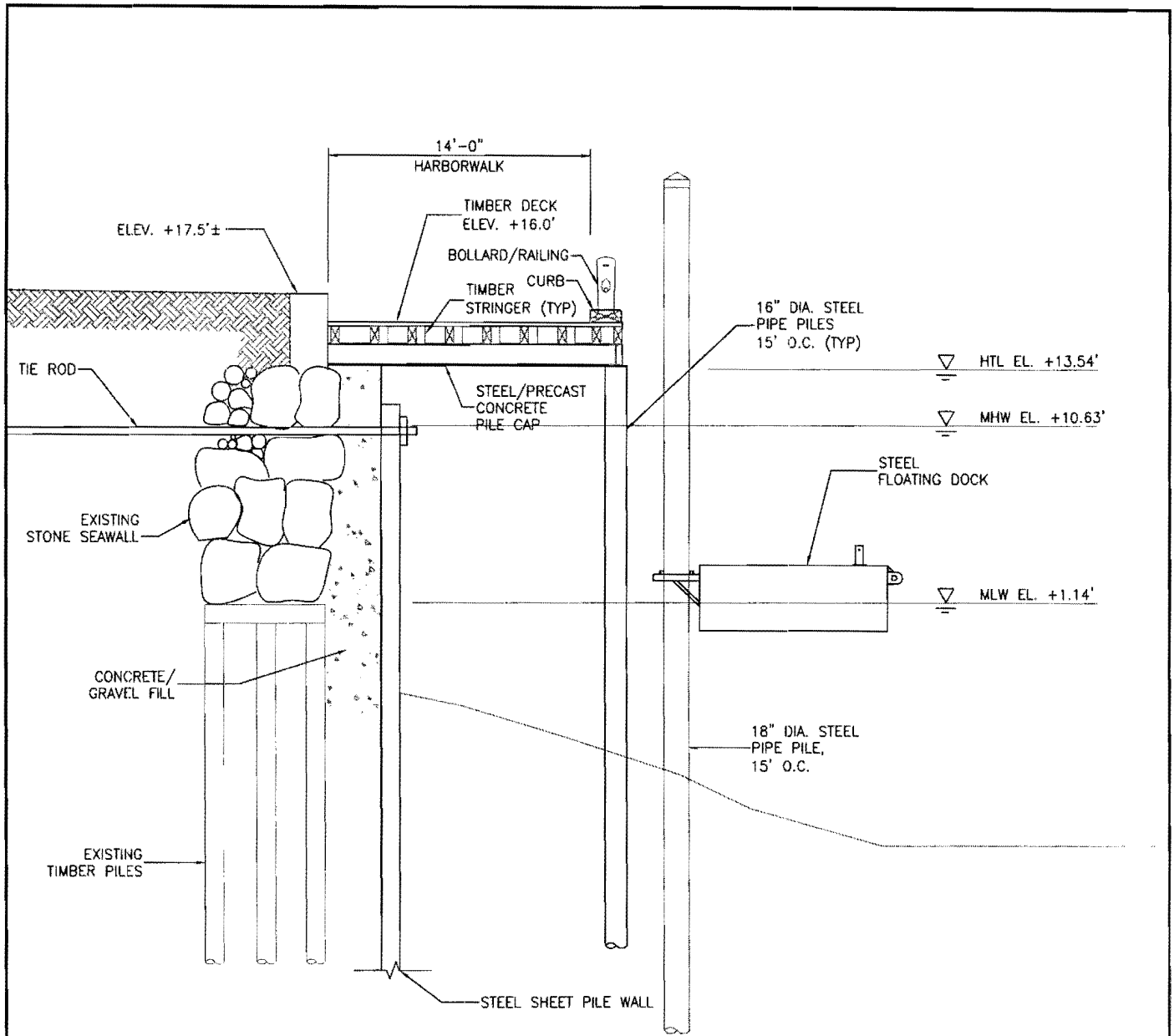
APPLICATION BY:  
FAN PIER DEVELOPMENT, LLC  
C/O THE FALLON COMPANY  
TWO SEAPORT LANE  
BOSTON, MA 02210

FAN PIER DEVELOPMENT PROJECT

IN: BOSTON INNER HARBOR  
AT: FAN PIER  
COUNTY: SUFFOLK STATE: MA

SHEET 6 OF 19 DATE: 4/10/07





**SECTION B-B**

SCALE: 1/8"=1'-0"

DATUM: BCB = 0.0'

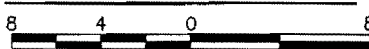
HTL = +13.54'  
 MHW = +10.63'  
 MSL = +6.00'  
 MTL = +5.88'  
 MLW = +1.14'

PURPOSE: CONSTRUCT NEW HARBOR WALK, FLOATING DOCK SYSTEM, WAVE ATTENUATOR, TIDAL PARK, & PIER, AND REPAIR SEAWALL

DATUM: BOSTON CITY BASE = 0.0'

CHILDS ENGINEERING CORPORATION  
 BOX 333 MEDFIELD, MA. 02052

**SECTION B-B**



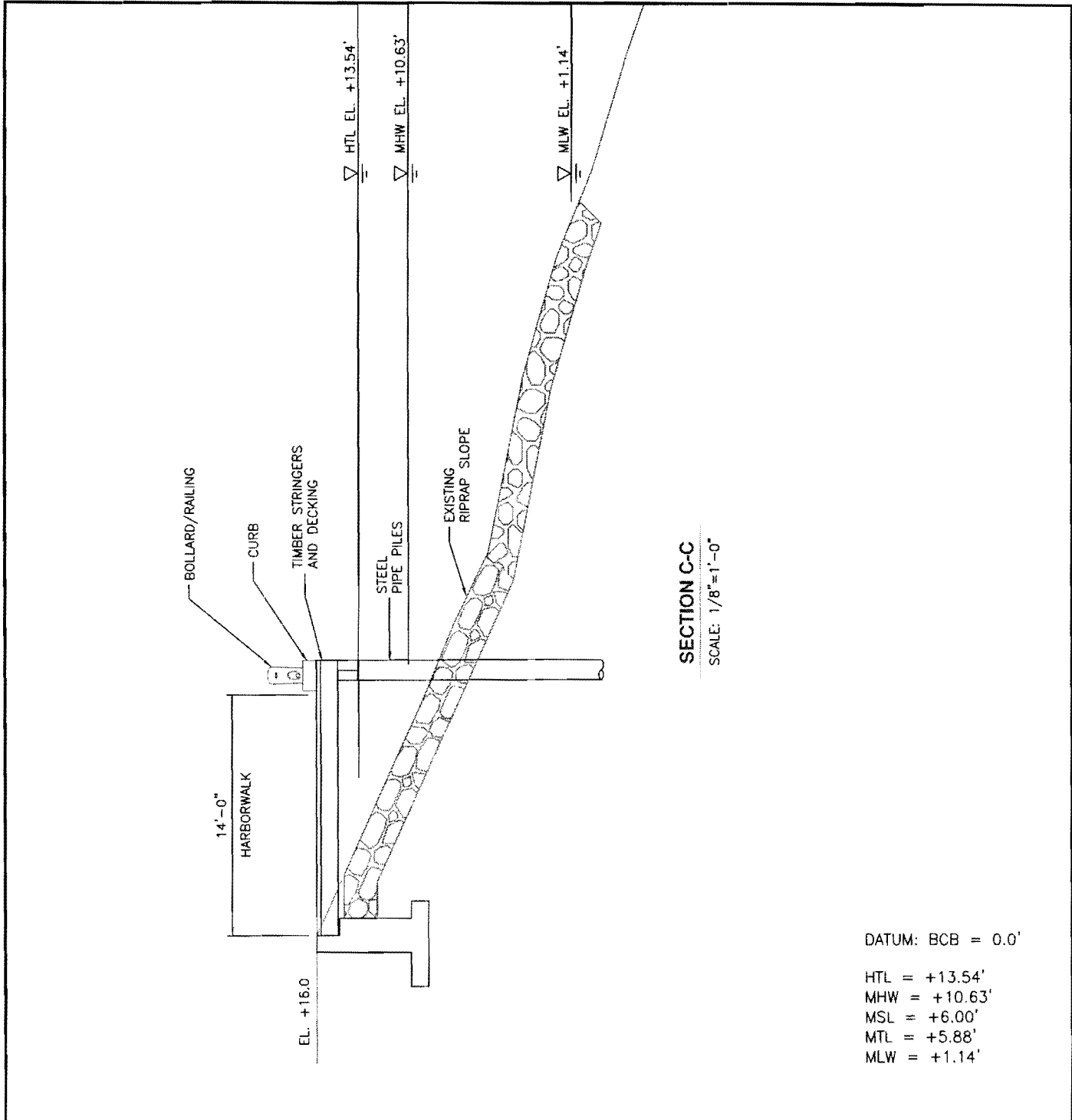
SCALE IN FEET

APPLICATION BY:  
 FAN PIER DEVELOPMENT, LLC  
 C/O THE FALLON COMPANY  
 TWO SEAPORT LANE  
 BOSTON, MA 02210

FAN PIER DEVELOPMENT PROJECT

IN: BOSTON INNER HARBOR  
 AT: FAN PIER  
 COUNTY: SUFFOLK STATE: MA

SHEET 7 OF 19 DATE: 4/10/07



PURPOSE: CONSTRUCT NEW HARBOR WALK, FLOATING DOCK SYSTEM, WAVE ATTENUATOR, TIDAL PARK, & PIER, AND REPAIR SEAWALL

DATUM: BOSTON CITY BASE = 0.0'

CHILDS ENGINEERING CORPORATION  
BOX 333 MEDFIELD, MA. 02052

**SECTION C-C**

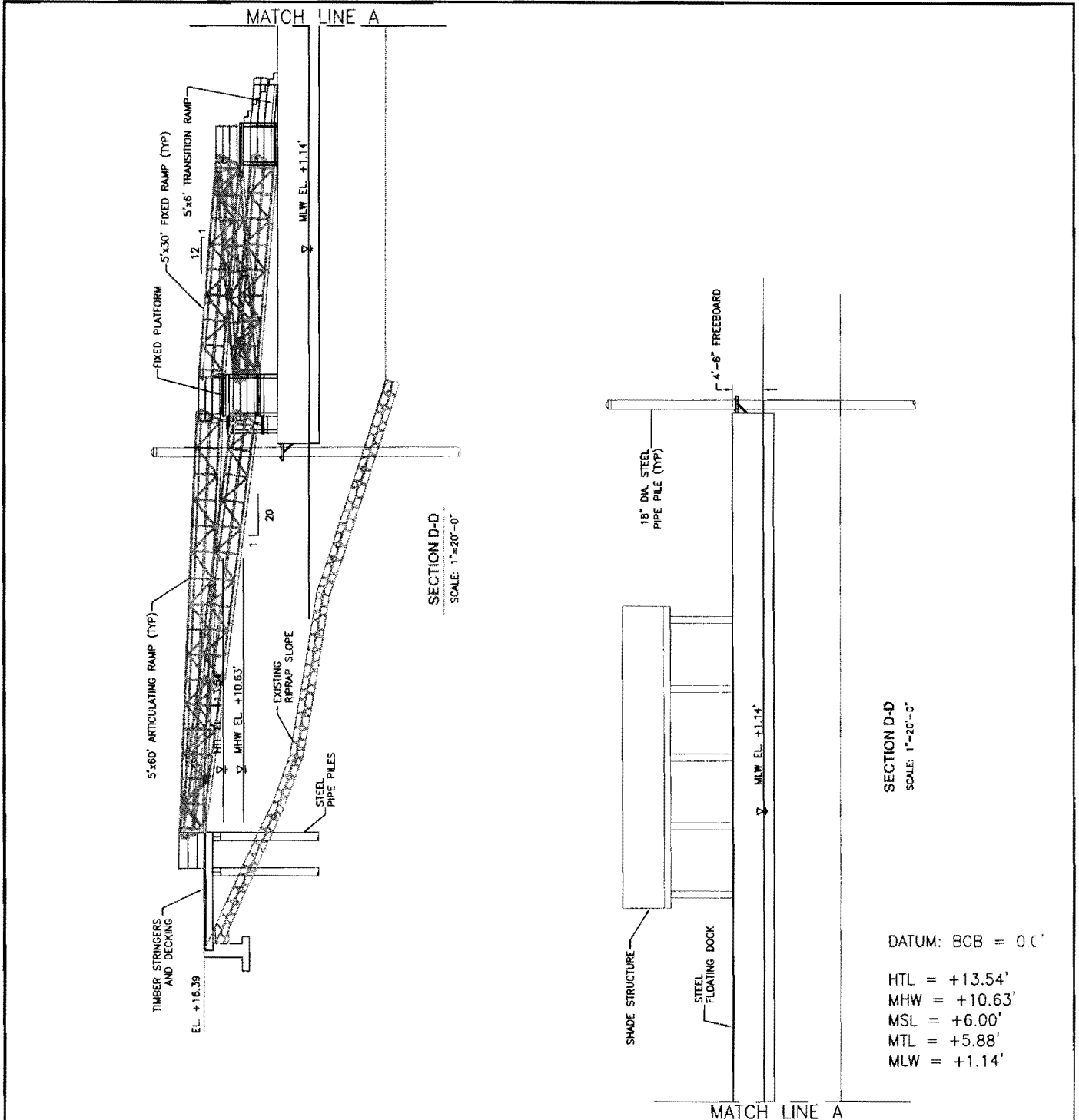
SCALE IN FEET

APPLICATION BY:  
FAN PIER DEVELOPMENT, LLC  
C/O THE FALLON COMPANY  
TWO SEAPORT LANE  
BOSTON, MA 02210

FAN PIER DEVELOPMENT PROJECT

IN: BOSTON INNER HARBOR  
AT: FAN PIER  
COUNTY: SUFFOLK STATE: MA

SHEET 8 OF 19 DATE: 4/10/07



PURPOSE: CONSTRUCT NEW HARBOR WALK, FLOATING DOCK SYSTEM, WAVE ATTENUATOR, TIDAL PARK, & PIER, AND REPAIR SEAWALL

DATUM: BOSTON CITY BASE = 0.0'

CHILDS ENGINEERING CORPORATION  
 BOX 333 MEDFIELD, MA. 02052

**SECTION D-D**

20    10    0    20

SCALE IN FEET

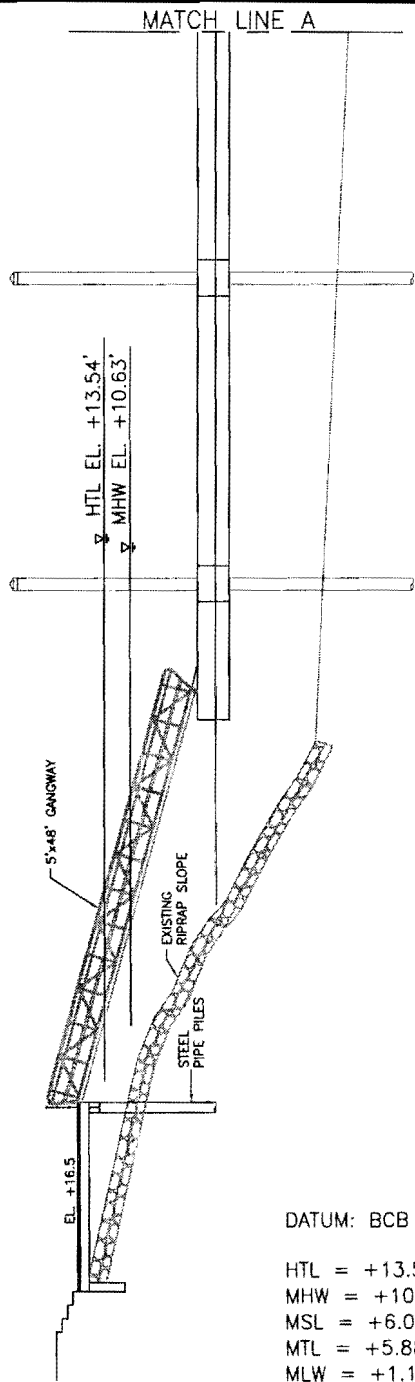
APPLICATION BY:  
 FAN PIER DEVELOPMENT, LLC  
 C/O THE FALLON COMPANY  
 TWO SEAPORT LANE  
 BOSTON, MA 02210

FAN PIER DEVELOPMENT PROJECT

IN: BOSTON INNER HARBOR  
 AT: FAN PIER  
 COUNTY: SUFFOLK STATE: MA

SHEET 9 OF 19 DATE: 4/10/07

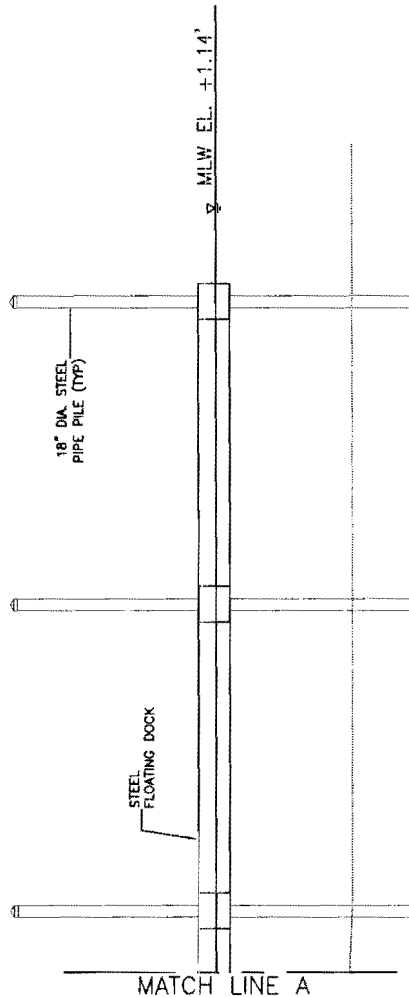
- DATUM: BCB = 0.0'
- HTL = +13.54'
  - MHW = +10.63'
  - MSL = +6.00'
  - MTL = +5.88'
  - MLW = +1.14'



SECTION E-E  
SCALE: 1"=20'-0"

DATUM: BCB = 0.0'

HTL = +13.54'  
MHW = +10.63'  
MSL = +6.00'  
MTL = +5.88'  
MLW = +1.14'



SECTION E-E  
SCALE: 1"=20'-0"

PURPOSE: CONSTRUCT NEW HARBOR WALK, FLOATING DOCK SYSTEM, WAVE ATTENUATOR, TIDAL PARK, & PIER, AND REPAIR SEAWALL

DATUM: BOSTON CITY BASE = 0.0'

CHILDS ENGINEERING CORPORATION  
BOX 333 MEDFIELD, MA. 02052

### SECTION E-E



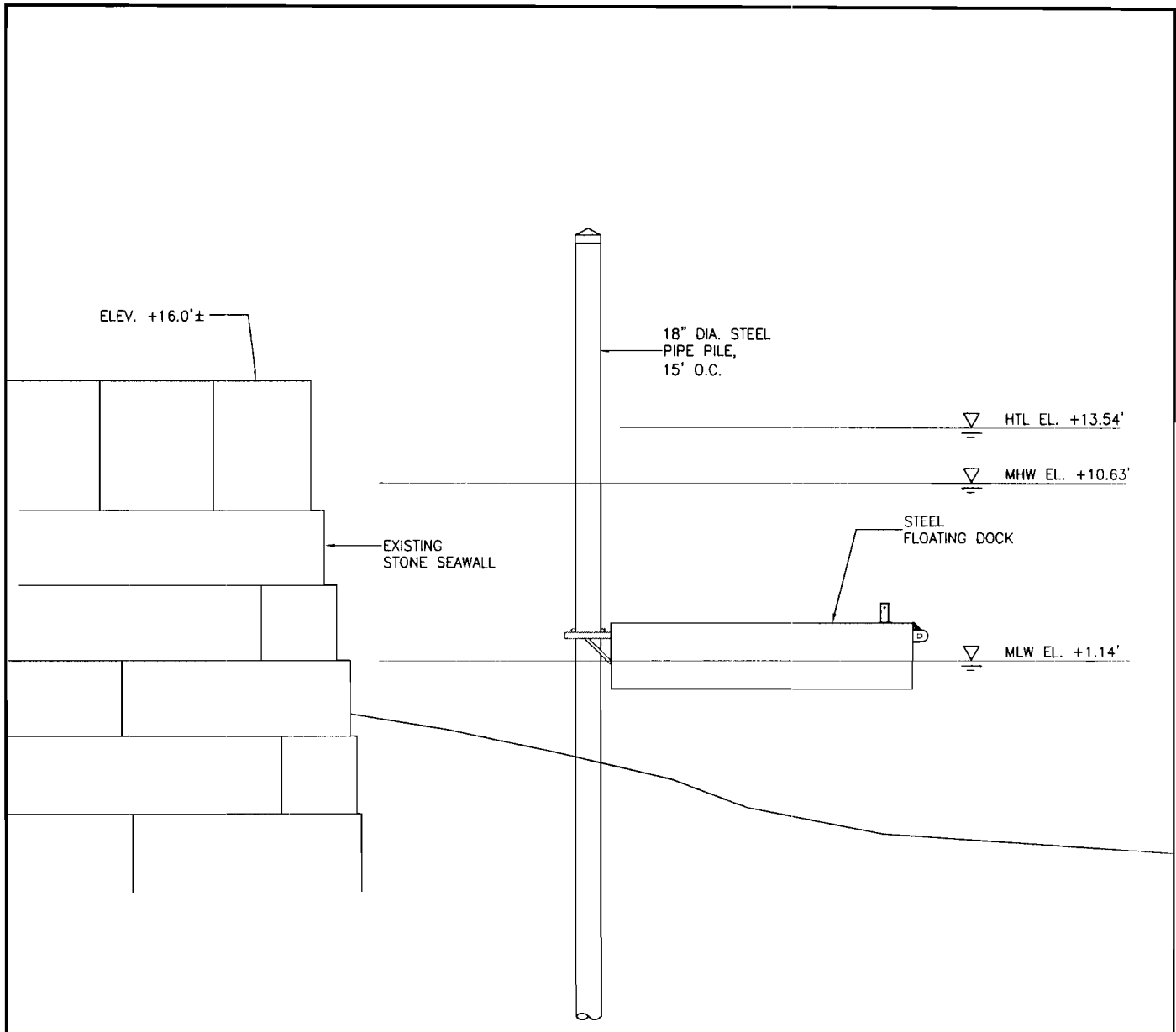
SCALE IN FEET

APPLICATION BY:  
FAN PIER DEVELOPMENT, LLC  
C/O THE FALLON COMPANY  
TWO SEAPORT LANE  
BOSTON, MA 02210

FAN PIER DEVELOPMENT PROJECT

IN: BOSTON INNER HARBOR  
AT: FAN PIER  
COUNTY: SUFFOLK STATE: MA

SHEET 10 OF 19 DATE: 4/10/07



**SECTION F-F**

SCALE: 1/8"=1'-0"

DATUM: BCB = 0.0'

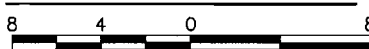
HTL = +13.54'  
 MHW = +10.63'  
 MSL = +6.00'  
 MTL = +5.88'  
 MLW = +1.14'

PURPOSE: CONSTRUCT NEW HARBOR WALK, FLOATING DOCK SYSTEM, WAVE ATTENUATOR, TIDAL PARK, & PIER, AND REPAIR SEAWALL

DATUM: BOSTON CITY BASE = 0.0'

CHILDS ENGINEERING CORPORATION  
 BOX 333 MEDFIELD, MA. 02052

**SECTION F-F**



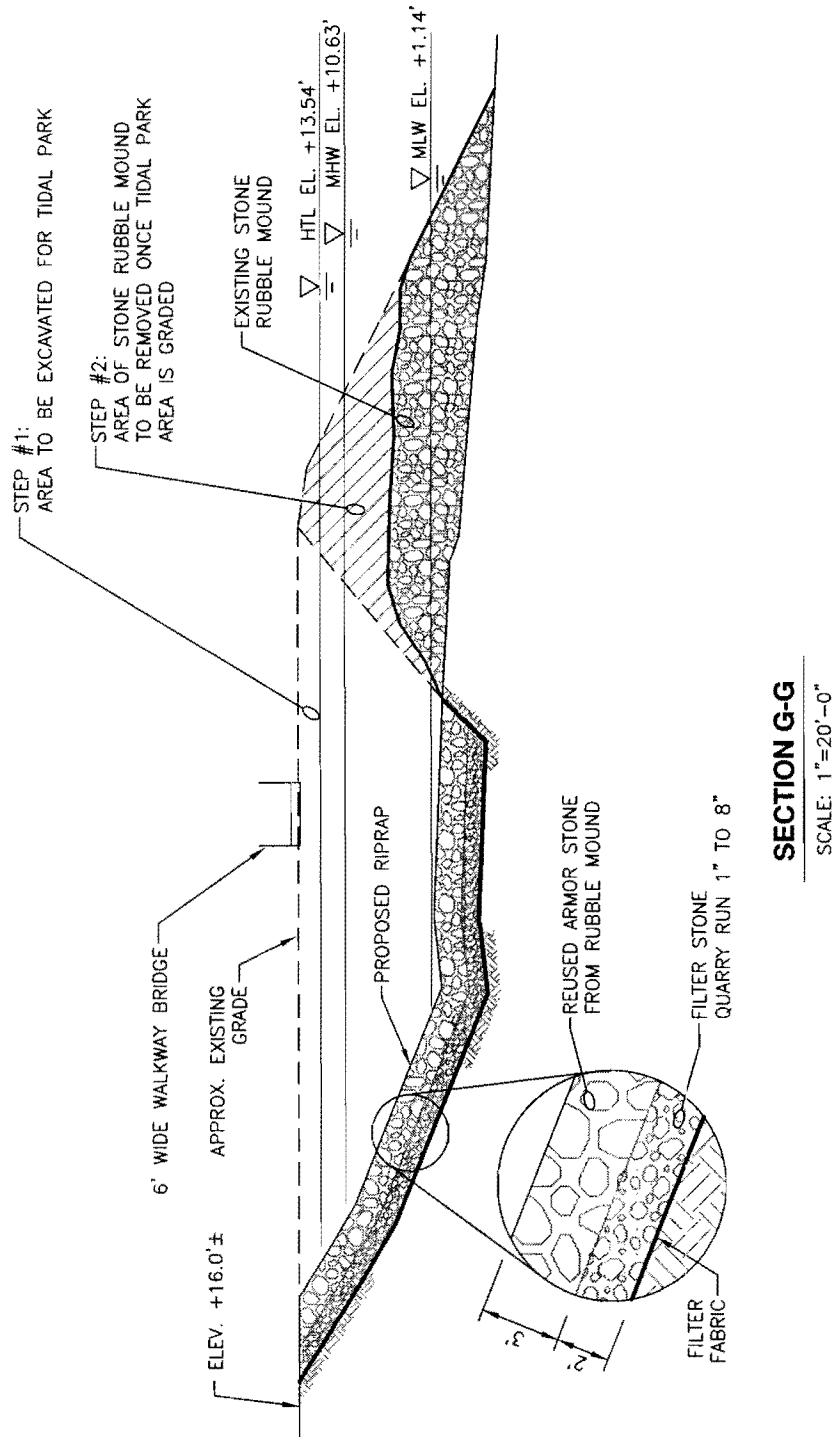
SCALE IN FEET

APPLICATION BY:  
 FAN PIER DEVELOPMENT, LLC  
 C/O THE FALLON COMPANY  
 TWO SEAPORT LANE  
 BOSTON, MA 02210

FAN PIER DEVELOPMENT PROJECT

IN: BOSTON INNER HARBOR  
 AT: FAN PIER  
 COUNTY: SUFFOLK STATE: MA

SHEET 11 OF 19 DATE: 4/10/07



**SECTION G-G**

SCALE: 1"=20'-0"

DATUM: BCB = 0.0'  
 HTL = +13.54'  
 MHW = +10.63'  
 MSL = +6.00'  
 MTL = +5.88'  
 MLW = +1.14'

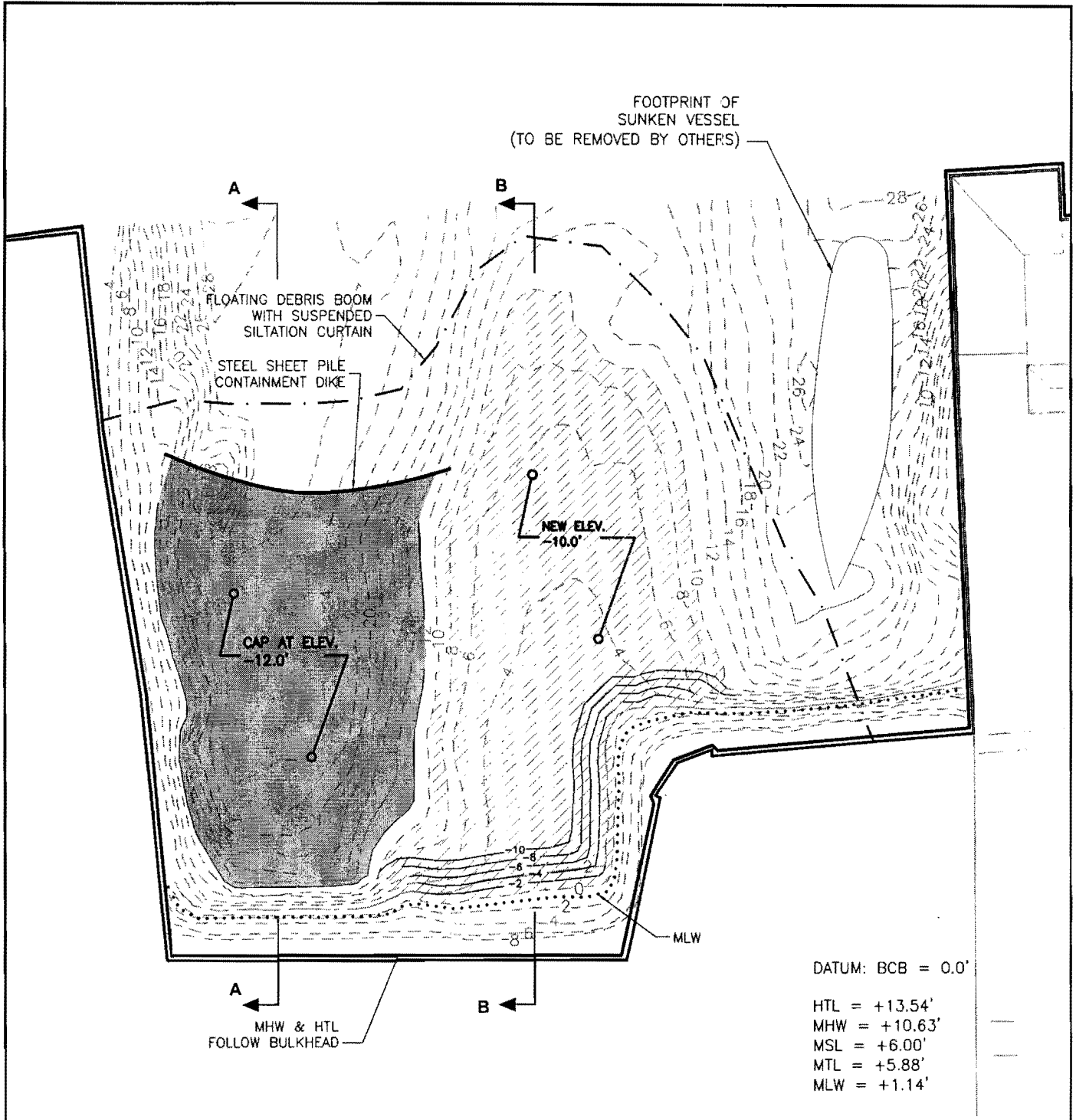
PURPOSE: CONSTRUCT NEW HARBOR WALK, FLOATING DOCK SYSTEM, WAVE ATTENUATOR, TIDAL PARK, & PIER, AND REPAIR SEAWALL  
 DATUM: BOSTON CITY BASE = 0.0'  
 CHILDS ENGINEERING CORPORATION  
 BOX 333 MEDFIELD, MA. 02052

**SECTION G-G**

SCALE IN FEET

APPLICATION BY:  
 FAN PIER DEVELOPMENT, LLC  
 C/O THE FALLON COMPANY  
 TWO SEAPORT LANE  
 BOSTON, MA 02210

FAN PIER DEVELOPMENT PROJECT  
 IN: BOSTON INNER HARBOR  
 AT: FAN PIER  
 COUNTY: SUFFOLK STATE: MA  
 SHEET 12 OF 19 DATE: 4/10/07



PURPOSE: CONSTRUCT NEW HARBOR WALK, FLOATING DOCK SYSTEM, WAVE ATTENUATOR, TIDAL PARK, & PIER, AND REPAIR SEAWALL

DATUM: BOSTON CITY BASE = 0.0'

CHILDS ENGINEERING CORPORATION  
BOX 333 MEDFIELD, MA. 02052

**DREDGE PLAN**

100 50 0 100

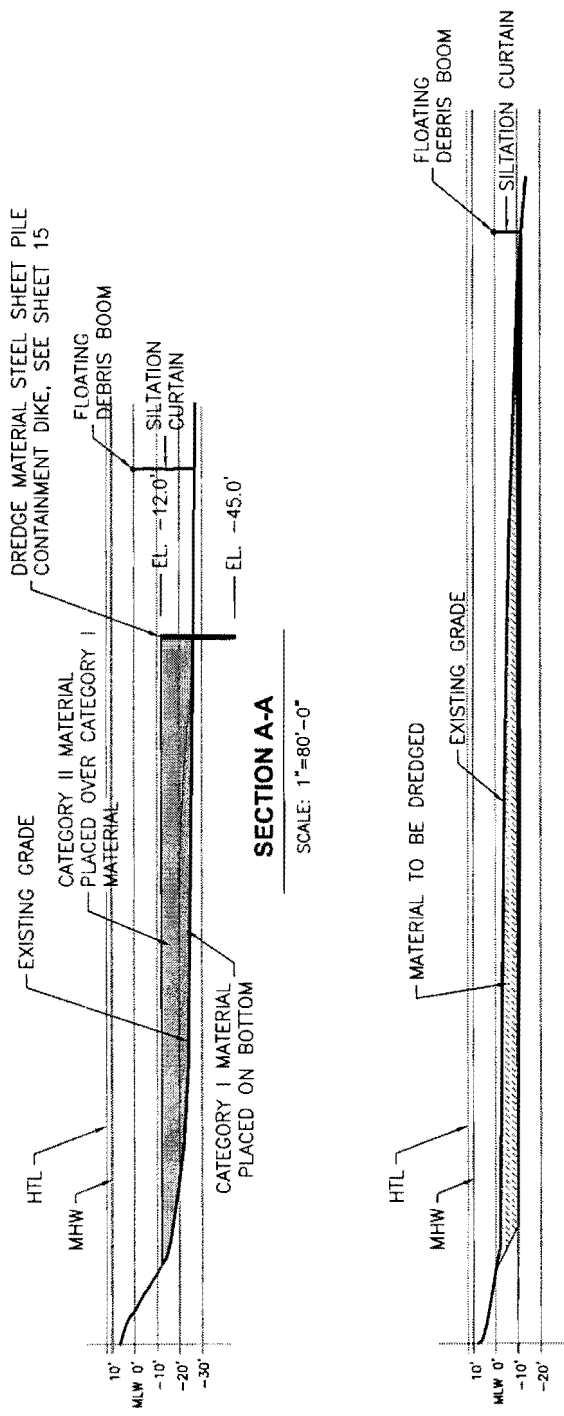
SCALE IN FEET

APPLICATION BY:  
FAN PIER DEVELOPMENT, LLC  
C/O THE FALLON COMPANY  
TWO SEAPORT LANE  
BOSTON, MA 02210

FAN PIER DEVELOPMENT PROJECT

IN: BOSTON INNER HARBOR  
AT: FAN PIER  
COUNTY: SUFFOLK STATE: MA

SHEET 13 OF 19 DATE: 4/10/07



**SECTION A-A**

SCALE: 1"=80'-0"

**SECTION B-B**

SCALE: 1"=80'-0"

DATUM: BCB = 0.0'

- HTL = +13.54'
- MHW = +10.63'
- MSL = +6.00'
- MTL = +5.88'
- MLW = +1.14'

PURPOSE: CONSTRUCT NEW HARBOR WALK, FLOATING DOCK SYSTEM, WAVE ATTENUATOR, TIDAL PARK, & PIER, AND REPAIR SEAWALL

DATUM: BOSTON CITY BASE = 0.0'

CHILDS ENGINEERING CORPORATION  
BOX 333 MEDFIELD, MA. 02052

**DREDGE SECTIONS**



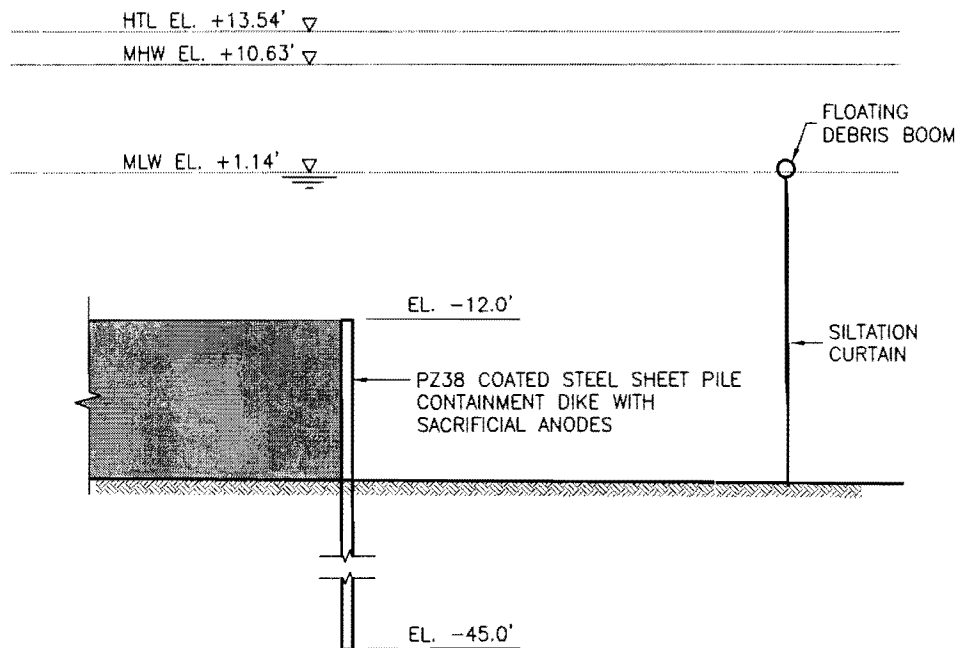
APPLICATION BY:  
FAN PIER DEVELOPMENT, LLC  
C/O THE FALLON COMPANY  
TWO SEAPORT LANE  
BOSTON, MA 02210

FAN PIER DEVELOPMENT PROJECT

IN: BOSTON INNER HARBOR  
AT: FAN PIER  
COUNTY: SUFFOLK STATE: MA

SHEET 14 OF 19 DATE: 4/10/07





**DIKE / DEBRIS BOOM DETAIL**

SCALE: 1/16"=1'-0"

DATUM: BCB = 0.0'

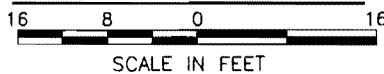
HTL = +13.54'  
MHW = +10.63'  
MSL = +6.00'  
MTL = +5.88'  
MLW = +1.14'

PURPOSE: CONSTRUCT NEW HARBOR WALK, FLOATING DOCK SYSTEM, WAVE ATTENUATOR, TIDAL PARK, & PIER, AND REPAIR SEAWALL

DATUM: BOSTON CITY BASE = 0.0'

CHILDS ENGINEERING CORPORATION  
BOX 333 MEDFIELD, MA. 02052

**DIKE SECTION**



APPLICATION BY:  
FAN PIER DEVELOPMENT, LLC  
C/O THE FALLON COMPANY  
TWO SEAPORT LANE  
BOSTON, MA 02210

FAN PIER DEVELOPMENT PROJECT

IN: BOSTON INNER HARBOR  
AT: FAN PIER  
COUNTY: SUFFOLK STATE: MA

SHEET 15 OF 19 DATE: 4/10/07



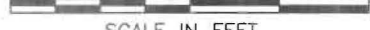
PURPOSE: CONSTRUCT NEW HARBOR WALK, FLOATING DOCK SYSTEM, WAVE ATTENUATOR, TIDAL PARK, & PIER, AND REPAIR SEAWALL

DATUM: BOSTON CITY BASE = 0.0'

CHILDS ENGINEERING CORPORATION  
BOX 333 MEDFIELD, MA. 02052

### PHASE 1 PLAN

150 75 0 150



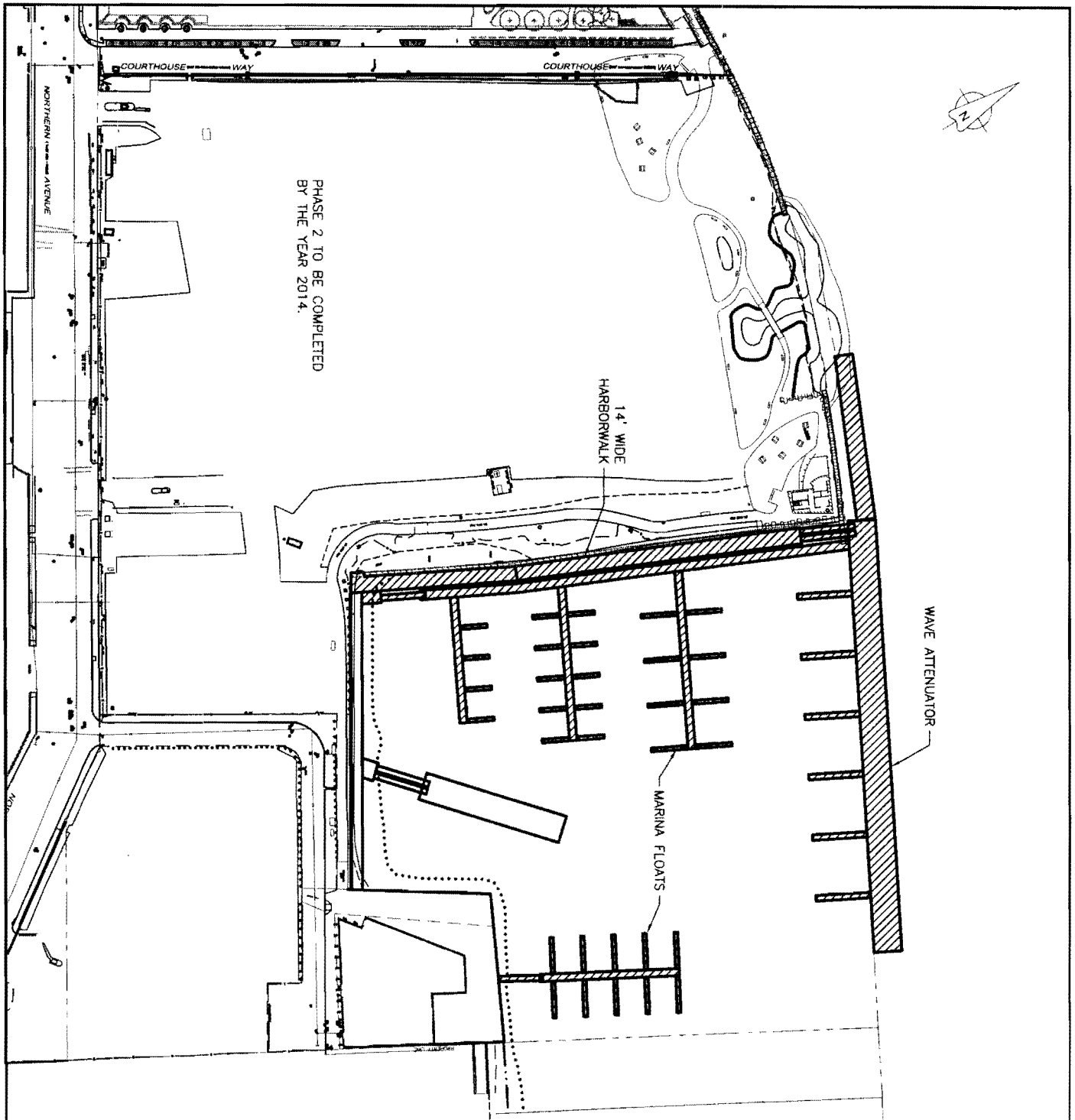
SCALE IN FEET

APPLICATION BY:  
FAN PIER DEVELOPMENT, LLC  
C/O THE FALLON COMPANY  
TWO SEAPORT LANE  
BOSTON, MA 02210

FAN PIER DEVELOPMENT PROJECT

IN: BOSTON INNER HARBOR  
AT: FAN PIER  
COUNTY: SUFFOLK STATE: MA

SHEET 16 OF 19 DATE: 4/10/07



PURPOSE: CONSTRUCT NEW HARBOR WALK, FLOATING DOCK SYSTEM, WAVE ATTENUATOR, TIDAL PARK, & PIER, AND REPAIR SEAWALL

DATUM: BOSTON CITY BASE = 0.0'

CHILDS ENGINEERING CORPORATION  
BOX 333 MEDFIELD, MA. 02052

**PHASE 2 PLAN**

150 75 0 150

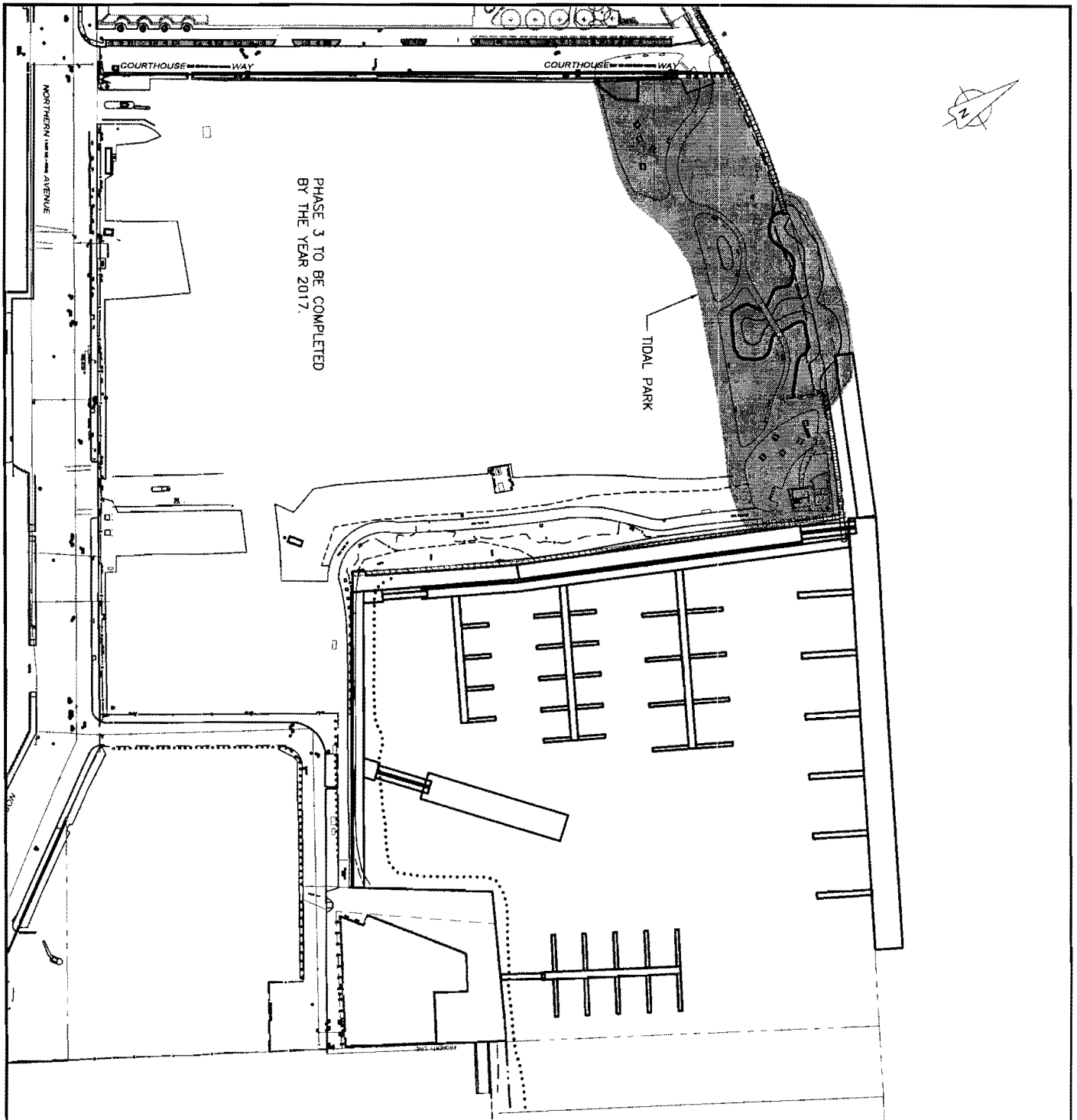
SCALE IN FEET

APPLICATION BY:  
FAN PIER DEVELOPMENT, LLC  
C/O THE FALLON COMPANY  
TWO SEAPORT LANE  
BOSTON, MA 02210

FAN PIER DEVELOPMENT PROJECT

IN: BOSTON INNER HARBOR  
AT: FAN PIER  
COUNTY: SUFFOLK STATE: MA

SHEET 17 OF 19 DATE: 4/10/07



PURPOSE: CONSTRUCT NEW HARBOR WALK, FLOATING DOCK SYSTEM, WAVE ATTENUATOR, TIDAL PARK, & PIER, AND REPAIR SEAWALL

DATUM: BOSTON CITY BASE = 0.0'

CHILDS ENGINEERING CORPORATION  
BOX 333 MEDFIELD, MA. 02052

### PHASE 3 PLAN

150 75 0 150

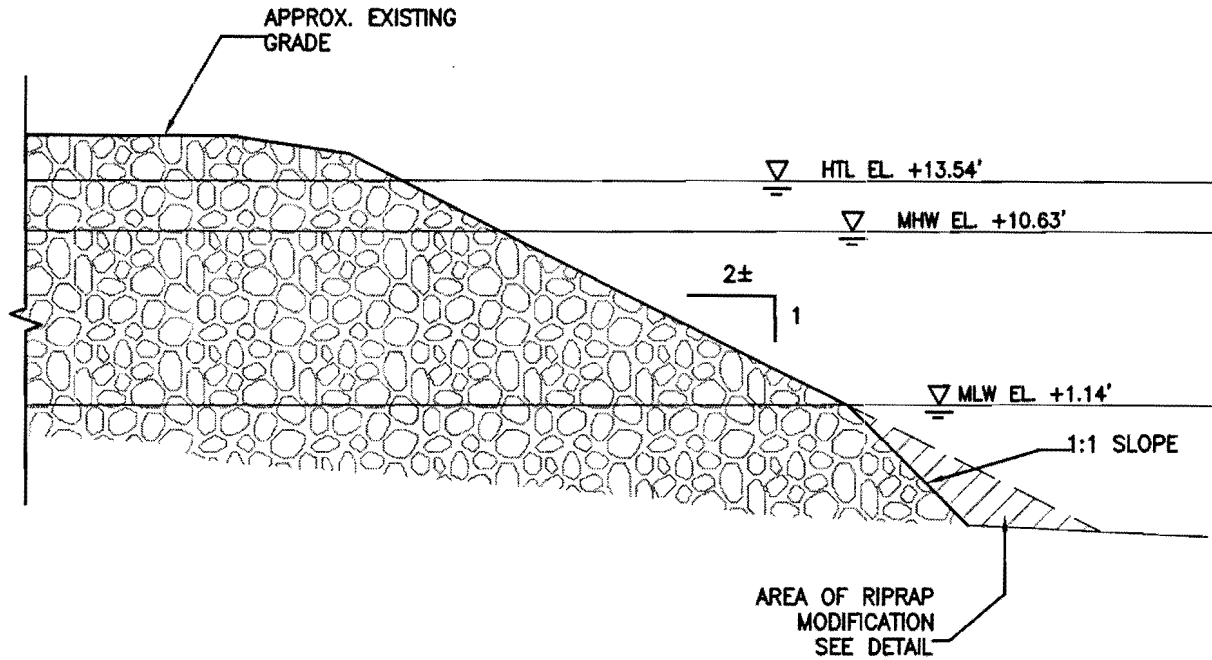
SCALE IN FEET

APPLICATION BY:  
FAN PIER DEVELOPMENT, LLC  
C/O THE FALLON COMPANY  
TWO SEAPORT LANE  
BOSTON, MA 02210

FAN PIER DEVELOPMENT PROJECT

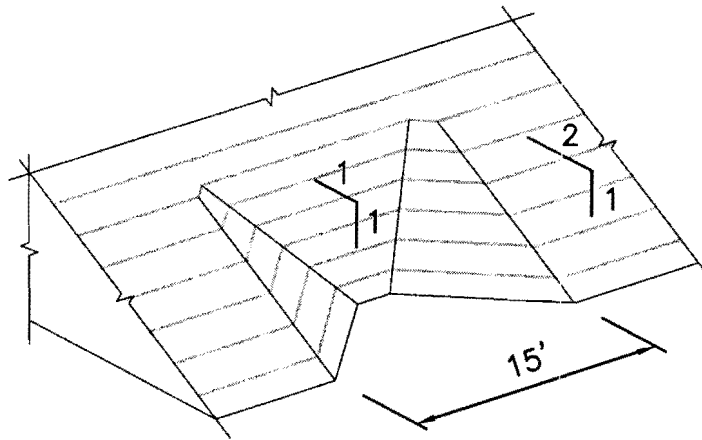
IN: BOSTON INNER HARBOR  
AT: FAN PIER  
COUNTY: SUFFOLK STATE: MA

SHEET 18 OF 19 DATE: 4/10/07



**AREA OF RRIPRAP MODIFICATION SECTION**

SCALE: 1"=10'-0"



**AREA OF RIPRAP MODIFICATION DETAIL**

SCALE: NONE

DATUM: BCB = 0.0'

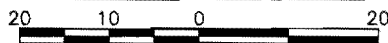
HTL = +13.54'  
 MHW = +10.63'  
 MSL = +6.00'  
 MTL = +5.88'  
 MLW = +1.14'

PURPOSE: CONSTRUCT NEW HARBOR WALK, FLOATING DOCK SYSTEM, WAVE ATTENUATOR, TIDAL PARK, & PIER, AND REPAIR SEAWALL

DATUM: BOSTON CITY BASE = 0.0'

CHILDS ENGINEERING CORPORATION  
 BOX 333 MEDFIELD, MA. 02052

**RIPRAP MODIFICATION**



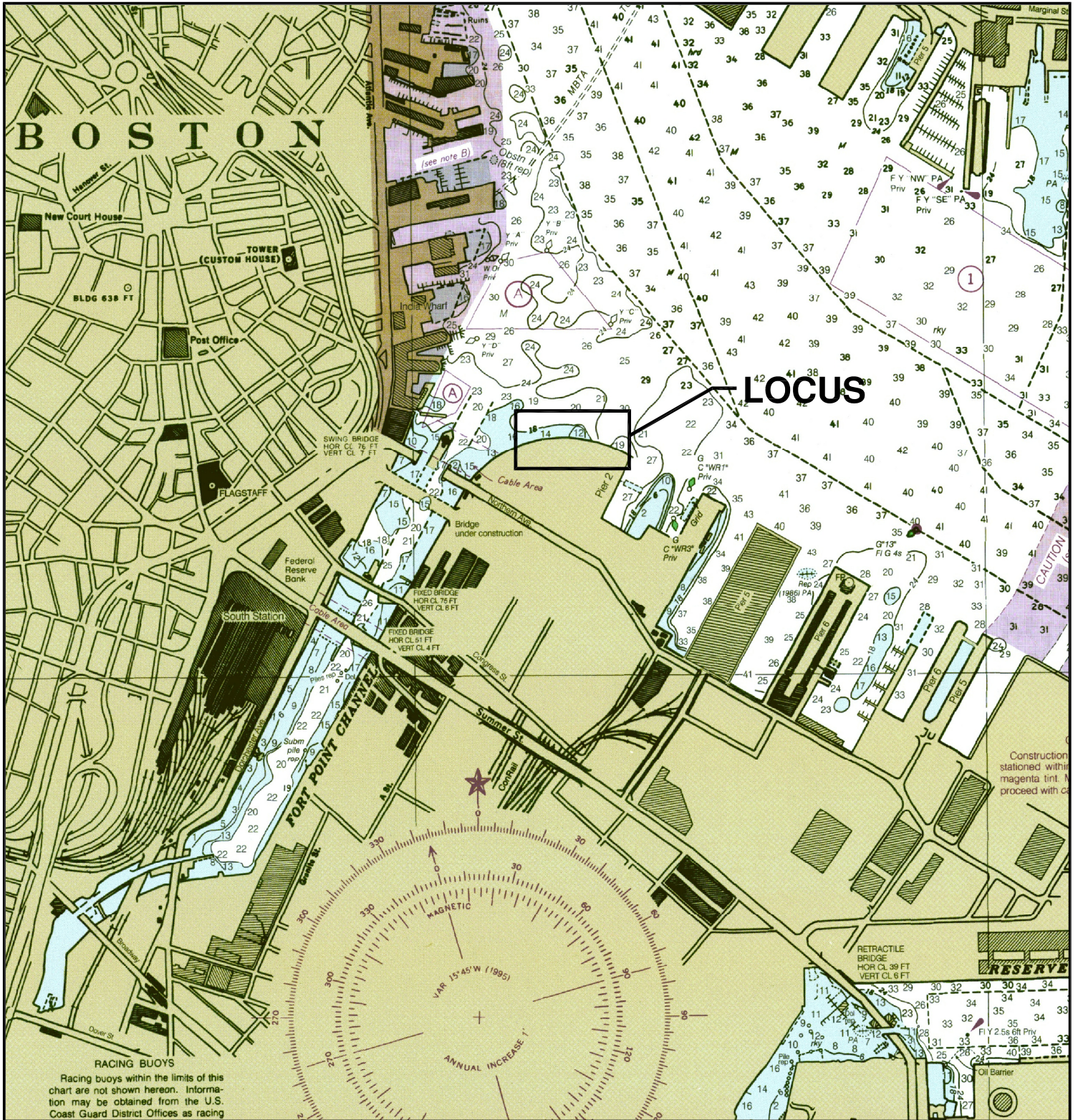
SCALE IN FEET

APPLICATION BY:  
 FAN PIER DEVELOPMENT, LLC  
 C/O THE FALLON COMPANY  
 TWO SEAPORT LANE  
 BOSTON, MA 02210

FAN PIER DEVELOPMENT PROJECT

IN: BOSTON INNER HARBOR  
 AT: FAN PIER  
 COUNTY: SUFFOLK STATE: MA

SHEET 19 OF 19 DATE: 4/10/07



PURPOSE: CONSTRUCT NEW  
STEEL PILE SUPPORTED TIMBER PIER

### VICINITY PLAN

SCALE: NONE

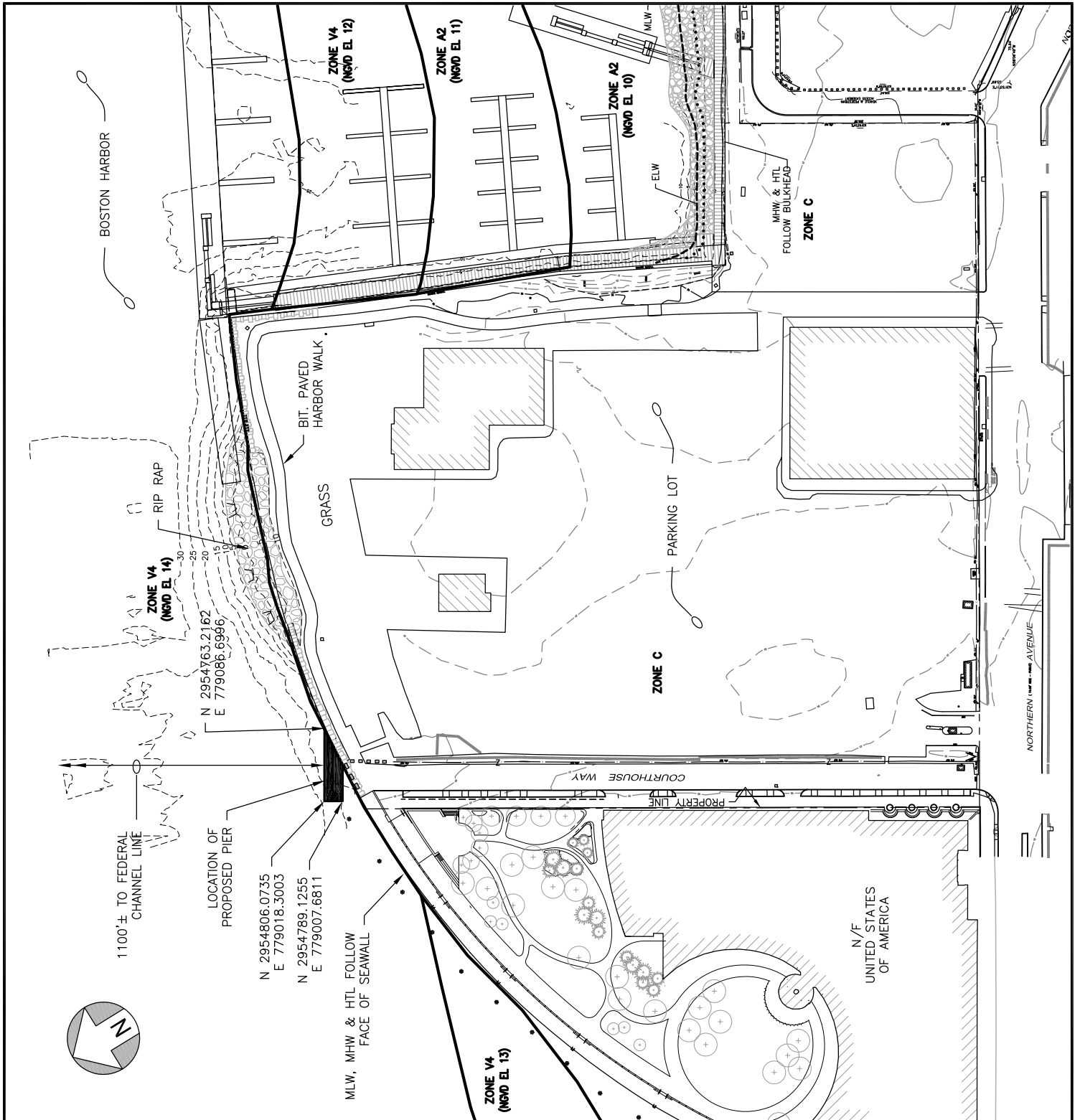
APPLICATION BY:  
FAN PIER DEVELOPMENT, LLC  
C/O THE FALLON COMPANY  
ONE MARINA PARK DRIVE  
BOSTON, MA 02210

CHILDS ENGINEERING CORPORATION  
34 WILLIAM WAY, BELLINGHAM, MA 02019

FAN PIER TIDAL PARK PROJECT

IN: BOSTON INNER HARBOR  
AT: FAN PIER  
COUNTY: SUFFOLK STATE: MA

SHEET 1 OF 5 DATE: 10/24/2013



PURPOSE: CONSTRUCT NEW  
STEEL PILE SUPPORTED TIMBER PIER

DATUM: NAVD 1988 = 0.0'

HTL = +7.13'

MHW = +4.32'

MLW = -5.17'

CHILDS ENGINEERING CORPORATION  
34 WILLIAM WAY, BELLINGHAM, MA 02019

## SITE PLAN

150 75 0 150

SCALE IN FEET

APPLICATION BY:  
FAN PIER DEVELOPMENT, LLC  
C/O THE FALLON COMPANY  
ONE MARINA PARK DRIVE  
BOSTON, MA 02210

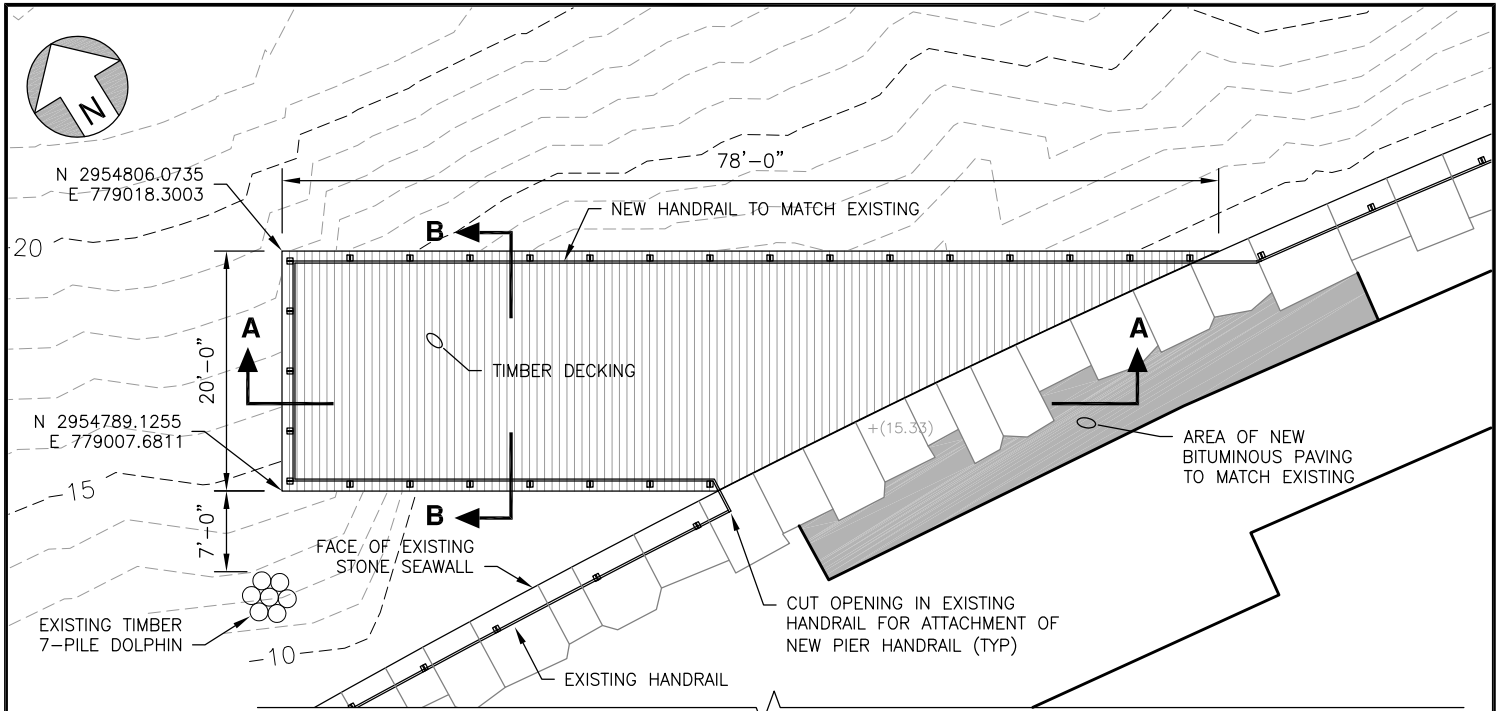
FAN PIER DEVELOPMENT PROJECT

IN: BOSTON INNER HARBOR

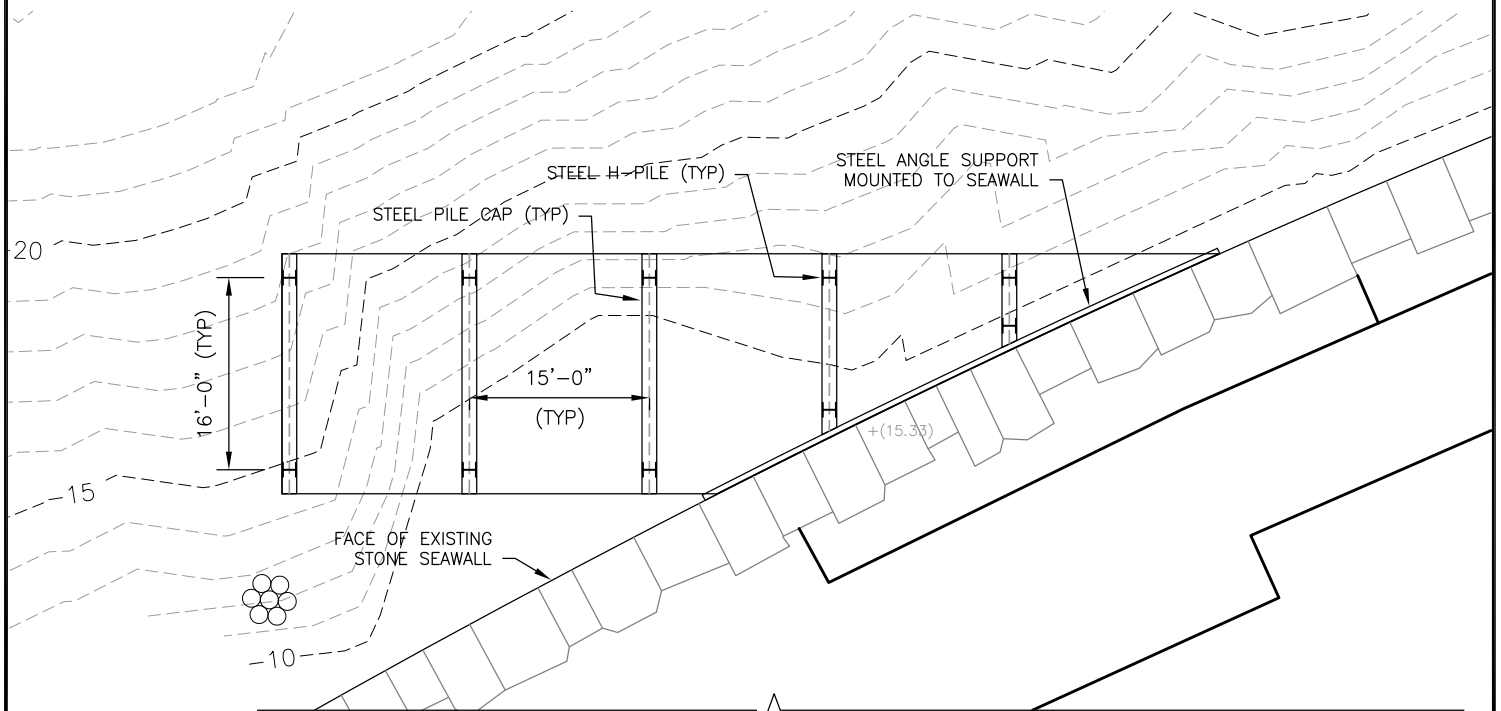
AT: FAN PIER

COUNTY: SUFFOLK STATE: MA

SHEET 2 OF 5 DATE: 10/24/2013



**DECK PLAN**



**PILE / PILE CAP PLAN**

PURPOSE: CONSTRUCT NEW  
STEEL PILE SUPPORTED TIMBER PIER

DATUM: NAVD 1988 = 0.0'

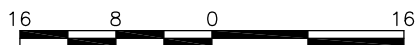
HTL = +7.13'

MHW = +4.32'

MLW = -5.17'

CHILDS ENGINEERING CORPORATION  
34 WILLIAM WAY, BELLINGHAM, MA 02019

**PROPOSED PLAN**



SCALE IN FEET

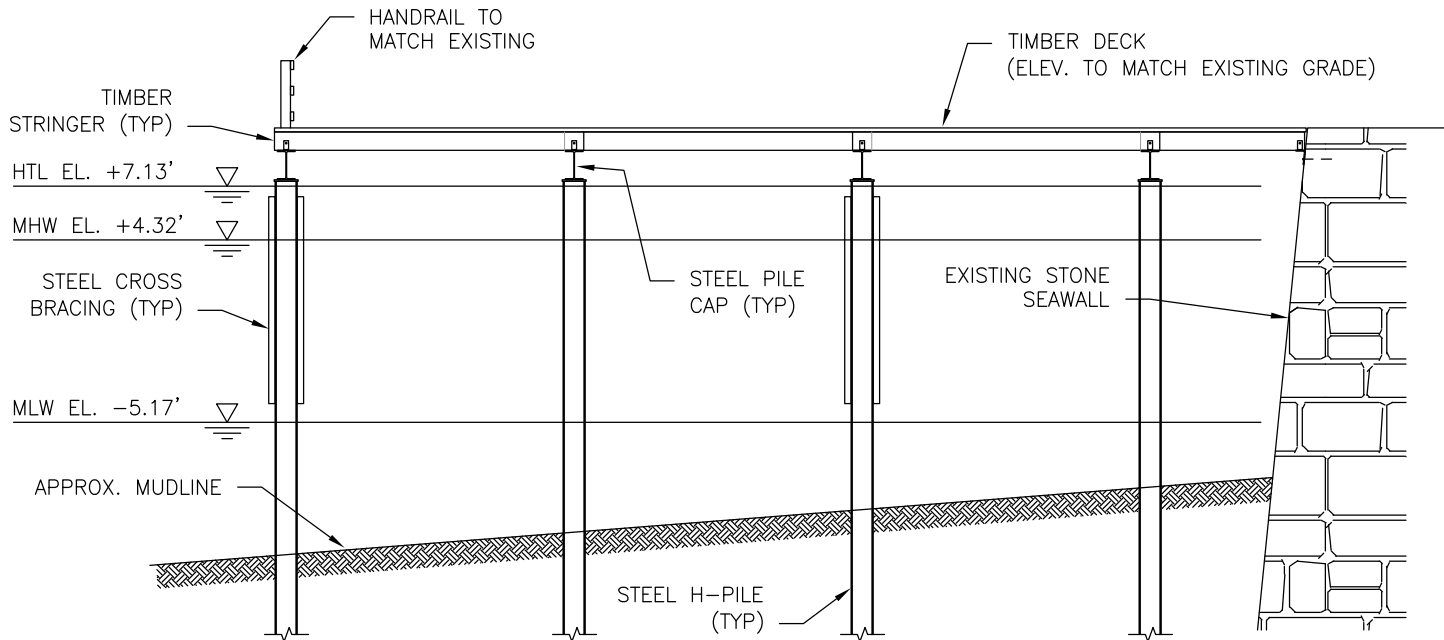
APPLICATION BY:  
FAN PIER DEVELOPMENT, LLC  
C/O THE FALLON COMPANY  
ONE MARINA PARK DRIVE  
BOSTON, MA 02210

FAN PIER DEVELOPMENT PROJECT

IN: BOSTON INNER HARBOR  
AT: FAN PIER  
COUNTY: SUFFOLK STATE: MA

SHEET 3 OF 5 DATE: 10/24/2013





**SECTION A-A**

SCALE: 1"=10'-0"

PURPOSE: CONSTRUCT NEW  
STEEL PILE SUPPORTED TIMBER PIER

DATUM: NAVD 1988 = 0.0'

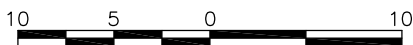
HTL = +7.13'

MHW = +4.32'

MLW = -5.17'

CHILDS ENGINEERING CORPORATION  
34 WILLIAM WAY, BELLINGHAM, MA 02019

**SECTION A-A**



SCALE IN FEET

APPLICATION BY:  
FAN PIER DEVELOPMENT, LLC  
C/O THE FALLON COMPANY  
ONE MARINA PARK DRIVE  
BOSTON, MA 02210

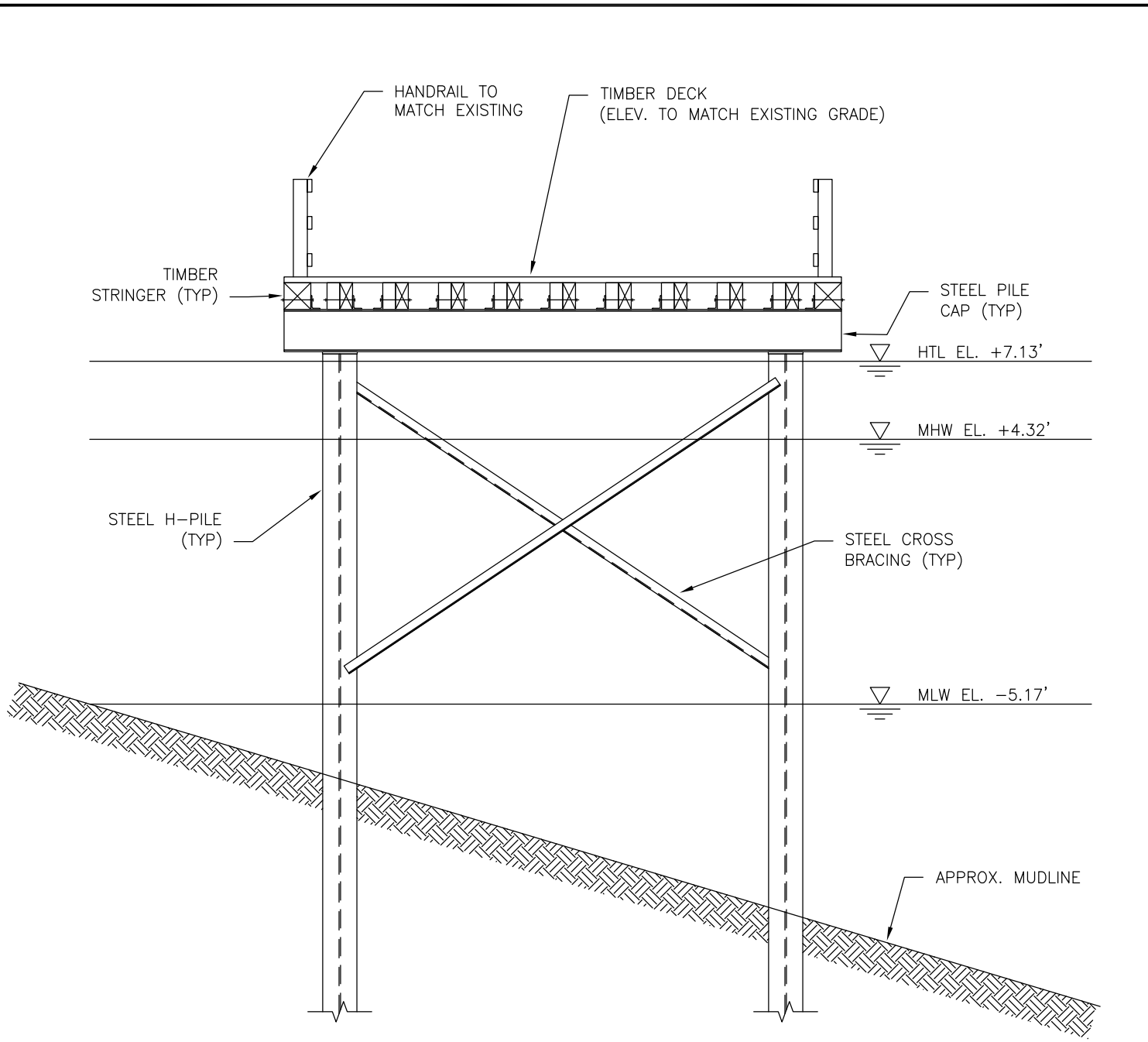
FAN PIER DEVELOPMENT PROJECT

IN: BOSTON INNER HARBOR

AT: FAN PIER

COUNTY: SUFFOLK STATE: MA

SHEET 4 OF 5 DATE: 10/24/2013



**SECTION B-B**

SCALE: 3/16"=1'-0"

PURPOSE: CONSTRUCT NEW  
STEEL PILE SUPPORTED TIMBER PIER

DATUM: NAVD 1988 = 0.0'

HTL = +7.13'

MHW = +4.32'

MLW = -5.17'

CHILDS ENGINEERING CORPORATION  
34 WILLIAM WAY, BELLINGHAM, MA 02019

**SECTION B-B**



SCALE OF FEET

APPLICATION BY:  
FAN PIER DEVELOPMENT, LLC  
C/O THE FALLON COMPANY  
ONE MARINA PARK DRIVE  
BOSTON, MA 02210

FAN PIER DEVELOPMENT PROJECT

IN: BOSTON INNER HARBOR  
AT: FAN PIER  
COUNTY: SUFFOLK STATE: MA

SHEET 5 OF 5 DATE: 10/24/2013