



**US Army Corps  
of Engineers**  
New England District

**Maine Project Office**  
442 Civic Center Drive, Suite 350  
Augusta, Maine 04351

# PUBLIC NOTICE

**Date:** JULY 23, 2019  
**Comment Period Ends:** AUGUST 22, 2019  
**File Number:** NAE-2019-01433  
**In Reply Refer To:** Jay L. Clement  
**Or by e-mail:** jay.l.clement@usace.army.mil

## 30 DAY NOTICE

The District Engineer has received a permit application from the applicant below to **conduct work in waters of the United States** as described below.

**APPLICANT: DEPARTMENT OF THE NAVY, 574 WASHINGTON STREET, BATH, MAINE 04530**

**ACTIVITY:** The applicant is seeking a 10-year permit in order to conduct periodic maintenance dredging of portions of the Kennebec River federal channel in order to facilitate the movement of U.S. naval ships constructed at Bath Iron Works (BIW) in and out of the river. Based on historic shoaling rates and current and projected Navy shipbuilding schedules at BIW, maintenance dredging is anticipated to be needed and performed at about three year intervals. However, there may be occasions when, depending on ship movements and unanticipated shoaling, that dredging may occur more frequently. The first maintenance dredging event will occur during the winter of 2019/2020.

Up to 80,000 cubic yards (cy) of predominantly sand would be periodically dredged from two locations that are prone to shoaling and have been dredged repeatedly in the past by the Corps of Engineers. Up to 50,000 cy will be dredged off Doubling Point, within a 45 acre area to a depth of -32' mllw and disposed of in-river, off Bluff Head. At the river mouth, up to 20,000 cy will be dredged within a 31 acre area to a depth of -29' mllw and disposed of in the vicinity of Jackknife Ledge. Actual quantities may vary depending on the frequency and degree of shoaling. The in-river disposal site is located just south of Bluff Head in about 95-100 feet of water. The Jackknife Ledge site is located about 0.4 nautical miles south of Jackknife Ledge and in about 40-50 feet of water. Both disposal sites have been used repeatedly for similar dredging conducted by the Corps of Engineers and at the Bluff Head site, also by Bath Iron Works. Dredging would be conducted by hopper dredge and/or mechanical dredge.

**WATERWAY AND LOCATION OF THE WORK:** Kennebec River; Bath & Phippsburg, Maine. The project is located at latitude 43.896126°N; and longitude -69.810770°W, on the USGS BATH, ME quadrangle sheet (Doubling Point Site - Bath), and at latitude 43.749292°N; and longitude -69.778277°W, on the USGS SMALL POINT, ME quadrangle sheet (Popham Beach Site - Phippsburg).

### **AUTHORITY:**

A permits was required pursuant to:

- Section 10 of the Rivers and Harbors Act of 1899
- Section 404 of the Clean Water Act
- Section 103 of the Marine Protection, Research and Sanctuaries Act).

The decision whether to issue a permit is based on an evaluation of the probable impact of the proposed activity on the public interest. That decision will reflect the national concern for both protection and utilization of important resources. The benefit which may reasonably accrue from the proposal must be balanced against its reasonably foreseeable detriments. All factors which may be relevant to the proposal will be considered, including the cumulative effects thereof; among those are: conservation, economics, aesthetics, general environmental concerns, wetlands, cultural value, fish and wildlife values, flood hazards, flood plain value, land use, navigation, shoreline erosion and accretion, recreation, water supply and conservation, water quality, energy needs, safety, food production and, in general, the needs and welfare of the people.

The Corps of Engineers is soliciting comments from the public; Federal, state, and local agencies and officials; Indian Tribes; and other interested parties in order to consider and evaluate the impacts of this proposed activity. Any comments received will be considered by the Corps of Engineers to determine whether to issue, modify, condition or deny a permit for this proposal. To make this decision, comments are used to assess impacts on endangered species, historic properties, water quality, general environmental effects, and the other public interest factors listed above. Comments are used in the preparation of an Environmental Assessment and/or an Environmental Impact Statement pursuant to the National Environmental Policy Act. Comments are also used to determine the need for a public hearing and to determine the overall public interest of the proposed activity.

Where the activity involves the discharge of dredged or fill material into waters of the United States or the transportation of dredged material for the purpose of disposing it in ocean waters, the evaluation of the impact of the activity in the public interest will also include application of the guidelines promulgated by the Administrator, U.S Environmental Protection Agency, under authority of Section 404(b) of the Clean Water Act, and/or Section 103 of the Marine Protection Research and Sanctuaries Act of 1972 as amended.

**ESSENTIAL FISH HABITAT & ENDANGERED SPECIES CONSULTATION:** The Magnuson-Stevens Fishery Conservation and Management Act, as amended by the Sustainable Fisheries Act of 1996 (Public Law 104-267), requires all federal agencies to consult with the National Marine Fisheries Service on all actions, or proposed actions, permitted, funded, or undertaken by the agency, that may adversely affect Essential Fish Habitat ("EFH").

Dredging and disposal activities will impact EFH for a variety of species and their various life stages. The habitat consists of subtidal river or ocean bottom composed primarily of sand and some silt. Impacts to the listed species include turbidity and benthic disturbance, however these impacts have been found to be generally minimal and of short duration. The Department of the Navy (DON) has initiated consultation with the National Marine Fisheries Service (NMFS). Although the DON has taken the lead in this consultation, the District Engineer has made the preliminary determination that the site-specific adverse effect will not be substantial. Further consultation with the NMFS regarding EFH is being conducted and will be addressed in the environmental documentation.

Similarly, the DON has initiated consultation with the National Marine Fisheries Service pursuant to Section 7 of the Endangered Species Act of 1973. The Kennebec River supports the federally endangered shortnose sturgeon, federally threatened Atlantic sturgeon, Atlantic sturgeon Critical Habitat (Gulf of Maine, New York Bight, and Chesapeake Bay DPS), and is within the range of the Gulf of Maine Distinct Population Segment ("DPS") of Atlantic salmon. Consultation with the NMFS will be concluded and will be addressed in the environmental documentation. Although the DON has taken the lead in this consultation, the District Engineer is hereby requesting that the appropriate Federal Agency also provide comments to the Corps regarding the presence of and potential impacts to listed species or critical habitat.

**SECTION 106 COORDINATION:** The DON has initiated consultation with the Maine Historic Preservation Commission and Maine's Indian Tribes pursuant to Section 106 of the National Historic Preservation Act of 1966 as amended. Although the DON has taken the lead in this consultation, the District Engineer has determined that the proposed work is not likely to affect properties listed in, or eligible for listing in, the National Register of Historic Places. The DON and the Corps will continue review and consultation to fulfill requirements under the Historic Preservation Act as part of the permit review process.


**OTHER APPROVALS:** The applicant has supplied the Maine Department of Environmental Protection (Maine DEP) with a permit application for the work described in this public notice and is requesting that the Department either grant or waive Water Quality Certification in accordance with Section 401 of the Clean Water Act. Comments regarding the applicant's Permit/Water Quality Certification request may be submitted in writing to: Nick Livesay, Director, Bureau of Land Resources, Department of Environmental Protection, 17 State House Station, Augusta, ME, 04333-0017 or by email to: [nick.livesay@maine.gov](mailto:nick.livesay@maine.gov)

In order to conclude our environmental documentation, we are seeking public comment. Anyone wishing to comment is encouraged to do so. **Comments should be submitted in writing by the above date.** If you have any questions, please contact Jay Clement at 207-623-8367, ext. 1 at our Augusta, Maine Project Office.

Any person may request, in writing, within the comment period specified in this notice, that a public hearing be held to consider the application. Requests for a public hearing shall specifically state the reasons for holding a public hearing. The Corps holds public hearings for the purpose of obtaining public comments when that is the best means for understanding a wide variety of concerns from a diverse segment of the public.

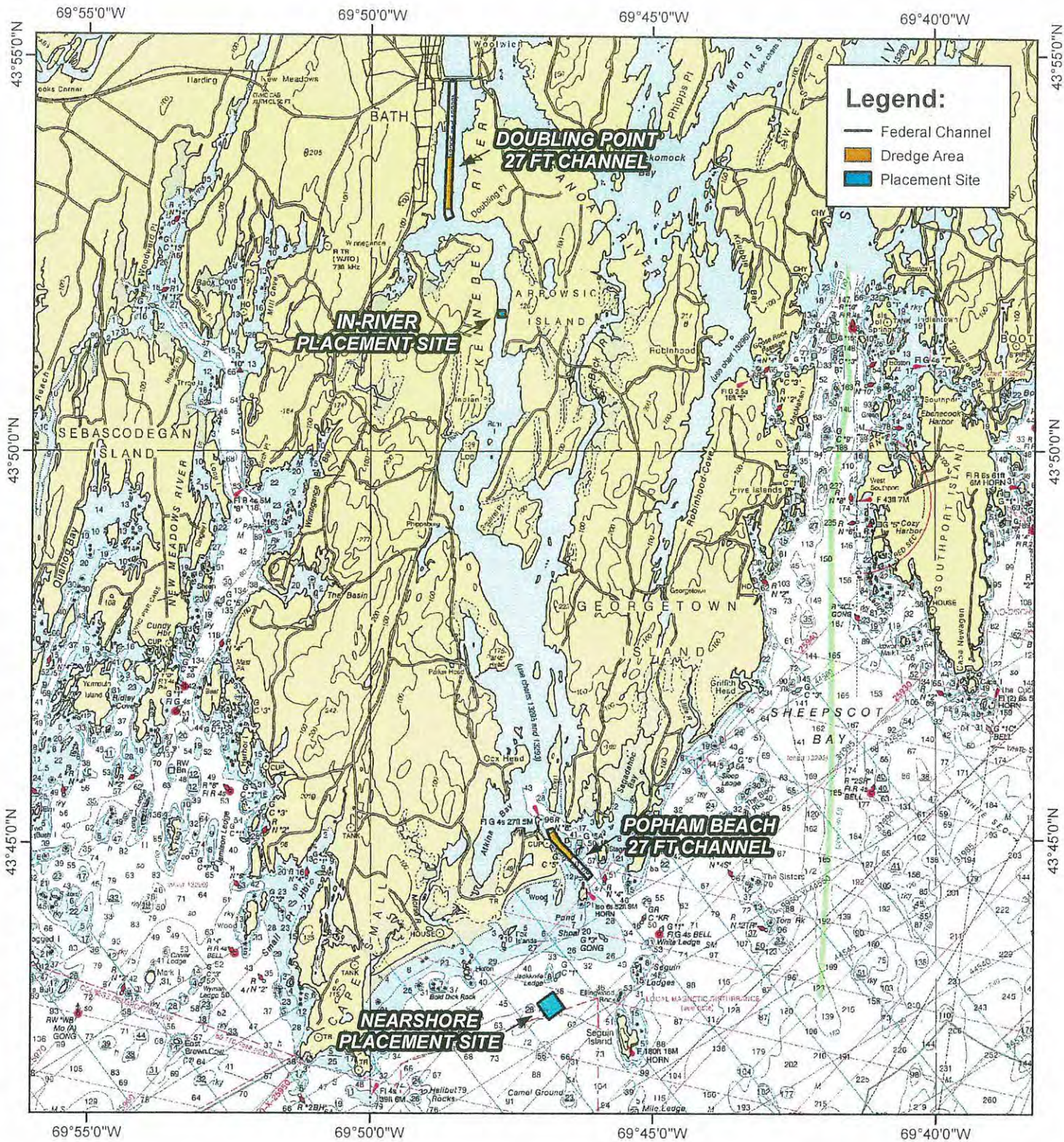
The initial determinations made herein will be reviewed in light of facts submitted in response to this notice. All comments will be considered a matter of public record. Should it be considered necessary, copies of letters of objection will be forwarded to the applicant who will normally be requested to contact objectors directly in an effort to reach an understanding.

For more information on the New England District Corps of Engineers programs, visit our website at <http://www.nae.usace.army.mil>.




  
**Frank J. Del Giudice**  
**Chief, Permits and Enforcement Branch**  
**Regulatory Division**

If you would prefer not to continue receiving Public Notices, please contact Ms. Tina Chaisson at (978) 318-8058 or e-mail her at [bettina.m.chaisson@usace.army.mil](mailto:bettina.m.chaisson@usace.army.mil). You may also check here ( ) and return this portion of the Public Notice to: Bettina Chaisson, Regulatory Division, U.S. Army Corps of Engineers, 696 Virginia Road, Concord, MA 01742-2751.

NAME: \_\_\_\_\_  
ADDRESS: \_\_\_\_\_



**Legend:**

-  Federal Channel
-  Dredge Area
-  Placement Site

**FIGURE 1:  
KENNEBEC RIVER  
DREDGING PROJECT OVERVIEW**



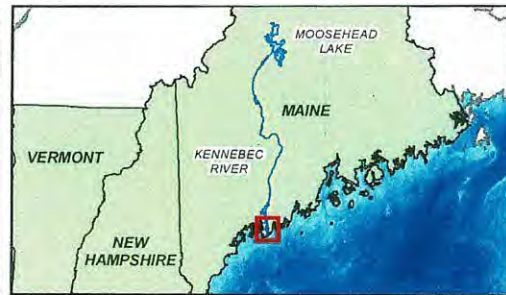
US Army Corps  
of Engineers  
New England District



NOAA CHART 13288

1:125,000

GCS NAD 1983



69°49'0"W

69°48'0"W

69°47'0"W




43°53'0"N

43°53'0"N

43°52'0"N

43°52'0"N

### Legend:

-  Federal Channel
-  Dredge Area
-  Placement Site

**DOUBLING POINT  
27 FT CHANNEL**

**IN-RIVER  
PLACEMENT SITE**

MAINTENANCE DREDGING - KENNEBEC RIVER  
 27-FOOT CHANNEL, DOUBLING POINT SHOAL  
 27-FOOT CHANNEL, POPHAM BEACH SHOAL  
 BATH AND PHIPPSBURG, MAINE

69°49'0"W

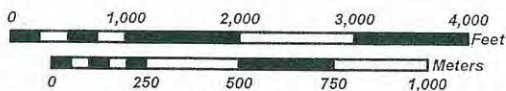
69°48'0"W

69°47'0"W



US Army Corps  
 of Engineers  
 New England District

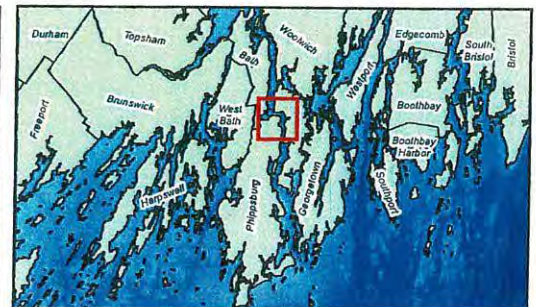
## KENNEBEC RIVER MAINTENANCE DREDGING DOUBLING POINT AND PLACEMENT SITE

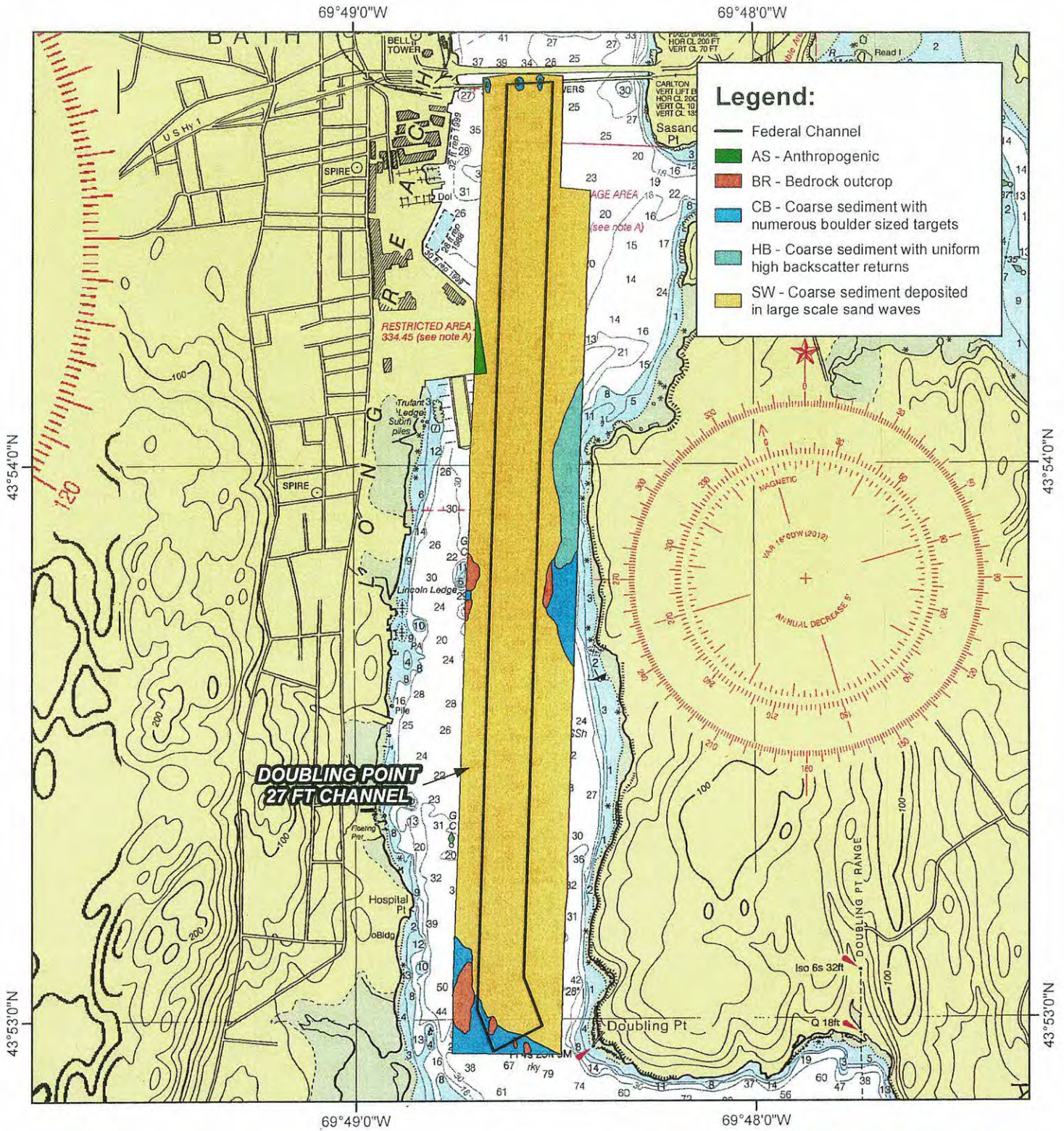


NOAA CHART 13296

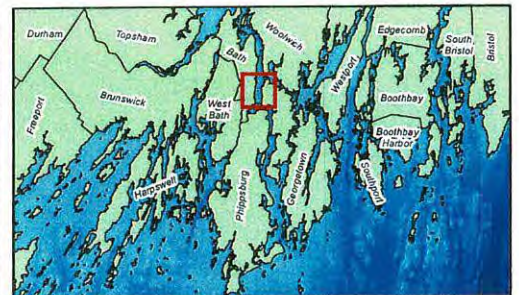
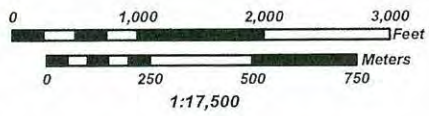
1:20,000

GCS NAD 1983



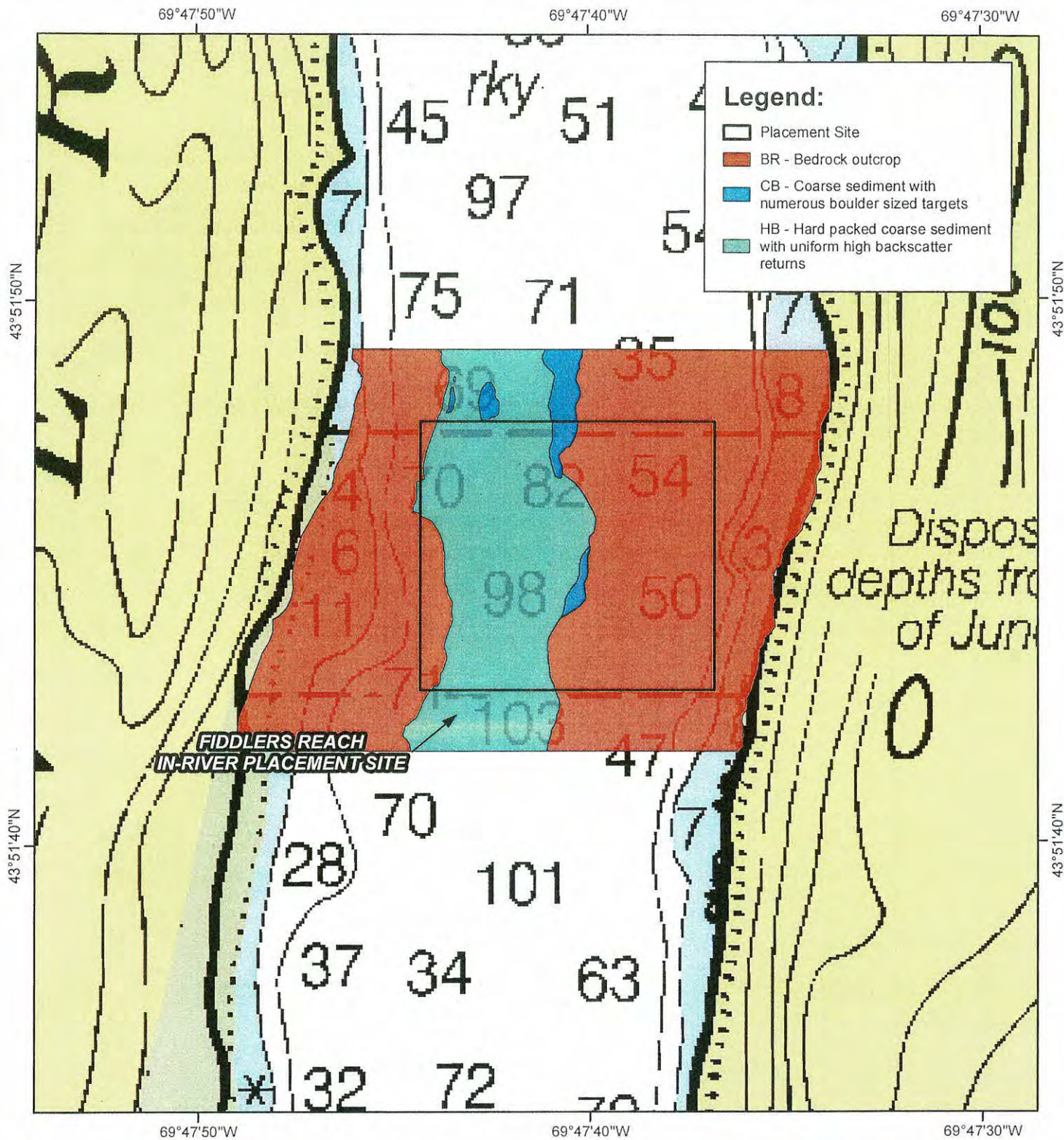


**FIGURE 9:**  
**KENNEBEC RIVER - DOUBLING POINT**  
**SIDE SCAN SONAR INTERPRETATION**

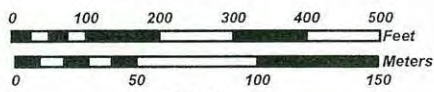


NOAA CHART 13296

GCS NAD 1983



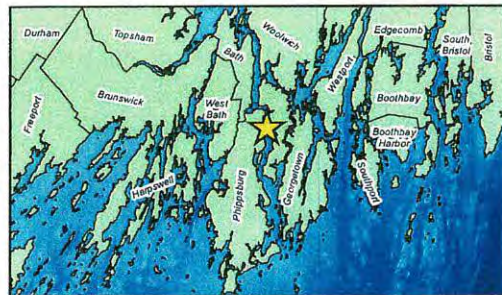
**FIGURE 11:**  
**KENNEBEC RIVER - FIDDLERS REACH**  
**SIDE SCAN SONAR INTERPRETATION**

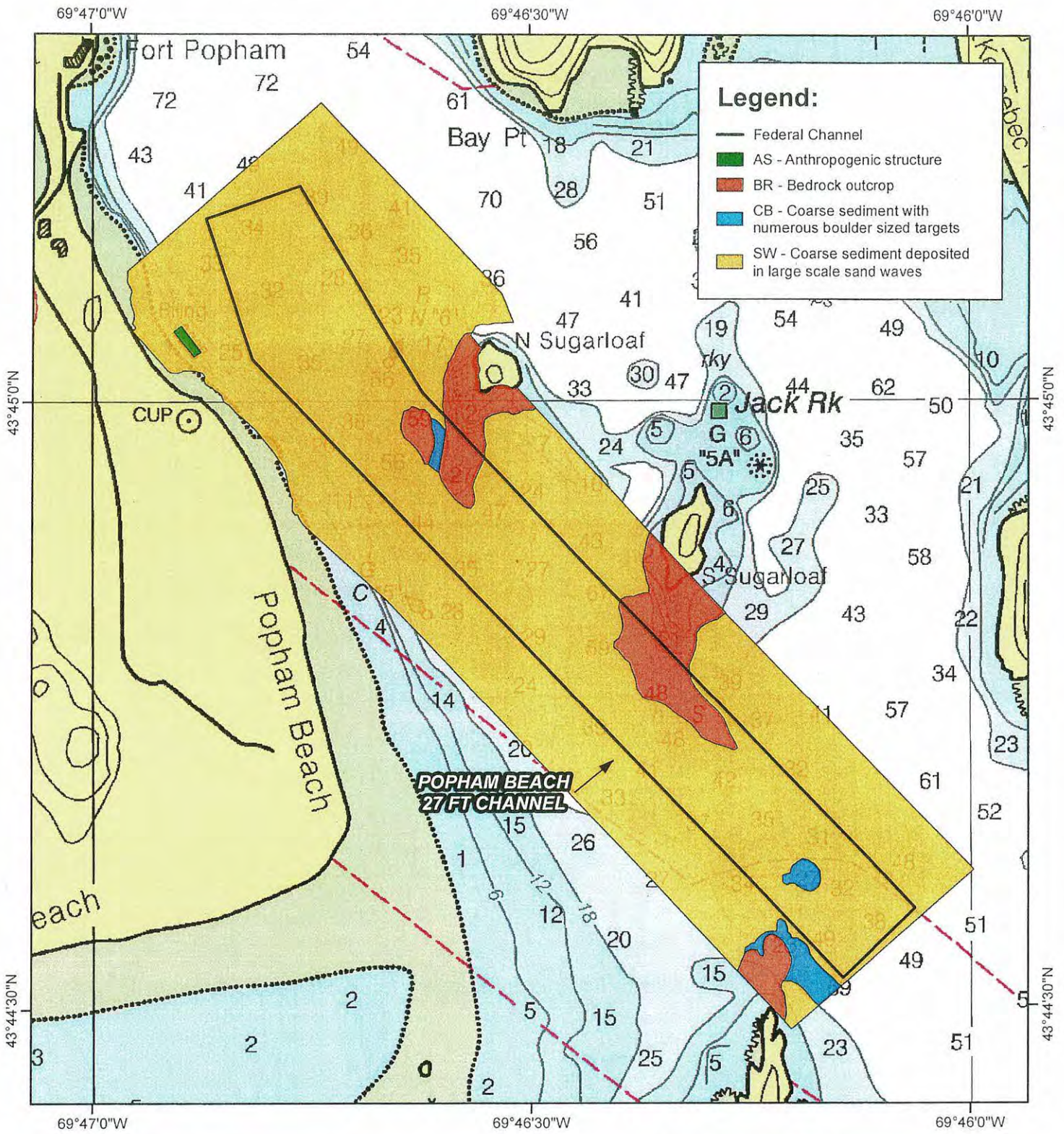


NOAA CHART 13296

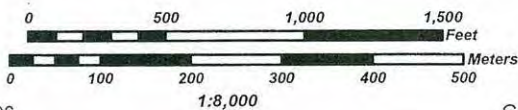
1:3,000

GCS NAD 1983



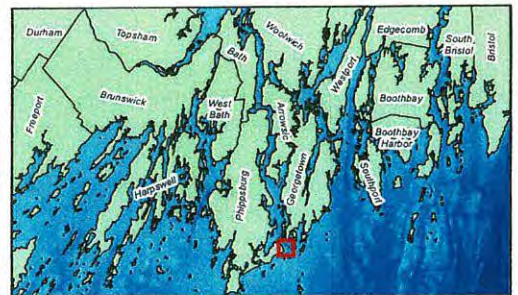


**FIGURE 10:**  
**KENNEBEC RIVER - POPHAM BEACH**  
**SIDE SCAN SONAR INTERPRETATION**



NOAA CHART 13296

GCS NAD 1983





69°48'0"W

69°47'0"W

69°46'0"W

69°45'0"W

43°45'0"N

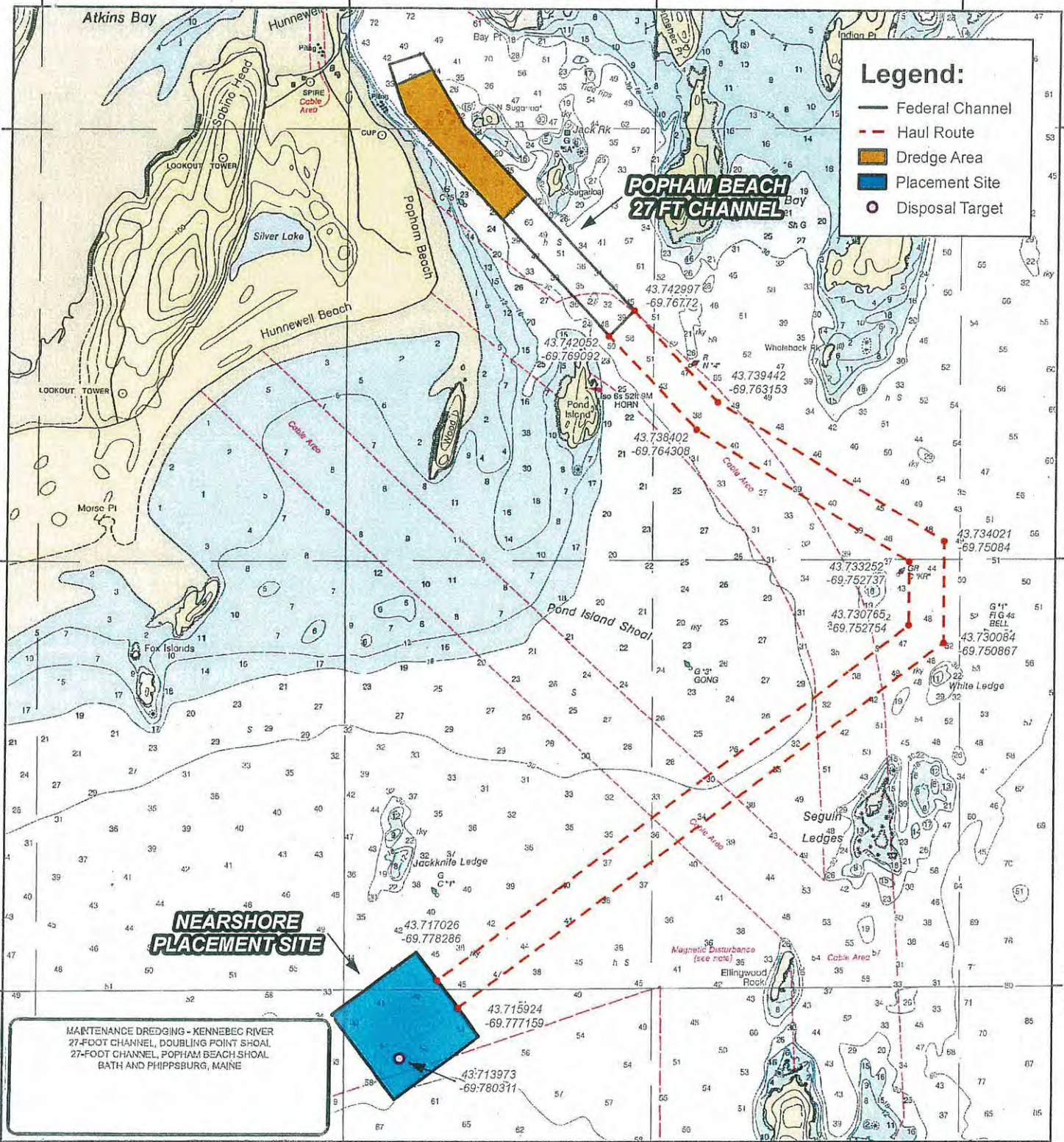
43°45'0"N

43°44'0"N

43°44'0"N

43°43'0"N

43°43'0"N



69°48'0"W

69°47'0"W

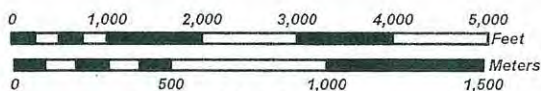
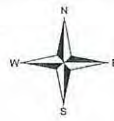
69°46'0"W

69°45'0"W



**KENNEBEC RIVER MAINTENANCE DREDGING  
POPHAM BEACH AND PLACEMENT SITE**

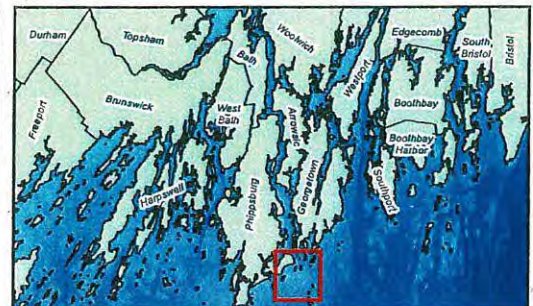
US Army Corps  
of Engineers  
New England District



NOAA CHART 13295

1:24,000

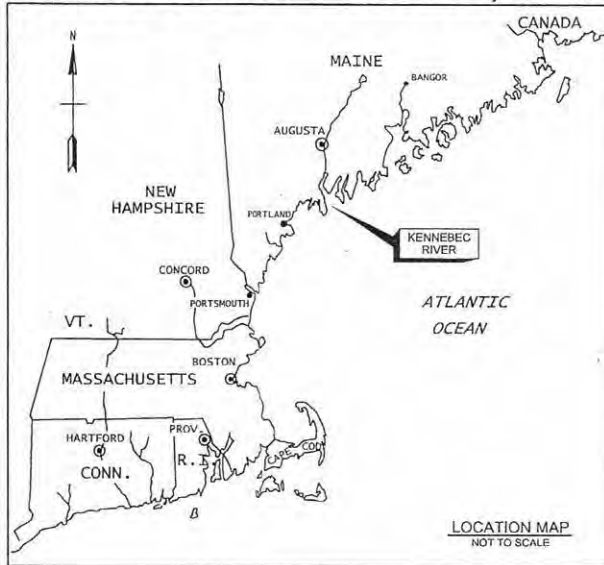
GCS NAD 1983





US Army Corps  
of Engineers®  
New England District

# MAINTENANCE DREDGING - KENNEBEC RIVER 27-FOOT CHANNEL, DOUBLING POINT SHOAL 27-FOOT CHANNEL, POPHAM BEACH SHOAL BATH AND PHIPPSBURG, MAINE



SOLICITATION NO.:  
CONTRACT NO.:  
ISSUE DATE:

DRAFT - NOT FOR CONSTRUCTION

INDEX TO DRAWINGS		
SHEET NO.	DESIGN FILE	SHEET TITLE
1	G-001 KEN_SP_2019_014_G-001.DGN	COVER SHEET AND INDEX
2	G-101 KEN_SP_2019_014_G-101.DGN	GENERAL PLAN, GENERAL NOTES, LEGEND, AND CHANNEL COORDINATES
3	C-101 KEN_SP_2019_014_C-101.DGN	PLAN - STA. 17+00 TO STA. 35+00
4	C-102 KEN_SP_2019_014_C-102.DGN	PLAN - STA. 35+00 TO STA. 62+00
5	C-103 KEN_SP_2019_014_C-103.DGN	PLAN - STA. 62+00 TO STA. 620+00
6	C-104 KEN_SP_2019_014_C-104.DGN	PLAN - STA. 620+00 TO STA. 645+00
7	C-105 KEN_SP_2019_014_C-105.DGN	PLAN - STA. 670+00 TO STA. 693+31
8	C-301 KEN_SP_2019_014_C-301.DGN	SECTIONS



US Army Corps  
of Engineers®

DATE	DESCRIPTION

DESIGNED BY:	ISSUE DATE:
DRAWN BY:	SOLICITATION NO.:
CHECKED BY:	CONTRACT NO.:
DRAWN BY:	ISSUE BY:
DATE:	DATE:
SCALE:	SHEET # OF #:
TITLE:	

U.S. ARMY CORPS OF ENGINEERS  
NEW ENGLAND DISTRICT  
CONCORD, MA 01742-7151

SIGNATURES AFFIXED BELOW INDICATE OFFICIAL RECOMMENDATION AND APPROVAL OF ALL DRAWINGS IN THIS SET AS INDEXED ON THIS SHEET

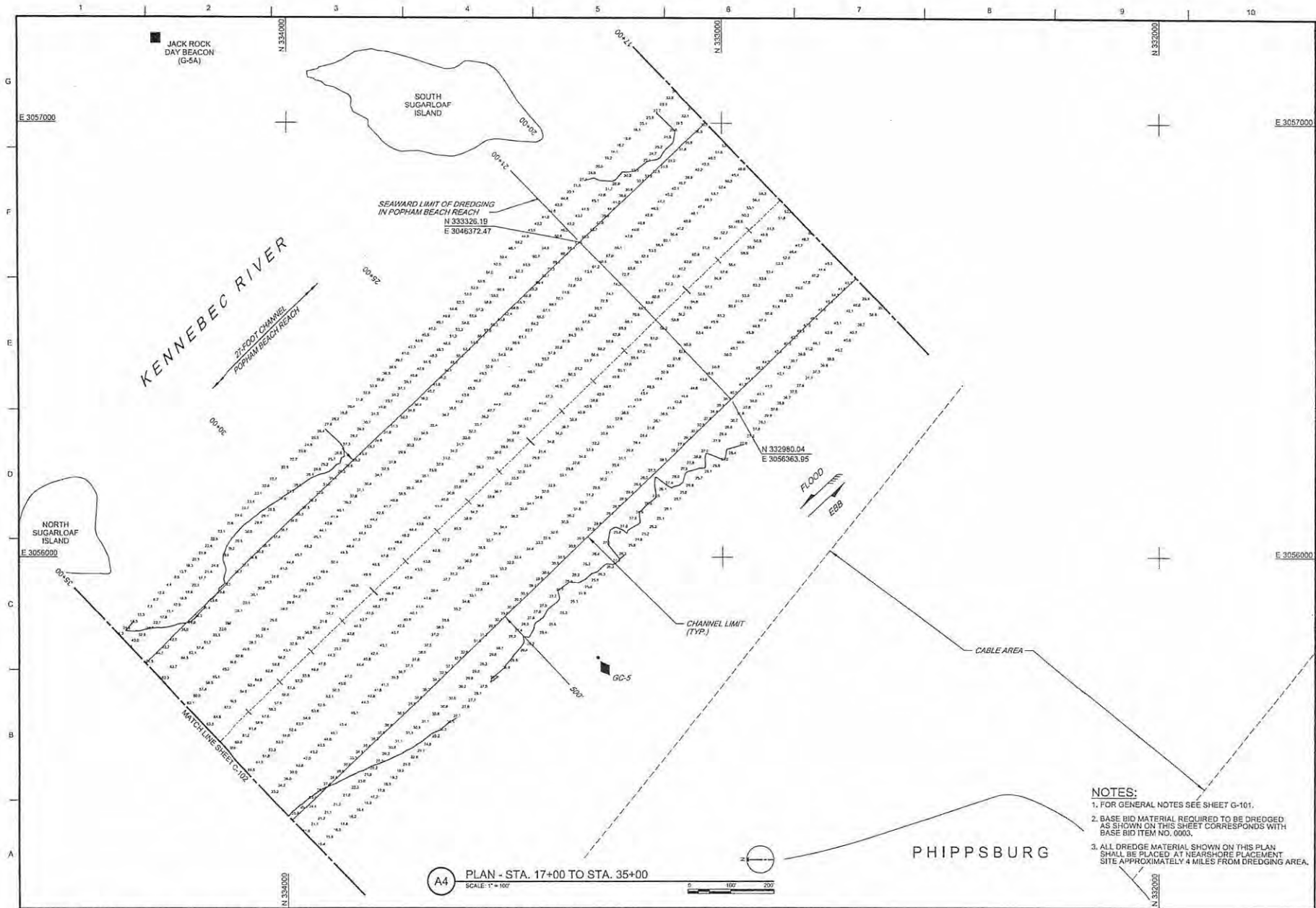
APPROVED FOR TECHNICAL ADEQUACY BY:	DATE
TECHNICAL LEAD ENGINEER	
REVIEWED BY:	DATE
CHIEF, SURVEY SECTION	
REVIEWED BY:	DATE
CHIEF, GEOTECHNICAL/WATER RESOURCES BRANCH	
REVIEWED BY:	DATE
CHIEF, GEO-ENVIRONMENTAL ENGINEERING BRANCH	
APPROVAL RECOMMENDED BY:	DATE
CHIEF, DESIGN BRANCH	
APPROVAL RECOMMENDED BY:	DATE
CHIEF, TECHNICAL SUPPORT BRANCH/DEPUTY CHIEF ENGN	
APPROVED BY:	DATE
CHIEF, ENGINEERING DIVISION	

MAINTENANCE DREDGING - KENNEBEC RIVER  
27-FOOT CHANNEL, DOUBLING POINT SHOAL,  
27-FOOT CHANNEL, POPHAM BEACH SHOAL,  
BATH AND PHIPPSBURG, MAINE  
COVER SHEET, LOCATION MAP AND  
INDEX TO DRAWINGS

SHEET ID  
G-001

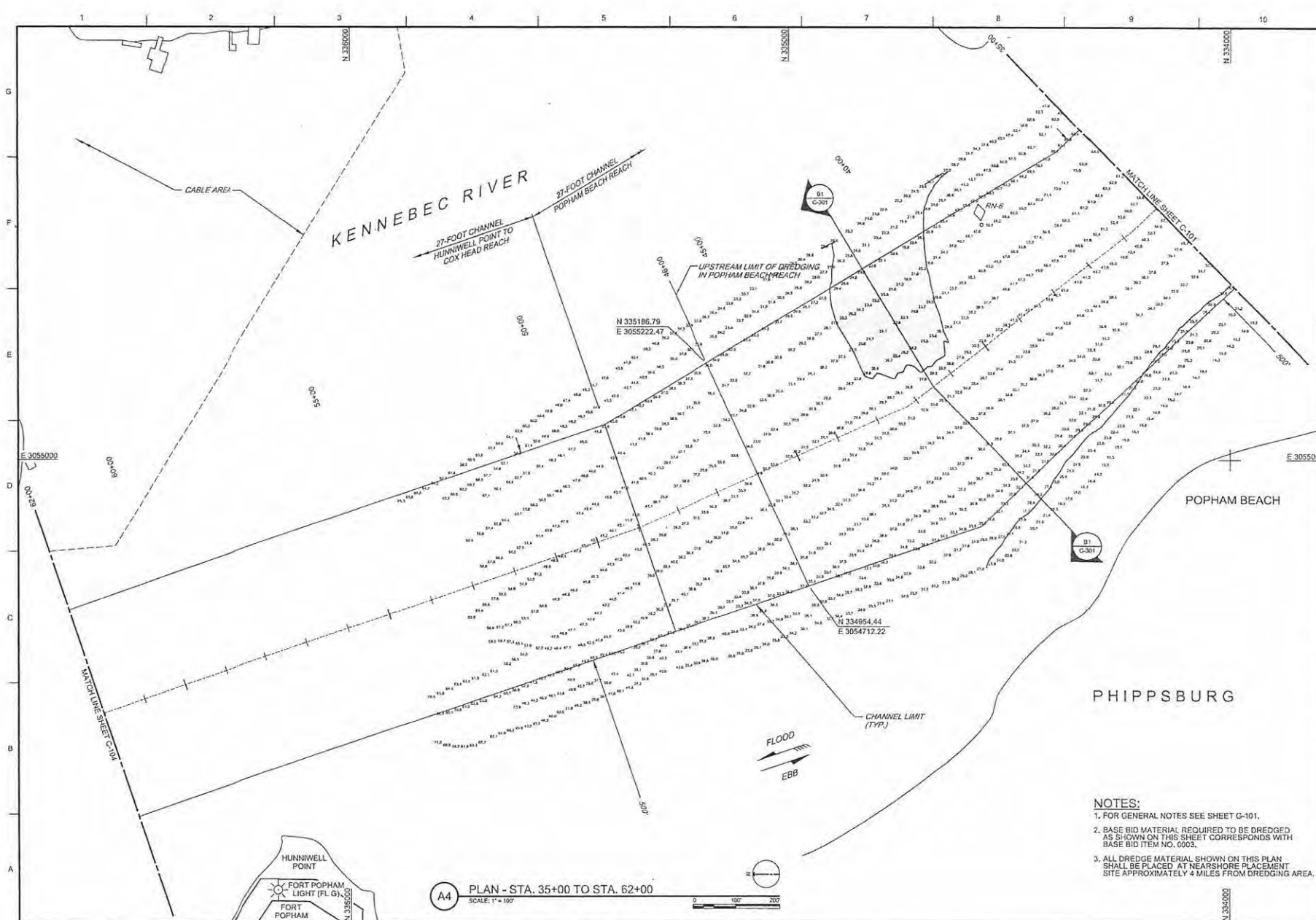
\\w:\COR\448\FWP\1\CON\ase.ds.usace.army.mil\coe-naepw\1\con\ase.ds.usace.army.mil\Documents\Civil Works\Navigation\ME\Kennebec River\Maintenance Dredging Popham Doubling (KEN\_SP\_2019\_014)\2020 - Planning & Engineering & Design\2020 - Plans & Specs\CAD\_BI  
1:50:43 PM 4/8/2019 PD: AEC\_gdf.plt DS: AEC\_Screen.dsc.plt





- NOTES:**
1. FOR GENERAL NOTES SEE SHEET G-101.
  2. BASE BID MATERIAL REQUIRED TO BE DREDGED AS SHOWN ON THIS SHEET CORRESPONDS WITH BASE BID ITEM NO. 0003.
  3. ALL DREDGE MATERIAL SHOWN ON THIS PLAN SHALL BE PLACED AT NEARSHORE PLACEMENT SITE APPROXIMATELY 4 MILES FROM DREDGING AREA.

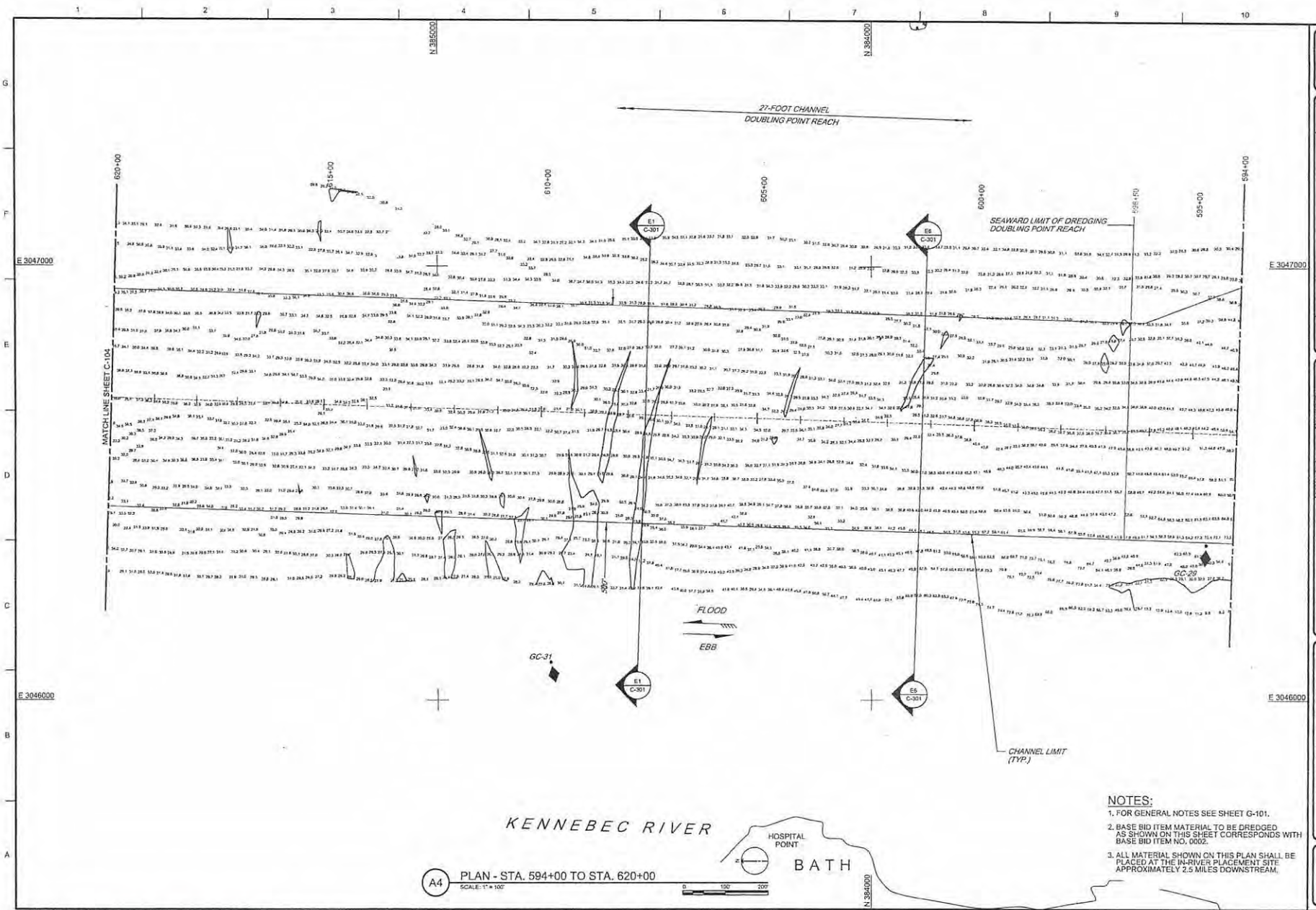
 <b>US Army Corps of Engineers</b>	
DESIGNED BY: U.S. ARMY CORPS OF ENGINEERS REGIONAL OFFICE 555 VIRGINIA ROAD CONCORD, MA 01742-2511	CHECKED BY: U.S. ARMY CORPS OF ENGINEERS REGIONAL OFFICE 555 VIRGINIA ROAD CONCORD, MA 01742-2511
PROJECT NO.: 17-000	CONTRACT NO.: W17-000
DRAWING NO.: C-101	SHEET NO.: 3 OF 8
SCALE: 1" = 100'	DATE: 11/14/19
SHEET ID: <b>C-101</b>	PRELIMINARY



**A4** PLAN - STA. 35+00 TO STA. 62+00  
SCALE: 1" = 100'

- NOTES:**
1. FOR GENERAL NOTES SEE SHEET G-101.
  2. BASE BID MATERIAL REQUIRED TO BE DREDGED AS SHOWN ON THIS SHEET CORRESPONDS WITH BASE BID ITEM NO. 0003.
  3. ALL DREDGE MATERIAL SHOWN ON THIS PLAN SHALL BE PLACED AT NEARSHORE PLACEMENT SITE APPROXIMATELY 4 MILES FROM DREDGING AREA.

US Army Corps of Engineers	
ISSUE DATE:	DATE:
DESIGNED BY:	MARK:
CHECKED BY:	DESCRIPTION:
APPROVED BY:	
PROJECT NO.:	
CONTRACT NO.:	
DRAWING CODE:	
SHEET NO. OF TOTAL SHEETS:	
SCALE:	
ANILED:	
U.S. ARMY CORPS OF ENGINEERS NEW ENGLAND DISTRICT CONCORD, MA 01733	
MAINTENANCE AGREEMENT NUMBER: 04-1 27-FOOT CHANNEL, POPHAM BEACH SHOALS PHIPPSBURG, MAINE	
PLAN - STA. 35+00 TO STA. 62+00	
SHEET ID	
<b>C-102</b>	



A4 PLAN - STA. 594+00 TO STA. 620+00  
SCALE: 1" = 100'

- NOTES:**
- FOR GENERAL NOTES SEE SHEET G-101.
  - BASE BID ITEM MATERIAL TO BE DREDGED AS SHOWN ON THIS SHEET CORRESPONDS WITH BASE BID ITEM NO. 0002.
  - ALL MATERIAL SHOWN ON THIS PLAN SHALL BE PLACED AT THE IN-RIVER PLACEMENT SITE APPROXIMATELY 2.5 MILES DOWNSTREAM.



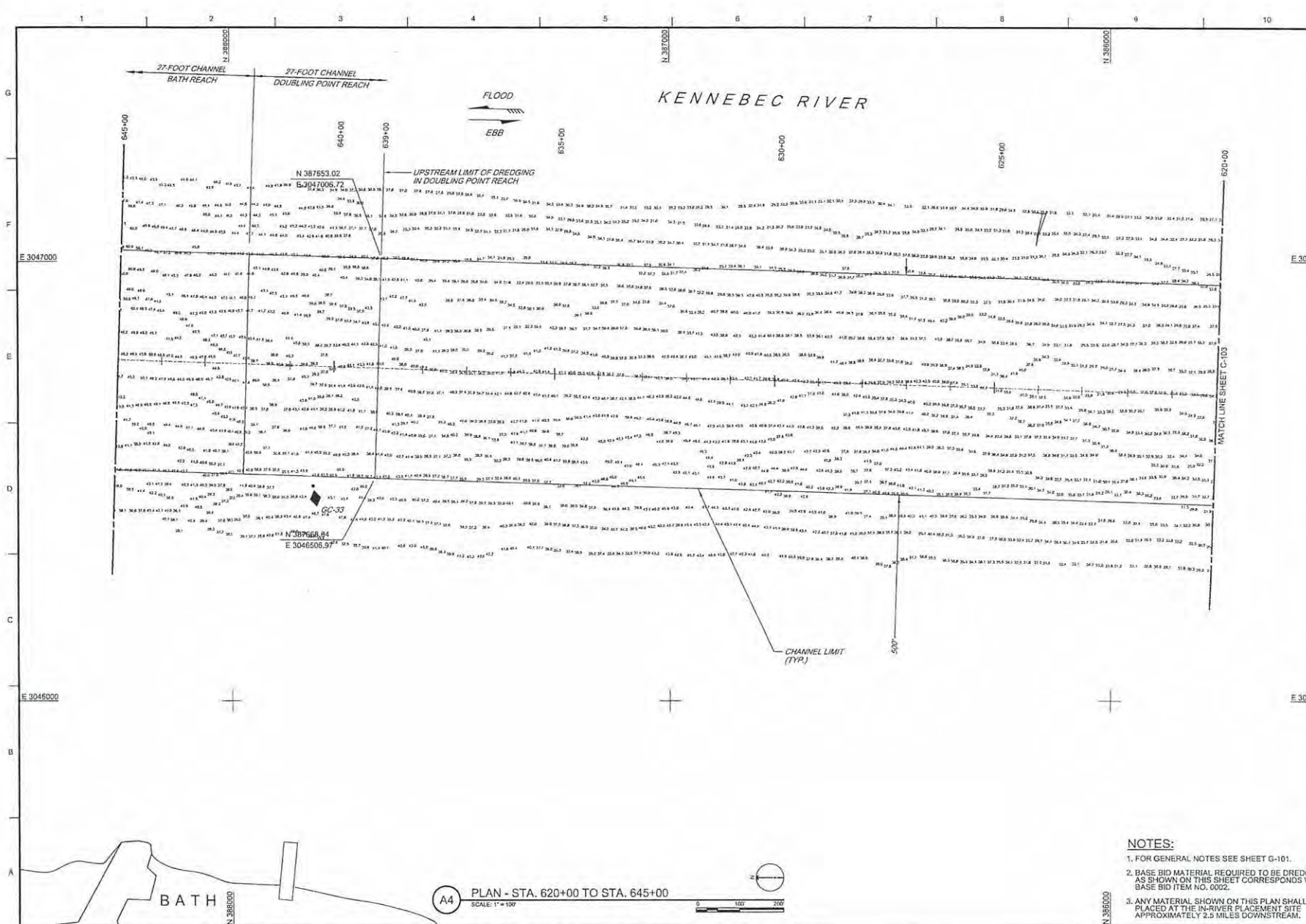
DATE	REVISION	MARK	DESCRIPTION

DESIGNED BY:	ISSUE DATE:
DRAWN BY:	SUBMITTER:
CHECKED BY:	SCALE:
DATE:	NO. OF SHEETS:
PROJECT NO.:	PROJECT NAME:
CONTRACT NO.:	CONTRACT TITLE:
CONTRACT DATE:	CONTRACT VALUE:
CONTRACT LOCATION:	CONTRACT DESCRIPTION:

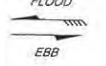
U.S. ARMY CORPS OF ENGINEERS  
 MAINTENANCE DREDGING - KENNEBEC RIVER  
 27-FOOT CHANNEL DOUBLING POINT REACH  
 BATH AND PIPPERING, MAINE  
 PLAN - STA. 594+00 TO STA. 620+00

SHEET ID  
**C-103**

PRELIMINARY

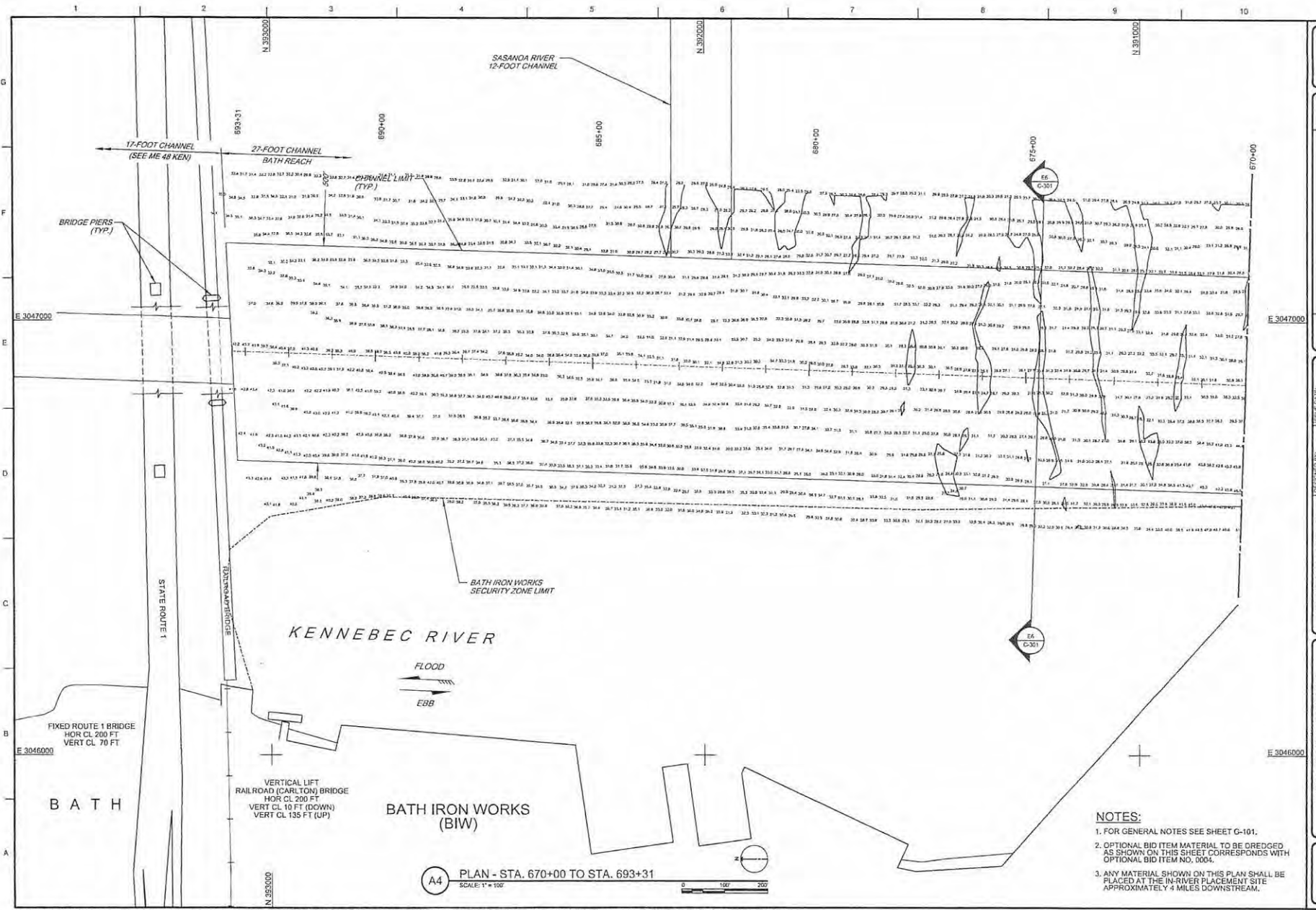


KENNEBEC RIVER



- NOTES:**
- FOR GENERAL NOTES SEE SHEET G-101.
  - BASE BID MATERIAL REQUIRED TO BE DREDGED AS SHOWN ON THIS SHEET CORRESPONDS WITH BASE BID ITEM NO. 0002.
  - ANY MATERIAL SHOWN ON THIS PLAN SHALL BE PLACED AT THE IN-RIVER PLACEMENT SITE APPROXIMATELY 2.5 MILES DOWNSTREAM.

<p>US Army Corps of Engineers</p>	
<p>DESIGNED BY: L. WALKER</p> <p>DRAWN BY: D. BERRY</p> <p>CHECKED BY: D. BERRY</p> <p>SCALE: 1" = 100'</p>	<p>ISSUE DATE: NOV 2019</p> <p>SUBMITTER NO: NEW ENGLAND DISTRICT CONTRACT NO: CONCORD MA 03 02 0251</p> <p>DRAWING CODE: SHEET 8 OF 10</p>
<p>U.S. ARMY CORPS OF ENGINEERS NEW ENGLAND DISTRICT CONCORD MA 03 02 0251</p>	
<p>MAINTENANCE OPERATIONS - KENNEBEC RIVER 27-FOOT CHANNEL DOUBLING POINT SHOUL BATH CHANNEL DOUBLING POINT SHOUL BATH CHANNEL DOUBLING POINT SHOUL</p>	
<p>PLAN - STA. 620+00 TO STA. 645+00</p>	
<p>SHEET ID</p> <p style="font-size: 24pt; font-weight: bold;">C-104</p>	



MARK	DESCRIPTION	DATE

DESIGNED BY:	ISSUE DATE:
DRAWN BY:	EXECUTION NO.:
CHECKED BY:	CONTRACT NO.:
DATE:	DRAWING CODE:
SCALE:	REV. NO.:
PROJECT:	SHEET # OF #

U.S. ARMY CORPS OF ENGINEERS  
 116 664 VIRGINIA ROAD  
 CONCORD, MA 01742-9151

MAINTENANCE DREDGING - KENNEBEC RIVER  
 17-FOOT CHANNEL, PUPHAM BEACH SHOALS,  
 BATH AND PARRISBURG, MAINE

PLAN - STA. 670+00 TO STA. 693+31

SHEET ID  
**C-105**

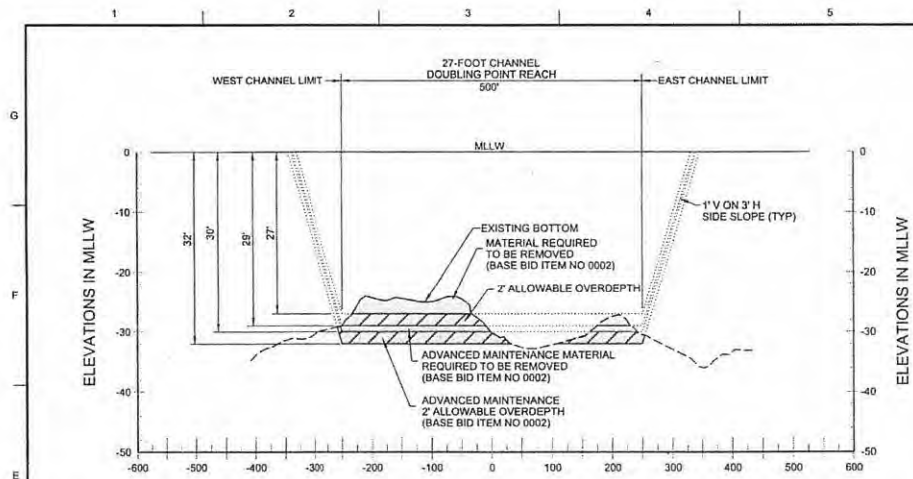
PRELIMINARY

- NOTES:**
- FOR GENERAL NOTES SEE SHEET G-101.
  - OPTIONAL BID ITEM MATERIAL TO BE DREDGED AS SHOWN ON THIS SHEET CORRESPONDS WITH OPTIONAL BID ITEM NO. 0004.
  - ANY MATERIAL SHOWN ON THIS PLAN SHALL BE PLACED AT THE IN-RIVER PLACEMENT SITE APPROXIMATELY 4 MILES DOWNSTREAM.

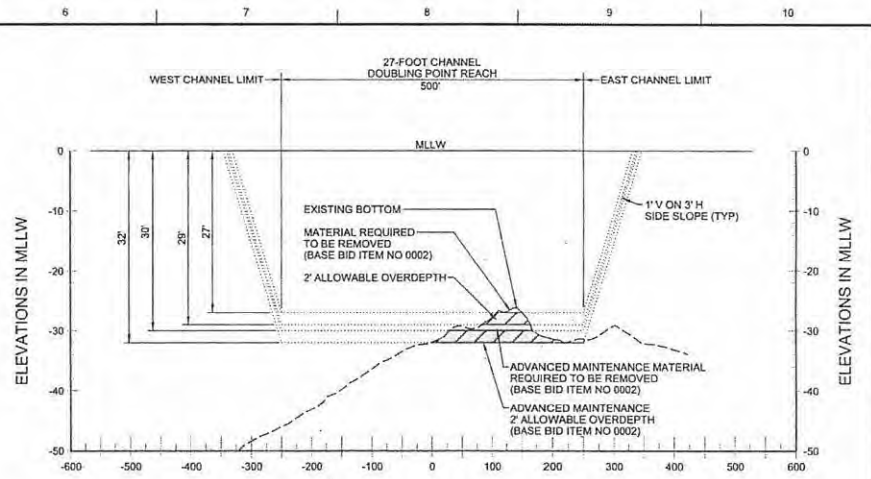
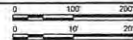
**A4** PLAN - STA. 670+00 TO STA. 693+31  
 SCALE: 1" = 100'

*THIS AREA NOT TO BE  
 DREDGED*

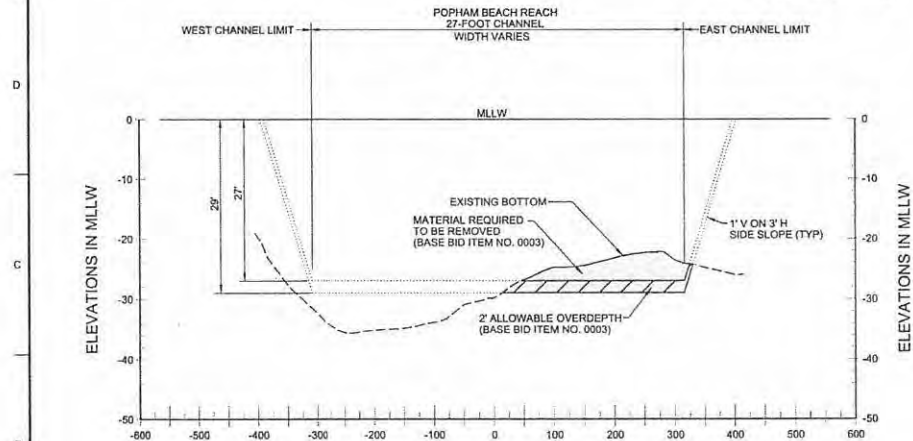
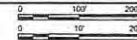




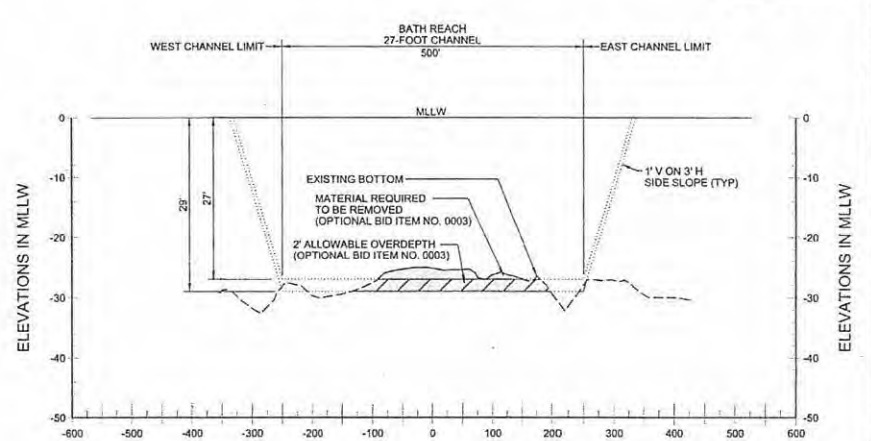
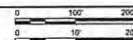
**E1** SECTION - DOUBLING POINT SHOAL  
SCALE: HOR. 1" = 100'  
VER. 1" = 10'



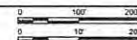
**E6** SECTION - DOUBLING POINT SHOAL  
SCALE: HOR. 1" = 100'  
VER. 1" = 10'




**B1** SECTION - POPHAM BEACH SHOAL  
SCALE: HOR. 1" = 100'  
VER. 1" = 10'



**E6** SECTION - BATH IRON WORKS SHOAL  
SCALE: HOR. 1" = 100'  
VER. 1" = 10'



NOT TO BE  
DREDGED



US Army Corps  
of Engineers®

DATE	MARK	DESCRIPTION

DESIGNED BY:	CHECKED BY:	SUBMITTED BY:	SCALE:	SHEET #	DATE
U.S. ARMY CORPS OF ENGINEERS NEW ORLEANS DISTRICT CONSTRUCTION DIVISION					

**SECTIONS**

PROJECT TITLE: 27-FOOT CHANNEL DOUBLING POINT SHOAL  
27-FOOT CHANNEL DOUBLING POINT SHOAL  
BATH IRON WORKS SHOAL

SHEET ID  
**C-301**

PRELIMINARY

BY: J.C.E. HAZEN AND COMPANY, INC. 1001 MARKET STREET, NEWTON, MASSACHUSETTS 02459-1500, TEL: 617/552-2200, FAX: 617/552-2201  
 2/15/11 PM 10:27 AM  
 PLOT FILE: P:\Projects\11000\11000.dwg  
 PLOT DATE: 2/15/11 10:27 AM  
 PLOT SCALE: 1" = 100'