

*Trail Courtesy & Safety are
your Responsibility*

Trail Users

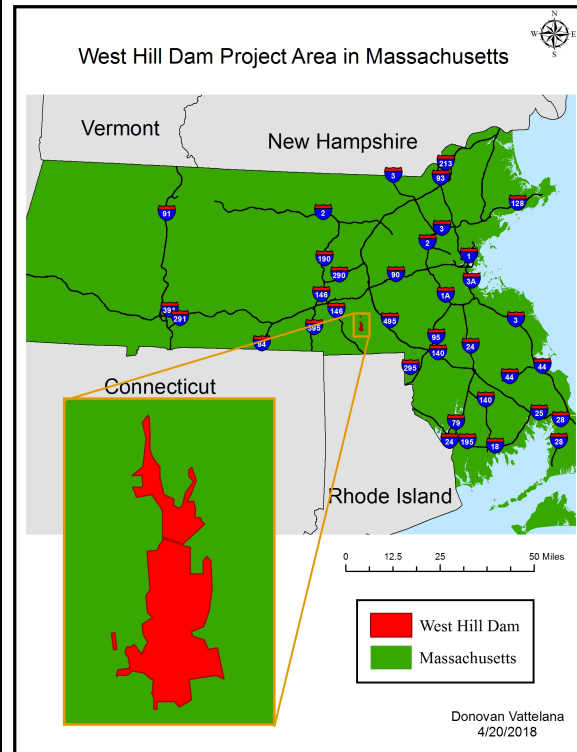
Follow rules &
regulations:



- Stay on appropriate trails
- Be alert for hazards
- Be Courteous
- Minimize your impact
- Properly dispose of trash (including dog waste)
- Wear safety orange during hunting season
- Don't disturb nature



*Take Only Pictures,
Leave Only Footprints.*



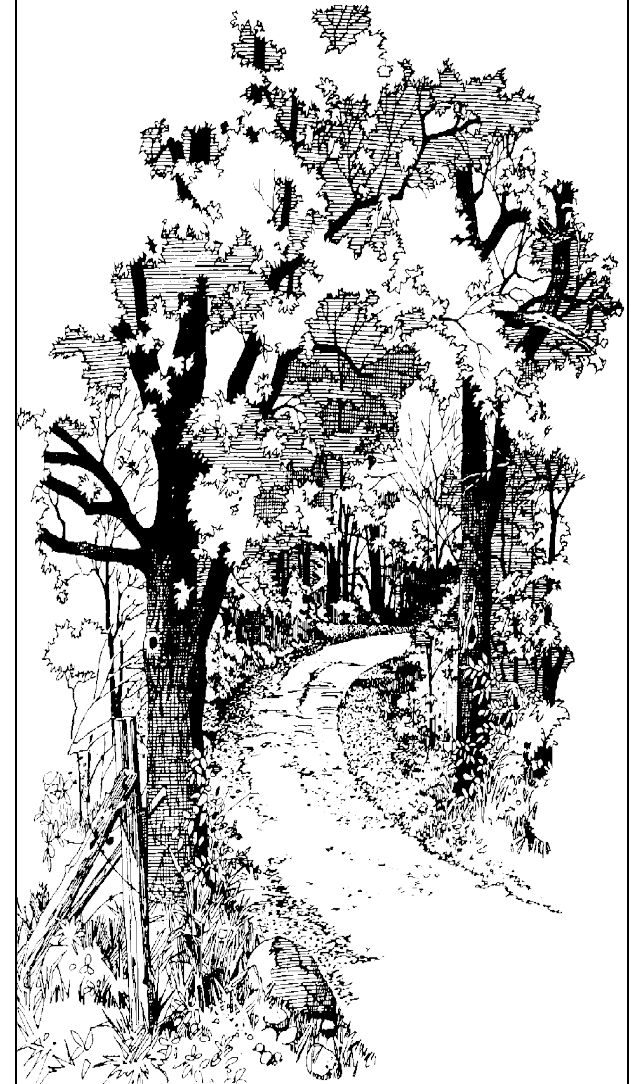
West Hill Dam
518 East Hartford Avenue
Uxbridge, MA 01569
(978) 318-8827

[http://www.nae.usace.army.mil/Missions/
Recreation/West-Hill-Dam/](http://www.nae.usace.army.mil/Missions/Recreation/West-Hill-Dam/)

West Hill Park
23 West Hill Road
Northbridge, MA 01534



**US Army Corps
of Engineers®**
New England District



*Nature Trails at
the West Hill Dam*



US Army Corps
of Engineers®
New England District



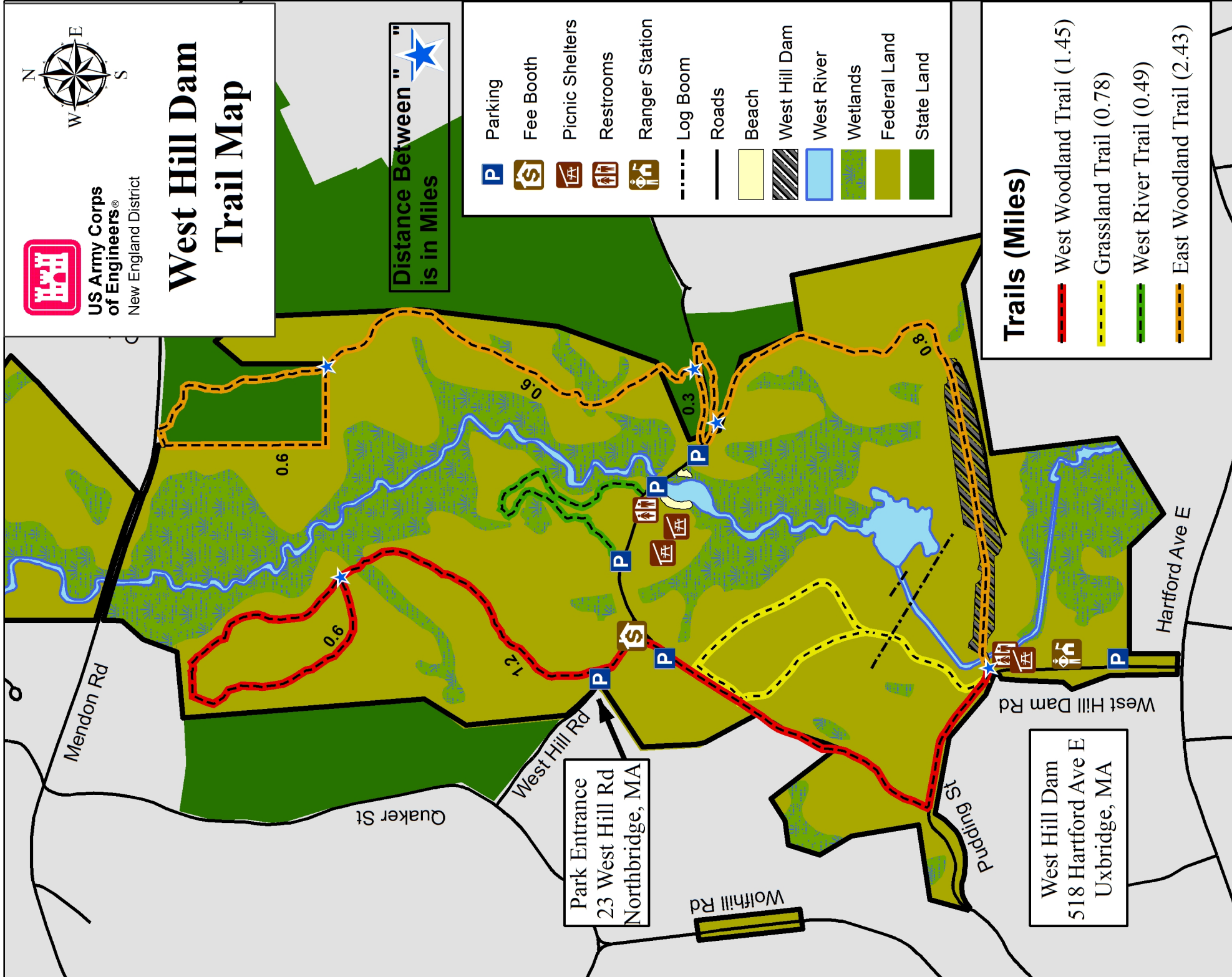
West Hill Dam Trail Map

Distance Between "*" is in Miles

- Parking
- Fee Booth
- Picnic Shelters
- Restrooms
- Ranger Station
- Log Boom
- Roads
- Beach
- West Hill Dam
- West River
- Wetlands
- Federal Land
- State Land

Trails (Miles)

- West Woodland Trail (1.45)
- Grassland Trail (0.78)
- West River Trail (0.49)
- East Woodland Trail (2.43)



Park Entrance
23 West Hill Rd
Northbridge, MA

West Hill Dam
518 Hartford Ave E
Uxbridge, MA

