

Gand Trunk Trail at Five Bridge Road

East Brimfield Dam

Siog Recreation Area

## General Information

1. Trail courtesy requires bicycle riders to yield to hikers. Be sure to be mindful of other trail users.
2. Bicycle riders should always ride at a safe controlled speed, and alert other trail users when overtaking. Helmets should be worn at all times. Please stay on the trails.
3. Caution: Water sources are not tested for purity. Do not drink water from any of the area streams.
4. For more information on trail safety, contact the East Brimfield Lake Project Office. See reverse for contact information.
5. There is a brochure available for descriptions and maps for the recreational opportunities within the East Brimfield project.

## Emergency Phone Numbers

### EMERGENCY 911

#### FIRST AID

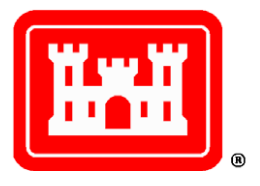
The park staff is trained to provide First Aid and CPR.

**NOTICE:** All persons entering upon government property do so at their own risk. The United States assumes no responsibility for their loss or injury from the acts or conduct of other person on the premises.

### Thank you for visiting!

East Brimfield Dam is operated by the US Army Corps of Engineers. Our trained staff is here to assist you, and we welcome your comments and suggestions.

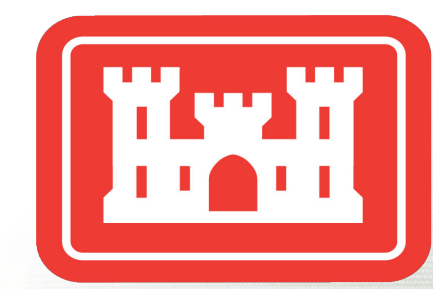
This pamphlet provides you with general information and park rules that will ensure a pleasant and safe visit for all. Please check bulletin boards for more information.



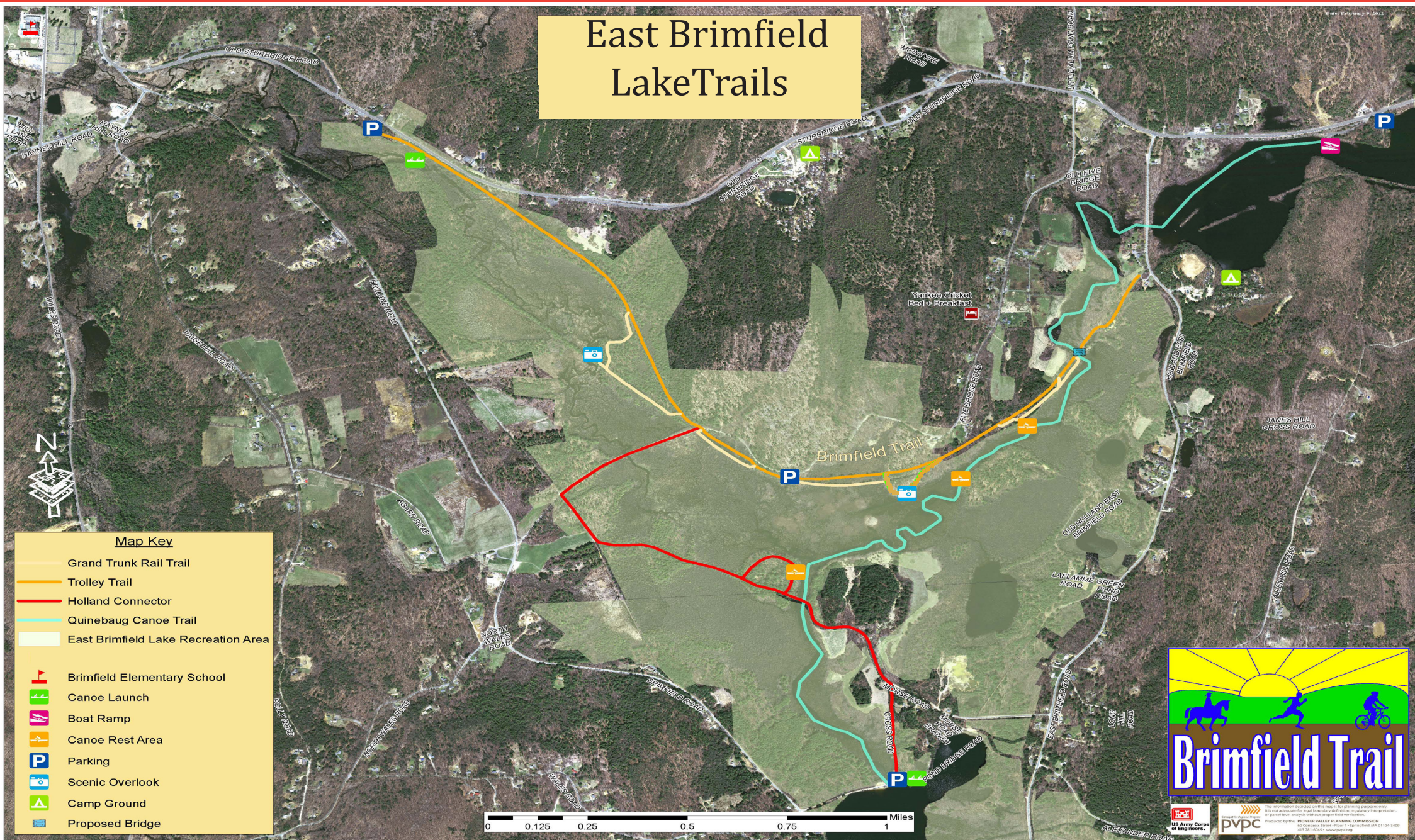
**Five Bridge Road Grand Trunk Trail Parking**  
207 Five Bridge Road  
Brimfield, MA

**Grand Trunk Trail Parking Lot**  
120 Sturbridge Road (Rt 20)  
Brimfield, MA

For more information, contact:  
**U.S. Army Corps of Engineers**  
**East Brimfield Lake Office**  
24 Riverview Ave  
Fiskdale, MA 01518  
978-318-8848



## East Brimfield Lake Trails



## Grand Trunk Trail

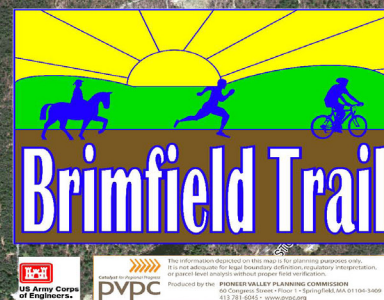
Early last century, the goal of the Grand Trunk Railway's President, Charles M. Hays, was to open a warm water port for his transcontinental Canadian Railway. The plan was to develop a port in Providence, RI and connect that port with the Grand Trunk's Central Vermont Railway in Palmer, MA, a distance of about 53 miles. In 1912, while returning home to Montreal from a meeting in London with the Grand Trunk's financial backers, Hays booked passage on the Titanic. Because of this, the route lost its greatest promoter among management and ownership and the railroad was never finished. Even though Charles M. Hays's dream for the Grand Trunk Railroad went down with the sinking of the Titanic, his legacy lives on in the vision of connecting Palmer and Franklin with the Grand Trunk Trail.

## East Brimfield Nature Trail

The East Brimfield Lake Nature Trail is a ¾ mile trail through five acres of open fields and pine-hardwood forest. The land lies within the boundaries of the East Brimfield Lake Flood Reduction Project.

## Hiking Rules & Tips

1. All dogs must be picked up after and on a 6 foot leash.
2. All trash is carry in-carry out.
3. Alcohol is permitted throughout Army Corps of Engineer property, but keg beer is strictly prohibited. Please drink responsibly.
4. No fires or off-road vehicles are permitted any where across the project.
5. Water levels along the trails vary due to flood reduction operations. Use caution in unfamiliar conditions.



## East Brimfield Dam

East Brimfield Dam is situated on the Quinebaug River in Fiskdale, MA. The project is located within the towns of Sturbridge, Brimfield and Holland, MA. Construction began in 1958 in response to the Flood of 1955 and damages from Hurricane Connie and Diane. The dam was placed into operation in June 1960 at a cost of \$7.1 million and as of September 2009, it has prevented \$109,144,000 in flood damage. East Brimfield Dam is part of a network of six flood reduction dams in the Thames River Basin constructed and maintained by the U.S. Army Corps of Engineers.

It is a 520 foot-long, 55 foot high earthen dam and holds back a lake covering 2,000 acres capable of storing 9.4 billion gallons of water. The Corps regulates the flow of the Quinebaug River by raising or lowering two 6.5' x 11' sluice gates in the gate house of East Brimfield Dam. The water flowing through this gate house drains an area of 67.5 square miles.



East Brimfield Dam -- Woodland and Trolley Trail

