

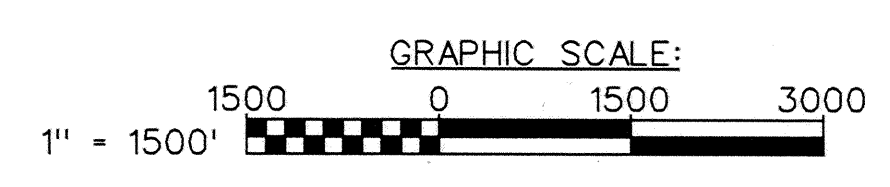
LEGEND	
DESCRIPTION	SYMBOL
DREDGED BOX AREA ON WEYMOUTH FORE RIVER	[Dashed line symbol]

**GENERAL NOTES:**

1. Soundings are in feet and tenths and refer to the plane of Mean Lower Low Water (MLLW) 1983-2001 Tidal Epoch.
2. Topography shown is from previous surveys and/or NOAA Chart No. 13270. All topography, including shoreline, bridges, piers, etc., is located approximate unless otherwise noted and should be used as a general reference only.
3. Bench Mark Data: Vertical depths were obtained from RTK. The information used to calculate the NAVD88 to MLLW corrections as follows:  
 Sta. Little (2005): Elevation 10.91' (NAVD88) 16.15' (MLLW)  
 (Sta. Little is derived from NOAA bench mark publication 8444162).  
 Sta. Hull (2005): Elevation 10.70' (NAVD88) 16.24' (MLLW)  
 Sta. Land (2006): Elevation 6.10' (NAVD88) 11.63' (MLLW)  
 Sta. George (2005): Elevation 10.31' (NAVD88) 15.83' (MLLW)  
 Sta. Bit (2005): Elevation 11.59' (NAVD88) 17.17' (MLLW)  
 (Sta. Hull, Land, George and Bit are derived from NOAA bench mark publication 8444788. Sheets 3 - 11 use the NAVD88 to MLLW corrections of 5.54 feet, which is the average of the corrections from Sta. Bit (2005), George (2005), Land (2006) and Hull (2005)).
4. Coordinates shown are based on the Lambert Grid System for the Commonwealth of Massachusetts (Mainland Zone 2001) and NAD 1927.
5. Survey was performed using a Reson 8124 multibeam echosounder system with a 200 KHZ transducer. Horizontal positioning was obtained utilizing a Leica 1200 GPS System. An RTK base station was set up on Sta. George (2005).
6. The sounding information shown on these maps represents the SHOALEST soundings of those obtained from hydrographic surveys conducted from January to May 2007 for After Dredge/Condition Survey on Weymouth Fore River and during March 2007 for Condition Survey on Town River.
7. The sounding information depicted on these maps should NOT be used to determine volumes. Volumes are determined from more sounding information than shown. Additional sounding information is available upon request.
8. The information depicted on these maps represents the results of surveys made on the dates indicated, and can only be considered as indicating the general conditions existing at that time.
9. Field Books: R&H 4463, 4493, 4513 and 4514 Survey No. 07-859

INDEX OF NAVIGATION AIDS			
NO.	DATE	STATE PLANE COORDINATES	GEOGRAPHIC POSITION
FI R-4	03/29/07	N 481381.38 E 765256.69	42° - 19' - 09.9"N 70° - 53' - 20.3"W
FI R-6	03/29/07	N 481332.81 E 762473.03	42° - 19' - 09.6"N 70° - 53' - 57.3"W
FI G-7	03/29/07	N 480802.68 E 761626.10	42° - 19' - 04.4"N 70° - 54' - 08.6"W
FI G-9	03/29/07	N 480414.46 E 759942.47	42° - 19' - 00.7"N 70° - 54' - 31.1"W
FI R "TN" RG	03/29/07	N 480202.43 E 758692.92	42° - 18' - 58.7"N 70° - 54' - 47.7"W
RN-10	03/29/07	N 479569.59 E 756655.20	42° - 18' - 52.6"N 70° - 55' - 14.9"W
FI G-11	03/29/07	N 478423.75 E 756573.33	42° - 18' - 41.3"N 70° - 55' - 16.1"W
FI R-10A BELL	03/29/07	N 478722.79 E 754649.27	42° - 18' - 44.3"N 70° - 55' - 41.7"W
FI R-14	03/29/07	N 475806.93 E 755148.17	42° - 18' - 15.5"N 70° - 55' - 35.3"W
FI R-2	03/29/07	N 475114.02 E 755383.17	42° - 18' - 08.6"N 70° - 55' - 32.2"W
FI R-4	03/29/07	N 473333.09 E 755842.53	42° - 17' - 51.0"N 70° - 55' - 26.3"W
FI G-5	03/29/07	N 472008.24 E 755831.37	42° - 17' - 37.9"N 70° - 55' - 26.6"W
FI R-6	03/29/07	N 472193.81 E 755458.26	42° - 17' - 39.8"N 70° - 55' - 31.5"W
FI R-8	03/29/07	N 469472.77 E 754140.97	42° - 17' - 13.0"N 70° - 55' - 49.3"W
FI G-9	03/29/07	N 468452.42 E 754128.30	42° - 17' - 02.9"N 70° - 55' - 49.5"W
FI R-10	03/29/07	N 467254.47 E 753466.37	42° - 16' - 51.1"N 70° - 55' - 58.4"W
FI G-11	03/29/07	N 467071.76 E 753876.63	42° - 16' - 49.3"N 70° - 55' - 53.0"W
FI R "WW" RG	03/29/07	N 465981.96 E 753546.80	42° - 16' - 38.6"N 70° - 55' - 57.5"W
FI R-12	03/29/07	N 464398.61 E 753697.06	42° - 16' - 22.9"N 70° - 55' - 55.6"W
FI G Bn-13	03/29/07	N 463702.98 E 754222.86	42° - 16' - 16.0"N 70° - 55' - 48.7"W
FI R-14	03/29/07	N 463223.82 E 753364.91	42° - 16' - 11.3"N 70° - 56' - 00.2"W
FI R Bn-16	03/29/07	N 462366.99 E 752761.64	42° - 16' - 02.9"N 70° - 56' - 08.3"W
FI G "BR" GR	03/29/07	N 462052.28 E 753204.10	42° - 15' - 59.8"N 70° - 56' - 02.4"W
FI G-17	03/29/07	N 460442.48 E 752201.97	42° - 15' - 43.9"N 70° - 56' - 15.9"W
FI R-18	03/29/07	N 460338.61 E 751684.15	42° - 15' - 42.9"N 70° - 56' - 22.8"W
FI G-19	03/29/07	N 458385.30 E 751039.15	42° - 15' - 23.7"N 70° - 56' - 31.5"W
FI R-22	03/29/07	N 457745.39 E 750173.23	42° - 15' - 17.4"N 70° - 56' - 43.1"W
GC-21	03/29/07	N 457446.97 E 750584.43	42° - 15' - 14.4"N 70° - 56' - 37.6"W
GC-23	03/29/07	N 456855.91 E 749780.34	42° - 15' - 08.6"N 70° - 56' - 48.4"W
FI G-25	03/29/07	N 456563.94 E 748828.94	42° - 15' - 05.8"N 70° - 57' - 01.1"W
FI R-26	03/29/07	N 456343.58 E 747696.41	42° - 15' - 03.7"N 70° - 57' - 16.1"W
GC-27	03/29/07	N 455159.11 E 746309.11	42° - 14' - 52.1"N 70° - 57' - 34.7"W
FI R-28	03/29/07	N 455081.99 E 745414.52	42° - 14' - 51.4"N 70° - 57' - 46.6"W

INDEX OF NAVIGATION AIDS			
NO.	DATE	STATE PLANE COORDINATES	GEOGRAPHIC POSITION
RN-2	03/28/07	N 455598.77 E 744285.85	42° - 14' - 56.6"N 70° - 58' - 01.5"W
GC-3	03/28/07	N 455728.40 E 743093.48	42° - 14' - 57.9"N 70° - 58' - 17.4"W
RN-4	03/28/07	N 456134.30 E 742984.71	42° - 15' - 01.9"N 70° - 58' - 18.8"W
RN-6	03/27/07	N 456997.65 E 742212.41	42° - 15' - 10.5"N 70° - 58' - 29.0"W
GC-7	03/28/07	N 456892.04 E 741874.47	42° - 15' - 09.5"N 70° - 58' - 33.5"W
GC-9	03/28/07	N 457298.64 E 741537.39	42° - 15' - 13.5"N 70° - 58' - 37.9"W
GC-11	03/28/07	N 457515.91 E 741061.99	42° - 15' - 15.7"N 70° - 58' - 44.2"W
RN-2	03/27/07	N 458128.97 E 741232.92	42° - 15' - 21.7"N 70° - 58' - 41.9"W
GC-3	03/27/07	N 458167.82 E 741169.24	42° - 15' - 22.1"N 70° - 58' - 42.8"W
RN-12	03/27/07	N 458041.94 E 740946.32	42° - 15' - 20.9"N 70° - 58' - 45.7"W
RN-14	03/27/07	N 458152.86 E 740149.23	42° - 15' - 22.0"N 70° - 58' - 56.3"W
RN-16	03/28/07	N 457581.07 E 739489.94	42° - 15' - 16.4"N 70° - 59' - 05.1"W



**US Army Corps of Engineers**  
New England District

Rev.	Date	Description

---

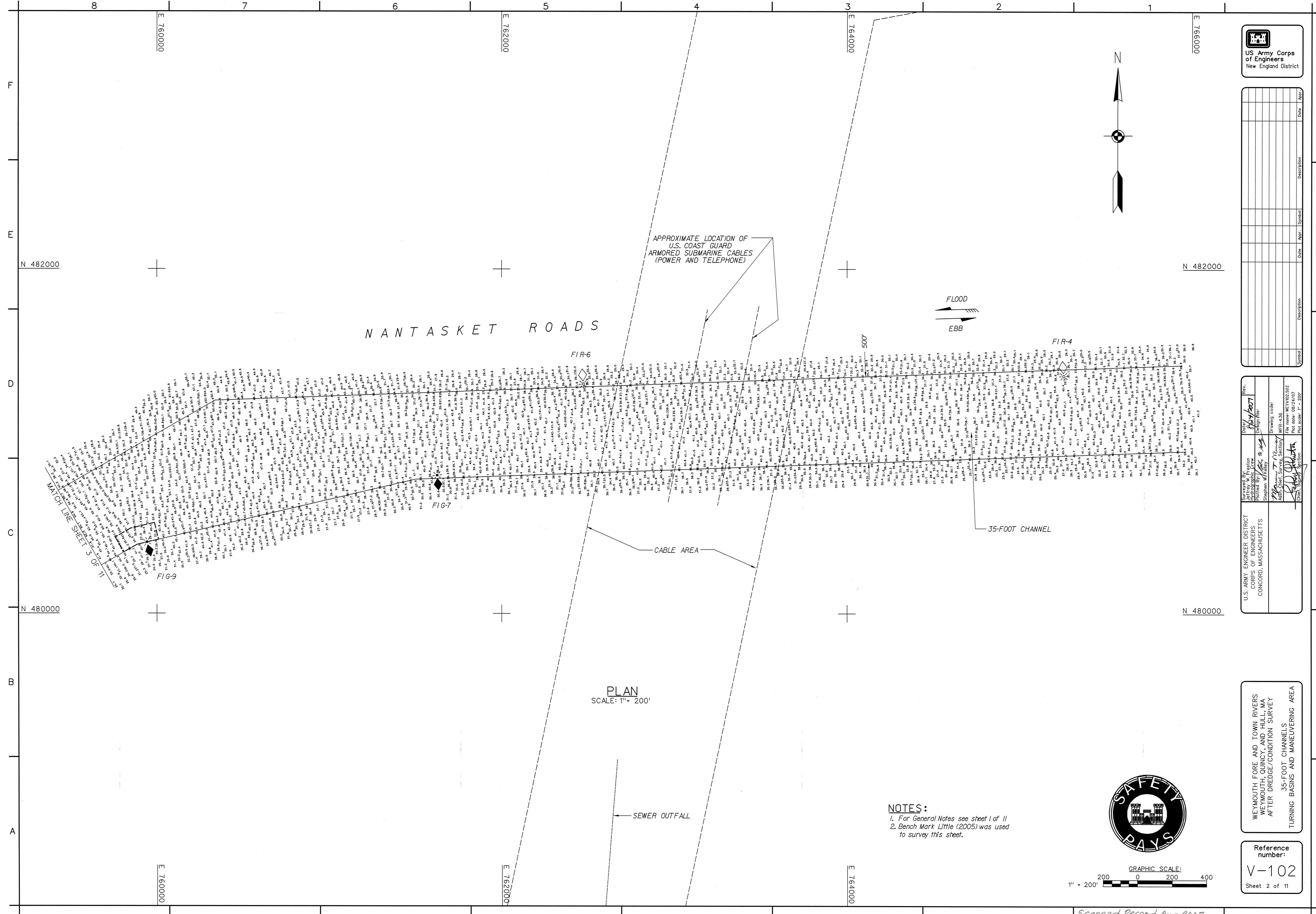
Surveyed By: [Signature] Hydrographic Crew Plotted By: [Signature] Stephen M. Kelly	Drawing code: WFR-436 File name: WYV-101 Plot date: 08/24/07 Plot scale: 1" = 1500'	U.S. ARMY ENGINEER DISTRICT CORPS OF ENGINEERS CONCORD, MASSACHUSETTS
--	---	---

---

WEYMOUTH FORE AND TOWN RIVERS  
WETMOUTH, QUINCY, AND HULL, MA  
AFTER DREDGE/CONDITION SURVEY  
35-FOOT CHANNELS  
TURNING BASINS AND MANEUVERING AREA

Reference number:  
**V-101**  
Sheet 1 of 11





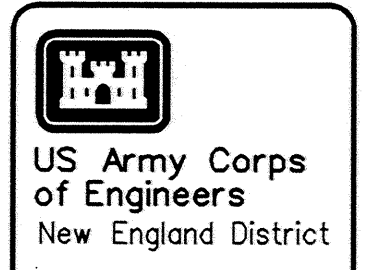
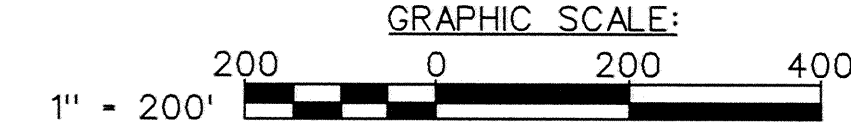
NANTASKET ROADS

APPROXIMATE LOCATION OF  
U.S. COAST GUARD  
ARMORED SUBMARINE CABLES  
(POWER AND TELEPHONE)

FLOOD  
EBB

PLAN  
SCALE: 1" = 200'

- NOTES:**
- For General Notes see sheet 1 of 11
  - Bench Mark Little (2005) was used to survey this street.



Symbol	Description	Date	Appr.	Drawn

U.S. ARMY ENGINEER DISTRICT  
CORPS OF ENGINEERS  
CONCORD, MASSACHUSETTS

Surveyed By: Stephen W. Kelly  
Plotted By: Stephen W. Kelly  
Design File: WFR-435

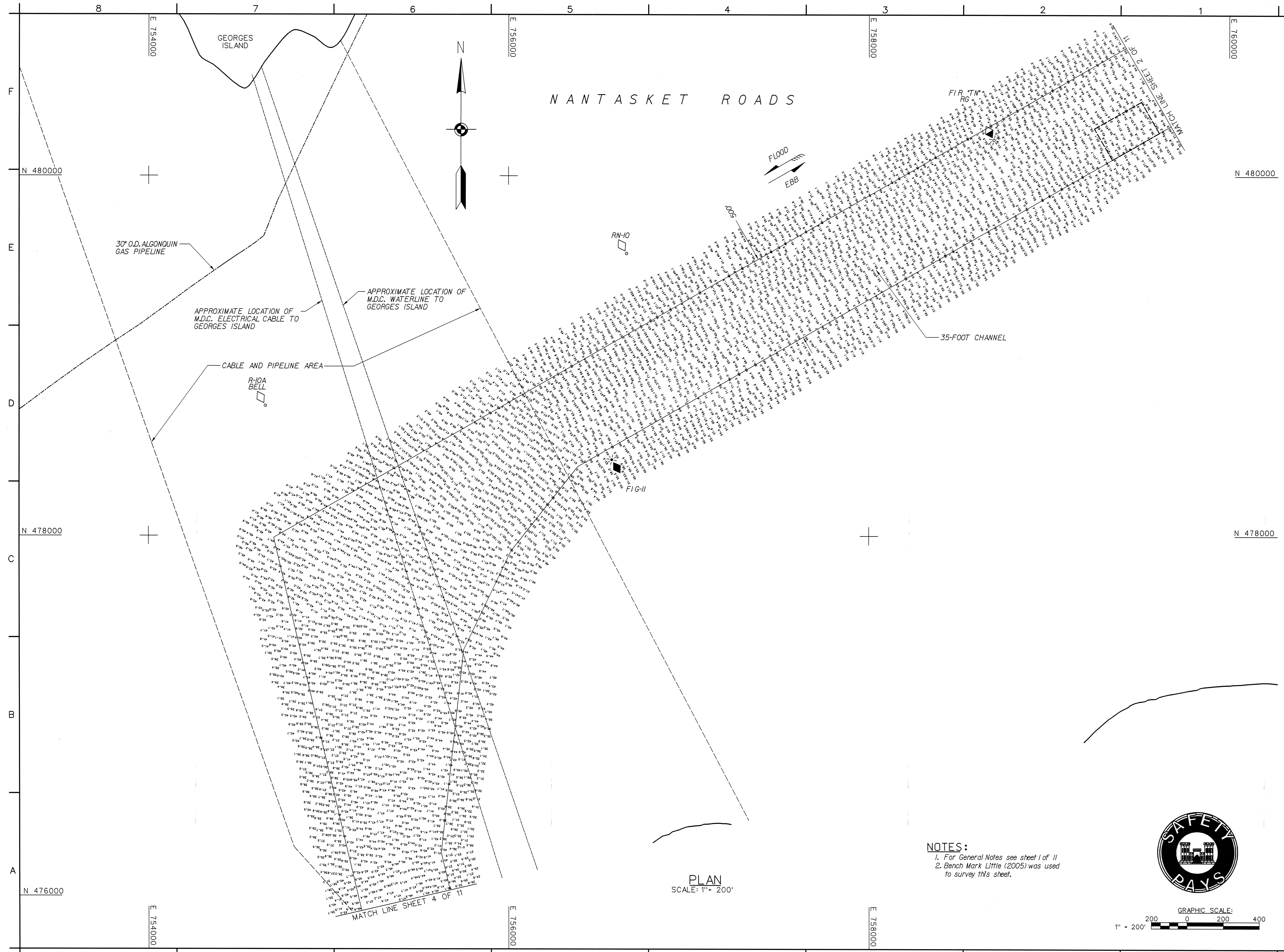
Rev. 1/2007  
Drawing code: WFR-435  
File name: WEYV92.502  
Plot date: 08/24/07  
Plot scale: 1" = 200'

WYMOUTH, FORE AND TOWN RIVERS  
WYMOUTH, QUINCY, AND HULL, MA  
AFTER DREDGE/CONDITION SURVEY

35-FOOT CHANNELS  
TURNING BASINS AND MANEUVERING AREA

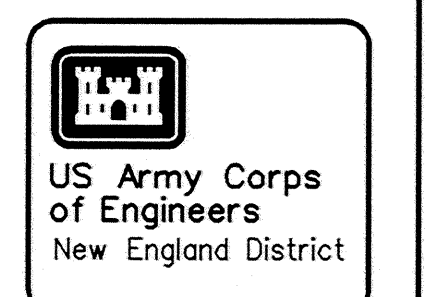
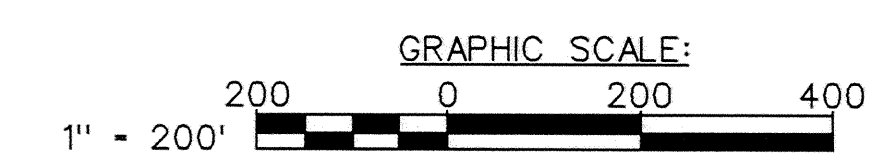
Reference number:  
**V-102**  
Sheet 2 of 11





PLAN  
SCALE: 1" = 200'

NOTES:  
1. For General Notes see sheet 1 of 11  
2. Bench Mark Little (2005) was used to survey this sheet.



Date	Appr.	Symbol	Description

U.S. ARMY ENGINEER DISTRICT  
CORPS OF ENGINEERS  
CONCORD, MASSACHUSETTS

Surveyed By: Jeffrey W. Preston  
Plotted By: Stephen W. Kelly

Date: 8/24/07  
Signature: [Signature]

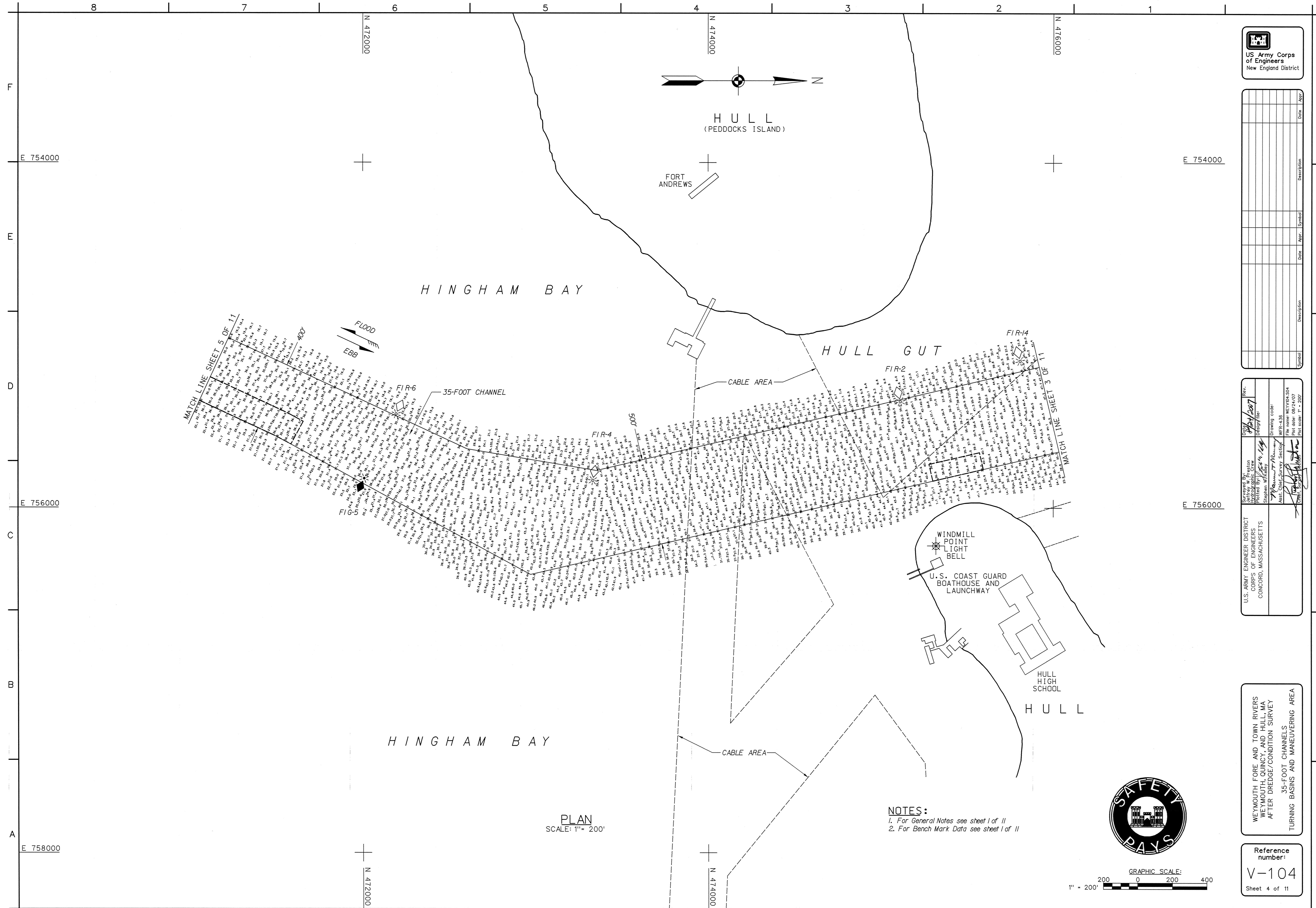
Drawing code: WER-43B  
File name: WEY003.S03  
Plot date: 08/24/07  
Plot scale: 1" = 200'

WEYMOUTH FORE AND TOWN RIVERS  
WEYMOUTH, QUINCY, AND HULL, MA  
AFTER DREDGE/CONDITION SURVEY

35-FOOT CHANNELS  
TURNING BASINS AND MANEUVERING AREA

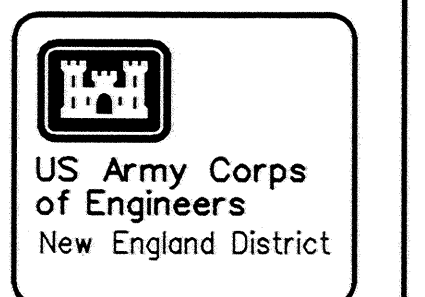
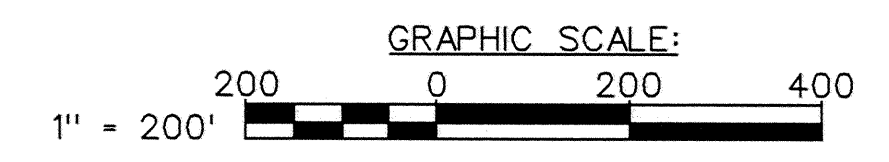
Reference number:  
**V-103**  
Sheet 3 of 11





PLAN  
SCALE: 1" = 200'

- NOTES:  
1. For General Notes see sheet 1 of 11  
2. For Bench Mark Data see sheet 1 of 11

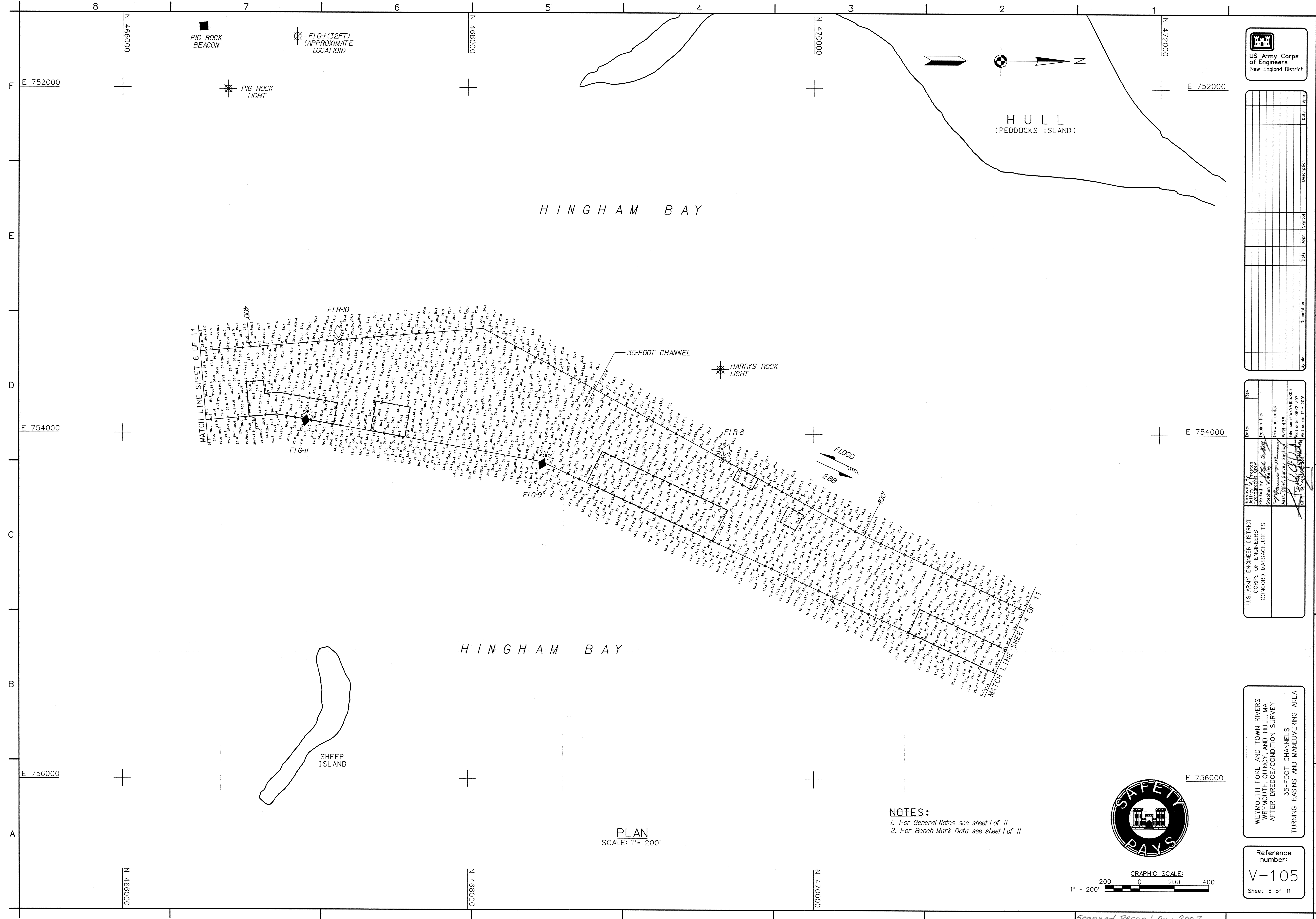


Symbol	Description	Date	Appr.

Surveyed By: <i>AS</i> Plotted By: <i>AS</i> Stephen W. Kelly Asst. Chief, Survey Section	Rev. <i>AS</i> Date: <i>8/24/07</i> Design/Iss. Drawing code: WFR-4-38 File name: WFR-4-38 Plot date: 08/24/07 Plot scale: 1" = 200' Asst. Chief, Survey Section <i>[Signature]</i> Connor, Survey Section
U.S. ARMY ENGINEER DISTRICT CORPS OF ENGINEERS CONCORD, MASSACHUSETTS	<i>[Signature]</i> Asst. Chief, Survey Section

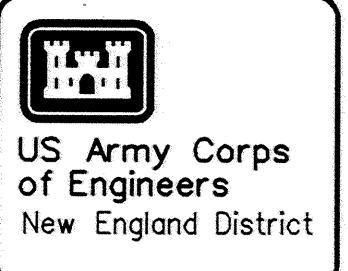
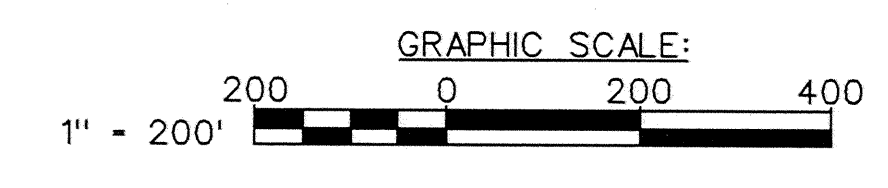
WEYMOUTH FORE AND TOWN RIVERS  
WEYMOUTH, QUINCY, AND HULL, MA  
AFTER DREDGE/CONDITION SURVEY  
35-FOOT CHANNELS  
TURNING BASINS AND MANEUVERING AREA

Reference number:  
V-104  
Sheet 4 of 11



PLAN  
SCALE: 1" = 200'

NOTES:  
1. For General Notes see sheet 1 of 11  
2. For Bench Mark Data see sheet 1 of 11



Date	Description	Appr.	Symbol	Date	Description

Date	Rev.	By	Check	Date	Rev.	By	Check

U.S. ARMY ENGINEER DISTRICT  
CORPS OF ENGINEERS  
CONCORD, MASSACHUSETTS

Surveyed By: Jeffrey W. Preston  
Plotted By: Stephen W. Laffan  
Design File:  
Drawing Code:  
File Name: WYMOBS.S05  
WFR-436  
Plot Date: 08/24/07  
Plot Scale: 1" = 200'

WYMOUTH FORE AND TOWN RIVERS  
WYMOUTH, QUINCY, AND HULL, MA  
AFTER DREDGE/CONDITION SURVEY  
TURNING BASINS AND MANEUVERING AREA

Reference number:  
**V-105**  
Sheet 5 of 11



8

7

6

5

4

3

2

1

N 462000

N 464000

N 466000

N 462000

N 464000

N 466000

E 752000

E 752000

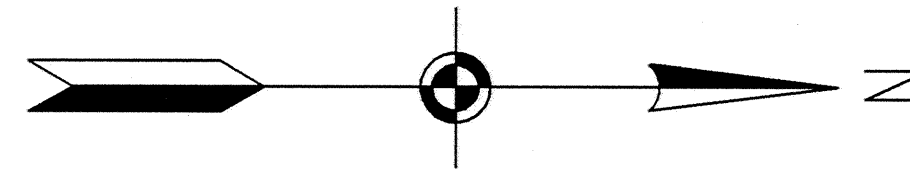
E 754000

E 754000

H I N G H A M B A Y

H I N G H A M B A Y

G R A P E I S L A N D



PLAN  
SCALE: 1" = 200'



NOTES:  
1. For General Notes see sheet 1 of 11  
2. For Bench Mark Data see sheet 1 of 11

GRAPHIC SCALE:  
1" = 200' 200 0 200 400

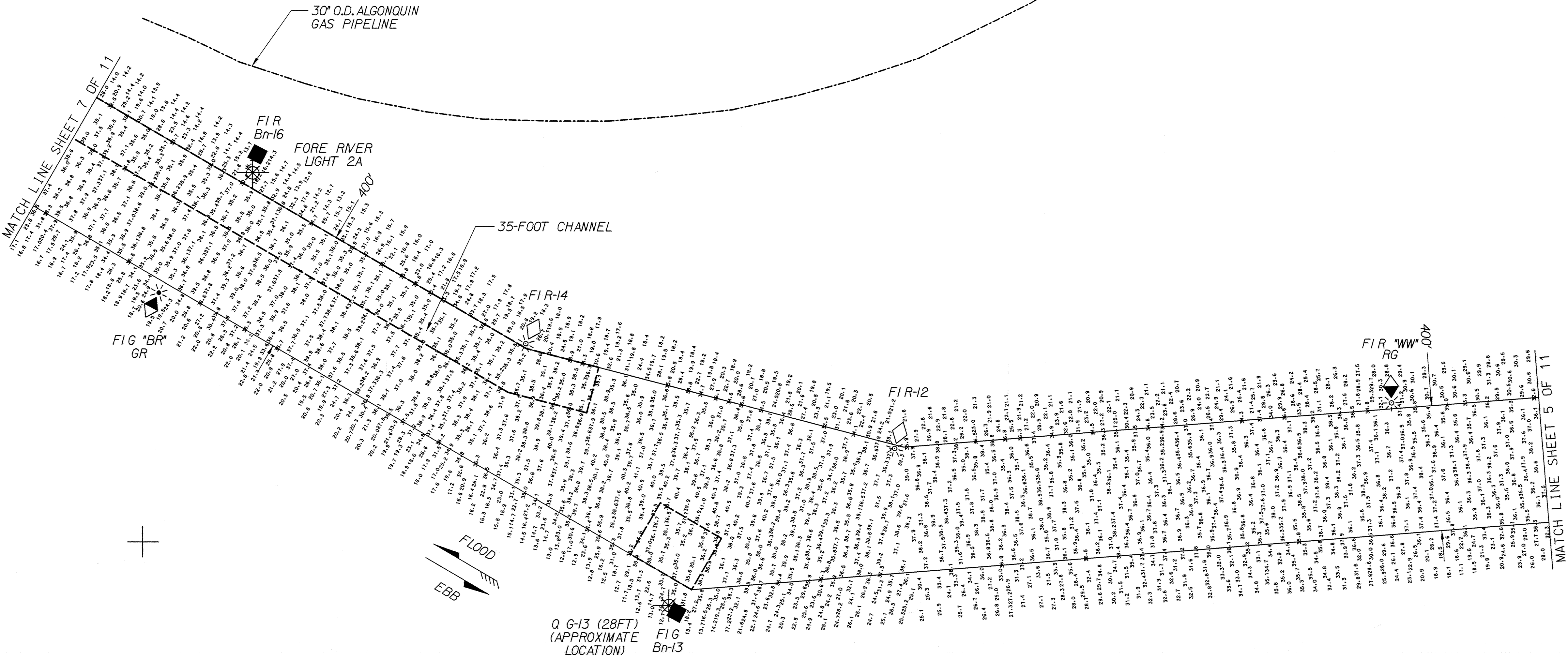


Description	Date	Appr.	Symbol	Date	Appr.

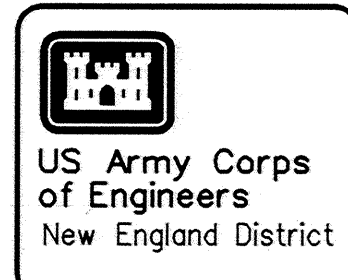
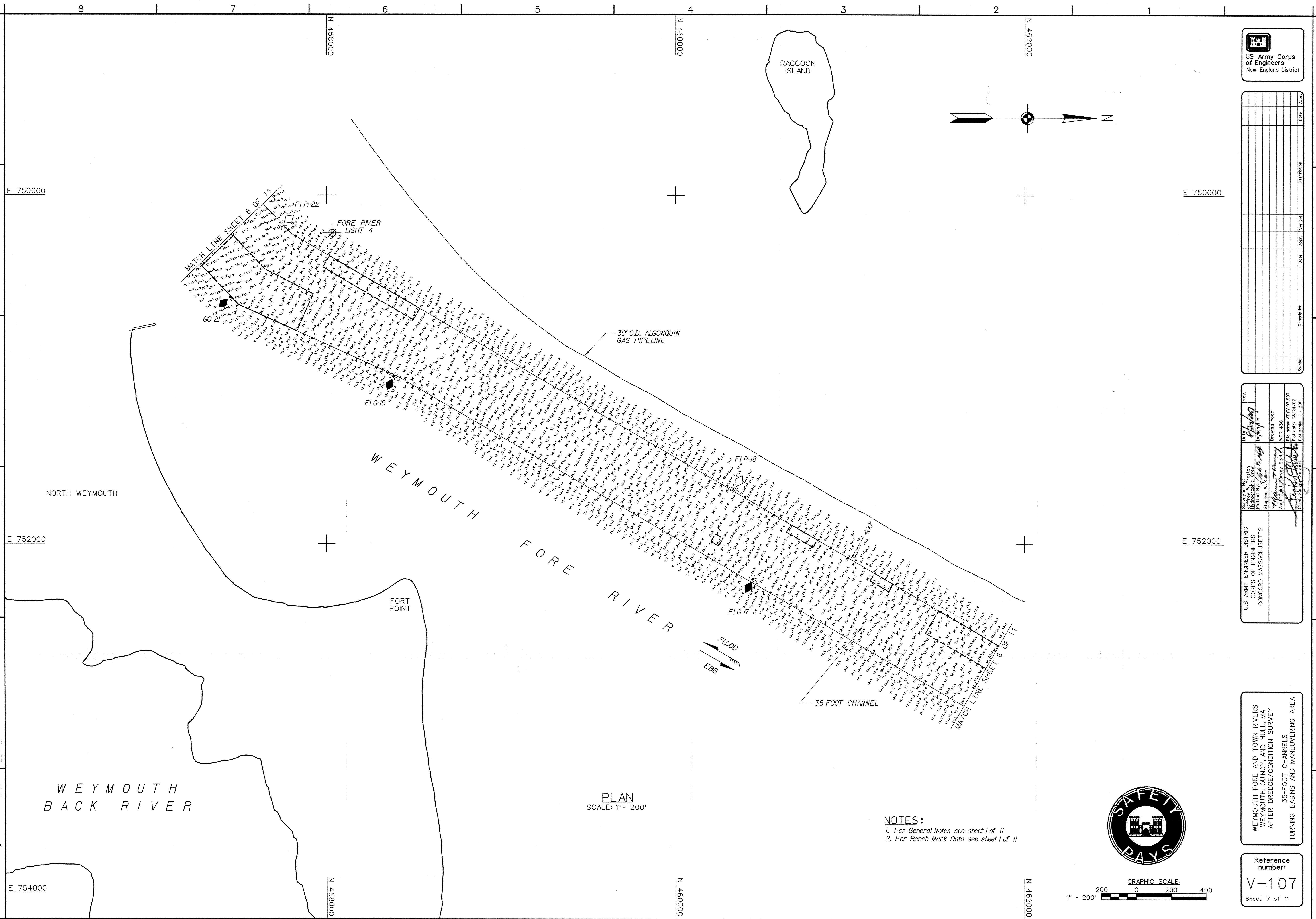
U.S. ARMY ENGINEER DISTRICT CORPS OF ENGINEERS CONCORD, MASSACHUSETTS	Surveys By: Jeffrey W. Foston Plotter By: <i>[Signature]</i> Stephen W. Keller	Date: 02/24/2007 Dyplan file:	Rev. 1
	ASST. CHIEF, SURVEY SECTION <i>[Signature]</i>	Drawing code: WFR-436 File name: WYVMO6.S06 Plot date: 08/24/07 Plot scale: 1" = 200'	

WEYMOUTH FORE AND TOWN RIVERS  
WEYMOUTH, QUINCY, AND HULL, MA  
AFTER DREDGE/CONDITION SURVEY  
35-FOOT CHANNELS  
TURNING BASINS AND MANEUVERING AREA

Reference number:  
V-106  
Sheet 6 of 11



LOWER NECK



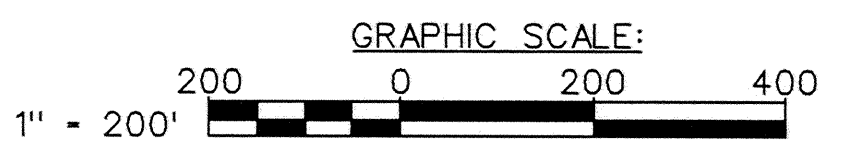
Date	Appr.	Symbol	Description

U.S. ARMY ENGINEER DISTRICT CORPS OF ENGINEERS CONCORD, MASSACHUSETTS	Date: 8/2/07 Drawn by: [Signature]	Rev. [Blank]
	Surveyed by: [Blank] Plotted by: [Blank]	Drawing code: WFR-436
	Stephen W. Kelley Asst. Chief, Survey Section	File name: WETV07.007 Plot date: 08/24/07 Plot scale: 1" = 200'

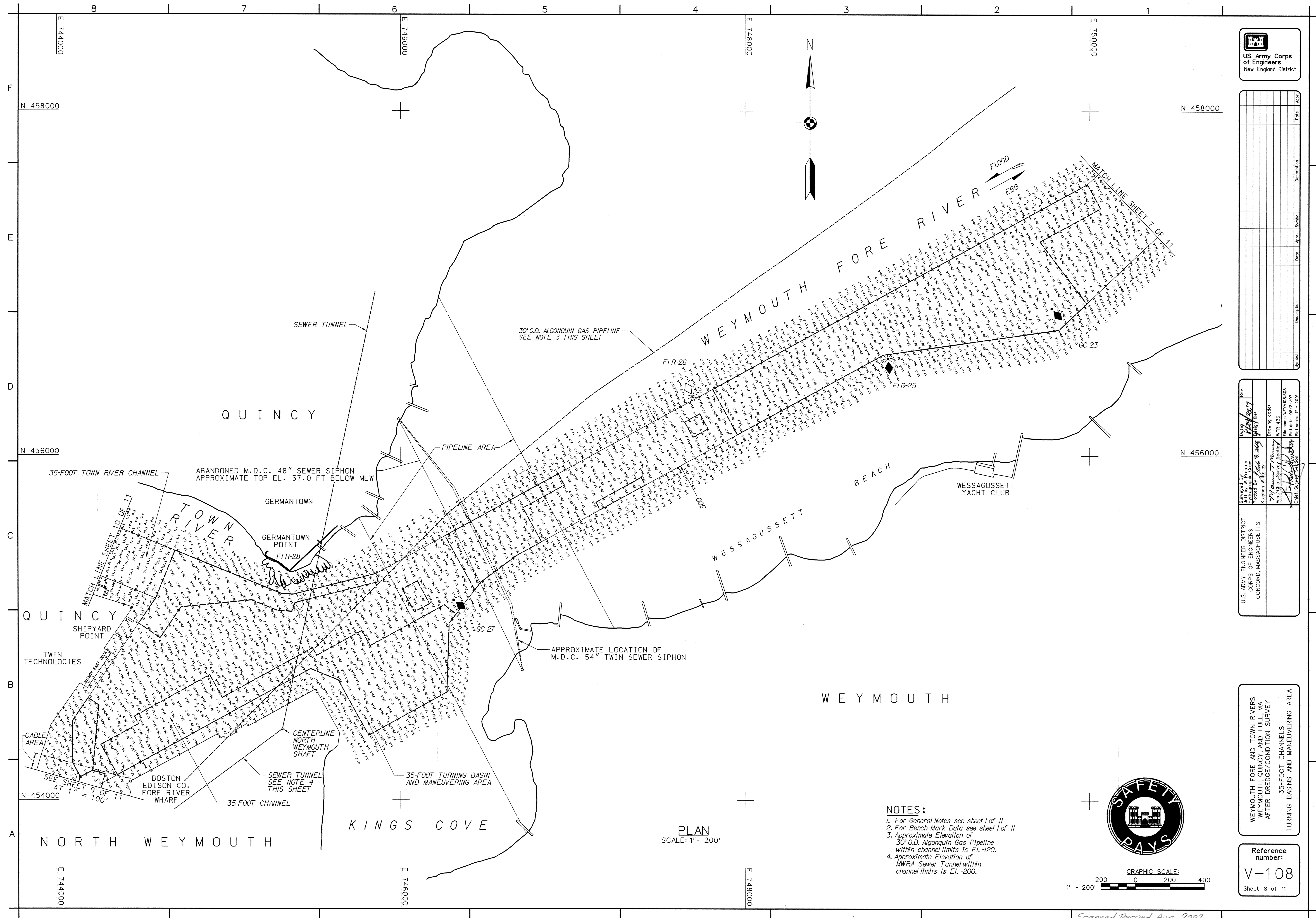
WEYMOUTH FORE AND TOWN RIVERS  
 WEYMOUTH, QUINCY, AND HULL, MA  
 AFTER DREDGE/CONDITION SURVEY  
 TURNING BASINS AND MANEUVERING AREA  
 35-FOOT CHANNELS

Reference  
 number:  
**V-107**  
 Sheet 7 of 11

- NOTES:**  
 1. For General Notes see sheet 1 of 11  
 2. For Bench Mark Data see sheet 1 of 11







Symbol	Description	Date	Appr.	Symbol	Description	Date	Appr.

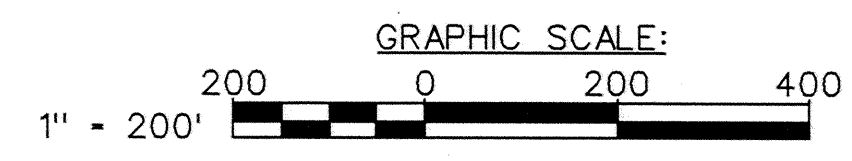
Rev.	By	Date	Description
1	W. J. Kelly	08/24/07	Issue for construction
2	W. J. Kelly	08/24/07	Issue for construction

U.S. ARMY ENGINEER DISTRICT  
 CORPS OF ENGINEERS  
 CONCORD, MASSACHUSETTS  
 W. J. Kelly  
 Chief, Survey Section

WEYMOUTH FORE AND TOWN RIVERS  
WEYMOUTH, QUINCY, AND HULL, MA  
AFTER DREDGE/CONDITION SURVEY  
35-FOOT CHANNELS  
TURNING BASINS AND MANEUVERING AREA

Reference number:  
**V-108**  
Sheet 8 of 11

- NOTES:**
- For General Notes see sheet 1 of 11
  - For Bench Mark Data see sheet 1 of 11
  - Approximate Elevation of 30" O.D. Algonquin Gas Pipeline within channel limits is El. -120.
  - Approximate Elevation of MWRA Sewer Tunnel within channel limits is El. -200.





Date	Appr.	Symbol	Description

Rev.	Date	Description
1	08/24/07	Final
2	08/24/07	Final

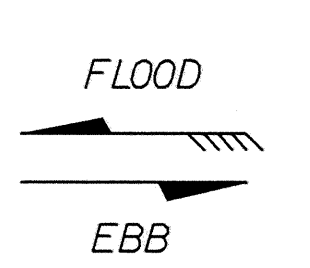
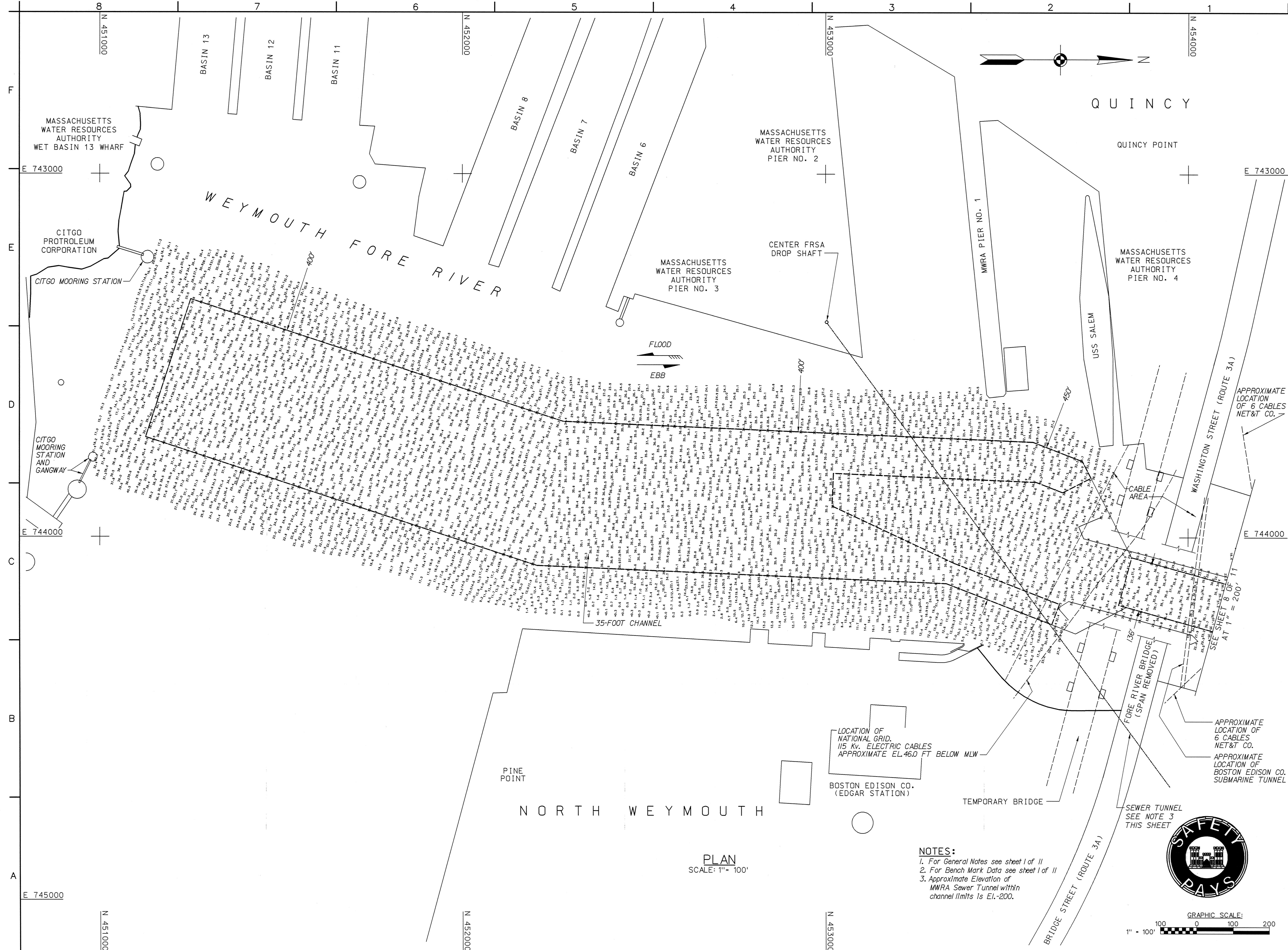
Drawn by: Stephen W. Kelly  
 Checked by: Stephen W. Kelly  
 Title: Chief, Survey Section  
 File name: WRYV09.039  
 File date: 08/24/07  
 Plot scale: 1" = 200'

U.S. ARMY ENGINEER DISTRICT  
CORPS OF ENGINEERS  
CONCORD, MASSACHUSETTS

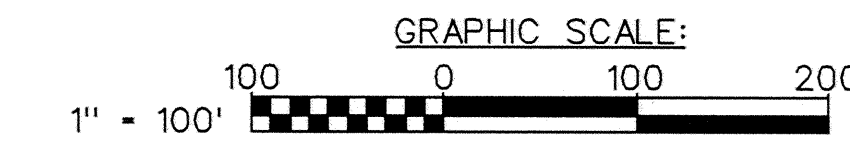
WEYMOUTH FORE AND TOWN RIVERS  
WEYMOUTH, QUINCY, AND HULL, MA  
AFTER DREDGE/CONDITION SURVEY

TURNING BASINS AND MANEUVERING AREA  
35-FOOT CHANNELS

Reference number:  
**V-109**  
Sheet 9 of 11



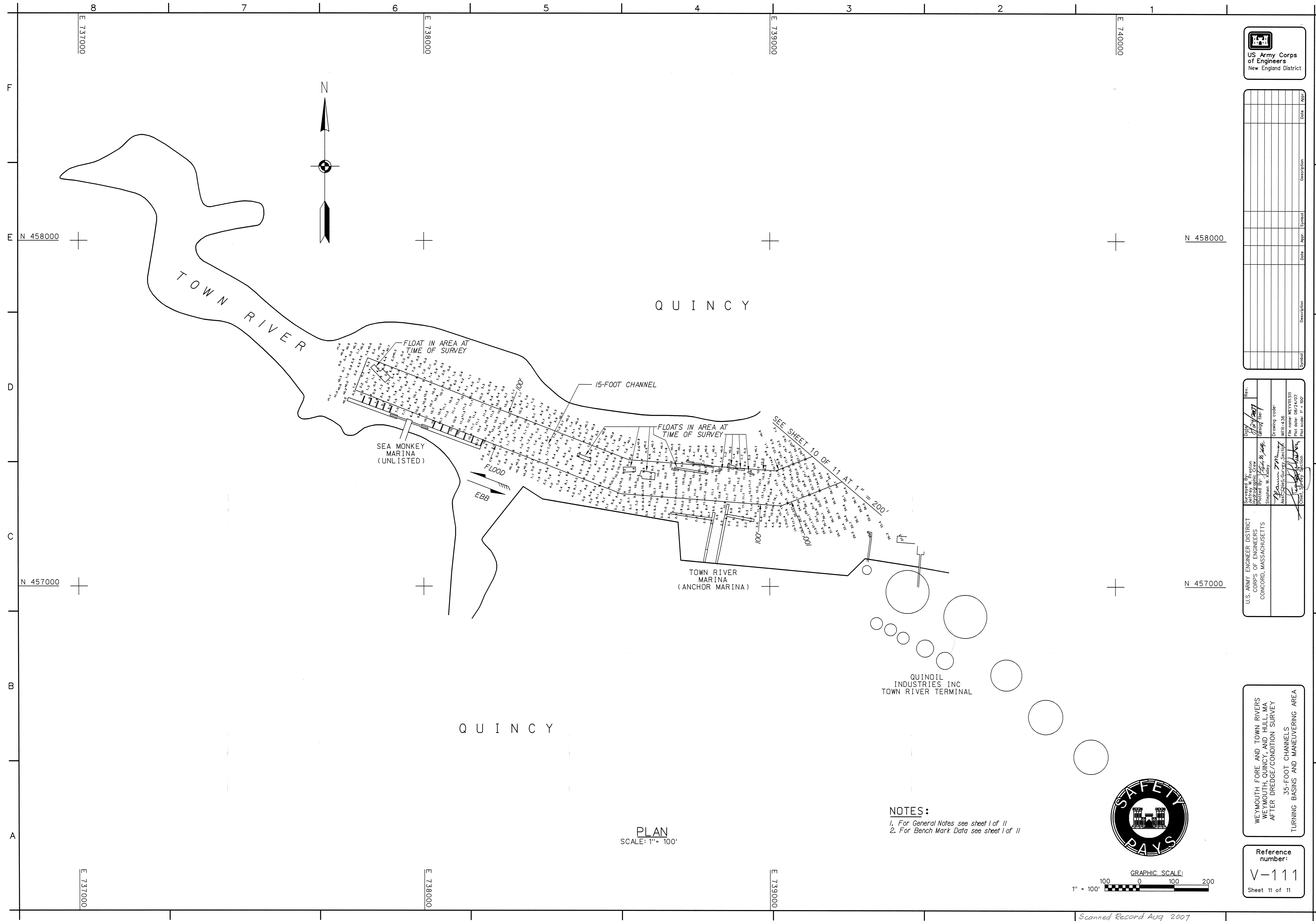
- NOTES:**
1. For General Notes see sheet 1 of 11
  2. For Bench Mark Data see sheet 1 of 11
  3. Approximate Elevation of MWRA Sewer Tunnel within channel limits is EL. 200.





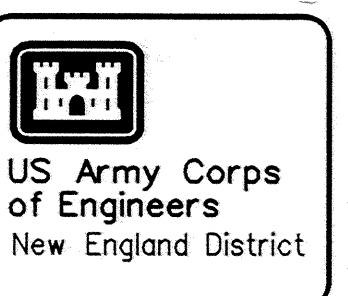
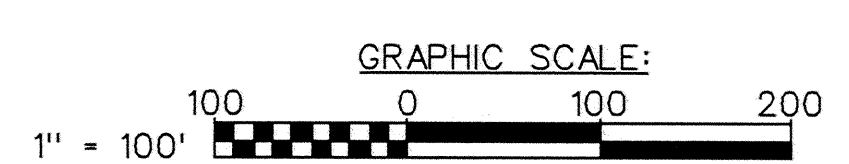
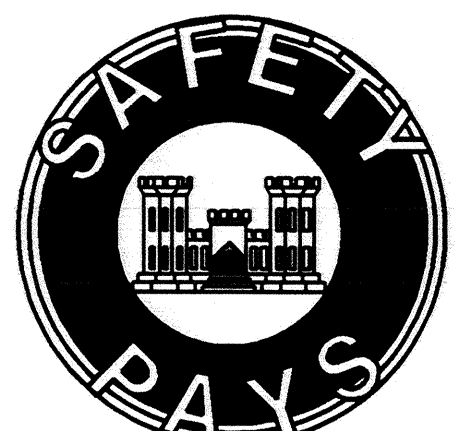






PLAN  
SCALE: 1" = 100'

NOTES:  
1. For General Notes see sheet 1 of 11  
2. For Bench Mark Data see sheet 1 of 11



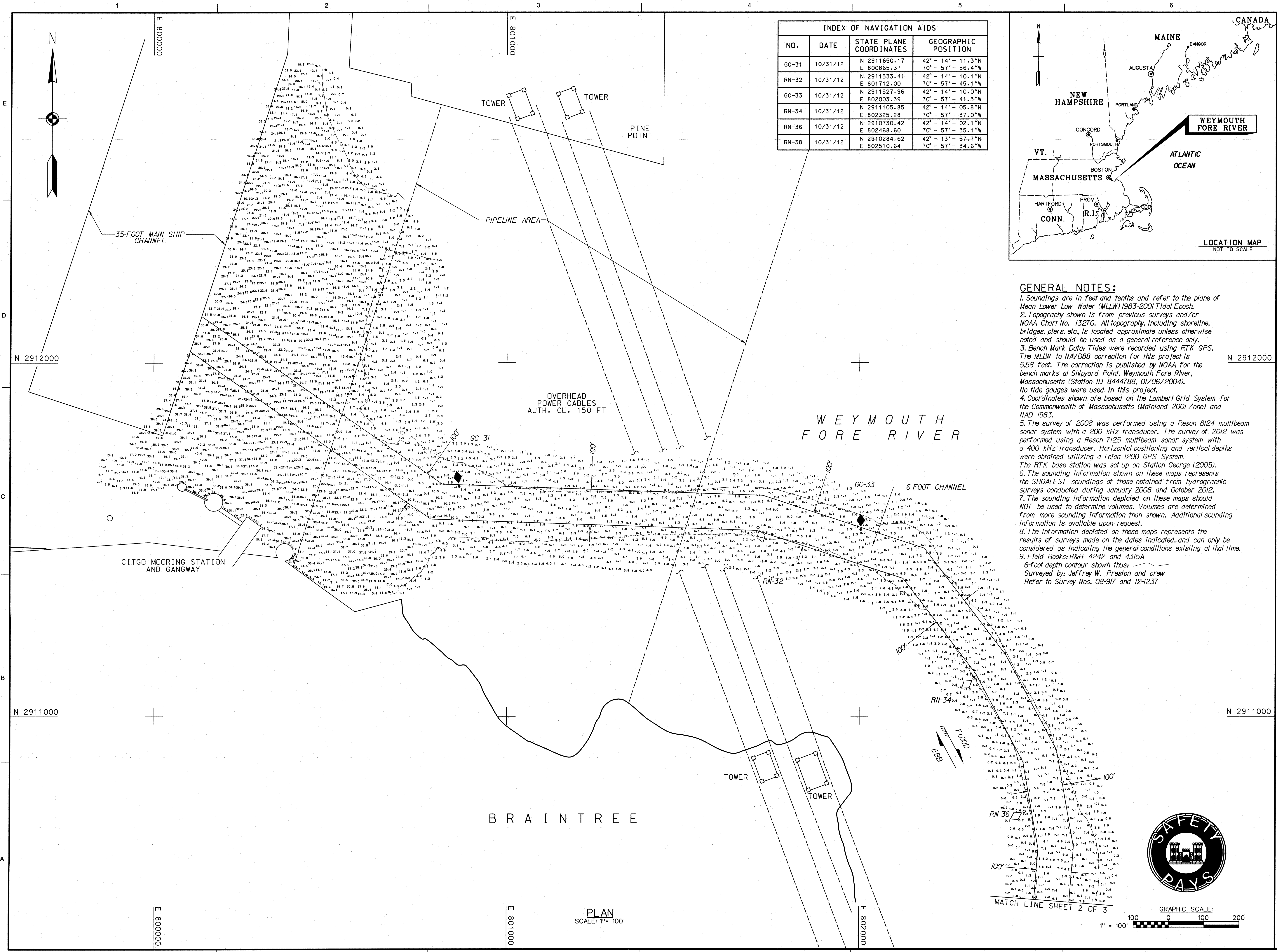
Symbol	Description	Date	Appr.

U.S. ARMY ENGINEER DISTRICT CORPS OF ENGINEERS CONCORD, MASSACHUSETTS	Drawn By: Stephen W. Kelley	Checked By: [Signature]	Rev. 02/24/07
	Drawing Code: WFR-4.3B	File Name: WYV111.S11	Plot Date: 08/24/07

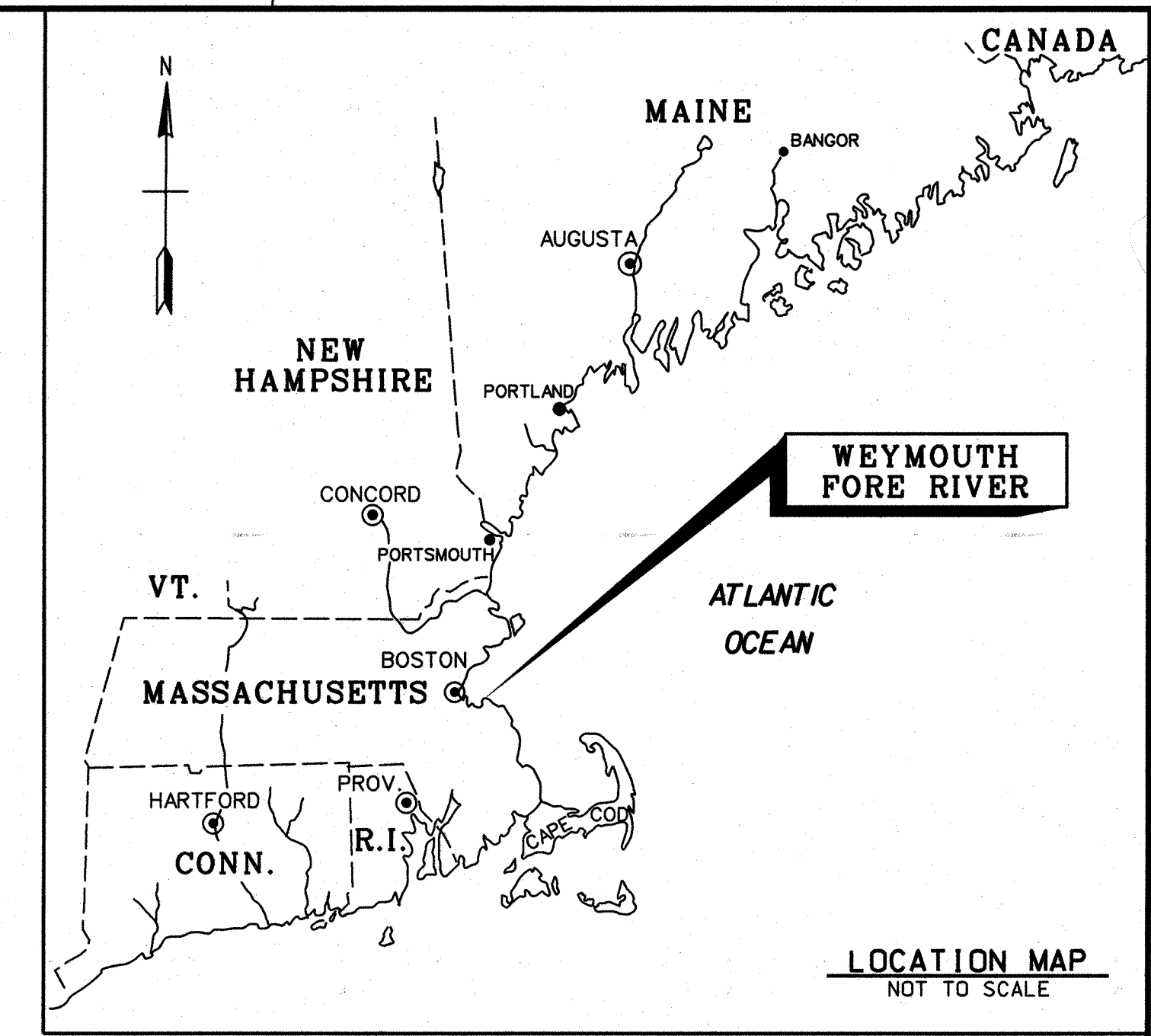
WEYMOUTH FORE AND TOWN RIVERS  
WEYMOUTH, QUINCY, AND HULL, MA  
AFTER DREDGE/CONDITION SURVEY  
TURNING BASINS AND MANEUVERING AREA  
35-FOOT CHANNELS

Reference  
number:  
V-111  
Sheet 11 of 11





INDEX OF NAVIGATION AIDS			
NO.	DATE	STATE PLANE COORDINATES	GEOGRAPHIC POSITION
GC-31	10/31/12	N 2911650.17 E 800865.37	42° - 14' - 11.3"N 70° - 57' - 56.4"W
RN-32	10/31/12	N 2911533.41 E 801712.00	42° - 14' - 10.1"N 70° - 57' - 45.1"W
GC-33	10/31/12	N 2911527.96 E 802003.39	42° - 14' - 10.0"N 70° - 57' - 41.3"W
RN-34	10/31/12	N 2911105.85 E 802325.28	42° - 14' - 05.8"N 70° - 57' - 37.0"W
RN-36	10/31/12	N 2910730.42 E 802468.60	42° - 14' - 02.1"N 70° - 57' - 35.1"W
RN-38	10/31/12	N 2910284.62 E 802510.64	42° - 13' - 57.7"N 70° - 57' - 34.6"W



**GENERAL NOTES:**

1. Soundings are in feet and tenths and refer to the plane of Mean Lower Low Water (MLLW) 1983-2001 Tidal Epoch.
2. Topography shown is from previous surveys and/or NOAA Chart No. 13270. All topography, including shoreline, bridges, piers, etc., is located approximate unless otherwise noted and should be used as a general reference only.
3. Bench Mark Data: Tides were recorded using RTK GPS. The MLLW to NAVD88 correction for this project is 5.58 feet. The correction is published by NOAA for the bench marks at Shigyard Point, Weymouth Fore River, Massachusetts (Station ID 8444788, 01/06/2004). No tide gauges were used in this project.
4. Coordinates shown are based on the Lambert Grid System for the Commonwealth of Massachusetts (Mainland 2001 Zone) and NAD 1983.
5. The survey of 2008 was performed using a Reson 8124 multibeam sonar system with a 200 kHz transducer. The survey of 2012 was performed using a Reson 7125 multibeam sonar system with a 400 kHz transducer. Horizontal positioning and vertical depths were obtained utilizing a Leica 1200 GPS system. The RTK base station was set up on Station George (2005).
6. The sounding information shown on these maps represents the SHOALEST soundings of those obtained from hydrographic surveys conducted during January 2008 and October 2012.
7. The sounding information depicted on these maps should NOT be used to determine volumes. Volumes are determined from more sounding information than shown. Additional sounding information is available upon request.
8. The information depicted on these maps represents the results of surveys made on the dates indicated, and can only be considered as indicating the general conditions existing at that time.
9. Field Books: R/LD 4242 and 4315A

6-foot depth contour shown thus:  
 Surveyed by: Jeffrey W. Preston and crew  
 Refer to Survey Nos. 08-917 and 12-1237

US Army Corps of Engineers  
New England District

DATE	DESCRIPTION

---

DATE: 4/25/13	CRD BY: JWP
DRAWN BY: Jeffrey W. Preston	DESIGN FILE: WFM
CHECKED BY: Jeffrey W. Preston	WEYFMS.DGN
FILE NAME: WFM	FILE NO: 101
SCALE: 1" = 100'	SIZE: 11x17
ANSI: MEASUREMENT	

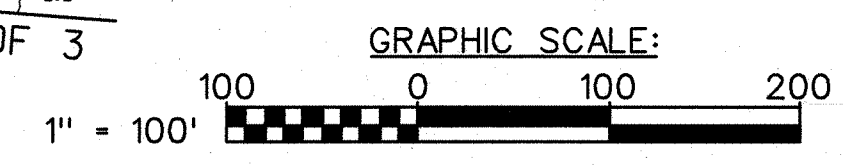
---

WEYMOUTH FORE RIVER  
BRAINTREE-WEYMOUTH, MASSACHUSETTS  
REPORT / CONDITION SURVEY

SAFETY PAYS

SHEET IDENTIFICATION  
**V-101**  
SHEET 1 OF 3

PLAN  
SCALE: 1" = 100'

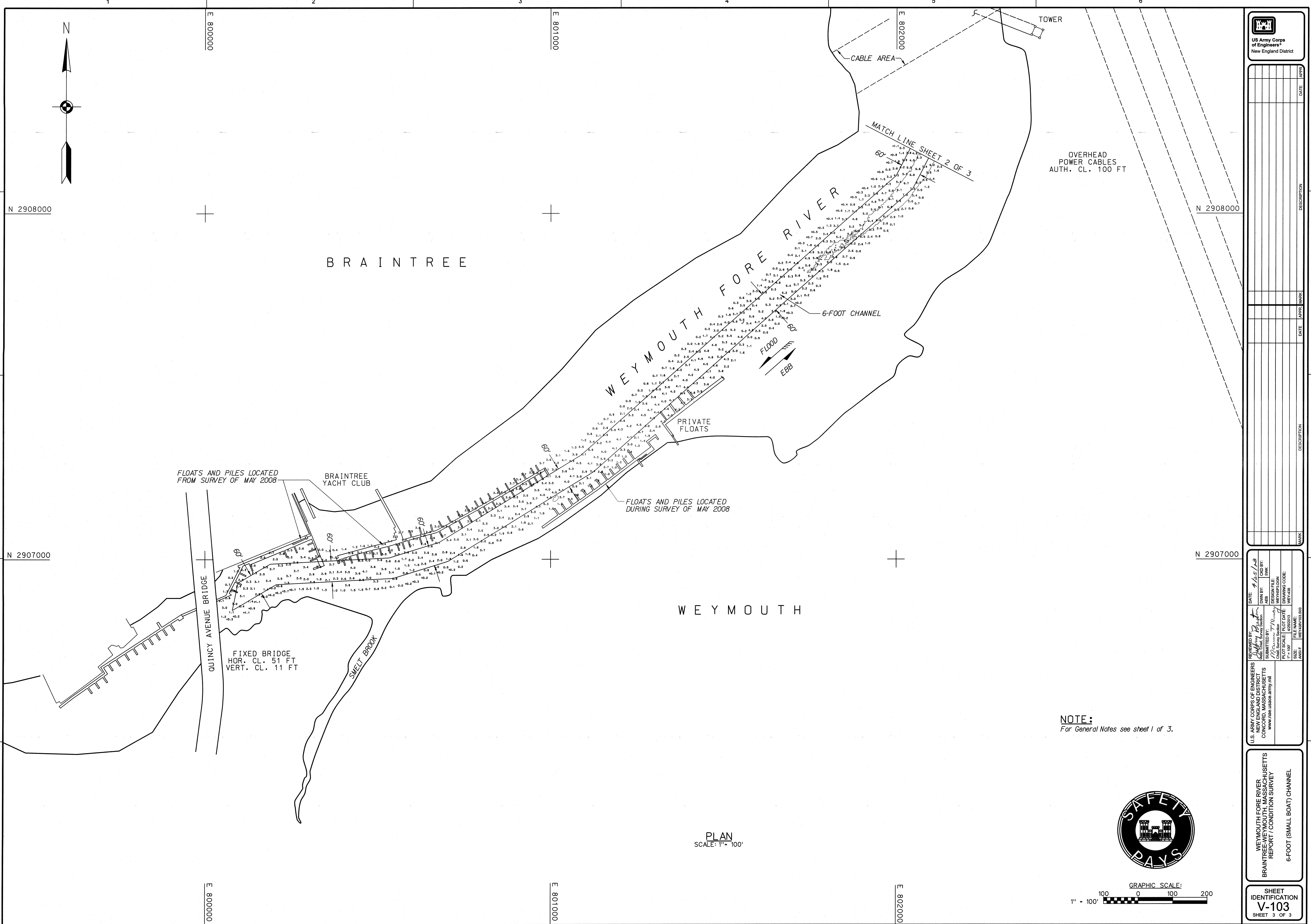


MATCH LINE SHEET 2 OF 3









**NOTE:**  
 For General Notes see sheet 1 of 3.

**PLAN**  
 SCALE: 1" = 100'



 US Army Corps of Engineers New England District	
DATE	APPR.
DATE	MARK
DATE	APPR.
DATE	MARK
DATE	APPR.
DATE	MARK
DATE	APPR.
DATE	MARK
DATE	APPR.
DATE	MARK
DATE	APPR.
DATE	MARK

REVIEWED BY:

DATE: 4/25/13

DRAWN BY:

DATE: 4/18/13

DESIGNED BY:

DATE: 4/18/13

PROJECT: 6252013

DRAWING CODE: WEY-1438

PLOT SCALE: 1" = 100'

DATE: 4/25/13

SCALE: WEY-1438-038

U.S. ARMY CORPS OF ENGINEERS NEW ENGLAND DISTRICT CONSTRUCTION DIVISION www.usace.army.mil	WYEMOUTH FORE RIVER BRAINTREE-WEYMOUTH, MASSACHUSETTS REPORT / CONDITION SURVEY 6-FOOT (SMALL BOAT) CHANNEL
---	--

SHEET IDENTIFICATION <b>V-103</b> SHEET 3 OF 3
---