




Legend

 Overlooking Mowing Area

Legend

 Weekly



**US Army Corps
of Engineers®**
New England District



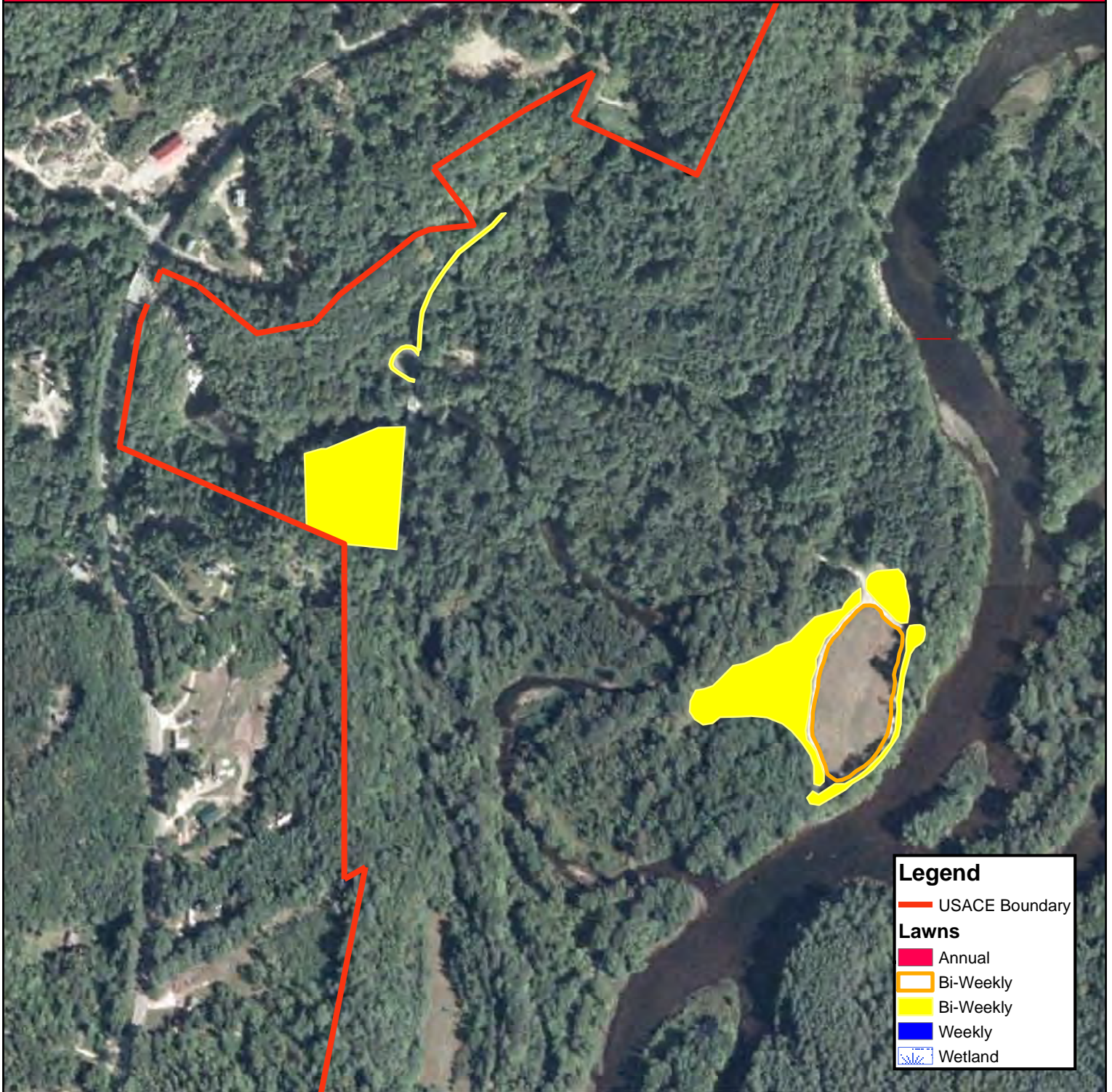
Overlook Mowing Area
Franklin, NH. Approximately
0.30 acres

GIS Sources: Google Earth

GROUNDS MAINTENANCE - MAP 1 of 4

FRANKLIN FALLS DAM
US ARMY CORPS OF ENGINEERS
NEW ENGLAND DISTRICT
FRANKLIN, SANBORNTON, NEW HAMPTON
BRISTOL & HILL NEW HAMPSHIRE



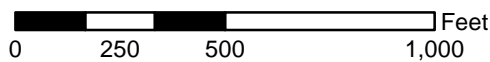


Legend

- USACE Boundary
- Lawns**
- Annual
- Bi-Weekly
- Bi-Weekly
- Weekly
- Wetland



US Army Corps of Engineers
New England District



GIS Sources: USACE & GRANIT

GROUNDS MAINTENANCE - MAP 2 OF 4

FRANKLIN FALLS DAM
US ARMY CORPS OF ENGINEERS
NEW ENGLAND DISTRICT
FRANKLIN, SANBORNTON, NEW HAMPTON
BRISTOL & HILL NEW HAMPSHIRE

FEBRUARY 2015





Legend
 Weekly



US Army Corps of Engineers
 New England District



Dedication Mowing Area
 New Hampton, NH. Approximately
 0.25 acres


GIS Sources: Google Earth

GROUNDS MAINTENANCE - MAP 3 of 4

FRANKLIN FALLS DAM
 US ARMY CORPS OF ENGINEERS
 NEW ENGLAND DISTRICT
 FRANKLIN, SANBORNTON, NEW HAMPTON
 BRISTOL & HILL NEW HAMPSHIRE





Legend
 New Hampton Rec Area

Google earth
 © 2015 Google

Legend
 Weekly

GROUPS MAINTENANCE - MAP 4 of 4

FRANKLIN FALLS DAM
 US ARMY CORPS OF ENGINEERS
 NEW ENGLAND DISTRICT
 FRANKLIN, SANBORNTON, NEW HAMPTON
 BRISTOL & HILL NEW HAMPSHIRE



**US Army Corps
 of Engineers®**
 New England District



New Hampton Mowing Rec-Area
 New Hampton, NH. Approximately
 0.10 acres

GIS Sources: Google Earth

